

SECTION 3. PARTS INFORMATION

3-1. INTRODUCTION

This section lists the replaceable parts of the Henny Penny Island Warmer.

3-2. GENUINE PARTS

Use only genuine Henny Penny parts in your warmer. Using a part of lesser quality or substitute design may result in damage to the unit or personal injury.

3-3. WHEN ORDERING PARTS

Once the parts that you want to order have been found in the parts list, write down the following information:

(Sample)

Item Number 3
Part Number 39795
Description Lamp Holder

From the data plate, list the following information:

(Sample)

Product Number HMI105.0
Serial Number 0001
Voltage 120/208

3-4. PRICES

Your distributor has a price parts list and will be glad to inform you of the cost of your parts order.

3-5. DELIVERY

Commonly replaced items are stocked by your distributor and will be sent out when your order is received. Other parts will be ordered, by your distributor, from Henny Penny Corp. Normally, these will be sent to your distributor within three working days.

3-6. WARRANTY

All replacement parts (except lamps and fuses) are warranted for 90 days against manufacturing defects and workmanship. If damage occurs during shipping, notify the carrier at once so a claim may be properly filed. Refer to warranty in the front of this manual for other rights and limitations.

3-7. RECOMMENDED SPARE PARTS FOR DISTRIBUTORS

Recommended replacement parts, stocked by your distributor, are indicated with √ in the parts lists. Please use care when ordering recommended parts, because all voltages and variations are marked. Distributors should order parts based upon common voltages and equipment sold in their territory.

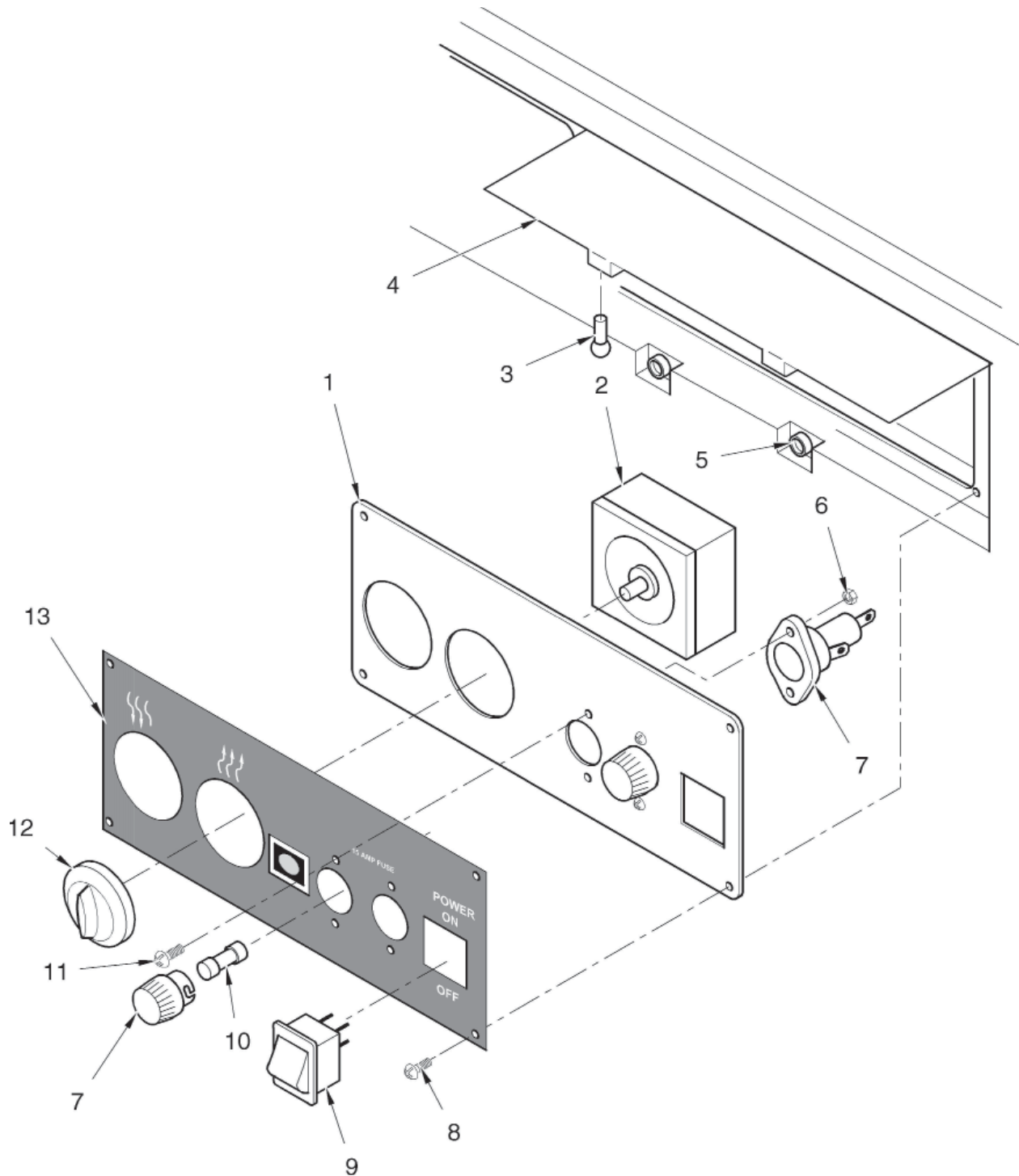


Figure 3-1. Control Panel Assy.

FIG. & ITEM NO.	PART NO.	DESCRIPTION	HMI-103	HMI-105
3-1		CONTROL PANEL ASSY.		
1	45710	CONTROL PANEL	1	1
√ 2	22317	INFINITE REGULATOR	2	2
3	MS01-381	BLACK NYLON CLIP	2	2
4	45717	CONTROL ACCESS PANEL	1	1
5	MS01-382	BLACK NYLON RECEIVER	2	2
6	NS02-005	NUT	4	4
√ 7	EF02-006	FUSE HOLDER	2	2
8	SC04-003	SCREW	4	4
√ 9	72277	POWER SWITCH	1	1
√ 10	EF02-007	FUSE	2	2
11	SC01-113	SCREW	4	4
12	22046	INFINITE SWITCH KNOB	2	2
13	45835	DECAL - HMI-103	1	-
13	45809	DECAL - HMI-105	-	1
13	48547	DECAL - HMI-103 C.E.	1	-
13	48521	DECAL - HMI-105 C.E.	-	1

√ recommended parts

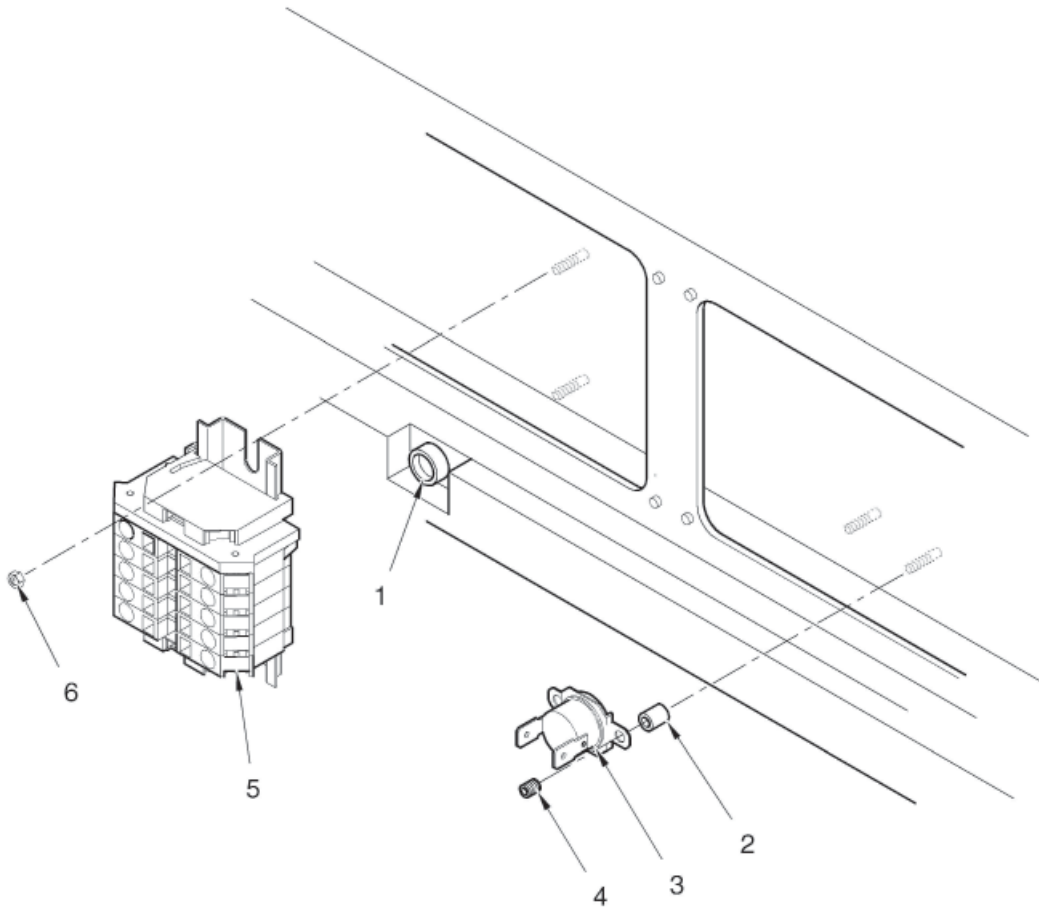


Figure 3-2. Terminal Block

FIG. & ITEM NO.	PART NO.	DESCRIPTION	HMI-103	HMI-105
1	MS01-382	NYLON RECEPTACLE	2	2
2	ME50-013	SPACER	4	4
√ 3	48122	HIGH LIMIT	2	2
4	ME50-023	STANDOFF	4	4
5	34924	TERMINAL BLOCK ASSY. (3 PHASE)	1	1
5	34925	TERMINAL BLOCK ASSY. (1 PHASE)	1	1
6	NS02-006	NUT	2	2

√ recommended parts

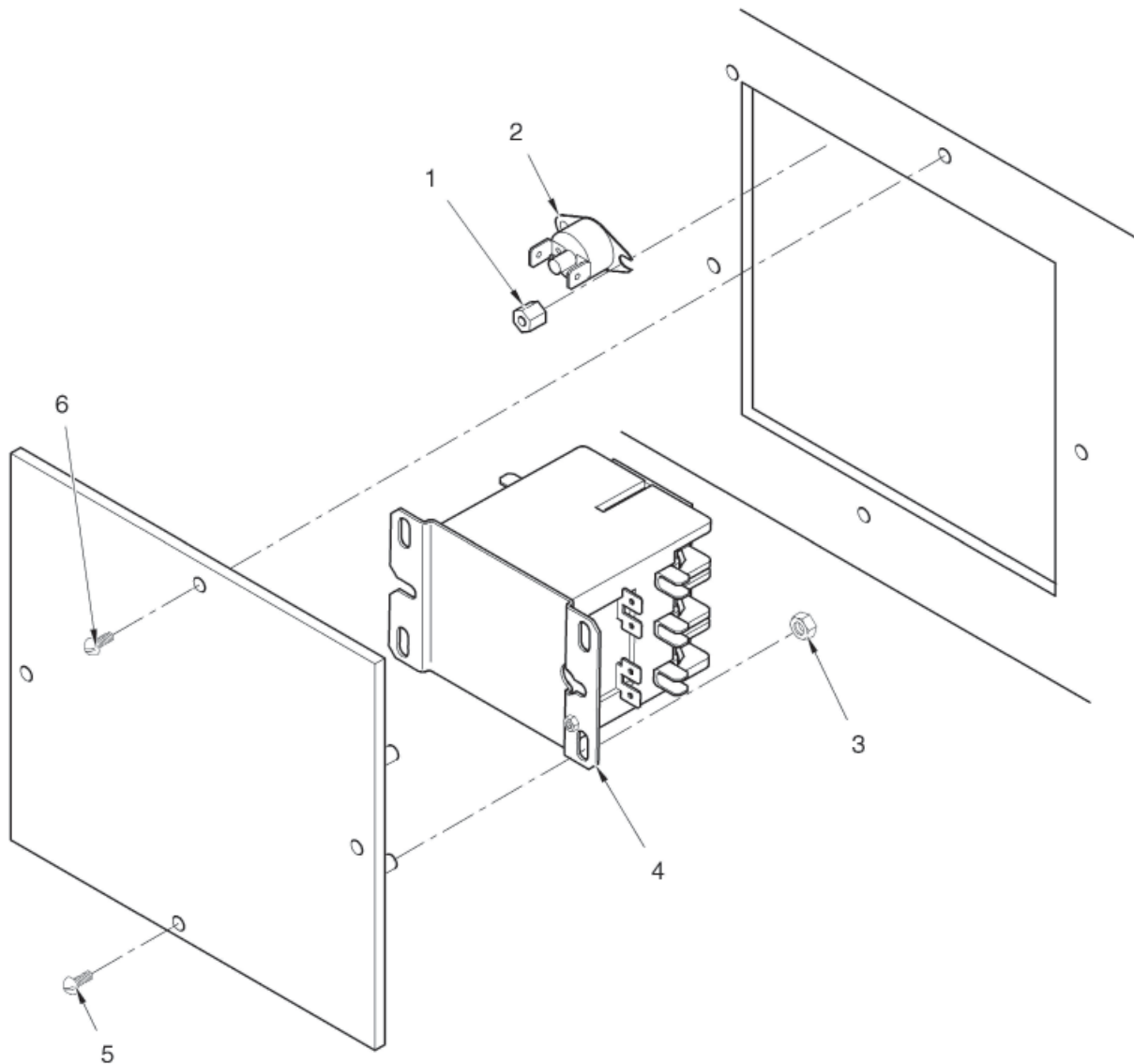


Figure 3-3. Contactor

FIG. & ITEM NO.	PART NO.	DESCRIPTION	HMI-103	HMI-105
1	ME50-023	STANDOFF	4	4
√ 2	49547	HI LIMIT - MANUAL RESET	2	2
3	NS02-006	NUT	4	4
√ 4	19405	CONTACTOR - 208/240 V	1	1
√ 4	56616	CONTACTOR - 120 V	1	1
5	SC04-003	SCREW	3	3
6	SC01-205	SCREW	1	1
7*	55267	EMC FILTER ASSY - CE	1	1

√ recommended parts

* not shown

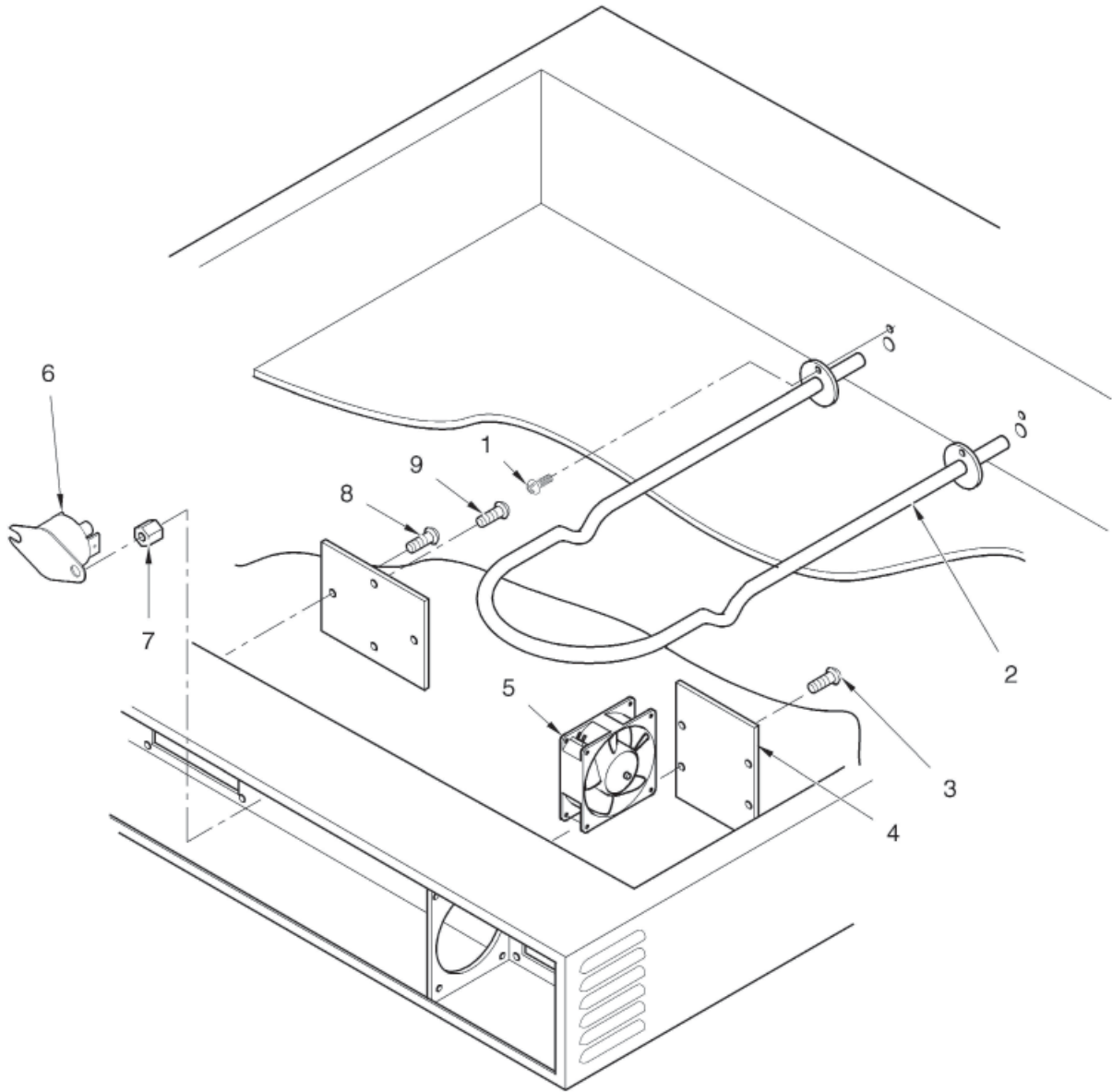


Figure 3-4. Lower Heat

FIG. & ITEM NO.	PART NO.	DESCRIPTION	HMI-103	HMI-105
3-4		LOWER HEAT		
1	SC02-041	SCREW	4	6
√ 2	56617	HEATER - LOWER - 120V - CE	2	2
√ 2	44976	HEATER - LOWER - 208V	2	3
√ 2	37059	HEATER - LOWER - 240V	2	3
√ 2	54025	HEATER - LOWER - 230V - CE - 400V	2	3
3	SC04-003	SCREW (FAN BOX COVER)	8	8
4	49537	FAN ACCESS PANEL	2	2
√ 5	37398	COOLING FAN - 220/230V	2	2
√ 5	56615	COOLING FAN - 110-120V	2	2
√ 6	49547	HIGH LIMIT - MANUAL RESET	2	2
7	ME50-023	STANDOFF	4	4
8	SC04-003	SCREW (COVER PLATE)	3	3
9	SC01-205	SCREW	1	1
10*	68513	COVER-WELL HMI 4" DEEP (5 WELL)	-	5
10*	68514	COVER-WELL HMI 4" DEEP (3 WELL)	3	-

√ recommended parts / * not shown

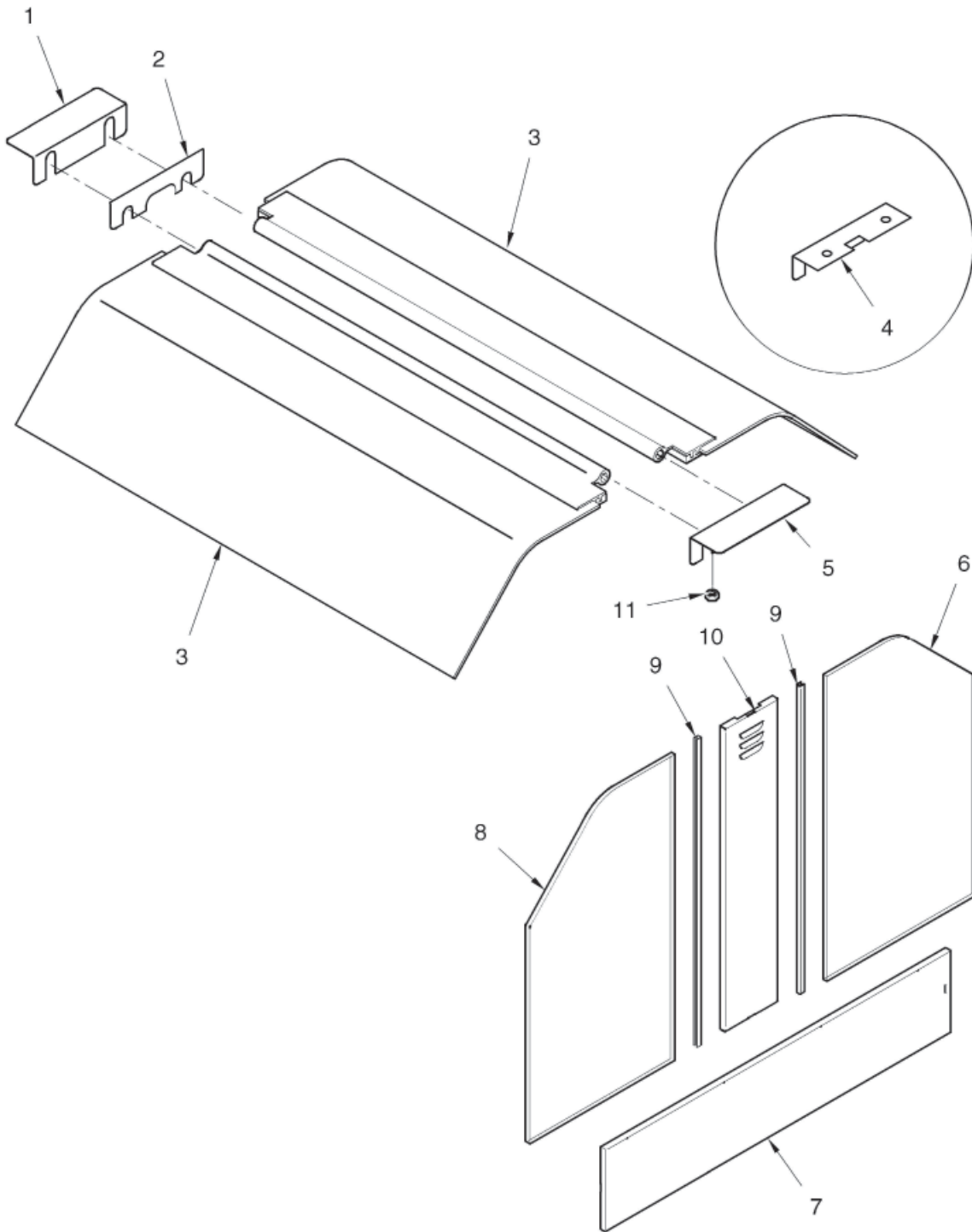


Figure 3-5. Glass Panels

FIG. & ITEM NO.	PART NO.	DESCRIPTION	HMI-103	HMI-105
3-5		GLASS PANELS (VIEWED FROM CUSTOMER SIDE)		
1	48626	HINGE BLOCK COVER STUD ASSEMBLY	1	1
2	45745	HINGE BLOCK	2	2
3	79424	CANOPY GLASS ASSY.	2	--
3	79425	CANOPY GLASS ASSY.	--	2
4	49567	UPRIGHT COVER TOP, CORD	1	1
5	48626	HINGE BLOCK COVER STUD ASSEMBLY	1	1
6	45677	END GLASS-CLEAR (FRONT RT/LEFT REAR)	2	2
6	48508	END GLASS-MIRROR (FRONT RT/LEFT REAR)	2	2
6*	45727	END PLATE	4	4
6*	SC04-003	SCREW	4	4
7	45699	BOTTOM ACCESS PANEL	2	2
8	48568	END GLASS-CLEAR (FRONT LT/RIGHT REAR)	2	2
8	48507	END GLASS-MIRROR(FRONT LT/RIGHT REAR)	2	2
9	48522	END GLASS SEAL	4	4
10	45697	UPRIGHT ACCESS PANEL	2	2
11	NS02-006	NUT	4	4
12*	49593	POWER CORD ASSY. 30A-1PH TOP EXIT	1	1
12*	37849	POWER CORD ASSY. 30A	1	1
12*	37123	POWER CORD ASSY. 20A-1PH-120V	1	--
12*	69598	POWER CORD ASSY. 20A-1PH-120/208V BOT EXIT	1	--
12*	69599	POWER CORD ASSY. 20A-1PH-120/208V TOP EXIT	1	--
12*	49594	POWER CORD ASSY. 20A-3PH BOT. EXIT	1	1
12*	49596	POWER CORD ASSY. 20A-3PH TOP EXIT	1	1
13*	05907	PEDESTAL BASE MOUNTING KIT	--	1
13*	05906	PEDESTAL BASE MOUNTING KIT	1	--
14*	53185	BREAD SHELF ASSEMBLY - SAFEWAY	1	1
15*	48561	INSULATION, BOTTOM	1	--
15*	48523	INSULATION, BOTTOM	--	1
16*	48564	INSULATION, CUSTOMER SIDE	1	--
16*	48524	INSULATION, CUSTOMER SIDE	--	1
17*	48565	INSULATION, CONTROL SIDE	1	--
17*	48525	INSULATION, CONTROL SIDE	--	1

*not shown

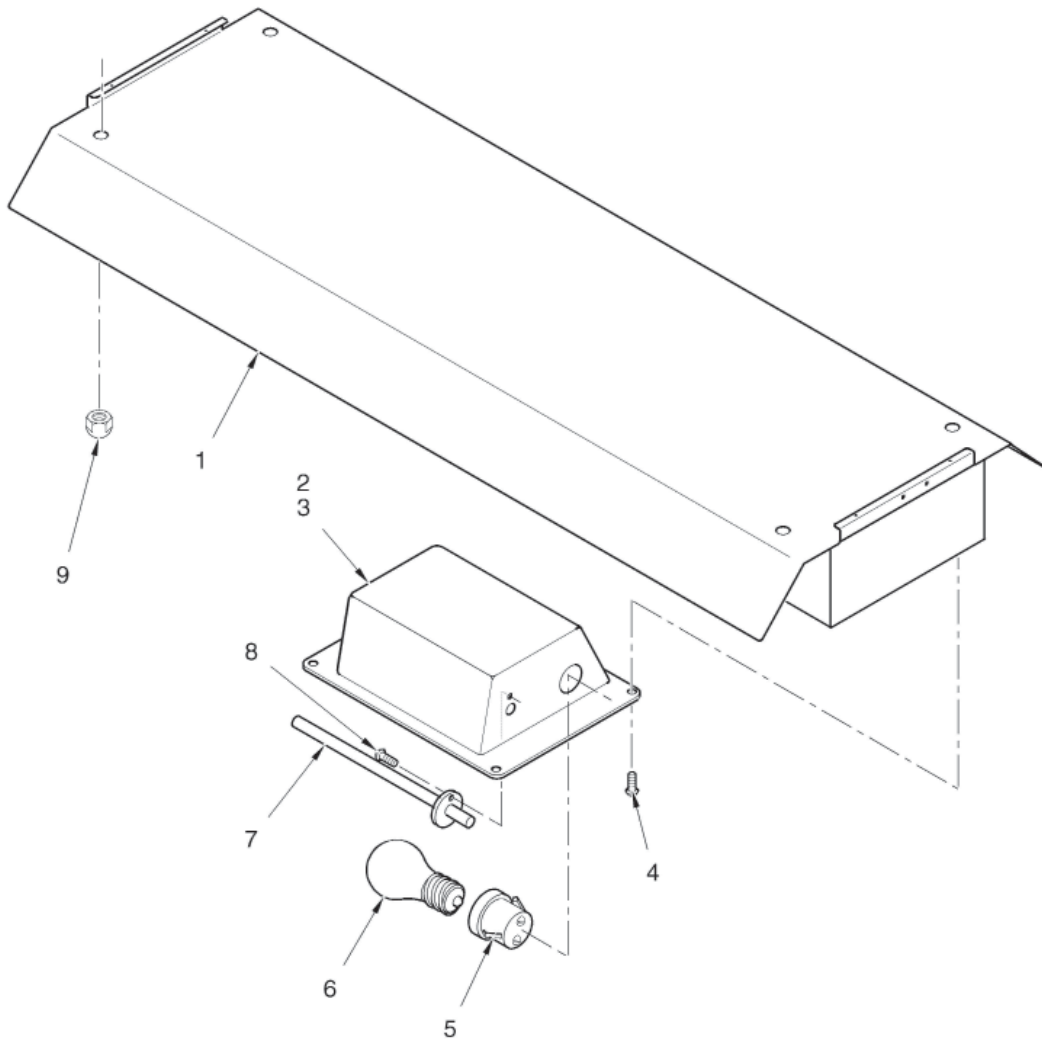


Figure 3-6. Upper Heat

FIG. & ITEM NO.	PART NO.	DESCRIPTION	HMI-103	HMI-105
1	45683	CANOPY SHIELD	-	1
1	45761	CANOPY SHIELD	1	-
2	46007	LIGHT REFLECTOR	6	10
3	46009	HEAT REFLECTOR	6	10
4	SC04-003	SCREW	4	4
√ 5	39795	LAMP HOLDER	12	20
√ 5	54041	LAMP HOLDER - CE & 400V INT'L	12	20
√ 6	BL01-018	BULB-90W-Halogen -120V/208V/240V	12	20
√ 6	BL01-015	BULB-60W-Teflon Coated-230V/50Hz/1Ph or 400V/50Hz/3Ph	12	20
√ 7	48650	HEATER-UPPER-RADIANT-104V-180W (208)	6	10
√ 7	48651	HEATER-UPPER-RADIANT-115V-180W (240)	6	10
√ 7	56618	HEATER-UPPER-RADIANT-120V-115W (120)	6	10
8	SC04-003	SCREW	6	10
9	NS03-016	ACORN NUT	4	4
10*	14666	KIT-HMI 10X LMAP GUARD	12	20

√ recommended parts / * not shown