



# HOSHIZAKI

## Parts List

Commercial Series  
Refrigerated Kitchen Equipment

### Models

Undercounter, Worktop, Prep Table  
CRM\_27, CRM\_48, CRM\_60, CRM\_72



[hoshizakiamerica.com](http://hoshizakiamerica.com)

Number: 71335  
Issued: 8-19-2011  
Revised: 7-26-2016

## CONTENTS

Auxiliary Codes.....	3
Model Codes .....	9
A. Main Assembly .....	10
CRMR27 and CRMF27 Undercounter, Worktop, and Prep Table .....	10
CRMR48 and CRMF48 Undercounter, Worktop, and Prep Table .....	13
CRMR60 and CRMF60 Undercounter, Worktop, and Prep Table .....	16
CRMR72 Undercounter, Worktop, and Prep Table .....	19
B. Refrigeration Circuit.....	22
CRMR27 Undercounter, Worktop, and Prep Table .....	22
CRMF27 Undercounter and Worktop .....	24
CRMR48 Undercounter, Worktop, and Prep Table .....	26
CRMF48 Undercounter and Worktop .....	28
CRMR60 Undercounter, Worktop, and Prep Table .....	30
CRMF60 Undercounter and Worktop .....	32
CRMR72 Undercounter, Worktop, Prep Table .....	34
C. Door-Right Hinged.....	36
D. Door-Left Hinged .....	38
E. Drawer .....	40
F. Accessories & Labels .....	42

## Auxiliary Codes

### CRMR27

A-5 July 2011  
B-5 January 2012  
C-5 January 2013  
C-6 June 2013  
C-7 September 2013  
C-8 December 2013  
D-5 January 2014  
D-6 June 2014  
D-7 July 2014  
E-5 January 2015  
E-6 November 2015  
F-5 January 2016

### CRMR27-D

C-5 December 2013  
C-5 February 2014  
D-5 February 2014  
D-6 August 2014  
E-5 January 2015  
E-6 June 2015  
F-5 January 2016

### CRMR27-LP

D-5 January 2014  
D-6 June 2014  
D-7 October 2014  
E-5 June 2015  
E-6 November 2015  
F-5 January 2016

### CRMR-LPC

E-5 September 2015  
F-5 January 2016

### CRMR27-01

C-7 September 2013  
D-5 April 2014  
D-6 June 2014  
D-7 September 2014  
E-5 February 2015  
E-6 November 2015

### CRMR27-W

A-5 December 2011  
B-5 January 2012  
C-5 January 2013  
D-5 May 2014  
D-6 June 2014  
E-5 March 2015  
F-5 January 2016

### CRMR27-WD

D-5 February 2014  
D-6 July 2014  
E-5 February 2015  
E-6 September 2015  
F-5 March 2016

### CRMR27-W01

B-5 August 2012  
E-5 February 2015

### CRMR27-8

B-5 March 2012  
C-5 January 2013  
C-6 June 2013  
C-7 December 2013  
D-5 January 2014  
D-6 June 2014  
D-7 July 2014  
D-8 September 2014  
E-5 January 2015  
E-6 April 2015  
E-7 June 2015  
F-5 January 2016  
F-6 April 2016

### CRMR27-8D

D-5 April 2014  
D-6 July 2014  
D-8 September 2014  
E-6 April 2015  
E-7 October 2015

### CRMR27-12M

B-5 February 2012  
C-5 January 2013  
C-6 May 2013  
C-7 November 2013  
D-5 February 2014  
D-6 June 2014  
D-7 August 2014  
D-8 September 2014  
E-5 January 2015  
E-6 April 2015  
E-7 June 2015  
E-8 November 2015  
F-5 January 2016  
F-6 March 2016

### CRMR27-12MD

D-5 February 2014  
D-8 September 2014  
E-6 April 2015

### CRMF27

A-5 July 2011  
B-5 January 2012  
C-5 January 2013  
C-6 June 2013  
C-7 November 2013  
D-5 January 2014  
D-6 May 2014  
D-7 June 2014  
E-5 January 2015  
E-6 November 2015  
F-5 February 2016

### CRMF27-D

D-5 May 2014  
D-7 June 2014  
E-6 October 2015  
F-5 January 2016

### CRMF27-LP

D-5 January 2014

**CRMR27-12M**

B-5 February 2012  
C-5 January 2013  
C-6 May 2013  
C-7 November 2013  
D-5 February 2014  
D-6 June 2014  
D-7 August 2014  
D-8 September 2014  
E-5 January 2015  
E-6 April 2015  
E-7 June 2015  
E-8 November 2015  
F-5 January 2016  
F-6 March 2016

**CRMR27-12MD**

D-5 February 2014  
D-8 September 2014  
E-6 April 2015

**CRMF27**

A-5 July 2011  
B-5 January 2012  
C-5 January 2013  
C-6 June 2013  
C-7 November 2013  
D-5 January 2014  
D-6 May 2014  
D-7 June 2014  
E-5 January 2015  
E-6 November 2015  
F-5 February 2016

**CRMF27-D**

D-5 May 2014  
D-7 June 2014  
E-6 October 2015  
F-5 January 2016

**CRMF27-LP**

D-5 January 2014  
D-7 June 2014  
E-5 October 2015  
E-6 November 2015  
F-5 February 2016

**CRMF27-01**

C-5 October 2013  
D-7 September 2014  
E-5 February 2015  
E-6 November 2015  
F-5 March 2016

**CRMF27-W**

A-5 December 2011  
B-5 January 2012  
C-5 January 2013  
C-6 June 2013  
C-7 December 2013  
D-5 January 2014  
D-6 May 2014  
D-7 June 2014  
E-5 January 2015  
E-6 November 2015  
F-5 January 2016

**CRMF27-WD**

D-5 May 2014  
D-7 October 2014  
E-5 January 2015  
E-6 August 2015  
F-5 January 2016

**CRMF27-W01**

E-5 April 2015  
F-5 January 2016

**CRMR48**

A-5 August 2011  
 B-5 January 2012  
 C-5 January 2013  
 C-6 June 2013  
 D-5 January 2014  
 D-6 October 2014  
 E-5 January 2015  
 F-5 January 2016  
 F-6 March 2016

**CRMR48-D4**

D-5 March 2014  
 D-6 September 2014  
 E-6 September 2015

**CRMR48-01**

B-5 August 2012  
 D-5 April 2014  
 D-6 June 2014  
 E-5 February 2015  
 F-6 March 2016

**CRMR48-W**

A-5 December 2011  
 B-5 February 2012  
 C-5 January 2013  
 C-6 June 2013  
 C-7 September 2013  
 C-8 December 2013  
 D-5 February 2014  
 D-6 June 2014  
 E-5 January 2015  
 E-6 July 2015  
 F-6 March 2016

**CRMR48-WD4**

D-5 March 2014  
 D-6 June 2014  
 E-5 May 2015  
 E-6 September 2015

**CRMR48-W01**

C-5 February 2013  
 E-5 February 2015

**CRMR48-8**

B-5 March 2012  
 C-5 February 2013  
 C-6 June 2013  
 C-7 November 2013  
 D-5 May 2014  
 D-7 August 2014  
 D-8 October 2014  
 E-6 April 2015  
 E-7 August 2015  
 E-8 November 2015  
 F-5 January 2016  
 F-6 April 2016

**CRMR48-12**

B-5 March 2012  
 C-5 January 2013  
 C-6 May 2013  
 C-7 October 2013  
 D-5 January 2014  
 D-6 June 2014  
 D-7 July 2014  
 D-8 September 2014  
 E-5 January 2015  
 E-6 April 2015  
 E-7 June 2015  
 E-8 November 2015  
 F-5 January 2016  
 F-6 March 2016

**CRMR48-12M**

B-5 March 2012  
 C-5 February 2013  
 C-6 June 2013  
 E-5 February 2015  
 E-6 April 2015  
 E-7 June 2015  
 E-8 November 2015  
 F-5 January 2016  
 F-6 April 2016

**CRMR48-12D4**

D-5 April 2014  
 D-7 August 2014  
 D-8 October 2014  
 E-6 April 2015  
 E-7 August 2015

**CRMR48-18M**

B-5 February 2012  
 C-5 January 2013  
 C-6 May 2013  
 C-7 November 2013  
 D-5 January 2014  
 D-6 July 2014  
 D-7 August 2014  
 D-8 September 2014  
 E-5 January 2015  
 E-6 April 2015  
 E-7 June 2015  
 E-8 November 2015  
 F-5 January 2016  
 F-6 March 2016

**CRMR48-18MD4**

D-5 April 2014  
 E-5 February 2015  
 E-6 May 2015  
 E-7 July 2015  
 E-8 November 2015  
 F-5 January 2016  
 F-6 March 2016

**CRMF48**

A-5 August 2011  
 B-5 January 2012  
 B-6 July 2012  
 C-5 January 2013  
 C-6 June 2013  
 C-7 September 2013  
 C-8 November 2013  
 D-5 January 2014  
 D-6 February 2014  
 D-7 July 2014  
 E-5 February 2015  
 F-5 January 2016  
 F-6 February 2016

**CRMF48-D4**

E-5 February 2015  
E-6 October 2015  
F-5 February 2016

**CRMF48-01**

D-5 November 2014  
E-5 March 2015  
F-5 January 2016

**CRMF48-W**

A-5 December 2011  
B-5 February 2012  
B-6 July 2012  
C-5 March 2013  
C-6 June 2013  
C-7 November 2013  
D-5 January 2014  
D-6 March 2014  
D-7 July 2014  
D-8 October 2014  
E-5 January 2015  
F-5 January 2016  
F-6 March 2016

**CRMF48-WD4**

E-6 June 2015

**CRMF48-W01**

E-5 June 2015  
F-6 April 2016

**CRMR60**

B-5 August 2012  
 C-5 January 2013  
 C-6 July 2013  
 D-5 January 2014  
 D-6 June 2014  
 D-7 August 2014  
 D-9 September 2014  
 E-5 January 2015  
 F-5 February 2016

**CRMR60-D4**

E-5 January 2025

**CRMR60-W**

B-5 August 2012  
 C-5 January 2013  
 C-6 October 2013  
 C-7 November 2013  
 D-5 January 2014  
 D-6 June 2014  
 D-7 July 2014  
 D-9 November 2014  
 E-5 February 2015  
 F-5 February 2016

**CRMR60-WD4**

E-5 April 2015  
 E-6 June 2015

**CRMR60-8**

C-5 May 2013  
 C-6 July 2013  
 C-7 September 2013  
 E-6 April 2015  
 E-7 June 2015  
 E-8 September 2015  
 E-9 November 2015  
 F-6 March 2016

**CRMR60-12**

C-5 April 2013  
 C-6 June 2013  
 D-6 May 2014  
 D-7 July 2014  
 D-8 August 2014  
 D-9 September 2014  
 E-5 February 2015  
 E-6 April 2015  
 E-7 July 2015  
 E-8 September 2015  
 E-9 November 2015  
 F-5 February 2016

**CRMR60-12M**

C-5 March 2013  
 C-6 May 2013  
 C-7 September 2013

**CRMR60-16**

C-5 February 2013  
 C-6 May 2013  
 C-7 September 2013  
 D-6 February 2014  
 E-5 January 2015  
 E-6 April 2015  
 E-7 June 2015  
 E-8 October 2015  
 E-9 November 2015  
 F-5 January 2016  
 F-6 March 2016

**CRMR60-18M**

C-5 March 2013  
 C-6 May 2013  
 C-7 September 2013  
 C-8 November 2013  
 D-6 May 2014  
 D-9 September 2014  
 E-5 January 2015  
 E-6 May 2015  
 E-7 June 2015  
 E-8 September 2015  
 E-9 November 2015  
 F-6 March 2016

**CRMR60-24M**

C-5 February 2013  
 C-6 May 2013  
 C-7 July 2013  
 C-8 November 2013  
 D-5 January 2014  
 D-6 February 2014  
 D-7 July 2014  
 D-8 August 2014  
 D-9 September 2014  
 E-5 January 2015  
 E-6 May 2015  
 E-7 July 2015  
 E-8 September 2015  
 E-9 November 2015  
 F-5 January 2016  
 F-6 March 2016

**CRMR60-24MD4**

E-5 February 2015  
 E-6 May 2015  
 E-7 July 2015  
 E-8 September 2015  
 E-9 November 2015

**CRMF60**

C-5 January 2013  
 C-6 September 2013  
 C-7 November 2013  
 D-6 March 2014  
 D-8 September 2014  
 E-5 March 2015  
 F-5 January 2016

**CRMF60-W**

C-5 February 2013  
 C-6 September 2013  
 C-7 November 2013  
 D-5 January 2014  
 D-6 April 2014  
 D-7 July 2014  
 E-5 February 2015  
 F-5 January 2016

**CRMR72**

B-5 July 2012  
 C-5 January 2013  
 C-6 June 2013  
 C-7 December 2013  
 D-5 April 2014  
 D-6 June 2014  
 D-7 July 2014  
 E-5 January 2015  
 F-5 January 2016

**CRMR72-D6**

D-5 December 2014  
 E-5 May 2015  
 F-5 March 2016

**CRMR72-W**

B-5 August 2012  
 C-5 January 2013  
 C-6 June 2013  
 D-5 February 2014  
 D-6 June 2014  
 D-7 August 2014  
 E-5 February 2015  
 F-5 January 2016

**CRMR72-WD6**

E-5 March 2015  
 E-7 June 2015  
 F-5 March 2016

**CRMR72-12**

C-5 April 2013  
 C-6 June 2013  
 C-7 September 2013  
 D-8 August 2014  
 D-9 October 2014  
 E-5 March 2015  
 E-6 April 2015  
 E-7 June 2015  
 E-8 October 2015  
 E-9 November 2015  
 F-5 January 2016

**CRMR72-16**

C-5 April 2013  
 C-6 June 2013  
 C-7 September 2013  
 E-7 June 2015  
 E-9 November 2015  
 F-5 March 2016

**CRMR72-18**

C-5 February 2013  
 C-6 July 2013  
 C-7 September 2013  
 C-8 November 2013  
 D-6 February 2014  
 D-7 July 2014  
 D-8 August 2014  
 D-9 September 2014  
 E-5 January 2015  
 E-6 April 2015  
 E-7 June 2015  
 E-8 October 2015  
 E-9 November 2015  
 F-5 January 2016  
 F-6 April 2016

**CRMR72-18M**

C-5 May 2013  
 C-6 July 2013  
 C-7 October 2013  
 C-8 November 2013  
 D-8 September 2014  
 F-6 March 2016

**CRMR72-24M**

C-5 May 2013  
 C-6 August 2013  
 C-7 September 2013  
 D-8 August 2014  
 E-6 May 2015  
 E-8 October 2015  
 E-9 November 2015  
 F-6 May 2016

**CRMR72-30M**

C-5 January 2013  
 C-6 May 2013  
 C-7 July 2013  
 C-8 November 2013  
 D-5 January 2014  
 D-6 February 2014  
 D-7 July 2014  
 D-8 August 2014  
 D-9 November 2014  
 E-5 January 2015  
 E-6 April 2015  
 E-7 June 2015  
 E-8 September 2015  
 E-9 November 2015  
 F-5 January 2016  
 F-6 March 2016

**CRMR72-30MD6**

E-5 January 2015  
 F-5 February 2016  
 F-6 April 2016



## **Model Codes**

The model number code breakdown is as follows: CRMR\_\_ and CRMF\_\_

C – Commercial Series

RM – Rear Mount

R – Refrigerator

F – Freezer

27, 48, 60, and 72 – width

After Dash (-) Nomenclature:

-01 – Locks

-W – Worktop

-D, -D4, -D6 – Drawers

-8, -12, -16, -18, -24, -30 – Prep Table Number of Pans

-8M, -12M, -16M, -18M, -24M, -30M – Mega Top Number of Pans

-LP – Low Profile Casters

-LPC – Low Profile Stainless Steel Shelf

## **Auxiliary Code Breakdown**

The auxiliary code is the first two characters in the serial number. The first character indicates the year. Years progress or regress in alphabetical order. The series runs from "A" through "V" and the letters "I" and "O" are skipped. The second character indicates significant part changes within a year. Base is "5" and this number advances for each change. In cases where there is a letter in parentheses, this designates the month. This is the last character in the serial number. The series runs from "(A)" through "(M)" and the letter "(I)" is skipped. This designation is only included when identifying a parts change within an auxiliary code.

## **Note About Ordering Parts**

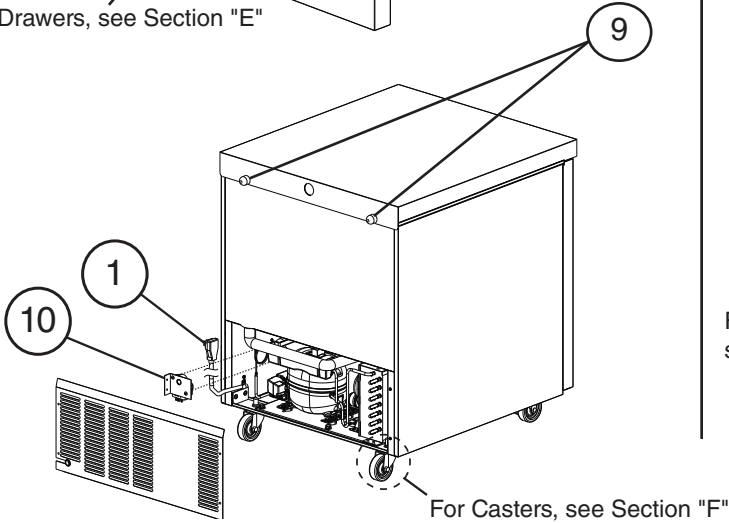
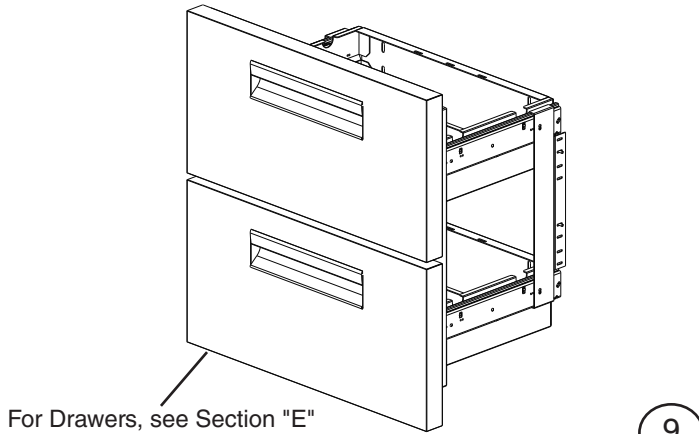
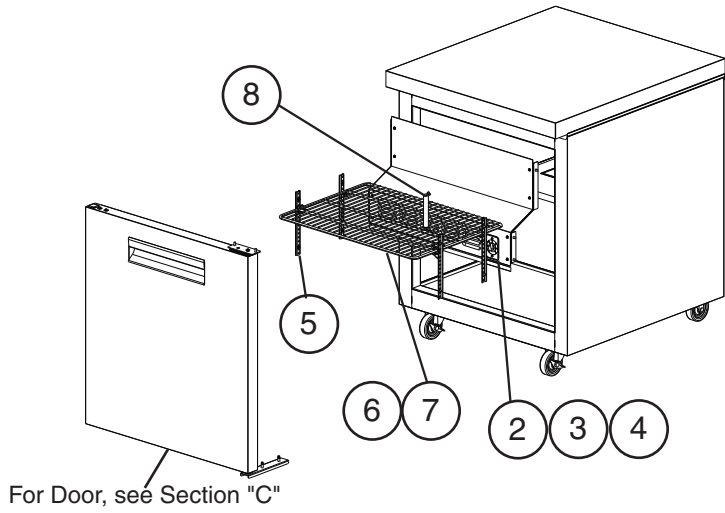
Most assemblies cannot be ordered as complete units; parts in the assemblies generally must be ordered separately.

# A. Main Assembly

## CRMR27 and CRMF27 Undercounter, Worktop, and Prep Table

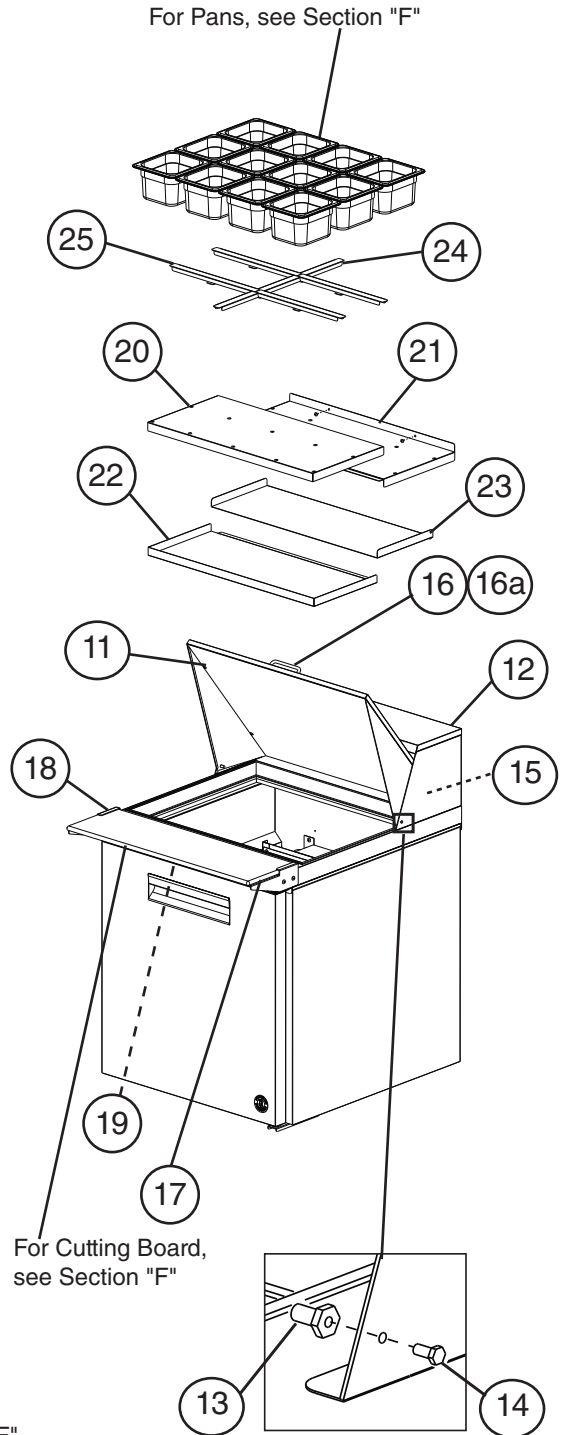
A-5 to F-6

### Undercounter, Worktop, Prep Table Common Parts



Model Shown: CRMF27

### Prep Table Specific Parts



Model Shown: CRMR27-12M

Title: A. Main Assembly Models: CRMR27 and CRMF27 Undercounter, Worktop, and Prep Table													
Index No.	Description	Material or Model Number	Part Number	Required Number									
				A-5 to C-5	C-6 to D-5	D-6 to E-5	E-6 to E-7	E-8 to F-5	F-6				
<b>Common Parts</b>													
1	Power Cord		4A2860-01	1	1	1	1	1	1	1			
2	Cabinet Thermostat	<b>Refrigerator</b>	3A6755-01	1	1	1	1	1	1	1			
		<b>Freezer</b>	3A6755-02	1	1	1	1	1	1	1			
3	Dial Plate		3A6787-01	1	1	1	1	1	1	1			
4	Dial Knob		3A6788-01	1	1	1	1	1	1	1			
5	Pilaster		4A5417-01	4	-								
		Note: When using 4A5719-01 on Aux. Code C-6 through D-5, rotate pilaster 180 degrees.	4A5719-01		4	4	-						
			4A5854-01				4	4	4				
6	Shelf		3A2830-07	1	1	1	1	1	1	1			
7	Shelf Clip		4A5418-01	4	4	4	4	4	4	4			
8	Cabinet Thermometer		461083-01	1	1	1	1	1	1	1			
9	Bumper		3A6696-01	2	2	2	2	2	2	2			
10	Defrost Timer	<b>Freezer, Prep Table</b>	3A7925-01	1	1	1	1	1	1	1			
<b>Prep Table Specific Parts</b>													
11	Rail Cover Assembly	<b>-8</b>	3A7326A01	1	1	1	1	1	1	1			
		<b>-12M</b>	3A7328A01	1	1	1	1	1	1	1			
12	Rail Hood (includes items 13 and 14)		3A7325A01	1	1	1	1	1	1	1			
13	Pivot Pin		4A4768-01	2	2	2	2	2	2	2			
14	Pivot Bolt		4A4769-01	2	2	2	2	2	2	2			
15	Tree Clip		4A0579-01	2	2	2	2	2	2	2			
16	Rail Handle		1A3416-01	1	1	1	1	1	1	1			
16a	Pan Head Screw		7C1211412	2	2	2	2	2	2	2			
17	Right Cutting Board Bracket	<b>-8</b>	4A5496-02	1	1	-							
			3A8653-02			1	1	1	-				
			3A8971-02						1				
		<b>-12M</b>	1000000393	1	1	-							
			SP-5198			1	1	1	-				
			3A8971-02							1			
18	Left Cutting Board Bracket	<b>-8</b>	4A5496-01	1	1	1	-						
			3A8653-01				1	1	-				
			3A8971-01						1				
		<b>-12M</b>	1000000392	1	1	1	-						
			SP-5198				1	1	-				
3A8971-01							1						
19	Center Cutting Board Bracket	<b>-8</b>	4A5905-01							1			

Title: A. Main Assembly Models: CRMR27 and CRMF27 Undercounter, Worktop, and Prep Table												
Index No.	Description	Material or Model Number	Part Number	Required Number								
				A-5 to C-5	C-6 to D-5	D-6 to E-5	E-6 to E-7	E-8 to F-5	F-6			
20	Upper Front Air Distribution Table Panel	<b>-8, -12M</b>	2A6920-01	1	1	1	-					
21	Upper Rear Air Distribution Table Panel		2A6919-01	1	1	1	-					
22	Lower Front Air Distribution Table Panel		2A6922-01	1	1	1	-					
23	Lower Rear Air Distribution Table Panel		2A6921-01	1	1	1	-					
24	Rail Divider (front-to-back)	<b>-8</b> (HS-5187)	3A8903-01	E-7 and earlier must order items 23 and 24				1	1			
		<b>-12M</b> (HS-5184)	3A8855-01					1	1			
25	Rail Divider (side-to-side)	<b>-8</b> (HS-5185)	3A8856-01					2	2			
		<b>-12M</b> (HS-5185)						4	4			

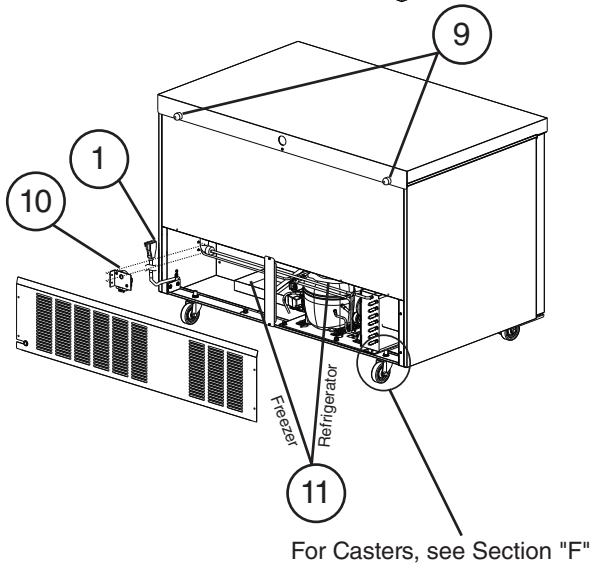
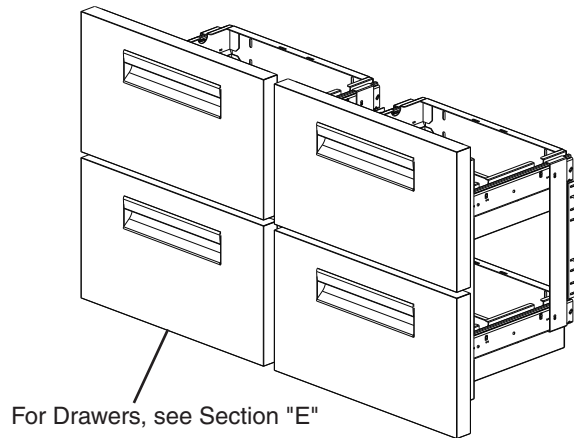
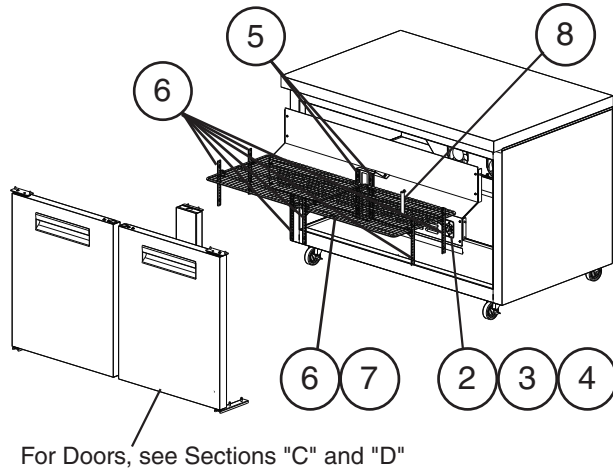
# A. Main Assembly

## CRMR48 and CRMF48 Undercounter, Worktop, and Prep Table

A-5 to F-6

### Undercounter, Worktop, Prep Table

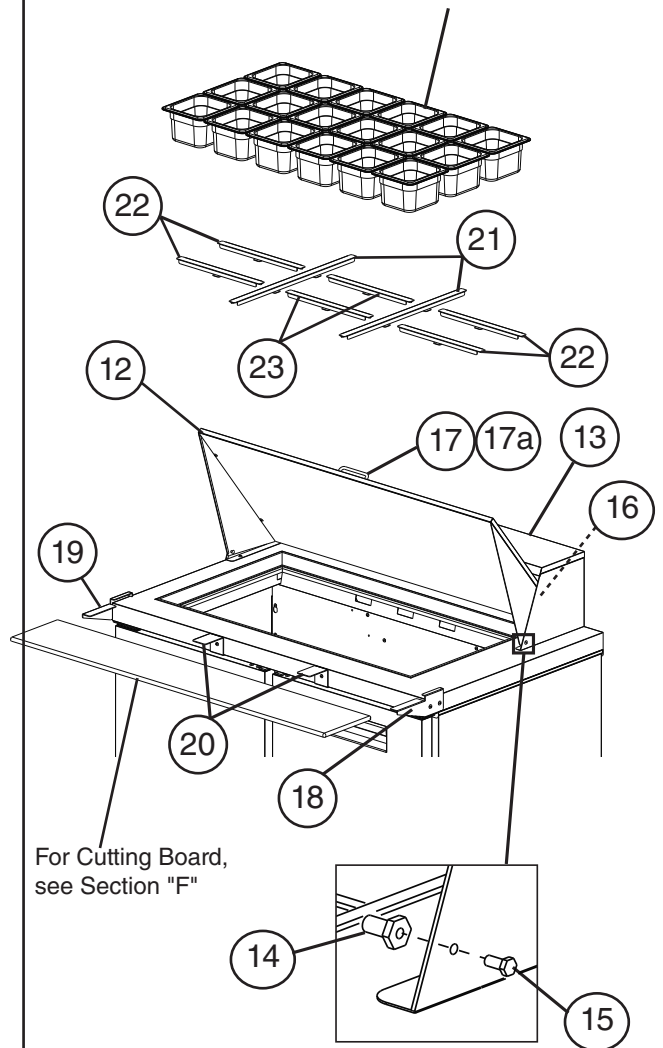
#### Common Parts



Model Shown: CRMF48

### Prep Table Specific Parts

For Pans, see Section "F"



Model Shown: CRMR48-18M

<b>Title: A. Main Assembly Models: CRMR48 and CRMF48 Undercounter, Worktop, and Prep Table</b>											
Index No.	Description	Material or Model Number	Part Number	Required Number							
				A-5 to C-5 (C)	C-5 (D) to E-5 (A)	E-5 (B) to E-5 (M)	E-6 to E-7	E-8 to F-5	F-6		
<b>Common Parts</b>											
1	Power Cord		4A2860-01	1	1	1	1	1	1		
2	Cabinet Thermostat	<b>Refrigerator</b>	3A6755-01	1	1	1	1	1	1		
		<b>Freezer</b>	3A6755-02	1	1	1	1	1	1		
3	Dial Plate		3A6787-01	1	1	1	1	1	1		
4	Dial Knob		3A6788-01	1	1	1	1	1	1		
5	All and Center Back Pilasters		4A5417-01	8	2	2	2	2	2		
6	Sides and Front Pilaster		4A5524-01		6	-					
			4A5719-01			6	6	6	6		
6	Shelf		3A2830-08	2	2	2	2	2	2		
7	Shelf Clip		4A5418-01	8	8	8	8	8	8		
8	Cabinet Thermometer		461083-01	1	1	1	1	1	1		
9	Bumpers		3A6696-01	2	2	2	2	2	2		
10	Defrost Timer	<b>Freezer, Prep Table</b>	3A7925-01	1	1	1	1	1	1		
11	Condensate Pan	<b>Refrigerator</b>	3A6758-01	1	1	1	1	1	1		
		<b>Freezer</b>	2A7170-03	1	-						
			1A3373-01		1	1	1	1	1		
11a	Right Condensate Pan Bracket	<b>Freezer</b>	2A7243-01	1	-						
			1A3374-01		1	1	1	1	1		
11b	Left Condensate Pan Bracket	<b>Freezer</b>	2A7243-02	1	-						
			1A3374-02		1	1	1	1	1		
<b>Prep Table Specific Parts</b>											
12	Rail Cover Assembly	<b>-8</b>	3A7330A01	1	1	1	1	1	1		
		<b>-12, -12D4</b>	3A7331A01	1	1	1	1	1	1		
		<b>-12M</b>	3A7332A01	1	1	1	1	1	1		
		<b>-18M</b>	3A7333A01	1	1	1	1	1	1		
13	Rail Hood (includes items 14 and 15)	<b>-8, -12M</b>	3A7327A01	1	1	1	1	1	1		
		<b>-12, -12D4, -18M</b>	3A7329A01	1	1	1	1	1	1		
14	Pivot Pin		4A4768-01	2	2	2	2	2	2		
15	Pivot Bolt		4A4769-01	2	2	2	2	2	2		
16	Tree Clip		4A0579-01	2	2	2	2	2	2		
17	Rail Handle		1A3416-01	1	1	1	1	1	1		
17a	Pan Head Screw		7C12I1412	2	2	2	2	2	2		

Title: A. Main Assembly Models: CRMR48 and CRMF48 Undercounter, Worktop, and Prep Table																		
Index No.	Description	Material or Model Number	Part Number	Required Number														
				A-5 to C-5 (C)	C-5 (D) to E-5 (A)	E-5 (B) to E-5 (M)	E-6 to E-7	E-8 to F-5	F-6									
18	Right Cutting Board Bracket	<b>-8, -12, -12D4</b>	4A5496-01	1	1	1	-											
			3A8653-02				1	1	-									
			3A8971-02							1								
		<b>-12M, -18M</b>	1000000393	1	1	1	-											
			SP-5199				1	1	-									
			3A8940-02							1								
19	Left Cutting Board Bracket	<b>-8, -12, -12D4</b>	4A5496-02	1	1	1	-											
			3A8653-01				1	1	-									
			3A8971-01							1								
		<b>-12M, -18M</b>	1000000392	1	1	1	-											
			SP-5199				1	1	-									
			3A8940-01							1								
20	Center Cutting Board Bracket	<b>-8, -12, -12D4</b>	4A5905-01							2								
			<b>-12M, -18M</b>	1000000394	2	2	2	2	2	-								
				4A5898-01								2						
21	Rail Divider A (front-to-back)	<b>-8 (HS-5188)</b>	3A8904-01	E-7 and earlier must order items 21, 22, and if applicable, 23					1	1								
		<b>-12, -12D4 (HS-5188)</b>							2	2								
		<b>-12M (HS-5184)</b>	3A8855-01						1	1								
		<b>-18M (HS-5184)</b>							2	2								
22	Rail Divider B (side-to-side)	<b>-8 (HS-5189)</b>	3A8905-01						E-7 and earlier must order items 21, 22, and if applicable, 23					1	1			
		<b>-12, -12D4 (HS-5189)</b>												2	2			
		<b>-12M (HS-5185)</b>	3A8856-01											4	4			
		(outer side-to-side) <b>-18M (HS-5185)</b>												4	4			
23	Rail Divider C (center side-to-side)	<b>-18M (HS-5186)</b>	3A8857-01	E-7 and earlier must order items 21, 22, and if applicable, 23										2	2			

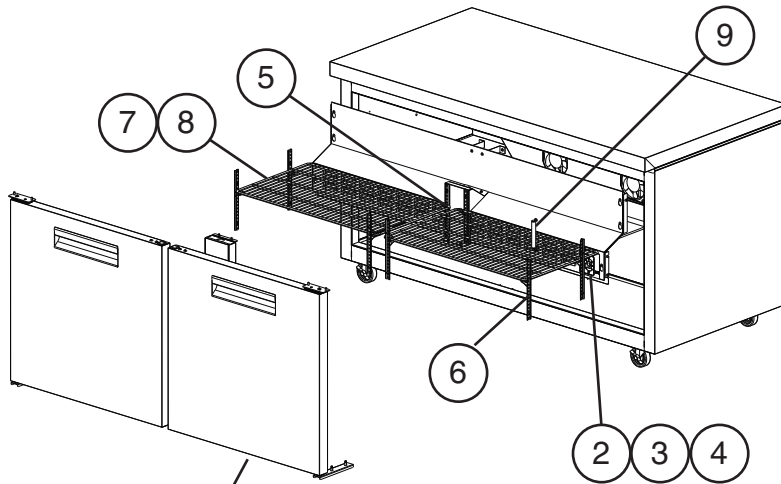
# A. Main Assembly

## CRMR60 and CRMF60 Undercounter, Worktop, and Prep Table

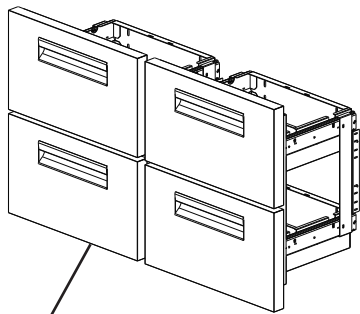
B-5 to F-6

### Undercounter, Worktop, Prep Table

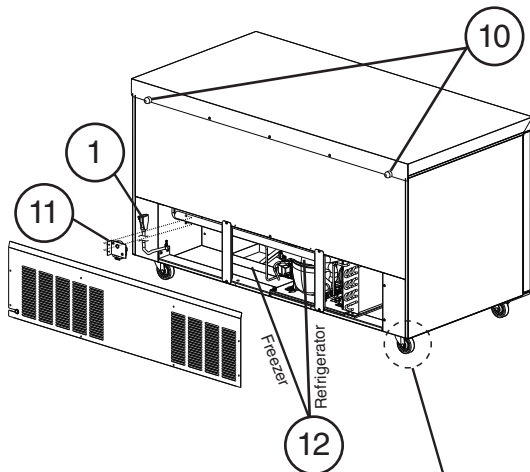
#### Common Parts



For Doors, see Sections "C" and "D"



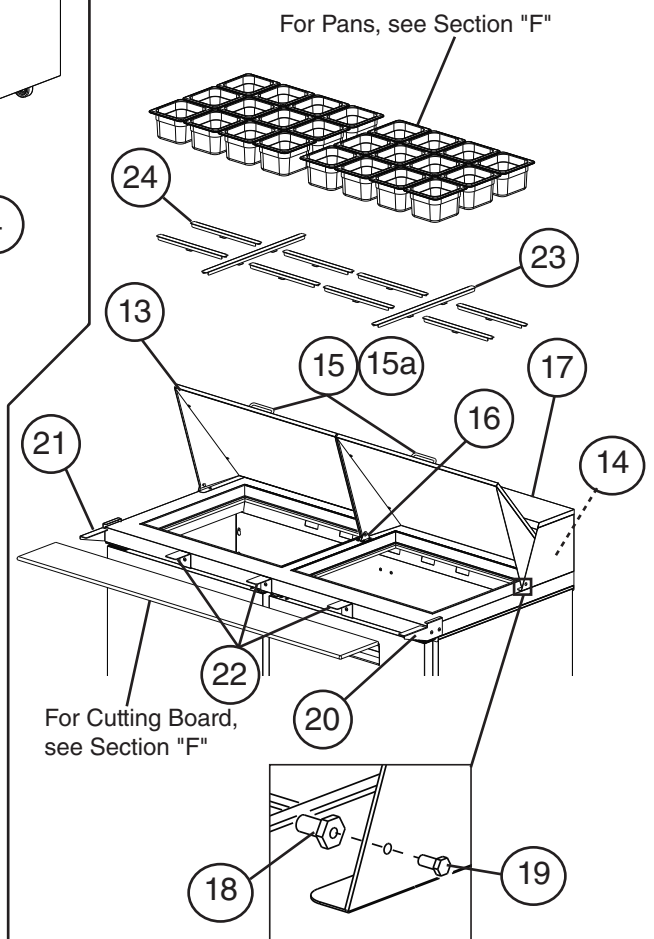
For Drawers, see Section "E"



For Casters, see Section "F"

**Model Shown: CRMF60**

#### Prep Table Specific Parts



For Cutting Board, see Section "F"

**Model Shown: CRMR60-24M**



<b>Title: A. Main Assembly Models: CRMR60 and CRMF60 Undercounter, Worktop, and Prep Table</b>													
Index No.	Description	Material or Model Number	Part Number	Required Number									
				B-5 to D-5	D-6 to D-7	D-8 to E-5 (B)	E-5 (C) to E-5 (M)	E-6 to E-8	E-9 to F-5	F-6			
<b>Common Parts</b>													
1	Power Cord		4A2860-01	1	1	1	1	1	1	1	1		
2	Cabinet Thermostat	<b>Refrigerator Undercounter and Worktop</b>	3A6755-03	1	1	1	1	1	1	1	1		
		<b>Refrigerator Prep Table</b>	3A6755-07	1	1	1	1	1	1	1	1		
		<b>Freezer</b>	3A6755-04	1	1	1	1	1	1	1	1		
3	Dial Plate		3A6787-01	1	1	1	1	1	1	1	1		
4	Dial Knob		3A6788-01	1	1	1	1	1	1	1	1		
5	Rear Pilaster		4A5417-01	2	2	2	2	2	2	2	2		
6	Side and Front Pilaster		4A5524-01	6	6	6	-						
			4A5719-01				6	6	6	6			
7	Shelf		3A2830-09	2	2	2	2	2	2	2	2		
8	Shelf Clip		4A5418-01	8	8	8	8	8	8	8	8		
9	Cabinet Thermometer		461083-01	1	1	1	1	1	1	1	1		
10	Bumpers		3A6696-01	2	2	2	2	2	2	2	2		
11	Defrost Timer	<b>Freezer, Prep Table</b>	3A7925-01	1	1	1	1	1	1	1	1		
12	Condensate Pan	<b>Refrigerator Undercounter and Worktop</b>	3A6758-01	1	1	1	1	1	1	1	1		
		<b>Refrigerator Prep Table</b>		1	1	-							
			1A3373-01			1	1	1	1	1	1		
		<b>Freezer</b>	2A7170-03	1	1	-							
12a	Right Condensate Pan Bracket	<b>Freezer</b>	2A7243-01	1	1	-							
			1A3374-01			1	1	1	1	1	1		
12b	Left Condensate Bracket	<b>Freezer</b>	2A7243-02	1	1	-							
			1A3374-02			1	1	1	1	1	1		
<b>Prep Table Specific Parts</b>													
13	Rail Cover Assembly (includes items 14 through 16)	<b>-8</b>	3A7330A01	1	1	1	1	1	1	1	1		
		<b>-12</b>	3A7331A01	1	1	1	1	1	1	1	1		
		<b>-12M</b>	3A7332A01	1	1	1	1	1	1	1	1		
		<b>-16</b>	3A7346A01	1	1	1	1	1	1	1	1		
		<b>-18M</b>	3A7333A01	1	1	1	1	1	1	1	1		
		<b>-24M</b>	3A7348A01	2	2	2	2	2	2	2	2	2	
14	Tree Clip	<b>-8, -12, -12M, -16, -18M</b>	4A0579-01	2	2	2	2	2	2	2	2		
		<b>-24M</b>		4	4	4	4	4	4	4	4		
15	Rail Handle	<b>-8, -12, -12M, -16, -18M</b>	1A3416-01	1	1	1	1	1	1	1	1		
		<b>-24M</b>		2	2	2	2	2	2	2	2		
15a	Pan Head Screw	<b>-8, -12, -12M, -16, -18M</b>	7C1211412	2	2	2	2	2	2	2	2		
		<b>-24M</b>		4	4	4	4	4	4	4	4		
16	Rail Cover Bracket	<b>-24M</b>	4A5790-01	2	2	2	2	2	2	2	2		

Title: A. Main Assembly Models: CRMR60 and CRMF60 Undercounter, Worktop, and Prep Table													
Index No.	Description	Material or Model Number	Part Number	Required Number									
				B-5 to D-5	D-6 to D-7	D-8 to E-5 (B)	E-5 (C) to E-5 (M)	E-6 to E-8	E-9 to F-5	F-6			
17	Rail Hood (includes items 18 and 19)	-8, -12M	3A7327A01	1	1	1	1	1	1	1			
		-12, -18M	3A7329A01	1	1	1	1	1	1	1			
		-16, -24M	3A7372A01	1	1	1	1	1	1	1			
18	Pivot Pin	-8, -12, -12M, -16, -18M	4A4768-01	2	2	2	2	2	2	2			
		-24M		4	4	4	4	4	4	4			
19	Pivot Bolt	-8, -12, -12M, -16, -18M	4A4769-01	2	2	2	2	2	2	2			
		-24M		4	4	4	4	4	4	4			
20	Right Cutting Board Bracket	-8, -12, -16	4A5496-01	1	1	1	-						
			3A8653-02				1	1	1	-			
			3A8971-02								1		
		-12M, -18M, -24M	1000000393	1	1	1	-						
			SP-5200				1	1	1	-			
			3A8940-02								1		
21	Left Cutting Board Bracket	-8, -12, -16	4A5496-02	1	1	1	-						
			3A8653-01				1	1	1	-			
			3A8971-01								1		
		-12M, -18M, -24M	1000000392	1	1	1	-						
			SP-5200				1	1	1	-			
3A8940-01									1				
22	Center Cutting Board Bracket	-8, -12, -16	4A5905-01								3		
			-12M, -18M, -24M	1000000394	3	3	3	3	3	3	-		
		4A5898-01									3		
23	Rail Divider (front-to-back)	-8 (HS-5188)	3A8904-01							1	1		
										2	2		
										3	3		
		-12M (HS-5184)	3A8855-01								1	1	
										2	2		
										2	2		
24	Rail Divider (side-to-side)	-8 (HS-5189)	3A8905-01							2	2		
				(outer side-to-side)	-12 (HS-5189)						3	3	
					-16 (HS-5189)						4	4	
		(side-to-side)	3A8856-01	-12M (HS-5185)							4	4	
				(outer side-to-side)	-18M (HS-5185)						6	6	
				(side-to-side)	-24M (HS-5185)						8	8	
25	Rail Divider C (center side to side)	-12 (HS-5190)	3A8906-01							1	1		
										2	2		
		-18 (HS-5192)	3A8906-02								1	1	
				-18M (HS-5186)	3A8857-01							2	2

E-8 and earlier must order 23, 24, and if applicable, 25

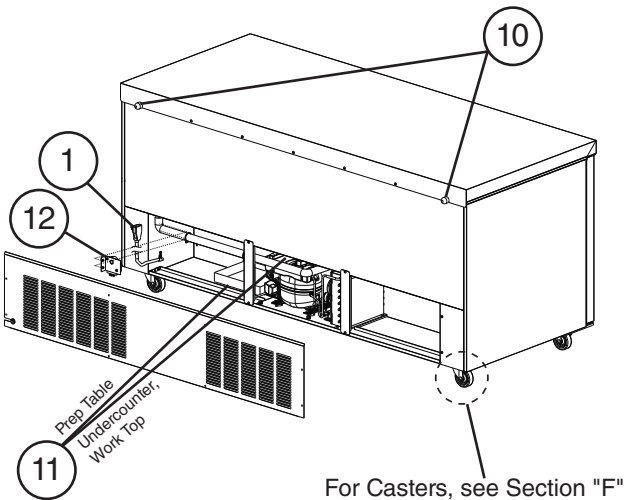
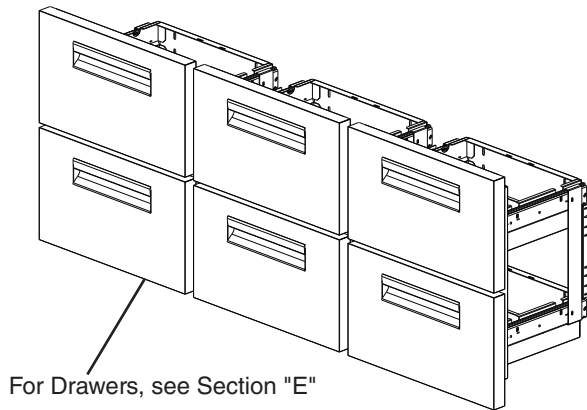
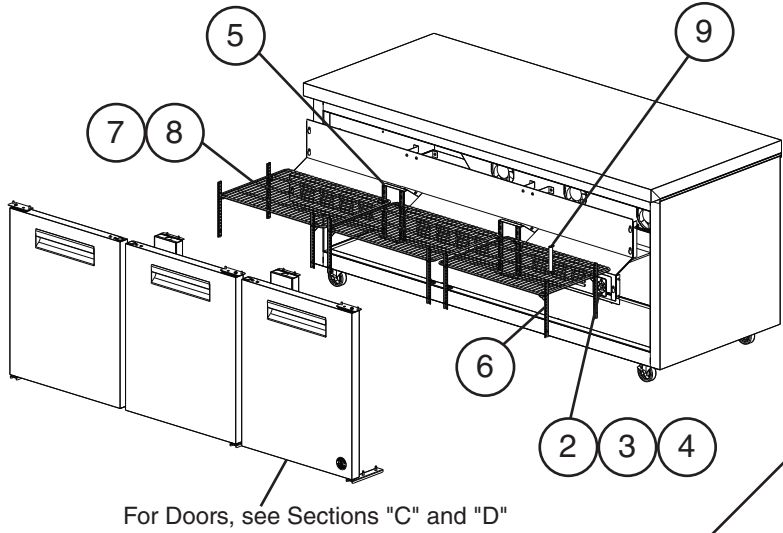
# A. Main Assembly

## CRMR72 Undercounter, Worktop, and Prep Table

B-5 to F-6

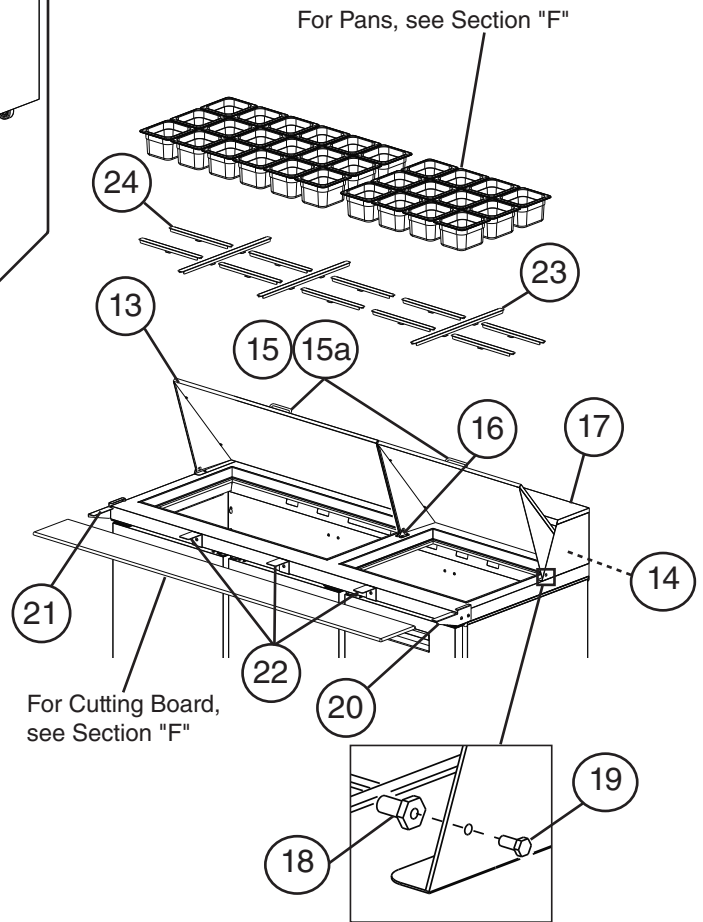
### Undercounter, Worktop, Prep Table

#### Common Parts



Model Shown: CRMR72

#### Prep Table Specific Parts



Model Shown: CRMR72-30M

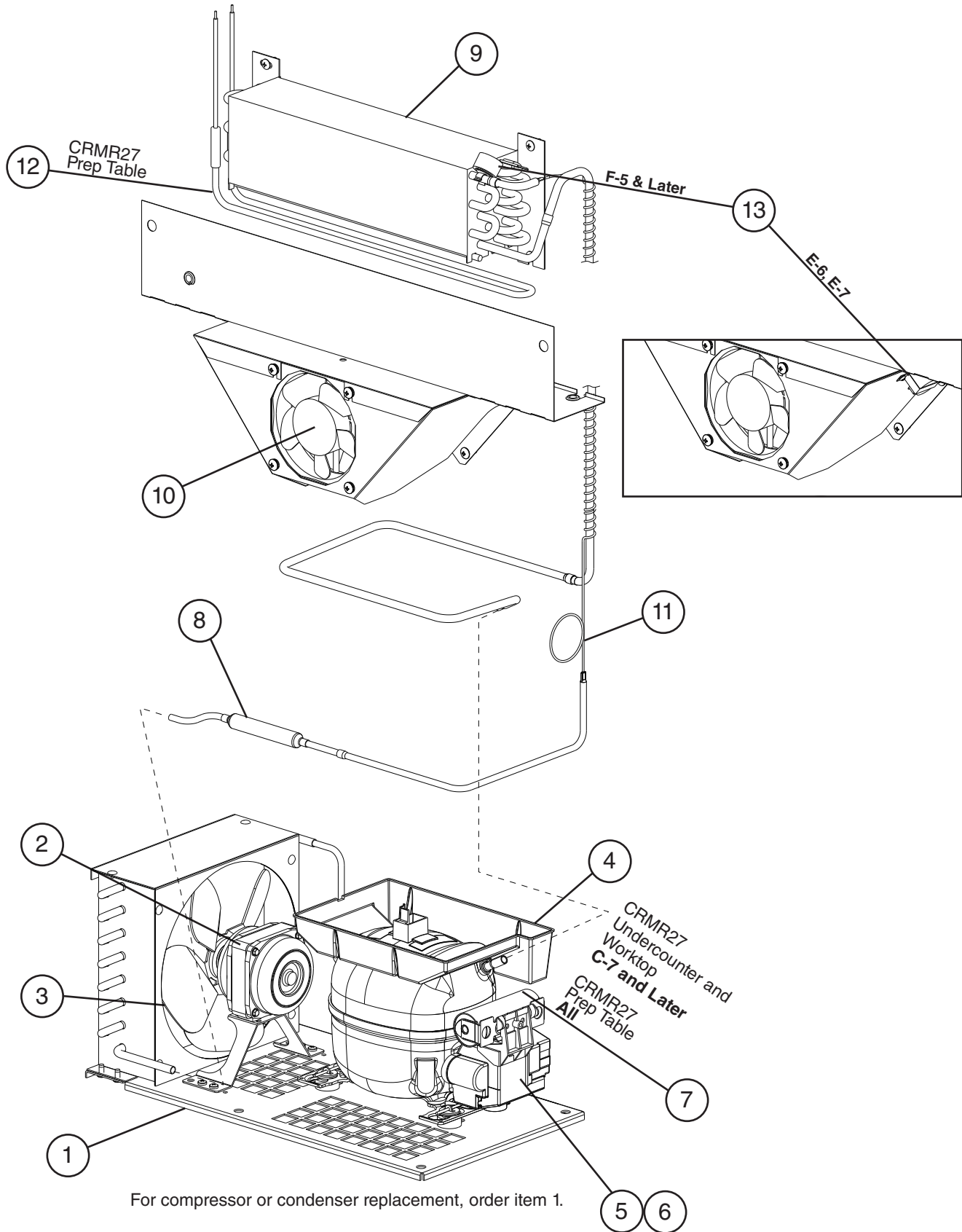
<b>Title: A. Main Assembly    Models: CRMR72 Undercounter, Worktop, and Prep Table</b>												
Index No.	Description	Material or Model Number	Part Number	Required Number								
				B-5 to D-7	D-8 to E-5	E-6 to E-8	E-9 to F-5	F-6				
<b>Common Parts</b>												
1	Power Cord		4A2860-01	1	1	1	1	1				
2	Cabinet Thermostat	<b>Refrigerator Undercounter and Worktop</b>	3A6755-05	1	1	1	1	1				
		<b>Refrigerator Prep Table</b>	3A6755-07	1	1	1	1	1				
3	Dial Plate		3A6787-01	1	1	1	1	1				
4	Dial Knob		3A6788-01	1	1	1	1	1				
5	Rear Pilaster		4A5417-01	4	4	4	4	4				
6	Side and Front Pilaster		4A5524-01	8	8	-						
			4A5719-01			8	8	8				
7	Shelf		3A2830-07	3	3	3	3	3				
8	Shelf Clip		4A5418-01	12	12	12	12	12				
9	Cabinet Thermometer		461083-01	1	1	1	1	1				
10	Bumpers		3A6696-01	2	2	2	2	2				
11	Condensate Pan	<b>Undercounter, Worktop</b>	3A6758-01	1	1	1	1	1				
		<b>Prep Table</b>	2A7170-03	1	-							
			1A3373-01		1	1	1	1				
<b>Prep Table Specific Parts</b>												
12	Defrost Timer		3A7925-01	1	1	1	1	1				
13	Rail Cover (includes items 14 through 16)	<b>-12</b>	3A7331A01	1	1	1	1	1				
		<b>-16</b>	3A7346A01	1	1	1	1	1				
		<b>-18</b>	3A7378A01	1	1	1	1	1				
		<b>-18M</b>	3A7333A01	1	1	1	1	1				
		<b>-24M</b>	3A7348A01	1	1	1	1	1				
		<b>-30M</b>	3A7376A01	1	1	1	1	1				
14	Tree Clip	<b>-12, -16, -18M</b>	4A0579-01	2	2	2	2	2				
		<b>-24M, -30M</b>		4	4	4	4	4				
15	Rail Handle	<b>-12, -16, -18, -18M</b>	1A3416-01	1	1	1	1	1				
		<b>-24M, -30M</b>	1A3416-01	2	2	2	2	2				
15A	Pan Head Screws	<b>-12, -16, -18, -18M</b>	7C1211412	2	2	2	2	2				
		<b>-24M, -30M</b>		4	4	4	4	4				
16	Rail Cover Bracket	<b>-24M, -30M</b>	4A5790-01	2	2	2	2	2				
17	Rail Hood (includes items 18 and 19)	<b>-12, -18M</b>	3A7329A01	1	1	1	1	1				
		<b>-16, -24</b>	3A7372A01	1	1	1	1	1				
		<b>-18, -30M</b>	3A7373A01	1	1	1	1	1				
18	Pivot Pin	<b>-12, -16, -18M</b>	4A4768-01	2	2	2	2	2				
		<b>-24M, -30M</b>		4	4	4	4	4				
19	Pivot Bolt	<b>-12, -16, -18M</b>	4A4769-01	2	2	2	2	2				
		<b>-24M, -30M</b>		4	4	4	4	4				

Title: A. Main Assembly Models: CRMR72 Undercounter, Worktop, and Prep Table													
Index No.	Description	Material or Model Number	Part Number	Required Number									
				B-5 to D-7	D-8 to E-5	E-6 to E-8	E-9 to F-5	F-6					
20	Right Cutting Board Bracket	<b>-12, -16, -18</b>	4A5496-01	1	1	-							
			3A8653-02			1	1	-					
			3A8971-02					1					
		<b>-18M, -24M, -30M</b>	1000000393	1	1	-							
			SP-5200			1	1	-					
		3A8940-02					1						
21	Left Cutting Board Bracket	<b>-12, -16, -18</b>	4A5496-02	1	1	-							
			3A8653-01			1	1	-					
			3A8971-01					1					
		<b>-18M, -24M, -30M</b>	1000000392	1	1	-							
			SP-5200			1	1	-					
		3A8940-01					1						
22	Center Cutting Board Bracket	<b>-12, -16, -18</b>	4A5905-01						3				
			<b>-18M, -24M, -30M</b>	1000000394	3	3	3	3	-				
		4A5898-01							3				
23	Rail Divider (front-to-back)	<b>-12, -18</b> (HS-5188)	3A8904-01	E-8 and earlier must order items 23, 24, and if applicable, 25					2	2			
			<b>-16</b> (HS-5188)						3	3			
		<b>-18M, -24M</b> (HS-5184)	3A8855-01						2	2			
			<b>-30M</b> (HS-5184)						3	3			
24	Rail Divider (side-to-side)	<b>-12</b> (HS-5189)	3A8905-01	E-8 and earlier must order items 23, 24, and if applicable, 25					2	2			
	(outer side to side)	<b>-16</b> (HS-5189)							2	2			
		<b>-18</b> (HS-5191)	3A8905-02							2	2		
	(outer side to side)	<b>-18M</b> (HS-5185)	3A8856-01							4	4		
	(side-to-side)	<b>-24M</b> (HS-5185)								8	8		
	(outer side to side)	<b>-30M</b> (HS-5185)							8	8			
25	Rail Divider C (center side-to-side)	<b>-12</b> (HS-5190)	3A8906-01	E-8 and earlier must order items 23, 24, and if applicable, 25					1	1			
		<b>-16</b> (HS-5190)								2	2		
		<b>-18</b> (HS-5192)	3A8906-02							1	1		
		<b>-18M, -30M</b> (HS-5186)	3A8857-01							2	2		

## B. Refrigeration Circuit

### CRMR27 Undercounter, Worktop, and Prep Table

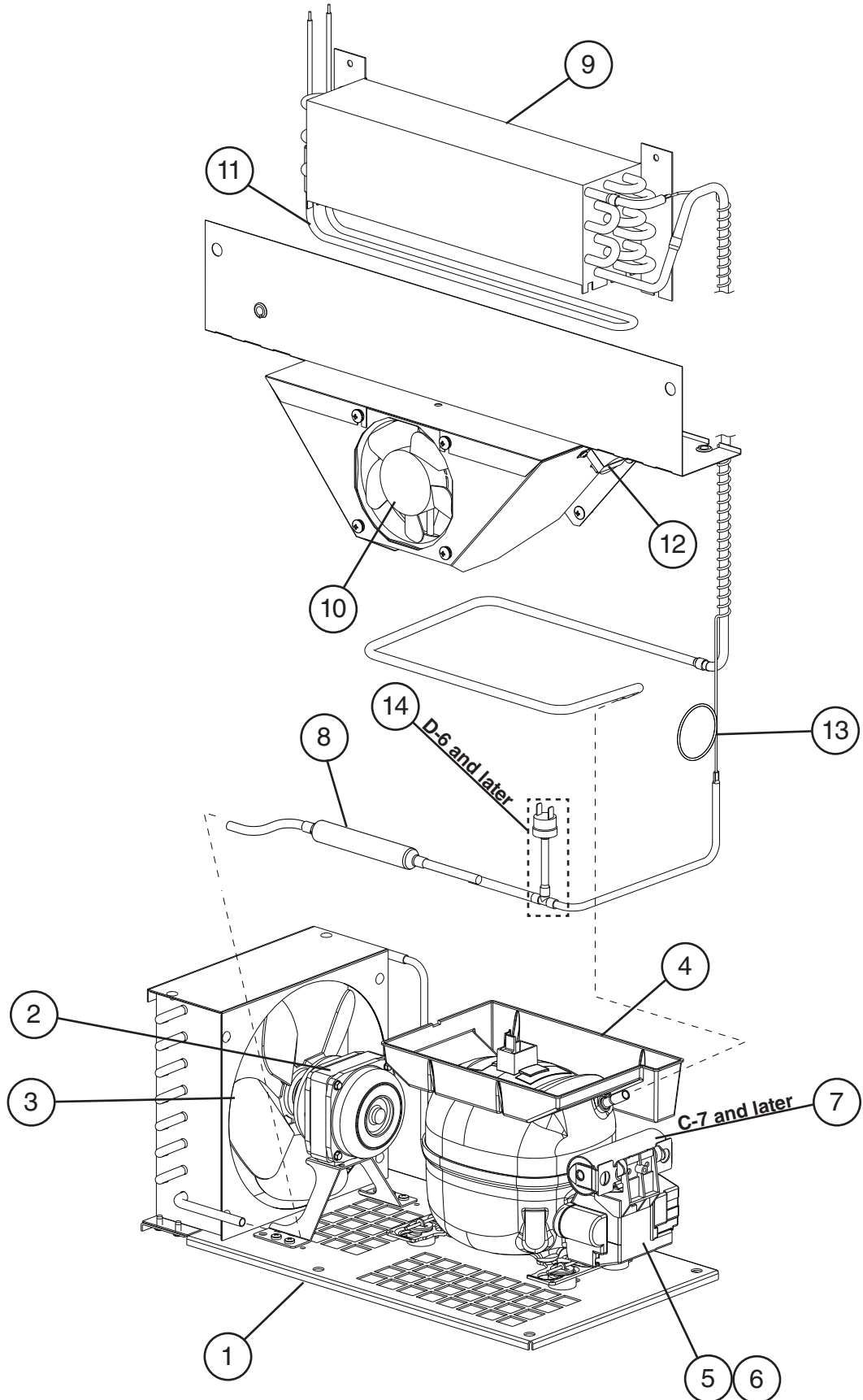
A-5 to F-6



Title: B. Refrigeration Circuit Models: CRMR27 Undercounter, Worktop, Prep Table											
Index No.	Description	Material or Model Number	Part Number	Required Number							
				A-5 to B-5	C-5 C-6	C-7 to E-5	E-6 to F-6				
1	Condensing Unit (includes compressor, condenser, and items 2 through 6; C-6 and later also include items 7 and 8; compressor and condenser are not sold individually)	<b>Undercounter, Worktop</b>	3A6801-01	1	-						
			3A8106-01		1	1	1				
	Condensing Unit (includes compressor, condenser, and items 2 through 7; C-7 and later also include item 8; compressor and condenser are not sold individually)	<b>Prep Table</b>	1000000273	1	1	-					
			3A8106-01			1	1				
2	Condenser Fan Motor		3A6798-01	1	1	1	1				
3	Condenser Fan Blade		3A6799-01	1	1	1	1				
4	Condensate Pan		3A6758-01	1	1	1	1				
5	Compressor External Protector		3A6746-01	1	1	1	1				
6	Start Relay	<b>Undercounter, Worktop</b>	3A6745-01	1	-						
			1000000412		1	1	1				
		<b>Prep Table</b>	1000000412	1	1	1	1				
7	Start Capacitor	<b>Undercounter, Worktop</b> 233-280MFD, 165VAC	1000000279		1	1	1				
			<b>Prep Table</b> 233-280MFD, 165VAC	1000000279	1	1	1	1			
8	Drier		4A5576-01	1	1	1	1				
9	Evaporator		2A6627-01	1	1	1	1				
10	Evaporator Fan Motor		4A5343-01	1	1	1	1				
11	Capillary Tube Replacement Kit		SP-5119	1	1	1	1				
12	Defrost Heater	<b>Prep Table</b>	3A6443-03			1	1				
13	Defrost Safety Thermostat	<b>Prep Table</b>	4A5853-01				1				

## B. Refrigeration Circuit CRM27 Undercounter and Worktop

A-5 to F-6



For compressor or condenser replacement, order item 1.

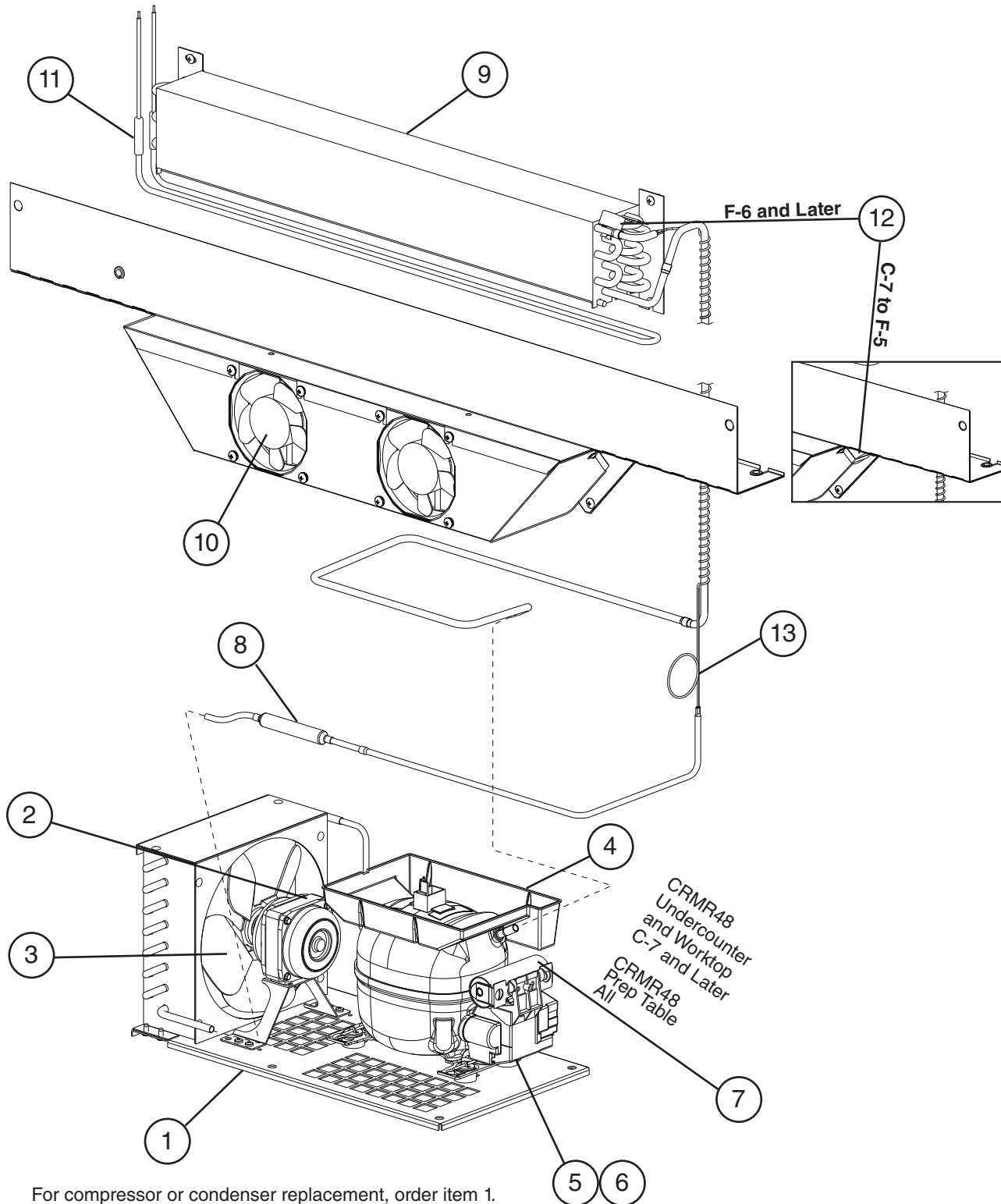


Title: B. Refrigeration Circuit    Models: CRMF27 Undercounter and Worktop												
Index No.	Description	Material or Model Number	Part Number	Required Number								
				A-5 to C-5	C-6 to D-5	D-6	D-7 to F-6					
1	Condensing Unit (includes compressor, condenser, and items 2 through 6; C-7 and later also include items 7 and 8; compressor and condenser are not sold individually)		3A6802-01	1	-							
			3A7206-01		1	1	-					
			3A8107-01				1					
2	Condenser Fan Motor		3A6798-01	1	1	1	1					
3	Condenser Fan Blade		3A6799-01	1	1	1	1					
4	Condensate Pan		3A6758-01	1	1	1	1					
5	Compressor External Protector		3A6774-01	1	1	1	1					
6	Start Relay		3A6775-01	1	-							
			3A7232-01		1	1	1					
7	Start Capacitor	270-327MFD, 165VAC	4A5525-01		1	1	1					
8	Drier		4A5576-01	1	1	1	1					
9	Evaporator		2A6627-01	1	1	1	1					
10	Evaporator Fan Motor		4A5343-01	1	1	1	1					
11	Defrost Heater		3A6443-03	1	1	1	1					
12	Defrost Safety Thermostat		4A0954-02			1	1					
13	Capillary Tube Replacement Kit		SP-5120	1	1	1	1					
14	High-Pressure Switch		4A2516-01			1	1					

## B. Refrigeration Circuit

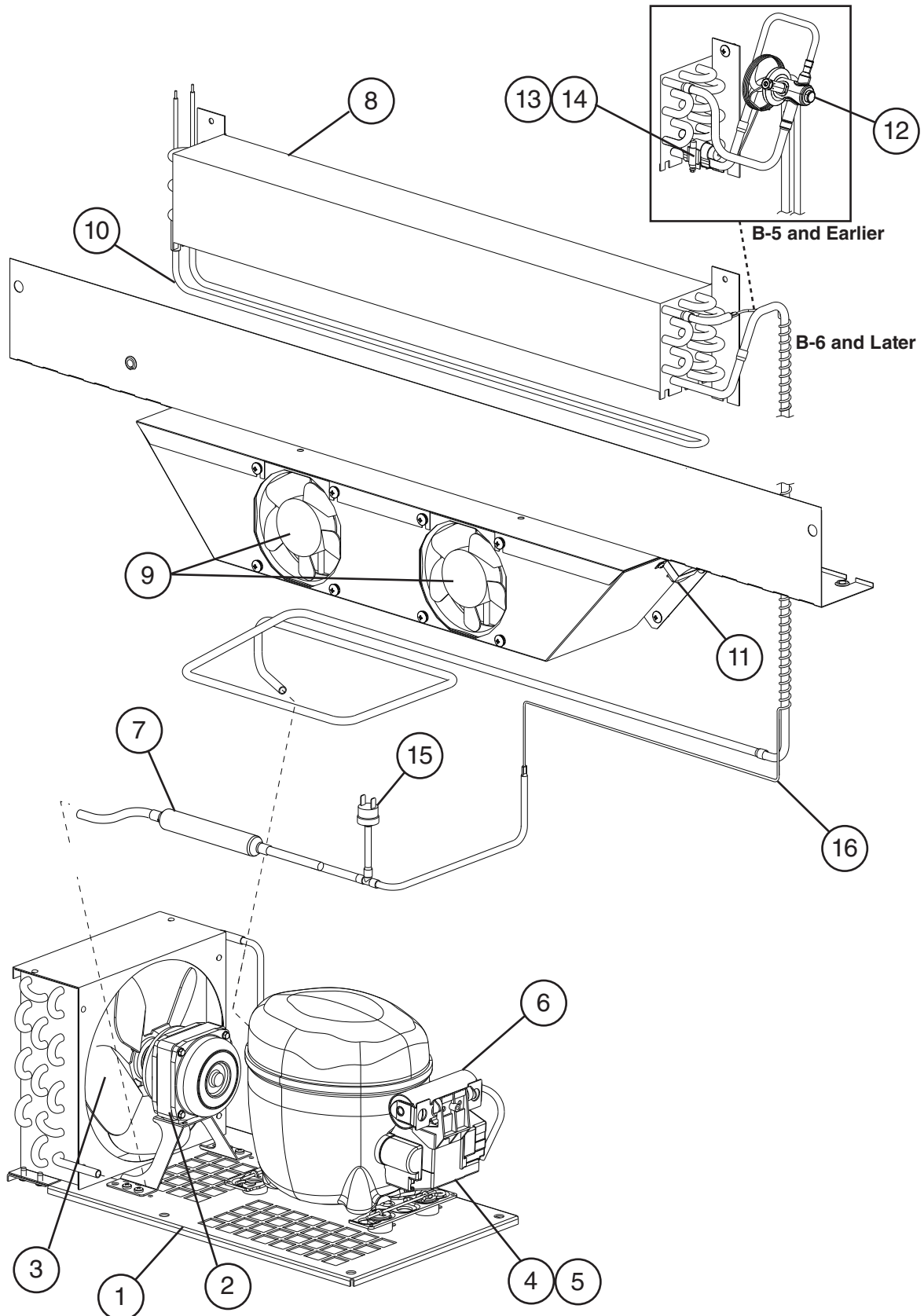
### CRMR48 Undercounter, Worktop, and Prep Table

A-5 to F-6



Title: B. Refrigeration Circuit Models: CRMR48 Undercounter, Worktop, and Prep Table												
Index No.	Description	Material or Model Number	Part Number	Required Number								
				A-5 to C-5	C-6	C-7 to F-5	F-6					
1	Condensing Unit (includes compressor, condenser, and items 2 through 6; C-6 and later also include items 7 and 8; compressor and condenser are not sold individually)	<b>Undercounter, Worktop</b>	3A6801-01	1	-							
			3A8106-01		1	1	1					
	Condensing Unit (includes compressor, condenser, and items 2 through 8; compressor and condenser are not sold individually)	<b>Prep Table</b>	1000000273	1	1	-						
			3A8106-01			1	1					
2	Condenser Fan Motor		3A6798-01	1	1	1	1					
3	Condenser Fan Blade		3A6799-01	1	1	1	1					
4	Condensate Pan		3A6758-01	1	1	1	1					
5	Compressor External Protector		3A6746-01	1	1	1	1					
6	Start Relay	<b>Undercounter, Worktop</b>	3A6745-01	1	-							
			1000000412		1	1	1					
		<b>Prep Table</b>	1000000412	1	1	1	1					
7	Start Capacitor	<b>Undercounter, Worktop</b> 233-280MFD, 165VAC	1000000279		1	1	1					
			<b>Prep Table</b> 233-280MFD, 165VAC	1000000279	1	1	1	1				
8	Drier		4A5576-01	1	1	1	1					
9	Evaporator		2A6627-02	1	1	1	1					
10	Evaporator Fan Motor		4A5343-01	2	2	2	2					
11	Defrost Heater	<b>Prep Table</b>	3A6643-02			1	1					
12	Defrost Safety Thermostat	<b>Prep Table</b>	4A0954-02			1	-					
			4A5853-01				1					
13	Capillary Tube Replacement Kit		SP-5119	1	1	1	1					

## B. Refrigeration Circuit CRMF48 Undercounter and Worktop A-5 to F-6



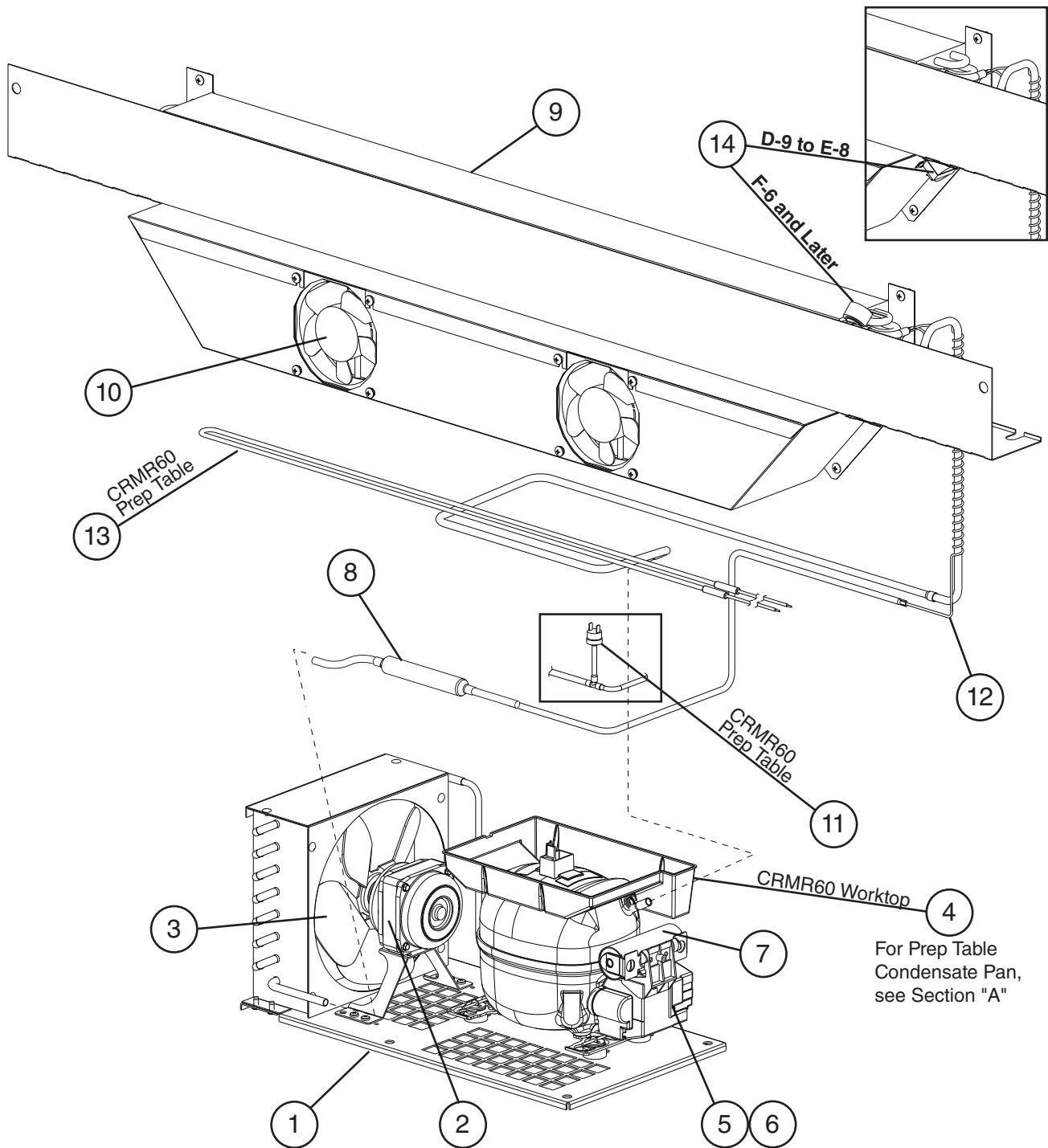
For compressor or condenser replacement, order item 1.

Title: B. Refrigeration Circuit    Models: CRMF48 Undercounter and Worktop											
Index No.	Description	Material or Model Number	Part Number	Required Number							
				A-5 B-5	B-6 C-5	C-6 to F-6					
1	Condensing Unit (includes compressor, condenser, and items 2 through 6; C-6 and later also include item 7; compressor and condenser are not sold individually)		3A6934-01	1	1	-					
			3A8108-01			1					
2	Condenser Fan Motor		3A6798-01	1	1	1					
3	Condenser Fan Blade		3A6799-01	1	1	1					
4	Compressor External Protector		3A6936-01	1	1	1					
5	Start Relay		3A6937-01	1	1	1					
6	Start Capacitor	378-454MFD, 115VAC	3A6938-01	1	1	1					
7	Drier		4A5576-01	1	1	1					
8	Evaporator		2A6627-02	1	1	1					
9	Evaporator Fan Motor		4A5471-01	2	2	2					
10	Defrost Heater		3A6443-02	1	1	1					
11	Defrost Thermostat		4A0954-02	1	1	1					
12	Thermostatic Expansion Valve		4A5476-01	1	-						
13	Thermostatic Expansion Valve Bulb Holder		3A6991-01	1	-						
14	Clamp		443461-01	1	-						
15	High-Pressure Switch		4A2516-02	1	1	1					
16	Capillary Tube Replacement Kit		SP-5121		1	1					

## B. Refrigeration Circuit

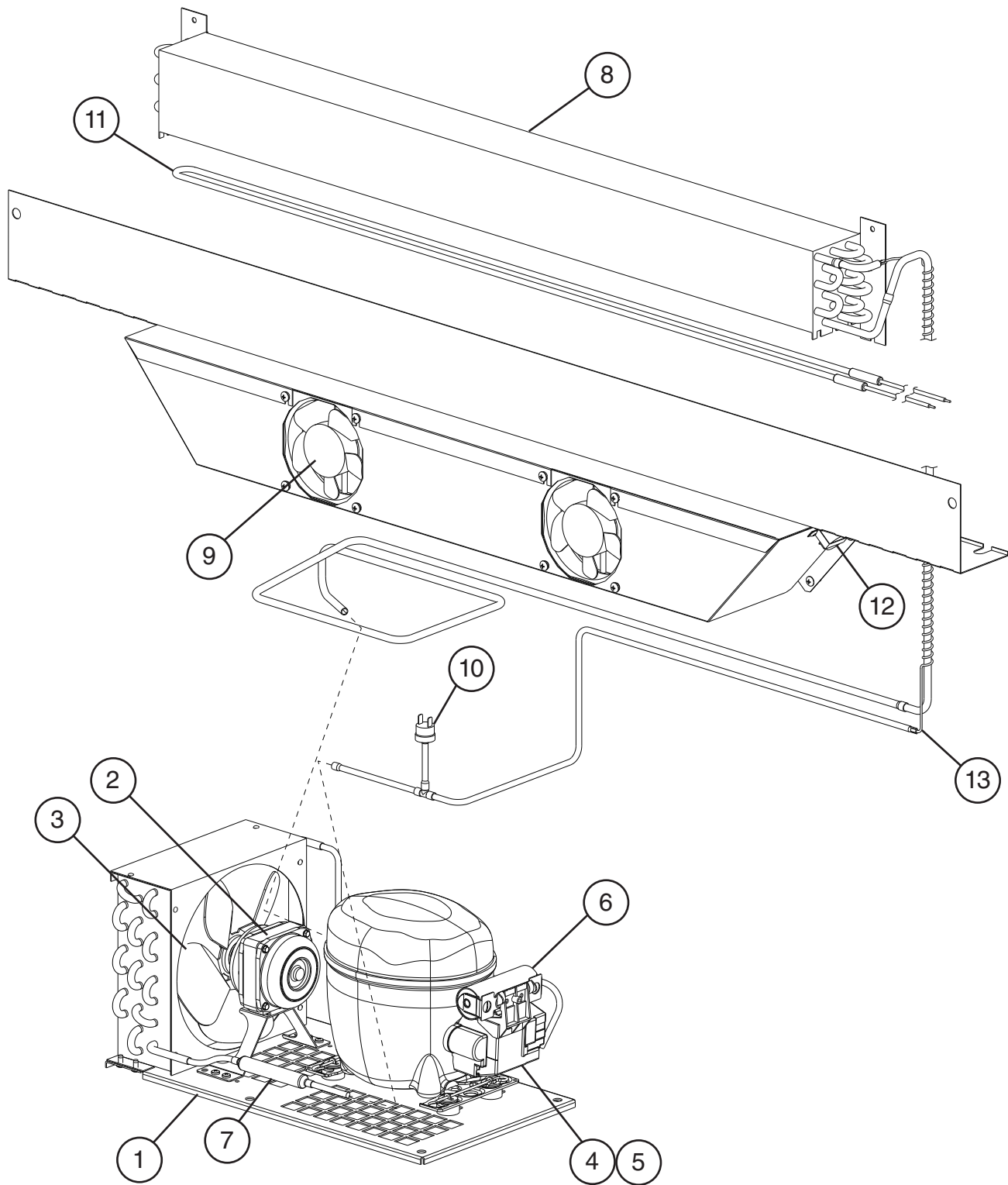
### CRMR60 Undercounter, Worktop, and Prep Table

B-5 to F-6



Title: B. Refrigeration Circuit Models: CRMR60 Undercounter, Worktop, and Prep Table												
Index No.	Description	Material or Model Number	Part Number	Required Number								
				B-5 C-5	C-6 to D-6	D-9 to E-7	E-8 to F-6					
1	Condensing Unit (includes compressor, condenser, and items 2 through 7; C-6 and later also include item 8; compressor and condenser are not sold individually)	<b>Undercounter, Worktop</b>	3A7206-01	1	-							
			3A8107-01		1	1	1					
		<b>Prep Table</b>	3A6934-01	1	-							
			3A8108-01		1	1	1					
2	Condenser Fan Motor		3A6798-01	1	1	1	1					
3	Condenser Fan Blade		3A6799-01	1	1	1	1					
4	Condensate Pan	<b>Worktop</b>	3A6758-01	1	1	1	1					
5	Compressor External Protector	<b>Worktop</b>	3A6774-01	1	1	1	1					
		<b>Prep Table</b>	3A6936-01	1	1	1	1					
6	Start Relay	<b>Worktop</b>	3A7232-01	1	1	1	1					
		<b>Prep Table</b>	3A6937-01	1	1	1	1					
7	Start Capacitor	<b>Worktop</b> 270-327MFD, 165VAC	4A5525-01	1	1	1	1					
		<b>Prep Table</b> 378-454MFD, 115VAC	3A6938-01	1	1	1	1					
8	Drier		4A5576-01	1	1	1	1					
9	Evaporator		2A6627-03	1	1	1	1					
10	Evaporator Fan Motor		4A5343-01	2	2	2	2					
11	High-Pressure Switch	<b>Prep Table</b>	4A2516-01	1	1	1	1					
12	Capillary Tube Replacement Kit	<b>Undercounter, Worktop</b>	SP-5120	1	1	1	1					
		<b>Prep Table</b>	SP-5121	1	1	1	1					
13	Defrost Heater	<b>Prep Table</b>	3A7115-03			1	1					
14	Defrost Thermostat	<b>Prep Table</b>	SP-5131			1	-					
			4A5853-01				1					

**B. Refrigeration Circuit**  
**CRMF60 Undercounter and Worktop**  
C-5 to F-6

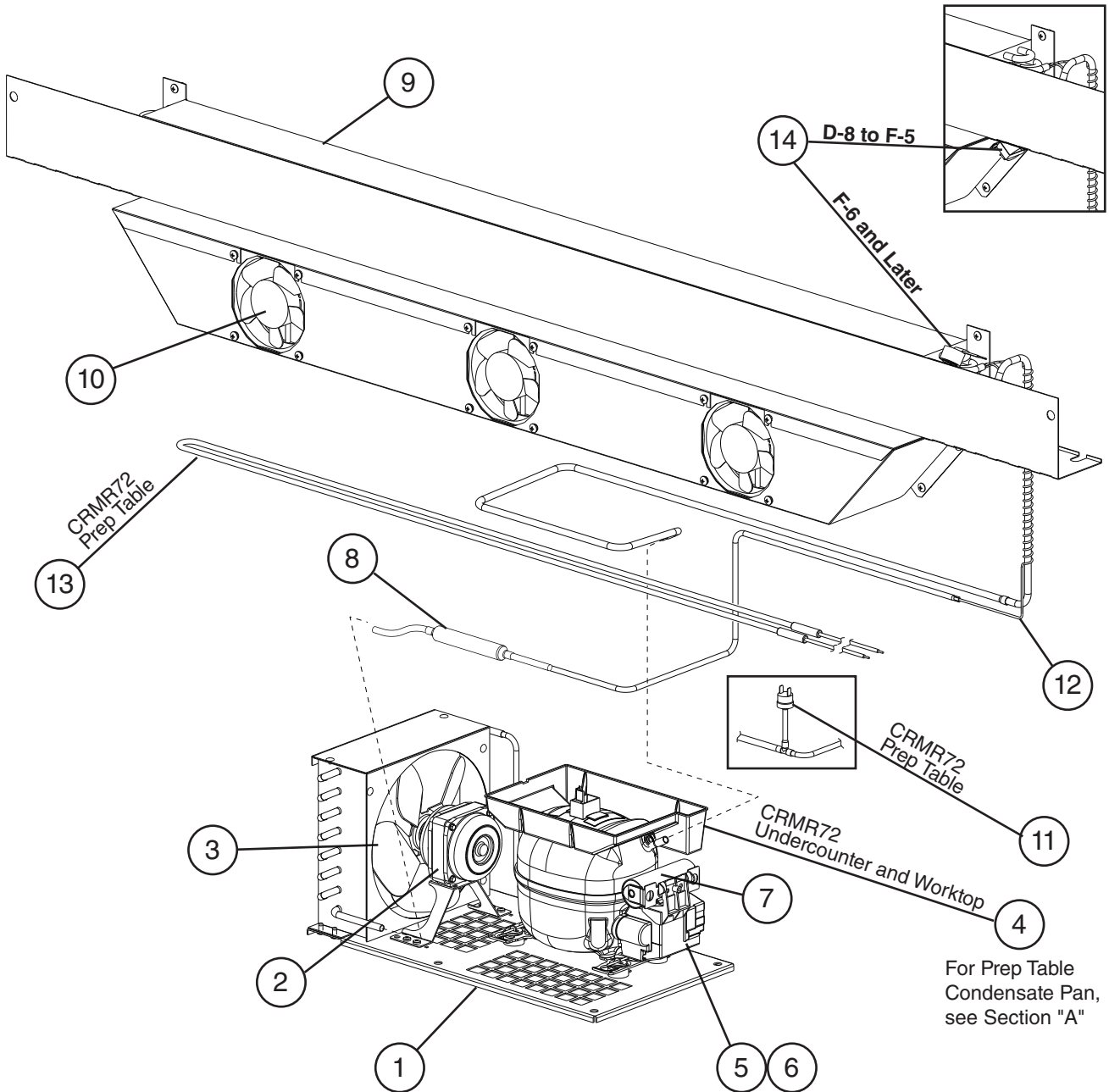


For compressor or condenser replacement, order item 1.



Title: B. Refrigeration Circuit    Models: CRMF60 Undercounter and Worktop											
Index No.	Description	Material or Model Number	Part Number	Required Number							
				C-5 to D-6	D-8 to F-6						
1	Condensing Unit (includes compressor, condenser, and items 2 through 7; compressor and condenser are not sold individually)		3A8108-01	1	1						
2	Condenser Fan Motor		3A6798-01	1	1						
3	Condenser Fan Blade		3A6799-01	1	1						
4	Compressor External Protector		3A6936-01	1	1						
5	Start Relay		3A6937-01	1	1						
6	Start Capacitor	378-454MFD, 115VAC	3A6938-01	1	1						
7	Drier		4A5576-01	1	1						
8	Evaporator		2A6627-03	1	1						
9	Evaporator Fan Motor		4A5471-01	2	2						
10	High-Pressure Switch		4A2516-01	1	1						
11	Defrost Heater		3A7115-01	1	-						
			3A7115-03		1						
12	Defrost Thermostat		4A0954-02	1	1						
13	Capillary Tube Replacement Kit		SP-5121	1	1						

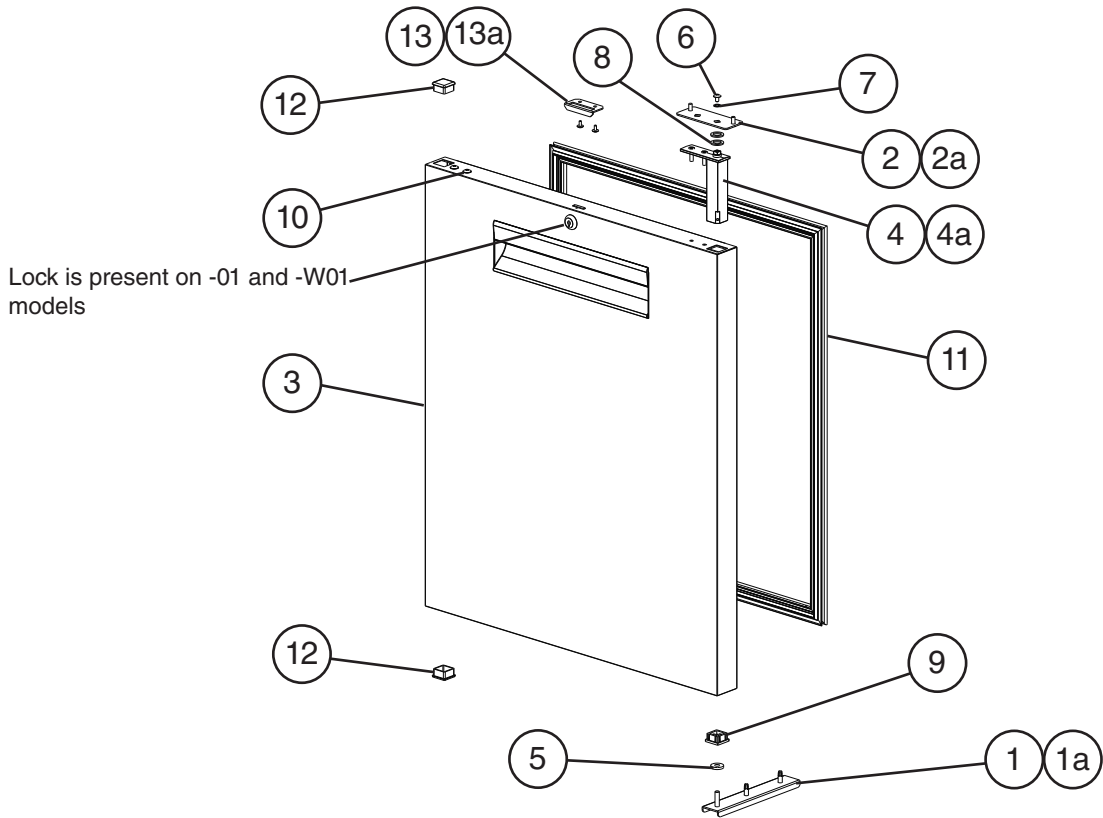
**B. Refrigeration Circuit**  
**CRMR72 Undercounter, Worktop, Prep Table**  
 B-5 to F-6



For compressor or condenser replacement, order item 1.

Title: B. Refrigeration Circuit    Models: CRMR72 Undercounter, Worktop, and Prep Table												
Index No.	Description	Material or Model Number	Part Number	Required Number								
				B-5 C-5	C-6 to D-7	D-8	D-9 to F-6					
1	Condensing Unit (includes compressor, condenser, and items 2 through 7; C-6 and later also include item 8; compressor and condenser are not sold individually)	<b>Undercounter, Worktop</b>	3A7206-01	1	-							
			3A8107-01		1	1	1					
		<b>Prep Table</b>	3A6934-01	1	-							
			3A8108-01		1	1	1					
2	Condenser Fan Motor		3A6798-01	1	1	1	1					
3	Condenser Fan Blade		3A6799-01	1	1	1	1					
4	Condensate Pan	<b>Undercounter, Worktop</b>	3A6758-01	1	1	1	1					
5	Compressor External Protector	<b>Undercounter, Worktop</b>	3A6774-01	1	1	1	1					
		<b>Prep Table</b>	3A6936-01	1	1	1	1					
6	Start Relay	<b>Undercounter, Worktop</b>	3A7232-01	1	1	1	1					
		<b>Prep Table</b>	3A6937-01	1	1	1	1					
7	Start Capacitor	<b>Undercounter, Worktop</b>	4A5525-01 270-327MFD, 165VAC	1	1	1	1					
		<b>Prep Table</b>	3A6938-01 378-454MFD, 115VAC	1	1	1	1					
8	Drier		4A5576-01	1	1	1	1					
9	Evaporator		2A6627-04	1	1	1	1					
10	Evaporator Fan Motor		4A5343-01	3	3	3	3					
11	High-Pressure Switch	<b>Prep Table</b>	4A2516-01	1	1	1	1					
12	Capillary Tube Replacement Kit	<b>Undercounter, Worktop</b>	SP-5120	1	1	1	1					
		<b>Prep Table</b>	SP-5121	1	1	1	1					
13	Defrost Heater	<b>Prep Table</b>	3A7115-04			1	1					
14	Defrost Safety Thermostat	<b>Prep Table</b>	SP-5132			1	-					
			4A5853-01				1					

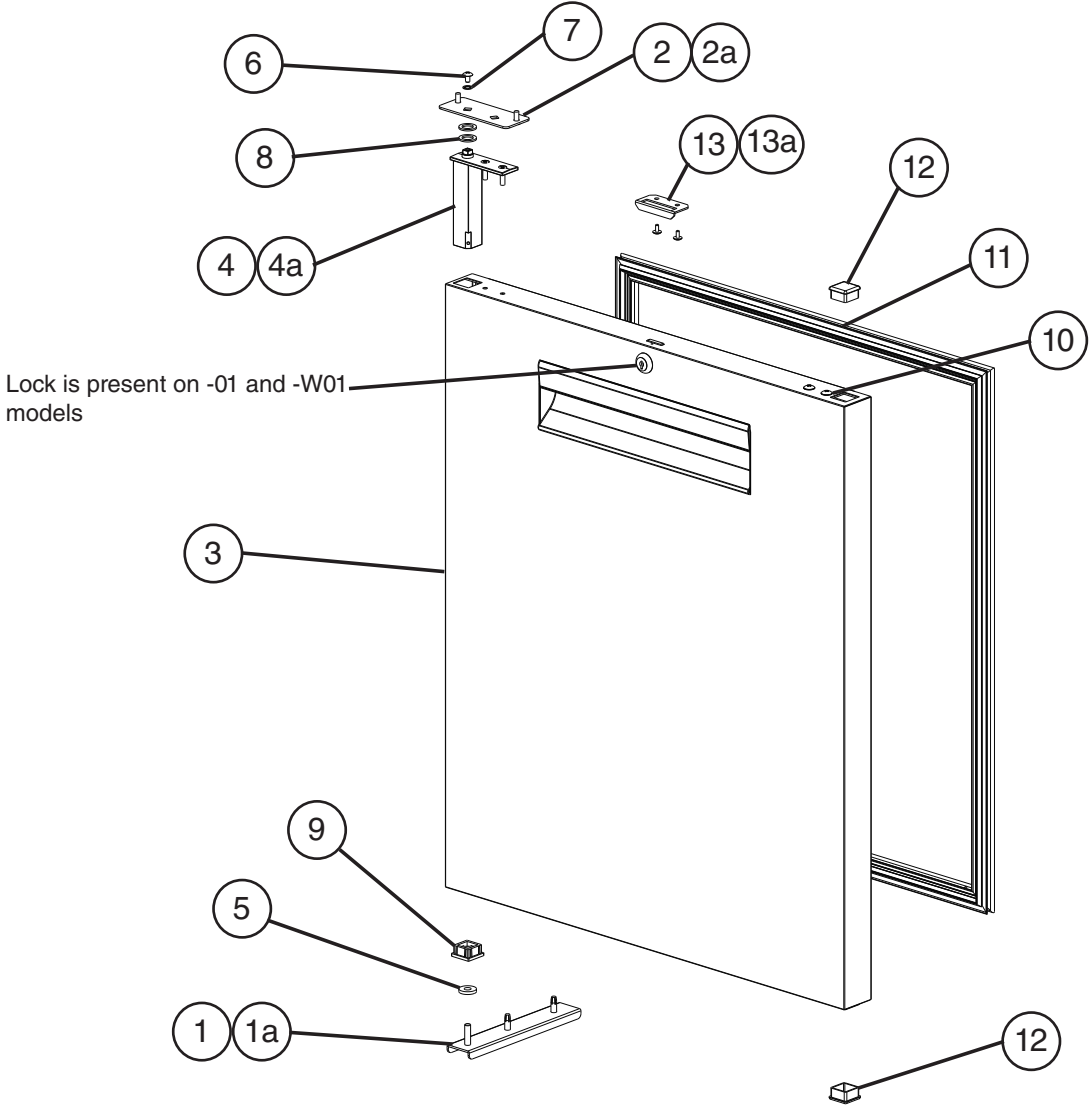
### C. Door-Right Hinged Undercounter, Worktop, Prep Table A-5 to F-6



Title: C. Door-Right Hinged Models: Undercounter, Worktop, Prep Table										
Index No.	Description	Material or Model Number	Part Number	Required Number						
				A-5 to D-6 (D)	D-6 (E) to F-6					
1	Lower Hinge Bracket		3A6681G01	1	1					
1a	Hex Head Tapping Bolt	1/4-20x3/4	4A5213-01	2	2					
2	Upper Hinge Bracket		3A6810-01	1	1					
2a	Truss Head Screw	5x12, SS	7C32-0512	2	2					

Title: C. Door-Right Hinged Models: Undercounter, Worktop, Prep Table										
Index No.	Description	Material or Model Number	Part Number	Required Number						
				A-5 to D-6 (D)	D-6 (E) to F-6					
3	Door Assembly without Locks (includes items 4 through 12)	<b>CRMR27 (All except -01 and -W01)</b> <b>CRMF27 (All except -01 and -W01)</b>	2A6594G01	1	-					
			2A7322G01		1					
		<b>CRMR48 (All except -01 and -W01)</b> <b>CRMF48 (All except -01 and -W01)</b> <b>CRMR72 (All)</b>	2A6596G01	1	-					
			2A7324G01		1					
		<b>CRMR60 (All)</b> <b>CRMF60 (All)</b>	2A6778G01	1	-					
		2A7328G01		1						
	Door Assembly with Locks (includes items 4 through 12)	<b>CRMR27-01</b> <b>CRMR27-W01</b> <b>CRMF27-01</b> <b>CRMF27-W01</b>	1A2421G01	1	-					
			1A7323G01		1					
		<b>CRMR48-01</b> <b>CRMR48-W01</b> <b>CRMF48-01</b> <b>CRMF48-W01</b>	2A6761G01	1	-					
			2A7327G01		1					
4	Hinge Spring Cartridge (includes items 5 through 9)		3A6258-01	1	1					
4a	Countersunk Screw	5x20, SS	7C42-0520	2	2					
5	Thrust Washer		4A5234-01	1	1					
6	Screw		4A5230-01	1	1					
7	Lockwasher		4A5231-01	1	1					
8	Thrust Washer		4A5233-01	2	2					
9	Bearing		4A5232-01	1	1					
10	Truss Head Screw (filler screws)	5x10, SS	7C32-0510	2	2					
11	Gasket	<b>CRMR27 (All)</b> <b>CRMF27 (All)</b>	2A5192-05	1	-					
			2A6996-05		1					
		<b>CRMR48 (All)</b> <b>CRMF48 (All)</b> <b>CRMR72 (All)</b>	2A5192-06	1	-					
			2A6996-06		1					
		<b>CRMR60 (All)</b> <b>CRMF60 (All)</b>	2A5192-09	1	-					
	2A6996-09		1							
12	End Cap		4A5432-01	2	2					
13	Strike Plate for Doors with Locks	<b>-01 and -W01 Models</b>	4A5493-01	1	1					
13a	T2 Screw	<b>-01 and -W01 Models</b> 4x8, SS	7P32-0408	2	2					

**D. Door-Left Hinged**  
**Undercounter, Worktop, Prep Table**  
A-5 to F-6



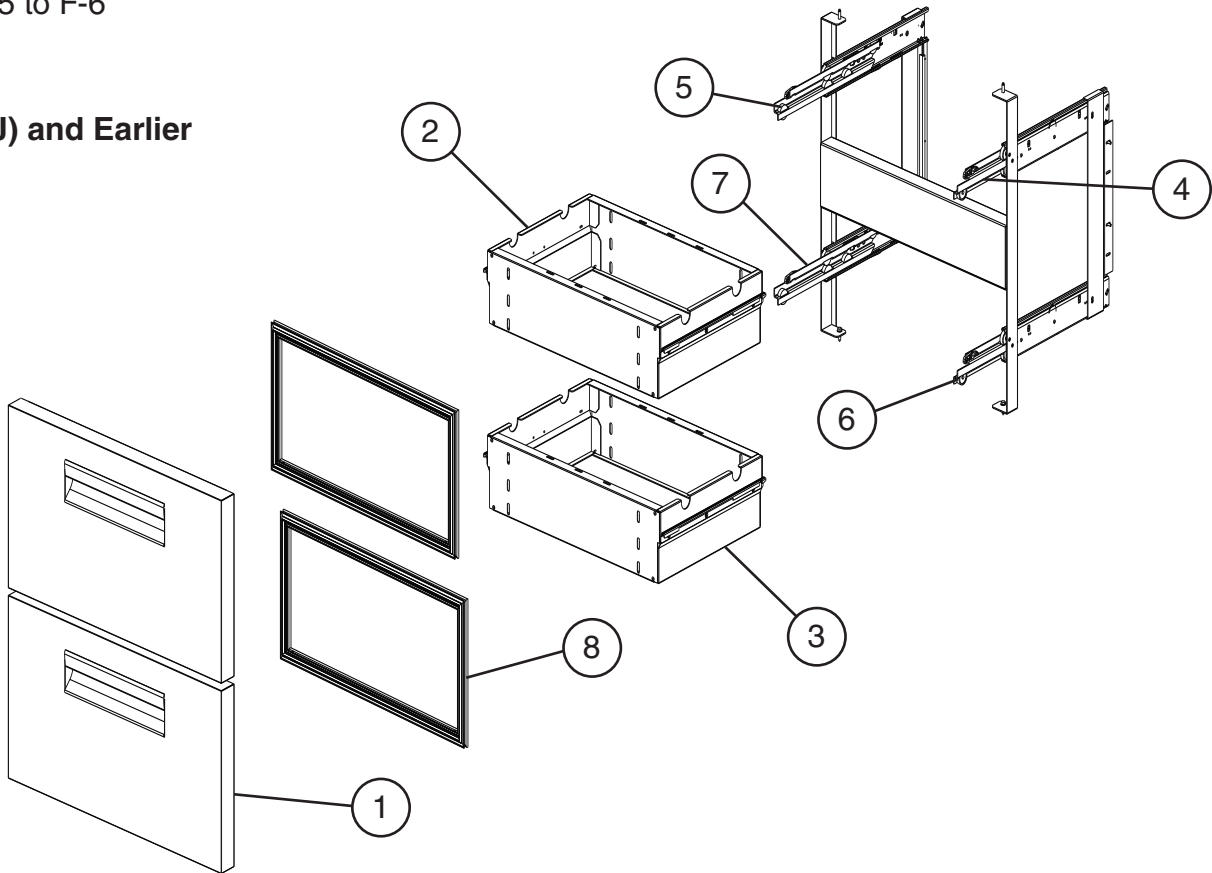
Title: D. Door-Left Hinged Models: Undercounter, Worktop, Prep Table											
Index No.	Description	Material or Model Number	Part Number	Required Number							
				B-5 to D-6 (D)	D-6 (E) to F-6						
1	Lower Hinge Bracket		3A6681G01	1	1						
1a	Hex Head Tapping Bolt	1/4-20x3/4	4A5213-01	2	2						
2	Upper Hinge Bracket		3A6810-01	1	1						
2a	Truss Head Screw	5x12, SS	7C32-0512	2	2						
3	Door Assembly without Locks (includes items 4 through 12)	<b>CRMR48 (All except -01 and -W01)</b> <b>CRMF48 (All except -01 and -W01)</b> <b>CRMR72 (All)</b>	2A6598G01	1	-						
			2A7325G01		1						
			<b>CRMR60 (All)</b> <b>CRMF60 (All)</b>	2A6787G01	1	-					
			2A7329G01		1						
	Door Assembly with Locks (includes items 4 through 12)	<b>CRMR48-01</b> <b>CRMR48-W01</b> <b>CRMF48-01</b> <b>CRMF48-W01</b>	2A6759G01	1	-						
			2A7326G01		1						
4	Hinge Spring Cartridge (includes items 5 through 9)		3A6258-01	1	1						
4a	Countersunk Screw	5x20, SS	7C42-0520	2	2						
5	Thrust Washer		4A5234-01	1	1						
6	Screw		4A5230-01	1	1						
7	Lockwasher		4A5231-01	1	1						
8	Thrust Washer		4A5233-01	2	2						
9	Bearing		4A5232-01	1	1						
10	Truss Head Screw (filler screws)	5x10, SS	7C32-0510	2	2						
11	Gasket	<b>CRMR48 (All)</b> <b>CRMF48 (All)</b> <b>CRMR72 (All)</b>	2A5192-06	1	-						
			2A6996-06		1						
			<b>CRMR60 (All)</b>	2A5192-09	1	-					
			2A6996-09		1						
12	End Cap		4A5432-01	2							
13	Strike Plate for Doors with Locks	<b>-01 and -W01</b>	4A5493-01	1	1						
13a	T2 Screw	<b>-01 and -W01</b> 4x8, SS	7P32-0408	2	2						

## E. Drawer

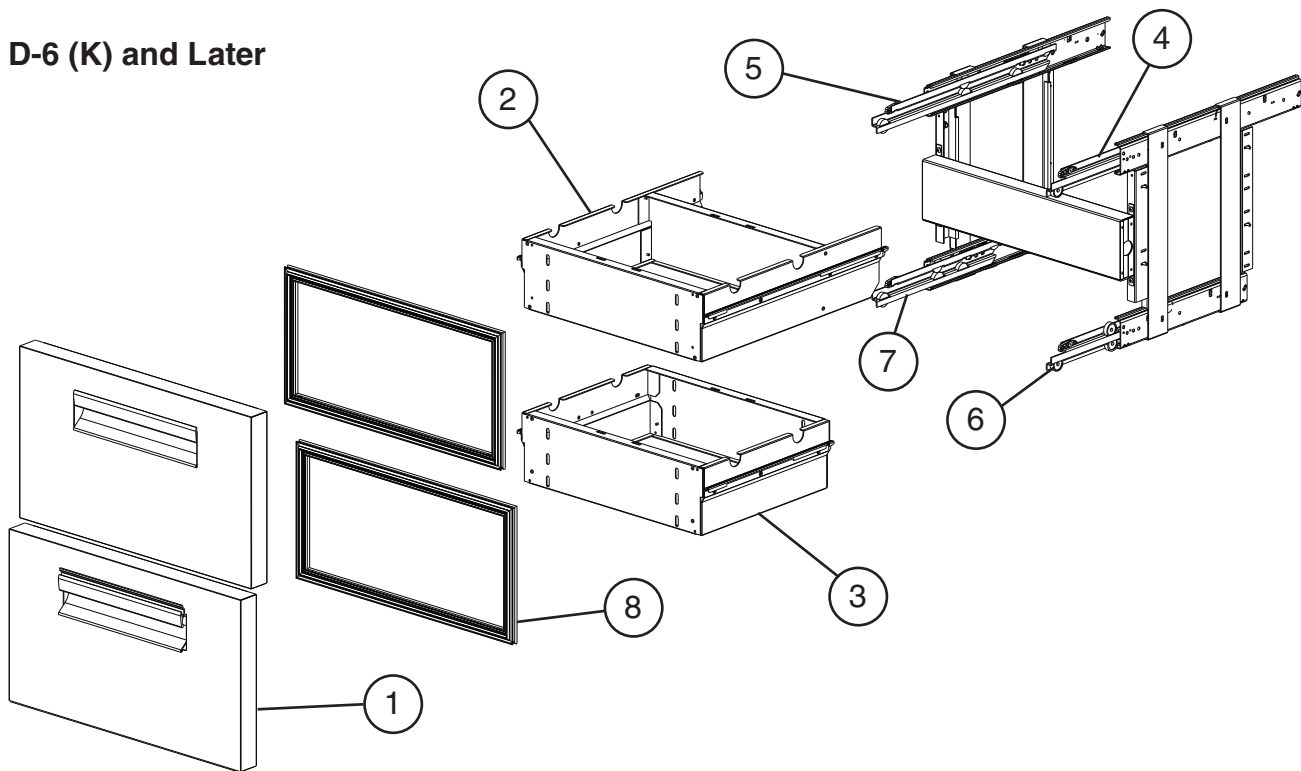
### Undercounter, Worktop, Prep Table (-D)(-D4)(-D6)

A-5 to F-6

#### D-6 (J) and Earlier



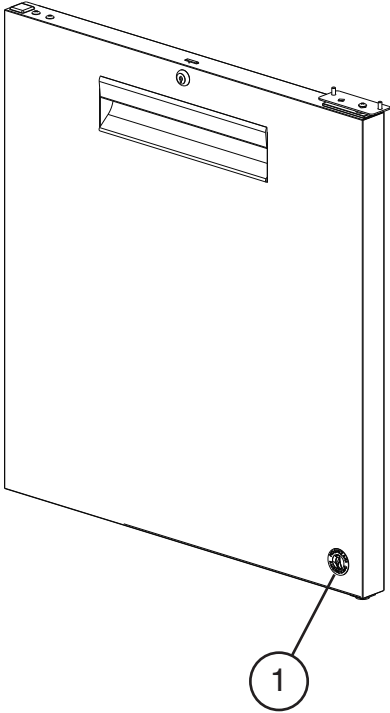
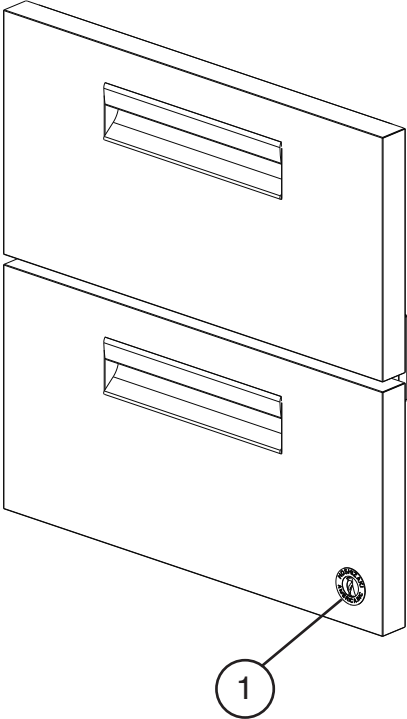
#### D-6 (K) and Later





Title: E. Drawer Models: Undercounter, Worktop, Prep Table											
Index No.	Description	Material or Model Number	Part Number	Required Number							
				A-5 to D-6 (J)	D-6 (K) to F-6						
1	Drawer Face	CRM_27-D (All)	2A7510G01	2	2						
		CRM_48-D (All) CRM_72-D (All)	2A7511G01	2	2						
		CRM_60-D (All)	2A7512G01	2	2						
2	Upper Drawer Box	CRM_27-D (All)	3A8185G01	1	-						
			3A8748G01		1						
		CRM_48-D (All) CRM_72-D (All)	3A8191G01	1	-						
			3A8747G01		1						
		CRM_60-D (All)	3A8294G01	1	-						
			3A8718G01		1						
3	Lower Drawer Box	CRM_27-D (All)	3A8185G01	1	1						
		CRM_48-D (All) CRM_72-D (All)	3A8191G01	1	1						
		CRM_60-D (All)	3A8294G01	1	1						
4	Upper Right Slide Roller		4A5663-02	1	-						
			4A5772-02		1						
5	Upper Left Slide Roller		4A5664-02	1	-						
			4A5773-02		1						
6	Lower Right Slide Roller		4A5663-02	1	1						
7	Lower Left Slide Roller		4A5664-02	1	1						
8	Gasket	CRM_27-D (All)	2A5192-15	2	2						
		CRM_48-D (All) CRM_72-D (All)	2A5192-17	2	2						
		CRM_60-D (All)	2A5192-16	2	2						

**F. Accessories & Labels**  
**Undercounter, Worktop, Prep Table**  
A-5 to F-6



<b>Title: F. Accessories &amp; Labels    Models: Undercounter, Worktop, Prep Table</b>											
Index No.	Description	Material or Model Number	Part Number	Required Number							
				A-5 to D-6 (F)	D-6 (G) to F-6						
1	Penguin Label		456246-02	1	1						
2	4" Caster Kit (includes items 3 and 4)	<b>HS-5035 Undercounter</b>	4A5434A01	1	1						
	2" Caster Kit (includes items 3, 4, and 4a)	<b>HS-5037 Undercounter Low Profile</b>	4A5436A01	1	1						
	6" Caster Kit (includes items 3 and 4)	<b>HS-5036 Worktop Prep Table</b>	4A5435A01	1	1						
3	4" Non-Locking Caster	<b>Undercounter</b>	4A5427-01	2	2						
	2" Non-Locking Caster	<b>Undercounter Low Profile</b>	4A5429-01	2	2						
	6" Non-Locking Caster	<b>Worktop Prep Table</b>	4A5428-01	2	2						
4	4" Locking Caster	<b>Undercounter</b>	4A5427-02	2	2						
	2" Locking Caster	<b>Undercounter Low Profile</b>	4A5429-02	2	2						
	6" Locking Caster	<b>Worktop Prep Table</b>	4A5428-02	2	2						
4a	Wrench	<b>Undercounter Low Profile</b>	4A5492-01	1	1						
<b>Prep Table Specific Parts</b>											
5	1/6 Size Pan, 4" Depth	<b>-8</b>	1000000344	8	8						
		<b>-12 and -12M</b>		12	12						
		<b>-18 and -18M</b>		18	18						
		<b>-24M</b>		24	24						
		<b>-30M</b>		30	30						
6	Cutting Board	<b>CRMR27-8</b>	3A4894-09	1	1						
		<b>CRMR27-12M</b>	3A4894-07	1	-						
			3A4894-09		1						
		<b>CRMR48-8 CRMR48-12</b>	3A4894-10	1	1						
			<b>CRMR48-12M CRMR48-18M</b>	3A4894-10	1	1					
		<b>CRMR60-8 CRMR60-12 CRMR60-16</b>	3A4894-11	1	1						
			<b>CRMR60-12M CRMR60-18M CRMR60-24M</b>	3A4894-11	1	-					
				3A4894-13		1					
		<b>CRMR72-12 CRMR72-16 CRMR72-18</b>	3A4894-14	1	1						
<b>CRMR72-18M CRMR72-24M CRMR72-30M</b>			1	1							