

# Hoshizaki America, Inc.

## Commercial Series Refrigerated Kitchen Equipment

### Models

Undercounter, Worktop, Prep Table  
CRM\_27, CRM\_48, CRM\_60, CRM\_72



“A Superior Degree  
of Reliability”

[www.hoshizaki.com](http://www.hoshizaki.com)

## PARTS LIST



Number: 71335  
Issued: 8-19-2011  
Revised: 11-20-2014

## CONTENTS

Auxiliary Codes.....	3
Model Codes .....	7
A. Main Assembly .....	8
CRMR27 and CRMF27 Undercounter, Worktop, and Prep Table .....	8
CRMR48 and CRMF48 Undercounter, Worktop, and Prep Table .....	11
CRMR60 and CRMF60 Undercounter, Worktop, and Prep Table .....	14
CRMR72 Undercounter, Worktop, and Prep Table .....	17
B. Refrigeration Circuit.....	20
CRMR27 Undercounter, Worktop, and Prep Table .....	20
CRMF27 Undercounter and Worktop .....	22
CRMR48 Undercounter, Worktop, and Prep Table .....	24
CRMF48 Undercounter and Worktop .....	26
CRMR60 Undercounter, Worktop, and Prep Table .....	28
CRMF60 Undercounter and Worktop .....	30
CRMR72 Undercounter, Worktop, Prep Table .....	32
C. Door-Right Hinged.....	34
D. Door-Left Hinged .....	36
E. Drawer .....	38
F. Accessories & Labels .....	39

## Auxiliary Codes

# 27

### Refrigerator

<b>CRMR27</b>	A-5	July 2011
	B-5	January 2012
	C-5	January 2013
	C-6	June 2013
	C-7	September 2013
	C-8	December 2013
	D-5	January 2014
	D-6	June 2014
	D-7	July 2014
<b>CRMR27-D</b>	C-5	December 2013
	C-5	February 2014
	D-5	February 2014
	D-6	August 2014
<b>CRMR-LP</b>	D-5	January 2014
	D-6	June 2014
	D-7	October 2014
<b>CRMR27-01</b>	C-7	September 2013
	D-5	April 2014
	D-6	June 2014
	D-7	September 2014
<b>CRMR27-W</b>	A-5	December 2011
	B-5	January 2012
	C-5	January 2013
	D-5	May 2014
	D-6	October 2014
<b>CRMR27-WD</b>	D-5	February 2014
	D-6	July 2014
<b>CRMR27-W01</b>	B-5	August 2012
	D-6	July 2014
<b>CRMR27-8</b>	B-5	March 2012
	C-5	January 2013
	C-6	June 2013
	C-7	December 2013
	D-5	January 2014
	D-6	June 2014
	D-7	July 2014
	D-8	September 2014

<b>CRMR27-8D</b>	D-5	April 2014
	D-6	July 2014
	D-8	September 2014

<b>CRMR27-12M</b>	B-5	February 2012
	C-5	January 2013
	C-6	May 2013
	C-7	November 2013
	D-5	February 2014
	D-6	June 2014
	D-8	September 2014

<b>CRMR27-12MD</b>	D-5	February 2014
	D-6	June 2014
	D-8	September 2014

### Freezer

<b>CRMF27</b>	A-5	July 2011
	B-5	January 2012
	C-5	January 2013
	C-6	June 2013
	C-7	November 2013
	D-5	January 2014
	D-6	May 2014
	D-7	October 2014

<b>CRMF27-D</b>	D-5	May 2014
	D-7	August 2014

<b>CRMF27-LP</b>	D-5	January 2014
	D-7	June 2014

<b>CRMF27-01</b>	C-5	October 2013
	D-5	April 2014
	D-6	May 2014
	D-7	September 2014

<b>CRMF27-W</b>	A-5	December 2011
	B-5	January 2012
	C-5	January 2013
	C-6	June 2013
	C-7	December 2013
	D-5	January 2014
	D-6	May 2014
	D-7	June 2014

<b>CRMF27-WD</b>	D-5	May 2014
	D-7	October 2014

## Auxiliary Codes, continued

# 48

### Refrigerator

<b>CRMR48</b>	A-5	August 2011
	B-5	January 2012
	C-5	January 2013
	C-6	June 2013
	D-5	January 2014
	D-6	October 2014
<b>CRMR48-D4</b>	D-5	March 2014
	D-6	September 2014
<b>CRMR48-01</b>	B-5	August 2012
	D-5	April 2014
	D-6	June 2014
<b>CRMR48-W</b>	A-5	December 2011
	B-5	February 2012
	C-5	January 2013
	C-6	June 2013
	C-7	September 2013
	C-8	December 2013
	D-5	February 2014
	D-6	June 2014
<b>CRMR48-WD4</b>	D-5	March 2014
	D-6	June 2014
<b>CRMR48-W01</b>	C-5	February 2013
	D-6	June 2014
<b>CRMR48-8</b>	B-5	March 2012
	C-5	February 2013
	C-6	June 2013
	C-7	November 2013
	D-5	May 2014
	D-7	August 2014
	D-8	October 2014
<b>CRMR48-12</b>	B-5	March 2012
	C-5	January 2013
	C-6	May 2013
	C-7	October 2013
	D-5	January 2014
	D-6	June 2014
	D-7	July 2014
	D-8	September 2014

<b>CRMR48-12M</b>	B-5	March 2012
	C-5	February 2013
	C-6	June 2013
	C-7	November 2013
	D-7	August 2014
	D-8	September 2014

<b>CRMR48-12D4</b>	D-5	April 2014
	D-7	August 2014
	D-8	October 2014

<b>CRMR48-18M</b>	B-5	February 2012
	C-5	January 2013
	C-6	May 2013
	C-7	November 2013
	D-5	January 2014
	D-6	July 2014
	D-7	August 2014
	D-8	October 2014

### Freezer

<b>CRMF48</b>	A-5	August 2011
	B-5	January 2012
	B-6	July 2012
	C-5	January 2013
	C-6	June 2013
	C-7	September 2013
	C-8	November 2013
	D-5	January 2014
	D-6	February 2014
	D-7	July 2014
	D-8	October 2014

<b>CRMF48-W</b>	A-5	December 2011
	B-5	February 2012
	B-6	July 2012
	C-5	March 2013
	C-6	June 2013
	C-7	November 2013
	D-5	January 2014
	D-6	March 2014
	D-7	July 2014
	D-8	October 2014

## Auxiliary Codes, continued

### **60**

#### **Refrigerator**

<b>CRMR60</b>	B-5 August 2012	<b>CRMR60-16</b>	C-5 February 2013
	C-5 January 2013		C-6 May 2013
	C-6 July 2013		C-7 September 2013
	D-5 January 2014		D-6 May 2014
	D-6 June 2014		D-7 July 2014
	D-7 July 2014		D-8 August 2014
	D-9 September 2014		D-9 September 2014
<b>CRMR60-W</b>	B-5 August 2012	<b>CRMR60-18M</b>	C-5 March 2013
	C-5 January 2013		C-6 May 2013
	C-6 October 2013		C-7 September 2013
	C-7 November 2013		C-8 November 2013
	D-5 January 2014		D-6 May 2014
	D-7 July 2014		D-9 September 2014
	D-9 September 2014	<b>CRMR60-24M</b>	C-5 February 2013
<b>CRMR60-8</b>	C-5 May 2013		C-6 May 2013
	C-6 July 2013		C-7 July 2013
	C-7 September 2013		C-8 November 2013
	D-5 February 2014		D-5 January 2014
<b>CRMR60-12</b>	C-5 April 2013		D-6 February 2014
	C-6 June 2013		D-7 July 2014
	D-6 May 2014		D-8 August 2014
	D-7 July 2014		D-9 September 2014
	D-8 August 2014		
	D-9 September 2014	<b>CRMF60</b>	<b><u>Freezer</u></b>
<b>CRMR60-12M</b>	C-5 March 2013		C-5 January 2013
	C-6 May 2013		C-6 September 2013
	C-7 September 2013		C-7 November 2013
			D-6 March 2014
			D-8 September 2014
		<b>CRMF60-W</b>	C-5 February 2013
			C-6 September 2013
			C-7 November 2013
			D-5 January 2014
			D-6 April 2014
			D-7 July 2014

## Auxiliary Codes, continued

# 72

### Refrigerator

<b>CRMR72</b>	B-5 July 2012	<b>CRMR72-18M</b>	C-5 May 2013
	C-5 January 2013		C-6 July 2013
	C-6 June 2013		C-7 October 2013
	C-7 January 2013		C-8 November 2013
	D-5 April 2014		D-6 February 2014
	D-6 June 2014		D-7 July 2014
	D-7 July 2014		D-8 August 2014
<b>CRMR72-W</b>	B-5 August 2012	<b>CRMR72-24M</b>	C-5 May 2013
	C-5 January 2013		C-6 August 2013
	C-6 June 2013		C-7 October 2013
	D-5 February 2014		D-8 August 2014
	D-6 June 2014	<b>CRMR72-30M</b>	C-5 January 2013
	D-7 August 2014		C-6 May 2013
<b>CRMR72-12</b>	C-5 April 2013		C-7 July 2013
	C-6 June 2013		C-8 November 2013
	C-7 September 2013		D-5 January 2014
	D-8 August 2014		D-6 February 2014
	D-9 October 2014		D-7 July 2014
			D-8 August 2014
<b>CRMR72-16</b>	C-5 April 2013		
	C-6 June 2013		
	C-7 September 2013		
<b>CRMR72-18</b>	C-5 February 2013		
	C-6 July 2013		
	C-7 September 2013		
	C-8 November 2013		
	D-6 February 2014		
	D-7 July 2014		
	D-8 August 2014		
	D-9 September 2014		

## **Model Codes**

The model number code breakdown is as follows: CRMR\_\_ and CRMF\_\_

C – Commercial Series

RM – Rear Mount

R – Refrigerator

F – Freezer

27, 48, 60, and 72 – width

After Dash (-) Nomenclature:

-01 – Locks

-W – Worktop

-D, -D4, -D6 – Drawers

-8, -12, -16, -18, -24, -30 – Prep Table Number of Pans

-8M, -12M, -16M, -18M, -24M, -30M – Mega Top Number of Pans

-LP – Low Profile Casters

## **Auxiliary Code Breakdown**

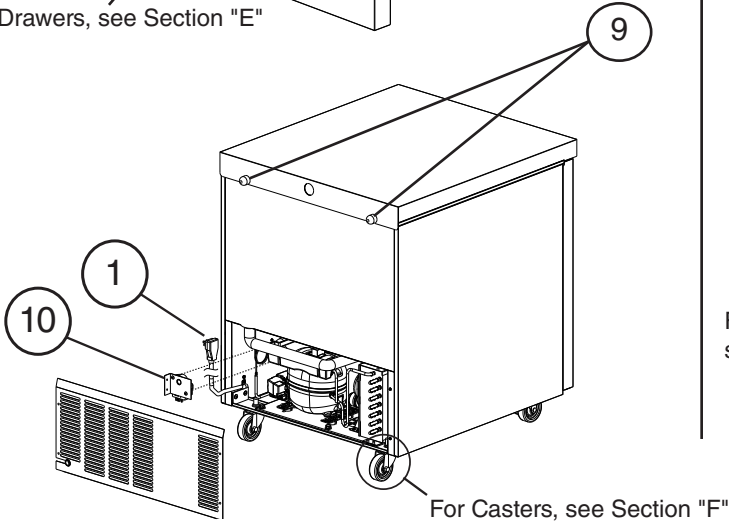
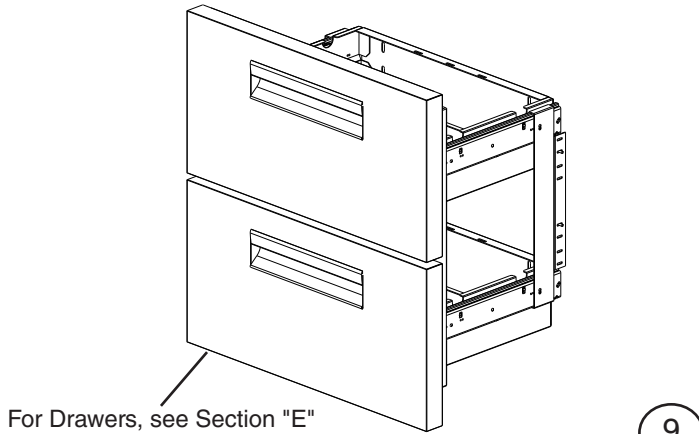
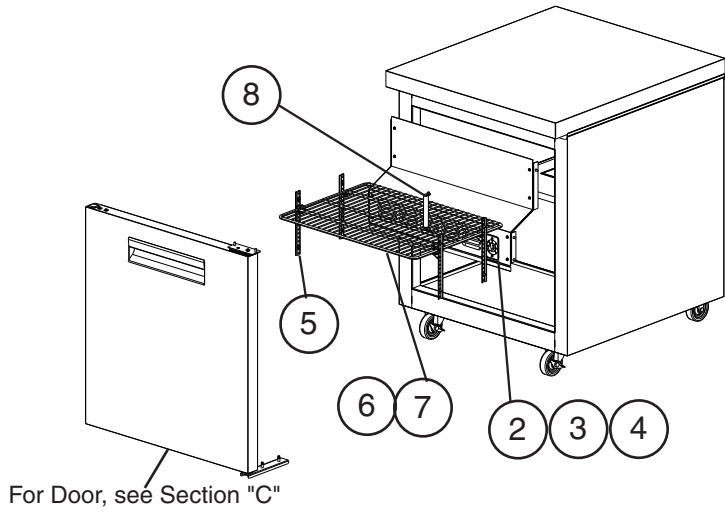
The auxiliary code is the first two characters in the serial number. The first character indicates the year. Years progress or regress in alphabetical order. The series runs from "A" through "V" and the letters "I" and "O" are skipped. The second character indicates significant part changes within a year. Base is "5" and this number advances for each change. In cases where there is a letter in parentheses, this designates the month. This is the last character in the serial number. The series runs from "(A)" through "(M)" and the letter "(I)" is skipped. This designation is only included when identifying a parts change within an auxiliary code.

## **Note About Ordering Parts**

Most assemblies cannot be ordered as complete units; parts in the assemblies generally must be ordered separately.

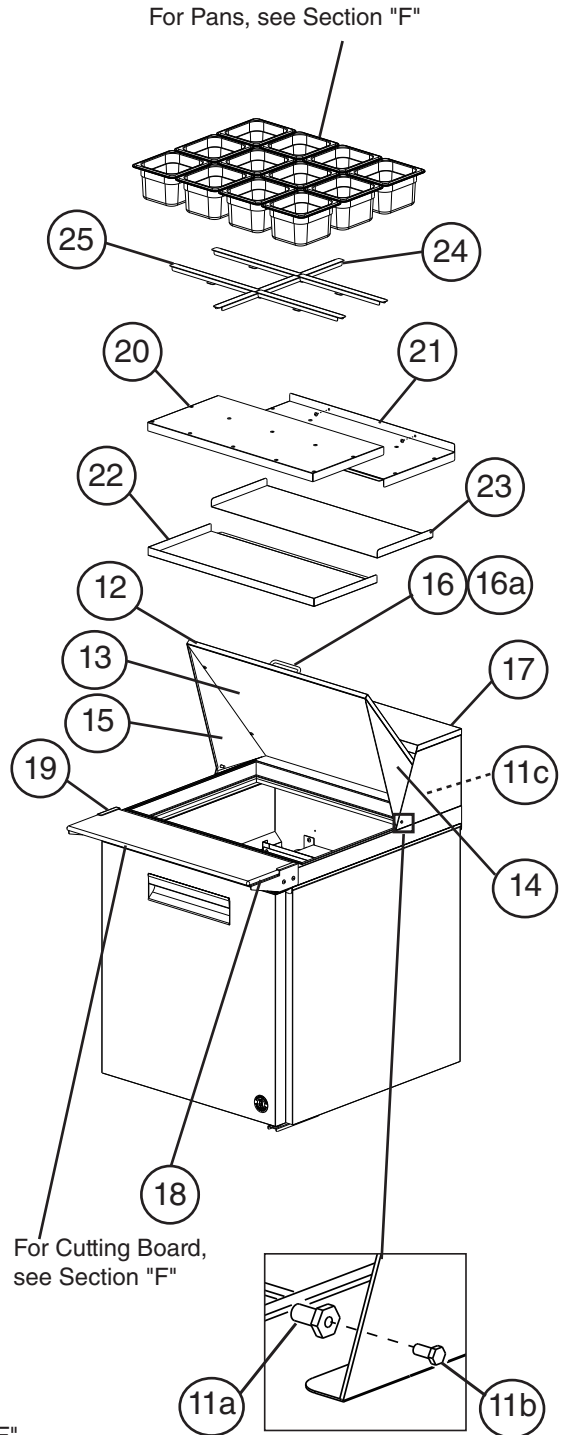
**A. Main Assembly**  
**CRMR27 and CRMF27 Undercounter, Worktop, and Prep Table**  
 A-5 to D-8

**Undercounter, Worktop, Prep Table**  
**Common Parts**



**Model Shown: CRMF27**

**Prep Table**  
**Specific Parts**



**Model Shown: CRMR27-12M**



<b>Title: A. Main Assembly Models: CRMR27 and CRMF27 Undercounter, Worktop, and Prep Table</b>											
Index No.	Description	Material or Model Number	Part Number	Required Number							
				A-5 to C-5 (C)	C-5 (D) to D-5	D-6	D-7	D-8			
<b>Common Parts</b>											
1	Power Cord		4A2860-01	1	1	1	1				
2	Cabinet Thermostat	<b>Refrigerator</b>	3A6755-01	1	1	1	1				
		<b>Freezer</b>	3A6755-02	1	1	1	1				
3	Dial Plate		3A6787-01	1	1	1	1				
4	Dial Knob		3A6788-01	1	1	1	1				
5	Pilaster		4A5417-01	4	-						
			4A5524-01		4	-					
			4A5719-01				4	4			
6	Shelf		3A2830-07	1	1	1	1				
7	Shelf Clip		4A5418-01	4	4	4	4				
8	Cabinet Thermometer		461083-01	1	1	1	1				
9	Bumpers		3A6696-01	2	2	2	2				
10	Defrost Timer	<b>Freezer, Prep Table</b>	3A7925-01	1	1	1	1				
<b>Prep Table Specific Parts</b>											
11	Rail Cover Assembly (includes items 11a through 16a)	<b>-8</b>	3A7326A01	1	1	1	1				
		<b>-12M</b>	3A7328A01	1	1	1	1				
11a	Pivot Pin		4A4768-01	2	2	2	2				
11b	Pivot Bolt		4A4769-01	2	2	2	2				
11c	Tree Clip		4A0579-01	2	2	2	2				
12	Top Panel	<b>-8</b>	1A3475-01	D-6 and earlier models must order Rail Cover Assembly				1			
		<b>-12M</b>	1A3413-01					1			
13	Interior Panel	<b>-8</b>	1A3476-01					1			
		<b>-12M</b>	1A3414-01					1			
14	Right Side Panel	<b>-8</b>	1A3605-01					1			
		<b>-12M</b>	1A3604-01					1			
15	Left Side Panel	<b>-8</b>	1A3605-02					1			
		<b>-12M</b>	1A3604-02					1			
16	Rail Handle		1A3416-01	1	1	1	1				
16a	Pan Head Screw		7C1211412	2	2	2	2				
17	Rail Hood		3A7325A01	1	1	1	1				
18	Right Cutting Board Bracket	<b>-8</b>	4A5496-01	1	1	1	1				
		<b>-12M</b>	1000000393	1	1	1	1				
19	Left Cutting Board Bracket	<b>-8</b>	4A5496-02	1	1	1	1				
		<b>-12M</b>	1000000392	1	1	1	1				

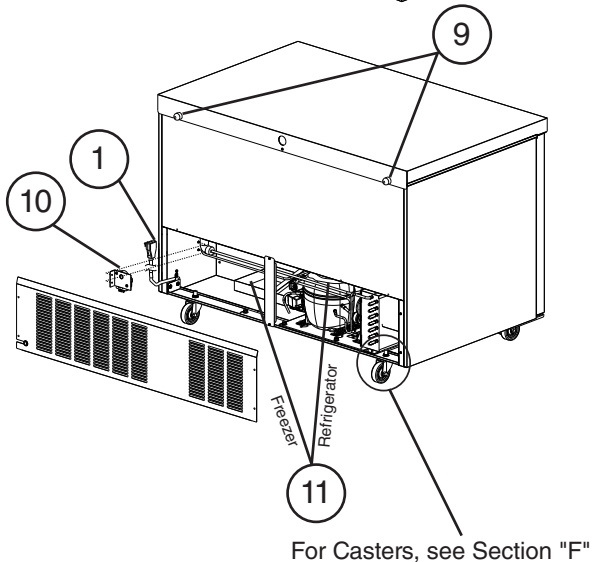
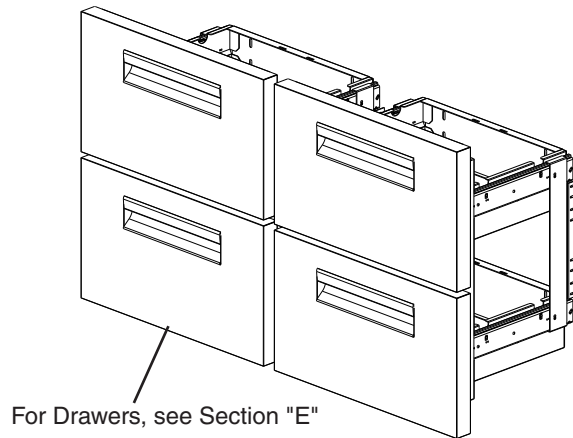
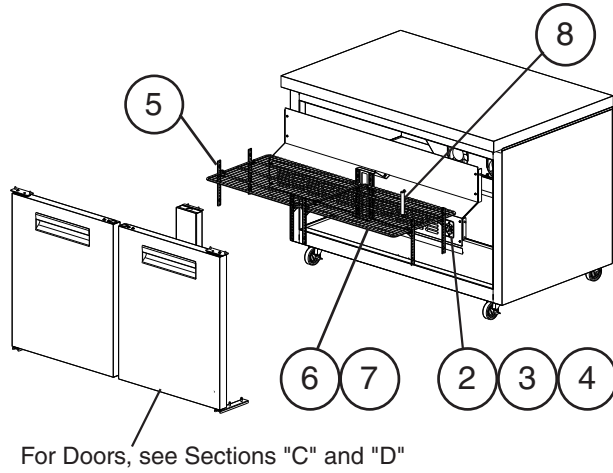
Title: A. Main Assembly    Models: CRMR27 and CRMF27 Undercounter, Worktop, and Prep Table												
Index No.	Description	Material or Model Number	Part Number	Required Number								
				A-5 to C-5 (C)	C-5 (D) to D-5	D-6	D-7 D-8					
20	Upper Front Air Distribution Table Panel	<b>-8, -12M</b>	2A6920-01	1	1	-						
21	Upper Rear Air Distribution Table Panel		2A6919-01	1	1	-						
22	Lower Front Air Distribution Table Panel		2A6922-01	1	1	-						
23	Lower Rear Air Distribution Table Panel		2A6921-01	1	1	-						
24	Rail Divider (runs front-to-back)	<b>-8</b>	1000000336	1	1	1	1					
		<b>-12M</b>	1000000343	1	1	1	1					
25	Rail Divider (runs side-to-side)	<b>-8</b>	1000000342	2	2	2	2					
		<b>-12M</b>		4	4	4	4					

# A. Main Assembly

## CRMR48 and CRMF48 Undercounter, Worktop, and Prep Table

A-5 to D-8

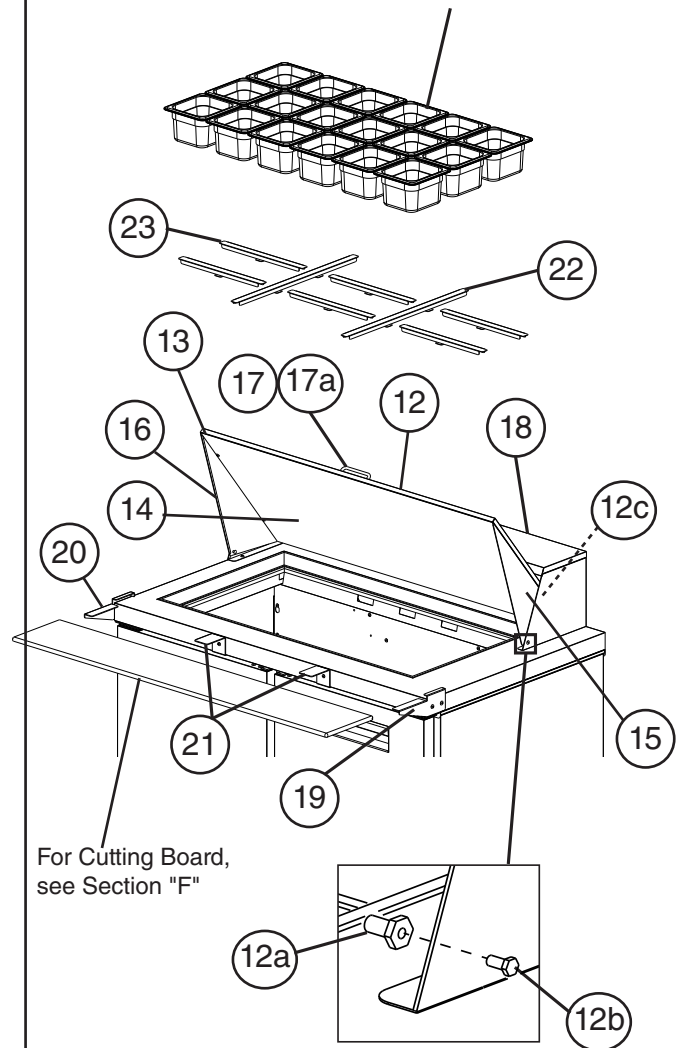
### Undercounter, Worktop, Prep Table Common Parts



Model Shown: CRMF48

### Prep Table Specific Parts

For Pans, see Section "F"



Model Shown: CRMR48-18M

Title: A. Main Assembly Models: CRMR48 and CRMF48 Undercounter, Worktop, and Prep Table													
Index No.	Description	Material or Model Number	Part Number	Required Number									
				A-5 to D-5	D-6	D-7 D-8							
<b>Common Parts</b>													
1	Power Cord		4A2860-01	1	1	1							
2	Cabinet Thermostat	<b>Refrigerator</b>	3A6755-01	1	1	1							
		<b>Freezer</b>	3A6755-02	1	1	1							
3	Dial Plate		3A6787-01	1	1	1							
4	Dial Knob		3A6788-01	1	1	1							
5	Pilaster		4A5417-01	8	8	8							
6	Shelf		3A2830-08	2	2	2							
7	Shelf Clip		4A5418-01	8	8	8							
8	Cabinet Thermometer		461083-01	1	1	1							
9	Bumpers		3A6696-01	2	2	2							
10	Defrost Timer	<b>Freezer, Prep Table</b>	3A7925-01	1	1	1							
11	Condensate Pan	<b>Refrigerator</b>	3A6758-01	1	1	1							
		<b>Freezer</b>	2A7170-03	1	-								
			1A3373-01		1	1							
11a	Right Condensate Pan Bracket	<b>Freezer</b>	2A7243-01	1	-								
			1A3374-01		1	1							
11b	Left Condensate Pan Bracket	<b>Freezer</b>	2A7243-02	1	-								
			1A3374-02		1	1							
<b>Prep Table Specific Parts</b>													
12	Rail Cover Assembly (includes items 12a through 17a)	<b>-8</b>	3A7330A01	1	1	1							
		<b>-12, -12D4</b>	3A7331A01	1	1	1							
		<b>-12M</b>	3A7332A01	1	1	1							
		<b>-18M</b>	3A7333A01	1	1	1							
12a	Pivot Pin		4A4768-01	2	2	2							
12b	Pivot Bolt		4A4769-01	2	2	2							
12c	Tree Clip		4A0579-01	2	2	2							
13	Top Panel	<b>-8</b>	1A3475-01	D-6 and earlier models must order Rail Cover Assembly	1								
		<b>-12, -12D4</b>	1A3475-03		1								
		<b>-12M</b>	1A3413-02		1								
		<b>-18M</b>	1A3413-03		1								
14	Interior Panel	<b>-8</b>	1A3476-02		1								
		<b>-12, -12D4</b>	1A3476-03		1								
		<b>-12M</b>	1A3414-02		1								
		<b>-18M</b>	1A3414-03		1								
15	Right Side Panel	<b>-8, -12, -12D4</b>	1A3605-01	1									
		<b>-12M, -18M</b>	1A3604-01	1									
16	Left Side Panel	<b>-8, -12, -12D4</b>	1A3605-02	1									
		<b>-12M, -18M</b>	1A3604-02	1									
17	Rail Handle		1A3416-01	1	1	1							
17a	Pan Head Screw		7C12I1412	2	2	2							
18	Rail Hood	<b>-8, -12M</b>	3A7327A01	1	1	1							
		<b>-12, -12D4, -18M</b>	3A7329A01	1	1	1							

<b>Title: A. Main Assembly    Models: CRMR48 and CRMF48 Undercounter, Worktop, and Prep Table</b>											
Index No.	Description	Material or Model Number	Part Number	Required Number							
				A-5 to D-5	D-6	D-7 D-8					
19	Right Cutting Board Bracket	<b>-8, -12, -12D4</b>	4A5496-01	1	1	1					
		<b>-12M, -18M</b>	1000000393	1	1	1					
20	Left Cutting Board Bracket	<b>-8, -12, -12D4</b>	4A5496-02	1	1	1					
		<b>-12M, -18M</b>	1000000392	1	1	1					
21	Center Cutting Board Bracket	<b>-12M, -18M</b>	1000000394	2	2	2					
22	Rail Divider (runs front-to-back)	<b>-8</b>	1000000342	1	1	1					
		<b>-12, -12D4</b>		2	2	2					
		<b>-12M</b>	1000000343	1	1	1					
		<b>-18M</b>		2	2	2					
23	Rail Divider (runs side-to-side)	<b>-8</b>	1000000336	2	2	2					
		<b>-12, -12D4</b>		3	3	3					
		<b>-12M</b>	1000000342	4	4	4					
		<b>-18M</b>		6	6	6					

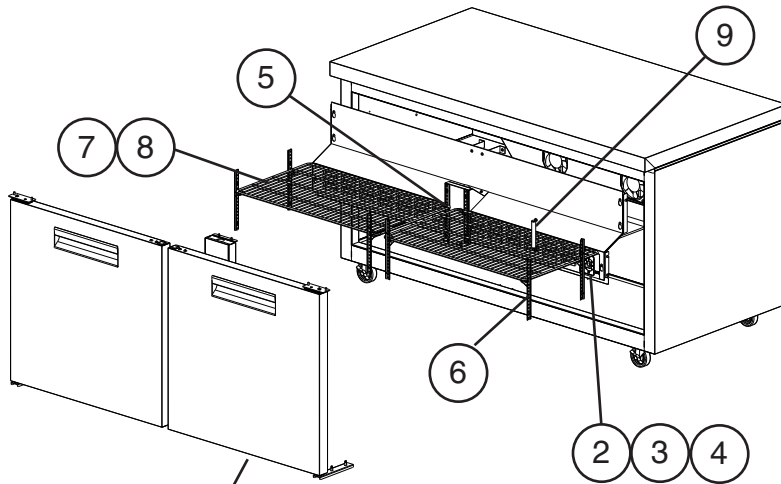
# A. Main Assembly

## CRMR60 and CRMF60 Undercounter, Worktop, and Prep Table

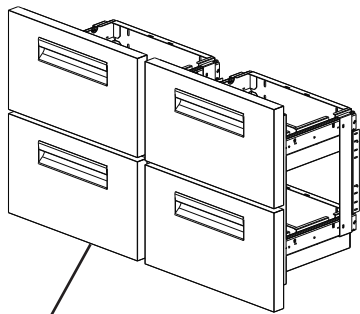
B-5 to D-9

### Undercounter, Worktop, Prep Table

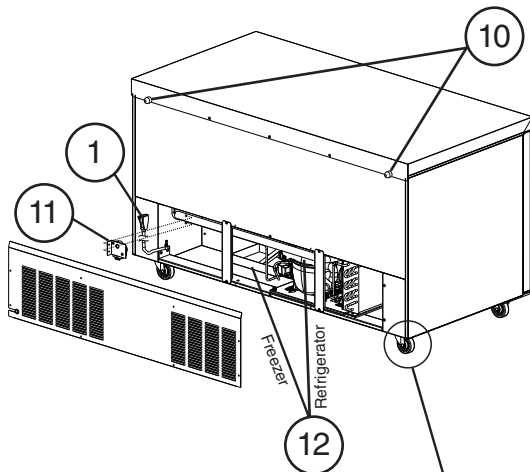
#### Common Parts



For Doors, see Sections "C" and "D"



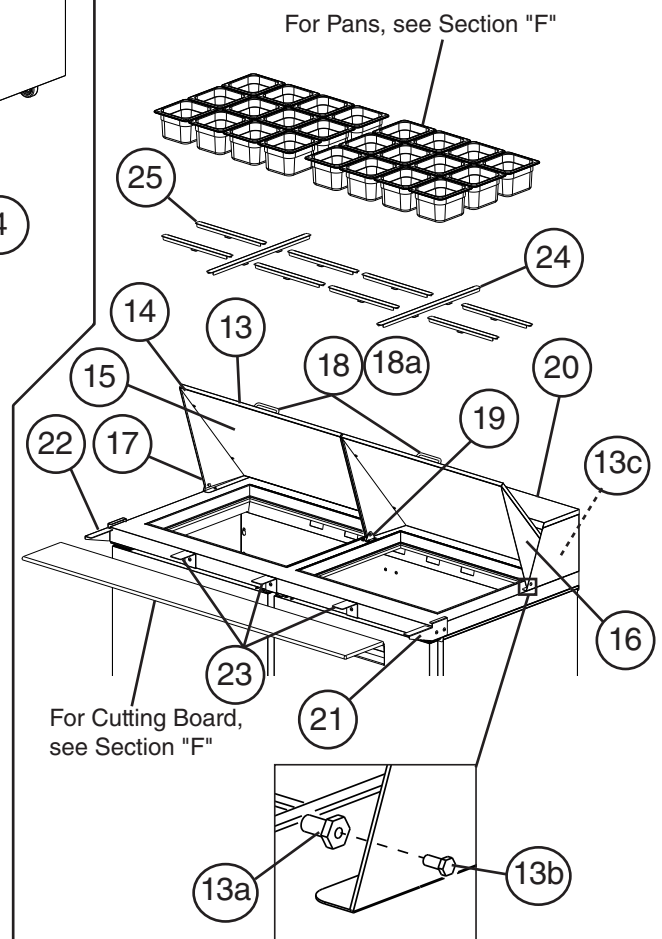
For Drawers, see Section "E"



For Casters, see Section "F"

**Model Shown: CRMF60**

#### Prep Table Specific Parts



**Model Shown: CRMR60-24M**

<b>Title: A. Main Assembly Models: CRMR60 and CRMF60 Undercounter, Worktop, and Prep Table</b>												
Index No.	Description	Material or Model Number	Part Number	Required Number								
				B-5 to D-5	D-6	D-7 to D-9						
<b>Common Parts</b>												
1	Power Cord		4A2860-01	1	1	1						
2	Cabinet Thermostat	<b>Refrigerator</b>	3A6755-03	1	1	1						
		<b>Freezer</b>	3A6755-04	1	1	1						
3	Dial Plate		3A6787-01	1	1	1						
4	Dial Knob		3A6788-01	1	1	1						
5	Rear Pilaster		4A5417-01	2	2	2						
6	Side and Front Pilaster		4A5524-01	6	6	6						
7	Shelf		3A2830-09	2	2	2						
8	Shelf Clip		4A5418-01	8	8	8						
9	Cabinet Thermometer		461083-01	1	1	1						
10	Bumpers		3A6696-01	2	2	2						
11	Defrost Timer	<b>Freezer, Prep Table</b>	3A7925-01	1	1	1						
12	Condensate Pan	<b>Refrigerator</b>	3A6758-01	1	1	1						
		<b>Freezer</b>	2A7170-03	1	-							
			1A3373-01		1	1						
12a	Right Condensate Pan Bracket	<b>Freezer</b>	2A7243-01	1	-							
			1A3374-01		1	1						
12b	Left Condensate Bracket	<b>Freezer</b>	2A7243-02	1	-							
			1A3374-02		1	1						
<b>Prep Table Specific Parts</b>												
13	Rail Cover Assembly (includes items 13a through 19)	<b>-8</b>	3A7330A01	1	1	1						
		<b>-12</b>	3A7331A01	1	1	1						
		<b>-12M</b>	3A7332A01	1	1	1						
		<b>-16</b>	3A7346A01	1	1	1						
		<b>-18M</b>	3A7333A01	1	1	1						
		<b>-24M</b>	3A7348A01	2	2	2						
13a	Pivot Pin	<b>-8, -12, -12M, -16, -18M</b>	4A4768-01	2	2	2						
		<b>-24M</b>		4	4	4						
13b	Pivot Bolt	<b>-8, -12, -12M, -16, -18M</b>	4A4769-01	2	2	2						
		<b>-24M</b>		4	4	4						
13c	Tree Clip	<b>-8, -12, -12M, -16, -18M</b>	4A0579-01	2	2	2						
		<b>-24M</b>		4	4	4						
14	Top Panel	<b>-8</b>	1A3475-02	D-6 and earlier models must order Rail Cover Assembly	1							
		<b>-12</b>	1A3475-03		1							
		<b>-12M</b>	1A3413-02		1							
		<b>-16</b>	1A3475-04		1							
		<b>-18M</b>	1A3413-03		1							
		<b>-24M</b>	1A3413-04		1							

Title: A. Main Assembly    Models: CRMR60 and CRMF60 Undercounter, Worktop, and Prep Table													
Index No.	Description	Material or Model Number	Part Number	Required Number									
				B-5 to D-5	D-6	D-7 to D-9							
15	Interior Panel	-8	1A3476-02	D-6 and earlier models must order Rail Cover Assembly	1								
		-12	1A3476-03		1								
		-12M	1A3414-02		1								
		-16	1A3476-04		1								
		-18M	1A3414-03		1								
		-24M	1A3414-07		1								
16	Right Side Panel	-8, -12, -16	1A3605-01	1									
		-12M, -18M, -24M	1A3604-01	1									
17	Left Side Panel	-8, -12, -16	1A3605-02	1									
		-12M, -18M, -24M	1A3604-02	1									
18	Rail Handle	-8, -12, -12M, -16, -18M	1A3416-01	1	1	1							
		-24M		2	2	2							
18a	Pan Head Screw	-8, -12, -12M, -16, -18M	7C12I1412	2	2	2							
		-24M		4	4	4							
19	Rail Cover Bracket	-24M	4A5790-01	2	2	2							
20	Rail Hood	-8, -12M	3A7327A01	1	1	1							
		-12, -18M	3A7329A01	1	1	1							
		-16, -24M	3A7372A01	1	1	1							
21	Right Cutting Board Bracket	-8, -12, -16	4A5496-01	1	1	1							
		-12M, -18M, -24M	1000000393	1	1	1							
22	Left Cutting Board Bracket	-8, -12, -16	4A5496-02	1	1	1							
		-12M, -18M, -24M	1000000392	1	1	1							
23	Center Cutting Board Bracket	-12M, -18M, -24M	1000000394	3	3	3							
24	Rail Divider (runs front-to-back)	-8	1000000342	1	1	1							
		-12		2	2	2							
		-16		3	3	3							
		-12M	1000000343	1	1	1							
		-18M		2	2	2							
		-24M		2	2	2							
25	Rail Divider (runs side-to-side)	-8	1000000336	2	2	2							
		-12		3	3	3							
		-16		4	4	4							
		-12M	1000000342	4	4	4							
		-18M		6	6	6							
		-24M		8	8	8							



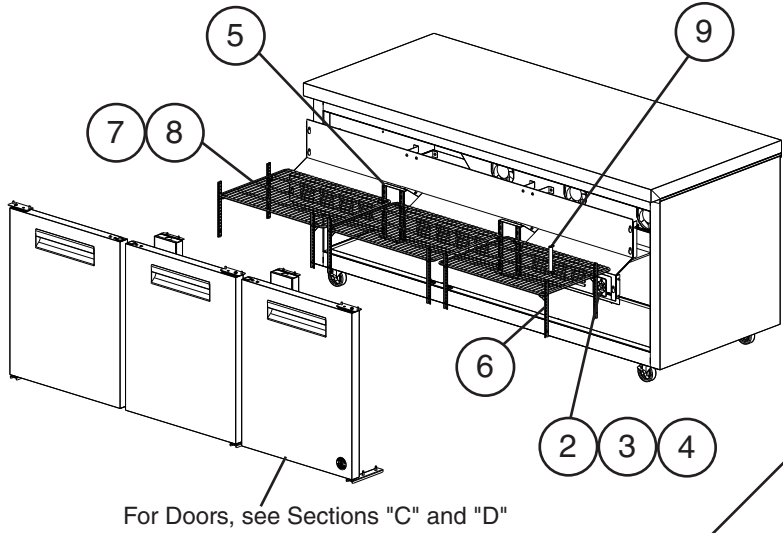
# A. Main Assembly

## CRMR72 Undercounter, Worktop, and Prep Table

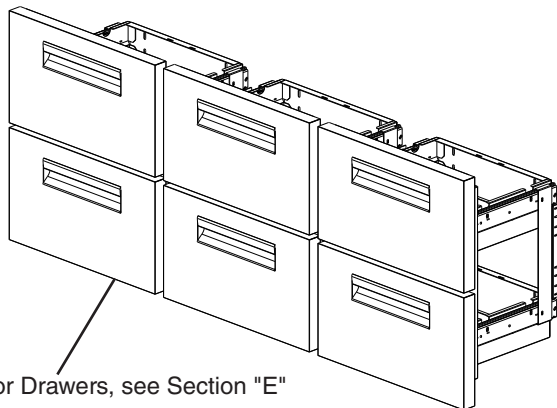
B-5 to D-9

### Undercounter, Worktop, Prep Table

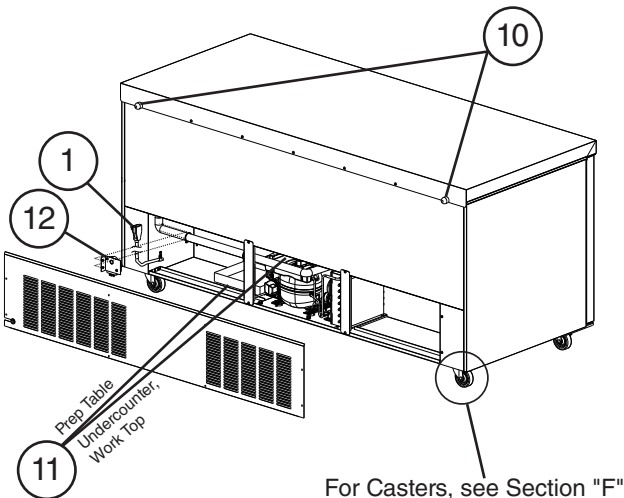
#### Common Parts



For Doors, see Sections "C" and "D"



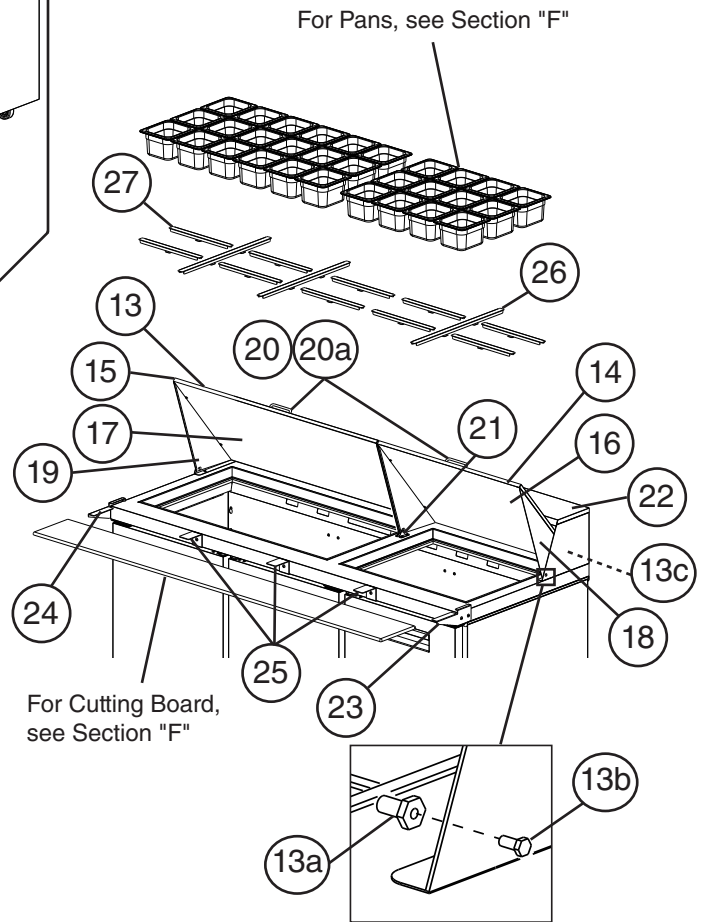
For Drawers, see Section "E"



For Casters, see Section "F"

Model Shown: CRMR72

#### Prep Table Specific Parts



For Pans, see Section "F"

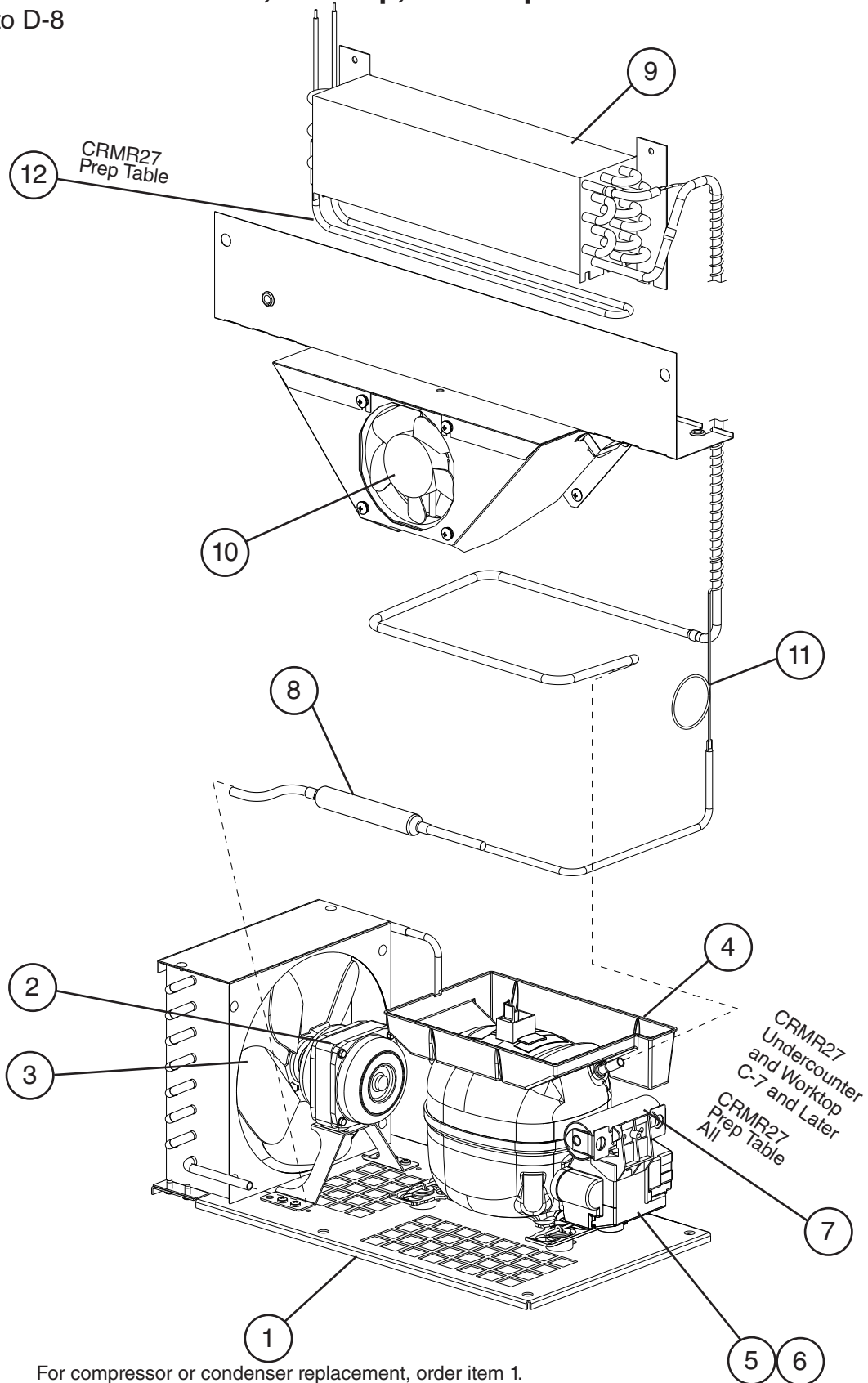
For Cutting Board, see Section "F"

Model Shown: CRMR72-30M

Title: A. Main Assembly Models: CRMR72 Undercounter, Worktop, and Prep Table												
Index No.	Description	Material or Model Number	Part Number	Required Number								
				B-5 to D-6	D-7	D-8 D-9						
<b>Common Parts</b>												
1	Power Cord		4A2860-01	1	1	1						
2	Cabinet Thermostat		3A6755-05	1	1	1						
3	Dial Plate		3A6787-01	1	1	1						
4	Dial Knob		3A6788-01	1	1	1						
5	Rear Pilaster		4A5417-01	4	4	4						
6	Side and Front Pilaster		4A5524-01	8	8	8						
7	Shelf		3A2830-07	3	3	3						
8	Shelf Clip		4A5418-01	12	12	12						
9	Cabinet Thermometer		461083-01	1	1	1						
10	Bumpers		3A6696-01	2	2	2						
11	Condensate Pan	<b>Undercounter, Worktop</b>	3A6758-01	1	1	1						
		<b>Prep Table</b>	2A7170-03	1	1	-						
			1A3373-01			1						
<b>Prep Table Specific Parts</b>												
12	Defrost Timer		3A7925-01	1	1	1						
13	Rail Cover (includes items 13a through 21)	<b>-12</b>	3A7331A01	1	1	1						
		<b>-16</b>	3A7346A01	1	1	1						
		<b>-18</b>	3A7378A01	1	1	1						
		<b>-18M</b>	3A7333A01	1	1	1						
		<b>-24M</b>	3A7348A01	1	1	1						
		<b>-30M</b>	3A7376A01	1	1	1						
13a	Pivot Pin	<b>-12, -16, -18M</b>	4A4768-01	2	2	2						
		<b>-24M, -30M</b>		4	4	4						
13b	Pivot Bolt	<b>-12, -16, -18M</b>	4A4769-01	2	2	2						
		<b>-24M, -30M</b>		4	4	4						
13c	Tree Clip	<b>-12, -16, -18M</b>	4A0579-01	2	2	2						
		<b>-24M, -30M</b>		4	4	4						
14	Top Panel	<b>-12</b>	1A3475-03	D-6 and earlier models must order Rail Cover Assembly	1	1						
		<b>-16</b>	1A3475-04		1	1						
		<b>-18</b>	1A3475-05		1	1						
		<b>-18M</b>	1A3413-03		1	1						
		<b>-24M</b>	1A3413-07		2	2						
	Top Panel Right	<b>-30M</b>	1A3413-08		1	1						
15	Top Panel Left	<b>-30M</b>	1A3413-09	1	1							

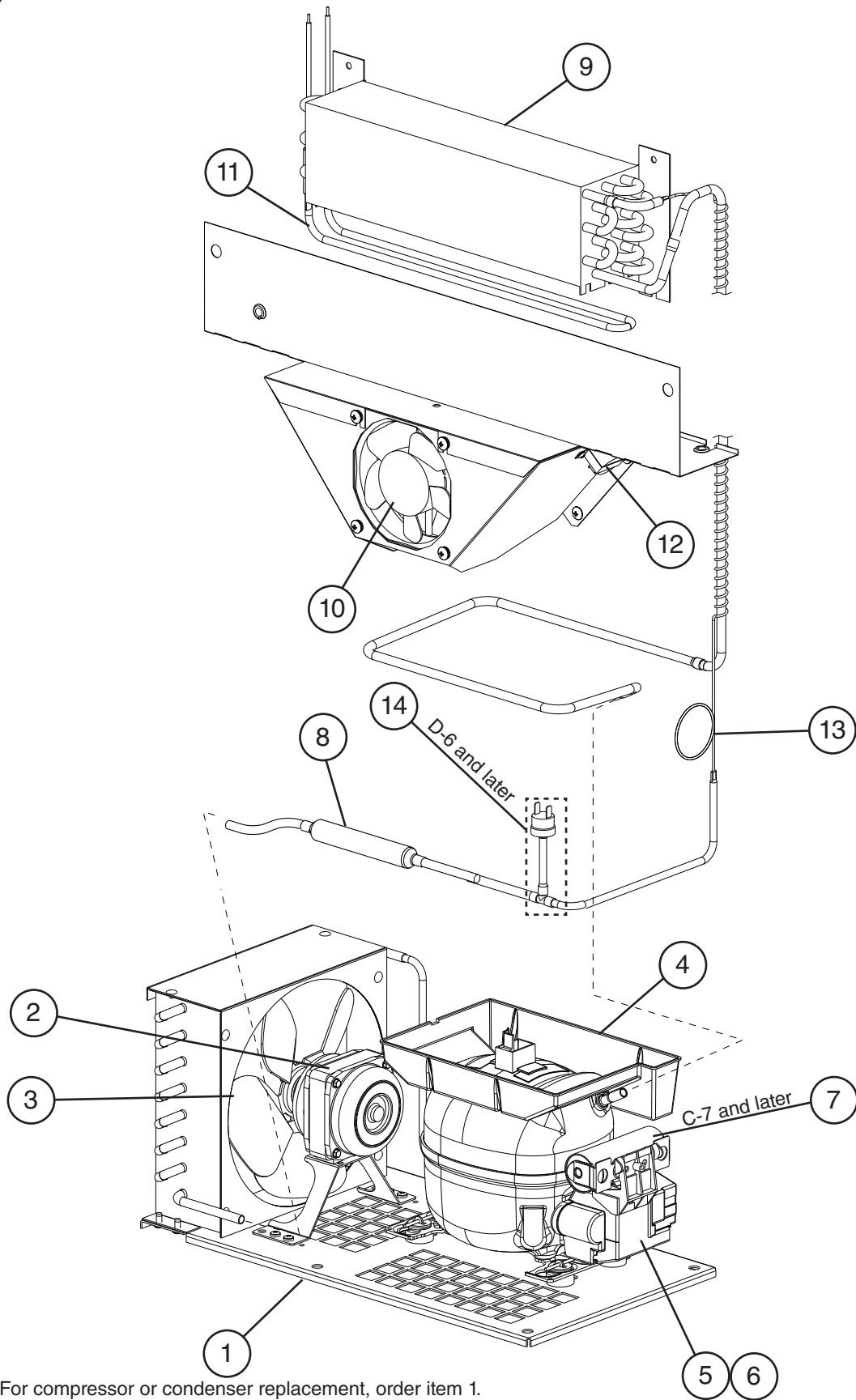
Title: A. Main Assembly Models: CRMR72 Undercounter, Worktop, and Prep Table											
Index No.	Description	Material or Model Number	Part Number	Required Number							
				B-5 to D-6	D-7	D-8 D-9					
16	Interior Panel	-12	1A3476-03	D-6 and earlier models must order Rail Cover Assembly	1	1					
		-16	1A3476-04		1	1					
		-18	1A3476-05		1	1					
		-18M	1A3414-03		1	1					
		-24M	1A3414-04		2	2					
	Top Right Interior Panel	-30M	1A3414-08		1	1					
17	Top Left Interior Panel	-30M	1A3414-09	1	1						
18	Right Side Panel	-12, -16, -18	1A3605-01	1	1						
		-18M,	1A3604-01	1	1						
		-24M, -30M		2	2						
19	Left Side Panel	-12, -16, -18	1A3605-02	1	1						
		-18M	1A3604-02	1	1						
		-24M, -30M		2	2						
20	Rail Handle	-12, -16, -18, -18M	1A3416-01	1	1	1					
		-24M, -30M	1A3416-01	2	2	2					
20A	Pan Head Screws	-12, -16, -18, -18M	7C12I1412	2	2	2					
		-24M, -30M		4	4	4					
21	Rail Cover Bracket	-24M, -30M	4A5790-01	2	2	2					
22	Rail Hood	-12, -18M	3A7329A01	1	1	1					
		-16, -24	3A7372A01	1	1	1					
		-18, -30M	3A7373A01	1	1	1					
23	Right Cutting Board Bracket	-12, -16, -18	4A5496-01	1	1	1					
		-18M, -24M, -30M	1000000393	1	1	1					
24	Left Cutting Board Bracket	-12, -16, -18	4A5496-02	1	1	1					
		-18M, -24M, -30M	1000000392	1	1	1					
25	Center Cutting Board Bracket	-18M, -24M, -30M	1000000394	3	3	3					
26	Rail Divider (runs front-to-back)	-12, -18	1000000342	2	2	2					
		-16		3	3	3					
		-18M, -24M	1000000343	2	2	2					
		-30M		3	3	3					
27	Rail Divider (runs side-to-side)	-12	1000000336	3	3	3					
		-16		4	4	4					
		-18	1000000343	3	3	3					
		-18M	1000000342	6	6	6					
		-24M		8	8	8					
		-30M		10	10	10					

**B. Refrigeration Circuit**  
**CRMR27 Undercounter, Worktop, and Prep Table**  
 A-5 to D-8



Title: B. Refrigeration Circuit Models: CRMR27 Undercounter, Worktop, Prep Table											
Index No.	Description	Material or Model Number	Part Number	Required Number							
				A-5 to B-5	C-5 C-6	C-7 to D-8					
1	Condensing Unit (includes compressor, condenser, and items 2 through 6; C-6 and later also include items 7 and 8; compressor and condenser are not sold individually)	<b>Undercounter, Worktop</b>	3A6801-01	1	-						
			3A8106-01		1	1					
	Condensing Unit (includes compressor, condenser, and items 2 through 7; C-7 and later also include item 8; compressor and condenser are not sold individually)	<b>Prep Table</b>	1000000273	1	1	-					
			3A8106-01			1					
2	Condenser Fan Motor		3A6798-01	1	1	1					
3	Condenser Fan Blade		3A6799-01	1	1	1					
4	Condensate Pan		3A6758-01	1	1	1					
5	Compressor External Protector		3A6746-01	1	1	1					
6	Start Relay	<b>Undercounter, Worktop</b>	3A6745-01	1	-						
			1000000412		1	1					
		<b>Prep Table</b>	1000000412	1	1	1					
7	Start Capacitor	<b>Undercounter, Worktop</b> 233-280MFD, 165VAC	1000000279		1	1					
			<b>Prep Table</b> 233-280MFD, 165VAC	1000000279	1	1	1				
8	Drier		4A5576-01	1	1	1					
9	Evaporator		2A6627-01	1	1	1					
10	Evaporator Fan Motor		4A5343-01	1	1	1					
11	Capillary Tube Replacement Kit		SP-5119	1	1	1					
12	Defrost Heater	<b>Prep Table</b>	3A6443-03			1					

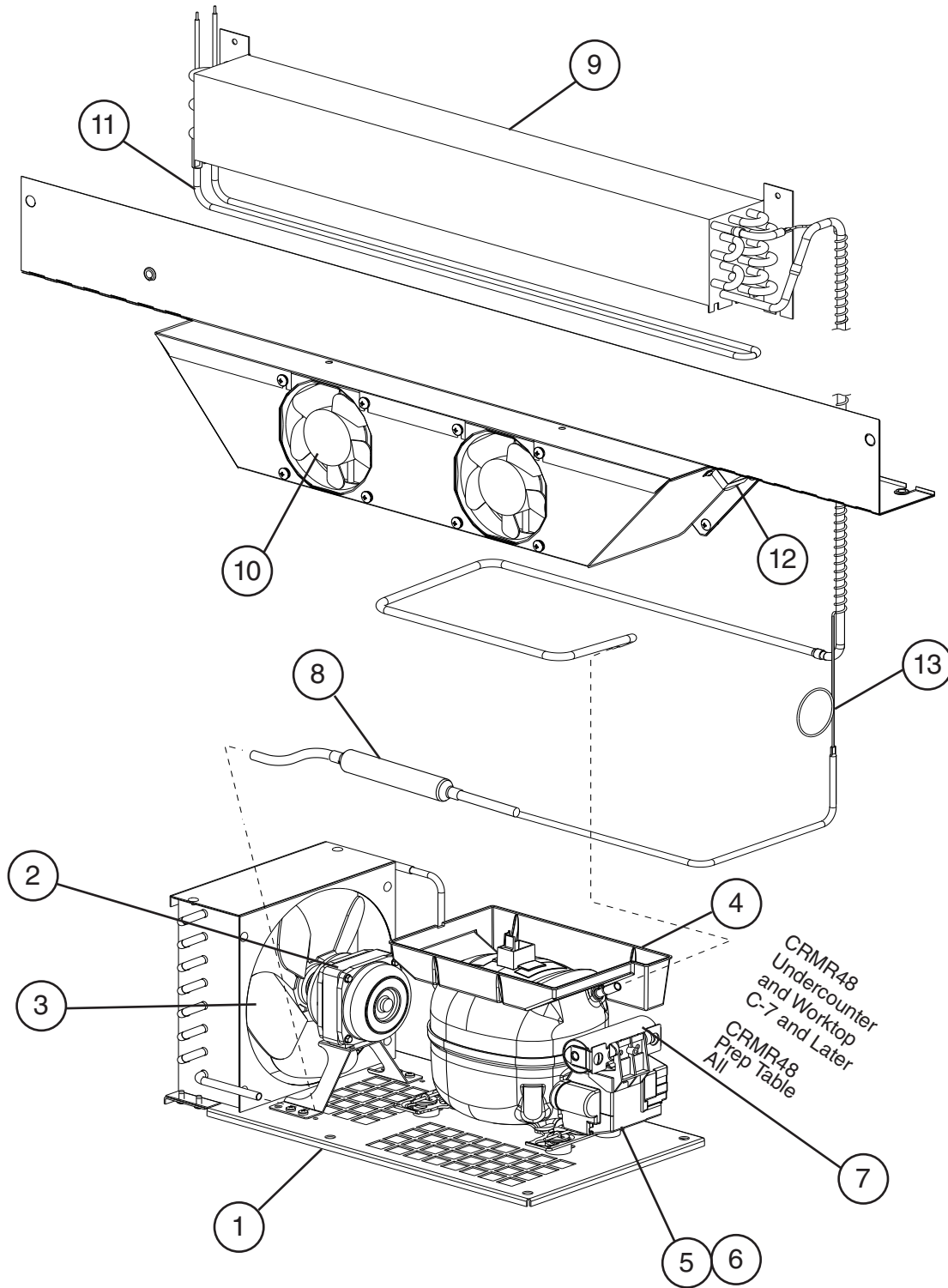
**B. Refrigeration Circuit**  
**CRMF27 Undercounter and Worktop**  
 A-5 to D-7



For compressor or condenser replacement, order item 1.

Title: B. Refrigeration Circuit    Models: CRMF27 Undercounter and Worktop											
Index No.	Description	Material or Model Number	Part Number	Required Number							
				A-5 to C-5	C-6 to D-6	D-7					
1	Condensing Unit (includes compressor, condenser, and items 2 through 6; C-7 and later also include items 7 and 8; compressor and condenser are not sold individually)		3A6802-01	1	-						
			3A7206-01		1	-					
			3A8107-01			1					
2	Condenser Fan Motor		3A6798-01	1	1	1					
3	Condenser Fan Blade		3A6799-01	1	1	1					
4	Condensate Pan		3A6758-01	1	1	1					
5	Compressor External Protector		3A6774-01	1	1	1					
6	Start Relay		3A6775-01	1	-						
			3A7232-01		1	1					
7	Start Capacitor	270-327MFD, 165VAC	4A5525-01		1	1					
8	Drier		4A5576-01	1	1	1					
9	Evaporator		2A6627-01	1	1	1					
10	Evaporator Fan Motor		4A5343-01	1	1	1					
11	Defrost Heater		3A6443-03	1	1	1					
12	Defrost Thermostat		4A0954-02	1	1	1					
13	Capillary Tube Replacement Kit		SP-5120	1	1	1					
14	High-Pressure Switch		4A2516-01		1	1					

## B. Refrigeration Circuit CRMR48 Undercounter, Worktop, and Prep Table A-5 to D-8

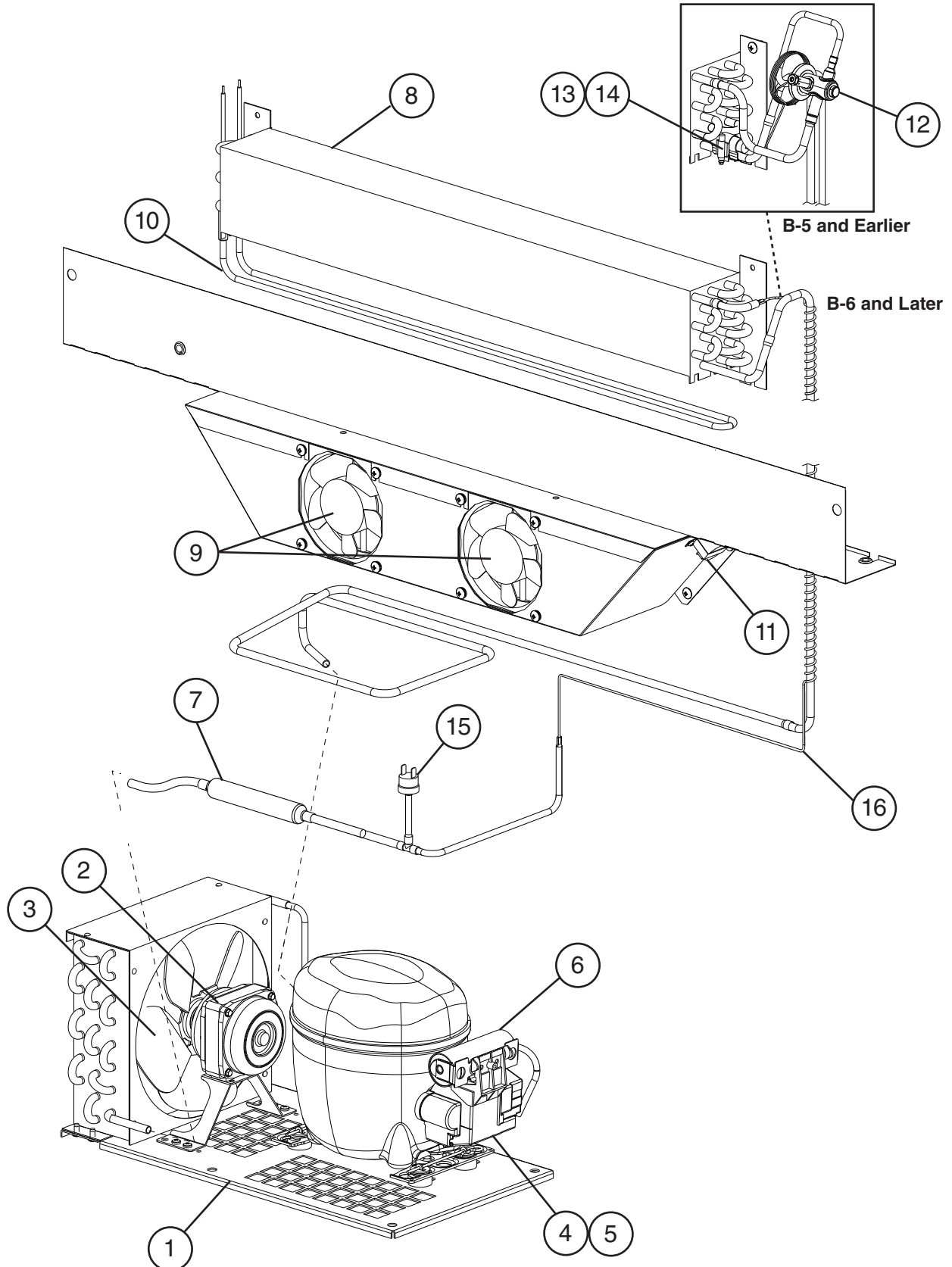


For compressor or condenser replacement, order item 1.



Title: B. Refrigeration Circuit Models: CRMR48 Undercounter, Worktop, and Prep Table											
Index No.	Description	Material or Model Number	Part Number	Required Number							
				A-5 to C-5	C-6	C-7 to D-6	D-8				
1	Condensing Unit (includes compressor, condenser, and items 2 through 6; C-6 and later also include items 7 and 8; compressor and condenser are not sold individually)	<b>Undercounter, Worktop</b>	3A6801-01	1	-						
			3A8106-01		1	1	1				
	Condensing Unit (includes compressor, condenser, and items 2 through 8; compressor and condenser are not sold individually)	<b>Prep Table</b>	1000000273	1	1	-					
			3A8106-01			1	1				
2	Condenser Fan Motor		3A6798-01	1	1	1	1				
3	Condenser Fan Blade		3A6799-01	1	1	1	1				
4	Condensate Pan		3A6758-01	1	1	1	1				
5	Compressor External Protector		3A6746-01	1	1	1	1				
6	Start Relay	<b>Undercounter, Worktop</b>	3A6745-01	1	-						
			1000000412		1	1	1				
		<b>Prep Table</b>	1000000412	1	1	1	1				
7	Start Capacitor	<b>Undercounter, Worktop</b> 233-280MFD, 165VAC	1000000279		1	1	1				
		<b>Prep Table</b> 233-280MFD, 165VAC	1000000279	1	1	1	1				
8	Drier		4A5576-01	1	1	1	1				
9	Evaporator		2A6627-02	1	1	1	1				
10	Evaporator Fan Motor		4A5343-01	2	2	2	2				
11	Defrost Heater	<b>Prep Table</b>	3A6643-02			1	1				
12	Defrost Thermostat	<b>Prep Table</b>	4A0954-02			1	1				
13	Capillary Tube Replacement Kit		SP-5119	1	1	1	1				

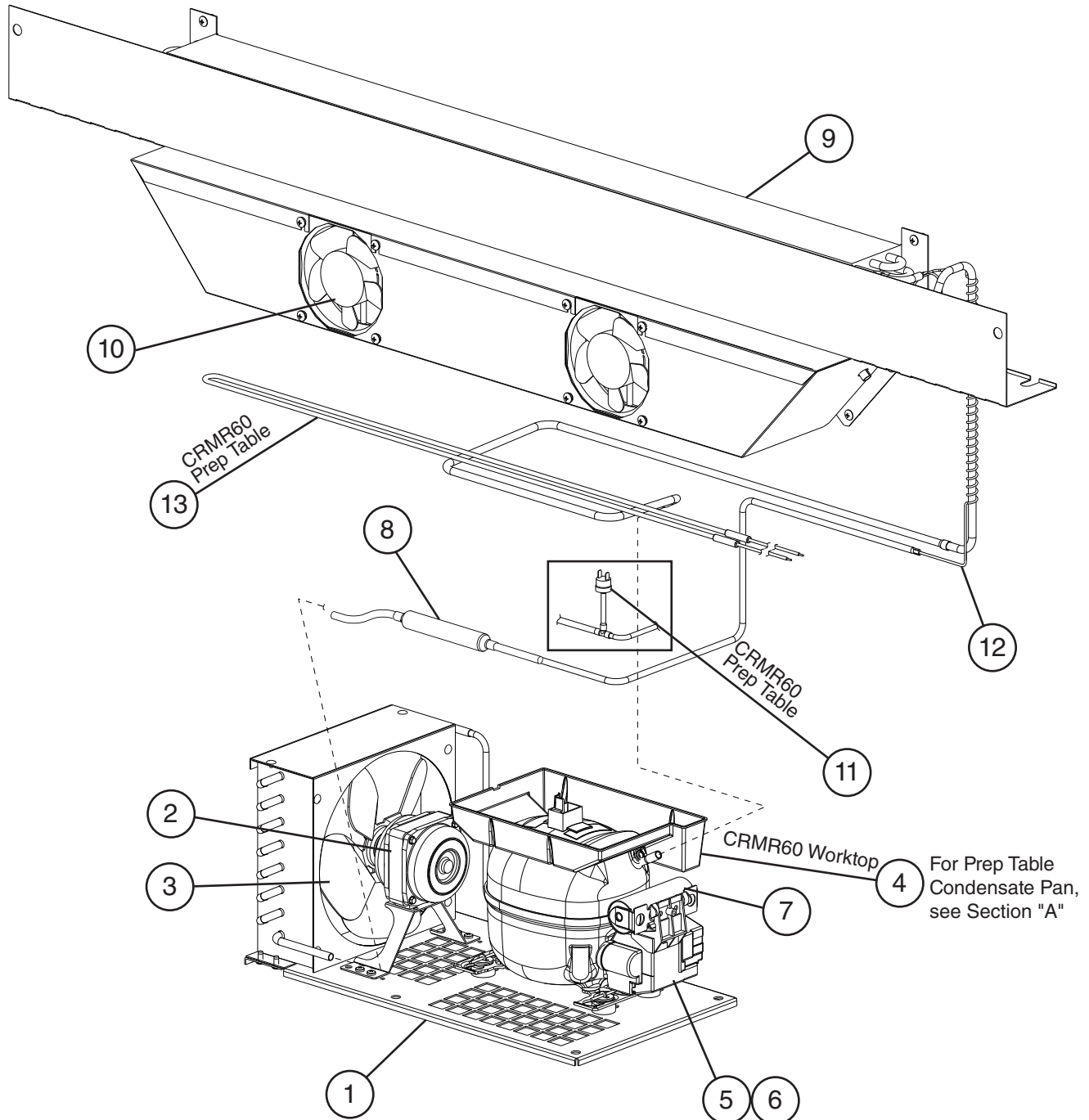
## B. Refrigeration Circuit CRMF48 Undercounter and Worktop A-5 to D-8



For compressor or condenser replacement, order item 1.

Title: B. Refrigeration Circuit    Models: CRMF48 Undercounter and Worktop											
Index No.	Description	Material or Model Number	Part Number	Required Number							
				A-5 B-5	B-6 C-5	C-6 to D-8					
1	Condensing Unit (includes compressor, condenser, and items 2 through 6; C-6 and later also include item 7; compressor and condenser are not sold individually)		3A6934-01	1	1	-					
			3A8108-01			1					
2	Condenser Fan Motor		3A6798-01	1	1	1					
3	Condenser Fan Blade		3A6799-01	1	1	1					
4	Compressor External Protector		3A6936-01	1	1	1					
5	Start Relay		3A6937-01	1	1	1					
6	Start Capacitor	378-454MFD, 115VAC	3A6938-01	1	1	1					
7	Drier		4A5576-01	1	1	1					
8	Evaporator		2A6627-02	1	1	1					
9	Evaporator Fan Motor		4A5471-01	2	2	2					
10	Defrost Heater		3A6443-02	1	1	1					
11	Defrost Thermostat		4A0954-02	1	1	1					
12	Thermostatic Expansion Valve		4A5476-01	1	-						
13	Thermostatic Expansion Valve Bulb Holder		3A6991-01	1	-						
14	Clamp		443461-01	1	-						
15	High-Pressure Switch		4A2516-02	1	1	1					
16	Capillary Tube Replacement Kit		SP-5121		1	1					

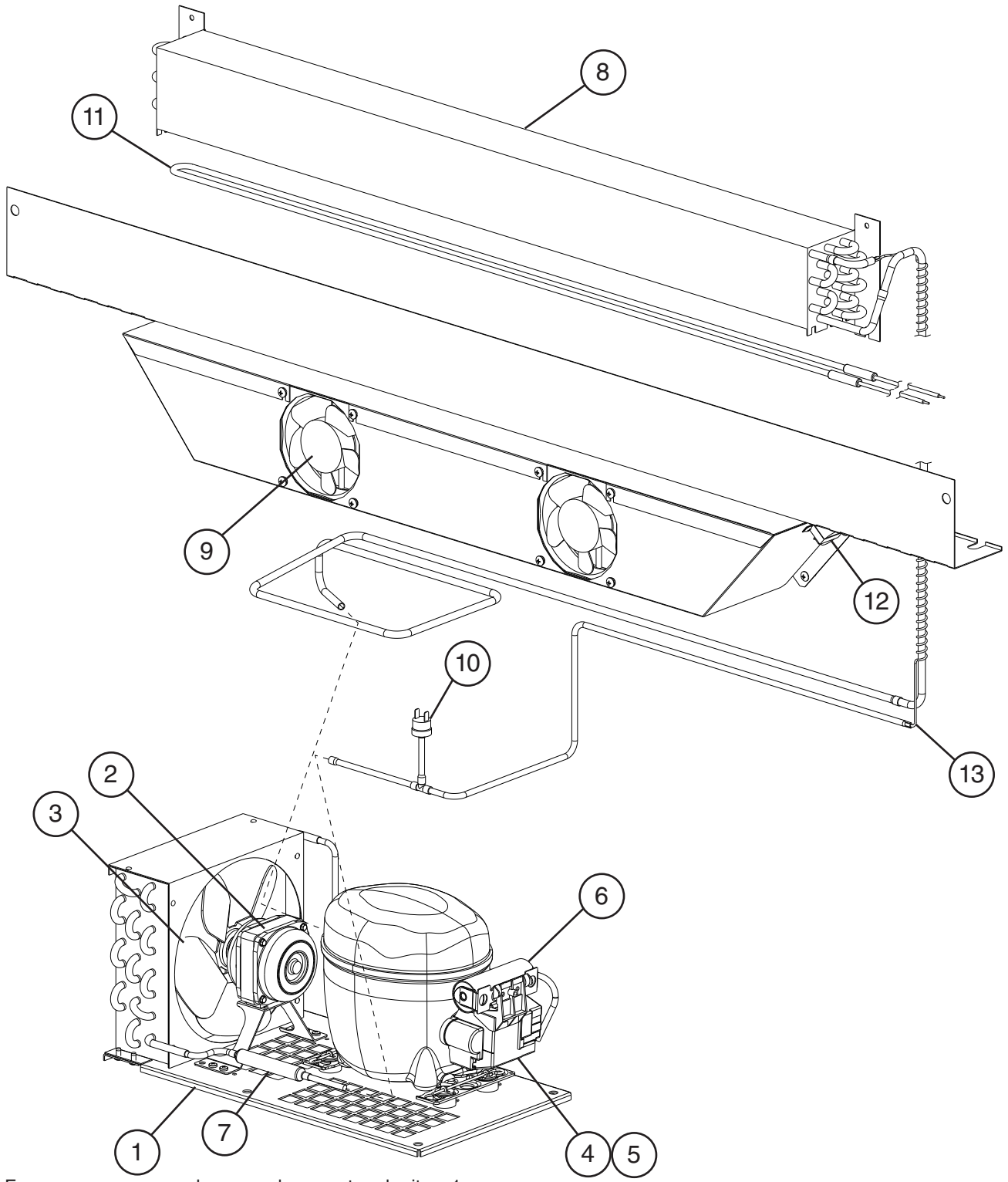
**B. Refrigeration Circuit**  
**CRMR60 Undercounter, Worktop, and Prep Table**  
 B-5 to D-9



For compressor or condenser replacement, order item 1.

Title: B. Refrigeration Circuit Models: CRMR60 Undercounter, Worktop, and Prep Table												
Index No.	Description	Material or Model Number	Part Number	Required Number								
				B-5 C-5	C-6 to D-9							
1	Condensing Unit (includes compressor, condenser, and items 2 through 7; C-6 and later also include item 8; compressor and condenser are not sold individually)	<b>Undercounter, Worktop</b>	3A7206-01	1	-							
			3A8107-01		1							
		<b>Prep Table</b>	3A6934-01	1	-							
			3A8108-01		1							
2	Condenser Fan Motor		3A6798-01	1	1							
3	Condenser Fan Blade		3A6799-01	1	1							
4	Condensate Pan	<b>Worktop</b>	3A6758-01	1	1							
5	Compressor External Protector	<b>Worktop</b>	3A6774-01	1	1							
		<b>Prep Table</b>	3A6936-01	1	1							
6	Start Relay	<b>Worktop</b>	3A7232-01	1	1							
		<b>Prep Table</b>	3A6937-01	1	1							
7	Start Capacitor	<b>Worktop</b> 270-327MFD, 165VAC	4A5525-01	1	1							
		<b>Prep Table</b> 378-454MFD, 115VAC	3A6938-01	1	1							
8	Drier		4A5576-01	1	1							
9	Evaporator		2A6627-03	1	1							
10	Evaporator Fan Motor		4A5343-01	2	2							
11	High-Pressure Switch	<b>Prep Table</b>	4A2516-01	1	1							
12	Capillary Tube Replacement Kit	<b>Undercounter, Worktop</b>	SP-5120	1	1							
		<b>Prep Table</b>	SP-5121	1	1							
13	Defrost Heater	<b>Prep Table</b>	3A7115-03		1							

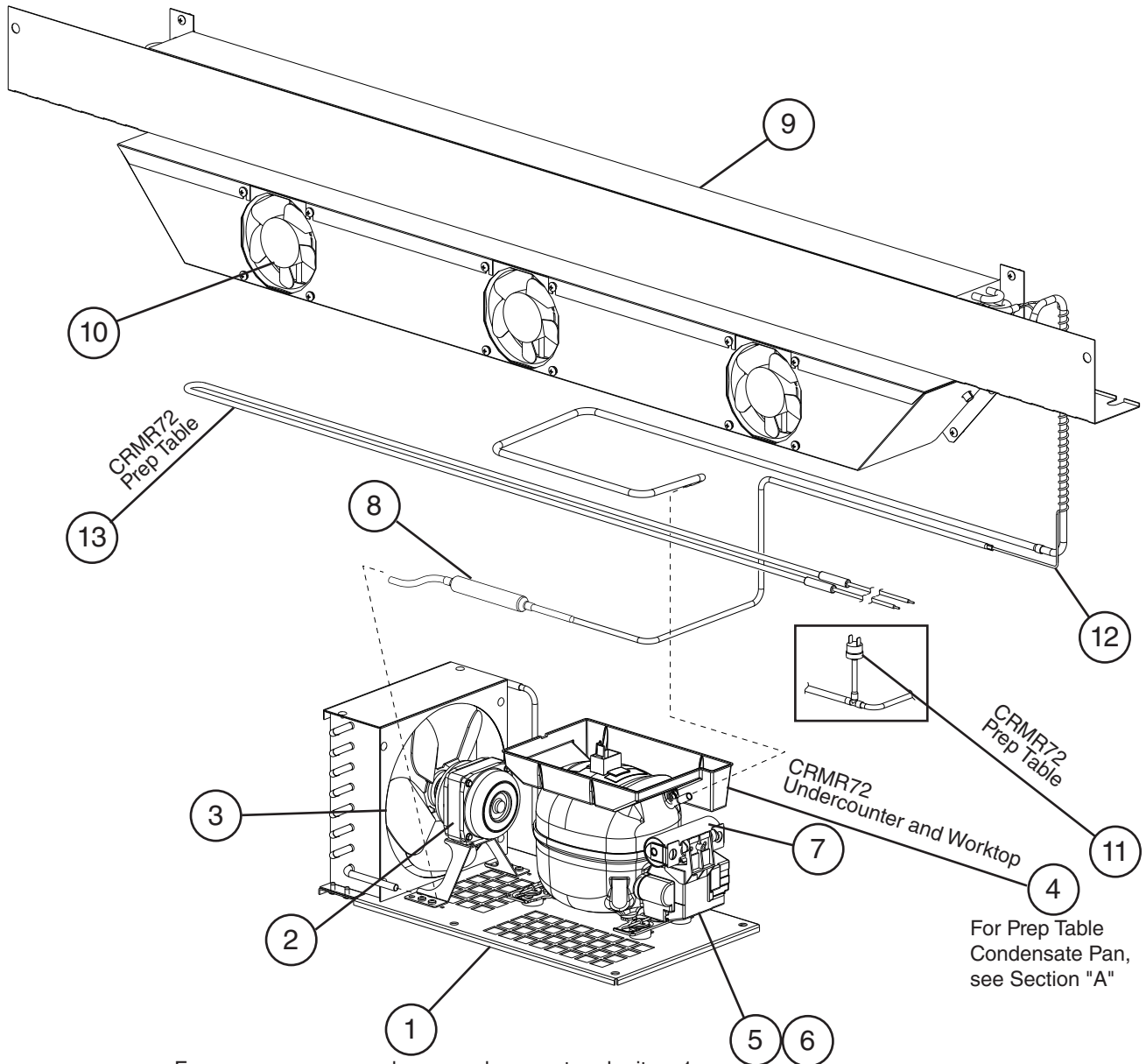
**B. Refrigeration Circuit**  
**CRMF60 Undercounter and Worktop**  
C-5 to D-8



For compressor or condenser replacement, order item 1.

Title: B. Refrigeration Circuit Models: CRMF60 Undercounter and Worktop											
Index No.	Description	Material or Model Number	Part Number	Required Number							
				C-5 to D-6	D-7 D-8						
1	Condensing Unit (includes compressor, condenser, and items 2 through 7; compressor and condenser are not sold individually)		3A8108-01	1	1						
2	Condenser Fan Motor		3A6798-01	1	1						
3	Condenser Fan Blade		3A6799-01	1	1						
4	Compressor External Protector		3A6936-01	1	1						
5	Start Relay		3A6937-01	1	1						
6	Start Capacitor	378-454MFD, 115VAC	3A6938-01	1	1						
7	Drier		4A5576-01	1	1						
8	Evaporator		2A6627-03	1	1						
9	Evaporator Fan Motor		4A5471-01	2	2						
10	High-Pressure Switch		4A2516-01	1	1						
11	Defrost Heater		3A7115-01	1	1						
12	Defrost Thermostat		4A0954-02	1	1						
13	Capillary Tube Replacement Kit		SP-5121	1	1						

**B. Refrigeration Circuit**  
**CRMR72 Undercounter, Worktop, Prep Table**  
 B-5 to D-9



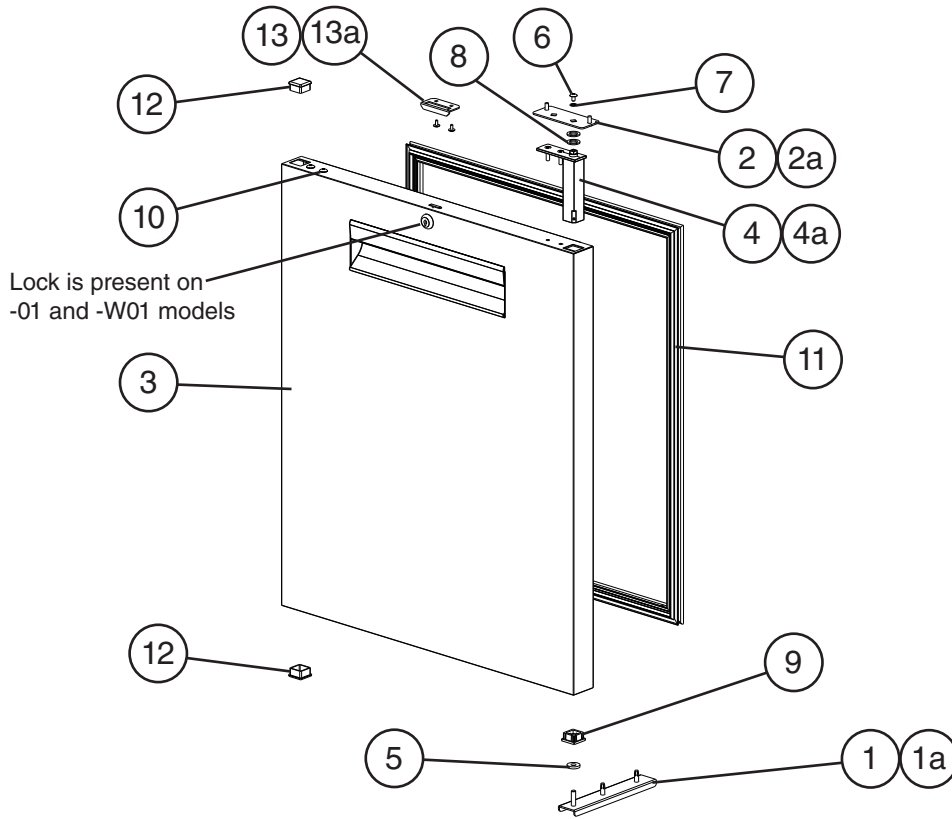
For compressor or condenser replacement, order item 1.

For Prep Table  
 Condensate Pan,  
 see Section "A"



Title: B. Refrigeration Circuit Models: CRMR72 Undercounter, Worktop, and Prep Table												
Index No.	Description	Material or Model Number	Part Number	Required Number								
				B-5 C-5	C-6 to D-9							
1	Condensing Unit (includes compressor, condenser, and items 2 through 7; C-6 and later also include item 8; compressor and condenser are not sold individually)	<b>Undercounter, Worktop</b>	3A7206-01	1	-							
			3A8107-01		1							
		<b>Prep Table</b>	3A6934-01	1	-							
			3A8108-01		1							
2	Condenser Fan Motor		3A6798-01	1	1							
3	Condenser Fan Blade		3A6799-01	1	1							
4	Condensate Pan	<b>Undercounter, Worktop</b>	3A6758-01	1	1							
5	Compressor External Protector	<b>Undercounter, Worktop</b>	3A6774-01	1	1							
		<b>Prep Table</b>	3A6936-01	1	1							
6	Start Relay	<b>Undercounter, Worktop</b>	3A7232-01	1	1							
		<b>Prep Table</b>	3A6937-01	1	1							
7	Start Capacitor	<b>Undercounter, Worktop</b> 270-327MFD, 165VAC	4A5525-01	1	1							
		<b>Prep Table</b> 378-454MFD, 115VAC	3A6938-01	1	1							
8	Drier		4A5576-01	1	1							
9	Evaporator		2A6627-04	1	1							
10	Evaporator Fan Motor		4A5343-01	3	3							
11	High-Pressure Switch	<b>Prep Table</b>	4A2516-01	1	1							
12	Capillary Tube Replacement Kit	<b>Undercounter, Worktop</b>	SP-5120	1	1							
		<b>Prep Table</b>	SP-5121	1	1							
13	Defrost Heater	<b>Prep Table</b>	3A7115-04	1	1							

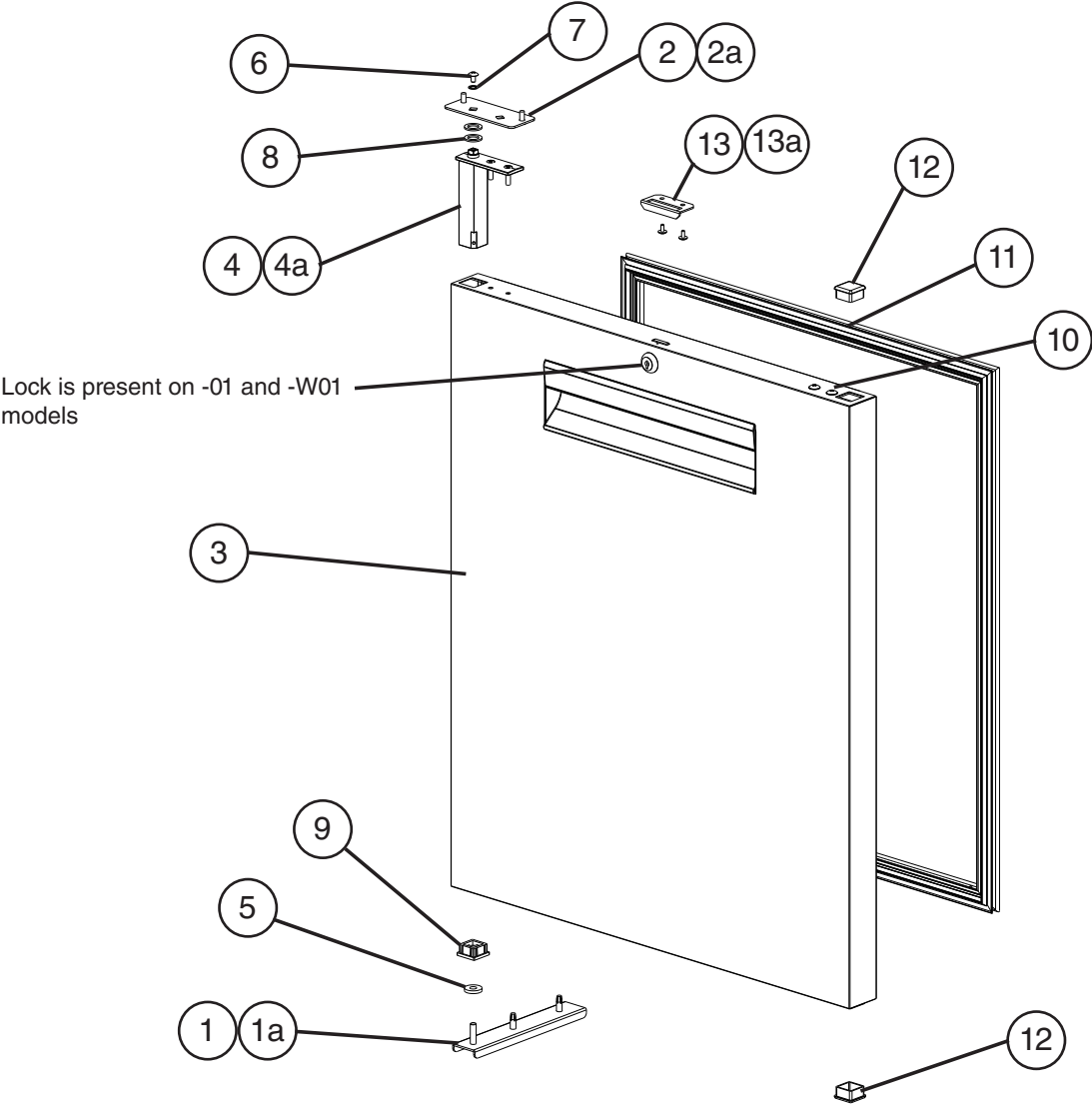
### C. Door-Right Hinged Undercounter, Worktop, Prep Table A-5 to D-9



Title: C. Door-Right Hinged		Models: Undercounter, Worktop, Prep Table		Required Number							
Index No.	Description	Material or Model Number	Part Number	A-5 to D-6	D-6 (E) to D-9						
				1	Lower Hinge Bracket		3A6681G01	1	1		
1a	Hex Head Tapping Bolt	1/4-20x3/4	4A5213-01	2	2						
2	Upper Hinge Bracket		3A6810-01	1	1						
2a	Truss Head Screw	5x12, SS	7C32-0512	2	2						

Title: C. Door-Right Hinged Models: Undercounter, Worktop, Prep Table										
Index No.	Description	Material or Model Number	Part Number	Required Number						
				A-5 to D-6	D-6 (E) to D-9					
3	Door Assembly without Locks (includes items 4 through 12)	<b>CRMR27 (All except -01 and -W01)</b> <b>CRMF27 (All except -01 and -W01)</b>	2A6594G01	1	-					
			2A7322G01		1					
		<b>CRMR48 (All except -01 and -W01)</b> <b>CRMF48 (All except -01 and -W01)</b> <b>CRMR72 (All)</b>	2A6596G01	1	-					
			2A7324G01		1					
		<b>CRMR60 (All)</b> <b>CRMF60 (All)</b>	2A6778G01	1	-					
	2A7328G01			1						
	Door Assembly with Locks (includes items 4 through 12)	<b>CRMR27-01</b> <b>CRMR27-W01</b> <b>CRMF27-01</b> <b>CRMF27-W01</b>	1A2421G01	1	-					
			1A7323G01		1					
		<b>CRMR48-01</b> <b>CRMR48-W01</b> <b>CRMF48-01</b> <b>CRMF48-W01</b>	2A6761G01	1	-					
			2A7327G01		1					
4	Hinge Spring Cartridge (includes items 5 through 9)		3A6258-01	1	1					
4a	Countersunk Screw	5x20, SS	7C42-0520	2	2					
5	Thrust Washer		4A5234-01	1	1					
6	Screw		4A5230-01	1	1					
7	Lockwasher		4A5231-01	1	1					
8	Thrust Washer		4A5233-01	2	2					
9	Bearing		4A5232-01	1	1					
10	Truss Head Screw (filler screws)	5x10, SS	7C32-0510	2	2					
11	Gasket	<b>CRMR27 (All)</b> <b>CRMF27 (All)</b>	2A5192-05	1	-					
			2A6996-05		1					
		<b>CRMR48 (All)</b> <b>CRMF48 (All)</b> <b>CRMR72 (All)</b>	2A5192-06	1	-					
			2A6996-06		1					
		<b>CRMR60 (All)</b> <b>CRMF60 (All)</b>	2A5192-09	1	-					
2A6996-09			1							
12	End Cap		4A5432-01	2	2					
13	Strike Plate for Doors with Locks	<b>-01 and -W01 Models</b>	4A5493-01	1	1					
13a	T2 Screw	<b>-01 and -W01 Models</b> 4x8, SS	7P32-0408	2	2					

**D. Door-Left Hinged**  
**Undercounter, Worktop, Prep Table**  
A-5 to D-9

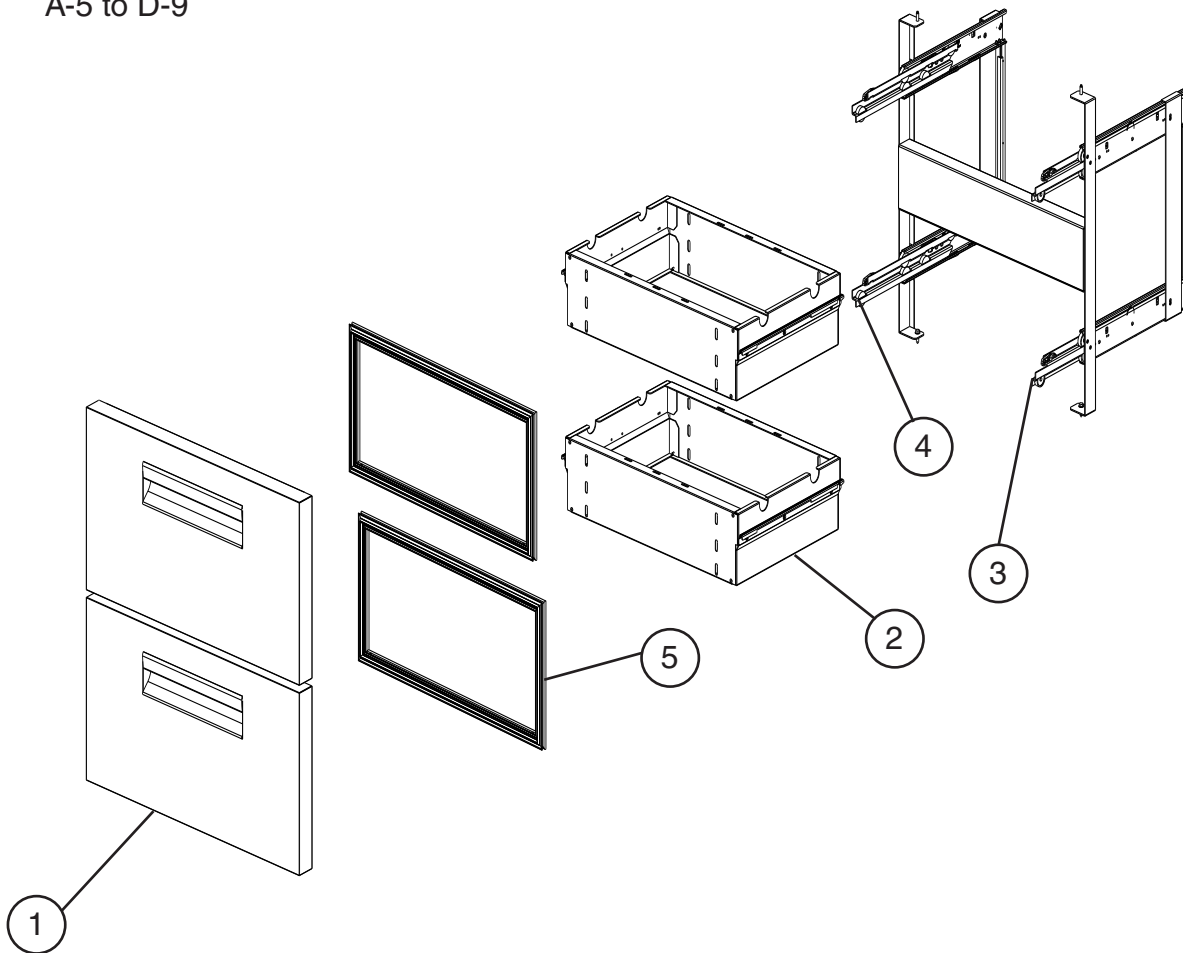


Title: D. Door-Left Hinged Models: Undercounter, Worktop, Prep Table										
Index No.	Description	Material or Model Number	Part Number	Required Number						
				B-5 to D-6	D-6 (E) to D-9					
1	Lower Hinge Bracket		3A6681G01	1	1					
1a	Hex Head Tapping Bolt	1/4-20x3/4	4A5213-01	2	2					
2	Upper Hinge Bracket		3A6810-01	1	1					
2a	Truss Head Screw	5x12, SS	7C32-0512	2	2					
3	Door Assembly without Locks (includes items 4 through 12)	<b>CRMR48 (All except -01 and -W01)</b> <b>CRMF48 (All except -01 and -W01)</b> <b>CRMR72 (All)</b>	2A6598G01	1	-					
			2A7325G01		1					
		<b>CRMR60 (All)</b> <b>CRMF60 (All)</b>	2A6787G01	1	-					
	Door Assembly with Locks (includes items 4 through 12)	<b>CRMR48-01</b> <b>CRMR48-W01</b> <b>CRMF48-01</b> <b>CRMF48-W01</b>	2A6759G01	1	-					
			2A7326G01		1					
4	Hinge Spring Cartridge (includes items 5 through 9)		3A6258-01	1	1					
4a	Countersunk Screw	5x20, SS	7C42-0520	2	2					
5	Thrust Washer		4A5234-01	1	1					
6	Screw		4A5230-01	1	1					
7	Lockwasher		4A5231-01	1	1					
8	Thrust Washer		4A5233-01	2	2					
9	Bearing		4A5232-01	1	1					
10	Truss Head Screw (filler screws)	5x10, SS	7C32-0510	2	2					
11	Gasket	<b>CRMR48 (All)</b> <b>CRMF48 (All)</b> <b>CRMR72 (All)</b>	2A5192-06	1	-					
			2A6996-06		1					
		<b>CRMR60 (All)</b>	2A5192-09	1	-					
		2A6996-09		1						
12	End Cap		4A5432-01	2						
13	Strike Plate for Doors with Locks	<b>-01 and -W01</b>	4A5493-01	1	1					
13a	T2 Screw	<b>-01 and -W01</b> 4x8, SS	7P32-0408	2	2					

## E. Drawer

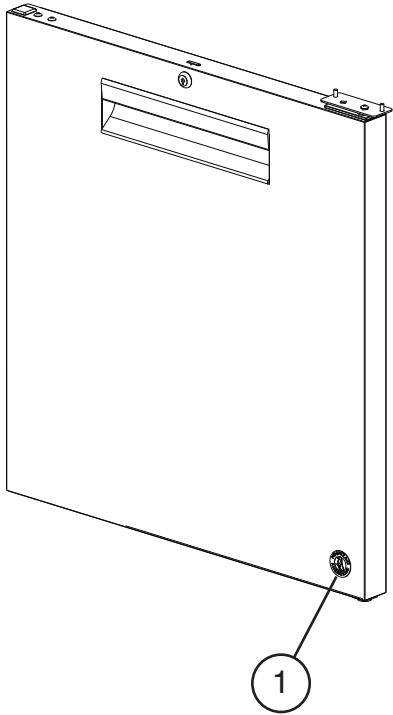
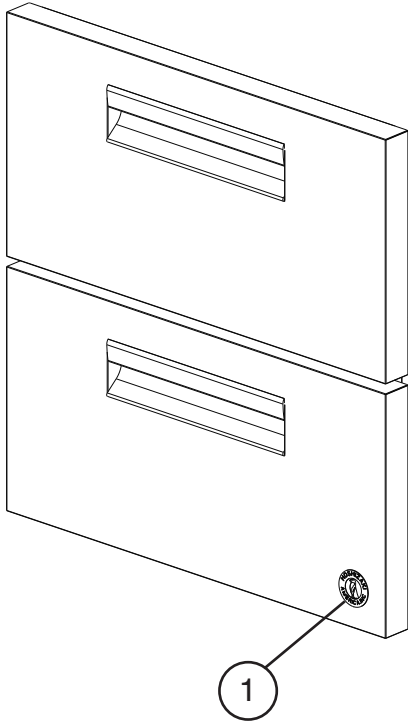
### Undercounter, Worktop, Prep Table (-D)(-D4)(-D6)

A-5 to D-9



Title: E. Drawer Models: Undercounter, Worktop, Prep Table					Required Number							
Index No.	Description	Material or Model Number	Part Number	A-5 to D-9								
				1	Drawer Face	<b>CRM_27-D (All)</b>	2A7510G01	1				
		<b>CRM_48-D (All)</b>	2A7511G01	1								
		<b>CRM_72-D (All)</b>										
		<b>CRM_60-D (All)</b>	2A7512G01	1								
2	Drawer Box	<b>CRM_27-D (All)</b>	3A8185G01	1								
		<b>CRM_48-D (All)</b>	3A8191G01	1								
		<b>CRM_72-D (All)</b>										
		<b>CRM_60-D (All)</b>	3A8294G01	1								
3	Right Slide Roller		4A5663-02	1								
4	Left Slide Roller		4A5664-02	1								
5	Gasket	<b>CRM_27-D (All)</b>	2A5192-15	1								
		<b>CRM_48-D (All)</b>	2A5192-17	1								
		<b>CRM_72-D (All)</b>										
		<b>CRM_60-D (All)</b>	2A5192-16	1								

**F. Accessories & Labels**  
**Undercounter, Worktop, Prep Table**  
A-5 to D-9



Title: F. Accessories & Labels    Models: Undercounter, Worktop, Prep Table												
Index No.	Description	Material or Model Number	Part Number	Required Number								
				A-5 to D-7								
1	Penguin Label		456246-02	1								
2	4" Caster Kit (includes items 3 and 4)	<b>HS-5035 Undercounter</b>	4A5434A01	1								
	2" Caster Kit (includes items 3, 4, and 4a)	<b>HS-5037 Undercounter Low Profile</b>	4A5436A01	1								
	6" Caster Kit (includes items 3 and 4)	<b>HS-5036 Worktop Prep Table</b>	4A5435A01	1								
3	4" Non-Locking Caster	<b>Undercounter</b>	4A5427-01	2								
	2" Non-Locking Caster	<b>Undercounter Low Profile</b>	4A5429-01	2								
	6" Non-Locking Caster	<b>Worktop Prep Table</b>	4A5428-01	2								
4	4" Locking Caster	<b>Undercounter</b>	4A5427-02	2								
	2" Locking Caster	<b>Undercounter Low Profile</b>	4A5429-02	2								
	6" Locking Caster	<b>Worktop Prep Table</b>	4A5428-02	2								
4a	Wrench	<b>Undercounter Low Profile</b>	4A5492-01	1								
<b>Prep Table Specific Parts</b>												
5	1/6 Size Pan, 4" Depth	<b>-8</b>	1000000344	8								
		<b>-12 and -12M</b>		12								
		<b>-18 and -18M</b>		18								
		<b>-24M</b>		24								
		<b>-30M</b>		30								
6	Cutting Board	<b>CRMR27-8</b>	3A4894-09	1								
		<b>CRMR27-12M</b>	3A4894-07	1								
		<b>CRMR48-8</b> <b>CRMR48-12</b>	3A4894-10	1								
		<b>CRMR48-12M</b> <b>CRMR48-18M</b>	3A4894-08	1								
		<b>CRMR60-8</b> <b>CRMR60-12</b> <b>CRMR60-16</b>	3A4894-13	1								
		<b>CRMR60-12M</b> <b>CRMR60-18M</b> <b>CRMR60-24M</b>	3A4894-11	1								
		<b>CRMR72-12</b> <b>CRMR72-16</b> <b>CRMR72-18</b>	3A4894-14	1								
		<b>CRMR72-18M</b> <b>CRMR72-24M</b> <b>CRMR72-30M</b>	3A4894-12	1								