

| | |
|----------|---------------|
| NO. | U2AF-864 |
| ISSUED: | JAN. 31, 1990 |
| REVISED: | NOV. 16, 1993 |

HOSHIZAKI

MODULAR FLAKER

MODEL F-1100MAA

PARTS LIST

| | | |
|-----|------|------|
| K-1 | JAN. | 1990 |
| K-2 | MAR | 1990 |
| A-0 | DEC. | 1990 |
| B-0 | DEC. | 1991 |
| B-1 | SEP. | 1992 |
| B-2 | OCT. | 1992 |
| C-0 | DEC. | 1992 |
| C-1 | AUG. | 1993 |

FINAL

MATERIAL ABBREVTATIONS

PLASTIC

| | | |
|------|---|------------------------------------|
| ABS | = | Acrylonitrile-butadien-styrene |
| AC | = | Polyacetal |
| EVA | = | Elhylene vinyl acetate |
| PA | = | Polyamide =Nylon |
| PC | = | Polycarbonate |
| PE | = | Polyethylene |
| PES | = | Polyester |
| PETP | = | Polyethylene terephthalate =Tetlon |
| PF | = | Phenol-formaldehyde |
| PP | = | Poly prop yleneoride |
| PS | = | Polystyrene |
| PTFE | = | Polytetrafluoroethylene =Teflon |
| PUR | = | Polyurethane |
| PVC | = | Polyvinyl chloride |

RUBBER

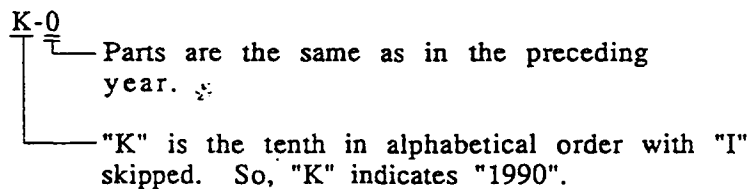
| | | |
|------|---|--------------------------|
| EPDM | = | EP rubber |
| NBR | = | Nitrile butadiene rubber |
| NR | = | Natural rubber |
| SI.R | = | Silicone rubber |
| SY.R | = | Synthetic rubber |

STEEL

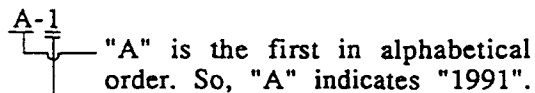
| | | |
|-----|---|------------------|
| G.S | = | Galvanized steel |
| S.S | = | Stainless steel |

AUXILIARY CODE

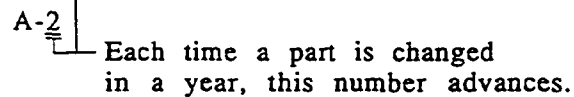
Ex.1



Ex.2



Ex.3

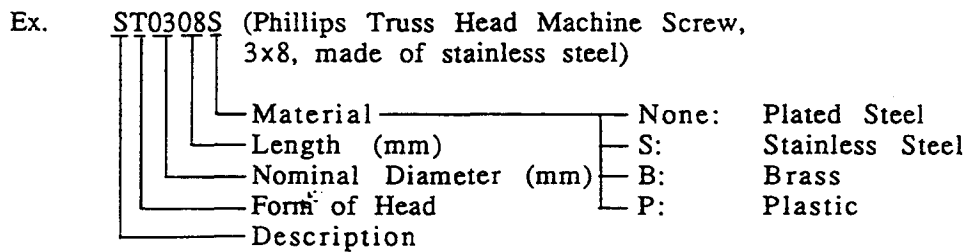


(Note)

- = Part deleted.
- X = Part deleted and replaced by "O" pan.
- O = New pan for "X" in the same auxiliary code.

FASTENER ABBREVIATION LIST

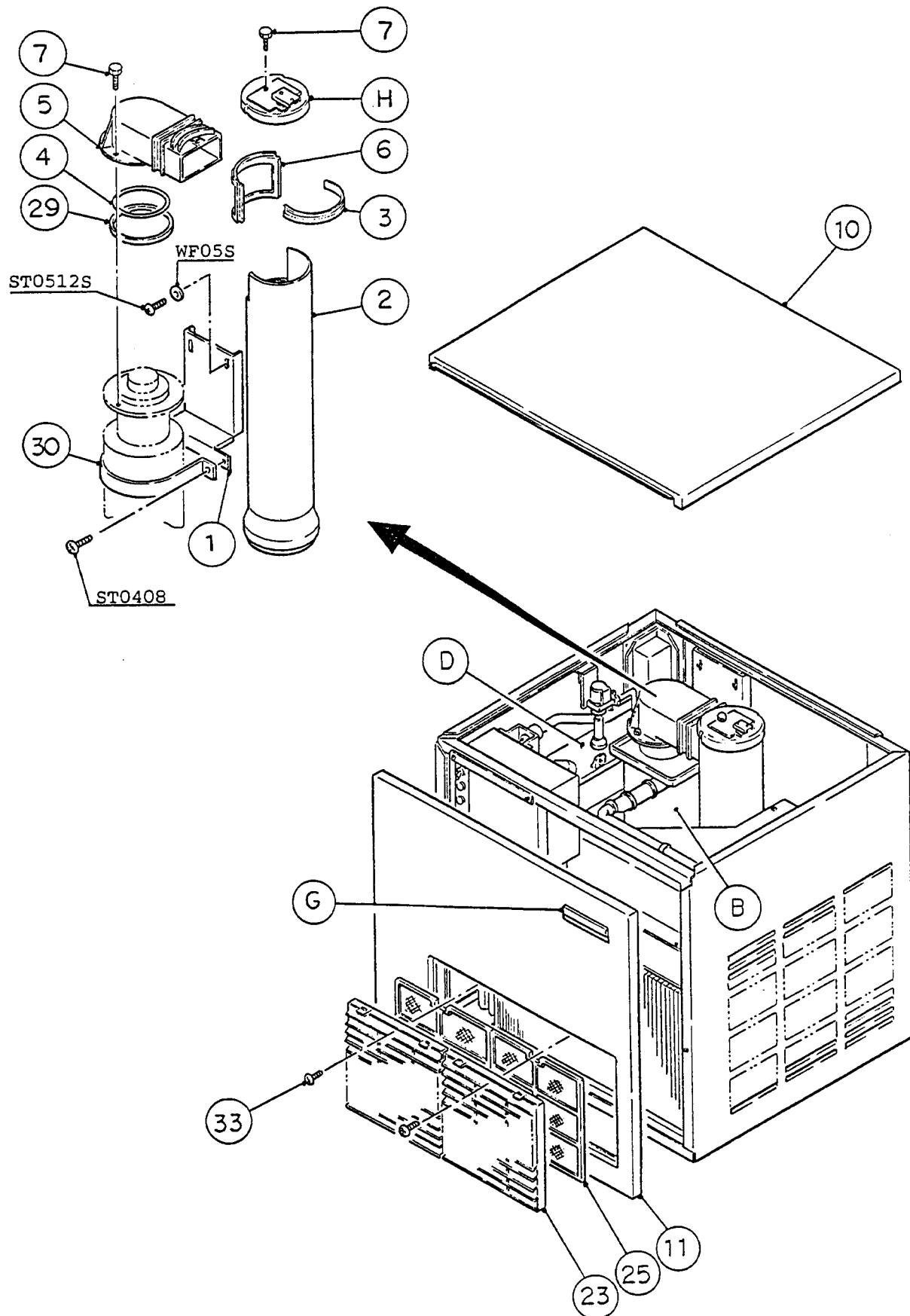
| | |
|-----|---|
| ST | Phillips Truss Head Machine Screw |
| SP | Phillips Pan Head Machine Screw |
| SF | Phillips Flat Head Machine Screw |
| SS | Phillips Pan Head Machine Screw with Split Lock Washer |
| SW | Phillips Pan Head Machine Screw with Split Lock Washer and Flat Washer |
| T1 | Phillips Truss Head Tapping Screw (Correspond to Type A) |
| T2 | Phillips Truss Head Tapping Screw (Correspond to Type B) |
| T3 | Phillips Truss Head Tapping Screw (Correspond to Type C) |
| FT | Phillips Truss Head Tapping Screw (Special) |
| BH | Hexagon Head Bolt |
| EC | Socket Head Cap Screw |
| BS | Hexagon Bolt with Split Washer |
| BW | Hexagon Bolt with Split Washer and Flat Washer |
| BF | Hexagon Flange Bolt |
| BR | Cross-Recessed Hexagon Head Bolt |
| BRW | Cross-Recessed Hexagon Head Bolt with Split Lock Washer and Flat Washer |
| WL | Split Lock Washer |
| WT | External Tooth Washer |
| WF | Flat Washer |
| WS | Spring Washer |
| NH | Hexagon Nut |
| NF | Hexagon Flange Nut |
| NC | Hexagon Cap Nut |
| NS | Square Nut |
| NW | Wing Nut |

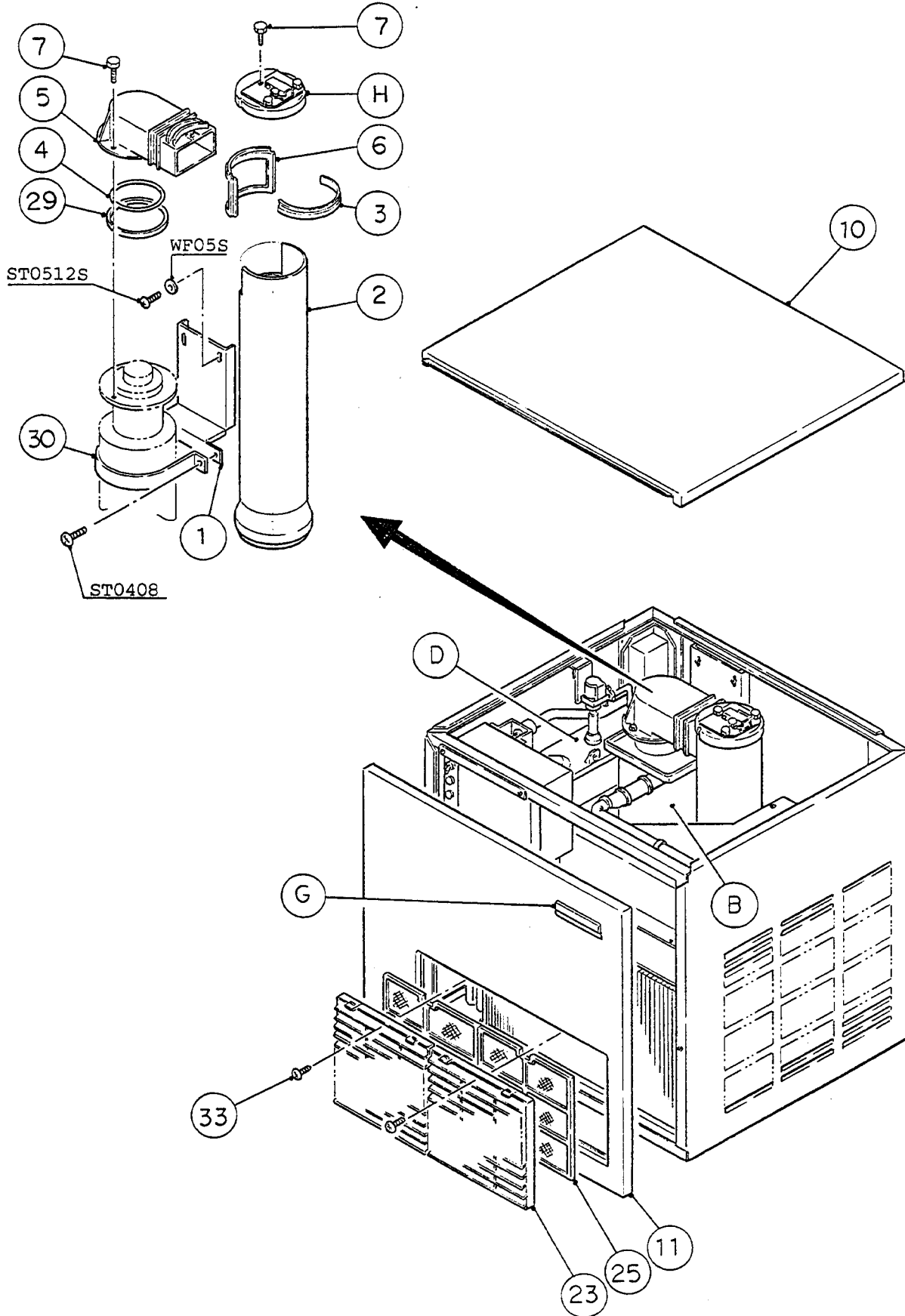


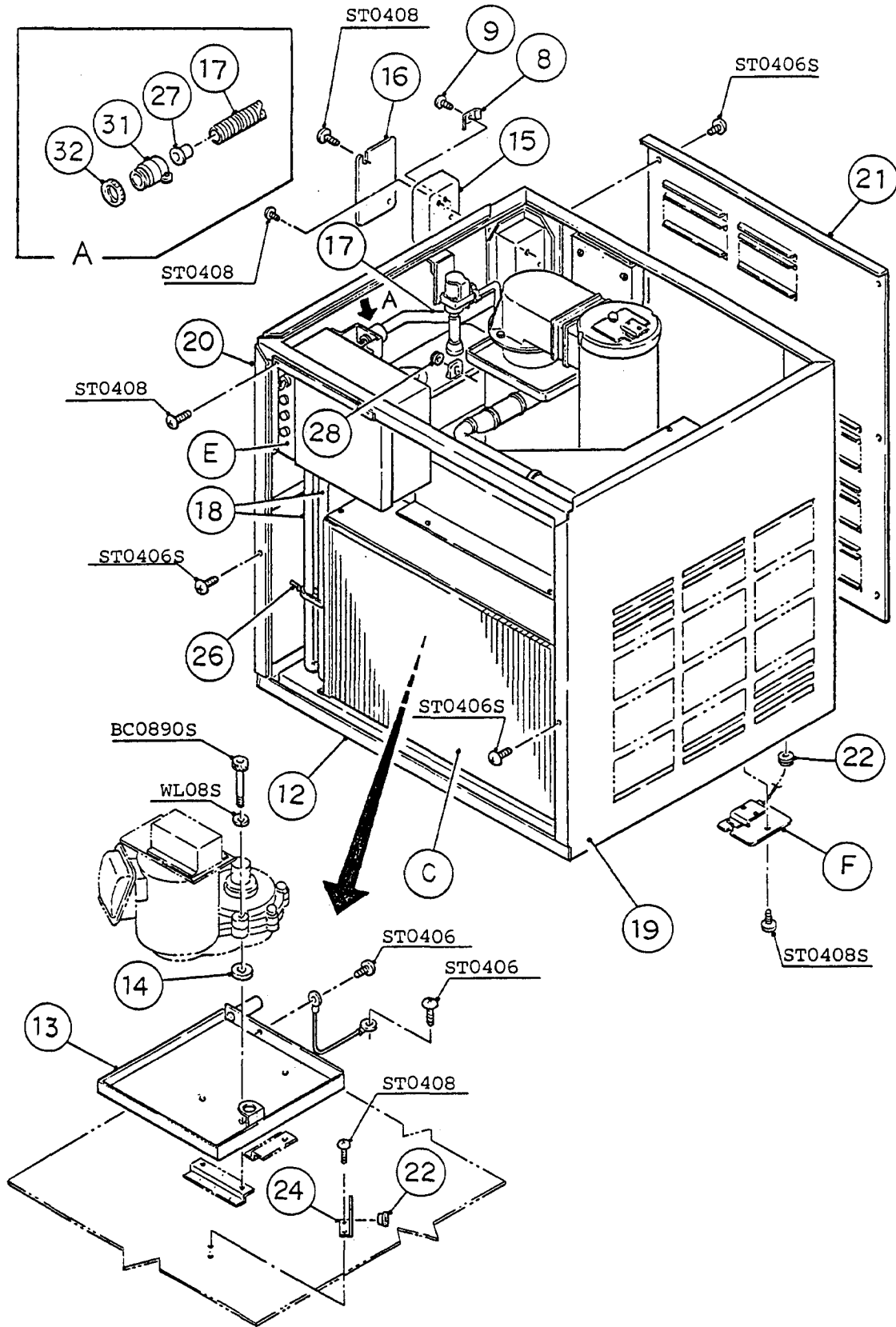
(Note) Second character is numerical except the list.

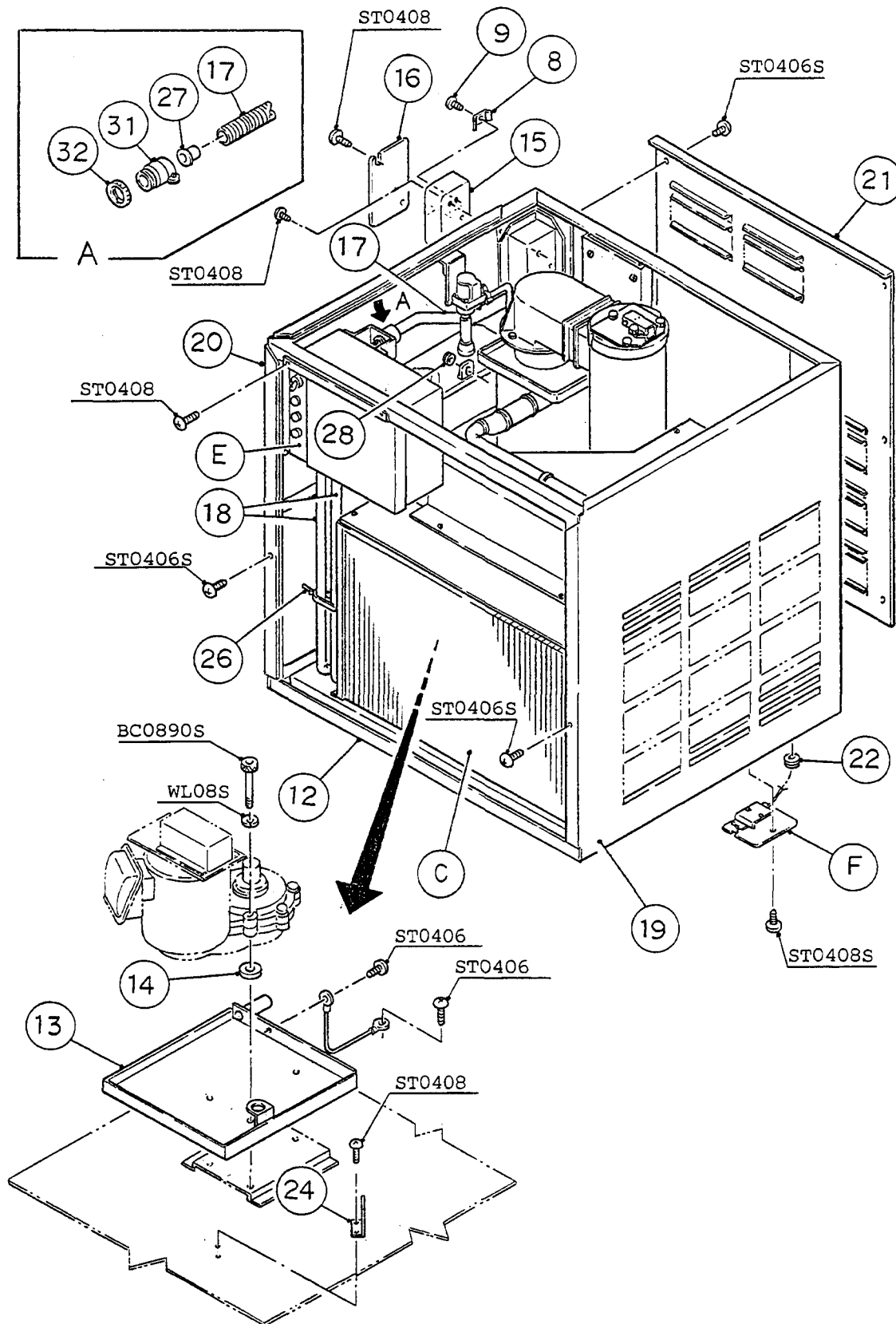
Ex. SI, S2, B3

And abbreviations and names are shown under the illustration.







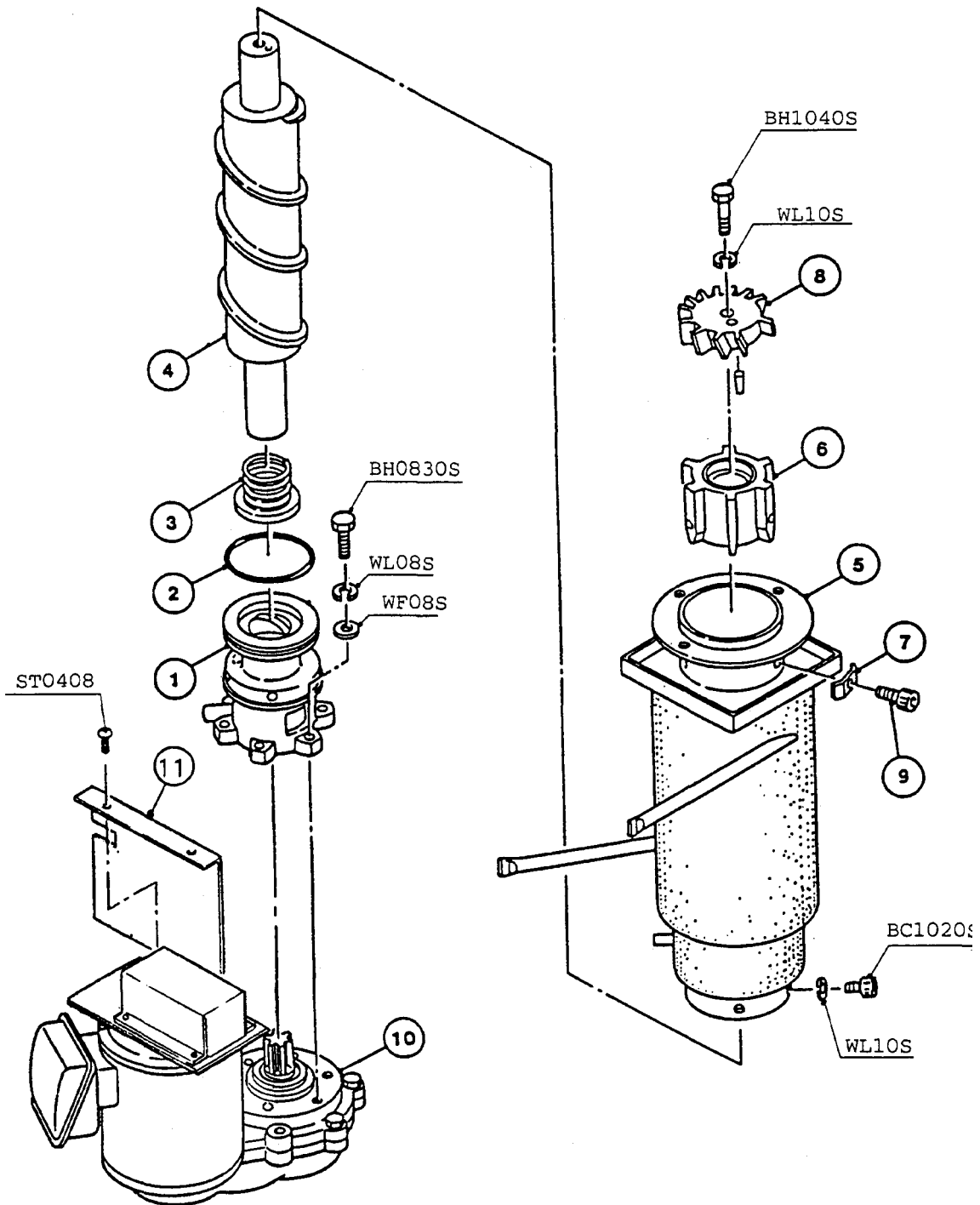


| MODEL F-1100MAA | | TITLE A. ICE FLAKER ASSY | | | | | | |
|--------------------|----------------------|-----------------------------|---------------------------|--------------|-----|-----|-----|-----|
| INDEX NO. | DESCRIPTION | MATERIAL OR MODEL NUMBER | PART NUMBER | REQ'D NUMBER | | | | |
| | | | | K-1 | K-2 | A-0 | B-0 | B-1 |
| B | EVAPORATOR ASSY | - | 319958A03 | 1 | 1 | 1 | 1 | 1 |
| C | REFRIGERATION UNIT | - | 104900A01 | 1 | 1 | 1 | 1 | 1 |
| D | WATER CIRCUIT | - | 103078A04 | 1 | 1 | 1 | 1 | 1 |
| E | CONTROL BOX ASSY | - | 214652A01 | 1 | 1 | 1 | 1 | 1 |
| F | BIN SWITCH ASSY | - | 317649A01 | 1 | 1 | 1 | 1 | 1 |
| G | LABEL LOCATION | - | 213149A04 | 1 | 1 | 1 | 1 | 1 |
| H | SPOUT CONTROL ASSY | - | 323313A01 | 1 | - | | | |
| | | | 325071A01 | | 1 | 1 | 1 | 1 |
| 1 | Bracket - Evaporator | G.S | 431735-01 | 1 | 1 | 1 | 1 | 1 |
| 2 | Chute | PE | 315723-01 | 1 | 1 | 1 | 1 | 1 |
| 3 | Packing - Chute | EPDM | 425255-01 | 1 | 1 | 1 | 1 | 1 |
| 4 | "O" Ring | G95 | 7616-G095 | 1 | 1 | 1 | 1 | 1 |
| 5 | Spout | PC | 103932G01 | 1 | 1 | 1 | 1 | 1 |
| 6 | Packing - Spout | EPDM | 315722-01 | 1 | 1 | 1 | 1 | 1 |
| 7 | Thumbscrew | S.S, ABS | 415949G03 | 1 | 1 | 1 | 1 | 1 |
| 8 | Square Washer | Copper | 433537-01 | 1 | 1 | 1 | 1 | 1 |
| 9 | Screw - Grounding | Brass | 433304-01 | 1 | 1 | 1 | 1 | 1 |
| 10 | Top Panel | S.S | 315750G01 | 1 | 1 | 1 | 1 | 1 |
| 11 | Front Panel | S.S | 317189-02 | 1 | 1 | 1 | 1 | 1 |
| 12 | Frame | G.S | 315778G10 | 1 | 1 | 1 | 1 | 1 |
| 13 | Drip Pan | S.S | 317168G01 | 1 | 1 | 1 | 1 | 1 |
| 14 | Washer | PVC | 422916-01 | 3 | 3 | 3 | 3 | 3 |
| 15 | Junction Box | No.6001 | 421587-01 | 1 | 1 | 1 | 1 | 1 |
| 16 | Cover - Junction Box | G.S | 420594-01 | 1 | 1 | 1 | 1 | 1 |
| 17 | Conduit | - | 429313-02 | 1 | 1 | 1 | 1 | 1 |
| 18 | Conduit | - | 429313-01 | 2 | 2 | 2 | 2 | 2 |
| 19 | Side Panel (Right) | S.S | 318332G01 | 1 | 1 | 1 | 1 | 1 |
| 20 | Side Panel (Left) | S.S | 315748G02 | 1 | 1 | 1 | 1 | 1 |
| 21 | Rear Panel | G.S | 318331G02 | 1 | 1 | 1 | 1 | 1 |
| 22 | Bushing | SB-437-5 | 420470-07 | 2 | 1 | 1 | 1 | 1 |
| 23 | Louver (B) | PP | 103121-01 | 2 | 2 | 2 | 2 | 2 |
| 24 | Bracket - Connector | G.S | 438073-01 | 1 | 1 | 1 | 1 | 1 |
| 25 | Air Filter (B) | PP | 208283G01 | 2 | 2 | 2 | 2 | 2 |
| 26 | Tie | CV-150 | 7920-0003 | 1 | 1 | 1 | 1 | 1 |

| MODEL F-1100MAA | | TITLE A. ICE FLAKER ASSY | | | | | | |
|--------------------|-----------------------|-----------------------------|-------------|--------------|-----|-----|--|--|
| INDEX NO. | DESCRIPTION | MATERIAL OR MODEL NUMBER | PART NUMBER | REQ'D NUMBER | | | | |
| | | | | B-2 | C-0 | C-1 | | |
| B | EVAPORATOR ASSY | - | 319958A03 | 1 | 1 | 1 | | |
| C | REFRIGERATION UNIT | - | 104900A01 | - | | | | |
| | | | 104900A02 | 1 | 1 | 1 | | |
| D | WATER CIRCUIT | - | 103078A04 | 1 | 1 | 1 | | |
| E | CONTROL BOX ASSY | - | 214652A01 | 1 | 1 | - | | |
| | | | 214652A04 | | | 1 | | |
| F | BIN SWITCH ASSY | - | 317649A01 | 1 | 1 | 1 | | |
| G | LABEL LOCATION | - | 213149A04 | 1 | 1 | 1 | | |
| H | SPOUT CONTROL ASSY | - | 325071A01 | 1 | 1 | 1 | | |
| 1 | Bracket - Evaporator | G.S | 431735-01 | 1 | 1 | 1 | | |
| 2 | Chute | PE | 315723-01 | 1 | 1 | 1 | | |
| 3 | Packing - Chute | EPDM | 425255-01 | 1 | 1 | 1 | | |
| 4 | "O" Ring | G95 | 7616-G095 | 1 | 1 | 1 | | |
| 5 | Spout | PC | 103932G01 | 1 | 1 | 1 | | |
| 6 | Packing - Spout | EPDM | 315722-01 | 1 | 1 | 1 | | |
| 7 | Thumbscrew | S.S, ABS | 415949G03 | 1 | 1 | 1 | | |
| 8 | Square Washer | Copper | 433537-01 | 1 | 1 | 1 | | |
| 9 | Screw - Grounding | Brass | 433304-01 | 1 | 1 | 1 | | |
| 10 | Top Panel | S.S | 315750G01 | 1 | - | - | | |
| | | | 315750G02 | | 1 | 1 | | |
| 11 | Front Panel | S.S | 317189-02 | 1 | - | | | |
| | | | 317189-03 | | 1 | 1 | | |
| 12 | Frame | G.S | 315778G10 | 1 | 1 | 1 | | |
| 13 | Drip Pan | S.S | 317168G01 | 1 | 1 | 1 | | |
| 14 | Washer | PVC | 422916-01 | 3 | 3 | 3 | | |
| 15 | Junction Box | No.6001 | 421587-01 | 1 | 1 | 1 | | |
| 16 | Cover - Junction Box | G.S | 420594-01 | 1 | 1 | 1 | | |
| 17 | Conduit | - | 429313-02 | 1 | 1 | 1 | | |
| 18 | Conduit | - | 429313-01 | 2 | 2 | 2 | | |
| 19 | Side Panel (Right) | S.S | 318332G01 | 1 | - | | | |
| | | | 318332G02 | | 1 | 1 | | |
| 20 | Side Panel (Left) | S.S | 315748G02 | 1 | - | | | |
| | | | 315748G02 | | 1 | 1 | | |
| 21 | Rear Panel | G.S | 318331G02 | 1 | 1 | 1 | | |
| 22 | Bushing | SB-437-5 | 420470-07 | 2 | 1 | 1 | | |
| 23 | Louver (B) | PP | 103121-01 | 2 | 2 | 2 | | |
| 24 | Bracket - Connector | G.S | 438073-01 | 1 | 1 | 1 | | |
| 25 | Air Filter (B) | PP | 208283G01 | 2 | 2 | 2 | | |
| 26 | Tie | CV-150 | 7920-0003 | 1 | 1 | 1 | | |
| 27 | Collar | Steel | 430335-01 | 6 | 6 | 6 | | |
| 28 | Bushing | SR-30-1 | 420472-03 | 1 | 1 | 1 | | |
| 29 | Ring | PA | 431736-01 | 1 | 1 | 1 | | |
| 30 | Strap | G.S | 431737-01 | 1 | 1 | 1 | | |
| 31 | Fitting - Conduit | NS-1621 | 435753-01 | 6 | 6 | 6 | | |
| 32 | Nut | t3.6 | 435753F01 | 6 | 6 | 6 | | |
| 33 | Tapping Screw - Black | Steel | 433954-01 | 2 | 2 | 2 | | |

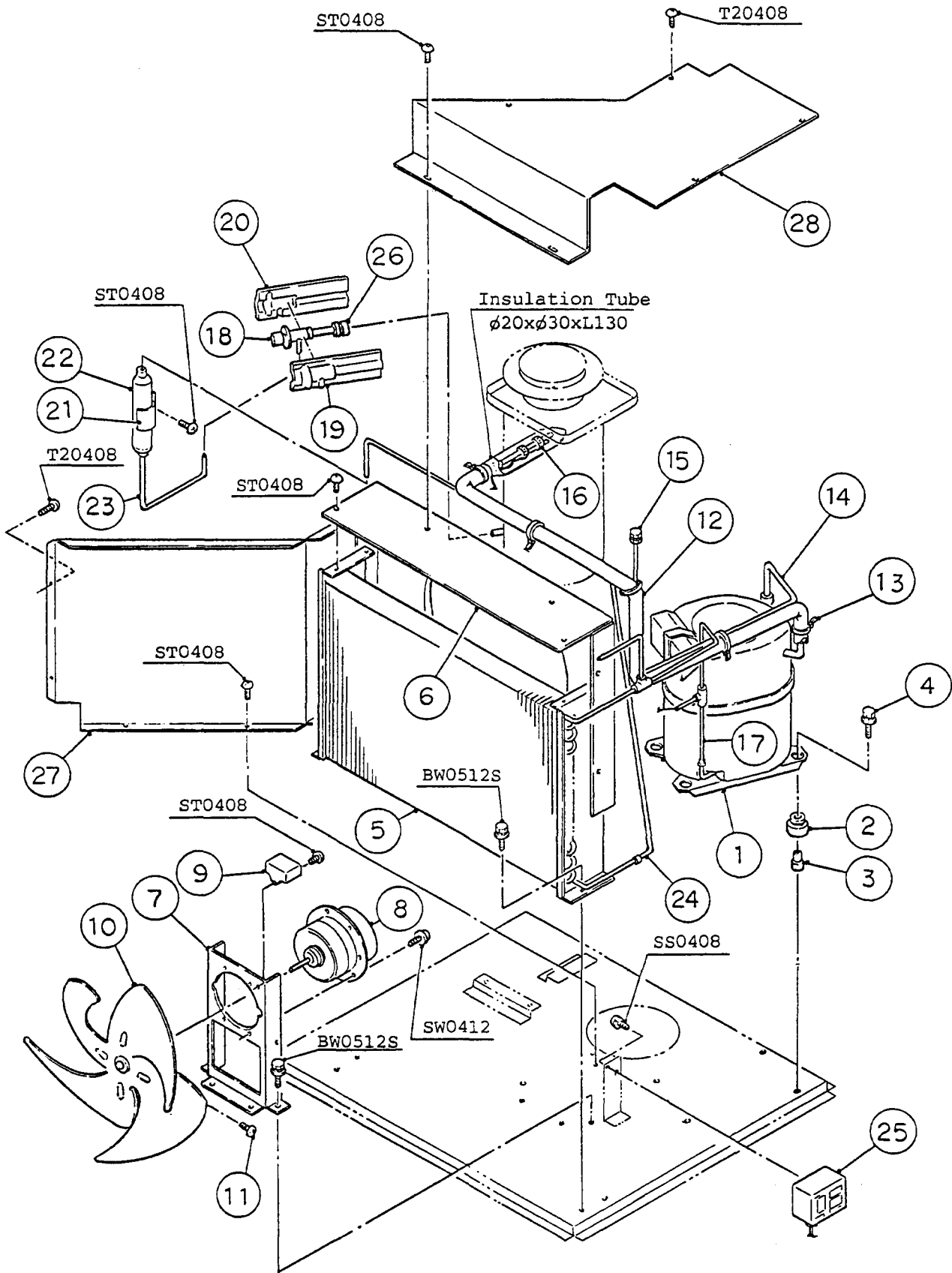
HA

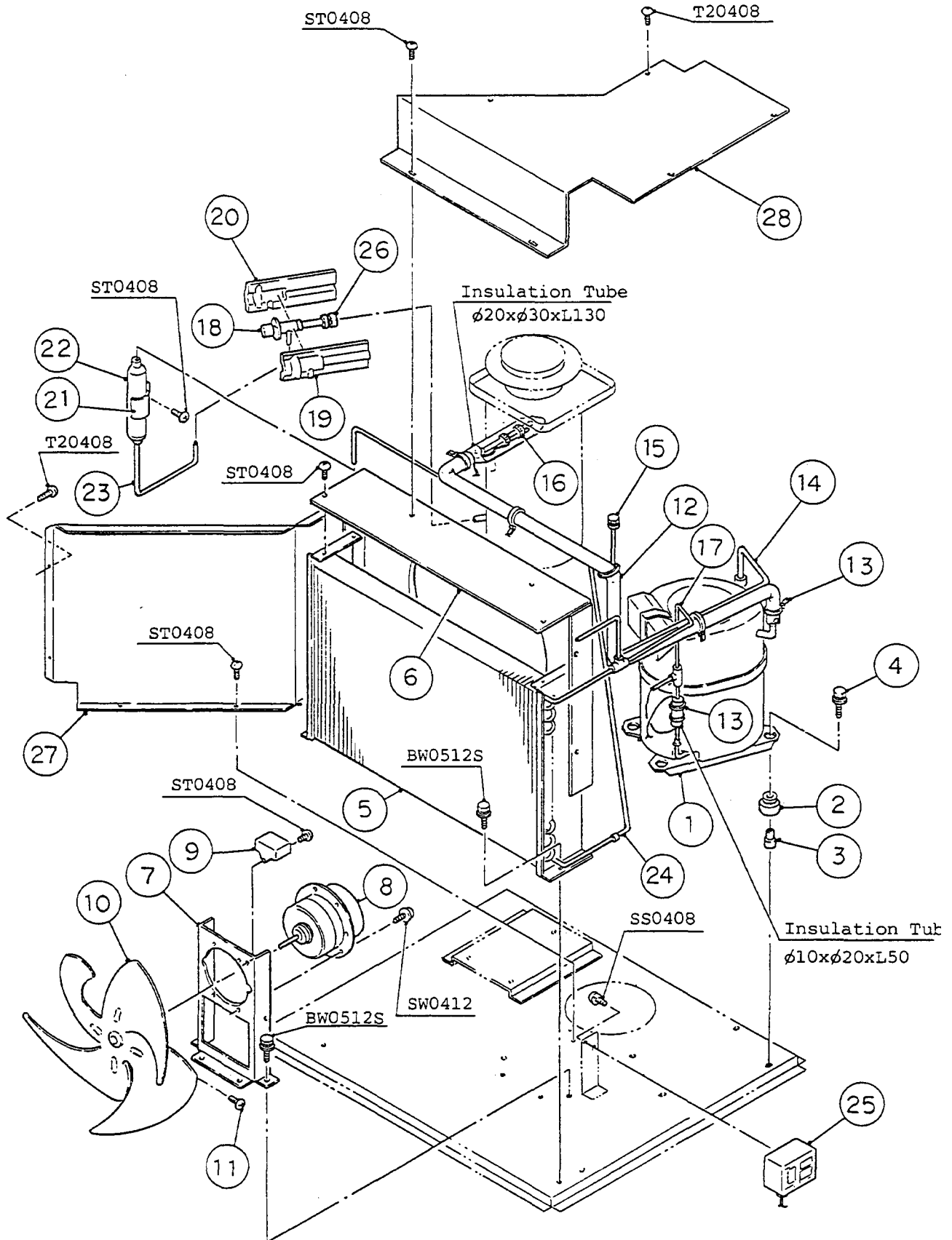
| MODEL | | TITLE | | | | | | |
|-----------|-----------------------|--------------------------|---------------------------|--------------|-----|-----|-----|-----|
| F-1100MAA | | A. ICE FLAKER ASSY | | | | | | |
| INDEX NO. | DESCRIPTION | MATERIAL OR MODEL NUMBER | PART NUMBER | REQ'D NUMBER | | | | |
| | | | | K-1 | K-2 | A-0 | B-0 | B-1 |
| 27 | Collar | Steel | 430335-01 | 6 | 6 | 6 | 6 | 6 |
| 28 | Bushi ng | SR-30-1 | 420472-03 | 1 | 1 | 1 | 1 | 1 |
| 29 | Ring | PA | 431736-01 | 1 | 1 | 1 | 1 | 1 |
| 30 | Strap | G.S | 431737-01 | 1 | 1 | 1 | 1 | 1 |
| 31 | Fitting - Conduit | NS-1621 | 435753-01 | 6 | 6 | 6 | 6 | 6 |
| 32 | Nut | t3.6 | 435753F01 | 6 | 6 | 6 | 6 | 6 |
| 33 | Tapping Screw - Black | Steel | 433954-01 | 2 | 2 | 2 | 2 | 2 |

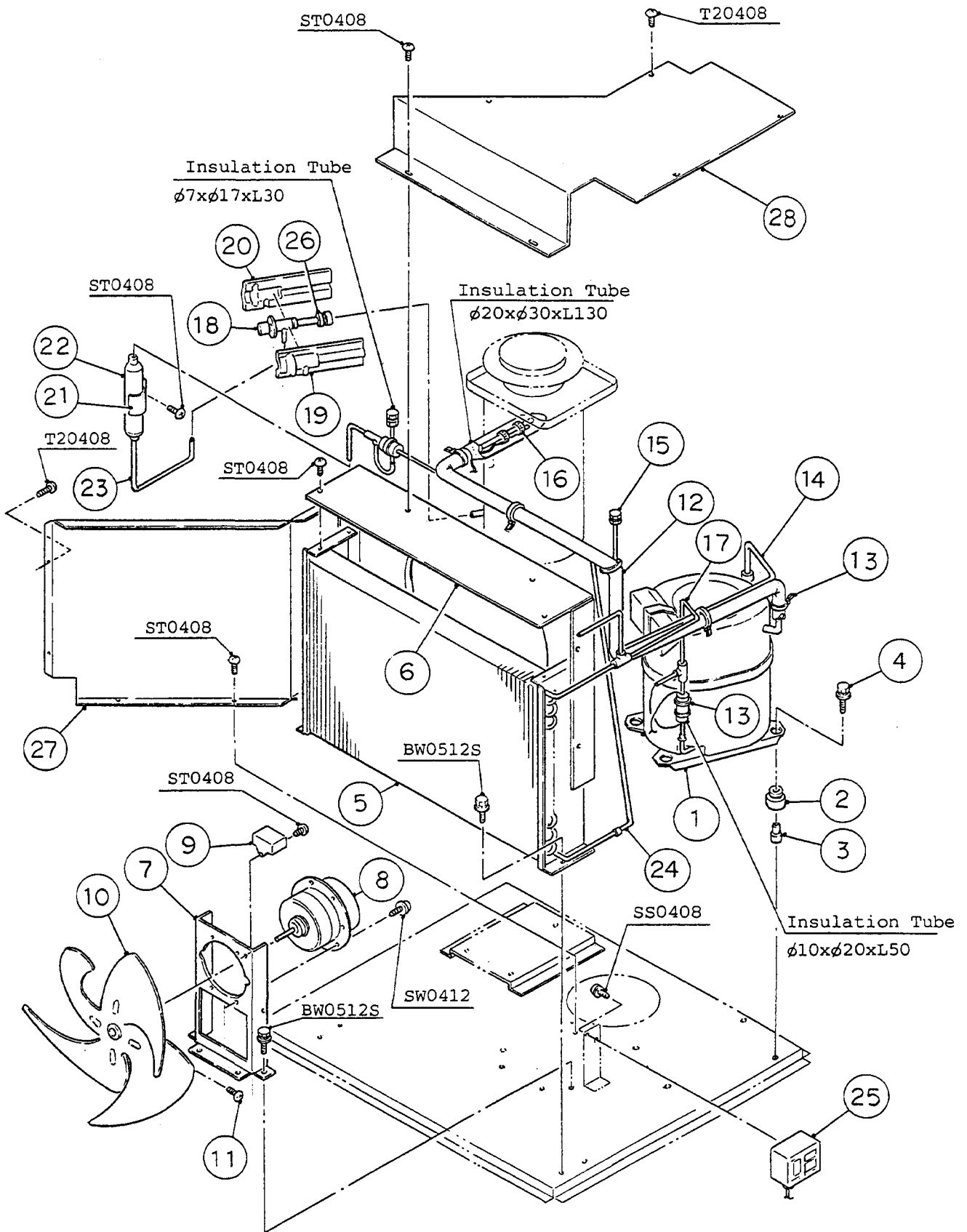


HA

| MODEL | | TITLE | | | | | | | | | |
|-----------|-----------------------|--------------------------|-------------|--------------|-----|-----|-----|-----|-----|-----|-----|
| F-1100HAA | | B. EVAPORATOR ASSY | | | | | | | | | |
| INDEX NO. | DESCRIPTION | MATERIAL OR MODEL NUMBER | PART NUMBER | REQ'D NUMBER | | | | | | | |
| | | | | K-1 | K-2 | A-0 | B-0 | B-1 | B-2 | C-0 | C-1 |
| 1 | Bearing (Lower) | - | 315732G02 | 1 | 1 | 1 | 1 | 1 | 1 | 1 | 1 |
| 2 | "O" Ring | G90 | 7616-G090 | 1 | 1 | 1 | 1 | 1 | 1 | 1 | 1 |
| 3 | Mechanical Seal | HK9A-MN | 432493-01 | 1 | 1 | 1 | 1 | 1 | 1 | 1 | 1 |
| 4 | Auger | S.S | 211062G01 | 1 | 1 | 1 | 1 | 1 | 1 | 1 | 1 |
| 5 | Evaporator | - | 425273G04 | 1 | 1 | 1 | 1 | 1 | 1 | 1 | 1 |
| 6 | Extruding Head | S.S | 208117G02 | 1 | 1 | 1 | 1 | 1 | 1 | 1 | 1 |
| 7 | Washer | S.S | 425277-01 | 3 | 3 | 3 | 3 | 3 | 3 | 3 | 3 |
| 8 | Cutter | S.S | 315734-01 | 1 | 1 | 1 | 1 | 1 | 1 | 1 | 1 |
| 9 | Socket Head Cap Screw | S.S, M10 | 429121-02 | 3 | 3 | 3 | 3 | 3 | 3 | 3 | 3 |
| 10 | Gear Motor | MGZ2200UL-160 | 432068-01 | 1 | 1 | 1 | 1 | 1 | 1 | 1 | 1 |
| 11 | Cover - Gear Motor | G.S | 431532-01 | 1 | 1 | 1 | 1 | 1 | 1 | 1 | 1 |

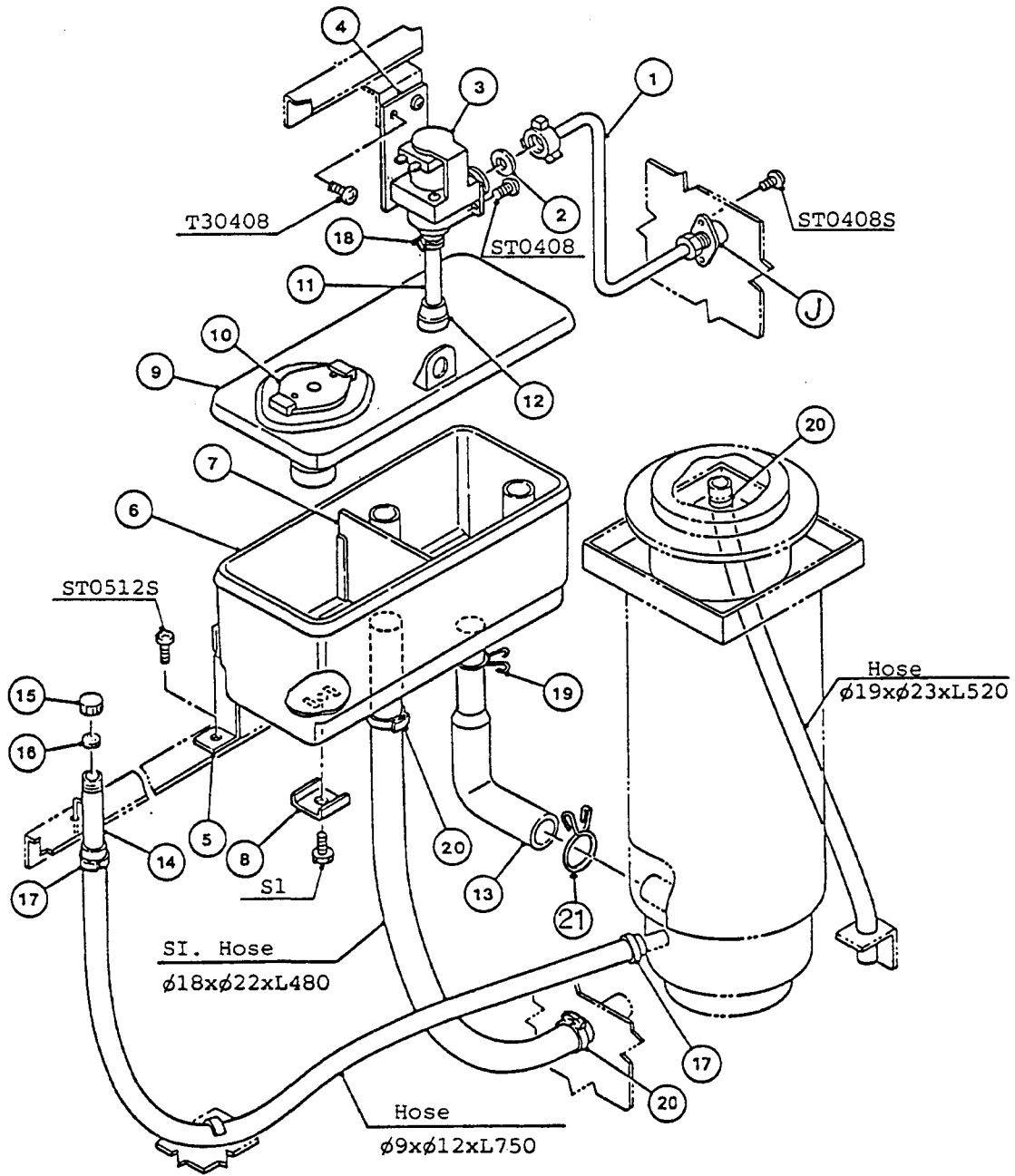






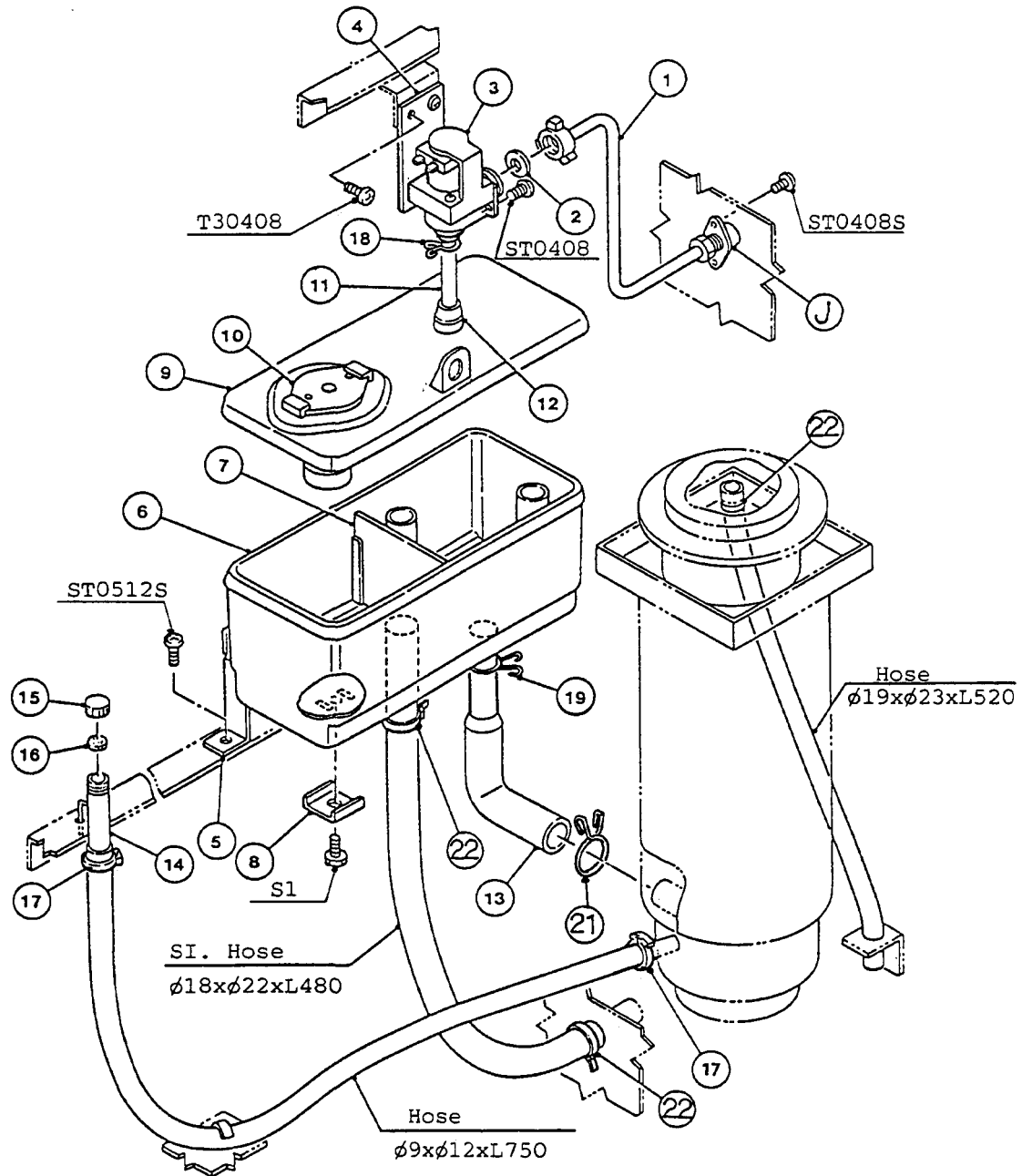
| MODEL | | TITLE | | | | | | |
|-----------|-----------------------------|--------------------------|-------------|--------------|-----|-----|-----|-----|
| F-1100HAA | | C. REFRIGERATION UNIT | | | | | | |
| INDEX NO. | DESCRIPTION | MATERIAL OR MODEL NUMBER | PART NUMBER | REQ'D NUMBER | | | | |
| | | | | K-1 | K-2 | A-0 | B-0 | B-1 |
| 1 | Compressor | REK3-0125-PFV | 434209-01 | 1 | 1 | 1 | 1 | 1 |
| 2 | Grommet | 527-0039-04 | 434403-01 | 4 | 4 | 4 | 4 | 4 |
| 3 | Spacer | 527-0039-04 | 434404-01 | 4 | 4 | 4 | 4 | 4 |
| 4 | Bolt | M8x50 | 436206-01 | 4 | 4 | 4 | 4 | 4 |
| 5 | Condenser - Air-cooled | - | 206032-01 | 1 | 1 | 1 | 1 | 1 |
| 6 | Shroud | G.S | 209568-02 | 1 | 1 | 1 | 1 | 1 |
| 7 | Bracket - Fan Motor | G.S | 320478-01 | 1 | 1 | 1 | 1 | 1 |
| 8 | Fan Motor | EP-TZ56(A) | 2U0090-02 | 1 | 1 | 1 | 1 | 1 |
| 9 | Capacitor - Fan Motor | 6 m F 220V | 431928-01 | 1 | 1 | 1 | 1 | 1 |
| 10 | Fan Blade | FW-30PHL | 417068-01 | 1 | 1 | 1 | 1 | 1 |
| 11 | Screw - Fan Blade | M6 | 417068F01 | 1 | 1 | 1 | 1 | 1 |
| 12 | Copper Tube - Low Side | Copper | 324931G01 | 1 | 1 | 1 | 1 | 1 |
| 13 | Tie | CV-150 | 7920-0003 | 7 | 9 | 9 | 9 | 9 |
| 14 | Copper Tube - Access Valve | Copper | 324934-01 | 1 | 1 | 1 | 1 | 1 |
| 15 | Access Valve | TCJ-2F15-HD | 417366-01 | 1 | 1 | 1 | 1 | 1 |
| 16 | Clamp | D11-S | 435254-04 | 2 | 2 | 2 | 2 | 2 |
| 17 | Copper Tube - High Side | Copper | 324930G01 | 1 | 1 | 1 | 1 | 1 |
| 18 | Expansion Valve | HFE-10RHD-3 | 433534-03 | 1 | 1 | 1 | 1 | 1 |
| 19 | Cover (A) - EXPV. | PE | 324313-01 | 1 | 1 | 1 | 1 | 1 |
| 20 | Cover (B) - EXPV. | PE | 324313-02 | 1 | 1 | 1 | 1 | 1 |
| 21 | Strap | G.S | 425280-02 | 1 | 1 | 1 | 1 | 1 |
| 22 | Drier | KC-6749 | 427061-01 | 1 | 1 | 1 | 1 | 1 |
| 23 | Copper Tube (J) - High Side | Copper | 425286-03 | 1 | 1 | 1 | 1 | 1 |
| 24 | Copper Tube (F) - High Side | Copper | 324932-01 | 1 | 1 | 1 | 1 | 1 |
| 25 | Pressure Switch | SNS-2C130YQ3 | 425679-01 | 1 | 1 | 1 | 1 | 1 |
| 26 | Socket | Copper | 436578-01 | 1 | 1 | 1 | 1 | 1 |
| 27 | Partition (A) | G.S | 318284-01 | 1 | 1 | 1 | 1 | 1 |
| 28 | Partition (B) | G.S | 324933-01 | 1 | 1 | 1 | 1 | 1 |

| MODEL | | TITLE | | | | | | | |
|-----------|-----------------------------|--------------------------|-------------|--------------|-----|-----|--|--|--|
| F-1100MAA | | C. REFRIGERATION UNIT | | | | | | | |
| INDEX NO. | DESCRIPTION | MATERIAL OR MODEL NUMBER | PART NUMBER | REQ'D NUMBER | | | | | |
| | | | | B-2 | C-0 | C-1 | | | |
| 1 | Compressor | REK3-0125-PFV | 434209-01 | 1 | 1 | 1 | | | |
| 2 | Grommet | 527-0039-04 | 434403-01 | 4 | 4 | 4 | | | |
| 3 | Spacer | 527-0039-04 | 434404-01 | 4 | 4 | 4 | | | |
| 4 | Bolt | M8x50 | 436206-01 | 4 | 4 | 4 | | | |
| 5 | Condenser - Air-cooled | - | 206032-01 | 1 | 1 | 1 | | | |
| 6 | Shroud | G.S | 209568-02 | 1 | 1 | 1 | | | |
| 7 | Bracket - Fan Motor | G.S | 320478-01 | 1 | 1 | 1 | | | |
| 8 | Fan Motor | EP-TZ56(A) | 2U0090-02 | 1 | 1 | 1 | | | |
| 9 | Capacitor - Fan Motor | 6 m F 220V | 431928-01 | 1 | 1 | 1 | | | |
| 10 | Fan Blade | FW-30PHL | 417068-01 | 1 | 1 | 1 | | | |
| 11 | Screw - Fan Blade | M6 | 417068F01 | 1 | 1 | 1 | | | |
| 12 | Copper Tube - Low Side | Copper | 324931G01 | 1 | 1 | 1 | | | |
| 13 | Tie | CV-150 | 7920-0003 | 9 | 9 | 9 | | | |
| 14 | Copper Tube - Access Valve | Copper | 324934-01 | 1 | 1 | 1 | | | |
| 15 | Access Valve | TCJ-2F15-HD | 417366-01 | 1 | 1 | 1 | | | |
| 16 | Clamp | D11-S | 435254-04 | 2 | 2 | 2 | | | |
| 17 | Copper Tube - High Side | Copper | 324930G01 | 1 | 1 | 1 | | | |
| 18 | Expansion Valve | HFE-10RHD-3 | 433534-03 | 1 | 1 | 1 | | | |
| 19 | Cover (A) - EXPV. | PE | 324313-01 | 1 | 1 | 1 | | | |
| 20 | Cover (B) - EXPV. | PE | 324313-02 | 1 | 1 | 1 | | | |
| 21 | Strap | G.S | 425280-02 | 1 | 1 | 1 | | | |
| 22 | Drier - | KC-6749 | 427061-01 | 1 | 1 | 1 | | | |
| 23 | Copper Tube (J) - High Side | Copper | 425286-03 | 1 | 1 | 1 | | | |
| 24 | Copper Tube (F) - High Side | Copper | 324932-01 | - | | | | | |
| | | | 219018G01 | 1 | 1 | 1 | | | |
| 25 | Pressure Switch | SNS-2C130YQ3 | 425679-01 | 1 | 1 | 1 | | | |
| 26 | Socket | Copper | 436578-01 | 1 | 1 | 1 | | | |
| 27 | Partition (A) | G.S | 318284-01 | 1 | 1 | 1 | | | |
| 28 | Partition (B) | G.S | 324933-01 | 1 | 1 | 1 | | | |



FASTENER

S1 - Thumbscrew, M4x6

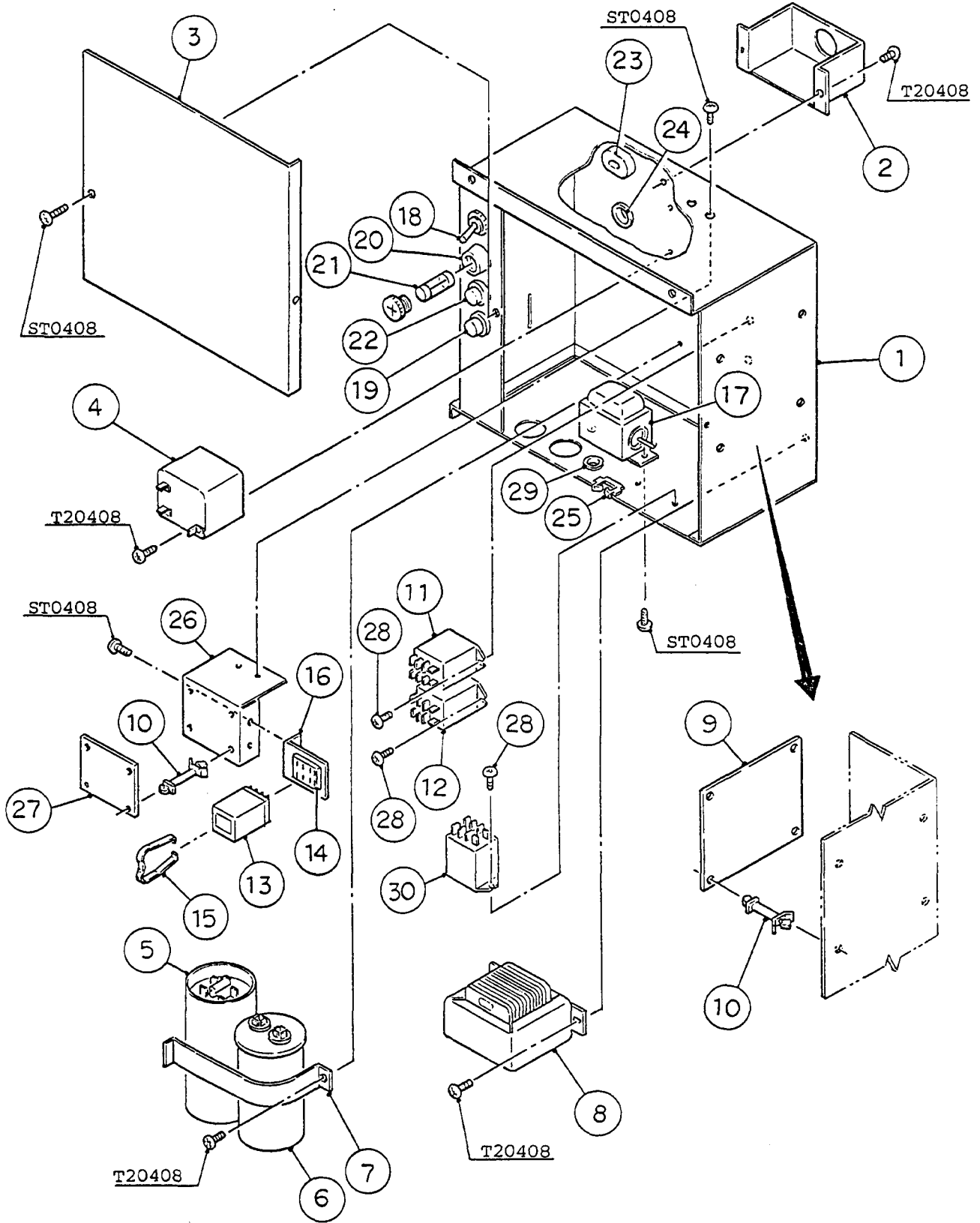


FASTENER

S1 - Thumbscrew, M4x6

| MODEL | | TITLE | | | | | | |
|-----------|-------------------------|--------------------------|-------------|--------------|-----|-----|-----|-----|
| F-1100MAA | | D. WATER CIRCUIT | | | | | | |
| INDEX NO. | DESCRIPTION | MATERIAL OR MODEL NUMBER | PART NUMBER | REQ'D NUMBER | | | | |
| | | | | K-1 | K-2 | A-0 | B-0 | B-1 |
| J | FITTING (K) ASSY | (S-0331) | 310978A01 | 1 | 1 | 1 | 1 | 1 |
| 1 | Pipe - Water Supply | S.S | 425287G01 | 1 | 1 | 1 | 1 | 1 |
| 2 | Packing | NBR | 413854-03 | 1 | 1 | 1 | 1 | 1 |
| 3 | Water Valve | J246-086 | 3U0065-01 | 1 | 1 | 1 | 1 | 1 |
| 4 | Bracket - Water Valve | G.S | 425288-01 | 1 | 1 | 1 | 1 | 1 |
| 5 | Bracket - Reservoir | G.S | 315744-01 | 1 | 1 | 1 | 1 | 1 |
| 6 | Reservoir | ABS | 208125-02 | 1 | 1 | 1 | 1 | 1 |
| 7 | Separator - Reservoir | ABS | 423538-02 | 1 | 1 | 1 | 1 | 1 |
| 8 | Collar | S.S | 423416-01 | 1 | 1 | 1 | 1 | 1 |
| 9 | Cover - Reservoir | ABS | 208126-02 | 1 | 1 | 1 | 1 | 1 |
| 10 | Float Switch | TW-1221-101 | 435490-01 | 1 | 1 | 1 | 1 | 1 |
| 11 | Hose - Water Supply | EVA | 425289-01 | 1 | 1 | 1 | 1 | 1 |
| 12 | Cover - Reservoir Inlet | SI.R | 415094-01 | 1 | 1 | 1 | 1 | 1 |
| 13 | Hose - Water Supply | EPDH | 428615-05 | 1 | 1 | 1 | 1 | 1 |
| 14 | Pipe - Drain | S.S | 425292G01 | 1 | 1 | 1 | 1 | 1 |
| 15 | Cap - Drain | Brass | 425293-01 | 1 | 1 | 1 | 1 | 1 |
| 16 | Packing - Drain | Sy.R | 425294-01 | 1 | 1 | 1 | 1 | 1 |
| 17 | Clamp | MH-30N | 421642-04 | 2 | 2 | 2 | 2 | 2 |
| 18 | Clamp | MH-44N | 421642-07 | 1 | - | | | |
| | | SK-17 | 435934-05 | | 1 | 1 | 1 | 1 |
| 19 | Clamp | SK-18.3 | 435934-06 | 1 | 1 | 1 | 1 | 1 |
| 20 | Clamp | HH-56N | 421642-09 | 3 | - | | | |
| 21 | Clamp | SK-25 | 435934-07 | 1 | 1 | 1 | 1 | 1 |
| 22 | Tie | CV-150 | 7920-0003 | | 3 | 3 | 3 | 3 |

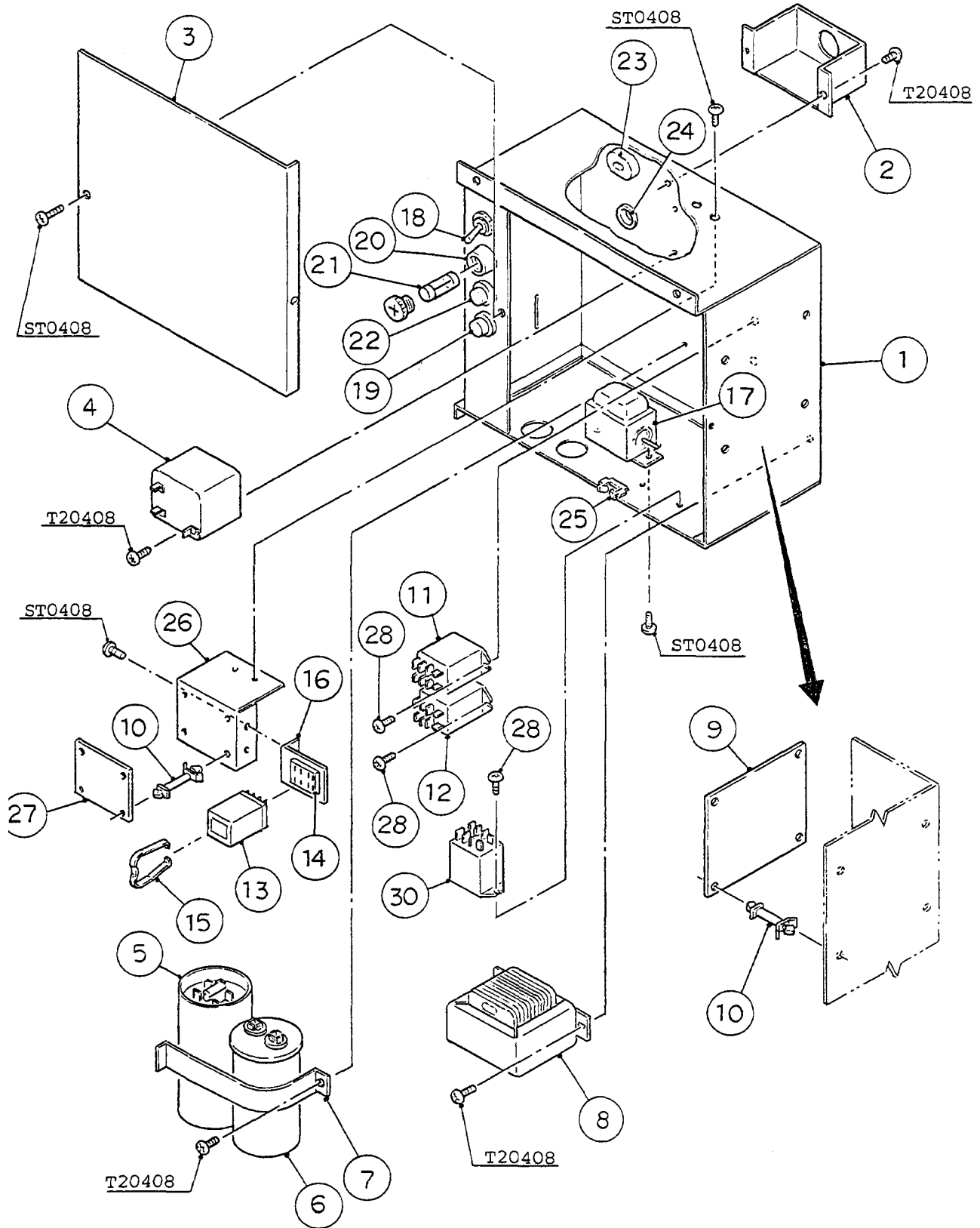
| MODEL | | TITLE | | | | | | |
|-----------|-------------------------|--------------------------|-------------|--------------|-----|-----|--|--|
| F-1100HAA | | D. WATER CIRCUIT | | | | | | |
| INDEX NO. | DESCRIPTION | MATERIAL OR MODEL NUMBER | PART NUMBER | REQ'D NUMBER | | | | |
| | | | | B-2 | C-0 | C-1 | | |
| J | FITTING (K) ASSY | (S-0331) | 310978A01 | 1 | 1 | 1 | | |
| 1 | Pipe - Water Supply | S.S | 425287G01 | 1 | 1 | 1 | | |
| 2 | Packing | NBR | 413854-03 | 1 | 1 | 1 | | |
| 3 | Water Valve | J246-086 | 3U0065-01 | 1 | 1 | 1 | | |
| 4 | Bracket - Water Valve | G.S | 425288-01 | 1 | 1 | 1 | | |
| 5 | Bracket - Reservoir | G.S | 315744-01 | 1 | 1 | 1 | | |
| 6 | Reservoir | ABS | 208125-02 | 1 | 1 | 1 | | |
| 7 | Separator - Reservoir | ABS | 423538-02 | 1 | 1 | 1 | | |
| 8 | Collar | S.S | 423416-01 | 1 | 1 | 1 | | |
| 9 | Cover - Reservoir | ABS | 208126-02 | 1 | 1 | 1 | | |
| 10 | Float Switch | TW-1221-101 | 435490-01 | 1 | 1 | 1 | | |
| 11 | Hose - Water Supply | EVA | 425289-01 | 1 | 1 | 1 | | |
| 12 | Cover - Reservoir Inlet | SI.R | 415094-01 | 1 | 1 | 1 | | |
| 13 | Hose - Water Supply | EPDH | 428615-05 | 1 | 1 | 1 | | |
| 14 | Pipe - Drain | S.S | 425292G01 | 1 | 1 | 1 | | |
| 15 | Cap - Drain | Brass | 425293-01 | 1 | 1 | 1 | | |
| 16 | Packing - Drain | Sy.R | 425294-01 | 1 | 1 | 1 | | |
| 17 | Clamp | MH-30N | 421642-04 | 2 | 2 | 2 | | |
| 18 | Clamp | SK-17 | 435934-05 | 1 | 1 | 1 | | |
| 19 | Clamp | SK-18.3 | 435934-06 | 1 | 1 | 1 | | |
| 20 | - | - | - | - | | | | |
| 21 | Clamp | SK-25 | 435934-07 | 1 | 1 | 1 | | |
| 22 | Tie | CV-150 | 7920-0003 | 3 | 3 | 3 | | |



HA
F-1100MAA

E. CONTROL BOX ASSY

(C-1)
(B-1)(B-2)(C-0)
(K-2)(A-0)(B-0)



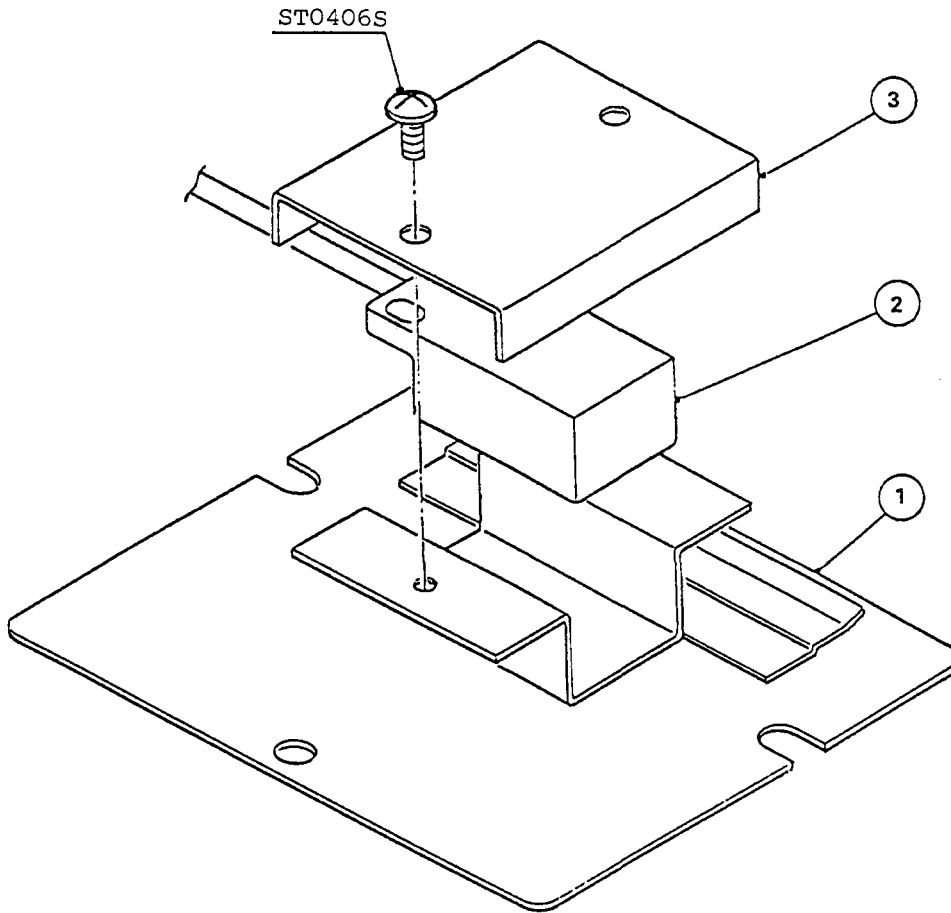
| MODEL | | TITLE | | | | | | | |
|-----------|-----------------------|--------------------------|-------------|--------------|-----|-----|-----|-----|--|
| F-1100MAA | | E. CONTROL BOX ASSY | | | | | | | |
| INDEX NO. | DESCRIPTION | MATERIAL OR MODEL NUMBER | PART NUMBER | REQ'D NUMBER | | | | | |
| | | | | K-1 | K-2 | A-0 | B-0 | B-1 | |
| 1 | Control Box | G.S | 315746G07 | 1 | 1 | 1 | 1 | 1 | |
| 2 | Cover - Connector | G.S | 425302-01 | 1 | 1 | 1 | 1 | 1 | |
| 3 | Cover - Control Box | G.S | 425301-01 | 1 | 1 | 1 | 1 | 1 | |
| 4 | Starter | 040-0001-26 | 434172-01 | 1 | 1 | 1 | 1 | 1 | |
| 5 | Start Capacitor | 014-0008-78 | 434171-02 | 1 | 1 | 1 | 1 | 1 | |
| 6 | Run Capacitor | 014-0037-09 | 434170-01 | 1 | 1 | 1 | 1 | 1 | |
| 7 | Strap - Capacitor | G.S | 431394-03 | 1 | 1 | 1 | 1 | 1 | |
| 8 | Transformer | TR5268 | 2U0041-01 | 1 | 1 | 1 | 1 | 1 | |
| 9 | Timer Board | H2AA144C01 | 437305-01 | 1 | 1 | 1 | 1 | 1 | |
| 10 | Board Support | KGLS-6S | 414929-01 | 8 | 8 | 8 | 8 | 8 | |
| 11 | Relay | LY1F | 418271-04 | 1 | 1 | 1 | 1 | 1 | |
| 12 | Relay | LY2ZF | 406132-06 | 1 | 1 | 1 | 1 | 1 | |
| 13 | Keep Relay | HY2K-HO | 418524-03 | 1 | 1 | 1 | 1 | 1 | |
| 14 | Socket - Relay | PY-14 | 408328-02 | 1 | 1 | 1 | 1 | 1 | |
| 15 | Clamp - Relay | PYC-P | 411353-01 | 1 | 1 | 1 | 1 | 1 | |
| 16 | Bracket - Relay | G.S | 425300-01 | 1 | 1 | 1 | 1 | 1 | |
| 17 | Thermostat | A10-9756 | 420465-01 | 1 | 1 | 1 | 1 | 1 | |
| 18 | Toggle Switch | S-821 | 438030-01 | 1 | 1 | 1 | 1 | 1 | |
| 19 | Push Button Switch | SB-4011N/OT3959 | 420466-01 | 1 | 1 | 1 | 1 | 1 | |
| 20 | Fuse Holder | FH032 | 424288-01 | 1 | 1 | 1 | 1 | 1 | |
| 21 | Fuse | FGAO-2 1A | 420468-03 | 1 | 1 | 1 | 1 | 1 | |
| 22 | Overload - Gear Motor | W58xBIA4A-2 | 425201-01 | 1 | 1 | 1 | 1 | 1 | |
| 23 | Bushing | SR-7P-2 | 420472-07 | 1 | 1 | 1 | 1 | 1 | |
| 24 | Bushing | SB-625-8 | 420470-01 | 1 | 1 | 1 | 1 | 1 | |
| 25 | Edge Saddle | EDS-1 | 421552-01 | 1 | 1 | 1 | 1 | 1 | |
| 26 | Beeper Bracket | G.S | 323312-01 | 1 | 1 | 1 | 1 | 1 | |
| 27 | Beeper | - | 435937-01 | 1 | 1 | 1 | 1 | 1 | |
| 28 | Tapping Screw | 3x8 | 431415-01 | 6 | 6 | 6 | 6 | 6 | |
| 29 | Bushing | SB-437-5 | 420470-07 | 1 | - | | | | |
| 30 | Relay | LY2F | 406132-08 | 1 | 1 | 1 | 1 | 1 | |

| MODEL | | TITLE | | | | | | |
|-----------|-----------------------|--------------------------|-------------|--------------|-----|-----|--|--|
| F-1100MAA | | E. CONTROL BOX ASSY | | | | | | |
| INDEX NO. | DESCRIPTION | MATERIAL OR MODEL NUMBER | PART NUMBER | REQ'D NUMBER | | | | |
| | | | | B-2 | C-0 | C-1 | | |
| 1 | Control Box | G.S | 315746G07 | 1 | 1 | 1 | | |
| 2 | Cover - Connector | G.S | 425302-01 | 1 | 1 | 1 | | |
| 3 | Cover - Control Box | G.S | 425301-01 | 1 | 1 | 1 | | |
| 4 | Starter | 040-0001-26 | 434172-01 | 1 | 1 | 1 | | |
| 5 | Start Capacitor | 014-0008-78 | 434171-02 | 1 | 1 | 1 | | |
| 6 | Run Capacitor | 014-0037-09 | 434170-01 | 1 | 1 | - | | |
| | | | 434170-05 | | | 1 | | |
| 7 | Strap - Capacitor | G.S | 431394-03 | 1 | 1 | - | | |
| | | | 431394-01 | | | 1 | | |
| 8 | Transformer | TR5268 | 2U0041-01 | 1 | 1 | 1 | | |
| 9 | Timer Board | H2AA144C01 | 437305-01 | 1 | 1 | 1 | | |
| 10 | Board Support | KGLS-6S | 414929-01 | 8 | 8 | 8 | | |
| 11 | Relay | LY1F | 418271-04 | 1 | 1 | 1 | | |
| 12 | Relay | LY2ZF | 406132-06 | 1 | 1 | 1 | | |
| 13 | Keep Relay | MY2K-HO | 418524-03 | 1 | 1 | 1 | | |
| 14 | Socket - Relay | PY-14 | 408328-02 | 1 | 1 | 1 | | |
| 15 | Clamp - Relay | PYC-P | 411353-01 | 1 | 1 | 1 | | |
| 16 | Bracket - Relay | G.S | 425300-01 | 1 | 1 | 1 | | |
| 17 | Thermostat | A10-9756 | 420465-01 | 1 | 1 | 1 | | |
| 18 | Toggle Switch | S-821 | 438030-01 | 1 | 1 | 1 | | |
| 19 | Push Button Switch | SB-4011N/OT3959 | 420466-01 | 1 | 1 | 1 | | |
| 20 | Fuse Holder | FH032 | 424288-01 | 1 | 1 | 1 | | |
| 21 | Fuse | FGAO-2 1A | 420468-03 | 1 | 1 | 1 | | |
| 22 | Overload - Gear Motor | W58xBIA4A-2 | 425201-01 | 1 | 1 | 1 | | |
| 23 | Bushing | SR-7P-2 | 420472-07 | 1 | 1 | 1 | | |
| 24 | Bushing | SB-625-8 | 420470-01 | 1 | 1 | 1 | | |
| 25 | Edge Saddle | EDS-1 | 421552-01 | 1 | 1 | 1 | | |
| 26 | Beeper Bracket | G.S | 323312-01 | 1 | 1 | 1 | | |
| 27 | Beeper | - | 435937-01 | 1 | 1 | 1 | | |
| 28 | Tapping Screw | 3x8 | 431415-01 | 6 | 6 | 6 | | |
| 29 | - | - | - | - | | | | |
| 30 | Relay | LY2F | 406132-08 | 1 | 1 | 1 | | |

HA
F-1100MAA

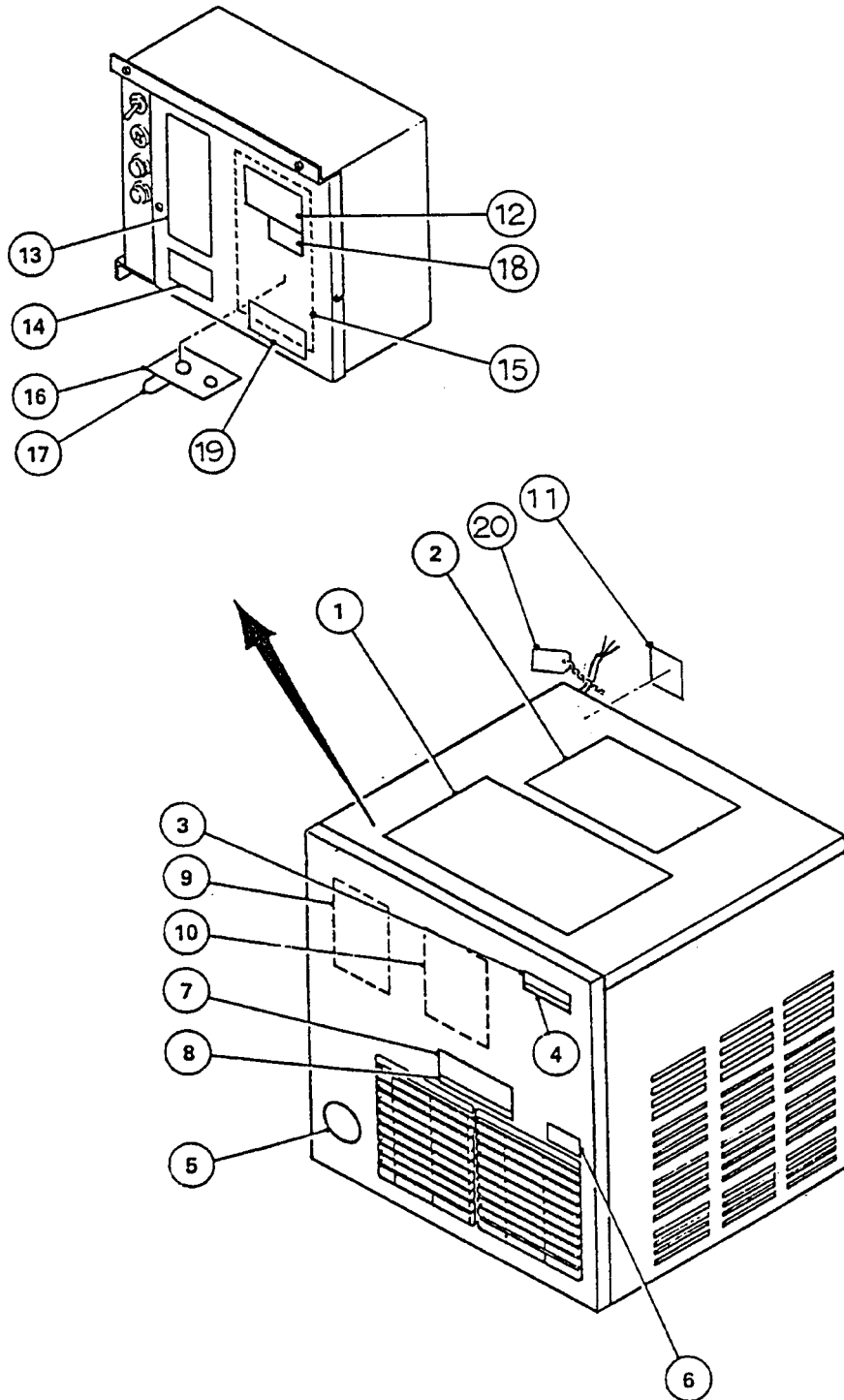
F. BIN SWITCH ASSY

(C-0)(C-1)
(B-0)(B-1)(B-2)
(K-1)(K-2)(A-0)



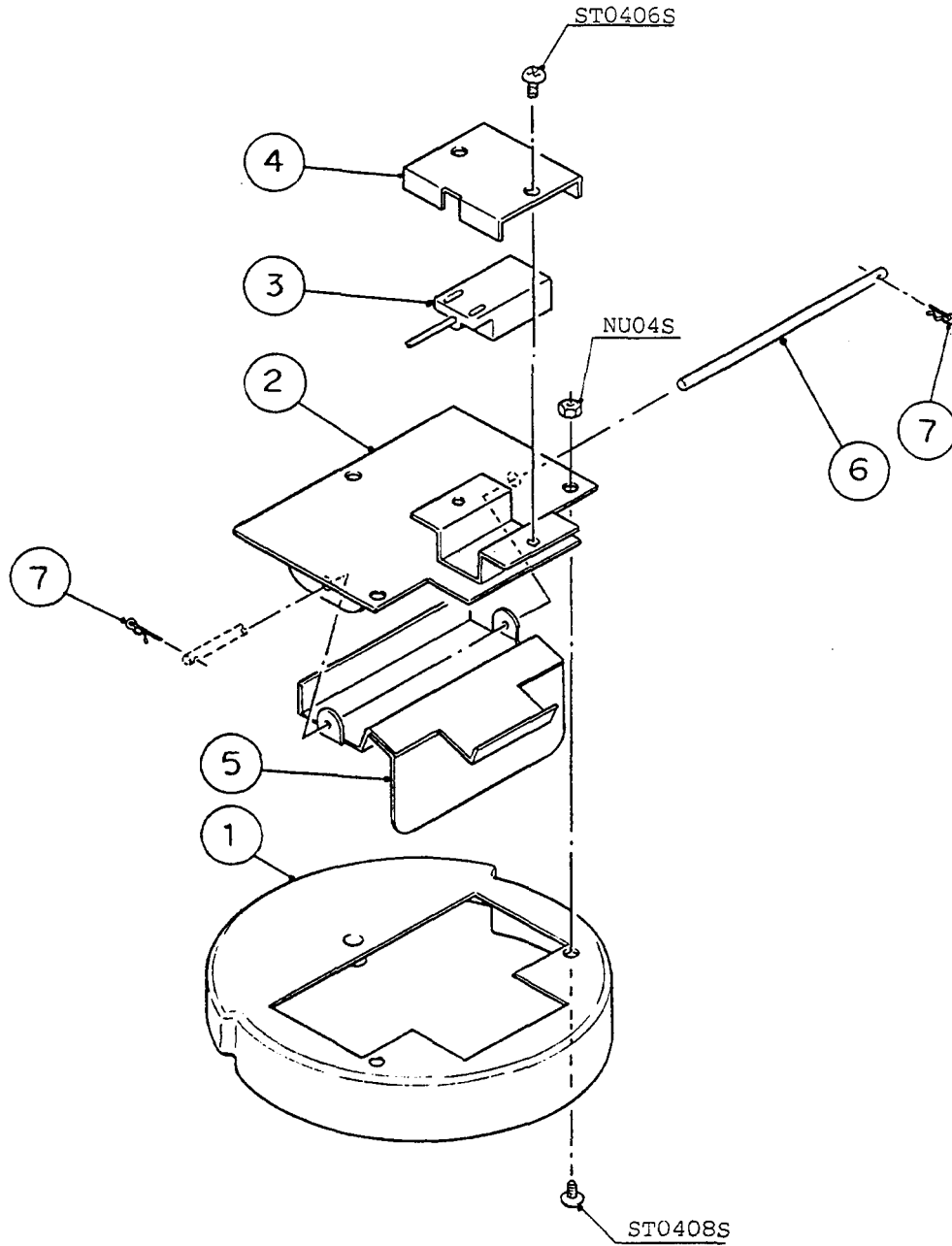
HA

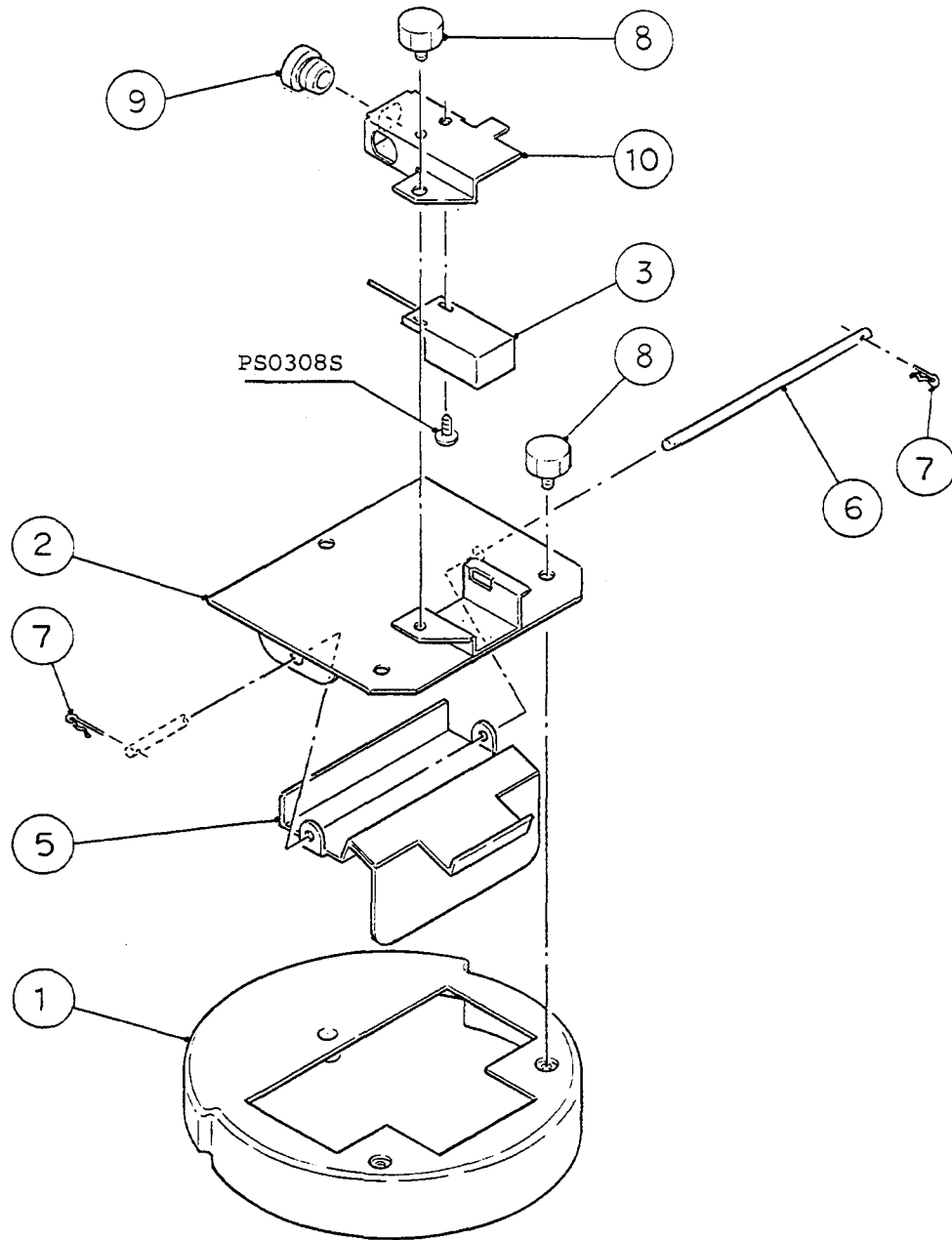
| MODEL | | TITLE | | | | | | | | | | |
|-----------|--------------------------------|--------------------------|-------------|--------------|-----|-----|-----|-----|-----|-----|-----|---|
| F-1100MAA | | F. BIN SWITCH ASSY | | | | | | | | | | |
| INDEX NO. | DESCRIPTION | MATERIAL OR MODEL NUMBER | PART NUMBER | REQ'D NUMBER | | | | | | | | |
| | | | | K-1 | K-2 | A-0 | B-0 | B-1 | B-2 | C-0 | C-1 | |
| 1 | Bracket - Switch | S.S. | 317648G01 | 1 | 1 | 1 | 1 | 1 | 1 | 1 | 1 | 1 |
| 2 | Proximity Switch - Bin Control | RS-601 | 427223-01 | 1 | 1 | 1 | 1 | 1 | 1 | 1 | 1 | 1 |
| 3 | Bracket - Proximity Switch | S.S | 427158-01 | 1 | 1 | 1 | 1 | 1 | 1 | 1 | 1 | 1 |



| MODEL | | TITLE | | | | | | |
|-----------|---|--------------------------|-------------|--------------|-----|-----|-----|-----|
| F-1100HAA | | G. LABEL LOCATION | | | | | | |
| INDEX NO. | DESCRIPTION | MATERIAL OR MODEL NUMBER | PART NUMBER | REQ'D NUMBER | | | | |
| | | | | K-1 | K-2 | A-0 | B-0 | B-1 |
| 1 | Instruction Sheet - Inst. Ope. | Paper | 208144-01 | 1 | 1 | 1 | 1 | 1 |
| 2 | Instruction Sheet - Bin Inst. | Paper | 208145-01 | 1 | 1 | 1 | 1 | 1 |
| 3 | Emblem (L) - HOSHIZAKI | ABS | 418634G01 | 1 | 1 | 1 | 1 | 1 |
| 4 | Label - Model Number | PETP Film | 435985-16 | 1 | 1 | 1 | 1 | 1 |
| 5 | Label - Penguin | PETP Film | 410994-01 | 1 | 1 | 1 | 1 | 1 |
| 6 | Label - Warning Caution Label (F) | PVC Film | 425323-01 | 1 | x1 | | | |
| | | | 439146-01 | | x1 | 1 | 1 | 1 |
| 7 | Label - Operation, Spout Cont. Instruction Label | PETP Film | 425325-01 | 1 | x1 | | | |
| | | | 443470-01 | | o1 | 1 | 1 | 1 |
| 8 | Label - Air Filter | PETP Film | 426177-01 | 1 | 1 | 1 | 1 | 1 |
| 9 | Label - Operation | PVC Film | 315758-01 | 1 | 1 | 1 | 1 | 1 |
| 10 | Label - Cleaning | PVC Film | 214783-01 | 1 | 1 | 1 | 1 | 1 |
| 11 | Nameplate | PES Film | 438060-01 | 1 | 1 | 1 | 1 | 1 |
| 12 | Rating Label | PES Film | 438063-01 | 1 | 1 | 1 | 1 | 1 |
| 13 | Label - Control | PETP Film | 438059-01 | 1 | 1 | 1 | 1 | 1 |
| 14 | Label - Danger Caution Label (C) | PVC Film | 425322-01 | 1 | x1 | | | |
| | | | 439143-01 | | o1 | 1 | 1 | 1 |
| 15 | Wiring Label | PVC Film | 324882-01 | 1 | 1 | 1 | 1 | 1 |
| 16 | Label - Bin Thermostat | PETP Film | 435984-01 | 1 | 1 | 1 | 1 | 1 |
| 17 | Label - Factory Adjusted | PETP Film | 419404-01 | 1 | 1 | 1 | 1 | 1 |
| 18 | Label - R502 | PES Film | 4A0026-01 | 1 | 1 | 1 | 1 | 1 |
| 19 | Warning Label | PVC Film | 435955-01 | 1 | 1 | 1 | 1 | 1 |
| 20 | Tag - Warning: Electrical Connection | Paper | 428430-01 | 1 | 1 | 1 | 1 | 1 |

| MODEL | | TITLE | | | | | | | |
|-----------|---|--------------------------|-------------|--------------|-----|-----|--|--|--|
| F-1100HAA | | G. LABEL LOCATION | | | | | | | |
| INDEX NO. | DESCRIPTION | MATERIAL OR MODEL NUMBER | PART NUMBER | REQ'D NUMBER | | | | | |
| | | | | B-2 | C-0 | C-1 | | | |
| 1 | Instruction Sheet - Inst. Ope. | Paper | 208144-01 | 1 | 1 | 1 | | | |
| 2 | Instruction Sheet - Bin Inst. | Paper | 208145-01 | 1 | 1 | 1 | | | |
| 3 | Emblem (L) - HOSHIZAKI | ABS | 418634G01 | 1 | 1 | 1 | | | |
| 4 | Label - Model Number | PETP Film | 435985-16 | 1 | 1 | 1 | | | |
| 5 | Label - Penguin | PETP Film | 410994-01 | 1 | 1 | 1 | | | |
| 6 | Caution Label (F) | PVC Film | 439146-01 | 1 | 1 | 1 | | | |
| 7 | Instruction Label | PETP Film | 443470-01 | 1 | 1 | 1 | | | |
| 8 | Label - Air Filter | PETP Film | 426177-01 | 1 | 1 | 1 | | | |
| 9 | Label - Operation | PVC Film | 315758-01 | 1 | 1 | 1 | | | |
| 10 | Label - Cleaning | PVC Film | 214783-01 | 1 | 1 | 1 | | | |
| 11 | Nameplate | PES Film | 438060-01 | 1 | 1 | 1 | | | |
| 12 | Rating Label | PES Film | 438063-01 | 1 | 1 | 1 | | | |
| 13 | Label - Control | PETP Film | 438059-01 | 1 | 1 | 1 | | | |
| 14 | Caution Label (C) | PVC Film | 439143-01 | 1 | 1 | 1 | | | |
| 15 | Wiring Label | PVC Film | 324882-01 | 1 | 1 | 1 | | | |
| 16 | Label - Bin Thermostat | PETP Film | 435984-01 | 1 | 1 | 1 | | | |
| 17 | Label - Factory Adjusted | PETP Film | 419404-01 | 1 | 1 | 1 | | | |
| 18 | Label - R502 | PES Film | 4A0026-01 | 1 | 1 | 1 | | | |
| 19 | Warning Label | PVC Film | 435955-01 | 1 | 1 | 1 | | | |
| 20 | Tag - Warning: Electrical Connection | Paper | 428430-01 | 1 | 1 | 1 | | | |





| MODEL | | TITLE | | | | | | |
|-----------|----------------------------|--------------------------|-------------|--------------|-----|-----|-----|-----|
| F-1100MAA | | H. SPOUT CONTROL ASSY | | | | | | |
| INDEX NO. | DESCRIPTION | MATERIAL OR MODEL NUMBER | PART NUMBER | REQ'D NUMBER | | | | |
| | | | | K-1 | K-2 | A-0 | B-0 | B-1 |
| 1 | Cover - Chute | ABS | 213116G01 | 1 | - | | | |
| | | | 214796G01 | | 1 | 1 | 1 | 1 |
| 2 | Spout Cover | S.S | 323307G01 | 1 | - | | | |
| | | | 325070G01 | | 1 | 1 | 1 | 1 |
| 3 | Proximity Switch | RS-601 | 427223-01 | 1 | 1 | 1 | 1 | 1 |
| 4 | Bracket - Proximity Switch | S.S | 427158-01 | 1 | 1 | 1 | 1 | 1 |
| 5 | Paddle | S.S | 323310G01 | 1 | 1 | 1 | 1 | 1 |
| 6 | Axle | S.S | 435873-01 | 1 | 1 | 1 | 1 | 1 |
| 7 | Snap Pin | S.S, SSP-4 | 715S-0004 | 2 | 2 | 2 | 2 | 2 |
| 8 | Thumbscrew | ABS, S.S | 415949G04 | | 3 | 3 | 3 | 3 |
| 9 | Bushing | SR-5KN-4 | 420472-06 | | 1 | 1 | 1 | 1 |
| 10 | Cover - Proximity Switch | S.S | 324106-01 | | 1 | 1 | 1 | 1 |

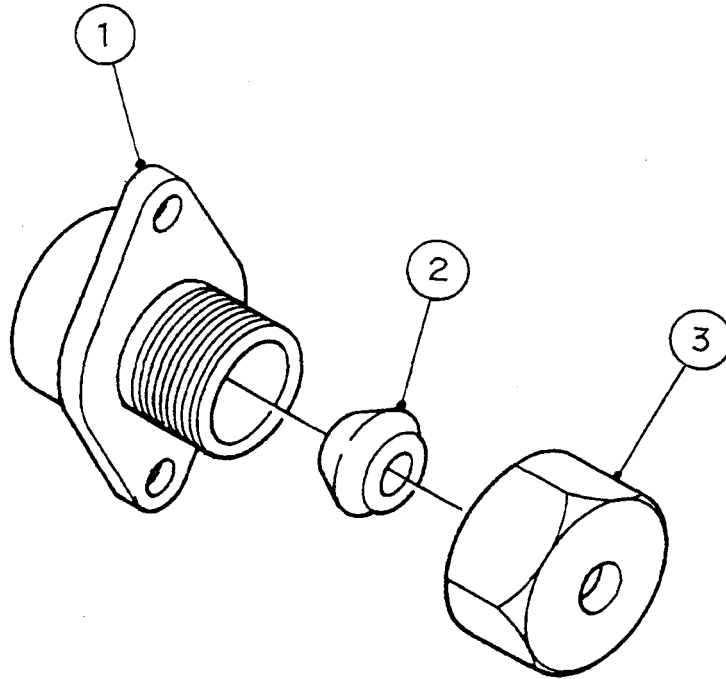
HA

| MODEL | | TITLE | | | | | | |
|-----------|----------------------------|--------------------------|-------------|--------------|-----|-----|--|--|
| F-1100HAA | | H. SPOUT CONTROL ASSY | | | | | | |
| INDEX NO. | DESCRIPTION | MATERIAL OR MODEL NUMBER | PART NUMBER | REQ'D NUMBER | | | | |
| | | | | B-2 | C-0 | C-1 | | |
| 1 | Cover - Chute | ABS | 214796G01 | 1 | 1 | 1 | | |
| 2 | Spout Cover | S.S | 325070G01 | 1 | 1 | 1 | | |
| 3 | Proximity Switch | RS-601 | 427223-01 | 1 | 1 | 1 | | |
| 4 | Bracket - Proximity Switch | S.S | 427158-01 | 1 | 1 | 1 | | |
| 5 | Paddle | S.S | 323310G01 | 1 | 1 | 1 | | |
| 6 | Axle | S.S | 435873-01 | 1 | 1 | 1 | | |
| 7 | Snap Pin | S.S, SSP-4 | 715S-0004 | 2 | 2 | 2 | | |
| 8 | Thumbscrew | ABS, S.S | 415949G04 | 3 | 3 | 3 | | |
| 9 | Bushing | SR-5KN-4 | 420472-06 | 1 | 1 | 1 | | |
| 10 | Cover - Proximity Switch | S.S | 324106-01 | 1 | 1 | 1 | | |

HA
F-1100MAA

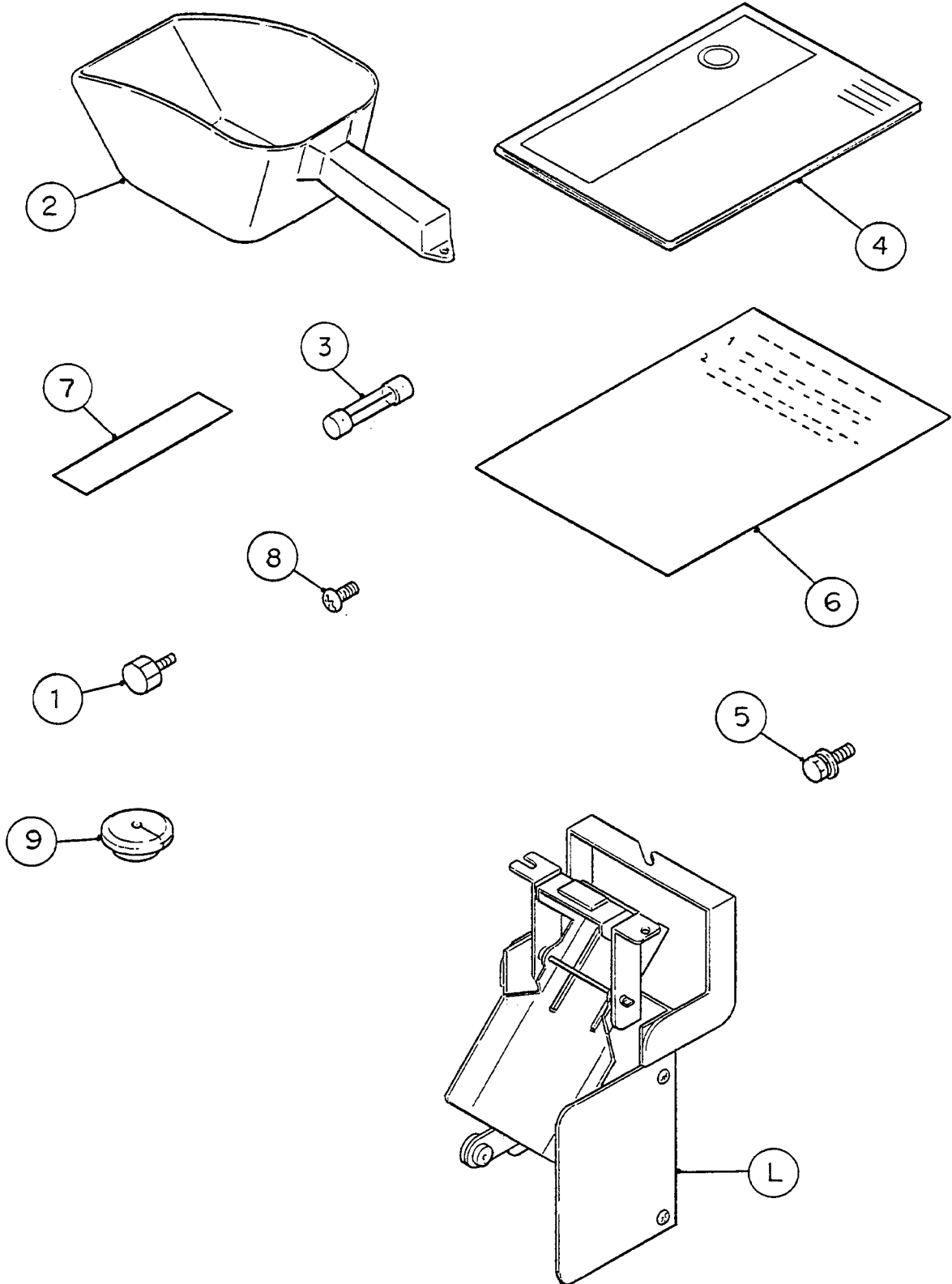
J. FITTING (K) ASSY

(C-0)(C-1)
(B-0)(B-1)(B-2)
(K-1)(K-2)(A-0)



HA

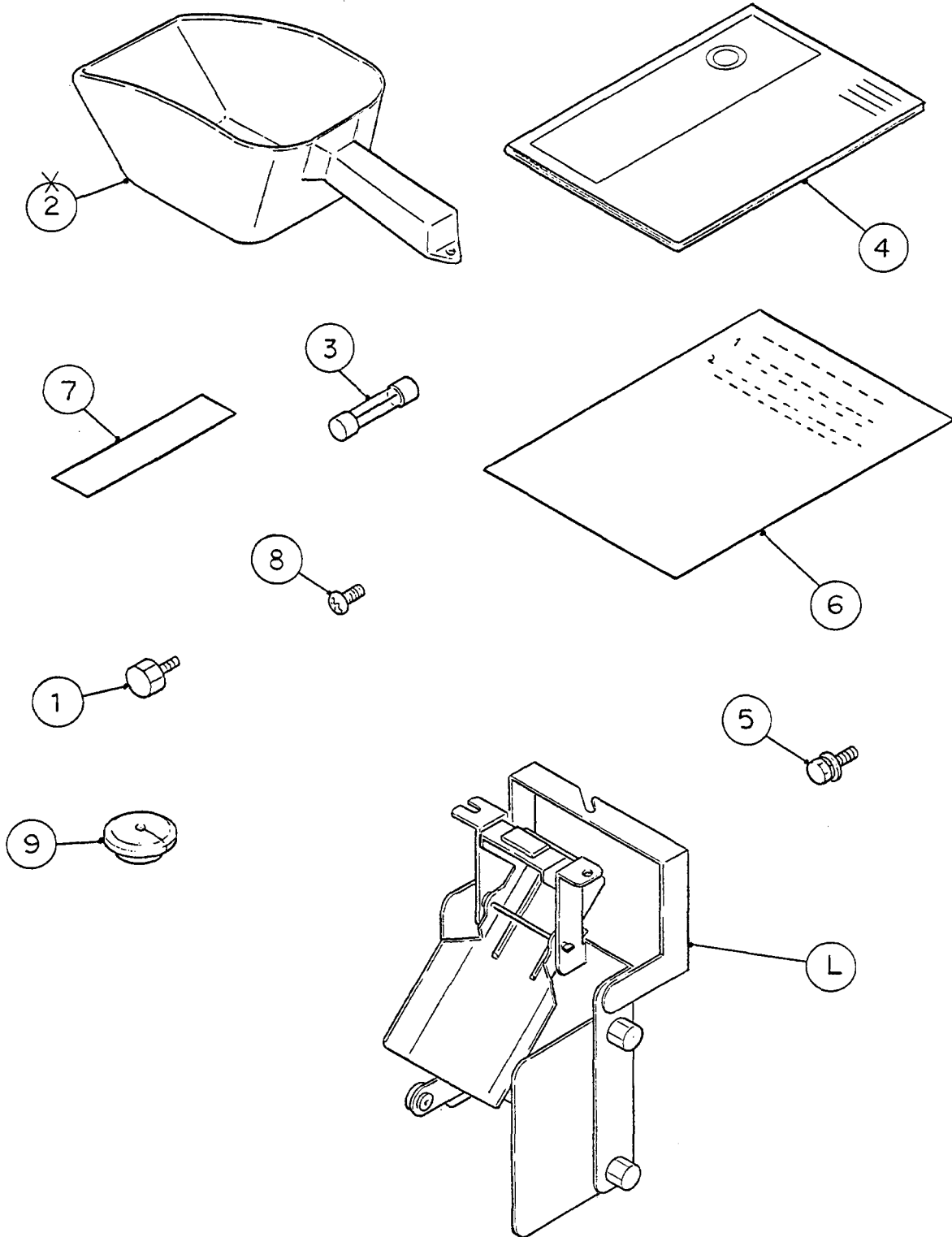
| MODEL | | TITLE | | | | | | | | | |
|------------------|--------------------|--------------------------------|------------------|--------------|-----|-----|-----|-----|-----|-----|-----|
| F-1100MAA | | J. FITTING (K) ASSEMBLY | | | | | | | | | |
| INDEX NO. | DESCRIPTION | MATERIAL OR MODEL NUMBER | PART NUMBER | REQ'D NUMBER | | | | | | | |
| | | | | K-1 | K-2 | A-0 | B-0 | B-1 | B-2 | C-0 | C-1 |
| 1 | Fitting (K) | Brass Casting | 310978-01 | 1 | 1 | 1 | 1 | 1 | 1 | 1 | 1 |
| 2 | Packing (C) | Sy.R | 415715-02 | 1 | 1 | 1 | 1 | 1 | 1 | 1 | 1 |
| 3 | Nut (B) | Brass | 415713-02 | 1 | 1 | 1 | 1 | 1 | 1 | 1 | 1 |



HA
F-1100MAA

K. ACCESSORIES

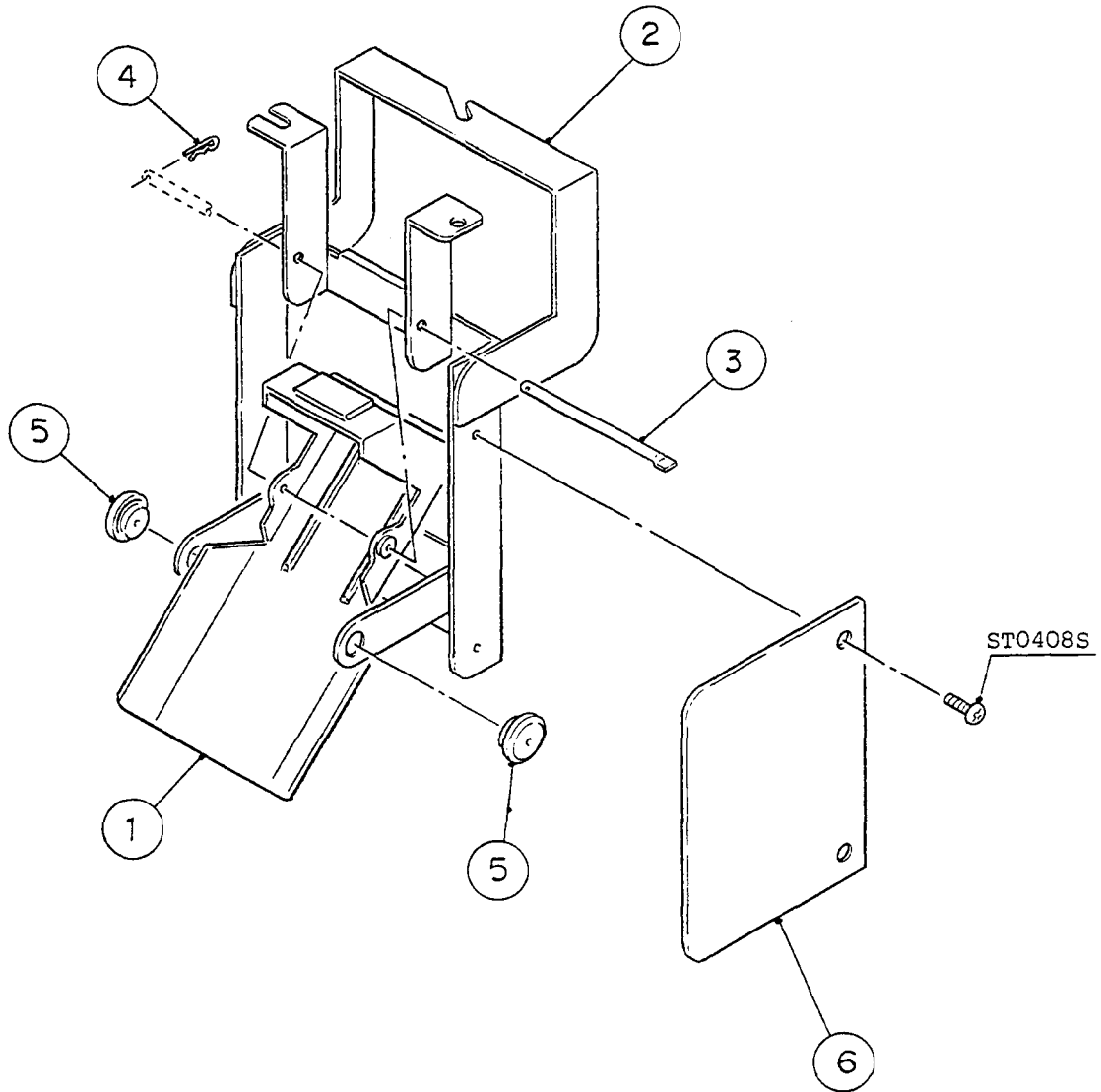
(C-1)
(B-1)(B-2)(C-0)
(K-2)(A-0)(B-0)

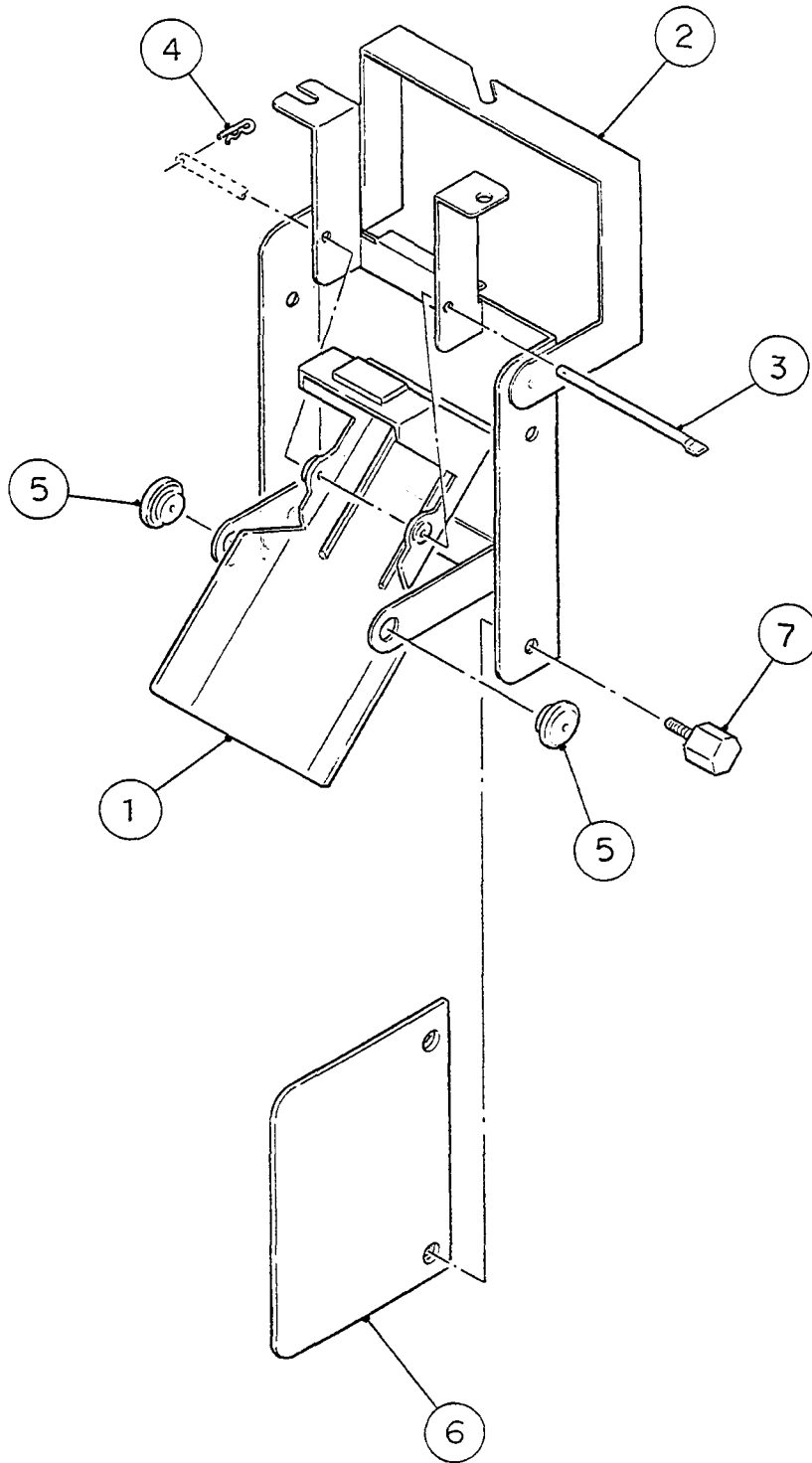


| MODEL | | TITLE | | | | | | |
|-----------|---------------------------------|--------------------------|-------------|--------------|-----|-----|-----|-----|
| F-1100MAA | | K. ACCESSORIES | | | | | | |
| INDEX NO. | DESCRIPTION | MATERIAL OR MODEL NUMBER | PART NUMBER | REQ'D NUMBER | | | | |
| | | | | K-1 | K-2 | A-0 | B-0 | B-1 |
| J | BIN CONTROL ASSY | - | 323318A01 | 1 | - | | | |
| | | | 325073A01 | | 1 | 1 | 1 | 1 |
| 1 | Thumbscrew | S.S, ABS | 415949G04 | 3 | 3 | 3 | 3 | 3 |
| 2 | Scoop | PE | 208185-01 | 1 | 1 | 1 | 1 | X 1 |
| 3 | Fuse | FGAO-2, 1A | 420468-03 | 1 | 1 | 1 | 1 | 1 |
| 4 | Instruction Manual | Paper | 91U2AF10A | 1 | 1 | 1 | 1 | 1 |
| 5 | Bolt And Washer Assy SW | S.S, M8x16 | - | 2 | 2 | 2 | 2 | 2 |
| 6 | Instruction Sheet - Bin Control | Paper | 323351-01 | 1 | 1 | 1 | 1 | 1 |
| 7 | Instruction Sheet - Fastener | Paper | 427122-01 | 1 | 1 | 1 | 1 | 1 |
| 8 | Truss Head Machine Screw | S.S. M4x30 | - | 2 | 2 | 2 | 2 | 2 |
| 9 | Bushing - Capillary Tube | EP Rubber | 425307-01 | 1 | 1 | 1 | 1 | 1 |

HA

| MODEL | | TITLE | | | | | | |
|-----------|---------------------------------|--------------------------|-------------|--------------|-----|-----|--|--|
| F-1100HAA | | K. ACCESSORIES | | | | | | |
| INDEX NO. | DESCRIPTION | MATERIAL OR MODEL NUMBER | PART NUMBER | REQ'D NUMBER | | | | |
| | | | | B-2 | C-0 | C-1 | | |
| J | BIN CONTROL ASSY | - | 325073A01 | 1 | 1 | 1 | | |
| 1 | Thumbscrew | S.S, ABS | 415949G04 | 3 | 3 | 3 | | |
| 2 | - | - | - | - | | | | |
| 3 | Fuse | FGAO-2, 1A | 420468-03 | 1 | 1 | 1 | | |
| 4 | Instruction Manual | Paper | 91U2AF10A | 1 | 1 | 1 | | |
| 5 | Bolt And Washer Assy SW | S.S, M8x16 | - | 2 | 2 | 2 | | |
| 6 | Instruction Sheet - Bin Control | Paper | 323351-01 | 1 | 1 | 1 | | |
| 7 | Instruction Sheet - Fastener | Paper | 427122-01 | 1 | 1 | 1 | | |
| 8 | Truss Head Machine Screw | S.S, M4x30 | - | 2 | 2 | 2 | | |
| 9 | Bushing - Capillary Tube | EP Rubber | 425307-01 | 1 | 1 | 1 | | |





HA

| MODEL | | TITLE | | | | | | |
|-----------|--------------------------|--------------------------|-------------|--------------|-----|-----|-----|-----|
| F-1100HAA | | L. BIN CONTROL ASSY | | | | | | |
| INDEX NO. | DESCRIPTION | MATERIAL OR MODEL NUMBER | PART NUMBER | REQ'D NUMBER | | | | |
| | | | | K-1 | K-2 | A-0 | B-0 | B-1 |
| 1 | Actuator - Switch | ABS, S.S | 209168G01 | 1 | 1 | 1 | 1 | 1 |
| 2 | Bin Control Bracket | S.S | 323306G01 | 1 | - | | | |
| | | | 325072G01 | | 1 | 1 | 1 | 1 |
| 3 | Shaft | | 412337-03 | 1 | 1 | 1 | 1 | 1 |
| 4 | Snap Pin | S.S | 715S-0004 | 1 | 1 | 1 | 1 | 1 |
| 5 | Bushing - Capillary Tube | S.S, SSP-4 | 425307-01 | 2 | 2 | 2 | 2 | 2 |
| 6 | Paddle Cover (B) | PC | 435869-01 | 1 | - | | | |
| | Paddle Cover | PC | 438297G01 | | 1 | 1 | 1 | 1 |
| 7 | Thumbscrew | ABS, S.S | 415949G03 | 2 | - | | | |
| | | | 415949G01 | | 2 | 2 | 2 | 2 |

HA

| MODEL | | TITLE | | | | | | |
|-----------|--------------------------|--------------------------|-------------|--------------|-----|-----|--|--|
| F-1100HAA | | L. BIN CONTROL ASSY | | | | | | |
| INDEX NO. | DESCRIPTION | MATERIAL OR MODEL NUMBER | PART NUMBER | REQ'D NUMBER | | | | |
| | | | | B-2 | C-0 | C-1 | | |
| 1 | Actuator - Switch | ABS, S.S | 209168G01 | 1 | 1 | 1 | | |
| 2 | Bin Control Bracket | S.S | 325072G01 | 1 | 1 | 1 | | |
| 3 | Shaft | | 412337-03 | 1 | 1 | 1 | | |
| 4 | Snap Pin | S.S | 715S-0004 | 1 | 1 | 1 | | |
| 5 | Bushing - Capillary Tube | S.S, SSP-4 | 425307-01 | 2 | 2 | 2 | | |
| 6 | Paddle Cover | PC | 438297G01 | 1 | 1 | 1 | | |
| 7 | Thumbscrew | ABS, S.S | 415949G01 | 2 | 2 | 2 | | |