

# Hoshizaki America, Inc.

Modular Flaker

Models  
F-450MAH(-C)



“A Superior Degree  
of Reliability”

[www.hoshizaki.com](http://www.hoshizaki.com)

## PARTS LIST



Number: 71194  
Issued: 10-09-2001  
Revised: 4-1-2011

## CONTENTS

Auxiliary Codes.....	3
Note About Ordering Parts .....	3
Material Abbreviations .....	4
A. Ice Flaker Assembly .....	5
B. Ice Making Unit .....	8
C. Refrigeration Circuit.....	10
D. Water Circuit .....	12
E. Control Box Assembly.....	14
F. Chute Assembly .....	16
G. Label Location.....	18
H. Accessories & Packaging .....	20

## Auxiliary Codes

### F-450MAH

L-0 April 2001  
M-0 December 2001  
N-0 December 2002  
P-0 December 2003  
P-1 June 2004  
Q-0 December 2004  
R-0 December 2005  
S-0 January 2007  
S-1 November 2007  
T-0 January 2008  
U-0 January 2009  
V-0 January 2010  
V-1 April 2010  
V-2 May 2010  
V-3 September 2010  
A-0 January 2011  
A-1 June 2011

### F-450MAH-C

L-0 April 2001  
M-0 February 2002  
N-1 December 2002  
P-0 December 2003  
P-1 July 2004  
Q-0 December 2004  
R-0 December 2005  
S-0 January 2007  
S-1 November 2007  
T-0 February 2008  
U-0 January 2009  
V-0 January 2010  
V-1 April 2010  
V-2 May 2010  
V-3 December 2010  
A-0 January 2011  
A-1 June 2011

## Auxiliary Code Breakdown

The auxiliary code is the first two characters in the serial number. The first character indicates the year. Years progress or regress in alphabetical order. The series runs from "A" through "V" and the letters "I" and "O" are skipped. The second character indicates significant part changes within a year. Base is "0" and this number advances for each change. In cases where there is a letter in parentheses, this designates the month. This is the last character in the serial number. The series runs from "(A)" through "(M)" and the letter "(I)" is skipped. This designation is only included when identifying a parts change within an auxiliary code.

## Note About Ordering Parts

Most assemblies cannot be ordered as complete units; parts in the assemblies generally must be ordered separately.

## Material Abbreviations

### ALUMINUM

AL = Aluminum

### COPPER

CU = Copper

### PLASTIC

ABS = Acrylonitrile -butadiene -styrene  
AC = Polyacetal  
EVA = Ethylene vinyl acetate  
PA = Polyamide = Nylon  
PC = Polycarbonate  
PE = Polyethylene  
PES = Polyester  
PETP = Polyethylene terephthalate = Tetlon  
PP = Polypropylene  
PS = Polystyrene  
PTFE = Polytetrafluoroethylene = Teflon  
PUR = Polyurethane  
PVC = Polyvinyl chloride

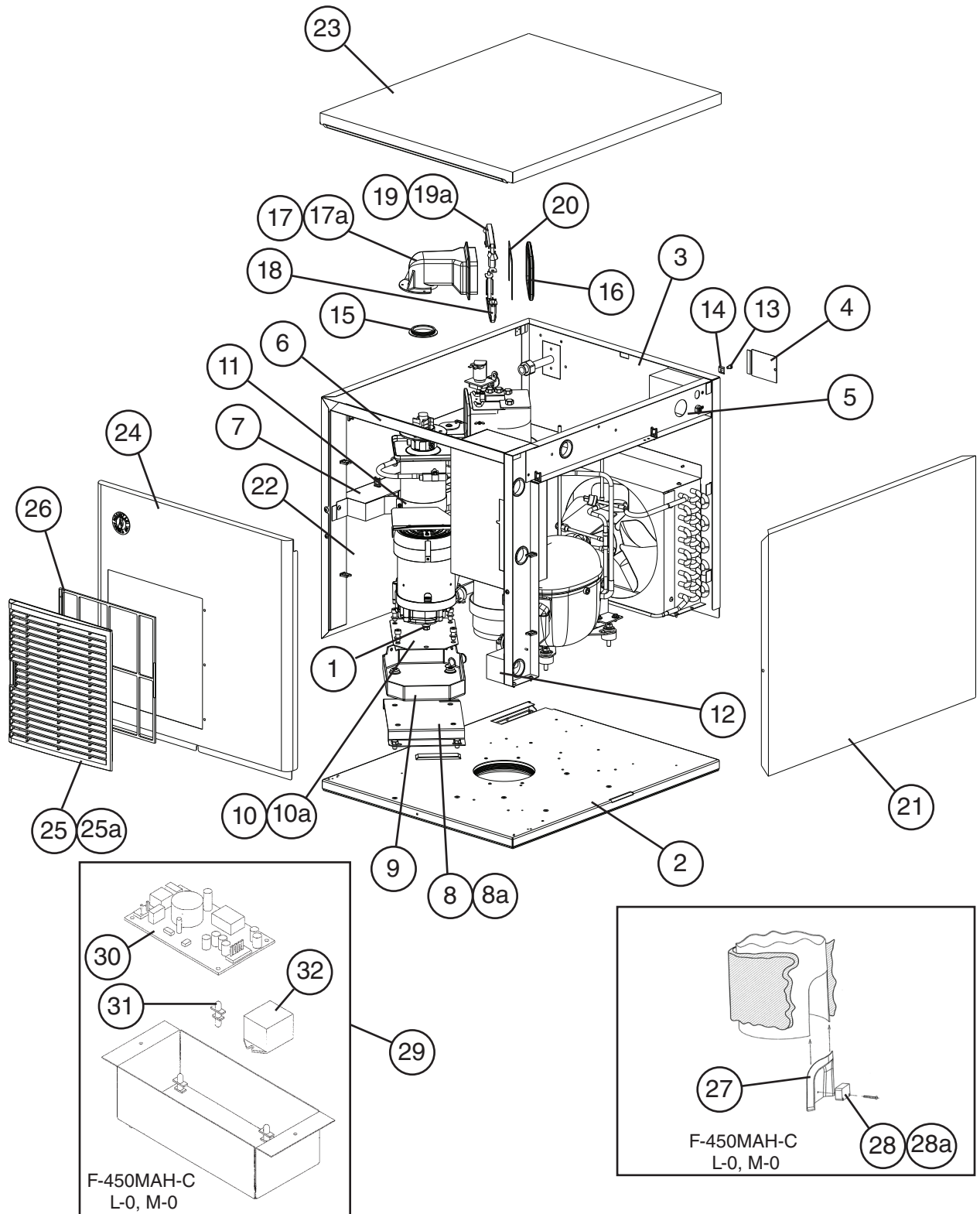
### RUBBER

VN = Vinyl Nitrile  
EPDM = EP rubber  
NBR = Nitrile butadiene rubber  
NR = Natural rubber  
NP = Neoprene  
SI.R = Silicone rubber  
SY.R = Synthetic rubber  
EPH = Epichlorohydrin

### STEEL

GS = Galvanized steel  
SS = Stainless steel  
PS = Plated steel  
PAS = Primed steel

**A. Ice Flaker Assembly**  
**F-450MAH(-C)**  
 L-0 to A-1

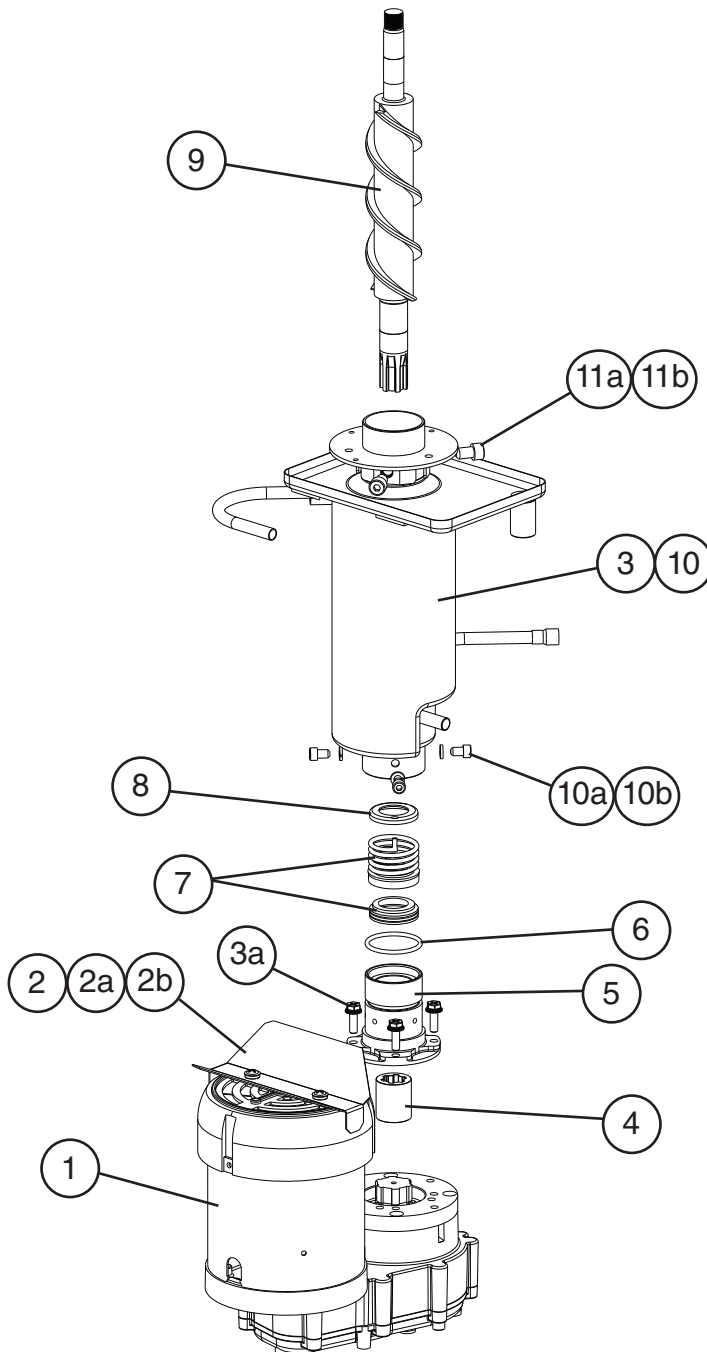
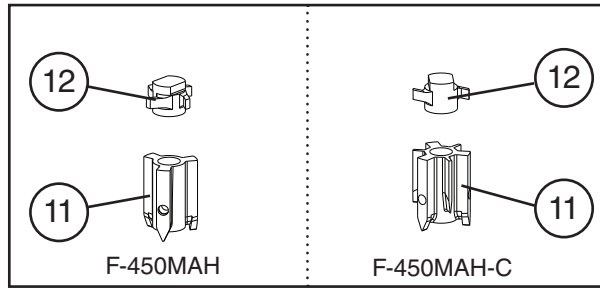


Title: **A. Ice Flaker Assembly** Model: **F-450MAH(-C)**

Index No.	Description	Material or Model Number	Part Number	Required Number											
				L-0 to N-0	N-1 to S-0	S-1 to V-0	V-1 to A-1								
<b>Ice Flaker Assembly Order Assembly Parts Individually</b>		<b>F-450MAH</b>	1A0549A01	1	1	-									
			1A0549A04			1	-								
			1A1996A01					1							
		<b>F-450MAH-C</b>	1A0549A02	1	-										
			1A0549A03		1	-									
			1A0549A05			1	-								
			1A1996A02						1						
1	Hex Bolt		<a href="#">7B02-0812</a>	3	3	3	3								
2	Chassis		2A1178G01	1	1	1	1								
3	Rear Panel		<a href="#">2A0916G01</a>	1	1	1	1								
4	Junction Box Cover		<a href="#">433410-01</a>	1	1	1	1								
5	Side Frame (R)		<a href="#">2A0917G01</a>	1	1	1	1								
6	Front Frame		<a href="#">2A0918G01</a>	1	1	1	1								
7	Reservoir Bracket		<a href="#">2A0919G01</a>	1	1	1	1								
8	Gear Motor Bracket		<a href="#">3A0396G01</a>	1	1	-									
	Drain Pan Bracket		<a href="#">4A4314G01</a>			1	1								
8a	Hex Bolt	8x12, SS	<a href="#">7B02-0812</a>	2	2	2	2								
9	Drain Pan		<a href="#">323765G02</a>	1	1	-									
			<a href="#">4A4354G01</a>			1	1								
10	Gear Motor Bracket		<a href="#">4A4308-01</a>			1	1								
10a	Socket Head Cap Screw	8x20, SS	<a href="#">7S12-0820</a>			4	4								
11	Evaporator Strap		<a href="#">4A1262-01</a>	1	1	1	1								
12	Barrier		<a href="#">4A0688-01</a>	1	1	1	1								
13	Ground Screw		<a href="#">433304-02</a>	1	1	1	1								
14	Square Washer		<a href="#">433537-02</a>	1	1	1	1								
15	Evaporator Packing		<a href="#">427151-01</a>	1	1	1	1								
16	Spout Packing		<a href="#">321037-01</a>	1	1	1	1								
17	Spout		<a href="#">2A0915-01</a>	1	1	1	1								
17a	Thumbscrew		<a href="#">415949G08</a>	3	3	3	3								
18	Lower Spout Strap		<a href="#">321038G02</a>	1	1	1	1								
19	Upper Spout Strap		<a href="#">328703-02</a>	1	1	1	1								
19a	Wing Nut		<a href="#">7E12-0600</a>	2	2	2	2								
20	Chute Bracket		<a href="#">4A1712-01</a>	1	1	1	1								
21	Side Panel (R)		<a href="#">2A2067G01</a>	1	1	1	1								
22	Side Panel (L)		<a href="#">2A2066G01</a>	1	1	1	1								
23	Top Panel		<a href="#">2A2064-01</a>	1	1	1	1								
24	Front Panel		<a href="#">2A2065-01</a>	1	1	1	1								
25	Louver		<a href="#">1A0547-01</a>	1	1	1	1								
25a	Push Retainer		<a href="#">4A2414-01</a>	3	3	3	3								
26	Air Filter		<a href="#">2A2062G01</a>	1	1	1	1								
27	Sensor Housing	<b>F-450MAH-C</b>	<a href="#">2A0996-01</a>	1	-										
28	Photoelectric Sensor (Bin Control)	<b>F-450MAH-C</b>	<a href="#">4A1173-01</a>	1	-										
28a	Cross Recessed Pan Head Tapping Screw	<b>F-450MAH-C</b>	<a href="#">7C1111434</a>	2	-										

Title: <b>A. Ice Flaker Assembly</b> Model: <b>F-450MAH(-C)</b>											
Index No.	Description	Material or Model Number	Part Number	Required Number							
				L-0 to N-0	N-1 to S-0	S-1 to V-0	V-1 to A-1				
29	Power Supply Assembly (includes items 29 through 31)	<b>F-450MAH-C</b>	4A1315A01	1	-						
30	Photoelectric Sensor (Bin Control) Power Supply	<b>F-450MAH-C</b>	<a href="#">4A1355-01</a>	1	-						
31	Board Support	<b>F-450MAH-C</b>	<a href="#">4A0336-03</a>	4	-						
32	Photoelectric Sensor (Bin Control) Relay	<b>F-450MAH-C</b>	<a href="#">4A1382-01</a>	1	-						

**B. Icemaking Unit**  
**F-450MAH(-C)**  
 L-0 to A-1





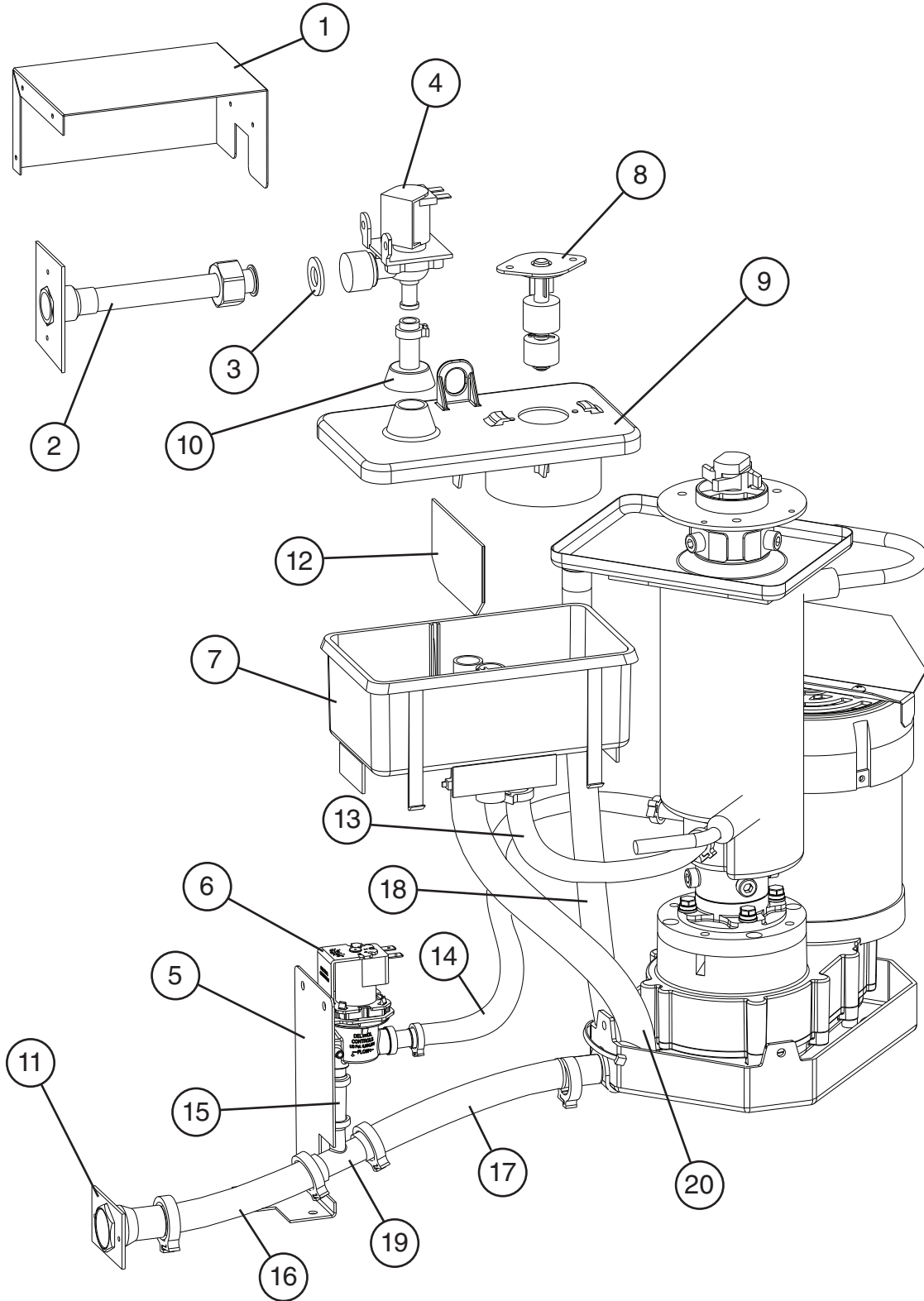
Title: <b>B. Icemaking Unit</b> Model: <b>F-450MAH(-C)</b>													
Index No.	Description	Material or Model Number	Part Number	Required Number									
				L-0 to P-1	Q-0 to S-0	S-1 to U-0	V-0 to A-1						
<b>Icemaking Unit Order Assembly Parts Individually (for mounting hardware, see section "A" item 1)</b>		<b>F-450MAH</b>	3A0841A01	1	1	-							
			3A0841A03			1	1						
		<b>F-450MAH-C</b>	3A0841A02	1	1	-							
			3A0841A04			1	1						
1	Gear Motor		<a href="#">4A2193-01</a>	1	1	-							
			<a href="#">4A4321-01</a>			1	1						
2	Gear Motor Barrier		3A1037-01	1	1	-							
	Gear Motor Cover		<a href="#">3A4584-01</a>			1	1						
2a	FT Screw	4x8, SS	<a href="#">7F32-0408</a>	2	2	-							
	Truss Head Screw	5x8, SS	<a href="#">7C32-0508</a>			2	2						
2b	Rubber Washer		<a href="#">4A5268-02</a>			2	2						
3	Evaporator Assembly (includes items 4 through 12) Order Assembly Parts Individually	<b>F-450MAH</b> HS-2001	339866A01	1	-								
			339866A03		1	1	1						
		<b>F-450MAH-C</b> HS-2002	339866A02	1	-								
			339866A04		1	1	1						
3a	Bolt	6x20	<a href="#">4A1989-01</a>	4	4	4	4						
4	Spline Coupling		<a href="#">418316-01</a>	1	1	1	1						
5	Housing		<a href="#">206013G03</a>	1	1	1	1						
6	"O" Ring		<a href="#">7616-G040</a>	1	1	1	-						
			<a href="#">4A4755-01</a>				1						
7	Mechanical Seal		<a href="#">432491-01</a>	1	1	1	1						
8	Ring		<a href="#">432494-01</a>	1	1	1	1						
9	Auger		<a href="#">341448G01</a>	1	1	1	1						
10	Evaporator		2A1699G01	1	-								
			<a href="#">2A3310G01</a>		1	1	1						
10a	Socket Head Cap Screw	6x10, SS	<a href="#">7S12-0610</a>	4	4	4	4						
10b	Split Lock Washer	6, SS	<a href="#">7L22-0600</a>	4	4	4	4						
11	Extruding Head	<b>F-450MAH</b>	<a href="#">340077G01</a>	1	1	1	1						
			<b>F-450MAH-C</b>	<a href="#">327141G01</a>	1	1	1	1					
11a	Seal Bolt	M8	<a href="#">P01768-01</a>	3	3	3	3						
11b	Washer		<a href="#">453791-01</a>	3	3	3	3						
12	Cutter	<b>F-450MAH</b>	<a href="#">453790-01</a>	1	1	1	1						
			<b>F-450MAH-C</b>	<a href="#">440905-01</a>	1	1	1	1					



Title: **C. Refrigeration Circuit** Model: **F-450MAH(-C)**

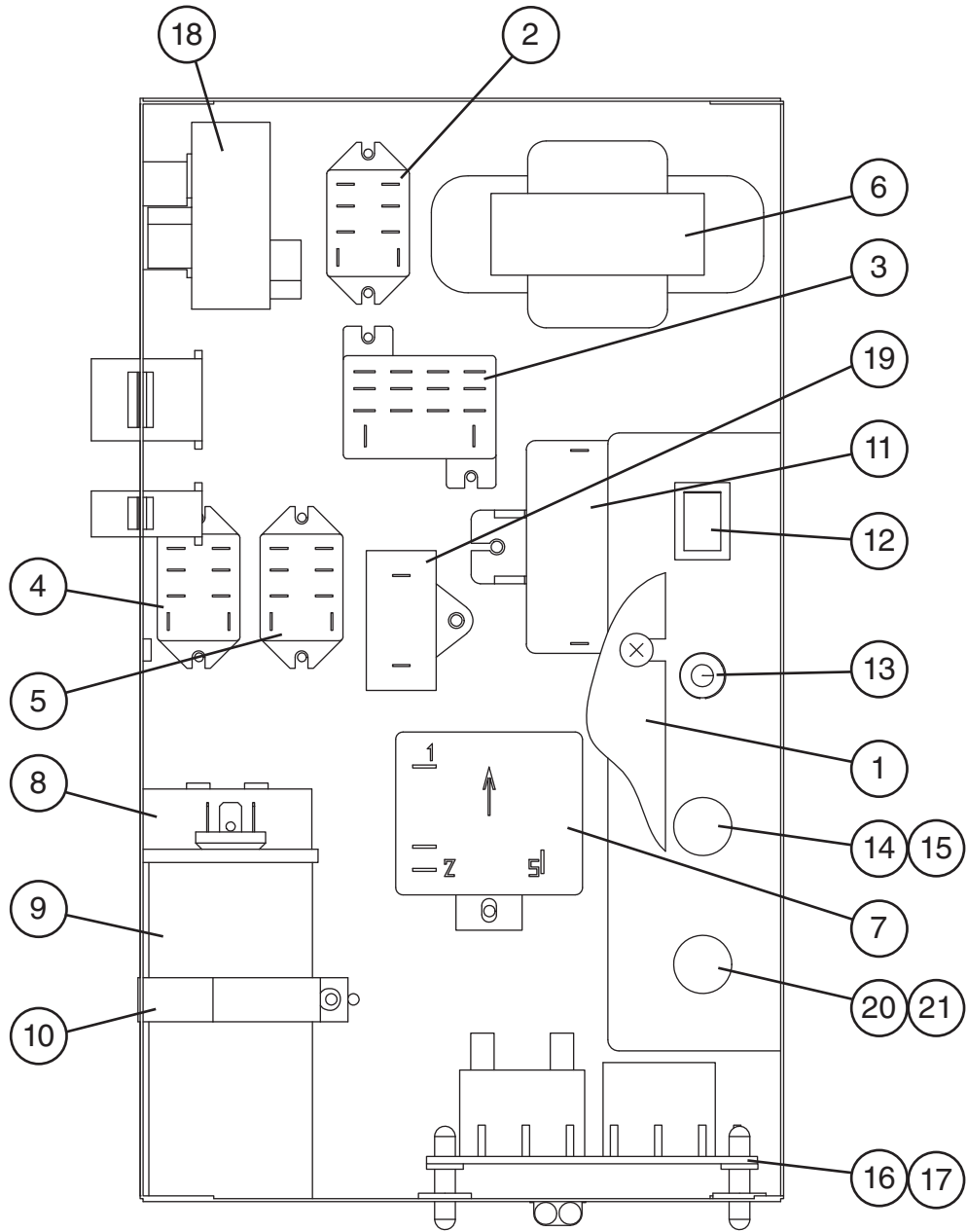
Index No.	Description	Material or Model Number	Part Number	Required Number									
				L-0 to P-0	P-1 to S-0	S-1 to V-0	V-1 to V-3	A-0 A-1					
<b>Refrigeration Circuit Order Assembly Parts Individually</b>			2A0926A01	1	1	1	-						
			2A5930A01				1	-					
			2A5930A02					1					
1	Compressor	RS43C2E-CAA-219	4A2300-01	1	1	1	-						
		RST45C1ECAA-202	4A4479-01				1	1					
1a	Grommet		434403-01	4	4	4	-						
			4A2593-01				4	4					
1b	Spacer		434404-01	4	4	4	-						
			4A2595-01				4	4					
1c	Bolt	8x45	437889-01	4	4	4	4	4					
2	Protector		4A1805-01	1	1	1	-						
			4A4481-01				1	1					
3	Protector Holder		437339-01	1	1	1	-						
4	Terminal Cover		4A4479F01				1	1					
5	Spring Clip		4A4479F02				1	1					
6	Condenser		2A0923-01	1	1	1	1	1					
7	Shroud		2A0908-01	1	1	1	1	1					
8	Fan Motor Bracket		3A0828-01	1	1	1	1	1					
8a	Hex Head Bolt w/Washer	5x12, SS	7B0230512	4	4	4	4	4					
9	Fan Motor		440911-01	1	-								
			4A3158-01		1	1	1	1					
9a	Self-Locking Nut		7N2110832	4	4	4	4	4					
10	Fan Blade		444898-01	1	1	1	1	1					
11	Drier		4A1113-01	1	1	1	1	1					
12	Expansion Valve		4A4493-01	1	1	1	1	1					
13	Expansion Valve Cover		4A1168-01	1	1	1	1	1					
14	High-Pressure Switch		433441-05	1	1	1	-						
			463180-05				1	1					
15	Expansion Valve Bulb Holder		3A0112-01	1	1	1	-						
			3A0107-01				1	1					
16	Clamp		443461-01	1	1	1	1	1					

**D. Water Circuit**  
**F-450MAH(-C)**  
L-0 to A-1



Title: <b>D. Water Circuit</b> Model: <b>F-450MAH(-C)</b>												
Index No.	Description	Material or Model Number	Part Number	Required Number								
				L-0 M-0	N-0 to A-1							
<b>Water Circuit Order Assembly Parts Individually</b>			2A0942A01	1	1							
1	Water Valve Bracket		3A0553-01	1	1							
2	Water Supply Pipe		4A0891G01	1	1							
3	Washer		4A0867-01	1	1							
4	Inlet Water Valve		4A0865-01	1	1							
5	Drain Valve Bracket		4A1264-01	1	1							
6	Drain Valve		4A2077-01	1	-							
			4A2772-01		1							
7	Reservoir		2A0753-01	1	1							
8	Float Switch		435490-01	1	1							
9	Reservoir Cover		214810-01	1	1							
10	Reservoir Inlet		4A0869-01	1	1							
11	Drain Fitting		4A0776G01	1	1							
12	Reservoir Separator		4A1255-01	1	1							
13	Reservoir Hose		4A1165-05	1	1							
14	Silicone Hose	L=230	7730I3896	1	1							
15	Vinyl Hose	L=65	7716-0913	1	1							
16	Vinyl Hose	L=270	7716-2025	1	1							
17	Vinyl Hose	L=80	7716-2025	1	1							
18	Vinyl Hose	L=355	7725-1923	1	1							
19	Tee		4A1331-01	1	1							
20	Silicone Hose	L=340	7730-1822	1	1							
<b>Clamps</b>												
	Hose Clamp		4A2017-01	5	5							
	Hose Clamp		4A2017-02	1	1							
	Hose Clamp		4A2017-08	5	5							
	Hose Clamp		4A2017-05	1	1							
	Hose Clamp		4A2017-06	1	1							

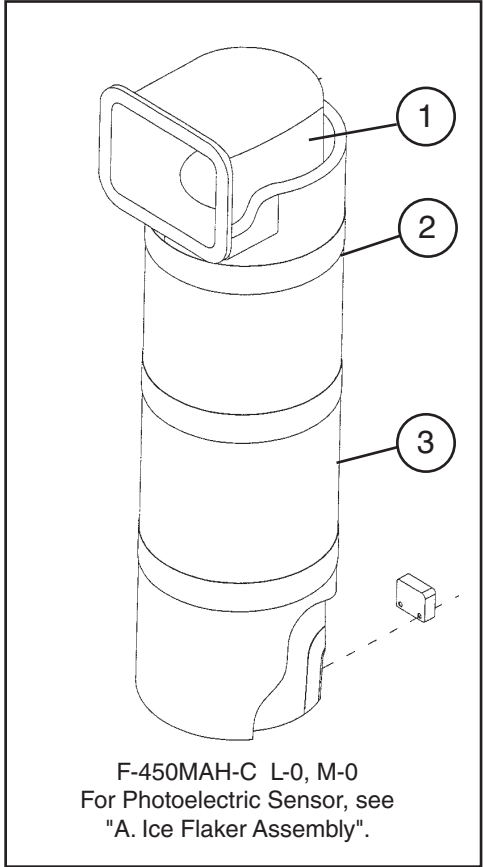
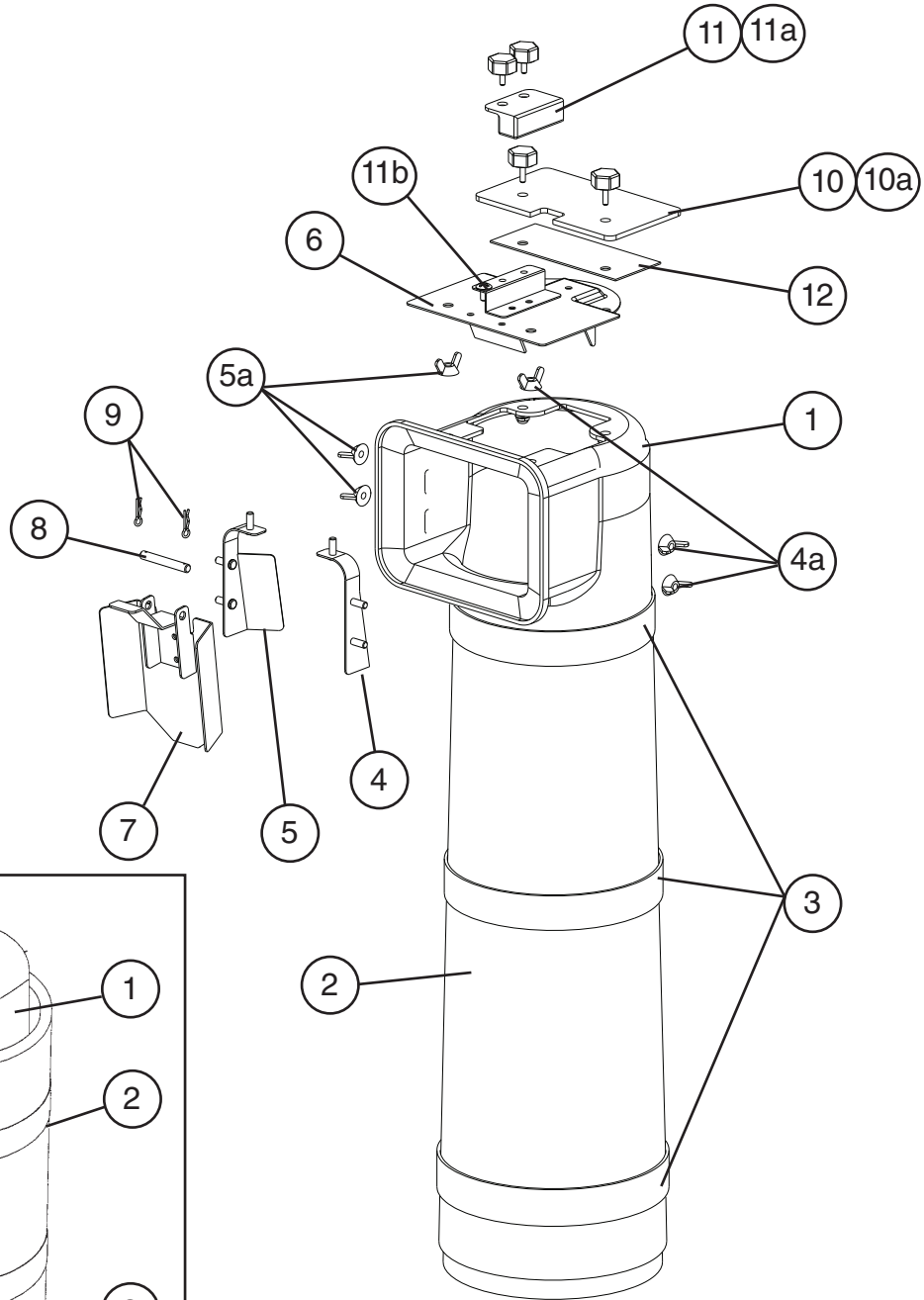
**E. Control Box Assembly**  
**F-450MAH(-C)**  
 L-0 to A-1



Title: <b>E. Control Box Assembly</b> Model: <b>F-450MAH(-C)</b>												
Index No.	Description	Material or Model Number	Part Number	Required Number								
				L-0	M-0 to S-0	S-1 to V-0	V-1 to V-3	A-0 A-1				
<b>Control Box Assembly Order Assembly Parts Individually</b>			2A0953A01	1	1	-						
			2A0953A02			1	-					
			2A0953A03				1	1				
1	Control Box Cover		3A0411-01	1	1	1	1	1				
2	Water Control Relay	24VAC	406132-03	1	1	1	1	1				
3	Gear Motor Relay	24VAC	406133-04	1	1	1	1	1				
4	Circuit Protect Relay	240VAC	418271-05	1	1	1	1	1				
5	Gear Motor Protect Relay	120VAC	418271-03	1	1	1	1	1				
6	Transformer		4A0557-01	1	1	1	1	1				
7	Start Relay(Starter)		4A1107-11	1	1	1	1	1				
8	Start Capacitor	243-292MFD, 115VAC	3A0076-10	1	1	1	-					
		243-292MFD, 165VAC	3A0076-20				1	1				
9	Run Capacitor	15MFD, 370VAC	439943-04	1	-							
		15MFD, 370VAC	3A2005-08		1	1	-					
		35MFD, 440VAC	3A2005-12				1	1				
10	Strap		434580-10	1	-							
			4A2262-02		1	1	1	1				
11	Gear Motor Capacitor	12MFD, 330VAC	4A0894-01	1	1	-						
		20MFD, 350VAC	4A4319-01			1	1	1				
12	Rocker Switch		4A0558-01	1	1	1	1	1				
13	Toggle Switch		4A2332-01	1	1	1	1	1				
14	Fuse Holder		4A0892-01	1	1	1	1	-				
			4A3449-01					1				
15	Fuse	AGC-1, 1A, 250V	4A0893-01	1	1	1	1	1				
16	Control (Timer) Board		437305-01	1	1	1	1	1				
17	Board Support		4A0336-03	4	4	4	4	4				
18	Drain Timer		4A0889-01	1	1	1	1	1				
19	Fan Motor Capacitor	5MFD, 250VAC	443192-02	1	1	1	1	1				
20	Fuse Holder		4A0892-02	1	1	1	1	-				
			4A3449-02					1				
21	Fuse	1.5A	4A0893-04	1	1	-						
		2.0A	4A0893-05			1	1	1				

# F. Chute Assembly F-450MAH(-C)

L-0 to A-1

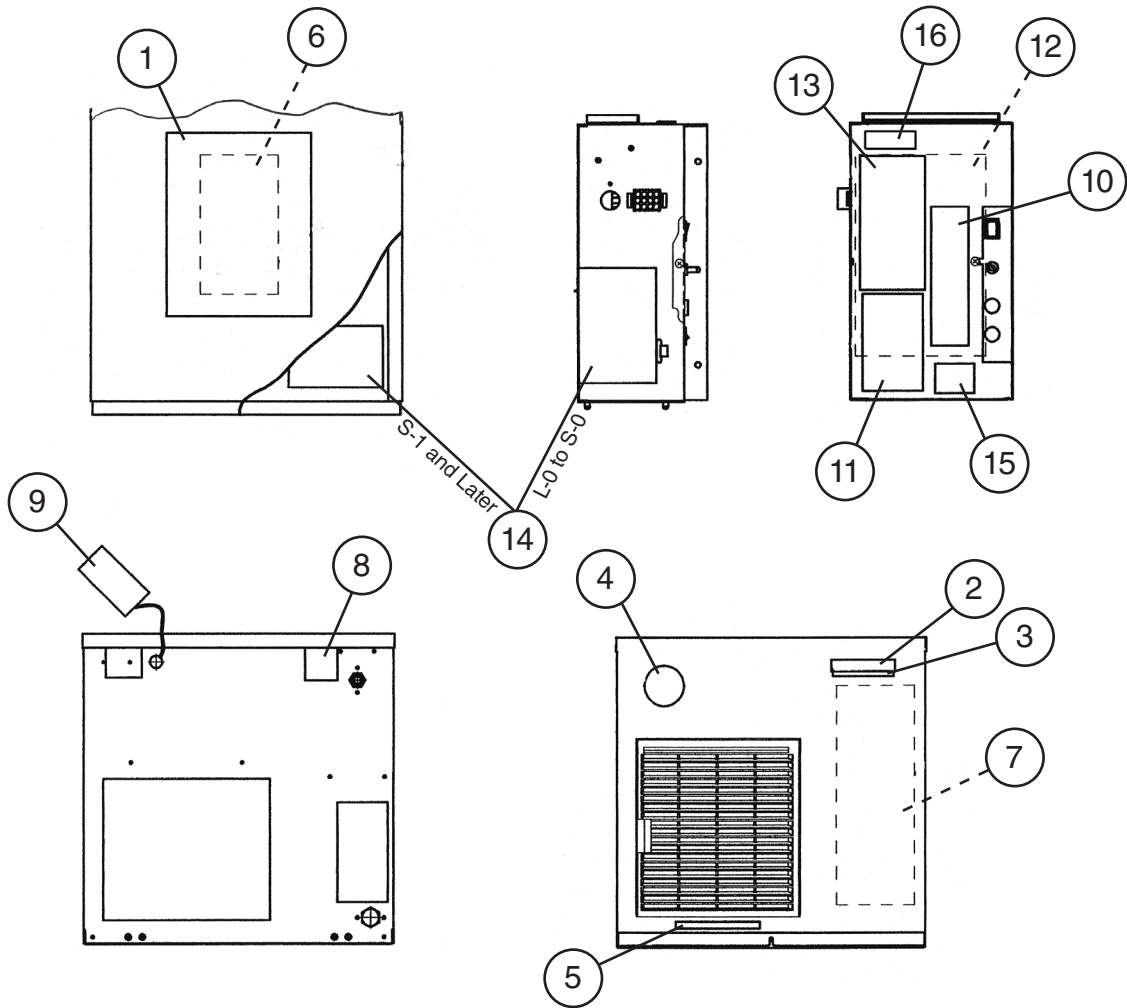




Title: F. Chute Assembly Model: F-450MAH (All), F-450MAH-C (N-1 and Later)										
Index No.	Description	Material or Model Number	Part Number	Required Number						
				L-0 to T-0 (E)	T-0 to A-1					
<b>Chute Assembly Order Assembly Parts Individually</b>		HS-2007	2A1705A03	1	1					
1	Chute		<a href="#">2A1308-01</a>	1	1					
2	Chute Insulation		<a href="#">2A0989-01</a>	1	1					
3	Tie		<a href="#">436531G01</a>	3	3					
4	Chute Baffle (A)		<a href="#">3A0400G01</a>	1	1					
4a	Wing Nut		<a href="#">7E12-0400</a>	3	3					
5	Chute Baffle (B)		<a href="#">3A0399G01</a>	1	1					
5a	Wing Nut		<a href="#">7E12-0400</a>	3	3					
6	Bin Control		<a href="#">3A1744G01</a>	1	1					
7	Actuator		<a href="#">436848G01</a>	1	1					
8	Shaft		<a href="#">436851-01</a>	1	1					
9	Snap Pin		<a href="#">715S-0005</a>	2	2					
10	Plate	SS	<a href="#">4A2039-01</a>	1	-					
		ABS			1					
10a	Thumbscrew		<a href="#">415949G10</a>	2	2					
11	Proximity Switch		<a href="#">4A2033-01</a>	1	1					
11a	Thumbscrew		<a href="#">415949G08</a>	2	2					
11b	Truss Head Screw (Ground)		<a href="#">7C32-0408</a>	1	1					
12	Packing		<a href="#">441217-01</a>	1	-					

Title: F. Chute Assembly Model: F-450MAH-C (L-0, M-0)										
Index No.	Description	Material or Model Number	Part Number	Required Number						
				L-0 M-0	See Chute Assembly Above for N-1 and Later					
<b>Chute Assembly Order Assembly Parts Individually</b>		<b>F-450MAH-C</b>	3A0874A01	1						
1	Chute		<a href="#">2A0925-01</a>	1						
2	Chute Insulation		<a href="#">2A0989-01</a>	1						
3	Tie		<a href="#">436531G01</a>	3						

**G. Label Location**  
**F-450MAH(-C)**  
 L-0 to A-1



Title: G. Label Location Model: F-450MAH(-C)												
Index No.	Description	Material or Model Number	Part Number	Required Number								
				L-0 to N-0 (H)	N-0 (J) to P-0	P-1	Q-0 to S-0	S-1 to V-0	V-1 to A-0	A-1		
Label Location Order Assembly Parts Individually	F-450MAH	2A2080A01	1	-								
		2A2080A05		1	1	1	-					
		2A2080A09					1	-				
		2A2080A11							1	1		
	F-450MAH-C	2A2080A02	1	-								
		2A2080A06		1	1	1	-					
		2A2080A10					1	-				
		2A2080A12								1	1	

Title: G. Label Location Model: F-450MAH(-C)													
Index No.	Description	Material or Model Number	Part Number	Required Number									
				L-0 to N-0 (H)	N-0 (J) to P-0	P-1	Q-0 to S-0	S-1 to V-0	V-1 to A-0	A-1			
1	Instruction Sheet		2A1054-01	1	1	1	1	-					
2	Emblem		4A0560-01	1	1	1	1	1	1	1			
3	Model Number Label	F-450MAH	4A2233-10	1	-								
		F-450MAH-C	4A2233-11	1	-								
4	Penguin-Ha-L Label		456246-01	1	1	1	1	1	1	1			
5	Air Filter Label		426177-01	1	1	1	1	1	1	1			
6	Instruction Label		326371-01	1	1	1	1	1	1	-			
7	Maintenance Label		2A3445-01	1	1	1	1	1	1	-			
			2A6531-01								1		
8	Nameplate	F-450MAH	3A1833-01	1	-								
			3A2542-01		1	1	1	-					
			3A4620-01					1	-				
			3A5964-01						1	1			
		F-450MAH-C	3A1833-02	1	-								
			3A2542-02		1	1	1	-					
			3A4620-02					1	-				
			3A5964-02						1	1			
9	Tag-Warning: Electrical Connection		435005-01	1	1	1	1	1	1	-			
			4A4766-01								1		
10	Control Label		4A1613-01	1	1	1	1	-					
			4A4392-01					1	1	-			
			4A5360-01								1		
11	Caution Label (E)		439145-01	1	1	1	1	1	1	-			
	Warning Label (E)		4A4923-01								1		
12	Wiring Label	F-450MAH	2A1830-01	1	1	1	1	-					
			3A4622-01					1	-				
			3A5966-01						1	1			
		F-450MAH-C	2A1396-01	1	-								
			2A1830-01		1	1	1	-					
			3A4622-01					1	-				
			3A5966-01						1	1			
13	Caution Label (H)		439148-01	1	1	1	1	1	1	-			
	Warning Label (H)		4A4795-01								1		
14	Rating Label	F-450MAH	3A1834-01	1	1	-							
			3A2543-01			1	1	-					
			3A4621-01					1	-				
			3A5965-01						1	1			
		F-450MAH-C	3A1834-02	1	-								
			3A2543-02		1	1	1	-					
			3A4621-02					1	-				
			3A5965-02						1	1			
15	Fuse Label (GM)		4A4278-01	1	1	1	1	1	1	1			
16	R404A Label		4A0960-01	1	1	1	1	1	-				

## H. Accessories & Packaging

### F-450MAH(-C)

L-0 to A-1

Title: <b>H. Accessories &amp; Packaging</b> Model: <b>F-450MAH(-C)</b>												
Index No.	Description	Material or Model Number	Part Number	Required Number								
				L-0 to A-1								
1	Instruction Manual		<a href="#">91A2BE10E</a>	1								
2	Universal Brace		<a href="#">4A0363-01</a>	2								
2a	Hex Head Bolt	5x12, SS	<a href="#">7B02-0512</a>	2								
<b>Packaging</b>												
	Packaging		<a href="#">1A0531A08</a>									