

# Hoshizaki America, Inc.

## Professional Series Refrigerated Kitchen Equipment

Models  
FH2-SSB(-HD)



“A Superior Degree  
of Reliability”

[www.hoshizaki.com](http://www.hoshizaki.com)

## PARTS LIST



Number: 71230  
Issued: 3-8-1999  
Revised: 9-9-2015

## CONTENTS

Auxiliary Codes.....	3
Note About Ordering Parts .....	3
A. Main Assembly .....	4
B. Refrigeration Circuit.....	6
Evaporator Assembly.....	7
Condenser And Condenser Fan Assembly.....	8
Condenser And Condenser Fan Assembly.....	9
C. Body-Final .....	12
D. Control Box Assembly.....	16
E. Right Door .....	17
F. Left Door .....	19
G. Vertical Mullion.....	21
H. Upper Right (UR) Half Door .....	24
J. Lower Right (LR) Half Door.....	25
K. Upper Left (UL) Half Door.....	26
L. Lower Left (LL) Half Door.....	27
M. Cross Mullion .....	28
N. Accessories & Labels .....	31

## Auxiliary Codes

### FH2-SSB

H-0 October 1998  
J-0 December 1998  
J-1 September 1999  
J-2 October 1999  
L-5 March 2001  
M-5 February 2002  
M-6 March 2002  
M-7 September 2002  
N-5 December 2002  
N-6 January 2003  
P-5 March 2004  
P-6 August 2004  
Q-5 December 2004  
R-5 December 2005  
S-5 April 2007  
T-5 January 2008  
T-6 September 2008  
U-5 March 2009  
V-5 January 2010  
A-0 December 2010  
A-5 January 2011  
B-5 February 2012  
C-5 April 2013

### FH2-SSB-HD

J-1 October 1999  
L-5 April 2001  
M-6 March 2002  
M-7 August 2002  
N-6 January 2003  
P-5 December 2003  
P-6 August 2004  
Q-5 December 2004  
R-5 April 2005  
S-5 May 2007  
T-5 May 2008  
V-5 July 2010  
A-5 February 2011  
B-5 February 2012  
C-5 April 2013

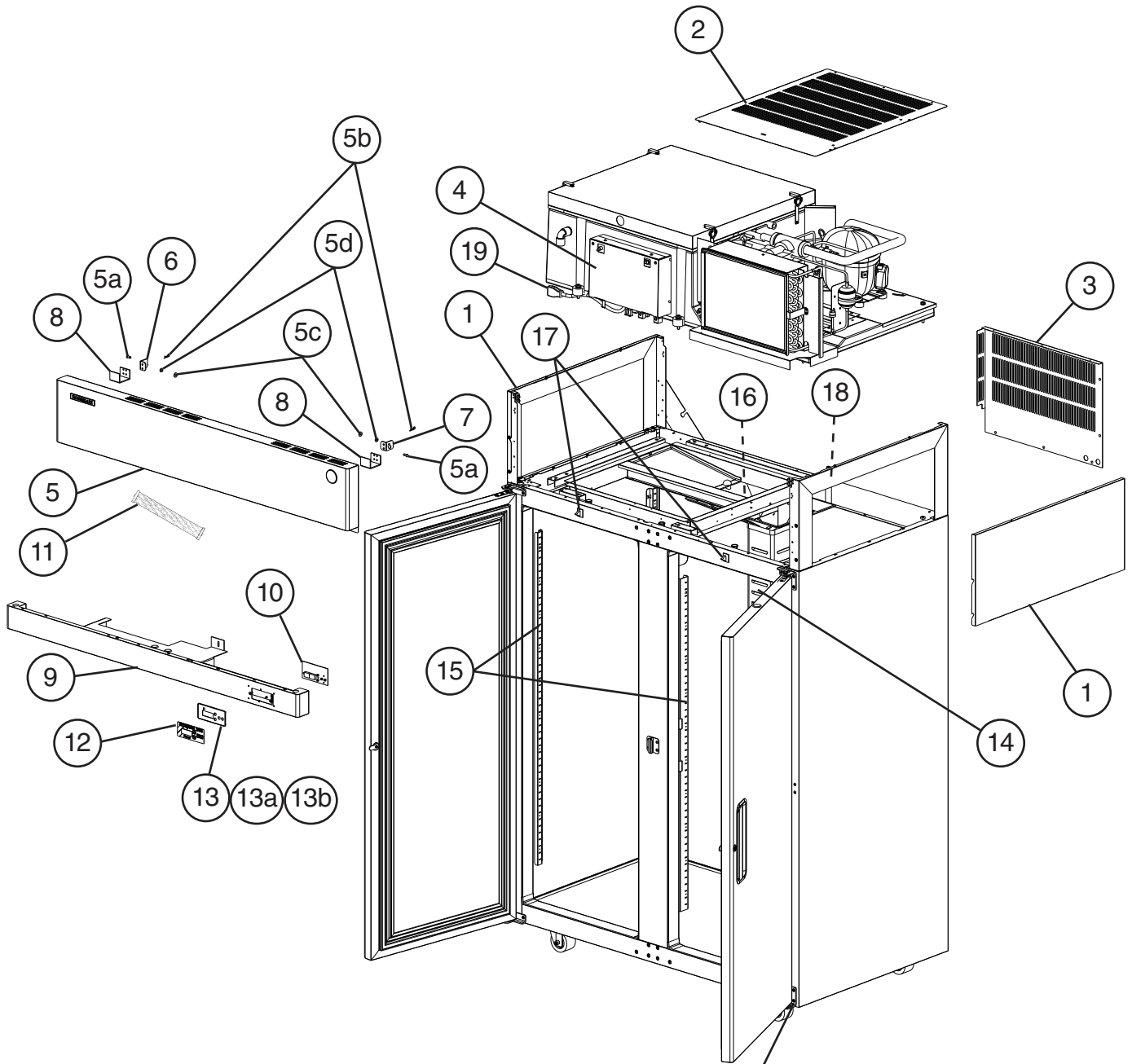
## Auxiliary Code Breakdown

The auxiliary code is the first two characters in the serial number. The first character indicates the year. Years progress or regress in alphabetical order. The series runs from "A" through "V" and the letters "I" and "O" are skipped. The second character indicates significant part changes within a year. Base is "5" and this number advances for each change. In cases where there is a letter in parentheses, this designates the month. This is the last character in the serial number. The series runs from "(A)" through "(M)" and the letter "(I)" is skipped. This designation is only included when identifying a parts change within an auxiliary code.

## Note About Ordering Parts

Most assemblies cannot be ordered as complete units; parts in the assemblies generally must be ordered separately.

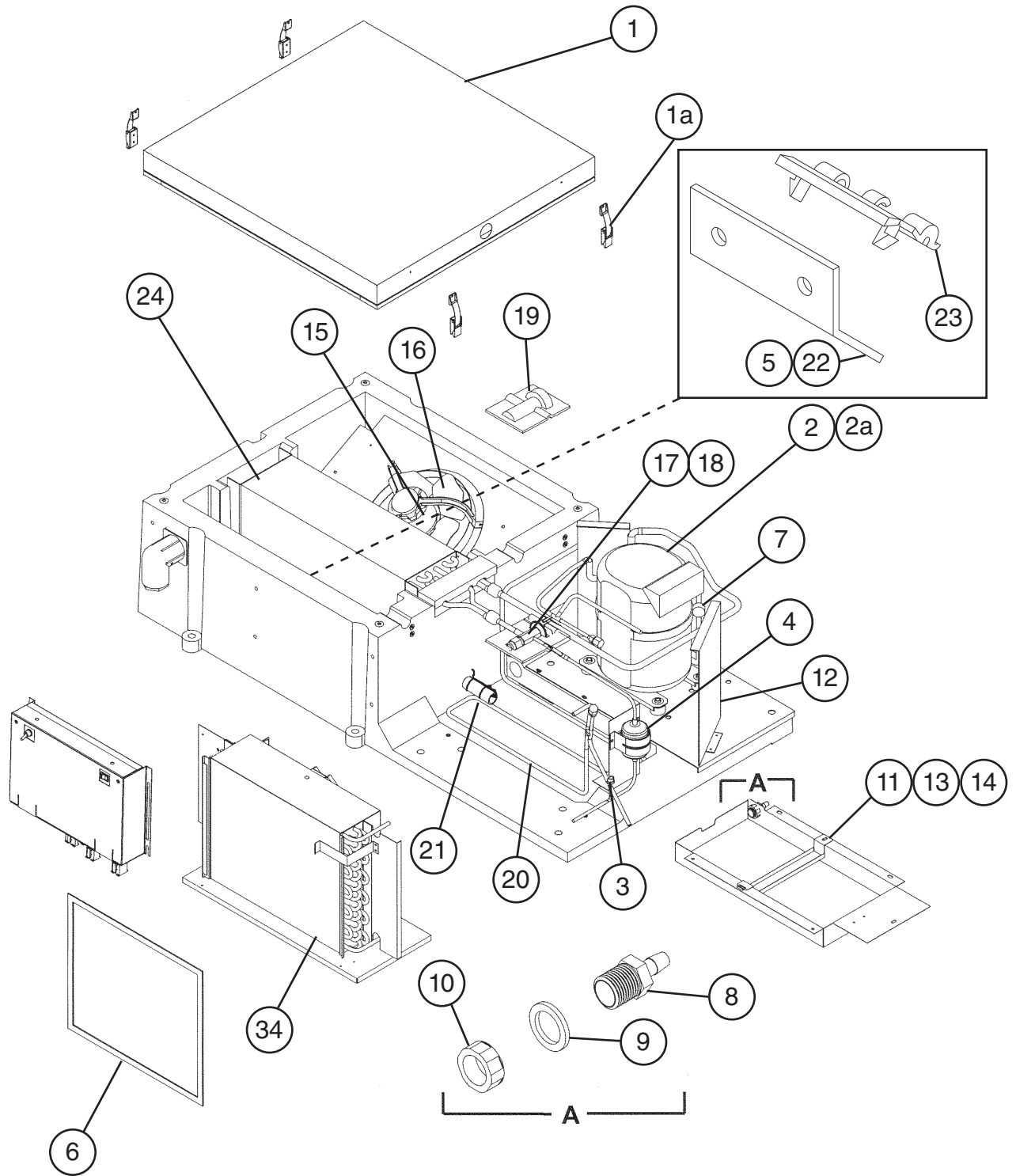
**A. Main Assembly**  
**FH2-SSB(-HD)**  
 H-0 to C-5



For Hinges, see section "C"  
 For Full Doors, see sections "E" and "F"  
 For Half Doors, see sections "H", "J", "K", and "L"

Title: A. Main Assembly Model: FH2-SSB(-HD)												
Index No.	Description	Material or Model Number	Part Number	Required Number								
				H-0 to J-2	L-5	M-5 to N-5	N-6 to P-5	P-6	Q-5 to U-5 (K)	U-5 (L) to C-5		
1	Top Side Panel		2A0615-02	2	-							
			2A1800-01		2	2	2	2	2	2		
2	Top Cover		2A1118-01	1	-							
			2A1118-03		1	1	1	1	1	1		
3	Rear Cover		2A1117-01	1	1	1	1	1	1	1		
4	Control Box Cover		2A1031-01	1	1	1	1	1	1	1		
5	Front Panel		1A0040-01	1	-							
			1A0624-02		1	1	1	1	1	1	1	
5a	Clevis Pin		8907-0102		2	2	2	2	2	2	2	
5b	Cotter Pin		8907-0103		2	2	2	2	2	2	2	
5c	Flat Washer		4A0665-03		2	2	2	2	2	2	2	
5d	Hinge Spacer		4A2473-01		2	2	2	2	2	2	2	
6	Left Front Panel Hinge		4A2153-01		1	1	1	1	1	1	1	
7	Right Front Panel Hinge		4A2154-01		1	1	1	1	1	1	1	
8	Hinge Channel		4A2170-01		2	2	2	2	2	2	2	
9	Control Panel (Painted)		3A107G01	1	-							
			1A0626G01		1	1	-					
	Control Panel		1A0835-01				1	1	1	1		
10	Display Board		2A0883-01	1	1	1	1	1	1	1	1	
11	Ribbon Cable		4A1106-02	1	1	1	1	1	1	1	1	
12	Display Label		4A1558-02	1	1	-						
			3A2850-02			1	1	1	-			
			3A5788-02						1	1		
13	Display Board Mount		3A0823-01	1	1	1	1	1	1	1	1	
13a	Palnut		4A1398-01	6	6	6	6	6	6	6	6	
13b	Nylon Screw		4A1397-01	4	4	4	4	4	4	4	4	
14	Bottom Air Distributor		1A0143-01	1	1	1	1	1	-			
			1A0985-01						1	1		
15	Pilaster		3A0145-01	6	6	6	6	6	6	6	6	
16	Top Air Distributor		1A0152-02	1	1	1	1	1	1	1	1	
17	Door Switch	FH2-SSB	4A0487-01	2	-							
			3A1386-01		2	-						
			3A1826-01			2	2	2	2	2	2	
		FH2-SSB-HD	3A1386-01		4	4	-					
			3A1826-01				4	4	4	4		
18	Vinyl Hose	L=1700 mm	7716-0913	1	-							
			7730I3812		1	1	1	1	1	1	1	
19	Power Cord		4A1543-01	1	1	1	1	1	1	1	1	

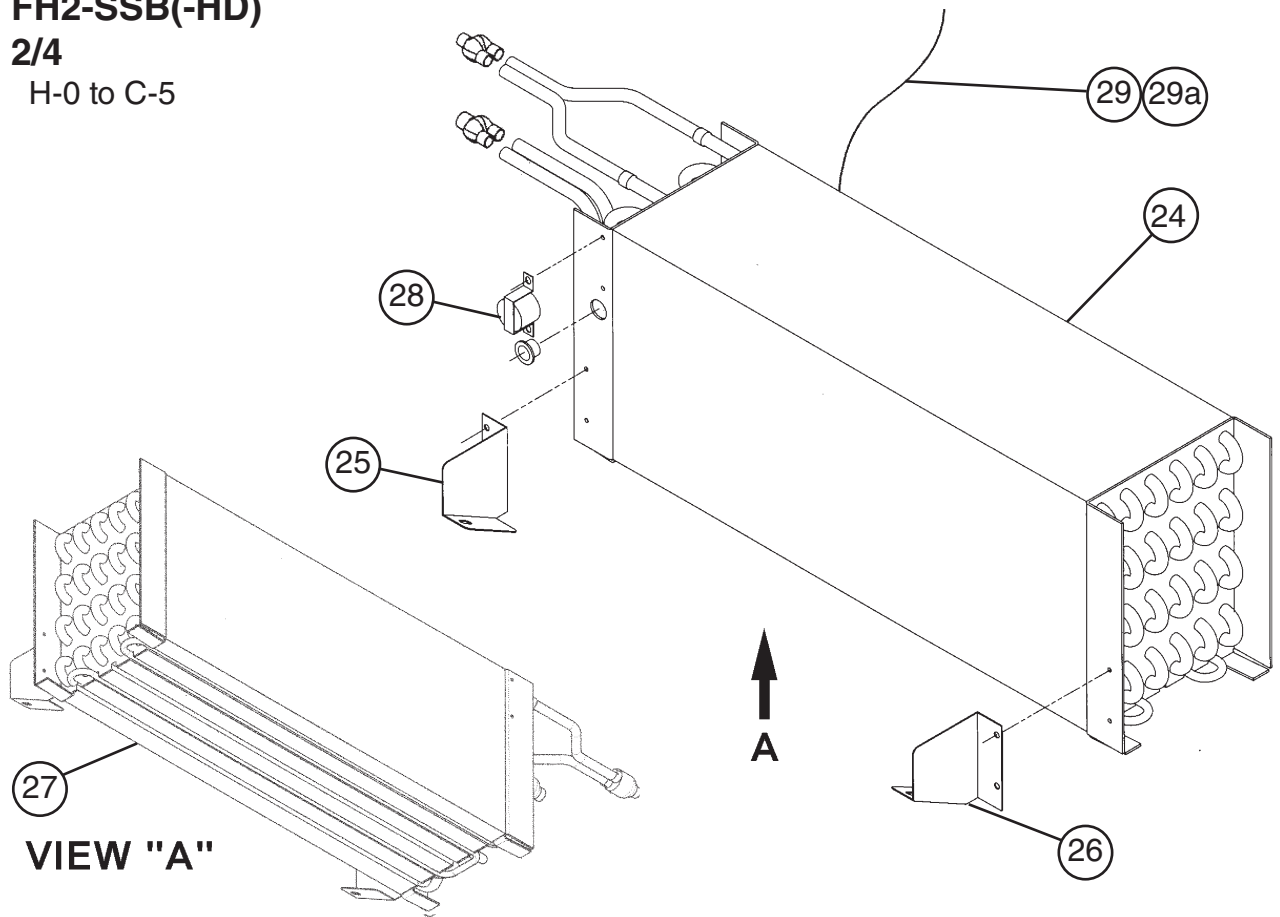
**B. Refrigeration Circuit**  
**FH2-SSB(-HD)**  
 1/4  
 H-0 to C-5



**B. Refrigeration Circuit  
Evaporator Assembly  
FH2-SSB(-HD)**

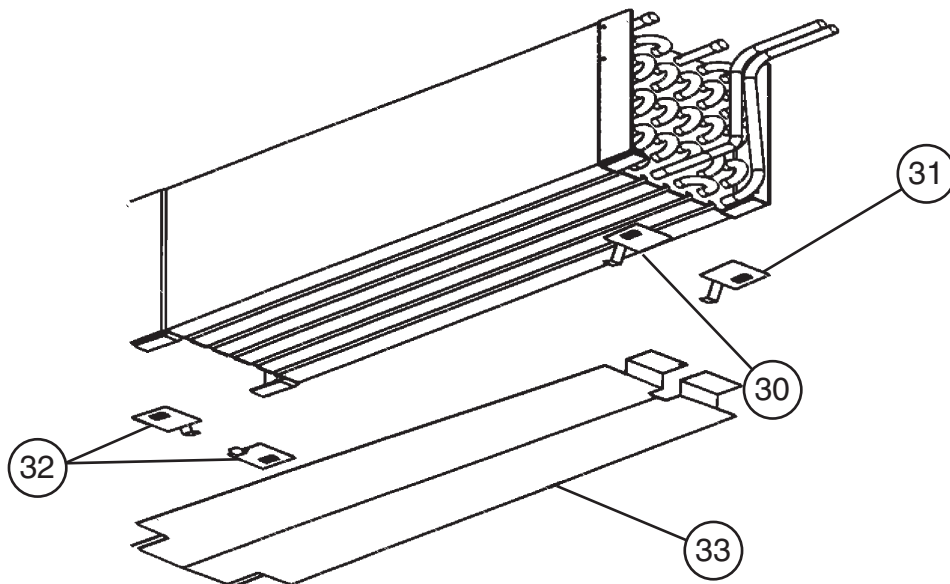
**2/4**

H-0 to C-5



**VIEW "A"**

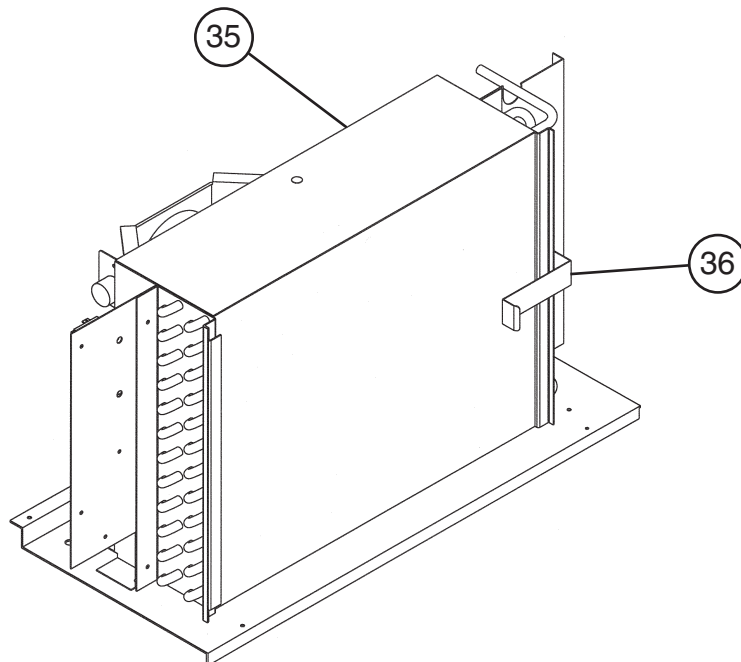
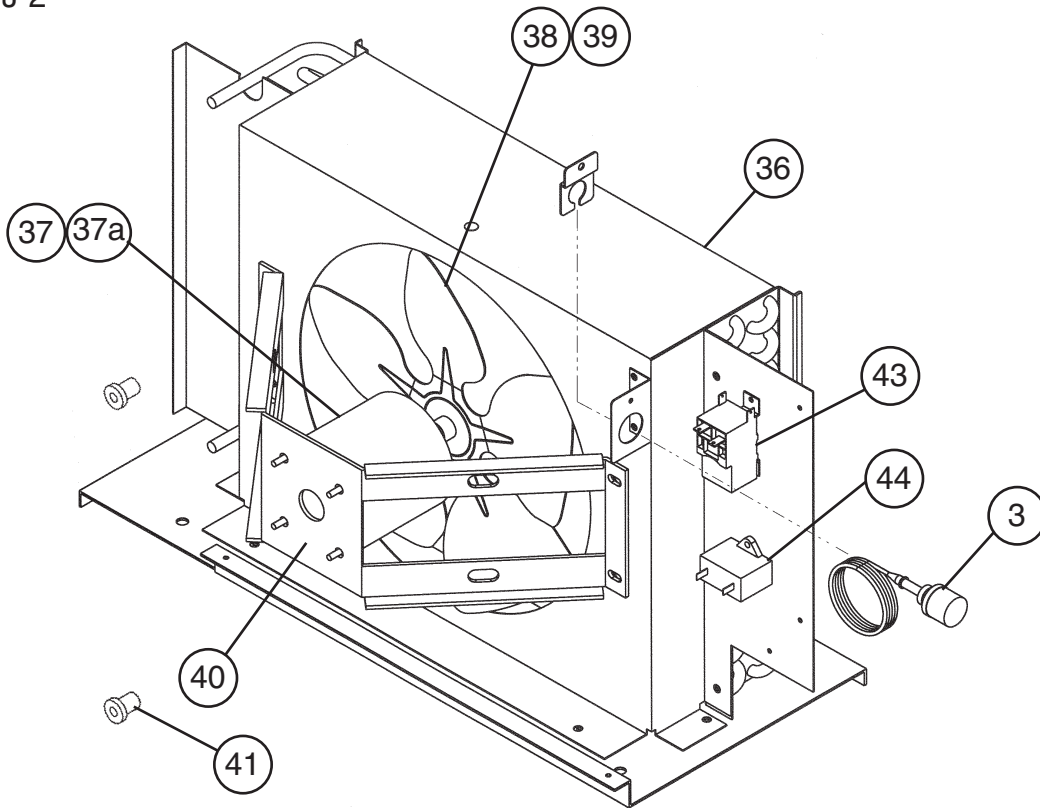
These additional parts added to FH2-SSB(-HD) Evaporator Assembly at aux. code M-6



**B. Refrigeration Circuit**  
**Condenser And Condenser Fan Assembly**  
**FH2-SSB(-HD)**

**3/4**

H-0 to J-2

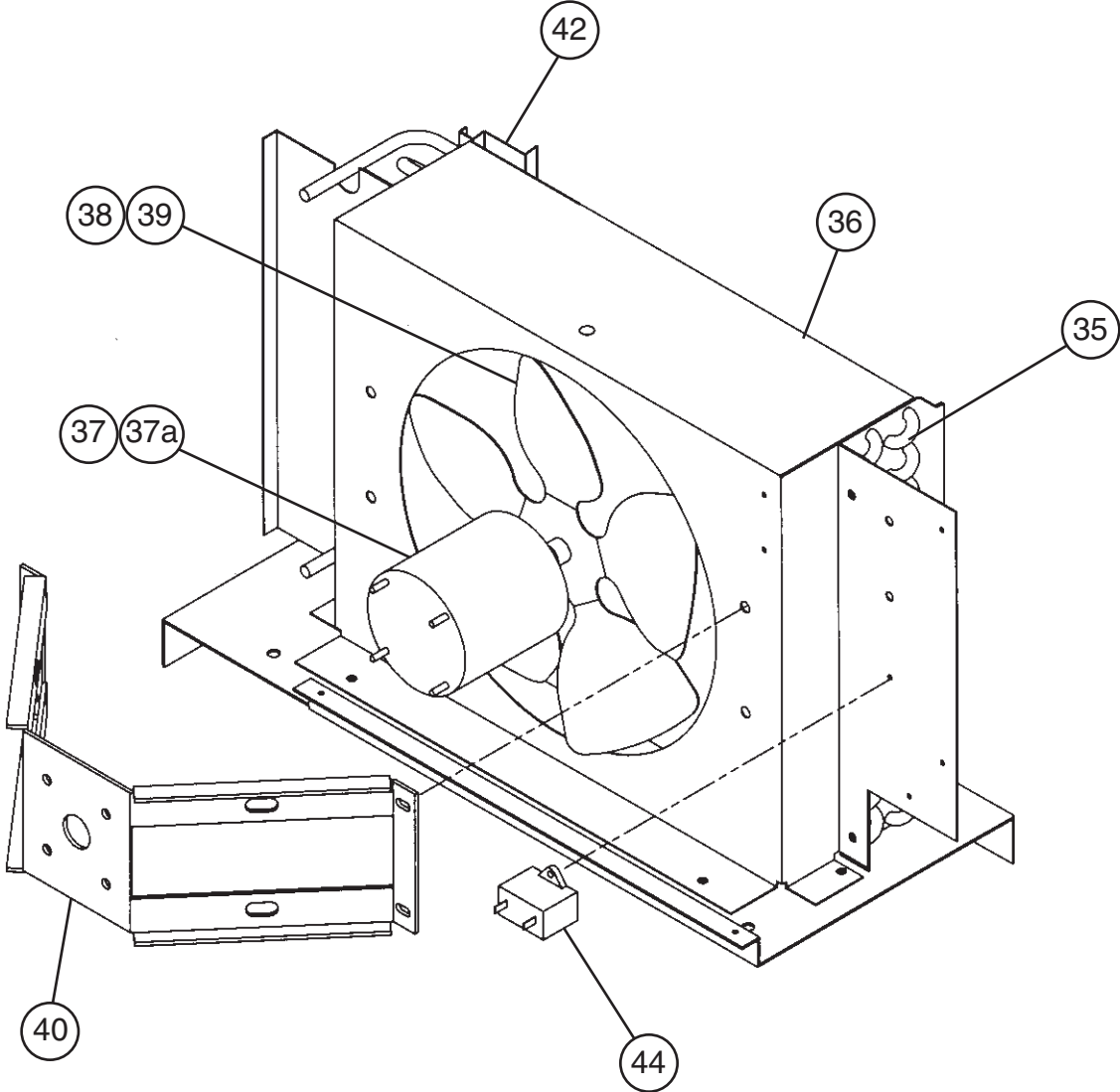




**B. Refrigeration Circuit**  
**Condenser And Condenser Fan Assembly**  
**FH2-SSB(-HD)**

4/4

L-5 to C-5



Title: B. Refrigeration Circuit Model: FH2-SSB(-HD)												
Index No.	Description	Material or Model Number	Part Number	Required Number								
				H-0	J-0 to J-1	J-2	L-5	M-5	M-6 to P-5	P-6 to T-5	T-6 to B-5	C-5
1	Evaporator Case Cover		2A0245G01	1	1	1	1	1	1	1	1	-
			2A4326A01									1
1a	Draw Latch		4A1710-01		4	4	4	4	4	4	4	-
			4A3988-01									4
2	Compressor		4A1346-01	1	1	1	1	1	1	1	1	1
			3A7123-01									
2a	Compressor Protector		4A1877-05	1	1	1	1	1	1	1	1	1
			3A7127-01									
3	High-Pressure Switch		3A0335-03	1	-							
			3A0335-02		1	1	1	-				
			4A2516-02					1	1	1	1	1
4	Drier		4A0924-01	1	1	1	1	1	1	1	1	1
5	Cabinet Thermistor		4A1429-02	1	1	1	-					
			4A1429-01				1	1	1	1	1	1
6	Condenser Filter		3A0277-01	1	1	1	-					
			3A0277-02				1	1	1	1	1	1
7	Clean Filter Thermostat		4A0965-01	1	1	1	1	1	1	1	1	1
8	Drain Overflow Fitting		4A0664-01	1	1	1	-					
			4A2182-01				1	1	1	1	1	1
9	Drain Overflow Washer		4A0665-01	1	1	1	-					
	Rubber Gasket		413854-03				1	1	1	1	1	1
10	Drain Fitting Nut		4A0666-01	1	1	1	1	1	1	1	1	1
11	Condenser Coil Gasket		4A0455-01	1	1	1	1	1	1	1	1	1
12	Air Divider		3A1297-02	1	1	1	1	-				
			3A1297-01					1	1	1	1	1
13	Evaporator Drain Pan		2A0200-01	1	1	1	-					
			2A0200-02				1	1	1	1	1	1
14	Condensate Coil Strap		3A0413-01	1	1	1	-					
			3A0413-03				1	1	1	1	1	1
15	Fan Blade		3A0438-01	1	1	1	1	1	1	1	1	1
16	Evaporator Fan Motor		4A0413-01	1	1	1	1	1	1	1	1	1
17	Thermostatic Expansion Valve		4A0922-01	1	1	1	1	1	1	1	1	1
18	Thermostatic Expansion Valve Cover A		3A0372-01	1	1	1	1	1	1	1	1	-
		(includes item19)	4A4646-01									1
19	Thermostatic Expansion Valve Cover B		3A0372-02	1	1	1	1	1	1	1	1	-
20	Condensate Coil		2A1856-01				1	1	1	1	1	1
21	Drain Heater	10W, 115VAC	4A2975-01							1	1	1
22	Thermistor Bracket A		433964-01	1	1	1	1	1	1	1	1	1

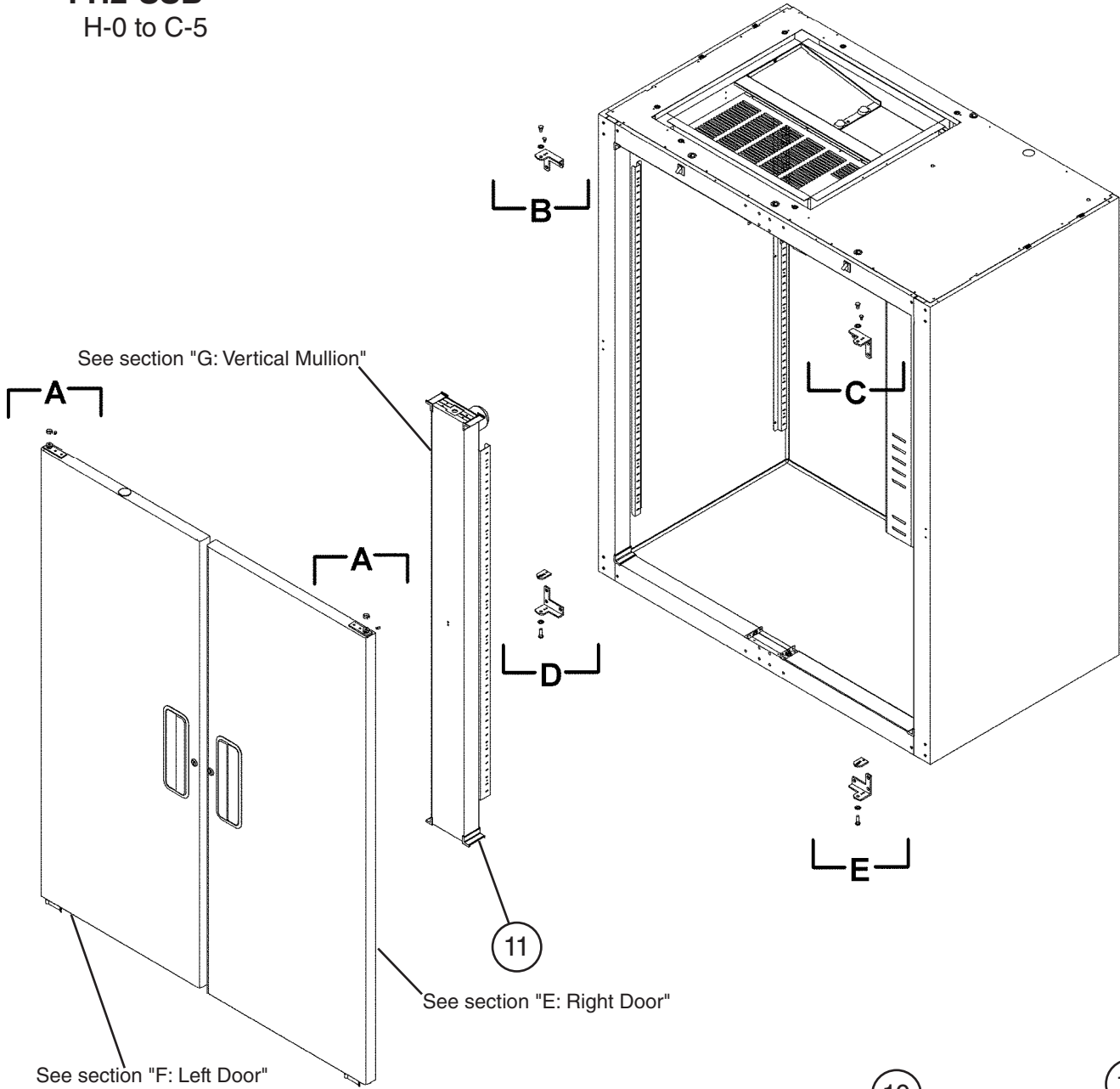
Title: B. Refrigeration Circuit Model: FH2-SSB(-HD)												
Index No.	Description	Material or Model Number	Part Number	Required Number								
				H-0	J-0 to J-1	J-2	L-5	M-5	M-6 to P-5	P-6 to T-5	T-6 to B-5	C-5
23	Thermistor Bracket B		433920-01	1	1	1	1	1	1	1	1	1
<b>Evaporator Assembly</b>												
24	Evaporator		2A0636-01	1	1	1	1	1	1	1	1	1
25	Right Evaporator Shroud Bracket		4A0545-01	1	1	1	1	1	1	-		
26	Left Evaporator Shroud Bracket		4A0548-01	1	1	1	1	1	1	-		
27	Defrost Heater		3A0591-01	1	1	1	1	1	1	1	1	1
28	Defrost Thermostat		4A0954-02	1	1	1	1	1	1	1	1	1
29	Defrost Thermistor		4A1428-01	1	1	1	1	1	1	1	1	1
29a	Thermistor Clip		320418-01	1	1	1	1	1	1	1	1	1
30	Evaporator Support Clip A	FH2-SSB-HD (see installation instructions below)	4A2826-01						1	1	1	1
31	Evaporator Support Clip B		4A2827-01						1	1	1	1
32	Evaporator Support Clip C		4A2828-01						2	2	2	2
33	Heat Shield		3A1853G01						1	1	1	1
<b>Condenser Assembly</b>												
34	Condenser		2A0638-01	1	1	1	1	1	1	1	1	1
35	Condenser Shroud		2A0639-02	1	-							
			2A1491-01		1	1	1	1	1	1	1	1
36	Fan Motor		4A0815-01	1	-							
			440911-01		1	1	1	1	1	-		
			4A3158-01							1	1	1
36a	Self Locking Nut	8-32	7N2110832		4	4	4	4	4	4	4	4
37	Fan Blade		3A0608-01	1	-							
			4A1865-01		1	1	1	1	1	1	1	1
38	Hex Nut		4A1345-01	1	1	1	-					
39	Condenser Fan Motor Bracket		3A0457-01	1	-							
			3A1298-01		1	-						
			2A1668-01			1	1	1	1	1	1	1
40	Well Nut		4A0422-01	2	-							
41	Filter Retainer		4A0929-01	1	1	1	-					
			4A2138-01				1	1	1	1	1	1
42	Defrost Backup Thermostat		4A1344-01	1	1	1	1					
43	Fan Motor Capacitor	5MFD, 250VAC	443192-02	1	1	1	1	1	1	1	1	1

### Installation Instructions for Parts 30-33

1. Remove the original heat shield by lifting the evaporator up and then sliding the heat shield out.
2. Install the new heat shield (part #33) into the rotocast drain pan.
3. Install the support clips (part #32) onto the hairpin end of the evaporator as shown in the illustration.
4. Install the remaining support clips (parts #30 and #31) on the return bend end (same side as inlet and outlet tubes) as shown in the illustration.

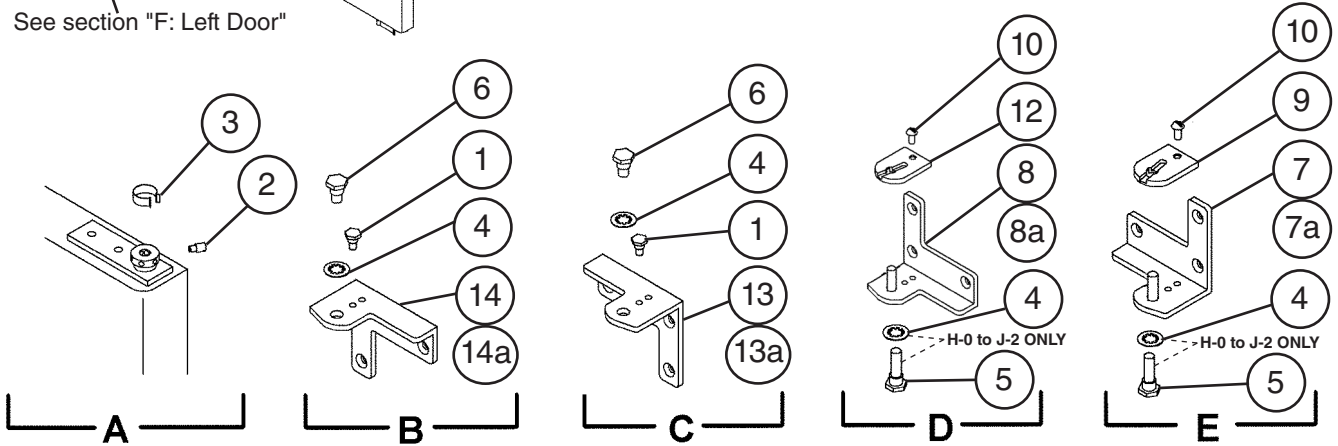
**NOTE:** All clips are shown in the correct orientation for installation. The parts slide onto the evaporator bracket using the tab on the support clip.

**C. Body-Final**  
**FH2-SSB**  
 H-0 to C-5



See section "F: Left Door"

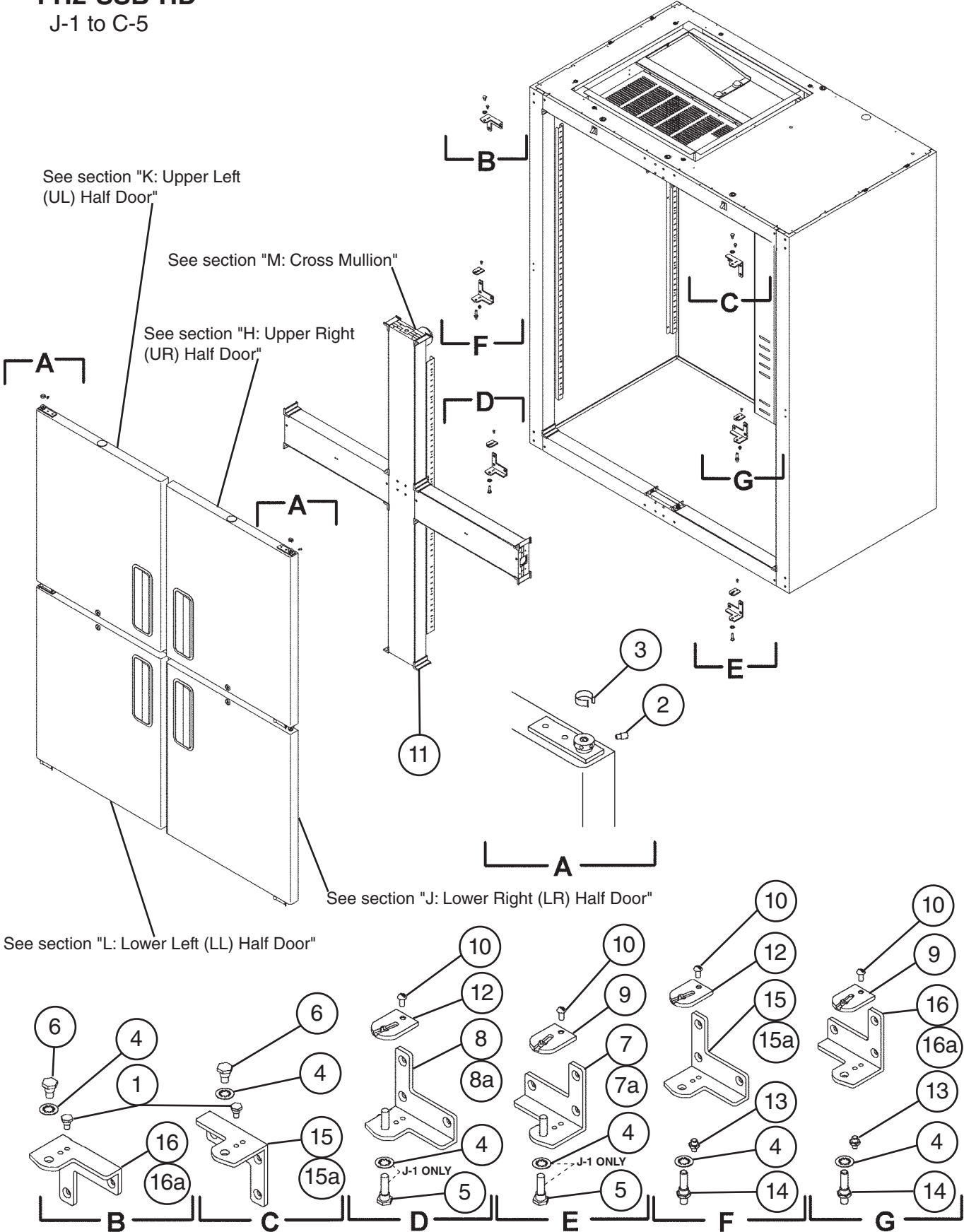
See section "E: Right Door"



Title: C. Body-Final Model: FH2-SSB											
Index No.	Description	Material or Model Number	Part Number	Required Number							
				H-0 to J-2	L-5 to C-5						
1	Hinge Stop Pin		4A0444-01	2	-						
			4A2180-01		2						
2	Hinge Tension Screw		4A0446-01	2	2						
3	Hinge Bushing Cover		4A0445-01	2	2						
4	Hinge Lock Washer		4A0553-01	4	2						
5	Bottom Hinge Pivot Pin		4A0443-01	2	-						
6	Top Hinge Pivot Pin		4A0442-01	2	-						
			4A2179-01		2						
7	Lower Right (LR) Door Hinge Bracket		3A1626-01	1	1						
7a	Countersunk Screw	5x20, SS	7C42-0520	3	3						
8	Lower Left (LL) Door Hinge Bracket		3A1627-01	1	1						
8a	Countersunk Screw	5x20, SS	7C42-0520	3	3						
9	Right Hinge Stop Plate		4A0441-01	1	1						
10	Screw Stop Plate		4A0483-01	2	2						
11	Cover Corner		3A0221-01	8	-						
			3A1751-01		8						
12	Left Hinge Stop Plate		4A0441-02	1	1						
13	Upper Right (UR) Door Hinge Bracket		3A1580-01	1	1						
13a	Countersunk Screw	5x20, SS	7C42-0520	3	3						
14	Upper Left (UL) Door Hinge Bracket		3A1581-01	1	1						
14a	Countersunk Screw	5x20, SS	7C42-0520	3	3						

# C. Body-Final FH2-SSB-HD

J-1 to C-5



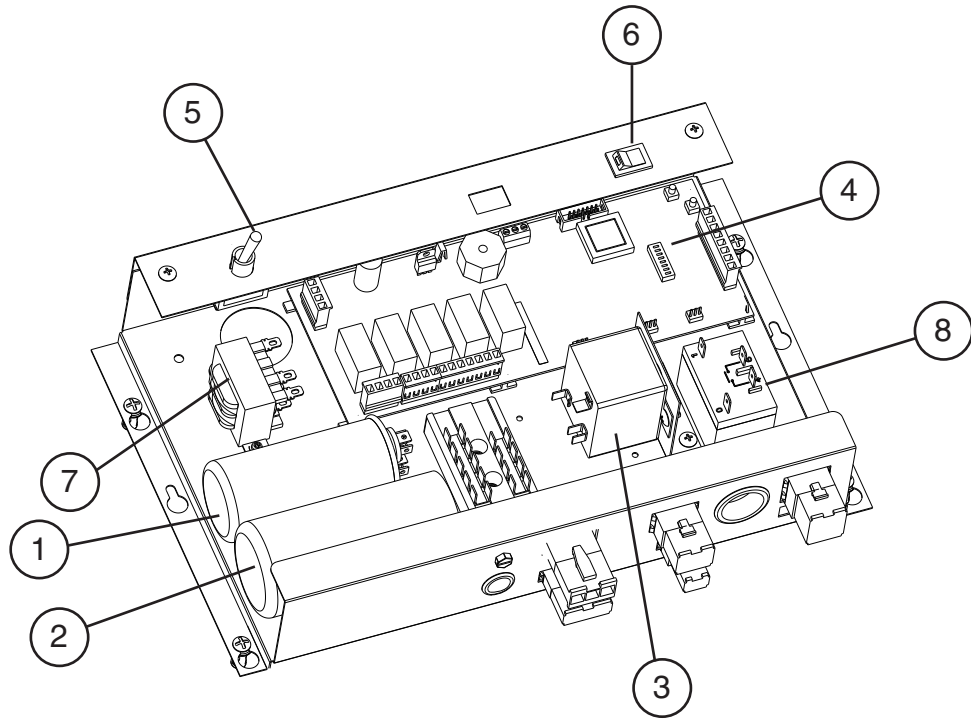
**Title: C. Body-Final Model: FH2-SSB-HD**

Index No.	Description	Material or Model Number	Part Number	Required Number									
				J-1	J-2 to C-5								
1	Hinge Stop Pin		4A0444-01	2	-								
			4A2180-01		2								
2	Hinge Tension Screw		4A0446-01	4	4								
3	Hinge Bushing Cover		4A0445-01	4	4								
4	Hinge Lock Washer		4A0553-01	6	4								
5	Bottom Hinge Pivot Pin		4A0443-01	2	-								
6	Top Hinge Pivot Pin		4A0442-01	2	-								
			4A2179-01		2								
7	Lower Right (LR) Door Hinge Bracket		3A1626-01	1	1								
7a	Countersunk Screw	5x20, SS	7C42-0520	3	3								
8	Lower Left (LL) Door Hinge Bracket		3A1627-01	1	1								
8a	Countersunk Screw	5x20, SS	7C42-0520	3	3								
9	Right Hinge Stop Plate		4A0441-01	2	2								
10	Stop Plate Screw		4A0483-01	4	4								
11	Corner Cover		3A0221-01	16	-								
			3A1751-01		16								
12	Left Hinge Stop Plate		4A0441-02	2	2								
13	Stop Pin		4A1734-01	2	2								
14	Pivot Pin		4A1735-01	2	2								
15	Bracket Door Hinge (LL, UR)		3A1580-01	2	2								
15a	Countersunk Screw	5x20, SS	7C42-0520	6	6								
16	Bracket Door Hinge (UL, LR)		3A1581-01	2	2								
16a	Countersunk Screw	5x20, SS	7C42-0520	6	6								

# D. Control Box Assembly

## FH2-SSB(-HD)

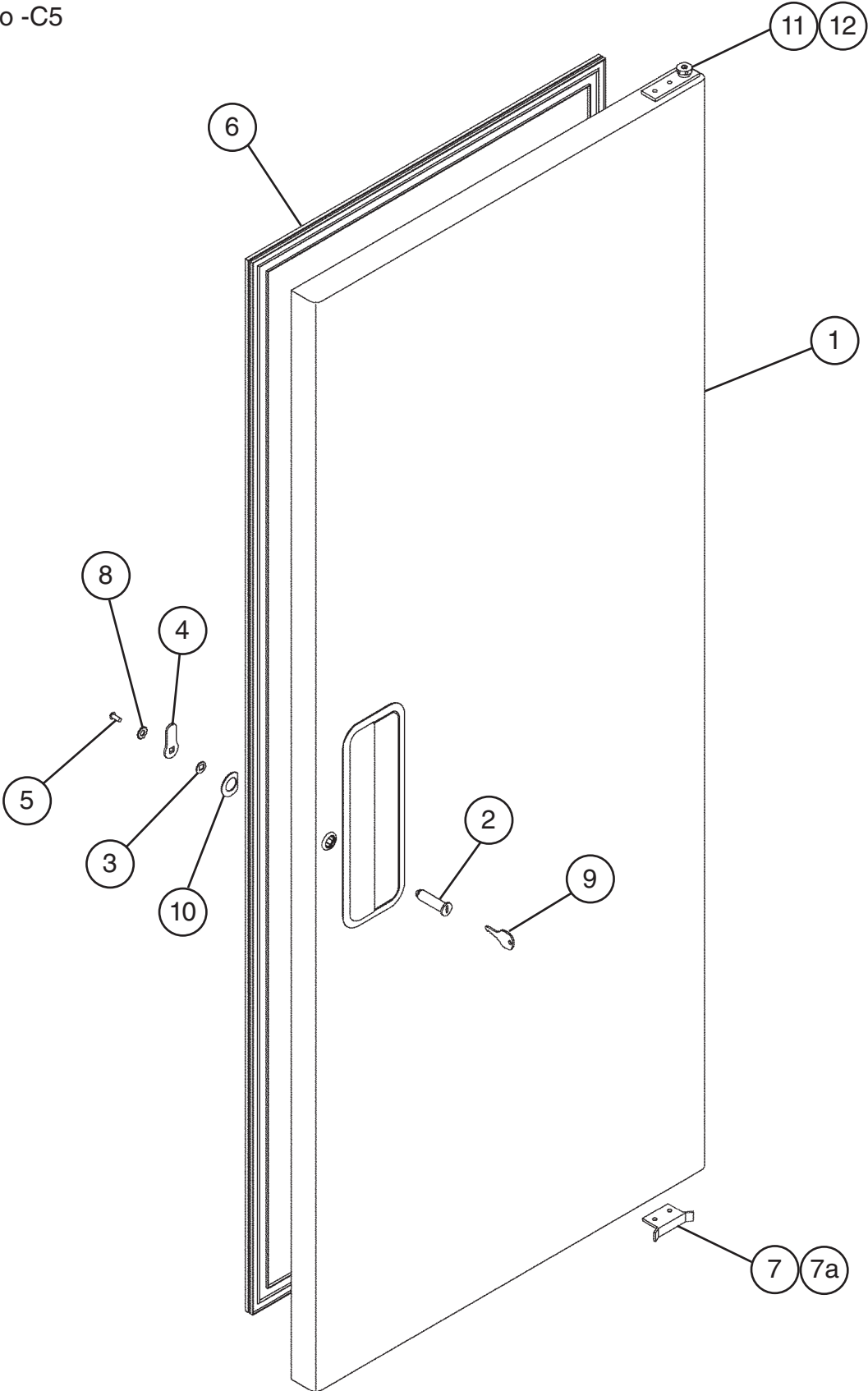
H-0 to C-5



Title: D. Control Box Assembly		Model: FH2-SSB		Required Number						
Index No.	Description	Material or Model Number	Part Number	H-0	J-0 to J-2	L-5	M-5 to B-5	C-5		
				1	Run Capacitor	25MFD, 370VAC	<a href="#">439943-02</a>	1	1	1
		35MFD, 370VAC	<a href="#">3A2005-06</a>				1	-		
			<a href="#">3A2005-05</a>					1		
2	Start Capacitor	88-106MFD, 330VAC	<a href="#">3A0076-07</a>	1	1	1	1	-		
		243-292MFD, 330VAC	<a href="#">3A0076-10</a>					1		
3	Start Relay		<a href="#">434172-01</a>	1	-					
			<a href="#">4A1107-13</a>		1	1	1	-		
			<a href="#">4A1107-20</a>					1		
4	Control Board		<a href="#">2A2862-24</a>	1	1	1	1	1		
5	Control Switch		<a href="#">4A0424-01</a>	1	1	1	1	1		
6	Power Switch		<a href="#">4A0418-01</a>	1	1	1	1	1		
7	Control Transformer		<a href="#">3A0172-01</a>	1	-					
			<a href="#">3A1759-01</a>		1	1	1	1		
8	Compressor Relay		<a href="#">4A1307-01</a>	1	1	1	1	-		
			<a href="#">4A3140-01</a>					1		



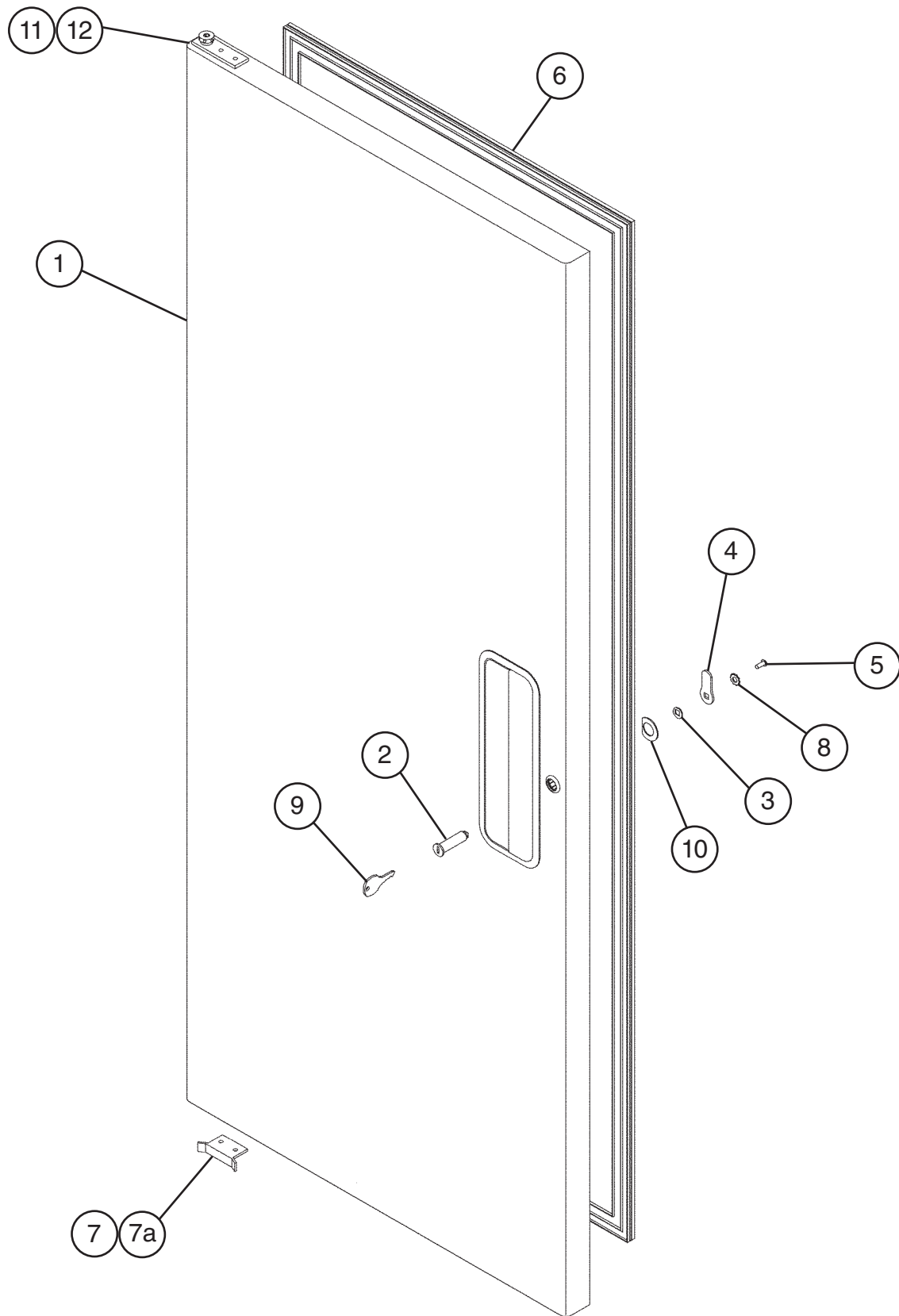
**E. Right Door**  
**FH2-SSB**  
H-0 to -C5



**Title: E. Right Door Model: FH2-SSB**

Index No.	Description	Material or Model Number	Part Number	Required Number									
				H-0	J-0 to J-2	L-5 to M-7	N-5 to A-0	A-5 to C-5					
1	Right Door		1A0317G01	1	1	1	-						
			1A0317G03				1	-					
			2A6545G01					1					
2	Tumbler Lock		4A0462-01	1	1	1	1	1					
3	Stop Washer Lock		4A0458-01	1	1	1	1	1					
4	Door Lock Cam		4A0228-01	1	1	1	1	1					
5	Screw Lock		4A0461-01	1	1	1	1	1					
6	Door Gasket		3A0273-01	1	1	1	1	-					
			2A5192-07					1					
7	Door Stop		4A0351-01	1	1	-							
			4A1873-01			1	1	1					
7a	Countersunk Screw		7C42-0520	2	-								
	Truss Head Screw		7C32-0525		2	-							
8	Lock Washer		4A0459-01	1	1	1	1	1					
9	Key Lock		4A0460-01	1	1	1	1	1					
10	Door Lock Washer		4A0670-01	1	1	1	1	1					
11	Hinge Spring		4A3312-01	1	1	1	1	1					
12	Hinge Spring Cartridge		4A0438-01	1	1	1	1	1					

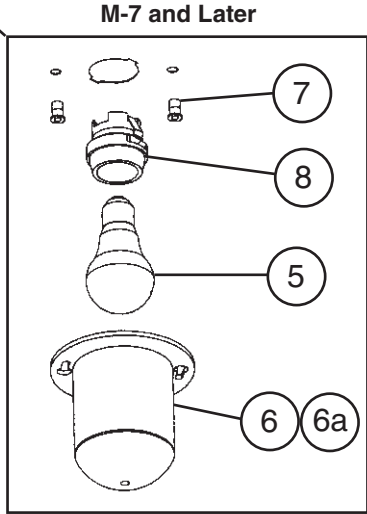
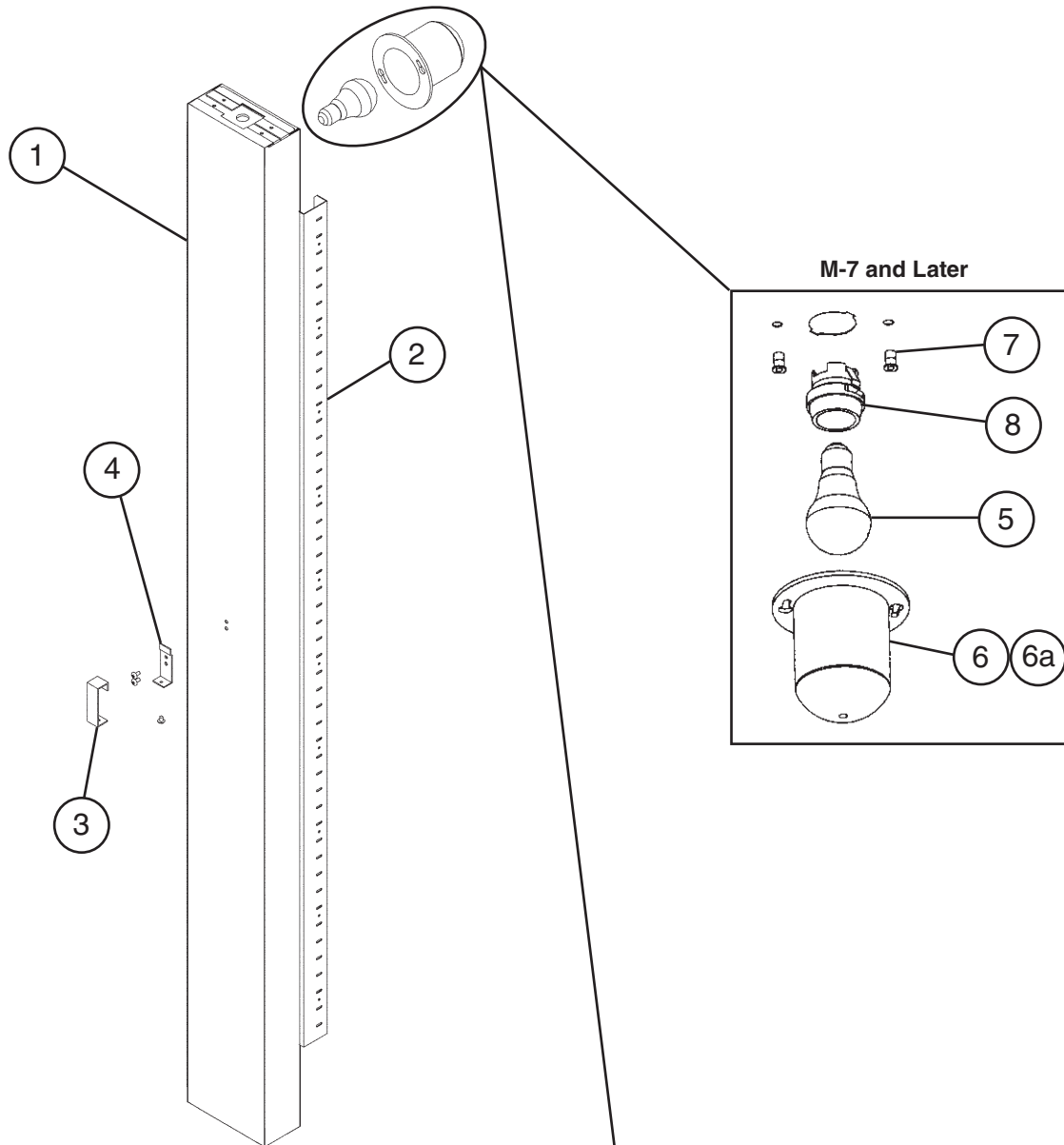
**F. Left Door**  
**FH2-SSB**  
H-0 to C-5



**Title: F. Left Door Model: FH2-SSB**

Index No.	Description	Material or Model Number	Part Number	Required Number											
				H-0	J-0 to J-2	L-5 to M-7	N-6 to A-0	V-5 to C-5							
1	Left Door		1A0317G02	1	1	1	-								
			1A0317G04				1	-							
			2A6546A01					1							
2	Tumbler Lock		4A0462-01	1	1	1	1	1							
3	Stop Washer Lock		4A0458-01	1	1	1	1	1							
4	Door Lock Cam-		4A0228-01	1	1	1	1	1							
5	Screw Lock		4A0461-01	1	1	1	1	1							
6	Door Gasket		3A0273-01	1	1	1	1	-							
			2A5192-07					1							
7	Door Stop		4A0351-01	1	1	-									
			4A1873-01			1	1	1							
7a	Countersunk Screw		7C42-0520	2	-										
	Truss Head Screw		7C32-0525		2	-									
8	Washer Lock		4A0459-01	1	1	1	1	1							
9	Key Lock		4A0460-01	1	1	1	1	1							
10	Door Lock Washer		4A0670-01	1	1	1	1	1							
11	Hinge Spring		4A3312-02	1	1	1	1	1							
12	Hinge Spring Cart		4A0438-02	1	1	1	1	1							

**G. Vertical Mullion**  
**FH2-SSB**  
**1/2**  
H-0 to T-5

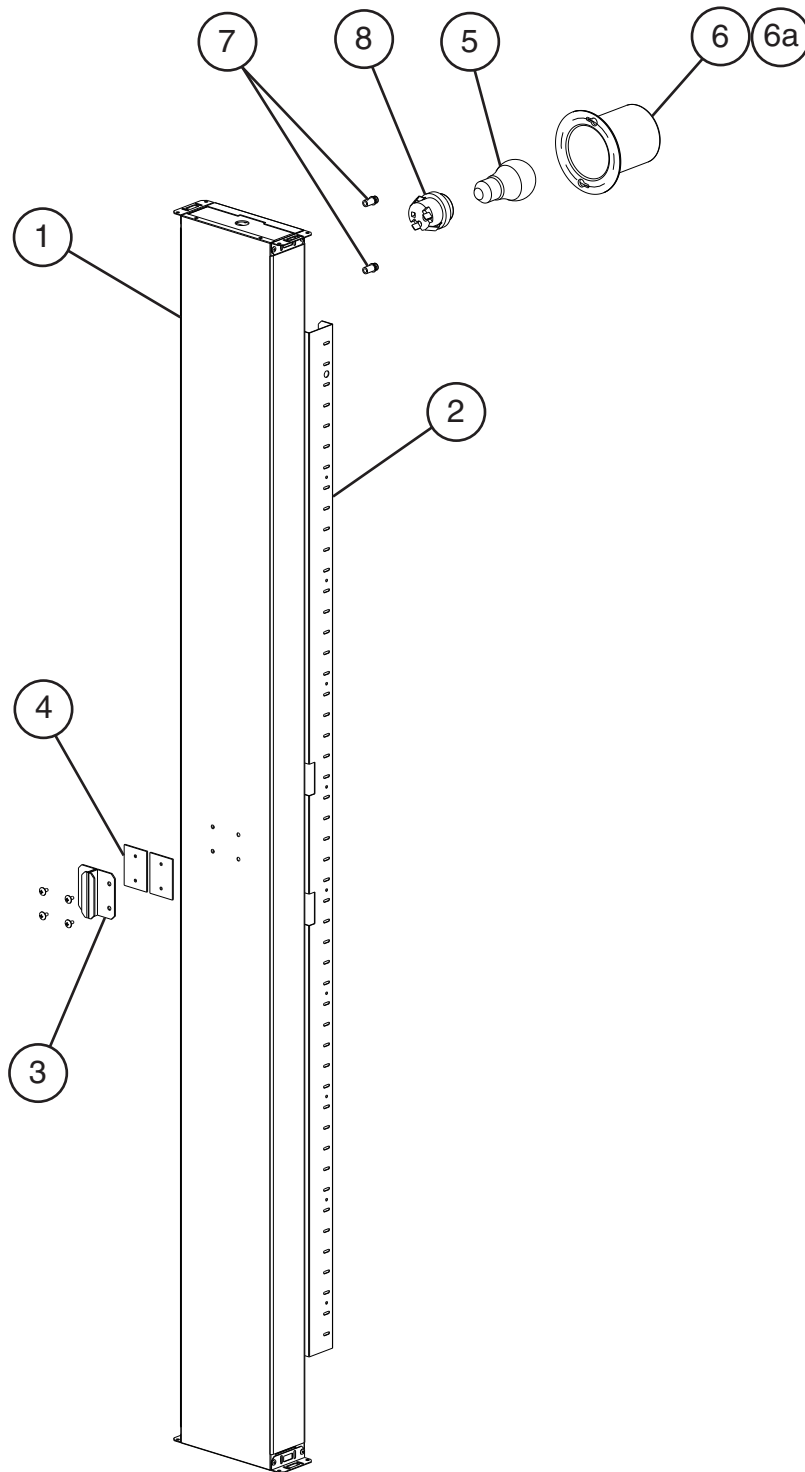


**M-6 and Earlier**

The santoprene light socket was changed to a porcelain lampholder at M-7. This change is non-interchangeable. If the light socket is not operating on a unit with a santoprene light socket, order [HS-3554](#) - Lampholder Conversion Kit.

Note:  
Parts 5, 6 and 6a are not included in HS-3554; they are shown for reference only.

**G. Vertical Mullion**  
**FH2-SSB**  
**2/2**  
T-6 to C5

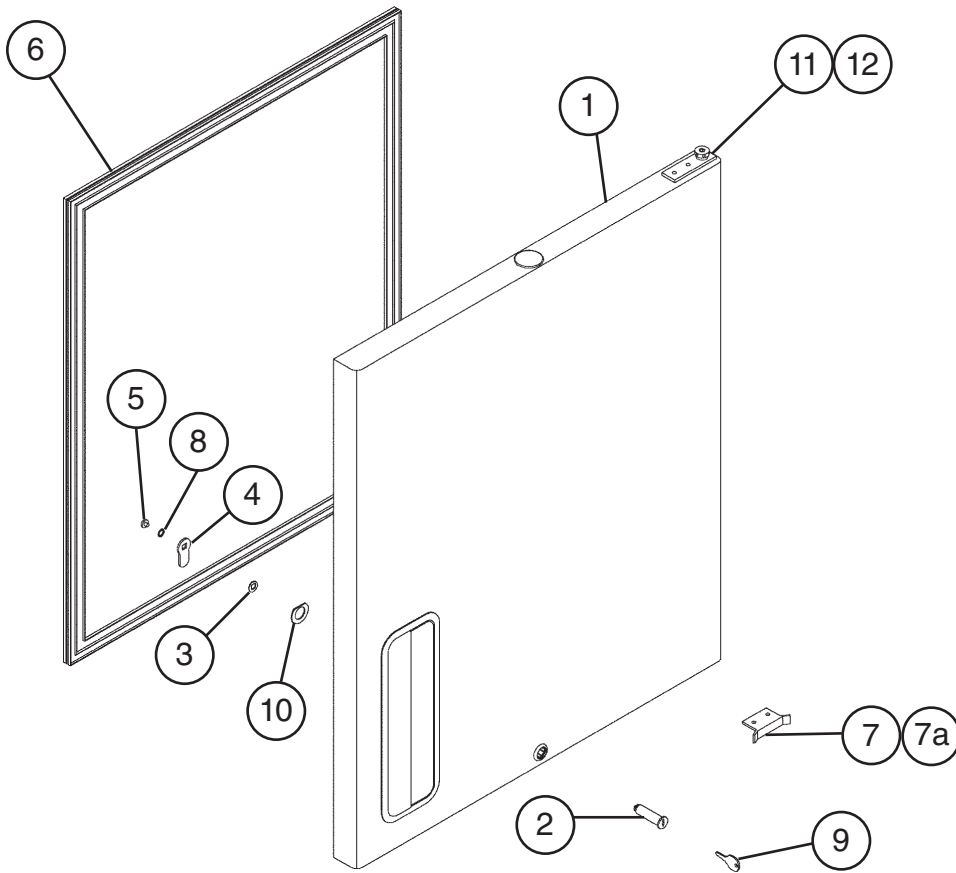


Title: G. Vertical Mullion Model: FH2-SSB												
Index No.	Description	Material or Model Number	Part Number	Required Number								
				H-0	J-0 to L-5	M-5 M-6	M-7 N-5	N-6 to P-6	Q-5 to T-5	T-6 to C-5		
1	Mullion		2A1288G01	1	1	-						
			2A1288G05			1	1	1	1	-		
		(T-6 and later includes items 2 through 8)	2A4765G01							1		
2	Mullion Pilaster		2A0205-01	2	2	2	-					
			2A0205-02				2	2	-			
			2A3246-01						2	2		
3	Front Strike Plate		<a href="#">4A0355-01</a>	1	1	1	1	1	1	-		
			<a href="#">4A4587-01</a>								2	
4	Base Strike Plate		<a href="#">4A0354-01</a>	1	1	1	1	1	1	-		
			4A0472-01								2	
5	Light Bulb		4A0437-01	1	1	1	-					
			<a href="#">4A2420-01</a>				1	1	1	1		
6	Light Shield		<a href="#">4A0465-01</a>	1	1	1	1	1	1	1		
6a	Truss Head Screw		<a href="#">7C32-0510</a>	2	-							
	Cheese Head Screw		<a href="#">7C52-0512</a>		2	2	2	2	2	2		
7	Insert		4A0839-01	Non-interchangeable part change. If light socket is not operating for these codes, order conversion kit <a href="#">HS-3554</a> (below).			2	2	2	2		
8	Lampholder		<a href="#">4A2862-01</a>				1	1	1	1		

HS-3554 - Lampholder Conversion Kit												
Index No.	Description	Material or Model Number	Part Number	Required Number								
				M-6 and Earlier								
HS1	Lampholder Mount Plate		<a href="#">4A2880-01</a>	1								
HS1a	Cheese Head Screw		<a href="#">7C52-0512</a>	2								
HS2	Lampholder		<a href="#">4A2862-01</a>	1								
HS2a	Flag Terminal		8101-18FJ	2								

## H. Upper Right (UR) Half Door FH2-SSB-HD

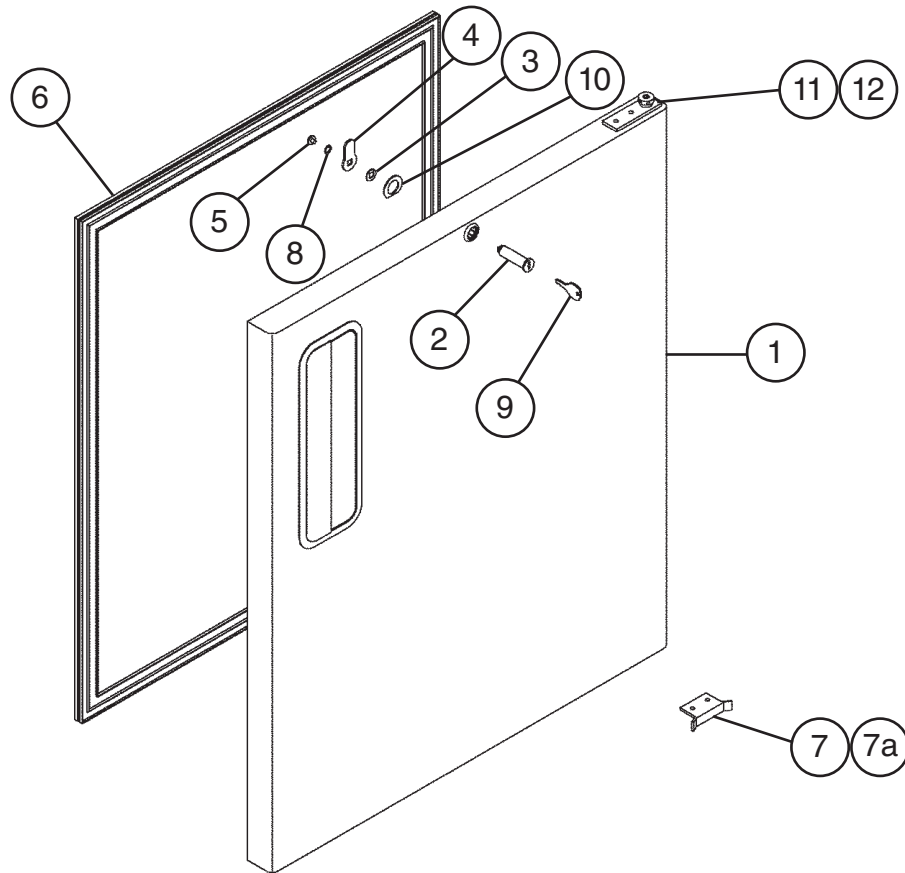
J-1 to C-5



Title: H. Upper Right (UR) Half Door		Model: FH2-SSB-HD		Required Number							
Index No.	Description	Material or Model Number	Part Number	J-1	L-5 to M-7	N-6 to 5-5	T-5 to C-5				
				1	Upper Right (UR) Door		1A0325G01	1	1	-	
			1A0325G03			1	-				
		(T-5 and later includes items 2 through 12)	2A3934G01				1				
2	Lock Tumbler		4A0462-01	1	1	1	1				
3	Lock Stop Washer		4A0458-01	1	1	1	1				
4	Door Lock Cam		4A0228-01	1	1	1	1				
5	Lock Screw		4A0461-01	1	1	1	1				
6	Door Gasket		3A0273-02	1	1	1	1				
7	Door Stop		4A0351-01	1	-						
7a	Truss Head Screw		7C32-0525	2	-						
8	Lock Washer		4A0459-01	1	1	1	1				
9	Lock Key		4A0460-01	1	1	1	1				
10	Door Lock Washer		4A0670-01	1	1	1	1				
11	Right Hinge Spring		4A3312-01	1	1	1	1				
12	Right Hinge Spring Cartridge		4A0438-01	1	1	1	1				

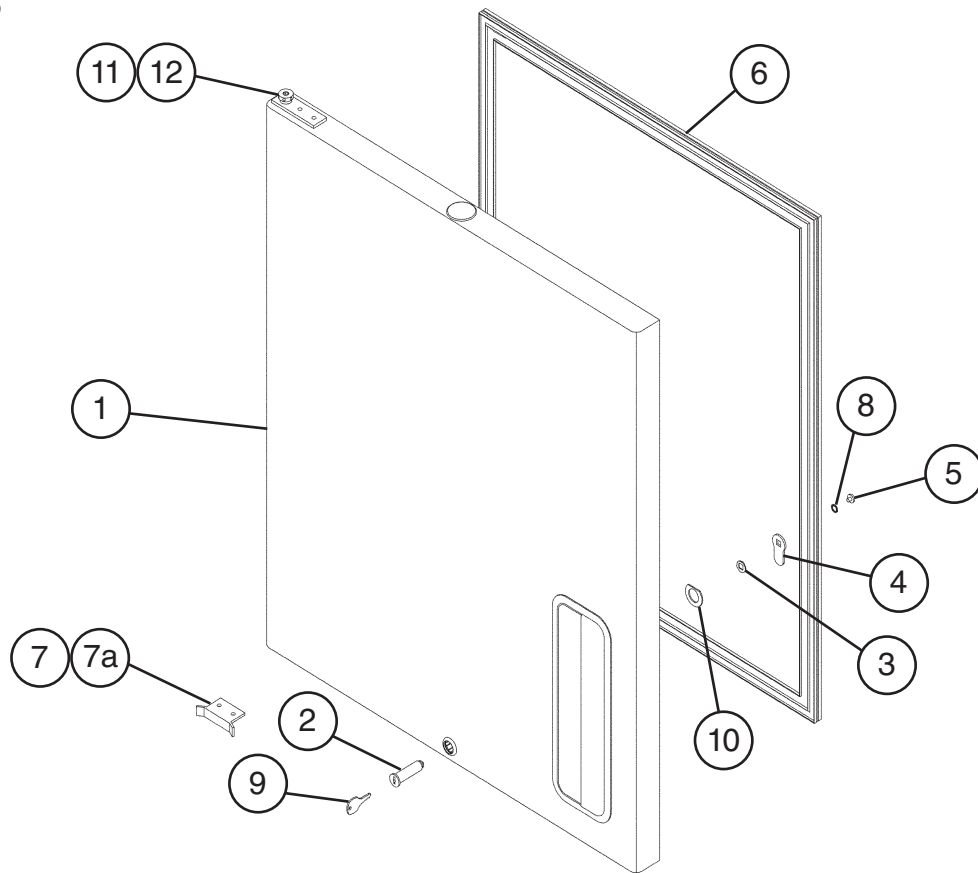


**J. Lower Right (LR) Half Door**  
**FH2-SSB-HD**  
 J-1 to C-5



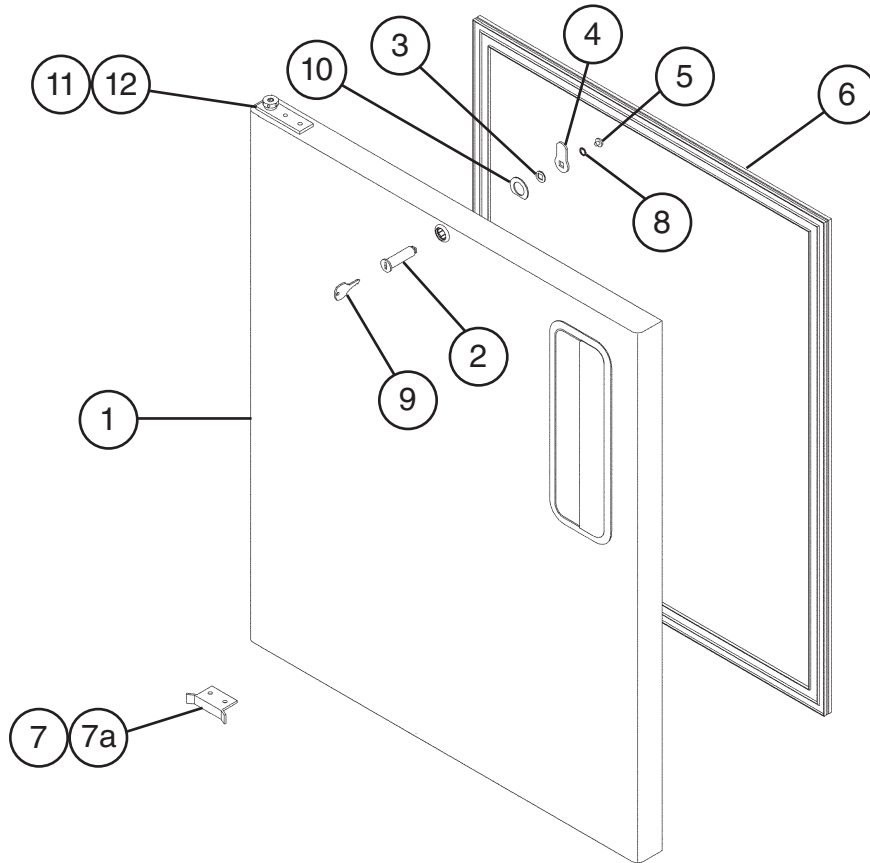
Title: J. Lower Right (LR) Half Door    Model: FH2-SSB-HD											
Index No.	Description	Material or Model Number	Part Number	Required Number							
				J-1	L-5 to M-7	N-6 to S-5	T-5 to C-5				
1	Lower Right (LR) Door ( <b>T-5 and Later</b> includes items 2 through 12)		1A0323G01	1	1	-					
			1A0323G03			1	-				
			2A3935G01				1				
2	Lock Tumbler		4A0462-01	1	1	1	1				
3	Lock Stop Washer		4A0458-01	1	1	1	1				
4	Door Lock Cam		4A0228-01	1	1	1	1				
5	Lock Screw		4A0461-01	1	1	1	1				
6	Door Gasket		3A0273-02	1	1	1	1				
7	Door Stop		4A0351-01	1	-						
			4A1873-01		1	1	1				
7a	Truss Head Screw		7C32-0525	2	-						
8	Lock Washer		4A0459-01	1	1	1	1				
9	Lock Key		4A0460-01	1	1	1	1				
10	Door Lock Washer		4A0670-01	1	1	1	1				
11	Left Hinge Spring		4A3312-01	1	1	1	1				
12	Left Hinge Spring Cartridge		4A0438-01	1	1	1	1				

**K. Upper Left (UL) Half Door**  
**FH2-SSB-HD**  
 J-1 to C-5



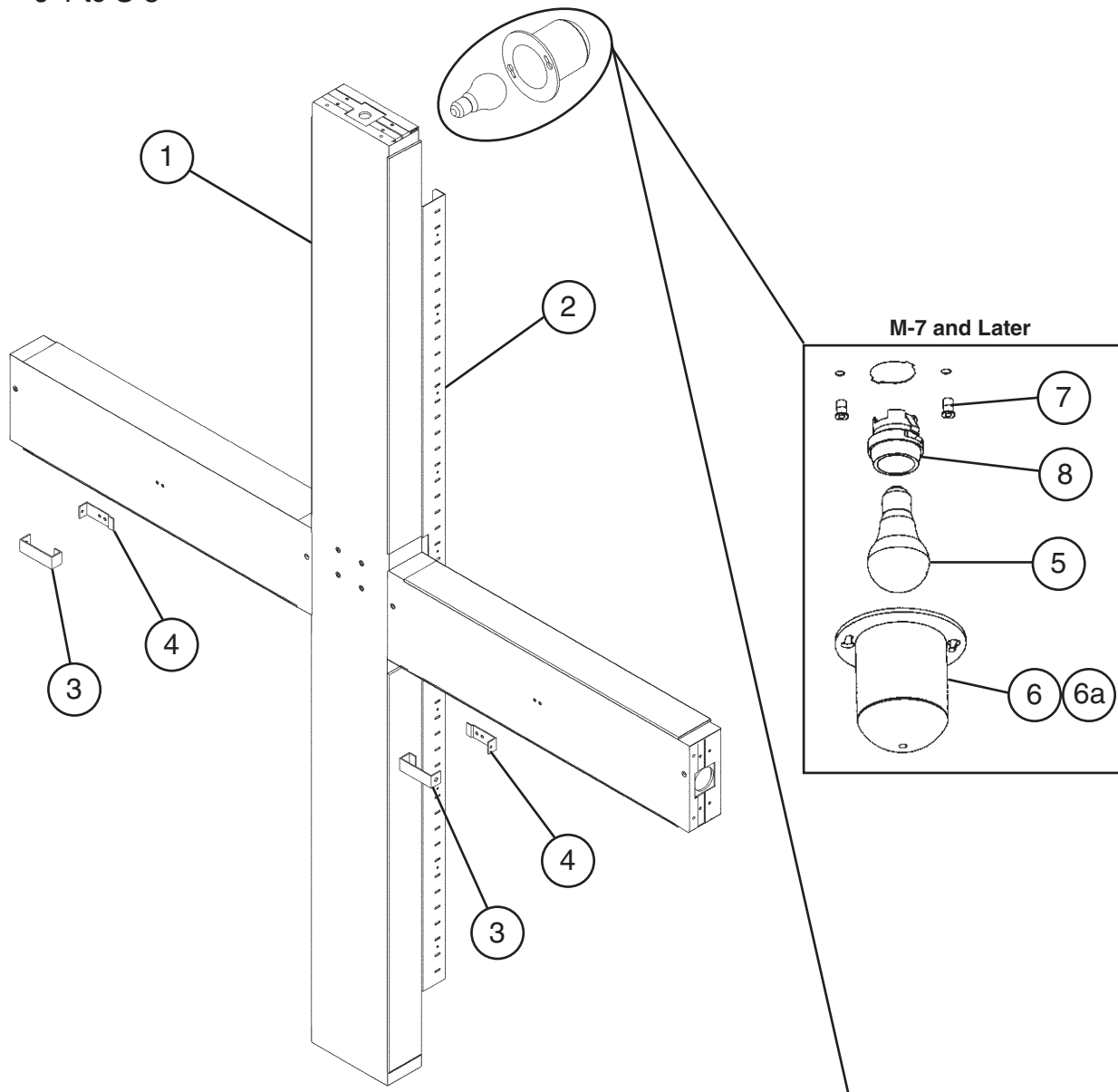
Title: K. Upper Left (UL) Half Door Model: FH2-SSB-HD										
Index No.	Description	Material or Model Number	Part Number	Required Number						
				J-1	L-5 to M-7	N-6 to S-5	T-5 to C-5			
1	Upper Left (UL) Door (T-5 and Later includes items 2 through 12)		1A0323G02	1	1	-				
			1A0323G04			1	-			
			2A3937G01				1			
2	Lock Tumbler		4A0462-01	1	1	1	1			
3	Lock Stop Washer		4A0458-01	1	1	1	1			
4	Door Lock Cam		4A0228-01	1	1	1	1			
5	Lock Screw		4A0461-01	1	1	1	1			
6	Door Gasket		3A0273-02	1	1	1	1			
7	Door Stop		4A0351-01	1	-					
			4A1873-01		1	1	1			
7a	Truss Head Screw		7C32-0525	2	-					
8	Lock Washer		4A0459-01	1	1	1	1			
9	Lock Key		4A0460-01	1	1	1	1			
10	Door Lock Washer		4A0670-01	1	1	1	1			
11	Left Hinge Spring		4A3312-02	1	1	1	1			
12	Left Hinge Spring Cartridge		4A0438-02	1	1	1	1			

**L. Lower Left (LL) Half Door**  
**FH2-SSB-HD**  
 J-1 to C-5



Title: L. Lower Left (LL) Half Door Model: FH2-SSB-HD											
Index No.	Description	Material or Model Number	Part Number	Required Number							
				J-1	L-5 to M-7	N-6 to S-5	T-5 to C-5				
1	Lower Left (LL) Door (T-5 and Later includes items 2 through 12)		1A0325G02	1	1	-					
			1A0325G04			1	-				
			2A3938G01					1			
2	Lock Tumbler		4A0462-01	1	1	1	1				
3	Lock Stop Washer		4A0458-01	1	1	1	1				
4	Door Lock Cam		4A0228-01	1	1	1	1				
5	Lock Screw		4A0461-01	1	1	1	1				
6	Door Gasket		3A0273-02	1	1	1	1				
7	Door Stop		4A0351-01	1	-						
			4A1873-01		1	1	1				
7a	Truss Head Screw		7C32-0525	2	-						
8	Lock-Washer		4A0459-01	1	1	1	1				
9	Lock Key		4A0460-01	1	1	1	1				
10	Door Lock Washer		4A0670-01	1	1	1	1				
11	Hinge Spring		4A3312-02	1	1	1	1				
12	Hinge Spring Cartridge		4A0438-02	1	1	1	1				

**M. Cross Mullion  
FH2-SSB-HD  
1/2  
J-1 to S-5**

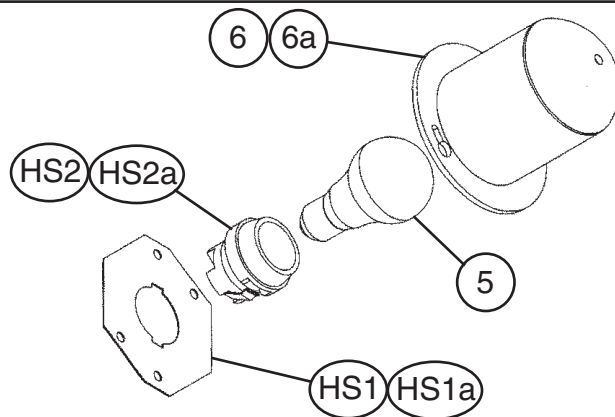


**M-6 and Earlier**

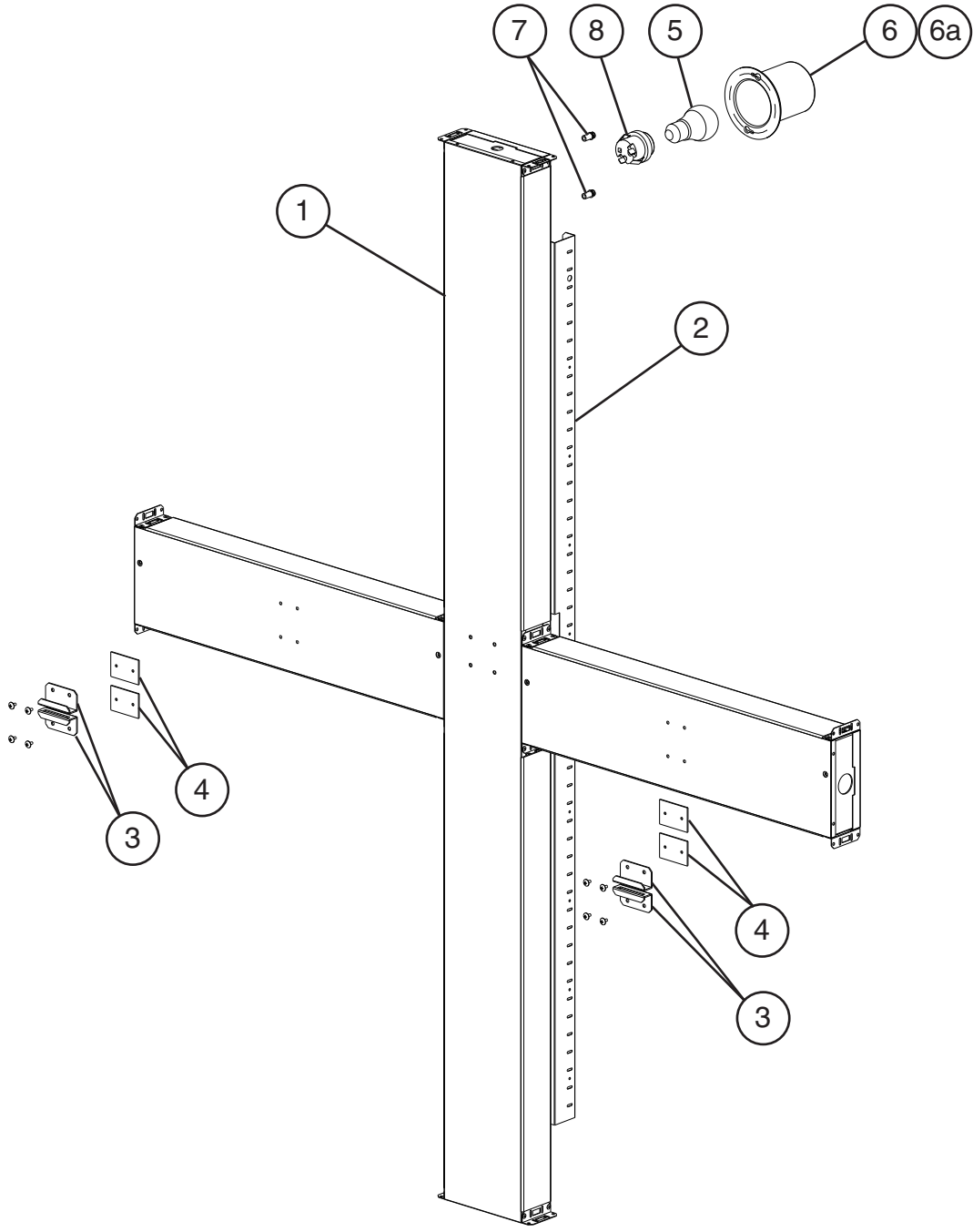
The santoprene light socket was changed to a porcelain lampholder at M-7. This change is non-interchangeable. If the light socket is not operating on a unit with a santoprene light socket, order **HS-3554 - Lampholder Conversion Kit**.

**Note:**

Parts 5, 6 and 6a are not included in HS-3554; they are shown for reference only.



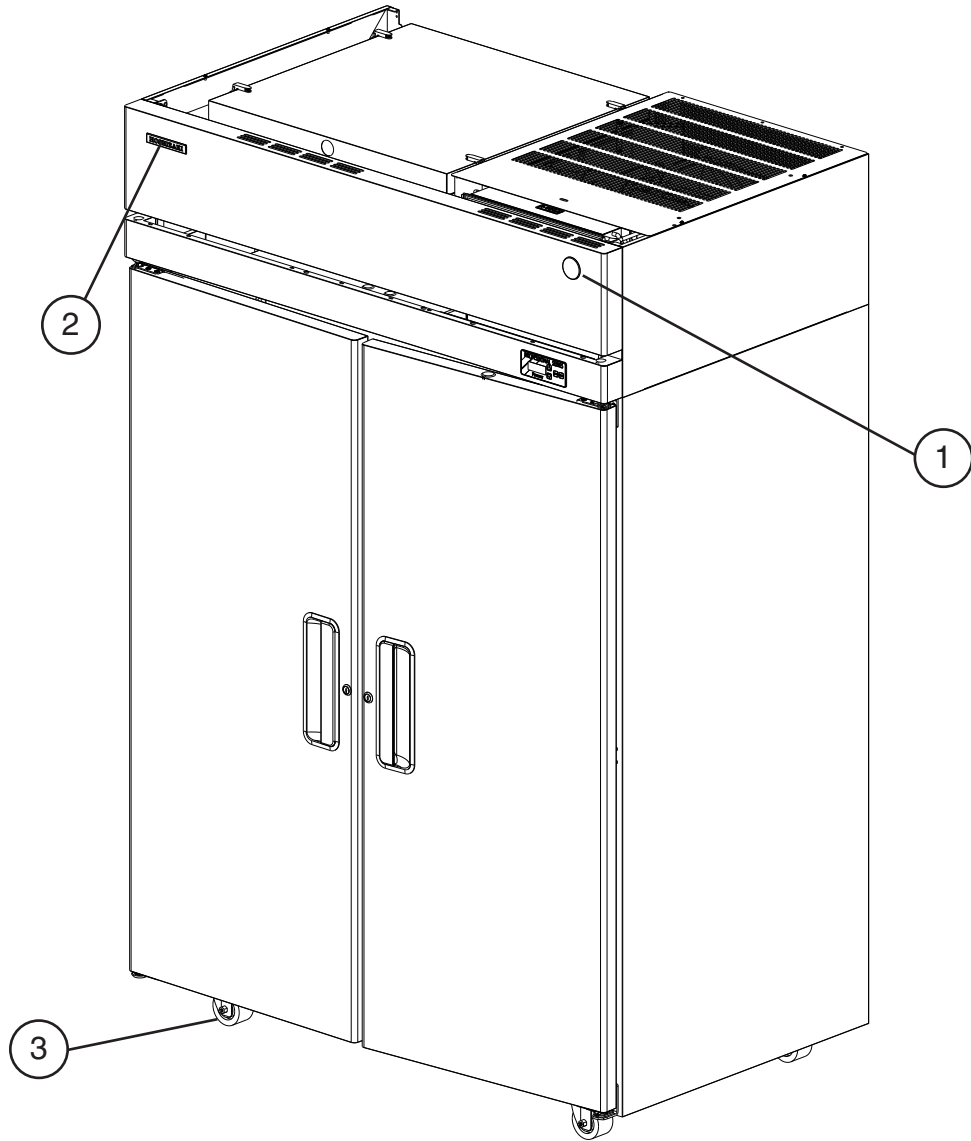
**M. Cross Mullion**  
**FH2-SSB-HD**  
**2/2**  
T-5 to C5



Title: M. Cross Mullion Model: FH2-SSB-HD												
Index No.	Description	Material or Model Number	Part Number	Required Number								
				J-1	L-5	M-6	M-7 to P-6	Q-5 to S-5	T-5 to C-5			
1	Mullion-Prefoam (T-5 and later includes items 2 through 8)		2A1351G01	1	-							
			2A1351G04		1	1	1	1	-			
			2A4767G01						1			
2	Mullion Pilaster		2A0205-02	2	2	2	2	-				
			2A3246-01					2	2			
3	Front StrikePlate		4A0355-01	2	2	2	2	2	-			
			4A4587-01							4		
4	Base Strike Plate		4A0354-01	2	2	2	2	2	-			
			4A0472-01							4		
5	Light Bulb		4A0437-01	1	1	-						
			4A2420-01			1	1	1	1			
6	Light Shield		4A0465-01	1	1	1	1	1	1			
6a	Truss Head Screw		7C32-0510	2	-							
	Cheese Head Screw		7C52-0512		2	2	2	2	2			
7	Threaded Wide Insert		4A0839-01	Non-interchangeable part change. If light socket is not operating for these codes, order conversion kit <a href="#">HS-3554</a> (below).			2	2	2			
8	Lampholder	4A2862-01	1				1	1				

HS-3554 - Lampholder Conversion Kit												
Index No.	Description	Material or Model Number	Part Number	Required Number								
				M-6 and earlier								
HS1	Lampholder Mount Plate	SS	4A2880-01	1								
HS1a	Cheese Head Screw	SS	7C52-0512	2								
HS2	Lampholder		4A2862-01	1								
HS2a	Flag Terminal		8101-18FJ	2								

**N. Accessories & Labels**  
**FH2-SSB(-HD)**  
H-0 to C-5



Title: N. Accessories & Labels    Model: FH2-SSB(-HD)													
Index No.	Description	Material or Model Number	Part Number	Required Number									
				H-0 to C-5									
1	Label-Penguin-HA(L)		456246-02	1									
2	Emblem-Hoshizaki		4A0560-01	1									
3	Caster		1A1347-01	2									
		Locking	1A1347-02	2									