

# Hoshizaki America, Inc.

## Stackable Crescent Cuber

### Models

KM-2500SVWH3

KM-2500SRH3



“A Superior Degree  
of Reliability”

[www.hoshizaki.com](http://www.hoshizaki.com)

## PARTS LIST



Number: 71281  
Issued: 9-3-2009  
Revised: 6-5-2013

## CONTENTS

|   |    |
|---|----|
| Auxiliary Codes.....                                | 3  |
| Note About Ordering Parts .....                     | 3  |
| A. Ice Cuber Assembly & Refrigeration Circuit ..... | 4  |
| KM-2500SWH3 .....                                   | 4  |
| KM-2500SRH3 .....                                   | 7  |
| B. Water Circuit .....                              | 10 |
| C. Control Box Assembly .....                       | 13 |
| D. Accessories & Labels .....                       | 14 |

## Auxiliary Codes

|                    |     |               |
|--------------------|-----|---------------|
| <b>KM-2500SWH3</b> | T-0 | May 2008      |
|                    | U-0 | January 2009  |
|                    | V-0 | January 2010  |
|                    | V-1 | July 2010     |
|                    | A-0 | February 2011 |
|                    | B-0 | January 2012  |
|                    | C-0 | January 2013  |
|                    | C-1 | March 2013    |

|                    |     |              |
|--------------------|-----|--------------|
| <b>KM-2500SRH3</b> | T-0 | May 2008     |
|                    | U-0 | August 2009  |
|                    | V-0 | January 2010 |
|                    | V-1 | July 2010    |
|                    | A-0 | January 2011 |
|                    | B-0 | January 2012 |
|                    | C-0 | January 2013 |

## Auxiliary Code Breakdown

The auxiliary code is the first two characters in the serial number. The first character indicates the year. Years progress or regress in alphabetical order. The series runs from "A" through "V" and the letters "I" and "O" are skipped. The second character indicates significant part changes within a year. Base is "0" and this number advances for each change. In cases where there is a letter in parentheses, this designates the month. This is the last character in the serial number. The series runs from "(A)" through "(M)" and the letter "(I)" is skipped. This designation is only included when identifying a parts change within an auxiliary code.

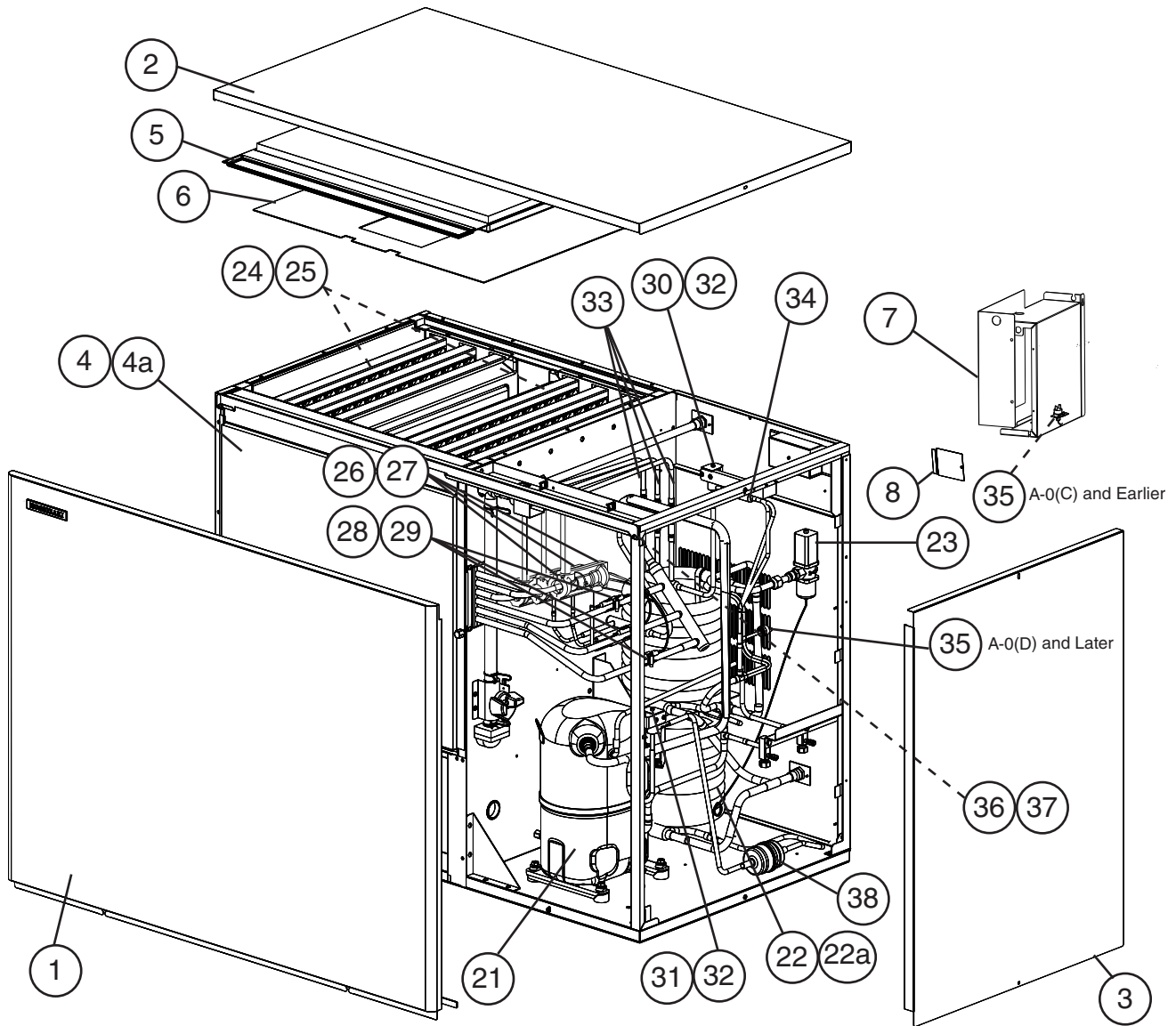
## Note About Ordering Parts

Most assemblies cannot be ordered as complete units; parts in the assemblies generally must be ordered separately.

# A. Ice Cuber Assembly & Refrigeration Circuit

## KM-2500SWH3

T-0 to C-1



Item 11 is for use with Hoshizaki bins B-1300, B-1500, B-1650, and non-Hoshizaki bins.

**Title: A. Ice Cuber Assembly & Refrigeration Circuit Model: KM-2500SWH3**

| Index No.                    | Description                                   | Material or Model Number | Part Number | Required Number |                |                    |                |                |  |  |  |  |  |
|------------------------------|---|--------------------------|-------------|-----------------|----------------|--------------------|----------------|----------------|--|--|--|--|--|
|                              |   |                          |             | T-0 to V-0      | V-1 to A-0 (C) | A-0 (D) to A-0 (M) | B-0 to C-0 (A) | C-0 (B) to C-1 |  |  |  |  |  |
| <b>Ice Cuber Assembly</b>    |   |                          |             |                 |                |                    |                |                |  |  |  |  |  |
| 1                            | Front Panel                                   |                          | 3A1838G01   | 1               | 1              | 1                  | 1              | 1              |  |  |  |  |  |
| 2                            | Top Panel                                     |                          | 2A2255-01   | 1               | 1              | 1                  | 1              | 1              |  |  |  |  |  |
| 3                            | Right Side Panel                              |                          | 215381G02   | 1               | 1              | 1                  | 1              | 1              |  |  |  |  |  |
| 4                            | Front Insulation                              |                          | 326041G01   | 1               | 1              | 1                  | 1              | 1              |  |  |  |  |  |
| 4a                           | Thumbscrew                                    |                          | 415949G12   | 1               | 1              | 1                  | 1              | 1              |  |  |  |  |  |
| 5                            | Top Insulation                                |                          | 324216G01   | 1               | 1              | 1                  | 1              | 1              |  |  |  |  |  |
| 6                            | Spacer  |                          | 324321-01   | 1               | 1              | 1                  | 1              | 1              |  |  |  |  |  |
| 7                            | Control Box Cover                             |                          | 3A2386-01   | 1               | 1              | 1                  | 1              | 1              |  |  |  |  |  |
| 8                            | Junction Box Cover                            |                          | 433410-01   | 1               | 1              | 1                  | 1              | 1              |  |  |  |  |  |
| 9                            | Bin Control Bulb Holder                       |                          | 3A3903-01   | 1               | 1              | 1                  | 1              | 1              |  |  |  |  |  |
| 10                           | Bin Control Bulb Holder C                     | ABS                      | 216340G01   | 1               | 1              | 1                  | 1              | 1              |  |  |  |  |  |
| 11                           | Bin Control Bulb Holder C                     | Z Bracket                | 325845G01   | 1               | 1              | 1                  | 1              | 1              |  |  |  |  |  |
| 12                           | Bin Control Bulb Holder E                     |                          | 439725-01   | 1               | 1              | 1                  | 1              | 1              |  |  |  |  |  |
| 13                           | Bin Control Bulb Holder F                     |                          | 328743-01   | 1               | 1              | 1                  | 1              | 1              |  |  |  |  |  |
| 13a                          | Thumbscrew                                    |                          | 415949G12   | 2               | 2              | 2                  | 2              | 2              |  |  |  |  |  |
| 14                           | Bin Control Bulb Holder G                     |                          | 439726-01   | 1               | 1              | 1                  | 1              | 1              |  |  |  |  |  |
| 15                           | Spacer  |                          | 439727-01   | 1               | 1              | 1                  | 1              | 1              |  |  |  |  |  |
| 16                           | Capillary Ring                                |                          | 425307-01   | 1               | 1              | 1                  | 1              | 1              |  |  |  |  |  |
| 17                           | Silicone Hose                                 | L=285                    | 7730I3812   | 1               | 1              | 1                  | 1              | 1              |  |  |  |  |  |
| 18                           | Bin Control Extension Bracket                 |                          | 3A0408-01   | 1               | 1              | 1                  | 1              | 1              |  |  |  |  |  |
| 19                           | Main Transformer                              |                          | 4A0817-01   | 1               | 1              | 1                  | 1              | 1              |  |  |  |  |  |
| 20                           | Voltage Tap Switch                            |                          | 4A1477-01   | 1               | 1              | 1                  | 1              | 1              |  |  |  |  |  |
| <b>Refrigeration Circuit</b> |   |                          |             |                 |                |                    |                |                |  |  |  |  |  |
| 21                           | Compressor                                    |                          | 4A4486-01   | 1               | -              |                    |                |                |  |  |  |  |  |
|                              |   |                          | 4A5093-01   |                 | 1              | 1                  | -              |                |  |  |  |  |  |
|                              |   |                          | 4A5093-03   |                 |                |                    | 1              | 1              |  |  |  |  |  |
| 22                           | Condenser                                     | HS-0163                  | 2A2359G04   | 2               | 2              | 2                  | 2              | -              |  |  |  |  |  |
|                              |   |                          | 3A7236-01   |                 |                |                    |                | 2              |  |  |  |  |  |
| 22a                          | Hex Head Bolt w/Washer                        | 5x12                     | 7B0130512   | 4               | 4              | 4                  | 4              | 6              |  |  |  |  |  |
| 23                           | Water Regulating Valve                        |                          | 4A0911-07   | 1               | 1              | 1                  | 1              | 1              |  |  |  |  |  |
| 24                           | Evaporator Bank (each bank includes 3 plates) | HS-008                   | 2A0416G01   | 2               | 2              | 2                  | 2              | 2              |  |  |  |  |  |
| 25                           | Separator Hook                                |                          | 324152-01   | 8               | 8              | 8                  | 8              | 8              |  |  |  |  |  |
| 26                           | Thermostatic Expansion Valve                  |                          | 4A1482-01   | 3               | 3              | 3                  | 3              | 3              |  |  |  |  |  |
| 27                           | Thermostatic Expansion Valve Cover            |                          | 3A0944-01   | 3               | 3              | 3                  | 3              | 3              |  |  |  |  |  |
| 28                           | Thermostatic Expansion Valve Bulb Holder      |                          | 3A0107-01   | 3               | 3              | 3                  | 3              | 3              |  |  |  |  |  |
| 29                           | Clamp   |                          | 443461-02   | 3               | 3              | 3                  | 3              | 3              |  |  |  |  |  |
| 30                           | Hot Gas Valve Body                            |                          | 4A3978-01   | 1               | 1              | 1                  | 1              | 1              |  |  |  |  |  |
| 31                           | Liquid Line Valve Body                        |                          | 4A3276-01   | 1               | 1              | 1                  | 1              | 1              |  |  |  |  |  |
| 32                           | Valve Coil                                    |                          | 4A3277-01   | 2               | 2              | 2                  | 2              | 2              |  |  |  |  |  |
| 33                           | Check Valve                                   |                          | 4A2054-01   | 3               | 3              | 3                  | 3              | 3              |  |  |  |  |  |

**Title: A. Ice Cuber Assembly & Refrigeration Circuit Model: KM-2500SWH3**

| Index No. | Description          | Material or Model Number | Part Number               | Required Number |                |                    |                |                |  |  |  |  |
|-----------|----------------------|--------------------------|---------------------------|-----------------|----------------|--------------------|----------------|----------------|--|--|--|--|
|           |                      |                          |                           | T-0 to V-0      | V-1 to A-0 (C) | A-0 (D) to A-0 (M) | B-0 to C-0 (A) | C-0 (B) to C-1 |  |  |  |  |
| 34        | Strainer             |                          | <a href="#">441569-02</a> | 1               | 1              | 1                  | 1              | 1              |  |  |  |  |
| 35        | High-Pressure Switch |                          | <a href="#">433441-05</a> | 1               | 1              | -                  |                |                |  |  |  |  |
|           |                      |                          | <a href="#">463180-05</a> |                 |                | 1                  | 1              | 1              |  |  |  |  |
| 36        | Thermistor           |                          | <a href="#">429006-03</a> | 1               | 1              | 1                  | 1              | 1              |  |  |  |  |
| 37        | Thermistor Holder    |                          | <a href="#">438247-01</a> | 1               | 1              | 1                  | 1              | 1              |  |  |  |  |
| 38        | Drier                |                          | <a href="#">4A2663-01</a> | 1               | 1              | 1                  | 1              | 1              |  |  |  |  |



| Title: <b>A. Ice Cuber Assembly &amp; Refrigeration Circuit</b> Model: <b>KM-2500SRH3</b> |   |                          |             |                 |                |  |  |  |  |  |
|---|---|--------------------------|-------------|-----------------|----------------|--|--|--|--|--|
| Index No.   | Description                                   | Material or Model Number | Part Number | Required Number |                |  |  |  |  |  |
|   |   |                          |             | T-0 to A-0 (C)  | A-0 (D) to C-0 |  |  |  |  |  |
| <b>Ice Cuber Assembly</b>   |   |                          |             |                 |                |  |  |  |  |  |
| 1   | Front Panel                                   |                          | 3A1838G01   | 1               | 1              |  |  |  |  |  |
| 2   | Top Panel                                     |                          | 2A2255-01   | 1               | 1              |  |  |  |  |  |
| 3   | Right Side Panel                              |                          | 215381G02   | 1               | 1              |  |  |  |  |  |
| 4   | Front Insulation                              |                          | 326041G01   | 1               | 1              |  |  |  |  |  |
| 4a  | Thumbscrew                                    |                          | 415949G12   | 1               | 1              |  |  |  |  |  |
| 5   | Top Insulation                                |                          | 324216G01   | 1               | 1              |  |  |  |  |  |
| 6   | Spacer  |                          | 324321-01   | 1               | 1              |  |  |  |  |  |
| 7   | Control Box Cover                             |                          | 3A2386-01   | 1               | 1              |  |  |  |  |  |
| 8   | Junction Box Cover                            |                          | 433410-01   | 2               | 2              |  |  |  |  |  |
| 9   | Bin Control Bulb Holder                       |                          | 3A3903-01   | 1               | 1              |  |  |  |  |  |
| 10  | Bin Control Bulb Holder C                     | ABS                      | 216340G01   | 1               | 1              |  |  |  |  |  |
| 11  | Bin Control Bulb Holder C                     | Z Bracket                | 325845G01   | 1               | 1              |  |  |  |  |  |
| 12  | Bin Control Bulb Holder E                     |                          | 439725-01   | 1               | 1              |  |  |  |  |  |
| 13  | Bin Control Bulb Holder F                     |                          | 328743-01   | 1               | 1              |  |  |  |  |  |
| 13a   | Thumbscrew                                    |                          | 415949G12   | 2               | 2              |  |  |  |  |  |
| 14  | Bin Control Bulb Holder G                     |                          | 439726-01   | 1               | 1              |  |  |  |  |  |
| 15  | Spacer  |                          | 439727-01   | 1               | 1              |  |  |  |  |  |
| 16  | Capillary Ring                                |                          | 425307-01   | 1               | 1              |  |  |  |  |  |
| 17  | Silicone Hose                                 | L=285                    | 773013812   | 1               | 1              |  |  |  |  |  |
| 18  | Bin Control Extension Bracket                 |                          | 3A0408-01   | 1               | 1              |  |  |  |  |  |
| 19  | Main Transformer                              |                          | 4A0817-01   | 1               | 1              |  |  |  |  |  |
| 20  | Voltage Tap Switch                            |                          | 4A1477-01   | 1               | 1              |  |  |  |  |  |
| <b>Refrigeration Circuit</b>  |   |                          |             |                 |                |  |  |  |  |  |
| 21  | Compressor                                    |                          | 4A4782-01   | 1               | 1              |  |  |  |  |  |
| 22  | Crankcase Heater                              |                          | 4A2090-01   | 1               | 1              |  |  |  |  |  |
| 23  | Receiver                                      |                          | 440366-01   | 1               | 1              |  |  |  |  |  |
| 23a   | Hex Head Bolt w/Washer (LF)                   | 5x10                     | 7B0130510   | 1               | 1              |  |  |  |  |  |
| 24  | Evaporator Bank (each bank includes 3 plates) | HS-008                   | 2A0416G01   | 2               | 2              |  |  |  |  |  |
| 25  | Separator Hook                                |                          | 324152-01   | 8               | 8              |  |  |  |  |  |
| 26  | Thermostatic Expansion Valve                  |                          | 4A1482-01   | 3               | 3              |  |  |  |  |  |
| 27  | Thermostatic Expansion Valve Cover            |                          | 3A0944-01   | 3               | 3              |  |  |  |  |  |
| 28  | Thermostatic Expansion Valve Bulb Holder      |                          | 3A0107-01   | 3               | 3              |  |  |  |  |  |
| 29  | Clamp   |                          | 443461-02   | 3               | 3              |  |  |  |  |  |
| 30  | Hot Gas Valve Body                            |                          | 4A3978-01   | 1               | 1              |  |  |  |  |  |
| 31  | Liquid Line Valve Body                        |                          | 4A3276-01   | 1               | 1              |  |  |  |  |  |
| 32  | Valve Coil                                    |                          | 4A3277-01   | 2               | 2              |  |  |  |  |  |
| 33  | Check Valve                                   |                          | 4A2054-01   | 3               | 3              |  |  |  |  |  |
| 34  | Strainer                                      |                          | 441569-02   | 1               | 1              |  |  |  |  |  |
| 35  | High-Pressure Switch                          |                          | 433441-07   | 1               | -              |  |  |  |  |  |
|   |   |                          | 463180-04   |                 | 1              |  |  |  |  |  |
| 36  | Thermistor                                    |                          | 429006-03   | 1               | 1              |  |  |  |  |  |
| 37  | Thermistor Holder                             |                          | 438247-01   | 1               | 1              |  |  |  |  |  |

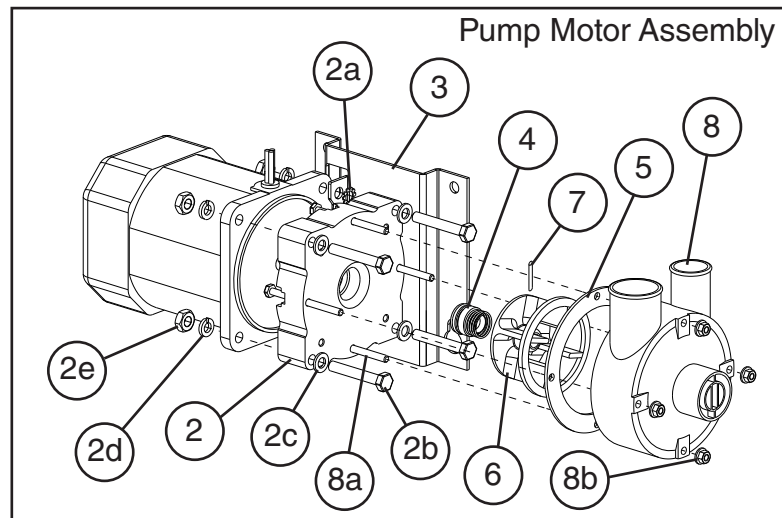
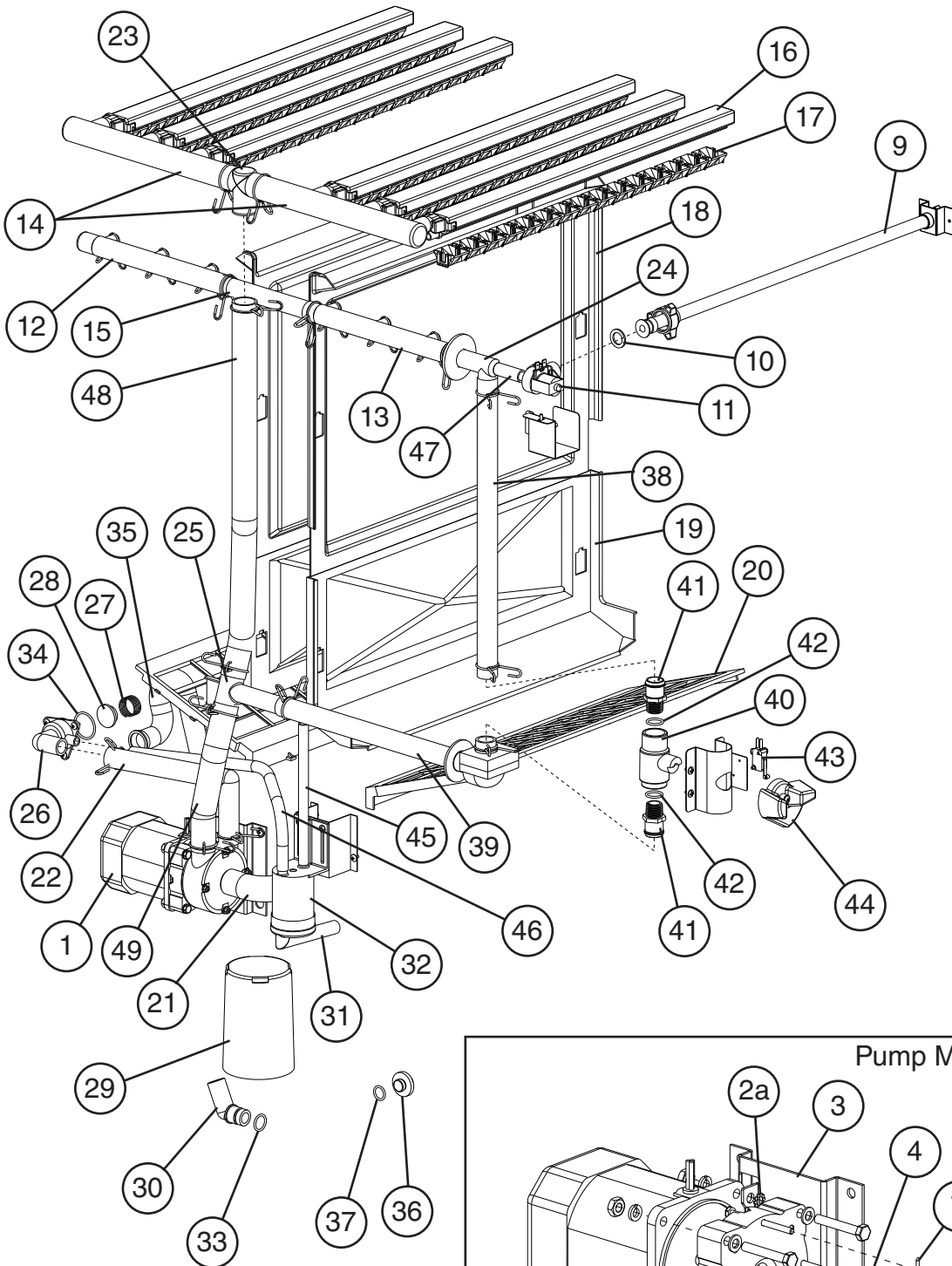


| Title: <b>A. Ice Cuber Assembly &amp; Refrigeration Circuit</b> Model: <b>KM-2500SRH3</b> |   |                          |                           |                 |                |  |  |  |  |  |
|---|---|--------------------------|---------------------------|-----------------|----------------|--|--|--|--|--|
| Index No.   | Description                               | Material or Model Number | Part Number               | Required Number |                |  |  |  |  |  |
|   |   |                          |                           | T-0 to A-0 (C)  | A-0 (D) to C-0 |  |  |  |  |  |
| 38  | Drier                                     |                          | <a href="#">4A2663-01</a> | 1               | 1              |  |  |  |  |  |
| 39  | Headmaster (Condenser Pressure Regulator) |                          | <a href="#">4A0229-01</a> | 1               | 1              |  |  |  |  |  |
| 40  | Liquid Line Coupling                      |                          | <a href="#">433751G01</a> | 1               | 1              |  |  |  |  |  |
| 41  | Discharge Line Coupling                   |                          | <a href="#">434136G03</a> | 1               | 1              |  |  |  |  |  |

## B. Water Circuit

### KM-2500SWH3, KM-2500SRH3

T-0 to C-1

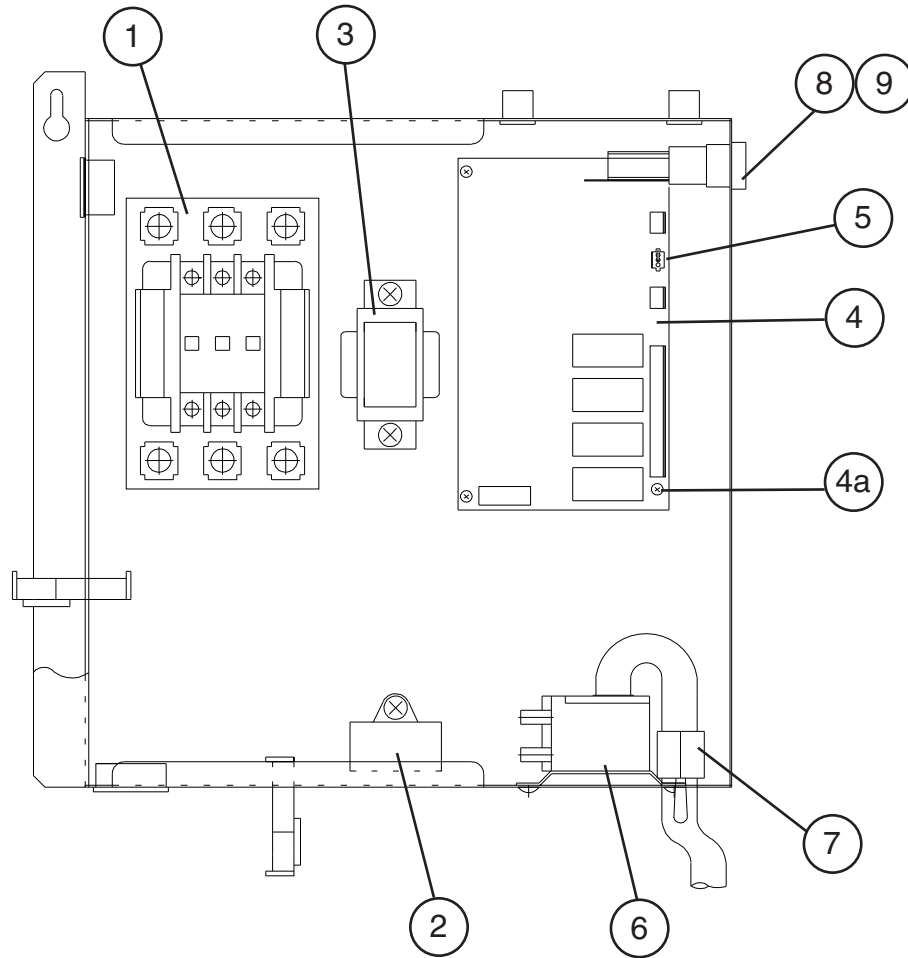


Title: **B. Water Circuit** Model: **KM-2500SWH3, KM-2500SRH3**

| Index No. | Description                                       | Material or Model Number | Part Number | Required Number |                    |                |  |  |  |  |  |  |  |  |
|-----------|---|--------------------------|-------------|-----------------|--------------------|----------------|--|--|--|--|--|--|--|--|
|           |   |                          |             | T-0 to V-1 (L)  | V-1 (M) to A-0 (L) | A-0 (M) to C-1 |  |  |  |  |  |  |  |  |
| 1         | Pump Motor Assembly (includes items 2 through 8b) | S-0730                   | 215692A03   | 1               | 1                  | 1              |  |  |  |  |  |  |  |  |
| 2         | Pump Flange                                       |                          | 215662-01   | 1               | 1                  | 1              |  |  |  |  |  |  |  |  |
| 2a        | Tooth Washer                                      | M6, SS                   | 7R22-0600   | 2               | 2                  | 2              |  |  |  |  |  |  |  |  |
| 2b        | Hex Head Bolt                                     | 6x40, SS                 | 7B02-0640   | 4               | 4                  | 4              |  |  |  |  |  |  |  |  |
| 2c        | Flat Washer                                       | M6, SS                   | 7W22-0600   | 4               | 4                  | 4              |  |  |  |  |  |  |  |  |
| 2d        | Split Lock Washer                                 | M6, SS                   | 7L22-0600   | 4               | 4                  | 4              |  |  |  |  |  |  |  |  |
| 2e        | Hex Nut   |                          | 7N12-0600   | 4               | 4                  | 4              |  |  |  |  |  |  |  |  |
| 3         | Pump Motor Bracket                                |                          | 323904-01   | 1               | 1                  | 1              |  |  |  |  |  |  |  |  |
| 4         | Mechanical Seal                                   |                          | 4A3820-01   | 1               | 1                  | 1              |  |  |  |  |  |  |  |  |
| 5         | Packing   |                          | 428547-01   | 1               | 1                  | 1              |  |  |  |  |  |  |  |  |
| 6         | Impeller  |                          | 436584-01   | 1               | 1                  | 1              |  |  |  |  |  |  |  |  |
| 7         | Pin   |                          | 4A0648-01   | 1               | 1                  | 1              |  |  |  |  |  |  |  |  |
| 8         | Pump Housing                                      |                          | 213687-01   | 1               | 1                  | 1              |  |  |  |  |  |  |  |  |
| 8a        | Hex Head Bolt                                     | 4x55, SS                 | 7B02-0455   | 4               | 4                  | 4              |  |  |  |  |  |  |  |  |
| 8b        | Hex Flange Nut                                    | 4, SS                    | 7J02-0400   | 4               | 4                  | 4              |  |  |  |  |  |  |  |  |
| 9         | Water Supply Pipe                                 |                          | 4A5216G04   | 1               | 1                  | 1              |  |  |  |  |  |  |  |  |
| 10        | Rubber Gasket                                     |                          | 413854-03   | 1               | 1                  | 1              |  |  |  |  |  |  |  |  |
| 11        | Inlet Water Valve                                 |                          | 4A1176-04   | 1               | -                  |                |  |  |  |  |  |  |  |  |
|           |   |                          | 4A5251-04   |                 | 1                  | 1              |  |  |  |  |  |  |  |  |
| 12        | Distributor Hose A                                |                          | 325738-01   | 1               | 1                  | 1              |  |  |  |  |  |  |  |  |
| 13        | Distributor Hose B                                |                          | 325738-02   | 1               | 1                  | 1              |  |  |  |  |  |  |  |  |
| 14        | Distributor Hose C                                |                          | 325739-01   | 2               | 2                  | 2              |  |  |  |  |  |  |  |  |
| 15        | Joint Pipe  |                          | 439297-01   | 1               | 1                  | 1              |  |  |  |  |  |  |  |  |
| 16        | Spray Tube  |                          | 437049G01   | 6               | 6                  | 6              |  |  |  |  |  |  |  |  |
| 17        | Spray Guide                                       |                          | 208586-01   | 18              | 18                 | 18             |  |  |  |  |  |  |  |  |
| 18        | Separator A                                       |                          | 215046-01   | 2               | 2                  | 2              |  |  |  |  |  |  |  |  |
| 19        | Separator B                                       |                          | 2A0100-01   | 2               | 2                  | 2              |  |  |  |  |  |  |  |  |
| 20        | Cube Guide  |                          | 214243-01   | 2               | 2                  | 2              |  |  |  |  |  |  |  |  |
| 21        | Hose A  |                          | 435091-01   | 1               | 1                  | 1              |  |  |  |  |  |  |  |  |
| 22        | Hose B  |                          | 325867-01   | 1               | 1                  | 1              |  |  |  |  |  |  |  |  |
| 23        | Distributor A                                     |                          | 439266-01   | 1               | 1                  | 1              |  |  |  |  |  |  |  |  |
| 24        | Distributor B                                     |                          | 439239-01   | 1               | 1                  | 1              |  |  |  |  |  |  |  |  |
| 25        | Distributor C                                     |                          | 439238-01   | 1               | 1                  | 1              |  |  |  |  |  |  |  |  |
| 26        | Drain Valve Housing                               |                          | 323613-01   | 1               | 1                  | 1              |  |  |  |  |  |  |  |  |
| 27        | Drain Valve Spring                                |                          | 322110-01   | 1               | 1                  | 1              |  |  |  |  |  |  |  |  |
| 28        | Drain Valve Seat                                  |                          | 433705-01   | 1               | 1                  | 1              |  |  |  |  |  |  |  |  |
| 29        | Overflow Cap                                      |                          | 325866-01   | 1               | 1                  | 1              |  |  |  |  |  |  |  |  |
| 30        | Overflow Joint                                    |                          | 323923-02   | 1               | 1                  | -              |  |  |  |  |  |  |  |  |
| 31        | Float Switch Connector                            |                          | 426799-04   | 1               | 1                  | 1              |  |  |  |  |  |  |  |  |
| 32        | Float Switch                                      |                          | 4A3624-01   | 1               | 1                  | 1              |  |  |  |  |  |  |  |  |
| 33        | Overflow Joint "O" Ring                           |                          | 7611-P018   | 1               | 1                  | -              |  |  |  |  |  |  |  |  |
| 34        | Drain Valve "O" Ring                              |                          | 7611-G035   | 1               | 1                  | 1              |  |  |  |  |  |  |  |  |
| 35        | Drain Hose  |                          | 325869-01   | 1               | 1                  | 1              |  |  |  |  |  |  |  |  |
| 36        | Drain Plug  |                          | 309246-01   | 1               | 1                  | 1              |  |  |  |  |  |  |  |  |

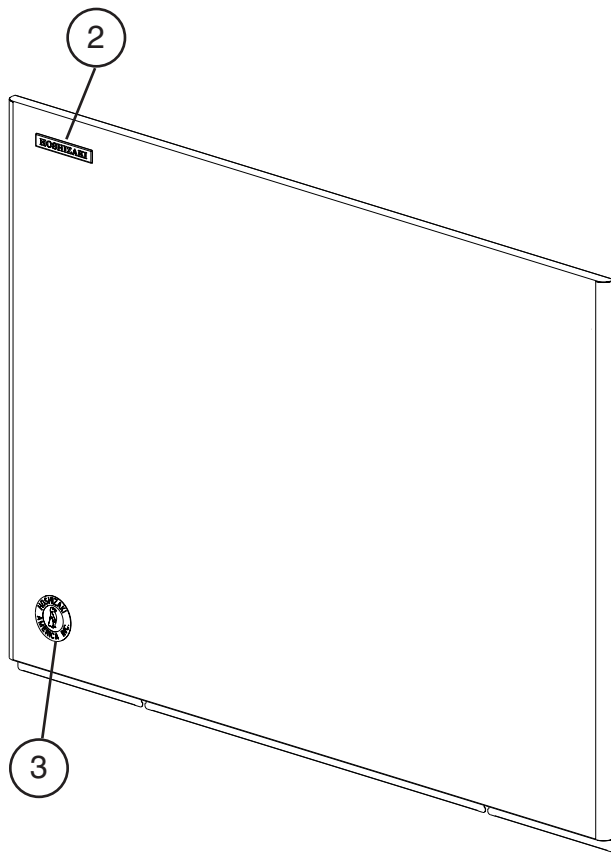
| Title: <b>B. Water Circuit</b> Model: <b>KM-2500SWH3, KM-2500SRH3</b> |                             |                          |                           |                 |                                   |                |  |  |  |  |  |  |
|---|-----------------------------|--------------------------|---------------------------|-----------------|-----------------------------------|----------------|--|--|--|--|--|--|
| Index No.   | Description                 | Material or Model Number | Part Number               | Required Number |                                   |                |  |  |  |  |  |  |
|   |                             |                          |                           | T-0 to V-1 (L)  | V-1 (M) to A-0 (L)                | A-0 (M) to C-1 |  |  |  |  |  |  |
| 37  | Drain Plug "O" Ring         |                          | <a href="#">7611-P015</a> | 1               | 1                                 | 1              |  |  |  |  |  |  |
| 38  | Joint Hose                  |                          | <a href="#">439309-01</a> | 1               | 1                                 | 1              |  |  |  |  |  |  |
| 39  | Bypass Hose                 |                          | <a href="#">439237-02</a> | 1               | 1                                 | 1              |  |  |  |  |  |  |
| 40  | Cleaning Valve Ball Valve   |                          | <a href="#">439293-01</a> | 1               | 1                                 | 1              |  |  |  |  |  |  |
| 41  | Cleaning Valve Male Adaptor |                          | <a href="#">325826-01</a> | 2               | 2                                 | 2              |  |  |  |  |  |  |
| 42  | Cleaning Valve "O" Ring     |                          | <a href="#">7611-P018</a> | 2               | Replaced with Thread Sealant Tape |                |  |  |  |  |  |  |
| 43  | Cleaning Valve Microswitch  |                          | <a href="#">4A2546-01</a> | 1               | 1                                 | 1              |  |  |  |  |  |  |
| 44  | Cleaning Valve Handle       |                          | <a href="#">215383-01</a> | 1               | 1                                 | 1              |  |  |  |  |  |  |
| 45  | Silicone Hose               | L=190                    | <a href="#">7730I3812</a> | 1               | 1                                 | 1              |  |  |  |  |  |  |
| 46  | Silicone Hose               | L=430                    | <a href="#">7730I3896</a> | 1               | 1                                 | 1              |  |  |  |  |  |  |
| 47  | Vinyl Hose                  | L=40                     | <a href="#">7716-1216</a> | 1               | 1                                 | 1              |  |  |  |  |  |  |
| 48  | Vinyl Hose                  | L=550                    | <a href="#">7716-2732</a> | 1               | 1                                 | 1              |  |  |  |  |  |  |
| 49  | Vinyl Hose                  | L=230                    | <a href="#">7716-2732</a> | 1               | 1                                 | 1              |  |  |  |  |  |  |
| <b>Hose Clamps</b>  |                             |                          |                           |                 |                                   |                |  |  |  |  |  |  |
|   | Hose Clamp                  | 25mm, SS                 | <a href="#">427443-03</a> | 9               | 9                                 | 9              |  |  |  |  |  |  |
|   | Hose Clamp                  | 13.5mm, SS               | <a href="#">427443-07</a> | 6               | 6                                 | 6              |  |  |  |  |  |  |
|   | Hose Clamp                  | 32mm, SS                 | <a href="#">427443-09</a> | 6               | 6                                 | 6              |  |  |  |  |  |  |

**C. Control Box Assembly**  
**KM-2500SWH3, KM-2500SRH3**  
 T-0 to C-1



| Title: C. Control Box Assembly |                        | Model: KM-2500SWH3, KM-2500SRH3 |             | Required Number |         |  |  |  |  |  |  |
|--------------------------------|------------------------|---------------------------------|-------------|-----------------|---------|--|--|--|--|--|--|
| Index No.                      | Description            | Material or Model Number        | Part Number | T-0 to B-0      | C-0 C-1 |  |  |  |  |  |  |
| 1                              | Magnetic Contactor     | KM-2500SWH3                     | 4A0794-02   | 1               | 1       |  |  |  |  |  |  |
|                                |                        | KM-2500SRH3                     | 4A0794-01   | 1               | 1       |  |  |  |  |  |  |
| 2                              | Pump Motor Capacitor   | 15 MFD, 240VAC                  | 439705-01   | 1               | 1       |  |  |  |  |  |  |
| 3                              | Control Transformer    |                                 | 3A0172-01   | 1               | 1       |  |  |  |  |  |  |
| 4                              | "E" Control Board      |                                 | 2A1410-01   | 1               | -       |  |  |  |  |  |  |
|                                | "G" Control Board      |                                 | 2A3792-01   |                 | 1       |  |  |  |  |  |  |
| 4a                             | Control Board Support  |                                 | 4A0336-03   | 4               | 4       |  |  |  |  |  |  |
| 5                              | K4 Jumper              |                                 | 4A4883G01   |                 | 1       |  |  |  |  |  |  |
| 6                              | Bin Control Thermostat |                                 | 4A2879-02   | 1               | 1       |  |  |  |  |  |  |
| 7                              | Control Switch         |                                 | 443119-01   | 1               | 1       |  |  |  |  |  |  |
| 8                              | Fuse Holder            |                                 | 4A5443-01   | 1               | 1       |  |  |  |  |  |  |
| 9                              | Fuse                   | 10A, 250V                       | 4A0893-07   | 1               | 1       |  |  |  |  |  |  |

**D. Accessories & Labels**  
**KM-2500SWH3, KM-2500SRH3**  
 T-0 to C-1



| Title: <b>D. Accessories &amp; Labels</b> Model: <b>KM-2500SWH3, KM-2500SRH3</b> |                        |                          |                           |            |                 |  |  |  |  |  |
|--|------------------------|--------------------------|---------------------------|------------|-----------------|--|--|--|--|--|
| Index No.  | Description            | Material or Model Number | Part Number               | T-0 to C-1 | Required Number |  |  |  |  |  |
|  |                        |                          |                           |            |                 |  |  |  |  |  |
| 1  | Universal Brace        |                          | <a href="#">4A0363-01</a> | 2          |                 |  |  |  |  |  |
| 1a   | Hex Bolt               | 5x12, SS                 | <a href="#">7B02-0512</a> | 2          |                 |  |  |  |  |  |
| 2  | Hoshizaki Emblem Label |                          | <a href="#">4A0560-01</a> | 1          |                 |  |  |  |  |  |
| 3  | Penguin Label          |                          | <a href="#">4A0526-01</a> | 1          |                 |  |  |  |  |  |