

Hoshizaki America, Inc.

Modular Crescent Cuber Serenity Series

Model
KMS-2000MLH



“A Superior Degree
of Reliability”

www.hoshizaki.com

PARTS LIST



Number: 71314
Issued: 4-19-2011
Revised: 11-18-2011

CONTENTS

Auxiliary Codes.....	3
Note About Ordering Parts	3
A. Ice Cuber Assembly and Refrigeration Circuit.....	4
B. Water Circuit	7
C. Control Box Assembly	10
D. Label Location	11
E. Accessories & Packaging	12

Auxiliary Codes

KMS-2000MLH

A-0 March 2011

A-1 November 2011

Auxiliary Code Breakdown

The auxiliary code is the first two characters in the serial number. The first character indicates the year. Years progress or regress in alphabetical order. The series runs from "A" through "V" and the letters "I" and "O" are skipped. The second character indicates significant part changes within a year. Base is "0" and this number advances for each change. In cases where there is a letter in parentheses, this designates the month. This is the last character in the serial number. The series runs from "(A)" through "(M)" and the letter "(I)" is skipped. This designation is only included when identifying a parts change within an auxiliary code.

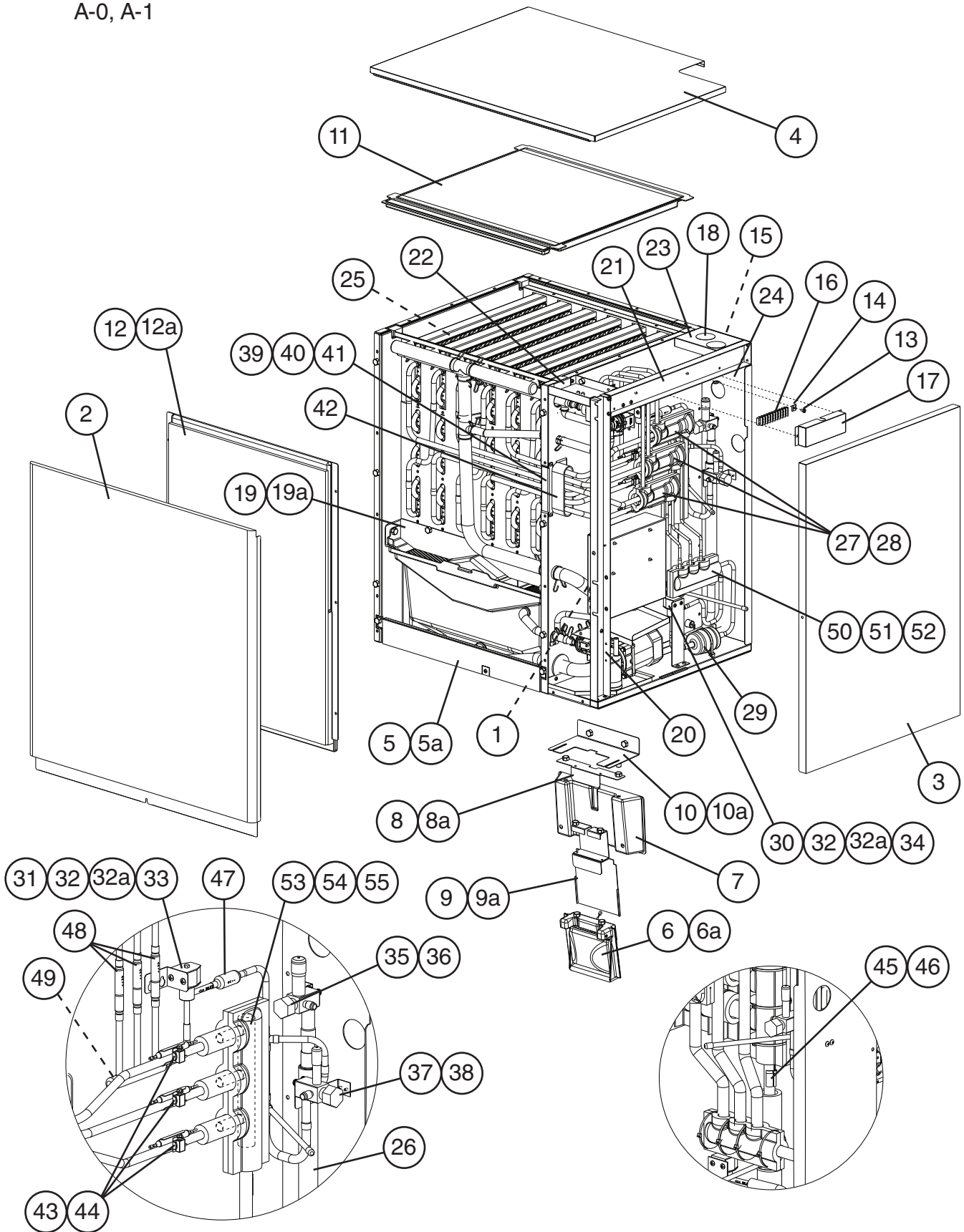
Note About Ordering Parts

Most assemblies cannot be ordered as complete units; parts in the assemblies generally must be ordered separately.

A. Ice Cuber Assembly and Refrigeration Circuit

KMS-2000MLH

A-0, A-1



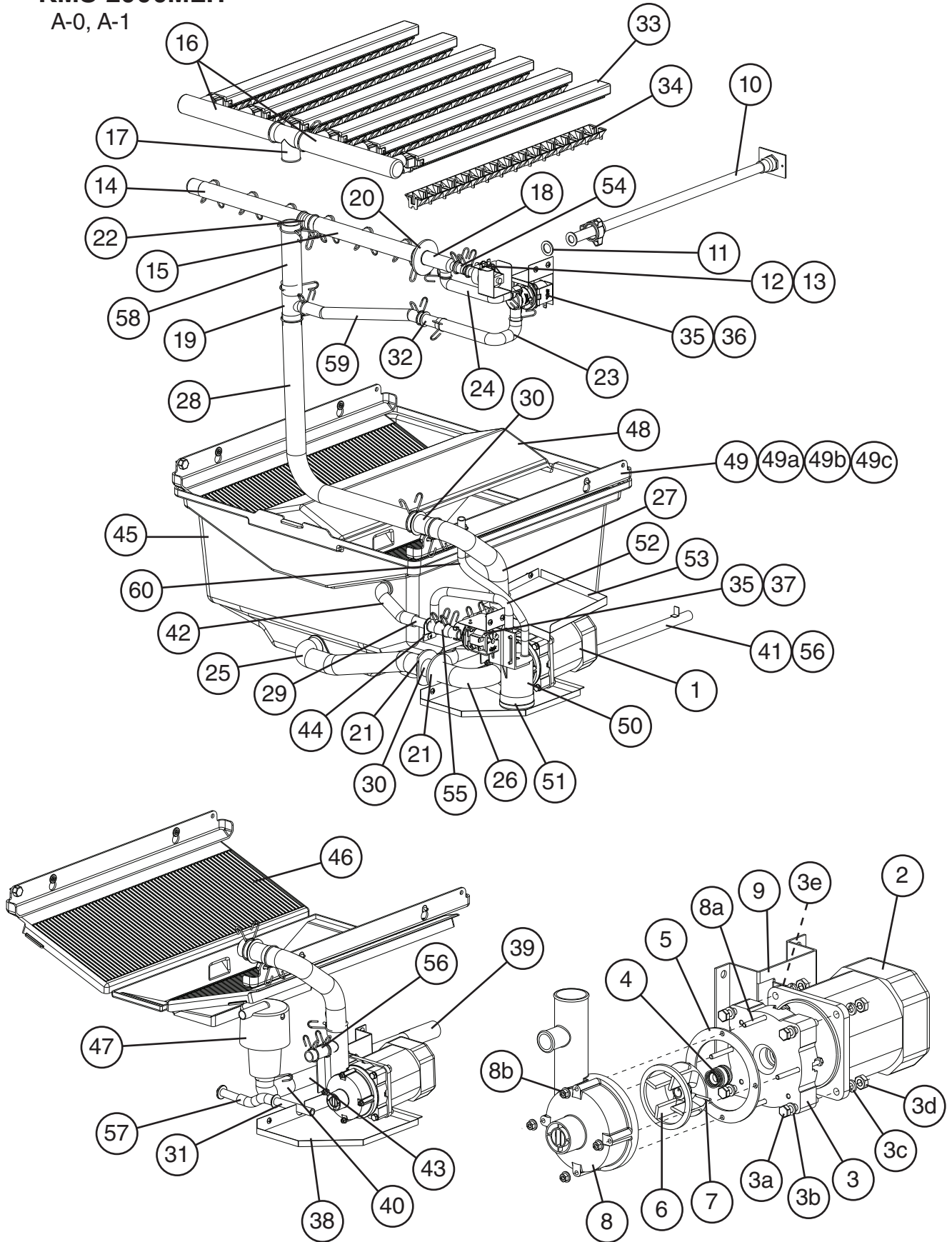
Title: **A. Ice Cuber Assembly and Refrigeration Circuit** Model: **KMS-2000MLH**

Index No.	Description	Material or Model Number	Part Number	Required Number									
				A-0	A-1								
Ice Cuber Assembly Order Assembly Parts Individually			1A1754A01	1	-								
			1A2317A01		1								
1	Control Box Cover		3A5619-01	1	1								
2	Front Panel		2A5200-01	1	1								
3	Right Side Panel		2A5201G01	1	1								
4	Top Panel		2A5300-01	1	1								
5	Front Frame (lower)		4A3542G01	1	1								
5a	Thumbscrew		415949G10	2	2								
6	Bin Control		2A4393G01	1	1								
6a	Thumbscrew		415949G08	2	2								
7	Bin Control Mount		3A3278G01	1	1								
8	Bin Control Cover		4A3580-01	1	1								
8a	Thumbscrew		415949G08	2	2								
9	Extension Bracket		4A4296G01	1	1								
9a	Thumbscrew		415949G08	2	2								
10	Bin Control Bracket		4A4678-01	1	1								
10a	Thumbscrew		415949G08	2	2								
11	Top Insulation		3A3251G01	1	1								
12	Front Insulation		3A5484G01	1	1								
12a	Thumbscrew		415949G10	6	6								
13	Ground Screw		433304-02	1	1								
14	Square Washer		433537-02	1	1								
15	Wire Harness		469256G01	1	1								
16	Terminal Block		4A4201-01	1	1								
17	Terminal Block Cover		4A5058-01	1	1								
18	Dome Plug		4A5015-01	2	2								
19	Splash Curtain		3A6842-01		1								
19a	Thumbscrew		415949G08		2								
Refrigeration Circuit Order Assembly Parts Individually			1A1753A01	1	-								
			1A2311A01		1								
20	Side Frame A		2A5160-01	1	1								
21	Side Frame B		3A3256-01	1	1								
22	Front Frame (upper)		3A3257-01	1	1								
23	Rear Frame		3A5623-01	1	1								
24	Rear Panel		2A5161-01	1	1								
25	Evaporator		2A5154G01	1	-								
			2A6668G01		1								
26	Heat Exchanger		4A4813-01	1	1								
27	Thermostatic Expansion Valve		4A4008-01	3	3								
28	Thermostatic Expansion Valve Cover		3A0944-01	3	3								
29	Drier		4A2663-01	1	1								
30	Liquid Line Valve Body		4A3276-01	1	1								
31	Hot Gas Valve Body		4A3978-01	1	1								
32	Valve Coil (includes item 32a)		4A3277-01	2	2								
32a	Bolt		4A3277F01	2	2								
33	Hot Gas Valve Bracket		4A3890-01	1	1								
34	Liquid Line Valve Bracket		4A4958-01	1	1								

Title: A. Ice Cuber Assembly and Refrigeration Circuit Model: KMS-2000MLH												
Index No.	Description	Material or Model Number	Part Number	Required Number								
				A-0	A-1							
35	Suction Line Shutoff Valve		4A4821-01	1	1							
36	Suction Line Shutoff Valve Bracket		4A4956-01	1	1							
37	Liquid Line Shutoff Valve		4A4822-01	1	1							
38	Liquid Line Shutoff Valve Bracket		4A4957-01	1	1							
39	Insulation Holder		325863-01	1	1							
40	Rubber Insulation A		325864-01	1	1							
41	Rubber Insulation B		325865-01	1	1							
42	Insulation		436671-02	1	1							
43	Thermostatic Expansion Valve Bulb Holder		3A0107-01	3	3							
44	Clamp		443461-02	3	3							
45	Thermistor		P00027-01	1	1							
46	Thermistor Holder		4A4872-01	1	1							
47	Strainer		441569-02	1	1							
48	Check Valve		4A2054-01	3	3							
49	Header-S		441039-02	1	1							
50	Header-S		441038-01	1	1							
51	Header Cover A1		325861-01	1	1							
52	Header Cover A2		325861-02	1	1							
53	Header-L		441040-01	1	1							
54	Header Cover B1		325862-01	1	1							
55	Header Cover B2		325862-02	1	1							

B. Water Circuit KMS-2000MLH

A-0, A-1



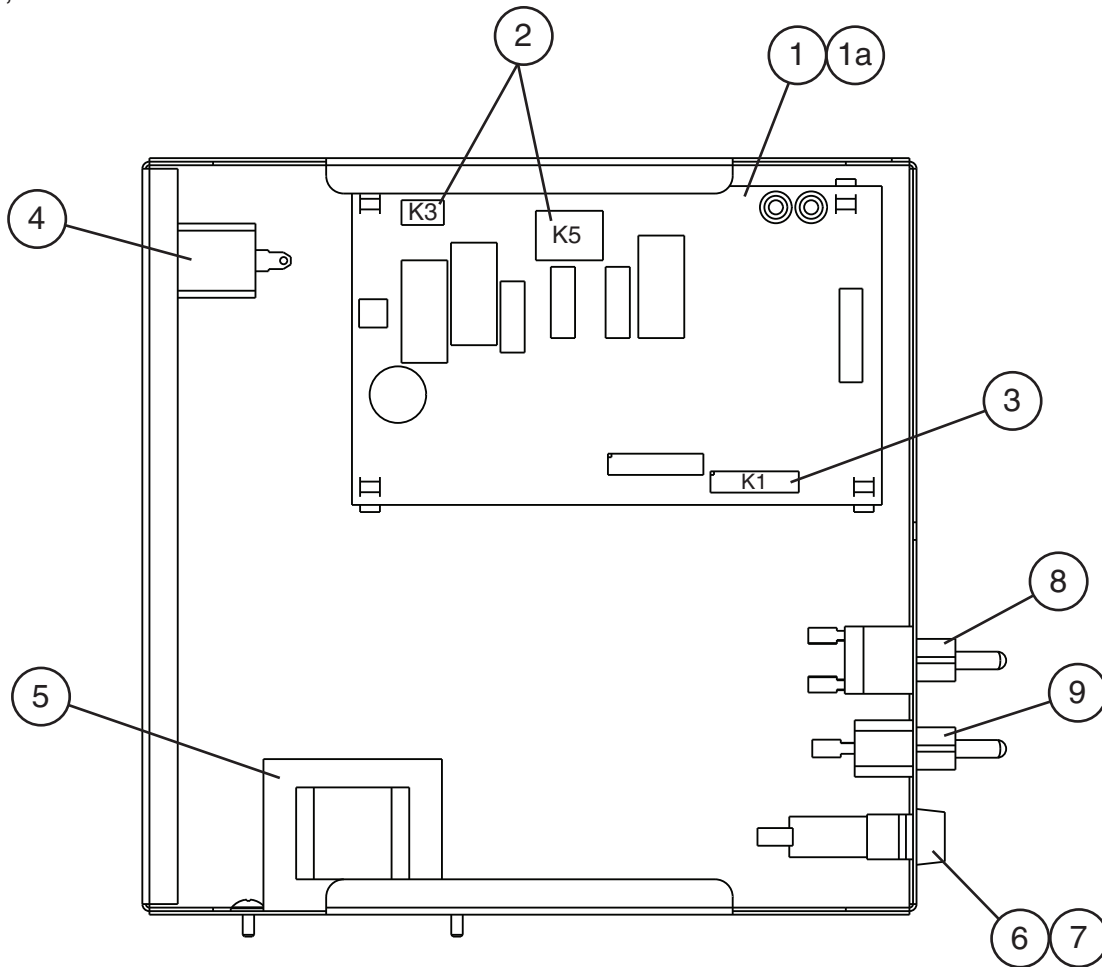
Title: **B. Water Circuit** Model: **KMS-2000MLH**

Index No.	Description	Material or Model Number	Part Number	Required Number										
				A-0	A-1									
Water Circuit			1A1752A01	1	-									
Order Assembly Parts Individually			1A2312A01		1									
1	Pump Motor Assembly (includes items 2 through 8b)	HS-0183	2A3237A01	1	1									
2	Pump Motor		2U0106-01	1	1									
3	Pump Flange		215662-01	1	1									
3a	Hex Bolt	6x40, SS	7B02-0640	4	4									
3b	Flat Washer	M6, SS	7W22-0600	4	4									
3c	Split Lock Washer	M6, SS	7L22-0600	4	4									
3d	Hex Nut	M6, SS	7N12-0600	4	4									
3e	Tooth Washer	M6, SS	7R22-0600	2	2									
4	Mechanical Seal		4A3820-01	1	1									
5	Packing		428547-01	1	1									
6	Impeller		436584-01	1	1									
7	Pin		4A0648-01	1	1									
8	Pump Housing		2A3214-01	1	1									
8a	Hex Bolt	4x55, SS	7B02-0455	4	4									
8b	Hex Flange Nut	4, SS	7J02-0400	4	4									
9	Pump Motor Bracket		3A3252-01	1	1									
10	Water Supply Pipe		4A0768G08	1	1									
11	Rubber Gasket		413854-03	1	1									
12	Inlet Water Valve		4A5251-02	1	1									
13	Inlet Water Valve Bracket		3A5725-01	1	1									
14	Distributor Hose A		325738-01	1	1									
15	Distributor Hose B		325738-02	1	1									
16	Distributor Hose C		325739-02	2	2									
17	Distributor A		4A3528-01	1	1									
18	Distributor B		3A3239-01	1	1									
19	Distributor C		4A3530-01	1	1									
20	Flange		439267-02	1	1									
21	Flange		439267-03	2	2									
22	Joint Pipe		439297-02	1	1									
23	Inlet Hose		3A3496-01	1	1									
24	Outlet Hose		3A3497-01	1	1									
25	Suction Hose A		3A3234-01	1	1									
26	Suction Hose B		4A4850-01	1	1									
27	Discharge Hose A		4A4847-01	1	1									
28	Discharge Hose B		4A4856-01	1	1									
29	Evaporator Case Pipe A		4A3524-01	1	1									
30	Evaporator Case Pipe C		4A3526-01	2	2									
31	Evaporator Case Pipe D		4A3527-01	1	1									
32	Evaporator Case Pipe E		4A3765-01	1	1									
33	Spray Tube		437049G04	6	6									
34	Spray Guide		2A4282-03	6	6									
35	Wash Valve/Drain Valve		4A3722-05	2	2									
36	Wash Valve Bracket		4A3569-01	1	1									
37	Drain Valve Bracket		4A3570-01	1	1									
38	Condensate Drain		3A5841G01	1	1									

Title: **B. Water Circuit** Model: **KMS-2000MLH**

Index No.	Description	Material or Model Number	Part Number	Required Number											
				A-0	A-1										
39	Drain Hose		434808-01	1	1										
40	Drain Hose		4A3537-01	1	1										
41	Drain Pipe		4A3568G01	1	1										
42	Overflow Drain Hose		4A4848-01	1	1										
43	PVC Pipe		433509-03	1	1										
44	Pipe Stopper		4A3767-01	1	1										
45	Water Tank		1A1622G01	1	1										
46	Cube Guide		1A0966-01	2	2										
47	Overflow Cap		2A3215-01	1	1										
48	Tank Separator		2A3220-01	1	1										
49	Side Separator		3A3235-01	2	-										
49a	Collar		435269-01	4	-										
49b	Flat Head Screw	4x12, SS	7P22-0412	4	-										
49c	Thumbscrew		415949G10	2	-										
50	Float Switch		4A3624-04	1	1										
51	Float Switch Connector		3A4169-01	1	1										
52	Float Hose		4A4851-01	1	1										
53	Motor Cover		4A3586-01	1	1										
54	Vinyl Hose	L=40	7716-1216	1	1										
55	Vinyl Hose	L=45	7716-1519	1	1										
56	Vinyl Hose	L=50	7716-1519	2	2										
57	Vinyl Hose	L=80	7716-1216	1	1										
58	Vinyl Hose	L=124	7716-2732	1	1										
59	Vinyl Hose	L=320	7716-1519	1	1										
60	Silicone Hose	L=300	7730I3812	1	1										
Hose Clamps															
	Hose Clamp	25mm, SS	427443-03	3	3										
	Hose Clamp	18mm, SS	427443-05	8	8										
	Hose Clamp	20mm, SS	427443-06	4	4										
	Hose Clamp	13.5mm, SS	427443-07	6	6										
	Hose Clamp	27mm, SS	427443-08	1	1										
	Hose Clamp	32mm, SS	427443-09	8	8										

C. Control Box Assembly
KMS-2000MLH
 A-0, A-1

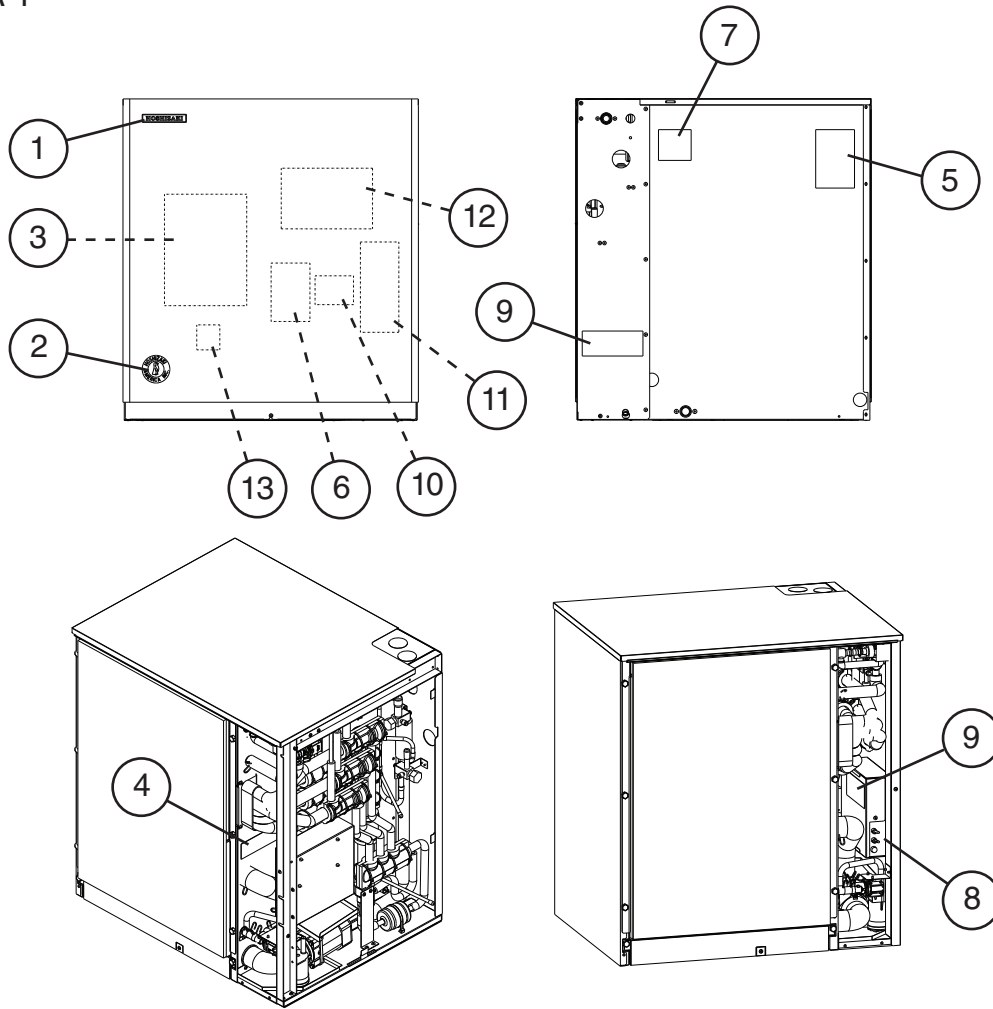


Title: C. Control Box Assembly Model: KMS-2000MLH										
Index No.	Description	Material or Model Number	Part Number	Required Number						
				A-0	A-1					
Control Box Assembly			3A5613A01	1						
Order Assembly Parts Individually										
1	"H" Control Board	Ver. 2.5	P00013-02	1						
1a	Board Support		4A0336-03	4						
2	Wire Harness (K3, K5)		3A5818G01	1						
3	Wire Harness (K1)		4A4950G01	1						
4	Pump Motor Capacitor	10MFD, 250VAC	443192-01	1						
5	Control Transformer		3A4395-01	1						
6	Fuse Holder		4A3449-01	1						
7	Fuse	10A, 250VAC	4A0893-07	1						
8	Control Switch		443119-01	1						
9	Service Switch		4A0985-01	1						

D. Label Location

KMS-2000MLH

A-0, A-1



Title: D. Label Location		Model: KMS-2000MLH		Required Number											
Index No.	Description	Material or Model Number	Part Number	A-0	A-1										
				Label Location			2A5393A01	1							
Order Assembly Parts Individually															
1	Emblem		4A0560-01	1											
2	Penguin-HA-R Label		4A0526-01	1											
3	Maintenance Label		2A6398-01	1											
4	Warning Label (K)		4A4736-01	1											
5	Nameplate		2A5397-01	1											
6	Rating Label		2A5398-01	1											
7	Instruction Label		444575-01	1											
8	Manual Label		3A3331-01	1											
9	Warning Label		4A4209-01	2											
10	Alarm Label		4A4794-01	1											
11	Control Board Label		3A5616-01	1											
12	Wiring Label		2A5250-01	1											
13	Caution Label		4A5356-01	1											

E. Accessories & Packaging

KMS-2000MLH

A-0, A-1

Title: E. Accessories & Packaging Model: KMS-2000MLH												
Index No.	Description	Material or Model Number	Part Number	Required Number								
				A-0	A-1							
1	Instruction Manual		91A1YJ10B	1								
2	Universal Brace		4A0363-01	2								
2a	Hex Bolt	5x12, SS	7B02-0512	2								
3	1/2" Elbow		417395-03	1								
4	3/4" Elbow		417395-05	1								
5	1/2" Street Elbow		419753-02	1								
6	3/4" Street Elbow		419753-04	1								
7	Non-Corrosive Sealant		8601-0111	1								
	Packaging		2A5858A01	1								