

Hoshizaki America, Inc.

Modular Crescent Cuber Serenity Series

Model
KMS-830MLH



“A Superior Degree
of Reliability”

www.hoshizaki.com

PARTS LIST



Number: 71324
Issued: 5-17-2011

CONTENTS

Auxiliary Codes.....	3
Note About Ordering Parts	3
A. Ice Cuber Assembly and Refrigeration Circuit.....	4
B. Water Circuit	7
C. Control Box Assembly	10
D. Label Location	11
E. Accessories & Packaging	12

Auxiliary Codes

KMS-830MLH A-0 April 2011

Auxiliary Code Breakdown

The auxiliary code is the first two characters in the serial number. The first character indicates the year. Years progress or regress in alphabetical order. The series runs from "A" through "V" and the letters "I" and "O" are skipped. The second character indicates significant part changes within a year. Base is "0" and this number advances for each change. In cases where there is a letter in parentheses, this designates the month. This is the last character in the serial number. The series runs from "(A)" through "(M)" and the letter "(I)" is skipped. This designation is only included when identifying a parts change within an auxiliary code.

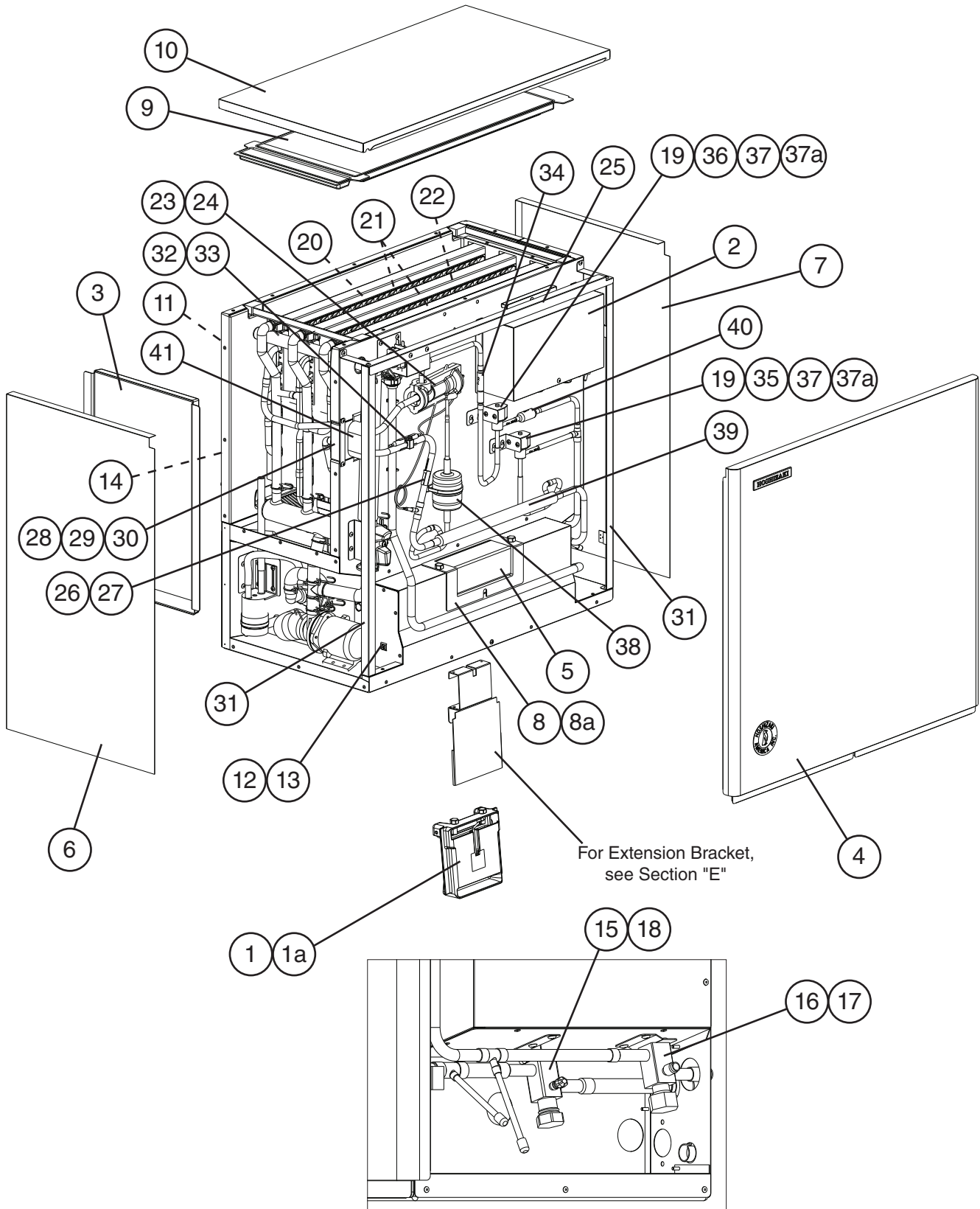
Note About Ordering Parts

Most assemblies cannot be ordered as complete units; parts in the assemblies generally must be ordered separately.

A. Ice Cuber Assembly and Refrigeration Circuit

KMS-830MLH

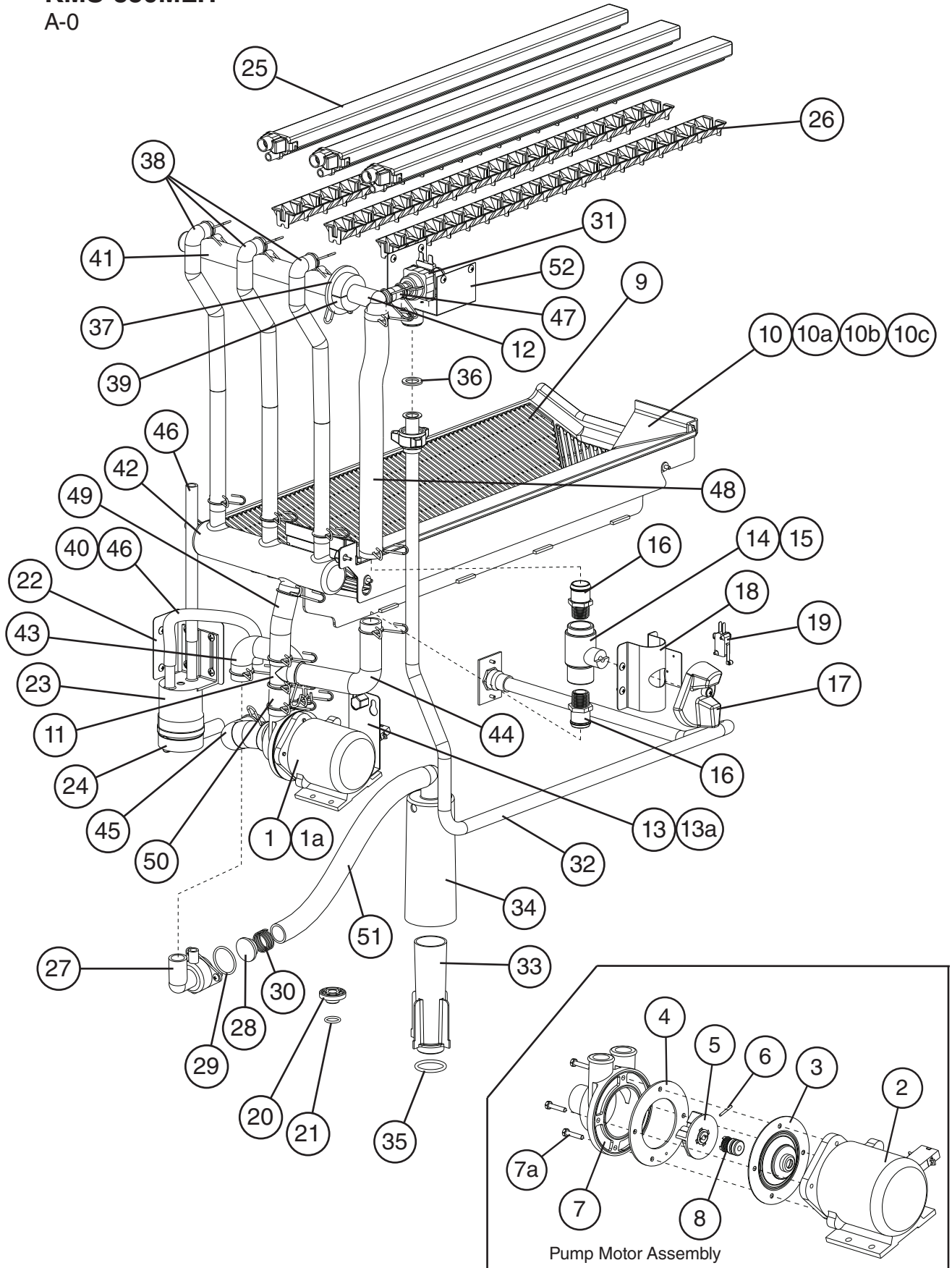
A-0



Title: A. Ice Cuber Assembly and Refrigeration Circuit Model: KMS-830MLH												
Index No.	Description	Material or Model Number	Part Number	Required Number								
				A-0								
Ice Cuber Assembly Order Assembly Parts Individually			1A2146A01	1								
1	Bin Control		2A4393G01	1								
1a	Thumbscrew		415949G10	2								
2	Control Box Cover		3A6373-01	1								
3	Insulation Panel		3A6364G01	1								
4	Front Panel		2A6273G01	1								
5	Bin Control Insulation		4A3068-01	1								
6	Left Side Panel		2A6261G01	1								
7	Right Side Panel		2A6287G01	1								
8	Bin Control Cover		3A2642-01	1								
8a	Thumbscrew		415949G10	2								
9	Top Insulation		3A6363G01	1								
10	Top Panel		2A6262-01	1								
11	Wire Harness		469256G01	1								
12	Ground Screw		433304-02	1								
13	Square Washer		433537-02	1								
14	Taper Collar		4H0171-01	2								
Refrigeration Circuit Order Assembly Parts Individually												
			1A2144A01	1								
15	Suction Line Shutoff Valve		4A3490-01	1								
16	Liquid Line Shutoff Valve		4A4822-01	1								
17	Liquid Line Shutoff Valve Bracket		4A5298-01	1								
18	Suction Line Shutoff Valve Bracket		4A5299-01	1								
19	Hot Gas Valve/Liquid Line Valve Bracket		4A3890-01	2								
20	Evaporator (includes items 21 and 22)		2A6365G01	1								
21	Outer Evaporator Plate		2A6363G01	2								
22	Center Evaporator Plate		2A6364G01	1								
23	Expansion Valve		4A5302-01	1								
24	Expansion Valve Cover		3A0944-01	1								
25	Front Frame		2A6260-01	1								
26	Thermistor		429006-03	1								
27	Thermistor Holder		427430-01	1								
28	Insulation Holder		4A5280-01	1								
29	Rubber Insulation A		3A6362-01	1								
30	Rubber Insulation B		3A6361-01	1								
31	Side Frame		3A6384-01	2								
32	Expansion Valve Bulb Holder		3A0107-01	1								
33	Clamp		443461-02	1								
34	Check Valve		4A2054-01	1								
35	Line Valve Body		4A3276-01	1								
36	Hot Gas Valve Body		4A3978-01	1								
37	Valve Coil		4A3277-01	2								
37a	Bolt		4A3277F01	2								

Title: A. Ice Cuber Assembly and Refrigeration Circuit Model: KMS-830MLH													
Index No.	Description	Material or Model Number	Part Number	Required Number									
				A-0									
38	Drier		4A2663-01	1									
39	Heat Exchanger		4A3754-01	1									
40	Strainer		441569-02	1									
41	Insulation		436671-01	1									

B. Water Circuit
KMS-830MLH
 A-0



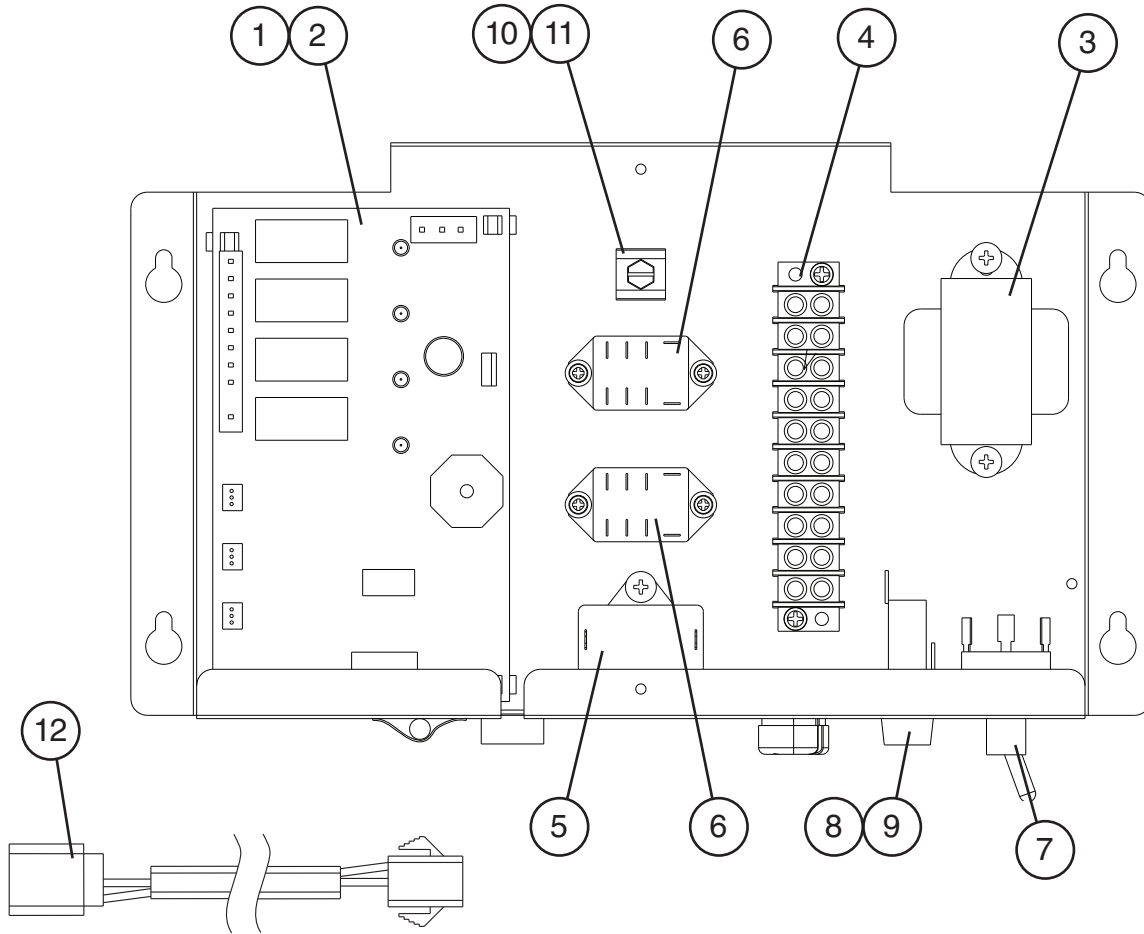
Title: B. Water Circuit Model: KMS-830MLH												
Index No.	Description	Material or Model Number	Part Number	Required Number								
				A-0								
Water Circuit Order Assembly Parts Individually			1A2135A01									
1	Pump Motor Assembly (includes items 2 through 8)	HS-0176	3A2638A03	1								
1a	Hex Head Bolt w/Washer	4x12, SS	7B0230412	2								
2	Pump Motor		2A2758-01	1								
3	Pump Flange		3A2988-01	1								
4	Pump Gasket		4A2974-01	1								
5	Impeller		433522-01	1								
6	Pin		4A0648-01	1								
7	Pump Housing		211409-01	1								
7a	Screw	4x20, Geomet	4A3871-01	4								
8	Mechanical Seal		465627-01	1								
9	Cube Guide A		1A2081-01	1								
10	Cube Guide B		1A2082-01	1								
10a	Collar		435269-01	2								
10b	Flat Head T2 Screw	4x12, SS	7P22-0412	2								
10c	Thumbscrew		415949G10	1								
11	Distributor		432426-01	1								
12	Distributor B		3A6353-01	1								
13	Water Pump Bracket		3A6352-01	1								
13a	Thumbscrew		415949G12	1								
14	Ball Valve Assembly (includes items 15 and 16)	S-0761	442137A01	1								
15	Ball Valve		439293-01	1								
16	Male Adaptor		325826-01	2								
17	Handle		215383-01	1								
18	Valve Holder		3A1178-01	1								
19	Microswitch		4A2546-01	1								
20	Drain Plug		309246-01	1								
21	"O" Ring		7611-P015	1								
22	Float Switch Bracket		4A5192-01	1								
23	Float Switch		4A3624-01	1								
24	Float Switch Connector		426799-03	1								
25	Spray Tube		4A3715G01	3								
26	Spray Guide		118939P01	3								
27	Drain Valve Housing		323613-01	1								
28	Valve Seat		433705-01	1								
29	"O" Ring		7611-G035	1								
30	Spring		322110-01	1								
31	Inlet Water Valve		3U0111-03	1								
32	Water Supply Pipe		3A6358G01	1								
33	Overflow Pipe		430722-08	1								
34	Overflow Cap		321002-01	1								
35	"O" Ring		4A1234-01	1								
36	Rubber Gasket		413854-03	1								
37	Flange		439267-01	1								
38	Elbow		3A6329-01	3								
39	Insulation (E)		4A0392-01	1								

Title: B. Water Circuit Model: KMS-830MLH													
Index No.	Description	Material or Model Number	Part Number	Required Number									
				A-0									
40	Spring		435825-01	1									
41	Distributor Hose A		325738-01	1									
42	Distributor Hose C		3A6345-01	1									
43	Drain Hose		4A5270-01	1									
44	Bypass Hose		4A5278-01	1									
45	Suction Hose		4A3001-02	1									
46	Silicone Hose	L=180	7730I3896	2									
47	Vinyl Hose	L=40	7716-1216	1									
48	Vinyl Hose	L=315	7716-2025	1									
49	Vinyl Hose	L=100	7716-2025	1									
50	Vinyl Hose	L=40	7716-2025	1									
51	Vinyl Hose	L=335	7716-2025	1									
52	Water Valve Bracket		3A6389-01	1									
Hose Clamps													
	Hose Clamp	25mm, SS	427443-03	11									
	Hose Clamp	16.5mm, SS	427443-04	2									
	Hose Clamp	18mm, SS	427443-05	3									
	Hose Clamp	20mm, SS	427443-06	3									

C. Control Box Assembly

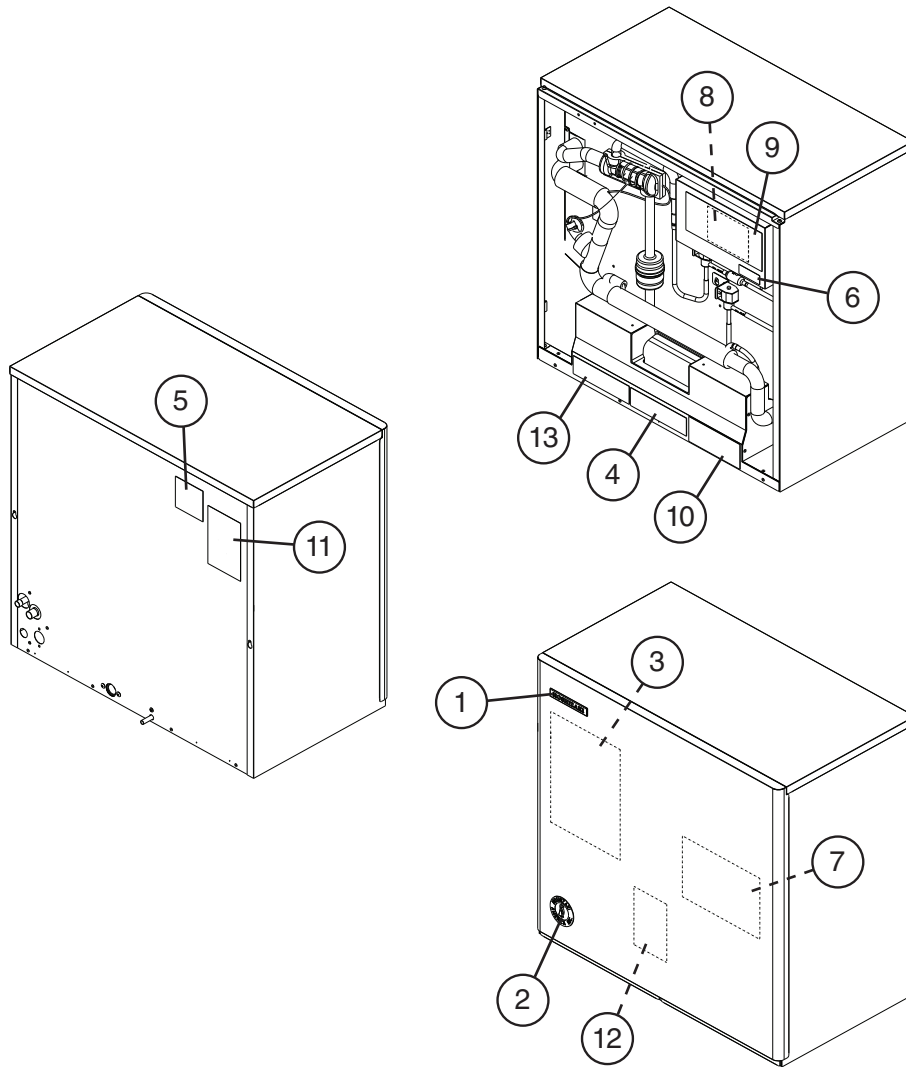
KMS-830MLH

A-0



Title: C. Control Box Assembly		Model: KMS-830MLH		Required Number							
Index No.	Description	Material or Model Number	Part Number	A-0							
Control Box Assembly			3A6374A01	1							
Order Assembly Parts Individually											
1	Control Board		2A3792-01	1							
2	Board Support		4A0336-03	4							
3	Control Transformer		3A0172-01	1							
4	Terminal Block		4A4201-01	1							
5	Pump Motor Capacitor	5.5MFD, 250VAC	443192-03	1							
6	Relay		406132-07	2							
7	Control Switch		443119-01	1							
8	Fuse Holder		4A3449-01	1							
9	Fuse	10A, 250VAC	4A0893-07	1							
10	Ground Screw		433304-02	1							
11	Square Washer		433537-02	1							
12	Wire Harness (Bin Control)		4A2200G04	1							

D. Label Location
KMS-830MLH
A-0



Title: D. Label Location Model: KMS-830MLH															
Index No.	Description	Material or Model Number	Part Number	Required Number											
				A-0											
Label Location			2A6399A01	1											
Order Assembly Parts Individually															
1	Emblem		4A0560-01	1											
2	Penguin-HA-R Label		4A0526-01	1											
3	Maintenance Label		2A6574-01	1											
4	Warning Label (K)		4A4736-01	1											
5	Instruction Label		444575-01	1											
6	Manual Label		3A6378-01	1											
7	Wiring Label		3A6273-01	1											
8	Alarm Label		4A3517-01	1											
9	Control Board Label		3A4799-01	1											
10	Warning Label		4A4209-01	1											
11	Nameplate		2A3298-06	1											
12	Rating Label		2A3300-06	1											
13	Valve Operation Label		439541-01	1											

E. Accessories & Packaging

KMS-830MLH

A-0

Title: E. Accessories & Packaging Model: KMS-830MLH												
Index No.	Description	Material or Model Number	Part Number	Required Number								
				A-0								
1	Instruction Manual		91A1YG10A	1								
2	Bin Control Extension Bracket		4A4296G01	1								
2a	Thumbscrew		415949G10	2								
3	Universal Brace		4A5357-01	2								
3a	Hex Bolt	5x12, SS	7B02-0512	2								
	Packaging		2A6404A01									