

NO. 71121

ISSUED: JAN. 26, 1998

REVISED: SEPT. 12, 2000



**HOSHIZAKI
MODULAR CRESCENT CUBER**

**MODEL
KML-400MAE
KML-400MWE**

(FINAL) PARTS LIST

KML-400MAE

| | |
|-----|-------------|
| G-0 | MARCH, 1997 |
| H-0 | DEC., 1997 |
| H-1 | APRIL, 1998 |
| H-2 | JUNE, 1998 |
| H-3 | OCT., 1998 |
| J-0 | DEC., 1998 |

KML-400MWE

| | |
|-----|-------------|
| G-0 | MARCH, 1997 |
| H-1 | JAN., 1998 |
| H-2 | MAY, 1998 |
| H-3 | JUNE, 1998 |
| H-4 | OCT., 1998 |
| J-0 | DEC., 1998 |

MATERIAL ABBREVIATIONS

ALUMINUM

AL = Aluminum

COPPER

CU = Copper

PLASTIC

ABS = Acrylonitrile -butadiene - styrene
 AC = Polyacetal
 EVA = Ethylene vinyl acetate
 PA = Polyamide = Nylon
 PC = Polycarbonate
 PE = Polyethylene
 PES = Polyester
 PETP = Polyethylene terephthalate = Tetlon
 PP = Polypropylene
 PS = Polystyrene
 PTFE = Polytetrafluoroethylene = Teflon
 PUR = Polyurethane
 PVC = Polyvinyl chloride

RUBBER

VN = Vinyl Nitrile
 EPDM = EP rubber
 NBR = Nitrile butadiene rubber
 NR = Natural rubber
 NP = Neoprene
 SLR = Silicone rubber
 SY.R = Synthetic rubber
 EPH = Epichlorohydrin

STEEL

GS = Galvanized steel
 SS = Stainless steel
 PS = Plated steel
 PAS = Primed steel

AUXILIARY CODE

Ex.1

K-0
 └──┬── Parts are the same as in the preceding year.
 └──┴── "K" is the tenth in alphabetical order with "I" skipped. So, "K" indicates "1990".

(Note) - = Part deleted.

x = Part deleted and replaced by "o" part.

o = New part for "x" in the same auxiliary code.

Ex.2

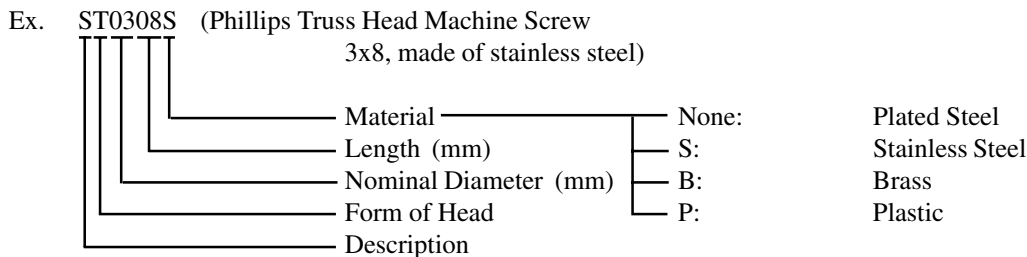
A-1
 └──┬── "A" is the first in alphabetical order. So, "A" indicates "1991".
 └──┴──

Ex.3

A-2
 └──┬── Each time a part is changed in a year, this number advances.

FASTENER ABBREVIATION LIST

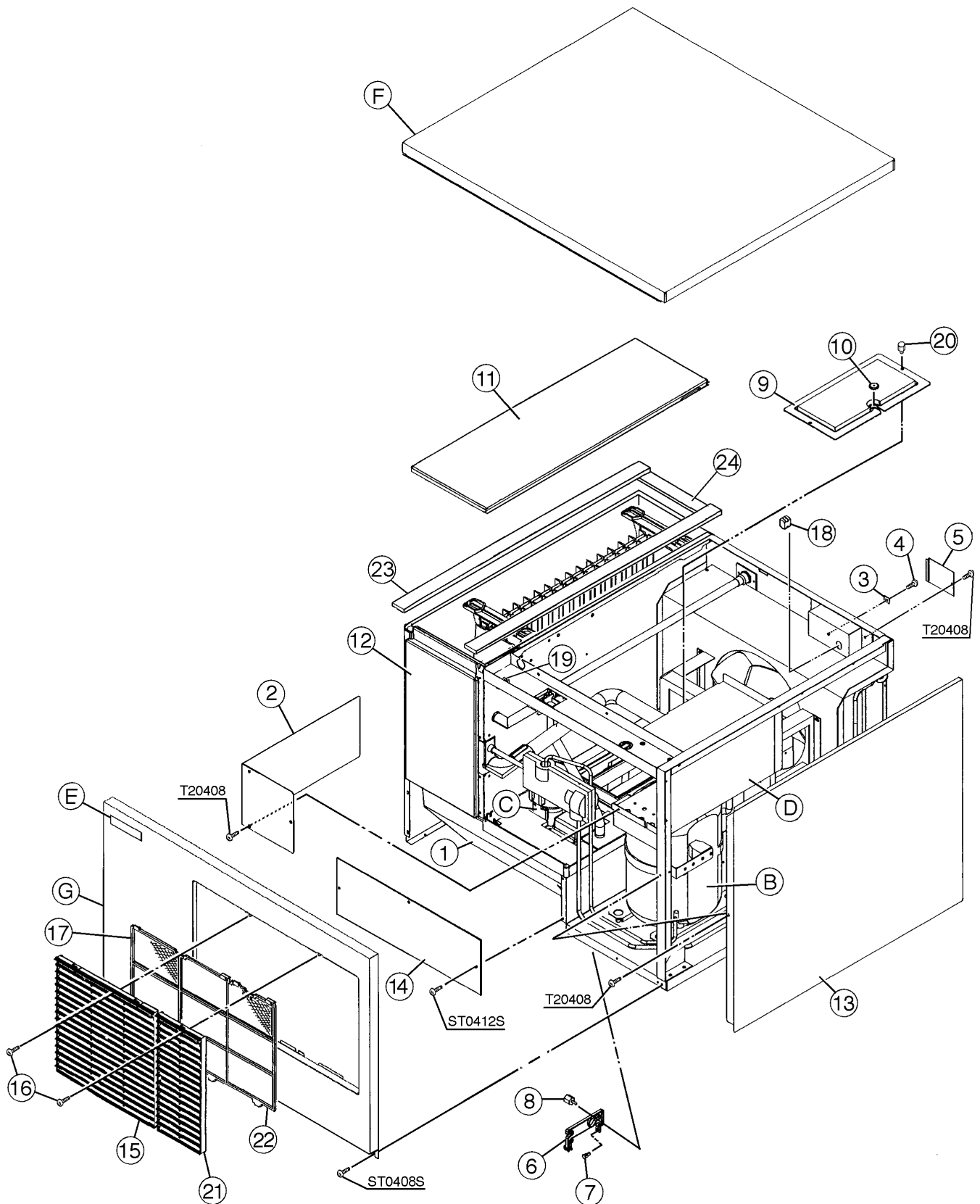
| | |
|-----|---|
| ST | Phillips Truss Machine Screw |
| SP | Phillips Pan Head Machine Screw |
| SF | Phillips Flat Head Machine Screw |
| SS | Phillips Pan Head Machine Screw with Split Lock Washer |
| SW | Phillips Pan Head Machine Screw with Split Lock Washer and Flat Washer |
| T1 | Phillips Truss Head Tapping Screw (Correspond to Type A) |
| T2 | Phillips Truss Head Tapping Screw (Correspond to Type B) |
| T3 | Phillips Truss Head Tapping Screw (Correspond to Type C) |
| FT | Phillips Truss Head Tapping Screw (Special) |
| BH | Hexagon Head Bolt |
| BC | Socket Head Cap Screw |
| BS | Hexagon Bolt with Split Washer |
| BW | Hexagon Bolt with Split Washer and Flat Washer |
| BF | Hexagon Flange Bolt |
| BR | Cross-Recessed Hexagon Head Bolt |
| BRW | Cross-Recessed Hexagon Head Bolt with Split Lock Washer and Flat Washer |
| WL | Split Lock Washer |
| WT | External Tooth Washer |
| WF | Flat Washer |
| WS | Spring Washer |
| NH | Hexagon Nut |
| NF | Hexagon Flange Nut |
| NC | Hexagon Cap Nut |
| NS | Square Nut |
| NW | Wing Nut |

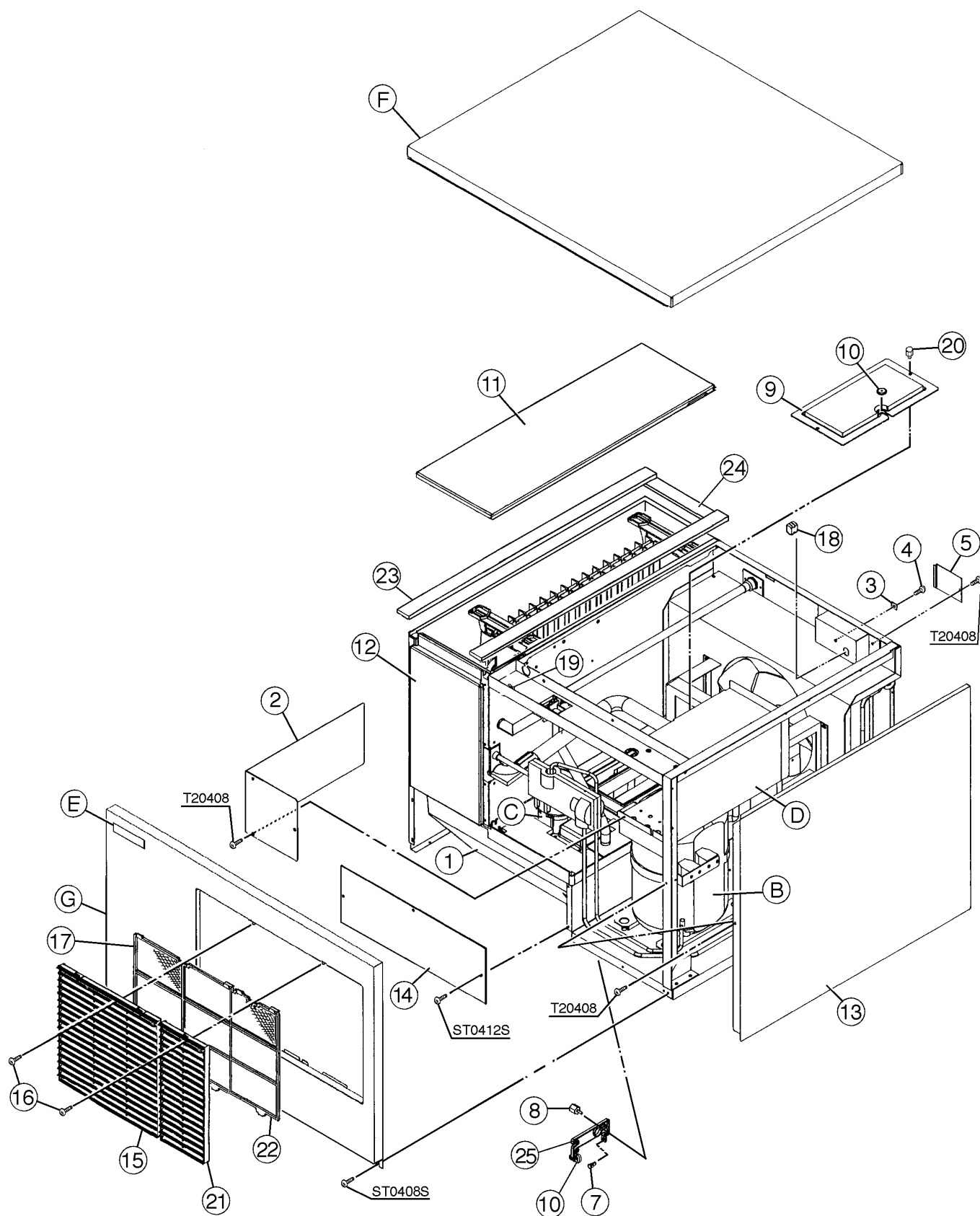


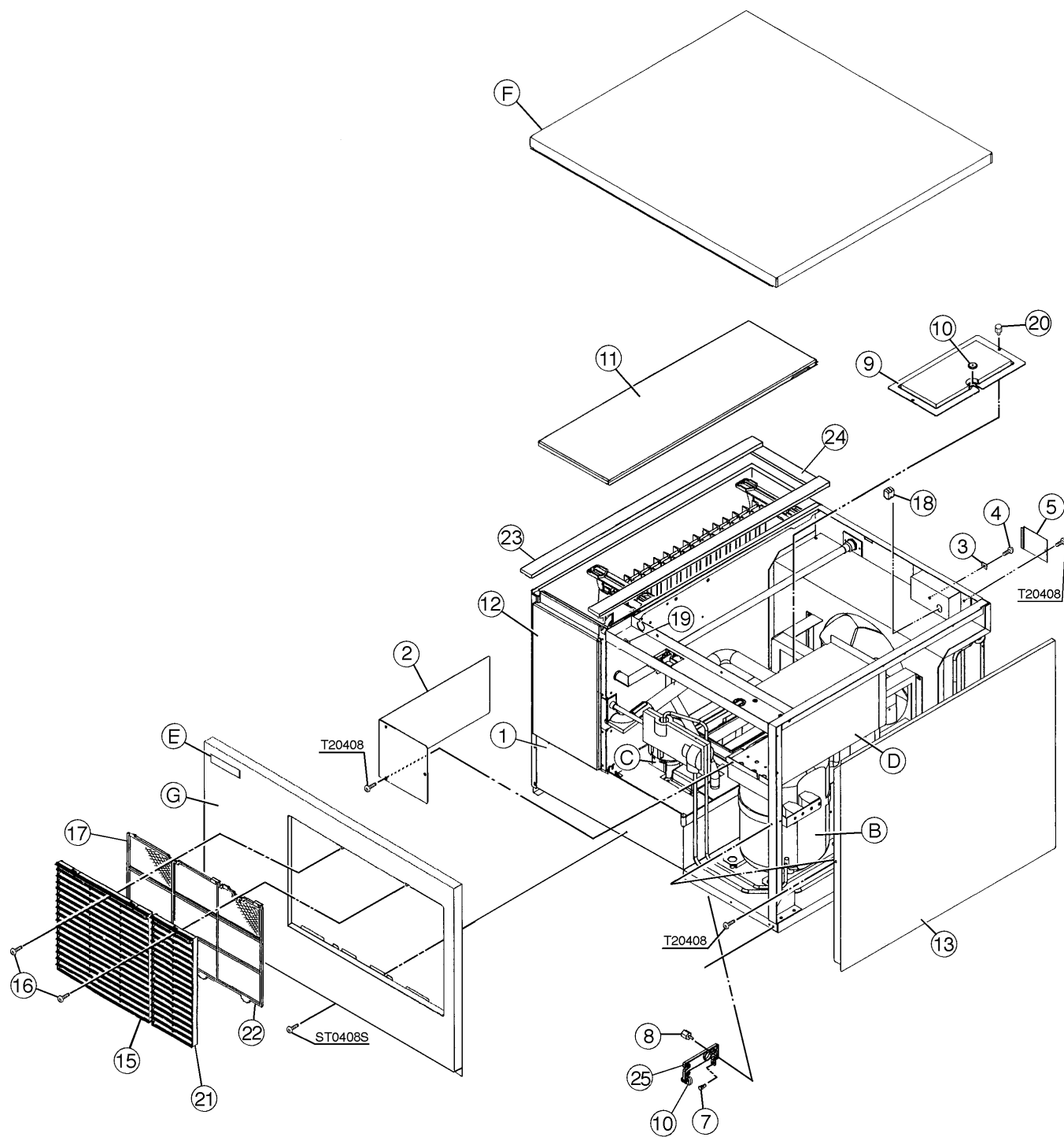
(Note) Second character is numerical except toe list.

Ex. S1, S2, B3 etc.

And abbreviations and names are shown under the illustration.





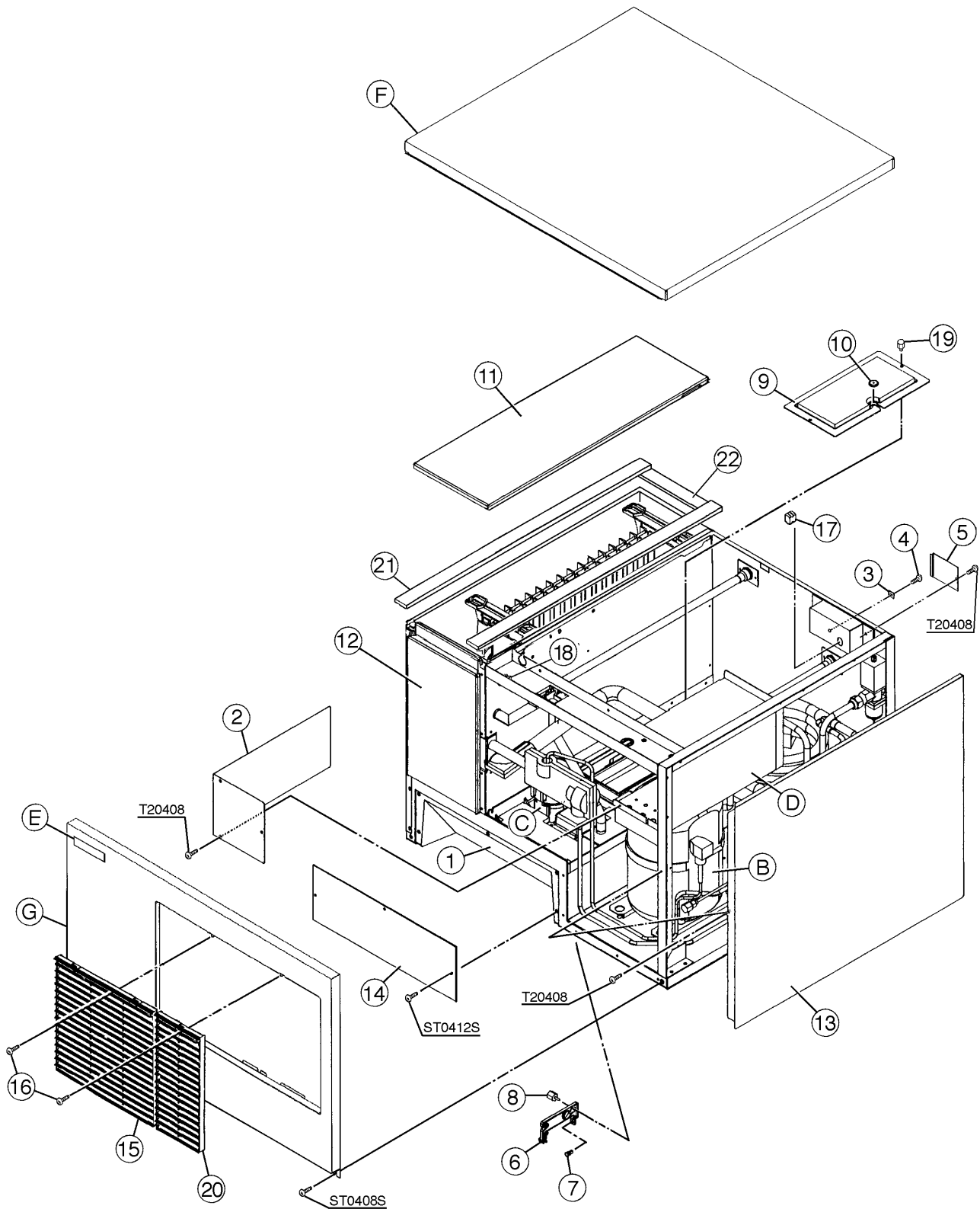


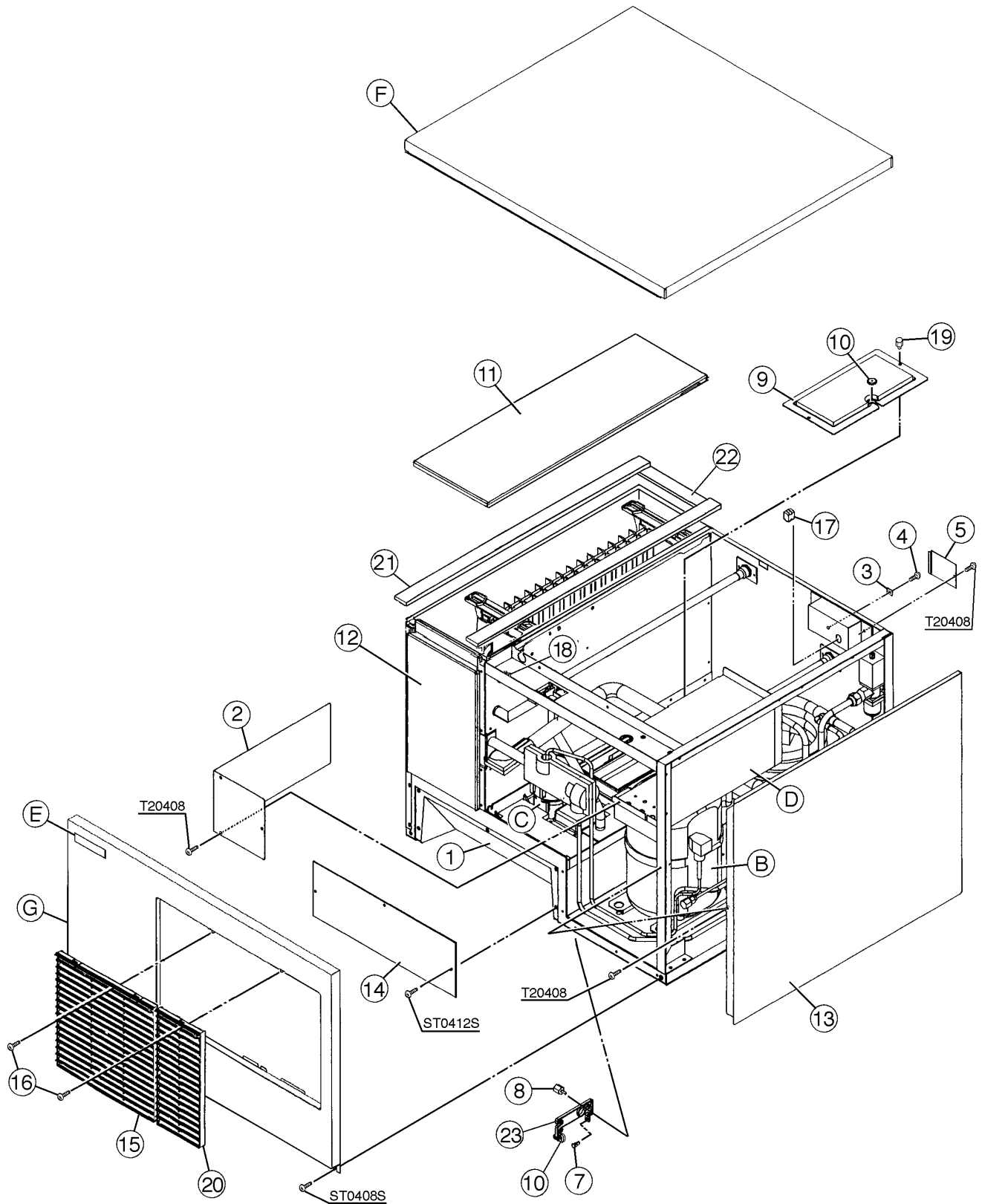
HA

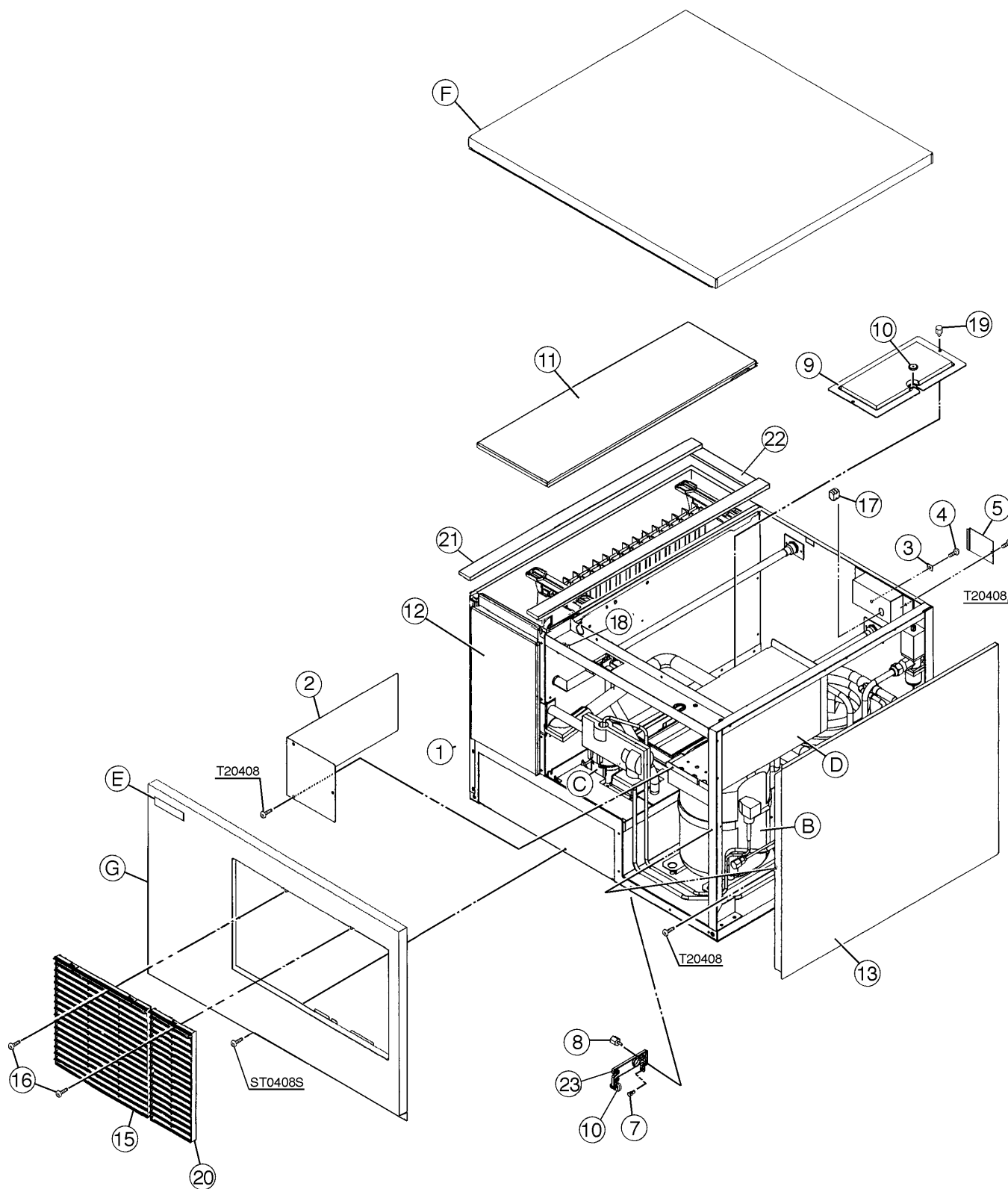
| MODEL: KML-400MAE TITLE: A. ICE CUBER ASSEMBLY | | | | | | | | |
|--|-----------------------|--------------------------|---------------------------|---------------------------|-----|-----|----------------------------|----------|
| INDEX NO. | DESCRIPTION | MATERIAL OR MODEL NUMBER | PART NUMBER | REQUIRED NUMBER | | | | |
| | | | | G-0 H-0 | H-1 | H-2 | H-3 J02385M- J02784B | J02785C- |
| B | REFRIGERATION CIRCUIT | - | 2A0718A01 | 1 | 1 | 1 | x1 | |
| | | - | 1A0386A01 | | | | o1 | 1 |
| C | WATER CIRCUIT | - | 2A0692A01 | 1 | 1 | - | | |
| | | - | 2A0692A02 | | | 1 | 1 | - |
| | | - | 1A0438A01 | | | | | 1 |
| D | CONTROL BOX ASSEMBLY | - | 2A0657A01 | 1 | - | | | |
| | | - | 2A0657A05 | | 1 | 1 | 1 | 1 |
| | T2 SCREW | 4X8 | 7P31-0408 | 3 | 3 | 3 | 3 | 3 |
| E | LABEL LOCATION | - | 3A0676A01 | 1 | - | | | |
| | | - | 3A0676A02 | | 1 | 1 | 1 | - |
| | | - | 3A1372A01 | | | | | 1 |
| F | TOP PANEL ASSEMBLY | - | 3A0674A01 | 1 | 1 | 1 | 1 | 1 |
| G | FRONT PANEL ASSEMBLY | - | 3A0905A01 | 1 | 1 | 1 | 1 | - |
| | | - | 3A1273A01 | | | | | 1 |
| | TRUSS HEAD SCREW | 4X8, SS | 7C32-0408 | 2 | 2 | 2 | 2 | 1 |
| 1 | EVAPORATOR CASE | - | 2A0687G01 | 1 | 1 | 1 | 1 | - |
| | | - | 2A1448G01 | | | | | 1 |
| 2 | CONTROL BOX COVER | GS | 3A0594-01 | 1 | 1 | 1 | 1 | 1 |
| | | T2 SCREW | 4X8 | 7P31-0408 | 3 | 3 | 3 | 3 |
| 3 | SQUARE WASHER | BRASS | 433537-02 | 1 | 1 | 1 | 1 | 1 |
| 4 | SCREW - GROUNDING | BRASS | 433304-02 | 1 | 1 | 1 | 1 | 1 |
| 5 | JUNCTION BOX COVER | GS | 433410-01 | 1 | 1 | 1 | 1 | 1 |
| | | T2 SCREW | 4X8 | 7P31-0408 | 1 | 1 | 1 | 1 |
| 6 | BULB HOLDER | PE | 328919-01 | 1 | 1 | 1 | - | |
| 7 | SPACER | PE | 443545-01 | 1 | 1 | 1 | 1 | 1 |
| 8 | THUMBSCREW | SS, ABS | 415949G03 | 2 | 2 | 2 | 2 | 2 |
| 9 | BIN CONTROL COVER | GS | 3A0664G01 | 1 | 1 | 1 | 1 | 1 |

HA

| MODEL: KML-400MAE TITLE: A. ICE CUBER ASSEMBLY | | | | | | | | |
|--|------------------------------|--------------------------|-------------|-----------------|-----|-----|----------------------------|----------|
| INDEX NO. | DESCRIPTION | MATERIAL OR MODEL NUMBER | PART NUMBER | REQUIRED NUMBER | | | | |
| | | | | G-0 H-0 | H-1 | H-2 | H-3 J02385M- J02784B | J02785C- |
| 10 | CAPILLARY RING | EP RUBBER | 425307-01 | 1 | 1 | 1 | 1 | 1 |
| 11 | TOP INSULATION | PP | 215730G01 | 1 | 1 | 1 | 1 | 1 |
| 12 | FRONT INSULATION | PP | 2A0664G01 | 1 | 1 | 1 | 1 | 1 |
| 13 | SIDE PANEL (R) | SS | 2A0649G01 | 1 | 1 | 1 | 1 | - |
| | | SS | 2A1456G01 | | | | | 1 |
| | T2 SCREW | 4X8, SS | 7P32-0408 | 1 | 1 | 1 | | |
| 14 | COVER - MANUAL FILL | ABS, POLYOLEFIN | 4A1015G01 | 1 | 1 | 1 | 1 | - |
| | TRUSS HEAD SCREW | 4X12, SS | 7C32-0412 | 3 | 3 | 3 | 3 | - |
| 15 | LOUVER (B) | ABS | 103121-05 | 1 | 1 | 1 | 1 | 1 |
| 16 | TAPPING SCREW (BLACK) | STEEL, 4X8 | 433954-01 | 2 | 2 | 2 | 2 | 2 |
| 17 | AIR FILTER (B) | ABS | 208283G03 | 1 | 1 | 1 | 1 | 1 |
| 18 | BUSHING | SR-30-1 | 420472-03 | 1 | 1 | 1 | 1 | 1 |
| 19 | WIRE SADDLE | VWS4238-C | 4A0338-02 | 2 | 2 | 2 | 2 | 2 |
| 20 | THUMBSCREW | SS, ABS | 415949G04 | 2 | 2 | 2 | 2 | 2 |
| 21 | LOUVER (C) | ABS | 103122-03 | 1 | 1 | 1 | 1 | 1 |
| 22 | AIR FILTER (C) | ABS | 208284G01 | 1 | 1 | 1 | 1 | 1 |
| 23 | GASKET | L=655 | 4A0808L02 | 2 | 2 | 2 | 2 | 2 |
| 24 | GASKET | L=190 | 4A0808L02 | 1 | 1 | 1 | 1 | 1 |
| 25 | THERMOSTAT EXTENSION BRACKET | - | 4A1722-01 | | | | 1 | 1 |
| | | | | | | | | |
| | | | | | | | | |
| | | | | | | | | |
| | | | | | | | | |
| | | | | | | | | |
| | | | | | | | | |
| | | | | | | | | |
| | | | | | | | | |
| | | | | | | | | |





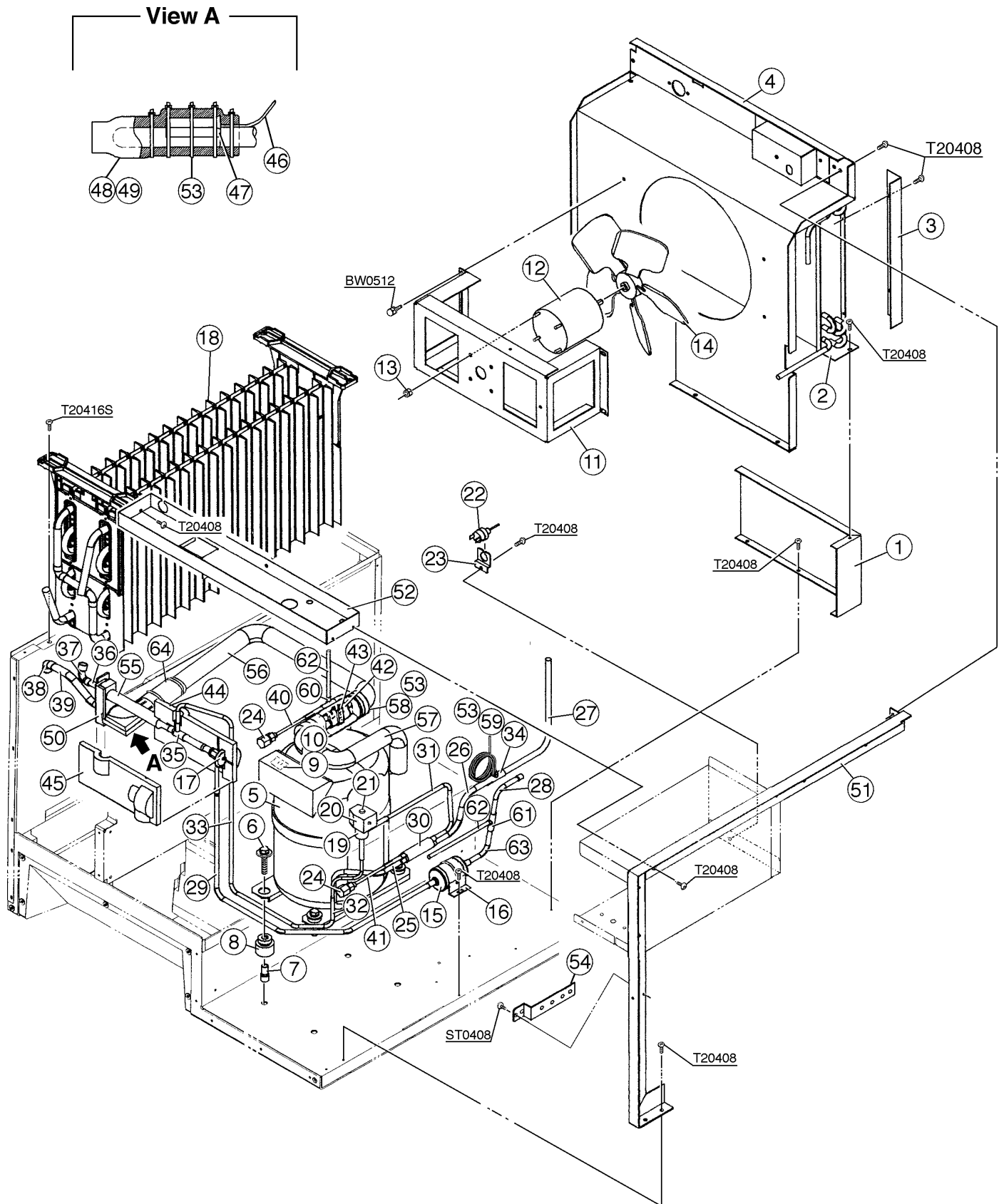


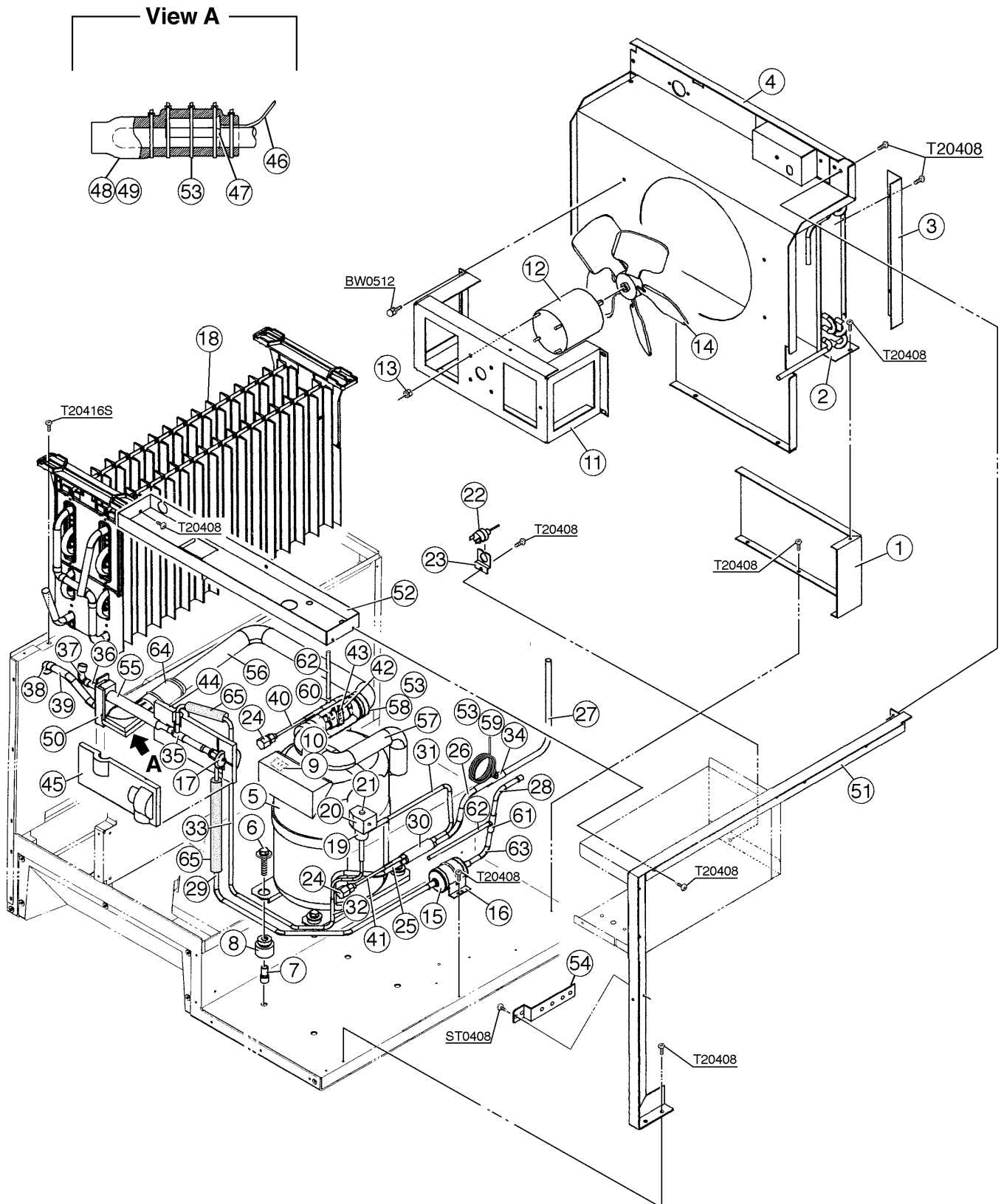
HA

| MODEL: KML-400MWE TITLE: A. ICE CUBER ASSEMBLY | | | | | | | | |
|--|-----------------------|--------------------------|-------------|-----------------|-----|-----|----------------------------|----------|
| INDEX NO. | DESCRIPTION | MATERIAL OR MODEL NUMBER | PART NUMBER | REQUIRED NUMBER | | | | |
| | | | | G-0 H-1 | H-2 | H-3 | H-4 J00466M- J00615B | J00616C- |
| B | REFRIGERATION CIRCUIT | - | 2A0719A01 | 1 | 1 | 1 | - | |
| | | - | 1A0387A01 | | | | 1 | 1 |
| C | WATER CIRCUIT | - | 2A0692A01 | 1 | 1 | - | | |
| | | - | 2A0692A02 | | | 1 | 1 | - |
| | | - | 1A0438A01 | | | | | 1 |
| D | CONTROL BOX ASSEMBLY | - | 2A0657A02 | 1 | - | | | |
| | | - | 2A0657A06 | | 1 | 1 | 1 | 1 |
| | T2 SCREW | 4X8 | 7P31-0408 | 3 | 3 | 3 | 3 | 3 |
| E | LABEL LOCATION | - | 3A0677A01 | 1 | - | | | |
| | | - | 3A0677A02 | | 1 | 1 | 1 | - |
| | | - | 3A1373A01 | | | | | 1 |
| F | TOP PANEL ASSEMBLY | - | 3A0674A01 | 1 | 1 | 1 | 1 | 1 |
| G | FRONT PANEL ASSEMBLY | - | 3A0905A01 | 1 | 1 | 1 | 1 | - |
| | | - | 3A1273A01 | | | | | 1 |
| | TRUSS HEAD SCREW | 4X8, SS | 7C32-0408 | 2 | 2 | 2 | 2 | 1 |
| 1 | EVAPORATOR CASE | - | 2A0687G01 | 1 | 1 | 1 | 1 | 1 |
| 2 | CONTROL BOX COVER | GS | 3A0594-01 | 1 | 1 | 1 | 1 | 1 |
| | T2 SCREW | 4X8 | 7C31-0408 | 3 | 3 | 3 | 3 | 3 |
| 3 | SQUARE WASHER | BRASS | 433537-02 | 1 | 1 | 1 | 1 | 1 |
| 4 | SCREW - GROUNDING | BRASS | 433304-02 | 1 | 1 | 1 | 1 | 1 |
| 5 | JUNCTION BOX COVER | GS | 433410-01 | 1 | 1 | 1 | 1 | 1 |
| 6 | BULB HOLDER | PE | 328919-01 | 1 | 1 | 1 | - | |
| 7 | SPACER | PE | 443545-01 | 1 | 1 | 1 | 1 | 1 |
| 8 | THUMBSCREW | SS, ABS | 415949G03 | 2 | 2 | 2 | 2 | 2 |
| 9 | BIN CONTROL COVER | GS | 3A0664G01 | 1 | 1 | 1 | 1 | 1 |
| 10 | CAPILLARY RING | EP RUBBER | 425307-01 | 1 | 1 | 1 | 2 | 2 |
| 11 | TOP INSULATION | PP | 215730G01 | 1 | 1 | 1 | 1 | 1 |

HA

| MODEL: KML-400MWE TITLE: A. ICE CUBER ASSEMBLY | | | | | | | | |
|--|------------------------------|--------------------------|---------------------------|-----------------|-----|-----|----------------------------|----------|
| INDEX NO. | DESCRIPTION | MATERIAL OR MODEL NUMBER | PART NUMBER | REQUIRED NUMBER | | | | |
| | | | | G-0 H-1 | H-2 | H-3 | H-4 J00466M- J00615B | J00616C- |
| 12 | FRONT INSULATION | PP | 2A0664G01 | 1 | 1 | 1 | 1 | 1 |
| 13 | SIDE PANEL (R) | SS | 2A0649G01 | 1 | 1 | 1 | 1 | - |
| | | SS | 2A1456G01 | | | | | 1 |
| | T2 SCREW | 4X8, SS | 7P32-0408 | 1 | 1 | 1 | | |
| 14 | COVER - MANUAL FILL | ABS, POLYOLEFIN | 4A1015G01 | 1 | 1 | 1 | 1 | - |
| | TRUSS HEAD SCREW | 4X12,SS | 7C32-0412 | 3 | 3 | 3 | 3 | 3 |
| 15 | LOUVER (B) | ABS | 103121-05 | 1 | 1 | 1 | 1 | 1 |
| 16 | TAPPING SCREW (BLACK) | STEEL, 4X8 | 433954-01 | 2 | 2 | 2 | 2 | 2 |
| 17 | BUSHING | SR-30-1 | 420472-03 | 1 | 1 | 1 | 1 | 1 |
| 18 | WIRE SADDLE | VWS4238-C | 4A0338-02 | 2 | 2 | 2 | 2 | 2 |
| 19 | THUMBSCREW | SS, ABS | 415949G04 | 2 | 2 | 2 | 2 | 2 |
| 20 | LOUVER (C) | ABS | 103122-03 | 1 | 1 | 1 | 1 | 1 |
| 21 | GASKET | L=655 | 4A0808L02 | 2 | 2 | 2 | 2 | 2 |
| 22 | GASKET | L=190 | 4A0808L02 | 1 | 1 | 1 | 1 | 1 |
| 23 | THERMOSTAT BRACKET EXTENSION | - | 4A1722-01 | | | | 1 | 1 |
| | | | | | | | | |
| | | | | | | | | |
| | | | | | | | | |
| | | | | | | | | |
| | | | | | | | | |
| | | | | | | | | |
| | | | | | | | | |
| | | | | | | | | |
| | | | | | | | | |
| | | | | | | | | |
| | | | | | | | | |
| | | | | | | | | |
| | | | | | | | | |
| | | | | | | | | |





HA

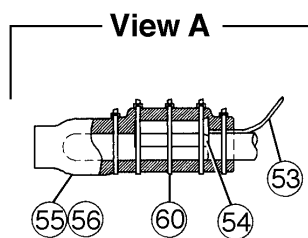
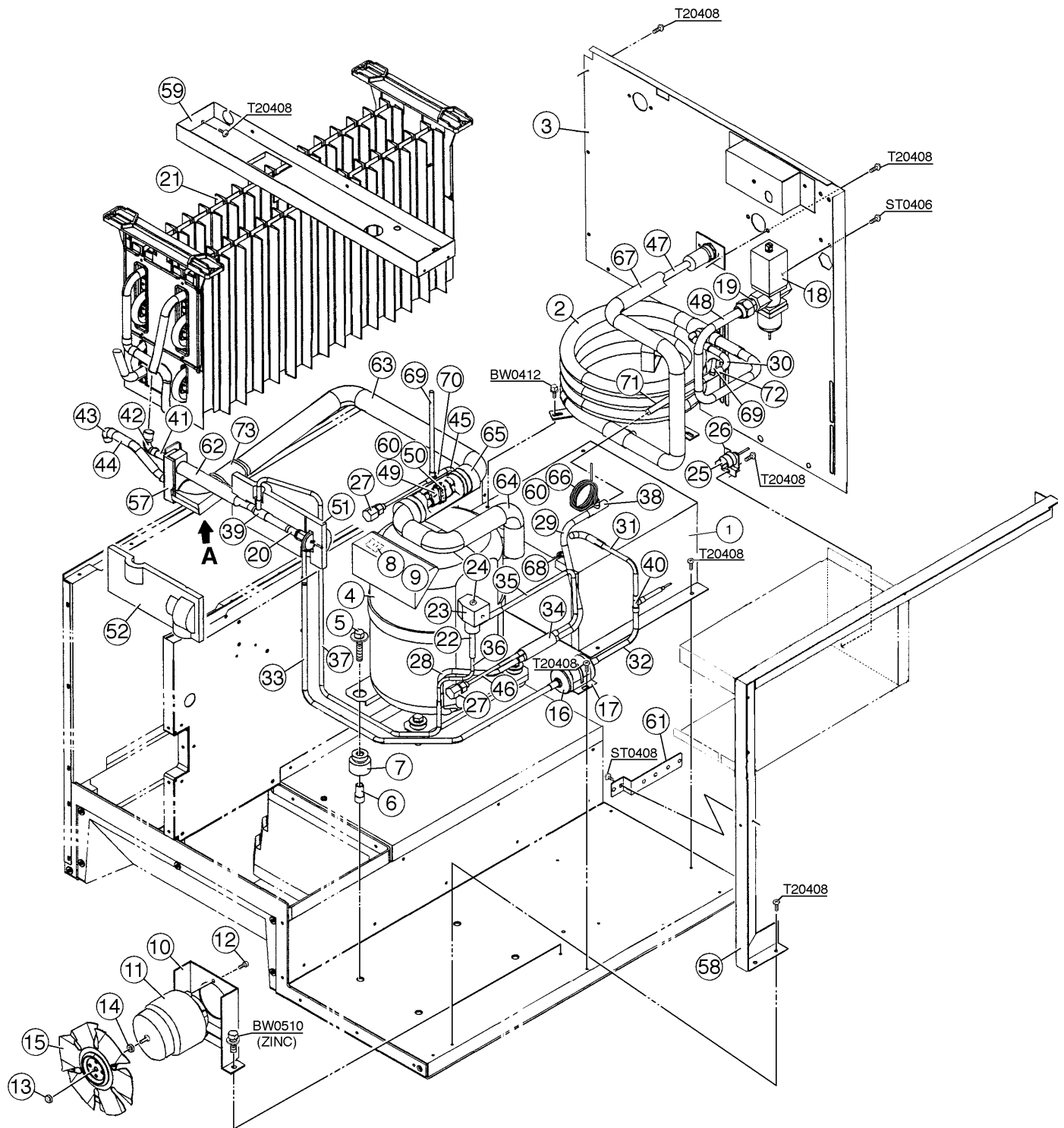
| MODEL: KML-400MAE TITLE: B. REFRIGERATION CIRCUIT | | | | | | | | |
|---|-----------------------------|--------------------------|-------------|-----------------|-----|------------|-----|-----|
| INDEX NO. | DESCRIPTION | MATERIAL OR MODEL NUMBER | PART NUMBER | REQUIRED NUMBER | | | | |
| | | | | G-0 | H-0 | H-1 H-2 | H-3 | J-0 |
| 1 | CONDENSER SUPPORT | GS | 3A0589-01 | 1 | 1 | 1 | 1 | 1 |
| | T2 SCREW | 4X8 | 7P31-0408 | 5 | 5 | 5 | 5 | 5 |
| 2 | CONDENSER | S-0799 | 2A0640-01 | 1 | 1 | 1 | 1 | 1 |
| | T2 SCREW | 4X8 | 7P31-0408 | 3 | 3 | 3 | 3 | 3 |
| 3 | BARRIER | GS | 4A0932-01 | 1 | 1 | 1 | 1 | 1 |
| | T2 SCREW | 4X8 | 7P31-0408 | 2 | 2 | 2 | 2 | 2 |
| 4 | SHROUD | GS | 3A0597G01 | 1 | 1 | 1 | 1 | 1 |
| | T2 SCREW | 4X8 | 7P31-0408 | 5 | 5 | 5 | 5 | 5 |
| 5 | COMPRESSOR | RSN6-0075-CAA | 446521-01 | 1 | 1 | 1 | 1 | 1 |
| 6 | BOLT | 8 x 45 | 437889-01 | 4 | 4 | 4 | 4 | 4 |
| 7 | SPACER | 027-0072-02 | 434404-01 | 4 | 4 | 4 | 4 | 4 |
| 8 | GROMMET | 527-0039-04 | 434403-01 | 4 | 4 | 4 | 4 | 4 |
| 9 | MOTOR PROTECTOR | 071-0127-42 | 446569-01 | 1 | 1 | 1 | 1 | 1 |
| 10 | PROTECTOR HOLDER | SS | 437379-01 | 1 | 1 | 1 | - | |
| | | SS | 4A1248-01 | | | | 1 | 1 |
| 11 | FAN MOTOR BRACKET | GS | 2A0181-01 | 1 | 1 | 1 | 1 | 1 |
| | HEX HEAD BOLT W/WASHER (LF) | 5X12 | 7B0130512 | 4 | 4 | 4 | 4 | 4 |
| 12 | FAN MOTOR | U90B1, 7190-1031 | 440911-01 | 1 | 1 | 1 | 1 | 1 |
| 13 | SELF-LOCKING NUT | SS | 7N2110832 | 4 | 4 | 4 | 4 | 4 |
| 14 | FAN BLADE | AD10CW32 | 444898-01 | 1 | 1 | 1 | 1 | 1 |
| 15 | DRIER | C-0325-S | 445007-01 | 1 | 1 | 1 | 1 | 1 |
| 16 | DRIER BRACKET | GS | 4A0807-01 | 1 | 1 | 1 | 1 | 1 |
| | T2 SCREW | 4X8 | 7P31-0408 | 2 | 2 | 2 | 2 | 2 |
| 17 | EXPANSION VALVE | HFE-10HHD-2 | 443305-02 | 1 | 1 | 1 | 1 | 1 |
| 18 | EVAPORATOR ASSEMBLY | - | 2A0717G01 | 1 | 1 | 1 | 1 | 1 |
| | T2 SCREW | 4X16, SS | 7P32-0416 | 4 | 4 | 4 | 4 | 4 |
| 19 | VALVE BODY | 70 | 440352-01 | 1 | 1 | 1 | 1 | 1 |
| 20 | COIL - VALVE | ABS-25-1-HD-2 | 440354-01 | 1 | 1 | 1 | 1 | 1 |
| 21 | BOLT | - | 440354F01 | 1 | 1 | 1 | 1 | 1 |

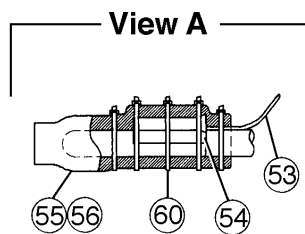
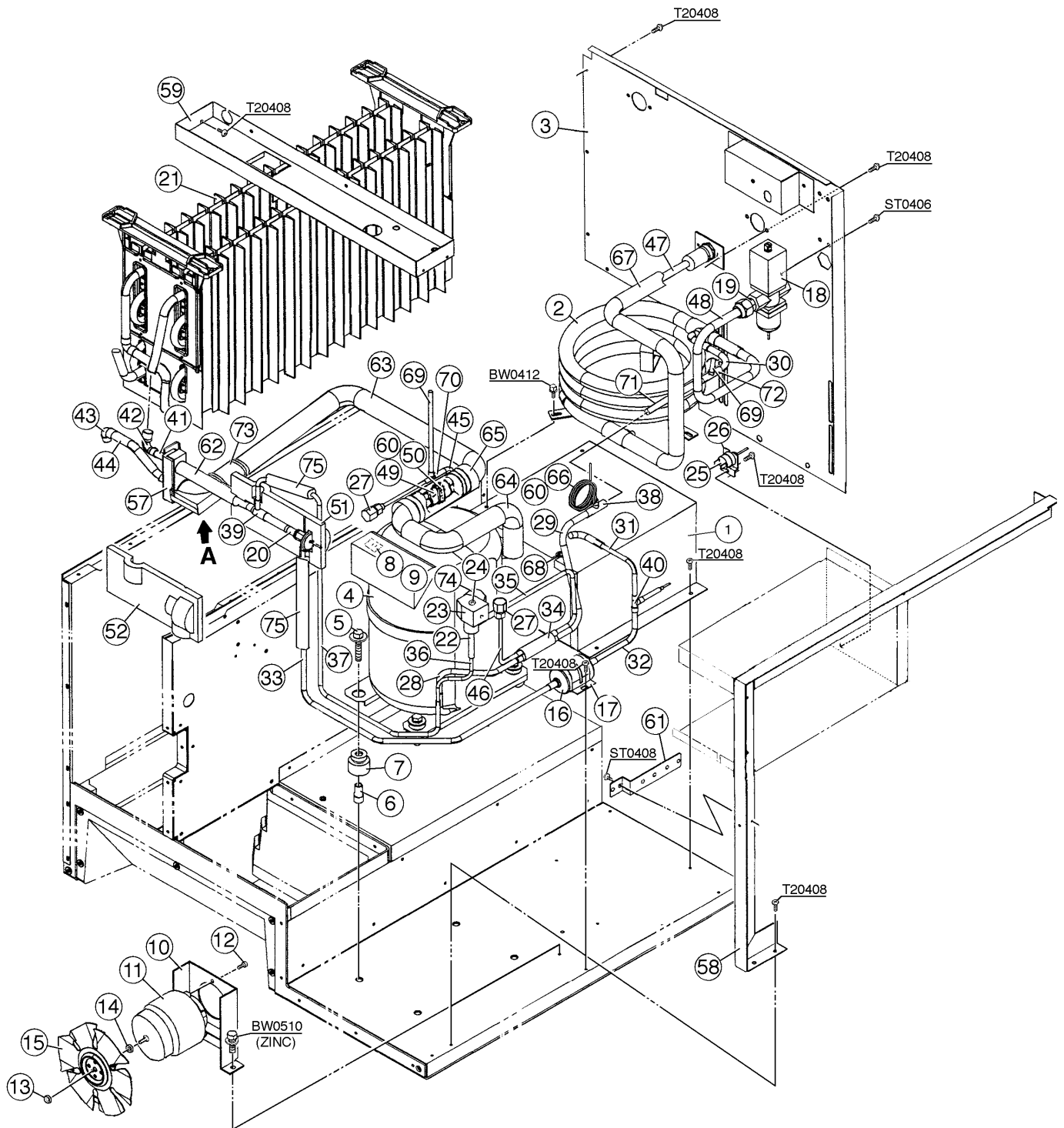
HA

| MODEL: KML-400MAE TITLE: B. REFRIGERATION CIRCUIT | | | | | | | | |
|---|--------------------------------|--------------------------|---------------------------|-----------------|-----|------------|-----|-----|
| INDEX NO. | DESCRIPTION | MATERIAL OR MODEL NUMBER | PART NUMBER | REQUIRED NUMBER | | | | |
| | | | | G-0 | H-0 | H-1 H-2 | H-3 | J-0 |
| 22 | PRESSURE SWITCH | ACB-2UB04 | 433441-05 | 1 | 1 | 1 | 1 | 1 |
| 23 | PRESSURE SWITCH BRACKET | GS | 434938-01 | 1 | 1 | 1 | 1 | 1 |
| | T2 SCREW | 4X8 | 7P31-0408 | 1 | 1 | 1 | 1 | 1 |
| 24 | ACCESS VALVE | TCJ-2F15-HD | 417366-01 | 2 | 2 | 2 | 2 | 2 |
| 25 | COPPER TUBE (A) - HIGH SIDE | COPPER | 4A0986-01 | 1 | 1 | 1 | x1 | |
| | COPPER TUBE (A1) - HIGH SIDE | COPPER | 4A0986-01 | | | | o1 | 1 |
| 26 | COPPER TUBE (B) - HIGH SIDE | COPPER | 4A0987-01 | 1 | 1 | 1 | 1 | 1 |
| 27 | COPPER TUBE (C) - HIGH SIDE | COPPER | 4A0989-01 | 1 | 1 | 1 | 1 | 1 |
| 28 | COPPER TUBE (D) - HIGH SIDE | COPPER | 4A0991-01 | 1 | 1 | 1 | 1 | 1 |
| 29 | COPPER TUBE (E) - HIGH SIDE | COPPER | 3A0628-01 | 1 | 1 | 1 | 1 | 1 |
| 30 | STRAINER | - | 4A0397-01 | 1 | 1 | 1 | 1 | 1 |
| 31 | COPPER TUBE (A) - HOT GAS | COPPER | 4A0994-01 | 1 | 1 | 1 | 1 | 1 |
| 32 | COPPER TUBE (B) - HOT GAS | COPPER | 4A0995-01 | 1 | 1 | 1 | 1 | 1 |
| 33 | COPPER TUBE (C) - HOT GAS | COPPER | 2A0679-01 | 1 | 1 | 1 | 1 | 1 |
| 34 | TEE | COPPER | 431618-01 | 1 | 1 | 1 | 1 | 1 |
| 35 | TEE | COPPER | 436000-08 | 1 | 1 | 1 | 1 | 1 |
| 36 | COPPER TUBE (A) - LOW SIDE | COPPER | 4A0993-01 | 1 | 1 | 1 | 1 | 1 |
| 37 | ELBOW | COPPER | 4A1059-01 | 1 | 1 | 1 | 1 | 1 |
| 38 | ELBOW | COPPER | 417395-03 | 1 | 1 | 1 | 1 | 1 |
| 39 | COPPER TUBE - LOW SIDE | COPPER | 2A0682-01 | 1 | 1 | 1 | 1 | 1 |
| 40 | COPPER TUBE (A) - ACCESS VALVE | COPPER | 4A1009-01 | 1 | 1 | 1 | 1 | 1 |
| 41 | COPPER TUBE (B) - ACCESS VALVE | COPPER | 4A1010-01 | 1 | 1 | 1 | 1 | 1 |
| 42 | HOLDER / EXPANSION VALVE - 3/8 | SS | 3A0107-01 | 1 | 1 | 1 | 1 | 1 |
| 43 | CLAMP | SS | 443461-02 | 1 | 1 | 1 | 1 | 1 |
| 44 | EXPANSION VALVE COVER (A) | PE FOAM | 322621-01 | 1 | 1 | 1 | 1 | 1 |
| 45 | EXPANSION VALVE COVER (B) | PE FOAM | 322621-02 | 1 | 1 | 1 | 1 | 1 |
| 46 | THERMISTOR | - | 429006-03 | 1 | 1 | 1 | 1 | 1 |
| 47 | HOLDER - THERMISTOR | COPPER | 427430-01 | 1 | 1 | 1 | 1 | 1 |
| 48 | INSULATION - THERMISTOR (A) | PE FOAM | 439368-01 | 1 | 1 | 1 | 1 | 1 |
| 49 | INSULATION - THERMISTOR (B) | PE FOAM | 439368-02 | 1 | 1 | 1 | 1 | 1 |

HA

| MODEL: KML-400MAE TITLE: B. REFRIGERATION CIRCUIT | | | | | | | | |
|---|------------------------------|--------------------------|---------------------------|-----------------|-----|------------|-----|-----|
| INDEX NO. | DESCRIPTION | MATERIAL OR MODEL NUMBER | PART NUMBER | REQUIRED NUMBER | | | | |
| | | | | G-0 | H-0 | H-1 H-2 | H-3 | J-0 |
| 50 | INSULATED RUBBER TUBE | EPDM | 4A1008G01 | 1 | 1 | 1 | 1 | 1 |
| 51 | FRAME (A) | GS | 2A0645-01 | 1 | 1 | 1 | 1 | 1 |
| | T2 SCREW | 4X8 | 7P31-0408 | 4 | 4 | 4 | 4 | 4 |
| 52 | FRAME (B) | GS | 3A0595-01 | 1 | 1 | 1 | 1 | 1 |
| | T2 SCREW | 4X8 | 7P31-0408 | 4 | 4 | 4 | 4 | 4 |
| 53 | CABLE TIE | CV-200 | 7920-0010 | 14 | 14 | 14 | 14 | 14 |
| 54 | LINE VALVE BRACKET | GS | 438213-01 | 1 | 1 | 1 | 1 | 1 |
| 55 | INSULATION TUBE | L=110 | 7762-1030 | 1 | 1 | 1 | x1 | |
| | | L=120 | 7762-1030 | | | | o1 | x1 |
| | | L=140 | 7762-1030 | | | | | o1 |
| 56 | INSULATION TUBE | L=580 | 7762-1330 | 1 | 1 | 1 | 1 | 1 |
| 57 | INSULATION TUBE | L=330 | 7762-1330 | 1 | 1 | 1 | 1 | 1 |
| 58 | INSULATION TUBE | L=140 | 7762-2943 | 1 | 1 | 1 | 1 | 1 |
| 59 | INSULATION TUBE | L=30 | 7762-1020 | 2 | 2 | 2 | 2 | 2 |
| 60 | TEE | COPPER | 436000-13 | 1 | 1 | 1 | 1 | 1 |
| 61 | TEE | COPPER | 420041-02 | 1 | 1 | 1 | 1 | 1 |
| 62 | EVACUATION TUBE | COPPER | 4A1212-01 | 2 | 2 | 2 | 2 | 2 |
| 63 | COPPER TUBE (D2) - HIGH SIDE | COPPER | 4A1213-01 | 1 | 1 | 1 | 1 | 1 |
| 64 | INSULATION TUBE | L=60 | 7762-2943 | 1 | 1 | 1 | 1 | 1 |
| 65 | INSULATION TUBE | L=100 | 7762-1020 | | | | 2 | 2 |
| | | | | | | | | |
| | | | | | | | | |
| | | | | | | | | |
| | | | | | | | | |
| | | | | | | | | |
| | | | | | | | | |
| | | | | | | | | |
| | | | | | | | | |
| | | | | | | | | |





HA

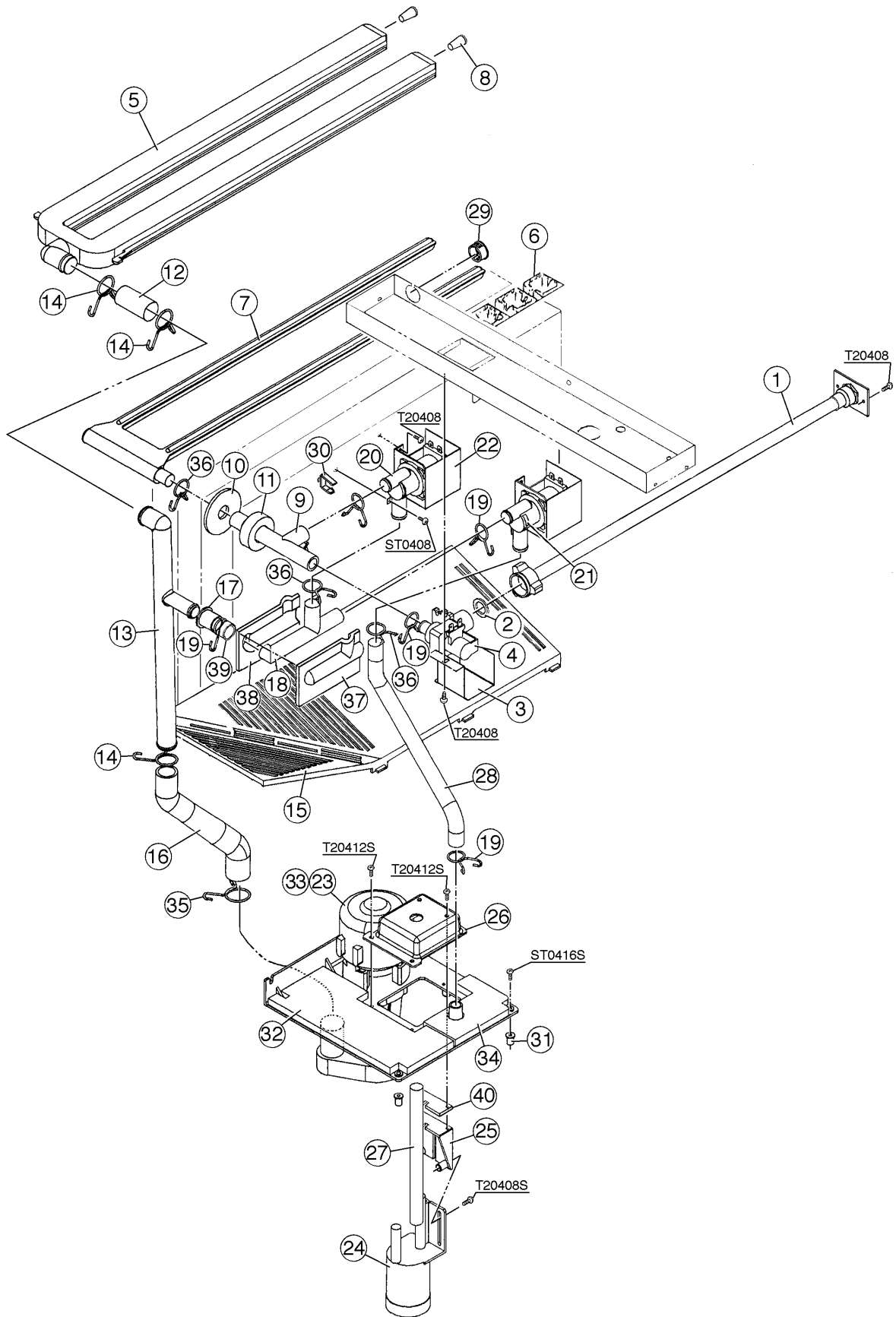
| MODEL: KML-400MWE TITLE: B. REFRIGERATION CIRCUIT | | | | | | | | |
|---|-----------------------------|--------------------------|---------------------------|-----------------|-----|-----|-----|------------|
| INDEX NO. | DESCRIPTION | MATERIAL OR MODEL NUMBER | PART NUMBER | REQUIRED NUMBER | | | | |
| | | | | G-0 | H-1 | H-2 | H-3 | H-4 J-0 |
| 1 | CONDENSER SUPPORT | GS | 2A0655-01 | 1 | 1 | 1 | 1 | 1 |
| | T2 SCREW | 4X8 | 7P31-0408 | 4 | 4 | 4 | 4 | 4 |
| 2 | CONDENSER - WATER COOLED | - | 215544G02 | 1 | 1 | 1 | 1 | 1 |
| | HEX HEAD BOLT W/WASHER (LF) | 4X12 | 7B0130412 | 3 | 3 | 3 | 3 | 3 |
| 3 | REAR PANEL (B) | GS | 3A0630G01 | 1 | 1 | 1 | 1 | 1 |
| | T2 SCREW | 4X8 | 7P31-0408 | 9 | 9 | 9 | 9 | 9 |
| 4 | COMPRESSOR | RSN6-0075-CAA | 446521-01 | 1 | 1 | 1 | 1 | 1 |
| 5 | BOLT | 8 x 45 | 437889-01 | 4 | 4 | 4 | 4 | 4 |
| 6 | SPACER | 027-0072-02 | 434404-01 | 4 | 4 | 4 | 4 | 4 |
| 7 | GROMMET | 527-0039-04 | 434403-01 | 4 | 4 | 4 | 4 | 4 |
| 8 | MOTOR PROTECTOR | 071-0127-42 | 446569-01 | 1 | 1 | 1 | 1 | 1 |
| 9 | PROTECTOR HOLDER | SS | 437379-01 | 1 | 1 | 1 | 1 | - |
| | | SS | 4A1248-01 | | | | | 1 |
| 10 | FAN MOTOR BRACKET | GS | 3A0171-01 | 1 | x1 | | | |
| | | GS | 3A0171-02 | | o1 | 1 | 1 | 1 |
| | BOLT & WASHER ASSEMBLY | 5X10 | | 2 | 2 | 2 | 2 | 2 |
| 11 | FAN MOTOR | SPB4ERI | 440916-01 | 1 | 1 | 1 | 1 | 1 |
| 12 | SCREW | 122A556AC | 436863-01 | 3 | 3 | 3 | 3 | 3 |
| 13 | NUT | STEEL | 435982-01 | 1 | 1 | 1 | 1 | 1 |
| 14 | WASHER | - | 435983-01 | 1 | 1 | 1 | 1 | 1 |
| 15 | FAN BLADE | AL | 435481-01 | 1 | 1 | 1 | 1 | 1 |
| 16 | DRIER | C-0325-S | 445007-01 | 1 | 1 | 1 | 1 | 1 |
| 17 | DRIER BRACKET | GS | 4A0807-01 | 1 | 1 | 1 | 1 | 1 |
| 18 | WATER REGULATOR | - | 4A0911-01 | 1 | 1 | 1 | 1 | 1 |
| | TRUSS HEAD SCREW | 4X6 | 7C31-0406 | 2 | 2 | 2 | 2 | 2 |
| 19 | MALE CONNECTOR | BRASS | 4A1087-01 | 1 | 1 | 1 | 1 | 1 |
| 20 | EXPANSION VALVE | HFE-10HHD-2 | 443305-02 | 1 | 1 | 1 | 1 | 1 |
| 21 | EVAPORATOR ASSEMBLY | - | 2A0717G01 | 1 | 1 | 1 | 1 | 1 |
| | T2 SCREW | 4X16, SS | 7P32-0416 | 4 | 4 | 4 | 4 | 4 |
| 22 | VALVE BODY | 70 | 440352-01 | 1 | 1 | 1 | 1 | 1 |

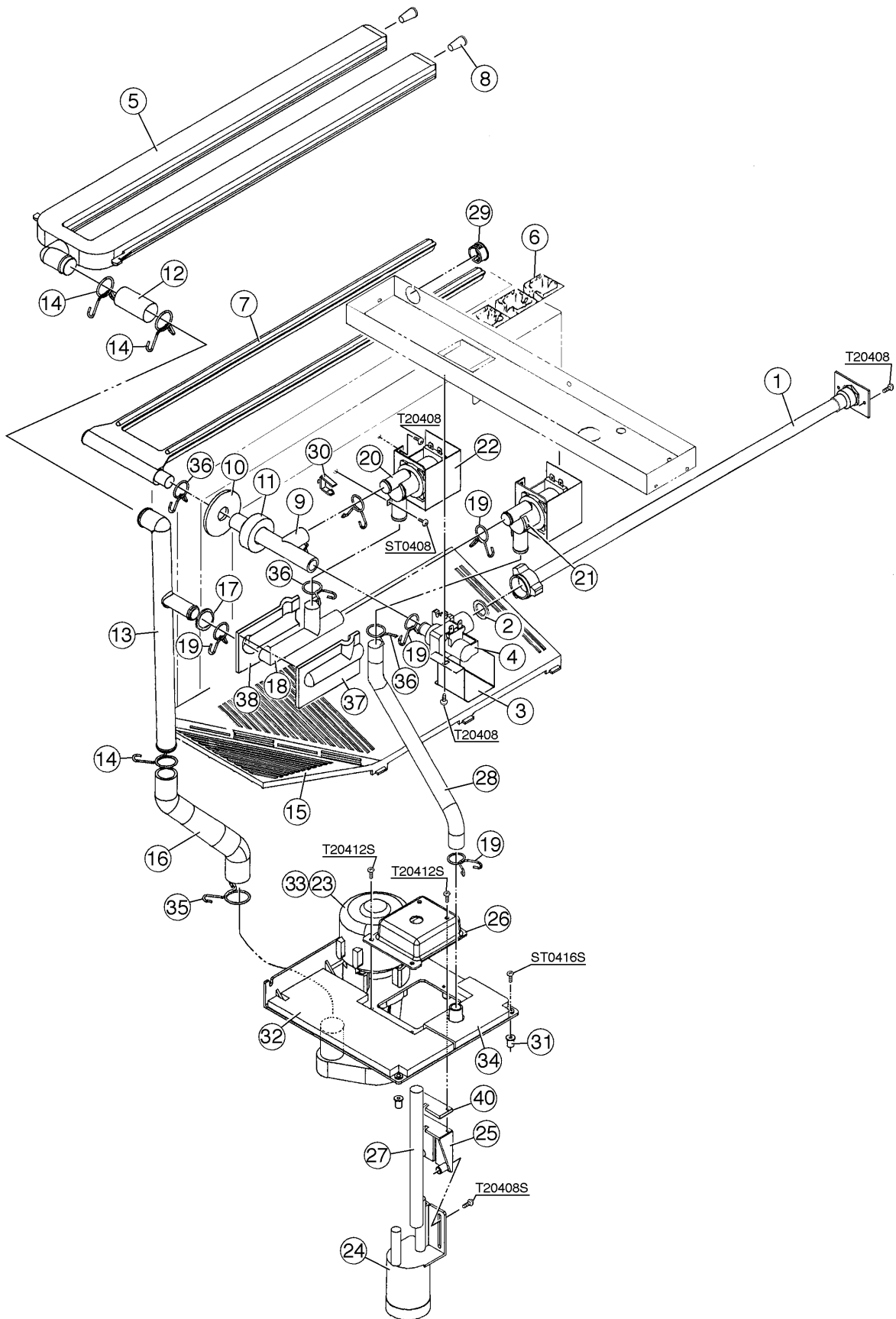
| MODEL: KML-400MWE TITLE: B. REFRIGERATION CIRCUIT | | | | | | | | |
|---|--------------------------------|--------------------------|-------------|-----------------|-----|-----|-----|------------|
| INDEX NO. | DESCRIPTION | MATERIAL OR MODEL NUMBER | PART NUMBER | REQUIRED NUMBER | | | | |
| | | | | G-0 | H-1 | H-2 | H-3 | H-4 J-0 |
| 23 | COIL - VALVE | ABS-25-1-HD-2 | 440354-01 | 1 | 1 | 1 | 1 | 1 |
| 24 | BOLT | - | 440354F01 | 1 | 1 | 1 | 1 | 1 |
| | TRUSS HEAD SCREW | 4X8 | 7C310408 | 2 | 2 | 2 | 2 | 2 |
| 25 | PRESSURE SWITCH | ACB-2UB02 | 433441-01 | 1 | 1 | 1 | 1 | 1 |
| 26 | PRESSURE SWITCH BRCKT. | GS | 434938-01 | 1 | 1 | 1 | 1 | 1 |
| | T2 SCREW | 4X8 | 7P32-0408 | 1 | 1 | 1 | 1 | 1 |
| 27 | ACCESS VALVE | TCJ-2F15-HD | 417366-01 | 2 | 2 | 2 | 2 | 2 |
| 28 | COPPER TUBE (A) - HIGH SIDE | COPPER | 4A0986-01 | 1 | 1 | 1 | 1 | - |
| | | COPPER | 4A0986G01 | | | | | 1 |
| 29 | COPPER TUBE (B) - HIGH SIDE | COPPER | 4A0988-01 | 1 | 1 | 1 | 1 | 1 |
| 30 | COPPER TUBE (C) - HIGH SIDE | COPPER | 4A0990-01 | 1 | 1 | 1 | 1 | 1 |
| 31 | COPPER TUBE (D1) - HIGH SIDE | COPPER | 4A1000-01 | 1 | 1 | 1 | 1 | 1 |
| 32 | COPPER TUBE (D2) - HIGH SIDE | COPPER | 4A0992-01 | 1 | 1 | 1 | 1 | 1 |
| 33 | COPPER TUBE (E) - HIGH SIDE | COPPER | 3A0628-01 | 1 | 1 | 1 | 1 | 1 |
| 34 | STRAINER | - | 4A0397-01 | 1 | 1 | 1 | 1 | 1 |
| 35 | COPPER TUBE (A) - HOT GAS | COPPER | 4A0994-01 | 1 | 1 | 1 | 1 | 1 |
| 36 | COPPER TUBE (B) - HOT GAS | COPPER | 4A0995-01 | 1 | 1 | 1 | 1 | 1 |
| 37 | COPPER TUBE (C) - HOT GAS | COPPER | 2A0679-01 | 1 | 1 | 1 | 1 | 1 |
| 38 | TEE | COPPER | 431618-01 | 1 | 1 | 1 | 1 | 1 |
| 39 | TEE | COPPER | 436000-08 | 1 | 1 | 1 | 1 | 1 |
| 40 | TEE | COPPER | 436000-05 | 1 | 1 | 1 | 1 | 1 |
| 41 | COPPER TUBE (A) - LOW SIDE | COPPER | 4A0993-01 | 1 | 1 | 1 | 1 | 1 |
| 42 | ELBOW | COPPER | 4A1059-01 | 1 | 1 | 1 | 1 | 1 |
| 43 | ELBOW | COPPER | 417395-03 | 1 | 1 | 1 | 1 | 1 |
| 44 | COPPER TUBE - LOW SIDE | COPPER | 2A0682-01 | 1 | 1 | 1 | 1 | 1 |
| 45 | COPPER TUBE (A) - ACCESS VALVE | COPPER | 4A1009-01 | 1 | 1 | 1 | 1 | 1 |
| 46 | COPPER TUBE (B) - ACCESS VALVE | COPPER | 4A1010-01 | 1 | 1 | 1 | 1 | - |
| | | COPPER | 4A1800-01 | | | | | 1 |
| 47 | COPPER TUBE (A) | COPPER | 3A0626G01 | 1 | 1 | 1 | 1 | 1 |
| | T2 SCREW | 4X8 | 7P31-0408 | 1 | 1 | 1 | 1 | 1 |

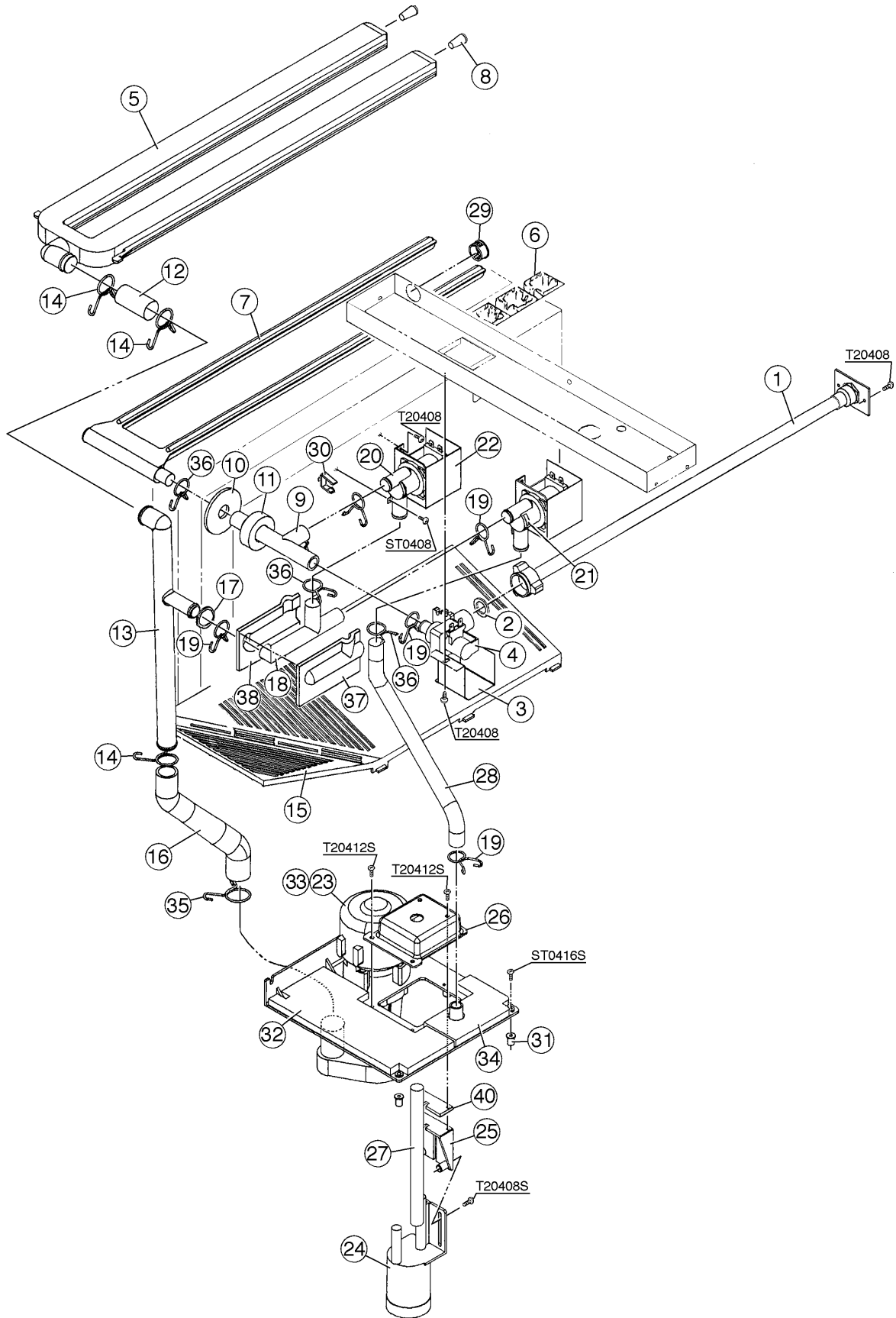
| MODEL: KML-400MWE TITLE: B. REFRIGERATION CIRCUIT | | | | | | | | |
|---|--------------------------------|--------------------------|---------------------------|-----------------|-----|-----|-----|------------|
| INDEX NO. | DESCRIPTION | MATERIAL OR MODEL NUMBER | PART NUMBER | REQUIRED NUMBER | | | | |
| | | | | G-0 | H-1 | H-2 | H-3 | H-4 J-0 |
| 48 | COPPER TUBE (B) | COPPER | 3A0627G01 | 1 | 1 | 1 | 1 | 1 |
| 49 | HOLDER / EXPANSION VALVE - 3/8 | SS | 3A0107-01 | 1 | 1 | 1 | 1 | 1 |
| 50 | CLAMP | SS | 443461-02 | 1 | 1 | 1 | 1 | 1 |
| 51 | EXPANSION VALVE COVER (A) | PE FOAM | 322621-01 | 1 | 1 | 1 | 1 | 1 |
| 52 | EXPANSION VALVE COVER (B) | PE FOAM | 322621-02 | 1 | 1 | 1 | 1 | 1 |
| 53 | THERMISTOR | - | 429006-03 | 1 | 1 | 1 | 1 | 1 |
| 54 | HOLDER - THERMISTOR | COPPER | 427430-01 | 1 | 1 | 1 | 1 | 1 |
| 55 | INSULATION - THERMISTOR (A) | PE FOAM | 439368-01 | 1 | 1 | 1 | 1 | 1 |
| 56 | INSULATION - THERMISTOR (B) | PE FOAM | 439368-02 | 1 | 1 | 1 | 1 | 1 |
| 57 | INSULATED RUBBER TUBE | EPDM | 4A1008G01 | 1 | 1 | 1 | 1 | 1 |
| 58 | FRAME (A) | GS | 2A0645-01 | 1 | 1 | 1 | 1 | 1 |
| | T2 SCREW | 4X8 | 7P31-0408 | 4 | 4 | 4 | 4 | 4 |
| 59 | FRAME (B) | GS | 3A0595-01 | 1 | 1 | 1 | 1 | 1 |
| | T2 SCREW | 4X8 | 7P31-0408 | 4 | 4 | 4 | 4 | 4 |
| 60 | CABLE TIE | CV-200 | 7920-0010 | 15 | 15 | 15 | 15 | 15 |
| 61 | LINE VALVE BRACKET | GS | 438213-01 | 1 | 1 | 1 | 1 | 1 |
| | T2 SCREW | 4X8 | 7P31-0408 | 2 | 2 | 2 | 2 | 2 |
| 62 | INSULATION TUBE | L=140 | 7762-1030 | 1 | 1 | 1 | 1 | 1 |
| 63 | INSULATION TUBE | L=580 | 7762-1330 | 1 | 1 | 1 | 1 | 1 |
| 64 | INSULATION TUBE | L=330 | 7762-1330 | 1 | 1 | 1 | 1 | 1 |
| 65 | INSULATION TUBE | L=140 | 7762-2943 | 1 | 1 | 1 | 1 | 1 |
| 66 | INSULATION TUBE | L=30 | 7762-1020 | 3 | 3 | 3 | 3 | 3 |
| 67 | INSULATION TUBE | L=670 | 7762-1323 | 1 | 1 | 1 | 1 | 1 |
| 68 | BUSHING | OCB-500 | 428394-02 | 1 | 1 | 1 | 1 | 1 |
| 69 | EVACUATION TUBE | COPPER | 4A1212-01 | 2 | 2 | 2 | 2 | 2 |
| 70 | TEE | COPPER | 436000-13 | 1 | 1 | 1 | 1 | 1 |
| 71 | COPPER TUBE (C1) - HIGH SIDE | COPPER | 4A1334-01 | 1 | 1 | 1 | 1 | 1 |
| 72 | TEE | COPPER | 436000-06 | 1 | 1 | 1 | 1 | 1 |
| 73 | INSULATION TUBE | L=60 | 7762-2943 | 1 | 1 | 1 | 1 | 1 |

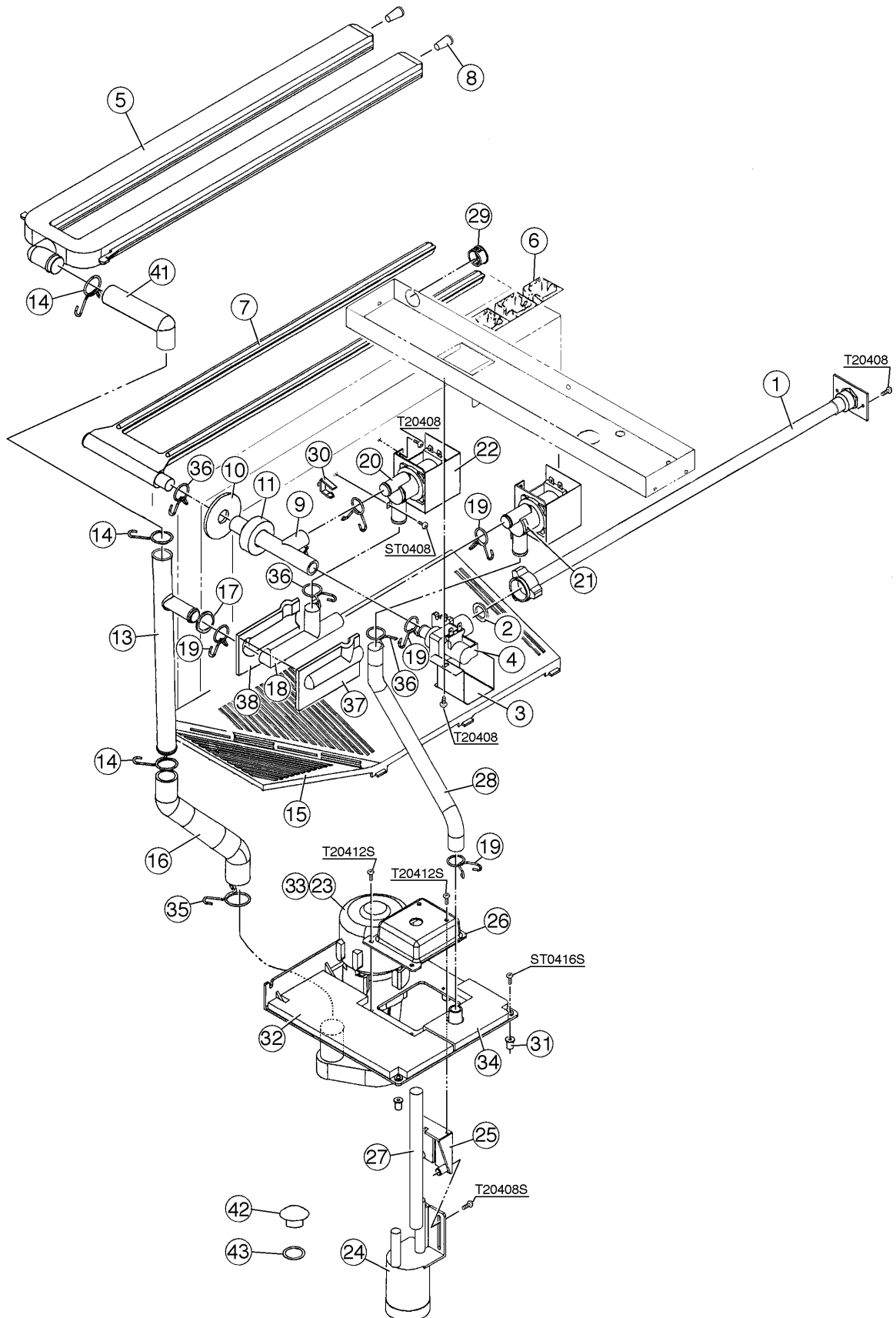
HA

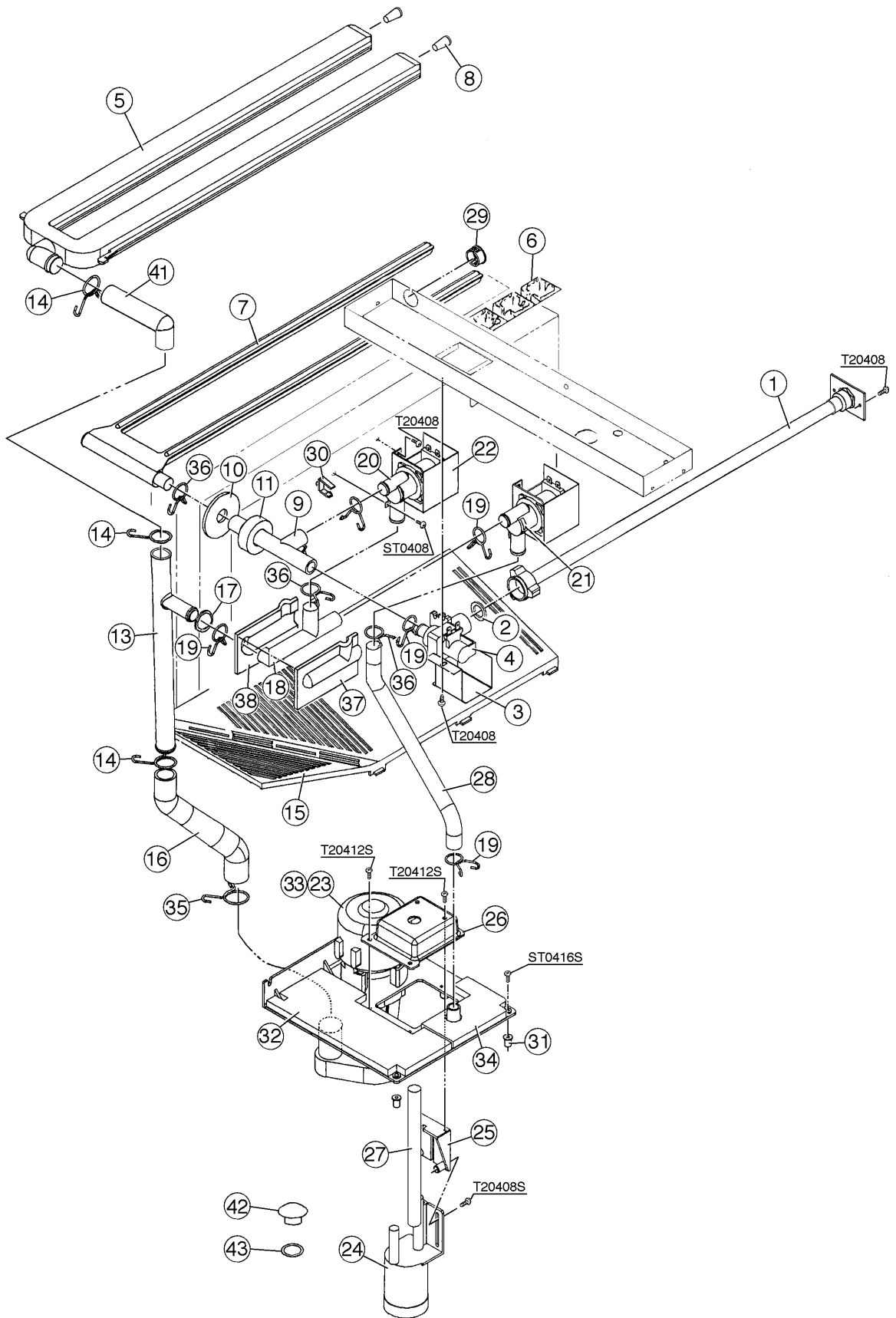
| MODEL: KML-400MWE TITLE: B. REFRIGERATION CIRCUIT | | | | | | | | | |
|---|------------------|--------------------------|-------------|-----------------|-----|-----|-----|---------|---|
| INDEX NO. | DESCRIPTION | MATERIAL OR MODEL NUMBER | PART NUMBER | REQUIRED NUMBER | | | | | |
| | | | | G-0 | H-1 | H-2 | H-3 | H-4 J-0 | |
| 74 | THERMOSTAT | - | 440664-03 | | | | | | 1 |
| | TRUSS HEAD SCREW | 3X6 | 7C31-0306 | | | | | | 2 |
| 75 | INSULATION TUBE | L=100 | 7762-1020 | | | | | | 2 |
| | | | | | | | | | |
| | | | | | | | | | |
| | | | | | | | | | |
| | | | | | | | | | |
| | | | | | | | | | |
| | | | | | | | | | |
| | | | | | | | | | |
| | | | | | | | | | |
| | | | | | | | | | |
| | | | | | | | | | |
| | | | | | | | | | |
| | | | | | | | | | |
| | | | | | | | | | |
| | | | | | | | | | |
| | | | | | | | | | |
| | | | | | | | | | |
| | | | | | | | | | |
| | | | | | | | | | |
| | | | | | | | | | |
| | | | | | | | | | |
| | | | | | | | | | |
| | | | | | | | | | |
| | | | | | | | | | |
| | | | | | | | | | |
| | | | | | | | | | |
| | | | | | | | | | |
| | | | | | | | | | |
| | | | | | | | | | |
| | | | | | | | | | |
| | | | | | | | | | |
| | | | | | | | | | |
| | | | | | | | | | |
| | | | | | | | | | |
| | | | | | | | | | |
| | | | | | | | | | |
| | | | | | | | | | |
| | | | | | | | | | |
| | | | | | | | | | |
| | | | | | | | | | |
| | | | | | | | | | |
| | | | | | | | | | |
| | | | | | | | | | |
| | | | | | | | | | |
| | | | | | | | | | |
| | | | | | | | | | |
| | | | | | | | | | |
| | | | | | | | | | |











HA

| MODEL: KML-400MAE TITLE: C. WATER CIRCUIT | | | | | | | | |
|---|---------------------|--------------------------|-------------|-----------------|-----|-----|----------------------------|----------|
| INDEX NO. | DESCRIPTION | MATERIAL OR MODEL NUMBER | PART NUMBER | REQUIRED NUMBER | | | | |
| | | | | G-0 H-0 | H-1 | H-2 | H-3 J02385M- J02784B | J02785C- |
| 1 | WATER SUPPLY PIPE | COPPER | 4A0768G01 | 1 | 1 | 1 | 1 | x1 |
| | | COPPER | 4A0768G04 | | | | | o1 |
| | T2 SCREW | 4X8 | 7P310408 | 2 | 2 | 2 | 2 | 2 |
| 2 | RUBBER GASKET | NR | 413854-03 | 1 | 1 | 1 | 1 | 1 |
| 3 | WATER VALVE BRACKET | GS | 321443-01 | 1 | 1 | 1 | 1 | 1 |
| | | T2 SCREW | 4X8 | 7P310408 | 1 | 1 | 1 | 1 |
| 4 | WATER VALVE | J248-033 | 3U0111-03 | 1 | 1 | - | | |
| | | J248-072 | 3U0111-04 | | | 1 | 1 | 1 |
| 5 | SPRAY TUBE | PE | 1A0019-02 | 1 | 1 | x1 | | |
| | | PE | 1A0260-02 | 1 | 1 | o1 | 1 | 1 |
| 6 | SPRAY GUIDE (A) | PE | 208586-01 | 6 | 6 | x6 | | |
| | | - | 1A0260-02 | | | o6 | 6 | 6 |
| 7 | WATER SUPPLY TUBE | PE | 2A0079-01 | 1 | 1 | 1 | 1 | 1 |
| 8 | PLUG | EPDM | 4A0176-01 | 2 | 2 | 2 | 2 | 2 |
| 9 | WATER SUPPLY TEE | SANTOPRENE | 4A1006-01 | 1 | 1 | 1 | 1 | 1 |
| 10 | FLANGE | EPDM | 439267-01 | 1 | 1 | 1 | 1 | 1 |
| 11 | INSULATION (E) | PE FOAM | 4A0392-01 | 1 | 1 | 1 | 1 | 1 |
| 12 | VINYL HOSE | L=50 | 7716-2025 | 1 | 1 | 1 | 1 | - |
| 13 | CONNECTING PIPE | PE | 3A0611-01 | 1 | 1 | 1 | 1 | - |
| | | - | 3A1335-01 | | | | | 1 |
| 14 | HOSE CLAMP | SS, 25 mm | 427443-03 | 3 | 3 | 3 | 3 | 3 |
| 15 | CUBE GUIDE (A) | ABS | 2A0660-01 | 1 | 1 | 1 | 1 | 1 |
| 16 | PUMP HOSE | EPDM | 4A1007-01 | 1 | 1 | 1 | 1 | 1 |
| 17 | RUBBER RING | EPDM | 4A1004-01 | 1 | 1 | 1 | 1 | 1 |
| 18 | BYPASS HOSE | SANTOPRENE | 4A1005-01 | 1 | 1 | 1 | 1 | 1 |
| 19 | HOSE CLAMP | SS, 18 mm | 427443-05 | 5 | 5 | 5 | 5 | 5 |
| 20 | SOLENOID VALVE | 207CB-GS1873 | 439322-01 | 2 | 2 | 2 | 2 | 2 |
| | TRUSS HEAD SCREW | 4X8 | 7C31-0408 | 2 | 2 | 2 | 2 | 2 |

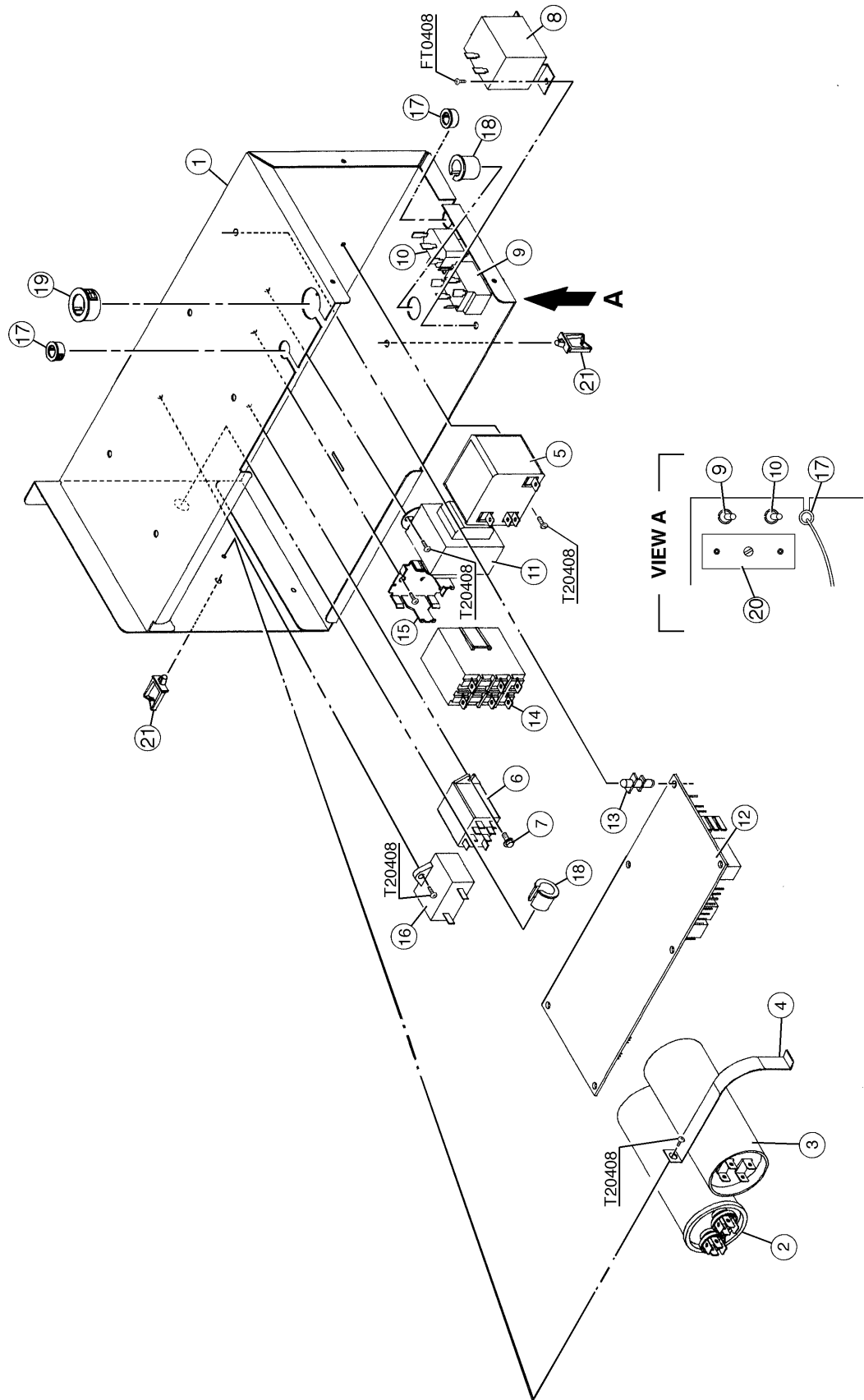
HA

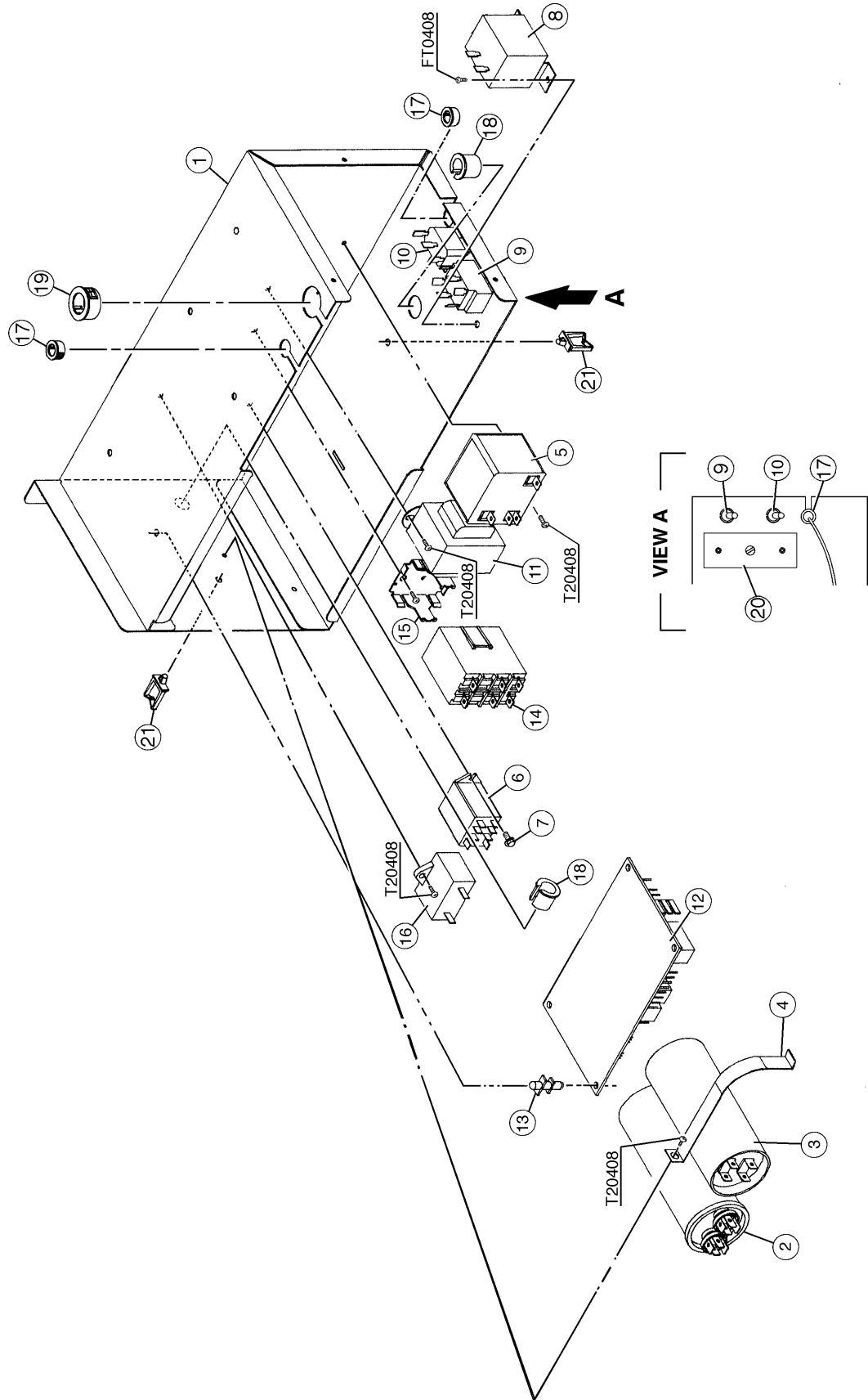
| MODEL: KML-400MAE TITLE: C. WATER CIRCUIT | | | | | | | | |
|---|-------------------------------|--------------------------|-------------|-----------------|------------|-----|---------------------|----------|
| INDEX NO. | DESCRIPTION | MATERIAL OR MODEL NUMBER | PART NUMBER | REQUIRED NUMBER | | | | |
| | | | | G-0 H-0 | H-1 H-2 | H-3 | J02385M- J02784B | J02785C- |
| 21 | ARROW LABEL | PES | 4A0096-01 | 1 | 1 | 1 | 1 | 1 |
| 22 | SOLENOID COVER | GS | 4A0996-01 | 2 | 2 | 2 | 2 | 2 |
| | T2 SCREW | 4X8 | 7P31-0408 | 4 | 4 | 4 | 4 | 4 |
| 23 | PUMP | - | 2A0749-01 | 1 | 1 | 1 | 1 | 1 |
| | TRUSS HEAD SCREW | 4X16, SS | 7C32-0416 | 4 | 4 | 4 | 4 | 4 |
| 24 | FLOAT SWITCH | 163795 | 4A0886-01 | 1 | 1 | 1 | 1 | 1 |
| | T2 SCREW | 4X8, SS | 7P32-0408 | 2 | 2 | 2 | 2 | 2 |
| 25 | FLOAT SWITCH BRACKET | ABS | 327757-01 | 1 | 1 | 1 | 1 | 1 |
| | T2 SCREW | 4X12, SS | 7P32-0412 | 2 | 2 | 2 | 2 | 2 |
| 26 | FLOAT SWITCH COVER | ABS | 3A0665-01 | 1 | 1 | 1 | 1 | 1 |
| | T2 SCREW | 4X12, SS | 7P32-0412 | 3 | 3 | 3 | 3 | 3 |
| 27 | VINYL HOSE | L=150 | 7716-1216 | 1 | 1 | 1 | 1 | 1 |
| 28 | SILICONE HOSE | L=275 | 7730-1519 | 1 | 1 | x1 | | |
| | | L=295 | 7730-1519 | | | o1 | 1 | 1 |
| 29 | BUSHING | OCB-875 | 428394-04 | 1 | 1 | 1 | 1 | 1 |
| 30 | WIRE SADDLE | VWS4238-C | 4A0338-02 | 8 | 8 | 8 | 8 | 8 |
| 31 | WELL NUT | 347011 | 4A1070-01 | 2 | 2 | 2 | 2 | 2 |
| 32 | INSULATION (A) - PUMP BRACKET | PE FOAM | 4A1052-01 | 1 | 1 | 1 | 1 | 1 |
| 33 | TOOTH WASHER | ZINC, M4 | 7R21-0400 | 1 | 1 | 1 | 1 | 1 |
| | T2 SCREW | 4X8 | 7P31-0408 | 1 | 1 | 1 | 1 | 1 |
| 34 | INSULATION (B) - PUMP BRACKET | PE FOAM | 4A1053-01 | 1 | 1 | 1 | 1 | 1 |
| 35 | HOSE CLAMP | SS, 27 mm | 427443-08 | 1 | 1 | 1 | 1 | 1 |
| 36 | HOSE CLAMP | SS, 20 mm | 427443-06 | 3 | 3 | 3 | 3 | 3 |
| 37 | INSULATION (A1) - BYPASS HOSE | NP | 4A1259-01 | 1 | 1 | 1 | 1 | 1 |
| 38 | INSULATION (A2) - BYPASS HOSE | NP | 4A1260-01 | 1 | 1 | 1 | 1 | 1 |
| 39 | INSULATION HOSE | L=25 | 7762-2030 | 1 | 1 | 1 | - | |
| 40 | FLOAT SWITCH SPACER | ABS | 4A0650-01 | 1 | 1 | 1 | 1 | - |
| 41 | ELBOW | - | 4A0393-01 | | | | | 1 |
| 42 | DRAIN | - | 309246-01 | | | | | 1 |
| 43 | O-RING | 1AP15 | 7611-P015 | | | | | 1 |

| MODEL: KML-400MWE TITLE: C. WATER CIRCUIT | | | | | | | | |
|---|---------------------|--------------------------|---------------------------|-----------------|-----|-----|----------------------------|----------|
| INDEX NO. | DESCRIPTION | MATERIAL OR MODEL NUMBER | PART NUMBER | REQUIRED NUMBER | | | | |
| | | | | G-0 H-1 | H-2 | H-3 | H-4 J00466M- J00615B | J00616C- |
| 1 | WATER SUPPLY PIPE | COPPER | 4A0768G01 | 1 | 1 | 1 | 1 | x1 |
| | | COPPER | 4A0768G04 | | | | | o1 |
| | T2 SCREW | 4X8 | 7P310408 | 2 | 2 | 2 | 2 | 2 |
| 2 | RUBBER GASKET | NR | 413854-03 | 1 | 1 | 1 | 1 | 1 |
| 3 | WATER VALVE BRACKET | GS | 321443-01 | 1 | 1 | 1 | 1 | 1 |
| | T2 SCREW | 4X8 | 7P310408 | 1 | 1 | 1 | 1 | 1 |
| 4 | WATER VALVE | J248-033 | 3U0111-03 | 1 | 1 | - | | |
| | | J248-072 | 3U0111-04 | | | 1 | 1 | 1 |
| 5 | SPRAY TUBE | PE | 1A0019-02 | 1 | x1 | | | |
| | | PE | 1A0260-02 | 1 | o1 | 1 | 1 | 1 |
| 6 | SPRAY GUIDE (A) | PE | 208586-01 | 6 | x6 | | | |
| | | - | 1A0260-02 | | o6 | 6 | 6 | 6 |
| 7 | WATER SUPPLY TUBE | PE | 2A0079-01 | 1 | 1 | 1 | 1 | 1 |
| 8 | PLUG | EPDM | 4A0176-01 | 2 | 2 | 2 | 2 | 2 |
| 9 | WATER SUPPLY TEE | SANTOPRENE | 4A1006-01 | 1 | 1 | 1 | 1 | 1 |
| 10 | FLANGE | EPDM | 439267-01 | 1 | 1 | 1 | 1 | 1 |
| 11 | INSULATION (E) | PE FOAM | 4A0392-01 | 1 | 1 | 1 | 1 | 1 |
| 12 | VINYL HOSE | L=50 | 7716-2025 | 1 | 1 | 1 | 1 | - |
| 13 | CONNECTING PIPE | PE | 3A0611-01 | 1 | 1 | 1 | 1 | - |
| | | - | 3A1335-01 | | | | | 1 |
| 14 | HOSE CLAMP | SS, 25 mm | 427443-03 | 3 | 3 | 3 | 3 | 3 |
| 15 | CUBE GUIDE (A) | ABS | 2A0660-01 | 1 | 1 | 1 | 1 | 1 |
| 16 | PUMP HOSE | EPDM | 4A1007-01 | 1 | 1 | 1 | 1 | 1 |
| 17 | RUBBER RING | EPDM | 4A1004-01 | 1 | 1 | 1 | 1 | 1 |
| 18 | BYPASS HOSE | SANTOPRENE | 4A1005-01 | 1 | 1 | 1 | 1 | 1 |
| 19 | HOSE CLAMP | SS, 18 mm | 427443-05 | 5 | 5 | 5 | 5 | 5 |
| 20 | SOLENOID VALVE | 207CB-GS1873 | 439322-01 | 2 | 2 | 2 | 2 | 2 |
| | TRUSS HEAD SCREW | 4X8 | 7C31-0408 | 2 | 2 | 2 | 2 | 2 |

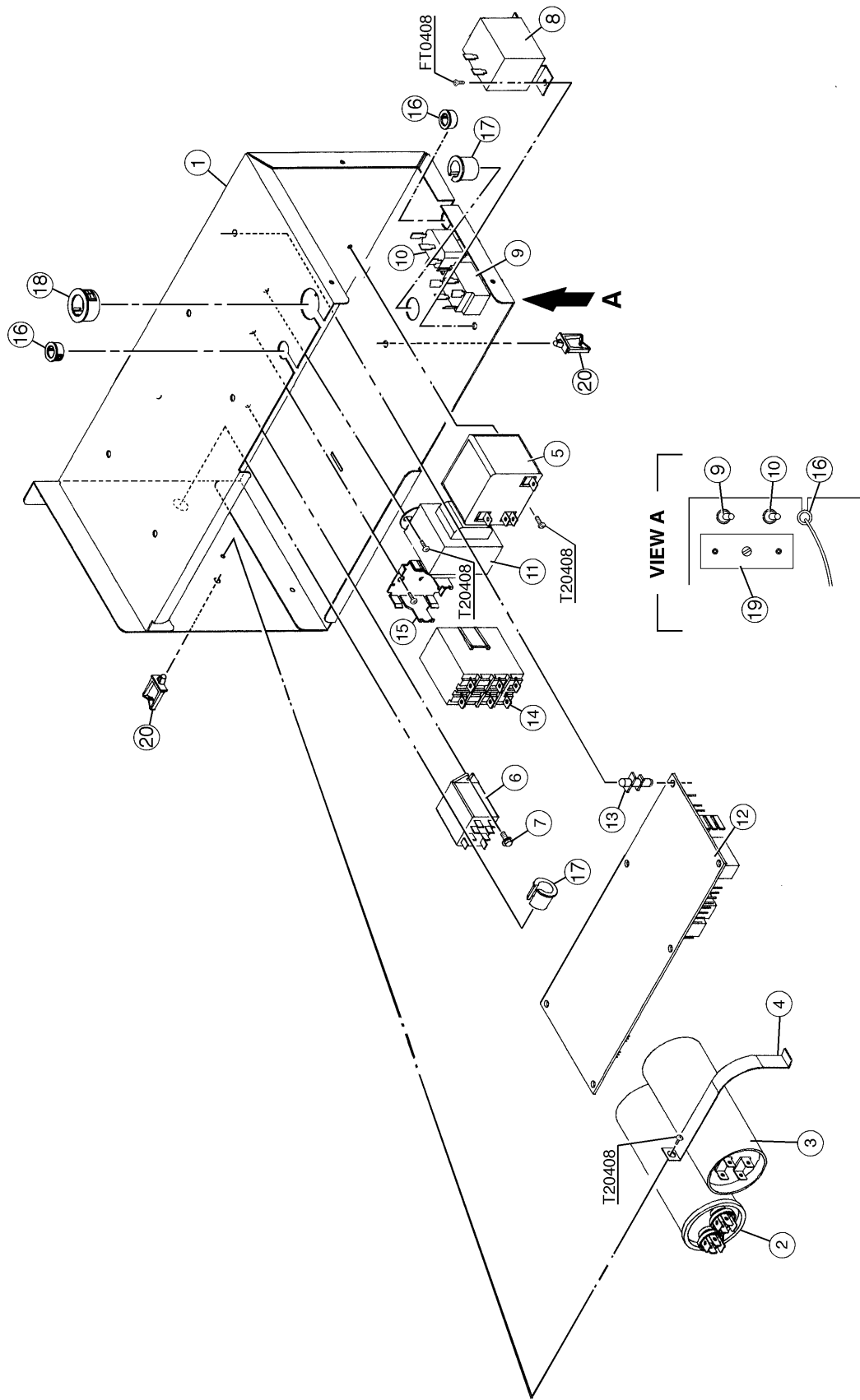
HA

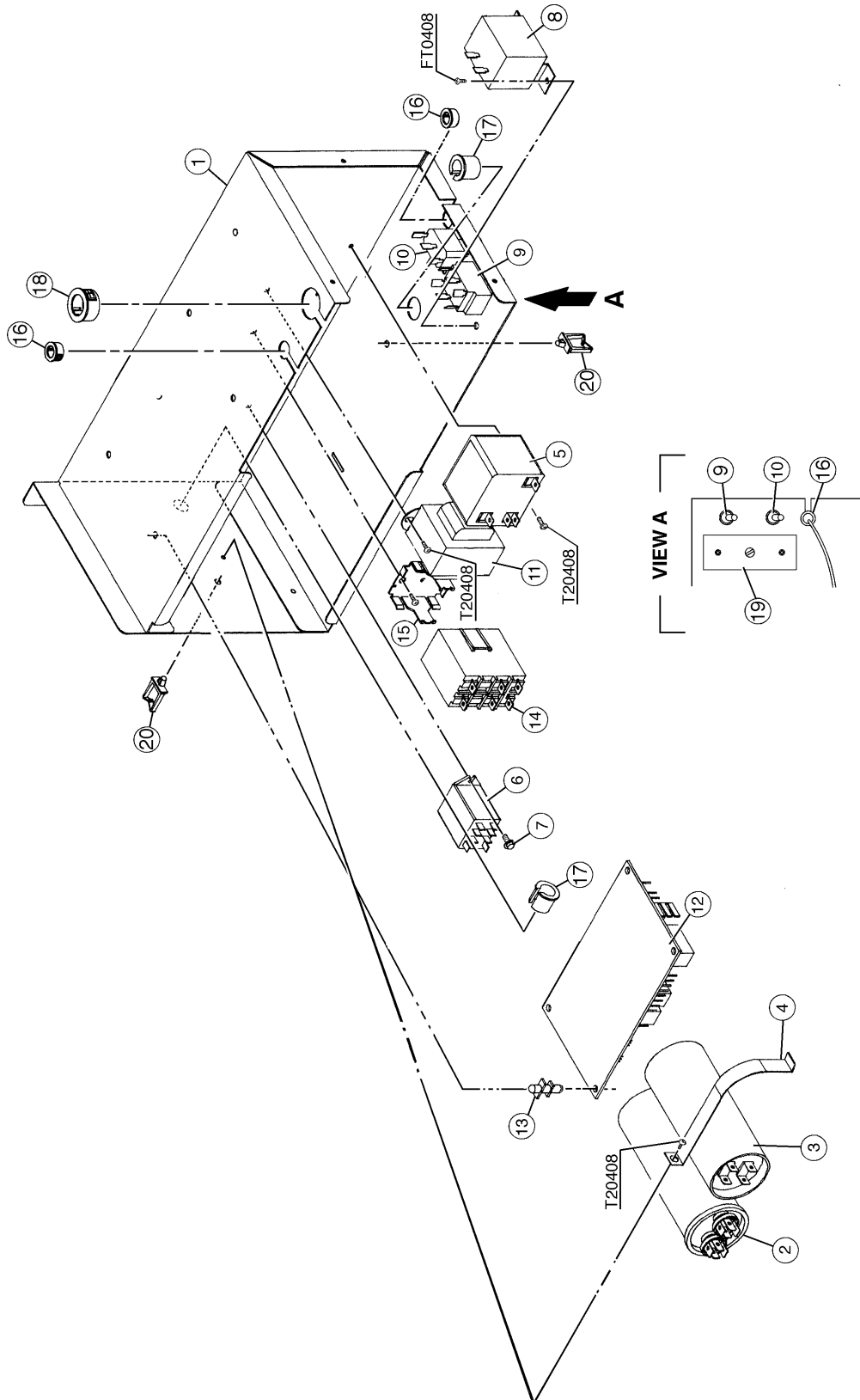
| MODEL: KML-400MWE TITLE: C. WATER CIRCUIT | | | | | | | | |
|---|-------------------------------|--------------------------|-------------|-----------------|-----|------------|---------------------|----------|
| INDEX NO. | DESCRIPTION | MATERIAL OR MODEL NUMBER | PART NUMBER | REQUIRED NUMBER | | | | |
| | | | | G-0 H-1 | H-2 | H-3 H-4 | J00466M- J00615B | J00616C- |
| 21 | ARROW LABEL | PES | 4A0096-01 | 1 | 1 | 1 | 1 | 1 |
| 22 | SOLENOID COVER | GS | 4A0996-01 | 2 | 2 | 2 | 2 | 2 |
| | T2 SCREW | 4X8 | 7P31-0408 | 4 | 4 | 4 | 4 | 4 |
| 23 | PUMP | - | 2A0749-01 | 1 | 1 | 1 | 1 | 1 |
| | TRUSS HEAD SCREW | 4X16, SS | 7C32-0416 | 4 | 4 | 4 | 4 | 4 |
| 24 | FLOAT SWITCH | 163795 | 4A0886-01 | 1 | 1 | 1 | 1 | 1 |
| | T2 SCREW | 4X8, SS | 7P32-0408 | 2 | 2 | 2 | 2 | 2 |
| 25 | FLOAT SWITCH BRACKET | ABS | 327757-01 | 1 | 1 | 1 | 1 | 1 |
| | T2 SCREW | 4X12, SS | 7P32-0412 | 2 | 2 | 2 | 2 | 2 |
| 26 | FLOAT SWITCH COVER | ABS | 3A0665-01 | 1 | 1 | 1 | 1 | 1 |
| | T2 SCREW | 4X12, SS | 7P32-0412 | 3 | 3 | 3 | 3 | 3 |
| 27 | VINYL HOSE | L=150 | 7716-1216 | 1 | 1 | 1 | 1 | 1 |
| 28 | SILICONE HOSE | L=275 | 7730-1519 | 1 | 1 | x1 | | |
| | | L=295 | 7730-1519 | | | o1 | 1 | 1 |
| 29 | BUSHING | OCB-875 | 428394-04 | 1 | 1 | 1 | 1 | 1 |
| 30 | WIRE SADDLE | VWS4238-C | 4A0338-02 | 8 | 8 | 8 | 8 | 8 |
| 31 | WELL NUT | 347011 | 4A1070-01 | 2 | 2 | 2 | 2 | 2 |
| 32 | INSULATION (A) - PUMP BRACKET | PE FOAM | 4A1052-01 | 1 | 1 | 1 | 1 | 1 |
| 33 | TOOTH WASHER | ZINC, M4 | 7R21-0400 | 1 | 1 | 1 | 1 | 1 |
| | T2 SCREW | 4X8 | 7P31-0408 | 1 | 1 | 1 | 1 | 1 |
| 34 | INSULATION (B) - PUMP BRACKET | PE FOAM | 4A1053-01 | 1 | 1 | 1 | 1 | 1 |
| 35 | HOSE CLAMP | SS, 27 mm | 427443-08 | 1 | 1 | 1 | 1 | 1 |
| 36 | HOSE CLAMP | SS, 20 mm | 427443-06 | 3 | 3 | 3 | 3 | 3 |
| 37 | INSULATION (A1) - BYPASS HOSE | NP | 4A1259-01 | 1 | 1 | 1 | 1 | 1 |
| 38 | INSULATION (A2) - BYPASS HOSE | NP | 4A1260-01 | 1 | 1 | 1 | 1 | 1 |
| 39 | INSULATION HOSE | L=25 | 7762-2030 | 1 | 1 | 1 | - | |
| 40 | FLOAT SWITCH SPACER | ABS | 4A0650-01 | 1 | 1 | 1 | 1 | - |
| 41 | ELBOW | - | 4A0393-01 | | | | | 1 |
| 42 | DRAIN | - | 309246-01 | | | | | 1 |
| 43 | O-RING | 1AP15 | 7611-P015 | | | | | 1 |



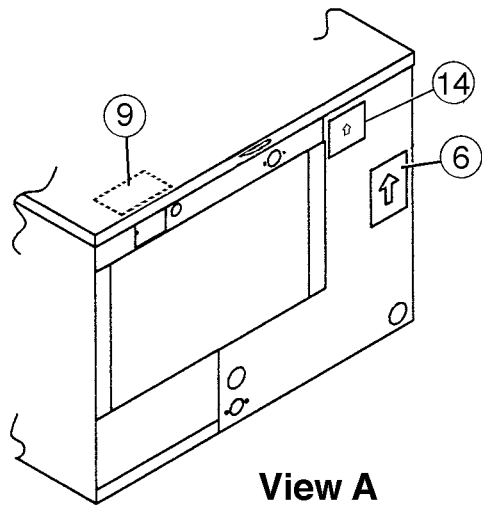
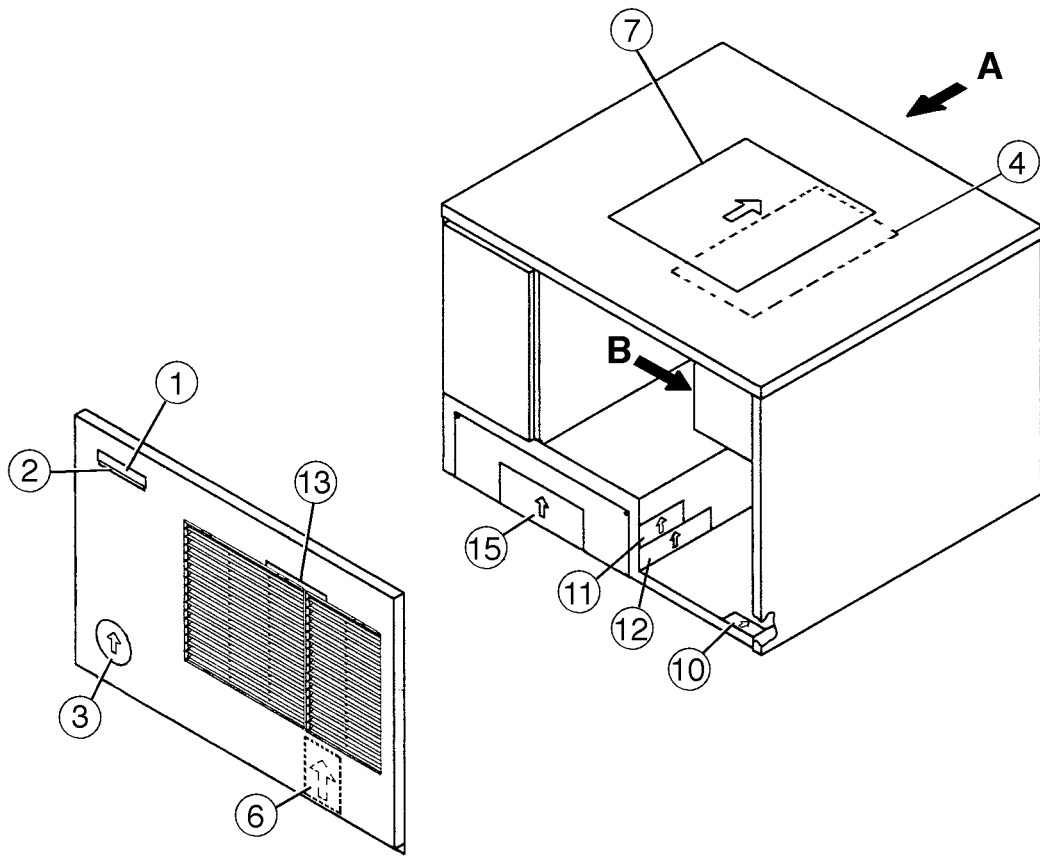


| MODEL: KML-400MAE TITLE: D. CONTROL BOX ASSEMBLY | | | | | | | | |
|--|----------------------|--------------------------|---------------------------|-----------------|-----|-----|-----|-----|
| INDEX NO. | DESCRIPTION | MATERIAL OR MODEL NUMBER | PART NUMBER | REQUIRED NUMBER | | | | |
| | | | | G-0 H-0 | H-1 | H-2 | H-3 | J-0 |
| 1 | CONTROL BOX | GS | 3A0602G01 | 1 | 1 | 1 | 1 | 1 |
| 2 | CAPACITOR | 25 \bar{r} 440 VAC | 439943-06 | 1 | 1 | 1 | 1 | 1 |
| 3 | CAPACITOR - STARTING | 88-108 \bar{r} 250V | 3A0076-03 | 1 | 1 | 1 | 1 | 1 |
| 4 | STRAP | GS | 434580-10 | 1 | 1 | 1 | 1 | x1 |
| | | GS | 434580-11 | | | | | o1 |
| | T2 SCREW | 4X8 | 7P31-0408 | 1 | 1 | 1 | 1 | 1 |
| 5 | STARTER | 040-0001-20 | 434923-01 | 1 | 1 | 1 | 1 | 1 |
| | T2 SCREW | 4X8 | 7P31-0408 | 1 | 1 | 1 | 1 | 1 |
| 6 | RELAY | LY2F 120 VAC | 406132-07 | 1 | 1 | 1 | 1 | 1 |
| 7 | TAPPING SCREW | 3X8 | 431415-01 | 2 | 2 | 2 | 2 | 2 |
| 8 | THERMOSTAT | A30-3815-00 | 4A0824-01 | 1 | 1 | 1 | 1 | 1 |
| | TRUSS HEAD SCREW | 4X8 | 7C31-0408 | 2 | 2 | 2 | 2 | 2 |
| 9 | TOGGLE SWITCH | 7563K6 | 443119-01 | 1 | 1 | 1 | 1 | 1 |
| 10 | TOGGLE SWITCH | 8966K211 | 4A0985-01 | 1 | 1 | 1 | 1 | 1 |
| 11 | TRANSFORMER | 26D285H | 3A0172-01 | 1 | 1 | 1 | 1 | 1 |
| | T2 SCREW | 4X8 | 7P31-0408 | 2 | 2 | 2 | 2 | 2 |
| 12 | CONTROLLER BOARD | MY9KM910 | 2U0127-01 | 1 | - | | | |
| | | HOSHIZAKI-001 | 2A0836-01 | | 1 | 1 | 1 | 1 |
| 13 | BOARD SUPPORT | CBLS37-M | 4A0336-03 | 6 | 4 | 4 | 4 | 4 |
| 14 | MAGNETIC CONTACTOR | VC20 | 428393-01 | 1 | 1 | 1 | 1 | 1 |
| 15 | BRACKET | BW 9154 | 428393F01 | 1 | 1 | 1 | 1 | 1 |
| | T2 SCREW | 4X8 | 7P31-0408 | 2 | 2 | 2 | 2 | 2 |
| 16 | CAPACITOR | 5 \bar{r} 250 VAC | 443192-02 | 1 | 1 | 1 | 1 | 1 |
| | T2 SCREW | 4X8 | 7P31-0408 | 1 | 1 | 1 | 1 | 1 |
| 17 | BUSHING | OCB-500 | 428394-02 | 2 | 2 | 2 | 2 | 2 |
| 18 | BUSHING | OCB-625 | 428394-03 | 2 | 2 | 2 | 2 | 2 |
| 19 | BUSHING | OCB-875 | 428394-04 | 1 | 1 | 1 | 1 | 1 |
| 20 | CONTROL LABEL | PES FILM | 434934-01 | 1 | 1 | 1 | - | |
| | | PES FILM | 4A1758-01 | | | | 1 | 1 |
| 21 | WIRE SADDLE | VWS4238-C | 4A0338-02 | 2 | 2 | 2 | 2 | 2 |

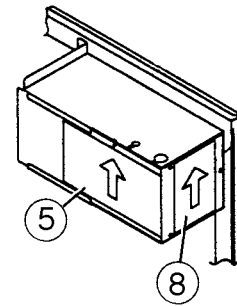




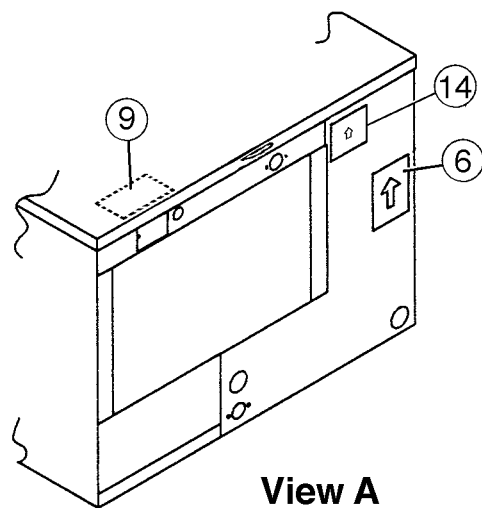
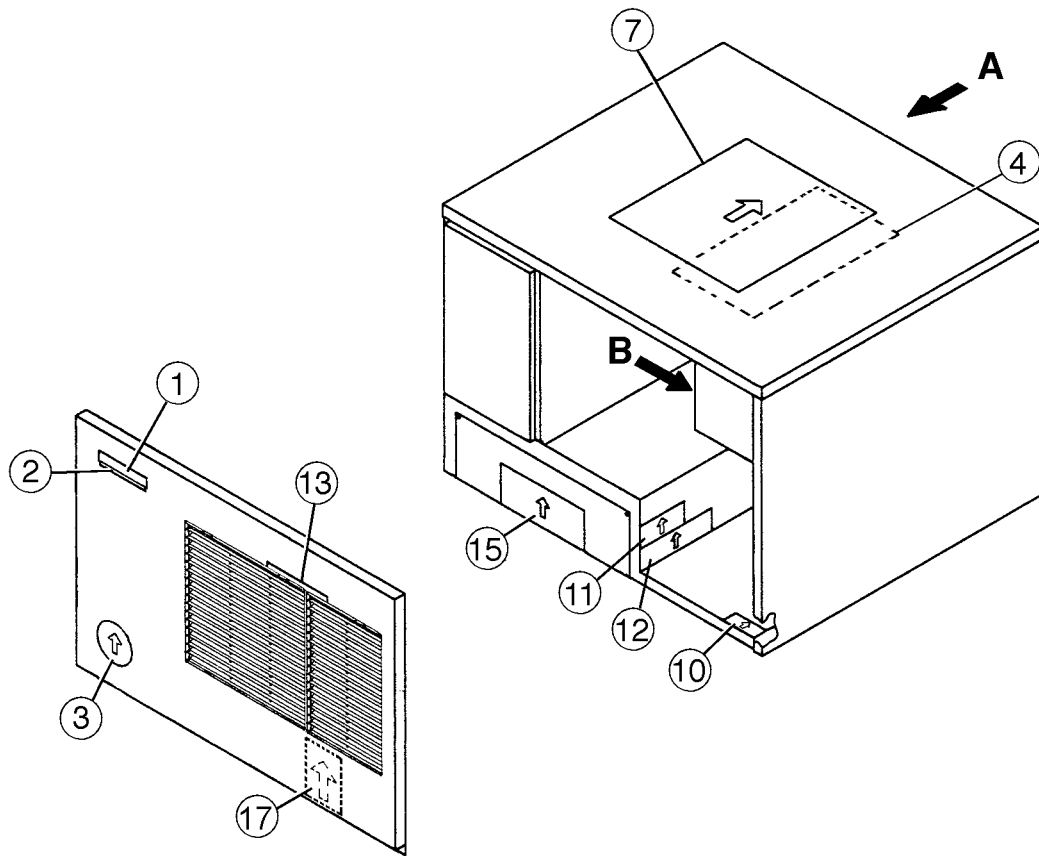
| MODEL: KML-400MWE TITLE: D. CONTROL BOX ASSEMBLY | | | | | | | | |
|--|----------------------|--------------------------|---------------------------|-----------------|-----|-----|-----|-----|
| INDEX NO. | DESCRIPTION | MATERIAL OR MODEL NUMBER | PART NUMBER | REQUIRED NUMBER | | | | |
| | | | | G-0 H-1 | H-2 | H-3 | H-4 | J-0 |
| 1 | CONTROL BOX | GS | 3A0602G01 | 1 | 1 | 1 | 1 | 1 |
| 2 | CAPACITOR | 25 \bar{r} 440 VAC | 439943-06 | 1 | 1 | 1 | 1 | 1 |
| 3 | CAPACITOR - STARTING | 88-108 \bar{r} 250V | 3A0076-03 | 1 | 1 | 1 | 1 | 1 |
| 4 | STRAP | GS | 434580-10 | 1 | 1 | 1 | 1 | x1 |
| | | GS | 434580-11 | | | | | o1 |
| | T2 SCREW | 4X8 | 7P31-0408 | 1 | 1 | 1 | 1 | 1 |
| 5 | STARTER | 040-0001-20 | 434923-01 | 1 | 1 | 1 | 1 | 1 |
| | T2 SCREW | 4X8 | 7P31-0408 | 1 | 1 | 1 | 1 | 1 |
| 6 | RELAY | LY2F 120 VAC | 406132-07 | 1 | 1 | 1 | 1 | 1 |
| 7 | TAPPING SCREW | 3X8 | 431415-01 | 2 | 2 | 2 | 2 | 2 |
| 8 | THERMOSTAT | A30-3815-00 | 4A0824-01 | 1 | 1 | 1 | 1 | 1 |
| | TRUSS HEAD SCREW | 4X8 | 7C31-0408 | 2 | 2 | 2 | 2 | 2 |
| 9 | TOGGLE SWITCH | 7563K6 | 443119-01 | 1 | 1 | 1 | 1 | 1 |
| 10 | TOGGLE SWITCH | 8966K211 | 4A0985-01 | 1 | 1 | 1 | 1 | 1 |
| 11 | TRANSFORMER | 26D285H | 3A0172-01 | 1 | 1 | 1 | 1 | 1 |
| | T2 SCREW | 4X8 | 7P31-0408 | 2 | 2 | 2 | 2 | 2 |
| 12 | CONTROLLER BOARD | MY9KM910 | 2U0127-01 | 1 | - | | | |
| | | HOSHIZAKI-001 | 2A0836-01 | | 1 | 1 | 1 | 1 |
| 13 | BOARD SUPPORT | CBLS37-M | 4A0336-03 | 6 | 4 | 4 | 4 | 4 |
| 14 | MAGNETIC CONTACTOR | VC20 | 428393-01 | 1 | 1 | 1 | 1 | 1 |
| 15 | BRACKET | BW9154 | 428393F01 | 1 | 1 | 1 | 1 | 1 |
| | T2 SCREW | 4X8 | 7P31-0408 | 2 | 2 | 2 | 2 | 2 |
| 16 | BUSHING | OCB-500 | 428394-02 | 2 | 2 | 2 | 2 | 2 |
| 17 | BUSHING | OCB-625 | 428394-03 | 2 | 2 | 2 | 2 | 2 |
| 18 | BUSHING | OCB-875 | 428394-04 | 1 | 1 | 1 | 1 | 1 |
| 19 | CONTROL LABEL | PES FILM | 434934-01 | 1 | - | | | |
| | | PES FILM | | | 1 | 1 | 1 | 1 |
| 20 | WIRE SADDLE | VWS4238-C | 4A0338-02 | 2 | 2 | 2 | 2 | 2 |
| | | | | | | | | |
| | | | | | | | | |



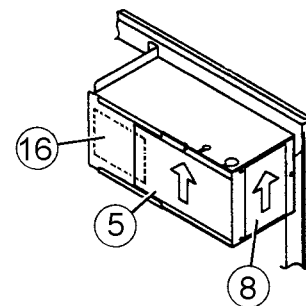
View A



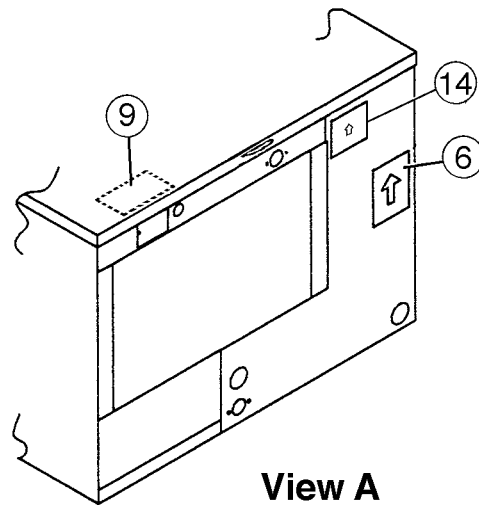
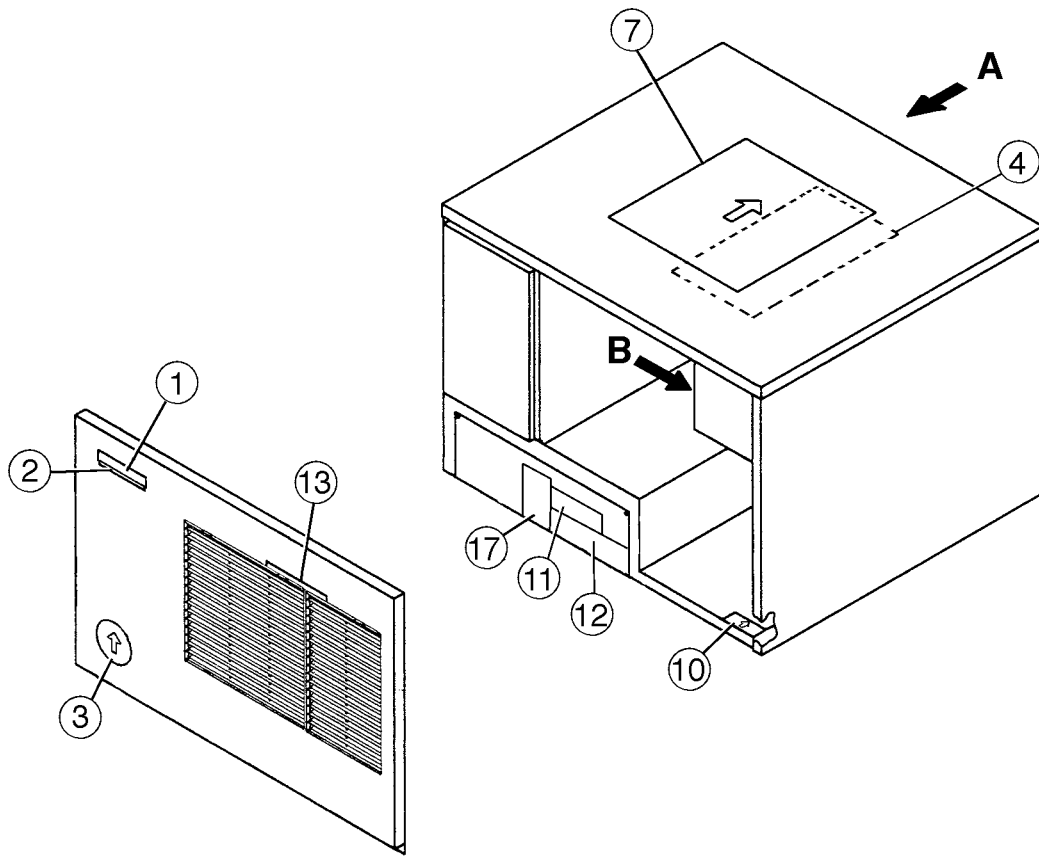
View B



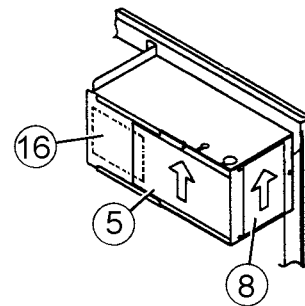
View A



View B



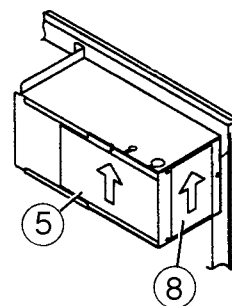
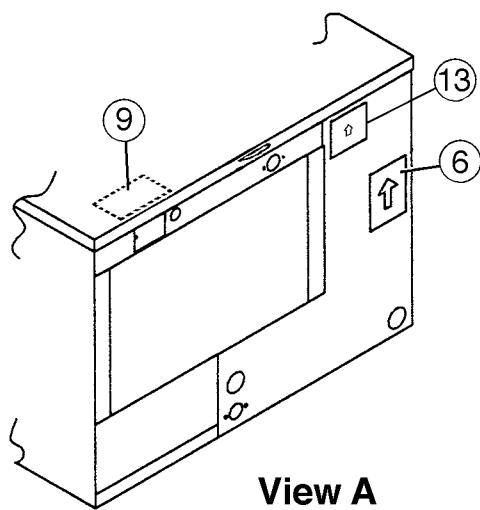
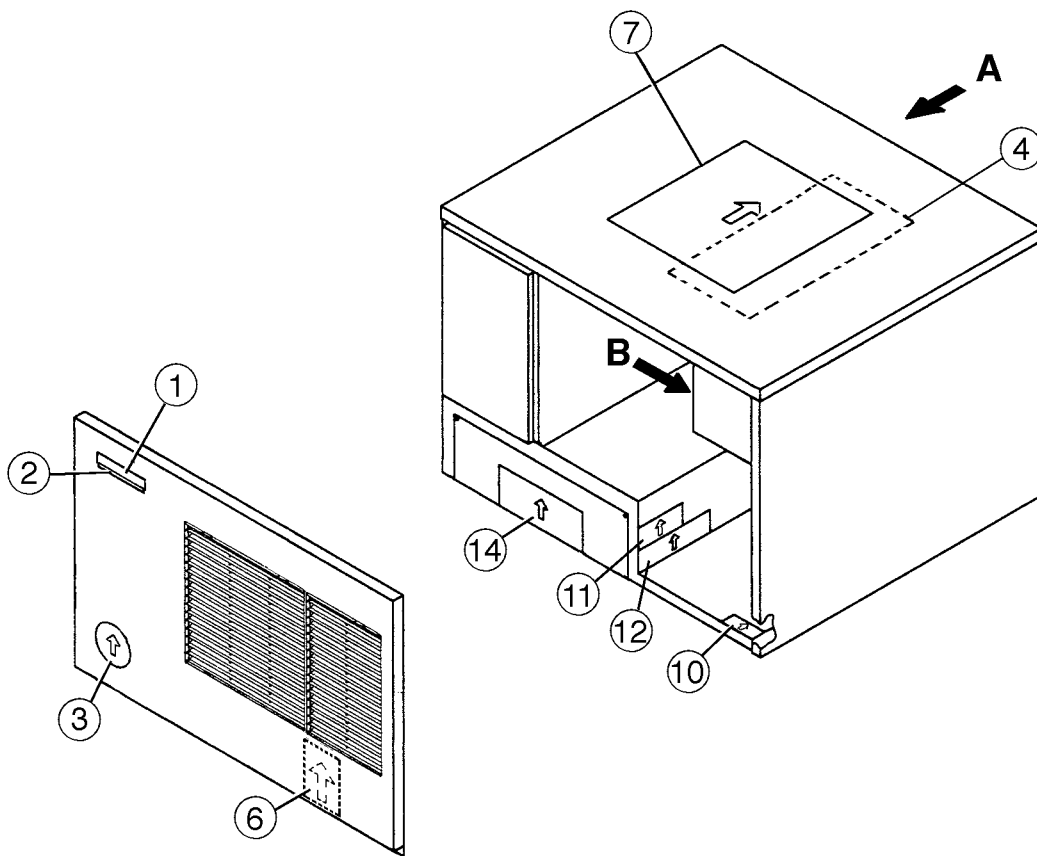
View A

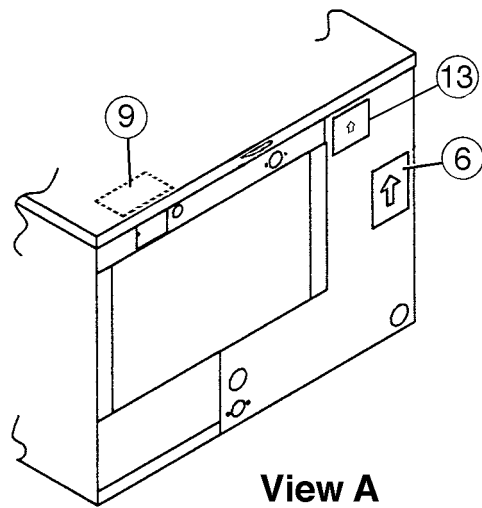
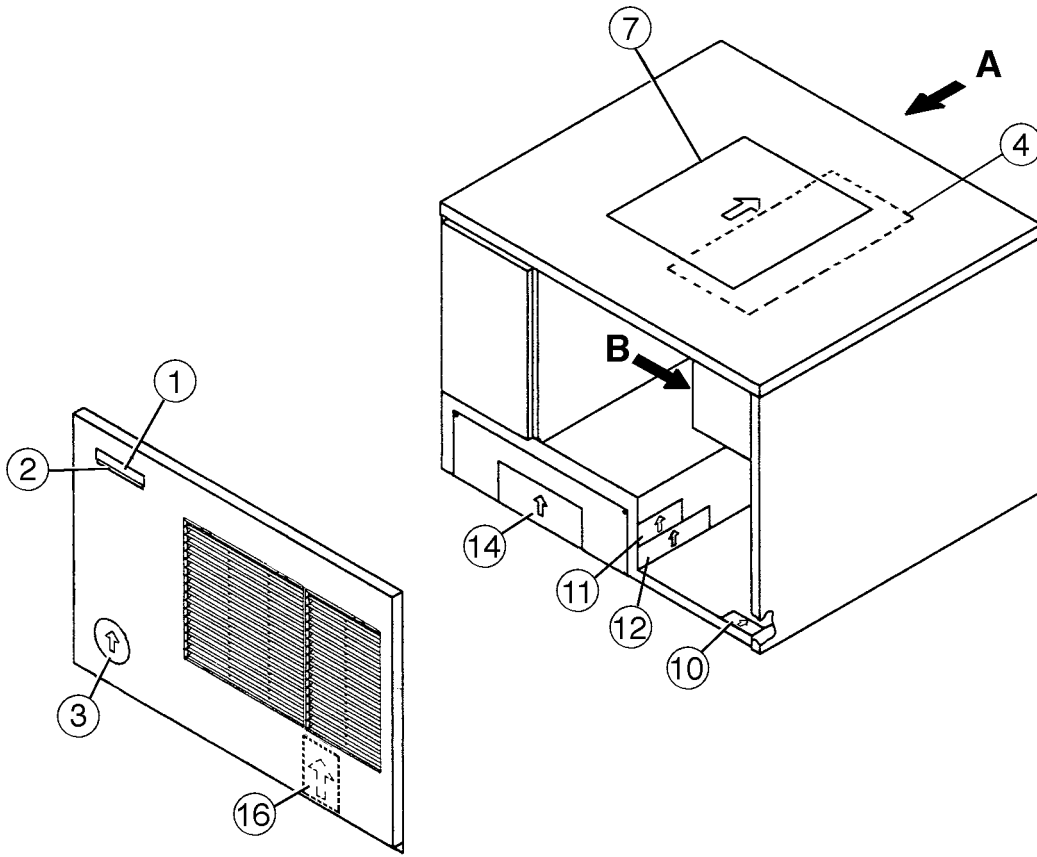


View B

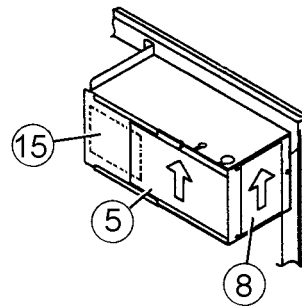
HA

| MODEL: KML-400MAE TITLE: E. LABEL LOCATION | | | | | | | | |
|--|--------------------------------------|--------------------------|-------------|-----------------|-----|-----|----------------------------|----------|
| INDEX NO. | DESCRIPTION | MATERIAL OR MODEL NUMBER | PART NUMBER | REQUIRED NUMBER | | | | |
| | | | | G-0 H-0 | H-1 | H-2 | H-3 J02385M- J02784B | J02785C- |
| 1 | EMBLEM | PETP FILM | 4A0560-01 | 1 | 1 | 1 | 1 | 1 |
| 2 | MODEL NUMBER LABEL | PETP FILM | 443341-33 | 1 | 1 | 1 | 1 | 1 |
| 3 | LABEL - PENGUIN - HA (R) | PETP FILM | 4A0526-01 | 1 | 1 | 1 | 1 | 1 |
| 4 | MAINTENANCE LABEL | PVC FILM | 3A0878-01 | 1 | 1 | 1 | 1 | 1 |
| 5 | WIRING LABEL | PVC FILM | 3A0637-01 | 1 | 1 | 1 | 1 | 1 |
| 6 | NAMEPLATE | PES FILM | 4A1088-01 | 2 | 1 | 1 | 1 | 1 |
| 7 | INSTRUCTION SHEET | PAPER | 2A0750-01 | 1 | 1 | 1 | 1 | - |
| | | PAPER | 2A1253-01 | | | | | 1 |
| 8 | MANUAL LABEL | PVC FILM | 4A1090-01 | 1 | 1 | 1 | 1 | 1 |
| 9 | TAG - WARNING: ELECTRICAL CONNECTION | PAPER | 435005-01 | 1 | 1 | 1 | 1 | 1 |
| 10 | LABEL - R22 | PES FILM | 440362-01 | 1 | 1 | 1 | 1 | 1 |
| 11 | CAUTION LABEL (F) | PVC FILM | 439146-01 | 1 | 1 | 1 | 1 | 1 |
| 12 | CAUTION LABEL (K) | PVC FILM | 439150-01 | 1 | 1 | 1 | 1 | 1 |
| 13 | LABEL - AIR FILTER | PETP FILM | 426177-01 | 1 | 1 | 1 | 1 | 1 |
| 14 | INSTRUCTION LABEL | PVC FILM | 444575-01 | 1 | 1 | 1 | 1 | 1 |
| 15 | WARNING LABEL - MANUAL FILL | PVC FILM | 4A1091-01 | 1 | 1 | 1 | 1 | - |
| 16 | LABEL – CONTROL BOARD | PVC FILM | 3A0988-01 | | 1 | 1 | 1 | 1 |
| 17 | RATING LABEL | PES FILM | 4A1611-01 | | 1 | 1 | 1 | 1 |
| | | | | | | | | |
| | | | | | | | | |
| | | | | | | | | |
| | | | | | | | | |
| | | | | | | | | |
| | | | | | | | | |
| | | | | | | | | |
| | | | | | | | | |
| | | | | | | | | |

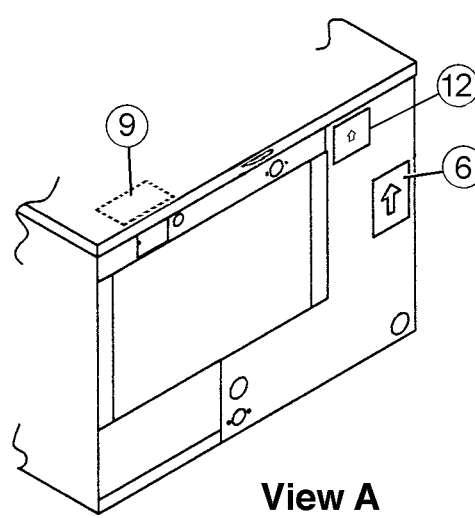
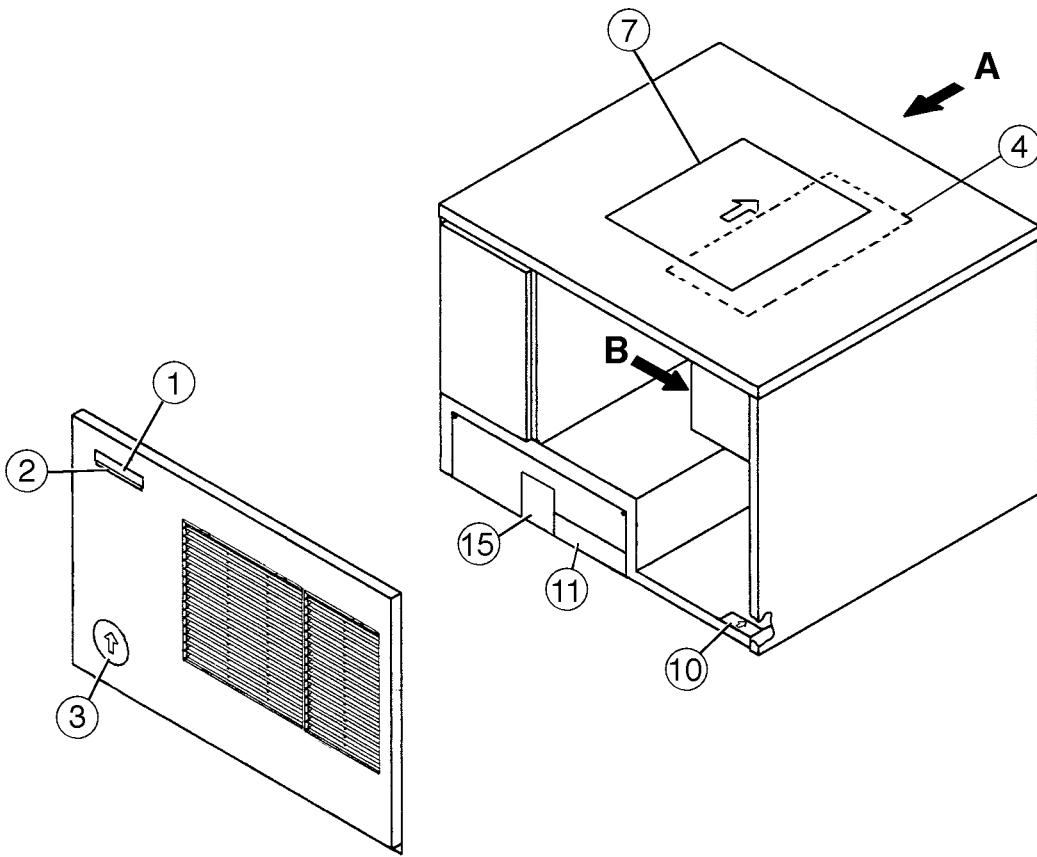




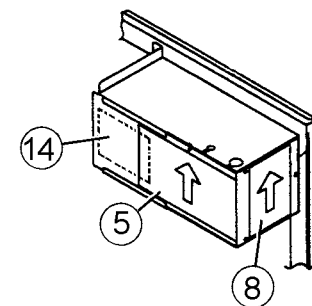
View A



View B

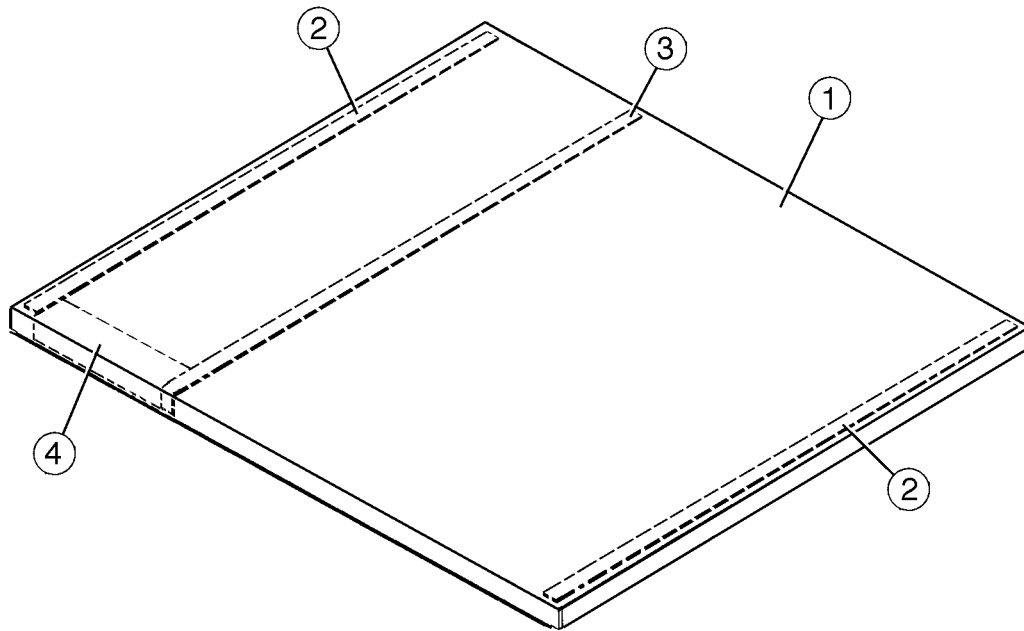


View A



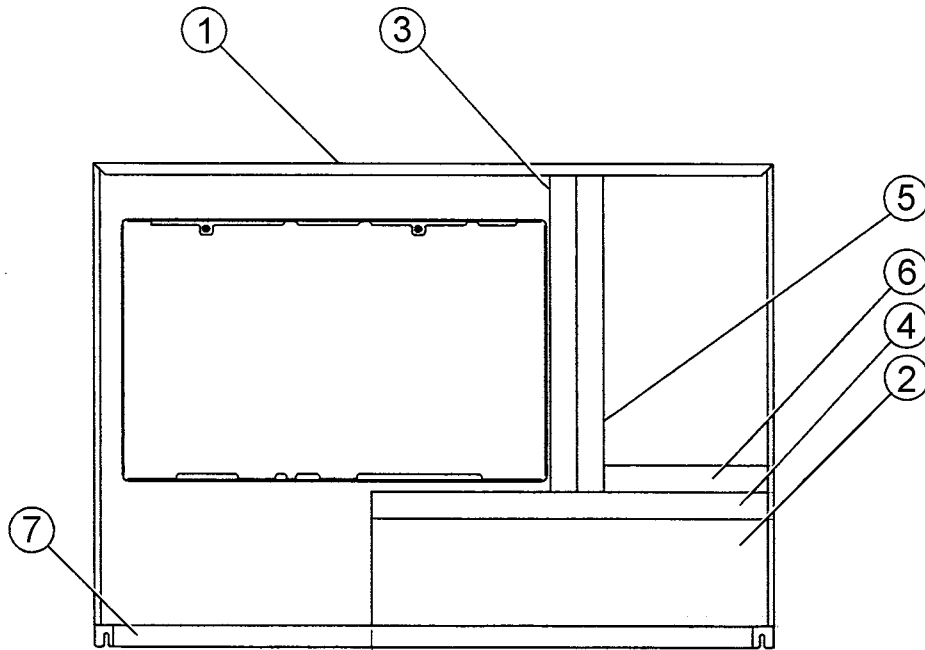
View B

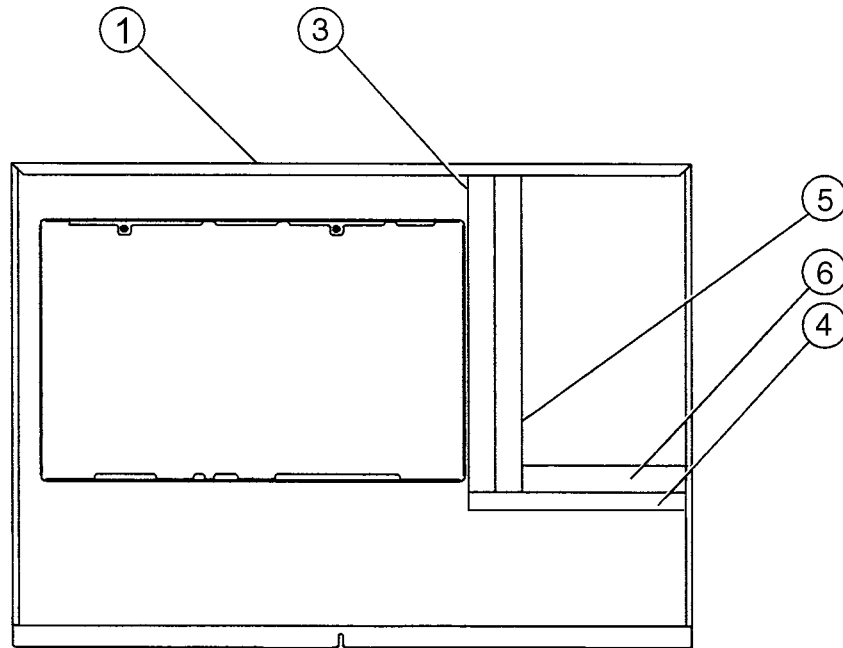
| MODEL: KML-400MWE TITLE: E. LABEL LOCATION | | | | | | | | |
|--|--------------------------------------|--------------------------|---------------------------|-----------------|-----|-----|----------------------------|----------|
| INDEX NO. | DESCRIPTION | MATERIAL OR MODEL NUMBER | PART NUMBER | REQUIRED NUMBER | | | | |
| | | | | G-0 H-1 | H-2 | H-3 | H-4 J00466M- J00615B | J00616C- |
| 1 | EMBLEM | PETP FILM | 4A0560-01 | 1 | 1 | 1 | 1 | 1 |
| 2 | MODEL NUMBER LABEL | PETP FILM | 443341-34 | 1 | 1 | 1 | 1 | 1 |
| 3 | LABEL - PENGUIN - HA (R) | PETP FILM | 4A0526-01 | 1 | 1 | 1 | 1 | 1 |
| 4 | MAINTENANCE LABEL | PVC FILM | 3A0878-01 | 1 | 1 | 1 | 1 | 1 |
| 5 | WIRING LABEL | PVC FILM | 3A0637-01 | 1 | 1 | 1 | - | |
| | | PVC FILM | 3A1211-01 | | | | 1 | 1 |
| 6 | NAMEPLATE | PES FILM | 4A1089-01 | 2 | 1 | 1 | 1 | 1 |
| 7 | INSTRUCTION SHEET | PAPER | 2A0750-01 | 1 | 1 | 1 | 1 | 1 |
| 8 | MANUAL LABEL | PVC FILM | 4A1090-01 | 1 | 1 | 1 | 1 | 1 |
| 9 | TAG - WARNING: ELECTRICAL CONNECTION | PAPER | 435005-01 | 1 | 1 | 1 | 1 | 1 |
| 10 | LABEL - R22 | PES FILM | 440362-01 | 1 | 1 | 1 | 1 | 1 |
| 11 | CAUTION LABEL (F) | PVC FILM | 439146-01 | 1 | 1 | 1 | 1 | 1 |
| 12 | CAUTION LABEL (K) | PVC FILM | 439150-01 | 1 | 1 | 1 | 1 | 1 |
| 13 | INSTRUCTION LABEL | PVC FILM | 444575-01 | 1 | 1 | 1 | 1 | 1 |
| 14 | WARNING LABEL - MANUAL FILL | PVC FILM | 4A1091-01 | 1 | 1 | 1 | 1 | - |
| 15 | LABEL – CONTROL BOARD | PVC FILM | 3A0988-01 | | 1 | 1 | 1 | 1 |
| 16 | RATING LABEL | PES FILM | 4A1612-01 | | 1 | 1 | 1 | 1 |
| | | | | | | | | |
| | | | | | | | | |
| | | | | | | | | |
| | | | | | | | | |
| | | | | | | | | |
| | | | | | | | | |
| | | | | | | | | |
| | | | | | | | | |
| | | | | | | | | |
| | | | | | | | | |
| | | | | | | | | |



HA

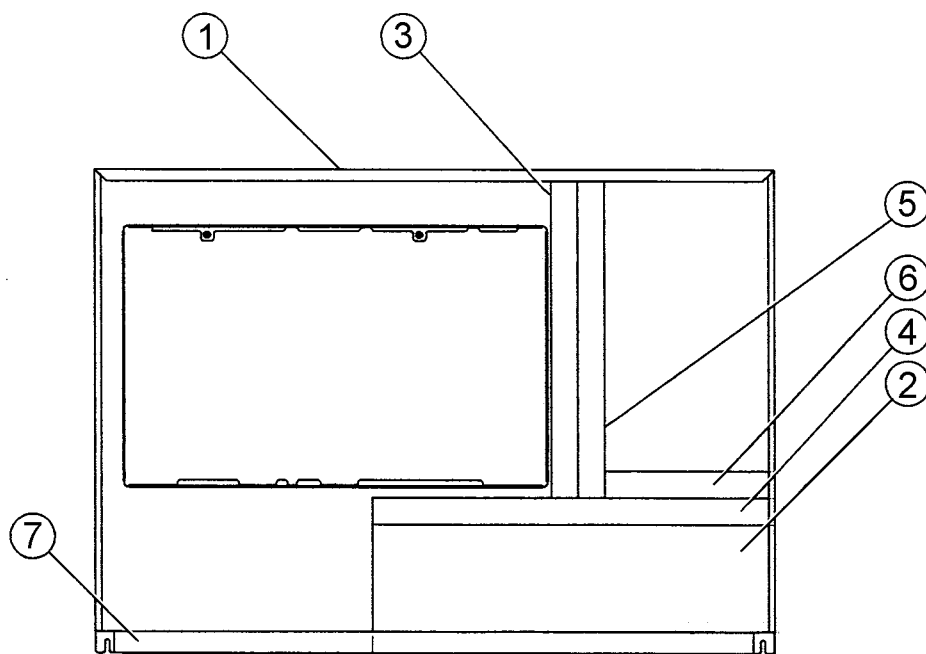
| MODEL: KML-400MAE, MWE TITLE: F. TOP PANEL ASSEMBLY | | | | | | | | |
|---|-------------|--------------------------|---------------------------|-----------------|-----|-----|------------|-----|
| INDEX NO. | DESCRIPTION | MATERIAL OR MODEL NUMBER | PART NUMBER | REQUIRED NUMBER | | | | |
| | | | | G-0 H-0 | H-1 | H-2 | H-3 H-4 | J-0 |
| 1 | TOP PANEL | SS | 213543-01 | 1 | 1 | 1 | 1 | 1 |
| 2 | GASKET | PVC | 427014-04 | 2 | 2 | 2 | 2 | 2 |
| 3 | GASKET (A) | NORMOUNT V710 | 324859-03 | 1 | 1 | 1 | 1 | 1 |
| 4 | INSULATION | PE FOAM | 438012-01 | 1 | 1 | 1 | 1 | 1 |
| | | | | | | | | |
| | | | | | | | | |
| | | | | | | | | |
| | | | | | | | | |
| | | | | | | | | |
| | | | | | | | | |
| | | | | | | | | |
| | | | | | | | | |
| | | | | | | | | |
| | | | | | | | | |
| | | | | | | | | |
| | | | | | | | | |
| | | | | | | | | |
| | | | | | | | | |
| | | | | | | | | |
| | | | | | | | | |
| | | | | | | | | |
| | | | | | | | | |
| | | | | | | | | |
| | | | | | | | | |

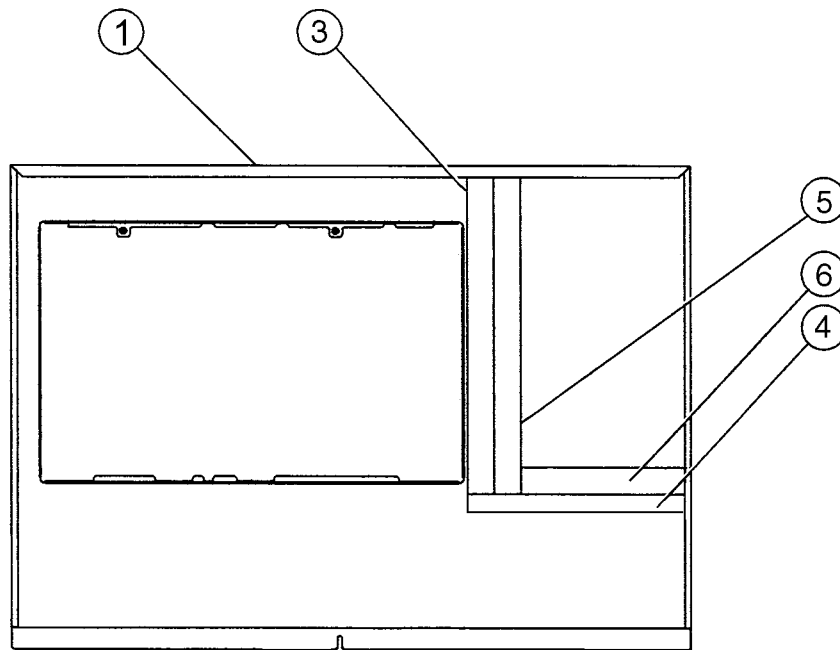




HA

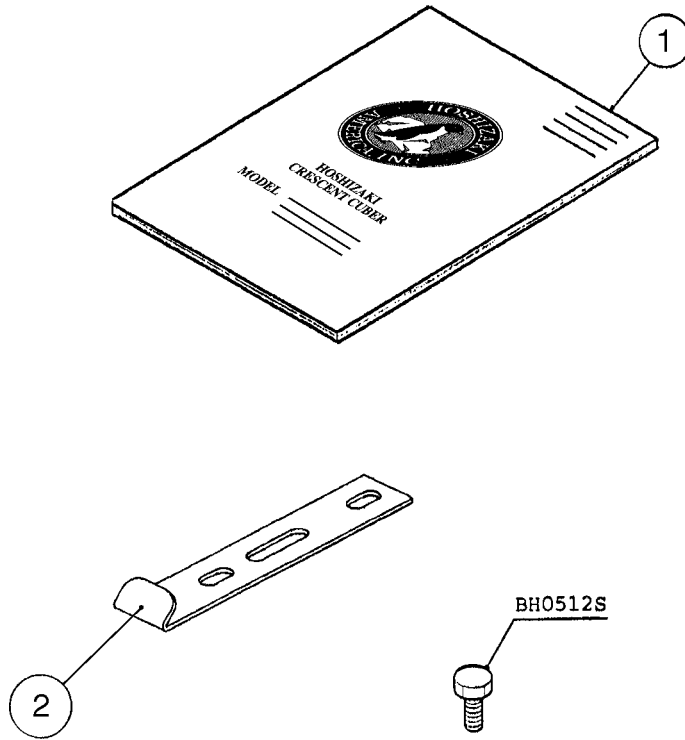
| MODEL: KML-400MAE TITLE: G. FRONT PANEL ASSEMBLY | | | | | | | | |
|--|--------------------------|--------------------------|-------------|-----------------|-----|-----|--|-------------------------|
| INDEX NO. | DESCRIPTION | MATERIAL OR MODEL NUMBER | PART NUMBER | REQUIRED NUMBER | | | | |
| | | | | G-0 H-0 | H-1 | H-2 | H-3 <small>J02385M- J02784B</small> | <small>J02785C-</small> |
| 1 | FRONT PANEL (A) | SS | 2A0990-01 | 1 | 1 | 1 | 1 | - |
| | | SS | 2A1455-01 | | | | | 1 |
| 2 | INSULATION - FRONT PANEL | PE FOAM | 3A0673-01 | 1 | 1 | 1 | 1 | - |
| 3 | FOAM SEAL | L=370 | 4A0661L01 | 1 | 1 | 1 | 1 | 1 |
| 4 | FOAM SEAL | L=450 | 4A0661L01 | 1 | 1 | 1 | 1 | - |
| | | L=250 | 4A0661L01 | | | | | 1 |
| 5 | FOAM SEAL | L=370 | 4A1163L01 | 1 | 1 | 1 | 1 | 1 |
| 6 | FOAM SEAL | L=190 | 4A1163L01 | 1 | 1 | 1 | 1 | 1 |
| 7 | TAPE - NORTON SEAL | L=717 | 8208-0001 | 1 | 1 | 1 | 1 | - |
| | | | | | | | | |
| | | | | | | | | |
| | | | | | | | | |
| | | | | | | | | |
| | | | | | | | | |
| | | | | | | | | |
| | | | | | | | | |
| | | | | | | | | |
| | | | | | | | | |
| | | | | | | | | |
| | | | | | | | | |
| | | | | | | | | |
| | | | | | | | | |
| | | | | | | | | |
| | | | | | | | | |
| | | | | | | | | |
| | | | | | | | | |
| | | | | | | | | |
| | | | | | | | | |
| | | | | | | | | |
| | | | | | | | | |





HA

| MODEL: KML-400MWE TITLE: G. FRONT PANEL ASSEMBLY | | | | | | | | |
|--|--------------------------|--------------------------|-------------|-----------------|-----|-----|----------------------------|----------|
| INDEX NO. | DESCRIPTION | MATERIAL OR MODEL NUMBER | PART NUMBER | REQUIRED NUMBER | | | | |
| | | | | G-0 H-1 | H-2 | H-3 | H-4 J00466M- J00615B | J00616C- |
| 1 | FRONT PANEL (A) | SS | 2A0990-01 | 1 | 1 | 1 | 1 | - |
| | | SS | 2A1455-01 | | | | | 1 |
| 2 | INSULATION - FRONT PANEL | PE FOAM | 3A0673-01 | 1 | 1 | 1 | 1 | - |
| 3 | FOAM SEAL | L=370 | 4A0661L01 | 1 | 1 | 1 | 1 | 1 |
| 4 | FOAM SEAL | L=450 | 4A0661L01 | 1 | 1 | 1 | 1 | - |
| | | L=250 | 4A0661L01 | | | | | 1 |
| 5 | FOAM SEAL | L=370 | 4A1163L01 | 1 | 1 | 1 | 1 | 1 |
| 6 | FOAM SEAL | L=190 | 4A1163L01 | 1 | 1 | 1 | 1 | 1 |
| 7 | TAPE - NORTON SEAL | L=717 | 8208-0001 | 1 | 1 | 1 | 1 | - |
| | | | | | | | | |
| | | | | | | | | |
| | | | | | | | | |
| | | | | | | | | |
| | | | | | | | | |
| | | | | | | | | |
| | | | | | | | | |
| | | | | | | | | |
| | | | | | | | | |
| | | | | | | | | |
| | | | | | | | | |
| | | | | | | | | |
| | | | | | | | | |
| | | | | | | | | |
| | | | | | | | | |
| | | | | | | | | |
| | | | | | | | | |
| | | | | | | | | |
| | | | | | | | | |



HA

| MODEL: KML-400MAE, MWE TITLE: J. ACCESSORIES | | | | | | | | |
|--|--------------------|--------------------------|---------------------------|-----------------|-----|-----|------------|-----|
| INDEX NO. | DESCRIPTION | MATERIAL OR MODEL NUMBER | PART NUMBER | REQUIRED NUMBER | | | | |
| | | | | G-0 H-0 | H-1 | H-2 | H-3 H-4 | J-0 |
| 1 | INSTRUCTION MANUAL | PAPER | 91A1BA10A | 1 | 1 | 1 | 1 | 1 |
| 2 | UNIVERSAL BRACE | GS | 4A0363-01 | 2 | 2 | 2 | 2 | 2 |
| | | | | | | | | |
| | | | | | | | | |
| | | | | | | | | |
| | | | | | | | | |
| | | | | | | | | |
| | | | | | | | | |
| | | | | | | | | |
| | | | | | | | | |
| | | | | | | | | |
| | | | | | | | | |
| | | | | | | | | |
| | | | | | | | | |
| | | | | | | | | |
| | | | | | | | | |
| | | | | | | | | |
| | | | | | | | | |
| | | | | | | | | |
| | | | | | | | | |
| | | | | | | | | |
| | | | | | | | | |
| | | | | | | | | |
| | | | | | | | | |
| | | | | | | | | |
| | | | | | | | | |
| | | | | | | | | |
| | | | | | | | | |
| | | | | | | | | |
| | | | | | | | | |