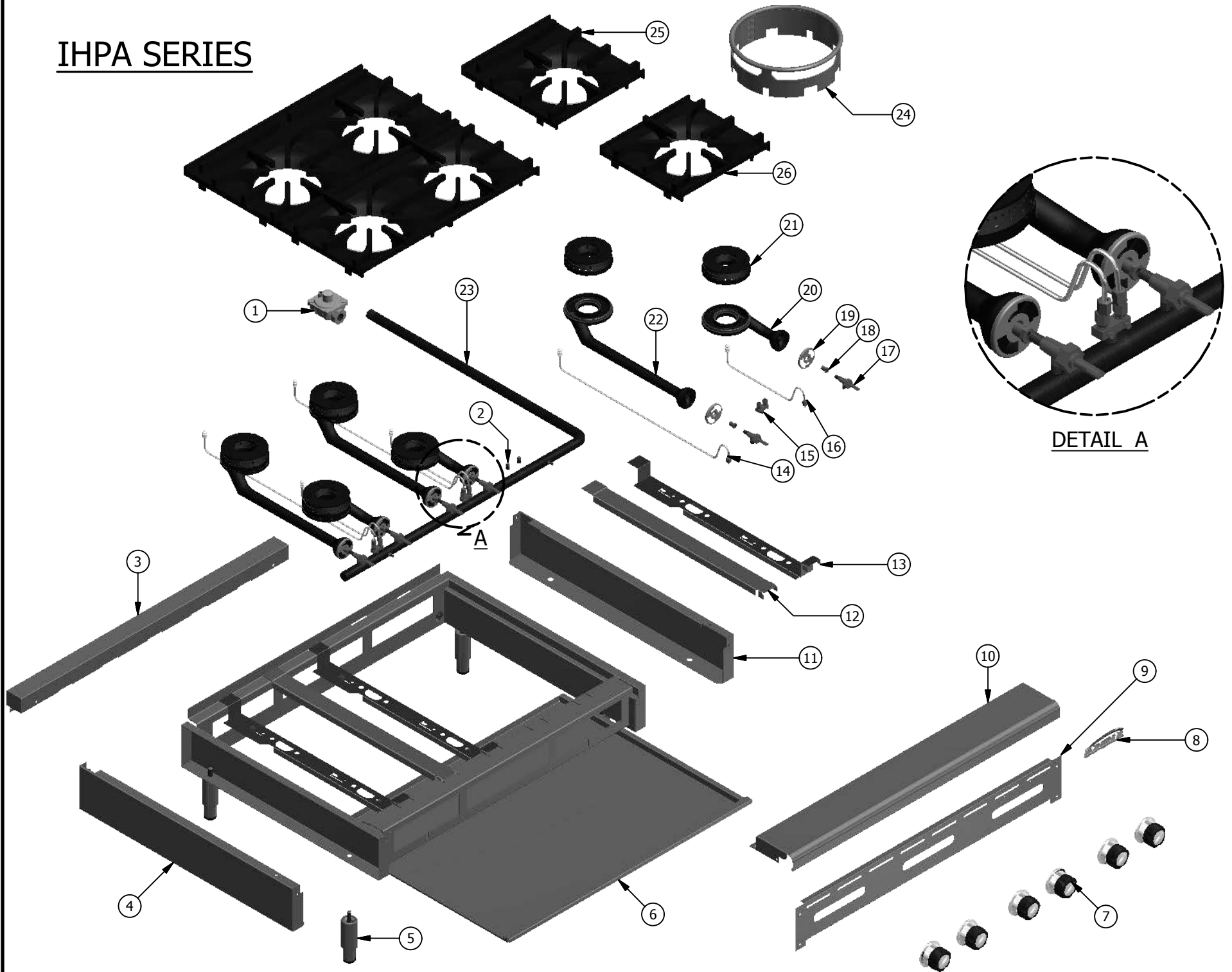


IHPA SERIES



IHPA Series - Hot Plate

ITEM	DESCRIPTION	PART NO.	12"	24"	36"	48"
1	GAS PRESSURE REGULATOR	38733	1	1	1	1
***	L.P. PRESSURE REGULATOR	38734	1	1	1	1
2	SQUARE HEAD PLUG 1/8	30257	1	2	3	4
3	12"BACK TRIM	31197	1	-	-	-
***	24" BACK TRIM	31198	-	1	-	-
***	36" BACK TRIM	31199	-	-	1	-
***	48" BACK TRIM	31200	-	-	-	1
4	SIDE PANEL (L/H)	31235	1	1	1	1
***	IHPA-SD SIDE PANEL (L/H)	31318	1	1	1	1
5	ADJUSTABLE LEG	3901	4	4	4	4
6	12" CRUMB TRAY	34741	1	-	-	-
***	12" CRUMB TRAY (IHPA-SD)	31310	1	-	-	-
***	24" CRUMB TRAY	34728	-	1	-	-
***	24" CRUMB TRAY (IHPA-SD)	31311	-	1	-	-
***	36" CRUMB TRAY	34742	-	-	1	-
***	36" CRUMB TRAY (IHPA-SD)	31312	-	-	1	-
***	48" CRUMB TRAY	34743	-	-	-	1
***	48" CRUMB TRAY (IHPA-SD)	31313	-	-	-	1
7	RESTAURANT SERIES, OPEN BURNER	36330	1-2	2-4	3-6	4-8
8	SMALL IMPERIAL LOGO	37766	1	1	1	1
***	PUSH NUT	36569	2	2	2	2
9	12" VALVE COVER	31227	1	-	-	-
***	24" VALVE COVER	31228	-	1	-	-
***	36" VALVE COVER	31229	-	-	1	-
***	48" VALVE COVER	31230	-	-	-	1
10	12" LANDING LEDGE	31209	1	-	-	-
***	24" LANDING LEDGE	31210	-	1	-	-
***	36" LANDING LEDGE	31211	-	-	1	-
***	48" LANDING LEDGE	31212	-	-	-	1
11	SIDE PANEL (R/H)	31236	1	1	1	1
***	IHPA-SD SIDE PANEL (R/H)	31319	1	1	1	1
12	IR- TOP GRATE SUPPORT	21016	-	1	2	3
***	IHPA-SD TOP GRATE SUPPORT (same as SU)	38529	-	1	2	3
13	BURNER HANGER	37876	1	2	3	4
***	IHPA-SD BURNER HANGER (same as SU)	38528	1	2	3	4
14	REAR PILOT ASSY.	35715	1	2	3	4
15	DOUBLE PILOT VALVE	1003	1	2	3	4
***	3/16" SHORT BRASS COMPRESSION NUT	30277	2	4	6	8
***	3/16" BRASS COMPRESSION SLEEVE	30280	2	4	6	8
16	FRONT PILOT ASSY.	35714	1	2	3	4
17	GAS VALVE BURNER	1610	1-2	2-4	3-6	4-8
18	ORIFICE #36 (NAT)	2061	1-2	2-4	3-6	4-8
***	ORIFICE #53 (LP)	2076	1-2	2-4	3-6	4-8
19	AIR SHUTTER	1007	1-2	2-4	3-6	4-8
20	VENTURI (FRONT)	38051	1	2	3	4
21	BURNER HEAD	2680	1-2	2-4	3-6	4-8

IHPA Series - Hot Plate

ITEM	DESCRIPTION	PART NO.	12"	24"	36"	48"
22	VENTURI (BACK)	38052	1	2	3	4
23	12" GAS MANIFOLD	0855	1	-	-	-
***	12" GAS MANIFOLD (IHPA -SD)	CALL FACTORY	1	-	-	-
***	24" GAS MANIFOLD (same as IR)	1360	-	1	-	-
***	24" GAS MANIFOLD (IHPA -SD)	CALL FACTORY	-	1	-	-
***	36" GAS MANIFOLD (same as IR)	1361	-	-	1	-
***	36" GAS MANIFOLD (IHPA-SD)	CALL FACTORY	-	-	1	-
***	48" GAS MANIFOLD (same as IR)	0858	-	-	-	1
***	48" GAS MANIFOLD (IHPA-SD)	CALL FACTORY	-	-	-	1
24	WOK RING	38707	Opt	Opt	Opt	Opt
25	REAR TOP GRATE	38050	1	2	3	4
26	FRONT GRATE	38049	1	2	3	4