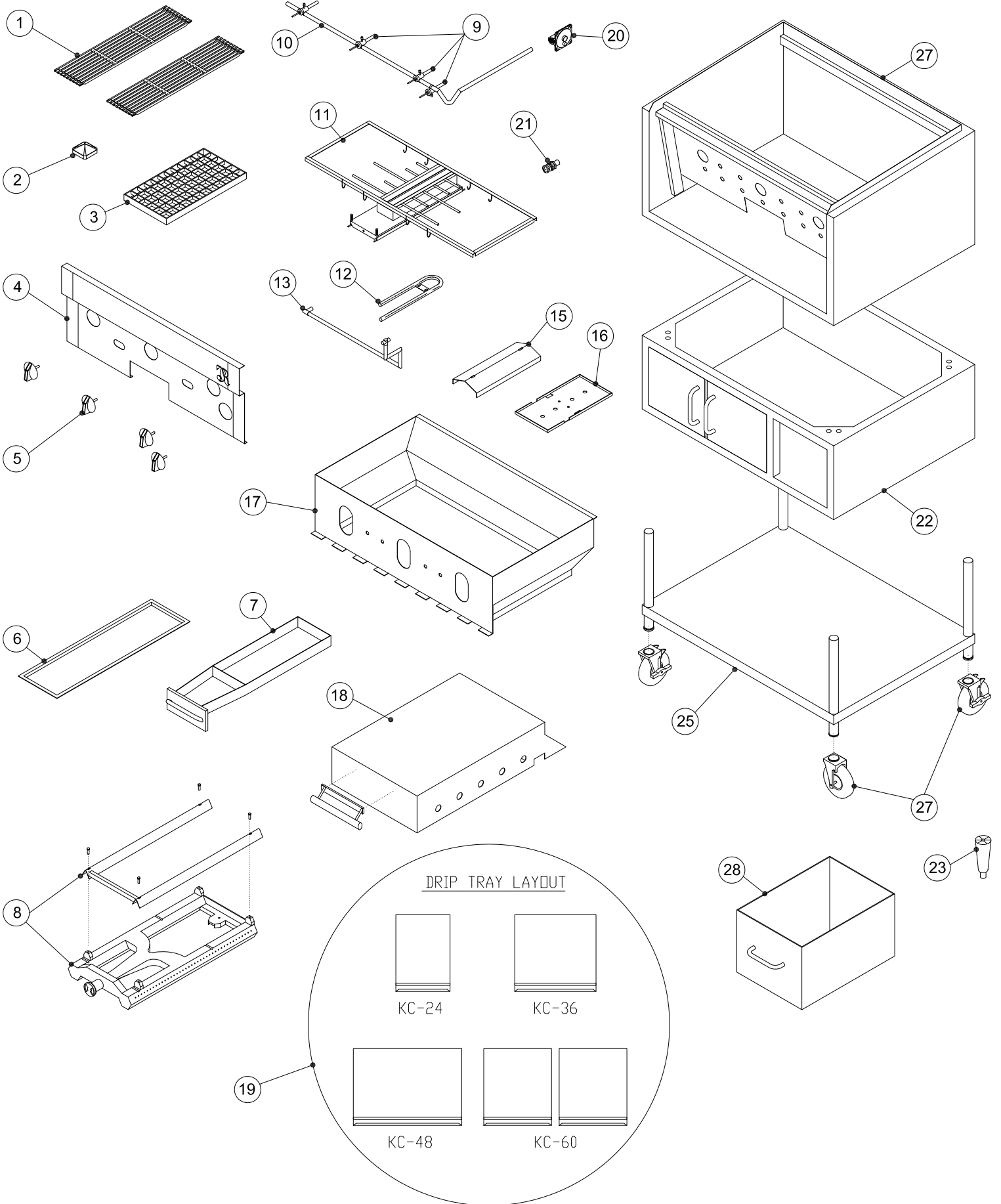


TITAN RANGE - KC CHITWOOD SMOKE BROILER

Jade Range

Field Service Part List



CHITWOOD SMOKE BROILER, KC SERIES

ITEM	DESCRIPTION	PART #	LIST
1	9-BAR TOP GRATE (5" X 21") FULL	1014800000	
	4-BAR TOP GRATE (FOR KC-24)	1011600000	
	5-BAR TOP GRATE (FOR KC-36) (NLA)	8451500000	
	8-BAR TOP GRATE (FOR KC-48)	1017500000	
2	CERAMIC TILE	3000010355	
	KC-24 & 36 1BOX REQ. - KC-48 & 60, 2 BOXES REQ.	BR0025	
3	BOTTOM GRATE - WAFFLE 8" X 15"	1014700000	
	BOTTOM GRATE - WAFFLE 4" X 15" (HALF)	1014700100	
4	FRONT PANEL, KC-24	7515900000	
	FRONT PANEL, KC-36	7515910000	
	FRONT PANEL, KC-48	7515920000	
	FRONT PANEL, KC-60	7515930000	
5	KNOB, CHROME	3023100200	
6	GREASE TRAY, KC-24	8531100090	
	GREASE TRAY, KC-36	8531110090	
	GREASE TRAY, KC-48	8531120090	
	GREASE TRAY, KC-60	8531130090	
7	SMOKE BOX ASSY (KC-24)	7560700090	
	SMOKE BOX ASSY (KC-36)	7560710090	
	SMOKE BOX ASSY (KC-48)	7560720090	
	SMOKE BOX ASSY (KC-60)	7560730090	
8	BURNER ASSY. RADIANT & HARDWARE	8442500000	
	BURNER, MAIN	1015400000	
	AIR SHUTTER W/ SCREW	3012600000	
	SCREW, FOR AIR SHUTTER	3454000000	
	BOLT, 1/4"-20 X 1" (RADIANT) EA. HOLD DOWN (4 USED)	3425600000	
	S/S RADIANT	7560610090	
9	ORIFICE, #39 NG (MAIN BURNER)	4620800000	
	ORIFICE, #54 LG (MAIN BURNER)	4621400000	
	VALVE, BURNER W/ OUT ORIFICE (MAIN & SMOKE BOX)	4418500200	
	EXTENSION FROM VALVE TO BURNER	4623300000	
10	MANIFOLD ASSY. W/ VALVES FOR KC-24	7560100090	
	MANIFOLD ASSY. W/ VALVES FOR KC-36	7560110090	
	MANIFOLD ASSY. W/ VALVES FOR KC-48	7560120090	
	MANIFOLD ASSY. W/ VALVES FOR KC-60	7560130090	
	PLUG, 1/8 HX HD BLACK	1813000000	
11	SMOKE GEN. & BURNER FRAME ASSY., KC-24	7560200090	
	SMOKE GEN. & BURNER FRAME ASSY., KC-36	7560210090	
	SMOKE GEN. & BURNER FRAME ASSY., KC-60	7560220090	
	SMOKE GEN. & BURNER FRAME ASSY., KC-60	7560230090	
12	BURNER, SMOKE BOX (TUBE BURNER)	1212600000	
	ORIFICE, #59 NG SMOKE BOX	4622600000	
	ORIFICE, #70 LG SMOKE BOX	4622400000	
13	TUBING S/S, 8/8" X 1"	5612700000	
	SLEEVE, (FERRULE) 3/8" COMP.	1816900000	
	NUT, 3/8" COMP	1833000000	
	ORIFICE ELBOW 90	1830100000	
14	PILOT, SMOKE BOX (STD.) ON LEFT (NG ORIFICE)	4617000000	
	PILOT, SMOKE BOX (STD.) ON RIGHT (NG ORIFICE)	4617100000	
	PILOT, ORIFICE LP SPUD	4623700000	
	PILOT, S/S TIP W/ HEX NUT	4611200000	
	TUBING, S/S 1/4" X 1"	5612800000	
	NUT, 1/4" COMP.	1830700000	
	SLEEVE, (FERRULE) 1/4" COMP.	1832200000	
VALVE, DOUBLE PILOT	4414800200		
15	BAFFLE SMOKER GENERATOR	7513700000	
16	BAFFLE SMOKER	7514000000	
17	FIRE BOX, KC-24	7560300090	
	FIRE BOX KC-36	7560310090	
	FIRE BOX, WELD ASSY KC48	7560320090	
	FIRE BOX, WELD ASSY KC60	7560330090	
18	HOOD LARGE 22" (LIST LOCATION SIDE)	8408200000	
	HOOD SMALL 16" (LIST LOCATION SIDE) (NLA)	8408300000	
	HOOD HANDLE (NLA)	2500127894	
19	DRIP PAN, KC-24	7560800090	
	DRIP PAN, KC-36	7560810090	
	DRIP PAN, KC-48	7560820090	
	DRIP PAN, KC-60 (2 REQ.)	7560830090	
20	3/4" REGULATOR 5.0" W.C. NAT.	4613500000	
	3/4" REGULATOR 10.0" W.C. L.P.	4613400000	
21	PILOT, S/S TIP W/ HEX NUT	4611200000	
	PILOT TUBING, 1/4" S/S (SOLD PER FOOT)	5612800000	
	NUT, 1/4" COMP.	1830700000	
	SLEEVE, (FERRULE) 1/4"	1832200000	

Continue next page

CHITWOOD SMOKE BROILER, KC SERIES

ITEM	DESCRIPTION	PART #	LIST
22	BASE, ENCLOSED, 24", KC-24	2100010940	
	BASE, ENCLOSED, 36", KC-36	2100010927	
	STAND, ENCLOSED, 48", KC-48	2900010776	
	BASE, ENCLOSED, 60", KC-60	N/A	
23	LEG, VERTICAL (SET OF 4)	2100000101	
	LEG, 6"	3012700000	
24	CASTERS (NON-LOCKING) 5"	3000011404	
	CASTERS (-LOCKING) 5"	3000011403	
25	BOTTOM SHELF		
26	APPLICATOR	3024400000	
27	CASTERS (NON-LOCKING) 3 1/2"	3019100000	
	CASTERS (-LOCKING) 3 1/2"	3030200000	
28	DRAWER, SMOKE WELD ASSY. (KC-48)		
	DRAWER, SMOKE WELD ASSY. (KC-60)		
29	HICKORY WOOD 40 LB. BOX (NOT SHOWN)	3014300000	
	MESQUITE WOOD 40 LB. BOX (NOT SHOWN)	3015100000	

MODEL NO.	NUMBER OF BURNERS	TOP GRATES FULL	TOP GRATES PARTIAL	BOTTOM GRATES FULL	BOTTOM GRATES HALF
KC-24	2		4 (1) 4-BAR	2	1
KC-36	3		6 (1) 5-BAR	4	N/A
KC-48	4		8 (1) 8-BAR	5	1
KC-60	5		11 N/A	7	N/A

01.07.2015