

Lang[®]

ELECTRIC HALF SIZE COMPUTERIZED CONVECTION OVEN

ECOHC2/3VCN

ECOHC2/4VCN

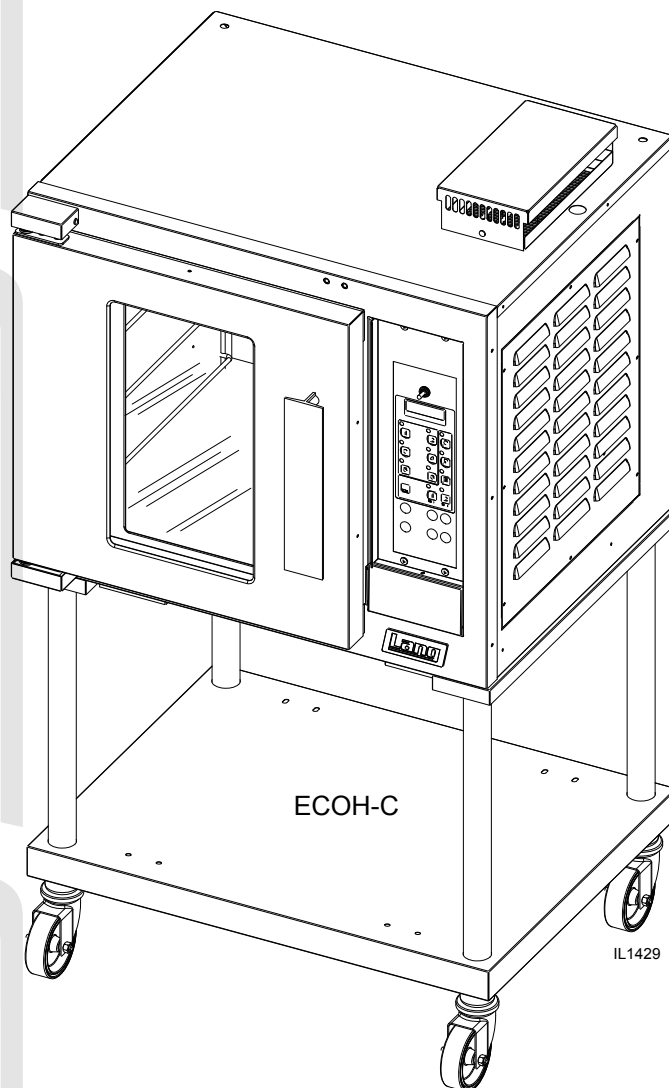
ECOHC208CNF

ECOHC208VCN

ECOHC240VCN

ECOHC2/4CECN

ECOHC480VCN



Installation and Operation Instructions

2M-W493 Rev. G 7/13/15

SAFETY SYMBOL



These symbols are intended to alert the user to the presence of important operating and maintenance instructions in the manual accompanying the appliance.

FOR YOUR SAFETY

DO NOT STORE OR USE GASOLINE OR OTHER FLAMMABLE VAPORS AND LIQUIDS IN THE VICINTIY OF THIS OR ANY OTHER APPLIANCE.

POST IN PROMINENT LOCATION

INSTRUCTIONS TO BE FOLLOWED IN THE EVENT USER SMELLS GAS. THIS INFORMATION SHALL BE OBTAINED BY CONSULTING YOUR LOCAL GAS SUPPLIER. AS A MINIMUM, TURN OFF THE GAS AND CALL YOUR GAS COMPANY AND YOUR AUTHORIZED SERVICE AGENT. EVACUATE ALL PERSONNEL FROM THE AREA.

WARNING

IMPROPER INSTALLATION, ADJUSTMENT, ALTERATION, SERVICE OR MAINTENANCE CAN CAUSE PROPERTY DAMAGE, INJURY OR DEATH. READ THE INSTALLATION, OPERATION & MAINTENANCE INSTRUCTIONS THOROUGHLY BEFORE INSTALLING OR SERVICING THIS EQUIPMENT.



WARNING
RISK OF FIRE OR ELECTRIC SHOCK
DO NOT OPEN



WARNING, TO REDUCE THE RISK OF ELECTRICAL SHOCK, DO NOT REMOVE CONTROL PANEL. NO USER-SERVICABLE PARTS INSIDE. REPAIRS SHOULD BE DONE BY AUTHORIZED SERVICE PERSONNEL ONLY.

NOTICE

Using any part other than genuine Lang factory supplied parts relieves the manufacturer of all liability.

Lang reserves the right to change specifications and product design without notice. Such revisions do not entitle the buyer to corresponding changes, improvements, additions or replacements for previously purchased equipment.

Due to periodic changes in designs, methods, procedures, policies and regulations, the specifications contained in this sheet are subject to change without notice. While Lang exercises good faith efforts to provide information that is accurate, we are not responsible for errors or omissions in information provided or conclusions reached as a result of using the specifications. By using the information provided, the user assumes all risks in connection with such use.

MAINTENANCE AND REPAIRS

Contact your local dealer for service or required maintenance. Please record the model number, serial number, voltage and purchase & Installation Information in the area below and have it ready when you call to ensure a faster service.

Model No.: _____

Purchased From: _____

Serial No.: _____

Location: _____

Voltage: _____

Purchase Date: _____

1-Phase or 3 Phase: _____

Installed Date: _____



PROBLEMS, QUESTIONS or CONCERNS

Before you proceed consult you authorized Lang service agent directory

or

Call the Lang Technical Service & Parts Department at 314-678-6315

TABLE OF CONTENTS

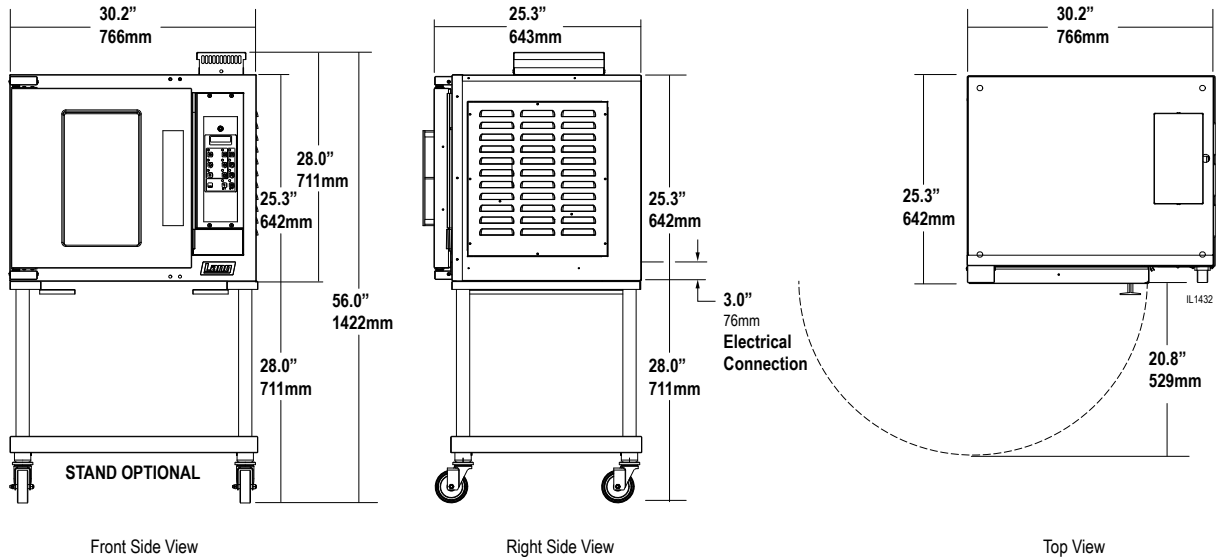
Specifications	4
Equipment Description	5
Unpacking	6
Installation	
Leg Installation	7
Stacking the Oven	7
Vent Cap Installation	8
Ventilation & Clearence	9
Electrical Connection	9
Oven Voltage	9
Reversing the door	10
Initial Start-Up	
Pre-Power On	11
Power On	11
General Operation & Programming	
Control Panel	12
Status Display	13
Control Panel Buttons	13
Loading	13
Pace Timers	14
Program Enable Buttons	14
Shelf Position Buttons	14
Cleaning	14
Troubleshooting	
Symptoms & Possible Causes	15
Wiring Diagram	16 - 18
Exploded View & Parts List	20 - 26

NOTICE

Service on this or any other Lang appliance must be performed by qualified personnel only. Consult your Lang Authorized Service Agent Directory. You can call our toll free number 314-678-6315 or visit our website WWW.LANGWORLD.COM for the service agent nearest you.

SPECIFICATIONS

Model	Height x Width x Depth (without optional stand)	Clearance from combustible surface	Weight		
			Installed	Shipping	Freight Class
ECOH-C	25.3" x 30.2" x 25.3" 642mm x 766mm x 643mm	Side:6", Back: 6", Floor: 6"	185 lbs. (84 kg)	225lbs (102 kg)	85



UTILITY REQUIREMENTS

Model Number	Volts	Hz	Motor Amps	Phase	KW
ECOH-2/4CECN	240/415	50/60	33	1/3PH-4 Wire	7.8
ECOH-C2/3VCN	220/380	50/60	3.3	1/3PH-4 Wire	6.7
ECOH-C2/4VCN	240/415	50/60	1.2	1/3	7.8
ECOH-C208CNF	208	60	3.3	1/3	5.6
ECOH-C208VCN	208	60	3.3	1/3	7.8
ECOH-C240VCN	240	60	2.6	1/3	7.8

Model Number	Amps 1PH	Wire 1PH	L1	L2	L3	Wire 3PH
ECOH-2/4CECN			11.8	10.4	10.4	12
ECOH-C2/3VCN	30	10	11	10	10	12
ECOH-C2/4VCN	32.5	8	10.4	10.4	11.6	12
ECOH-C208CNF	27	10	12	23	15	10
ECOH-C208VCN	38	8	23	21	23	10
ECOH-C240VCN	33	8	20	18	20	12

EQUIPMENT DESCRIPTION

Exterior Construction

The Top, Front, Back, and Sides are constructed of stainless steel with an aluminized bottom.

The oven exterior dimensions are:

30" (76.2 cm) Wide,
25.25" (74.3 cm) High,
26.5" (67.31 cm) Deep.

The oven door comes standard with a high temperature insulated window equipped with a polycarbonate handle.

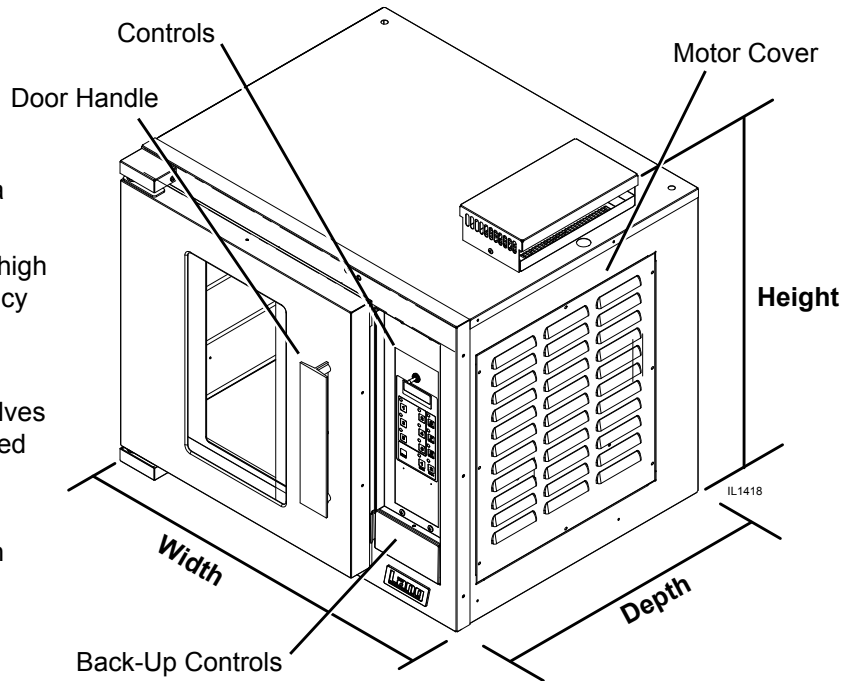
The oven cavity is insulated with high temperature insulation for efficiency and reduced heat loss.

Interior Construction

The oven is designed for five shelves and comes with five Chrome Plated Racks.

The interior cooking chamber is constructed of stainless steel with dimensions of:

15" (38.1 cm) Wide,
20" (50.84 cm) High,
21" (53.38 cm) Deep.



Operation

The ECOH oven is a forced air convection oven with a vented oven cavity.

The air is driven by a 1/3 HP fan motor.

Controls

Pre-Programmable Product Selections

Independent Shelf Timers for each Shelf.

Shelf Compensation Timing for uniform baking.

Technical

Oven operates as shipped on either 208 or 240-volt (single or three phase), or 480-volt (three phase).

The oven can be shipped with a Power Cord and Plug attached, but must be specified upon ordering (*part number is listed in the Parts portion of this manual*).

Floor space required is 42" (106.68cm) Wide, 32.5" (82.55cm) Deep.

The oven weighs approximately 225 lb. (102.5 Kilograms).

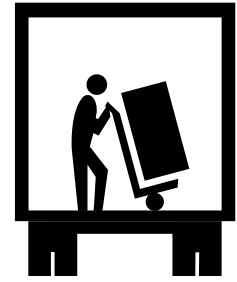
The ovens are stackable, stacking kit available upon request.

NOTICE The data plate is on the right side of the oven below the removable panel. The oven voltage, wattage, serial number, wire size, and clearance specifications are on the data plate. This information should be carefully read and understood before proceeding with the installation.

UNPACKING

Receiving the Oven

Upon receipt, check for freight damage, both visible and concealed. Visible damage should be noted on the freight bill at the time of delivery and signed by the carrier's agent. Concealed loss or damage means it does not become apparent until the merchandise has been unpacked. If concealed loss or damage is discovered upon unpacking, make a written request for inspection by the carrier's agent within 15 days of delivery. All packing material should be kept for inspection. Do not return damaged merchandise to Star Manufacturing Company. File your claim with the carrier.



Location

Prior to un-crating, move the oven as near to its intended location as practical. The crating will help protect the unit from the physical damage normally associated with moving it through hallways and doorways.

Un-crating

The oven will arrive completely assembled inside a wood frame and strapped to a skid. Cut the straps and remove the wood frame.

The oven can now be removed from the skid.



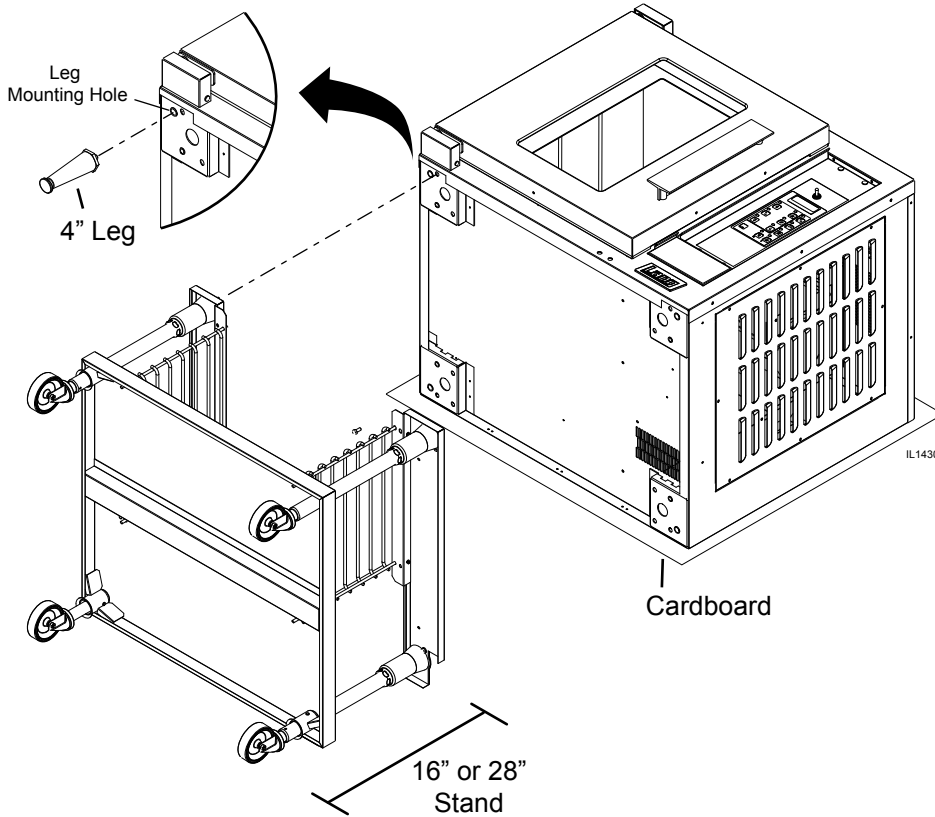
CAUTION

THE UNIT IS EXTREMELY HEAVY. FOR SAFE HANDLING, INSTALLER SHOULD OBTAIN HELP AS NEEDED, OR EMPLOY APPROPRIATE MATERIALS HANDLING EQUIPMENT (SUCH AS A FORKLIFT, DOLLY, OR PALLET JACK) TO REMOVE THE UNIT FROM THE SKID AND MOVE IT TO THE PLACE OF INSTALLATION.

ANY STAND, COUNTER OR OTHER DEVICE ON WHICH OVEN WILL BE LOCATED MUST BE DESIGNED TO SUPPORT THE WEIGHT OF THE OVEN.

SHIPPING STRAPS ARE UNDER TENSION AND CAN SNAP BACK WHEN CUT.

INSTALLATION



Leg Installation

4" legs are available for single countertop installations. Single and double deck installations require 16" or 28" stand installation, casters may also be used in certain situations.

To install the 4" legs, place some cardboard on the floor and gently tip the unit onto its back. Fasten the four, 4" legs into the threaded holes located on the bottom of the unit. Gently lift the oven into its operating position.

16" & 28" stand installation, after following the assembly instructions that were provided with the stand, gently lower unit on to some cardboard as shown here. Align the stand with the bottom of the unit and secure with the hardware provided. With assistance, or carefully raise the unit to its vertical position.

Stacking the Ovens

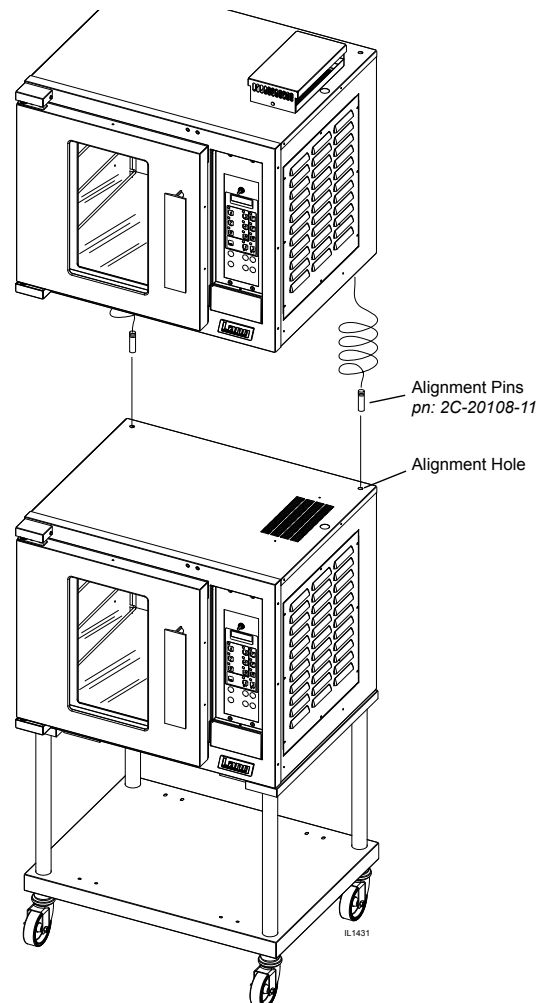
Two alignment pins (pn:2C-20108-11) are needed if you intend on stacking two ECOH-C on each other as shown. These pins must be requested at the time of purchase, or call your Lang authorized service agent, or Lang parts department at 314-678-6315.

Having completed the previous step remove any and all button plugs from the lower unit, so the upper unit will lay properly.

Lay the upper unit on its back and screw the alignment pins into the two rear holes.

With assistance lift the upper unit onto the lower unit, being certain that the alignment pins go into the alignment holes, as shown here.

NOTE: Each unit must have separate electrical connections



INSTALLATION continued

Vent Cap

Certain units come equipped with a vent cap assembly, this gets installed on top of the unit as shown here. If your unit does not come equipped with this feature call the Lang parts department at 1-800-438-5264 to inquire.

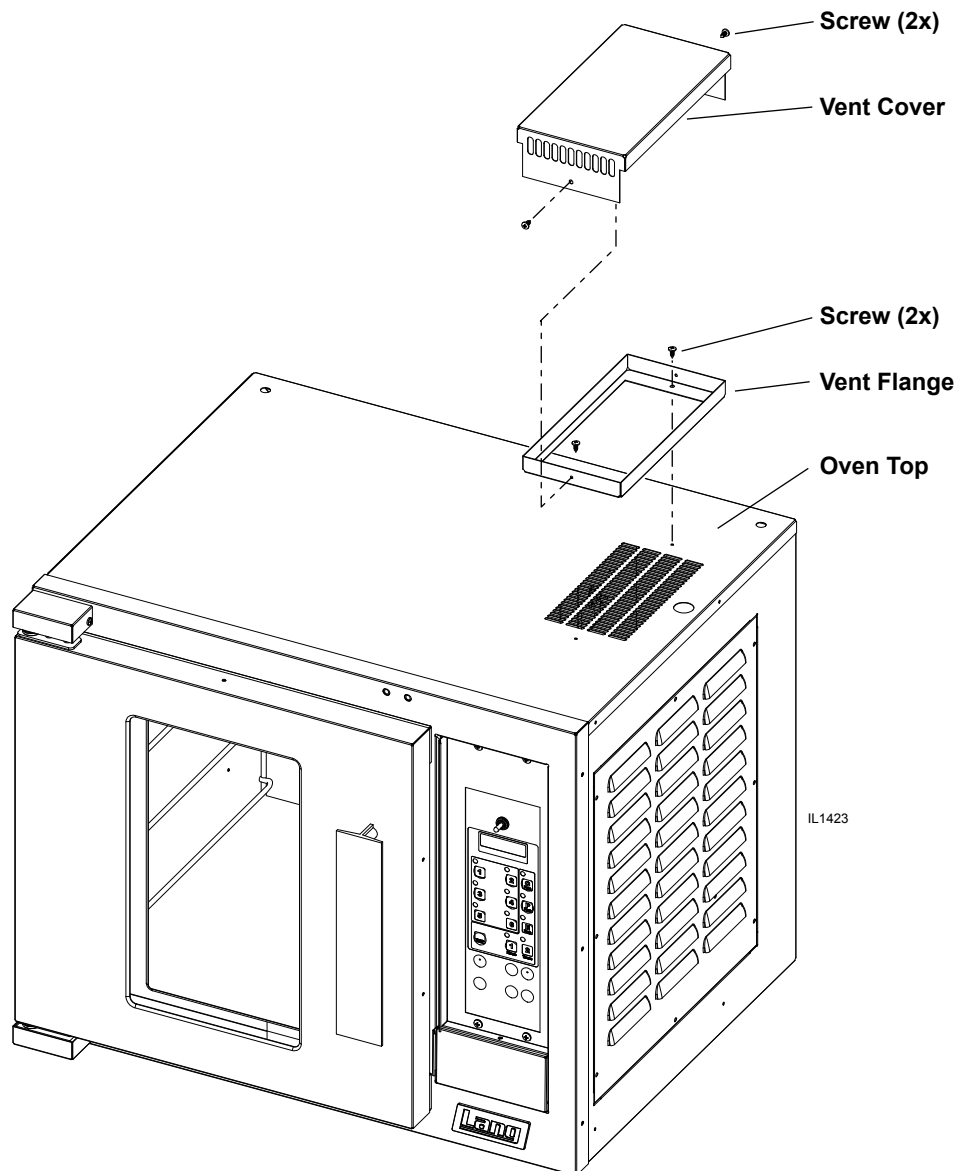
This vent allows:

heat to escape from the electronic controls and motor assembly more freely, allowing cooler air to enter through the side.

reduces the possibility of blocking the vent or having objects or moisture falling into the controls & motor compartment possibly damaging sensitive electronic components.

Install Vent Cap

1. Unit should be turned off.
2. Align vent flange with mounting holes on top of the unit as shown here.
3. Secure in place with hardware provided.
4. Align the mounting holes on the vent cover, with the holes on the vent flange, and secure with hardware provided.



Vent Cap Assembly Installation, standard with certain models

INSTALLATION continued

Ventilation and Clearances

Standard minimum clearance from combustible construction is as follows.

4" from side

4" from back

6" from floor

- These ovens may be set directly, without legs, on a curbed base or non-combustible floor.
- If the oven is set without legs on a non-combustible floor or a curbed base, maintain a 4-inch back clearance.
- If the oven is set directly against a non-combustible back wall, maintain a 6-inch clearance to the floor.
- Do not install the oven closer than 12 inches from an uncontrolled heat source (char broiler etc.) on the right side.
- Keep the area free & clear of combustible material, and do not obstruct the flow of combustion or ventilation air.
- The installation of any components such as a vent hood, grease extractors, and/or fire extinguisher systems, must conform to the applicable nationally recognized installation standards.

NOTICE **The installation of any components such as a vent hood, grease extractors, fire extinguisher systems, must conform to their applicable National, State and locally recognized installation standards.**

Electrical Connection

The electrical connection must be made in accordance with local codes or in the absence of local codes with NFPA No. 70 latest edition (in Canada use: CSA STD. C22.1).

The electrical service entrance is provided by a 1 1/4-inch knockout at the oven back directly behind the control compartment. A grounding lug is provided at the rear service entrance.

The ECOH-C-VCN can be purchased with a Cord & Plug kit (*Part number 9Q-ECOH-CK*). This kit includes a 48" cord with a NEMA L15-30P plug. In stacked situations each units needs to have separate cord & plug assemblies.

Oven Voltage

The Lang Model ECOH ovens can be operated on 208, 240-volt (single or three phase), or 480-volt (three phase only) source. The Amp draw, KW rating, and phasing can be found in the specification section of this manual found on page 4.



WARNING

THIS APPLIANCE MUST BE GROUNDED AT THE TERMINAL PROVIDED. FAILURE TO GROUND THE APPLIANCE COULD RESULT IN ELECTROCUTION AND DEATH.

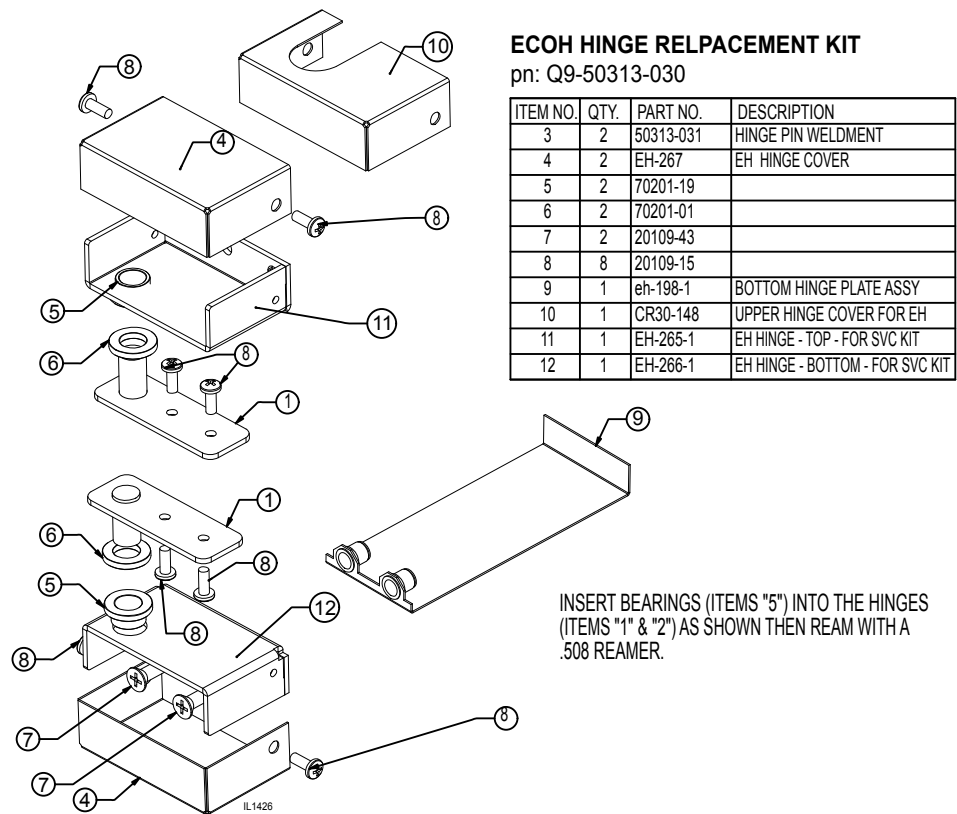


WARNING

INSTALLATION OF THE UNIT MUST BE DONE BY PERSONNEL QUALIFIED TO WORK WITH ELECTRICITY AND PLUMBING. IMPROPER INSTALLATION CAN CAUSE INJURY TO PERSONNEL AND/OR DAMAGE TO EQUIPMENT. UNIT MUST BE INSTALLED IN ACCORDANCE WITH ALL APPLICABLE CODES.

Reversing the door

1. Disconnect oven from power.
2. Remove the top and bottom door hinge covers (4) by removing the two 10-32 Phillip head screws (8).
3. Remove the top door hinge bracket (1) from the oven by removing the two 1/4-20 Phillip head screws (7). The hinge should now slide off of the door pin (this will now be your right hand lower hinge)
4. Lift the door off the bottom pin and set aside.
5. Remove the bottom door hinge bracket (2) by removing the two 1/4-20 Phillip head screws (7) (this will now be your upper right hand hinge).
6. Remove the lower hinge mounting plate (9) by pulling it from behind the leg pad adapter on the bottom of the oven.
7. Remove the two Phillips head screws in the bottom right corner of the oven, where the new hinge will be placed.
8. Slide the hinge mounting plate (9) into place and mount the hinge bracket (this should be your old upper hinge) using two 1/4-20 (7) Phillips head screws.
9. Remove the two Phillips head screws in the upper right corner of the oven where the new hinge will be placed.
10. Rotate the door 180° and slide the door pin into the bottom hinge bracket.
11. Slide the upper door hinge (1) onto the upper door pin and then screw into place using two 1/4-20 Phillip head screws.
12. Place the top and bottom door hinge covers (4) back on the oven using two 10-32 Phillip head screws (8).



INITIAL START UP

Pre-Power On

After the oven is installed and connected to power, prior to turning on, verify the following

- The door opens and closes freely
- All racks are in the oven correctly
- All packing materials have been removed from the inside of the oven

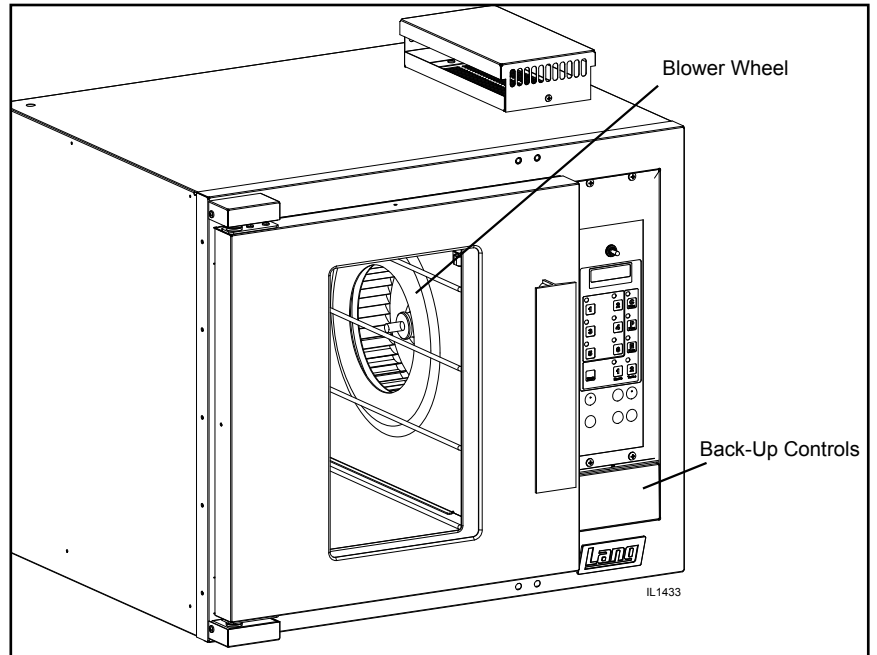
Power On

Once the oven has been turned "ON" verify that the blower wheel is moving freely in a clockwise position and that the elements are heating properly.

Switch the back-up controls on and make certain it can run the unit.

Confirm that the thermostat knob in the back-up controls is move freely.

Switch the back-up controls OFF to take it out of back-up mode.



NOTICE

During the first few hours of operation you may notice a small amount of smoke coming from the oven, and a faint odor from the smoke. This is normal for a new unit and will disappear after the first few hours of use.

General Operation & Programming

Convection ovens constantly circulate air over and around the product. This strips away the thin layer of moisture and cool air from around the product allowing heat to penetrate more quickly.

Always weigh your product. This will give you a more consistent size, color and quality.

Check the product near the end of the initial cooking.

Do not open the oven door during baking, as this will change the baking characteristics of the oven and make it difficult to determine a final program.

If the product is overdone on the outside and underdone on the inside, reduce the baking temperature.

If the product is pulling away from the edge of the pan, the temperature is too high or the cooking time too long.

A convection oven is a mechanical piece of equipment. The same control settings will always give the same results. If the results vary, problems may be because of changes in the product preparation.

Control Panel

The Control panel consists of the following items. Detailed operational descriptions are given later this section.

Power Switch: Turns the oven on and off

Status Display: Displays the oven status (preheat, ready, done) and is the count down timer.

Shelf Timers: Numbered 1 to 6, these buttons represent different shelf positions.

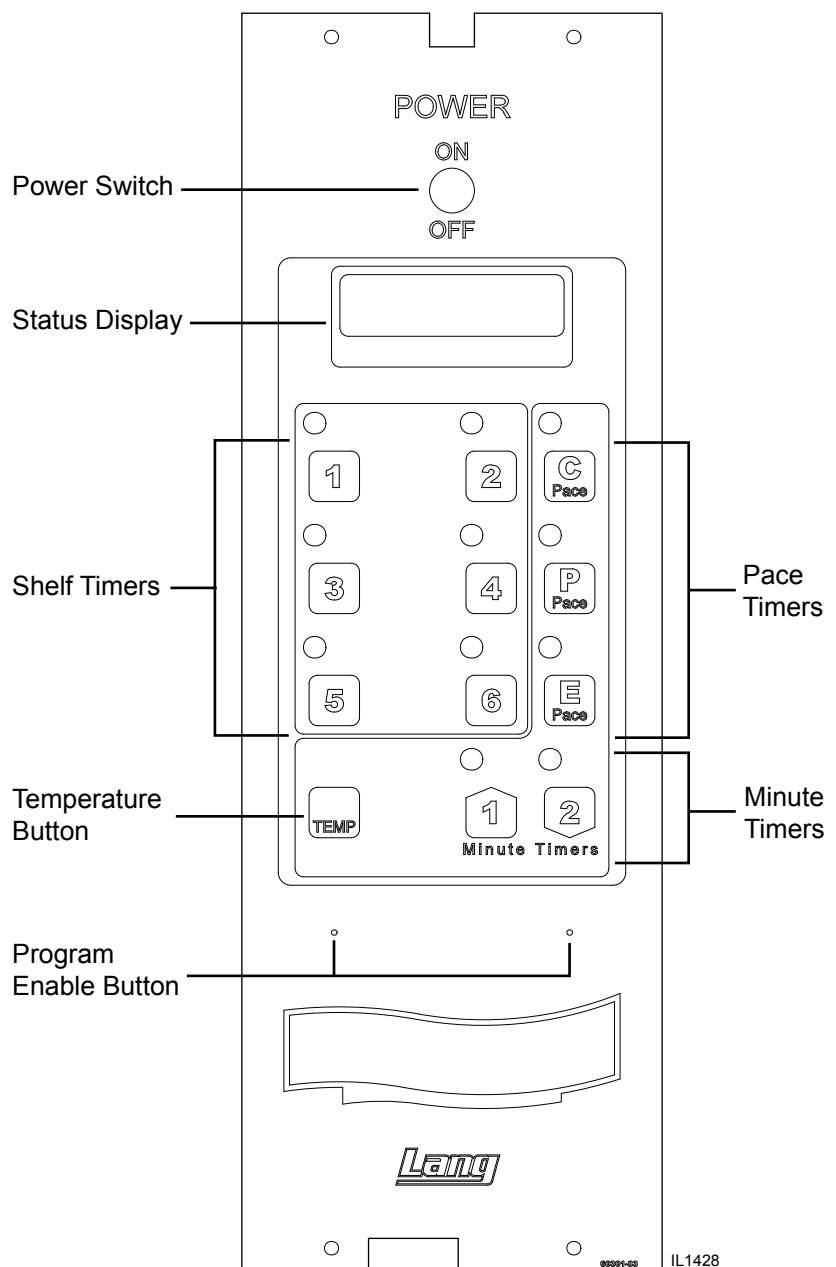
Button #	Shelf Position
1	Top Left
2	Top Right
3	Middle Left
4	Middle Right
5	Bottom Left
6	Bottom Right

Pace Timers: Labeled C, P, and E these buttons are adjustable from one to thirty minutes.

Minute Timers: There are two "Minute" timers. "1" is programmed for one minute, "2" is programmed for two minutes.

Temp Button: When pressed this button will display the temperature of the oven.

Program Enable Buttons: These are "hidden" buttons that allow the times of the shelf position buttons to be set.



General Operation & Programming cont.

Status Display

The Status Display informs the operator of the oven's status.

Preht	Stands for PREHEAT . The oven has been turned on and is adjusting to the preprogrammed temperature (310°F, 154°C).
Ready	The oven has reached the preset temperature and is waiting for product to be loaded into the oven.
Cool	The oven's internal temperature is below what is programmed.
Hot	The oven's internal temperature is above what is programmed.
Done	The time has expired for that program and the product is finished.
Help	There is a fault in the control system; the computer will not operate until service is performed.

Control Panel Buttons

Shelf Buttons	Place the product into the oven on one of the six shelf positions. Close the oven doors. Press the shelf position button that corresponds to the shelf position once for "C" product, twice for "P" product, three times for "E" product, or four times for off. A beeper will sound once the product is done and "done" will be displayed. Press the flashing shelf to cancel the beeper.
Minute and Pace Timers	The "1" button is preset to one minute, the "2" button is preset to two minutes, and the "Pace" buttons are adjustable from one to thirty minutes. Press the button once to start the timer. The display will read out the programmed time and then revert to the previous read out. The timers will countdown internally. Time remaining can be recalled by pressing the button again.
Canceling a timer	Any timer can be cancelled at any time. Press and hold the timer to be cancelled until "cancel" appears in the display.

Loading

Here are some things to remember when loading your oven.

- When loading and unloading the oven, stage products and racks so the oven door is opened for the least amount of time.
- Be sure that racks are level within the oven.
- Bent or warped pans can greatly affect the evenness of the cook or bake.
- If using baker's parchment, be sure the parchment does not blow over the product. This will create an uneven bake.
- Load each shelf evenly. Spaces should be maintained equally between the pan and oven walls, front and back.
- Do not overload pan's this will create an uneven bake.
- For best baking results, load the oven from the center out during random loading.



ALWAYS KEEP THE AREA NEAR THE APPLIANCE FREE FROM COMBUSTIBLE MATERIALS.

KEEP FLOOR IN FRONT OF EQUIPMENT CLEAN AND DRY. IF SPILLS OCCUR, CLEAN IMMEDIATELY, TO AVOID THE DANGER OF SLIPS OR FALLS.

General Operation & Programming cont.

Pace Timers

The pace timers can be set at any time. Press and hold the "PACE" button for three seconds. The display will read out the set time then begin to flash. Press the "1" minute button to increase the time, or the "2" minute button to decrease the time. Once the corrected time is set, press and hold the "PACE" button for three seconds to exit the programming mode.

Program Enable Buttons

The control cannot be put into the programming mode if any of the timers are running. The two blue dots above the "CINNABON" logo are the program enable buttons. Press the left dot then the right dot within 3 seconds to put the control into a programming mode. Once the shelf position buttons are set, press the left dot then the right dot within 3 seconds to exit the programming mode. There will be no beeper sound when the buttons are pressed.

Shelf Position Buttons

Put the control into the programming mode. Press the shelf button to be adjusted once for "C" product, twice for "P" product, or three times for "E" product. The display will read out "CURRENT SET TIME" then begin to flash. Press the one-minute timer button to increase the time, or the two-minute timer button to decrease the time. Once the correct time is set move on to another shelf position button or exit the programming mode.

MAINTENANCE

- Oven interiors should be wiped down daily and thoroughly cleaned weekly using warm water and mild detergent. **DO NOT use caustic cleaners.**
- The appliance should be thoroughly checked at six-monthly intervals by a qualified technician (heating unit, mechanical stability, corrosion...) with particular emphasis on all control and safety devices.

CLEANING

- Always start with a cold oven.
- The stainless exterior can easily be cleaned using stainless steel cleaner.
- Always follow the cleaner manufacturer's instructions when using any cleaner.
- Care should be taken to prevent caustic cleaning compounds from coming in contact with the fan wheel.
- The oven racks, rack slides, may be cleaned outside the oven cavity using oven cleaner.
- The oven interior should only be cleaned using a mild soap and a non metal scouring pad. **DO NOT use caustic cleaners.**
- Always apply stainless steel cleaners when the oven is cold and rub in the direction of the metal's grain.



WARNING

KEEP WATER AND SOLUTIONS OUT OF CONTROLS. NEVER SPRAY OR HOSE CONTROL CONSOLE, ELECTRICAL CONNECTIONS, ETC.



CAUTION

MOST CLEANERS ARE HARMFUL TO THE SKIN, EYES, MUCOUS MEMBRANES AND CLOTHING. PRECAUTIONS SHOULD BE TAKEN TO WEAR RUBBER GLOVES, GOGGLES OR FACE SHIELD AND PROTECTIVE CLOTHING.

CAREFULLY READ THE WARNING AND FOLLOW THE DIRECTIONS ON THE LABEL OF THE CLEANER TO BE USED.

NEVER LEAVE A CHLORINE SANITIZER IN CONTACT WITH STAINLESS STEEL SURFACES LONGER THAN 10 MINUTES. LONGER CONTACT CAN CAUSE CORROSION.

Troubleshooting

Symptoms & Possible Causes

The following are charts of Symptoms and Possible Causes to aid in diagnosing faults with your unit. Refer to the symptoms column to locate the type of failure then to the Possible Cause for the items to be checked. To test for a possible cause refer to test to identify test procedures. Test indicated with an “*” should be done by a Lang factory authorized service representative.

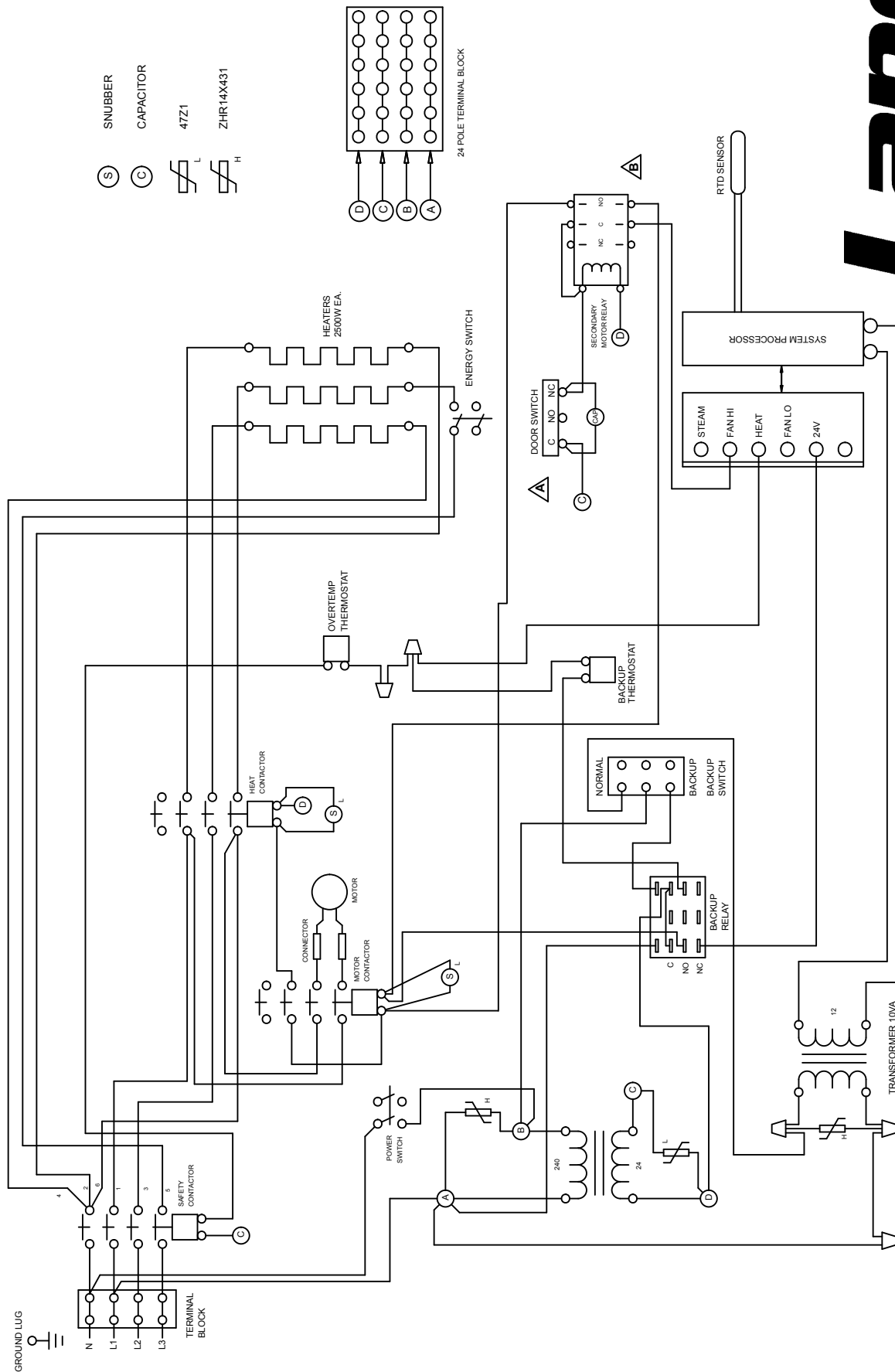
Symptoms	Possible Cause	Possible Cause	Test	
Power indicator is not lit	No power to cord outlet	Product is cooked too long	No test available, operational condition	
	Oven unplugged from outlet		Failed Probe	Check probe for proper resistance*
	Failed Power cord or plug	Failed Circuit board		Confirm that Circuit board is getting correct voltage and putting out correct voltage*
	Failed power switch			Failed Transformer
	Failed indicator light	Failed Contactor	Remove the wires from the contactor coil and check for continuity across the contactor coil connection*	
Oven will not heat	Power Switch is not “ON”		Ensure the contactor moveable points move freely up and down*	
	Failed Transformer		Failed Motor	Confirm that motor is getting correct voltage*
	Failed Probe			Failed or disconnected safety thermostat
	Failed Circuit board		Failed Element	
	Failed Contactor			
	Failed Over-temperature Thermostat			
Failed Element				
Oven motor will not run	Power Switch is not “ON”	Failed Motor	Confirm that motor is getting correct voltage*	
	Failed Transformer		Failed or disconnected safety thermostat	Check across the thermostat connectors for continuity*
	Failed Contactor	Failed Element		Confirm that Elements are getting correct voltage and have continuity*
	Failed Motor			
Product burning	Product is cooked too long			
	Failed Probe			
	Failed Circuit board			
Product is under done	Product is not cooked long enough			
	Failed Probe			
	Failed Circuit board			

NOTICE If an item on the list is followed by an asterisk (*), the work should be done by a Lang factory authorized service representative.

 **CAUTION** USE OF ANY REPLACEMENT PARTS OTHER THAN THOSE SUPPLIED BY LANG OR THEIR AUTHORIZED DISTRIBUTORS CAN CAUSE BODILY INJURY TO THE OPERATOR AND DAMAGE TO THE EQUIPMENT AND WILL VOID ALL WARRANTIES.

NOTICE Service on this or any other Lang appliance must be performed by qualified personnel only. Consult your Lang Authorized Service Agent Directory. You can call our toll free number 314-678-6315 or visit our website WWW.LANGWORLD.COM for the service agent nearest you.

 **WARNING** BOTH HIGH AND LOW VOLTAGES ARE PRESENT INSIDE THIS APPLIANCE WHEN THE UNIT IS PLUGGED/WIRED INTO A LIVE RECEPTACLE. BEFORE REPLACING ANY PARTS, DISCONNECT THE UNIT FROM THE ELECTRIC POWER SUPPLY.



- (S) SNUBBER
- (C) CAPACITOR
- 47Z1
- ZHR14X431



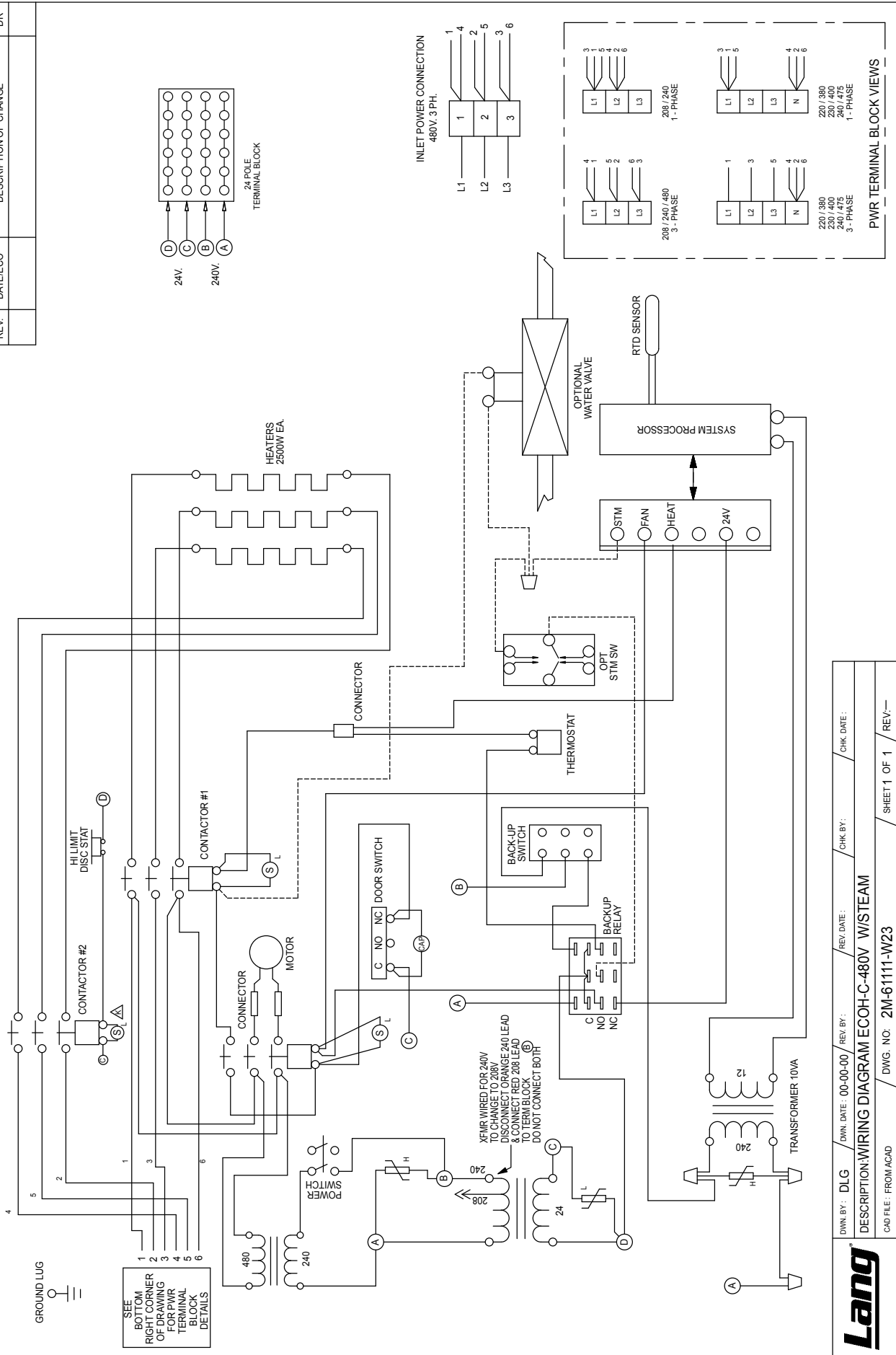
7-23-08

Rev B

2M-61111-103-CE

MODELS:
 ECOH-2/4CECN Electric Half Size Convection Oven

REVISONS		DESCRIPTION OF CHANGE		DR	
REV.	DATE/ECO				



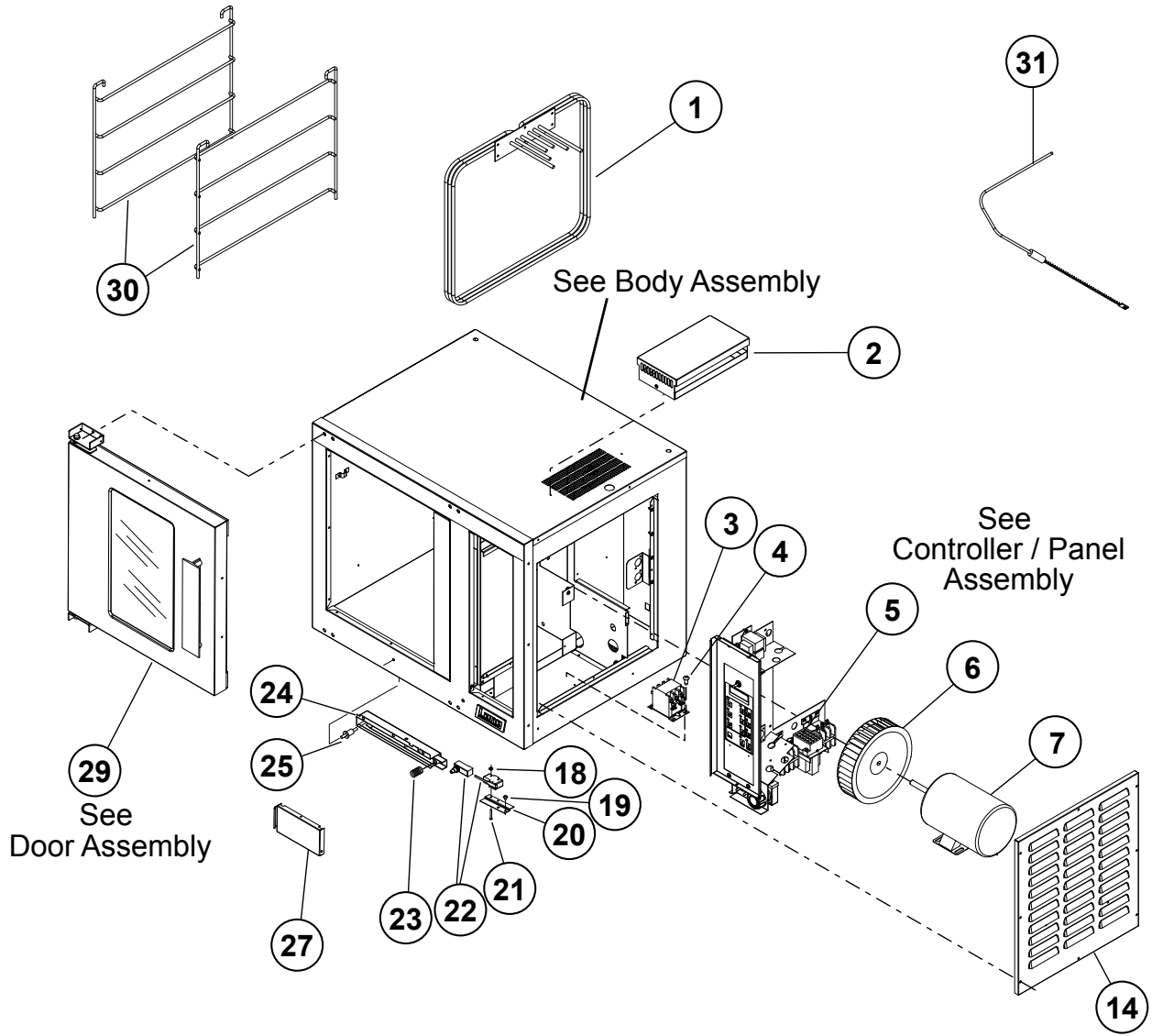
Lang

DWG. NO. 2M-61111-W23

DESCRIPTION WIRING DIAGRAM ECOH-C-480V W/STEAM

DWG. DATE: 00-00-00 / REV. DATE: / CHK. BY: /

CAD FILE: FROM ACAD / SHEET 1 OF 1 / REV:--



ECOH-C Complete Assembly

Lang[®]

SK2330

Rev. B 1/24/14

PARTS LIST

July 13, 2015, Rev G

Model No: ECOH-C2/3VCN, ECOH-C2/4VCN, ECOH-C208CNF, ECOH-C208VCN, ECOH-C240VCN, ECOH-2/4CECN

Commercial Half Size Economy Convection Oven

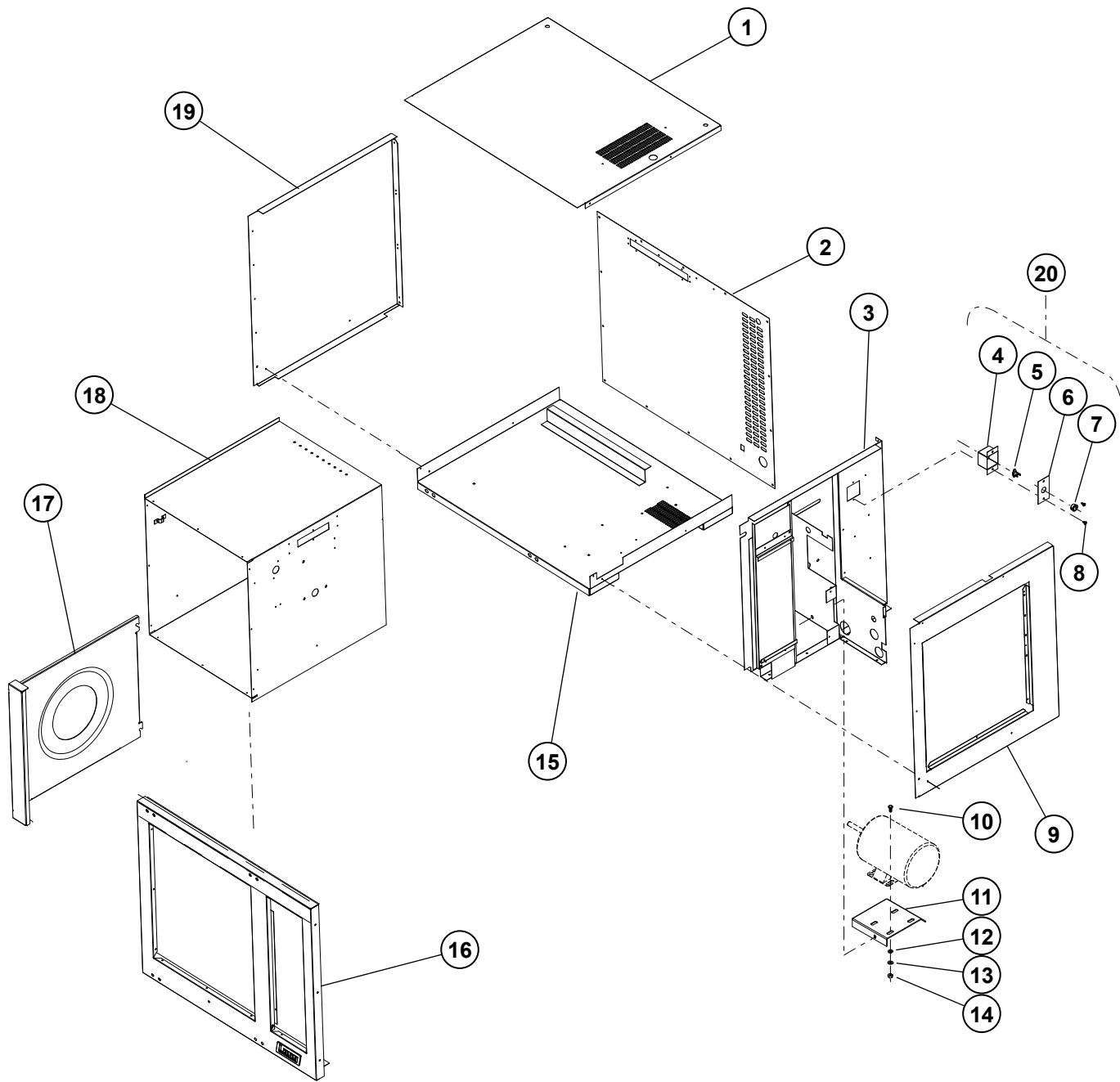
Key Number	Part Number	Qty Per	Description	
1	2N-11090-20	1	ELMNT EHS 208V 7.5KW	ECOH-C208VCN
	2N-11090-23	1	ELMNT EHS OVEN 208VAC 5.0	ECOH-C208CNF
	2N-11090-21	1	ELMNT EHS 240V 7.5KW	ECOH-C2/3VCN, ECOH-C2/4VCN, ECOH-C240VCN, ECOH-2/4CECN
	2N-11090-22	1	ELE EHS OVN 480VAC 7.5KW	ECOH-C480VAC
2	Q9-EH-623-1	1	VENT CAP ASSY - EHS	ECOH-C208CNF, ECOH-C208/240VCN (UNITS MFG BEFORE 2/8/2008)
3	2E-30700-06	3	CONTC 3POLE 35A, 24VAC 50	ECOH-C2/3VCN, ECOH-C2/4VCN, ECOHC208CNF, ECOH-C208VCN, ECOH-C240VCN
4	2C-20102-06	6	SCRW PHD ST 8-32X.375	ECOH-C2/3VCN, ECOH-C2/4VCN, ECOHC208CNF, ECOH-C208VCN, ECOH-C240VCN
5	Q9-EHPLMDR-C	1	PNL EH 208/240V CINNABON	ALL
	Q9-EHPLMDR-HCE	1	PNL EH 220/380/240/415 CE	ECOH-2/4CECN
6	2U-71500-06	1	BLOWER WHEEL EHS OVEN	ALL
7	2U-30200-12	1	MTR 1/3HP 115/208-240 1PH	ECOH-C2/3VCN, ECOH-C208VCN
	2U-30200-17	1	MTR 1/3HP208/204V1PH2SPD	ECOH-C208CNF
	2U-30200-16	1	MTR 1/3HP 460V/1/60HZ 2SP	ECOH-C480VAC
14	Q9-60102-1368		MOTOR COVER EH (EH-141) & HRDW	ALL
18	2C-20301-10	2	NUT HEX 6-32 PLTD	ALL
19	2C-20101-65	2	SCRW MS PLT 10-32 X .25 THD	ALL
20	Q9-EH-356	1	SWITCH BRACKET	ALL
	Q9-EH-356-2	1	DOOR SWITCH BRACKET - CE	ECOH-2/4CECN
21	2C-20101-17	2	SCRW RND MS 6-32X1 PLTD	ALL
22	Q9-EH-363	1	SWITCH ARM, MICRO	ALL
23	2P-51001-12	1	SPRING COMPRSN.665ID X 1.4 LONG	ALL
24	Q9-EH-250	1	WELD SWITCH ARM	ALL
25	Q9-EH-350-W1	1	SWITCH PLUNGER - ASSY	ALL
27	Q9-60102-112	1	SWITCH DOOR - ASSY EH	ALL
29	Q9-51100-53	1	CMPL DOOR ASSY EHS/GHS WINDOW	ALL
30	2B-50200-97	2	RACK SLIDE - EHS - MB	ECOH-C2/3VCN, ECOH-C2/4VCN, ECOH-C20CNF, ECOH-C208VCN, ECOH-C240VCN
31	2E-41100-12	1	SENSOR EHS OVEN 450°	ECOH-C2/3VCN, ECOH-C2/4VCN, ECOH-C20CNF, ECOH-C208VCN, ECOH-C240VCN
NI	2B-50200-34	4	RACK HALF SIZE OVENS	ALL
NI	2B-50200-34	5	RACK HALF SIZE OVENS	ECOH-C2/4VCN
NI	2C-20108-01	2	STACKING PINS	
NI	2K-70801-02	2	SNAP BUSH 1 3/8 SB1375-16	ECOH-C2/3VCN
NI	2K-70801-04	8	SNAP BUSH 3/4 SB750-10	
NI	2M-61111-39		WD EHS-C OVEN	ALL
NI	Q9-60102-97	1	DOOR SEAL EH w/ mounting hardware	
NI	2E-30500-15	1	TRM BLOCK 4 POLE 115AMP	ECOH-C2/3VCN, ECOH-C2/4VCN
NI	2E-30701-05	1	RELAY 2POLE 30A 24VAC	ECOH-C2/3VCN, ECOH-C2/4VCN, ECOH-C208CNF, ECOH-C208VCN, ECOH-C240VCN

**IMPORTANT: WHEN ORDERING, SPECIFY VOLTAGE OR TYPE GAS DESIRED
INCLUDE MODEL AND SERIAL NUMBER**

PAGE 1
OF 2

Some items are included for illustrative purposes only and in certain instances may not be available.





ECOH Body Assembly

Lang[®]

SK2325 Rev. B 1/18/2013

PARTS LIST

July 13, 2015, Rev G

Model No: ECOH-C2/3VCN, ECOH-C2/4VCN, ECOH-C208CNF, ECOH-C208VCN, ECOH-C240VCN, ECOH-2/4CECN
BODY PANELS Commercial Half Size Economy Convection Oven

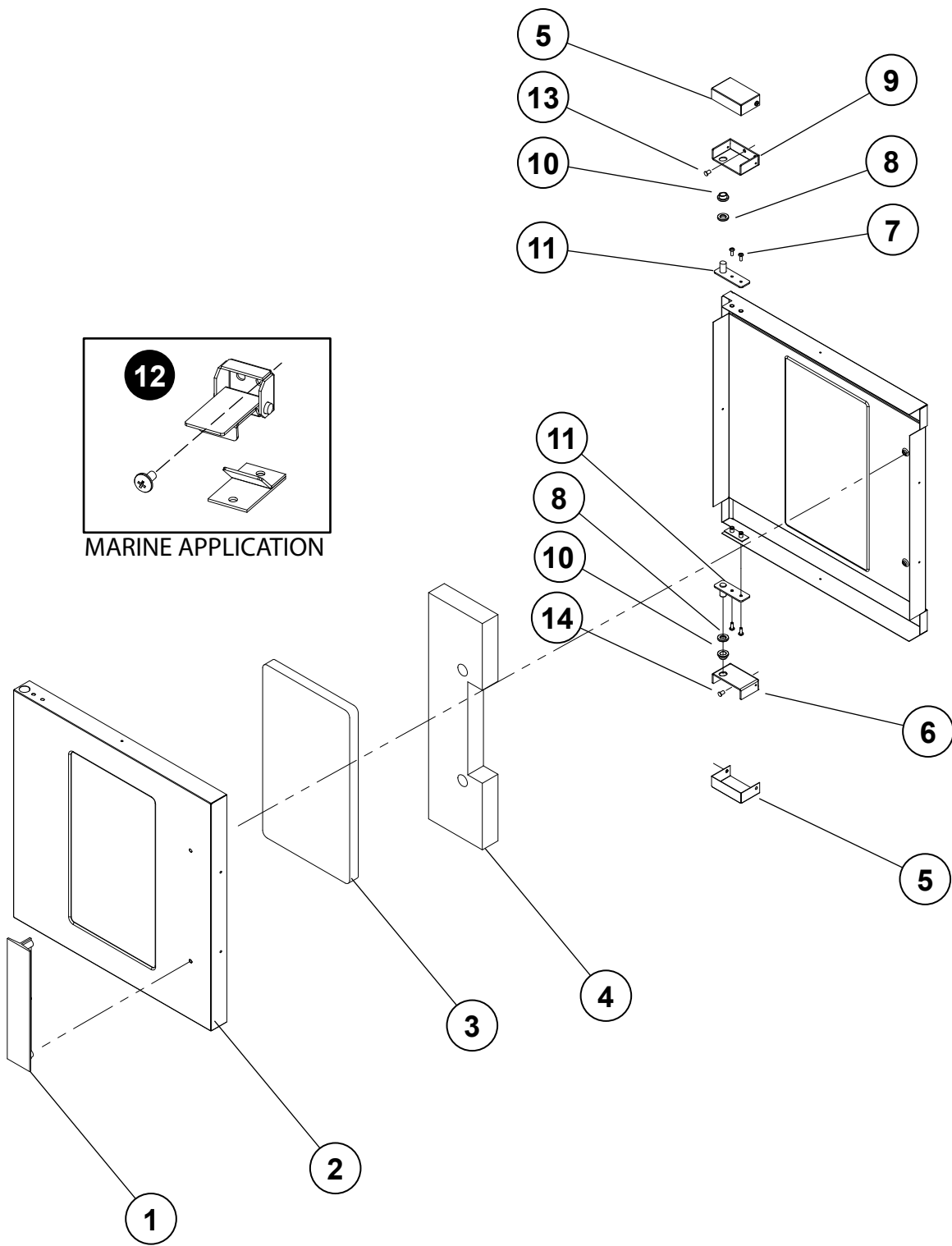
Key Number	Part Number	Qty Per	Description
1	Q9-EH-129-5	1	TOP - BODY W/VENT ALL
2	Q9-60102-1361	1	BODY BACK EH & HRDW ALL
3	Q9-EH-119-2	1	FIREWALL - ASSY ALL
4	Q9-EH-135	1	SAFETY STAT BOX ALL
5	2T-30401-09	1	STAT FXD 500° DEG OPEN ALL
6	Q9-EH-136	1	SAFETY STAT COVER ALL
7	2K-70801-04	1	SNAP BUSH 3/4 SB750-10 BLK ALL
8	2C-20103-02	2	SCRW SM PLT 10 X .5 PHLSL ALL
9	Q9-60102-1364	1	BODY R/H SIDE EH & HRDW ALL
10	2C-20104-41	4	SCRW MACH. 1/4-20X5/8 H/H ALL
11	Q9-EH-209	1	MOTOR MOUNT ALL
12	2C-20202-08	4	WSHR PLT 5/16 LOCK SPLIT ALL
13	2C-20201-09	4	WSHR PLT 5/16 FLAT SAE ALL
14	2C-20301-06	4	NUT HEX 5/16-18 PLTD ALL
15	Q9-EH-104-2	1	BOTTOM SPOT WELD ALL
16	Q9-EH-215-2	1	FRONT - ASSY REVERSIBLE ALL
17	Q9-EH-452-2	1	BAFFLE STD ALL
	Q9-EH-452-3	1	BAFFLE ASSY STEAM STEAM
18	Q9-EH-374-3	1	CAN ASSY STD -[NEW RACK ALL
19	Q9-60102-1365	1	BODY L/H SIDE EH & HRDW ALL
20	Q9-60102-120	1	SAFTEY T-STAT BOX EX ALL

**IMPORTANT: WHEN ORDERING, SPECIFY VOLTAGE OR TYPE GAS DESIRED
 INCLUDE MODEL AND SERIAL NUMBER**

PAGE 1
 OF 1

Some items are included for illustrative purposes only and in certain instances may not be available.





ECOH, RCOH Door Assembly

Lang[®]

SK2321 Rev. A 3/1/2012

PARTS LIST

July 13, 2015, Rev G

Model No: ECOH-C2/3VCN, ECOH-C2/4VCN, ECOH-C208CNF, ECOH-C208VCN, ECOH-C240VCN, ECOH-2/4CECN
Door Assembly Commercial Half Size Economy Convection Oven

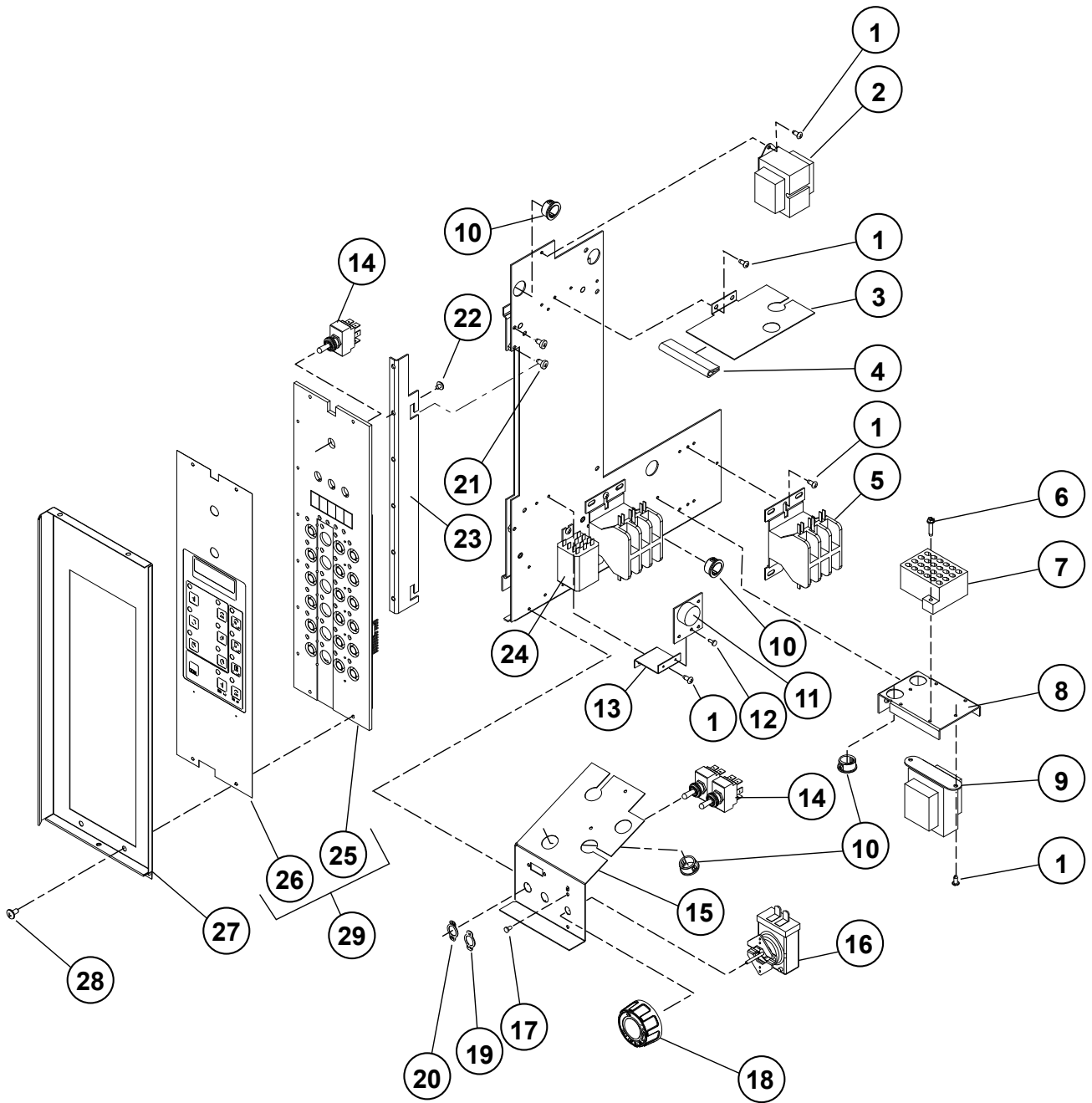
Key Number	Part Number	Qty Per	Description
0	Q9-51100-53	1	COMPLETE DOOR ASSY w/WINDOW ALL
	Q9-F6-423	1	COMPLETE DOOR ASSY w/o WINDOW OPTIONAL
1	2R-50800-12	1	DOOR T HANDLE 11 1/2 LNG ALL
2	Q9-60102-1362	1	OUTER DOOR EH NO/LOGO ALL
3	2Q-71301-04	1	WINDOW ASSY 9-5/8X16-5/8 ALL
4	2H-60106-17	1	INSULATION KIT EHS DOOR - ALL
5	Q9-EH-267	2	HINGE COVER ALL
6	Q9-EH-266	1	HINGE BOTTOM ALL
7	2C-20109-15	4	SCRW PHD MS SS 10-32X1/2 ALL
8	2P-70201-01	2	BRNZBR.505IDX.8750DX.175 ALL
9	Q9-EH-265	1	HINGE TOP ALL
10	2P-70201-19	2	BRNZBRFLN1/2IDX5/8ODX3/8 ALL
11	Q9-50313-031	2	HINGE PIN - WELD ALL
12	N/A	1	DOOR LATCH ASSY

**IMPORTANT: WHEN ORDERING, SPECIFY VOLTAGE OR TYPE GAS DESIRED
 INCLUDE MODEL AND SERIAL NUMBER**

PAGE 1
 OF 1

Some items are included for illustrative purposes only and in certain instances may not be available.





ECOH-C Complete Assembly

Lang[®]

SK2331

Rev. -

11/14/2007

PARTS LIST

July 13, 2015, Rev G

Model No: ECOH-C2/3VCN, ECOH-C2/4VCN, ECOH-C208CNF, ECOH-C208VCN, ECOH-C240VCN, ECOH-2/4CECN
CONTROL PANEL ASSEMBLY Commercial Half Size Economy Convection Oven

Key Number	Part Number	Qty Per	Description
1	2C-20102-08	15	SCRW PHD ST 8-32X.375 ALL
2	2E-31400-12	1	XFRMR 240V/12V 10VA CLASS ALL
	2E-31400-28	1	XFORMR208-240/24VCT 40VA ECOH-2/4CECN
	2E-31400-04	1	XFRMR 480/240VAC 100VA ECOH-C480VCN
3	Q9-EH-513	1	24V TRANSFORMER SHIELD ALL
4	Q9-EH-501	1	TRIMLOCK 3 ALL
5	2E-30700-06	3	CONTC3POLE35A24VAC50/60HZ ALL
	2E-30702-02	3	CONTC 4POLE 24V 25FLA CE ECOH-2/4CECN
6	2C-20102-05	2	SCRW HXHD ST 8-32X.75 ALL
7	2E-30503-01	1	TRM BLOCK 24 POS QK CON ALL
8	Q9-EH-507	1	TERMINAL BLOCK MOUNT ALL
9	2E-31400-07	1	XFORMR120-208-240/24V40VA ALL
9	2E-31400-28	1	XFORMR208-240/24VCT 40VA ECOH-2/4CECN
10	2K-70801-04	4	SNAP BUSH 3/4 SB750-10 ALL
11	2J-40102-17	1	BUZZER BOARD ASSY ALL
12	2C-20103-06	2	SCRW SM PLT 6 X 3/8 PHL ALL
13	Q9-GCCO-355	1	BUZZER BOARD MOUNT ALL
14	2E-30303-06	3	SWT TOG ON-ON DPDT BLK ALL
	2E-30303-19	3	SWT TOG ON-ON DPDT BLK ECOH-2/4CECN
15	Q9-EH-509	1	SWITCH BRACKET ALL
16	2T-30402-27	1	STAT ADJ 450 DEG 48 PILOT ALL
	2T-30402-37	1	STAT ADJ 450 DEG45 PILT ECOH-2/4CECN
17	2C-20101-77	2	SCRW MS PLT 6-32 X .25 ALL
18	Y9-70701-19	1	KNOB ASSY 450o D ALL
	P9-70701-58	1	KNOB ASSY 450° D CELCIUS ECOH-2/4CECN
19	2E-30303-09	1	SWT PLATE HI/LOW ALL
20	2E-30303-05	1	SWT PLATE ON/OFF IND ALL
21	2C-20102-12	7	SCRW PHD ST 10-32X3/8 ALL
22	2C-20101-51	6	SCRW MS PLT 8-32 X .1875 ALL
23	Q9-EH-503	1	FRONT PANEL HOLDER C,P,PP ALL
24	2E-30600-02	1	RELAY 240VAC 3FORMC FLNG ALL
25	Q9-40102-53	1	CIRBD CPU/FRONT PANEL ALL
26	2M-60301-83	1	PANEL LBL PURPLE-CUSTOM ALL
27	Q9-EH-518	1	CONTROL PANEL - C ALL
28	2C-20101-24	4	SCRW MS PLT 10-32 X .375 ALL
29	Q9-40102-60-2	1	CRBD CPU/FRT PANEL CINN ALL
NI	2E-30500-15	1	TRM BLOCK 4 POLE 115AMP ECOH-2/4CECN

**IMPORTANT: WHEN ORDERING, SPECIFY VOLTAGE OR TYPE GAS DESIRED
 INCLUDE MODEL AND SERIAL NUMBER**

PAGE 1
 OF 1

Some items are included for illustrative purposes only and in certain instances may not be available.



STAR INTERNATIONAL HOLDINGS INC. COMPANY

Star - Holman - Lang - Wells - Bloomfield - Toastmaster

10 Sunnen Drive, St. Louis, MO 63143 U.S.A.

(314) 678-6303

www.star-mfg.com