



Ice Machine Parts List for Models

CR1100A

CR1101W

CD1102A

CD1103W

CY1104A

CY1105W

Remote Cuber

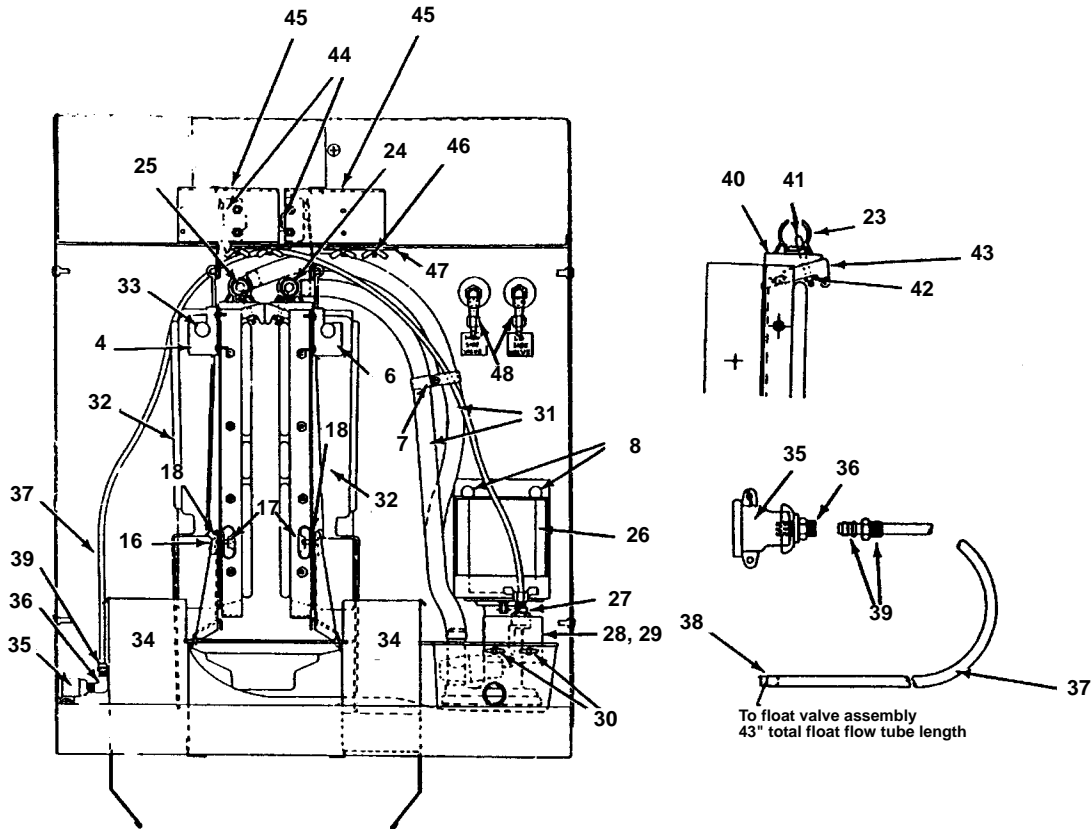
CR1190N

CD1192N

CY1194N

Manufactured May 1981 through September 1984

C1100

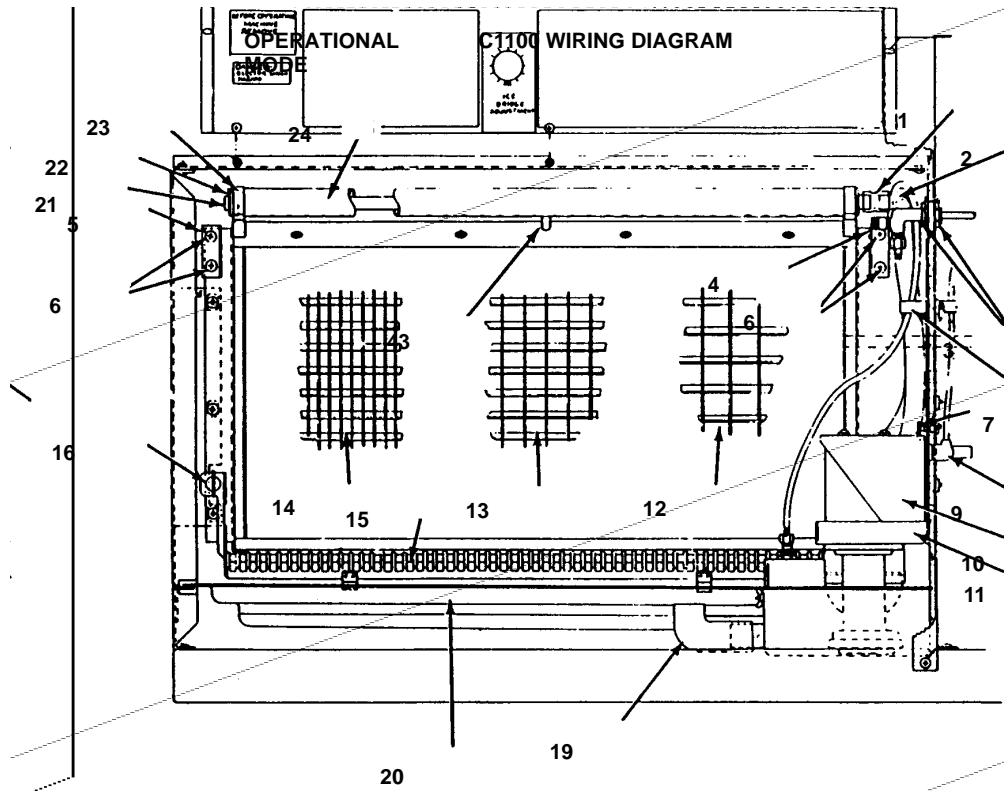


1131

EVAPORATOR COMPARTMENT

	PART NO.
1 Vinyl Tube, 3" Long	† 4420383
2 Nickel Plated 90° Elbow	No Longer Available
3 Hex Lock Nut	† 5475039
4 Right Hand Water Curtain Bracket Up to SN 81083035	No Longer Available
5 Left Hand Water Curtain Bracket Up to SN 81083035	No Longer Available
5 Water Curtain Hanger After SN 81090000	† 7621773
6 Water Curtain Bracket Mounting Screw	† 5026249
7 Plastic Clamp (For water supply line to float valve)	No Longer Available
8 Water Pump Mounting Screw	† 5124649
9 Water Pump Electrical Plug and Lead	No Longer Available
10 Water Pump Cover	No Longer Available
11 Water Pump Mounting Bracket	No Longer Available
12 Regular Size Evaporator, Front (Starting SN 81083035)	† 7619659
12 Regular Size Evaporator, Rear (Starting SN 81083035)	† 7619669
13 Dice Size Evaporator, Front (Starting SN 81081151)	No Longer Available
13 Dice Size Evaporator, Front (Starting SN 81083035)	† 7619679
13 Dice Size Evaporator, Rear (Starting SN 81081151)	No Longer Available
13 Dice Size Evaporator, Rear (Starting SN 81083035)	† 7619689
14 Half-dice Evaporator, Front (Starting SN 81081151)	No Longer Available
14 Half-dice Evaporator, Front (Starting SN 81083035)	† 7619699
14 Half-dice Evaporator, Rear (Starting SN 81081151)	No Longer Available
14 Half-dice Evaporator, Rear (Starting SN 81083035)	† 7619709
15 Harvest Rack	No Longer Available
16 Harvest Rack 1/4 Turn Fastener (Metal)	No Longer Available
16 Harvest Rack 1/4 Turn Fastener (Black)	No Longer Available
17 Harvest Rack Stud Receptacle, (Use with Metal)	No Longer Available
17 Harvest Rack Stud Receptacle, (Use with Black)	No Longer Available
18 Harvest Rack Stud Retainer (Use with Metal)	No Longer Available
18 Harvest Rack Stud Retainer (Use with Black)	No Longer Available
19 Water Level Tube	No Longer Available

C1100, CONTINUED



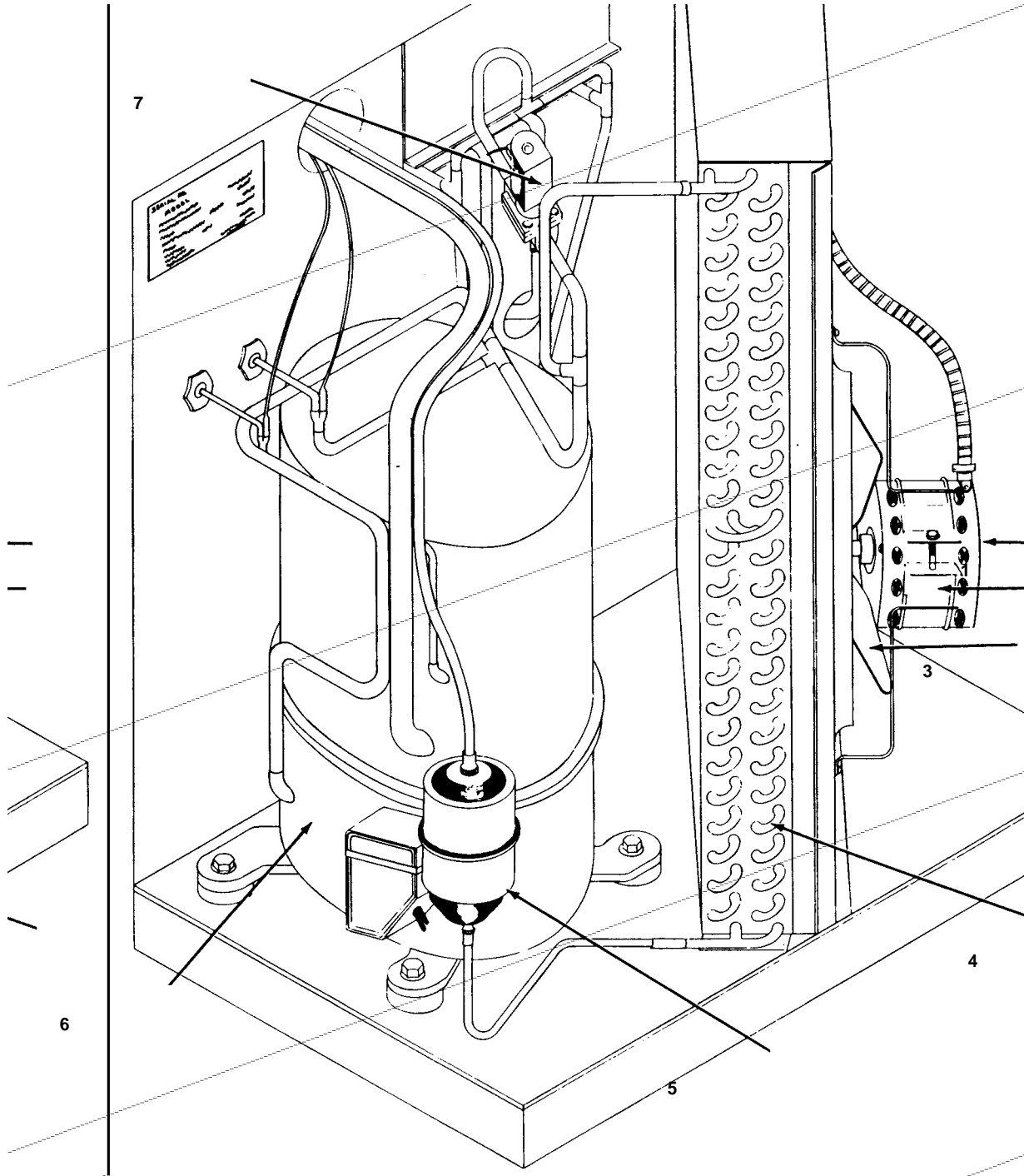
1132

EVAPORATOR COMPARTMENT, continued

	PART NO.
20 Water Trough	No Longer Available
21 Water Distributor Tube End Plug	† 4408209
22 Water Distributor Tube End Collar	† 4408219
23 Water Distributor Tube Mounting Bracket	No Longer Available
24 Water Distributor Tube Assembly, Front	No Longer Available
25 Water Distributor Tube Assembly, Rear	No Longer Available
26 Water Pump, 50 Cycle	† 7626013
27 Water Pump, 60 Cycle1480279
28 Float Valve Assembly	† 8369049
29 Float Valve Bracket	No Longer Available
30 Float Valve Bracket Wing Nut	† 5489139
31 Water Distributor Tube Supply Tube (Water pump to distributor tube, 24" long)	† 4420333
32 Water Curtain, Front and Rear (Starting with SN 81081151)	No Longer Available
32 Water Curtain, Front and Rear (Starting with SN 81090000)	No Longer Available
33 Water Curtain Hanger (On water curtain)	† 5650459
34 Ice Chute, (Front and rear)	No Longer Available
35 Water Inlet Adapter	No Longer Available
36 Water Adapter Elbow	No Longer Available
37 Water Supply Tube (Adapter to float valve, 50" long)	4420291
38 Supply Tube Nylon Insert	† 4420309
39 Sleeve and Nut	8361253
40 Water Baffle (On top extrusion)	No Longer Available
41 Centering Pin	No Longer Available
42 Centering Pin Nylon Nut	† 5429459
43 Evaporator Top Grid Extrusion (Drilled)	No Longer Available
44 Bin Microswitch	† 2300799
45 Bin Microswitch Bracket	No Longer Available
46 Wing Nut	5489029
47 Microswitch Positioning Bracket	No Longer Available
48 High & Low Side Service Valve	† 8373109

† Refer to Cross Reference Guide

C1100, CONTINUED



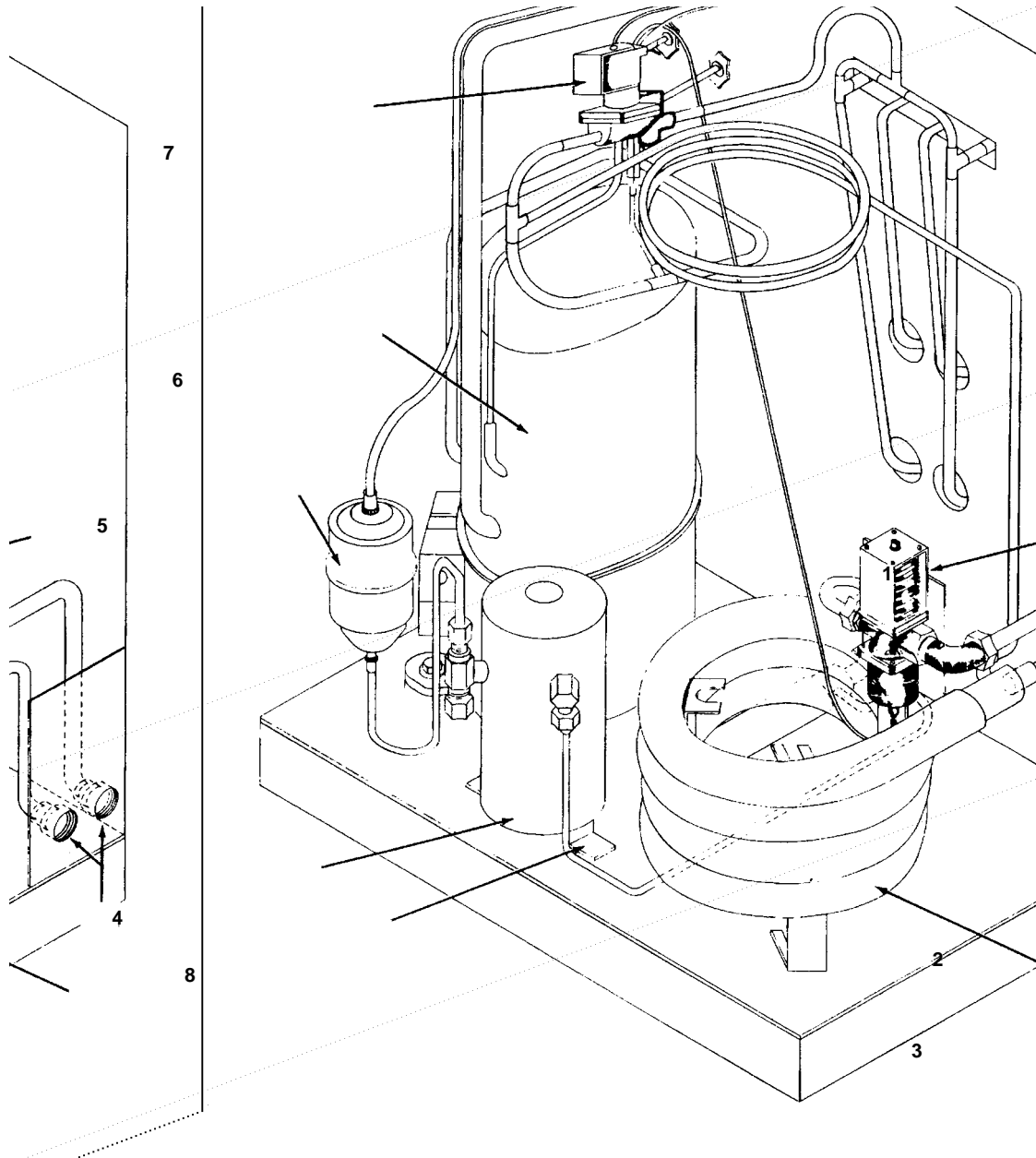
1133

AIR COOLED CUBER

	PART NO.
1 Fan Motor	No Longer Available
2 Fan Motor Mounting Bracket	3006843
3 Fan Blade	No Longer Available
4 Air Condenser	No Longer Available
5 Drier	8930269
6 Compressor, 1 phase	No Longer Available
6 Compressor, 3 phase	No Longer Available
6 Compressor, 50 Cycle	No Longer Available
Not shown — Condenser and Shroud Assembly, with Fan Motor & Blade	No Longer Available
7 Hot Gas Solenoid Valve (Use 2)	No Longer Available
7 Hot Gas Solenoid Coil (Alco only)	† 2404483
7 Hot Gas Solenoid Coil (Sporlan only)	No Longer Available

† Refer to Cross Reference Guide

C1100, CONTINUED



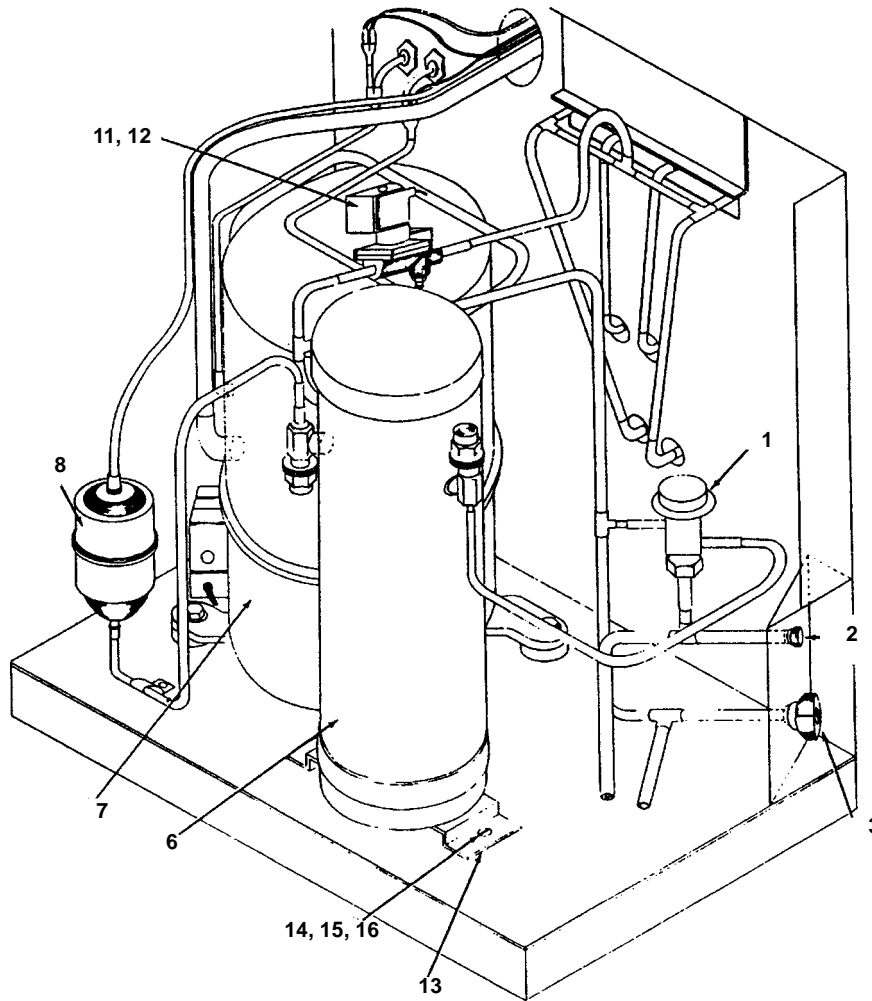
1134

WATER COOLED CUBER

	PART NO.
1 Water Regulating Valve	† 8372033
2 Water Inlet and Outlet Adapter	8706043
3 Water Condenser	No Longer Available
4 Receiver	† 1200221
5 Drier	† 8930279
6 Compressor, 1 phase	No Longer Available
6 Compressor, 3 phase	No Longer Available
6 Compressor, 50 cycle	No Longer Available
7 Hot Gas Solenoid Assembly	No Longer Available
8 Hot Gas Solenoid Coil (Alco only)	† 2404483
9 Receiver Mounting Bracket	No Longer Available
10 Hot Gas Solenoid Coil (Sporlan only)	No Longer Available

† Refer to Cross Reference Guide

C1100 — REMOTE CUBER UP TO SN 83019999



1135

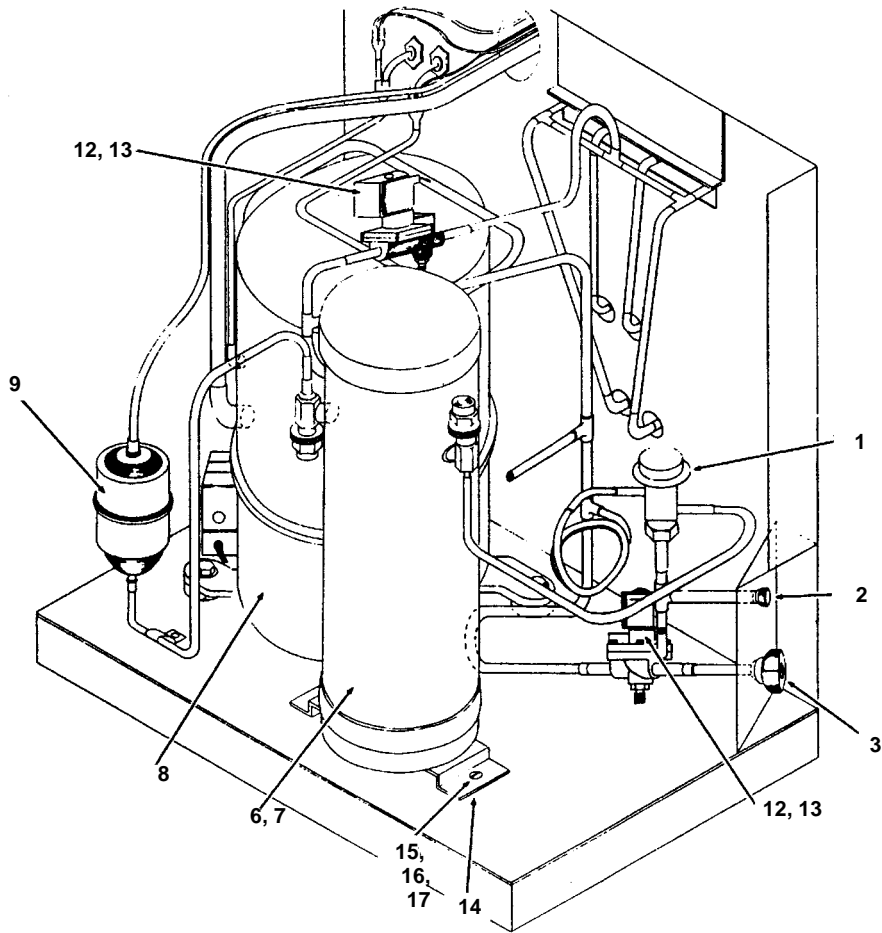
REMOTE CUBER UP TO SN 83019999

	PART NO.
1 Head Pressure Control Valve (In Ice machine)	† 8368049
2 Aero-quip Male Coupling, 3/8"	† 8360343
3 Aero-quip Male Coupling, 1/2"	† 8360353
4 1/2" Male Coupling, O-ring*	No Longer Available
5 3/8" Male Coupling, O-ring*	† 8360139
6 Receiver	No Longer Available
7 Compressor, 60 Cycle	No Longer Available
7 Compressor, 3 Phase	No Longer Available
7 Compressor, 50 Cycle	No Longer Available
8 Drier	† 8930279
9 Lockwasher (Mounting receiver to base)*	No Longer Available
10 Hex Nut (Mounting receiver to base)*	No Longer Available
11 Hot Gas Solenoid Valve Assembly (Use 2)	No Longer Available
12 Hot Gas Solenoid Coil (Alco only)	† 2404483
12 Hot Gas Solenoid Coil (Sporlan only)	No Longer Available
13 Receiver Mounting Bracket.	No Longer Available
14 Receiver Bracket Mounting Screw (2 per)	† 5033459
15 Receiver Bracket Mounting Washer (2 per)	† 5573179
16 Receiver Bracket Mounting Lockwasher (2 per)	† 5573139
17 Receiver Mounting Nut (Mounting receiver to bracket) (1 per)*	No Longer Available
18 Receiver Mounting Washer (Mounting receiver to bracket) (1 per)*	No Longer Available

*These parts are not shown.

† Refer to Cross Reference Guide

C1100 — REMOTE CUBER STARTING WITH SN 83020001



1136

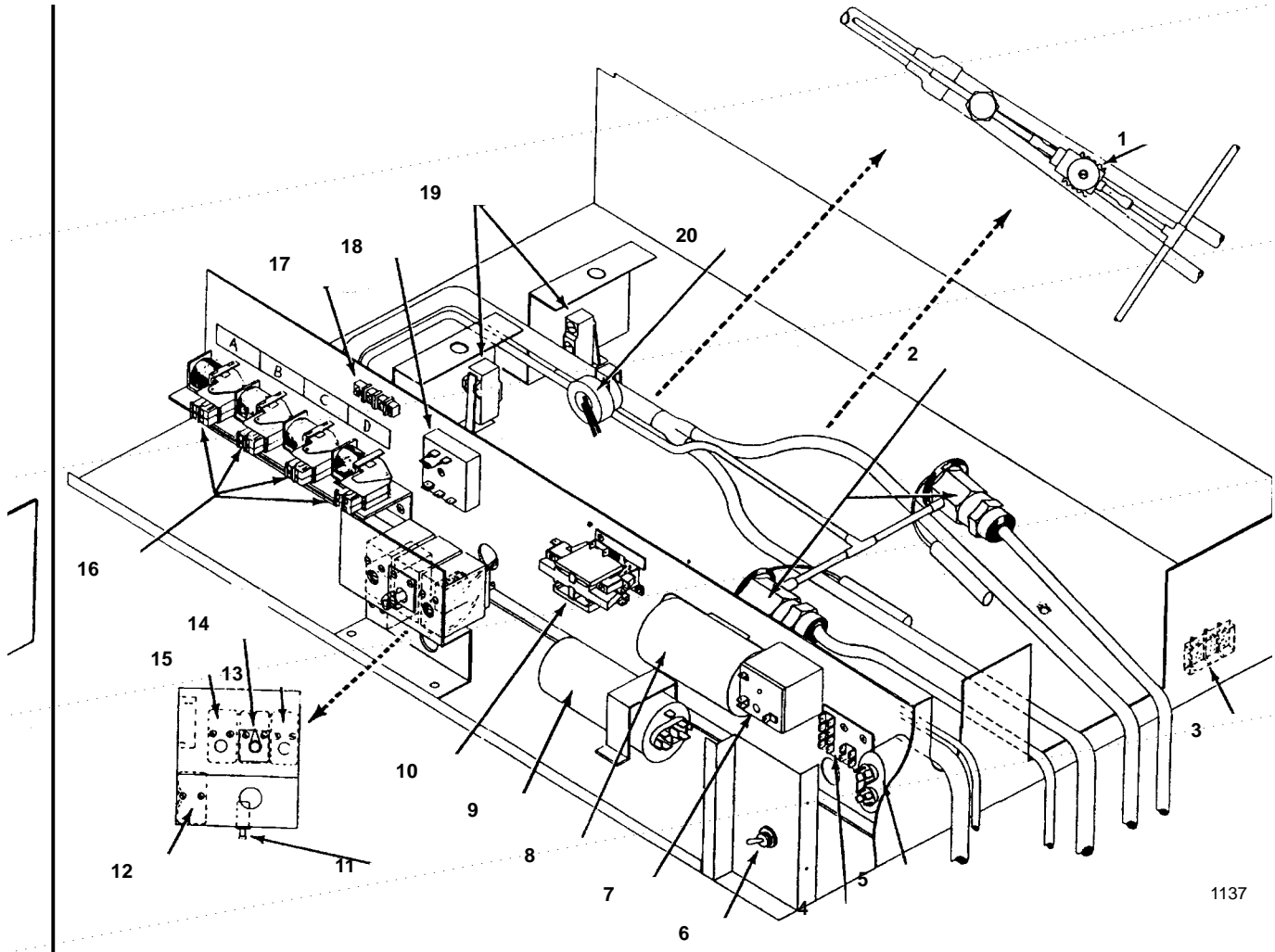
REMOTE CUBER UP TO SN 83020001

	PART NO.
1 Head Pressure Control Valve (Located at remote condenser)	No Longer Available
2 Aero-quip Male Coupling, 3/8"	† 8360343
3 Aero-quip Male Coupling, 1/2"	† 8360353
4 1/2" Male Coupling O-ring*	No Longer Available
5 3/8" Male Coupling O-ring*	† 8360139
6 Receiver	No Longer Available
7 Service Valve	† 8373169
8 Compressor, 60 Cycle	No Longer Available
8 Compressor, 3 Phase	No Longer Available
8 Compressor, 50 Cycle	No Longer Available
9 Drier	† 8930279
10 Lockwasher (Mounting receiver to base)*	No Longer Available
11 Hex Nut (Mounting receiver to base)*	No Longer Available
12 Hot Gas Solenoid Valve Assembly (Use 2)	No Longer Available
13 Hot Gas Solenoid Coil (Alco only)	† 2404483
13 Hot Gas Solenoid Coil (Sporlan only)	No Longer Available
14 Receiver Mounting Bracket	No Longer Available
15 Receiver Bracket Mounting Screw (2 per)	† 5033459
16 Receiver Bracket Mounting Washer (2 per)	† 5573179
17 Receiver Bracket Mounting Lockwasher (2 per)	† 5573139
18 Receiver Mounting Nut (Mounting receiver to bracket) (1 per)*	No Longer Available
19 Receiver Mounting Washer (Mounting receiver to bracket) (1 per)*	No Longer Available

*These parts are not shown.

† Refer to Cross Reference Guide

C1100 CONTROL PANEL



1137

CONTROL PANEL

PART NO.

1	Liquid Line Pump-Down Solenoid Valve Assembly (Remote units only)	No Longer Available
1	Liquid Line Pump-Down Solenoid Coil (Only) (Remote units only)	No Longer Available
2	Expansion Valve, Sweat	No Longer Available
3	Terminal Block	No Longer Available
4	Terminal Board	No Longer Available
5	Fan Motor Start Capacitor	8503353
6	Main Toggle Switch	† 2300849
7	Starting Relay (Tecumseh)	No Longer Available
7	Start Relay (Bristol)	No Longer Available
8	Starting Capacitor (Tecumseh)	† 8503143
8	Start Capacitor (Bristol)	8503643
9	Run Capacitor (Tecumseh)	No Longer Available
9	Run Capacitor (Bristol)	2010143
10	Contactor	No Longer Available
11	Manual Harvest Switch	No Longer Available
12	High Pressure Cut-out (Water-cooled and remote units only)	2355113
13	Low Pressure Cut-out Control (Remote units only)	No Longer Available
14	Low Pressure Cut-in (All models, knob adjustment)	No Longer Available
14	Low Pressure Cut-in (Screw driver adjustment)	No Longer Available
15	High Pressure Cut-in (Air-cooled unit only)	No Longer Available
16	Harvest Relay (4 per)	No Longer Available
17	Terminal Block	No Longer Available
18	6 Second Timer	† 2406353
19	Bin Microswitch (2 per)	† 2300799
20	Thermo-disc	No Longer Available

C1100

COMPRESSOR COMPARTMENT GROUP

	PART NO.
Compressor, 1 Ph., 60 Cycle	No Longer Available
Bristol — Run Capacitor	2010143
Start Capacitor	8503643
Start Relay	No Longer Available
Tecumseh — Run Capacitor	No Longer Available
Start Capacitor	† 8503143
Start Relay	No Longer Available
Compressor, 3 Phase	No Longer Available
Contactors (Used with 3 Phase Compressor)	No Longer Available
Air Condenser	No Longer Available
Fan Motor	No Longer Available
Fan Blade	No Longer Available
Fan Bracket	3006843
Fan Motor Mounting Nut (4 per)	† 5429559
Fan Motor Mounting Screw (4 per)	† 5033589
Fan Motor Mounting Washer (4 per)	† 5573059
Capacitor (Condenser Fan Motor)	8503353
High and Low Side Service Valve	† 8373109
Drier	† 8930279
Water Regulating Valve (Water-cooled)	† 8372033
Condenser, Water-cooled (Pack-less)	No Longer Available
Receiver (Water-cooled units only)	† 1200221
Contactors, 1 Phase	No Longer Available
Air Condenser and Shroud Assembly (Including fan motor and blade)	No Longer Available
Receiver Mounting Bracket	No Longer Available

CONTROL GROUP

Expansion Valve (Sweat)	No Longer Available
Water Solenoid Valve and Coil Assembly used on SN 81081151 to 81083035	No Longer Available
Hot Gas Solenoid Coil Sporlan	No Longer Available
Hot Gas Solenoid Electrical Coil (Alco)	† 2404483
Hot Gas Solenoid Valve Assembly	No Longer Available
Timer, 6 Second (1 per)	† 2406353
Relay, Harvest (4 per)	No Longer Available
Thermo-disc	No Longer Available
High Pressure Cut-in (Air-cooled only)	No Longer Available
Low Pressure Cut-in (Knob adjustment)	No Longer Available
Control Knob	No Longer Available
Main Toggle Switch	† 2300849
Manual Defrost Switch	No Longer Available
Bin Micro Switch	† 2300799
Bin Switch Mounting Bracket	No Longer Available
Contactors, 1 Phase	No Longer Available
Low Pressure Cut-in (Screw adjustment)	† 2355193
Low Pressure Cut-out (Remote units only)	No Longer Available
High Pressure Cut-out (Water-cooled & remote units)	2355113
Bin Switch Moisture Guard Assembly	No Longer Available

REMOTE CUBER GROUP

Head Pressure Control	No Longer Available
Receiver	No Longer Available
Low Pressure Cut-out	No Longer Available
High Pressure Cut-out	2355113
Solenoid Valve Assembly (Liquid line Pump-down)	No Longer Available
Thermo-disc	No Longer Available
Aero-quip Male Coupling 1/2"	† 8360353
Aero-quip Male Coupling 3/8"	† 8360343
O-Ring 1/2" (For coupling 8360043)	No Longer Available
O-Ring 3/8" (For coupling 8360033)	† 8360139
Headmaster Relocation Package	No Longer Available

NOTE: Remaining parts are same as used on standard C1100 cuber.

C1100, CONTINUED

	PART NO.
WATER CIRCUIT GROUP	
Water Pump	† 1480279
Water Pump Female Lead	No Longer Available
Water Distributor Tube Assembly (Front)	No Longer Available
Water Distributor Tube Assembly (Rear)	† 6571124
Water Distributor Tube End Plug	† 4408209
Water Distributor Tube End Collar	† 4408219
Water Distributor Supply Tube (Water pump to distributor)	† 4420333
Water Distributor Supply Tube Mounting Clip (2 per)	No Longer Available
Water Distributor Supply Tube Elbow	No Longer Available
Water Distributor Supply Tube Centering Pin	No Longer Available
Sump Trough	No Longer Available
Before SN 83110001, use Sump Collar and Restrictor Assembly	No Longer Available
Overflow Elbow	No Longer Available
Float Valve	† 8369049
Float Valve Bracket	No Longer Available
Water Inlet Assembly, 1/2" NPT	301101
Water Supply Tube, 1/4" O.D. (Water inlet to float valve)	4420291
Water Inlet Strainer (Y type)	† 1260033
Water Curtain Hanger Assembly, Right Hand SN 81081151 to 81083035	No Longer Available
Water Curtain Hanger Assembly, Left Hand SN 81081151 to 81083035	No Longer Available
Water Curtain Hanger After SN 81090000 (Set of RH and LH)	† 7621773
Water Curtain Hanger (On water curtain)	† 5650459
Water Curtain Repair Kit	No Longer Available
Water Curtain*	No Longer Available
*Between SN 81081151 and 81083035 also order hanger assembly	No Longer Available
EVAPORATOR GROUP	
Front Dice Evaporator From SN 81081151 to 81083035	No Longer Available
Rear Dice Evaporator From SN 81081151 to 81083035	No Longer Available
Front Half Dice Evaporator From SN 81081151 to 81083035	No Longer Available
Rear Half Dice Evaporator From SN 81081151 to 81083035	No Longer Available
Front Regular Evaporator Starting SN 81083035	† 7619659
Rear Regular Evaporator Starting SN 81083035	† 7619669
Front Dice Evaporator Starting SN 81083035	† 7619679
Rear Dice Evaporator Starting SN 81083035	† 7619689
Front Half Dice Evaporator Starting SN 81083035	† 7619699
Rear Half Dice Evaporator Starting SN 81083035	† 7619709
Water Baffle, (Mounting to top extrusion) (2 per)	No Longer Available
Water Baffle, Mounting Screw (1 per)	No Longer Available
Top Grid Extrusion (Drilled)	No Longer Available
Harvest Rack Stud Receptacle (Metal)	No Longer Available
Harvest Rack Stud Retainer (Metal)	No Longer Available
Harvest Rack 1/4 Turn Fastener (Metal)	No Longer Available
Harvest Rack	No Longer Available
Harvest Rack 1/4 Turn Fastener (Black)	No Longer Available
Harvest Rack Wing Stud Retainer	No Longer Available
Harvest Rack Wing Stud Receptacle	No Longer Available
ICE CHUTE GROUP	
Ice Chute (Front and rear)	No Longer Available
50 CYCLE MODELS ONLY	
Compressor 1 Phase	No Longer Available
Relay	No Longer Available
Start Capacitor	† 8503143
Run Capacitor	No Longer Available
Water Pump	† 1480279
Compressor 50 Hz 3 Phase	No Longer Available

† Refer to Cross Reference Guide

C1100 CABINET PANELS — PAINTED

SN 81081151 to 81083035

PART NO.

Top Cover	No Longer Available
Left Hand End Panel Assembly	No Longer Available
Right Hand End Panel Assembly	No Longer Available
Right Hand Rear Panel	No Longer Available
Left Hand Rear Louvered Panel (Air-cooled only)	No Longer Available
Right Hand Front Louvered Panel	No Longer Available
Left Hand Front Panel	No Longer Available
Trim, Right Hand Front Panel (Ice cuber)	4541483
After SN 83070001 use 8131413	
Trim, Left Hand Front Panel (Manitowoc)	No Longer Available
After SN 83070001 use 8131403	
Left Hand Rear Louvered Panel (Water and remote units only)	No Longer Available
10-32 Thumbscrew (Mounting left hand front panel)	† 5012059
Foam Tape (Mounting trim to front panel)	No Longer Available

STARTING SN 81090000

Right Hand End Panel	No Longer Available
Left Hand End Panel	No Longer Available
Right Hand Rear Panel	No Longer Available
Left Hand Front Panel	No Longer Available
Right Hand Front Panel - Louvered	No Longer Available
Left Hand Rear Panel (Air) - Louvered	No Longer Available
Left Hand Rear Panel (Water and remote) - Louvered	No Longer Available
Panel Mounting 1/4 Turn Fastener	No Longer Available
Fastener Receptacle	No Longer Available
Fastener Retainer	No Longer Available
Trim, Right Hand Front Panel (Ice cuber)	4541483
After SN 83070001 use 8131413	
Trim, Left Hand Front Louvered Panel (Manitowoc)	No Longer Available
After SN 83070001 use 8131403	
Mounting Screw, End Panels to Base	† 5026249
Top Cover	No Longer Available
Foam Tape (Mounting trim to front panels)	No Longer Available

STARTING SN 82030001

Right Hand End Panel	No Longer Available
Left Hand End Panel	No Longer Available
Left Hand Front Panel	No Longer Available
Right Hand Front Panel, Louvered	No Longer Available
Right Hand Rear Panel	No Longer Available
Left Hand Rear Panel (Air) Louvered	No Longer Available
Left Hand Rear Panel (Water and remote) Louvered	No Longer Available
8-32 Mounting Machine Thumbscrew (Mounting front panel)	† 5000013
Mounting Machine Screw (Rear panel)	† 5026249
Mounting Sheet Metal Screw (End panel to base)	† 5026249
Trim, Right Hand Front Panel (Ice cuber)	4541483
After SN 83070001 Use 8131413	
Trim, Left Hand Front Panel (Manitowoc)	No Longer Available
After SN 83070001 Use 8131403	
Top cover	No Longer Available
Foam Tape (Mounting trim to front panels)	No Longer Available

† Refer to Cross Reference Guide

C1100 CABINET PANELS — STAINLESS STEEL

SN 81081151 to 81083035

PART NO.

Top Cover	No Longer Available
Left Hand End Panel Assembly	No Longer Available
Right Hand End Panel Assembly	No Longer Available
Right Hand Rear Panel.	No Longer Available
Left Hand Rear Louvered Panel (Air-cooled only)	No Longer Available
Right Hand Front Louvered Panel	No Longer Available
Left Hand Front Panel	No Longer Available
Trim, Right Hand Front Panel (Ice cuber).	4541483
After SN 83070001 Use 8131413	
Trim, Left Hand Front Panel (Manitowoc).	No Longer Available
After SN 83070001 Use 8131403	
Left Hand Rear Louvered Panel (Water and remote only)	No Longer Available
10-32 Thumbscrew (mounting left hand front panel)	† 5012059
Left Hand Front Panel (McDonald's cuber only).	7619613
Right Hand Louvered Panel (McDonald's cuber only)	No Longer Available
Foam Tape (Mounting trim to front panel, 50" long)	No Longer Available

STARTING SN 81090000

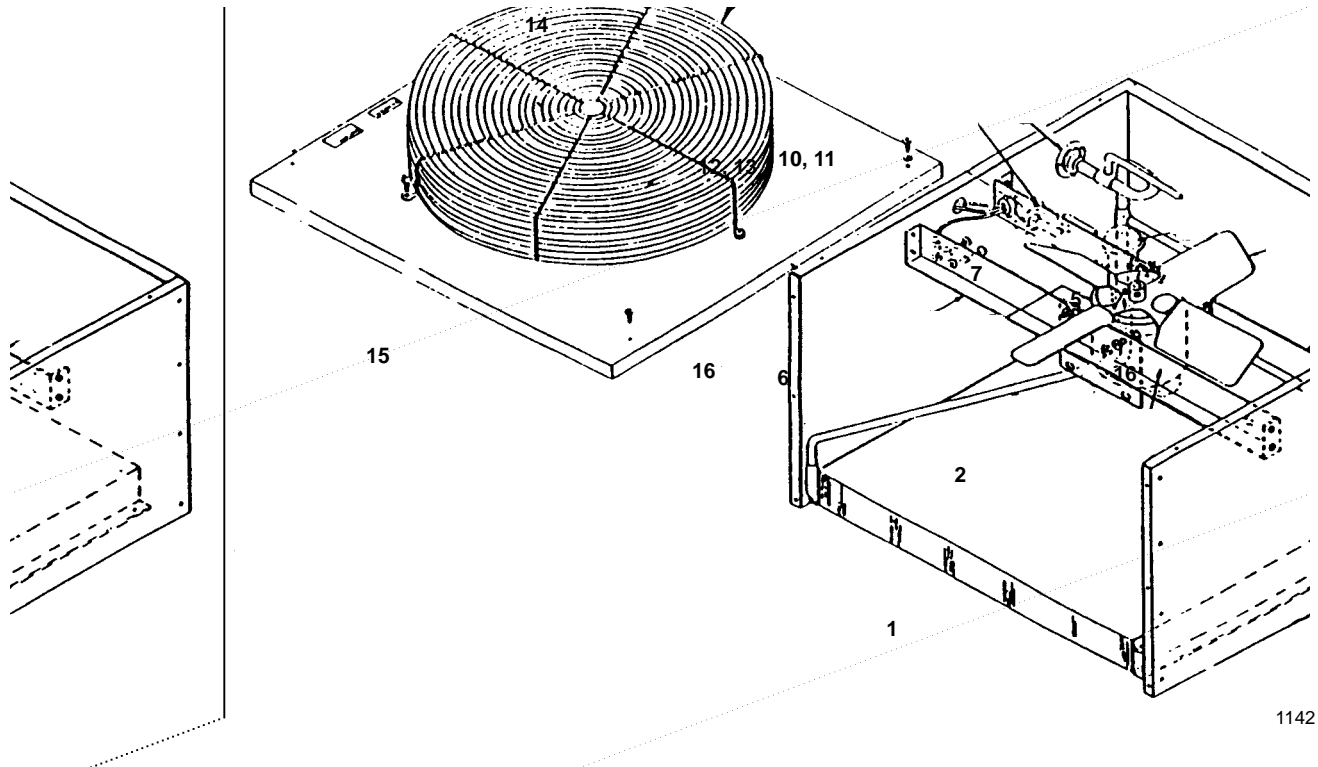
Right Hand End Panel	No Longer Available
Left Hand End Panel	No Longer Available
Right Hand Rear Panel.	No Longer Available
Left Hand Front Panel	No Longer Available
Right Hand Front Panel, Louvered.	No Longer Available
Left Hand Rear Panel (Air) Louvered	No Longer Available
Left Hand Rear Panel (Water and remote) Louvered.	No Longer Available
Panel Mounting 1/4 Turn Fastener	No Longer Available
Fastener Receptacle	No Longer Available
Fastener Retainer.	No Longer Available
Trim, Right Hand Front Panel (Ice cuber).	4541483
After SN 83070001 Use 8131413	
Trim, Left Hand Front Louvered Panel (Manitowoc).	No Longer Available
After SN 83070001 Use 8131403	
Mounting Screw, End Panels to Base	† 5026249
Left Hand Front Panel (McDonald's only).	No Longer Available
Trim, Left Hand (McDonald's) After SN 83070001	No Longer Available
Right Hand Front Panel Louvered (McDonald's only)	No Longer Available
Trim, Right Hand (McDonald's) After SN 83070001.	No Longer Available
Top Cover	No Longer Available
Foam Tape (Mounting trim to front panels, 50" long)	No Longer Available

STARTING SN 82030001

Right Hand End Panel	No Longer Available
Left Hand End Panel	No Longer Available
Right Hand Rear Panel.	7619533
Left Hand Front Panel	No Longer Available
Right Hand Front Panel, Louvered.	No Longer Available
Left Hand Rear Panel (Air) Louvered	No Longer Available
Left Hand Rear Panel (Water and remote) Louvered.	No Longer Available
8-32 Mounting Machine Thumbscrew (Mounting front panel)	† 5000013
Mounting Machine Screw (Rear panel)	† 5026249
Mounting Sheet Metal Screw (End panel to base)	† 5026249
Trim, Right Hand Front Panel (Ice cuber).	4541483
After SN 83070001 use 8131413	
Trim, Left Hand Front Panel (Manitowoc).	No Longer Available
After SN 83070001 use 8131403	
Left Hand Front Panel (McDonald's only).	No Longer Available
Trim, Left Hand (McDonald's) After SN 83070001	No Longer Available
Right Hand Front Panel Louvered (McDonald's only)	No Longer Available
Trim, Right Hand (McDonald's) After SN 83070001.	No Longer Available
Top Cover	No Longer Available
Foam Tape (Mounting trim to front panels, 50" long)	No Longer Available

† Refer to Cross Reference Guide

AC1195 REMOTE CONDENSER



1142

REMOTE CONDENSER

	PART NO.
1 Air Condenser	† 8850629
2 Fan Motor, 60 Hz	† 7629413
3 Fan Motor, 50 Hz	† 7629413
4 Fan Capacitor (Emerson)	8503353*
4 Fan Capacitor (Magnetec)	No Longer Available
5 Fan Blade	2416113*
6 Rain Slinger	2415053*
7 Headmaster Control (See item 19 below)	† 8368049
8 Toggle Switch Up to SN 82020001	No Longer Available
9 Toggle Switch After SN 82020001	No Longer Available
10 Coupling Assembly, Male 1/2"	† 8360353
11 Mounting Flange 1/2"	8360063
12 Coupling Assembly, Male 3/8"	† 8360343
13 Mounting Flange 3/8	8360053
14 Fan Grill	3400643
15 Top Cover	† 6017751
16 Base Bracket	† 6017681
17 Valve Access Fitting Core	No Longer Available
18 Female Coupling Kit (Not shown)	0700623
19 Headmaster Relocation Kit (Used for units originally built with headmaster in ice machine to relocate to condenser)	No Longer Available

*Early models used a single bracket to mount the fan motor. Those units use the following parts:

Fan Motor 60 Hz 230V	† 7619843
Fan Motor 50 Hz 230V	No Longer Available
Rain Shield	No Longer Available
Fan Blade	No Longer Available
Run Capacitor	No Longer Available

† Refer to Cross Reference Guide

INTENTIONALLY LEFT BLANK