

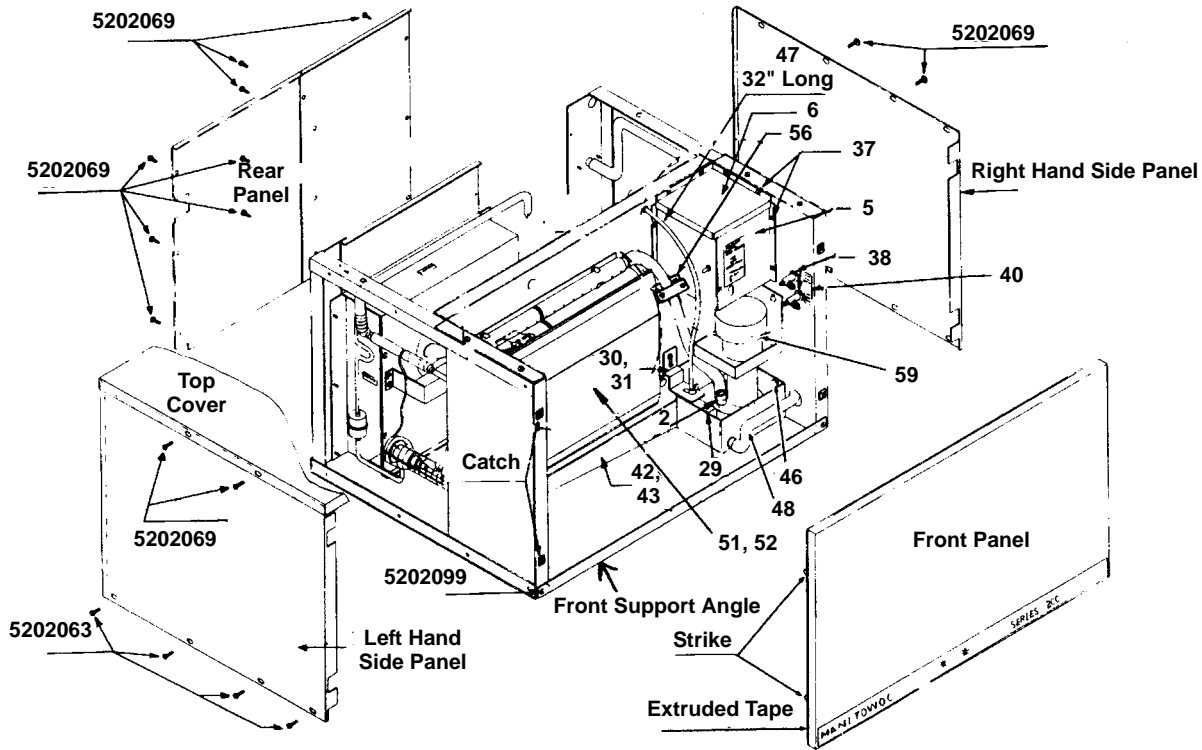


Ice Machine Parts List for E0200 and E0400 Series Cuber Models

ER0200A	ER0400A
ER0201W	ER0401W
ED0202A	ED0402A
ED0203W	ED0403W
EY0204A	EY0404A
EY0205W	EY0405W
ED0492N	EY0494N
ER0490N	

Manufactured February 1983 through December 1990

E0200 AND E0400



1151

OUTER PANELS - FAWN E0200 E0400

	E0200	E0400		PART NO.
X	X		Front Panel	No Longer Available
X	X		LH End Panel	No Longer Available
X	X		RH End Panel	No Longer Available
	X		RH Side Panel - Remote	No Longer Available
X	X		Top Cover	No Longer Available
X	X		Touch Up Paint	9400931

OUTER PANELS - STAINLESS STEEL

X			Front Panel	No Longer Available
	X		Front Panel	No Longer Available
X	X		LH End Panel	No Longer Available
X	X		RH End Panel	† 6857739
	X		RH Side Panel - Remote	† 7621203
X	X		Top Cover	No Longer Available

COMMON PARTS

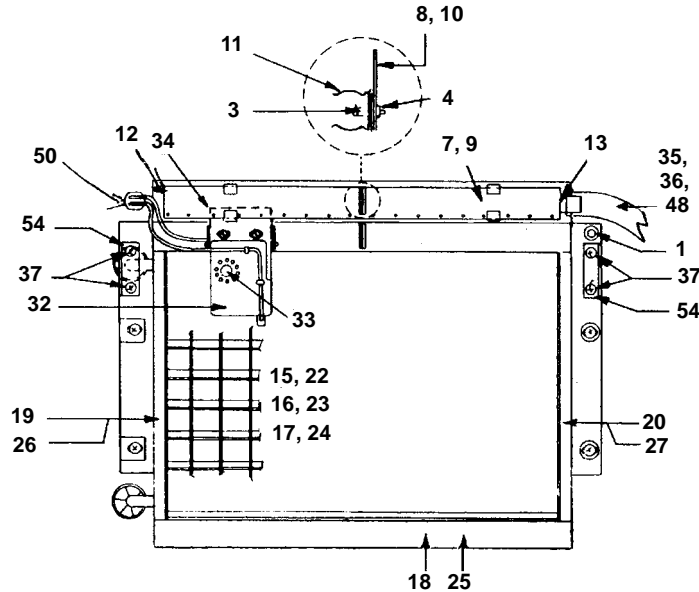
X	X		Front Support Angle	† 6580419
X	X		Rear Panel - Air-cooled	No Longer Available
X	X		Rear Panel - Water-cooled	No Longer Available
	X		Rear Panel - Remote Unit	No Longer Available
	X		Front Panel Trim	† 8134863
X			Front Panel Trim	† 8134863
X	X		Front Panel Extruded Tape	† 9202509

COMMON PARTS E0200 E0400

	E0200	E0400		PART NO.
X	X		Panel Strike and Catch (Pkg. of 4 each)	No Longer Available
X	X		Front Panel Strike Only (Pkg. of 25)	No Longer Available
X	X		Front Panel Catch Only (Pkg. of 12)	No Longer Available
X	X		"O" Ring For Front Panel	† 3718199
X	X		10-24 Phillips Head Screw (Mounting control box cover) (Pkg. of 12)	† 5202059
X	X		10-24 Slot Head Screw (Mounting outer panels) (Pkg. of 12)	† 5202069
X	X		10-24 Phillips Head Screw (Mounting front angle support) (Pkg. of 12)	† 5202099
X	X		Front Panel Fastener Screw	† 5026689
X	X		Nut Cage For Screw	† 5429109
X	X		Hole Plug	No Longer Available
X	X		Complete Cartoning	No Longer Available

† Refer to Cross Reference Guide

E0200 AND E0400 EVAPORATOR AND WATER DISTRIBUTION

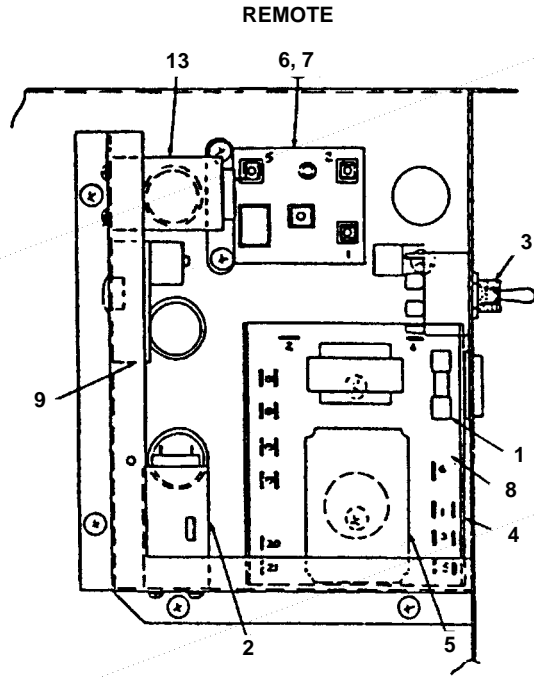
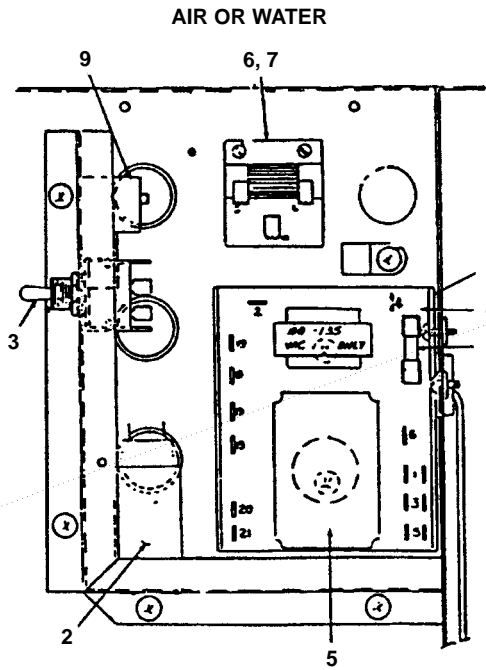


1152

		PART NO.				PART NO.			
E0200	E0400			E0200	E0400				
1	X	X	Activating Pin Assembly	7620253	34	X	X	Ice Thickness Control Bracket.	6185814
2	X	X	Reducer Assembly.	7623773	35		X	Pump Discharge Tube (White vinyl)*	No Longer Available
3	X	X	Centering Pin.	†5013139	36	X		Pump Discharge Tube (White vinyl)*	No Longer Available
4	X	X	Centering Pin Nylon Nut	†5429459	37	X	X	Screw 10-24 Phillips Head (Pkg. of 12)	†5202059
5	X	X	Control Box Front Cover	No Longer Available	38	X	X	Service Valve, High and Low Side	†8373109
6	X	X	Control Box Top Cover.	No Longer Available	39	X	X	Service Valve Cover	No Longer Available
7	X		Distribution Tube Assembly	No Longer Available	40	X	X	Service Valve Label	†8131473
8	X		Distribution Tube Mounting Bracket	No Longer Available	41	X	X	Splash Shield, Mylar	9600883
9		X	Distribution Tube Assembly	No Longer Available	42	X	X	Sump Trough before SN 860160331	No Longer Available
10		X	Distribution Tube Mounting Bracket	No Longer Available	43	X	X	Sump Trough after 860160331	6861014
11	X	X	Distribution Tube Spring Clip	No Longer Available	44	X	X	Sump Trough Support Pin	†5013139
12	X	X	Distribution Tube End Plug	†4408209	45	X	X	Support Pin Nylon Nut	†5429459
13	X	X	Distribution Tube Collar	†4408219	46	X	X	Thumbscrew (Mounting sump trough)	†5305049
14	X	X	Drier	†1230059	47	X	X	Tubing, Polyflow (Freshwater inlet to float valve)	4420291
15	X		Evaporator, Dice	No Longer Available	48	X	X	Tygon Tubing 1/2" (Used with dump valve)	†4420333
16	X		Evaporator, Half Dice.	No Longer Available	49			Black Drain Tube (Used with siphon)	No Longer Available
17	X		Evaporator, Regular.	No Longer Available	50	X	X	Terminal Bushing	No Longer Available
18	X		Grid Extrusion, Bottom.	No Longer Available	51	X		Water Curtain	†7620393
19	X		Grid Extrusion, Left Hand End.	No Longer Available	52	X	X	Water Curtain	†7619873
20	X		Grid Extrusion, Right Hand End.	No Longer Available	53	X	X	Water Curtain Hanger (White plastic)	†5650459
21	X		Grid Extrusion, Top	†6669814	54	X	X	Water Curtain Bracket (Set of RH and LH)	†7621773
22		X	Evaporator, Dice	No Longer Available	55	X	X	Water Flow Plate.	No Longer Available
23		X	Evaporator, Half Dice.	No Longer Available	56	X	X	Water Flow Clamp Assembly	7620543
24		X	Evaporator, Regular.	†6843119	57	X		Water Flow Restrictor	No Longer Available
25		X	Grid Extrusion, Bottom.	†6607314	58	X		Water Flow Restrictor	No Longer Available
26		X	Grid Extrusion, Left Hand End.	No Longer Available	59	X	X	Water Pump 60 Hz 115V	†7623063
27		X	Grid Extrusion, Right Hand End.	No Longer Available	60	X	X	Water Inlet Strainer	†1260033
28		X	Grid Extrusion, Top	†6669914	*Used with Siphon System Only.				
29	X	X	Float Valve	†8369049					
30	X	X	Float Valve Bracket before SN 840100000	No Longer Available					
31	X	X	Float Valve Bracket after SN 840100000	†7621403					
32	X	X	Ice Thickness Control	†7619963					
33	X	X	Ice Thickness Control Thumbscrew	No Longer Available					

† Refer to Cross Reference Guide

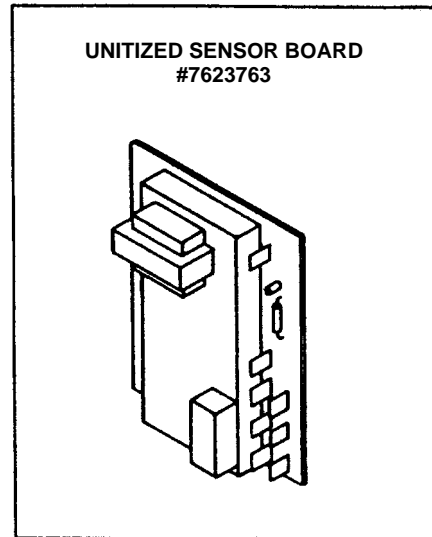
E0200 AND E0400 CONTROL BOX AIR OR WATER AND REMOTE



1153

PART NO.

	E0200	E0400		PART NO.
1	X	X	Fuse	†2510379
2	X	X	High Pressure Cut-out Control Water and remote only)	†2355011
3	X	X	Main Toggle Switch	†2300849
4	X	X	Mounting Track (For transformer board)	4408013
5	X	X	Sensor Module	Replace with †7623763
6	X	X	Start Relay	See Page 9
7	X	X	Start Relay	See Page 9
8	X	X	Transformer Board 115V 60 Cycle	Replace with †7623763
9	X	X	Water Pump Delay Timer 115V	†2406423
10	X	X	Control Box	No Longer Available
11	X	X	Control Box Cover	No Longer Available
12	X	X	Control Box Top	No Longer Available
13	X	X	Low Pressure Control	No Longer Available

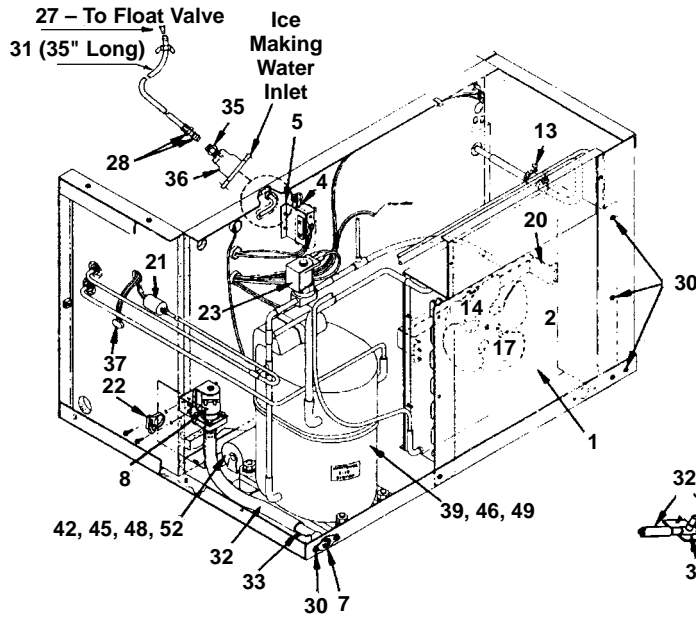


1153a

Unitized sensor board can be used to replace both the transformer board and sensor module †7623763

NOTE: For 50 Hz or 60 Hz 220V parts see Page 12.

E0200 AND E0400 AIR-COOLED COMPRESSOR COMPARTMENT



29 This siphon tube assembly is only used on units without the dump solenoid valve.

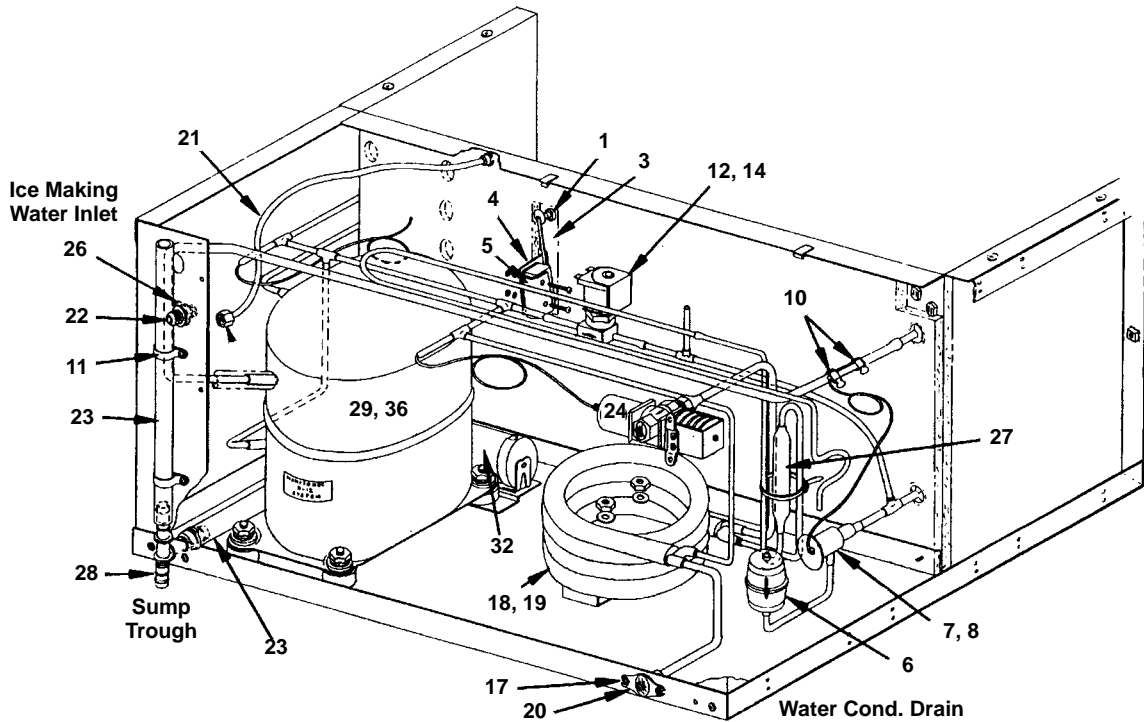
1154

		PART NO.				PART NO.	
E0200	E0400			E0200	E0400		
1	X	X	Shroud Assembly (Early model 400) No Longer Available	27	X	X	Nylon Insert (At float valve inlet) †4420309
1		X	Shroud Assembly after SN 841061416 No Longer Available	28	X	X	Sleeve and Nut 8361253
2	X	X	Air Condenser Only No Longer Available	29	X	X	Siphon Tube Assembly No Longer Available
3	X	X	Air Baffle No Longer Available	30	X	X	Slot Head Screw 10-24 (Pkg. of 12) †5202069
4	X	X	Bin Switch †2301119	31	X	X	Tubing, Polyflow 1/4" OD 4420291
5	X	X	Bin Switch Bracket. No Longer Available	32	X	X	Tubing, Clear Vinyl, 1/2" ID. †4420333
6	X	X	Bin Switch Insulation No Longer Available	33	X	X	Tubing, 5/8" OD x 2 6234514
7	X	X	Drain Adapter. 1706021	34	X	X	Water Tee Break 7621553
8	X	X	Dump Solenoid Coil Only 115V Dole No Longer Available	35	X	X	Union 1360961
8	X	X	Dump Solenoid 115V Alco 000001767	36	X	X	Water Inlet Adapter 6002421
9	X	X	Diaphragm Only - Dole Valve 2404683	37	X	X	Water Pump Lead with Female Plug No Longer Available
10	X		Expansion Valve - R12 †7620623	38	X	X	Dump Solenoid Retrofit No Longer Available
10		X	Expansion Valve - R12 up to SN 840161415 †7620623	39	X		Compressor 60 Hz 115V with Electrical Components No Longer Available
11		X	Expansion Valve - R12 After SN 840161415 †7621093	40	X		Electrical Components for Compressor AE4448A:
12	X	X	Expansion Valve - MP39 No Longer Available	41	X		Relay See Page 7
13	X	X	Expansion Valve SS Bulb Clamp †8930259	42	X		Overload Protector See Page 7
14	X		Fan Motor 60 Hz 115V. No Longer Available	43	X		Start Capacitor See Page 7
15		X	Fan Motor 60 Hz 115V Prior to SN 841061416 No Longer Available	44	X		Electrical Components for Compressor AK9434A:
16		X	Fan Motor After SN 841061416 †2412373	45	X		Relay See Page 7
17		X	Fan Blade After SN 841061416 2416103	46		X	Overload Protector See Page 7
18		X	Fan Blade Prior to SN 841061416 No Longer Available	47		X	Start Capacitor See Page 7
19	X		Fan Blade 2400151	48	X		Compressor Assy. w/Electrical Components 115V/60 Hz No Longer Available
20	X	X	Fan Bracket No Longer Available	49	X	X	Electrical Components for Compressor RSN20050IAA258 60 Hz 115V:
21	X	X	Fan Cycling Control †2301123	50	X	X	Relay See Page 9
22	X	X	Hose Clamp, Plastic †5650609	51	X	X	Overload Protector See Page 9
23	X		Hot Gas Solenoid 115V/60 Hz (Danfoss) †7630021	52	X	X	Start Capacitor See Page 9
24		X	Hot Gas Valve Assembly with Coil 60 Hz 115V †2404373				Electrical Components for Compressor RRS40075IAA219 60 Hz 115V:
25		X	Hot Gas Valve Coil Only 60 Hz 115V Alco 2404363				Relay See Page 9
26	x		Hot Gas Valve Coil Only 115V/60HZ Danfoss 000005156				Overload Protector See Page 9
							Start Capacitor See Page 9

NOTE: For 50 Hz or 60 Hz 220V parts see Page 12.

† Refer to Cross Reference Guide

E0200 AND E0400 WATER-COOLED COMPRESSOR COMPARTMENT



1155

E0200		E0400		PART NO.	E0200		E0400		PART NO.	
1	X	X		Activating Pin Assembly	7620253	23	X	X	Water Tubing, 1/2"	†4420333
2				Bushing for Activating Pin	†2502089	24	X	X	Water Regulator	†8372069
3	X	X		Bin Switch	†2301119	25	X	X	Nut, Celcon.	5013239
4	X	X		Bin Switch Bracket	No Longer Available	26	X	X	Locknut.	†5475039
5	X	X		Bin Switch Insulation	No Longer Available	27	X	X	Receiver	00008892
6	X	X		Drier.	†8930259	28	X	X	Barbed Tee	No Longer Available
7	X			Expansion Valve - R12	†7620623	29	X		Compressor 60 Hz 115V with Electrical Components	No Longer Available
7		X		Expansion Valve - R12 up to SN 840161415	†7620623				Electrical Components for Compressor AE4448A:	
8		X		Expansion Valve - R12 after SN 840161415	†7621093	30	X		Relay	See Page 7
9	X	X		Expansion Valve MP39	No Longer Available	31	X		Overload Protector	See Page 7
10	X	X		Expansion Valve Stainless Steel Bulb Clamp	†5650529	32	X		Start Capacitor	See Page 7
11	X	X		Plastic Clamp	5650101				Electrical Components for Compressor AK9434A:	
12	X			Hot Gas Solenoid 115V/60 Hz (Danfoss)	†7630021	33	X		Relay	See Page 7
13	X			Hot Gas Solenoid 208-230V 50-60 Hz (Danfoss)	†7630081	34	X		Overload Protector	See Page 7
14		X		Hot Gas Valve Assembly with Coil 60 Hz 115V.	†2404373	35	X		Start Capacitor	See Page 7
15	X	X		Hot Gas Valve Coil Only 115V.	2404363	36		X	Compressor Assy. w/Electrical Components 115V/60 Hz	No Longer Available
16	X	X		Hot Gas Valve Coil Only 220V	†2404483				Electrical Components for Compressor RSN20050IAA258:	
17	X	X		Screw 10-24 Slot Head (Pkg. of 12).	†5202069	37	X		Relay	See Page 9
18	X			Water Condenser up to SN 860861874	1165061	38	X		Overload Protector	See Page 9
18	X			Water Condenser after SN 860861874	†No Longer Available	39	X		Start Capacitor	See Page 9
19		X		Water Condenser	†No Longer Available	40	X		Electrical Components for Compressor RRS40075IAA219:	
20	X	X		Water Condenser Outlet Adapter.	8706103	41	X		Relay	See Page 9
21	X	X		Water Inlet Tubing, 1/4" OD.	4420291	42	X		Overload Protector	See Page 9
22	X	X		Water Inlet Fitting	No Longer Available				Start Capacitor	See Page 9

† Refer to Cross Reference Guide

COMPRESSOR COMPONENTS FOR E0200

115V/60 HZ/1 PH

Compressor Model Number	Start Relay	Overload	Start Capacitor
Tecumseh AE4448A	No Longer Available	No Longer Available	8503273
Tecumseh AK9434A	8503743	No Longer Available	8503713
Copeland RS40CIEIAA234	† 1500011	No Longer Available	8505133

230V/50 HZ/1 PH

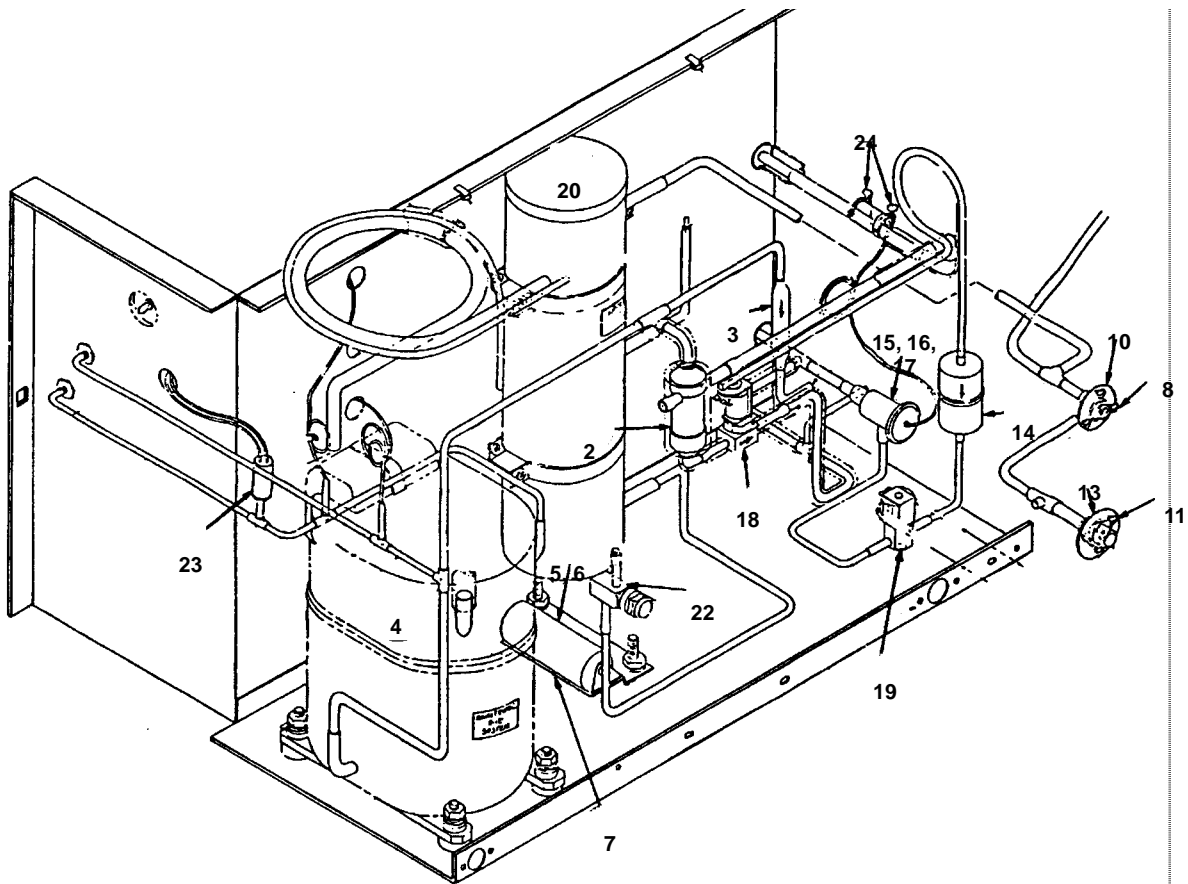
Compressor Model Number	Start Relay	Overload	Start Capacitor
Tecumseh AE2415A	No Longer Available	No Longer Available	No Longer Available
Tecumseh AK9441A	No Longer Available	None	No Longer Available
Copeland RS40CIEIAZ234	No Longer Available	No Longer Available	No Longer Available

230V/60 HZ/1 PH

Compressor Model Number	Start Relay	Overload	Start Capacitor
Tecumseh AK9434A	No Longer Available	None	8503723
Tecumseh AE2413A	8503503	8503513	8503493

† Refer to Cross Reference Guide

**E0200 REMOTE
MODEL E0400 REMOTE CUBER GROUP**



1156

	PART NO.
1 Accumulator - Only Used up to SN 880962503	No Longer Available
2 Harvest Cycle Reservoir - Used After SN 880962503	No Longer Available
3 Check Valve	8373143
4 Compressor*	No Longer Available
5 Start Capacitor for Copeland*	† 1500021
6 Start Capacitor for Tecumseh	No Longer Available
7 Mounting Bracket	No Longer Available
8 Coupling, Aero-quip Male 5/8-18	† 8360343
9 O-ring 1/2" (For coupling 8360353)	No Longer Available
10 Flange for Coupling	8360053
11 Coupling, Aero-quip Male 1-1/16-12	† 8360353
12 O-ring 3/8" (For coupling 8360343)	† 8360139
13 Flange for Coupling	8360063
14 Drier	† 8930279
15 Expansion Valve - R12 - Prior to SN 840161415	† 7620623
16 Expansion Valve - R12 - After SN 840161415	† 7621093
17 Expansion Valve - MP39	No Longer Available
18 Hot Gas Solenoid Valve	† 2404373
19 Liquid Line Solenoid	2404523
20 Receiver with Service Valves	† 7629583
21 Receiver Safety Plug (Not shown)	No Longer Available
22 Service Valve Only	† 8373169
23 Suction Pressure Limiter Control	No Longer Available
24 Stainless Steel Clamps	† 5650529

*For components other than 115V/60 cycle see Page 12.

† Refer to Cross Reference Guide

COMPRESSOR COMPONENTS FOR E0400

115V/60 HZ/1 PH

Compressor Model Number	Start Relay	Overload	Start Capacitor
Copeland RSN20050IAA258	† 1500011	No Longer Available	† 1500021
Copeland RRS40075IAA219	† 7623323	No Longer Available	† 1500021
Tecumseh AJA7461YXA	No Longer Available	8505273	No Longer Available

230V/50 HZ/1 PH

Compressor Model Number	Start Relay	Overload	Start Capacitor
Copeland RSN20050IAG222	† 1502681	† 1502731	No Longer Available
Copeland RSN20050IAZ204	No Longer Available	† 1502731	No Longer Available
Tecumseh AJ7465B	No Longer Available	None	8503833
Tecumseh AJA7461YXC	No Longer Available	No Longer Available	No Longer Available

230V/60 HZ/1 PH

Compressor Model Number	Start Relay	Overload	Start Capacitor
Copeland RSN20050IAV715	No Longer Available	No Longer Available	No Longer Available
Tecumseh AJ250GT432A4	No Longer Available	No Longer Available	No Longer Available

† Refer to Cross Reference Guide

AC0495 REMOTE CONDENSER PARTS LIST

AC0495 REMOTE CONDENSER UP TO SN 900790000

Illustration 1

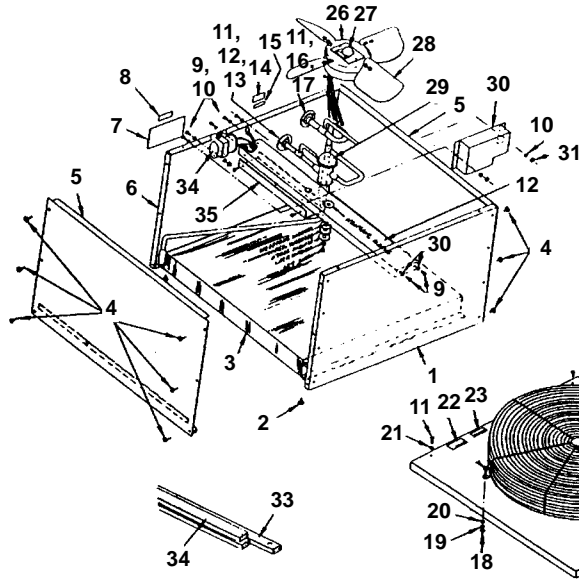
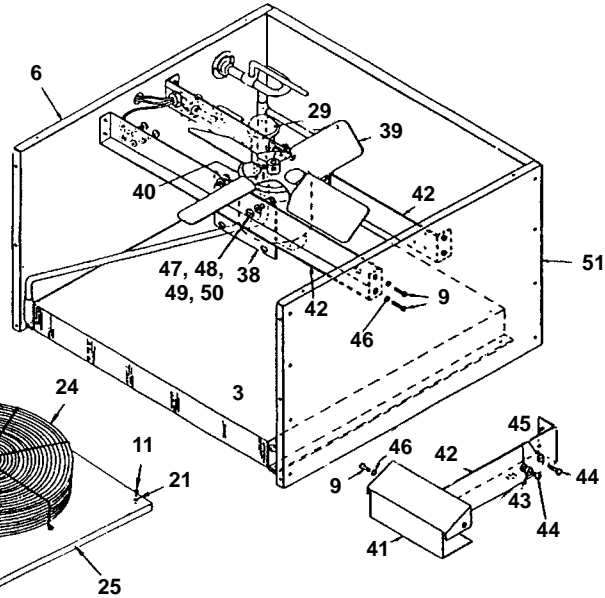


Illustration 2



1157

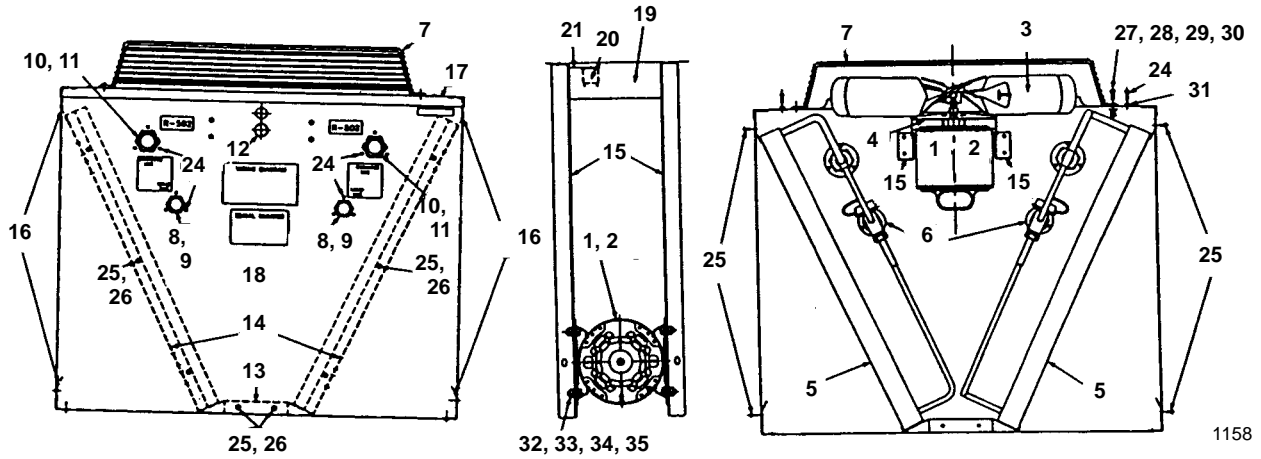
		PART NO.			PART NO.
1	Front Panel	† 6204714	20	Flatwasher 1/4"	† 5573049
2	8 x 1/2" Sheet Metal Screw Type B . .	† 5124649	21	Lockwasher #10	† 5544649
3	Air Condenser	† 8850639	22	Label (Caution)	8130361
4	8 x 1/2" Sheet Metal Screw Type A . .	† 5121539	23	Label (Danger)	† 8136043
5	Right and Left Hand End Panel	No Longer Available	24	Fan Grill	3400643
6	Rear Panel	No Longer Available	25	Top Cover	† 6017751
7	Label (Wiring Diagram)	8131733	26	Fan Motor 60 Hz 115V	No Longer Available
8	Label (Motor Maintenance)	8131743	27	Rain Shield	No Longer Available
9	8-32 x 1/2" Machine Screw	† 5026249	28	Fan Blade (Set of 4)	No Longer Available
10	Lockwasher #8	† 5544599	29	Head Pressure Control R12	No Longer Available
11	10-24 x 5/8" Screw	† 5202059	30	Electrical Cover	6567714
12	Mounting Flange 3/8"	8360053	31	Hex Nut 8-32	† 5429069
13	Coupling 3/8" OD Tube	† 8360343	32	Fan Motor Bracket	No Longer Available
14	Label (R12 System)	8131653	33	Base Bracket (2 per)	† 6017681
15	Label (Made in USA)	8130271	34	Condenser Mounting Legs (4 per) . . .	† 6017691
16	Mounting Flange 1/2"	8360063	35	Wire Guard	No Longer Available
17	Coupling 1/2" OD Tube	† 8360353	36	Capacitor	No Longer Available
18	1/4"-20 Hex Nut	† 5429529	37	Female Coupling Kit	0700623
19	Lockwasher Split 1/4"	† 5545119			

AC0495 after SN900790000
or after Installation of 7623833 Fan Motor Kit
See Illustration 2 for Unique Items

38	Fan Motor	† 7629423	45	Lockwasher #10	† 5573209
39	Fan Blade	2416113	46	Lockwasher #8	† 5544599
40	Rain Slinger	2415053	47	Lockwasher 5/16" Split	† 5573139
41	Electrical Cover	† 6017761	48	Flatwasher	† 5573099
42	Fan Mounting Bracket (Needs 2)	6626314	49	Hex Nut 5/16-18	† 5429759
43	Cup Washer	2510253	50	Screw, 5/16-18 Hex Head	† 5035659
44	Screw 10-32 x 1/2"	† 5027019	51	Front Panel	† 6017721

† Refer to Cross Reference Guide

REMOTE CONDENSER DC0495



	PART NO.
1 Fan Motor 115V/60 Hz	† 7629413
2 Fan Motor 230V/50-60 Hz	† 7629413
3 Fan Blade	2416113
4 Rain Slinger	2415053
5 Air Condenser	† 8850639
6 Headmaster Control - R12	† 8368049
7 Fan Guard	3400643
8 Male Coupling, 1-1/8" x 3/8 OD	No Longer Available
9 Coupling Flange for Male Coupling, 1-1/8" x 3/8 OD	8360183
10 Male Coupling, 1-7/16 - 16 x 1/2 OD	No Longer Available
11 Coupling Flange	8360173
12 Hole Plug for 7/8" Hole	4301463
13 Base	6017791
14 Condenser Mounting Angle	6017771
15 Base Bracket for Fan Mounting	† 6008901
16 Support Bracket	† 6017781
17 Top Cover	† 6017881
18 Front Panel	No Longer Available
19 Electrical Box Cover	† 6017761
20 Relay	No Longer Available
21 Relay Mounting Bracket	No Longer Available
22 Transformer (Not shown)	No Longer Available
23 Electrical Junction Box (Not shown)	2515013
24 Screw, #10-24 x 0.62	† 5202059
25 Screw, #8 x 0.50	† 5121539
26 Lockwasher, #8	† 5544599
27 Screw, 0.25 x 0.62	† 5033459
28 Lockwasher 0.25 Split SS	† 5545119
29 Washer - Flat 0.25 SS	† 5573049
30 Nut 0.25-20 Steel Hex	† 5429529
31 Lockwasher #10	† 5544649
32 Screw, 0.31-18 x 0.62 Hex Head	† 5035659
33 Nut 0.31-18 Steel Hex Head	† 5429759
34 Washer, Flat 0.31 ID	† 5573099
35 Lockwasher 0.31 Split Zinc	5573139
36 Back Panel (Not shown)	† 6017881

NOTE: Items 20, 21, 22 and 23 are used only when the optional K00095 Relay/Transformer Kit has been installed.

50 HZ MODELS ONLY

(Use same parts as previously listed for standard E0200 and E0400 ice cubers, with the following exceptions)

CONTROL BOX

PART NO.

E0200 E0400

- X Compressor Crankcase Pressure Regulator Valve No Longer Available
- X Compressor 50 Hz 230V No Longer Available

Electrical Components for Compressor AE2415A: See Page 7

Electrical Components for Compressor AK9441A: See Page 7

- X Compressor Assembly 50 Hz No Longer Available

COPELAND COMPONENTS: See Page 9

TECUMSEH COMPONENTS: See Page 9

- X Fan Motor No Longer Available
- X Fan Motor up to SN 841061416 No Longer Available
- X Fan Motor After SN 841061416 No Longer Available
- X Hot Gas Solenoid 208-230V/50-60 Hz (Danfoss) † 7630081
- X Hot Gas Solenoid Valve Assembly 2404333
- X Hot Gas Solenoid Coil Only Alco. † 2404483
- X Water Pump. † 7626013
- X Unitized Sensor Board No Longer Available
- X Sensor Module No Longer Available
- X Transformer Board No Longer Available

60 Hz 220V Models

- X Dump Solenoid Coil Only (Eaton Dole). No Longer Available
- Dump Valve (Alco). 000001768
- X Fan Motor 2412333
- X Fan Motor No Longer Available
- X Hot Gas Solenoid Valve 115V/60 Hz (Danfoss) † 7630081
- X Hot Gas Solenoid Valve Coil Only Alco. † 2404483
- X Water Pump. † 7626013
- X Compressor 60 Hz 220V AK9434A. † 7621393

Components for AK9434A Model Compressors: See Page 7

Components for AE2413A Model Compressors: See Page 7

- X Compressor Assembly No Longer Available
- Start Components:** See Page 9
- X Transformer Board 220V 60 Hz. Replace with † 7623753
- X Sensor Module Replace with † 7623753
- X Unitized Sensor Board † 7623753

† Refer to Cross Reference Guide