



Ice Machine Parts List For Models

ER1100A

ER1101W

ED1102A

ED1103W

EY1104A

EY1105W

EY1114A

EY1115W

Remote Cuber

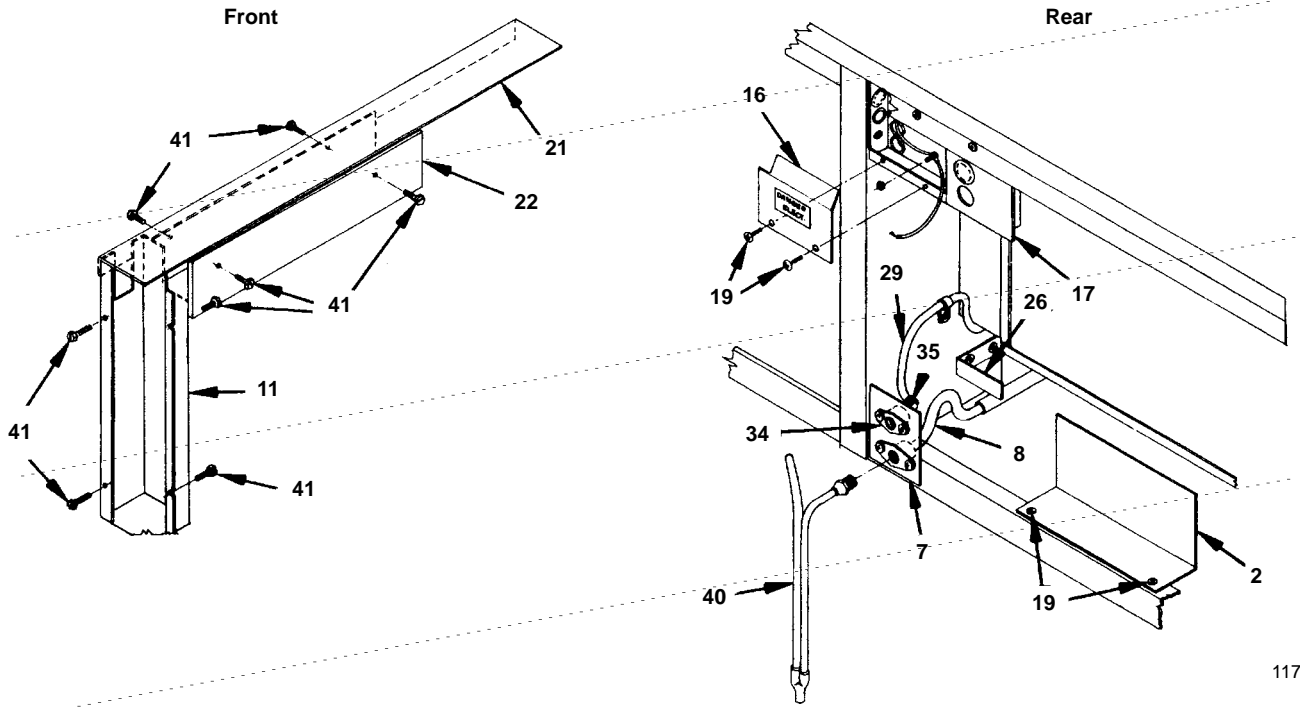
ER1190N

EY1194N

ED1192N

EY1184N

Manufactured October 1984 through June 1986



1171

**WATER CIRCUIT GROUP
& EXPANSION VALVES**

	PART NO.
1 Control Box Cover (Air)	No Longer Available
1 Control Box Cover (Water and remote)	No Longer Available
2 Curtain Limiter Bracket	No Longer Available
3 Distributor Tube, Front	No Longer Available
4 Distributor Tube, Rear	No Longer Available
5 Distributor Tube Mounting Clip	No Longer Available
6 Distributor Tube Centering Pin	† 5013139
7 Drain Fitting Mounting Plate	No Longer Available
8 Drain Tube Assembly	No Longer Available
9 Expansion Valve	† 8367289
10 Expansion Valve Stainless Steel Clamp	† 5650529
11 Expansion Valve Enclosure Assembly	No Longer Available
12 Float Valve	† 8369049
13 Float Valve Bracket	No Longer Available
14 Ice Thickness Control	† 7620613
15 Ice Thickness Control Bracket	6185814
16 Junction Box Cover	No Longer Available
17 Junction Box Weldment	No Longer Available
18 Nylon Nut for Centering Pin	† 5429459
19 Screw, Self Tap Hex	† 5202109
20 Splash Shield	No Longer Available
21 Suction Tube Cover	No Longer Available
22 Suction Tube Enclosure Assembly	No Longer Available
23 Sump Trough (For units with siphon assembly)	No Longer Available
24 Sump Trough (For units with dump valve)	† 6877219
25 Sump Trough Support Left Hand	No Longer Available
26 Sump Trough Support Right Hand	No Longer Available
27 Sump Trough Support Weldment	No Longer Available
28 Thumbscrews (Pkg. of 6)	† 5305049
29 Tubing, Polyflow, 1/4" OD	4420291

30 Union with Sleeve and Nut (At strainer)	No Longer Available
Water Curtain Assembly (Front or rear)	No Longer Available
31 Water Curtain Hanger (On water curtain)	† 5650459
32 Water Curtain Hooks, Set of Right and Left Hand*	† 7621773
33 Water Flow Clamp Assembly	7620543
34 Water Inlet Adapter	6002421
35 Water Inlet Adapter Elbow	No Longer Available
36 Water Inlet Strainer	† 1260033
37 Water Pump	† 1480279
38 Water Pump Bracket	† 6080414
39 Water Pump "Y" Tube Assembly	No Longer Available
40 Water Syphon Assembly	No Longer Available
41 Wing Nuts	† 5489139
42 Pump Discharge Tube Clamp	† 5650539

*When ordering water curtain hooks for a machine with SN prior to 850760600 also order a new water curtain.

EVAPORATOR ASSEMBLY GROUP

Regular Evaporator Assembly

Front	No Longer Available
Rear	No Longer Available

Dice Evaporator Assembly

Front	No Longer Available
Rear	No Longer Available

Half Dice Evaporator Assembly

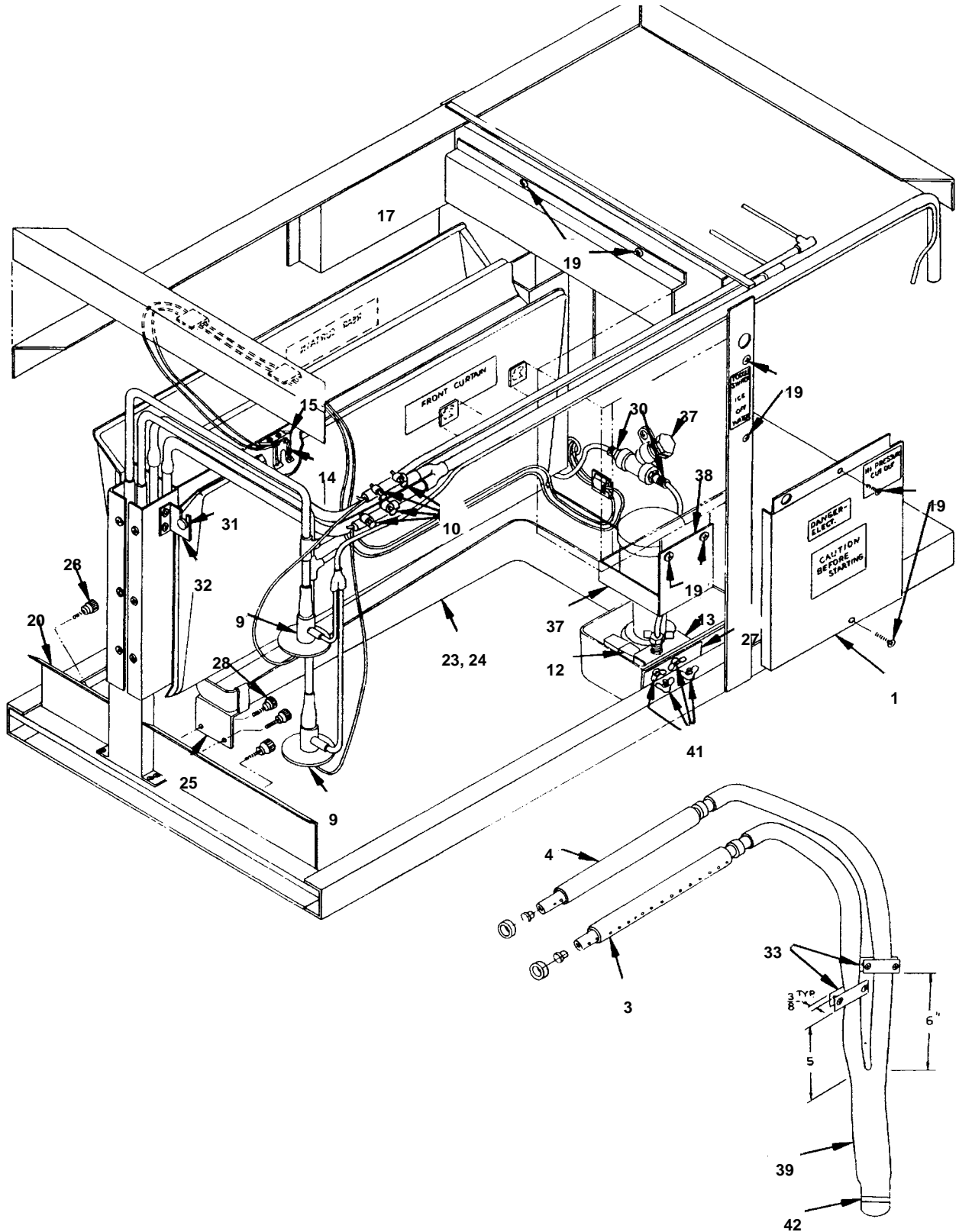
Front	No Longer Available
Rear	No Longer Available

Top Evaporator Extrusion Assembly

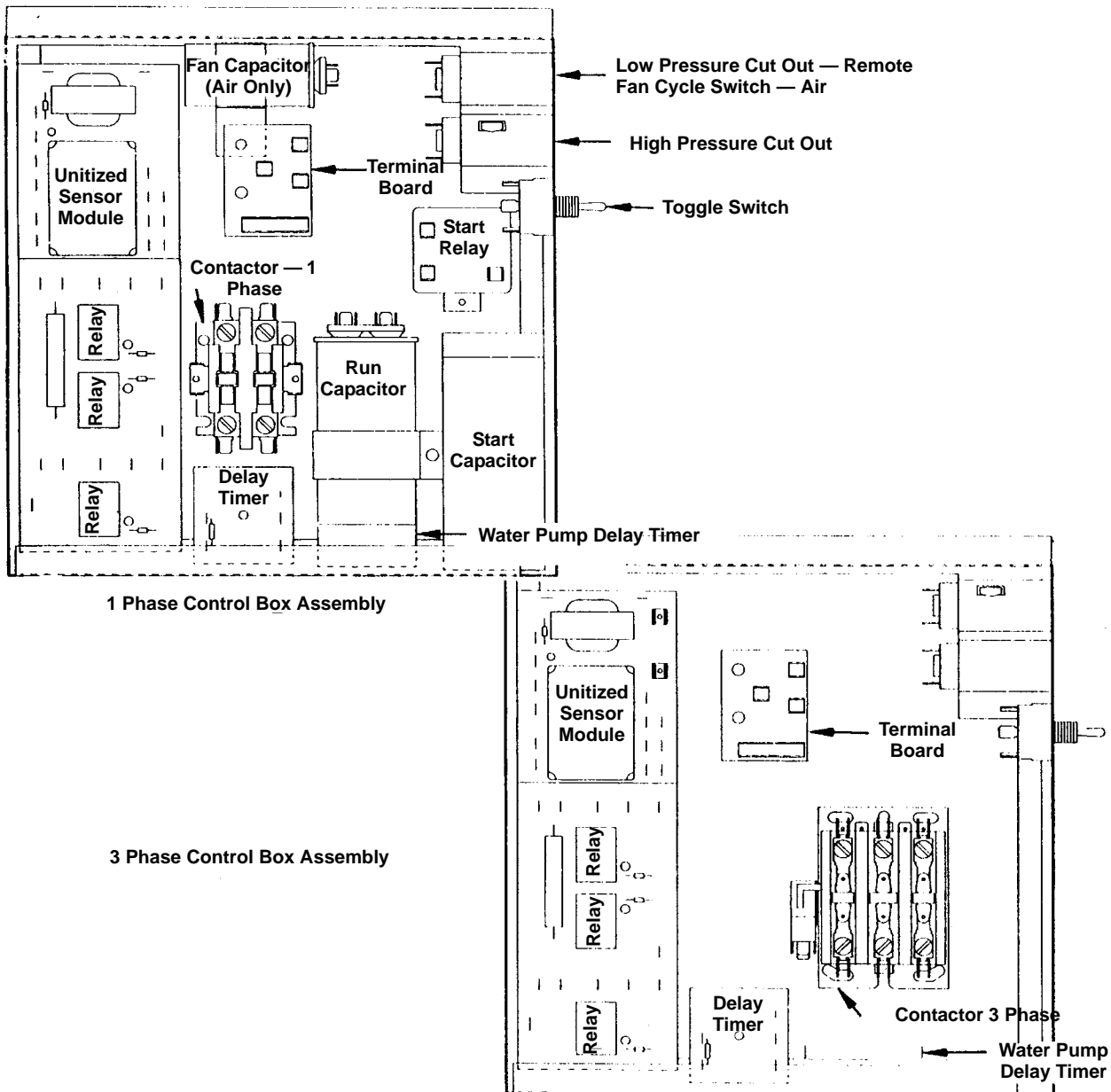
Front	No Longer Available
Rear	No Longer Available

† Refer to Cross Reference Guide

E1100, CONTINUED



E1100, CONTINUED



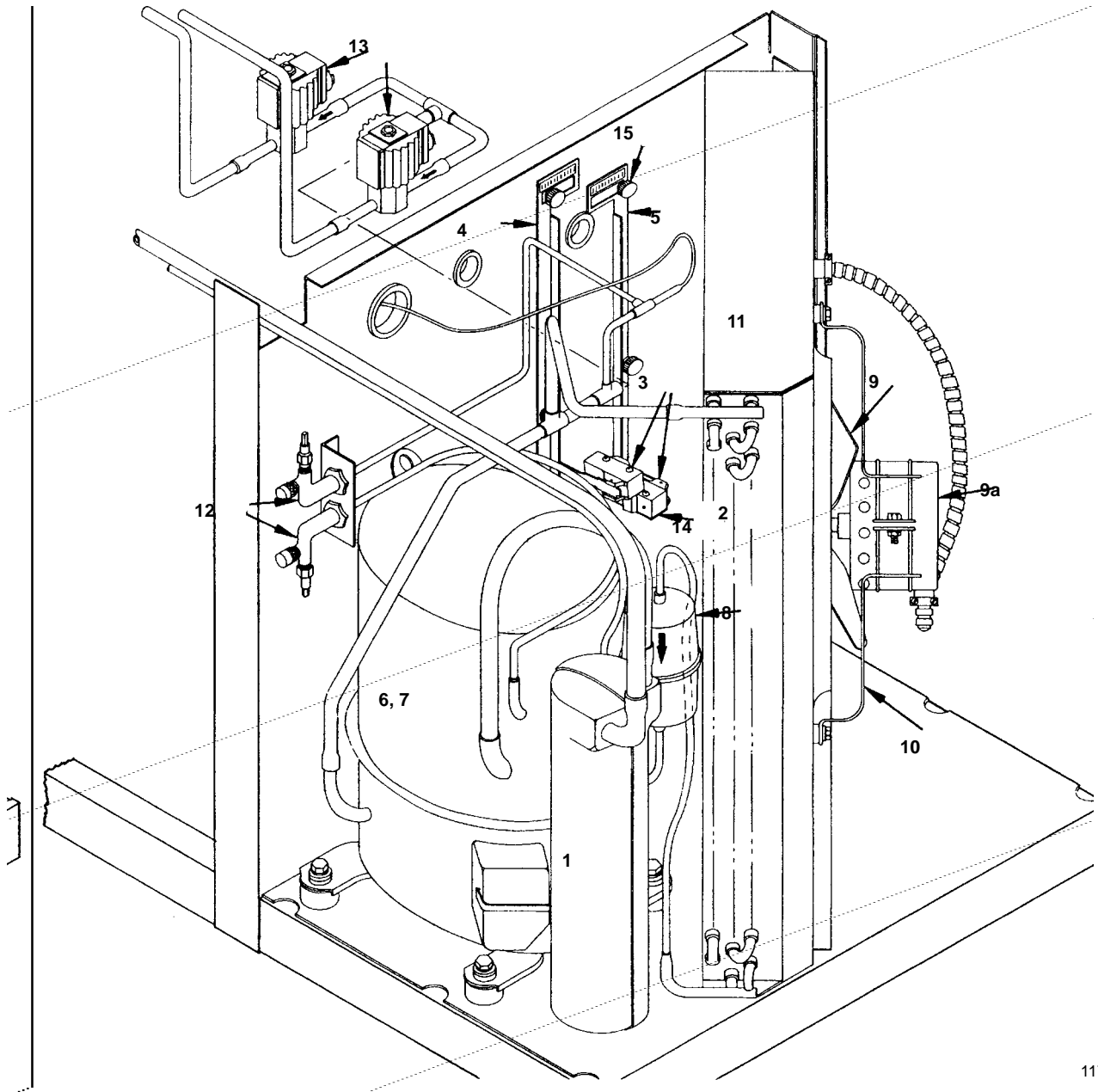
1173

CONTROL BOX COMPONENTS	PART NO.	PART NO.
Contactors - 1 Phase	No Longer Available	Relay Mounting Board
Contactors - 3 Phase	No Longer Available	Unitized Sensor Module
(Includes microswitch)	No Longer Available	Terminal Board
Control Box Cover (Air)	7621073	Toggle Switch
Control Box Cover		Delay Timer - 7 seconds
(Water and remote)	No Longer Available	Water Pump Delay Timer
Fan Capacitor	No Longer Available	Bristol - Run Capacitor
Fan Cycle Switch	No Longer Available	Start Capacitor
Fuse (Pkg. of 6) 5 amp	† 2510379	Start Relay
High Pressure Cut-out	2355113	Tecumseh - Run Capacitor
High Pressure Cut-out McDonald's		Start Capacitor
after SN 85106000	No Longer Available	Start Relay
Low Pressure Cut-out (Remote)	No Longer Available	
Relay	No Longer Available	

NOTE: For 50 cycle parts see Page 8.

† Refer to Cross Reference Guide

E1100, CONTINUED



1174

AIR COOLED CUBER

	PART NO.
1 Accumulator Assembly*	7620943
2 Air Condenser	No Longer Available
2 Air Condenser/Fan/Shroud Assembly	No Longer Available
3 Bin Switch	No Longer Available
4 Bin Switch Bracket (Front)	No Longer Available
5 Bin Switch Bracket (Rear)	No Longer Available
6 Compressor - 1 Phase**	No Longer Available
7 Compressor - 3 Phase**	No Longer Available
8 Drier	8930279

*Not used after SN 850965601

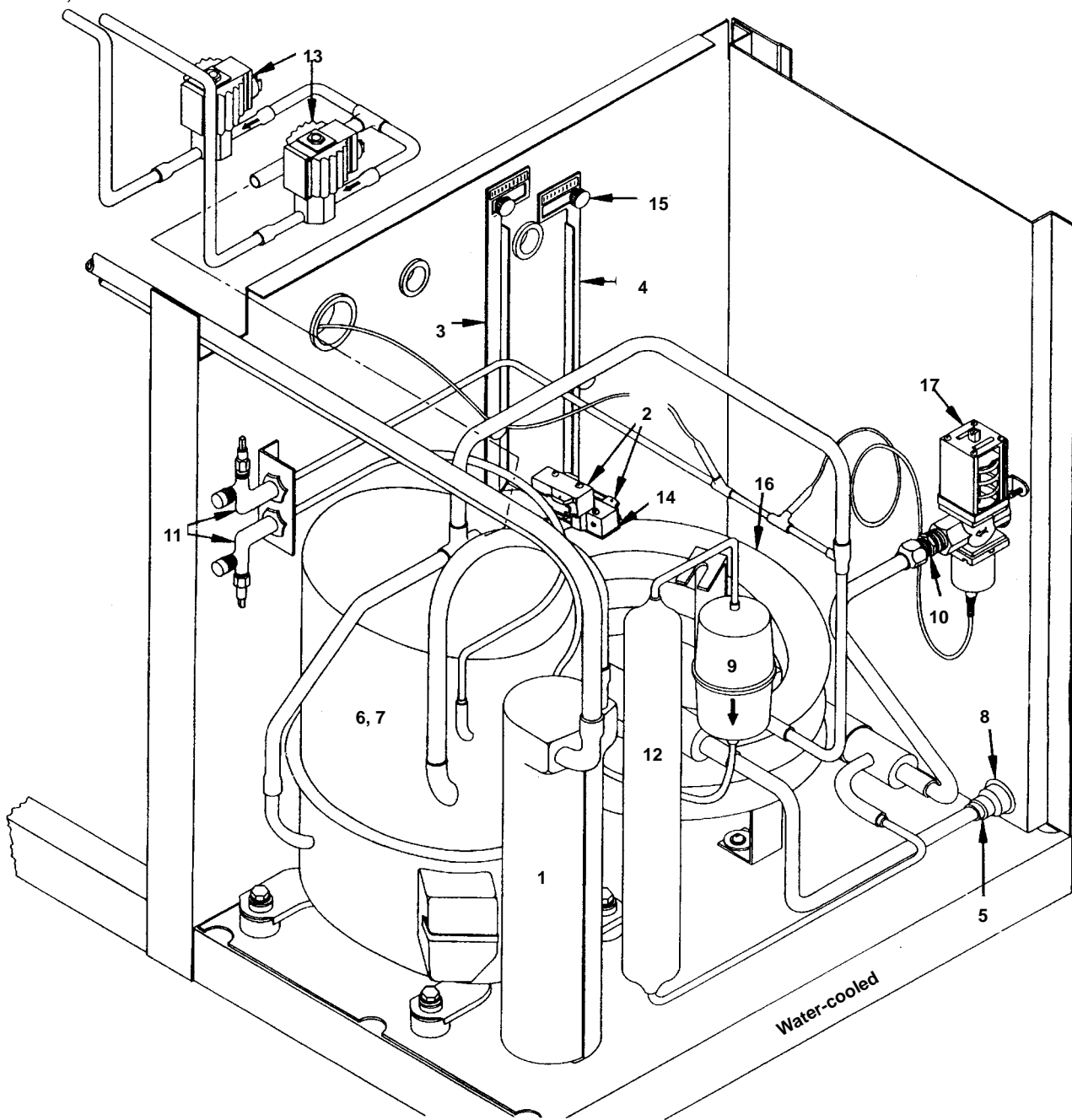
**For 50 cycle units see Page 8.

AIR COOLED CUBER

	PART NO.
9 Fan Blade	No Longer Available
9a Fan Motor	No Longer Available
10 Fan Mounting Bracket	3006843
10 Fan Mounting Grommets	† 5429559
11 Fan Shroud	No Longer Available
12 Process Valve	† 8373109
13 Solenoid Valve	No Longer Available
14 Switch Insulator	No Longer Available
15 Thumbscrew	† 5305049

† Refer to Cross Reference Guide

E1100 WATER-COOLED



1175

WATER COOLED CUBER

PART NO.

1	Accumulator Assembly*	7620943
2	Bin Switch	No Longer Available
3	Bin Switch Bracket (Front)	No Longer Available
4	Bin Switch Bracket (Rear)	No Longer Available
5	Bushing 5/8" to 1/2"	† 1300059
6	Compressor - 1 Phase**	No Longer Available
7	Compressor - 3 Phase**	No Longer Available
8	Drain Adapter	1706021

*Not used after SN 850965601

**For 50 cycle units see Page 8.

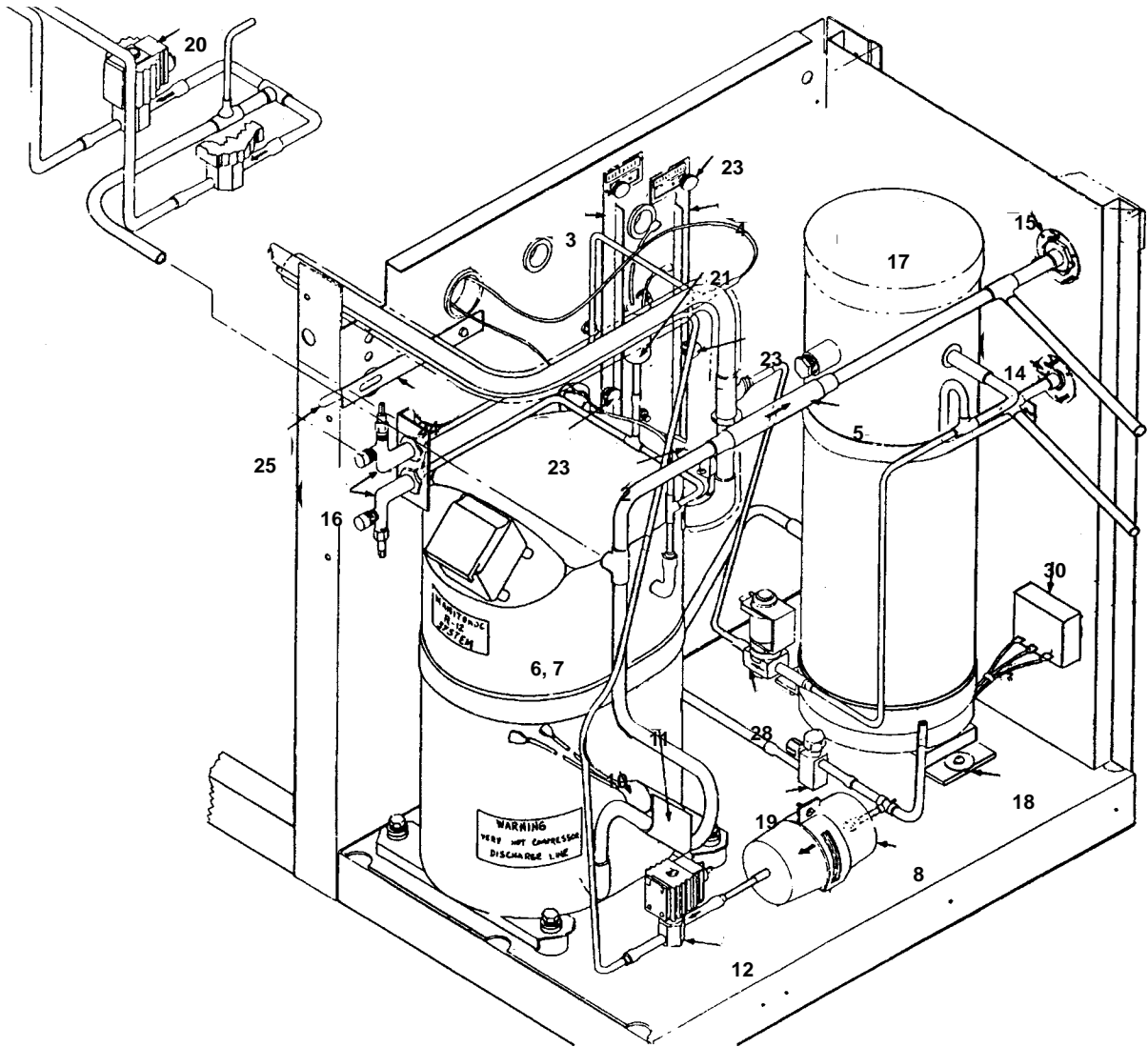
WATER COOLED CUBER

PART NO.

9	Drier	† 8930279
10	Half Union Coupling	8332033
11	Process Valve	† 8373109
12	Receiver	No Longer Available
13	Solenoid Valve	No Longer Available
14	Switch Insulator	No Longer Available
15	Thumbscrew	† 5305049
16	Water Condenser	No Longer Available
17	Water Regulating Valve	8372063

† Refer to Cross Reference Guide

E1100 REMOTE



1176

REMOTE CUBER	PART NO.
1 Accumulator Assembly	No Longer Available
2 Bin Switch	No Longer Available
3 Bin Switch Bracket (Front)	No Longer Available
4 Bin Switch Bracket (Rear)	No Longer Available
5 Check Valve	† 8373159
6 Compressor - 1 Phase*	No Longer Available
7 Compressor - 3 Phase*	No Longer Available
8 Drier	† 8930279
9 Head Pressure Control - in Remote Condenser	
10 Heater	No Longer Available
11 Heater Well	No Longer Available
12 Liquid Solenoid Valve Assembly	2404333
13 Liquid Solenoid Coil Only Alco.	† 2404483
14 Mounting Flange 3/8"	8360053
15 Mounting Flange 1/2"	8360063
16 Process Valve	† 8373109
17 Receiver	No Longer Available
18 Receiver Mounting Bracket	No Longer Available

REMOTE CUBER	PART NO.
19 Receiver Service Valve	† 8373169
20 Solenoid Valve	No Longer Available
21 Suction Pressure Limiter	No Longer Available
22 Switch Insulator	No Longer Available
23 Thumbscrew	† 5305049
24 Toggle Switch Lever	No Longer Available
25 Toggle Switch Cap	No Longer Available
26 Headmaster (if in ice machine)	† 8368049
27 HPR Valve	No Longer Available
28 HPR Solenoid Valve Only 208-230V/50-60 Hz (Danfoss)	† 7630081
29 HPR Timer Kit	No Longer Available
30 HPR Timer Only (7second)	† 2406353

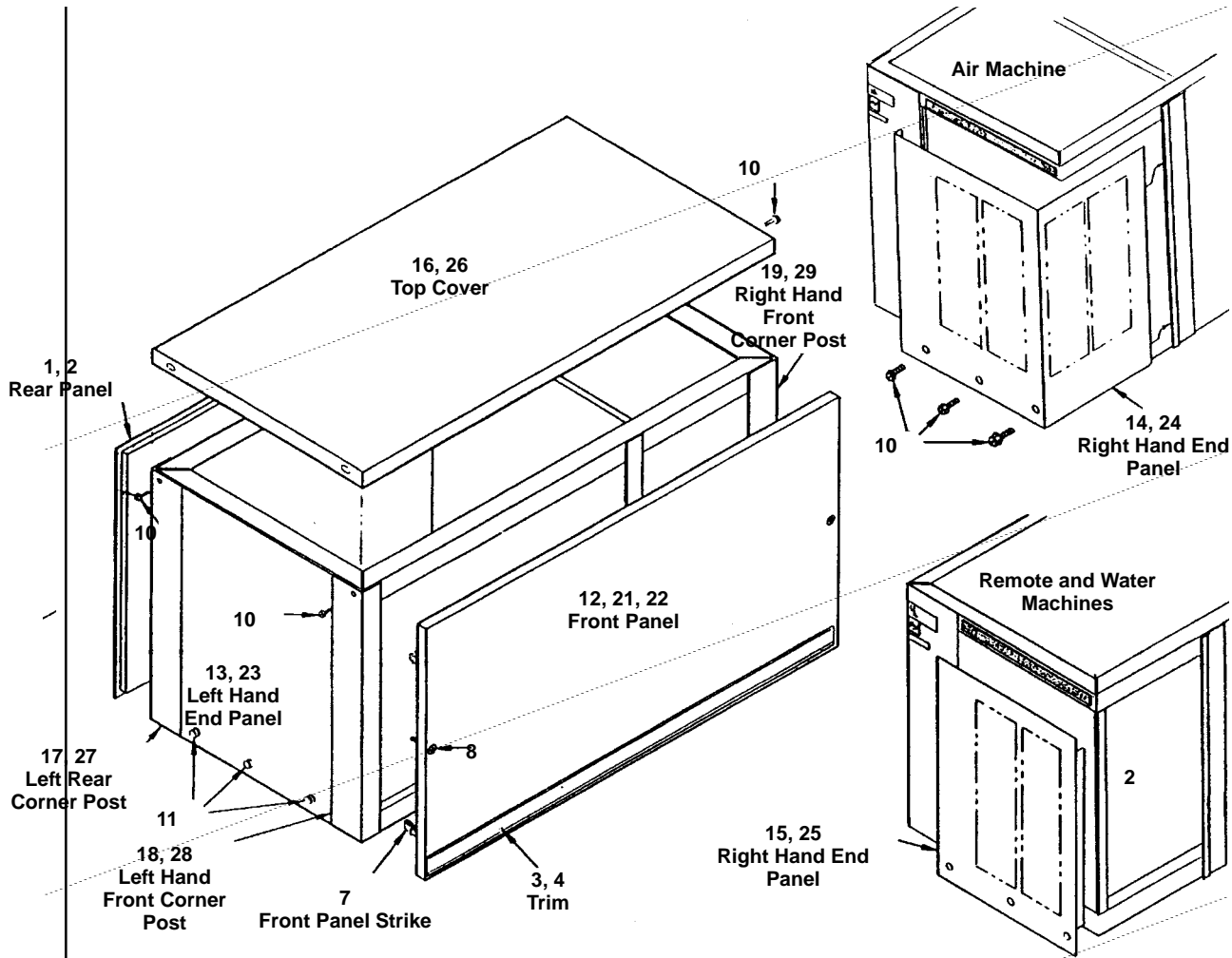
Not shown:

Aero-quip Male Coupling 1/2"	† 8360353
Aero-quip Male Coupling 3/8"	† 8360343
"0" Ring 1/2"	No Longer Available
"0" Ring 3/8"	† 8360139

*For 50 cycle units see Page 8.

† Refer to Cross Reference Guide

E1100



1177

REMOTE CUBER COMMON PARTS

	PART NO.
1 Rear Panel Prior to SN 840563262	No Longer Available
2 Rear Panel After SN 840563262	No Longer Available
2 Water Panel	No Longer Available
2 Remote Panel	No Longer Available
3 Trim - Front Panel	No Longer Available
4 Trim - Front Panel McDonald's	No Longer Available
5 Front Strike & Catch (4 sets)	No Longer Available
6 Front Panel Fastener Catches Only (Pkg. of 12)	No Longer Available
7 Front Panel Fastener Strikes Only (Pkg. of 25)	No Longer Available
8 Front Panel Fastener Screw (Pkg. of 12)	†5026689
9 Front Panel Fastener Cage Nut (Pkg. of 12)	† 5429109
10 Screw, 10-24 x 3/4 Hexhead	† 5202109
11 Thumbscrew	No Longer Available

FAWN

12 Front Panel (Textured fawn)	7620883
13 Left Hand End Panel	No Longer Available
14 Right Hand End Panel (Air)	No Longer Available
15 Right Hand End Panel (Water and remote)	6598714
16 Top Cover	No Longer Available
17 Corner Post Assembly, Left Hand Rear	No Longer Available

PART NO.

REMOTE CUBER

18 Corner Post Assembly, Left Hand Front	No Longer Available
19 Corner Post Assembly, Right Hand Front	No Longer Available
20 Fawn Touch Up Paint	9400931

STAINLESS STEEL

21 Front Panel	No Longer Available
22 Front Panel (McDonald's)	No Longer Available
23 Left Hand End Panel	No Longer Available
24 Right Hand End Panel (Air)	No Longer Available
25 Right Hand End Panel (Water and remote)	No Longer Available
26 Top Cover	No Longer Available
27 Corner Post Assembly, Left Hand Rear	No Longer Available
28 Corner Post Assembly, Left Hand Front	No Longer Available
29 Corner Post Assembly, Right Hand Front	No Longer Available

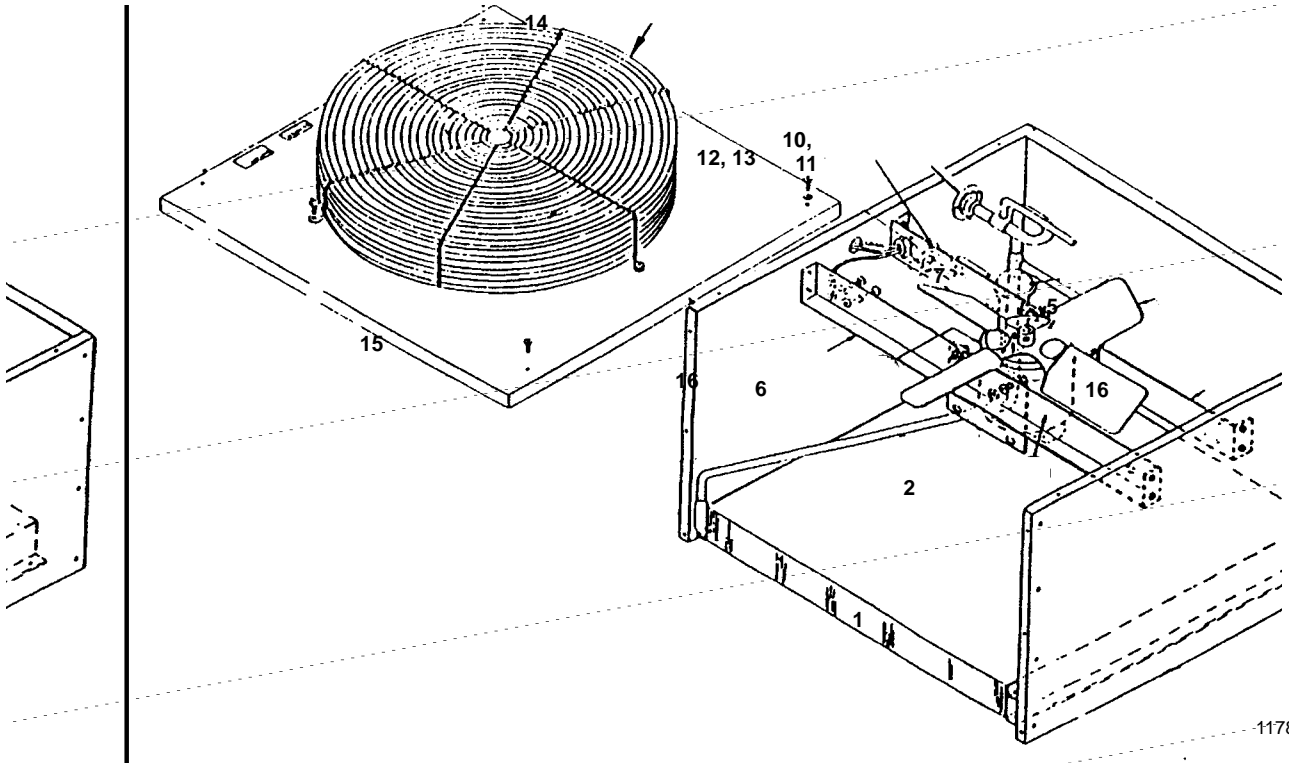
50 CYCLE CUBER

(All parts same except)

	PART NO.
1 Compressor 50 Hz 1 Phase	No Longer Available
2 Relay	No Longer Available
3 Start Capacitor	† 8503143
4 Run Capacitor	No Longer Available
5 Water Pump	† 1480279
6 Compressor 50 Hz 3 Phase	No Longer Available
7 Unitized Sensor Board	No Longer Available

† Refer to Cross Reference Guide

AC1195 REMOTE CONDENSER



1178

	PART NO.
1 Air Condenser	† 8850629
2 Fan Motor, 60 Hz*	† 7629413
3 Fan Motor, 50 Hz*	† 7629413
4 Fan Capacitor*	8503353
5 Fan Blade*	2416113
6 Rain Slinger*	2415053
7 Headmaster Control (See item 19 below)	† 8368049
8 Toggle Switch up to SN 82020001	No Longer Available
9 Toggle Switch after SN 82020001	No Longer Available
10 Coupling Assembly, Male 1/2"	† 8360353
11 Mounting Flange 1/2"	8360063
12 Coupling Assembly, Male 3/8"	† 8360343
13 Mounting Flange 3/8"	8360053
14 Fan Grill	3400643
15 Top Cover	† 6017751
16 Base Bracket	† 6017681
17 Valve Access Fitting Core	No Longer Available
18 Female Coupling Kit (Not shown)	0700623
19 Headmaster Relocation Kit (Used for units originally built with headmaster in ice machine to relocate to condenser)	No Longer Available

*Early models used a single bracket to mount to fan motor. Those units use the following parts:

Fan Motor 60 Hz 230V	† 7619843
Fan Motor 50 Hz 230V	No Longer Available
Rain Shield	No Longer Available
Fan Blade	No Longer Available
Run Capacitor	No Longer Available

† Refer to Cross Reference Guide

INTENTIONALLY LEFT BLANK