



## **Ice Machine Parts List for Series G0200 Cuber Models**

**GR0200A**

**GD0203W**

**GD0202A**

**GY0205W**

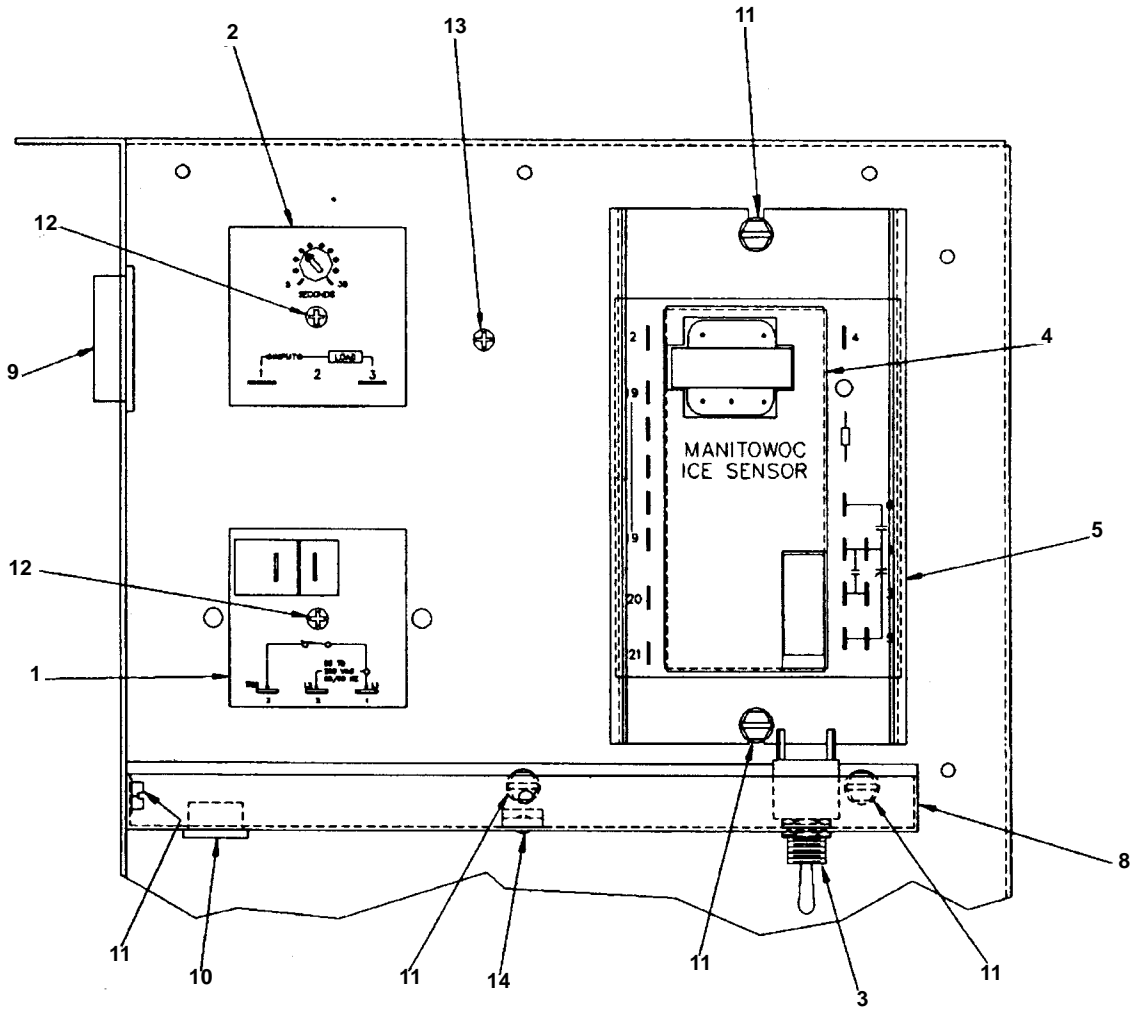
**GY0204A**

**R502 System**

**GR0201W**

**Manufactured January 1991 through May 1993**

# G0200 CONTROL BOX

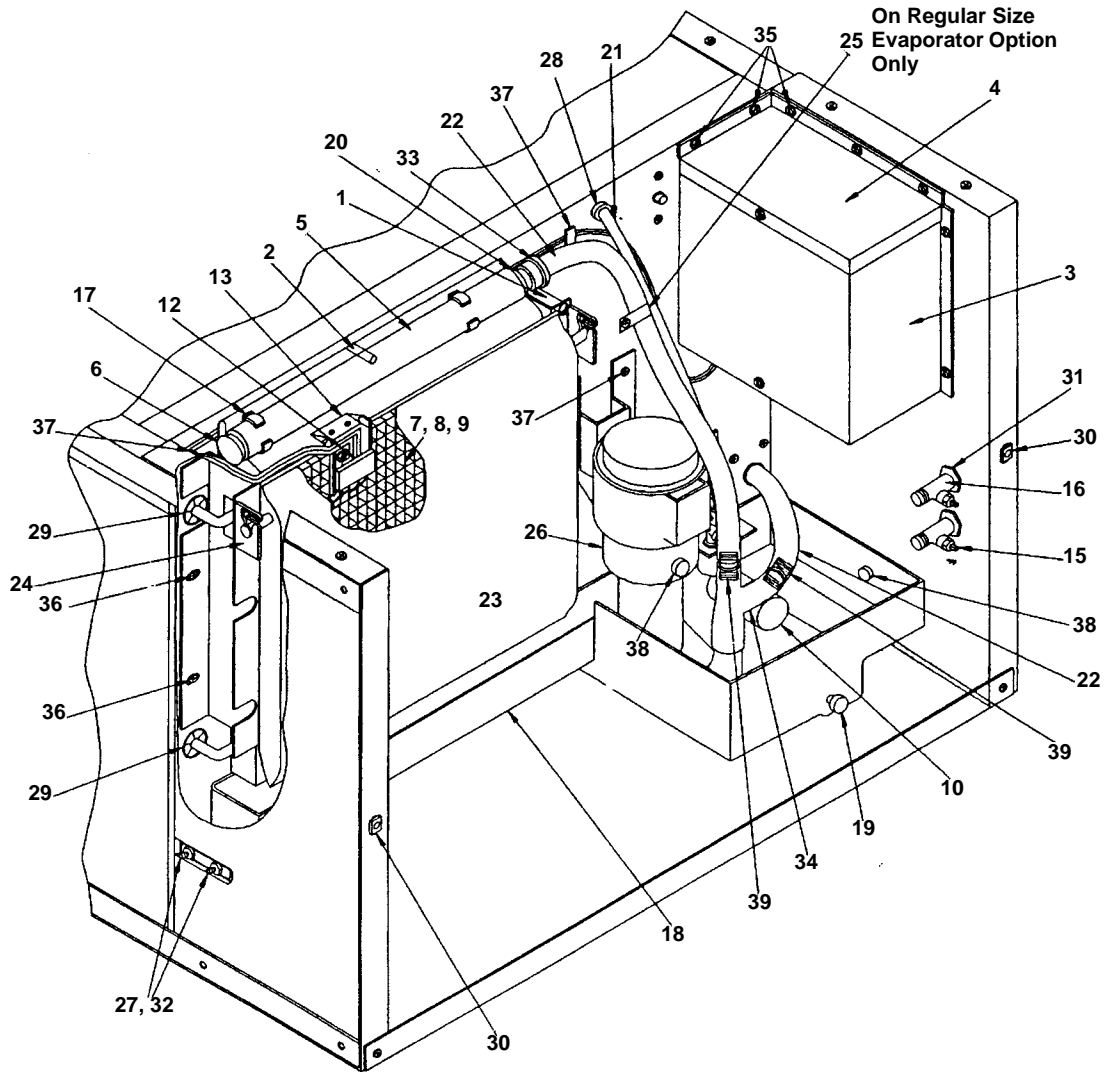


1201

	<b>PART NO.</b>
1 Delay Relay, 7 Second .....	No Longer Available
2 Pump Delay Relay .....	† 2406423
3 Toggle Switch .....	† 2300849
4 Unitized Sensor Assembly .....	† 7623763
5 Mounting Channel .....	No Longer Available
6 Control Box, Top Cover .....	No Longer Available
7 Control Box, Side Cover .....	No Longer Available
8 Control Box, Bottom Cover .....	No Longer Available
9 Bushing for 1-1/2" Hole .....	† 2500139
10 Bushing for 5/8" Hole .....	† 2500169
11 Screw, #10-24 x 0.50 .....	† 5202069
12 Screw, #8-32 x 1.25 .....	† 5026689
13 Screw, #10-24 x 0.50 Grounding .....	† 5029329
14 Nylon Spring Clip .....	† 5650699

† Refer to Cross Reference Guide

# G0200 EVAPORATOR COMPARTMENT

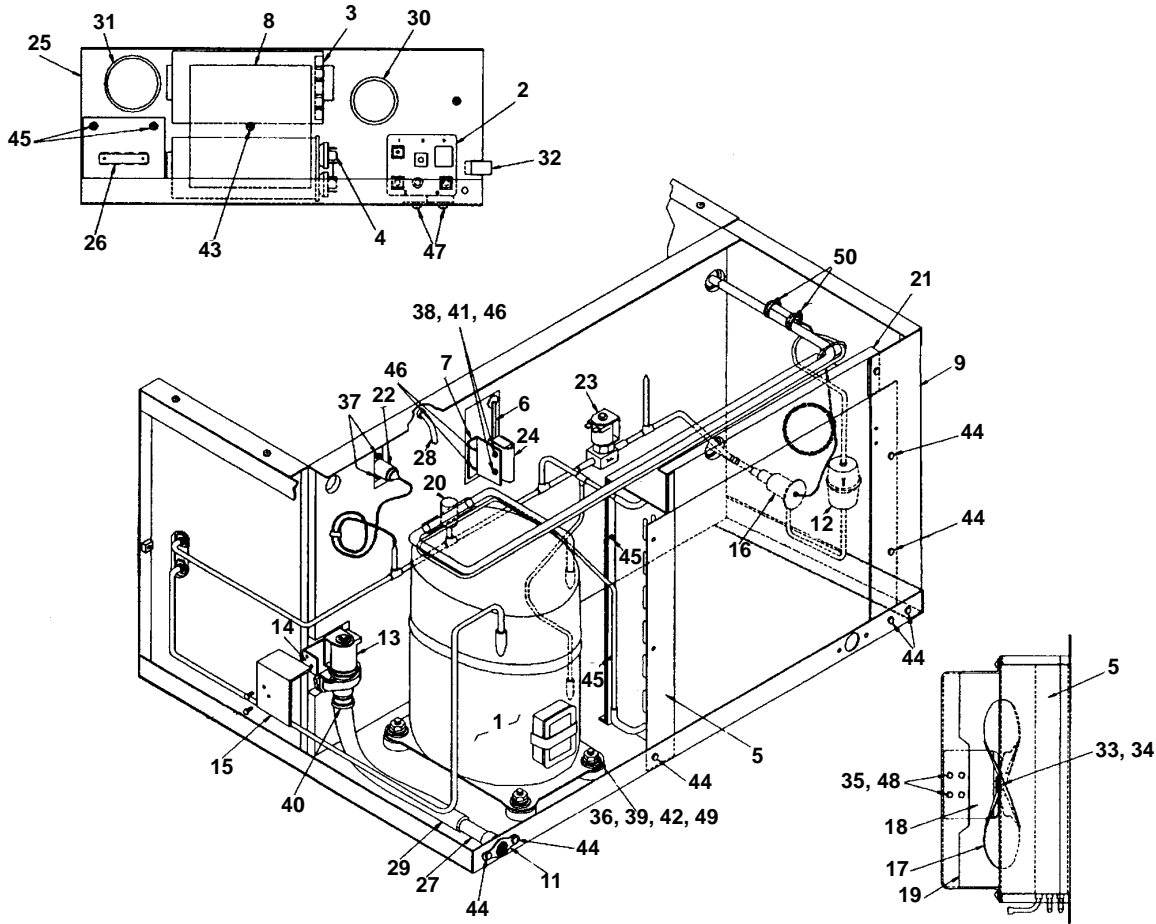


1202

		<b>PART NO.</b>			<b>PART NO.</b>
1	Activating Pin Assembly	7620253	21	Tubing, Poly 0.25 OD	4420291
2	Centering Pin	† 5013139	22	Tubing, Vinyl 0.50 ID	† 4420333
3	Control Box Side Cover	No Longer Available	23	Water Curtain	† 7620393
4	Control Box Top Cover	No Longer Available	24	Water Curtain Bracket	† 7621773
5	Distribution Tube Assembly	No Longer Available	25	Water Flow Clamp	7620543
6	End Plug	† 4408209	26	Water Pump, 115V/60 Hz	† 7623063
7	Evaporator, Dice Cube	No Longer Available	27	Water Trough Support	† 4302019
8	Evaporator, Half Dice Cube	No Longer Available	28	Bushing	† 2500119
9	Evaporator, Regular Cube	No Longer Available	29	Bushing	No Longer Available
10	Float Valve	† 8369049	30	Cagenut	† 5429109
11	Float Valve Mounting Bracket	No Longer Available	31	Hex Locknut	† 5475039
12	Ice Thickness Control	† 7620613	32	Hex Nut, #10-32 x 0.196	† 5429459
13	Ice Thickness Control Bracket	6185814	33	Hose Clamp	† 5650649
14	Process Valve Cover	No Longer Available	34	Reducing Tee	4300573
15	Process Valve Stem Only	8373173	35	Screw, #10-24 x 0.50	† 5202069
16	Process Valve w/Stem	† 8373109	36	Screw, #10-24 x 0.625	† 5202059
17	Spring Clip	No Longer Available	37	Spring Clip, Nylon	† 5650699
18	Sump Trough	No Longer Available	38	Thumb Screw, Plastic	† 5305049
19	Sump Trough Plug	† 4300629	39	Union Connector, White Nylon	8390053
20	Tube Seal	† 4408219			

† Refer to Cross Reference Guide

# G0200 AIR-COOLED

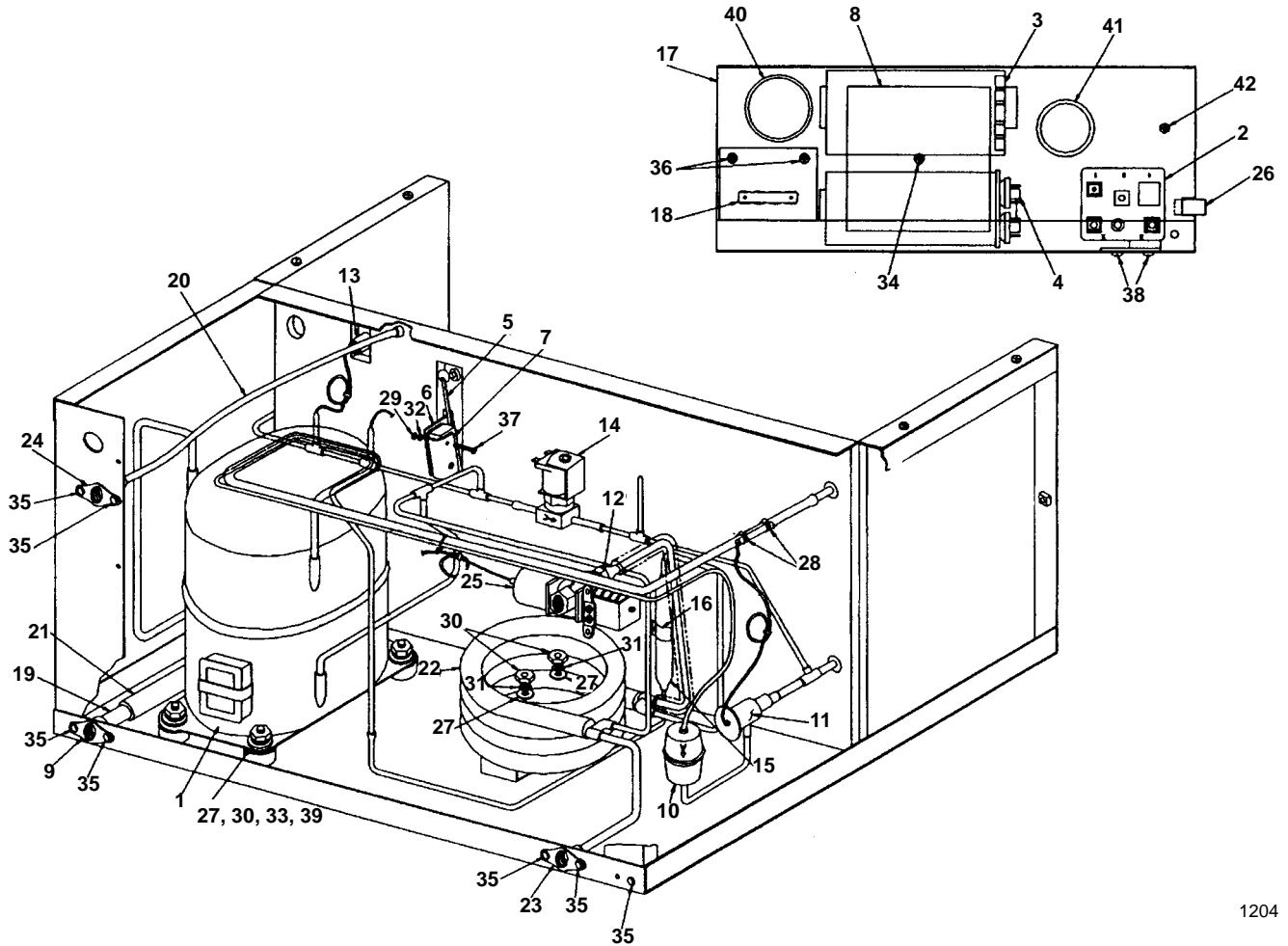


1203

	<b>PART NO.</b>	<b>PART NO.</b>
1 Compressor . . . . .	† No longer Available	26 Terminal Board . . . . .
2 Start Relay . . . . .	8503963	27 Tube, 0.63 OD x 2.0 Long . . . . .
3 Start Capacitor . . . . .	8503143	28 Tubing, Poly, 0.25 OD . . . . .
4 Run Capacitor . . . . .	8504003	29 Tubing, Vinyl, 0.50 ID . . . . .
4a Overload . . . . .	No Longer Available	30 Bushing . . . . .
5 Air Condenser . . . . .	No Longer Available	31 Bushing . . . . .
6 Bin Switch . . . . .	† 2301119	32 Cable Clip . . . . .
7 Bin Switch Mounting Bracket . . . . .	No Longer Available	33 Fan Nut . . . . .
8 Component Retaining Plate . . . . .	No Longer Available	34 Fiber Washer . . . . .
9 Corner Post LH . . . . .	No Longer Available	35 Flatwasher . . . . .
10 Corner Post RH (Not shown) . . . . .	No Longer Available	36 Flatwasher . . . . .
11 Drain Adapter . . . . .	1706021	37 Hex Nut #8-32 . . . . .
12 Drier . . . . .	† 8930259	38 Hex Nut #6-32 . . . . .
13 Dump Valve, 115V . . . . .	000001767	39 Hex Nut #3/8 x 16 . . . . .
14 Dump Valve Mounting Bracket . . . . .	6260314	40 Hose Clamp . . . . .
15 Dump Valve Shield . . . . .	No Longer Available	41 Lockwasher #6 . . . . .
16 Expansion Valve . . . . .	† 7624133	42 Mounting Grommet . . . . .
17 Fan Blade . . . . .	2400151	43 Screw, #10-24 x 2.25 . . . . .
18 Fan Motor, 115V/60 Hz . . . . .	† 2412873	44 Screw, #10-24 x 0.50 . . . . .
19 Fan Motor Bracket . . . . .	6887814	45 Screw, #10-24 x 0.63 . . . . .
20 Fan Pressure Control . . . . .	2301153	46 Screw, #6-32 x 1 . . . . .
21 Fan Shroud . . . . .	No Longer Available	47 Screw, #8-32 x 0.25 . . . . .
22 High Pressure Control . . . . .	No Longer Available	48 Screw, #8-36 x 0.44 . . . . .
23 Hot Gas Solenoid Valve . . . . .	2404863	49 Sleeve . . . . .
24 Mylar Insulator . . . . .	No Longer Available	50 Wormdrive Clamp . . . . .
25 Start Component Box . . . . .	No Longer Available	51 Air Baffle (Not shown) . . . . .

† Refer to Cross Reference Guide

# G0200 WATER-COOLED

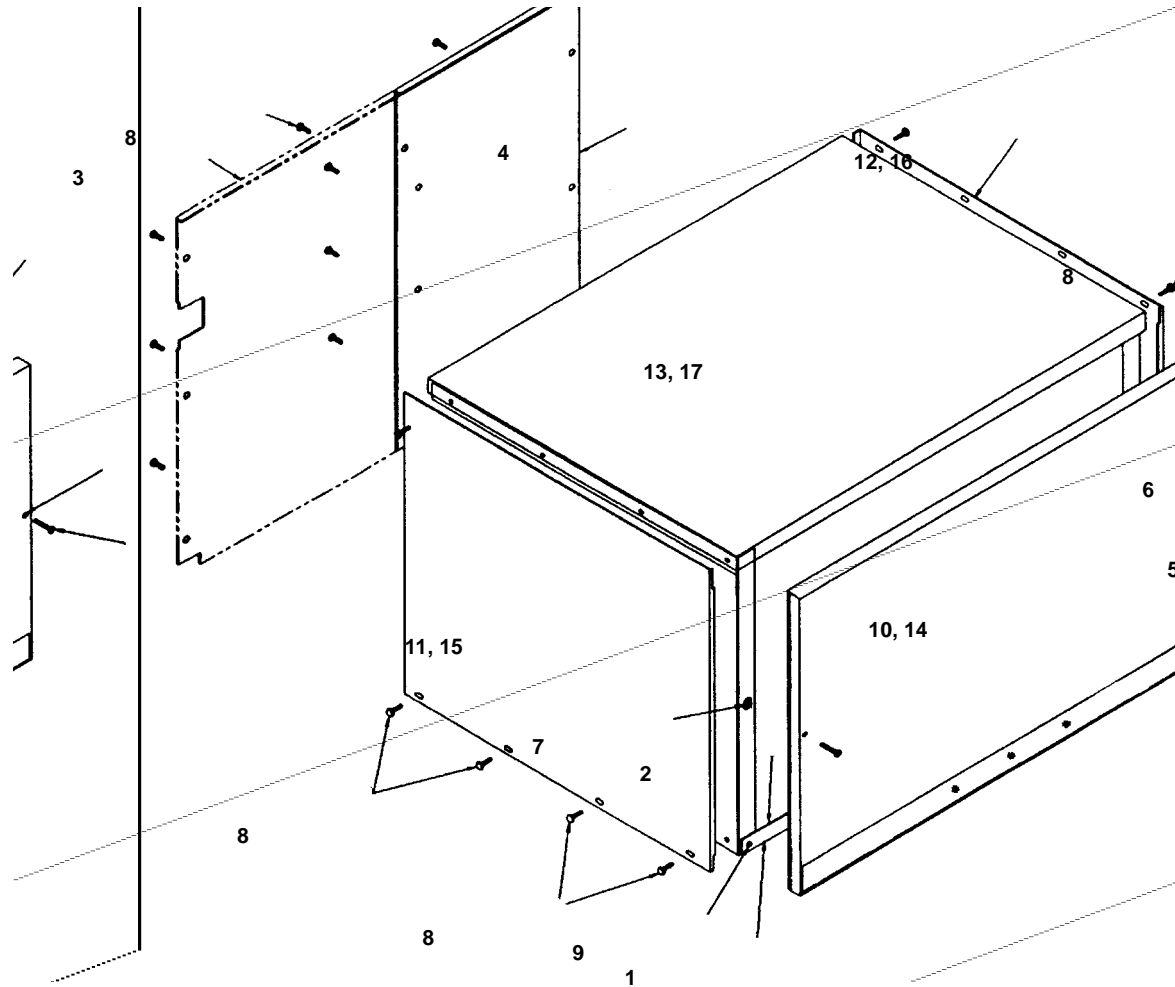


1204

	<b>PART NO.</b>		<b>PART NO.</b>
1 Compressor . . . . .	No Longer Available	22 Water Condenser . . . . .	No Longer Available
2 Start Relay . . . . .	8503963	23 Water Condenser Drain Fitting . . . . .	8706103
3 Start Capacitor . . . . .	8503143	24 Water Inlet Adapter . . . . .	6002421
4 Run Capacitor . . . . .	8504003	25 Water Regulator Valve . . . . .	8372063
4a Overload . . . . .	No Longer Available	26 Cable Clip . . . . .	No Longer Available
5 Bin Switch . . . . .	† 2301119	27 Flatwasher . . . . .	† 5573099
6 Bin Switch Mounting Bracket . . . . .	No Longer Available	28 Hex Head Clamp . . . . .	† 5650529
7 Bin Switch Mylar Insulation . . . . .	No Longer Available	29 Hex Nut #6-32 . . . . .	No Longer Available
8 Component Retaining Plate . . . . .	No Longer Available	30 Hex Nut #3/8 x 16 . . . . .	† 5430029
9 Drain Fitting . . . . .	1706021	31 Lockwasher 3/8" . . . . .	† 5545149
10 Drier . . . . .	† 8930259	32 Lockwasher #6 . . . . .	No Longer Available
11 Expansion Valve . . . . .	† 7624133	33 Mounting Grommet . . . . .	No Longer Available
12 Half Union Coupling . . . . .	8332023	34 Screw, #10-24 x 2.25 . . . . .	No Longer Available
13 High Pressure Control . . . . .	No Longer Available	35 Screw, #10-24 x 0.50 . . . . .	† 5202069
14 Solenoid Valve, Hot Gas . . . . .	2404863	36 Screw, #10-24 x 0.625 . . . . .	† 5202059
15 Receiver . . . . .	000008892	37 Screw, #6-32 x 1.0 . . . . .	No Longer Available
16 Receiver Bracket . . . . .	No Longer Available	38 Screw, #8-32 x 0.25 . . . . .	No Longer Available
17 Start Component Box . . . . .	No Longer Available	39 Sleeve . . . . .	No Longer Available
18 Terminal Board . . . . .	No Longer Available	40 Bushing . . . . .	† 2500139
19 Tube 0.63 OD x 2.0 Long . . . . .	6234514	41 Bushing . . . . .	† 2500019
20 Tubing, Poly, 0.25 OD . . . . .	4420291	42 Grounding Screw . . . . .	† 5029329
21 Tubing, Vinyl 0.50 ID . . . . .	† 4420333		

† Refer to Cross Reference Guide

## G0200 OUTER PANEL



1205

### COMMON PARTS

	<b>PART NO.</b>
1 Front Support Bulkhead . . . . .	† 6580419
2 Front Support Angle . . . . .	No Longer Available
3 Back Panel, Water . . . . .	No Longer Available
4 Back Panel, Air . . . . .	No Longer Available
5 Screw, #8-32 x 1.25 . . . . .	† 5026689
6 Spacer for Front Panel . . . . .	† 3718199
7 Cagenut . . . . .	† 5429109
8 Screw, #10-24 x 0.50 . . . . .	† 5202069
9 Screw, #10-24 x 0.50 . . . . .	† 5202099
Cartoning Assembly . . . . .	† 7108609

### FAWN

10 Front Panel . . . . .	No Longer Available
11 Side Panel, LH . . . . .	No Longer Available
12 Side Panel, RH, Air and Water . . . . .	No Longer Available
13 Top Cover . . . . .	No Longer Available
Fawn Touch Up Paint, 0.6 oz. Bottle . . . . .	9401623
Fawn Touch Up Paint, Aerosol Can . . . . .	9400931

### STAINLESS STEEL

14 Front Panel . . . . .	No Longer Available
15 Side Panel, LH . . . . .	† 6872539
16 Side Panel, RH, Air and Water . . . . .	No Longer Available
17 Top Cover . . . . .	No Longer Available

† Refer to Cross Reference Guide

## G0200 CYCLE APPLICATIONS

### 50 CYCLE APPLICATION

### PART NO.

Compressor . . . . .	No Longer Available
Start Capacitor . . . . .	† 8503143
Start Relay . . . . .	8503813
Run Capacitor . . . . .	8504003
Overload . . . . .	No Longer Available
Dump Valve 208-230V . . . . .	000001768
Fan Motor . . . . .	† 2412883
Power Cord . . . . .	No Longer Available
Reducing Nipple 0.75 x 0.50 . . . . .	8700383
Reducing Nipple 0.75 x 0.38 . . . . .	8700393
Solenoid, Hot Gas . . . . .	No Longer Available
Strain Relief Bushing . . . . .	No Longer Available
Terminal Block . . . . .	No Longer Available
Toggle Switch . . . . .	No Longer Available
Unitized Sensor Assembly . . . . .	No Longer Available
Water Pump . . . . .	† 7626013

### 230V/60 CYCLE APPLICATION

Compressor . . . . .	No Longer Available
Start Relay . . . . .	8503813
Overload . . . . .	No Longer Available
Start Capacitor . . . . .	8503143
Run Capacitor . . . . .	8504003
Fan Motor . . . . .	† 2412883
Unitized Sensor Assembly . . . . .	† 7623753
Water Pump . . . . .	† 7626013

† Refer to Cross Reference Guide

**INTENTIONALLY LEFT BLANK**