



Ice Machine Parts List for Series G0400 Cuber Models

GR0400A

GR0401W

GD0402A

GD0403W

GY0404A

GY0405W

GR0490N

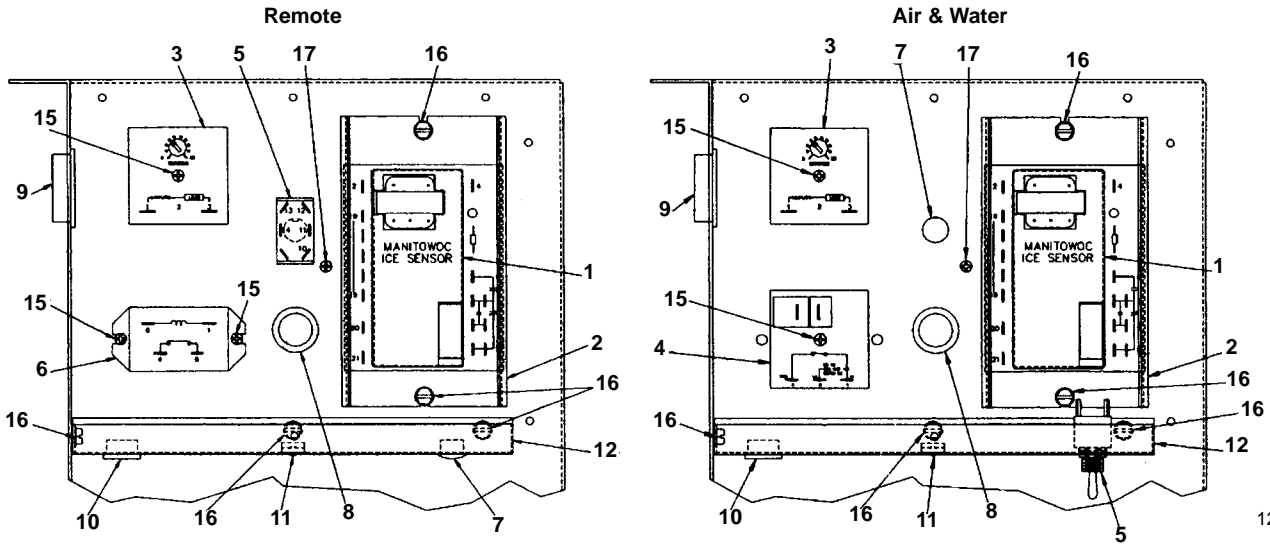
GD0492N

GY0494N

R502 System

Manufactured December 1990 through September 1992

G0400 CONTROL BOX

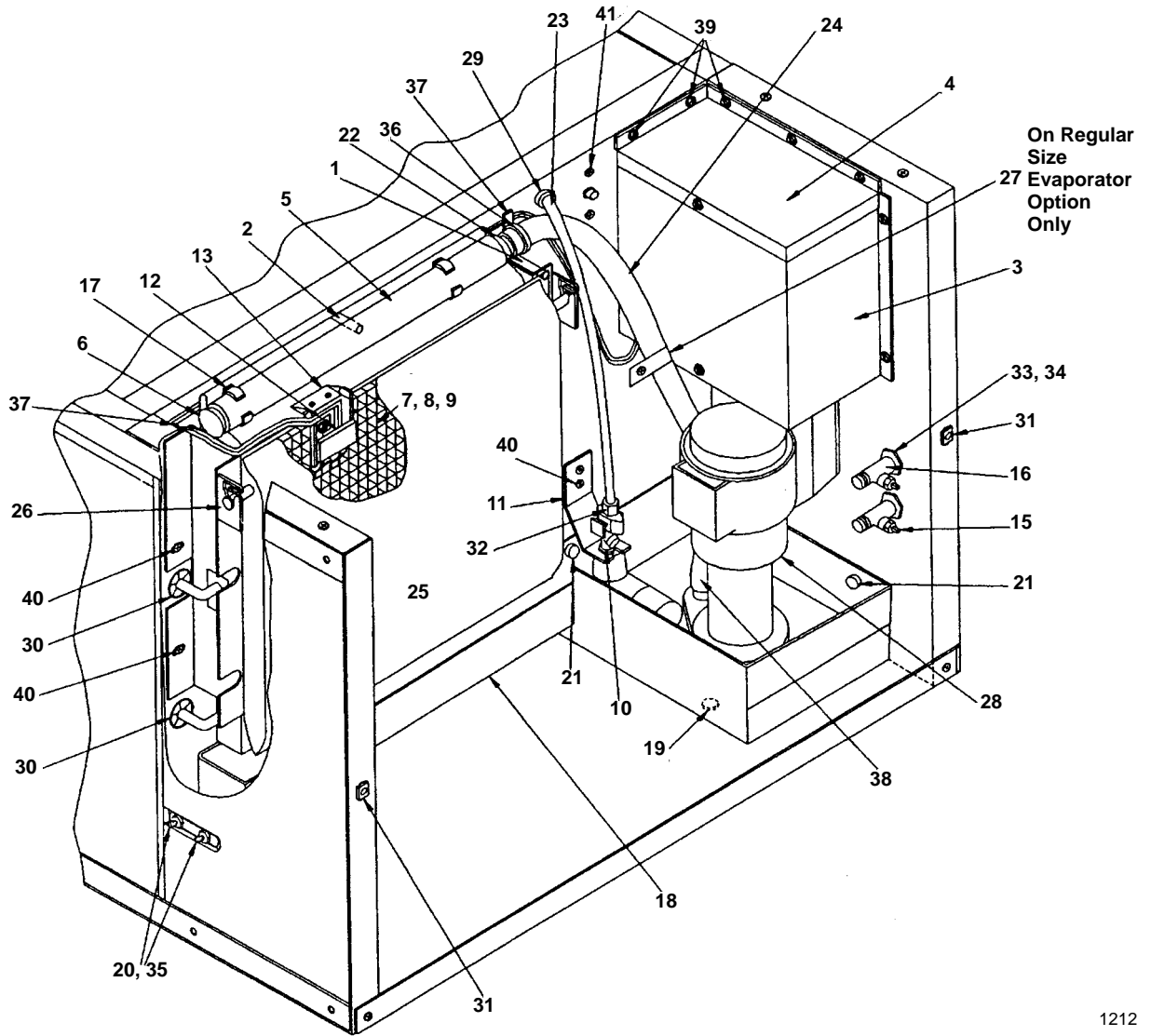


1211

		PART NO.
1	Unitized Sensor Board	† 7623763
2	Mounting Channel	No Longer Available
3	Pump Delay Timer	† 2406423
4	Delay Relay, 7 Second	No Longer Available
5	Toggle Switch	† 2300849
6	Relay (Remote only)	† 2408223
7	Hole Plug	No Longer Available
8	Bushing	† 2501409
9	Bushing	† 2500139
10	Bushing	† 2500169
11	Nylon Spring Clip	† 5650699
12	Control Box, Bottom Cover	No Longer Available
13	Control Box, Side Cover	No Longer Available
14	Control Box, Top Cover	No Longer Available
15	Screw, #8-32 x 1.25	† 5026689
16	Screw, #10-24 x 0.50	† 5202069
17	Screw, #10-24 x 0.50 Grounding	† 5029329
18	Water Shield Used When Stacking	No Longer Available

† Refer to Cross Reference Guide

G0400 EVAPORATOR COMPARTMENT

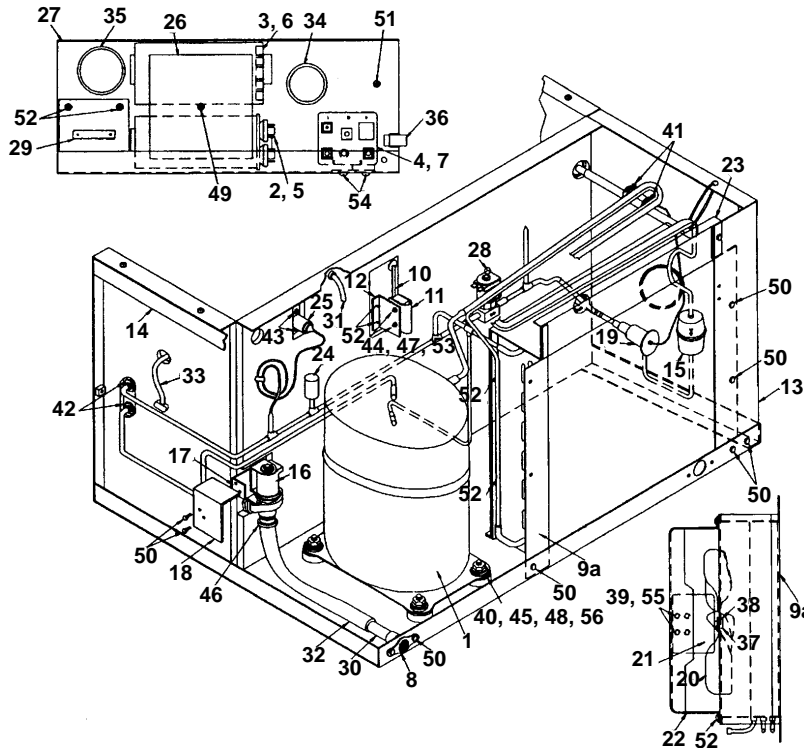


1212

PART NO.		PART NO.	
1	Activating Pin	7620253	
2	Centering Pin	† 5013139	
3	Control Box, Side Cover	No Longer Available	
4	Control Box, Top Cover	No Longer Available	
5	Distribution Tube Assembly	No Longer Available	
6	End Plug	† 4408209	
7	Evaporator, Dice Cube	No Longer Available	
8	Evaporator, Half Dice Cube	No Longer Available	
9	Evaporator, Regular Cube	† 6843119	
10	Float Valve	† 8369049	
11	Float Valve Mounting Bracket	† 7621403	
12	Ice Thickness Control	† 7620613	
13	Ice Thickness Control Bracket	6185814	
14	Process Valve Cover	No Longer Available	
15	Process Valve Stem Only	8373173	
16	Process Valve With Stem	† 8373109	
17	Spring Clip	No Longer Available	
18	Sump Trough	No Longer Available	
19	Sump Trough Plug	† 4300629	
20	Sump Trough Support	† 4302019	
21	Sump Trough Thumb Screw	† 5305049	
22	Tube Seal	† 4408219	
23	Tubing, Poly 0.25 OD	4420291	
24	Tubing, Vinyl 0.50 ID	† 4420333	
25	Water Curtain	† 7619873	
26	Water Curtain Bracket	† 7621773	
27	Water Flow Clamp	7620543	
28	Water Pump	† 7623063	
29	Bushing for 1/4" Tube	† 2500119	
30	Bushing 1-3/16"	No Longer Available	
31	Cagenut #8-32	† 5429109	
32	Compression Nut	† 5650729	
33	Fiber Washer	No Longer Available	
34	Hex Locknut	† 5475039	
35	Hex Nut, Nylon	† 5429459	
36	Hose Clamp	† 5650649	
37	Nylon Spring Clip	† 5650699	
38	Reducing Tee	4300573	
39	Screw, #10-24 x 0.50	† 5202069	
40	Screw, #10-24 x 0.625	† 5202059	
41	Screw, #8-32 x 1.00	No Longer Available	

† Refer to Cross Reference Guide

G0400 AIR-COOLED

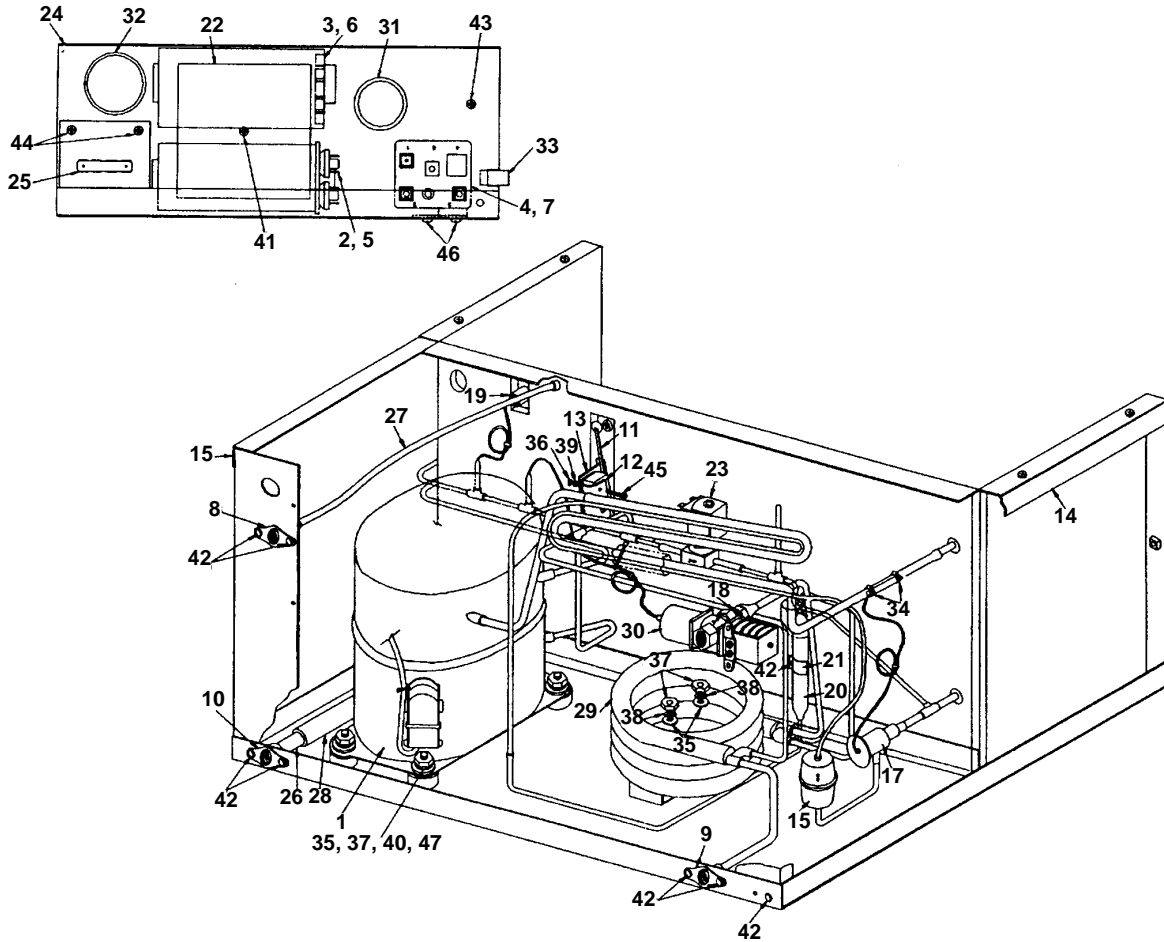


1213

		PART NO.		PART NO.
1	Compressor With All Components . . .	† 7628103	26	Retaining Plate No Longer Available
	Tecumseh		27	Start Component Box No Longer Available
2	Run Capacitor	† 8503423	28	Solenoid Valve, Hot Gas 2404863
3	Start Capacitor	8503723	29	Terminal Board No Longer Available
4	Start Relay (Tec AK162AT032G4) . . .	† 2007993	30	Tube, 0.63 OD 6234514
	Overload	8504293	31	Tubing, Poly 0.25 OD 4420291
4a	Start Relay (Tec AK162AT036G4D) . .	2007993	32	Tubing, Vinyl 0.50 ID † 4420333
	Overload for AK170AT039A40	8505553	33	Water Pump Lead No Longer Available
	Copeland		34	Bushing for 1.1875 Hole † 2500019
5	Run Capacitor	† 8503413	35	Bushing for 1.50 Hole † 2500139
6	Start Capacitor	8503143	36	Cable Clip No Longer Available
7	Start Relay	8503973	37	Fan Nut † 5475079
8	Adapter, Sump Drain	1706021	38	Fiber Washer No Longer Available
9	Air Baffle (Not shown)	No Longer Available	39	Flatwasher † 5504269
9a	Air Condenser	No Longer Available	40	Flatwasher † 5573099
10	Bin Switch	† 2301119	41	Hex Head Clamp † 5650529
11	Bin Switch Insulation	No Longer Available	42	Hex Locknut † 5475039
12	Bin Switch Mounting Bracket	No Longer Available	43	Hex Nut † 5429069
13	Corner Post Weldment LH	No Longer Available	44	Hex Nut No Longer Available
14	Corner Post Weldment RH	No Longer Available	45	Hex Nut † 5430029
15	Drier	† 8930259	46	Hose Clamp † 5650709
16	Dump Valve 115V	000001767	47	Lockwasher No Longer Available
17	Dump Valve Mounting Bracket	6260314	48	Mounting Grommet No Longer Available
18	Dump Valve Shield	No Longer Available	49	Screw, #10-24 x 2.25 No Longer Available
19	Expansion Valve	† 7624113	50	Screw, #10-24 x 0.50 † 5202069
20	Fan Blade	2416103	51	Screw, #10-24 x 0.50 Grounding † 5029329
21	Fan Motor 115V/60 Hz	† 2412373	52	Screw, #10-24 x 0.63 † 5202059
22	Fan Motor Bracket	6887814	53	Screw, #6-32 x 1.00 No Longer Available
23	Fan Shroud	No Longer Available	54	Screw, #8-32 x 0.25 SS No Longer Available
24	Fan Pressure Control	2301153	55	Screw, #8-36 x 0.44 † 5025599
25	High Pressure Control	No Longer Available	56	Sleeve No Longer Available

† Refer to Cross Reference Guide

G0400 WATER-COOLED

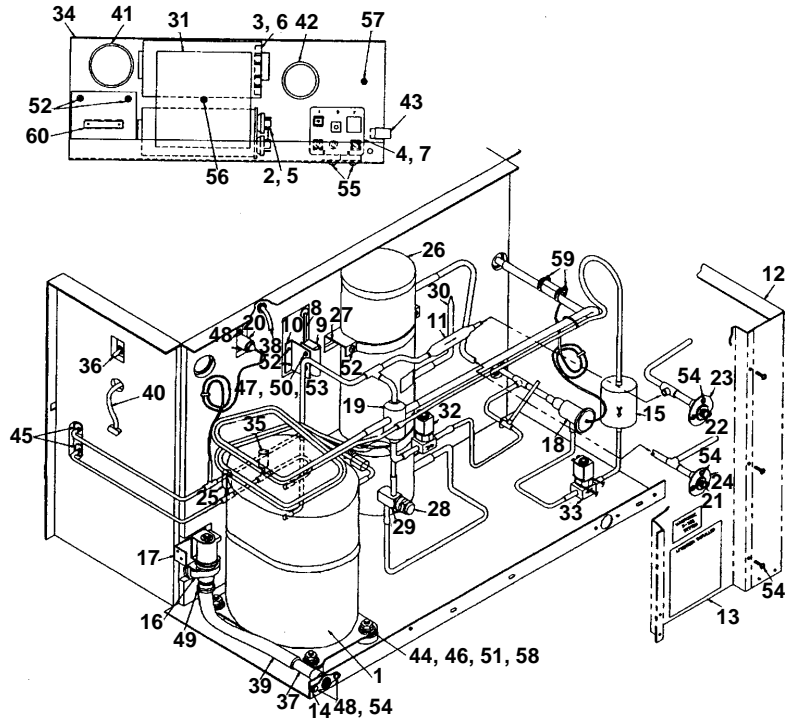


1214

		PART NO.		PART NO.
1	Compressor With All Components . . .	† 7628103	22	Retaining Plate No Longer Available
	Tecumseh:		23	Solenoid Valve, Hot Gas 2404863
2	Run Capacitor	† 8503423	24	Start Component Box No Longer Available
3	Start Capacitor	8503723	25	Terminal Board No Longer Available
4	Start Relay (Tec AK162AT032G4) . . .	† 2007993	26	Tube 0.63 OD 6234514
	Overload	8504293	27	Tubing, Poly 0.25 OD 4420291
4a	Start Relay (Tec AK162AT036G4D) . .	2007993	28	Tubing, Vinyl 0.50 ID † 4420333
	Overload for AK170AT039A40	8505553	29	Water Condenser No Longer Available
	Copeland:		30	Water Regulator Valve 8372063
5	Run Capacitor	† 8503413	31	Bushing for 1.1875 Hole † 2500019
6	Start Capacitor	8503143	32	Bushing for 1.50 Hole † 2500139
7	Start Relay	8503973	33	Cable Clip No Longer Available
8	Adapter, Water Inlet	6002421	34	Clamp w/Thumbscrew † 5650529
9	Adapter, Condenser Drain	8706103	35	Flatwasher † 5573099
10	Adapter, Sump Drain	1706021	36	Hex Nut No Longer Available
11	Bin Switch	† 2301119	37	Hex Nut † 5430029
12	Bin Switch Insulation No Longer Available		38	Lockwasher † 5545149
13	Bin Switch Mounting Bracket No Longer Available		39	Lockwasher No Longer Available
14	Corner Post LH No Longer Available		40	Mounting Grommet No Longer Available
15	Corner Post RH No Longer Available		41	Screw, #10-24 x 2.25 No Longer Available
16	Drier † 8930259		42	Screw, #10-24 x 0.50 † 5202069
17	Expansion Valve † 7624113		43	Screw, #10-24 x 0.50 Grounding † 5029329
18	Half Union Coupling 8332023		44	Screw, #10-24 x 0.625 † 5202059
19	High Pressure Control No Longer Available		45	Screw #6-32 x 1.00 No Longer Available
20	Receiver 000008892		46	Screw, #8-32 x 0.25 SS No Longer Available
21	Receiver Bracket No Longer Available		47	Sleeve No Longer Available

† Refer to Cross Reference Guide

G0400 REMOTE

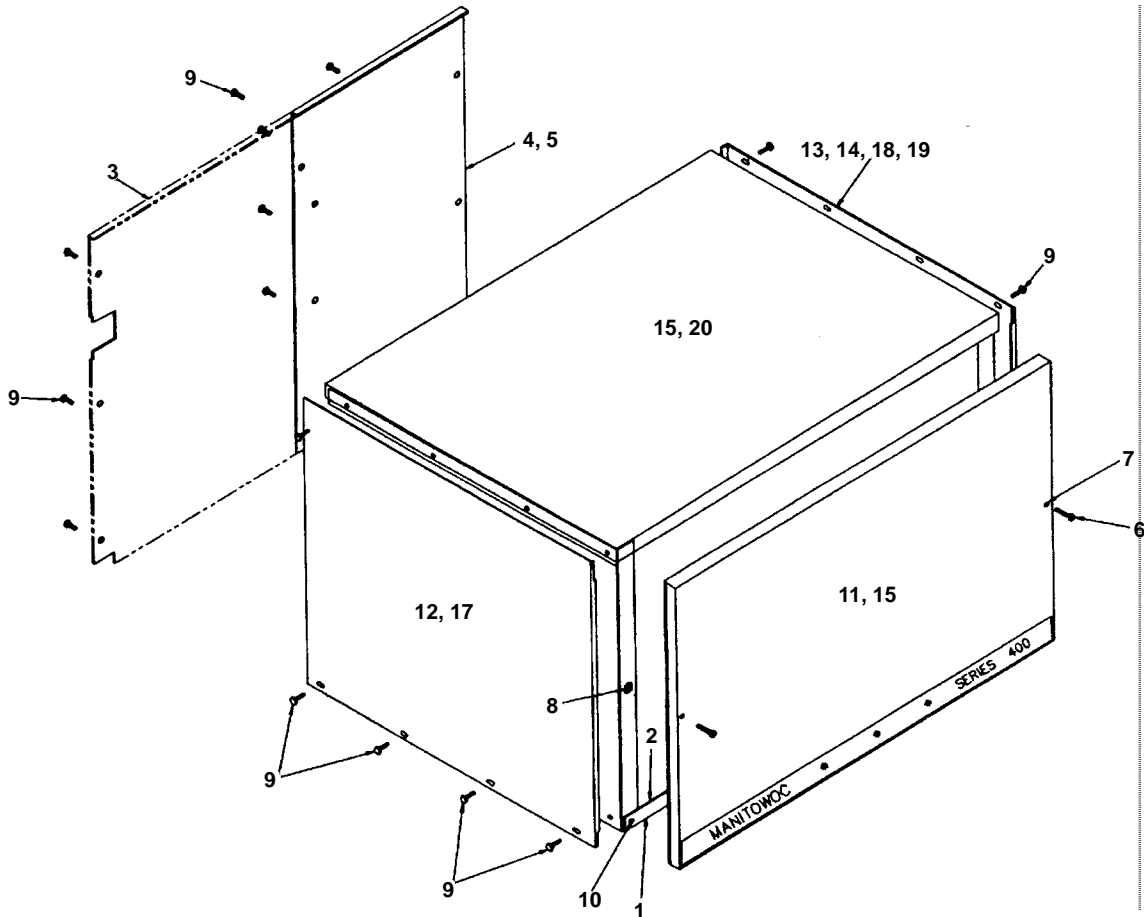


1215

	PART NO.		PART NO.
1 Compressor, 115V/60 Hz	† 7628103	28 Receiver Service Valve Cap Only	5650753
Tecumseh:		29 Receiver Service Valve w/Cap	† 8373169
2 Run Capacitor	† 8503423	30 Receiver Soft Safety Plug	No Longer Available
3 Start Capacitor	8503723	31 Retaining Plate	No Longer Available
4 Start Relay (Tec AK162AT032G4)	† 2007993	32 Solenoid Valve, Hot Gas	2404863
Overload	8504293	33 Solenoid Valve, Liquid Line	
4a Start Relay (Tec AK162AT036G4D)	2007993	115V/60 Hz (Danfoss)	† 7630021
Overload for AK170AT039A40	8505553	34 Start Component Box	No Longer Available
Copeland:		35 Suction Pressure Switch	No Longer Available
5 Run Capacitor	† 8503413	36 Toggle Switch	† 2300849
6 Start Capacitor	8503143	37 Tube, 0.63 OD x 2	6234514
7 Start Relay	8503973	38 Tubing, Poly 0.25 OD	4420291
8 Bin Switch	† 2301119	39 Tubing, Vinyl 0.50 ID	† 4420333
9 Bin Switch Insulation	No Longer Available	40 Water Pump Lead	No Longer Available
10 Bin Switch Mounting Bracket	No Longer Available	41 Bushing For 1.50 Hole	† 2500139
11 Check Valve	† 8373149	42 Bushing For 1.1875 Hole	† 2500019
12 Corner Post Weldment LH	No Longer Available	43 Cable Clip	No Longer Available
13 Coupling Mounting Post	No Longer Available	44 Flatwasher	† 5573099
14 Drain Adapter	1706021	45 Hex Locknut	† 5475039
15 Drier	† 8930279	46 Hex Nut	† 5430029
16 Dump Valve 115V	000001767	47 Hex Nut	No Longer Available
17 Dump Valve Mounting Bracket	6260314	48 Hex Nut	† 5429069
18 Expansion Valve	† 7624113	49 Hose Clamp	† 5650709
19 Harvest Cycle Limiter	No Longer Available	50 Lockwasher	No Longer Available
20 High Pressure Control	No Longer Available	51 Mounting Grommet	No Longer Available
21 Male Coupling, 1-1/8-12 THD	No Longer Available	52 Screw, #10-24 x 0.625	† 5202059
22 Male Coupling, 1-7/16-16 THD	No Longer Available	53 Screw, #6-32 x 1.00	No Longer Available
23 Male Coupling Flange	8360173	54 Screw, #24 x 0.50	† 5202069
24 Male Coupling Flange	8360183	55 Screw, #8-32 x 0.25 SS	No Longer Available
25 Pressure Control	2355273	56 Screw, #10-24 x 2.25	No Longer Available
26 Receiver	† 7629583	57 Screw, #10-24 x 0.50 Grounding	† 5029329
27 Receiver Mounting Bracket	No Longer Available	58 Sleeve	No Longer Available
		59 Clamp With Thumbscrew	† 5650529
		60 Terminal Board	No Longer Available

† Refer to Cross Reference Guide

G0400 OUTER PANELS



1216

COMMON PARTS

	PART NO.
1 Front Support Bulkhead	† 6580419
2 Front Support Angle	No Longer Available
3 Back Panel, Water	† 6590514
4 Back Panel, Air.	No Longer Available
5 Back Panel, Remote	No Longer Available
6 Screw, #8-32 x 1.50	† 5026689
7 O-Ring	† 3718199
8 Cagenut	† 5429109
9 Screw, #10-24 x 0.50	† 5202069
10 Screw, #10-24 x 0.50	† 5202099

FAWN

11 Front Panel, Textured Fawn	No Longer Available
12 Side Panel, LH.	No Longer Available
13 Side Panel, RH, Air and Water.	No Longer Available
14 Side Panel, RH, Remote	No Longer Available
15 Top Cover.	No Longer Available
Fawn Touch Up Paint, 0.6 Oz. Bottle	9401623
Fawn Touch Up Paint, Aerosol Can	9400931

STAINLESS STEEL

16 Front Panel.	No Longer Available
17 Side Panel, LH.	No Longer Available
18 Side Panel, RH, Air and Water.	No Longer Available
19 Side Panel, RH, Remote	No Longer Available
20 Top Cover.	No Longer Available

† Refer to Cross Reference Guide

G0400 CYCLE APPLICATIONS

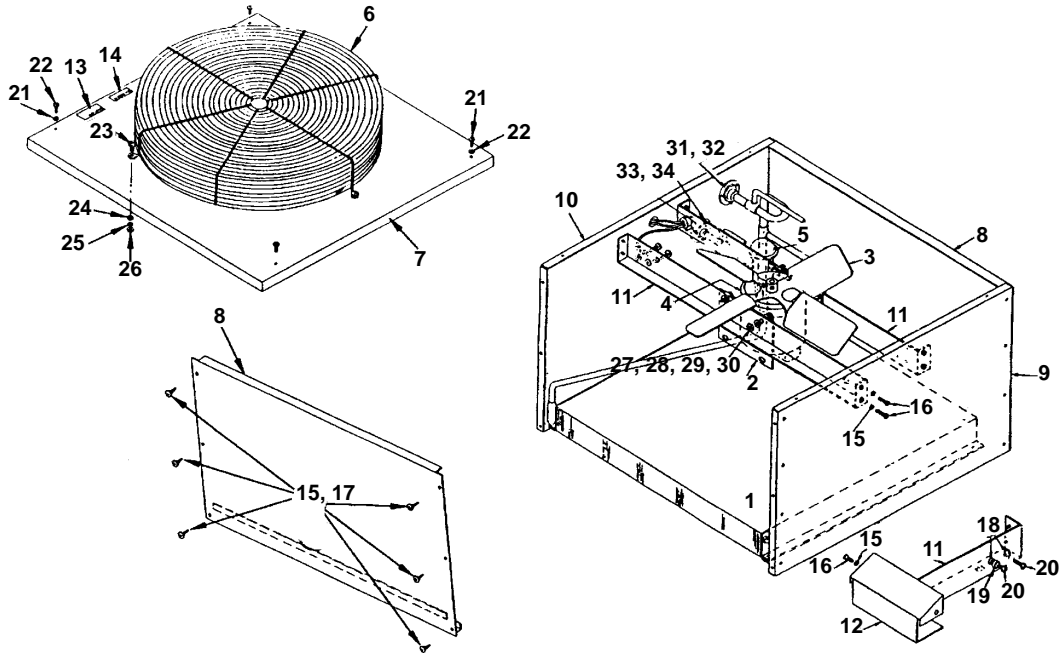
50 CYCLE APPLICATION

	PART NO.
Compressor	† 7628113
Start Capacitor	8503723
Start Relay	8504063
Run Capacitor	8504003
Overload for AK94585	No Longer Available
Overload for AK170JT039A4D	8505573
Dump Valve 208-230V	000001768
Fan Motor	No Longer Available
Power Cord	No Longer Available
Strain Relief	No Longer Available
Reducing Nipple 0.75 x 0.50	8700383
Reducing Nipple 0.75 x 0.38	8700393
Solenoid, Hot Gas	No Longer Available
Terminal Block	No Longer Available
Toggle Switch	No Longer Available
Unitized Sensor Assembly	No Longer Available
Water Pump	† 7626013

G0400 230V/60 CYCLE APPLICATION

Compressor	† 7628123
Run Capacitor	8504003
Start Relay for AK9458J	No Longer Available
Start Relay for AK170ET039A4D	8504553
Start Capacitor	8503723
Overload for AK9458J	No Longer Available
Overload for AK170ET039A4D	8505563
Fan Motor	No Longer Available
Unitized Sensor Module	† 7623753

REMOTE CONDENSER AC0496

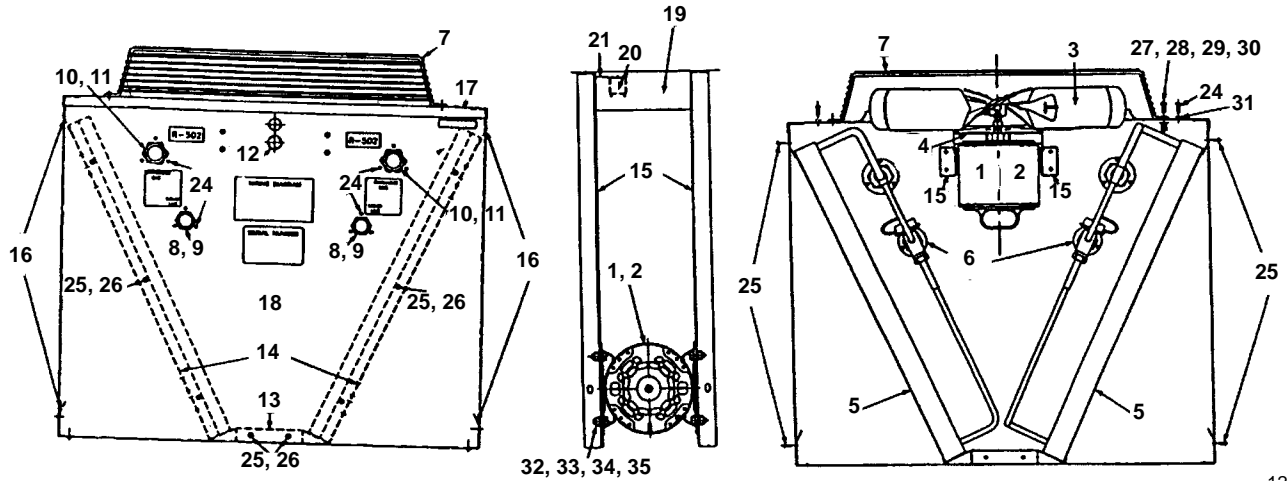


1218

		PART NO.
1	Air Condenser	† 8850639
2	Fan Motor 115V/60 Hz	† 7629423
	Fan Motor 230V/50-60 Hz	† 7629413
3	Fan Blade	2416113
4	Rain Slinger	2415053
5	Headmaster Control R502	† 8368069
6	Fan Grill	3400643
7	Top Cover	† 6017751
8	Right and Left Hand End Panel	No Longer Available
9	Front Panel	† 6017721
10	Rear Panel Weldment	No Longer Available
11	Fan Mounting Brackets (Uses 2)	† 6017681
12	Electrical Cover	† 6017761
13	Label - Caution	8130361
14	Label - Danger	† 8136043
15	Lockwasher #8	† 5544599
16	Screw, #8-32 x 1/2	† 5026249
17	Screw, #8 x 1/2	† 5121539
18	Lockwasher #10	† 5573209
19	Cup Washer	2510253
20	Screw, #10-32 x 1/2	† 5027019
21	Lockwasher #10	† 5544649
22	Screw, #10-24 x 5/8	† 5202059
23	Screw, 1/4-20 x 5/8	† 5033459
24	Flatwasher 1/4"	† 5573049
25	Lockwasher 1/4" Split	† 5545119
26	Hex Nut, 1/4-20	† 5429529
27	Lockwasher 5/16 Split	† 5573139
28	Flatwasher	† 5573099
29	Hex Nut 5/16-18	† 5429759
30	Screw, 5/16-18 Hex Head	† 5035659
31	Coupling 1/2 OD Tube	No Longer Available
32	Mounting Flange	8360173
33	Coupling 3/8 OD Tube	No Longer Available
34	Mounting Flange for Male Coupling, 1-1/8" x 3/8 OD	8360183

† Refer to Cross Reference Guide

REMOTE CONDENSER DC0496



1219

		PART NO.
1	Fan Motor 115V/60 Hz	† 7629423
2	Fan Motor 230V/50-60 Hz	† 7629413
3	Fan Blade	2416113
4	Rain Slinger	2415053
5	Air Condenser DC0496A	† 8850639
6	Headmaster Control - R502	† 8368069
7	Fan Guard	3400643
8	Male Coupling, 1-1/8 x 3/8 OD	No Longer Available
9	Coupling Flange for Male Coupling, 1-1/8" x 3/8 OD	8360183
10	Male Coupling, 1-7/16 - 16 x 1/2 OD	No Longer Available
11	Coupling Flange	8360173
12	Hole Plug for 7/8" Hole	4301463
13	Base	6017791
14	Condenser Mounting Angle	6017771
15	Base Bracket for Fan Mounting	† 6017681
16	Support Bracket	† 6017781
17	Top Cover	6017891
18	Front Panel	No Longer Available
19	Electrical Box Cover	† 6017761
20	Relay	No Longer Available
21	Relay Mounting Bracket	No Longer Available
22	Transformer (Not shown)	No Longer Available
23	Electrical Junction Box (Not shown)	2515013
24	Screw, #10-24 x 0.62	† 5202059
25	Screw, #8 x 0.50	† 5121539
26	Lockwasher, #8	† 5544599
27	Screw, 0.25 x 0.62	† 5033459
28	Lockwasher 0.25 Split SS	† 5545119
29	Washer - Flat 0.25 SS	† 5573049
30	Nut 0.25-20 Steel Hex	† 5429529
31	Lockwasher #10	† 5544649
32	Screw, 0.31-18 x 0.62 Hex Head	† 5035659
33	Nut 0.31-18 Steel Hex Head	† 5429759
34	Washer, Flat 0.31 ID	† 5573099
35	Lockwasher 0.31 Split Zinc	† 5573139
36	Back Panel (Not shown)	† 6017881

NOTE: Items 20, 21, 22, and 23 are used only when the optional K00095 Relay/Transformer Kit has been installed.

† Refer to Cross Reference Guide