

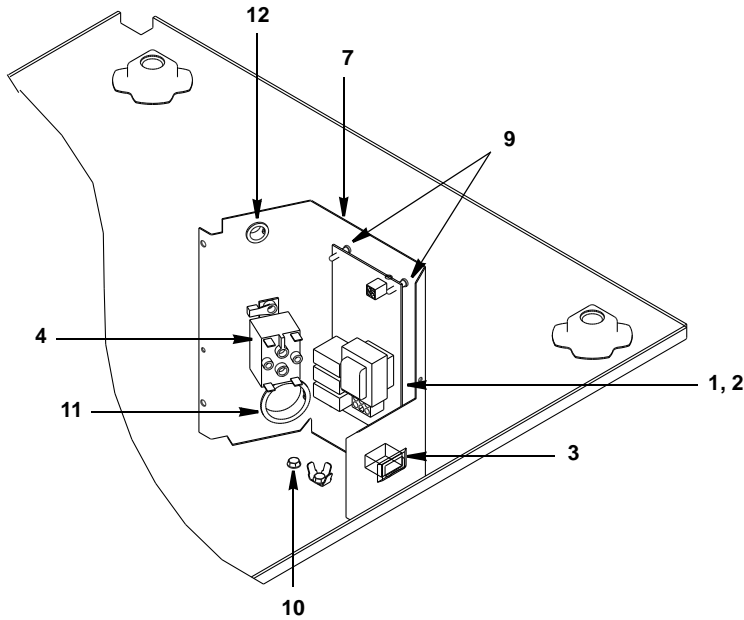


**Ice Machine Parts List for  
Series QM100 Models**

**QMD0102A**

**QMD0103W**

## QM100 CONTROL BOX



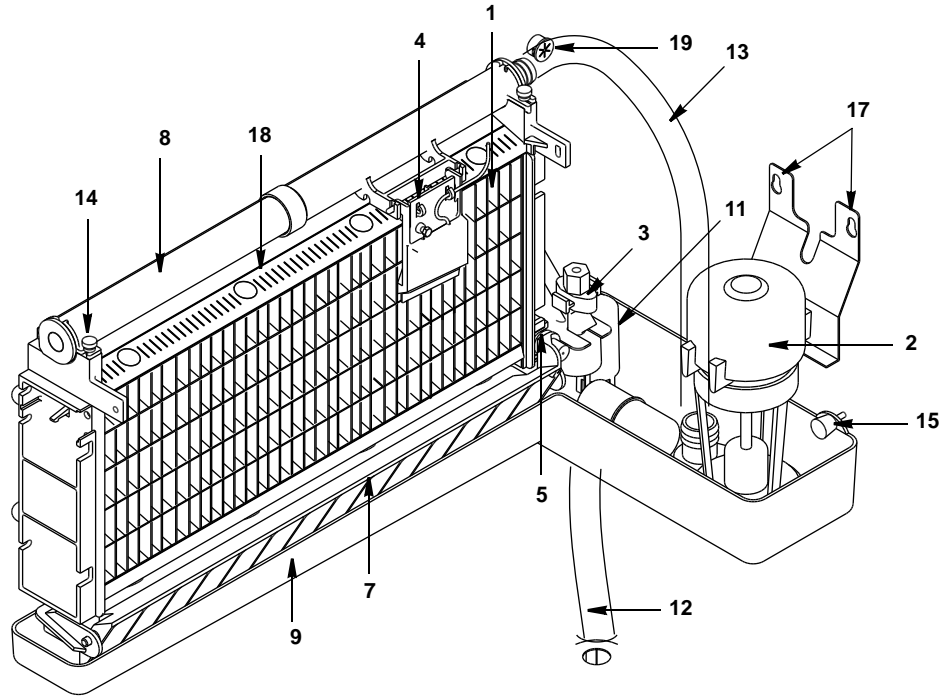
pt1262

### DESCRIPTION

		<b>PART NO.</b>
1	Control Board (for use with all voltages) . . . . .	† 76-2907-3
2	10 Amp Fuse – Mounted on Control Board . . . . .	25-1149-3
3	<b>Toggle Switch</b> Only . . . . .	23-0151-3
	a. Wiring Harness for Toggle Switch. . . . .	20-3248-3
4	Contactor . . . . .	
	a. 115V/60 Hz/1 Ph. . . . .	76-0083-3
5	<b>Wiring Harness</b> . . . . .	
	a. Air-Cooled (Not shown) . . . . .	20-3246-3
	b. Water-Cooled (Not shown) . . . . .	20-3271-3
	c. Ice Thickness Control Probe (Wire Lead and Connectors Only) . . . . .	20-3284-3
6	<b>Power Cord</b> . . . . .	
	a. 125V/60 Hz (Not shown) . . . . .	20-3266-3
<b>Miscellaneous – Brackets, Screws, etc.</b>		
7	Control Box. . . . .	† 604693-1
8	Control Box Cover (Not shown) . . . . .	76-2908-3
9	Control Board Mounting Supports . . . . .	43-0225-3
10	Screw, #10-24 x .50 Ground. . . . .	52-0224-3
11	Bushing . . . . .	† 25-0013-9
12	Bushing . . . . .	† 25-0218-9

† Refer to Cross Reference Guide

# QM100 EVAPORATOR COMPARTMENT



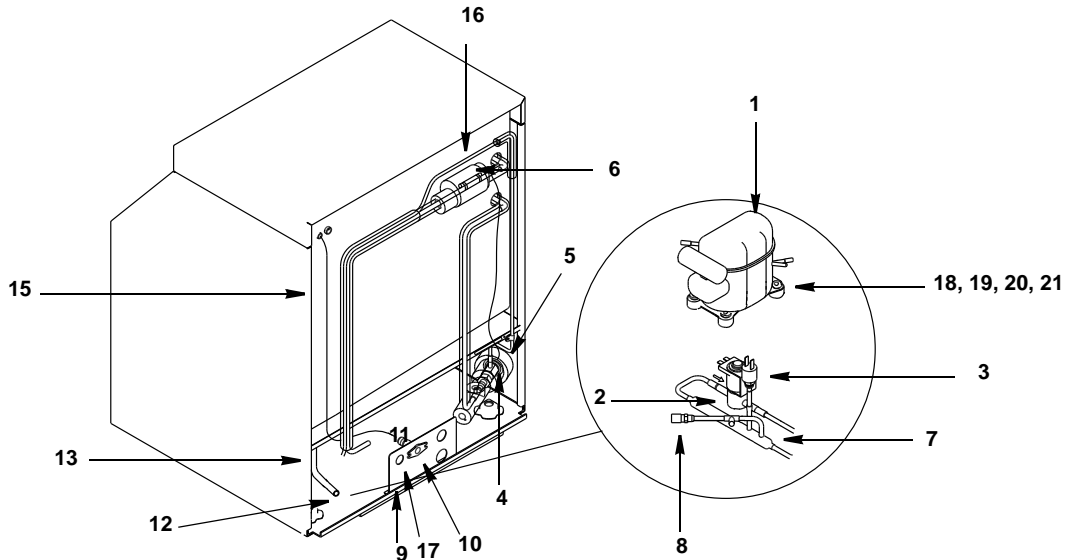
pt1258

## DESCRIPTION

	DESCRIPTION	PART NO.
1	<b>Evaporator Assembly</b>	
a.	Dice Cube	† 76-2955-9
2	<b>Water Pump</b>	
a.	115V/60 Hz	† 76-2306-3
3	<b>Float Valve (Complete Assembly)</b>	† 83-6904-9
a.	Float Valve Screen	† 83-6906-9
b.	Float Valve Plunger	† 83-6908-9
c.	Float Valve Compression Nut	† 56-5072-9
4	Ice Thickness Control Probe	† 76-0160-3
5	Magnetic Bin Switch (Mounted to Evaporator)	† 23-0148-3
6	Water Flow Clamp (Not shown)	76-2054-3
7	Ice Damper	† 76-0048-3
a.	Ice Damper Magnet and Cap	76-2909-3
8	Water Distribution Tube	† 76-2498-3
9	Water Trough	43-0386-3
10	Water Inlet Tubing (Not shown)	44-2029-1
11	Siphon Cap	43-0222-3
<b>Miscellaneous – Brackets, Screws, etc.</b>		
12	Drain Tube	† 76-0085-3
13	Tubing (Water Pump Out)	44-2142-3
14	Screw, #8-32 x .63 Nylon Water Distribution Tube Mounting	† 50-0001-3
15	Thumbscrew, #8-32 x .625	53-0510-3
16	Screw, #10-24 x .750 – Used to Mount Evaporator (Not shown)	† 52-0218-9
17	Screw, #10-24 x .50	† 52-0206-9
18	Evaporator Top Molding and Gasket Assembly	76-2621-3
19	Bushing (Ice Thickness Probe Wire)	† 25-0016-9

† Refer to Cross Reference Guide

# QM100 REFRIGERATION COMPARTMENT – COMMON PARTS



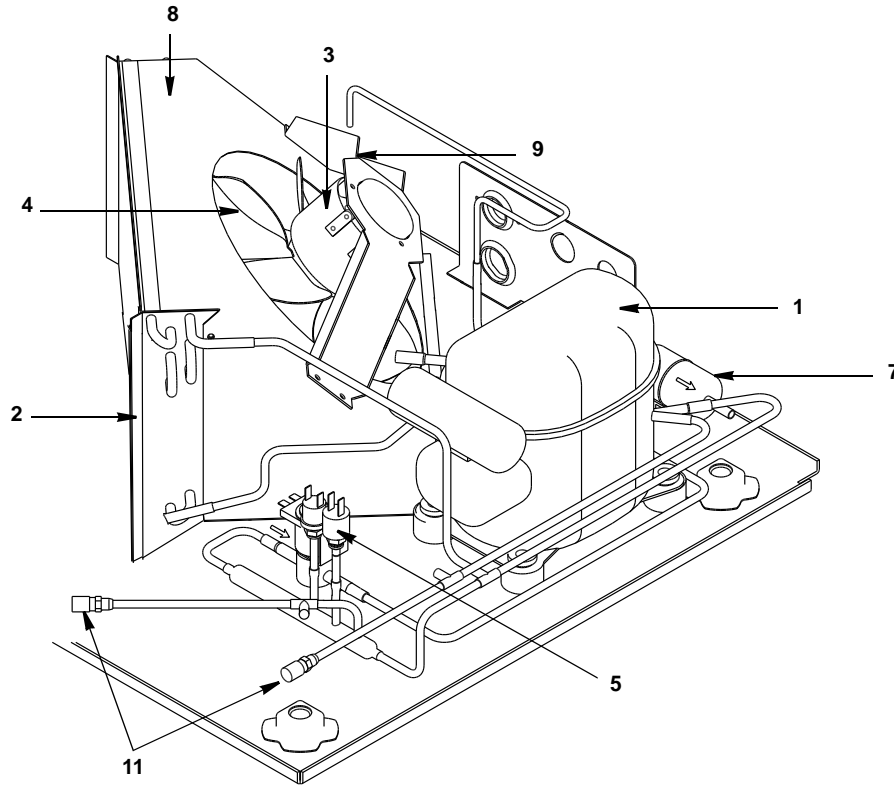
pt1259

**DESCRIPTION**

	<b>DESCRIPTION</b>		<b>PART NO.</b>
1	<b>Compressor</b>		
a.	115V/60 Hz/1 Ph (Tecumseh) . . . . .	†	76-2910-3
	Overload for Compressor . . . . .		85-0562-3
	Starting Device (Tecumseh) . . . . .		85-0565-3
	Start Capacitor (Tecumseh) . . . . .		85-0580-3
b.	115V/60 Hz/1 Ph (Danfoss) . . . . .		76-0132-3
	Starting Device (Danfoss) . . . . .		20-0204-3
	Start Capacitor (Danfoss) . . . . .		20-0203-3
2	<b>Hot Gas Valve</b>		
a.	Hot Gas Valve Including 115V 60 Hz Electrical Coil (Danfoss) . . . . .	†	76-3000-1
b.	Hot Gas Valve 115V Coil Only Danfoss . . . . .		20-0176-3
3	High Pressure Cut-out . . . . .	†	20-0124-3
4	Expansion Valve . . . . .	†	76-0017-3
5	Expansion Valve Body Insulation Boot . . . . .		40-0721-3
6	Expansion Valve Bulb Insulation Boot . . . . .		40-0720-3
7	Manifold Strainer (in front of hot gas valve) . . . . .		83-1016-3
8	Access Valve . . . . .		83-7325-3
	<b>Miscellaneous – Brackets, Screws, etc.</b>		
9	Bracket (Water/Electrical Inlet) . . . . .		602682-1
10	Water Inlet Female Wing Adapter . . . . .	†	87-0609-3
11	Male Connector 1/4" OD x 1/8" NTPF . . . . .		13-6096-1
12	Bin Drain Female Wing Adapter . . . . .		87-0608-3
13	Bin Drain Tubing (Molded) . . . . .		44-2098-3
14	Bin Drain Hose Clamp (Not shown) . . . . .	†	56-5064-9
15	Water Inlet Tubing .375 ID . . . . .		44-2029-1
16	Clamp, Expansion Valve Bulb . . . . .	†	56-5052-9
17	Screw, #10-24 x .50 . . . . .	†	52-0206-9
18	Compressor Mounting Rubber Grommet . . . . .	†	85-0306-9
19	Compressor Mounting Washer . . . . .	†	55-7309-9
20	Compressor Hex Head Cap Screw . . . . .	†	50-3770-9
21	Compressor Mounting Sleeve 3/8" ID x 1.031 . . . . .	†	85-0394-9

† Refer to Cross Reference Guide

# QM100 REFRIGERATION COMPARTMENT – AIR-COOLED



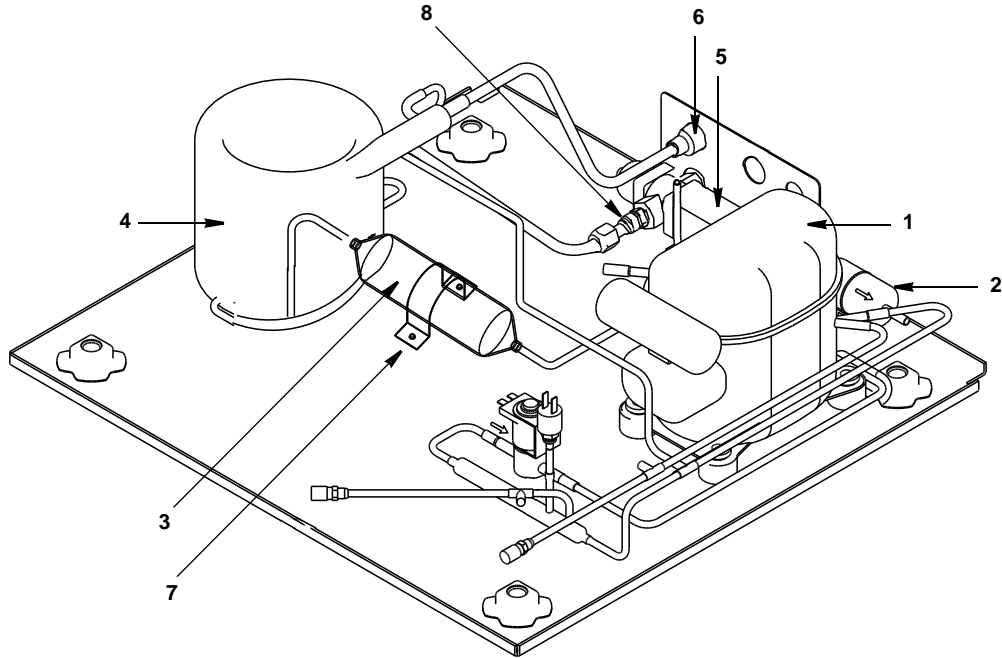
pt1261

## DESCRIPTION

	<b>DESCRIPTION</b>	<b>PART NO.</b>
1	Compressor (Refer to COMMON PARTS Page) .....	Page 4
2	Air Condenser.....	88-5132-3
3	<b>Fan Motor</b>	
	a. 115V .....	24-1308-9
4	Fan Blade .....	24-1624-3
5	Fan Cycling Control .....	† 20-0127-3
6	Air Filter (Not shown) .....	76-2914-3
7	Drier .....	† 89-3022-9
<b>Miscellaneous – Brackets, Screws, etc.</b>		
8	Fan Shroud.....	602685-1
9	Fan Motor Mounting Bracket .....	602743-1
10	Speed Nut to Mount Fan Blade (Not shown) .....	† 54-7507-9
11	Access Valve.....	83-7325-3

† Refer to Cross Reference Guide

# QM100 REFRIGERATION COMPARTMENT – WATER-COOLED



pt1260

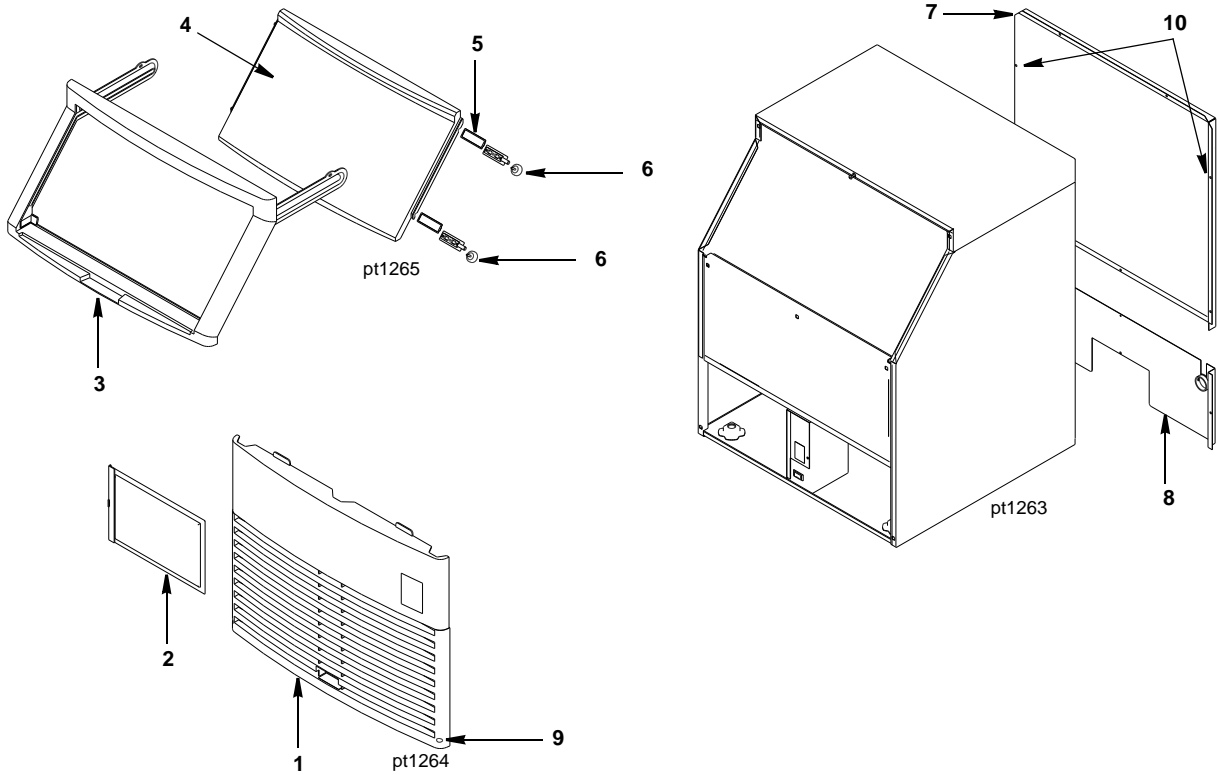
## DESCRIPTION

1	Compressor (Refer to COMMON PARTS Page) . . . . .
2	Drier . . . . .
3	Receiver . . . . .
4	Water-cooled Condenser . . . . .
5	Water Regulating Valve . . . . .
6	Water Drain Female Wing Adapter . . . . .
<b>Miscellaneous – Brackets, Screws, etc.</b>	
7	Receiver Strap . . . . .
8	Water Coupling . . . . .

<b>PART NO.</b>
Page 4
† 89-3022-9
12-0003-1
† 88-6532-3
83-7210-3
87-0610-3

600189-1
83-3202-3

## QM100 PANELS



**DESCRIPTION**

1	Front Panel Assembly	76-2915-3
2	Air Filter	76-2914-3
3	Door Frame Assembly	76-2916-3
4	Bin Door	† 43-0456-3
5	Door Pin Gasket and Door Pin Assembly	76-2917-3
6	Door Pin Thumbscrews	50-1235-3
7	Back Panel, Upper	602680-1
8	Back Panel, Lower	603350-1

**Miscellaneous – Brackets, Screws, etc.**

9	Front Cover Screw	† 52-0223-9
10	Screw, #10-24 x .50	† 52-0206-9
11	Ice Scoop (Not shown)	† 33-0260-3

† Refer to Cross Reference Guide

**INTENTIONALLY LEFT BLANK**