



Manitowoc
Foodservice
Parts Manual

For more Parts Information:
<https://manitowocfsg.sysonline.com/Default.aspx>

TABLE OF CONTENTS

Manitowoc Foodservice [Updated: Sep. 30, 2013]

Manitowoc - Ice & Related

Parts Catalog

Ice Machine

S Series

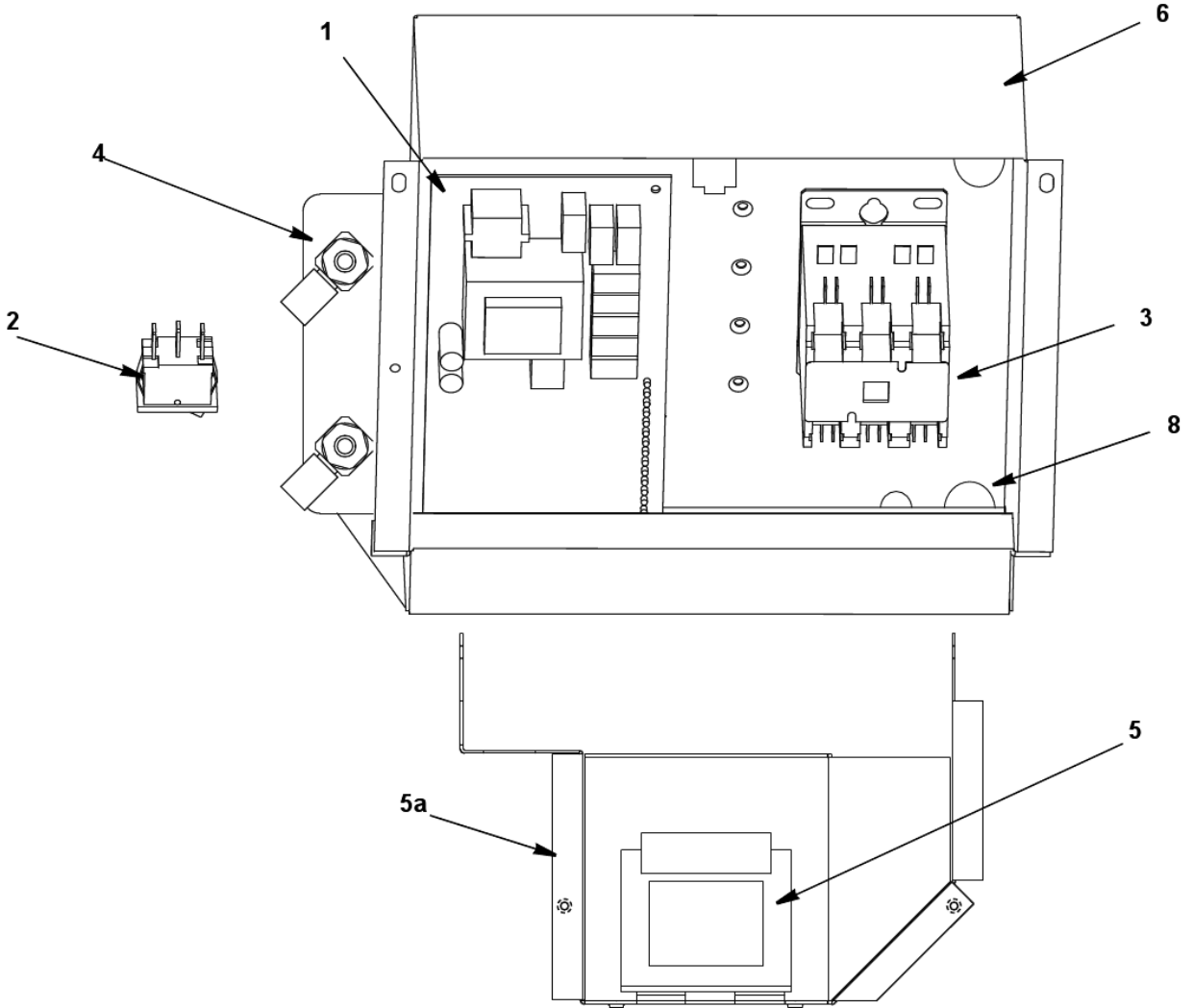
S Model - Marine

S3300M

S3300M Control Box.....	1
S3300M Evaporator Compartment.....	3
S3300M Refrigeration Compartment - Common Components.....	6
S3300M Refrigeration Compartment - Water-cooled Components.....	9
S3300M Panels.....	11

S3300M

S3300M CONTROL BOX



S3300M

S3300M CONTROL BOX

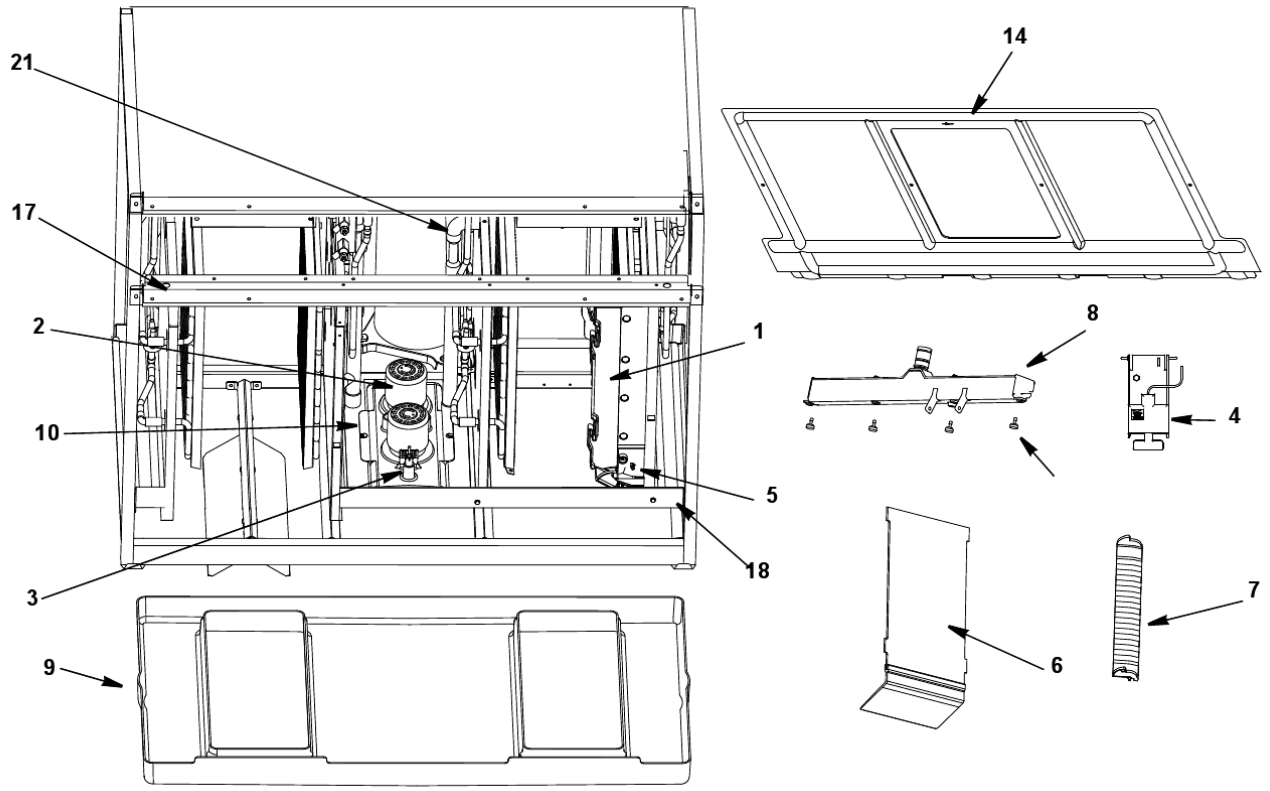
#	PART #	DESCRIPTION	QTY	Note
1	000003284	Control Board		
1a	000008240	7 Amp Fuse - Mounted on Control Board		
2	2007939	Toggle Switch		
2a	000002858	Toggle Switch Wiring Harness		
2b	4011639	Toggle Switch Box		
3		Contactor		
3a	2006619	Contactor - 230V/60 Hz/3 Ph		
4	8373253	Access Valve		
4a	000008313	Mounting Bracket		
5	000005204	Transformer		
5a	000005283	Box		
5b	000005282	Cover		
6	000005180	Control Box		
6a	000005179	Control Box Cover		
6b	6067249	Control Box Bracket		
7	4302253	Control Board Mounting Supports		
8	2502193	Bushing		
9	5202169	Screw - #10-24 x 0.50" Ground		
9a	5573209	Star Washer		
10	5202069	Screw - #10-24 x 0.50" HEX		
11		Wiring Harnesses		
11a	000002860	Wiring Harness - Control Box		
11b		Harvest Air Assist Pump		
11c	000002859	Wiring Harness - Curtain Switch		
11d	000003253	Wiring Harness - Bulkhead Water		
11e	000003260	Wiring Harness - Low Pressure Protection		
11f	000003172	Wiring Harness - Compressor		
11g	000003170	Wiring Harness - Water-cooled		[1]
11h	000005288	Wiring Harness - Transformer		

PART NOTES:

[1] - incoming power supply

S3300M

S3300M EVAPORATOR COMPARTMENT



S3300M

S3300M EVAPORATOR COMPARTMENT

#	PART #	DESCRIPTION	QTY	Note
1		Evaporator Assembly		
1a	000002783	Evaporator - Dice Cube		
1b	000002784	Evaporator - Half Dice Cube		
2	000000259	Water Pump - 230V/50 Hz		[1]
3	2006549	Water Level Probe		
3a	000003355	Water Level Probe Bracket		
3b	5202069	Screw - #10-24 x 0.50" HEX		
3c	5202329	Screw - #10-24 x 0.25" PH		[2]
4	2008029	Ice Thickness Control Probe		[3]
4a	5650909	Clip		[4]
5	000001756	Magnetic Bin Switch		
5a	000001421	Bin Switch Covers		
6	000009175	Splash Shields		
7	000002056	Ice Damper Assembly		
8	7602193	Water Distribution Tube - 30" Models		
8a	000001118	Molded Vinyl Tube		[5]
8b	000001117	Molded Vinyl Tube		[6]
8c	000001986	Barbed Fitting		
8d	5650609	Snap Clamp - 1.0" ID		[7]
8e	5650539	Snap Clamp - 1.123 x 1.296		[8]
8f	4014693	Fitting		[9]
8g	000005431	Fitting Bracket		
8h	5004649	O-Rings		[10]
9	000002956	Water Trough		
9a	000003105	Trough Support Bracket		
10	000002955	Water Pump and Water Level Probe Mount		
11	5004799	Thumbscrew SS - #8-32 x 0.375"		[11]
11a	5004629	O-Ring - 0.125" ID		
12	5004619	Screw - #12-16 x 0.687"		[12]
13	000003358	Evaporator Top Covers		
14	000002993	Evaporator Front Cover		
15	000002176	Evaporator Top Filler Covers		
16	000001416	Evaporator Bottom Covers		
17	000003026	Evaporator Top Support		
18	000003025	Evaporator Bottom Support		
19	000004063	Evaporator Top Bracket		
20	5012319	Screw - #12-16 x 0.75"		
21		Molded Vinyl Tubing		
21a	000003112	Water Pump to Distribution Tube		[13]
21b	000003111	Water Pump to Distribution Tube		[14]
21c	000003113	Cross Over Tube		[15]
22	5012213	Stainless Steel Thumbscrew 10-32 x 0.75		

S3300M

S3300M EVAPORATOR COMPARTMENT

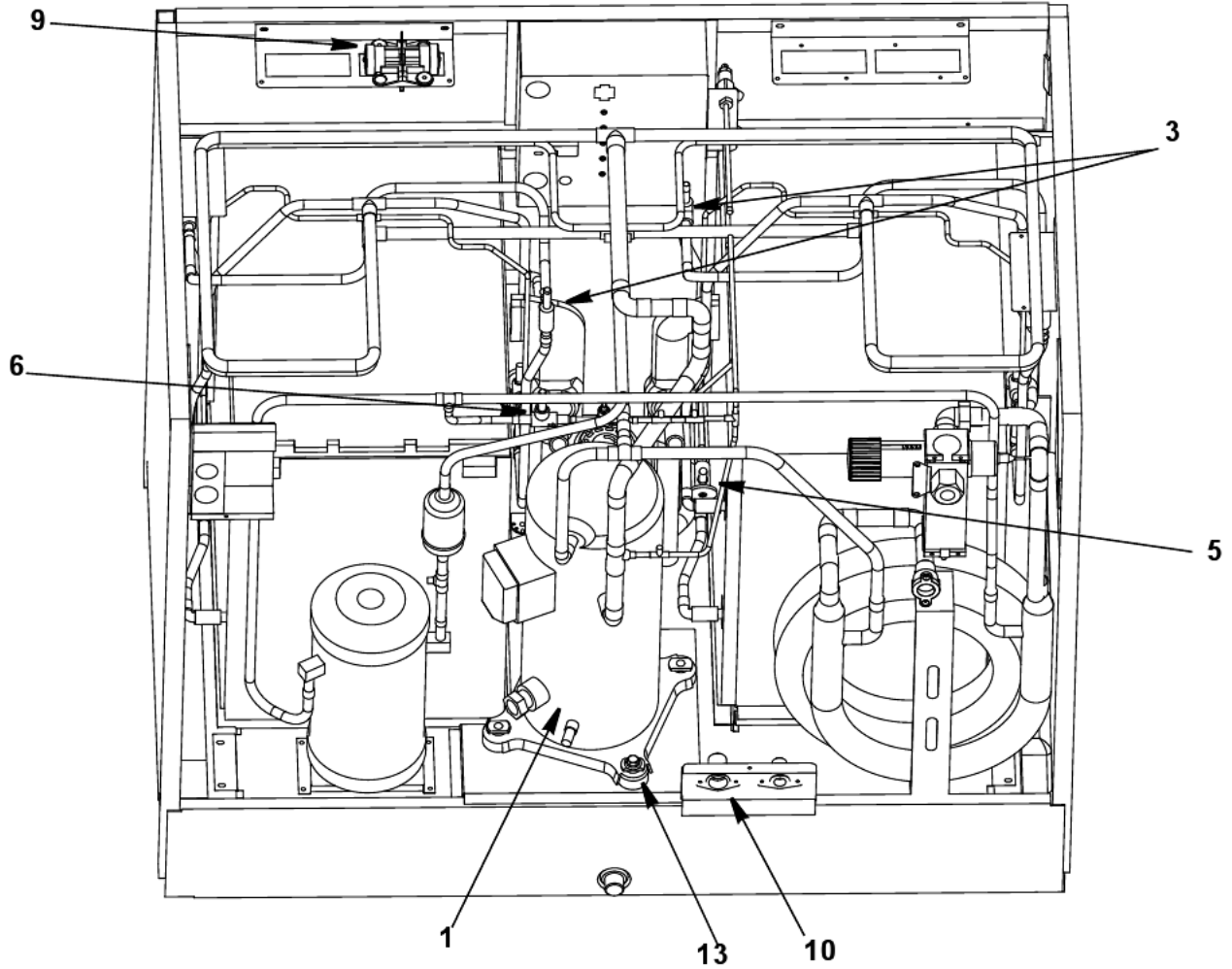
#	PART #	DESCRIPTION	QTY	Note
---	--------	-------------	-----	------

PART NOTES:

- [1] - Also used on 60 Hz
- [2] - to mount water level probe holder
- [3] - not shown
- [4] - holds ice thickness probe wire to bulkhead
- [5] - to Right Hand Distribution Tubes
- [6] - to Left Hand Distribution Tubes
- [7] - for barbed fitting
- [8] - vinyl tubes to distribution tubes
- [9] - through bulkhead
- [10] - Back of Distribution Assembly
- [11] - Water Distribution Tube Mounting
- [12] - Each
- [13] - Evaporators 1 & 3
- [14] - Evaporators 2 & 4
- [15] - Connects 1 & 2 and 3 & 4

S3300M

S3300M REFRIGERATION COMPARTMENT - COMMON COMPONENTS



S3300M

S3300M REFRIGERATION COMPARTMENT - COMMON COMPONENTS

#	PART #	DESCRIPTION	QTY	Note
1		Compressor		
1a	000005203	Compressor 460V/60 Hz/3 Ph		
2		Water Dump Valve		
2a	000001768	Water Dump Valve - 208-230V/50-60 Hz		
3		Harvest Valve		
3a	7630101	Solenoid Valve with Coil - 230V/50-60 Hz		
3b	000005157	Danfoss Solenoid Valve Coil Only - 230V/50-60 Hz		[1]
4	000002884	Water Inlet Valve - 208-230V/50-60 Hz		
5	000003158	Expansion Valve		
5a	4000403	Valve Insulation Boot - Body		
5b	4000923	Valve Insulation Boot - Bulb		
6	8251353	Liquid Line Solenoid Valve		
7	2001243	High Pressure Cut-out Control		
8	000005018	Low Pressure Cut-out		
9		Air Compressor		
9a	2009353	Air Assist Pump - 230V		
9b	4011733	Manifold Tee		[2]
9c	3001453	Air Assist Nozzle		
9d	000003296	Bracket		
10		Water Drain		
10a	8706093	Female Wing Adapter - 0.375"		
10b	4420383	Clear Tubing - 0.625" ID		
10c	5650709	Snap Clamp - 0.799"/0.899" ID		
11		Water Inlet Valve		
11a	4010439	Tubing - Water Inlet Valve		[3]
11b	1360989	Connector - Water Inlet Valve		
11c	000005178	Bracket		
11d	8706083	Female Wing Adapter - 0.50"		
11e	1360961	Male Connector		
12		Water Dump Valve		
12a	000003295	Mounting Bracket		
12b	000003110	Tubing - Water Dump Valve		
13		Compressor Mounting		
13a	000003028	Base		
13b	000003086	Support Bracket		
13c	8504859	Rubber Grommet		
13d	8503949	Mounting - Sleeve		
13e	5004819	Compressor Mounting - Bolt		
13f	5004829	Compressor Mounting - Nut		
14	000003353	Heat Exchanger Mounting Bracket		
15	5650529	Clamp - Expansion Valve Bulb		
16	3000503	Strap - Expansion Valve Bulb - 0.5"		

S3300M

S3300M REFRIGERATION COMPARTMENT - COMMON COMPONENTS

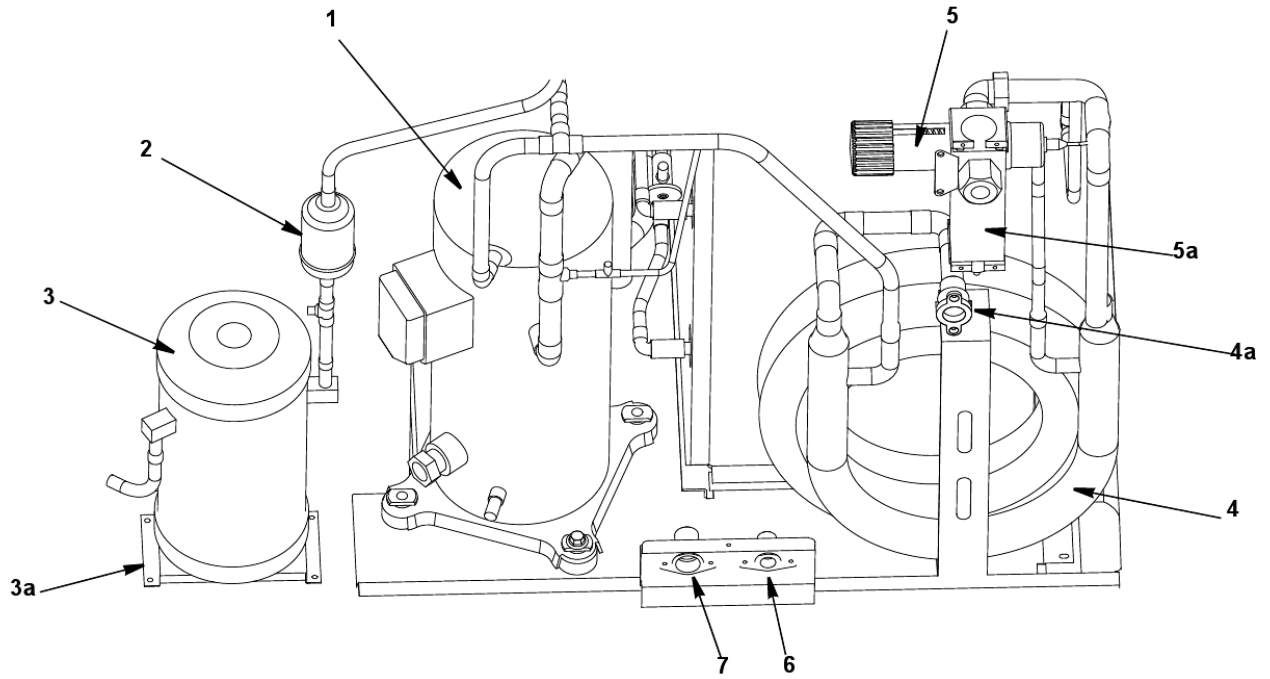
#	PART #	DESCRIPTION	QTY	Note
---	--------	-------------	-----	------

PART NOTES:

- [1] - \pages from 000005156_02.jpg" width=266 height=183>
- [2] - Air Pump Tubing Outlet
- [3] - \pages from 401043_05.jpg" width=1797 height=2238>

S3300M

S3300M REFRIGERATION COMPARTMENT - WATER-COOLED COMPONENTS



S3300M

S3300M REFRIGERATION COMPARTMENT - WATER-COOLED COMPONENTS

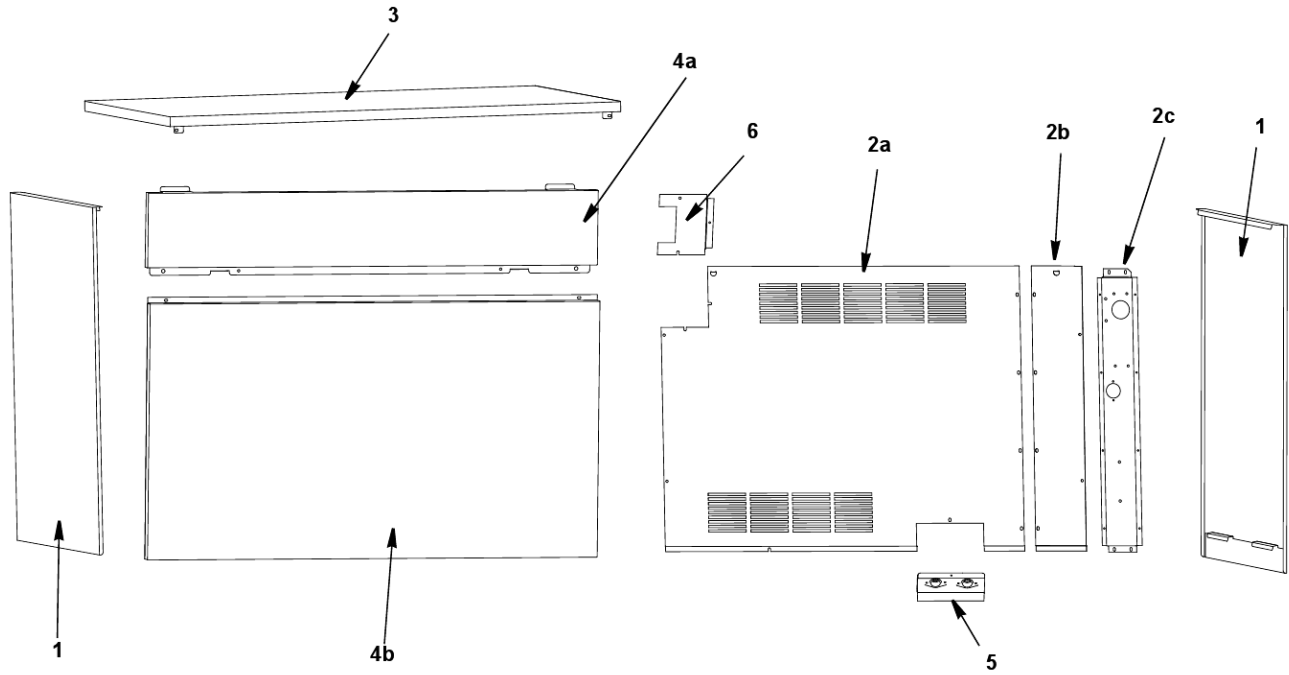
#	PART #	DESCRIPTION	QTY	Note
1	7600603	Compressor - Copeland - 208-230V/60 Hz/3 Ph		
2	000002883	Drier		[1]
3	000007424	Receiver		
3a	000003293	Mounting Bracket		
4	000002857	Water-Cooled Condenser		[2]
4a	000003087	Drain Fitting		
4b	000005182	Water Condenser Support Panel		
5		Water Regulating Valve		
5a	000003196	Water Regulating Valve Normal Pressure		[3]
5b	000002875	High Pressure Water Regulating Valve		[4]
5c	000003279	Mounting Bracket		
6	8706093	Female Wing Adapter - 0.375"		[5]
7	8706033	Female Wing Adapter - 0.75"		[6]

PART NOTES:

- [1] - DML0845S
- [2] - with Mounting Bracket
- [3] - up to 275 psig
- [4] - up to 350 psig
- [5] - Drain Adapter
- [6] - Water Inlet Adapter

S3300M

S3300M PANELS



S3300M

S3300M PANELS

#	PART #	DESCRIPTION	QTY	Note
1	000002811	Side Panels		
2		Back Panels		
2a	000003357	Large Left Panel		
2b	000003354	Small Right Panel		
2c	000005182	Water Condenser Support Panel		
3	000002814	Top Cover		
4		Front Panel		
4a	000002817	Front Panel - Upper		
4b	000002816	Front Panel - Lower		
5	000003255	Water In/Out Panel		
6		Electrical Connection		
6a	000003992	Box		
6b	000003994	Cover		
7	000010516	Cartoning		