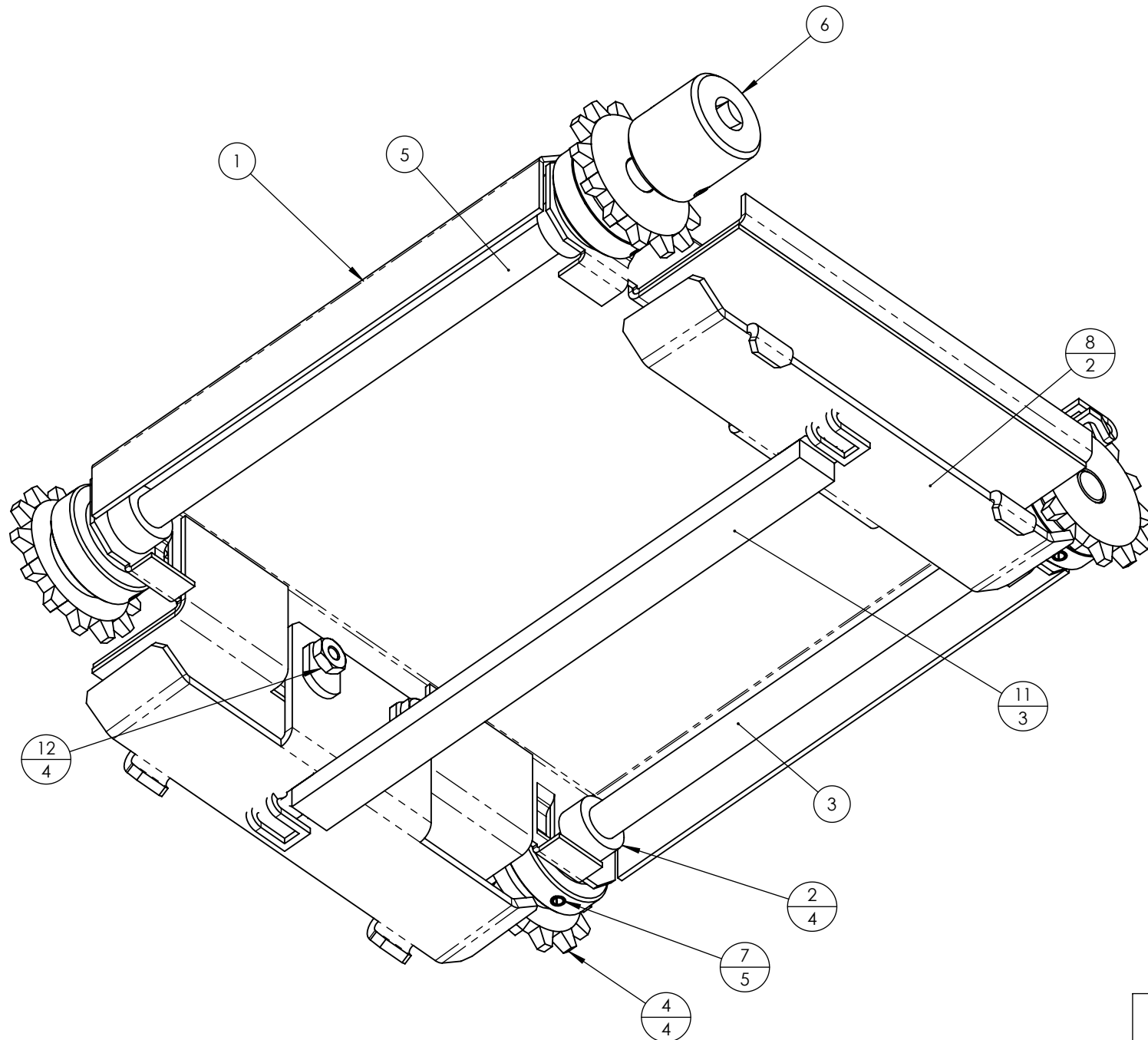
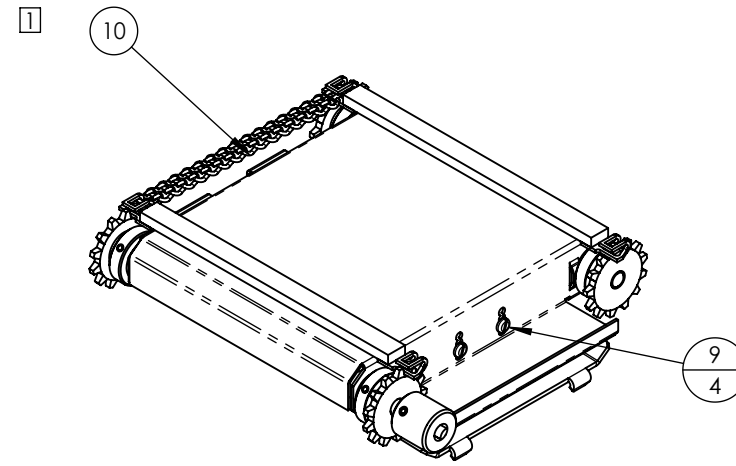
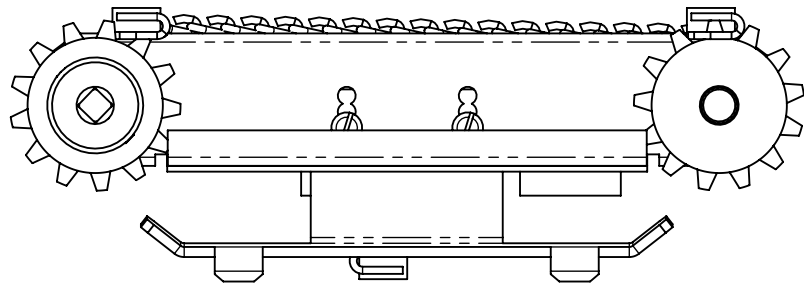


8 7 6 5 4 3 2 1

REVISIONS				
ZONE	REV.	DESCRIPTION	DATE	APPROVED
	A	INITIAL RELEASE	1-7-03	VS
	B	DELETED RIVETS, SPRINGS & TENSIONERS ADDED FIXED TENSIONER & SCREWS	1-29-03	VS
	C	REVERSED CHAIN, REPLACED PUSH BARS, ADDED JAM NUTS	3-26-03	VS



NOTES:

- 1- ITEM 10 TO BE ASSEMBLED IN 16 LINK SECTIONS BETWEEN INSTANCES OF ITEM 11. 5 PCS OMITTED FOR CLARITY
- 2- 6 X 16 = 96 LINKS PER DRIVE UNIT
96 X .353 = 2.824 INCHES CHAIN

QTY.	PART NO.	DESCRIPTION	ITEM NO.
	4	5510 NUT, HEX, SS, 8-32	12
	3	13859 PUSH BAR, FEEDER, 1 LANE - WLDMT	11
2	1	11381 CHAIN, LADDER, .353 PITCH	10
	4	5512 SCREW, PAN HEAD, 8-32 X 3/8"	9
	2	13691 TENSIONER, FIXED, LADDER CHAIN, 16 LINK	8
	5	11114 ROLL PIN, Ø1/8 X 1", SS	7
	1	11194 COUPLER, DRIVE, 1/4" SQ X Ø3/8" ID	6
	1	12291 SHAFT, DRIVEN, FEEDER, SINGLE LANE, Ø3/8 X 9	5
	4	11217 SPROCKET, ROLLER CHAIN, 13T, Ø3/8 BORE	4
	1	12292 SHAFT, IDLER, FEEDER, SINGLE LANE, Ø3/8 X 8.22	3
	4	11478 BUSHING, FLANGED, Ø3/8" SHAFT, W/FLAT	2
	1	13685 PLATFORM, 7.5" - FEEDER, 5.65" SPACING - ASSY	1

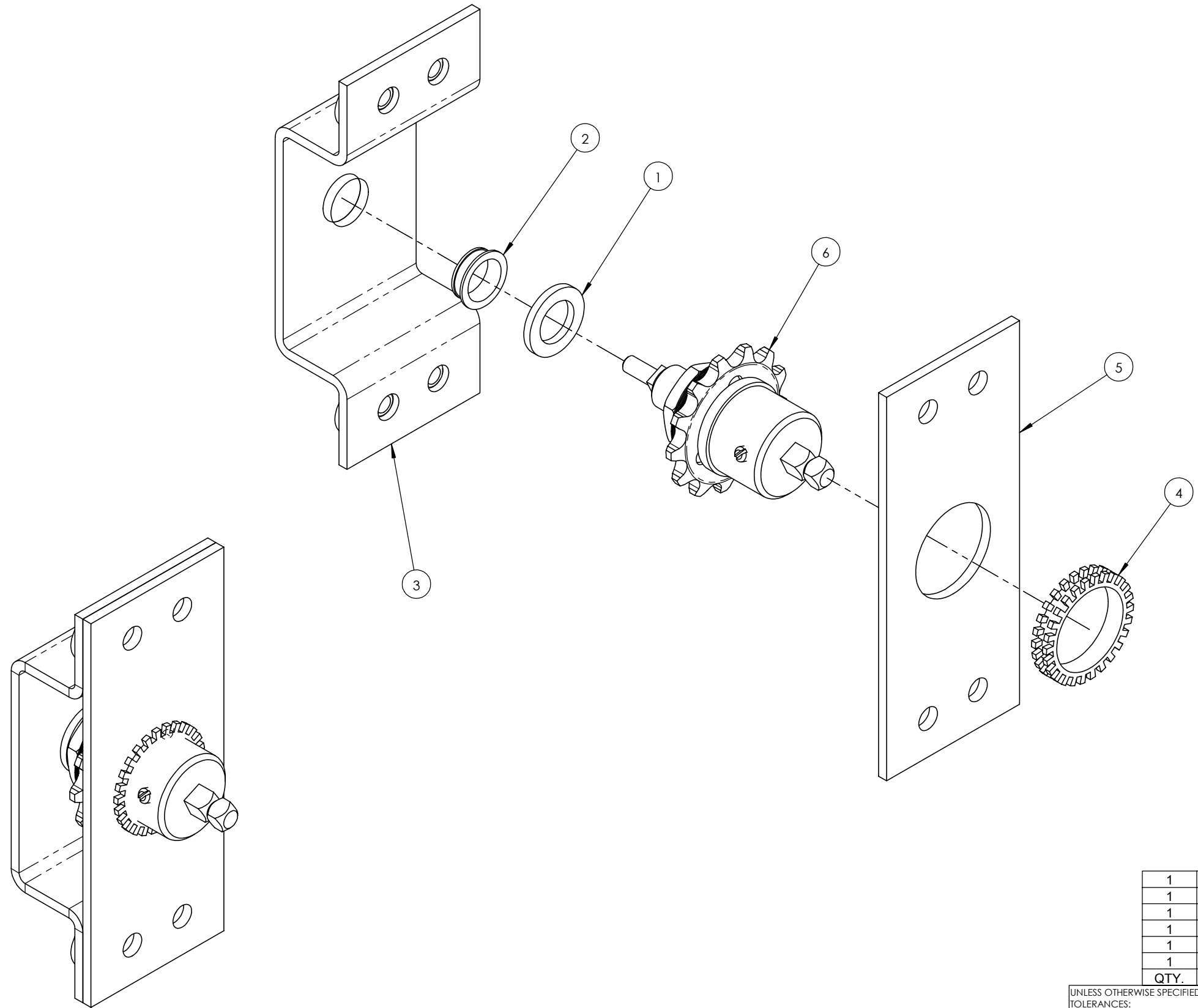
UNLESS OTHERWISE SPECIFIED DIMS ARE IN INCHES		DATE	NAME	 <small>(707) 284-7100 (707) 284-7430 FAX WINDSOR, CA 95492-8594</small>	<small>THIS DOCUMENT IS THE PROPERTY OF NIECO CORPORATION. REPRODUCTION OR RELEASE WITHOUT EXPRESS PERMISSION IS PROHIBITED.</small>
TOLERANCES: FRACTIONAL ±1/32 ANGULAR: ±1° TWO PLACE DECIMAL ±.02 THREE PLACE DECIMAL ±.01		DRAWN	1-7-03		
MATERIAL		CHECKED	-	-	SIZE
SEE PARTS LIST		FINISH	-	-	DWG. NO.
				B 13689	
				REV	
				C	
TITLE: DRIVE UNIT, FEEDER - 7.5" - ASSY					
SCALE: 1:2		WEIGHT:		SHEET 1 OF 1	

12858, 13690, 11211	13640
SIMILAR TO	USED ON
APPLICATION	

8 7 6 5 4 3 2 1

8 7 6 5 4 3 2 1

REVISIONS				
ZONE	REV.	DESCRIPTION	DATE	APPROVED
	A	INITIAL RELEASE	8-8-04	DC



QTY.	PART NO.	DESCRIPTION	ITEM NO.
1	14900	SPROCKET, CLUTCHED, 13T, BELLEVILLE SPRING	6
1	14897	PLATE, LARGE BEARING, FEEDER DRIVE	5
1	14896	BEARING, SHOULDER WASHER, LARGE, FEEDER DRIVE	4
1	10640	BRACKET, BEARING, FEEDER DRIVE - WLDMT	3
1	10627	BEARING CLIP, Ø1/2" ID, .12 THK	2
1	10275	WASHER, THRUST, 1/2 ID, 13/16 OD, .090 THK	1

UNLESS OTHERWISE SPECIFIED DIMS ARE IN INCHES

TOLERANCES: FRACTIONAL ±1/32 ANGULAR: ±1° TWO PLACE DECIMAL ±.02 THREE PLACE DECIMAL ±.01	DATE 8-3-04	NAME CJ	 <small>(707) 284-7100 (707) 284-7430 FAX WINDSOR, CA 95492-8594</small>	<small>THIS DOCUMENT IS THE PROPERTY OF NIECO CORPORATION. REPRODUCTION OR RELEASE WITHOUT EXPRESS PERMISSION IS PROHIBITED.</small>
MATERIAL SEE PARTS LIST	CHECKED 8-8-04	DC		

SIZE B	DWG. NO. 15882	REV A
------------------	--------------------------	-----------------

TITLE: FEEDER DRIVE, COMBO CLUTCH - ASSY

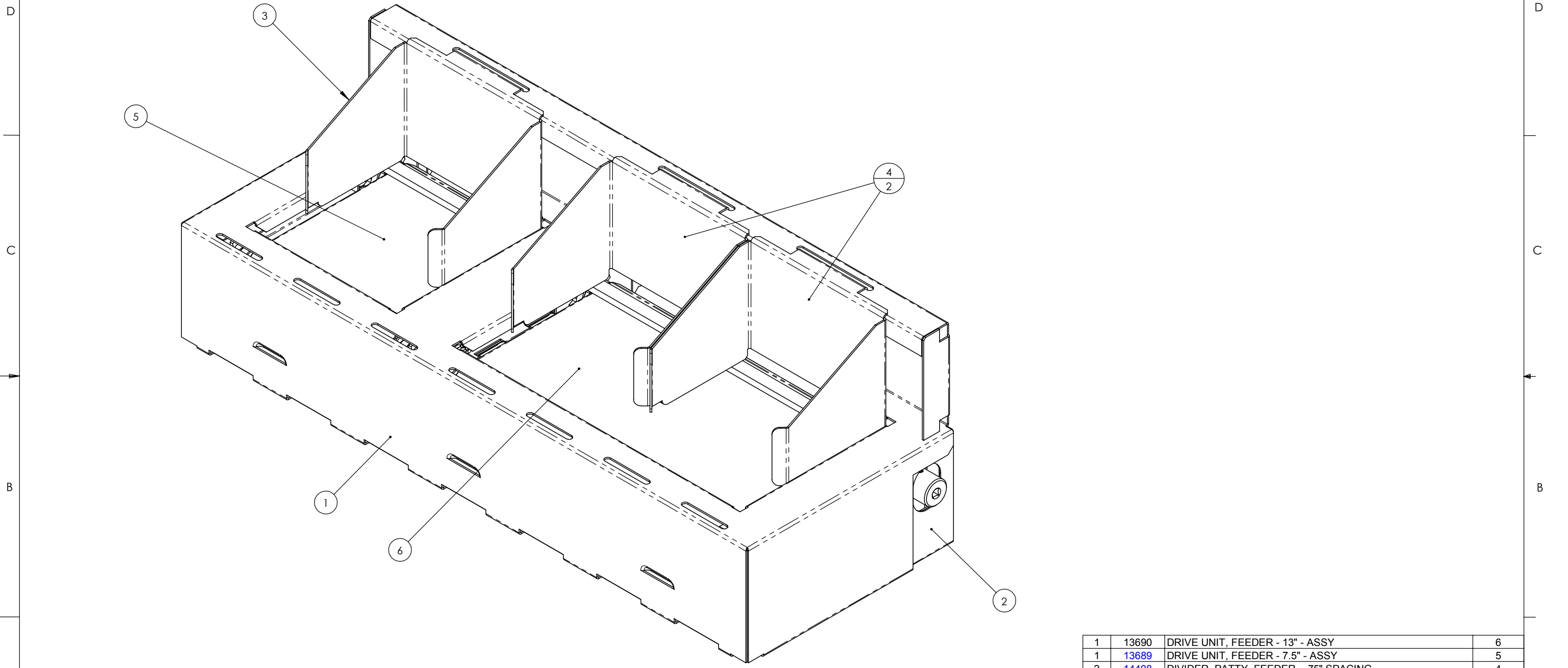
SCALE: 1:1	WEIGHT: 0.794	SHEET 1 OF 1
------------	---------------	--------------

14297	14170 14300 14507	14635 14680
SIMILAR TO	USED ON	
APPLICATION		

8 7 6 5 4 3 2 1

8 7 6 5 4 3 2 1

REVISIONS				
ZONE	REV.	DESCRIPTION	DATE	APPROVED
	A	INITIAL RELEASE	7-29-04	DC



QTY.	PART NO.	DESCRIPTION	ITEM NO.
1	13690	DRIVE UNIT, FEEDER - 13" - ASSY	6
1	13689	DRIVE UNIT, FEEDER - 7.5" - ASSY	5
2	14408	DIVIDER, PATTY, FEEDER - .75" SPACING	4
1	14407	DIVIDER, PATTY, FEEDER - .50" SPACING	3
1	14314	ENCLOSURE, FEEDER, PUSHBAR, 1 & 2 LANE - WLDMT	2
1	14304	COVER, FEEDER, PUSH BAR, 1 & 2 LANE	1

UNLESS OTHERWISE SPECIFIED DIMS ARE IN INCHES

DATE	7-29-04	NAME	DC
DRAWN	7-29-04	CHECKED	DC
FINISH	----		

TOLERANCES:
 FRACTIONAL ±1/32
 ANGULAR: ±1°
 TWO PLACE DECIMAL ±.02
 THREE PLACE DECIMAL ±.01

niECO (707) 284-7100 (707) 284-7430 FAX WINDSOR, CA 95492-8594

THIS DOCUMENT IS THE PROPERTY OF niECO CORPORATION. REPRODUCTION OR RELEASE WITHOUT EXPRESS PERMISSION IS PROHIBITED.

SIZE **B** DWG. NO. **15701** REV **A**

TITLE: FEEDER, PUSH BAR, 1 & 2 LANE, .50 & .75 GAP - ASSY

SCALE: 1:2 WEIGHT: SHEET 1 OF 1

14311	-
SIMILAR TO	USED ON
APPLICATION	

8 7 6 5 4 3 2 1

8

7

6

5

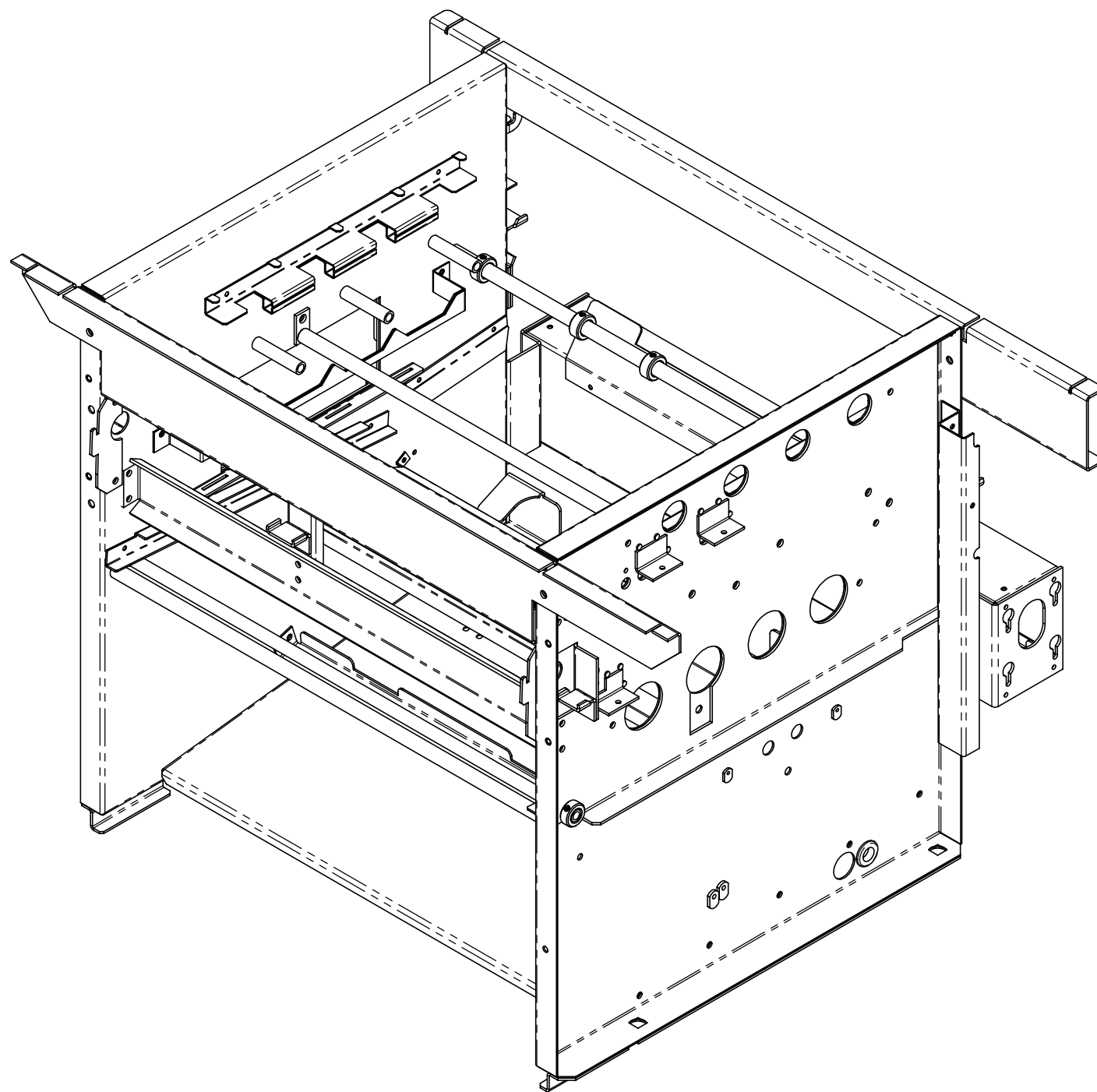
4

3


2

1

REVISIONS				
ZONE	REV.	DESCRIPTION	DATE	APPROVED
	A	INITIAL RELEASE	7-26-04	DC



QTY.	PART NO.	DESCRIPTION	ITEM NO.
1	14427	SUPPORT, 4 BURNER SHIELD - 3.5 CENTERS - WLDMT	26
1	14424	SUPPORT W/CARRYOVER, 4 BURNER SHIELD - 3.5 CENTERS - WLDMT	25
1	14138	BRACE, SUPPORT, CENTER BEARING	24
1	14137	BRACKET,SUPPORT, CENTER BEARING, INNER - WLDMT	23
2	14131	BRACKET, FEEDER SUPPORT	22
1	13977	CHAIN GUARD BASE, RIGHT INNER - WLDMT	21
1	13975	CHAIN GUARD BASE, LEFT INNER - WLDMT	20
1	13931	ENCLOSURE, DUAL MOTOR, 24.5" FRAME - WLDMT	19
1	13920	SUPPORT, PATTY CATCH PAN, 3 LANE	18
1	13916	MOTOR MOUNT, RIGHT	17
1	13915	MOTOR MOUNT, LEFT	16
1	13906	SHIELD, REFLECTOR, WARMER, 24.5" FRAME	15
1	13902	ROD, OFFSET, 24.5" FRAME - WLDMT	14
1	13775	BRACKET, SPACER, 3.18", SIDE PANEL	13
2	10984	BRACKET, STRIPPER, BLADE MOUNT - ASSY	12
2	6726	SET COLLAR, Ø.56 BORE, ZINC PLATED	11
4	6089	ROD, SUPPORT, Ø5/8	10
4	6028	COLLAR, SET, Ø5/8 BORE	9
1	5820	GROMMET, 3/4" RUBBER	8
1	4434-06	PIPE, PLATEN WIRES	7
6	4048	SUPPORT, BELT	6
1	14135	BRACKET, UPPER FRAME, DUAL PROBE ENCLOSURE - WLDMT	5
1	13834	BRACKET, UPPER FRAME W/HOOKS, DISCHARE END, 24.5" FRAME	4
1	15705	SIDEPLATE, RIGHT, N750BYB - WLDMT	3
1	14163	SIDEPLATE, LEFT, 4 BURNER, 3.5 CENTERS - 23 X 25.5 - WLDMT	2
1	13924	BASE PLATE, 19 X 24.5" FRAME - WLDMT	1

UNLESS OTHERWISE SPECIFIED DIMS ARE IN INCHES		DATE	NAME	 <small>(707) 284-7100 (707) 284-7430 FAX WINDSOR, CA 95492-8594</small>	<small>THIS DOCUMENT IS THE PROPERTY OF NIECO CORPORATION. REPRODUCTION OR RELEASE WITHOUT EXPRESS PERMISSION IS PROHIBITED.</small>
TOLERANCES: FRACTIONAL ±1/32 ANGULAR: ±1° TWO PLACE DECIMAL ±.02 THREE PLACE DECIMAL ±.01		DRAWN	7-26-04		
MATERIAL		CHECKED	7-26-04	DC	
SEE PARTS LIST		FINISH		-----	
TITLE: FRAME ASSEMBLY - N750BYB			SCALE: 1:2	WEIGHT: 121.82	SHEET 1 OF 2

14121	-
SIMILAR TO	USED ON
APPLICATION	

8

7

6

5

4

3

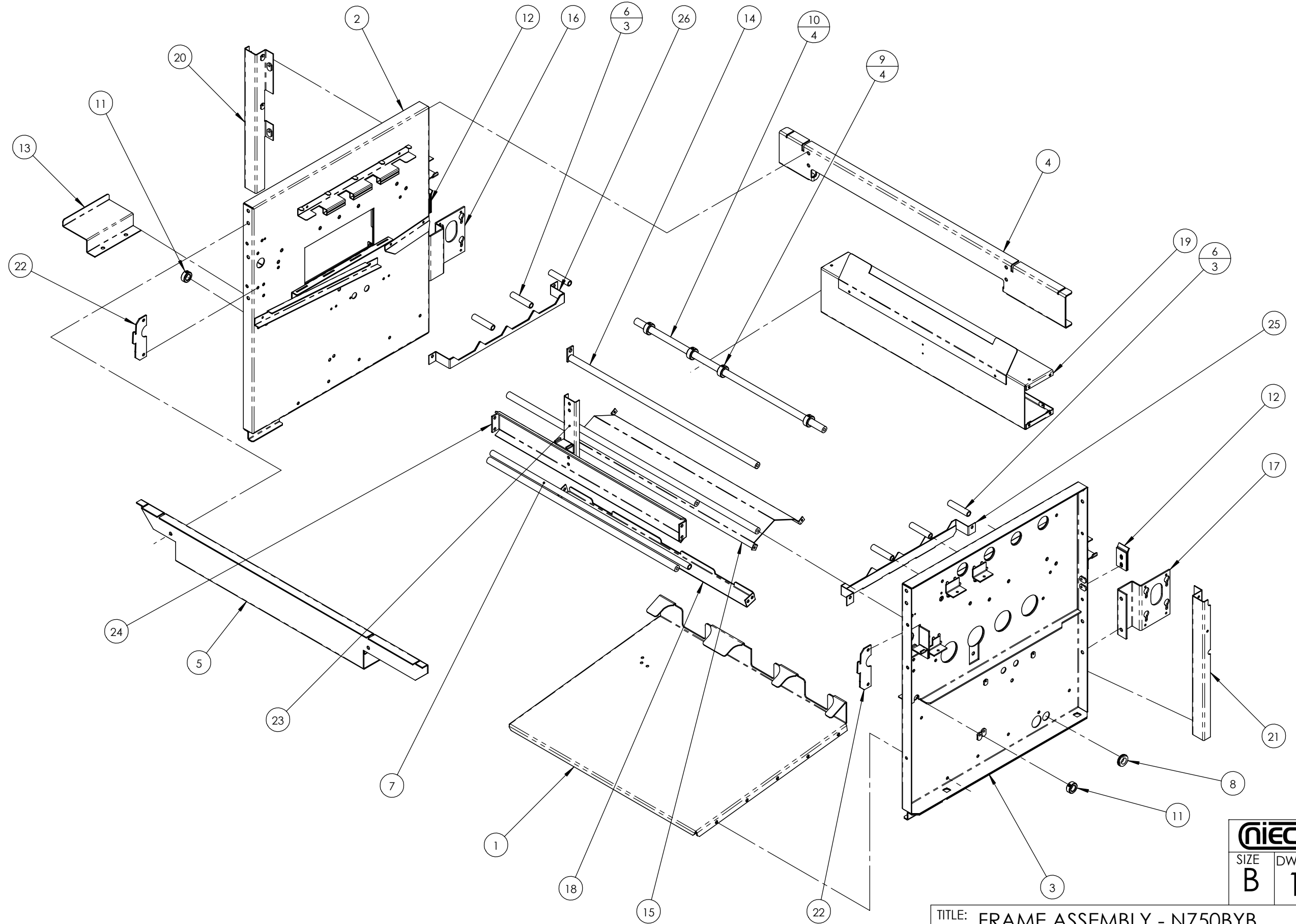
2

1

8 7 6 5 4 3 2 1

D
C
B
A

D
C
B
A



nioco (707) 284-7100
 (707) 284-7430 FAX
 WINDSOR, CA 95492-8594

THIS DOCUMENT IS THE PROPERTY OF
 NIICO CORPORATION. REPRODUCTION
 OR RELEASE WITHOUT EXPRESS
 PERMISSION IS PROHIBITED.

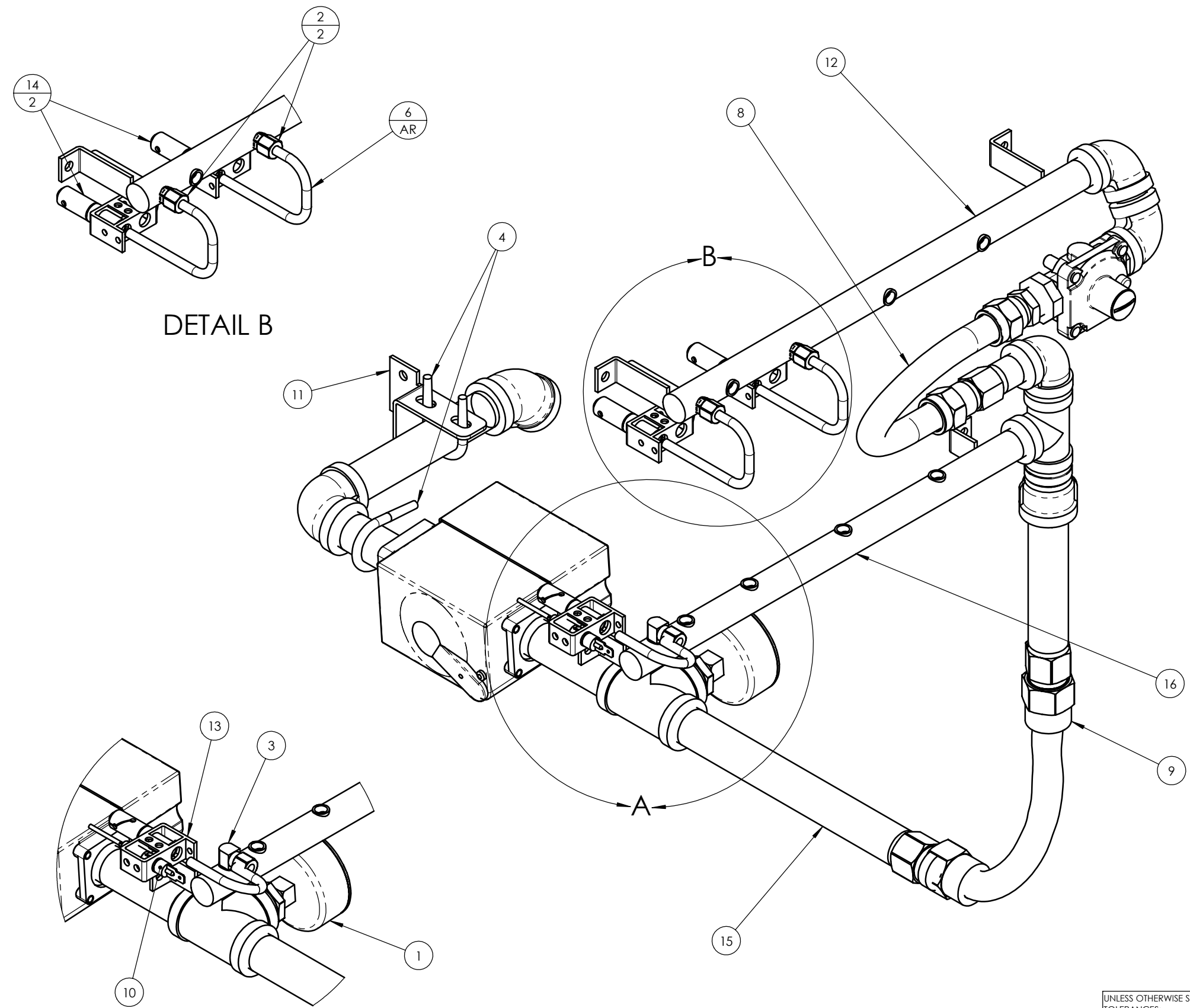
SIZE B	DWG. NO. 15700	REV A
------------------	--------------------------	-----------------

TITLE: **FRAME ASSEMBLY - N750BYB**

SCALE: 1:2 WEIGHT: 121.82 SHEET 2 OF 2

8 7 6 5 4 3 2 1

REVISIONS				
ZONE	REV.	DESCRIPTION	DATE	APPROVED
	A	INITIAL RELEASE	10-23-03	PB
	B	ITEM 2 WAS QTY 1 ITEM 14 WAS QTY 1 ITEM 9, 12 & 16 REVISED	12-4-03	DC
	C	RELOCATED ITEMS 5 & 7, ADDED SH 2	3-30-04	DC
	D	ITEM 13 REPLACED. WAS P/N 14428.	6-30-04	DC
	E	1 - ITEM 1 REPLACED. WAS P/N 2001. 2 - ITEM 4 QTY CHANGED. WAS 1X.	8-2-05	DC
	F	ITEM 10 REPLACED. WAS P/N 13814	11-18-05	DC



DETAIL B

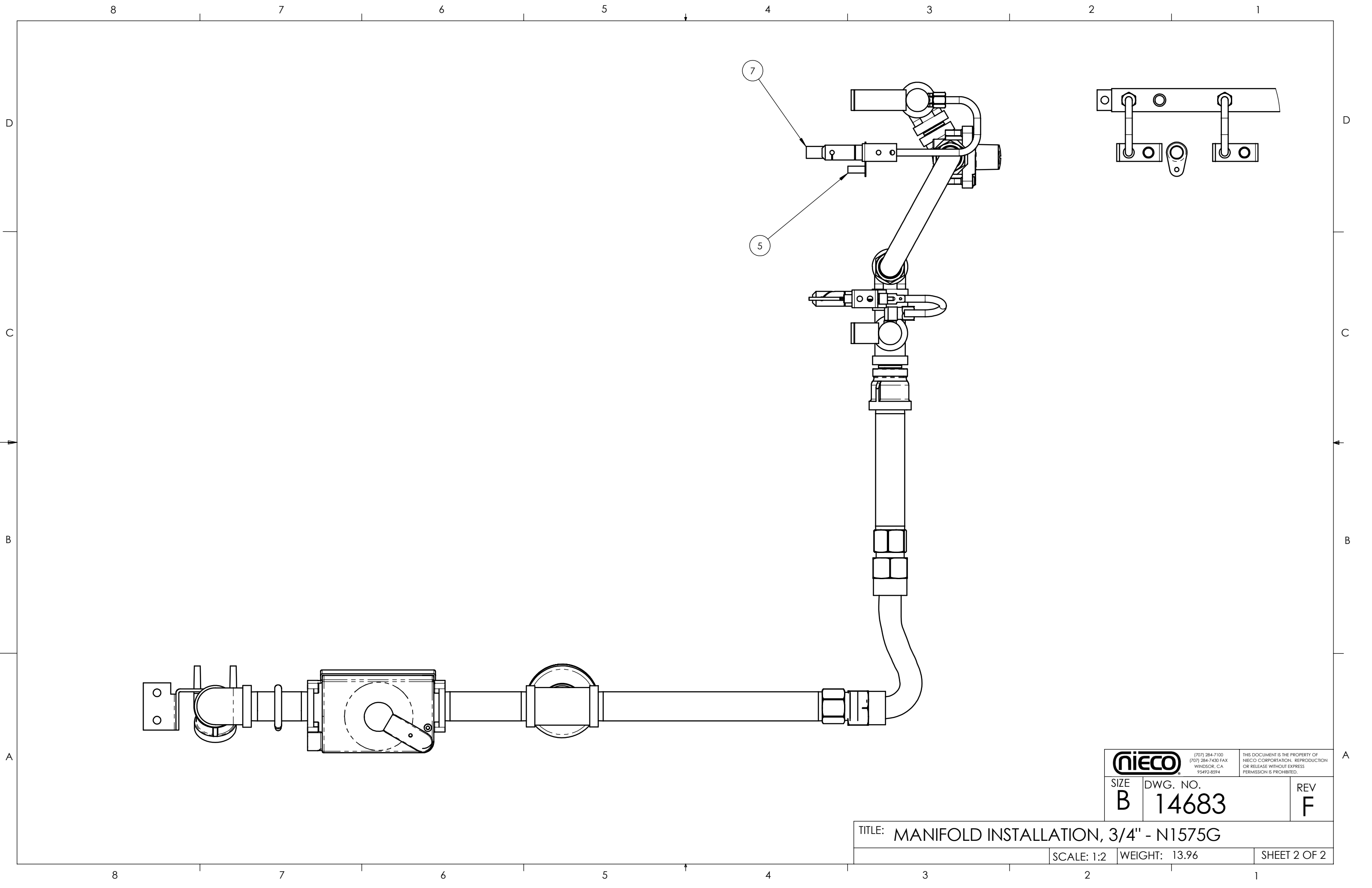
DETAIL A

QTY.	PART NO.	DESCRIPTION	ITEM NO.
1	14682	MANIFOLD, 4 BURNER - 3.5 CENTERS, 1" OFFSET, 3/4", ASSY	16
1	14681	MANIFOLD, LOWER, 3/4" - SUB ASSY	15
2	14429	BURNER, PILOT, CARRYOVER, INVERTED	14
1	14119	BURNER, PILOT (MODIFIED #2179)	13
1	14310	MANIFOLD, 4 BURNER-3.5 CENTERS, 2" OFFSET, ASSY	12
1	13989	BRACKET, MANIFOLD SUPPORT	11
1	16857	PROBE, FLAME SENSING, SNAP IN	10
1	13048	CONNECTOR, GAS, FLEXIBLE, 3/4 X 10"	9
1	13047	CONNECTOR, GAS, FLEXIBLE, 1/2" X 10"	8
1	10291	IGNITER, HOT SURFACE, 24V	7
1	9519	TUBING, 1/4", BUNDYWELD	6
1	8421-02	SPACER, 1/4" OD, 3/16" ID, 5/8" LONG, SS	5
2	5667	U-BOLT, 1/4-20 X 1-1/8 X 2"	4
1	5663	ELBOW, BRASS, MALE (69 X 4)	3
2	5662	CONNECTOR, BRASS MALE (68 X 4)	2
1	16036	GAUGE, GAS, 1% ACCURACY, 0-15"	1

UNLESS OTHERWISE SPECIFIED DIMS ARE IN INCHES

DATE	NAME	 <small>(707) 284-7100 (707) 284-7430 FAX WINDSOR, CA 95492-8594</small>	<small>THIS DOCUMENT IS THE PROPERTY OF NIECO CORPORATION. REPRODUCTION OR RELEASE WITHOUT EXPRESS PERMISSION IS PROHIBITED.</small>	
DRAWN	CJ			
DATE	NAME	SIZE	DWG. NO.	REV
CHECKED	PB	B	14683	F
MATERIAL	FINISH	SEE PARTS LIST		
TOLERANCES:		TITLE: MANIFOLD INSTALLATION, 3/4" - N1575G		
FRACTIONAL ±1/32		SCALE: 1:2	WEIGHT: 13.96	SHEET 1 OF 2
ANGULAR: ±1°				
TWO PLACE DECIMAL ±.02				
THREE PLACE DECIMAL ±.01				

14122	-
SIMILAR TO	USED ON
APPLICATION	



(707) 284-7100
 (707) 284-7430 FAX
 WINDSOR, CA
 95492-8594

THIS DOCUMENT IS THE PROPERTY OF
 NIECO CORPORATION. REPRODUCTION
 OR RELEASE WITHOUT EXPRESS
 PERMISSION IS PROHIBITED.

SIZE B	DWG. NO. 14683	REV F
------------------	--------------------------	-----------------

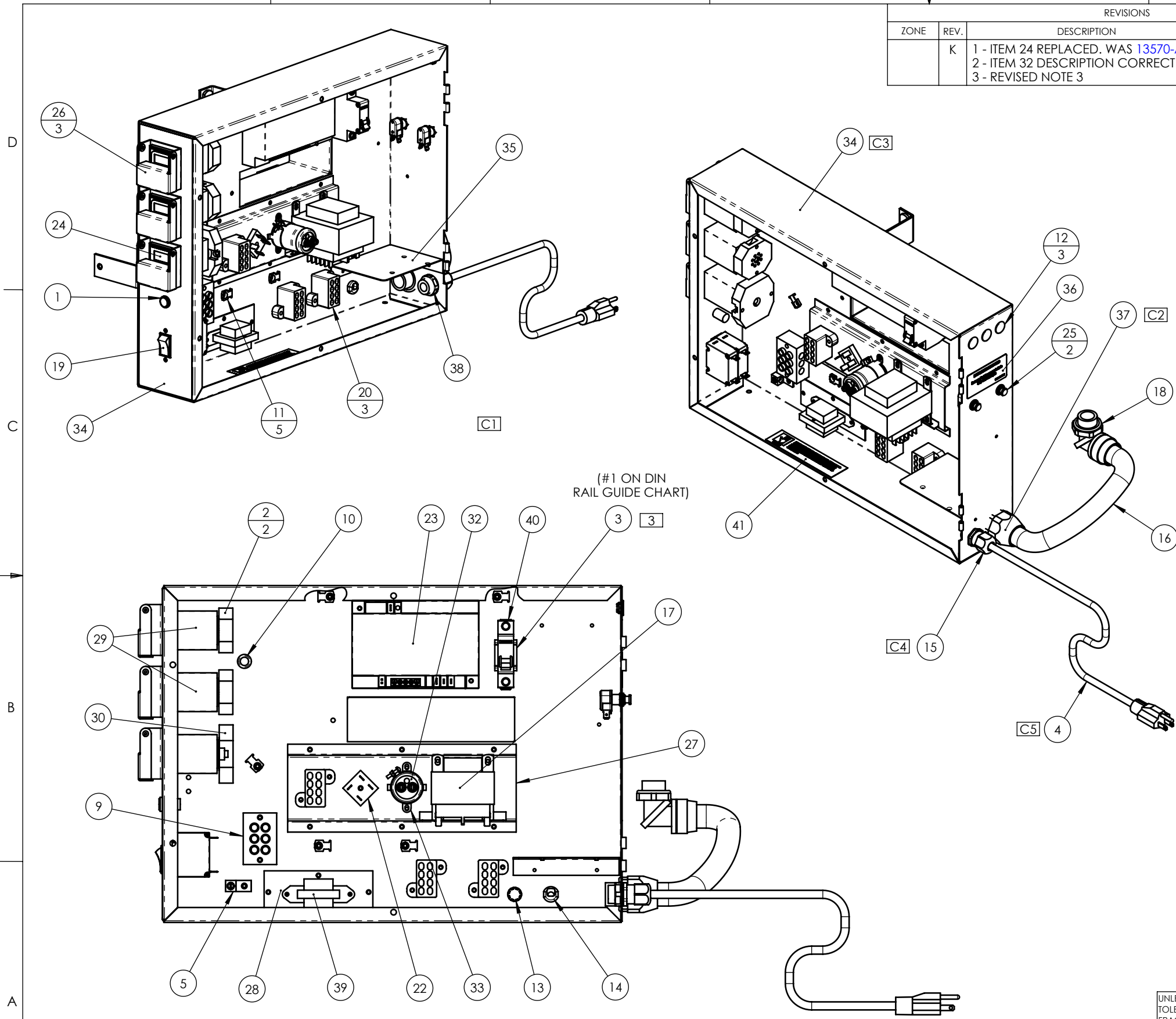
TITLE: MANIFOLD INSTALLATION, 3/4" - N1575G

SCALE: 1:2	WEIGHT: 13.96	SHEET 2 OF 2
------------	---------------	--------------

8 7 6 5 4 3 2 1

REVISIONS				
ZONE	REV.	DESCRIPTION	DATE	APPROVED
	K	1 - ITEM 24 REPLACED. WAS 13570-A. 2 - ITEM 32 DESCRIPTION CORRECTED. 3 - REVISED NOTE 3	4-10-06	DC

REVISIONS				
ZONE	REV.	DESCRIPTION	DATE	APPROVED
	A	INITIAL RELEASE	7-8-03	DC
5B	B	RELOCATE ITEM 15	9/25/03	PB
7C 4C 5D 4B 4B,G/N	C	ADD ITEM 38 ADD ITEM 37 UPDATE ITEM 34 TO LATEST REV ITEM 15 WAS P/N 5812 IS P/N 5833 SHOW ITEM 4 / DELETE NOTE 1	10/1/03	PB
	D	1-DELETED ITEM 6. 2-ITEM 31 REPLACED. WAS P/N 13771. 3-ITEM 26 REPLACED. WAS P/N 13625.	5-14-04	DC
	E	1-ITEM 24 REPLACED. WAS P/N 13570. 2-ADDED ITEM 39.	10-19-04	DC
	F	1-ITEM 31 REPLACED. WAS P/N 15364. 2-ITEM 11 QTY CHANGED. WAS 4X. 3-ADDED ITEM 40.	12-9-04	DC
5C	G	ADDED ITEM 41.	1-12-05	PB
	H	ITEM 31 REPLACED. WAS 15522	12-5-05	DC
	J	ITEM 23 REPLACED. WAS 12990.	1-31-06	DC



QTY.	PART NO.	DESCRIPTION	ITEM NO.
1	5081	STICKER, "POWER CONNECTIONS"	41
1	11965	CIRCUIT BREAKER, 20A	40
1	16031	TRANSFORMER, 120V PRI, 24V SEC, 5VA	39
1	5830	JAM NUT, 1/2 NPT, LIQUID TIGHT FITTING (5833)	38
1	5818	FITTING, FLEX CONDUIT, Ø3/4" STRAIGHT	37
1	14021	LABEL, BELT REVERSE BUTTONS, 1.50" X 3.0"	36
1	14016	BRACKET, SPARE PARTS, 2 BELT N SERIES	35
1	14014	ENCLOSURE, CONTROL BOX, 2 BELT N SERIES - WLDMT	34
1	13795	BRACKET, CAPACITOR, Ø1-3/8"	33
1	13794	CAPACITOR, 4700µF, 40 WVDC	32
1	15264	LABEL, CONTROL BOX, 2 BELT, N SERIES, BLACK	31
1	13737	SOCKET BASE, 11 PIN	30
2	13727	CONTROL, BRUSHLESS MOTOR	29
1	13669	PLATE, ACCESS COVER	28
1	13668	BRACKET, MODULAR POWER, CONTROL BOX	27
3	15328	COVER, GUARD, DIN CONTROL - ASSY	26
2	13579	SWITCH, MOTOR REVERSING	25
1	13570-B	CONTROL, LOAD SENSING, 1/16 DIN, 24V	24
1	16921	CONTROL, IGNITION, 24V	23
1	12725	RECTIFIER, SINGLE PHASE BRIDGE, 25A, 200V	22
3	12715	FUSE HOLDER, INLINE	21
3	12589	BLOCK, POWER DISTRIBUTION, 8 SPADE CONNECTIONS	20
1	12364	SWITCH, ON OFF, 30A, 2 POLE	19
1	10846	FITTING, FLEX CONDUIT, 3/4 SWIVEL	18
1	10529	TRANSFORMER, 240VAC INPUT, 24 VAC OUTPUT	17
1	5821	CONDUIT, FLEXIBLE, 3/4"	16
1	5833	FITTING, LIQUID TIGHT, 1/2 NPT	15
1	5696	BUSHING, STRAIN RELIEF, 5/8" MOUNTING HOLE	14
1	5682-05	PLUG, HOLE, SNAP IN, 5/8"	13
3	5682-04	PLUG, HOLE, SNAP IN, 1/2"	12
5	5674	OP MOUNTING PLATE, TY-RAP	11
1	5670	GROMMET, 3/8", RUBBER	10
1	4622	BLOCK, TERMINAL, 3 POLE, 90A, 600V	9
2	4621-02	FUSE, 2 AMP	8
4	4621-0050	FUSE, .5 AMP	7
1	4401	INDICATOR LIGHT, AMBER, 28V	6
1	4224-1	GROUND LUG GAS BROILERS (#TA-2)	5
1	4207	POWER CORD, 7 FT	4
3	4159-1	RAIL, DIN	3
2	4136	SCR BASE	2
1	4100	LIGHT, RED W/WIRES, MAIN (250V)	1

NOTE:
 1 - SEE WIRING DIAGRAM 14208 FOR LOCATION OF ITEMS 7, 8, & 21
 2 - QTY 1 OF ITEM 8 AND QTY 2 OF ITEM 7 TO BE PLACED IN CONTROL BOX AS SPARES.
 3 - CUT 1 LENGTH OF ITEM 3 TO APPROX. DIMENSION

UNLESS OTHERWISE SPECIFIED DIMS ARE IN INCHES		DATE	NAME	 <small>(707) 284-7100 (707) 284-7430 FAX WINDSOR, CA 95492-8594</small>	<small>THIS DOCUMENT IS THE PROPERTY OF NIICO CORPORATION. REPRODUCTION OR RELEASE WITHOUT EXPRESS PERMISSION IS PROHIBITED.</small>
TOLERANCES: FRACTIONAL ±1/32 ANGULAR: ±1° TWO PLACE DECIMAL ±.02 THREE PLACE DECIMAL ±.01		6-27-03	CJ		
MATERIAL		CHECKED	DC	SIZE	DWG. NO. B 14303
SEE PARTS LIST		FINISH	----	REV	
TITLE: CONTROL BOX, 2 BELT N, 115 V, RF - ASSY		SCALE: 1:2		WEIGHT: 26.10	SHEET 1 OF 1

13933	14125
SIMILAR TO	USED ON
APPLICATION	

8 7 6 5 4 3 2 1

8

7

6

5

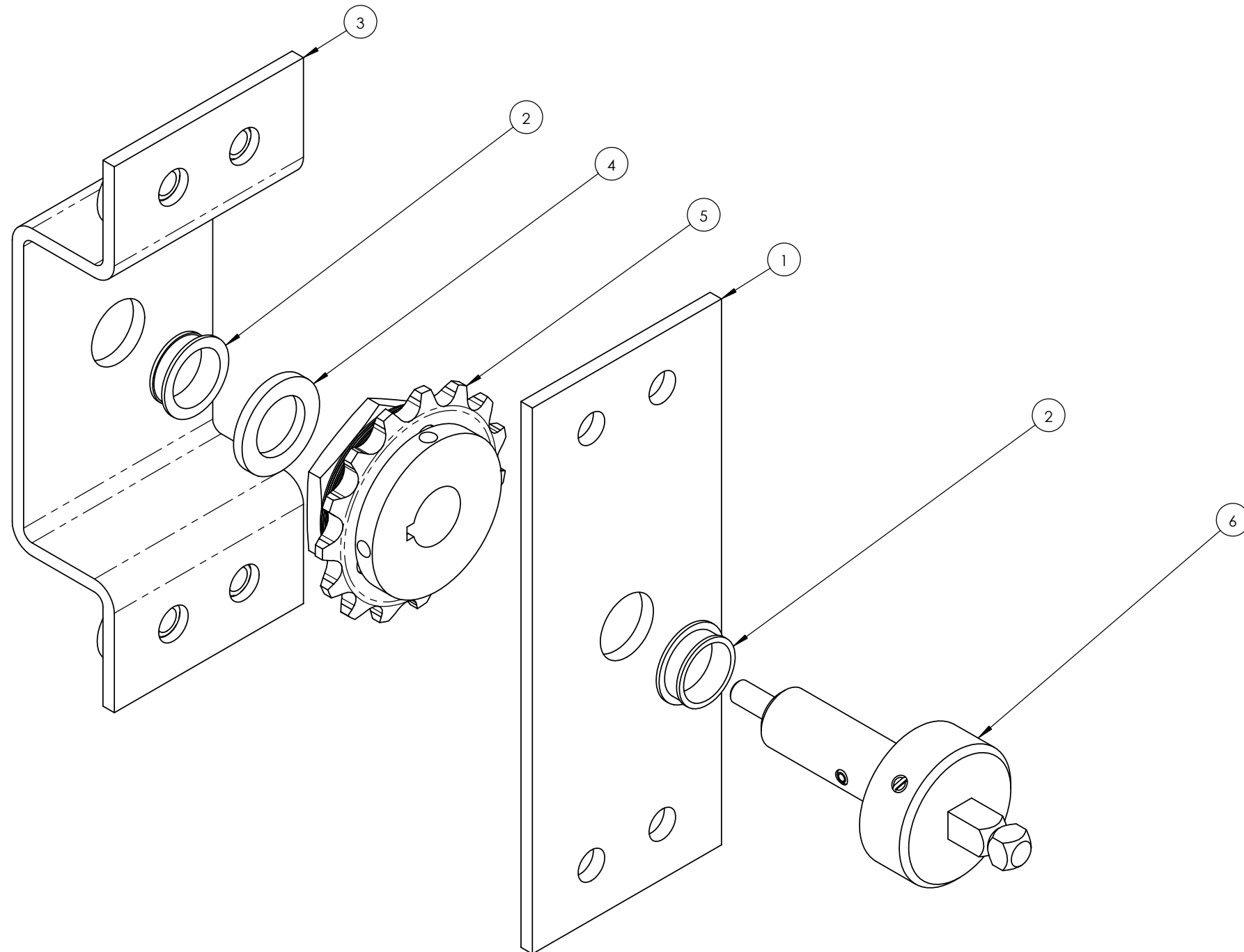
4

3

2


1

REVISIONS				
ZONE	REV.	DESCRIPTION	DATE	APPROVED
	A	INITIAL RELEASE	10-16-03	VS
	B	ITEM 4 QTY WAS 2	10-29-03	VS



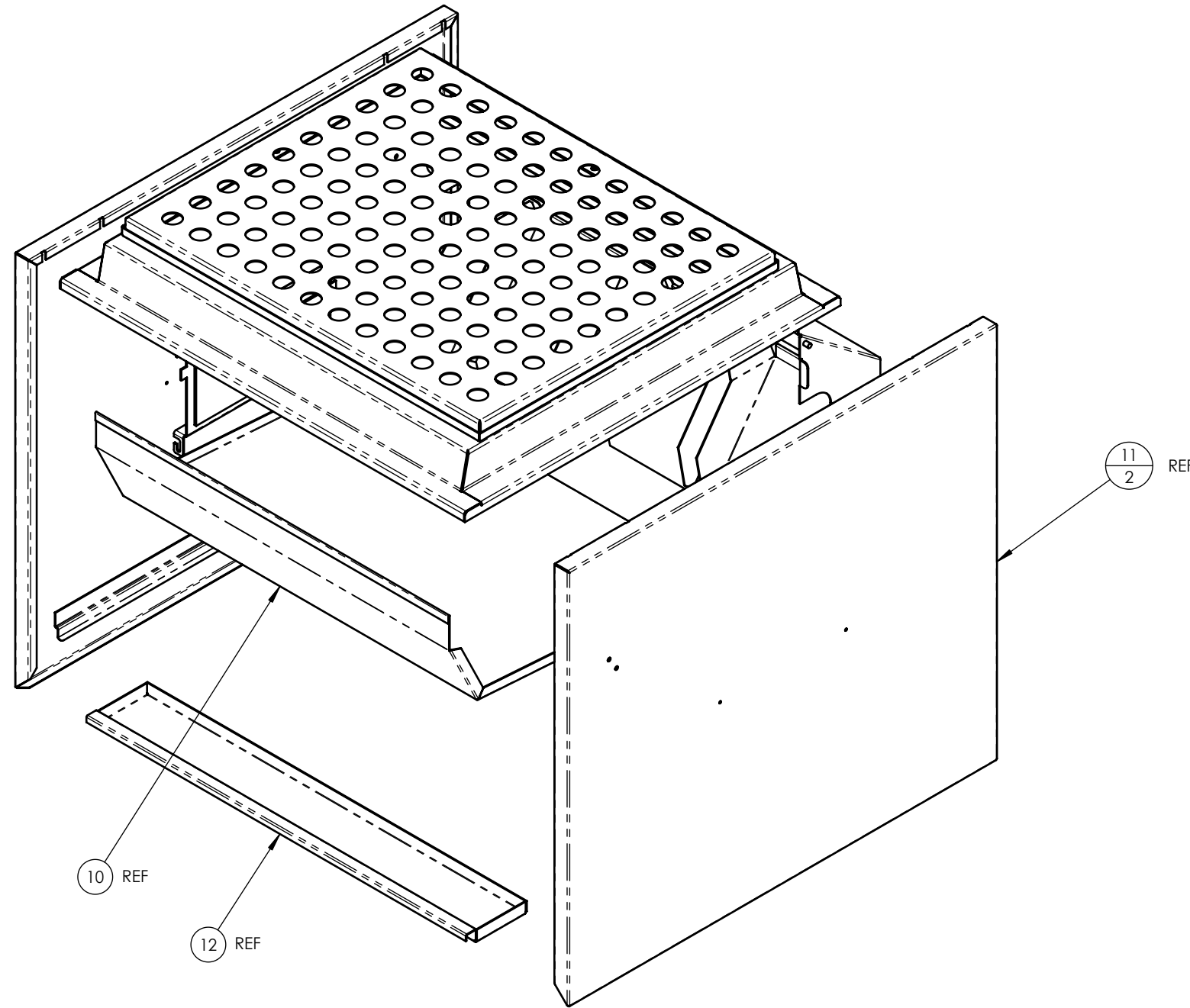
QTY.	PART NO.	DESCRIPTION	ITEM NO.
1	14298	PIN, FEEDER, SHORT - ASSY	6
1	14296	SPROCKET, CLUTCHED, 15T, BELLEVILLE SPRING	5
1	10275	SPACER, SPUR GEAR, 36T	4
1	10640	BRACKET, BEARING, FEEDER DRIVE - WMT	3
2	10627	BEARING CLIP, Ø1/2" ID, .12 THK	2
1	10636	PLATE, BEARING, FEEDER DRIVE	1

NOTE:
1.


UNLESS OTHERWISE SPECIFIED DIMS ARE IN INCHES		DATE	NAME	 <small>(707) 284-7100 (707) 284-7430 FAX WINDSOR, CA 95492-8594</small>	<small>THIS DOCUMENT IS THE PROPERTY OF niECO CORPORATION. REPRODUCTION OR RELEASE WITHOUT EXPRESS PERMISSION IS PROHIBITED.</small>
TOLERANCES: FRACTIONAL ±1/32 ANGULAR: ±1° TWO PLACE DECIMAL ±.02 THREE PLACE DECIMAL ±.01		DRAWN	10-16-03		
MATERIAL		CHECKED	-	-	SIZE B
FINISH -		DWG. NO. 14297		REV B	
TITLE: FEEDER DRIVE, BELLEVILLE SPRING CLUTCH - ASSY					SCALE: 1:1 WEIGHT: 0.738
SIMILAR TO -		USED ON -		SHEET 1 OF 1	
APPLICATION					

8 7 6 5 4 3 2 1

REVISIONS				
ZONE	REV.	DESCRIPTION	DATE	APPROVED
	A	INITIAL RELEASE	7-7-03	DC
	B	ITEM 3, P/N IS 11863, WAS 13698	8-12-03	DC
	C	1-REPLACED ITEM 3 WITH ITEM 14 2-REPLACED ITEM 9 WITH ITEM 13	9-29-06	DC



QTY.	PART NO.	DESCRIPTION	ITEM NO.
1	17491	INSERT, PERFORATED, 20" X 24", 1" HOLES	14
1	17490	HOOD, 20" X 24" CATALYST, N700/N800 - WLDMT	13
1	14168	TRAY, GREASE DRIP - 25-5/8 X 4-1/8	12
2	14167	PANEL, SIDE, 29 L X 25.5 H - WLDMT	11
1	14145	GREASE PAN - FRONT, 24 X 19.12	10
1	14142	HOOD - 24.5 X 23 FRAME - WLDMT	9
1	13984	COVER, CONTROL BOX, 14.88 X 20.49" - WLDMT	8
1	13905	DOOR, HINGED BURNER ACCESS - WLDMT	7
3	13832	DIVIDER, SLIDE	6
1	13831	SLIDE, RETURN FLOW, 3 LANE, 24.5" WIDE - WLDMT	5
1	12861	AWNING, DISCHARGE, PIVOTING, 24-1/2" - WLDMT	4
1	11863	INSERT, PERFORATED, 18 X 24, 1" HOLES	3
1	9128	TOOL, SHAFT CLEANING	2
2	4448-03	HINGE PIN	1

UNLESS OTHERWISE SPECIFIED DIMS ARE IN INCHES		DATE	NAME	 <small>(707) 284-7100 (707) 284-7430 FAX WINDSOR, CA 95492-8594</small>	<small>THIS DOCUMENT IS THE PROPERTY OF NICO CORPORATION. REPRODUCTION OR RELEASE WITHOUT EXPRESS PERMISSION IS PROHIBITED.</small>
TOLERANCES: FRACTIONAL ±1/32 ANGULAR: ±1° TWO PLACE DECIMAL ±.02 THREE PLACE DECIMAL ±.01		DRAWN	6-30-03		
MATERIAL		CHECKED	7-7-03	DC	
SEE PARTS LIST		FINISH		-----	
TITLE: SHIELDS, PANS, ETC. - N1575G					
SIMILAR TO		USED ON		SCALE: 1:2	WEIGHT:
APPLICATION				SHEET 1 OF 2	

8 7 6 5 4 3 2 1

8 7 6 5 4 3 2 1

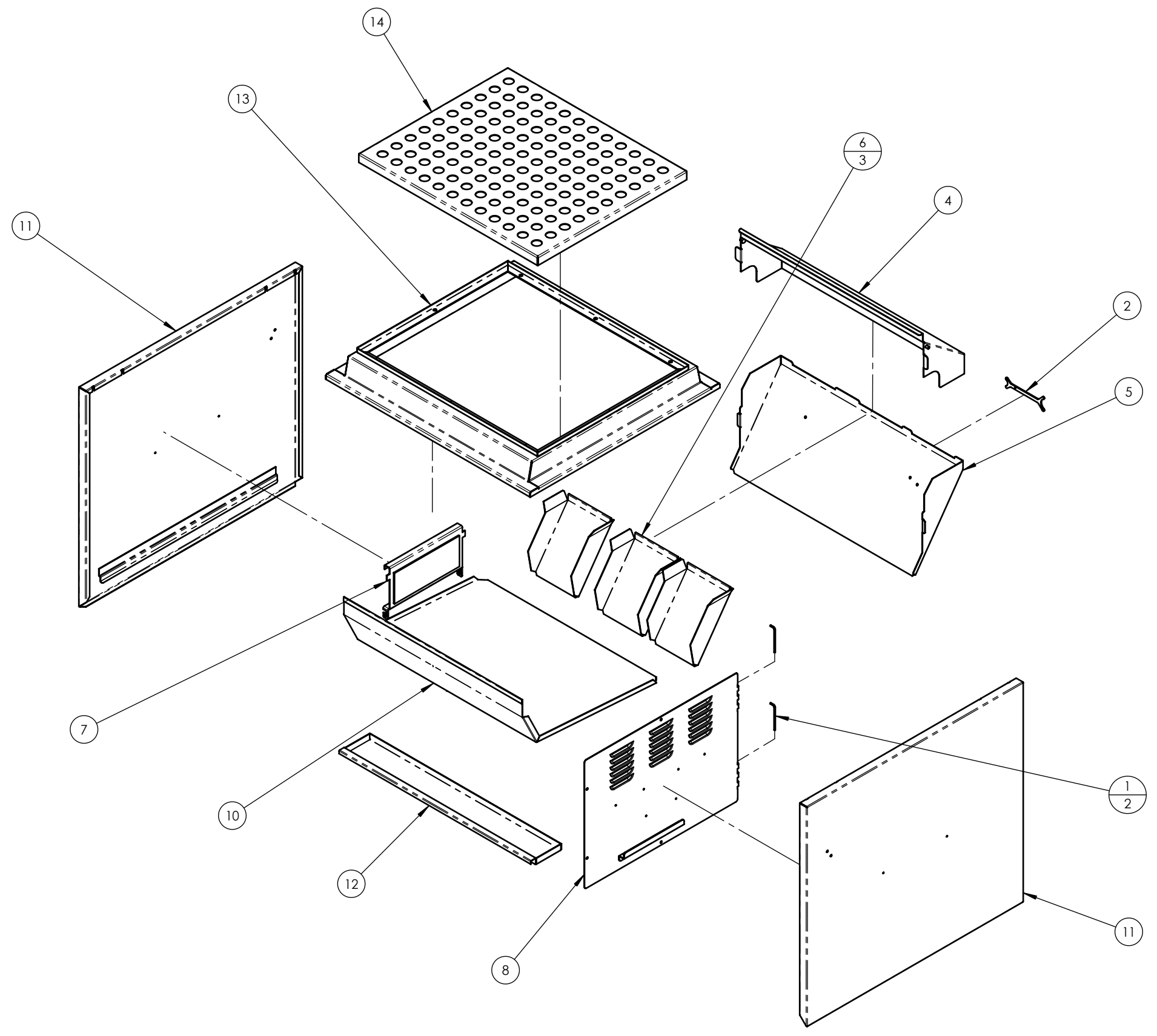
D
C
B
A

D
C
B
A

8 7 6 5 4 3 2 1

D
C
B
A

D
C
B
A



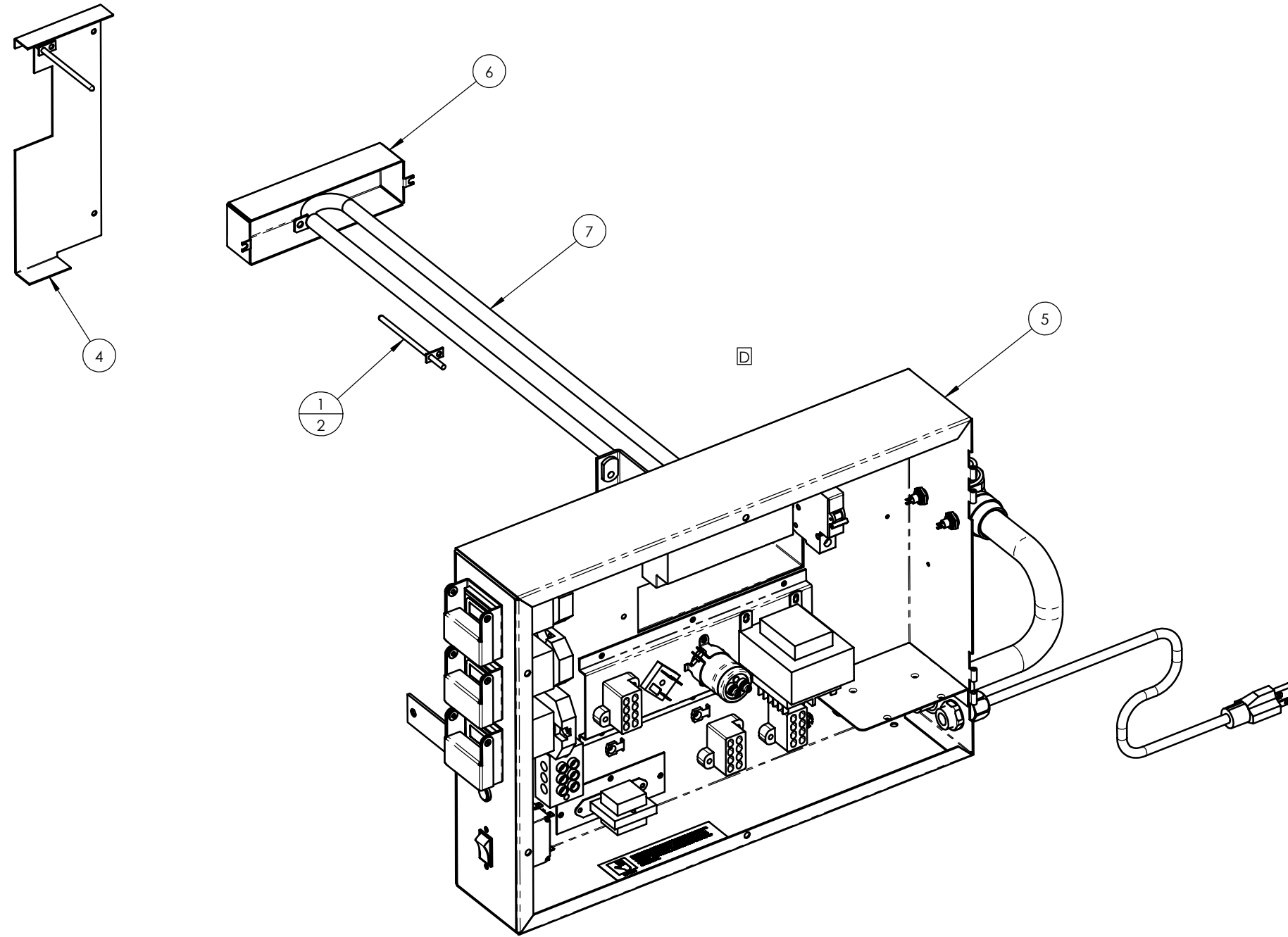
niECO		(707) 284-7100 (707) 284-7430 FAX WINDSOR, CA 95492-8594	THIS DOCUMENT IS THE PROPERTY OF niECO CORPORATION. REPRODUCTION OR RELEASE WITHOUT EXPRESS PERMISSION IS PROHIBITED.
SIZE B	DWG. NO. 14126	REV C	

TITLE: SHIELDS, PANS, ETC. - N1575G

SCALE: 1:2 WEIGHT: SHEET 2 OF 2


8 7 6 5 4 3 2 1

REVISIONS				
ZONE	REV.	DESCRIPTION	DATE	APPROVED
	A	INITIAL RELEASE	7-8-03	DC
	B	ADDED ITEMS 6 & 7.	8-6-03	DC
	C	UPDATED ITEM 5 TO LATEST REV	10/1/03	PB
6C	D	DELETED ITEMS 2 & 3 PER ECR 70	4/21/04	DI
	E	ITEM 1 REPLACED. WAS P/N 12739.	8-12-04	DC
	F	ADDED ITEM 8.	12-22-04	PB



NOTE:
1 - ITEM 8 NOT SHOWN. IS ADDED WHEN WIRES ARE CONNECTED TO THE ELEMENT.

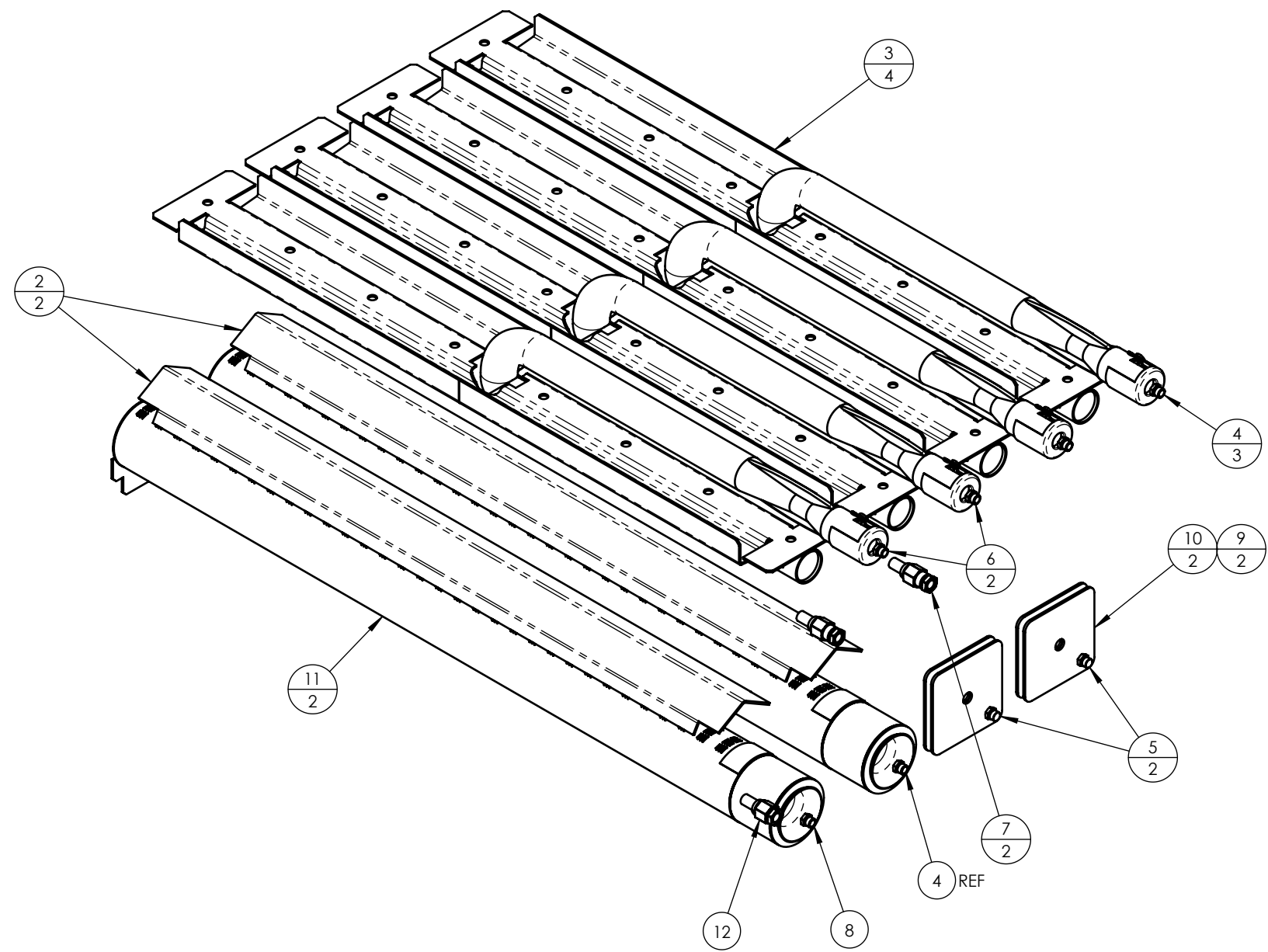
QTY.	PART NO.	DESCRIPTION	ITEM NO.
2	5894	TUBE, SILICONE, .420" ID X 2" LONG	8
1	13654	HEATER ELEMENT, 24", 120V HAIRPIN	7
1	12182	COVER, THERMOSTAT	6
1	14303	CONTROL BOX, 2 BELT N SERIES, 115 VAC, FT - ASSY	5
1	14165	COVER, THERMAL PROBE WIRE	4
1	14013	RAIL, MOUNTING, MODULAR TERMINAL BLOCK	3
1	13738	TERMINAL BLOCK, 10 PIN RECEPTICLE	2
2	15576	THERMOCOUPLE PROBE, W/SS OVER BRAID, TYPE J, 60" LEADS	1

UNLESS OTHERWISE SPECIFIED DIMS ARE IN INCHES		DATE	NAME	 <small>(707) 284-7100 (707) 284-7430 FAX WINDSOR, CA 95492-8594</small>	<small>THIS DOCUMENT IS THE PROPERTY OF NIECO CORPORATION. REPRODUCTION OR RELEASE WITHOUT EXPRESS PERMISSION IS PROHIBITED.</small>
TOLERANCES: FRACTIONAL ±1/32 ANGULAR: ±1° TWO PLACE DECIMAL ±.02 THREE PLACE DECIMAL ±.01		DRAWN	6-27-03		
MATERIAL SEE PARTS LIST		CHECKED	7-8-03	DC	SIZE B
FINISH		-----		DWG. NO. 14125	REV F
TITLE: ELECTRICAL INSTALLATION - N1575G					
SCALE: 1:2		WEIGHT: 26.09		SHEET 1 OF 1	

13957	90084 90081
SIMILAR TO	USED ON
APPLICATION	

8 7 6 5 4 3 2 1

REVISIONS				
ZONE	REV.	DESCRIPTION	DATE	APPROVED
	A	INITIAL RELEASE	7-7-03	DC
	B	1 - ITEM 6 QUANTITY WAS 6X. 2 - ADDED ITEM 8.	8-6-03	DC
	C	ADDED ITEMS 9 & 10 PER ECR 62	10-2-03	PB
	D	1-ITEMS 7 REPLACED. WAS P/N 2018 2-PER ECR 89.	11-17-03	PB
	E	ITEM 7 QTY WAS 2	12-11-03	DC
	F	REPLACE ITEM 1 WITH ITEM 11 PER ECR 110	1-9-04	DC
3A	G	1-ITEM 7 QUANTITY WAS 3 2-ADDED ITEM 12	4-12-05	DC
	H	ITEMS 3 REPLACED. WAS P/N 14130.	5-30-06	PB
	J	ITEMS 11 REPLACED. WAS P/N 14240.	6-18-07	PB



QTY.	PART NO.	DESCRIPTION	ITEM NO.
[G2]	1	2047 ORIFICE, PILOT, TOWN GAS (5232)	12
	2	17886 BURNER, EXTENDED, Ø2" OD, 32 PORTS - WLDMT	11
	2	14578 COVER PLATE W/WASHER, LOWER BURNER - WLDMT	10
	2	14579 COVER PLATE W/WELDNUT, LOWER BURNER - WLDMT	9
	1	2061 ORIFICE, BURNER, #36	8
[G1]	2	2182 ORIFICE, PILOT (3225)	7
	2	2014 ORIFICE, BURNER, #50	6
	2	2070 ORIFICE, BURNER, BLANK	5
	3	2015 ORIFICE, BURNER, #48	4
	4	16134 BURNER W/REFLECTOR, GOOSENECK - 23.5" - WLDMT	3
	2	14017 SHIELD, BURNER, 24.5" FRAME	2
	±	13942 BURNER, CONVECTION, Ø2 OD X 25" - WLDMT	±

UNLESS OTHERWISE SPECIFIED DIMS ARE IN INCHES

TOLERANCES: FRACTIONAL ±1/32 ANGULAR: ±1° TWO PLACE DECIMAL ±.02 THREE PLACE DECIMAL ±.01	DATE 6-27-03	NAME CJ	 <small>(707) 284-7100 (707) 284-7430 FAX WINDSOR, CA 95492-8594</small>	<small>THIS DOCUMENT IS THE PROPERTY OF NIECO CORPORATION. REPRODUCTION OR RELEASE WITHOUT EXPRESS PERMISSION IS PROHIBITED.</small>	
MATERIAL SEE PARTS LIST	CHECKED 7-7-03	DC			SIZE B

TITLE: **NATURAL GAS INSTALLATION - N1575G**

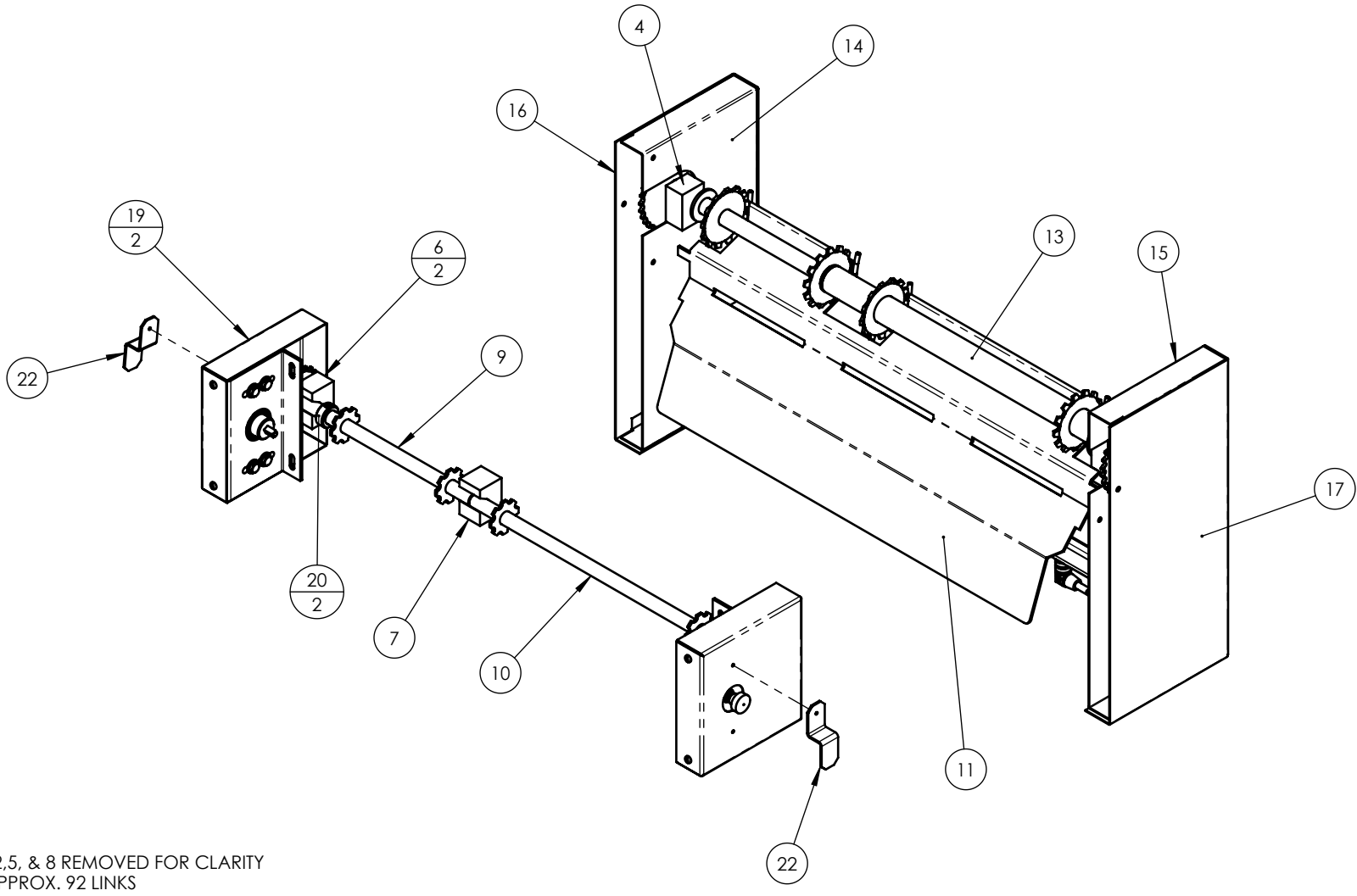
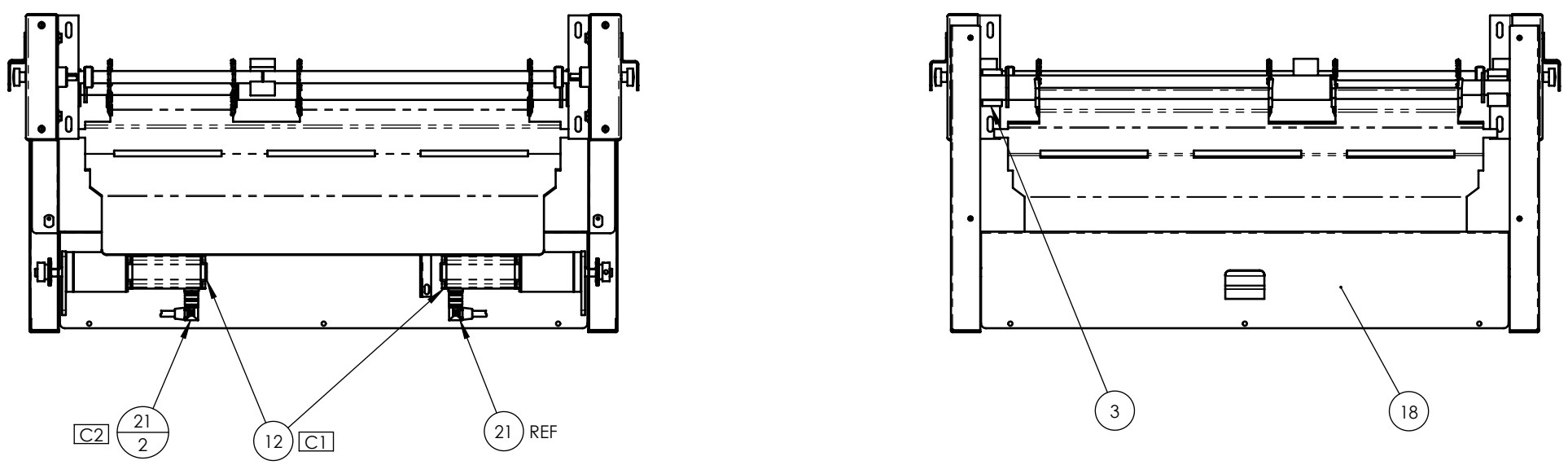
SCALE: 1:2 WEIGHT: 20.32 SHEET 1 OF 1

SIMILAR TO	USED ON
APPLICATION	

8 7 6 5 4 3 2 1

8 7 6 5 4 3 2 1

REVISIONS				
ZONE	REV.	DESCRIPTION	DATE	APPROVED
	A	INITIAL RELEASE	6-24-03	DC
	B	1-ITEM 7 REPLACED. WAS P/N 14312. 2-PER ECR 90	11-14-03	PB
7C 8C	C	1- ITEM 12 WAS P/N 13821 IS 14813 2- ADDED ITEM 21 PER ECR 70	4-08-04	PB
	D	REPLACED ITEM 19, WAS P/N 14170	9-6-05	DC
	E	ADDED ITEM 22.	8-8-07	CW



NOTE:
 1 - ITEMS 1,2,5, & 8 REMOVED FOR CLARITY
 2 - ITEM 2 APPROX. 92 LINKS
 3 - ITEM 8 APPROX. 92 LINKS

QTY.	PART NO.	DESCRIPTION	ITEM NO.
2	17494	BRACKET, CLUTCH RESTRAINT, FEEDER DRIVE	22
2	14815	CABLE W/RIGHT ANGLE FITTING, 24V MOTOR - 5 FT	21
2	6726	SET COLLAR, Ø.56 BORE, ZINC PLATED	20
2	14300	DRIVE ASSY, FEEDER, CLUTCHED, INT., UNIVERSAL	19
1	13993	COVER, MOTOR ENCLOSURE - WLDMT	18
1	13983	COVER, CHAIN GUARD - RIGHT	17
1	13982	COVER, CHAIN GUARD - LEFT	16
1	13981	CHAIN GUARD - RIGHT INNER - WLDMT	15
1	13979	CHAIN GUARD - LEFT INNER - WLDMT	14
1	13930	DRIVE SHAFT, 13.5 & 7.5" BELT - ASSY	13
2	14813	MOTOR W/10T SPROCKET, 24V, INNER DRIVE - ASSY	12
1	13597	STRIPPER BLADE, 13 & 7-1/2" BELT - WLDMT	11
1	12873	IDLER ROD, KEYED Ø5/8 X 18.09 LONG, 13" BELT - WLDMT	10
1	12871	IDLER ROD, KEYED, 5/8 X 11.88 LONG, 7.5 BELT - WLDMT	9
1	10508	ROD BELT, 7 GA., 5/8" PITCH, 7.5" WIDE	8
1	14249	BEARING, ALUMINUM BRONZE, Ø5/8 SHAFT X 1-1/4 WIDE	7
2	6049	BEARING, TEFLON, 1"W X 1-7/8"H, Ø5/8" SHAFT	6
2	6048	MASTER LINK, #35 ROLLER CHAIN	5
1	6047	BEARING, TEFLON, 1"W X 1-7/8"H, Ø3/4" SHAFT	4
1	6046	BEARING, TEFLON, 1"W X 1-7/8"H, Ø1-1/4" SHAFT	3
1	6035	ROD BELT, 7 GA., 5/8" PITCH, 13" WIDE	2
1	6027	CHAIN, ROLLER, #35	1

UNLESS OTHERWISE SPECIFIED DIMS ARE IN INCHES		DATE	NAME	 <small>(707) 284-7100 (707) 284-7430 FAX WINDSOR, CA 95492-8594</small>	<small>THIS DOCUMENT IS THE PROPERTY OF NIICO CORPORATION. REPRODUCTION OR RELEASE WITHOUT EXPRESS PERMISSION IS PROHIBITED.</small>
TOLERANCES: FRACTIONAL ±1/32 ANGULAR: ±1° TWO PLACE DECIMAL ±.02 THREE PLACE DECIMAL ±.01		DRAWN	6-23-03		
MATERIAL		CHECKED	6-24-03	DC	SIZE B
SEE PARTS LIST		FINISH		DWG. NO. 14123	
TITLE: CONVEYOR INSTALLATION - N1575G					
SCALE: 1:2		WEIGHT: 47.45		SHEET 1 OF 1	

SIMILAR TO	USED ON
APPLICATION	

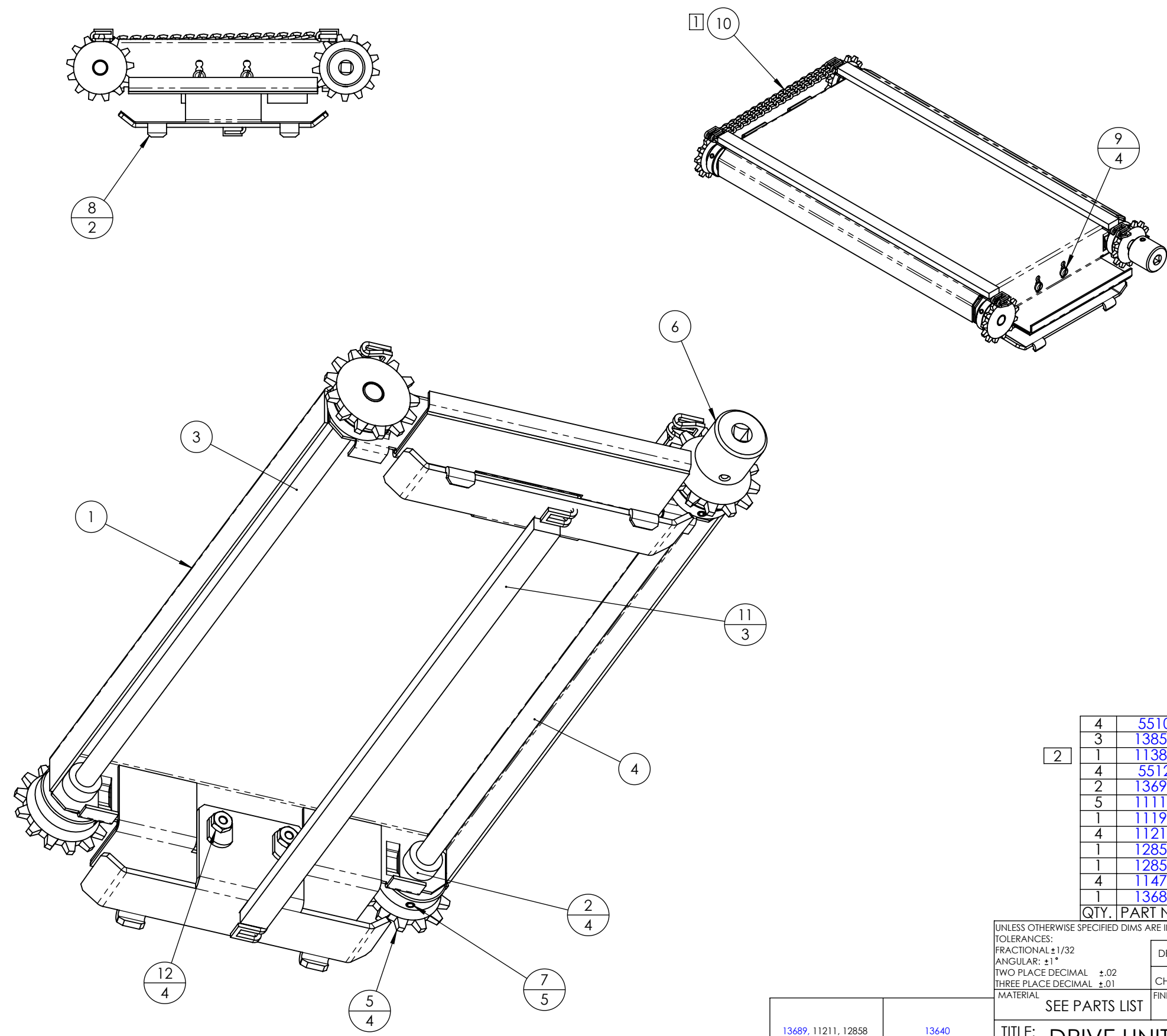
8 7 6 5 4 3 2 1

8 7 6 5 4 3 2 1

REVISIONS				
ZONE	REV.	DESCRIPTION	DATE	APPROVED
	A	INITIAL RELEASE	1-8-03	VS
	B	RIVET, SPRING & TENSIONER DELETED TENSIONER ASSY & SCREWS ADDED	1-28-03	VS
	C	REVERSED CHAIN, REPLACED PUSH BARS, ADDED JAM NUTS	3-26-03	VS

D
C
B
A

D
C
B
A



NOTES:
 [1] ITEM 10 TO BE ASSEMBLED IN 16 LINK SECTIONS BETWEEN INSTANCES OF ITEM 11. 5 PCS OMITTED FOR CLARITY
 [2] 6 X 16 = 96 LINKS PER DRIVE UNIT
 96 X .353/12 = 2.824 FEET CHAIN

QTY.	PART NO.	DESCRIPTION	ITEM NO.
	4 5510	NUT, HEX, SS, 8-32	12
	3 13858	PUSH BAR, FEEDER - 2 LANE - WLDMT	11
[2]	1 11381	CHAIN, LADDER, .353 PITCH	10
	4 5512	SCREW, PAN HEAD, 8-32 X 3/8"	9
	2 13691	TENSIONER, FIXED, LADDER CHAIN, 16 LINK	8
	5 11114	ROLL PIN, Ø1/8 X 1", SS	7
	1 11194	COUPLER, DRIVE, 1/4" SQ X Ø3/8" ID	6
	4 11217	SPROCKET, ROLLER CHAIN, 13T, Ø3/8 BORE	5
	1 12855	DRIVE SHAFT, FEEDER, Ø3/8 X 15.22"	4
	1 12854	SHAFT, IDLER, FEEDER, Ø3/8 X 14.44"	3
	4 11478	BUSHING, FLANGED, Ø3/8" SHAFT, W/FLAT	2
	1 13686	PLATFORM, 13" - FEEDER, 5.65" SPACING - WLDMT	1

UNLESS OTHERWISE SPECIFIED DIMS ARE IN INCHES		DATE	NAME	 <small>(707) 284-7100 (707) 284-7430 FAX WINDSOR, CA 95492-8594</small>	<small>THIS DOCUMENT IS THE PROPERTY OF NIECO CORPORATION. REPRODUCTION OR RELEASE WITHOUT EXPRESS PERMISSION IS PROHIBITED.</small>
TOLERANCES: FRACTIONAL ±1/32 ANGULAR: ±1° TWO PLACE DECIMAL ±.02 THREE PLACE DECIMAL ±.01		DRAWN	1-8-03		
MATERIAL		CHECKED	-	-	SIZE
SEE PARTS LIST		FINISH	-	-	DWG. NO.
				 13690	
				REV	
				C	
TITLE: DRIVE UNIT, FEEDER - 13" - ASSY					
		SCALE: 1:4	WEIGHT: 6.386	SHEET 1 OF 1	

13689, 11211, 12858	13640
SIMILAR TO	USED ON
APPLICATION	

8 7 6 5 4 3 2 1