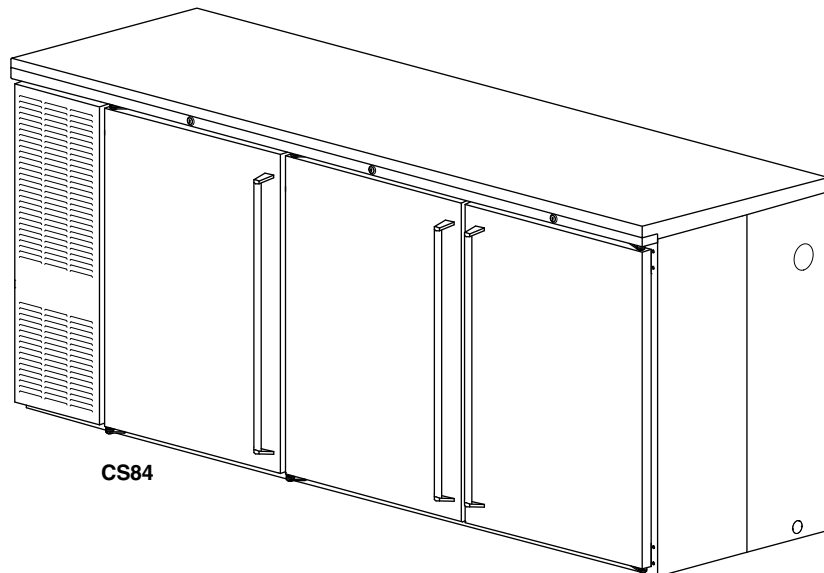


# INSTALLATION AND OPERATION INSTRUCTIONS

## STANDARD BACK BAR COOLERS — SELF CONTAINED

### MODEL NOS.

CS Series



CS84

### IMPORTANT INFORMATION

To register your product, visit our web site at ([www.perlick.com](http://www.perlick.com)). Click on “Commercial”, then “Service”. You will see the link to “Warranty Registration Form”. You must complete and submit this form or the installation date will revert back to the ship Date.

This manual has been prepared to assist you in the installation of your Cabinet and to acquaint you with its operation and maintenance.

We dedicate considerable time to ensure that our products provide the highest level of customer satisfaction. If service is required, your dealer can provide you with a list of qualified service agents. For your own protection, never return merchandise for credit without our approval.

We thank you for selecting a Perlick product and assure you of our continuing interest in your satisfaction.

**WARNING: When lifting, the full weight of the cabinet must be supported. Lift from the cabinet base and not from the top. Improper lifting can result in severe damage to the cabinet.**

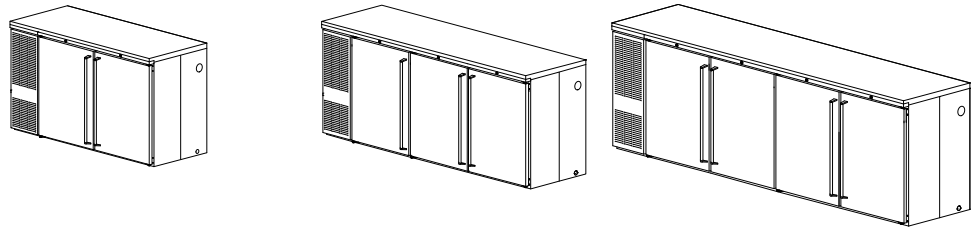
### Table of Contents

PREPARING THE CABINET	
Specifications .....	2
List of Included Parts.....	3
Tools Required .....	3
Plumbing.....	3
Electrical .....	3
Installing Casters or Legs .....	3
TEMPERATURE	
Refrigeration and Temperature Control .....	4
CLEANING	
Cleaning the Cabinet.....	4
Cleaning Stainless Steel .....	4
Replacement Parts.....	5
Reversing Door Hinge .....	6
Wiring Diagram.....	7



# Installation and Operating Instructions

## Sizes and Specifications, Standard Back Bar Coolers – Self Contained



### DOOR FINISH

### MODEL NUMBERS

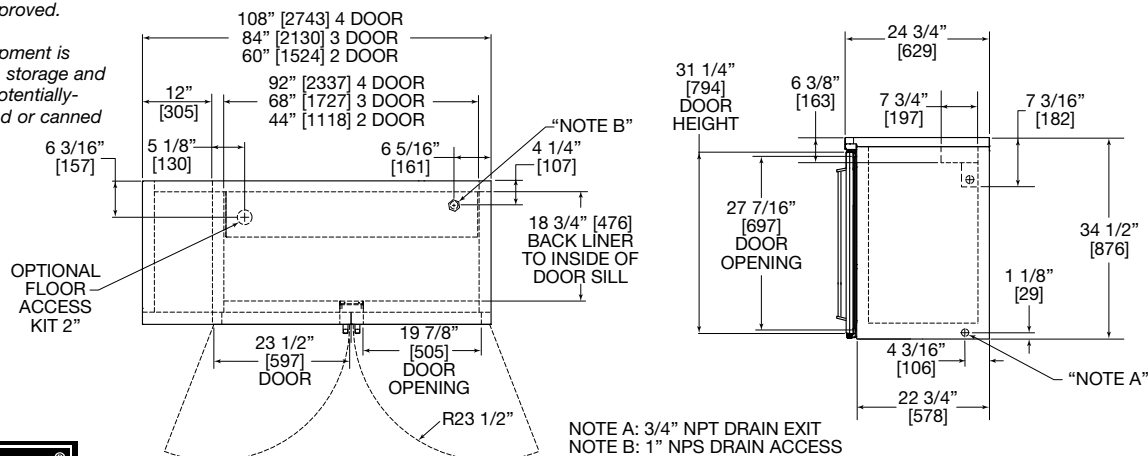
BLACK	CS60SB*	CS84SB*	CS108SB
BLACK W/GLASS DOORS	CS60SG	CS84SG	CS108SG
STAINLESS	CS60SS*	CS84SS*	CS108SS
STAINLESS W/GLASS DOORS	CS60ST	CS84ST	CS108ST

### SPECIFICATIONS

NUMBER OF DOORS	2	3	4
CABINET LENGTH Ins. (mm)	60" (1524)	84" (2134)	108" (2743)
NUMBER OF SHELVES	4	6	8
CASE CAPACITY (based on 12oz. Long Neck Bottle)	15	24	32
CONDENSING UNIT H.P.	1/4	1/3	1/3
RUNNING LOAD - AMPS	5.9	7.5	7.5
SHIP WT Lbs. (kg)	380 (172)	490 (222)	630 (286)
INTERIOR	<b>Door sill:</b> High strength polyethylene. <b>Door pan and ceiling:</b> High strength polystyrene. <b>Floor pan:</b> Stainless steel. <b>Walls:</b> Galvanized steel. Vinyl coated shelves. Includes interior light.		
EXTERIOR	Front, back, top and sides stainless steel. Bottom galvanized steel. See optional accessories for door and grille finishes.		
DOOR HINGING	Stainless steel hinges with standard locations as illustrated. For special hinging specify hinge locations starting from left to right. Field reversible.		
DOOR HARDWARE	<b>Door handles:</b> Full length stainless steel handle. <b>Lock finish:</b> chrome		
REFRIGERATION	R-134A capillary tube-type. Aluminum fin and copper tube evaporator, epoxy coated coil. Adjustable temperature control. Self-defrosting. Pull-out condensing unit for service and cleaning. Compressor left, standard.		
ELECTRICAL	115V, 60Hz., 1 phase AC. Furnished with 3-prong, 6 foot NEMA5-15P cord. Contact Perlick for other voltage/ frequency requirements.		
PLUMBING	Evaporator condensate is removed automatically. Optional floor drain with 3/4" NPT at right end or 1" NPS out bottom come plugged from factory.		
INSULATION	Foamed-in-place polyurethane, 2" walls, 1 1/2" top.		
OPTIONAL ACCESSORIES & MODIFICATIONS	<ul style="list-style-type: none"> <li>• Leg set</li> <li>• Caster sets</li> <li>• Base plates</li> </ul> <b>Grille finishes</b> <ul style="list-style-type: none"> <li>• Black vinyl coated</li> <li>• Stainless steel</li> </ul>		

\* Energy Star approved.

NOTE: This equipment is intended for the storage and display of non-potentially-hazardous bottled or canned products only.



Perlick is committed to continuous improvement. Therefore, we reserve the right to change specifications without prior notice.

# Preparing the Cabinet for Use

## Parts List

- (2) Shelves plus (1) Floor Rack-per door.
- Shelf Clips.

## Suggested Tools

- #2 Phillips Screwdriver.
- 10" Crescent Wrench.
- $\frac{9}{16}$ " Allen Wrench.
- $\frac{5}{16}$ " and  $\frac{3}{8}$ " Hex Socket.
- Power Drill or Driver.

## Plumbing

Condensate from the cooling coil is automatically evaporated through a condensate pan located in the condensing unit housing. Each unit is also equipped with a floor drain located in the right rear corner of the cabinet. The drain can be plumbed to an external floor drain by connecting to the  $\frac{3}{4}$ " NPT thread out the side or the 1" NPS thread out the bottom. Both drains ports come plugged from the factory and can be removed if needed.

## Electrical

The cabinet must be connected to a separately fused power source (see electrical specification plate) and grounded in accordance with National and Local Electrical Codes. Caution: Do not attempt to operate the equipment on any other power source than that listed on the Electrical Specification plate.

## Uncrating and Inspecting

Remove all crating material before operating. Carefully inspect cabinet for hidden damage. If damage is discovered, file your claim immediately with the transportation company. Perlick is not responsible for damage in transit.

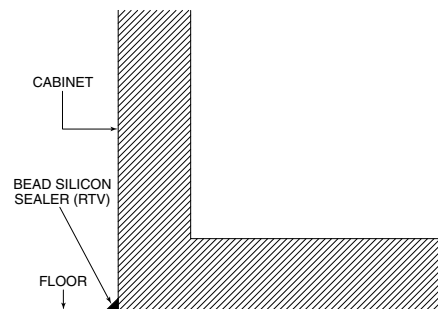
## Installing Casters or Legs (Optional)

Attach four casters to the cabinet bottom; rigid casters at the rear and swivel casters on the front. Use the supplied  $\frac{1}{4}$ "- 20 x  $\frac{3}{4}$ " hex head self-tapping machine screws.

## Placing the Cabinet

Position the cabinet into place using rollers when necessary. **Important:** Proper air flow around the condensing unit is necessary for efficient operation. Never obstruct the air flow in and out of the condensing unit.

For sanitation purposes, it may be necessary to seal the base of the cabinet to the floor. This can be accomplished by laying a bead of silicone sealant between the base of the cabinet and the floor as shown by the figure at below.



## Leveling the Cabinet

When the cabinet is in place, check installation with carpenter's level. When level front to back and left to right, accumulated water will drain out of cabinet evaporator drain.

## Installing Base Plate (Optional)

Attach brackets to cabinet bottom in holes provided. Attach base plate to brackets. (See separate instructions, provided with kit). When returning cabinet to upright position, be careful not to bend brackets.

## WARNING!

*To avoid compressor damage, after returning cabinet to an upright position, let unit stand for 24 hours before plugging it in and running the unit.*

# General Information

## Refrigeration and Temperature Control

The cabinet is equipped with a heavy-duty refrigeration system designed to automatically maintain a storage temperature of approximately 38 degrees F.

## Adjusting the Temperature

The temperature control is inside the cabinet on the left-hand side of the evaporator fan panel assembly. You will need a screwdriver to turn the adjusting screw. Make small adjustments until the desired temperature is achieved.

- **Colder Temperatures:**  
Turn the adjusting screw clockwise (to the right).
- **Warmer Temperatures:**  
Turn the adjusting screw counterclockwise (to the left).
- **Temperature Control "OFF":**  
Turn the adjusting screw completely counterclockwise to the "O" position until a click is noted.

The condenser fan motor turns off and on with the compressor. The evaporator fan motor is on all the time.

### NOTE:

Cabinet Temperatures lower than 34° will not allow for proper defrosting of the evaporator coil. If defrosting is necessary, turn the control knob to the OFF position until coil is defrosted.

## Cleaning the Cabinet

Use a mild detergent and water to clean the inside and outside of the cabinet. Dry thoroughly. Never use a scouring pad or abrasive cleanser.

**NOTE:** An industrial strength, commercial cleaner can be used to clean the outside of painted cabinets.

## Cleaning the Condenser

Use a long handled, stiff brush to clean the dirt from the front surface of the condenser. Keeping the condenser free from dust and dirt will ensure efficient operation.

**CAUTION:** Do not bend the fins while brushing the front of the condenser.

## Condenser

The condenser (located behind the front grille cover) should be inspected every 30 days and cleaned, if necessary.

Failure to keep the condenser clean will cause a loss in condensing unit efficiency.

## Recommended Cleaning Agents

JOB	CLEANING AGENT*	COMMENTS
Routine Cleaning	Soap, ammonia, detergent	Apply with sponge or cloth. Can be used on all finishes.
Fingerprints and smears	Areal 20, Lac-O-Nu, Lumin Wash, O'Cedar Cream Polish	Provides barrier film to minimize fingerprints. Can be used on all finishes.
Stubborn stains and Discolorations	Allchem Concentrated Cleaner, Samae, Twinkle, Zud Restoro, Grade F or FFF Italian Pumice, Whiting or Talc, Liquid Nu Steel, Copper's or Revere Stainless Steel Cleaner, Lumin Cleaner, Sta-Clean, Cameo Copper Cleaner, Allen Polish Highlite, Penny-Brite, Copper Brite	Rub lightly, using dry or damp cloth in the direction of polish lines on the stainless steel.

\* Use of propriety names is intended only to indicate a type of cleaner and does not constitute an endorsement. Omission of any proprietary cleaner does not imply its inadequacy. All products should be used in strict accordance with instructions on the package. NOTE: Do Not Use Steel Wool or Scouring Pads to clean stainless steel.



Perlick is committed to continuous improvement. Therefore, we reserve the right to change specifications without prior notice.

# Replacement Parts — Standard Back Bar Coolers

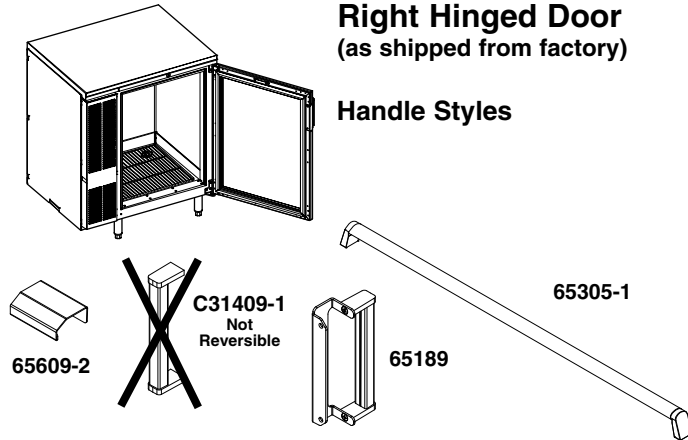
MODEL NOS.	CS60	CS84	CS108
<b>Condensing Units</b>			
Condensing unit 115 volt, 60 hz.	C22647	C22646	C22646
Condensing unit	515301063	515301062	515301062
Compressor	513200314	513200003	513200003
Fan motor assembly	515315009	515315009	515315009
Condenser coil	15352019	15352019	15352019
Terminal board	519100088	519100088	519100088
Overload protector	US-PB10HBX1	US-PB12HBX1	US-PB12HBX1
Relay	US-PB10HBX1	US-PB12HBX1	US-PB12HBX1
Capacitor	US-PB10HBX1	US-PB12HBX1	US-PB12HBX1
<b>Evaporator Assembly</b>			
Self Contained complete	65555-1	65555-2	65555-2
Evaporator coil	C17511-1EP	C17511-2EP	C17511-2EP
Liquid & Suction line	65084	65085	65085
Fan blade	57699	57699	57699
Fan motor	C15239A	C15239A	C15239A
Evaporator fan guard	65557	65557	65557
Temperature control	61283	61283	61283
Bulb clamp	C6634	C6634	C6634
Wire harness, compressor bottom	65560	65560	65560
Wire harness, evaporator	65561	65561	65561
Wire harness, light jumper	65538	65539	65540
Wire harness, mullion heater	65571	65572	65573
Light bulb	63821	63821	63821
Light bulb guard	65525	65525	65525
Light socket	63484	63484	63484
Light switch	65535	65535	65535
Lock	63762	63762	36762
Space, lock	63761-1	63761-1	63761-1
Lock rail	65432-24SS	65432-24SS	65432-24SS
Grille rail	65432-12SS	65432-12SS	65432-12SS
Condenser pan	65565-1	65565-1	65565-1
Condenser end panel	66215-1SS	66215-1SS	66215-1SS
Grille, SS	66210-12SS	66210-12SS	66210-12SS
Condenser housing back	65435-12SS	65435-12SS	65435-12SS
Evaporator, liquid & suction line cover	65576-1L	65576-2L	65576-3L
Evaporator pan	65526-1	65526-2	65526-2
Door sill	65500-1	65500-1	65500-1
Door handle	65305-1	65305-1	65305-1
Door gasket	66237-4	66237-4	66237-4
Cabinet hinge group left	66264L	66264L	66264L
Cabinet hinge group right	66264R	66264R	66264R
Hinge pin	63679-1	63679-1	63679-1
End shelf kit	57928	57928	57928
Center shelf kit	—	57929	57929
Left or right shelf	62307-2	62307-2	62307-2
Center shelf	—	62308-2	62308-2
Pilaster strip	C19271-1	C19271-1	C19271-1
Shelf clip	C15875	C15875	C15875
*Replacement door	RD-NL2	RD-NL2	RD-NL2

\*Contact Perlick Milwaukee for complete door replacement. Cabinet serial no. required.

# Reversing Door Hinge

## Tools Required

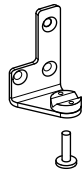
- #3 Phillips Screwdriver.
- 1/16" Allen Wrench.
- Flathead Screwdriver



## Operations to Perform on Cabinet

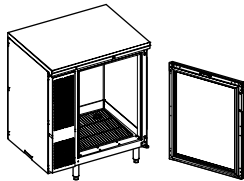
### STEP 1:

Remove bottom hinge pin from assembly.



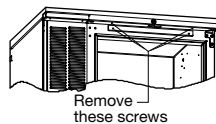
### STEP 2:

Carefully lift and tilt out door assembly from the unit and set aside.



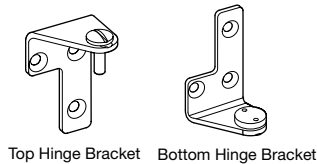
### STEP 3:

Remove lock rail from cabinet, requires removal of four screws.



### STEP 4:

Remove top hinge pin. Remove top and bottom hinge brackets from the unit.



### STEP 5:

Remove hinge bushing from bottom hinge bracket and assemble to top hinge bracket.

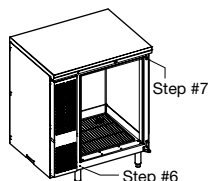


### STEP 6:

Taking care not to scratch the surface, remove hole plugs from the left hinge holes.

### STEP 7:

Insert hole plugs into vacant right hinge holes.



### STEP 8:

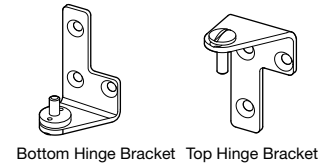
Re-assemble hinge brackets to unit. Bottom right bracket is assembled as the top left bracket. Top right bracket is assembled as the bottom left bracket.

### STEP 9:

Re-insert top hinge pin.

### STEP 10:

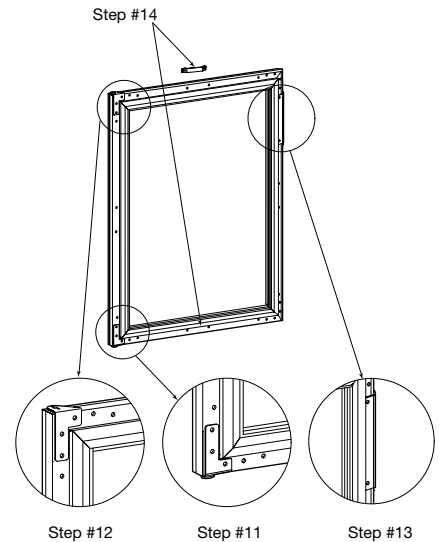
Re-assemble lock rail from STEP #3



## Operations to Perform on Door

### STEP 11:

Remove bottom door hinge bracket from door assembly and remove door hinge bushing from bracket. Re-assemble door hinge bracket to previous position, without bushing.



### STEP 12:

Remove top door hinge bracket from door assembly and assemble door hinge bushing from STEP 11 to bracket. Re-assemble door hinge bracket to previous position with bushing attached.

### STEP 13:

#### Door with full length SS handle:

There is no need to remove door handle. It will be positioned correctly when door is reversed.

#### Door with SS pull tab or handle with wrap-around bracket:

Remove the two screws mounting the handle and reposition to appropriate location on the opposite side of the door.

### STEP 14:

Remove lock retainer and install on opposite end of door.

### STEP 15:

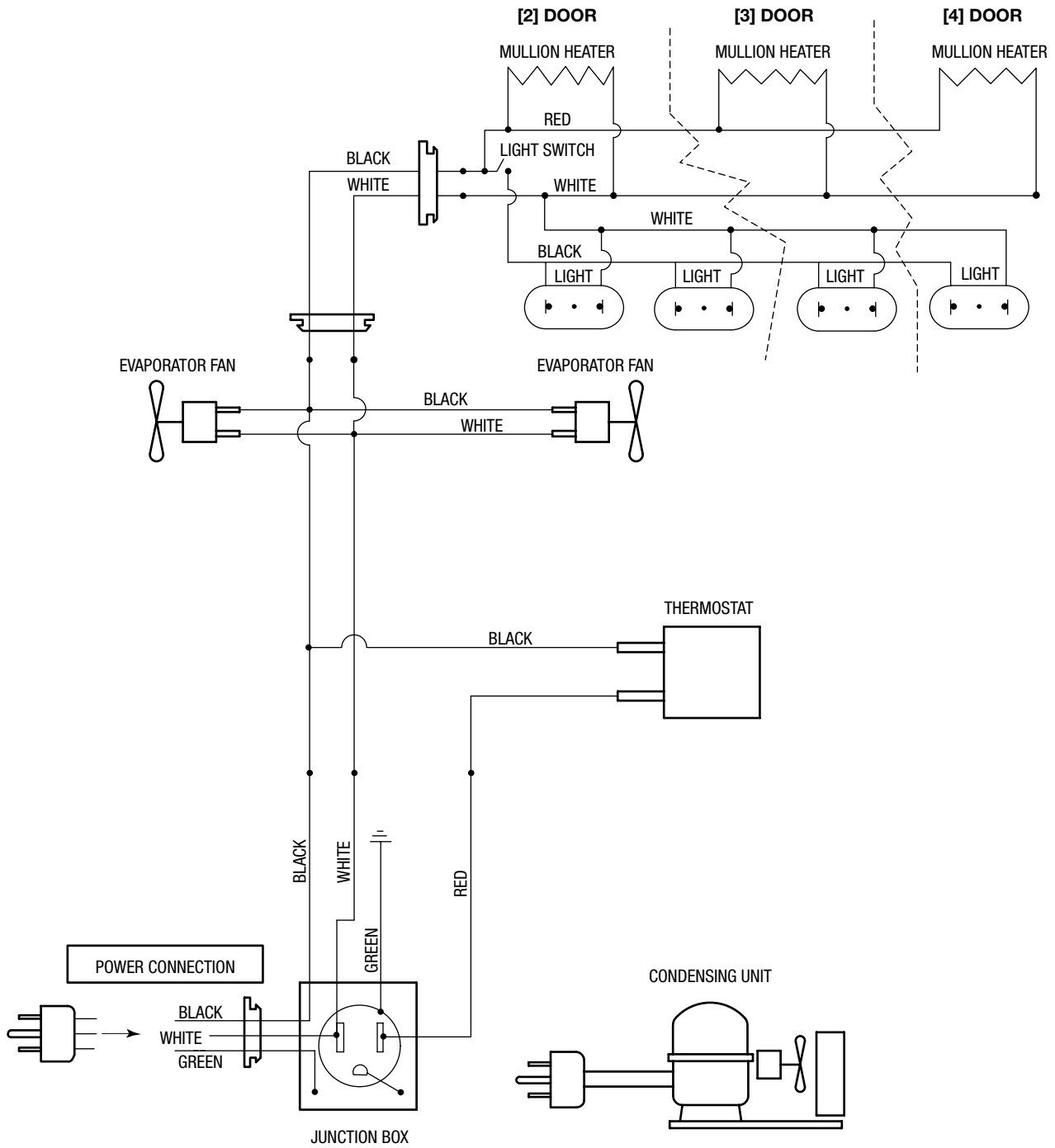
What was the door top is now the door bottom. Carefully lift the door onto the hinge brackets of the cabinet. The two hinge bushings should meet. Reinsert the bottom hinge pin to complete the door switching operation.



Perlick is committed to continuous improvement. Therefore, we reserve the right to change specifications without prior notice.

# Wiring Diagram – Standard Back Bar Coolers

CS Series Self-Contained 2, 3 and 4 Door





8300 West Good Hope Road • Milwaukee, WI 53223 • Phone 414-353-7060 • Fax 414-353-7069  
Toll Free 800-558-5592 • E-Mail: [Perlick@Perlick.com](mailto:Perlick@Perlick.com) • [www.Perlick.com](http://www.Perlick.com)

Perlick is committed to continuous improvement. Therefore, we reserve the right to change specifications without prior notice.

Form No. Z2281  
Rev. 04.23.10