



Item No. _____

INSTALLATION and OPERATION INSTRUCTIONS

Pass-Thru Back Bar Cabinets

INSPECTION

After uncrating, inspect your back bar for concealed damage. If damaged save the crating material, contact the delivering freight company immediately and file a claim for concealed damages. The delivering carrier is responsible for all losses sustained in shipment.

PLACING THE CABINET

Within the limits of good operating practices, Back Bars can be installed in a convenient location for the operator. Self-contained models should always be placed so that air circulation through the condensing unit is not obstructed. Cabinet must be level at time of installation.

ELECTRICAL REQUIREMENTS

This back bar must be connected to a separately fused power source (See Electrical Specification Plate) and grounded in accordance with National and Local Electrical Codes. **Caution:** Do not attempt to operate the equipment on any other voltage or Direct Current (DC) or serious damage will result.

REFRIGERATION

Back Bars are designed for normal temperature applications, 34° F. to 40° F. Evaporators are self-defrosting in this temperature range. Fan Motors should run continuously (See Wiring Diagram).

CONDENSATE DRAIN LINE - Remote Models

The 1/2" condensate drain line furnished with the back bar must be removed and cleaned periodically. Do not attach this line permanently to existing plumbing. Instead, the plumber should provide a "funnel" connection between the condensate drain and cabinet drain making it possible to manually remove the condensate drain for cleaning as necessary.

DOORS

Doors are adjusted at the factory to ensure a perfect seal at time of shipment. Doors are not interchangeable. If removed from the cabinet, replace in same door opening.

CLEANING

Exterior: Clean with soft cloth, mild detergent and warm water.

Interior: Use a solution of one teaspoon baking soda to one quart of warm water.

WARRANTY

Perlick Back Bars are fully guaranteed against defects in both material and workmanship for a period of one year from the date of purchase. Defective parts must be returned to Perlick, freight prepaid. Parts found defective upon inspection will be replaced on a no-charge basis, F.O.B. our factory. Perlick is not responsible for parts damaged by alteration, unauthorized service, accident or abuse.

Model Nos.

P5063E
P5063SC
P5064E
P5064SC

IMPORTANT WARRANTY INFORMATION

A Warranty card is enclosed that must be completed and mailed to the Perlick Corporation to register the warranty. If the card is not returned to Perlick, the warranty period will begin from the date the equipment is shipped from the factory.

These instructions have been prepared to assist you in the installation of your Back Bar Cabinet and to acquaint you with its operation and maintenance.

We dedicate considerable time to ensure that our products provide the highest level of customer satisfaction. If service is required, your dealer can provide you with a list of qualified service agents. For your own protection, never return merchandise for credit without our approval.

We thank you for selecting a Perlick product and assure you of our continuing interest in your satisfaction.



8300 West Good Hope Road
Milwaukee, WI 53223
Phone: 414-353-7060 Fax: 414-353-7069

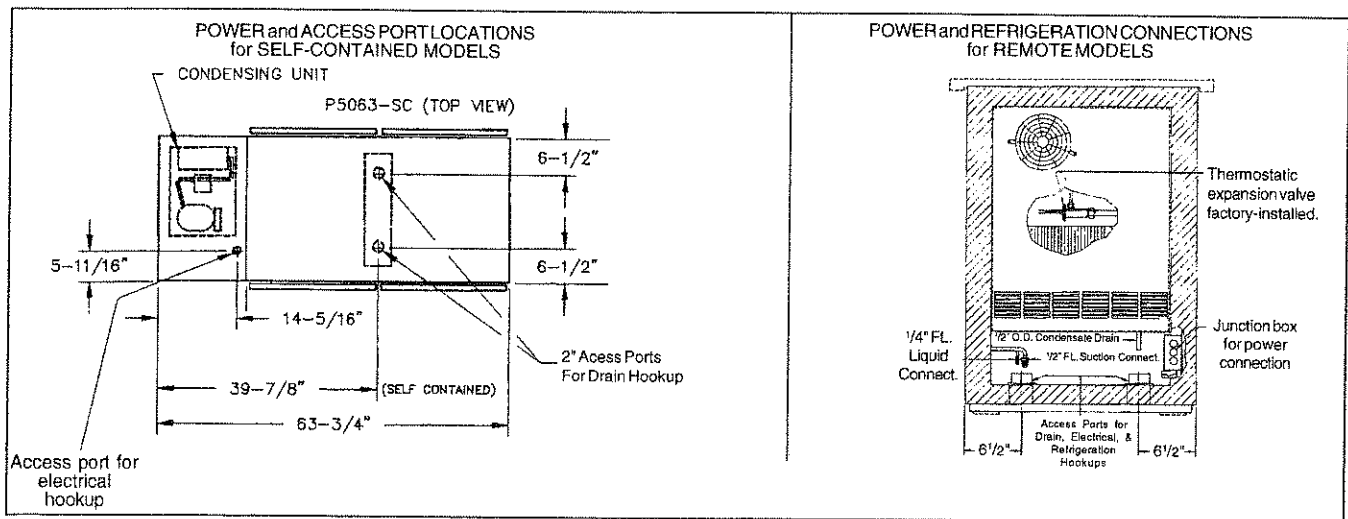
SPECIFICATIONS

PASS-THRU BACK BAR CABINETS

PASS THRU MODEL NOS.	Remote Models		Self-Contained Models		Non-Refrigerated
	P5063	P5064	P5063SC	P5064SC	P8382/P8383
No. of Doors	4	6	4	6	2
Length (mm.)	47 ³ / ₄ " (1213)	71 ⁵ / ₈ " (1819)	63 ³ / ₄ " (1619)	87 ⁵ / ₈ " (2225)	24" (610)
Height (mm.)	37" (940)	37" (940)	37" (940)	37" (940)	32" (813)
Case Capacity ¹	13.5	22.5	13.5	22.5	--
Cond. Unit H.P.	--	--	1/3	1/3	--
Ref. Load BTU/hr. ²	2,000	2,400	--	--	--
Amps	1.5	1.5	8.5	8.5	--
Ship Wt. lbs. (kg.)	390 (176)	550 (249)	525 (238)	680 (308)	150 (68)
Exterior	Front cabinet face, door mullions and ends are 22 gauge, Type 430, stainless steel. Ends: 20 gauge CR steel painted with baked-on grey enamel.				
Compressor Housing (for SC models)	Self-Contained Models Only: Non-refrigerated, Style A: Grille louvres and sides painted black satin enamel. Grille frame front and closet door front laminated. Style B: Grille louvres, frame and closet door are stainless steel. Style C: Grille louvres and grille frame are painted black satin enamel; closet door is stainless steel.				
Interior	Self-Contained and Remote Models: Inner liner is stainless steel. Vinyl-coated, fully adjustable wire shelves. Non-Refrigerated Models: Inner liner is zinc-clad steel.				
Door Finishes	Style A: Finished with customer's choice of high-pressure plastic laminate; Style B: Stainless steel; Style C: Unfinished for field lamination.				
Door Hinging	Standard hinging as illustrated. For special hinging, please include a drawing.				
Door Hardware	Self-closing. Magnetic door gaskets. Door handles black vinyl with chrome ends or all brass plated for a slight additional charge.				
Refrigeration	Self-contained models: R134a, capillary tube-type hermetic condensing unit with service valves. Balanced refrigeration system. Jumbo-sized evaporator coil with permanently lubricated, oversized blowers. Adjustable temperature control. Frost free; self-defrosting. Compressor pulls out for "in-place" service, front ventilated. Remote models: R22 expansion valve included.				
Electrical	115 V, 60 Hz., 1 ph. Can be modified for other voltages; contact Perlick sales office. Junction box provided in condensing unit compartment on self-contained models and under evaporator assembly on remote models.				
Plumbing	Condensate drain connection is 1/2" O.D. on self-contained and remote models. Requires independent floor drain or condensate pan evaporator.				
Insulation	Fiberglass.				
Options and Accessories	Finished countertops (laminated or stainless steel), glass doors, legs, base plates, locks, finished ends divided shelves, cash register stands, draft beer dispensing kits, brass hardware.				

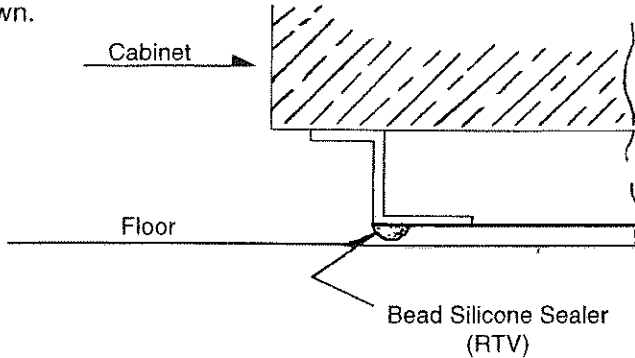
¹Based on 12 oz. export bottles

²Based on 50° temperature difference and 16 hours condensing unit operation.



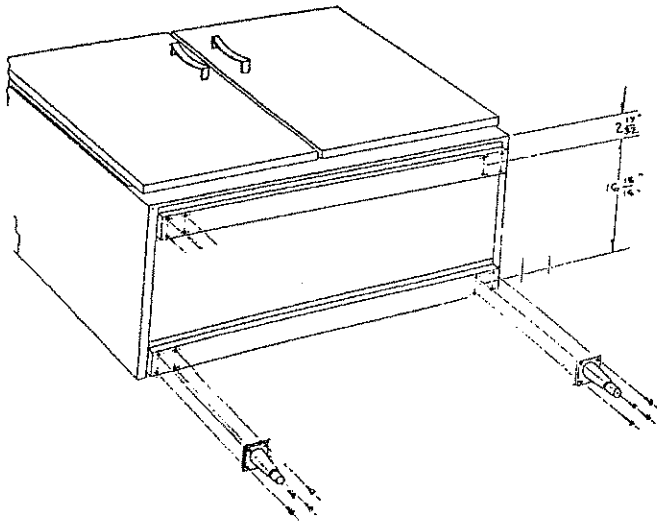
SEALING THE CABINET TO THE FLOOR

For sanitation purposes, it may be necessary to seal the base of the cabinet to the floor. This can be accomplished by laying a bead of silicone sealant along the base of the cabinet as shown.



ADJUSTABLE LEGS

To install, lay cabinet on its back. Required fastener holes have been predrilled at the factory.



NOTE: NSF requires legs to be adjusted to ensure a minimum of six inches of unobstructed clearance beneath the cabinet.

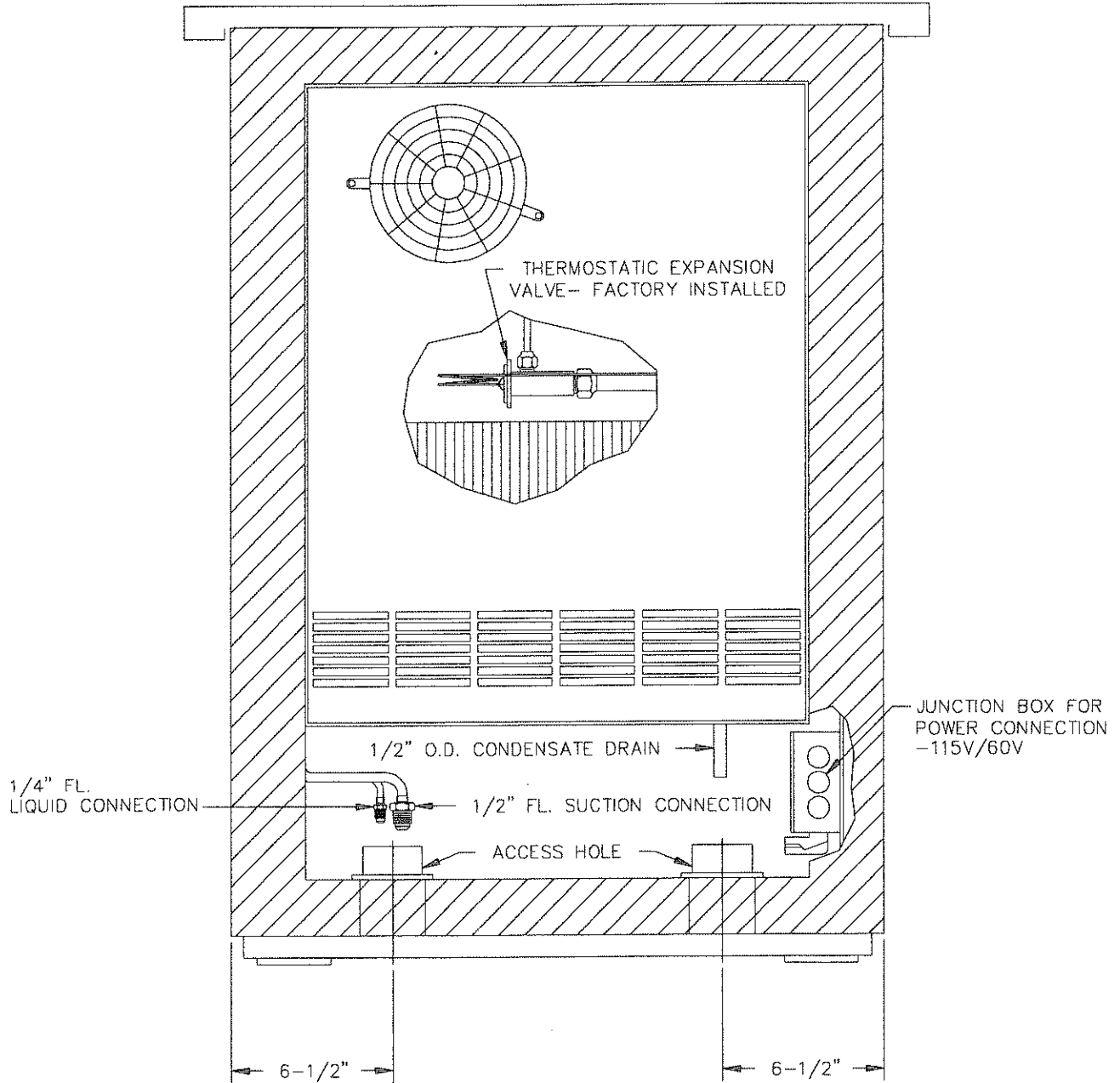
FIELD LAMINATING DOORS

Surfaces to be laminated must be free of dirt and grease. Scratch surface with sandpaper for a better bond.

IMPORTANT: Doors and hardware are not interchangeable. Identify each door's position on the cabinet prior to removing it. Doors must be replaced in their original position. Hardware must also be replaced on the door from which it was taken.

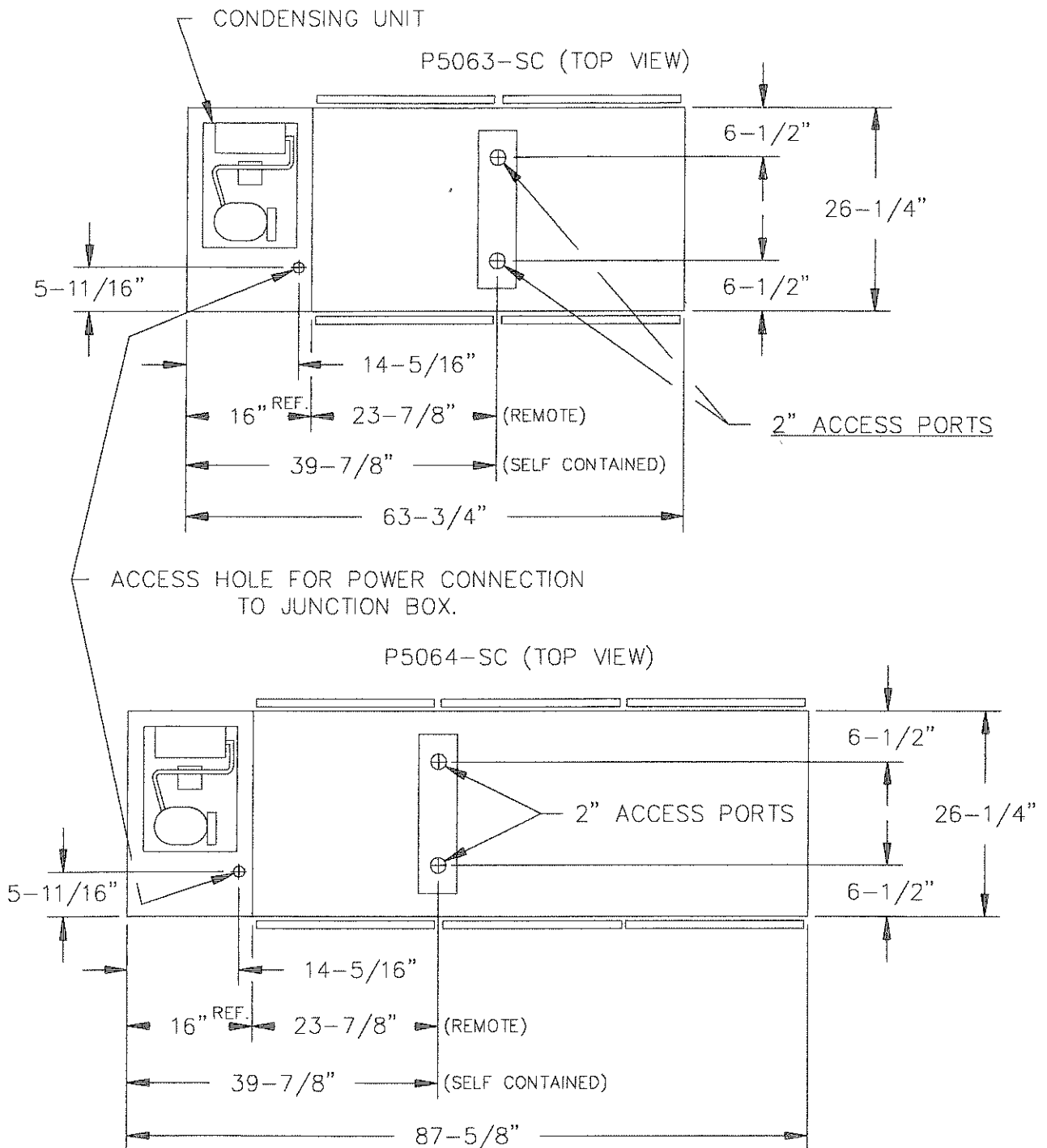
To Laminate:

- Take off bottom hinge bracket to remove door. Door will slip free from the hinge bracket at the top of the door. Be careful not to lose ball bearings on the lower hinge. **Note:** Do not remove the top hinge bracket secured to the cabinet.
- Remove door hinges from door (top and bottom). **Note:** There are $\frac{1}{16}$ " shims between hinge brackets at both top and bottom edge of doors. These shims are temporary spacers and can be discarded when high pressure laminate is applied. Reassemble the $\frac{1}{32}$ " shims located between hinge and door panel on back of door after laminating.
- Remove door handle. Screw heads (2) are accessible by folding door gasket out of the way.
- Scratch face of door with sandpaper for a better bond.
- Apply high pressure laminate to door face and four edges.
- Reassemble. To attach handle, reenter handle holes (on back of door) with $\frac{3}{16}$ " diameter drill. Drill through laminate face.



Power Connection & Access Port Locations

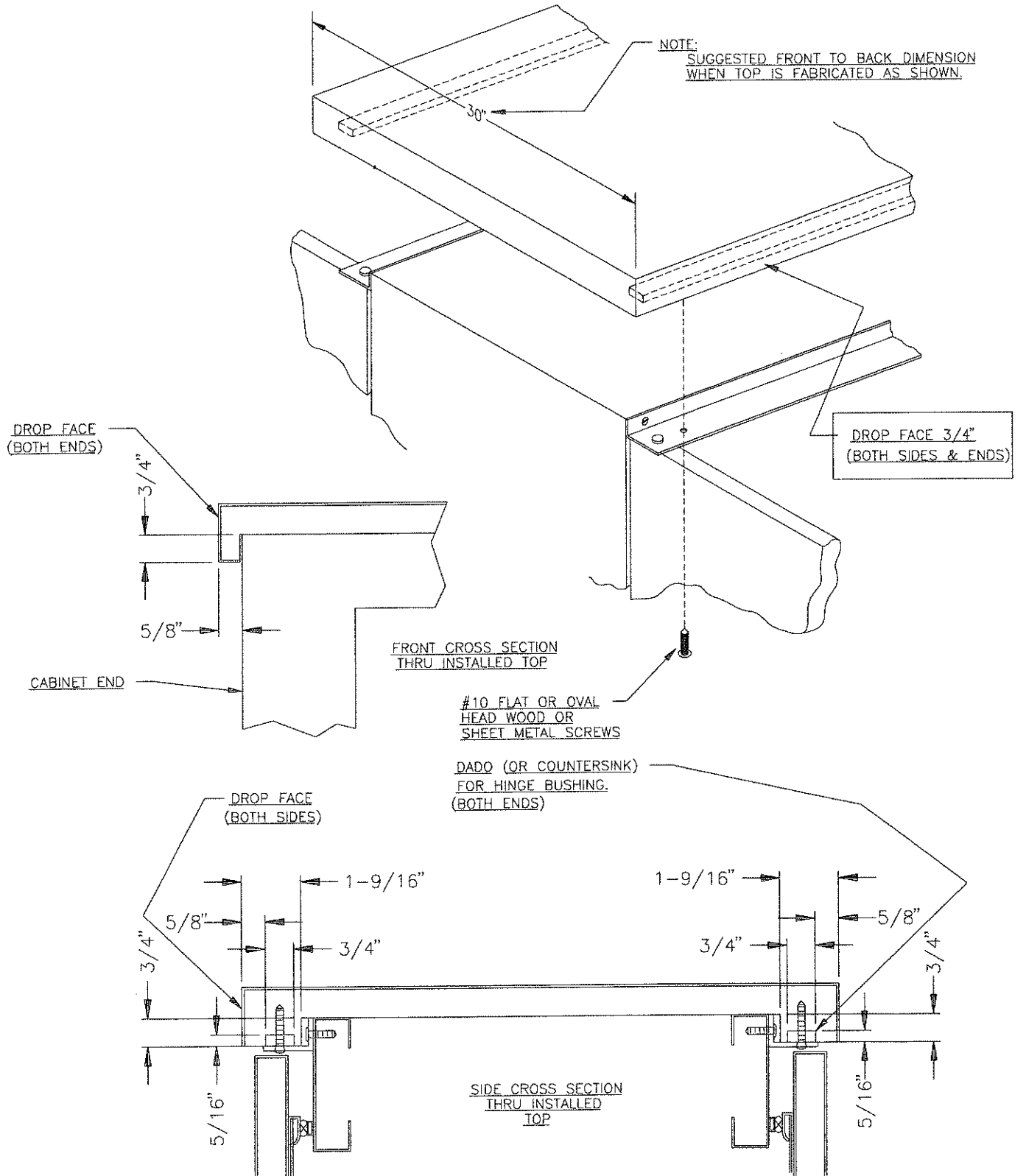
PASS-THRU BACK BAR CABINETS



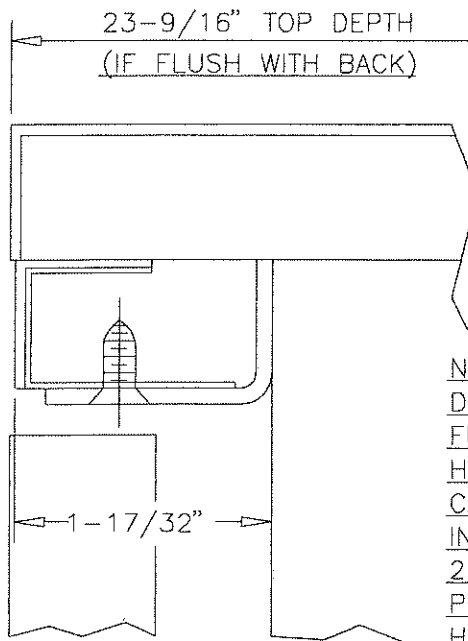
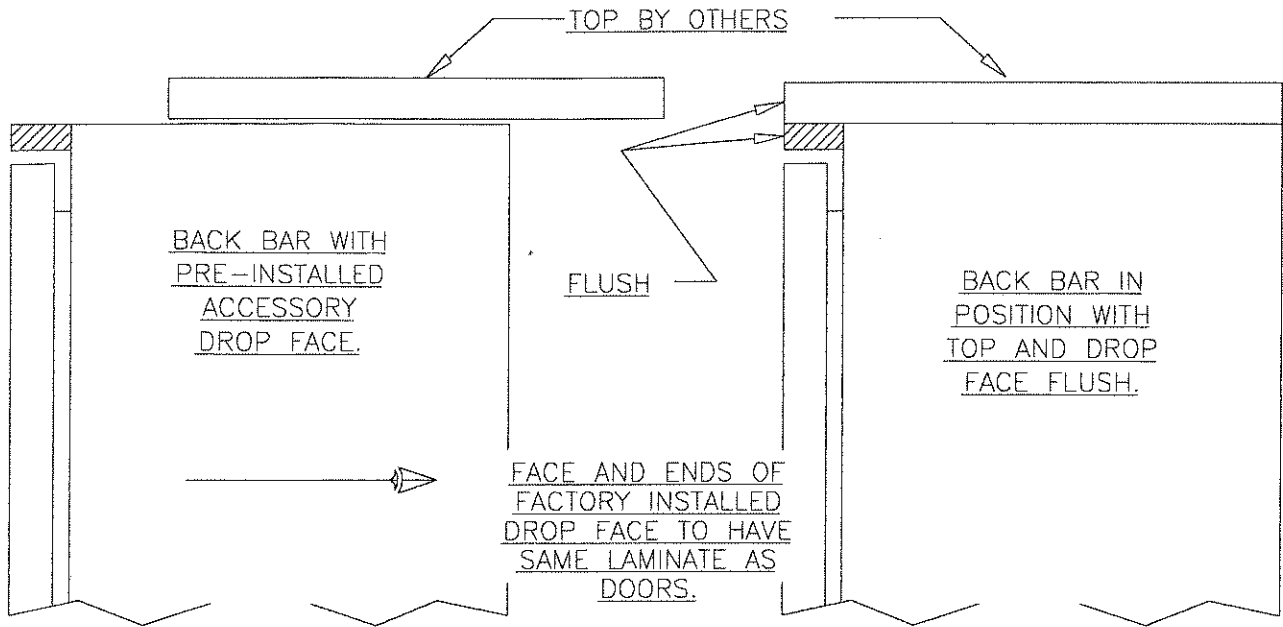
FIELD FABRICATING A BAR TOP

PASS-THRU BACK BAR CABINETS

We recommend using $\frac{3}{4}$ " plywood with $\frac{3}{4}$ " furring strip on front face. Secure to cabinet with screws through predrilled mounting holes in hinge plate.

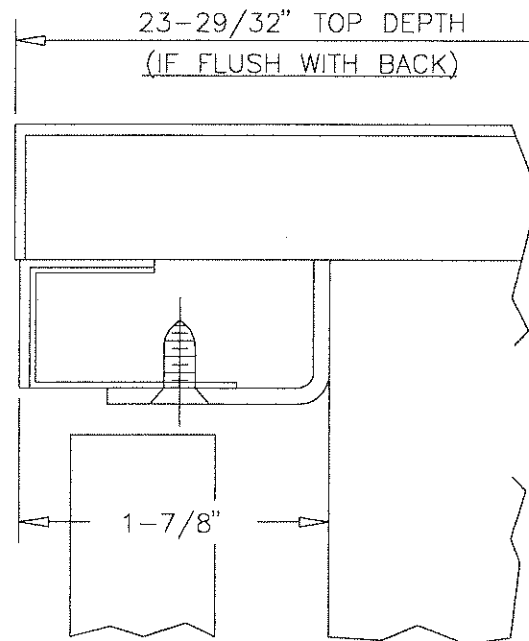


INSTALLING A DROP FACE



POSITION NO. 1

NOTE:
DROP FACE BRACKET
FURNISHED WITH 2
HOLES SO THAT IT
CAN BE LOCATED
IN EITHER OF THE
2 FRONT TO BACK
POSITIONS SHOWN
HERE.



POSITION NO. 2

REPLACEMENT PARTS

PASS-THRU BACK BAR CABINETS

Doors

Part No	Description
C21406L	Left hinged door - Style A - Laminated
C21405LSS	Left hinged door - Style B - Stainless Steel
C21404L	Left hinged door - Style C - Field Laminated
C21406R	Right hinged door - Style A - Laminated
C21405RSS	Right hinged door - Style B - Stainless Steel
C21404R	Right hinged door - Style C - Field Laminated

Door Hinge Parts

C31158	Left hinge kit
C31159	Right hinge kit
C19898	Top hinge for dry storage cabinet
C23019	Bottom hinge for dry storage cabinet

Shelf Parts

59576-2	Shelf
59575-2	Left shelf for three door
C15875	Shelf clip

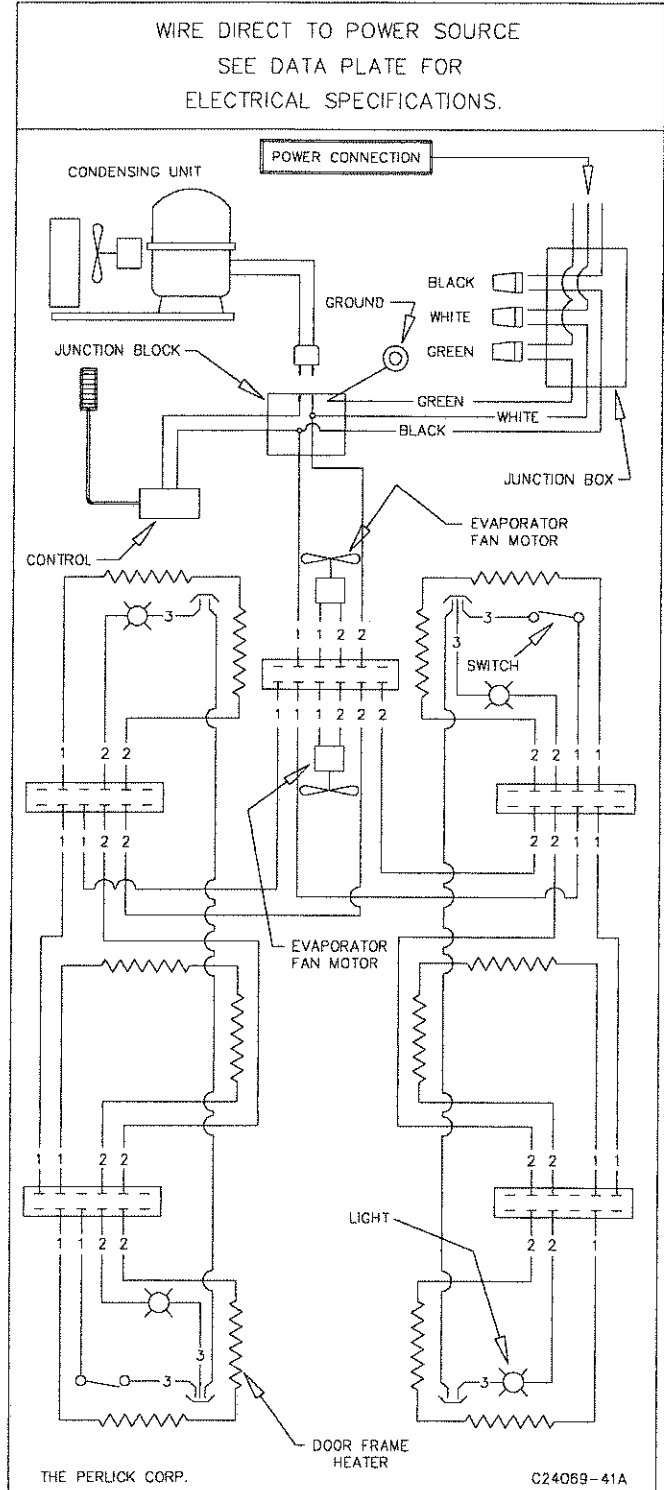
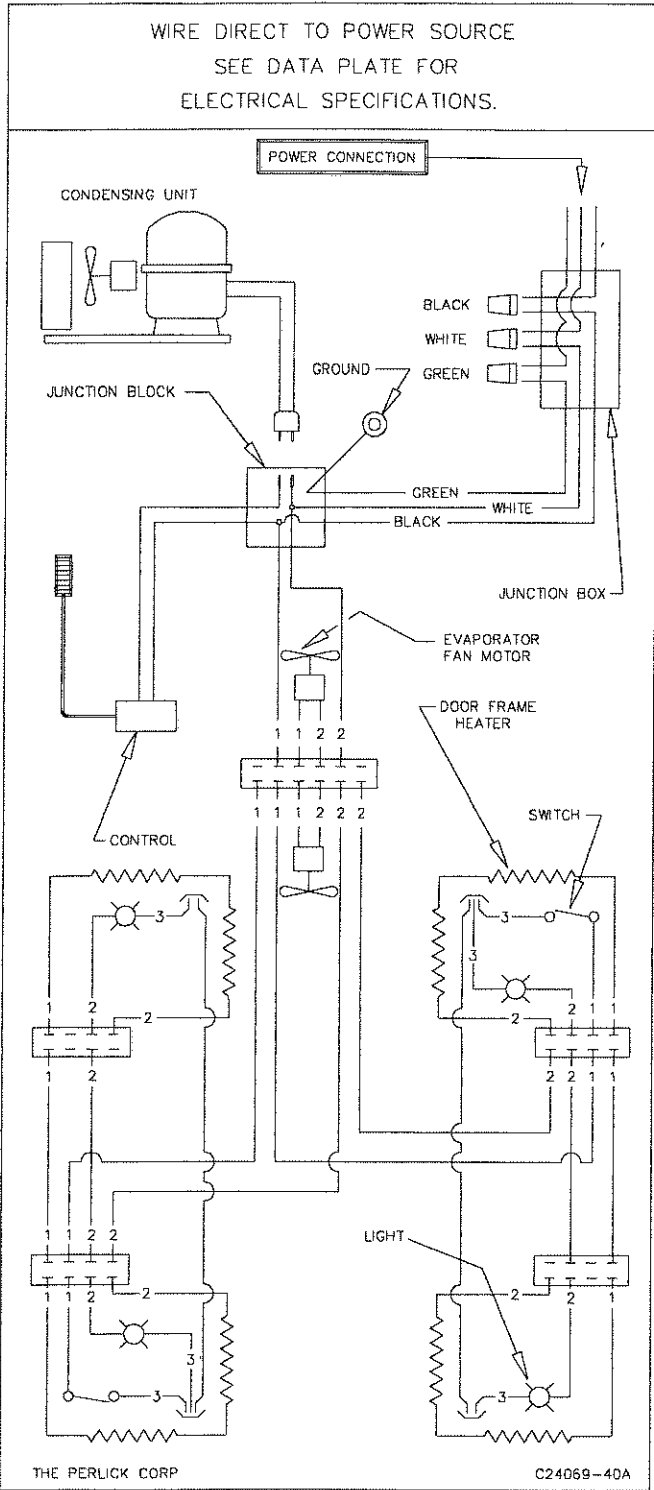
Miscellaneous

C18992-1	Vinyl door gasket
C15612-1	Doorframe heater wire
C18999-1	Vertical breaker strip (latch side)
C19000-1	Top/bottom breaker strip
58459	Right vertical breaker assy. w/switch
59553	Storage door
C15381	Magnetic catch
59561	Grille
58237-1	Light bulb guard
57243-1	Light switch - manual
C23634	Lamp holder

Part No	Description
59587	Fin coil assembly (self-contained)
59586	Fin coil assembly (remote)
C27962	Control
C15239A	Evaporator Fan motor
C14649	Fan blade - 5 1/2"
58275	Fanguard
59640	Fan panel - remote
59580	Fan panel (control side)
59577	Fan panel (self-contained)
58278	Condensate pan
C22605	1/3 h.p. condensing unit
57513	Fan motor
57498	Compressor
C3150-3	Fan blade

P5063-SC
2 DOOR PASS THRU BACK BAR

P5064-SC
3 DOOR PASS THRU BACK BAR



P5063
2 DOOR REMOTE PASS THRU BACK BAR

P5064
3 DOOR REMOTE PASS THRU BACK BAR

