



# Installation & Operation Manual

Slant Top Bottle Cooler  
ST Series



ST72 shown





ST72 Series shown

JOB	
AREA	
ITEM NO.	
MODEL NO.	

ST48 SERIES
ST48LT SERIES
ST72 SERIES
ST72LT SERIES



## TABLE OF CONTENTS

Installing

- Uncrating and Inspection..... 2
- Plumbing ..... 3
- Electrical..... 3
- Adjusting Partitions..... 3
- Installing Casters and Legs ..... 3
- Placing the Cabinet ..... 3
- Sealing to the Floor ..... 4

Temperature Control..... 4

Cleaning the Cabinet/Doors ..... 4

Cleaning the Condenser..... 4

Stainless Steel Care..... 4

Wiring Diagrams ..... 5/6

Replacement Parts ..... 7/8

## GENERAL INFORMATION

### Introduction

This manual has been prepared to assist you in the installation of your Bottle Cooler and to acquaint you with its operation and maintenance.

We dedicate considerable time to ensure that our products provide the highest level of customer satisfaction. If service is required, call Perlick at 1-800-777-7267 or your dealer who can provide you with a list of qualified service agents. For your own protection, never return merchandise for credit without our approval.

We thank you for selecting a Perlick product and assure you of our continuing interest in your satisfaction.

### Warranty

To register your product, visit our web site at [www.perlick.com](http://www.perlick.com). Click on "Commercial", then "Service". Click on the link "Warranty Registration Form". You must complete and submit this form or the installation date will revert back to the ship date.

Please record the purchase date and the dealer's name, address and telephone number below.

Model Number: \_\_\_\_\_

Serial Number: \_\_\_\_\_

Purchase Date: \_\_\_\_\_

Dealer Name & Address \_\_\_\_\_

\_\_\_\_\_

\_\_\_\_\_

Phone Number \_\_\_\_\_

Perlick is committed to continuous improvement. Therefore, we reserve the right to change specifications without prior notice.

## PREPARING THE CABINET - FLAT TOP BOTTLE COOLERS

### Uncrating and Inspection

Remove all crating material before operating. Carefully inspect cabinet for hidden damage. If damage is discovered, file your claim immediately with the transport company. Perlick is not responsible for damage in transit.

### Plumbing

No plumbing connections are required. Condensate from the cooling coil automatically evaporated through a condensate pan located in the condensing unit section.

### Electrical

The cabinet must be connected to a separately fused power source (see Electrical Specification Plate) and grounded in accordance with National and Local electrical codes.

**⚠ CAUTION** Do not attempt to operate the equipment on any other power source than that listed on the Electrical Specification Plate.

### Adjustable Partitions & Shelving

Perlick Bottle Coolers may be provided with adjustable partitions and shelving which will accommodate various bottle sizes.

- Remove bottles and cans from their cases before placing in cooler to ensure proper air flow.

### Installing Casters or Legs (optional)

Attach casters or legs to the cabinet bottom in holes provided. Use the supplied 1/4" - 20 hex head self-tapping machine screws. If unit is tipped on its back for an extended period of time, wait 24 hours after unit is uprighted to plug the unit in. Please refer to the instruction sheet included with the leg and caster kit for additional installation details.

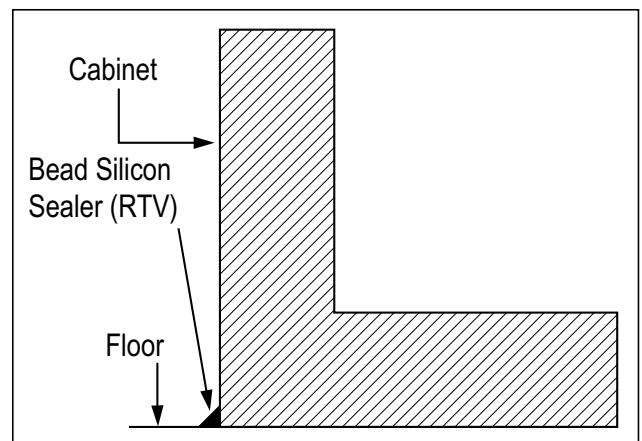
### Placing the Cabinet

To assure maximum performance, fresh air must be allowed to circulate through the machinery compartment. It is important to allow at least two inches of clearance at the back or left end of the cabinet. Do not place anything in front of the cabinet that would obstruct air flow at these grilles. Do not place the unit in an unventilated small room.

**⚠ CAUTION** Removing the factory installed back clearance spacers without providing proper left side grill clearance for compressor air flow will void the warranty.

Cabinet should be leveled.

For sanitation purposes, it may be necessary to seal the base of the cabinet to the floor. This can be accomplished by laying a bead of silicone sealant along the base of the cabinet as shown by the figure below (figure 1).



**Figure 1. Sealing Cabinet to Floor**

## HOW TO OPERATE - SLANT TOP BOTTLE COOLERS

### Temperature Control

An adjustable temperature control is located inside the Slant Top Bottle Cooler on the evaporator fan panel assembly. It is factory set at approximately 38°F for standard refrigeration and approximately 30°F for low temperature models. Make adjustments as detailed below to attain the desired temperature.

NOTE: On models ST48 and ST72, temperature settings 34°F will not allow adequate time to defrost the evaporator coil during the off cycle.

NOTE: On models ST48LT and ST72LT, temperature settings below 30°F may freeze and damage some products.

- **Colder Temperatures:** Turn the adjusting screw clockwise (to the right).
- **Warmer Temperatures:** Turn the adjusting screw counterclockwise (to the left).
- **Temperature Control "OFF":** Turn the adjusting screw completely counterclockwise to the "O" position until a "click" is noted.

The condenser fan motor turns off and on with compressor. The evaporator fan motor runs continuously.

### Cleaning the Condenser

- The condenser (located behind the front grille) should be inspected every 30 days, and cleaned, if necessary. Failure to keep the condenser clean will cause a loss in condensing unit efficiency, or compressor failure.

### Avoiding Stainless Steel Corrosion

Corrosion can be prevented by following product cautions, cleaning instructions and avoiding use of certain chemicals or objects which will cause stainless steel corrosion.

### STAINLESS STEEL ENEMY

- Steel wool or steel scouring pads
- Cherry/Orange/Olive juice
- Chlorine Bleach
- Sharp Objects

### Cleaning the Doors

- Doors should be periodically removed from the cabinet and inspected for a buildup of foreign materials, such as syrups, beer, etc. Buildups on the underside of the doors, along with the door tracks on which they ride, will cause them to bind, and therefore, not function as designed. If dirty, these surfaces should be cleaned with a mild detergent and water and then coated with NSF approved silicone lubricating material. Aerosol silicone sprays can be obtained locally at most hardware or automotive stores.

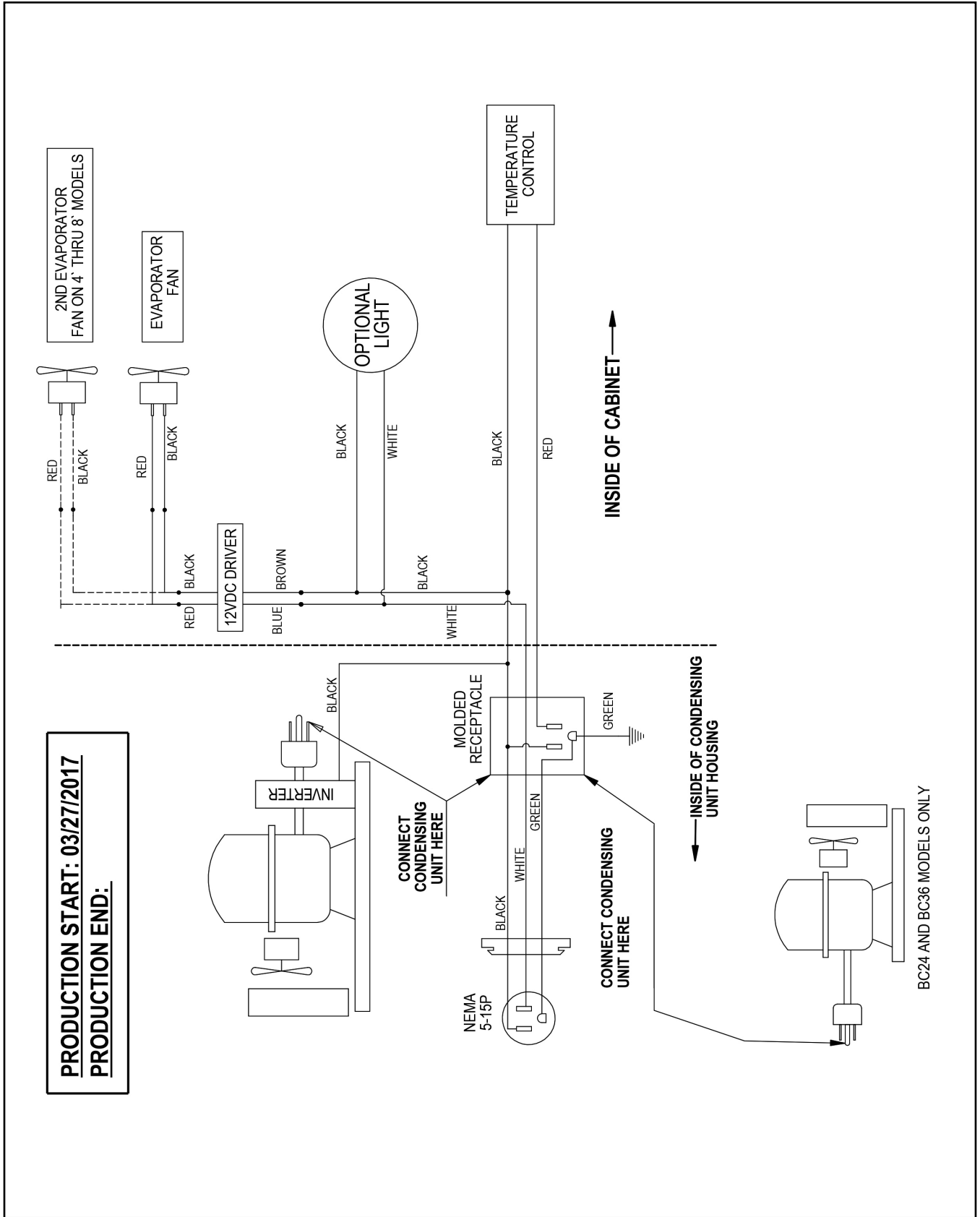
#### To remove doors:

- Grasp the sides of each door and gently lift up to free them from the door track. Use the reverse procedure to reinstall the doors.

### Cleaning the Cabinets

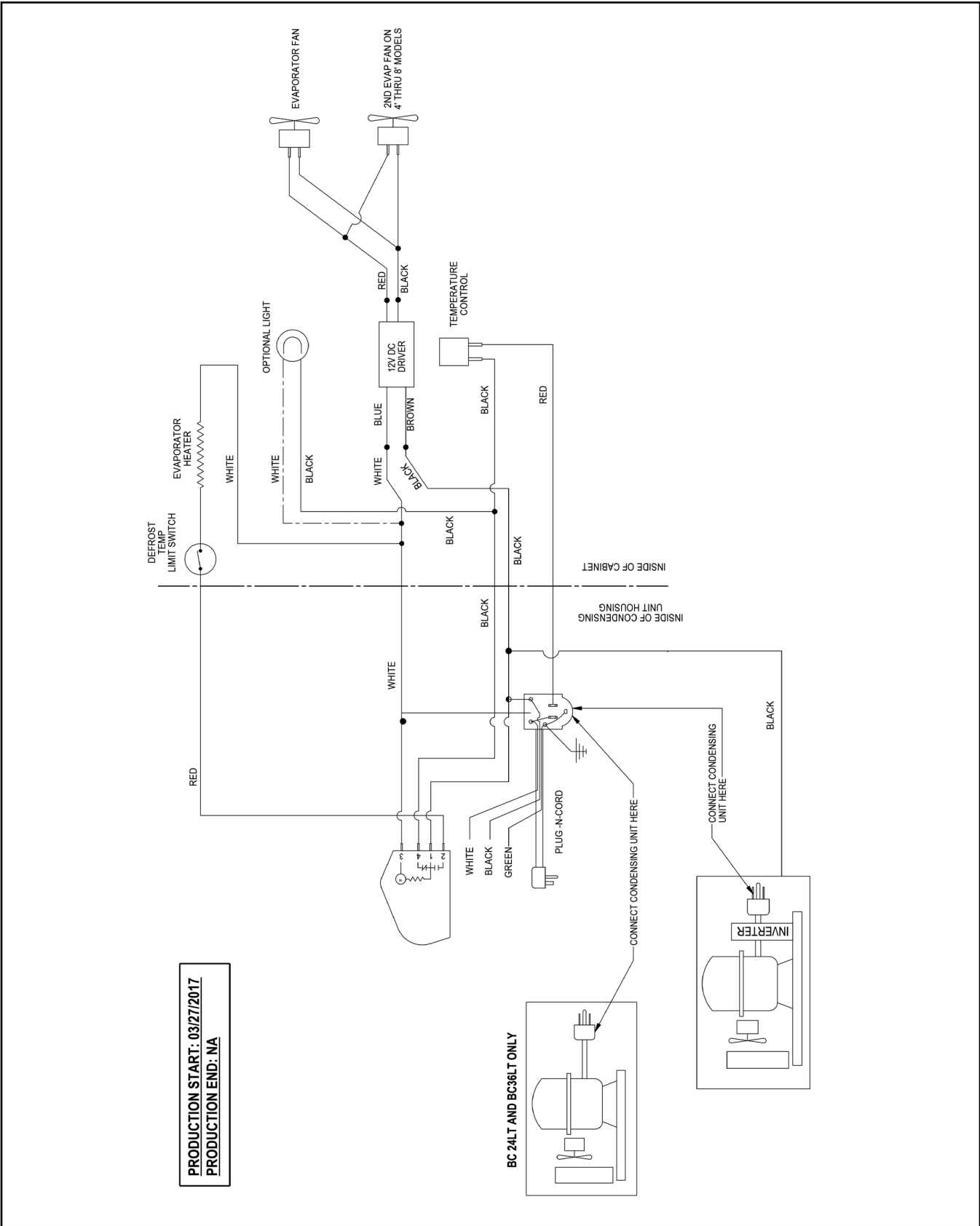
- Use a damp cloth with a mild detergent and water to clean the inside and outside of the cabinet. Dry thoroughly. Do not allow cleaning agents or large amounts of water to go down the drain. Use an acceptable stainless steel polish to clean all stainless steel surfaces. Never use steel wool or scouring pads to clean stainless steel.

**WIRING DIAGRAM - SLANT TOP BOTTLE COOLERS ST48 AND ST72**



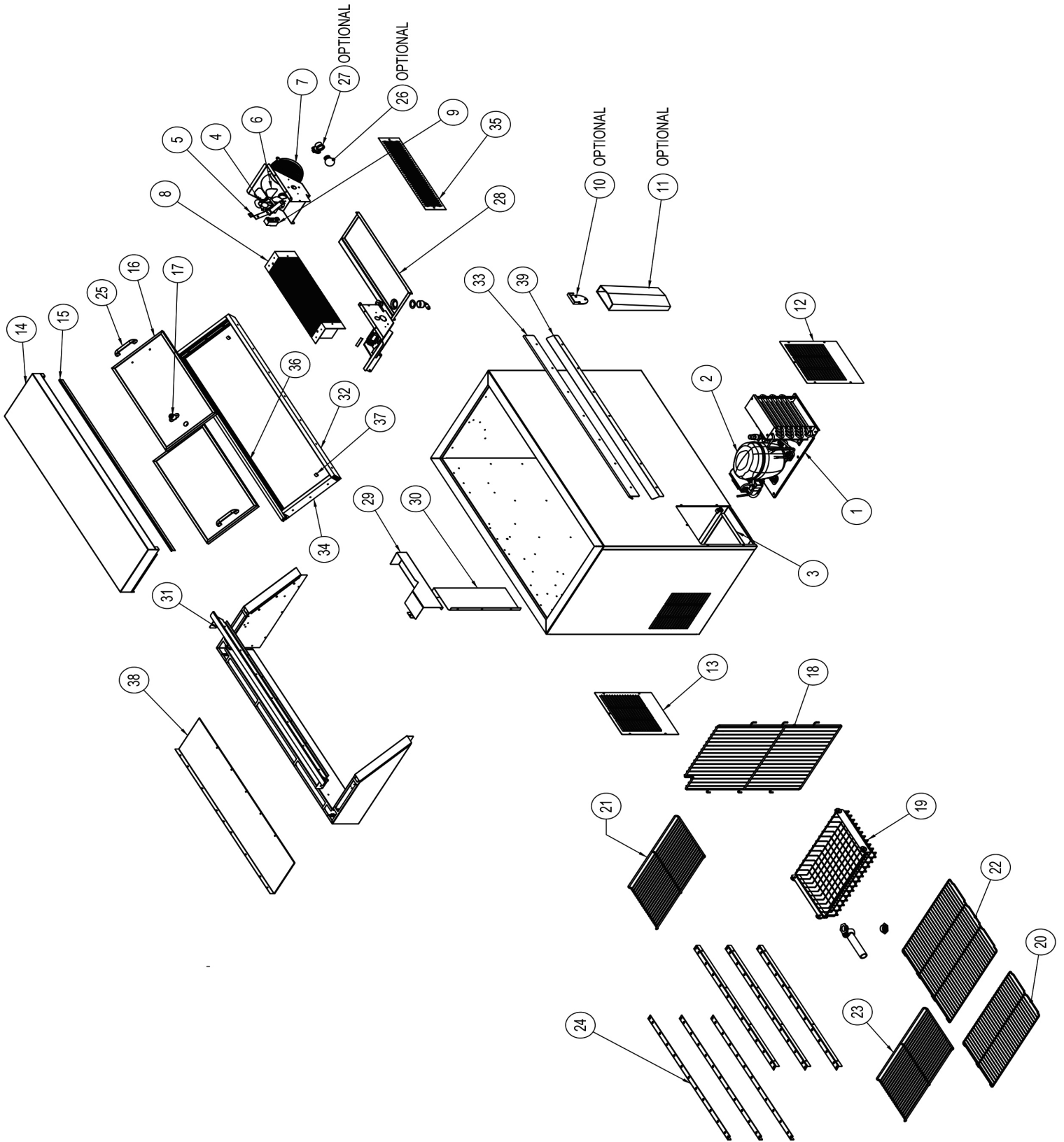
Perlick is committed to continuous improvement. Therefore, we reserve the right to change specifications without prior notice.

# WIRING DIAGRAM - LOW-TEMP BOTTLE COOLERS



Perlick is committed to continuous improvement. Therefore, we reserve the right to change specifications without prior notice.

**REPLACEMENT PARTS - FLAT TOP BOTTLE COOLERS**



Perlick is committed to continuous improvement. Therefore, we reserve the right to change specifications without prior notice.

## REPLACEMENT PARTS - SLANT TOP BOTTLE COOLERS

MODEL NOS.		ST48	ST72	ST48LT	ST72LT
Item	Description	Part Numbers			
1	Complete condensing unit	C22647	C22646	C22647	C22646
2	Compressor	Call Factory	Call Factory	Call Factory	Call Factory
	Overload/Relay/Capacitor Kit	US-PB10HBX1	US-PB12HBX1	US-PB10HBX1	US-PB12HBX1
3	Condensate pan	64626-1	64626-1	64626-1	64626-1
4	Evaporator fan motor(s)	C15239A	C15239A	C15239A	C15239A
5	Evaporator fan motor bracket	60988-1	60988-1	60988-1	60988-1
6	Evaporator fan motor blade	57699	57699	57699	57699
7	Evaporator fan guard	65667	65667	65557	65557
8	Evaporator fin coil	C17511-1EP	C17511-2EP	C17511-1EP	C17511-2EP
9	Temperature control	61283	61283	65634	65634
10	Bottle opener (optional)	C6713-1	C6713-1	C6713-1	C6713-1
11	Bottle cap receiver (optional)	C17332SS	C17332SS	C17332SS	C17332SS
12	Front grille	65662-1A	65662-1A	65662-1A	65662-1A
13	Rear grille	65662-3	65662-3	65662-3	65662-3
14	Top assembly	RT-SL2	RT-SL2	RT-SL2	RT-SL2
15	Top wiper gasket	63671-48	63671-72	63671-48	63671-72
16	Door assembly	RD-SL2	RD-SL2	RD-SL2	RD-SL2
17	Lock	67226	67226	67226	67226
18	Vertical partition	66927-2	66927-2	66927-2	66927-2
19	Roller basket	66442-1	66442-1	66442-1	66442-1
20	Bottom floor rack (narrow)	64815-1	64815-1	64815-1	64815-1
21	Wide shelf	64811-1	64811-1	64811-1	64811-1
22	Bottom floor rack (wide)	64814-1	64814-1	64814-1	64814-1
23	Narrow shelf	64809-1	64809-1	64809-1	64809-1
24	Shelf bracket	65653-48	65653-72	65653-48	65653-72
25	Door handle	63931	63931	63931	63931
26	Light Bulb (optional)	C15046	C15046	C15046	C15046
27	Light socket (optional)	63484	63484	63484	63484
28	Evaporator drain pan	65526-1SL	65526-2SL	65526-1SL	65526-2SL
29	Cover, horizontal	65656-48	65656-72	65656-48	65656-72
30	Cover, vertical	65659-3	65659-3	65659-3	65659-3
31	Track mounting bracket, upper	66870-48	66870-72	66870-48	66870-72
32	Door track, lower	67153-48	67153-72	67153-48	67153-72
33	Track mounting bracket, lower	66871-48	66871-72	66871-48	66871-72
34	Door track, sides	67153-1	67153-1	67153-1	67153-1
35	Evaporator fin guard	69056-1	69056-2	69056-1	69056-2
36	Door track, upper	67154-48	67154-72	67154-48	67154-72
37	Door bumper	67236	67236	67236	67236
38	Evaporator baffle	66488-1	66488-2	66488-1	66488-2
39	Cover, bottom track bracket	66872-48	66872-72	66872-48	66872-72

Perlick is committed to continuous improvement. Therefore, we reserve the right to change specifications without prior notice.





8300 West Good Hope Road • Milwaukee, WI 53223 •  
Toll Free 800.558.5592 • Fax 414.353.7069 • [www.perlick.com](http://www.perlick.com)