

# SERVICE SECTION

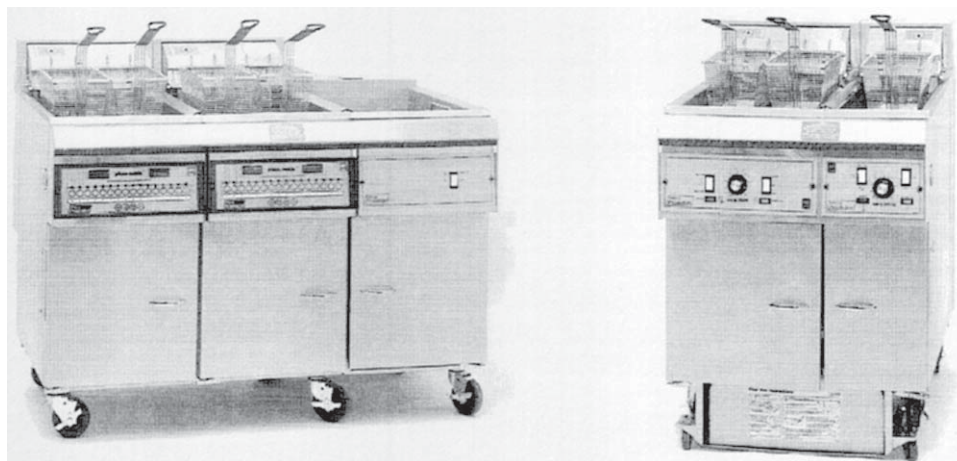


There's Always Something Cooking!

Service, Parts, and Schematics  
For Electric Fryers With Options

Including Options, Built-In and UFM (Spacefighter)  
Filter Systems

Covering Models  
E7, E7B, E12, E14, E14B, E14X, E18, & E18B



**Pitco Frialator, Inc.,** P.O. Box 501, Concord, NH 03302-0501 • 509 Route 3A, Bow, NH 03304  
(800) 258-3708 • (603) 225-6684 • FAX (603) 225-8497

A **BLODGETT** Company



# TO THE PURCHASER, OWNER AND STORE MANAGER



Please review these warnings prior to posting them in a prominent location for reference.

## WARNING

DO NOT store or use gasoline or other flammable vapors and liquids in the vicinity of this or any other appliance.

## WARNING

Improper installation, alteration, service or maintenance can cause property damage, injury or death. Read the installation, operating and maintenance instructions thoroughly before installing or servicing this appliance.

## WARNING

Installation, maintenance and repairs should be performed by a Pitco Authorized Service and Parts (ASAP) company technician or other qualified personnel. Installation, maintenance or repairs by unauthorized and unqualified personnel will void the warranty.

## WARNING

Installation and all connections must be made according to national and local regulations and codes in force.

## WARNING

A country approved all pole circuit breaker with a minimum open contact gap of 3mm must be used for proper installation. (CE countries)

## WARNING

During the warranty period if a customer elects to use a non-original part or modifies an original part purchased from Pitco and/or its Authorized Service and Parts (ASAP) companies, this warranty will be void. In addition, Pitco and its affiliates will not be liable for any claims, damages or expenses incurred by the customer which arises directly or indirectly, in whole or in part, due to the installation of any modified part and/or received from an unauthorized service center.

## WARNING

This appliance, when installed, must be electrically grounded in accordance with local codes, or in the absence of local codes, with the National Electrical Code, ANSI/NFPA 70, or the Canadian Electrical Code, CSA C22.2, as applicable.

## WARNING

DO NOT alter or remove structural material on the appliance to facilitate storage or for any other reason.

## WARNING

This appliance is intended for professional use only and should be operated by fully trained and qualified personnel.

## WARNING

DO NOT use the electrical cord as a leash to move the appliance. Series injury and appliance damage can occur.

## WARNING

If the supplied power cord or receptacle is damaged, it must be replaced by a Pitco Authorized Service and Parts (ASAP) company technician, or a similarly qualified person in order to avoid a hazard.

## WARNING

The power supply must be disconnected before servicing, maintaining or cleaning this appliance.

## WARNING

The appliance is NOT jet stream approved. DO NOT clean the appliance with a water jet.

## WARNING

DO NOT attempt to move this appliance or transfer hot liquids from one container to another when the unit is at operating temperature or filled with hot liquids. Serious personal injury could result if skin comes in contact with the hot surfaces or liquids.

## WARNING

DO NOT sit or stand on this appliance. The appliance's top panel, filter pan, filter carriage, pan cover is not a step. Serious injury could result from slipping, falling or contact with hot liquids.

## WARNING

NEVER use the appliance as a step for cleaning or accessing the ventilation hood. Serious injury could result from slips, trips or from contacting hot liquids.

## WARNING

The filter pan should be dry and free of water droplets prior to use. Serious injury could result from hot steam vapors when hot oil/shortening mixes with water.

## WARNING

DO NOT overfill filter pan with hot oil/shortening. Do not leave appliance unattended while draining or refilling with oil/shortening. Over filling the appliance can cause serious injuries and damage the appliance.

## WARNING

The contents of the crumb catch and/or filter pan of any filter system must be emptied into a fireproof container at the end of each day. Some food particles can spontaneously combust if left soaking in certain types of oil or shortening.

## WARNING

Completely shut the appliance down when the oil/shortening is being drained from the appliance. This will prevent the appliance from heating up during the draining and filling process. Serious injury and appliance damage can occur.

## WARNING

This appliance is intended for indoor use only.

## WARNING

DO NOT operate appliance unless all panels and access covers are attached correctly.

## WARNING

It is recommended that this appliance be inspected by a qualified service technician for proper performance and operation on a yearly basis

## WARNING

This appliance is designed to operate on a specific voltage. This information can be found on the data plate located on the rear of the appliance

# Table of Contents (Service)

| Section                           | Title   | Page       |
|-----------------------------------|---|------------|
| Table of Contents (Service) ..... |   | i-ii       |
| List of Figures .....             |   | ii         |
| <b>Chapter 4: Service .....</b>   |   | <b>4-1</b> |
| 4.1                               | REPLACEMENT PROCEDURES .....                                | 4-1        |
| 4.1.1                             | Heating Element Removal and Replacement .....               | 4-1        |
| 4.1.2                             | Backup Thermostat Replacement - Computer Models Only .....  | 4-2        |
| 4.1.3                             | Calibrating the Thermostat - Computer Models Only .....     | 4-3        |
| 4.2                               | TESTING CONTACTORS (RELAYS) .....                           | 4-3        |
| 4.3                               | TESTING HEATING ELEMENTS .....                              | 4-4        |
| 4.4                               | TESTING THE TEMPERATURE SETTING POTENTIOMETERS .....        | 4-4        |
| 4.5                               | TESTING THE TEMPERATURE CONTROL MODULES .....               | 4-4        |
| 4.6                               | TESTING THE TEMPERATURE PROBE .....                         | 4-5        |
| 4.7                               | TESTING THE HEATING ELEMENT INTERLOCK .....                 | 4-5        |
| 4.8                               | TROUBLESHOOTING FRYERS WITHOUT COMPUTERS .....              | 4-7        |
| 4.9                               | TROUBLESHOOTING FRYERS WITH COMPUTERS .....                 | 4-14       |
| 4.10                              | TROUBLESHOOTING BASKET LIFT PROBLEMS .....                  | 4-16       |
| 4.11                              | TROUBLESHOOTING BUILT-IN FILTER UNITS .....                 | 4-18       |
| 4.12                              | TROUBLESHOOTING UFM FILTER UNITS .....                      | 4-21       |
| <b>Chapter 5: Parts .....</b>     |   | <b>5-1</b> |
| <b>Fig. No.</b>                   |   |            |
| 5-1                               | Outside View .....  | 5-2        |
| 5-2                               | Entrance Box .....  | 5-3        |
| 5-3                               | Inside Fryer Tank Components .....                          | 5-4        |
| 5-4                               | Frame-Cabinet / Electrical Assemblies With Components ..... | 5-7        |
| 5-5                               | UFM Filter, Frame/Electrical Assembly .....                 | 5-9        |
| 5-6                               | UFM Pilter, Pick-Up/Pan Assembly .....                      | 5-11       |
| 5-7                               | UFM Filter, Motor / Return Assembly .....                   | 5-13       |
| 5-8                               | Built-In Filter Pan With Components .....                   | 5-15       |
| 5-9                               | Filter Piping With Components .....                         | 5-17       |
| 5-10                              | Built-In Filter With Accessories .....                      | 5-19       |
|                                   | ALPHABETICAL PART LIST .....                                | 5-20       |
|                                   | NUMERICAL PART LIST .....                                   | 5-24       |

## Table of Contents (Service) Cont.

| Section                            | Title | Page       |
|------------------------------------|-------|------------|
| <b>Chapter 6: Schematics</b> ..... |       | <b>6-1</b> |

### List of Tables and Figures

| Table No. | Title   | Page |
|-----------|---|------|
| 5-1       | Frame-Cabinet / Electrical Assemblies With Components ..... | 5-6  |
| 5-2       | UFM Filter, Frame/Electrical Assembly .....                 | 5-8  |
| 5-3       | UFM Pilter, Pick-Up/Pan Assembly .....                      | 5-10 |
| 5-4       | UFM Filter, Motor / Return Assembly .....                   | 5-12 |
| 5-5       | Built-In Filter Pan With Components.....                    | 5-14 |
| 5-6       | Built-In Filter Piping With Components .....                | 5-16 |
| 5-7       | Built-In Filter With Accessories .....                      | 5-18 |

| Figure No. | Title   | Page |
|------------|---|------|
| 5-1        | Outside View .....  | 5-2  |
| 5-2        | Entrance Box .....  | 5-3  |
| 5-3        | Inside Fryer Tank Components .....                          | 5-4  |
| 5-4        | Frame-Cabinet / Electrical Assemblies With Components ..... | 5-7  |
| 5-5        | UFM Filter, Frame/Electrical Assembly .....                 | 5-9  |
| 5-6        | UFM Pilter, Pick-Up/Pan Assembly .....                      | 5-11 |
| 5-7        | UFM Filter, Motor / Return Assembly .....                   | 5-13 |
| 5-8        | Built-In Filter Pan With Components.....                    | 5-15 |
| 5-9        | Filter Piping With Components .....                         | 5-17 |
| 5-10       | Built-In Filter With Accessories .....                      | 5-19 |

## Chapter 4: Service

This chapter provides the qualified technician with the replacement and troubleshooting procedures necessary to service the Pitco fryer.

### 4.1 REPLACEMENT PROCEDURES

These procedures are provided to the qualified technician as a guide to removal and replacement of various fryer components. If a test is required to verify component operation after installation, it will be referenced.

#### WARNING

To prevent burns, always ensure the fryer is completely SHUT DOWN and COOLED down before working on the fryer. Do not break any fryer gas connections while the unit is connected to a gas supply line.

#### WARNING

The power supply must be disconnected before servicing or cleaning the appliance.

#### 4.1.1 Heating Element Removal and Replacement

Replacing a heating element is a complex and time consuming procedure. Ensure that you have tested the heating elements to determine that the element is bad and not something else.

- a. Move the fryer out to gain access to the rear panels. Remove the upper small access cover and the large lower access cover.
- b. The terminal block for the heating elements is located behind the lower access plate. Tag the connections with wire markers for easy reinstallation, and remove the wires. The temperature probe wires are not connected through the terminal board. To disconnect the temperature probe, remove the small access plate on top of the pivot box (plate opposite High Limit switch). The connector for the probe is inside the pivot box. Disconnect the probe at this connector and gently pull the wire out of the pivot box.
- c. Disconnect the spring assembly from the pivot box by raising the elements and holding them in place with a board across the tank. Do not use the element bracket to hold the elements up.
- d. Next remove the pivot box assembly by removing the screws that attach the pivot box hinges to the fryer. The heating elements will need to be raised to gain access to the screw heads. Support the heating element assembly before removing the screws. Removing the hinge screws frees the heating element assembly from the fryer.

- e. Once free of the fryer, set the element assembly aside. Remove the access plate on the back of the pivot box to gain access to the heating element connectors. Disconnect the wire for the defective element.
- f. Loosen the nuts that attach the heating element to the pivot box. Slide the heating element out of the pivot box.
- g. Install the new heating element by reversing this procedure.

#### **4.1.2 Backup Thermostat Replacement - Computer Models Only**

Only fryers that have computer controls have this backup thermostat. If your fryer does not have a computer but does have a thermostat behind the door, this is a thermostat behind the door model. That means that the knob behind the door controls the solid state temperature module behind the fryer's control panel (front bezel). The backup thermostat includes the temperature adjustment knob, temperature sensor inside the fryer tank, and connecting capillary tubing. The high limit controls also has a temperature sensor in the fryer tank, so ensure you are removing the correct temperature sensor.

#### **CAUTION**

Thermostat capillary tubing is very delicate. Be VERY CAREFUL when working with the capillary tubing. If the tubing is kinked or broken the thermostat is no longer usable.

- a. Drain the oil from the fryer. The thermostat probe (heat sensor) is clamped to the heating element assembly inside the tank. Unscrew and remove the two screws in the thermostat probe clamp.
- b. Remove the thermostat probe from the clamp and straighten the capillary tubing. Unscrew the small hex nut inside the cabinet under the tank for the thermostat control.
- c. Unscrew the large connector nut from the fryer tank and pull the thermostat probe and capillary tubes through the opening.
- d. Pull the knob off of the thermostat. Remove the entrance box cover to gain access to the thermostat.
- e. Mark and disconnect the wires from the thermostat terminals.
- f. Remove the two screws that hold the thermostat to the inside of the entrance box. Remove the defective thermostat control unit from the fryer.
- g. Install the new thermostat in reverse order. Remember to be careful with the capillary tubes.

- h. Use pipe joint compound on the large fitting before installing to prevent oil leakage. DO NOT use joint compound on the small nut.
- i. Perform the calibration procedures detailed in section 1.5.3.

### **4.1.3 Calibrating the Thermostat - Computer Models Only**

To calibrate this thermostat the dial must be removed from the shaft. The adjustment for the thermostat is inside the dial shaft.

- a. To calibrate the thermostat you must first cause the computer to switch control to the backup thermostat. To do this, remove the computer from the front panel and disconnect the connector from the computer. The transfer relay will de-energize and temperature control will shift to the backup thermostat.
- b. Place the tip of a high accuracy thermometer in the shortening approximately 1" above the temperature sensor.
- c. Set the thermostat dial to 325°F and turn the fryer on.
- d. Remove the thermostat dial by pulling the knob straight out. DO NOT rotate the dial.
- e. Hold the outside of the shaft so it does not move. Use the tip of a small, flat tip screw driver to scrape away the sealing compound from the adjustment screw. Turn the adjustment screw clockwise to lower the temperature setting, and counterclockwise to raise the temperature. One quarter turn will change the temperature approximately 25°F.
- f. Turn the adjustment until the heating elements turn off at 325°F. Replace the knob and allow the fryer to cycle 4 to 6 times. Check the temperature of the thermometer against the thermostat dial, if it is greater than 5°F repeat the calibration procedure.
- g. When the calibration is correct, remove the thermometer.

## **4.2 TESTING CONTACTORS (RELAYS)**

Contactors and relays use a control voltage to energize the electro magnet and close a set of contacts. The control voltage is applied to a solenoid-type coil. When measuring a coil's resistance, ensure that you have disconnected it from the fryer's electrical system. This will ensure that you are measuring the coil's resistance and not a portion of the fryer's wiring. When measured with an OHM meter these coils should have a very low resistance, less than 100 ohms. Measure each of the contactors that are suspect. If any relay or contactor indicates an open circuit or high amount of resistance, replace the coil.



### **4.3 TESTING HEATING ELEMENTS**

To check a heating element first place the OFF-ON-START switch in OFF. Check the elements by performing the following:

- a. The terminal block that connects the heating elements to the fryer is located behind the large rear access panel. Move the fryer out and remove the access panel.
- b. Using an OHM meter check continuity from one end of the element to the other. The reading should be very low (a few ohms). If the element indicates an open circuit, replace the element.
- c. Next check from the hot side of the element to ground. It should be infinite, if it is not replace the element.

### **4.4 TESTING THE TEMPERATURE SETTING POTENTIOMETERS**

The temperature setting potentiometer is a variable resistors. To test the potentiometer ensure that the OFF-ON-START switch is OFF and perform the following:

- a. For thermostat knobs mounted on the front of the fryer, remove the front bezel to gain access to the back of the potentiometer. If the fryer has the thermostat knob mounted behind the door (in the entrance box), remove the entrance box cover to gain access to the back of the potentiometer.
- b. Disconnect P10 from J10.
- c. Connect an ohm-meter to pin 3 (yellow wire) and pin 1 (violet wire) and rotate the temperature control knob. The resistance should vary from 0 to 900 ohms.
- b. Connect the ohm-meter between pin 3 (yellow wire) and pin 5 (orange wire) and rotate the knob. The resistance should again vary from 0 to 900 ohms. If the resistance is not within the ranges specified replace the temperature setting potentiometer.

### **4.5 TESTING THE TEMPERATURE CONTROL MODULES**

The temperature control module receives 24 VAC when the OFF-ON-START switch is ON. To test the temperature control module perform the following:

- a. The temperature control module is located behind the front bezel. Remove the two screws that hold the bezel in place and move out of the way.
- b. Place the OFF-ON-START switch in ON and the Melt switch in OFF. This will apply 24 VAC to pin 1 (black wire) with pin 3 as the common (white wire) of the temperature control module.

- c. Set the temperature setting potentiometer to a temperature above the shortening's current temperature. This will cause the temperature control module to close and pass 24 VAC to pin 12 (gray wire) of the control module.
- d. Check the temperature probe as described in section 4.6.
- e. If the temperature probe test passes and there is not 24 VDC present on pin 12 of the control module, replace the temperature control module.

#### **4.6 TESTING THE TEMPERATURE PROBE**

**WARNING**

All power supplies must be disconnected before servicing the appliances. Some appliances have more than one power supply. Make sure they are ALL disconnected.

The temperature probe is a special type of resistor called a thermistor. Check the temperature probe by performing the following:

- a. Gain access to the temperature probe connection by removing the front panel. Disconnect P10 and check the resistance of the probe at pins 2 & 4 of P10.
- b. Place the OFF-ON-START switch in OFF. Use an ohm-meter to measure the resistance across the probe. It should be about 100K ohms at room temperature (72°F, 22°C). If the probe indicates an open or more than 200 ohms away from 100K ohms, replace the probe.
- c. Re-install the probe wires and turn on the fryer. Start the fryer and raise the shortening temperature to normal cooking temperature, approximately 350°F.
- d. Unplug the temperature probe and measure the resistance again. It should read approximately 923.8 ohms  $\pm$ 10 ohms. If the resistance is different by more than 10 ohms, replace the temperature probe.

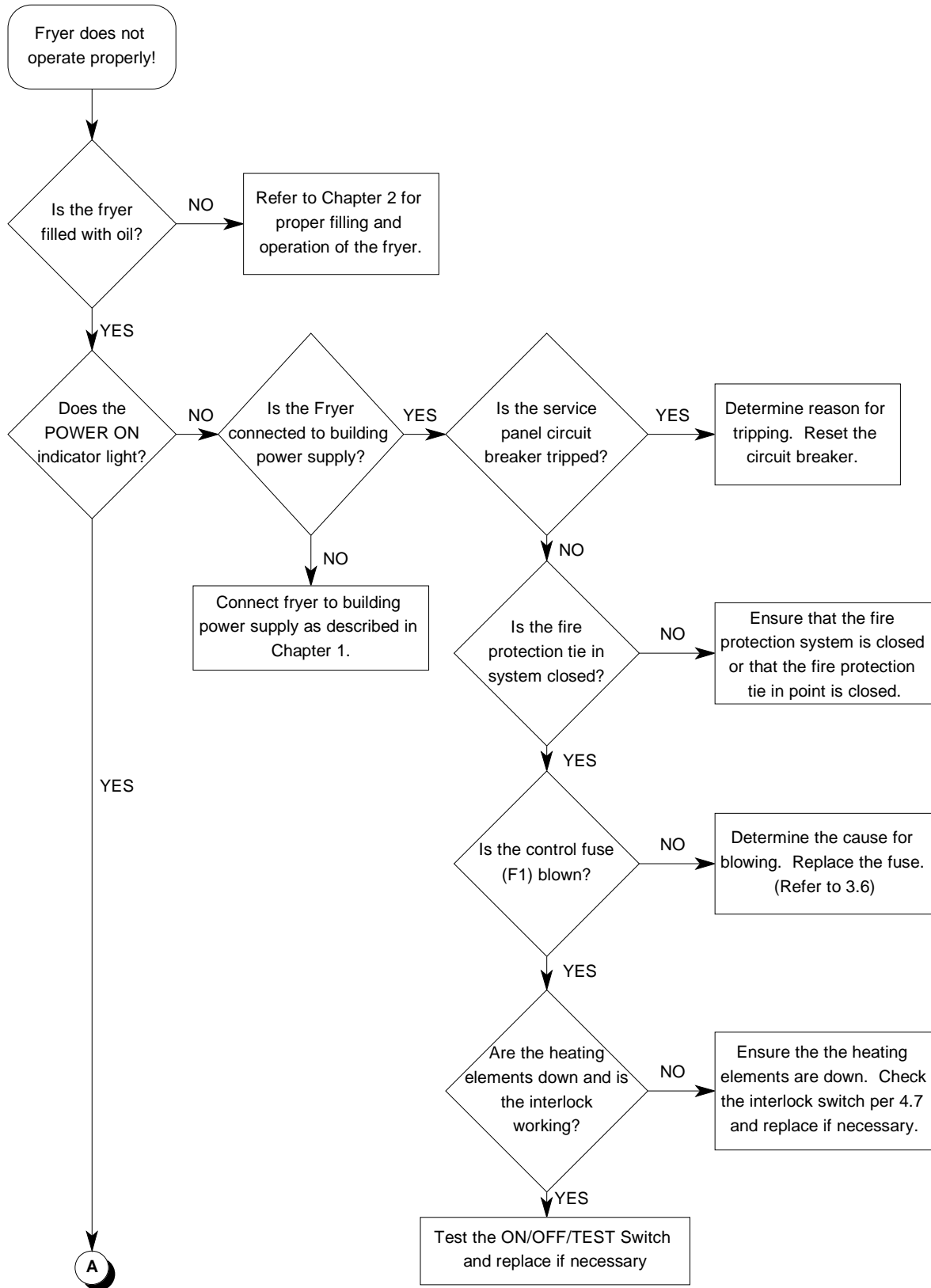
#### **4.7 TESTING THE HEATING ELEMENT INTERLOCK**

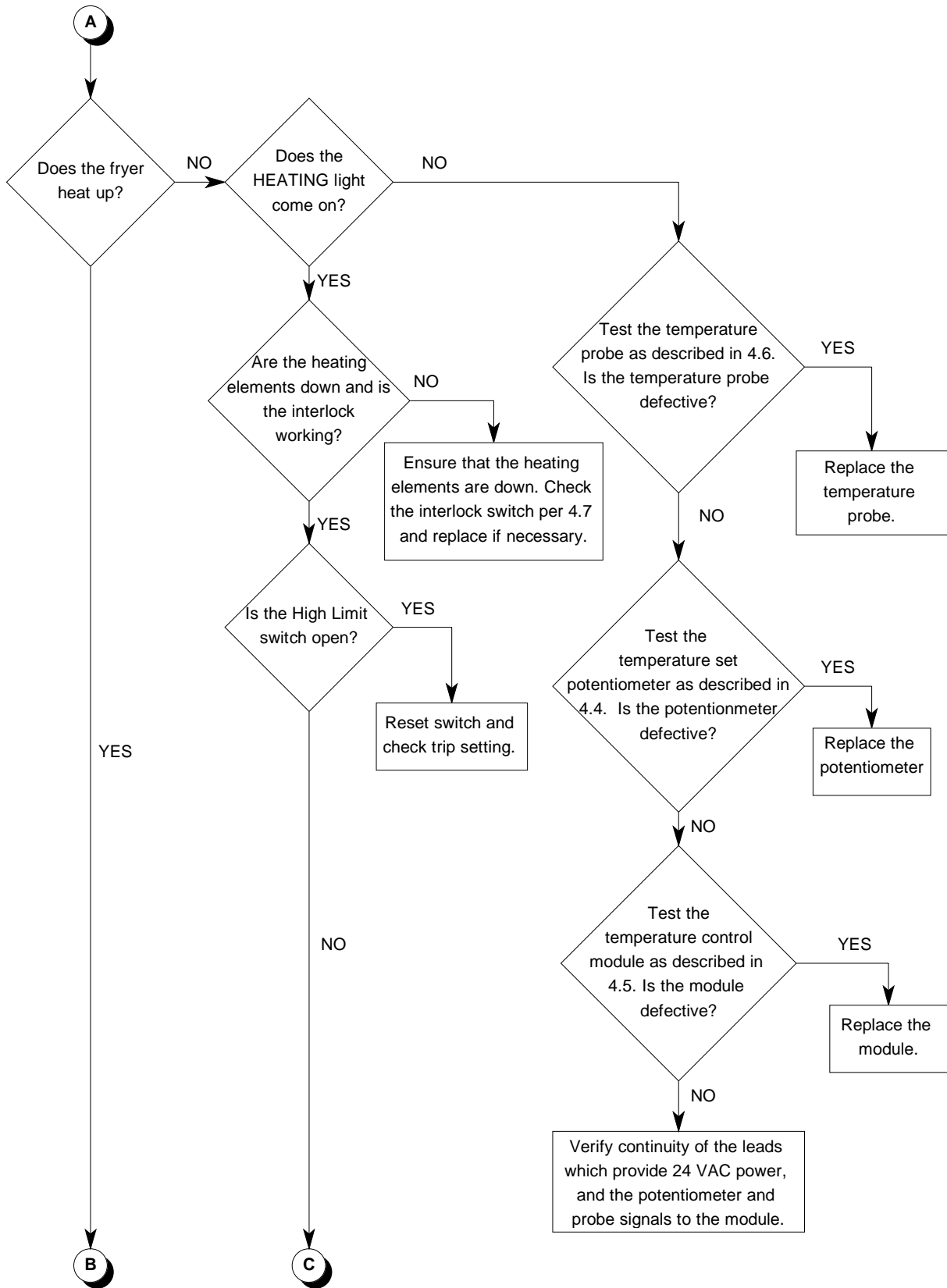
The heating elements are protected from accidental over heating, due to lifting them out of the oil while unit is ON, by an interlock limit switch. The switch is located on the right side (opposite the High Limit switch) of the heating element pivot box.

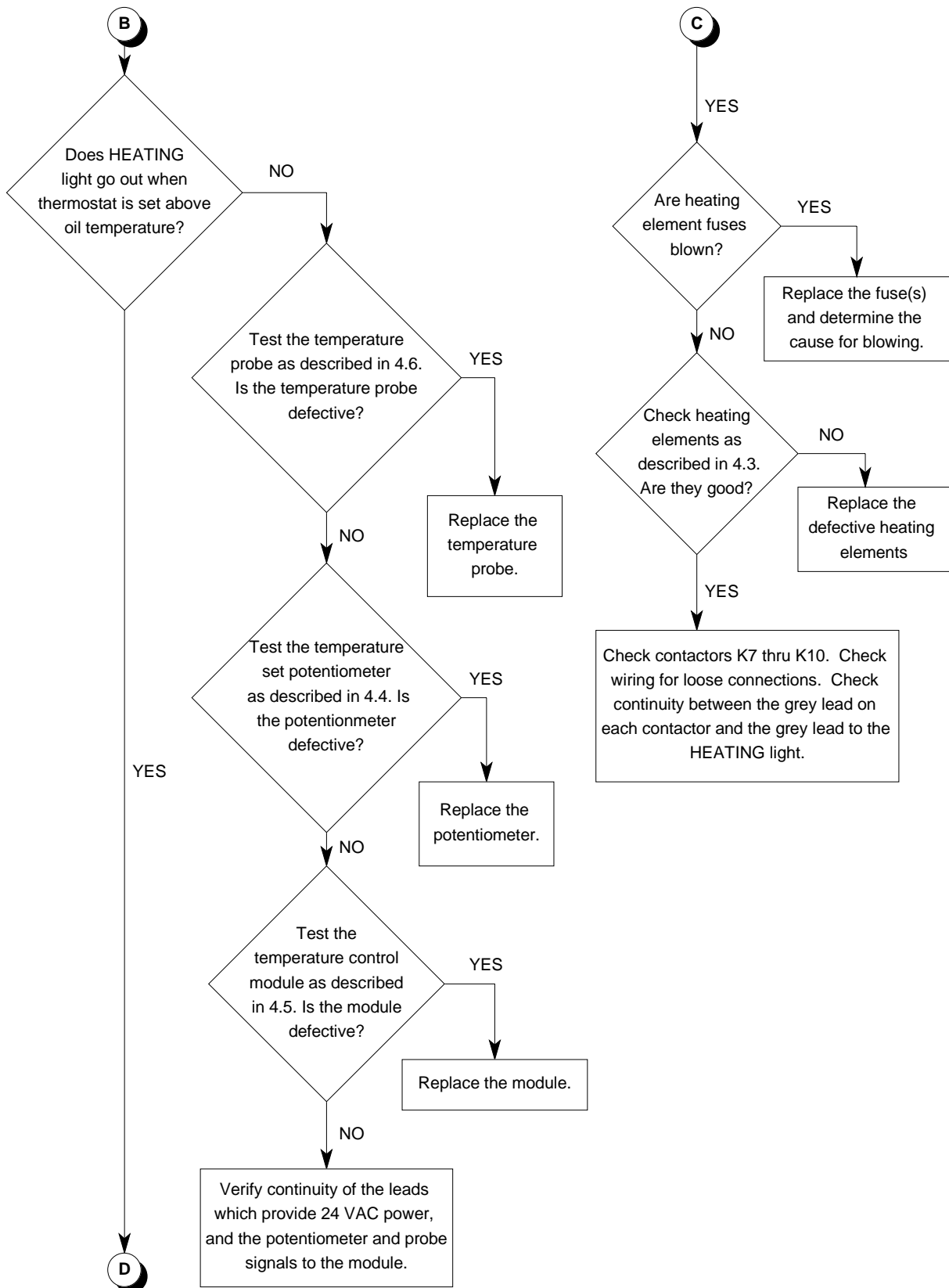
- a. This test requires that you gain access to the back of the interlock switch. Remove the four screws from the small access plate on the top, right of the pivot box. Gently move the wiring harness to the side to expose the wiring terminal of the interlock switch.

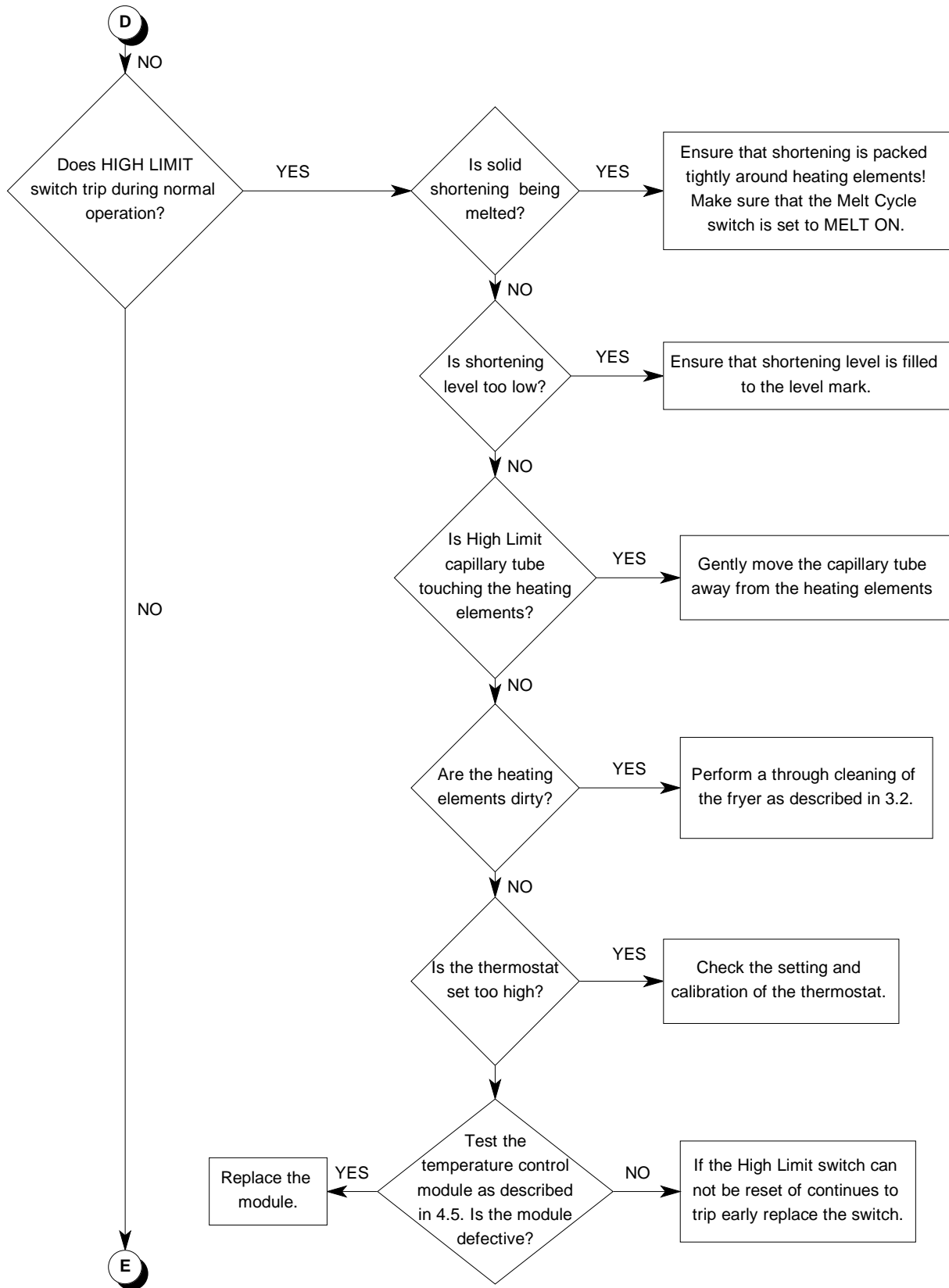
- b. Connect an ohm-meter across the switch terminals to measure the resistance across the limit switch connection.
- c. When the elements are down in the tank the interlock switch is closed and the resistance across the switch will be zero.
- d. Lift the element rack up while continuing to measure the resistance across the switch. The rack only needs to be lifted a short distance to open the switch. A click should be heard when the switch opens. The resistance will go up significantly when the switch opens. The resistance will not be infinite unless the switch wires are disconnected. If there is any doubt about the resistance, remove the wires and check the resistance. With the wires removed the resistance will be infinite.

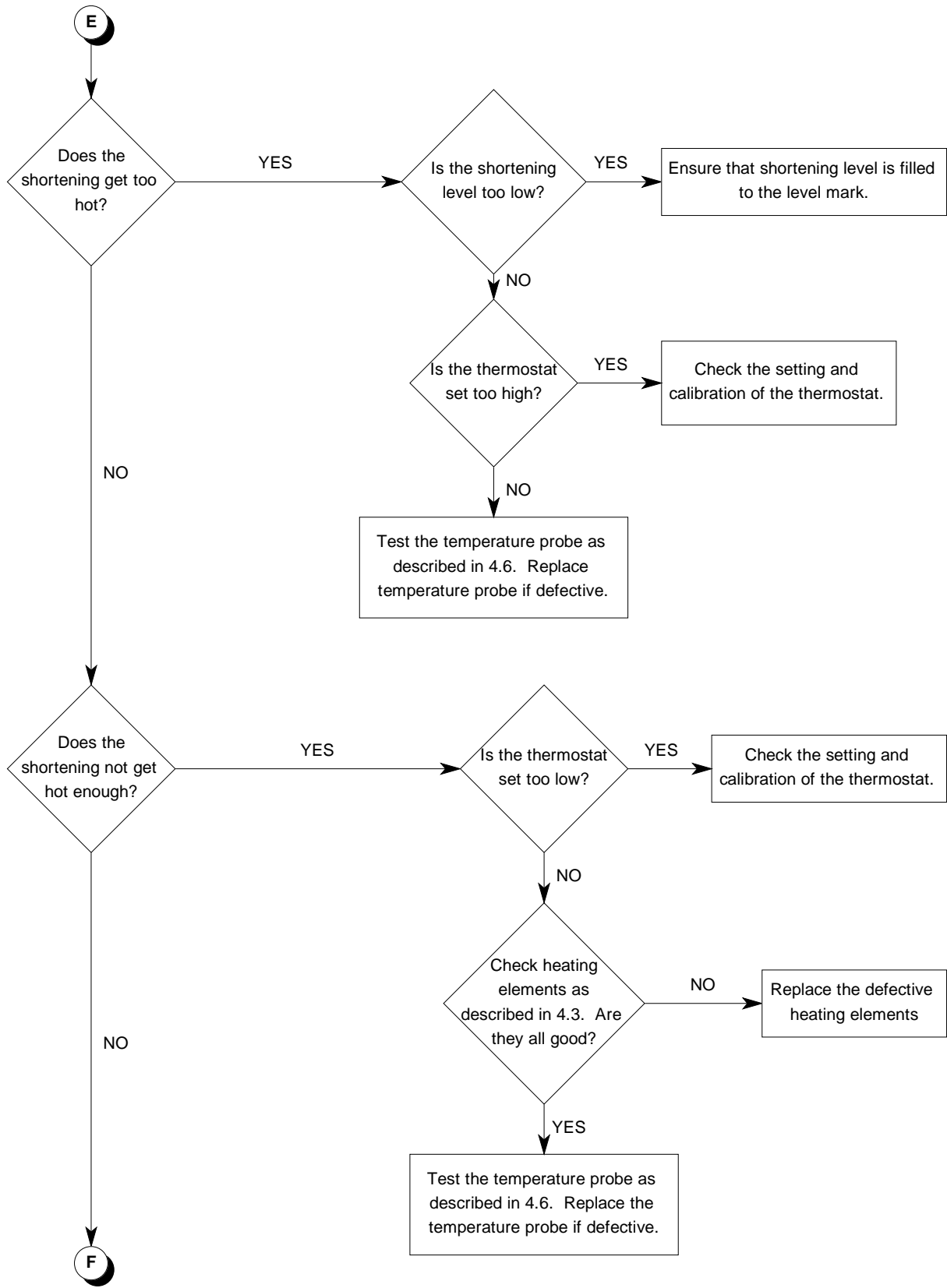
## 4.8 TROUBLESHOOTING FRYERS WITHOUT COMPUTERS



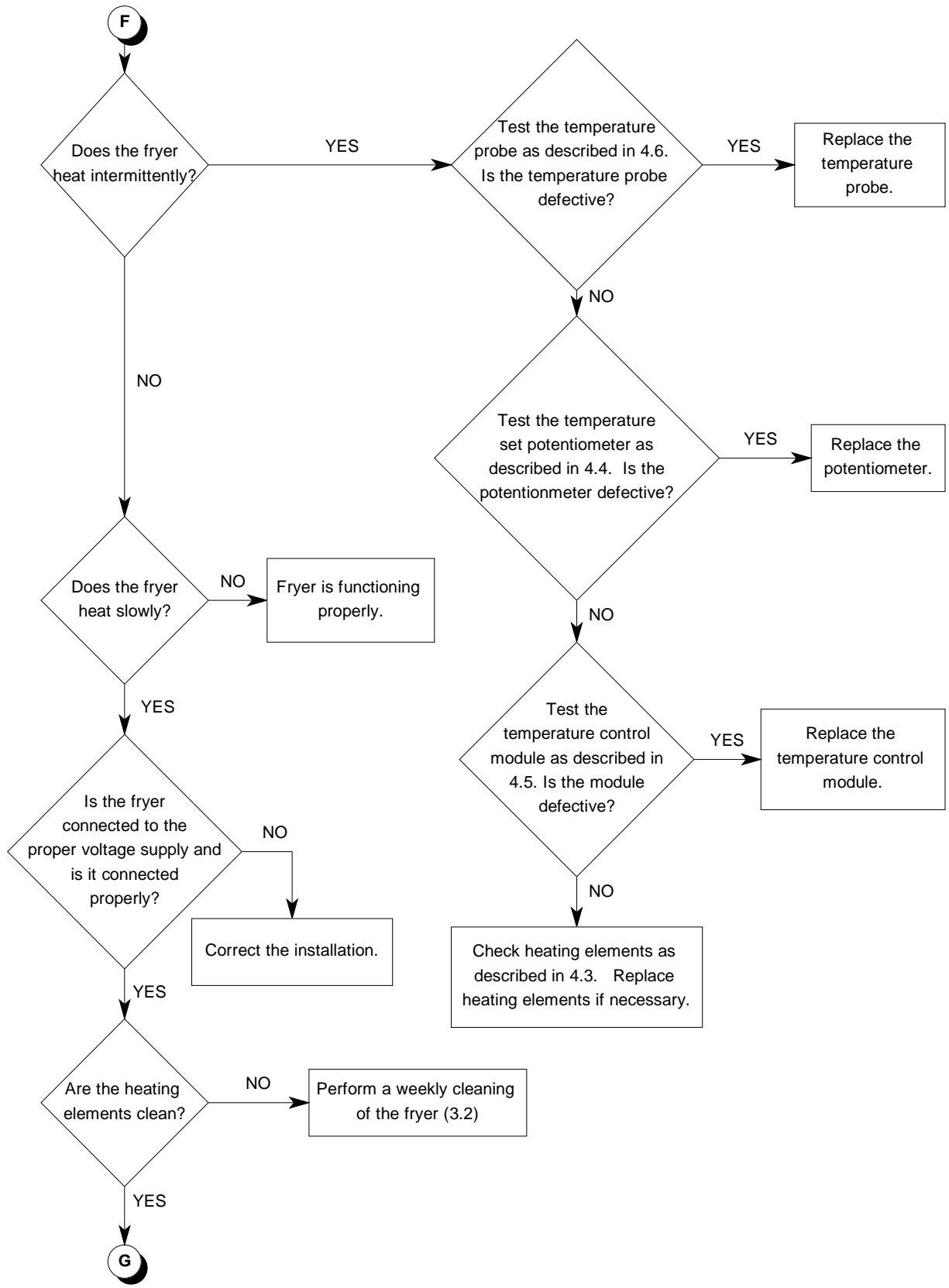


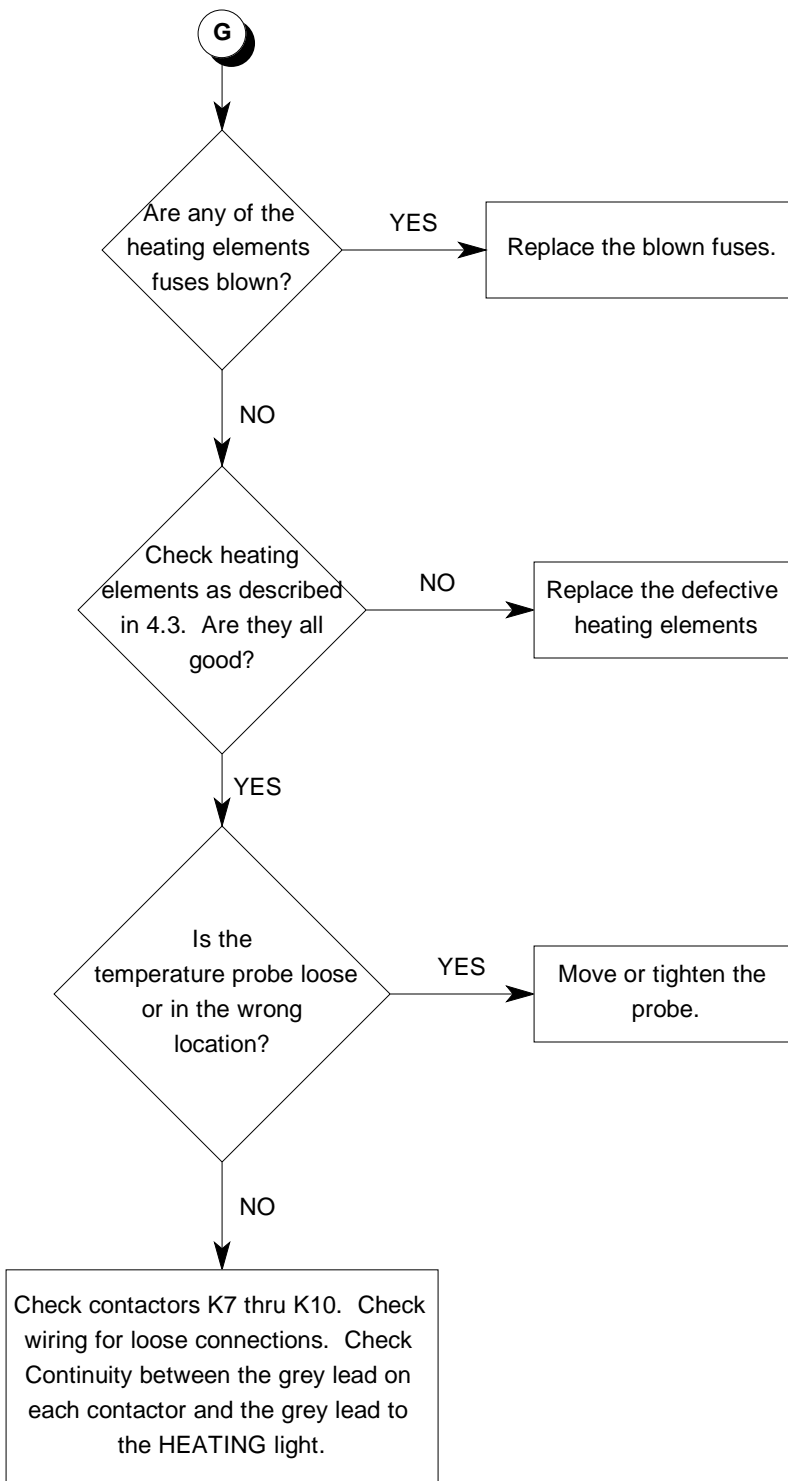




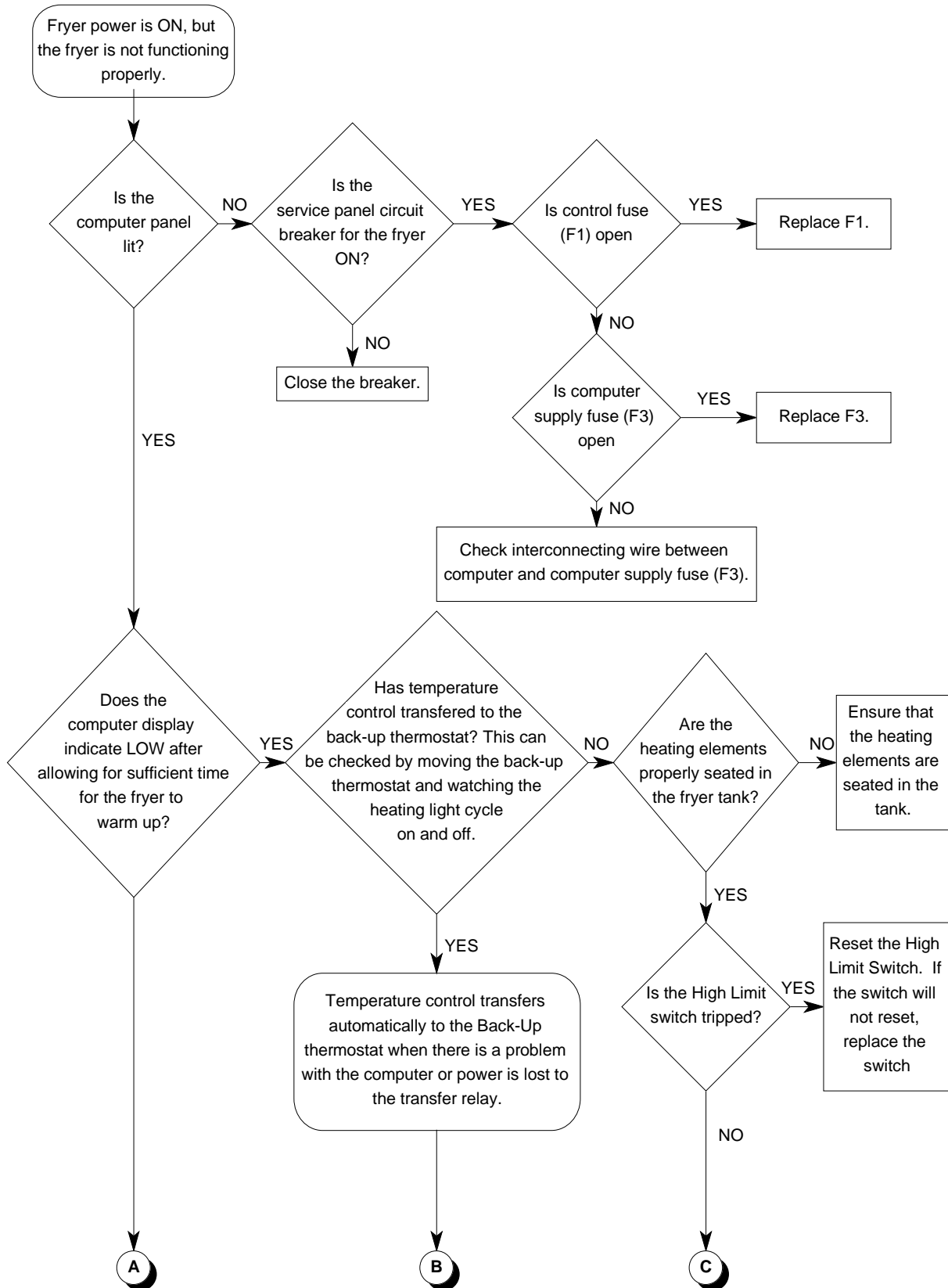


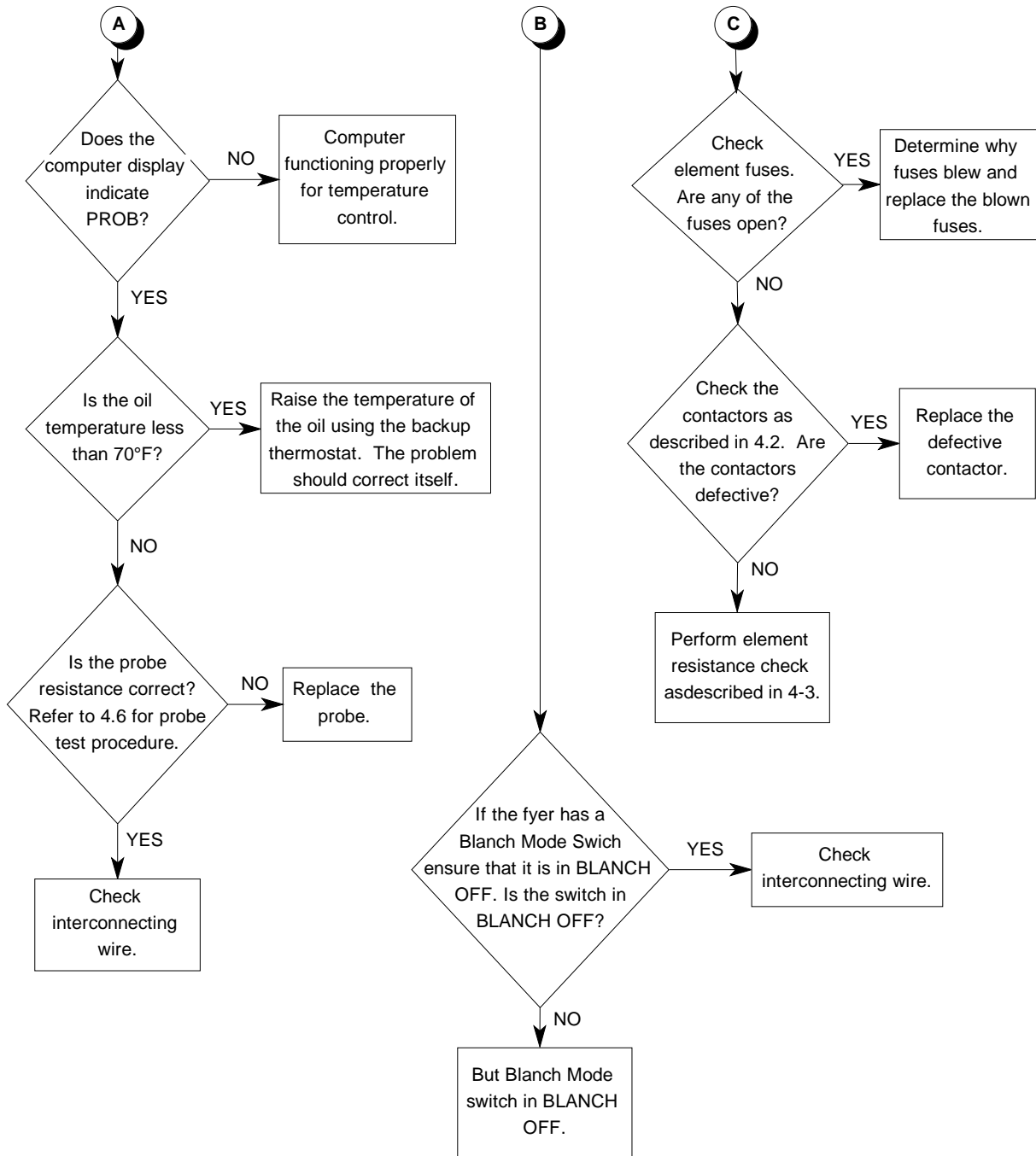




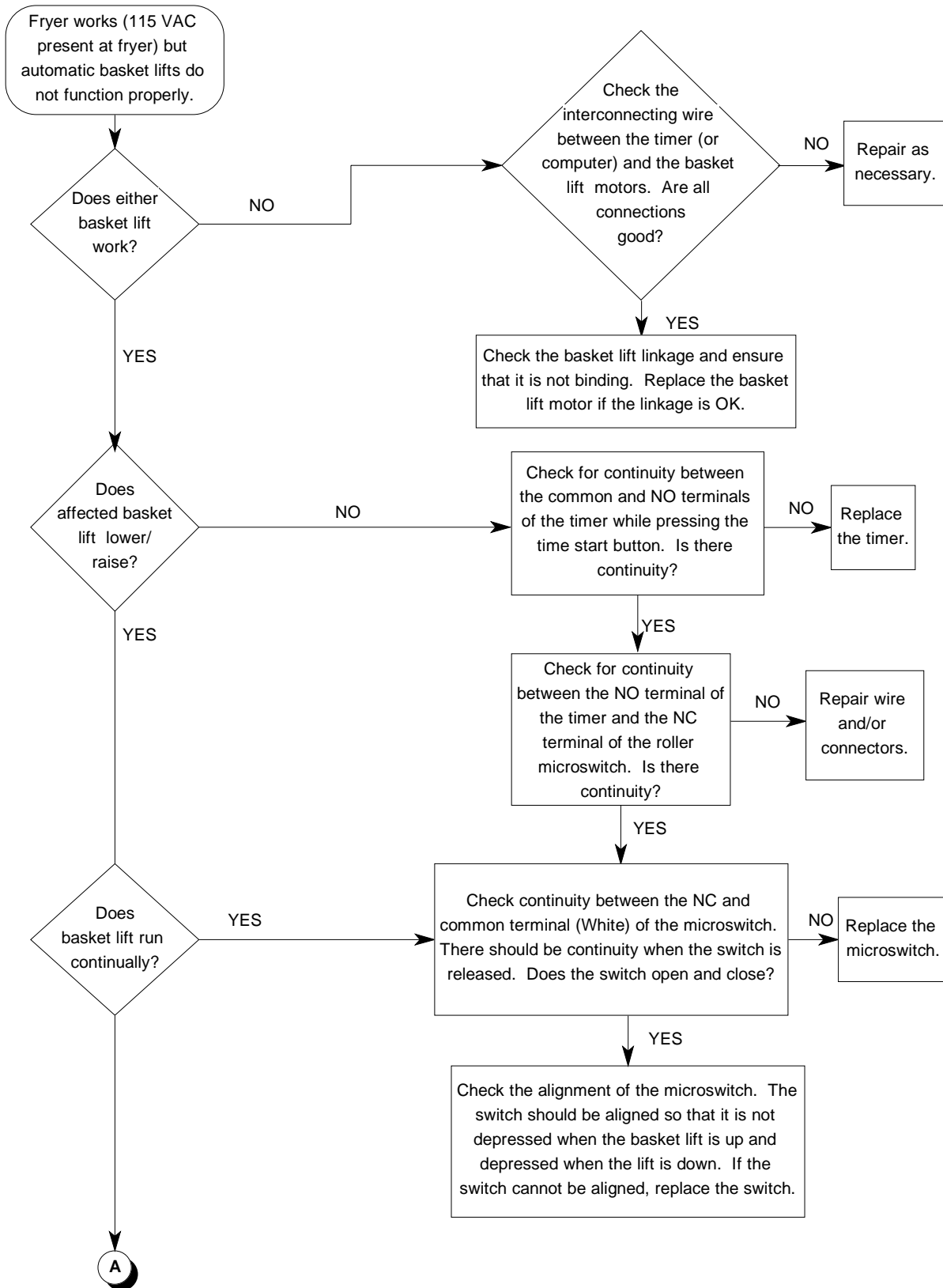


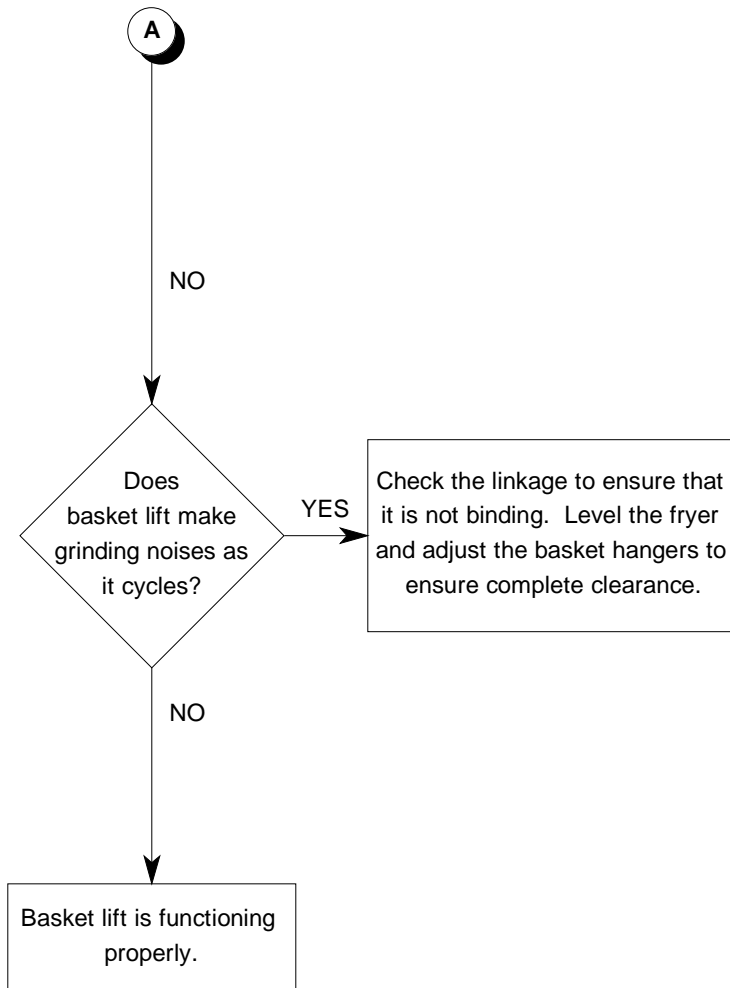
## 4.9 TROUBLESHOOTING FRYERS WITH COMPUTERS



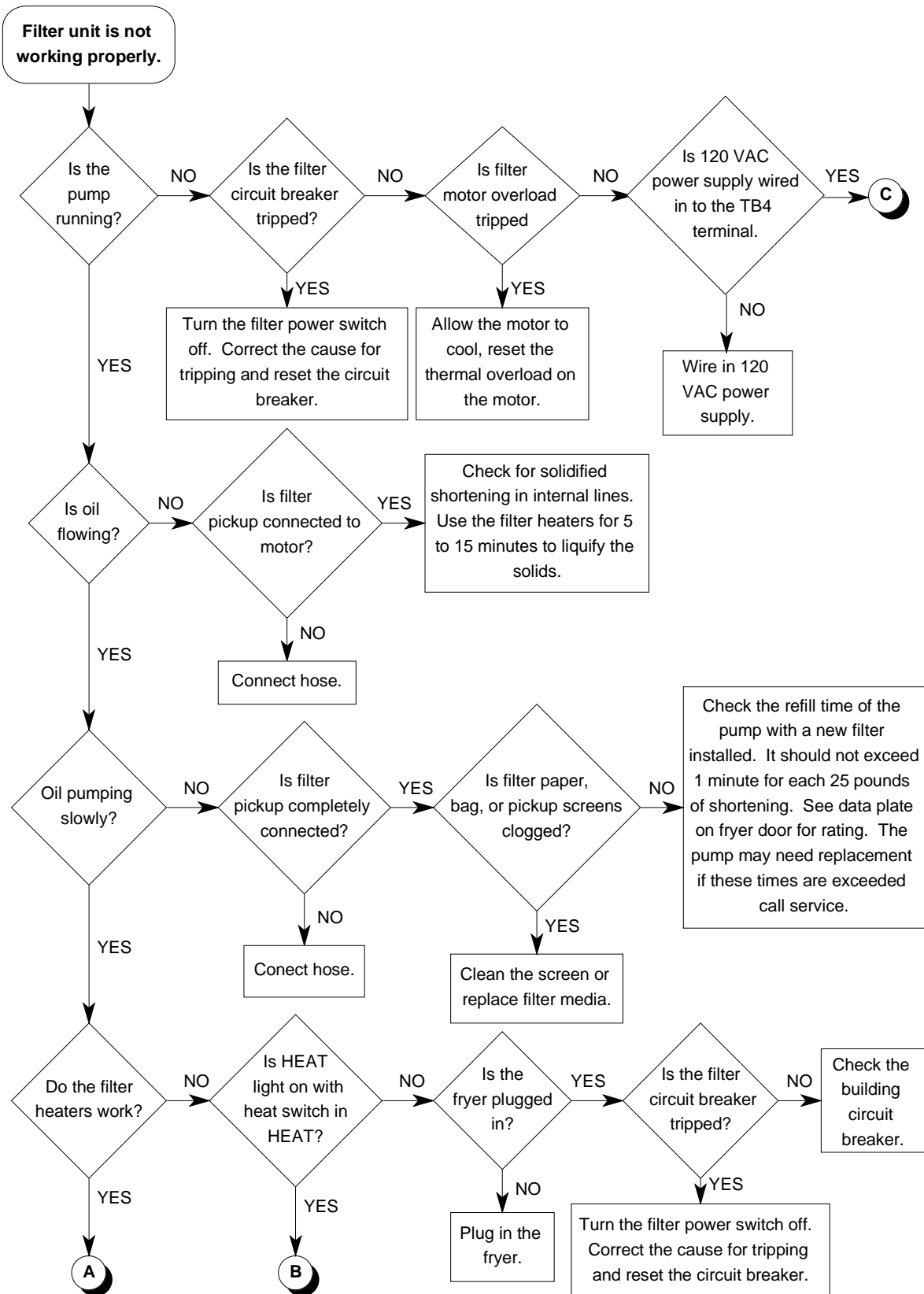


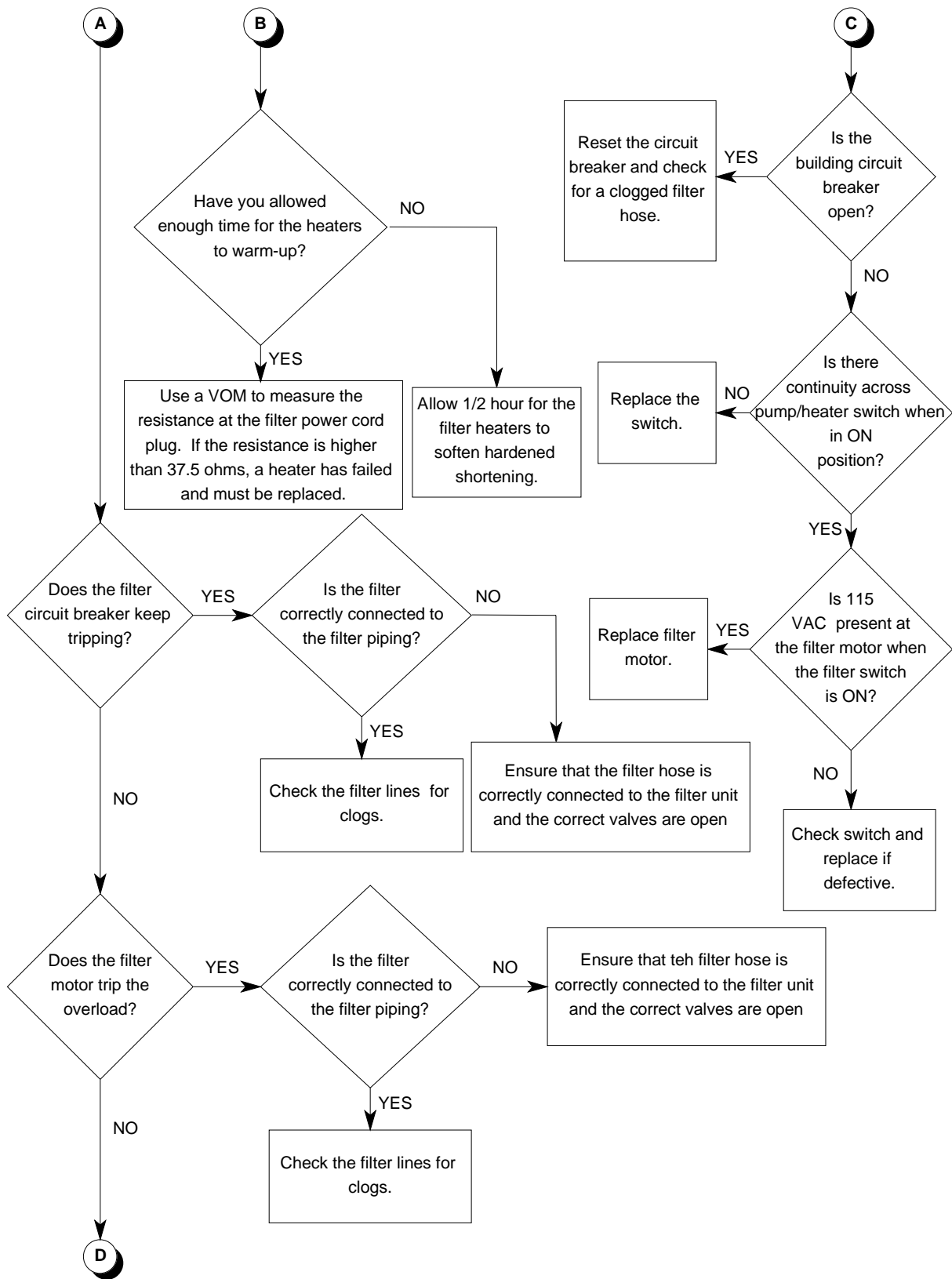
## 4.10 TROUBLESHOOTING BASKET LIFT PROBLEMS



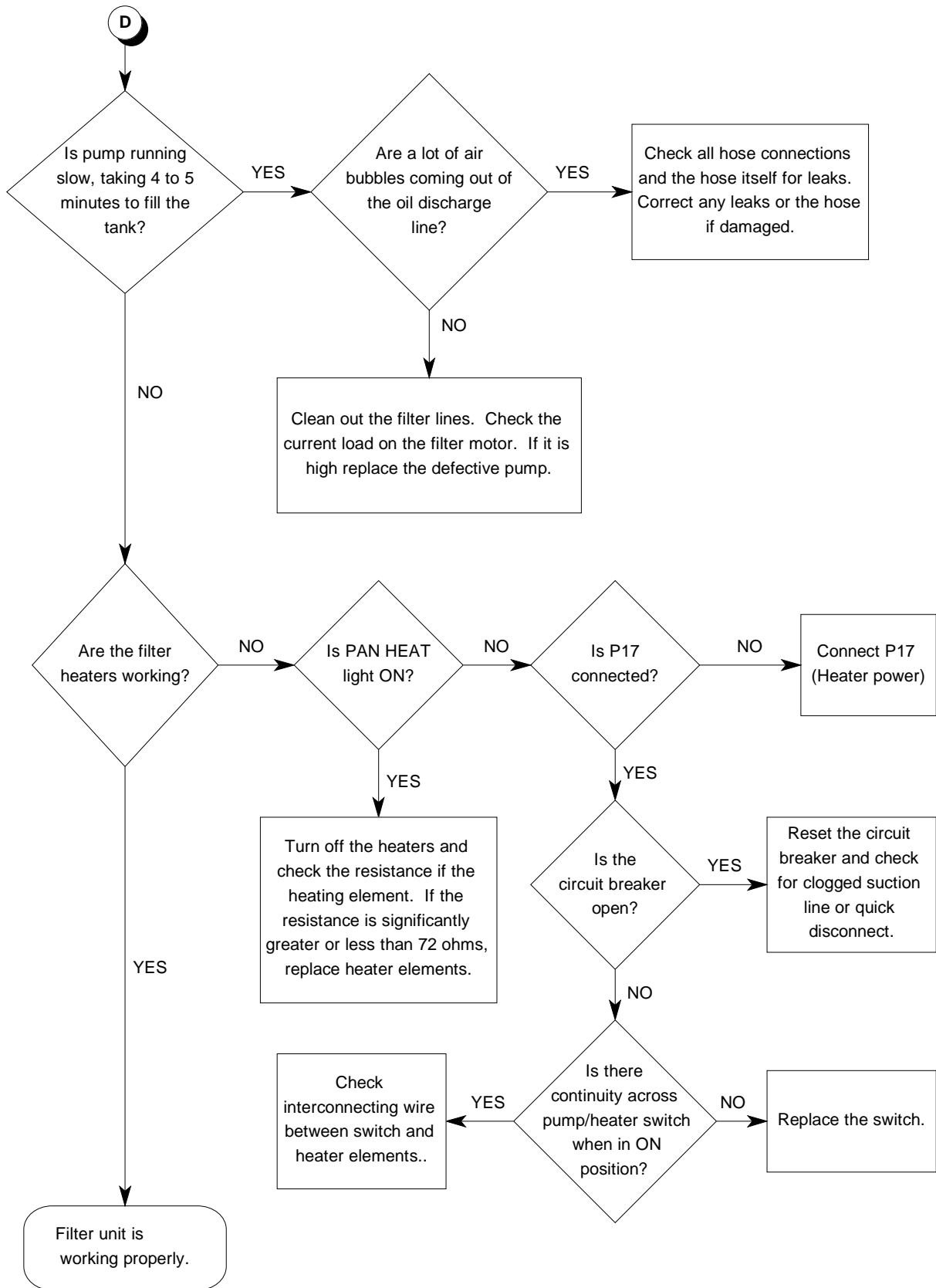


## 4.11 TROUBLESHOOTING BUILT-IN FILTER UNITS

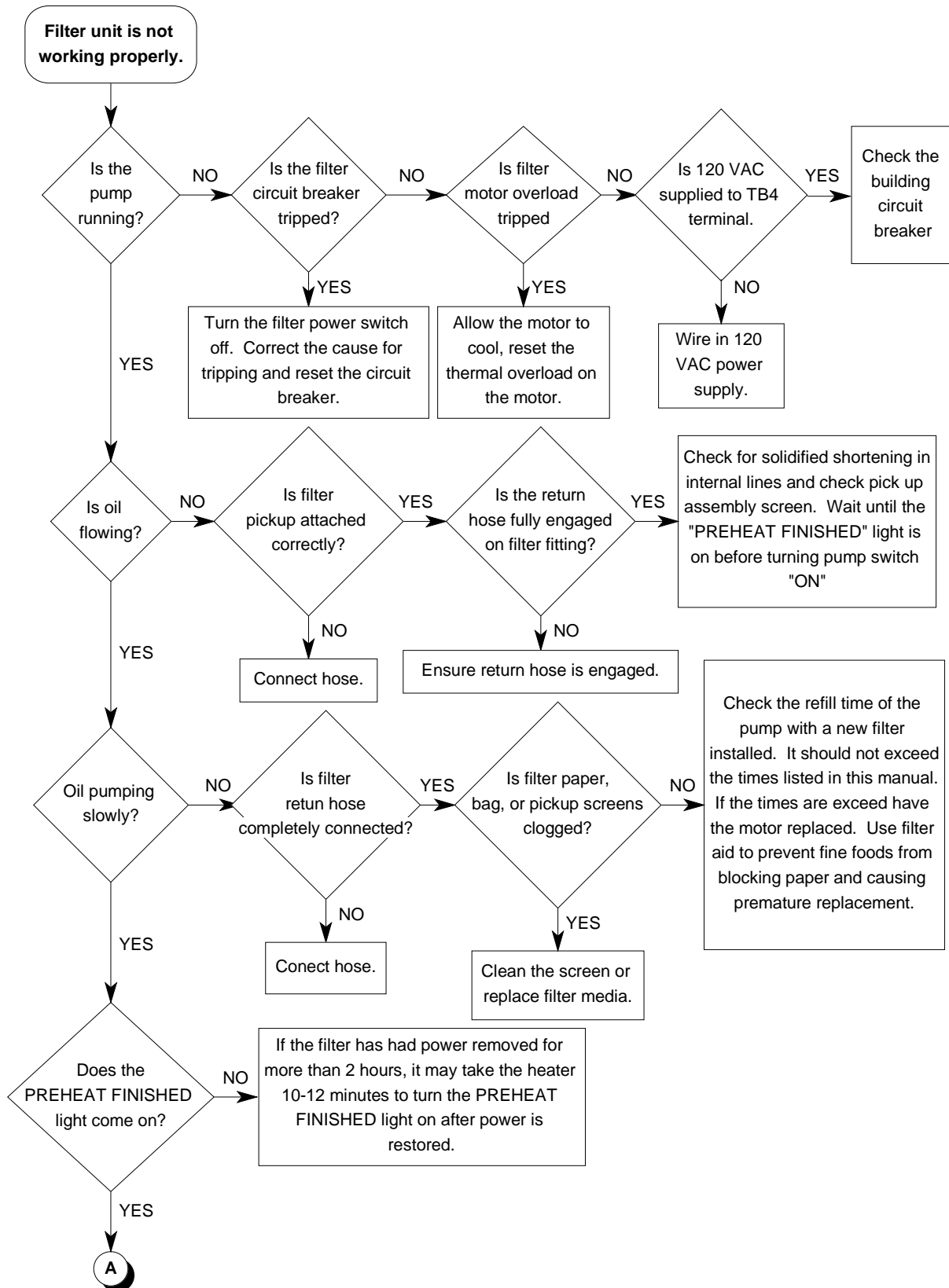


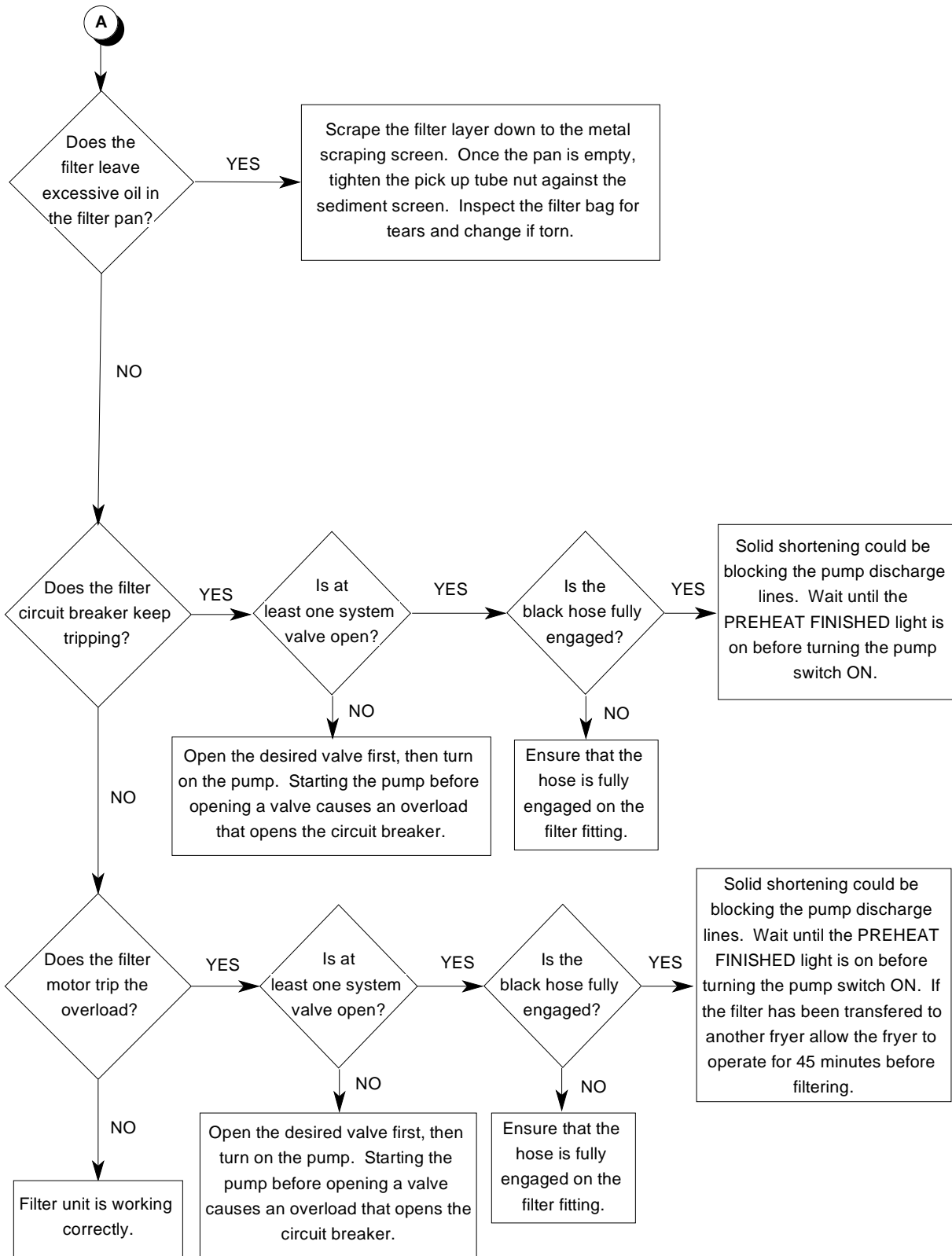






## 4.12 TROUBLESHOOTING UFM FILTER UNITS

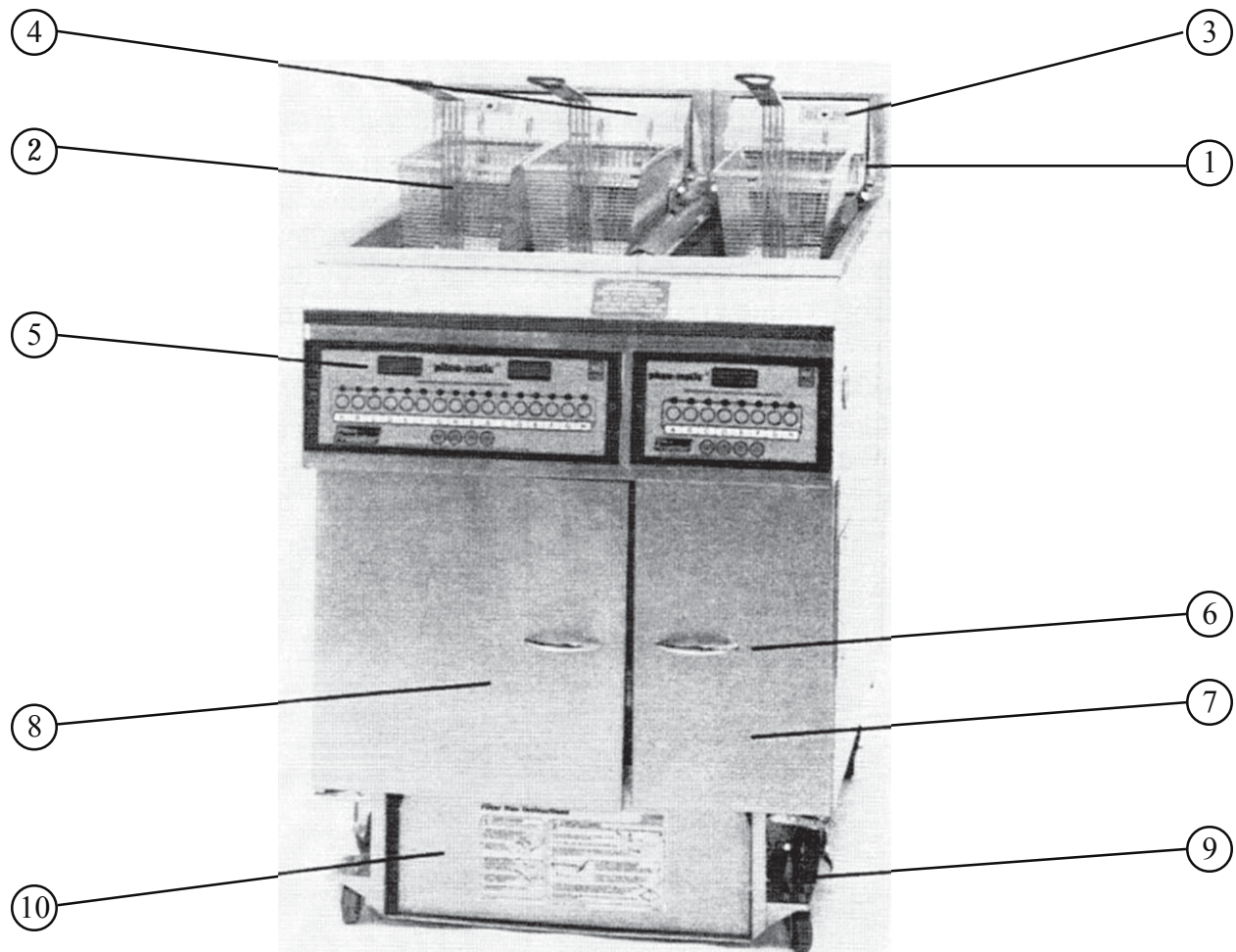




## **Chapter 5: Parts**

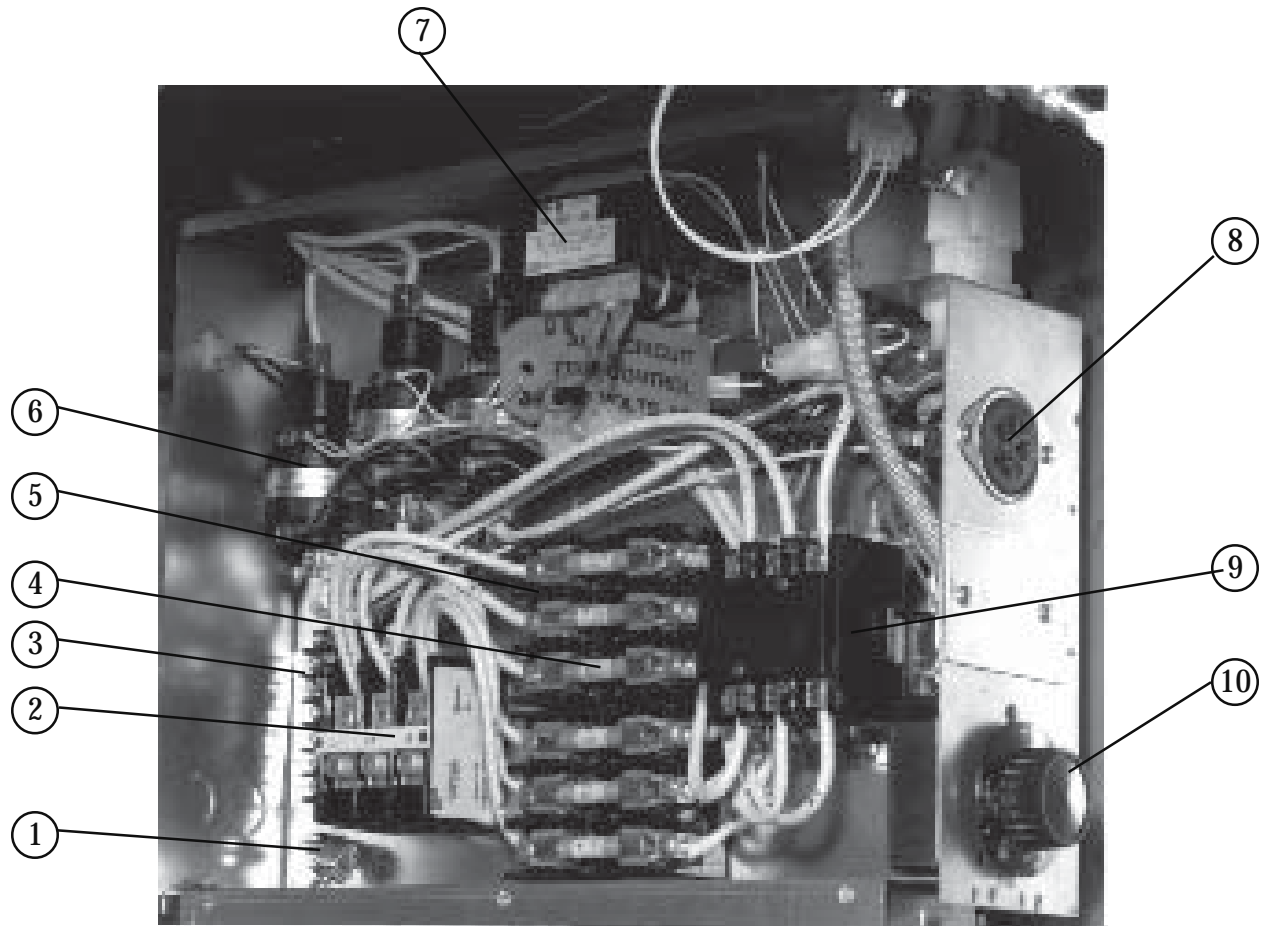
This chapter contains listings of the components used in the different models of universal fryers. These components are listed in two places, with the illustration and in ordered listings. The illustrations in this chapter are provided to show relative location of components located in the fryer. The fryer you have may not be illustrated in this chapter, but the part locations should be the same. With each illustration there is a table of components in numerical order by illustration number. The illustration has numbered lines pointing to components which are listed in the table.

At the end of this chapter there are alphabetical and numerical listings of all parts used in the universal fryers. The alphabetical part list is arranged in alphabetical order according to the part name. Each part name also has the Pitco Frialator part number. The numerical list is in Pitco Frialator part number order. A brief description of each component is provided for each part.



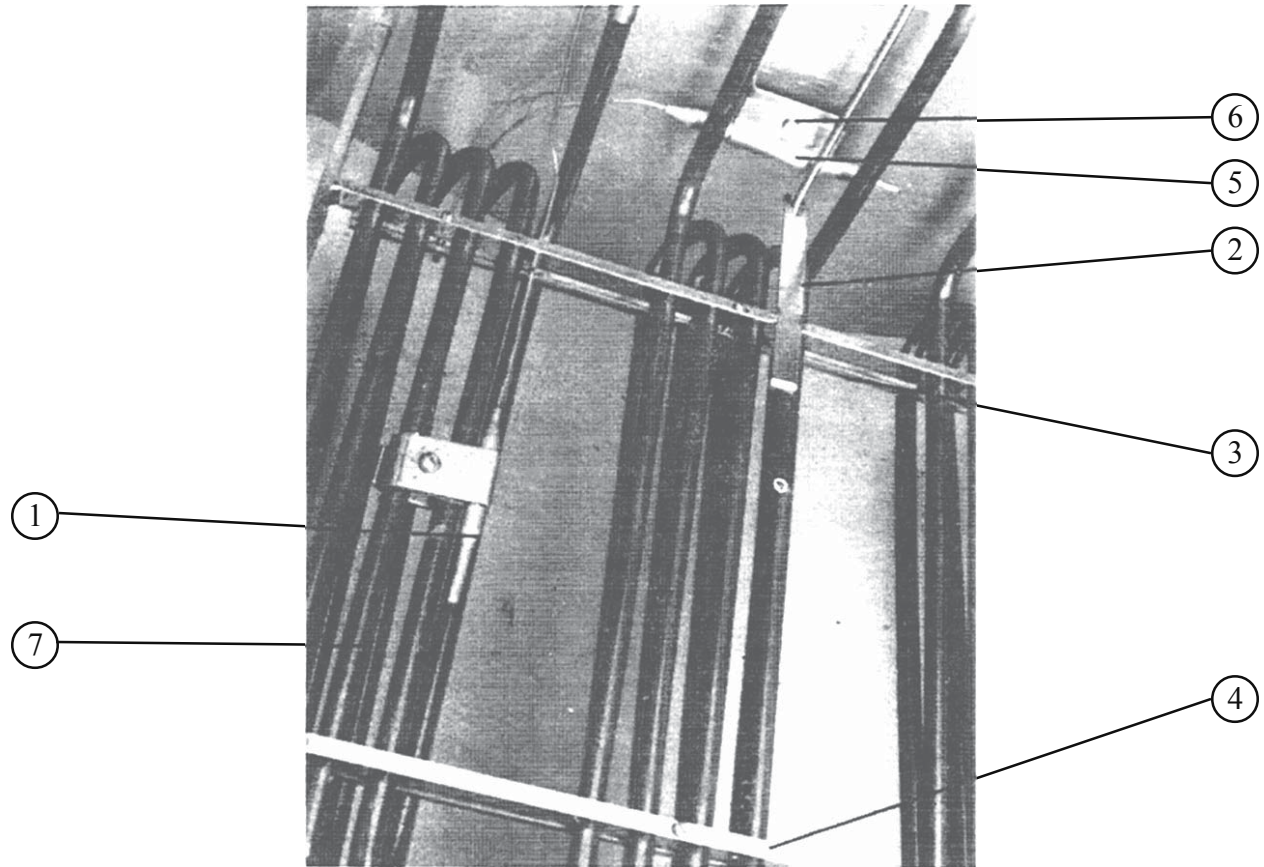
| Index Number | Description                   | Index Number | Description |
|--------------|-------------------------------|--------------|-------------|
| 1            | Basket Hanger                 |              |             |
| 2            | Basket                        |              |             |
| 3            | High Limit Cover              |              |             |
| 4            | Interlock Switch Access Cover |              |             |
| 5            | Computer                      |              |             |
| 6            | Door Handle                   |              |             |
| 7            | Right Hand Door               |              |             |
| 8            | Left Hand Door                |              |             |
| 9            | Caster Set                    |              |             |
| 10           | UFM Filter Module (Optional)  |              |             |

Figure 5-1 Outside View



| Index Number | Description           | Index Number | Description |
|--------------|-----------------------|--------------|-------------|
| 1            | Ground Lug            |              |             |
| 2            | Terminal Block        |              |             |
| 3            | Terminal Block        |              |             |
| 4            | Fuses (6)             |              |             |
| 5            | Fuse Block            |              |             |
| 6            | Contactor, Mercury    |              |             |
| 7            | Transformer           |              |             |
| 8            | Receptacle            |              |             |
| 9            | Contactor, Mechanical |              |             |
| 10           | Thermostat Knob       |              |             |

Figure 5-2 Entrance Box



| Index Number | Description                | Index Number | Description |
|--------------|----------------------------|--------------|-------------|
| 1            | Auxiliary Thermostat Probe |              |             |
| 2            | Computer Probe Clamp       |              |             |
| 3            | Computer Probe             |              |             |
| 4            | Element Bottom Bar         |              |             |
| 5            | Bracket Screens            |              |             |
| 6            | Element Rack               |              |             |
| 7            | High Limit Probe           |              |             |
| 8            | High Limit Probe Clamp     |              |             |
| 9            | Element                    |              |             |

Figure 5-3 Inside Fryer Tank Components

THIS PAGE INTENTIONALLY LEFT BLANK.



Table 5-1 Frame-Cabinet / Electrical Assemblies With Components

| Item Number | Pitco Frialator Part Number | Description                  | Quantity Per Unit |
|-------------|-----------------------------|------------------------------|-------------------|
| 1           | B7446005                    | Pan Liner #14                | 1                 |
|             | B7446006                    | Pan Liner #18                | 1                 |
| 2           | A6611401                    | Stop #14                     | 1                 |
|             | A6611403                    | Stop #18                     | 1                 |
| 3           | P5046980                    | Heater Strip                 | 2                 |
| 4           | P6071448                    | Plug Hole 2"                 | 1                 |
| 5           | A6613101                    | Cover, Side                  | 1                 |
| 6           | A1819602                    | Bracket, Door Magnet         | 1                 |
| 7           | P6071300                    | Magnet                       | 1                 |
| 8           | B3900101                    | Leg Set                      | 1                 |
| 9           | B7402238                    | Bracket, Circuit Breaker     | 1                 |
| 10          | PP10104                     | Circuit Breaker              | 1                 |
| 11          | PP10082                     | Light, 125V Amber            | 1                 |
| 12          | PP10195                     | Screw, Button Head Hex       | 2                 |
| 13          | A6042801                    | Overlay                      | 1                 |
| 14          | PP10375                     | Switch, Rocker               | 1                 |
| 15          | B3600202                    | Front Panel Weldment         | 1                 |
| 16          | B7230202                    | Hinge, Top Door              | 1                 |
| 17          | B2301208                    | Door #14                     | 1                 |
|             | B2301210                    | Door #18                     | 1                 |
| 18          | P6071516                    | Handle, Door                 | 1                 |
| 19          | B7230302                    | Hinge, Bottom Door           | 1                 |
| 20          | P0075200                    | Screw, 2 #8 x 1/2 Self Drill | 10                |
| 21          | PP10686                     | Screw 6-32 x 1/4             | 2                 |
| 22          | PP10025                     | Screw 10-32 x 1/4            | 2                 |

Revised 5/28/93

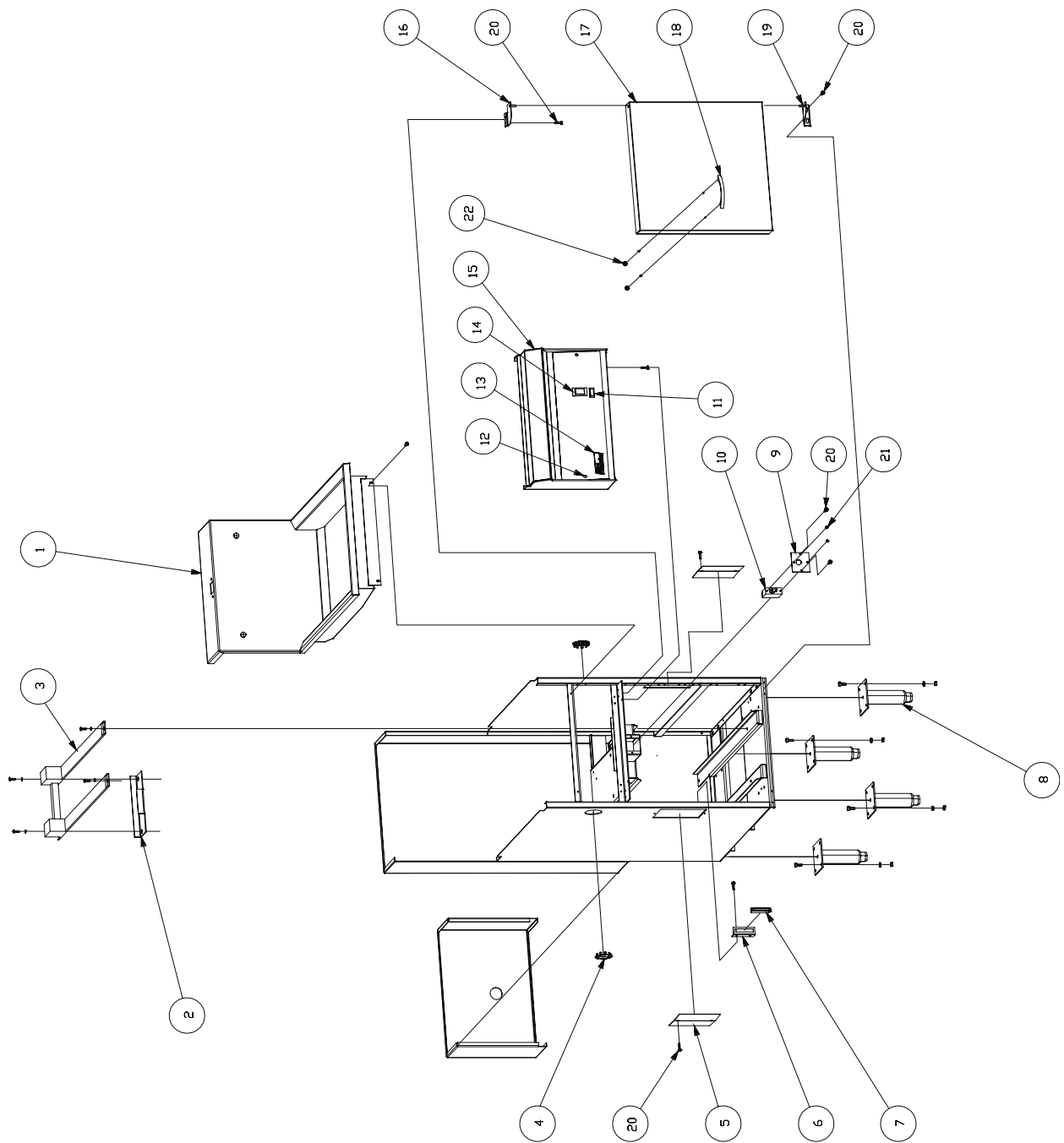


Figure 5-4 Frame-Cabinet / Electrical Assemblies With Components

Table 5-2 UFM Filter, Frame/Electrical Assembly

| Item Number | Pitco Frialator Part Number | Description                                 | Quantity Per Unit |
|-------------|-----------------------------|---|-------------------|
| 1           | B6621101                    | Filter Frame, Weldment                      | 1                 |
| 2           | A6683002                    | Filter, Cover Motor                         | 1                 |
| 3           | A6685702                    | Filter, Bracket Mounting Cover              | 1                 |
| 4           | A6684202                    | Filter, Cover Tubing                        | 1                 |
| 5           | A6684502                    | Filter, Cover Tubing Cap                    | 1                 |
| 6           | PP10741                     | Filter, QD SNP 23 Nipple                    | 1                 |
| 7           | A6683802                    | Filter, Guard Tubing Channel                | 1                 |
| 8           | A6683102                    | Filter, Panel, Switch                       | 1                 |
| 9           | PP10331                     | Lamp, 125V Green Rectangular                | 1                 |
| 10          | PP10735                     | Switch, Rocker DPST 15A, with Breaker       | 1                 |
| 11          | A6055801                    | Label, Overlay Filter Module                | 1                 |
| 12          | A7680402                    | Plate, Switch Pasta                         | 1                 |
| 13          | A6683302                    | Filter, Box Electrical Body                 | 1                 |
| 14          | P6071062                    | Caster, 2" With Top Plate                   | 4                 |
| 15          | P0011300                    | Screw, 10-24 x 3/8" Indent Hex              | 16                |
| 16          | PP10176                     | Nut, Center Lock 10-24                      | 16                |
| 17          | PP10147                     | Clip, Cable 0.375 ID                        | 2                 |
| 18          | PP10107                     | Bushing, Strain Relief                      | 1                 |
| 19          | B6717901                    | Wiring, Cord, Filter with Termination       | 1                 |
| 20          | P0093300                    | Nut, Hex (KEP) 1/4-20 ZN                    | 5                 |
| 21          | A6682802                    | Filter, Guide CA                            | 1                 |
| 22          | B6717101                    | Wiring, Cable Filter Assembly               | 1                 |
| 23          | PP10192                     | Bushing, Strain Relief 90                   | 2                 |
| 24          | PP10460                     | Switch, Rocket Circuit Breaker SPST 8A 125V | 1                 |
| 25          | PP10119                     | Label, Warning Motor Reset                  | 1                 |
| 26          | P6071490                    | Plug, Hole 7/8" Plated                      | 2                 |
| 27          | PP10692                     | Screw, 10-24 x 5/16" TH Phillips ZN         | 5                 |
| 28          | PP10752                     | Screw, 10-32 x 1/2" Thread Roller           | 18                |
| 29          | P0000100                    | Screw, 6-32 x 7/8" RH ZN                    | 2                 |
| 30          | P009100                     | Nut, Hex 6-32 ZN (KEP)                      | 2                 |
| 31          | P0075200                    | Screw, TEK 2 #8 x 1/2" SLF DR               | 1                 |
| 32          | P6071497                    | Plug, Hole 3/4" Plated                      | 1                 |
| 33          | B6622301                    | Hose Assembly With Quick Disconnect         | 1                 |

Revised 5/28/93

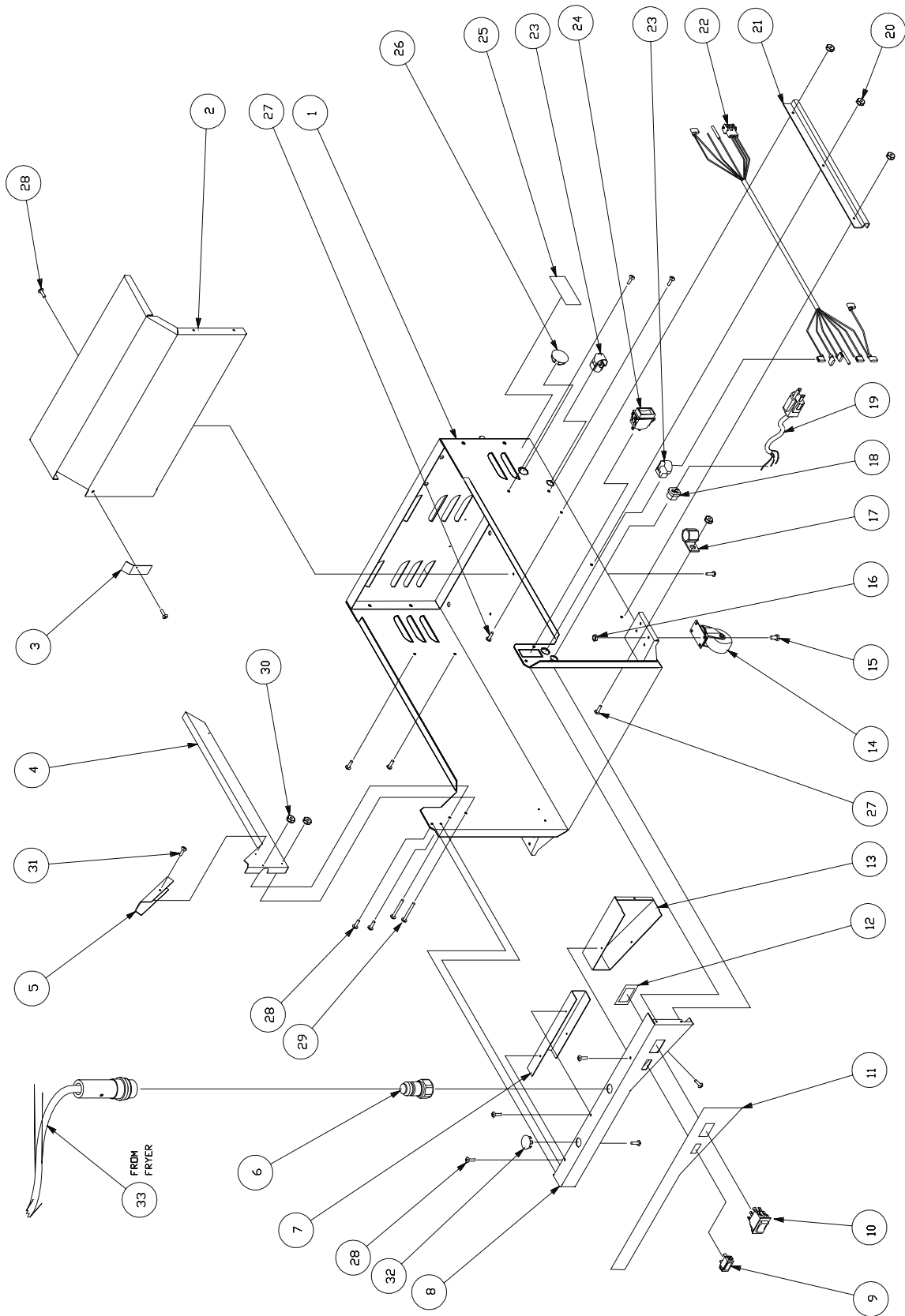


Figure 5-5 UFM Filter, Frame/Electrical Assembly

Table 5-3 UFM Filter, Pick-Up/Pan Assembly

| Item Number | Pitco Frialator Part Number | Description                                | Quantity Per Unit |
|-------------|-----------------------------|--|-------------------|
| 1           | B6621001                    | Filter Pan, Weldment                       | 1                 |
| 2           | B6620001                    | Filter, Rack                               | 1                 |
| 3           | B6617001                    | Filter, Screen Clip                        | 1                 |
| 4           | B6621202                    | Filter, Catch Crumb, Weldment              | 1                 |
| 5           | A6056001                    | Label, Filter Instruction - Pan            | 1                 |
| 6           | B6621301                    | Filter, Cover Pan, Weldment                | 1                 |
| 7           | P6071516                    | Handle, Door, 3" C to C                    | 1                 |
| 8           | A6681802                    | Filter, Coupling Top                       | 1                 |
| 9           | B6615301                    | Filter, Screen Inlet                       | 1                 |
| 10          | PP10409                     | O-Ring Viton 11/16" x .094" W              | 1                 |
| 11          | B6621601                    | Filter, Tube Suction, Weldment             | 1                 |
| 12          | PP10629                     | Ring, Retaining - Internal .875"           | 1                 |
| 13          | A6684601                    | Filter, Insulation Pick-Up                 | 1                 |
| 14          | P0062100                    | Screw, 1/4-20 x 3/8" Set                   | 2                 |
| 15          | P0007300                    | Screw, 8-32 x 1/4" Hex & N 2N              | 2                 |
| 16          | PP10613                     | Filter Paper, 18-1/2" x 20-1/2" Heavy Duty | 1                 |

Revised 5/28/93

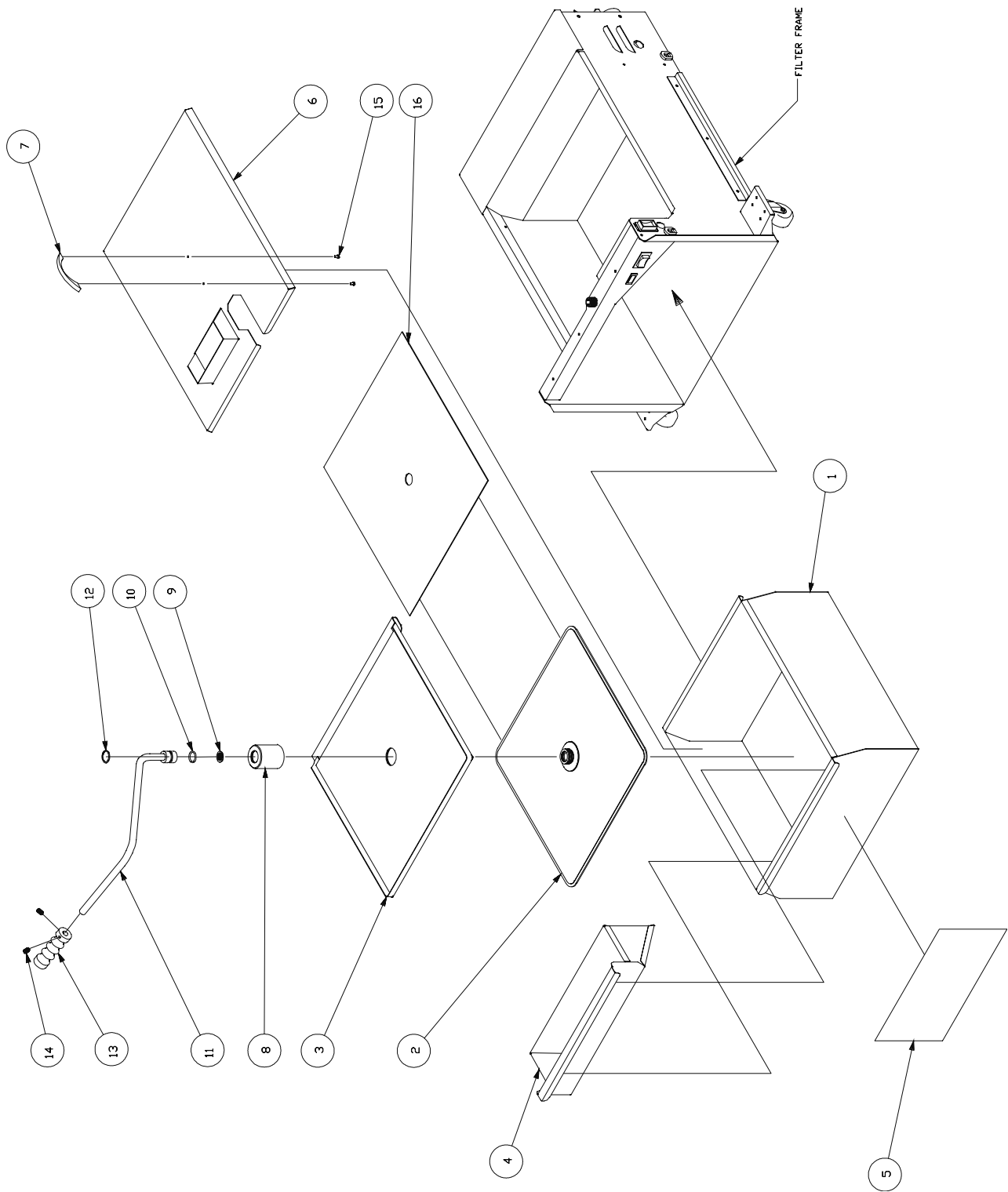


Figure 5-6 UFM Filter, Pick-Up/Pan Assembly

Table 5-4 UFM Filter, Motor / Return Assembly

| Item Number | Pitco Frialator Part Number | Description                            | Quantity Per Unit |
|-------------|-----------------------------|--|-------------------|
| 1           | PP10101                     | Pump/Motor 1/3 HP, 115/230V, 50/60Hz   | 1                 |
| 2           | PP10106                     | Fitting, Elbow Male 90 .50D x .5 NPT   | 2                 |
| 3           | A6682702                    | Filter, Tubing Out SS                  | 1                 |
| 4           | PP10731                     | Fitting, Elbow Male 90 .50D x .375 NPT | 1                 |
| 5           | B6621401                    | Filter, Tubing Pump - Inlet Weldment   | 1                 |
| 6           | PP10039                     | Heat Tape, 1/2" x 79" 110V 165 Watt    | 1                 |
| 7           | PP10111                     | O-Ring, Viton .50ID x .688 x .094W     | 2                 |
| 8           | A6685601                    | Filter, Insulator O-Ring Fitting       | 1                 |
| 9           | P0062100                    | Screw, 1/4-20 x 3/8" Set               | 1                 |
| 10          | B6717701                    | Wiring, Motor Harness                  | 1                 |
| 11          | PP10739                     | Thermostat, Snap Disc                  | 1                 |
| 12          | PP10687                     | Screw, 6-32 x 5/16" TH Phillips ZN     | 2                 |
| 13          | P009110                     | Nut, Hex (KEP) 6-32 ZN                 | 2                 |
| 14          | PP10738                     | Nut, Retaining Clip 5/16" - 18         | 1                 |
| 15          | P0144000                    | Nut, Hex 5/16" - 18 SST                | 2                 |
| 16          | P0115000                    | Screw, 5/16" - 18 x 3/4" HHC SSBB      | 3                 |

Revised 5/28/93

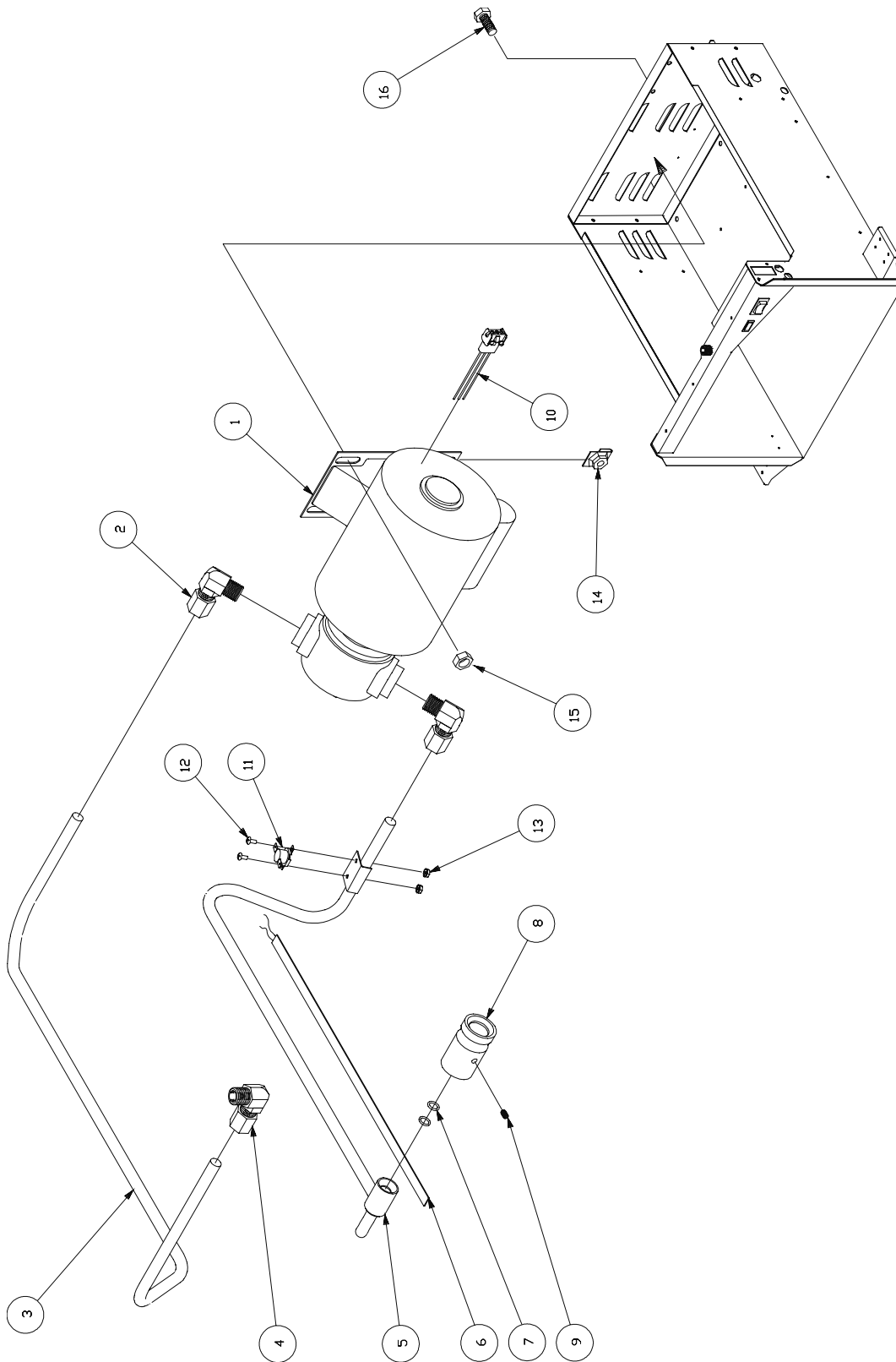


Figure 5-7 UFM Filter, Motor / Return Assembly



Table 5-5 Built-In Filter Pan With Components

| Item Number | Pitco Frialator Part Number | Description                 | Quantity Per Unit |
|-------------|-----------------------------|-----------------------------|-------------------|
| 1           | B6602001                    | Pan #14                     | 1                 |
|             | B6602101                    | Pan #18                     | 1                 |
| 2           | B6603001                    | Paper Retainer #14          | 1                 |
|             | B6603002                    | Paper Retainer #18          | 1                 |
| 3           | B6602401                    | Hose #14                    | 1                 |
|             | B6602402                    | Hose #18                    | 1                 |
| 4           | P6071123                    | Quick Disconnect, Male      | 1                 |
| 5           | P7037752-1                  | Elbow 90° 3/8 Street Plated | 1                 |
| 6           | A6641802                    | Handle #14                  | 2                 |
|             | A6641804                    | Handle #18                  | 2                 |
| 7           | P6072611                    | Paper Support Rack #14      | 1                 |
|             | P6072612                    | Paper Support Rack #18      | 1                 |
| 8           | P7037316-1                  | Stand Pipe #14              | 1                 |
|             | P7037320-1                  | Stand Pipe #18              | 1                 |
| 9           | P7037675                    | Elbow 90° 3/8 Plated        | 1                 |

Revised 5/28/93

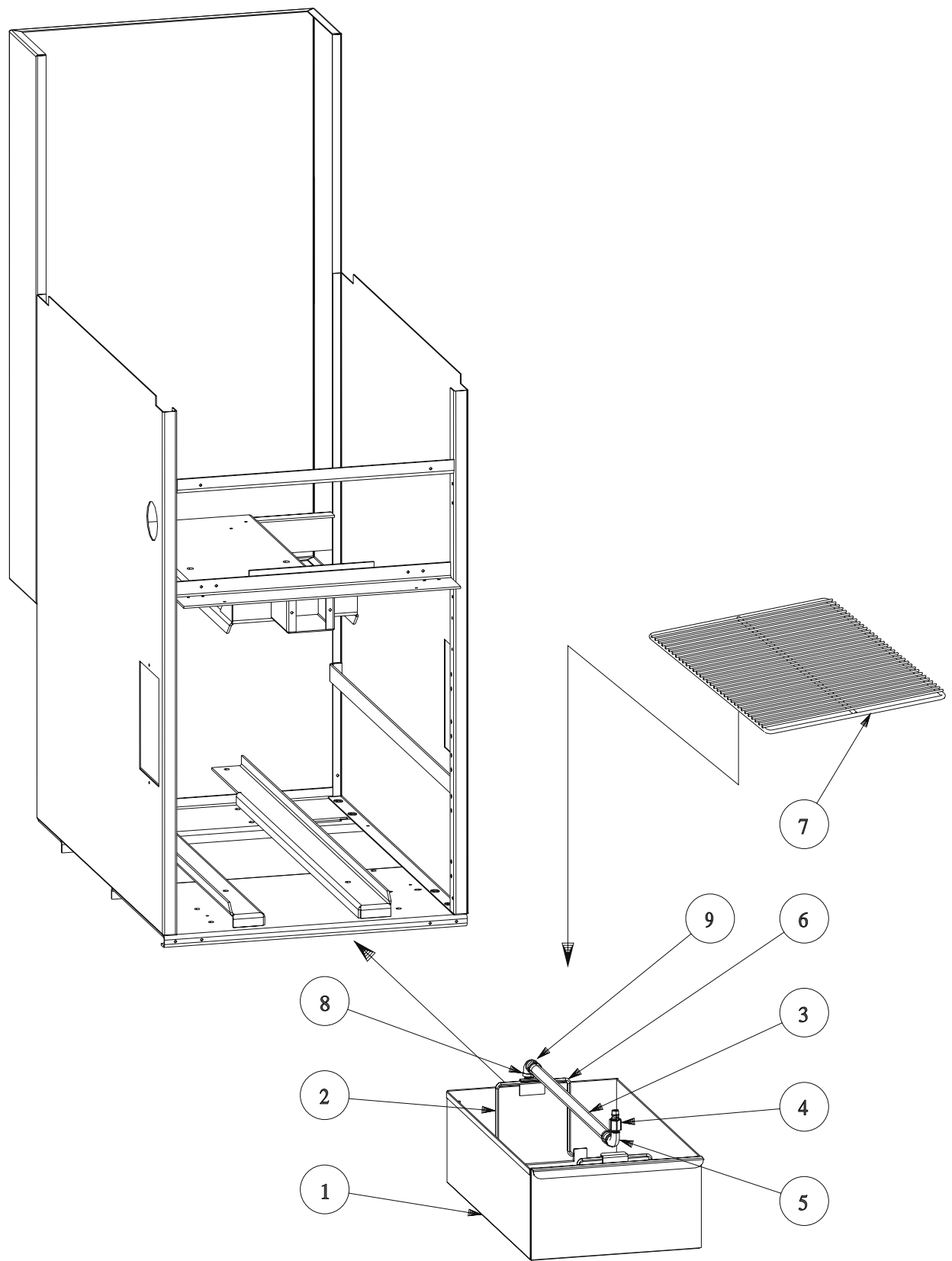


Figure 5-8 Built-In Filter Pan With Components

Table 5-6 Built-In Filter Piping With Components

| Item Number | Pitco Frialator Part Number | Description          | Quantity Per Unit |
|-------------|-----------------------------|----------------------|-------------------|
| 1           | P5046381                    | Pump and Motor       | 1                 |
| 2           | P6071530                    | Pump Only            | 1                 |
| 3           | P5046384                    | Motor Only           | 1                 |
| 4           | B7402241                    | Quick Disconnect     | 1                 |
| 5           | P0020600                    | Bolt 1/4 - 20 x 5/8" | 4                 |
| 6           | P0080650                    | Washer, Flat         | 8                 |
| 7           | P0093300                    | Nut, Keep            | 4                 |

Revised 5/28/93

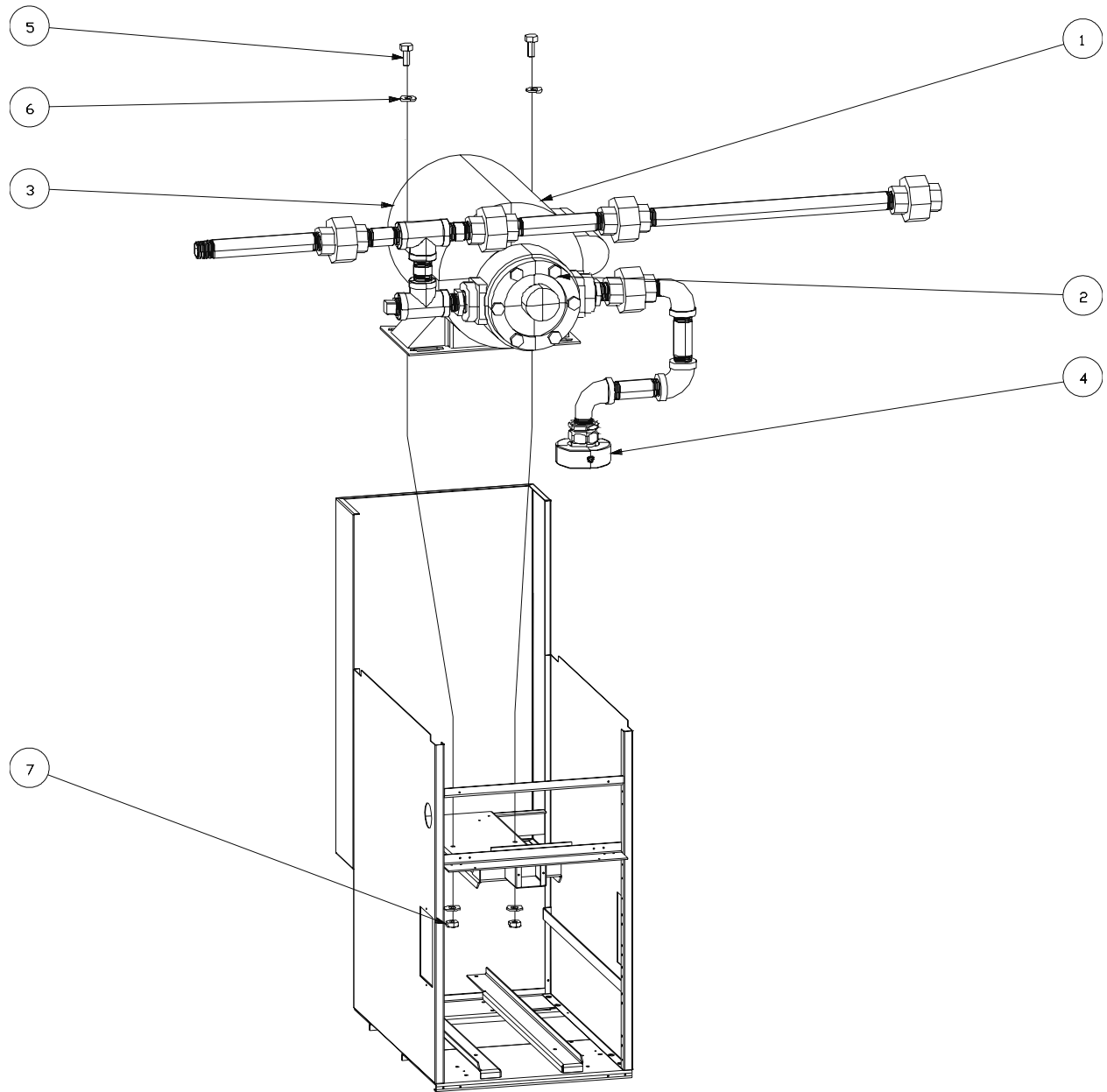


Figure 5-9 Built-In Filter Piping With Components

Table 5-7 Built-In Filter With Accessories

| Item Number | Pitco Frialator Part Number | Description                     | Quantity Per Unit |
|-------------|-----------------------------|---------------------------------|-------------------|
| 1           | P5044768                    | Food Warmer, Built-In           | 1                 |
|             | P5044760                    | Food Warmer, Free Standing      | 1                 |
| 2           | P6072155                    | Drain Screen #14                | 1                 |
|             | P6072156                    | Drain Screen #18                | 1                 |
| 3           | A5811202                    | Pan Liner #14                   | 1                 |
|             | A5811206                    | Pan Liner #18                   | 1                 |
| 4           | PP10733                     | Filter Powder, 120, 8oz Packets |                   |
| 5           | P6071371                    | Paper #14 Standard              |                   |
|             | PP10612                     | Paper #14 Heavy Duty            |                   |
|             | P6071373                    | Paper #18 Standard              |                   |
|             | PP10606                     | Paper #18 Heavy Duty            |                   |
| 6           | A1100802                    | Basket Hanger #14               | 1                 |
|             | A1100804                    | Basket Hanger #18               | 1                 |

Revised 5/28/93

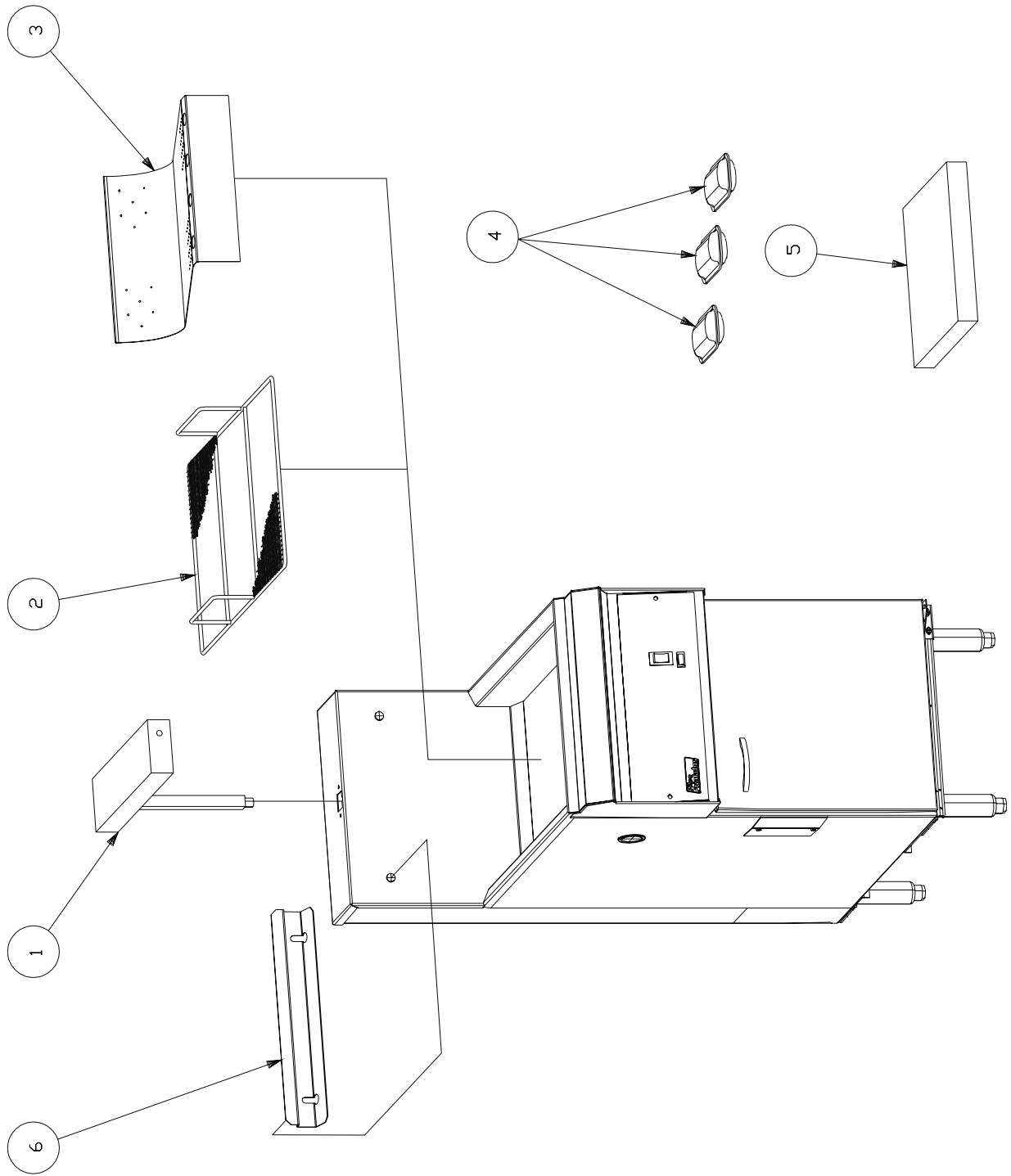


Figure 5-10 Built-In Filter With Accessories

## ALPHABETICAL PART LIST

| Part Description                                | Models Used on        | Pitco Frialator Part No. |
|---|-----------------------|--------------------------|
| BASKET HANGER, STAINLESS STEEL                  | E14,E14B              | A1100406                 |
| BASKET HANGER, STAINLESS STEEL                  | E18                   | A1100408                 |
| BASKET HANGER, STAINLESS STEEL                  | E18B                  | A1101002                 |
| CASTER (4/FILTER)                               | ALL UFM               | P6071062                 |
| CASTER ASSEMBLY 7" WITH LOCKING DEVICE          | ALL UFM               | PP10811                  |
| CASTER ASSEMBLY 7" WITHOUT LOCKING DEVICE       | ALL UFM               | PP10810                  |
| CASTER WITH LOCK 6"                             | ALL                   | PP10809                  |
| CASTER WITHOUT LOCK 6"                          | ALL                   | PP10808                  |
| CHANNEL STRIP #14-2                             | E14                   | A1900104                 |
| CHANNEL STRIP #18-2                             | E14                   | A1900114                 |
| CIRCUIT BREAKER, 10 AMP                         | ALL BIF               | PP10104                  |
| CIRCUIT BREAKER, 4 AMP, DOUBLE POLE             | 240V UFM              | PP10470                  |
| CLAMP, BAND (FILTER)                            | ALL                   | PP10034                  |
| CLEAN OUT ROD                                   | ALL                   | A3301001                 |
| CLIP, SCREEN                                    | SF50,SF65             | B6603601                 |
| CONTACTOR, DEFINITE PURPOSE, 40A, 24 V, 3PST-NO | ALL                   | PP10560                  |
| CONTACTOR, MERCURY-40AMP 24 VAC 5PST-NO         | ALL                   | PP10553                  |
| CORD, PLUG-RETRACTILE 16-3 SJO                  | E14,E18UFM            | PP10439                  |
| COUNTER BALANCE BEARING ASSEMBLY                | E14,E14B,<br>E18,E18B | B7361701                 |
| COUNTER BALANCE HINGE BRACKET                   | E14                   | B7361803                 |
| COUNTER BALANCE HINGE BRACKET                   | E14B,E18              | B7361804                 |
| COVER SCREWS                                    | ALL                   | P0101200                 |
| CRUMB CATCH                                     | SF50,SF65             | B6601802                 |
| CRUMB CATCH BASKET                              | ALL BIF               | P6072165                 |
| CRUMB CATCH RETAINER                            | E14 BIF               | B6601901                 |
| CRUMB CATCH RETAINER                            | E18 BIF               | B6601902                 |
| DOOR HANDLE                                     | ALL                   | P6071516                 |
| DOOR MAGNET                                     | ALL                   | P6071300                 |
| DOOR, UNIVERSAL, STAINLESS STEEL OUTSIDE        | E14,E14B              | B2301205                 |
| DOOR, UNIVERSAL, STAINLESS STEEL OUTSIDE        | E18,E18B              | B2301206                 |
| DOOR, UNIVERSAL, STAINLESS STEEL OUTSIDE        | E12                   | B2301204                 |
| DRAIN OUTLET NIPPLE, 1-1/4"                     | E14,E14B,<br>E18      | A2502503                 |
| DRAIN VALVE                                     | E12                   | P6071769                 |
| DRAIN VALVE, 1-1/2" FULL PORT                   | E18B                  | P6071770                 |
| DRAIN VALVE, 1-1/4" STANDARD                    | E14,E14B,<br>E18,E18B | P6071785                 |
| ELEMENT HOUSING BOX COVER                       | E14,E14B              | A2603206                 |
| ELEMENT HOUSING BOX COVER                       | E18,E18B              | A2603208                 |
| ELEMENT RACK                                    | E12                   | B2800703-1               |
| ELEMENT RACK                                    | E14B,E14              | B2800706-1               |
| ELEMENT RACK                                    | E18B                  | B2800710-1               |
| ELEMENT RACK                                    | E18                   | B2800708-1               |

## ALPHABETICAL PART LIST (Continued)

| Part Description                        | Models<br>Used on | Pitco Frialator<br>Part No. |
|---|-------------------|-----------------------------|
| ELEMENT RACK                            | E14X              | B2800704-1                  |
| ELEMENT WIRES                           | ALL               | SPECIAL<br>ORDER            |
| ENTRANCE BOX COVER                      | ALL               | A2900601                    |
| FAT CONTAINER                           | ALL               | SPECIAL<br>ORDER            |
| FEMALE QUICK DISCONNECT (BLACK DONUT)   | SF50,SF65         | PP10113                     |
| FILTER CATCH, CRUMB, WELDMENT           | SF50A,SF65A       | B6621202                    |
| FILTER COVER, PAN, WELDMENT             | SF50A             | B6621301                    |
| FILTER COVER, PAN, WELDMENT             | SF65A             | B6621302                    |
| FILTER ENVELOPE 18" X 20-1/2"           | ALL UFM           | PP10613                     |
| FILTER HOSE UFM EXCEPT RPB              | SF50A,SF65A       | B6622001                    |
| FILTER HOSE UFM FOR RPB                 | SF50A,SF65A       | B6622002                    |
| FILTER INSULATION PICK-UP               | SF50A,SF65A       | A6684601                    |
| FILTER INSULATOR TOP                    | SF50A,SF65A       | A6685401                    |
| FILTER PAN, WELDMENT                    | SF50A             | B6621001                    |
| FILTER PAN, WELDMENT                    | SF65A             | B6621002                    |
| FILTER PAPER 13-1/2" X 24"              | E7-E14 BIF        | P6071371                    |
| FILTER PAPER 17-1/2" X 28"              | E18-E34 BIF       | P6071373                    |
| FILTER PAPER, HEAVY DUTY, 13-1/2" X 24" | E7-E14 BIF        | PP10612                     |
| FILTER PAPER, HEAVY DUTY, 17-1/2" X 28" | E18-E34 BIF       | PP10606                     |
| FILTER QD SNP 23 NIPPLE                 | SF50A,SF65A       | PP10741                     |
| FILTER QUICK DISCONNECT ADAPTER         | SF50,SF65         | B6603901                    |
| FILTER RACK                             | SF50A,SF65A       | B6620001                    |
| FILTER RETURN INSULATION DISCONNECT     | SF50A,SF65A       | B6622801                    |
| FILTER SCREEN CLIP                      | SF50A,SF65A       | B6617001                    |
| FILTER, TUBE SUCTION, COMPLETE          | SF50A,SF65A       | B6621701                    |
| FUSE 1 AMP SLOW BLOW GLASS              | ALL               | PP10122                     |
| FUSE 40 AMP                             | E14,E14B,E18      | P5045701                    |
| FUSE 50 AMP                             | E18B              | P5045702                    |
| FUSE HOLDER                             | ALL               | P5045792                    |
| GASKET, DRAIN LINE (SLEEVE)             | ALL               | PP10032                     |
| GASKET, DRAIN LINE (SLEEVE)             | ALL               | PP10032                     |
| GROUND CLAMP                            | ALL               | P5045241                    |
| HANDLE, VALVE 3/8 BALL, COATED BLUE     | ALL               | PP10049                     |
| HANDLE, VALVE 3/8 BALL, COATED RED      | ALL               | PP10048                     |
| HANDLE, VALVE 3/8 BALL, COATED YELLOW   | ALL               | PP10050                     |
| HEAT TAPE, 1/2" X 79", 110 VAC, 165 W   | SF50,SF65         | PP10039                     |
| HEAT TAPE, 110 VAC, 120 W               | SF50,SF65         | PP10194                     |
| HEATER, SILICONE, 120 VAC, 250 W        | SF50,SF65         | PP10099                     |
| HEATING ELEMENT                         | E12-208V          | P5046923                    |
| HEATING ELEMENT                         | E12-240V          | P5046924                    |
| HEATING ELEMENT                         | E12-480V          | P5046951                    |
| HEATING ELEMENT                         | E18-480V          | P5046900                    |



## ALPHABETICAL PART LIST (Continued)

| Part Description                               | Models<br>Used on | Pitco Frialator<br>Part No. |
|--|-------------------|-----------------------------|
| HEATING ELEMENT                                | E18-208V          | P5046901                    |
| HEATING ELEMENT                                | E18-240V          | P5046902                    |
| HEATING ELEMENT                                | E18B-208V         | P5046903                    |
| HEATING ELEMENT                                | E18B-240V         | P5046904                    |
| HEATING ELEMENT                                | E18B-480V         | P5046952                    |
| HEATING ELEMENT                                | E14-208V          | P5046920                    |
| HEATING ELEMENT                                | E14-240V          | P5046921                    |
| HEATING ELEMENT                                | E14-480V          | P5046919                    |
| HEATING ELEMENT                                | E14B,E7-208V      | P5046915                    |
| HEATING ELEMENT                                | E14B,E7-240V      | P5046916                    |
| HEATING ELEMENT                                | E14B,E7-480V      | P5046960                    |
| HIGH LIMIT BULB CLAMP                          | ALL               | B7370402                    |
| HIGH LIMIT CAPILLARY CLAMP                     | ALL               | A1400902                    |
| HIGH LIMIT COVER                               | ALL               | B7370101                    |
| HIGH LIMIT SWITCH                              | ALL               | P5047216                    |
| HINGE, DOOR-BOTTOM LH                          | ALL               | B7230301                    |
| HINGE, DOOR-BOTTOM RH                          | ALL               | B7230302                    |
| HINGE, DOOR-TOP LH                             | ALL               | B7230201                    |
| HINGE, DOOR-TOP, RH                            | ALL               | B7230202                    |
| HOSE ASSEMBLY WITH QUICK DISCONNECT            | SF50A,SF65A       | B6622301                    |
| INTERLOCK SWITCH                               | ALL               | P5047170                    |
| INTERLOCK SWITCH COVER                         | ALL               | A2601502                    |
| KNOB, 200-400 OFF ELECTRIC                     | ALL               | PP10539                     |
| LAMP, 125 VAC AMBER RECTANGULAR                | ALL UFM           | PP10082                     |
| LAMP, 125 VAC GREEN RECTANGULAR                | SF50A,SF65A       | PP10331                     |
| LEG, ADJUSTABLE 6"                             | ALL               | B3900909                    |
| LEG, ADJUSTABLE 8"                             | ALL               | B7472909                    |
| LEG, ADJUSTABLE, 7"                            | ALL               | B3900408                    |
| LOCK ARM TIP                                   | ALL               | P5045161                    |
| MODULE 1 PROD 14/18-184 NAT                    | E14,E18           | P5044851                    |
| MODULE 1 PROD 14/18-184 REBUILT                | E14,E18           | P5044852                    |
| MODULE 1 PROD 7-184 NAT                        | E7                | P5044856                    |
| MODULE 1 PROD 7-184 REBUILT                    | E7                | P5044857                    |
| MODULE 8 PROD 14/18-884 NAT                    | E14,E18           | P5044850                    |
| MODULE 8 PROD 14/18-884 REBUILT                | E14,E18           | P5044854                    |
| MODULE 8 PROD 7-884 NAT                        | E7                | P5044855                    |
| MODULE 8 PROD 7-884 REBUILT                    | E7                | P5044853                    |
| O-RING, VITON .50 ID X .688 X .094W            | SF50A, SF65A      | PP10111                     |
| PICKUP QUICK DISCONNECT, FEMALE, NO/RING       | SF50,SF65         | P6071122                    |
| PICKUP QUICK DISCONNECT, MALE                  | SF50,SF65         | P6071123                    |
| PLUG - 9 POLE MALE                             | ALL               | P5045826                    |
| PROBE STANDOFF CLAMP                           | ALL               | B7370403                    |
| PUMP/MOTOR ASSEMBLY, 115/230 VAC               | ALL BIF           | P5046381                    |
| PUMP/MOTOR ASSEMBLY, 115/230 VAC, 60HZ, 1/3 HP | ALL UFM           | PP10101                     |

## ALPHABETICAL PART LIST (Continued)

| Part Description                                 | Models Used on | Pitco Frialator Part No. |
|--|----------------|--------------------------|
| RECEPTACLE, 3 PRONG, 15A, 125VAC                 | ALL UFM        | PP10103                  |
| RETURN HOSE NEW STYLE SF50                       | SF50           | B6602803                 |
| RETURN HOSE NEW STYLE SF65                       | SF65           | B6602804                 |
| SPRING   | ALL            | P6071636                 |
| SQUARE BASKETS, FINE MESH                        | E12            | P6072124                 |
| SQUARE BASKETS, FINE MESH                        | E14,E14B       | P6072144                 |
| SQUARE BASKETS, FINE MESH                        | E18            | P6072187                 |
| SQUARE BASKETS, FINE MESH                        | E12            | P6072124                 |
| SQUARE BASKETS, REGULAR MESH                     | E12            | P6072123                 |
| SQUARE BASKETS, REGULAR MESH                     | E14,E14B       | P6072143                 |
| SQUARE BASKETS, REGULAR MESH                     | E18            | P6072183                 |
| SUCTION TUBE                                     | SF50,SF65      | B6603801                 |
| SUPPORT RACK, TOP                                | SF50,SF65      | B6603701                 |
| SWITCH , ROCKER, DPDT (ON-OFF-ON)                | SF50,SF65      | PP10098                  |
| SWITCH, ROCKER CIRCUIT BREAKER SPST, 8A, 125 VAC | SF50A,SF65A    | PP10460                  |
| SWITCH, ROCKER DPST 15A, WITH BREAKER            | SF50A,SF65A    | PP10735                  |
| TERMINAL BLOCK (TB2)                             | ALL            | P5047305                 |
| TERMINAL BLOCK (TB3)                             | ALL            | P5047303                 |
| THERMOSTAT KNOB                                  | ALL            | P6071270                 |
| THERMOSTAT PROBE                                 | E12,E14 ALL    |                          |
|  | E18            | P6700602                 |
| THERMOSTAT, SNAP DISK                            | SF50A,SF65A    | PP10739                  |
| TWIN BASKETS, FINE MESH                          | E12            | P6072126                 |
| TWIN BASKETS, FINE MESH                          | E14,E14B       | P6072146                 |
| TWIN BASKETS, FINE MESH                          | E18            | P6072188                 |
| TWIN BASKETS, REGULAR MESH                       | E12            | P6072125                 |
| TWIN BASKETS, REGULAR MESH                       | E14,E14B       | P6072145                 |
| TWIN BASKETS, REGULAR MESH                       | E18            | P6072184                 |
| VALVE, BALL 3/8" PLTD W/O HANDLE                 | ALL            | P6071780                 |

## NUMERICAL PART LIST

| Pitco Frialator<br>Part No. | Part Description                         | Models<br>Used on |
|-----------------------------|--|-------------------|
| A1100406                    | BASKET HANGER, STAINLESS STEEL           | E14,E14B          |
| A1100408                    | BASKET HANGER, STAINLESS STEEL           | E18               |
| A1101002                    | BASKET HANGER, STAINLESS STEEL           | E18B              |
| A1400902                    | HIGH LIMIT CAPILLARY CLAMP               | ALL               |
| A1900104                    | CHANNEL STRIP #14-2                      | E14               |
| A1900114                    | CHANNEL STRIP #18-2                      | E14               |
| A2502503                    | DRAIN OUTLET NIPPLE, 1-1/4"              | E14,E14B,E18      |
| A2601502                    | INTERLOCK SWITCH COVER                   | ALL               |
| A2603206                    | ELEMENT HOUSING BOX COVER                | E14,E14B          |
| A2603208                    | ELEMENT HOUSING BOX COVER                | E18,E18B          |
| A2900601                    | ENTRANCE BOX COVER                       | ALL               |
| A3301001                    | CLEAN OUT ROD                            | ALL               |
| A6684601                    | FILTER INSULATION PICK-UP                | SF50A,SF65A       |
| A6685401                    | FILTER INSULATOR TOP                     | SF50A,SF65A       |
| B2301204                    | DOOR, UNIVERSAL, STAINLESS STEEL OUTSIDE | E12               |
| B2301205                    | DOOR, UNIVERSAL, STAINLESS STEEL OUTSIDE | E14,E14B          |
| B2301206                    | DOOR, UNIVERSAL, STAINLESS STEEL OUTSIDE | E18,E18B          |
| B2800703-1                  | ELEMENT RACK                             | E12               |
| B2800704-1                  | ELEMENT RACK                             | E14X              |
| B2800706-1                  | ELEMENT RACK                             | E14B,E14          |
| B2800708-1                  | ELEMENT RACK                             | E18               |
| B2800710-1                  | ELEMENT RACK                             | E18B              |
| B3900408                    | LEG, ADJUSTABLE, 7"                      | ALL               |
| B3900909                    | LEG, ADJUSTABLE 6"                       | ALL               |
| B6601802                    | CRUMB CATCH                              | SF50,SF65         |
| B6601901                    | CRUMB CATCH RETAINER                     | E14 BIF           |
| B6601902                    | CRUMB CATCH RETAINER                     | E18 BIF           |
| B6602803                    | RETURN HOSE NEW STYLE SF50               | SF50              |
| B6602804                    | RETURN HOSE NEW STYLE SF65               | SF65              |
| B6603601                    | CLIP, SCREEN                             | SF50,SF65         |
| B6603701                    | SUPPORT RACK, TOP                        | SF50,SF65         |
| B6603801                    | SUCTION TUBE                             | SF50,SF65         |
| B6603901                    | FILTER QUICK DISCONNECT ADAPTER          | SF50,SF65         |
| B6617001                    | FILTER SCREEN CLIP                       | SF50A,SF65A       |
| B6620001                    | FILTER RACK                              | SF50A,SF65A       |
| B6621001                    | FILTER PAN, WELDMENT                     | SF50A             |
| B6621002                    | FILTER PAN, WELDMENT                     | SF65A             |
| B6621202                    | FILTER CATCH, CRUMB, WELDMENT            | SF50A,SF65A       |
| B6621301                    | FILTER COVER, PAN, WELDMENT              | SF50A             |
| B6621302                    | FILTER COVER, PAN, WELDMENT              | SF65A             |
| B6621701                    | FILTER, TUBE SUCTION, COMPLETE           | SF50A,SF65A       |
| B6622001                    | FILTER HOSE UFM EXCEPT RPB               | SF50A,SF65A       |
| B6622002                    | FILTER HOSE UFM FOR RPB                  | SF50A,SF65A       |

## NUMERICAL PART LIST (Continued)

| Pitco Frialator<br>Part No. | Part Description                    | Models<br>Used on     |
|-----------------------------|-------------------------------------|-----------------------|
| B6622301                    | HOSE ASSEMBLY WITH QUICK DISCONNECT | SF50A,SF65A           |
| B6622801                    | FILTER RETURN INSULATION DISCONNECT | SF50A,SF65A           |
| B7230201                    | HINGE, DOOR-TOP LH                  | ALL                   |
| B7230202                    | HINGE, DOOR-TOP, RH                 | ALL                   |
| B7230301                    | HINGE, DOOR-BOTTOM LH               | ALL                   |
| B7230302                    | HINGE, DOOR-BOTTOM RH               | ALL                   |
| B7361701                    | COUNTER BALANCE BEARING ASSEMBLY    | E14,E14B,<br>E18,E18B |
| B7361803                    | COUNTER BALANCE HINGE BRACKET       | E14                   |
| B7361804                    | COUNTER BALANCE HINGE BRACKET       | E14B,E18              |
| B7370101                    | HIGH LIMIT COVER                    | ALL                   |
| B7370402                    | HIGH LIMIT BULB CLAMP               | ALL                   |
| B7370403                    | PROBE STANDOFF CLAMP                | ALL                   |
| B7472909                    | LEG, ADJUSTABLE 8"                  | ALL                   |
| P0101200                    | COVER SCREWS                        | ALL                   |
| P5044850                    | MODULE 8 PROD 14/18-884 NAT         | E14,E18               |
| P5044851                    | MODULE 1 PROD 14/18-184 NAT         | E14,E18               |
| P5044852                    | MODULE 1 PROD 14/18-184 REBUILT     | E14,E18               |
| P5044853                    | MODULE 8 PROD 7-884 REBUILT         | E7                    |
| P5044854                    | MODULE 8 PROD 14/18-884 REBUILT     | 14,18                 |
| P5044855                    | MODULE 8 PROD 7-884 NAT             | E7                    |
| P5044856                    | MODULE 1 PROD 7-184 NAT             | E7                    |
| P5044857                    | MODULE 1 PROD 7-184 REBUILT         | E7                    |
| P5045161                    | LOCK ARM TIP                        | ALL                   |
| P5045241                    | GROUND CLAMP                        | ALL                   |
| P5045701                    | FUSE 40 AMP                         | E14,E14B,E18          |
| P5045702                    | FUSE 50 AMP                         | E18B                  |
| P5045792                    | FUSE HOLDER                         | ALL                   |
| P5045826                    | PLUG - 9 POLE MALE                  | ALL                   |
| P5046381                    | PUMP/MOTOR ASSEMBLY, 115/230 VAC    | ALL BIF               |
| P5046900                    | HEATING ELEMENT                     | E18-480V              |
| P5046901                    | HEATING ELEMENT                     | E18-208V              |
| P5046902                    | HEATING ELEMENT                     | E18-240V              |
| P5046903                    | HEATING ELEMENT                     | E18B-208V             |
| P5046904                    | HEATING ELEMENT                     | E18B-240V             |
| P5046915                    | HEATING ELEMENT                     | E14B,E7-208V          |
| P5046916                    | HEATING ELEMENT                     | E14B,E7-240V          |
| P5046919                    | HEATING ELEMENT                     | E14-480V              |
| P5046920                    | HEATING ELEMENT                     | E14-208V              |
| P5046921                    | HEATING ELEMENT                     | E14-240V              |
| P5046923                    | HEATING ELEMENT                     | E12-208V              |
| P5046924                    | HEATING ELEMENT                     | E12-240V              |
| P5046951                    | HEATING ELEMENT                     | E12-480V              |
| P5046952                    | HEATING ELEMENT                     | E18B-480V             |

## NUMERICAL PART LIST (Continued)

| Pitco Frialator<br>Part No. | Part Description                         | Models<br>Used on     |
|-----------------------------|--|-----------------------|
| P5046960                    | HEATING ELEMENT                          | E14B,E7-480V          |
| P5047170                    | INTERLOCK SWITCH                         | ALL                   |
| P5047216                    | HIGH LIMIT SWITCH                        | ALL                   |
| P5047303                    | TERMINAL BLOCK (TB3)                     | ALL                   |
| P5047305                    | TERMINAL BLOCK (TB2)                     | ALL                   |
| P6071062                    | CASTER (4/FILTER)                        | ALL UFM               |
| P6071122                    | PICKUP QUICK DISCONNECT, FEMALE, NO/RING | SF50,SF65             |
| P6071123                    | PICKUP QUICK DISCONNECT, MALE            | SF50,SF65             |
| P6071270                    | THERMOSTAT KNOB                          | ALL                   |
| P6071300                    | DOOR MAGNET                              | ALL                   |
| P6071371                    | FILTER PAPER 13-1/2" X 24"               | E7-E14 BIF            |
| P6071373                    | FILTER PAPER 17-1/2" X 28"               | E18-E34 BIF           |
| P6071516                    | DOOR HANDLE                              | ALL                   |
| P6071636                    | SPRING                                   | ALL                   |
| P6071769                    | DRAIN VALVE                              | E12                   |
| P6071770                    | DRAIN VALVE, 1-1/2" FULL PORT            | E18B                  |
| P6071780                    | VALVE, BALL 3/8" PLTD W/O HANDLE         | ALL                   |
| P6071785                    | DRAIN VALVE, 1-1/4" STANDARD             | E14,E14B,<br>E18,E18B |
| P6072123                    | SQUARE BASKETS, REGULAR MESH             | E12                   |
| P6072124                    | SQUARE BASKETS, FINE MESH                | E12                   |
| P6072124                    | SQUARE BASKETS, FINE MESH                | E12                   |
| P6072125                    | TWIN BASKETS, REGULAR MESH               | E12                   |
| P6072126                    | TWIN BASKETS, FINE MESH                  | E12                   |
| P6072143                    | SQUARE BASKETS, REGULAR MESH             | E14,E14B              |
| P6072144                    | SQUARE BASKETS, FINE MESH                | E14,E14B              |
| P6072145                    | TWIN BASKETS, REGULAR MESH               | E14,E14B              |
| P6072146                    | TWIN BASKETS, FINE MESH                  | E14,E14B              |
| P6072165                    | CRUMB CATCH BASKET                       | ALL BIF               |
| P6072183                    | SQUARE BASKETS, REGULAR MESH             | E18                   |
| P6072184                    | TWIN BASKETS, REGULAR MESH               | E18                   |
| P6072187                    | SQUARE BASKETS, FINE MESH                | E18                   |
| P6072188                    | TWIN BASKETS, FINE MESH                  | E18                   |
| P6700602                    | THERMOSTAT PROBE                         | E12,E14<br>ALL,E18    |
| PP10032                     | GASKET, DRAIN LINE (SLEEVE)              | ALL                   |
| PP10032                     | GASKET, DRAIN LINE (SLEEVE)              | ALL                   |
| PP10034                     | CLAMP, BAND (FILTER)                     | ALL                   |
| PP10039                     | HEAT TAPE, 1/2" X 79", 110 VAC, 165 W    | SF50,SF65             |
| PP10048                     | HANDLE, VALVE 3/8 BALL, COATED RED       | ALL                   |
| PP10049                     | HANDLE, VALVE 3/8 BALL, COATED BLUE      | ALL                   |
| PP10050                     | HANDLE, VALVE 3/8 BALL, COATED YELLOW    | ALL                   |
| PP10082                     | LAMP, 125 VAC AMBER RECTANGULAR          | ALL UFM               |
| PP10098                     | SWITCH , ROCKER, DPDT (ON-OFF-ON)        | SF50,SF65             |

## NUMERICAL PART LIST (Continued)

| Pitco Frialator<br>Part No. | Part Description                                 | Models<br>Used on |
|-----------------------------|--|-------------------|
| PP10099                     | HEATER, SILICONE, 120 VAC, 250 W                 | SF50,SF65         |
| PP10101                     | PUMP/MOTOR ASSEMBLY, 115/230 VAC, 60HZ, 1/3 HP   | ALL UFM           |
| PP10103                     | RECEPTACLE, 3 PRONG, 15A, 125VAC                 | ALL UFM           |
| PP10104                     | CIRCUIT BREAKER, 10 AMP                          | ALL BIF           |
| PP10111                     | O-RING, VITON .50 ID X .688 X .094W              | SF50A, SF65A      |
| PP10113                     | FEMALE QUICK DISCONNECT (BLACK DONUT)            | SF50,SF65         |
| PP10122                     | FUSE 1 AMP SLOW BLOW GLASS                       | ALL               |
| PP10194                     | HEAT TAPE, 110 VAC, 120 W                        | SF50,SF65         |
| PP10331                     | LAMP, 125 VAC GREEN RECTANGULAR                  | SF50A,SF65A       |
| PP10439                     | CORD, PLUG-RETRACTILE 16-3 SJO                   | 14,18UFM          |
| PP10460                     | SWITCH, ROCKER CIRCUIT BREAKER SPST, 8A, 125 VAC | SF50A,SF65A       |
| PP10470                     | CIRCUIT BREAKER, 4 AMP, DOUBLE POLE              | 240V UFM          |
| PP10539                     | KNOB, 200-400 OFF ELECTRIC                       | ALL               |
| PP10553                     | CONTACTOR, MERCURY-40AMP 24 VAC 5PST-NO          | ALL               |
| PP10560                     | CONTACTOR, DEFINITE PURPOSE 40AMP 24 VAC 3PST-NO | ALL               |
| PP10606                     | FILTER PAPER, HEAVY DUTY, 17-1/2" X 28"          | E18-E34 BIF       |
| PP10612                     | FILTER PAPER, HEAVY DUTY, 13-1/2" X 24"          | E7-E14 BIF        |
| PP10613                     | FILTER ENVELOPE 18" X 20-1/2"                    | ALL UFM           |
| PP10735                     | SWITCH, ROCKER DPST 15A, WITH BREAKER            | SF50A,SF65A       |
| PP10739                     | THERMOSTAT, SNAP DISK                            | SF50A,SF65A       |
| PP10741                     | FILTER QD SNP 23 NIPPLE                          | SF50A,SF65A       |
| PP10808                     | CASTER WITHOUT LOCK 6"                           | ALL               |
| PP10809                     | CASTER WITH LOCK 6"                              | ALL               |
| PP10810                     | CASTER ASSEMBLY 7" WITHOUT LOCKING DEVICE        | ALL UFM           |
| PP10811                     | CASTER ASSEMBLY 7" WITH LOCKING DEVICE           | ALL UFM           |
| SPECIAL ORDER               | ELEMENT WIRES                                    | ALL               |
| SPECIAL ORDER               | FAT CONTAINER                                    | ALL               |



In the event of problems with or questions about your order, please contact the Pitco Frialator factory from 8:00 a.m. - 5:00 p.m., Eastern Standard Time, Monday through Friday:

(603)225-6684 World Wide

In the event of problems with or questions about your equipment, please contact the Pitco Frialator Authorized Service and Parts representative (ASAP) covering your area, through the National Service Network at: (603)-225-6684 24 hours