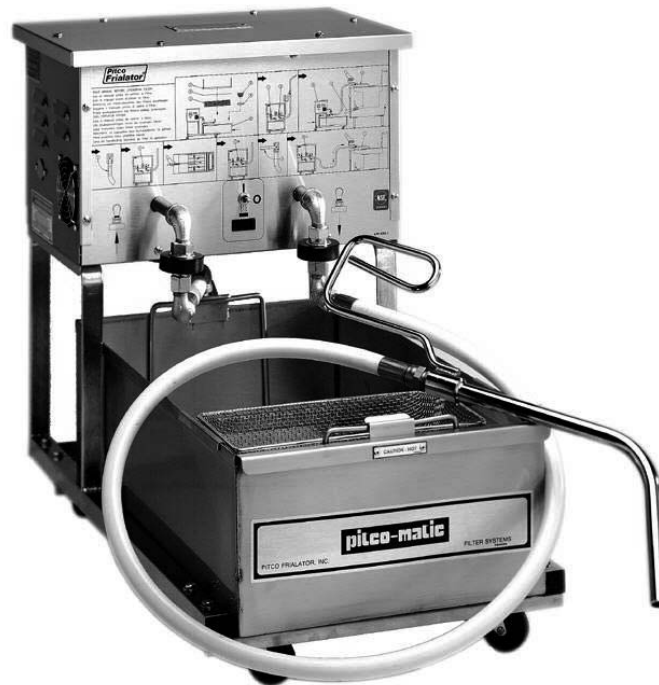




Parts Manual Covering Model P14



WARNING

DO NOT store or use gasoline or other flammable vapors and liquids in the vicinity of this or any other appliance.

WARNING

Improper installation, alteration, adjustment, service or maintenance can cause property damage, injury or death. Read the installation, operating and maintenance instructions thoroughly before installing or servicing this appliance.

WARNING

Installation, maintenance and repairs should be performed by a Pitco Authorized Service and Parts (ASAP) company technician or other qualified personnel. Installation, maintenance or repairs by an unauthorized and unqualified personnel will void the warranty.

WARNING

Installation and all connections must be made according to national and local regulations and codes in force.

WARNING

During the warranty period if a customer elects to use a non-original part or modifies an original part purchased from Pitco and/or its Authorized Service and Parts (ASAP) companies, this warranty will be void. In addition, Pitco and its affiliates will not be liable for any claims, damages or expenses incurred by the customer which arises directly or indirectly, in whole or in part, due to the installation of any modified part and/or received from an unauthorized service center.

WARNING

This appliance, when installed, must be electrically grounded in accordance with local codes, or in the absence of local codes, with the National Electrical Code, ANSI/NFPA 70, or the Canadian Electrical Code, CSA C22.2, as applicable.

WARNING

If the appliance is equipped with a power cord and it is damaged, it must be replaced by a Pitco Authorized Service and Parts (ASAP) company technician, or a similarly qualified person in order to avoid a hazard.

WARNING

The power supply must be disconnected before servicing, maintaining or cleaning this appliance.

WARNING

The appliance is NOT jet stream approved. DO NOT clean the appliance with a water jet.

WARNING

DO NOT attempt to move this appliance or transfer hot liquids from one container to another when the unit is at operating temperature or filled with hot liquids. Serious personal injury could result if skin comes in contact with the hot surfaces or liquids.

WARNING

DO NOT sit or stand on this appliance. The appliance is not a step. Serious injury could result from slipping, falling or contact with hot liquids.

WARNING

The contents of the crumb catch and/or filter pan of any filter system must be emptied into a fireproof container at the end of the frying operation each day. Some food particles can spontaneously combust into flames if left soaking in certain oil/shortening materials.

WARNING

DO NOT operate appliance unless all panels and access covers are attached correctly.

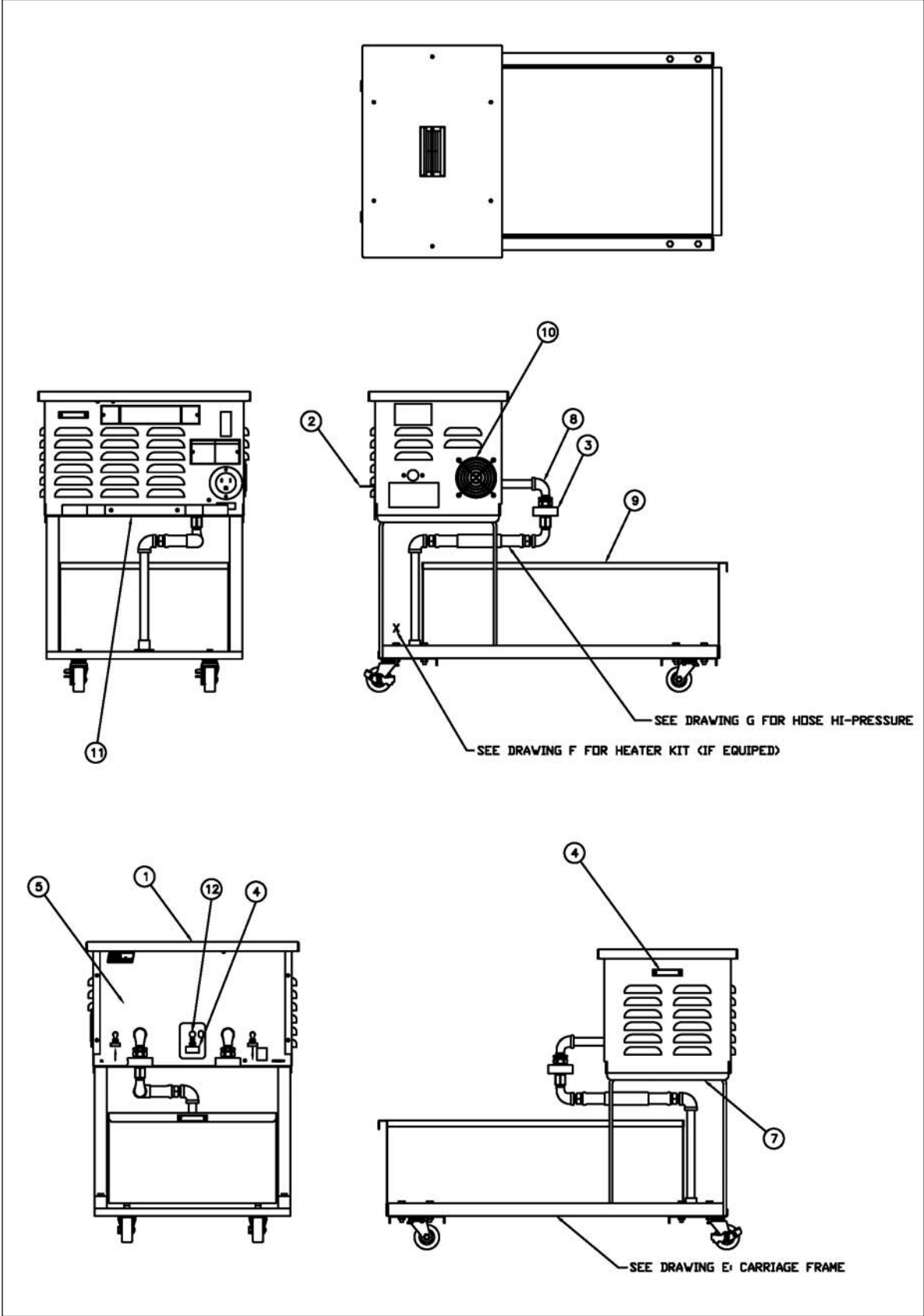
WARNING

It is recommended that this appliance be inspected by a qualified service technician for proper performance and operation on a yearly basis.

TABLE OF CONTENTS

| | |
|---|-----------|
| DRAWING A: PORTABLE FILTER | 4 |
| DRAWING A: PORTABLE FILTER PART NUMBERS | 5 |
| DRAWING B: FILTER HEATER KIT | 6 |
| DRAWING B: FILTER HEATER KIT PART NUMBERS | 7 |
| DRAWING C: SCHEMATIC FILTER PORTABLE 115/120V | 8 |
| DRAWING C: SCHEMATIC FILTER PORTABLE 115/120V PART NUMBERS | 9 |
| DRAWING D: SCHEMATIC FILTER PORTABLE 230/240V | 10 |
| DRAWING D: SCHEMATIC FILTER PORTABLE 230/240V PART NUMBERS | 11 |
| DRAWING E: FILTER CARRIAGE FRAME ASSEMBLY | 12 |
| DRAWING E: FILTER CARRIAGE FRAME ASSEMBLY PART NUMBERS | 13 |
| DRAWING F: FILTER PIPING MOBILE PUMP | 14 |
| DRAWING F: FILTER PIPING MOBILE PUMP PART NUMBERS | 15 |
| DRAWING G: FILTER HOSE HI-PRESSURE | 16 |
| DRAWING G: FILTER HOSE HI-PRESSURE PART NUMBERS | 17 |
| DRAWING H: HOSE NOZZLE OUTLET | 18 |
| DRAWING H: HOSE NOZZLE OUTLET PART NUMBERS | 19 |

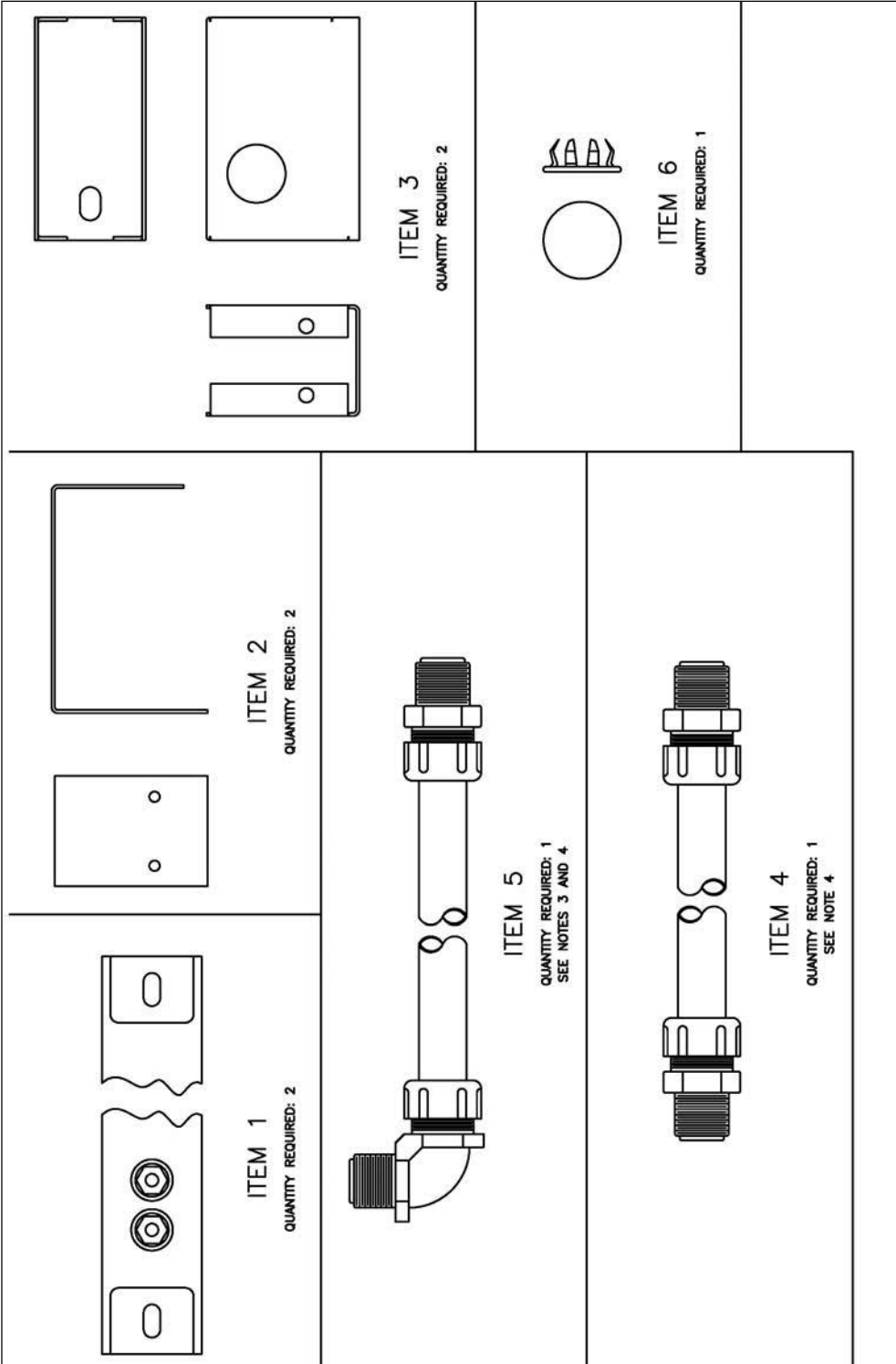
Drawing A: Portable Filter



Drawing A: Portable Filter Part Numbers

| Item# | Part No. | Description |
|-----------|------------|---|
| 1 | A7018102 | FILTER,CONTROL BOX COVER P/RP |
| 2 | A7032902 | FILTER,CORD PROTECTIVE BRACKET P14 |
| 3 | B7402241 | BLACK DONUT ASSEMBLY |
| 4 | PP10331 | LAMP,125V GREEN RECTANGLUAR |
| 5 | A7018202-3 | FILTER,CONTROL BOX FRONT P14P18* |
| 6 | A7018002 | FILTER,CONTROL BOX SIDE WRAPAROUND P/RP |
| 7 | B6660903 | FILTER,SUPPORT PLATE MOTOR WELDMENT P14 |
| 8 | P7037752-1 | ELBOW,STREET-3/8 90 PLATED |
| 9 | B7403903 | FILTER,PAN ASSEMBLY W/HOSE P14 |
| 10 | PP11378 | FAN,GUARD WIRE 3.125 SQ |
| 11 | A6657202 | FILTER,BRACKET ELECTRICAL CORD P14,P18 |
| 12 | P5047163 | SWITCH,TOGGLE SPDT 1-0-1 |
| Not Shown | A7018501 | FILTER,PUMP HEAT SHIELD FRONT P14 P18 |
| Not Shown | A7018601 | FILTER,PUMP HEAT SHIELD BK P14P18 |
| Not Shown | B6604910 | FILTER,COVER PAN ASSEMBLY P14 |
| Not Shown | P0093300 | NUT, HEX KEP 1/4-20 ZN |
| Not Shown | P5047674 | WIRENUT,BLUE |
| Not Shown | PP10612 | FILTER,PAPER 13 1/2 X 24 HEAVY DUTY |
| Not Shown | P7037304-1 | NIPPLE, PLATED 3/8 X 2 |
| Not Shown | P7037307-1 | NIPPLE, PLATED 3/8 X 3-1/2 |
| Not Shown | P7037316-1 | NIPPLE, PLATED 3/8 X 8 |
| Not Shown | P7037675-1 | ELBOW,PLATED 90 3/8 |
| Not Shown | B6603001 | FILTER,FRONT PAPER RETAINER ASSEMBLY BF14,P14 |
| Not Shown | A2510101 | TANK FITTING, NIPPLE DRAIN OUTLET 1.25 CURVED |
| Not Shown | B6681201 | FILTER,CRUMB SCOOP |
| Not Shown | P6072611 | RACK FILTER PAPER SUPPORT #14 |
| Not Shown | PP10732 | FILTER,POWDER 6 8 OZ. PKGS |
| Not Shown | P6072165 | BASKET,FILTER CATCH P14,P18 |
| Not Shown | B6601901 | FILTER,RETAINER BASKET WELDMENT F14 |
| Not Shown | PP11380 | CORD,PLUG/RECEPTACLE-MOLDED 16-3 SJTO |
| Not Shown | P6071490 | PLUG HOLE 7/8 PLATED |
| Not Shown | P6071497 | PLUG HOLE 3/4 PLATED |
| Not Shown | P5047671 | WIRENUT,ORANGE |
| Not Shown | A7018402 | FILTER,RESET GAURD P/RP |
| Not Shown | PP10689 | SCREW,6-32 X 1/2 RDH PHILLIPS ZN |
| Not Shown | P0091100 | NUT, HEX KEP 6-32 ZN |
| Not Shown | P0092300 | NUT, HEX KEP 10-24 ZN |
| Not Shown | PP10693 | SCREW,10-24 X 3/8 TH PHILLIPS ZN |
| Not Shown | PP10752 | SCREW,10-32 X 1/2 PNH PHILLIPS ZN TF |
| Not Shown | P0020600 | SCREW,1/4-20 X 5/8 HHC ZN |
| Not Shown | P0080650 | WASHER,FLAT 1/4 ZN SAE |

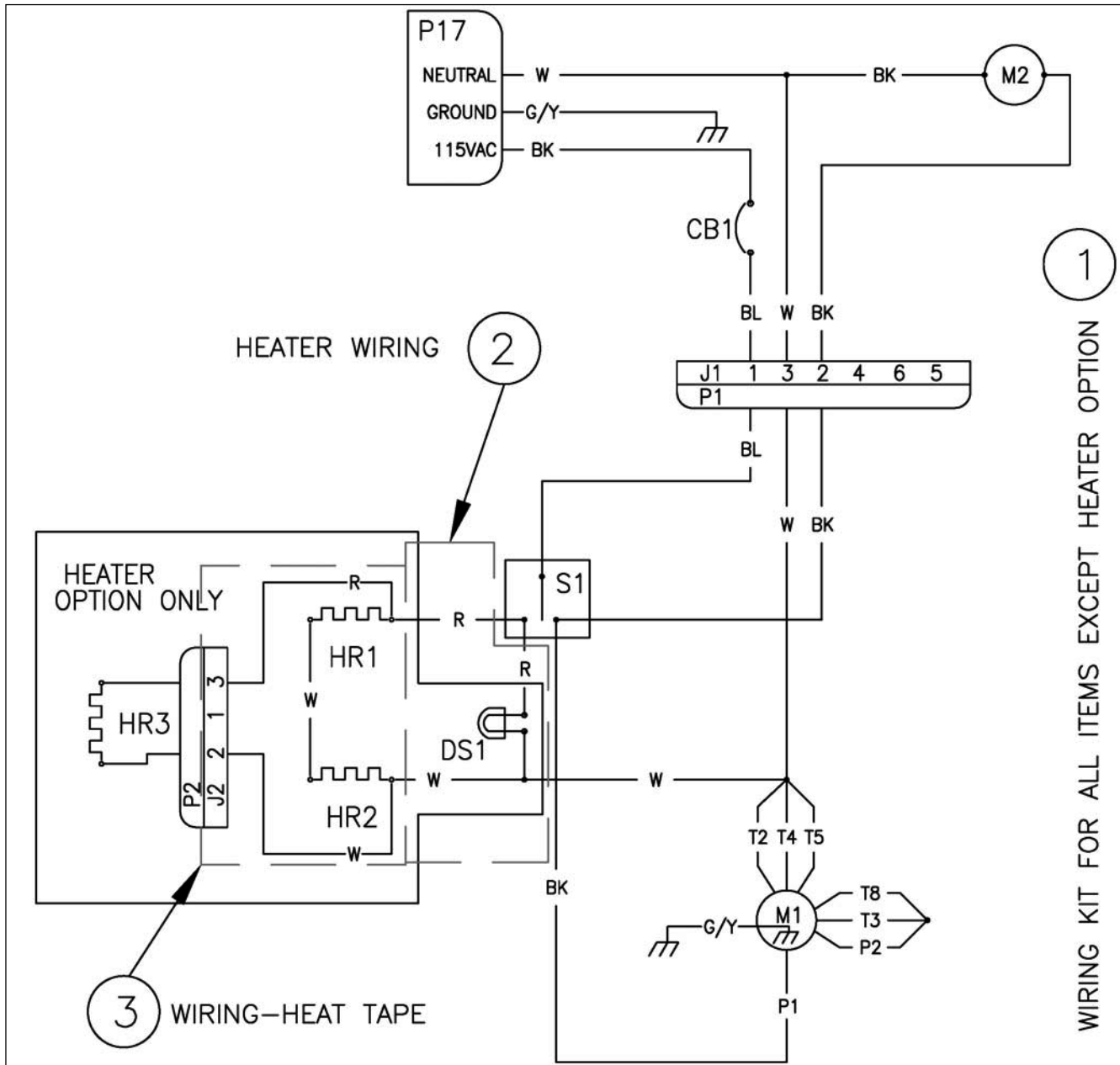
Drawing B: Filter Heater Kit



Drawing B: Filter Heater Kit Part Numbers

| Item# | Part No. | Description |
|--------------|-----------------|--|
| Entire kit | B6662703 | FILTER,HEATER KIT P14 RP14 |
| 1 | P5046980 | HEATER,STRIP 500W 120V |
| 2 | A7019202 | FILTER,HEATER RAIL COVER TOP P14* |
| 3 | A7019102 | FILTER,HEATER RAIL COVER BOTTOM P/RP |
| 4 | B6662801 | FILTER,HEATER SEALTITE 3INCH ASSEMBLY |
| 5 | B6662803 | FILTER,HEATER SEALTITE 9 INCH ASSEMBLY |
| 6 | P6071490 | PLUG HOLE 7/8 PLATED |

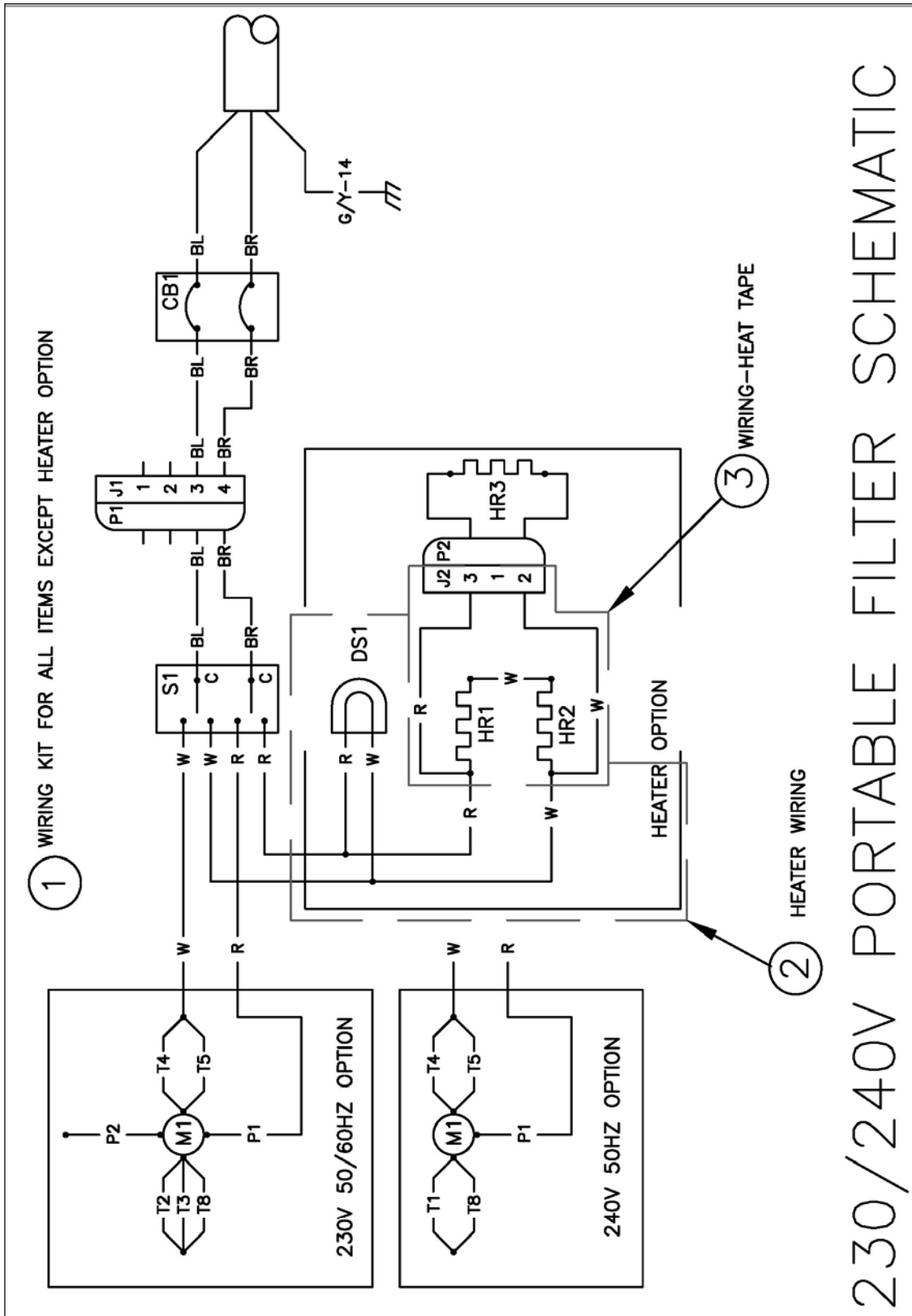
Drawing C: Schematic Filter Portable 115/120V



Drawing C: Schematic Filter Portable 115/120V Part Numbers

| Item# | Part No. | Description |
|--------------|-----------------|--|
| 1 | B6742801 | WIRING,PORTABLE FILTER 120VAC |
| 2 | B6742901 | WIRING,HEATER FILTER PORTABLE |
| 3 | B6785301 | WIRING,ADD HEAT TAPE P14* |
| CB1 | PP10460 | CIRCUIT BREAKER,SWITCH ROCKER SPST 250V 8A |
| DS1 | PP10331 | LAMP, 125VAC GREEN RECTANGLE |
| HR1, HR2 | P5046980 | HEATER, STRIP 500W 120V |
| HR3 | 60133503 | HEATER, TAPE 50W 120V 1/2 x 72 |
| M1 | PP10101 | PUMP/MOTOR ASSEMBLY, 115V/230 50/60HZ VAC 1/3 HP |
| M2 | PP11377 | FAN,AXIAL 34CFM 115V 50/60 3.14" SQ. |
| P17 | PP11379 | RECEPTACLE,FLANGED INLET-125V NEMA |
| S1 | P5047163 | SWITCH, TOGGLE SPDT 20A CTR-OFF |

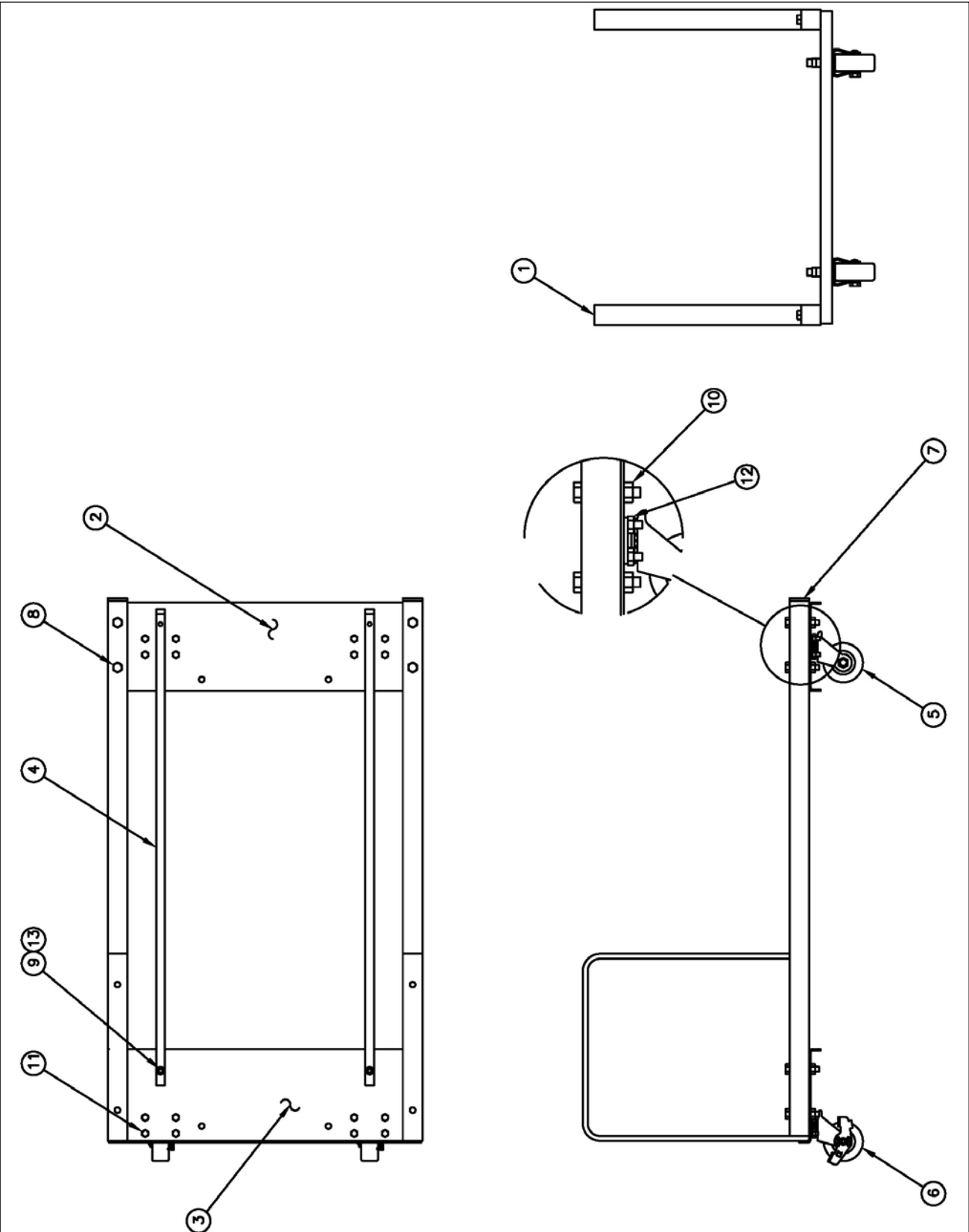
Drawing D: Schematic Filter Portable 230/240V



Drawing D: Schematic Filter Portable 230/240V Part Numbers

| Item# | Part No. | Description |
|--------------|-----------------|---|
| 1 | B6742801 | WIRING,PORTABLE FILTER 120VAC |
| 2 | B6742901 | WIRING,HEATER FILTER PORTABLE |
| 3 | B6785301 | WIRING,ADD HEAT TAPE P14* |
| CB1 | PP10470 | CIRCUIT BREAKER,SWITCH ROCKER DPST 250V 4A |
| DS1 | PP10736 | LAMP, 250VAC GREEN RECTANGLE |
| HR3 | 60133504 | HEATER, TAPE 50W 240V 1/2 x 72 |
| HR1, HR2 | P5046980 | HEATER, STRIP 500W 120V |
| M1 | PP10101 | PUMP/MOTOR ASSEMBLY, 115V//230 50/60HZ VAC 1/3 HP |
| | PP10171 | PUMP/MOTOR ASSEMBLY, 240V 50HZ VAC 1/3 HP |
| S1 | P5047165 | SWITCH, TOGGLE DPDT 3/4HP 1-0-1 |

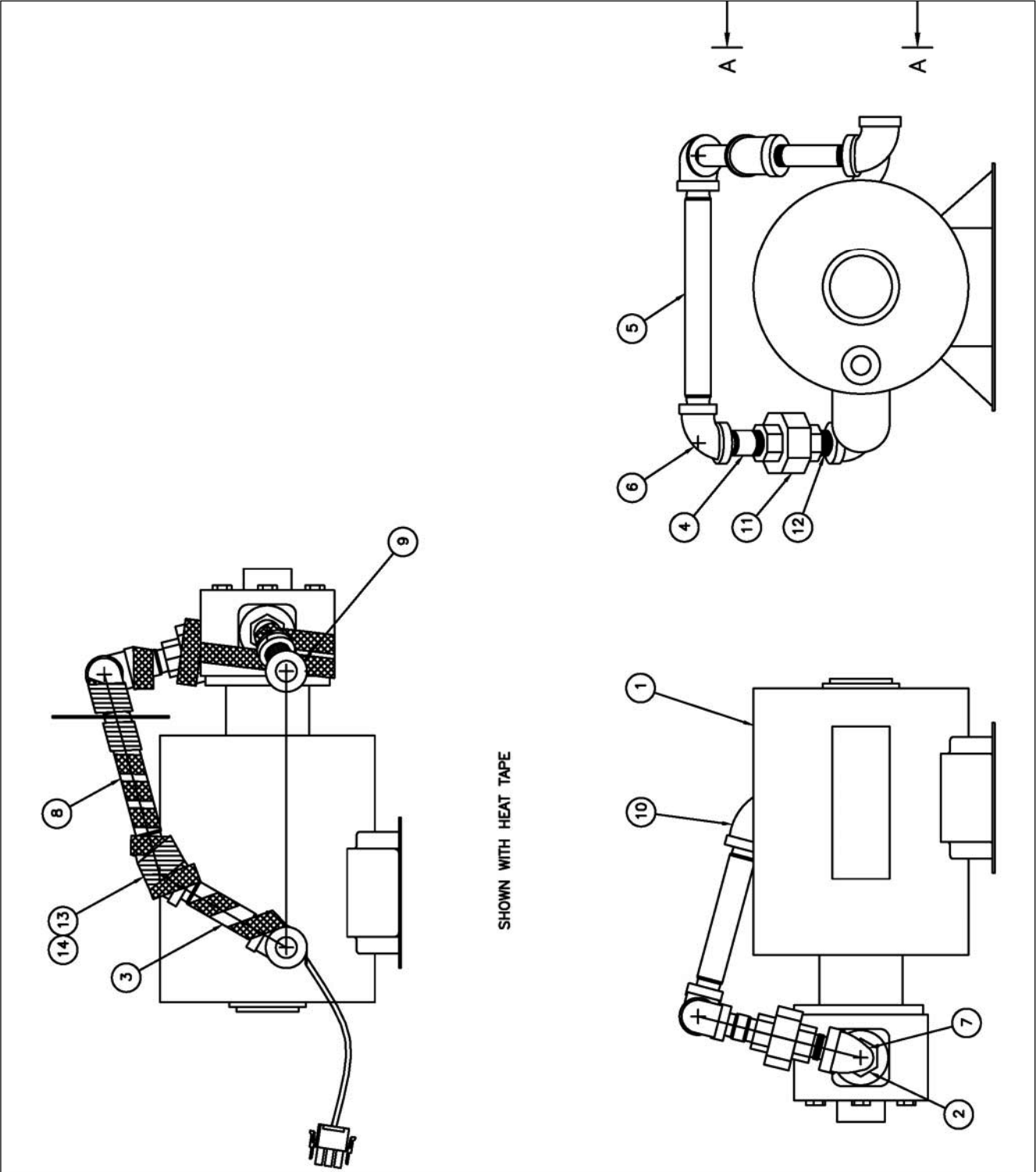
Drawing E: Filter Carriage Frame Assembly



Drawing E: Filter Carriage Frame Assembly Part Numbers

| Item# | Part No. | Description |
|-----------------|-----------------|---|
| Entire Assembly | B6660401 | FILTER,CARRIAGE FRAME P14,RP14 |
| 1 | B6660801 | FILTER,CARRIAGE SIDE FRAME WELDMENT 14 P/RP |
| 2 | A6620602 | FILTER,BRACE CARRIAGE P14 |
| 3 | A7017702 | FILTER,BRACE CARRIAGE REAR 14 P/RP |
| 4 | A6630801 | FILTER,SLIDE CARRIAGE PAN P14 |
| 5 | P6071062 | CASTER,PMF 2 W/TOP PLATE |
| 6 | PP11381 | CASTER,PMF 2 LOCKING W/TOP PLATE |
| 7 | P5045160 | CAP PLASTIC 7/8 MOBILE FILTER |
| 8 | P0021100 | SCREW,1/4-20 X 1-1/2 HHC ZN |
| 9 | PP11369 | SCREW,1/4-20 X 3/4 SCH CAP |
| 10 | P0093300 | NUT,HEX KEP 1/4-20 ZN |
| 11 | P0011300 | SCREW,10-24 X 3/8 INDT HEX |
| 12 | P0092300 | NUT,HEX KEP 10-24 ZN |
| 13 | P6071219 | BUMPER,END |

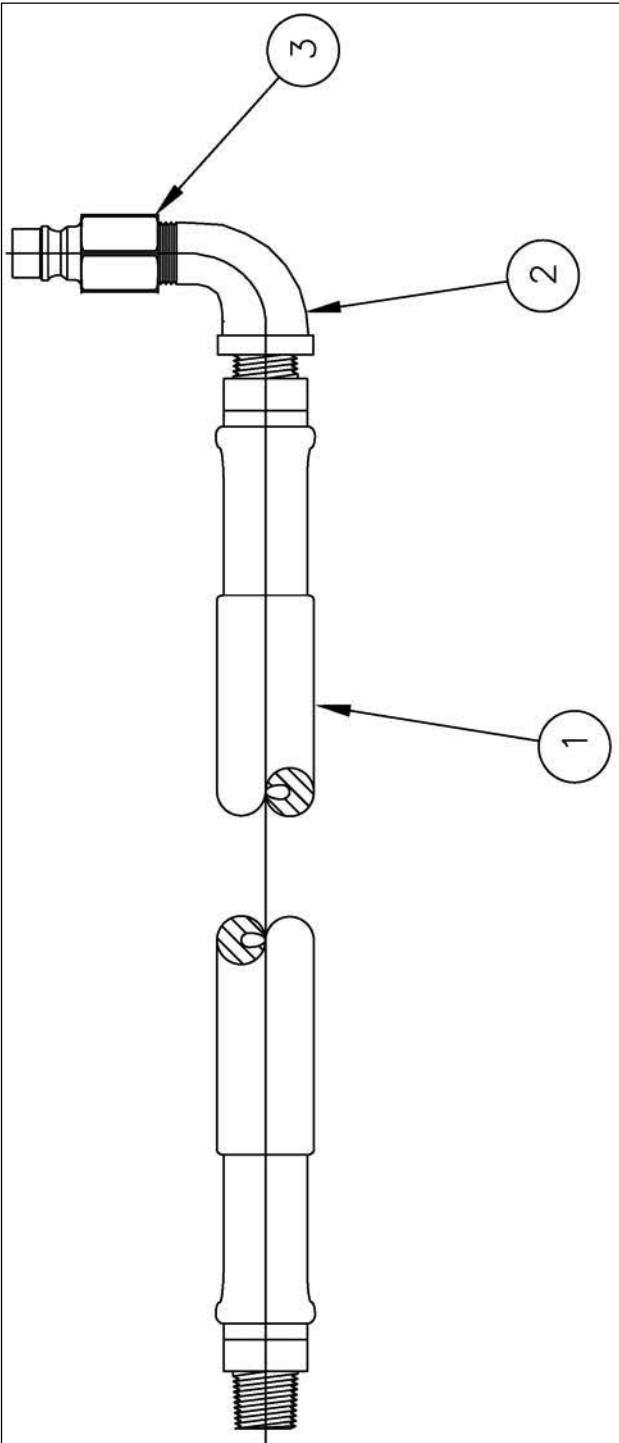
Drawing F: Filter Piping Mobile Pump



Drawing F: Filter Piping Mobile Pump Part Numbers

| Item# | Part No. | Description |
|-----------------|-----------------|--|
| Entire Assembly | B6660501 | FILTER, PIPING PUMP 115/220 P14* WITHOUT HEAT TAPE |
| Entire Assembly | B6660502 | FILTER, PIPING PUMP 240 P14* WITHOUT HEAT TAPE |
| Entire Assembly | B6660503 | FILTER, PIPING PUMP 115/220 P14* WITH HEAT TAPE |
| Entire Assembly | B6660504 | FILTER, PIPING PUMP P14* 240 WITH HEAT TAPE |
| Entire Assembly | B6660505 | FILTER, PIPING PUMP P14* 230 WITH HEAT TAPE |
| 1 | PP10101 | PUMP/MOTOR-1/3HP 115/230V 50/60H |
| 1 | PP10171 | PUMP/MOTOR-1/3HP 240V 50HZ HA |
| 2 | P7036014 | BUSHING,REDUCER HEX 1/2X3/8 NPT BLK |
| 3 | P7037306 | NIPPLE,BLK 3/8 X 3 |
| 4 | P7037300 | NIPPLE,BLK 3/8 SP |
| 5 | P7037313 | NIPPLE,BLK 3/8 X 6-1/2 |
| 6 | P7037675 | ELBOW,BLK 90 3/8 |
| 7 | P7037752 | ELBOW,BLK ST 90 3/8 |
| 8 | P7037311 | NIPPLE,BLK 3/8 X 5-1/2 |
| 9 | P7037770 | ELBOW,BLK 45 ST 3/8 |
| 10 | P7037720 | ELBOW,BLK 45 3/8 |
| 11 | P7036901 | UNION BLK 3/8 |
| 12 | P7037301 | NIPPLE,BLK 3/8 CL |
| 13 | 60133503 | HEATER,TAPE 50W 115/120V 1/2 X 72 |
| 13 | 60133504 | HEATER,TAPE 50W 230/240V 1/2 X 72 |
| 14 | PP10775 | TAPE,ELECTRICAL HT RES WHT 3/4 |

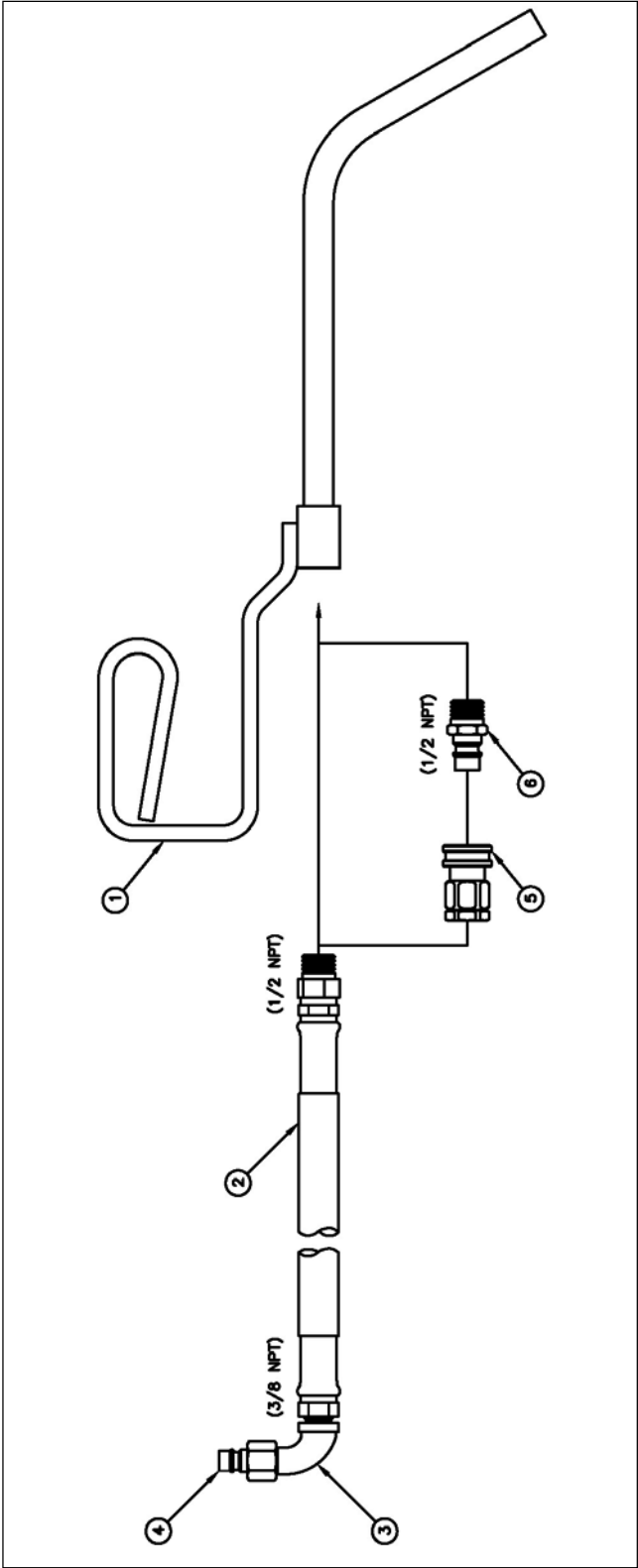
Drawing G: Filter Hose Hi-Pressure



Drawing G: Filter Hose Hi-Pressure Part Numbers

| Item# | Part No. | Description |
|-----------------|-----------------|--------------------------------------|
| Entire Assembly | B6602403 | FILTER, HOSE ASSEMBLY P14-P34 IN 10" |
| 1 | A6653503 | FILTER, HOSE 9.25 P14-P34 IN |
| 2 | P7037752-1 | ELBOW, STREET-3/8 90 PLATED |
| 3 | P6071123 | CONNECTOR, NIPPLE 3/8 MALE NPT |

Drawing H: Hose Nozzle Outlet



Drawing H: Hose Nozzle Outlet Part Numbers

| Item# | Part No. | Description |
|-----------------|-----------------|---|
| Entire Assembly | B6602501 | FILTER,HOSE/NOZZLE OUTLET 60 BIF/PORTABLE |
| 1 | B6661001 | FILTER,WELDMENT NOZZLE RETURN 3/4 INLET BIF |
| 2 | A6653505 | FILTER,HOSE 63.75 PORTABLE/BIF OUTLET |
| 3 | P7037752-1 | ELBOW,STREET-3/8 90 PLATED |
| 4 | P6071123 | CONNECTOR,NIPPLE 3/8 MALE NPT |
| 5 | 60033901 | CONN,COUPLER 1/2 NPT |
| 6 | 60015901 | CONN,NIPPLE 1/2 MALE NPT |

In the event of problems with or questions about your order, please contact the Pitco Frialator factory at:
(603) 225-6684 World Wide

In the event of problems with or questions about your equipment please contact the Pitco Frialator Authorized Service and Parts Representative (ASAP) covering your area or contact Pitco at the numbers listed to the

MAILING ADDRESS – P.O. BOX 501, CONCORD, NH 03302-0501
SHIPPING ADDRESS – 10 FERRY ST., CONCORD, NH 03301