



P18K
PORTABLE FILTER
PARTS MANUAL



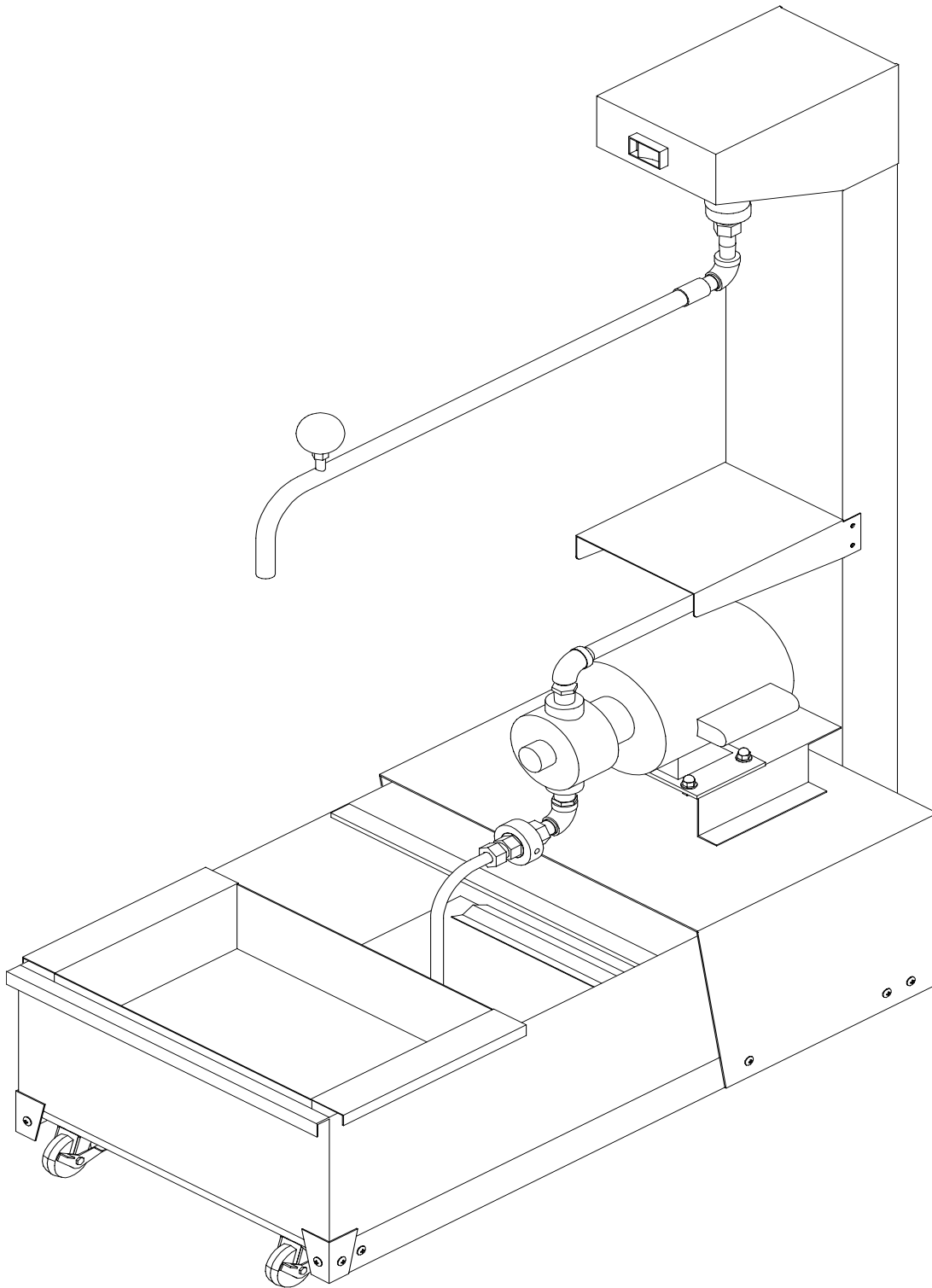
PITCO FRIALATOR INC.

P.O. Box 501, Concord, NH 03302-0501 • USA Telephone • (603) 225-6684 • Fax: (603) 225-8497

PN L22-215 R1 (02/15)

Page Left Blank Intentionally

**P18K FILTER SYSTEM
FULL ASSEMBLY**

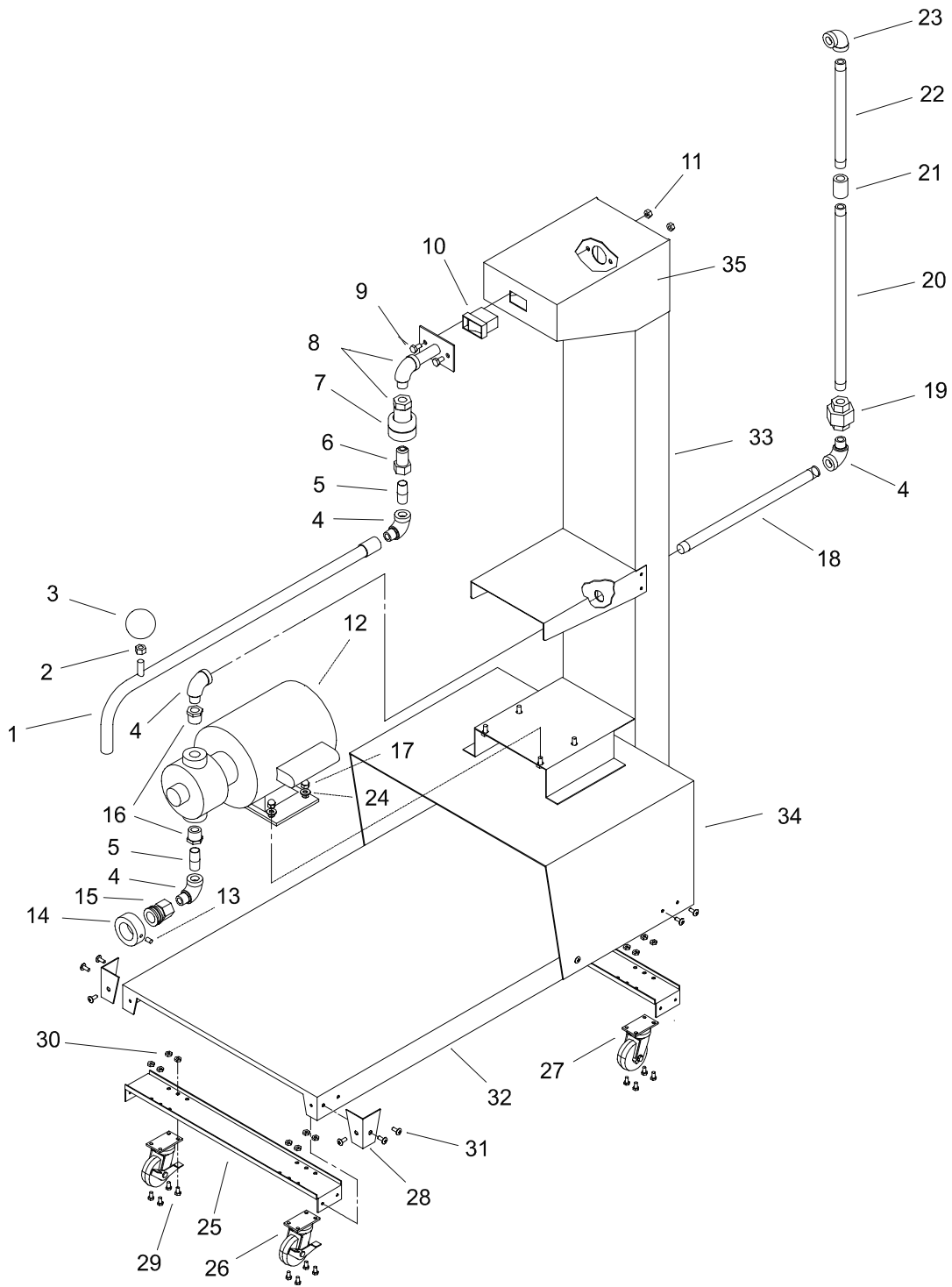


ORIGINATOR: BHPRIEST
DATE: 10-22-00
REVISION: 0

**P18K FILTER SYSTEM
MAIN PARTS LIST**

ITEM #	PART #	PART DESCRIPTION
1	B6630501	FILTER NOZZLE P18K
2	P0095000	NUT, 3/8-16
3	PP10834	BALL HANDLE
4	P7037752-1	STREET ELBOW, 3/8
5	P7037301	CLOSE NIPPLE, 3/8
6	PP10741	VALVED PUSH CONNECTOR
7	B6660001-C	FILTER DISCONNECT ASSEMBLY
8	B6634801	FILTER PIPING ASSEMBLY
9	P0113300	SCREW, 1/4-20 X 1/2
10	PP10460	ROCKER SWITCH SPST, CIRCUIT BREAKER 8A 250V
	PP10470	ROCKER SWITCH DPST, CIRCUIT BREAKER 4A 250V
11	P0093300	HEX NUT(KEP), 1/4-20
12	PP10101	FILTER PUMP/MOTOR, 115/230V
	PP10171	FILTER PUMP/MOTOR, 240V
	PP10416	FILTER MOTOR, 115/230V
	PP10417	FILTER PUMP
13	P0062100	SET SCREW, 1/4-20 X 3/8
14	P6071253	SNAP TITE FILTER HANDLE
15	P6071122	COUPLER, FEMALE, 3/8
16	P7036014	REDUCER BUSHING, 1/2 X 3/8 NPT BLK
17	PP10668	ACORN NUT w/CENTRLOCK, 1/4-20
18	P7037324-1	PLATED NIPPLE, 3/8 X 12
19	P7036901	UNION, 3/8
20	P7037330	NIPPLE, 3/8 X 16
21	P7036600	COUPLING3/8 ,
22	P7037315	NIPPLE, 3/8 X 7-1/2
23	P7037675	ELBOW, 3/8
24	P0080650	FLAT WASHER, 1/4
25	A6691502	P18K CASTER BRACE
26	PP11381	LOCKING CASTER
27	P6071062	NON-LOCKING CASTER
28	A6692802	P18K CARRIAGE CORNER SUPPORT
29	P0011300	SCREW, 10-24 X 3/8
30	P0092300	HEX NUT (KEP), 10-24
31	PP10752	SCREW, 10-32 X 1/2
32	A6691302	FILTER CARRAIGE
33	A6691702	FILTER PIPING SUPPORT

P18K FILTER SYSTEM MAIN SUBASSEMBLY

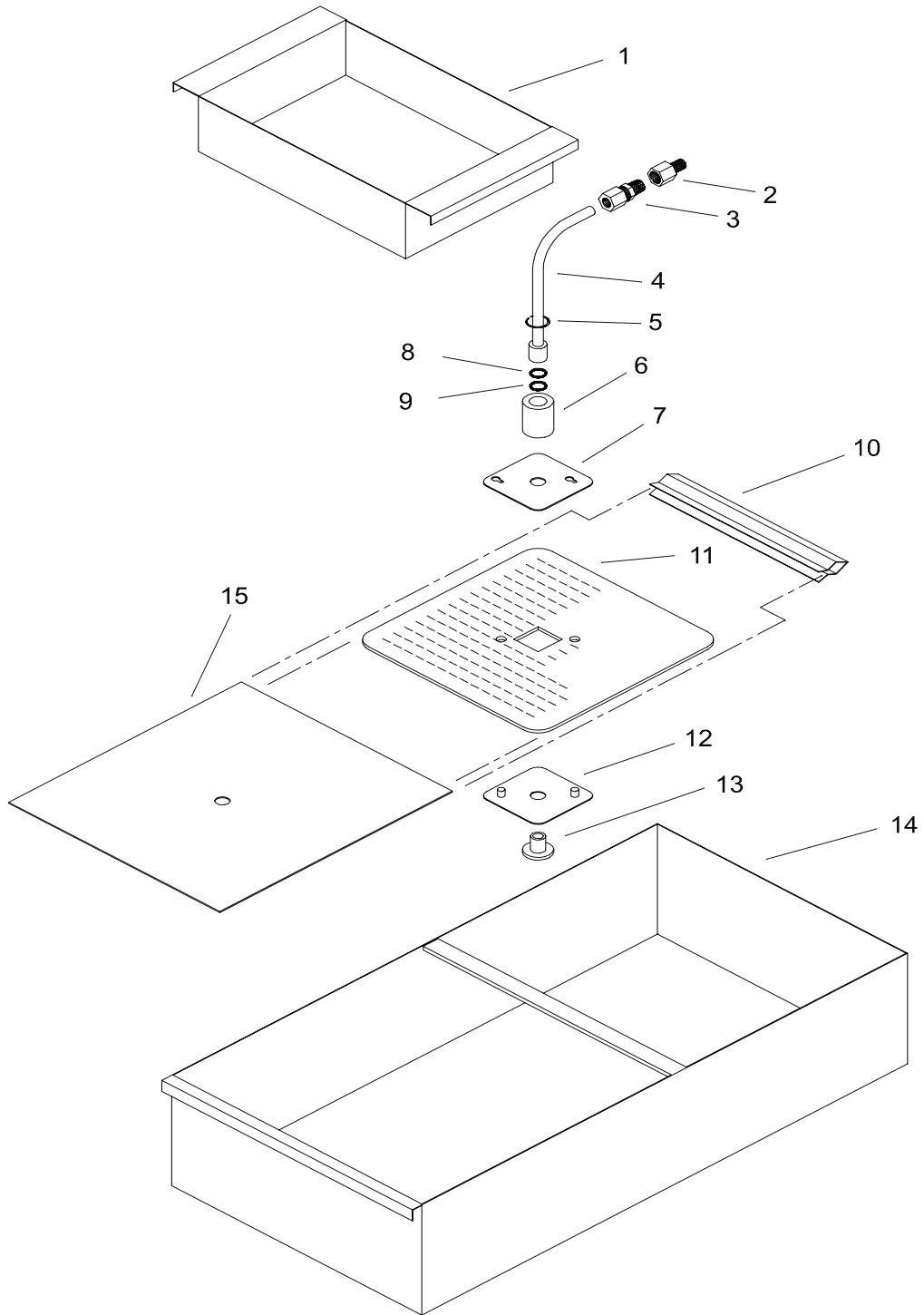


ORIGINATOR: BHPRIEST
DATE: 10-22-00
REVISION: 0

**P18K FILTER SYSTEM
PAN SUBASSEMBLY PARTS LIST**

ITEM #	PART #	PART DESCRIPTION
1	B6630701	FILTER CRUMB CATCH BASKET ASSEMBLY
	A6693202	FILTER CATCH CRUMB SCREEN BOTTOM
2	P6071123	MALE NIPPLE CONNECTOR
3	P7037796	COMPRESSION FITTING
4	B6631101	FILTER PICK-UP TUBE
5	PP10842	INTERNAL RETAINING RING
6	A6678602	UPPER COUPLING
7	A6693902	FILTER ATTACHMENT TOP PLATE
8	PP10409	O-RING
9	B6615301	FILTER INLET SCREEN
10	A6674902	FILTER PAPER RETAINER CLIP
11	A6682108	FILTER PAPER RACK
12	B6631601	FILTER ATTACHMENT BOTTOM PLATE
13	A6678402	REMOVABLE BOTTOM COUPLING
14	B6629801	FILTER PAN
15	PP10613	FILTER ENVELOPE
16	B6631301-C	PICK-UP ASSEMBLY (INCLUDES 2-13)

**P18K FILTER SYSTEM
PAN SUBASSEMBLY**

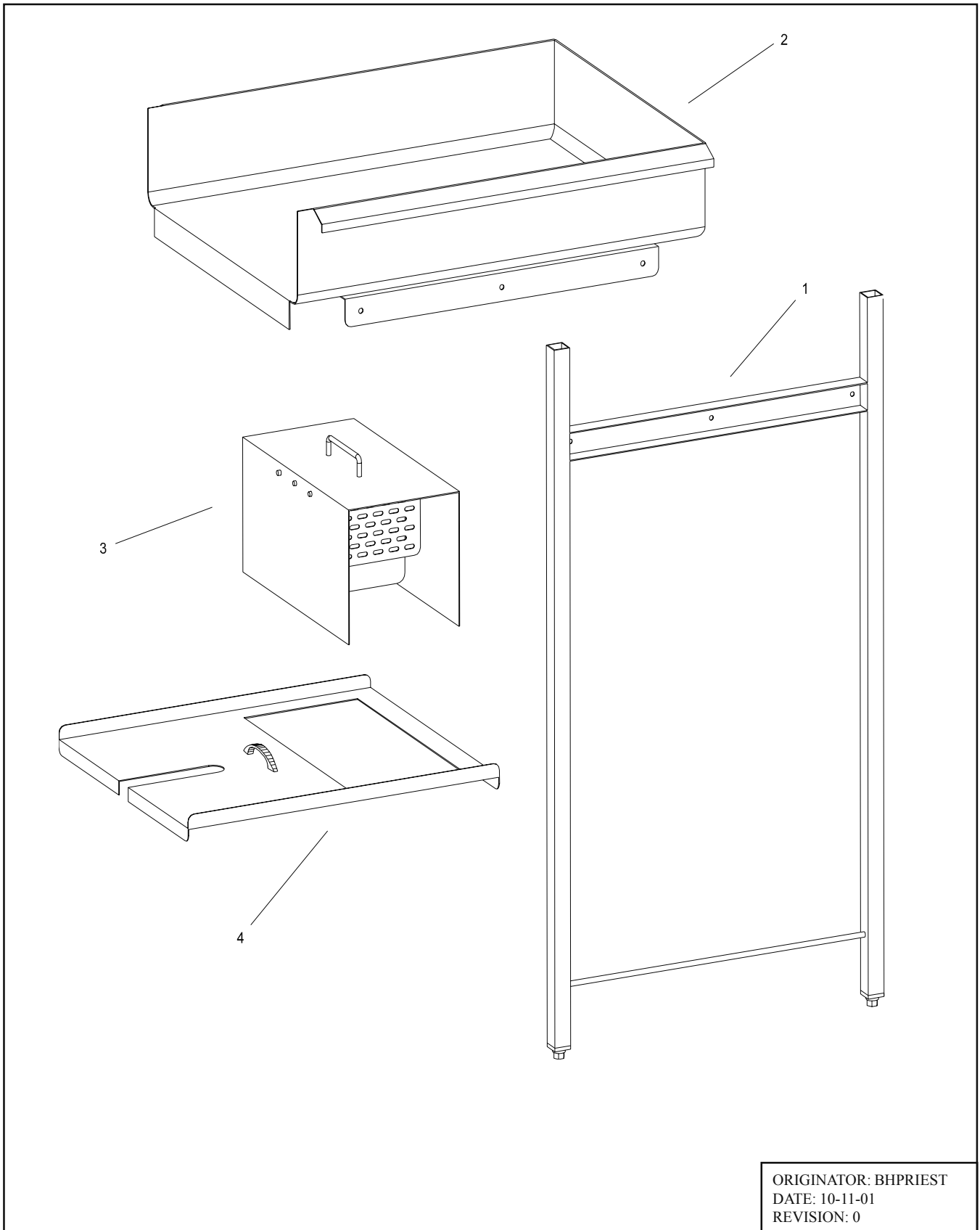


ORIGINATOR: BHPRIEST
DATE: 10-22-00
REVISION: 0

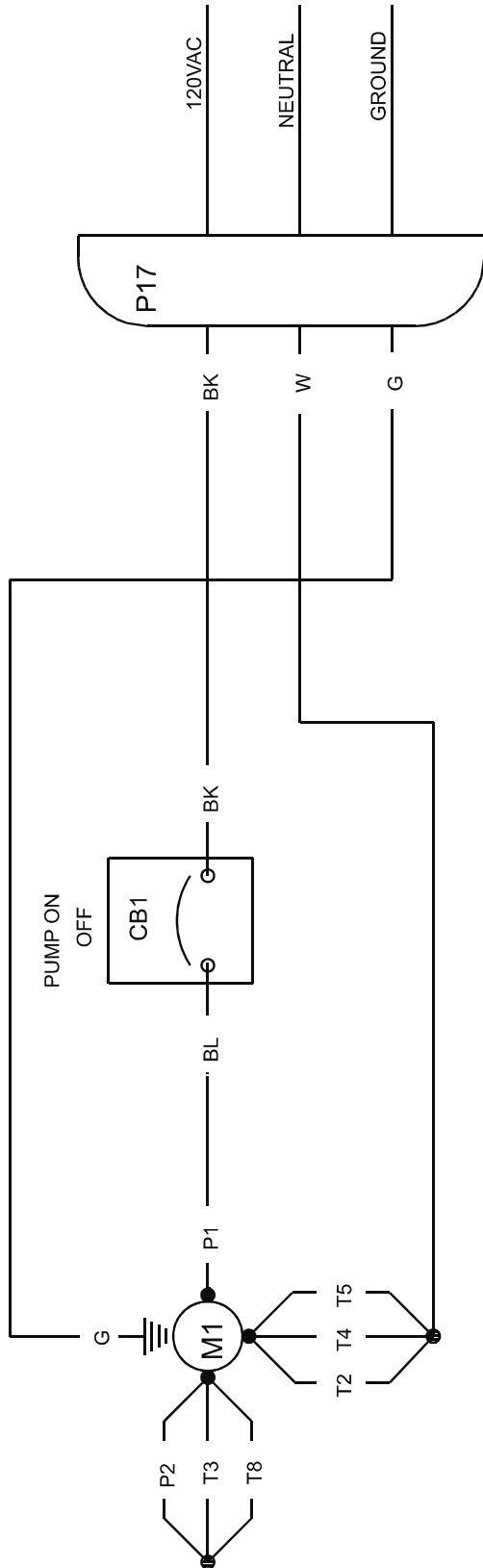
**P18K FILTER SYSTEM
ACCESSORIES PARTS LIST**

ITEM #	PART #	PART DESCRIPTION
1	B6630601	LANDING PAN LEGS
2	B6630101	LANDING PAN
3	B6629901	OIL DIVERTER
4	B6632301	FILTER PAN COVER

P18K FILTER SYSTEM ACCESSORIES DRAWING



**P18K FILTER SYSTEM
700312 DOMESTIC SCHEMATIC**

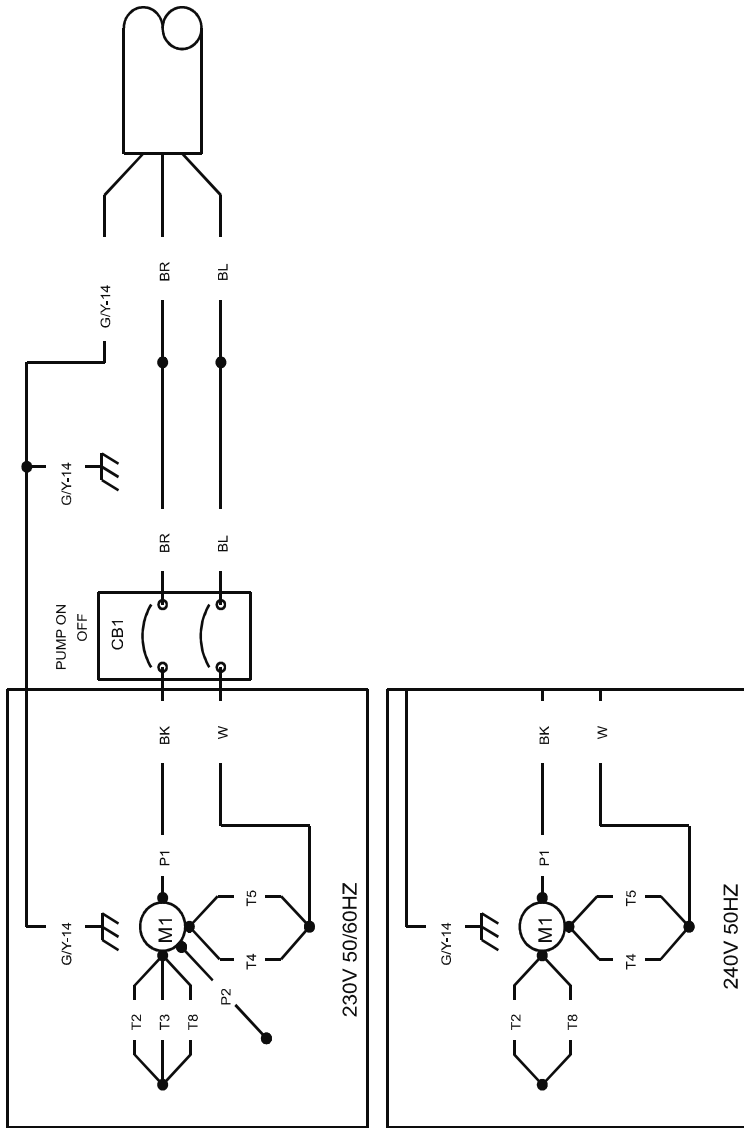


PARTS LIST

NOMENCLATURE	PART NO.	DESCRIPTION
M1	PP10101	PUMP/MOTOR-1/3 HP 115/230 V 50/60 HZ
CB1	PP10460	CIRCUIT BREAKER, SWITCH ROCKER SPST 8 AMP 250 VAC
P17	PP11379	RECEPTACLE, FLANGED INLET-125V NEMA 5-15P
	PP11380	POWER CORD
	B6742701	WIRE HARNESS

P18K FILTER SYSTEM

700325 CE/INTERNATIONAL SCHEMATIC



PARTS LIST		
NOMENCLATURE	PART NO.	DESCRIPTION
M1	PP10101	PUMP/MOTOR-1/3 HP 115/230 V 50/60 HZ
CB1	PP10171	PUMP/MOTOR-1/3 HP 240 V 50 HZ
	PP10470	CIRCUIT BREAKER, SWITCH ROCKER DPST 4 AMP 250 VAC
	60133001	POWER CORD
	B6747201	WIRE HARNESS

In the event of problems with or questions about your order, please contact the Pitco Frialator factory at:
(603) 225-6684 World Wide
www.pitco.com

In the event of problems with or questions about your order, please contact the Pitco Frialator Authorized Service and Parts representative (ASAP) covering your area, or contact Pitco at the number listed to the left.