



IMPORTANT FOR FUTURE REFERENCE

Please complete this information and retain this manual for the life of the equipment:

Model #: _____

Serial #: _____

Date Purchased: _____

ENGLISH

Exploded Parts Manual

SSHLV14, SSHLV14T



TO THE PURCHASER

Post in a prominent location the instructions to be followed in the event that an operator smells gas. Obtain this information from your local gas supplier.

FOR YOUR PROTECTION

DO NOT store or use gasoline or other flammable vapors and liquids in the vicinity of this or any other appliance. Do not spray aerosols in the vicinity of this appliance when it is in operation.

WARNING

Improper installation, operation, alteration, adjustments, service or maintenance can cause property damage, injury or death. Read the installation, operating and maintenance instructions thoroughly before installing, operation, servicing this appliance.

WARNING

Installation, maintenance and repairs should be performed by a Pitco Authorized Service and Parts (ASAP) company technician or other qualified personnel. Installation, maintenance or repairs by an unauthorized and unqualified personnel will void the warranty.

WARNING

Installation and all connections must be made according to local codes in force. In the absence of local codes in North America, the installation must conform with the National Fuel Gas Code, ANSI Z223.1/NFPA 54 or the Natural Gas and Propane Installation Code CSA B149.1 as applicable. In Australia, the appliance must be installed in compliance with AS/NZS 5601.

WARNING

During the warranty period if a customer elects to use a non-original part or modifies an original part purchased from Pitco and/or its Authorized Service and Parts (ASAP) companies, this warranty will be void. In addition, Pitco and its affiliates will not be liable for any claims, damages or expenses incurred by the customer which arises directly or indirectly, in whole or in part, due to the installation of any modified part and/or received from an unauthorized service center.

WARNING

This appliance, when installed, must be electrically grounded in accordance with local codes, or in the absence of local codes, with the National Electrical Code, ANSI/NFPA 70, or the Canadian Electrical Code, CSA C22.2, as applicable

WARNING

Adequate means must be provided to LIMIT the movement of this appliance without depending on the gas or electrical cord connection. Single appliances equipped with legs must be stabilized by installing anchor straps. All appliances equipped with casters must be stabilized by installing restraining chains.

WARNING

DO NOT alter or remove structural material on the appliance to accommodate placement under a ventilation hood.

WARNING

If the appliance is equipped with a power cord and it is damaged, it must be replaced by a Pitco Authorized Service and Parts (ASAP) company technician, or a similarly qualified person in order to avoid a hazard.

WARNING

The power supply must be disconnected before servicing, maintaining or cleaning this appliance.

WARNING

The appliance is NOT jet stream approved. DO NOT clean the appliance with a water jet.

WARNING

DO NOT attempt to move this appliance or transfer hot liquids from one container to another when the unit is at operating temperature or filled with hot liquids. Serious personal injury could result if skin comes in contact with the hot surfaces or liquids.

WARNING

DO NOT use an open flame to check for gas leaks!

WARNING

DO NOT sit or stand on this appliance. The appliance's front panel, tank, splash back, tank cover, work shelf, drain board is not a step. Serious injury could result from slipping, falling or contact with hot liquids.

WARNING

NEVER use the appliance as a step for cleaning or accessing the ventilation hood. Serious injury could result from slips, trips or from contacting hot liquids.

WARNING

The oil/shortening level should NOT fall below the minimum indicated level line at any time. The use of old shortening can be dangerous as it will have a reduced flash point and be more prone to surge boiling.

WARNING

The contents of the crumb catch and/or filter pan of any filter system must be emptied into a fireproof container at the end of the frying operation each day. Some food particles can spontaneously combust into flames if left soaking in certain oil/shortening materials.

WARNING

Completely shut the appliance down when shortening/oil is being drained from the appliance. This will prevent the appliance from heating up during the draining and filling process. Serious injury can occur.

WARNING

This appliance is intended for indoor use only.

WARNING

DO NOT operate appliance unless all panels and access covers are attached correctly.

WARNING

It is recommended that this appliance be inspected by a qualified service technician for proper performance and operation on a yearly basis.

WARNING

There is an open flame inside this appliance. The unit may get hot enough to set nearby materials on fire. Keep the area around the appliance free from combustibles.

WARNING

DO NOT supply the appliance with a gas that is not indicated on the data plate. If you need to convert the appliance to another type of fuel, contact your dealer.

WARNING

If gas flow to appliance is interrupted, or pilots extinguish, wait 5 minutes before attempting to relight the pilot to allow any residual gas in appliance to dissipate.

WARNING

Ensure that the appliance can get enough air to keep the flame burning correctly. If the flame is starved for air, it can give off a dangerous carbon monoxide gas. Carbon monoxide is a clear odorless gas that can cause suffocation.

WARNING

Never add oil to the appliance when it is at operating temperature. Splashing hot oil can cause severe injuries.

WARNING

Never add water to hot oil. Violent boiling can occur causing severe injury.

WARNING

This appliance is intended for professional use only and should be operated by fully trained and qualified personnel.

WARNING

To avoid splashing of hot liquid when installed, this fryer must be restrained either by the manner of installation, or with adequate ties to prevent tipping.

WARNING

An appliance equipped with casters and a flexible gas line must be connected to the gas supply with a quick disconnect device. In North America, gas appliances equipped with casters must be installed with connectors that comply with the Standard for Connectors for Movable Gas Appliances, ANSI Z21.69.CSA 6.16 Latest Edition. This connection should include a quick disconnect device that complies with the Standard for Quick Disconnect Devices for Use With Gas Fuel ANSI Z221.41.CSA 6.9 Latest Edition. In Australia, an appliance equipped with casters and a flexible gas line must be connected to the gas supply with a quick disconnect device that complies with AS 4627. The hose must comply with AS/NZS 1869 and be class B or D and have a restraining cable. The restraining cable must not exceed 80% of the length of the flexible gas line.

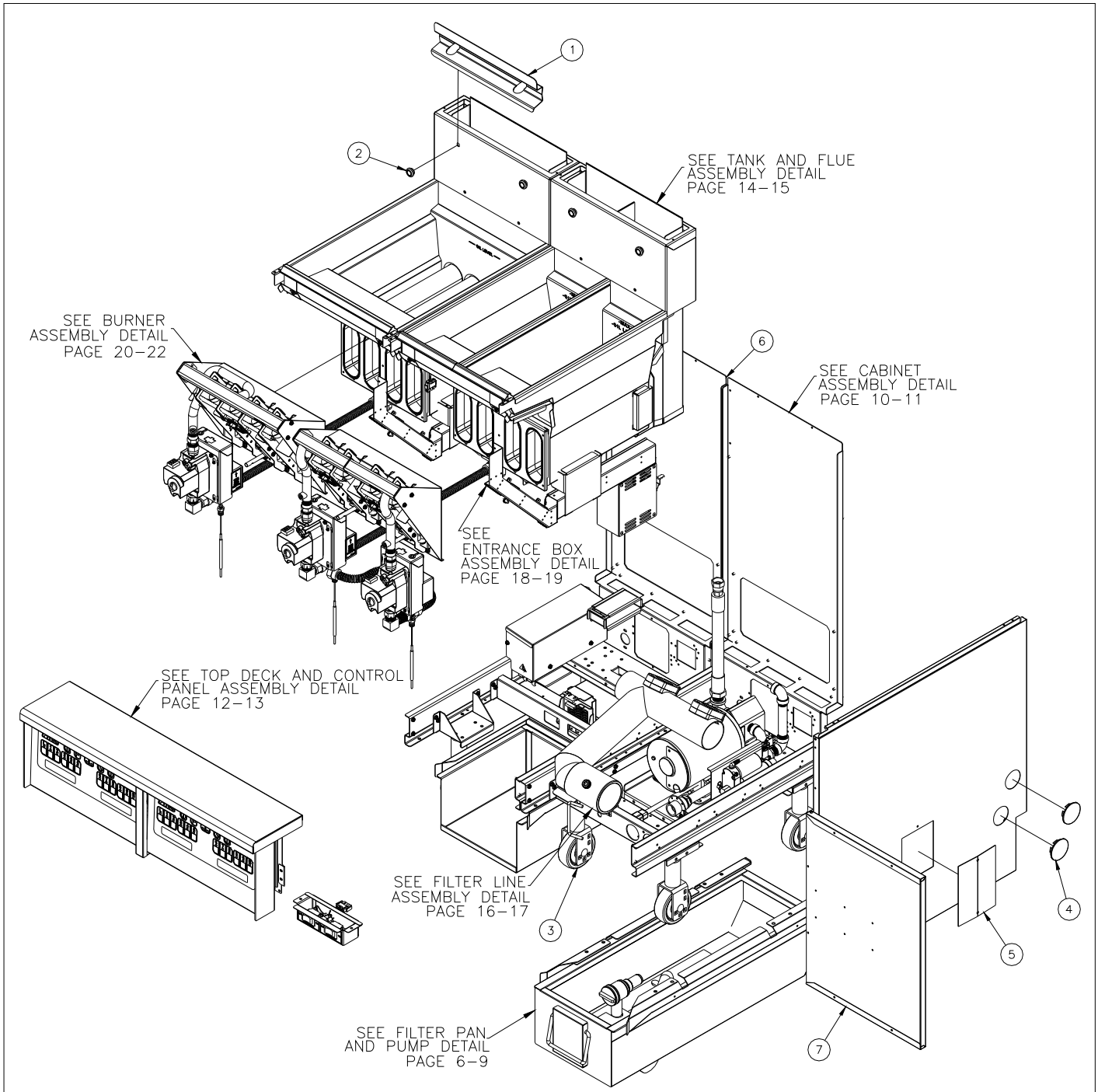
Table of Contents

| | |
|---|----|
| A.) FRYER EXPLODED PARTS LIST | 4 |
| FRYER EXPLODED DETAIL..... | 5 |
| B.) FILTER PAN & PUMP PARTS LIST | 6 |
| FILTER PAN AND PUMP DETAIL..... | 7 |
| C.) SOLO FILTER PAN PARTS LIST | 8 |
| SOLO FILTER PAN DETAIL..... | 9 |
| D.) CABINET PARTS LIST | 10 |
| CABINET DETAIL..... | 11 |
| E.) TOP DECK & CONTROL PANEL PARTS LIST | 12 |
| TOP DECK & CONTROL PANEL DETAIL..... | 13 |
| F.) TANK & FLUE PARTS LIST | 14 |
| TANK & FLUE DETAIL..... | 15 |
| G.) DRAIN LINE PARTS LIST | 16 |
| DRAIN LINE DETAIL..... | 17 |
| H.) ENTRANCE BOX PARTS LIST | 18 |
| ENTRANCE BOX VIEW..... | 19 |
| J.) BURNER & GAS SUPPLY PARTS LIST | 20 |
| BURNER & GAS SUPPLY DETAIL..... | 21 |
| BURNER & GAS SUPPLY PARTS LIST B..... | 22 |
| K.) BASKET LIFT ASSEMBLY PARTS LIST | 24 |
| BASKET LIFT ASSEMBLY DETAIL..... | 25 |
| L.) BASKET LIFT COMPONENTS PARTS LIST | 26 |
| BASKET LIFT COMPONENTS DETAIL..... | 27 |

A.) Fryer Exploded Parts List

| ITEM # | PART# | PART DESCRIPTION |
|--------|------------|---|
| 1 | A1103204 | BASKET HANGER,W/O CAP DG,MDG |
| 2 | 60138101 | TANK,STUD SPLASH BACK SCREW ON |
| 3 | 60132401 | 9" LEG |
| | B3900704 | 9" LEG SET OF 4 WITH HARDWARE |
| | 60115301 | 9" LEG WITH BOTTOM BOLT FLANGE ADJUSTABLE |
| | PP10814 | 9" CASTER NON-LOCKING |
| | B3901504 | 9" CASTER SET OF 4 (2 LOCKING, 2 NON-LOCKING) |
| | B3902302 | 9" RIGID CASTER NON-LOCKING |
| | PP10815 | 9" CASTER LOCKING |
| | B3902304 | 9" RIGID CASTER LOCKING |
| 4 | P6071498 | HOLE PLUG 1-1/2" CHROME PLATED |
| 5 | A6613102-C | FILTER DRAIN LINE CABINET COVER SST |
| 6 | A1859206 | CABINET, REAR JOINING STRIP TOP |
| | A1859208 | CABINET, REAR JOINING STRIP BOTTOM |
| | A1865901 | CABINET, FRONT JOINING STRIP |
| | A1908202 | CHANNEL STRIP, CABINET JOINING |
| 7 | B2304619 | DOOR ASSEMBLY, SSSLV14, SSSLV14T |
| 8 | B3801801 | HINGE WELDMENT LOWER RIGHT HAND SG* |
| | B3801802 | HINGE WELDMENT LOWER LEFT HAND SG* |
| 9 | B3802401 | HINGE WELDMENT UPPER RIGHT HAND SG* |
| | B2802402 | HINGE WELDMENT UPPER LEFT HAND SG* |

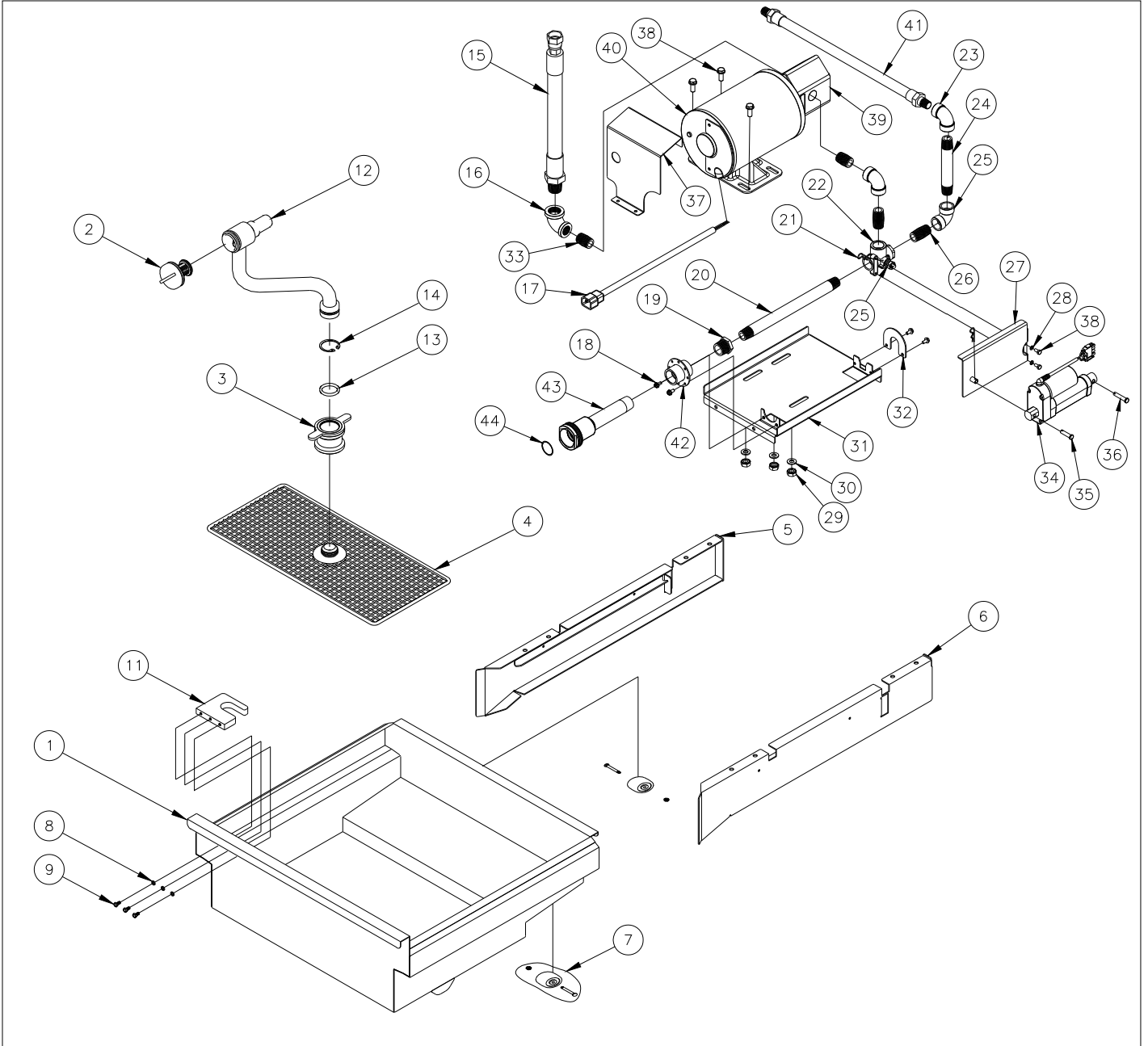
Fryer Exploded Detail



B.) Filter Pan & Pump Parts List

| ITEM # | PART# | PART DESCRIPTION |
|--------|------------|--|
| 1 | B6673401 | FILTER, WELDMENT PAN |
| 2 | B6671202 | FILTER, STRAINER CAP ASSEMBLY |
| 3 | B6677401 | FILTER, CLIP PAPER WELDMENT |
| 4 | B6664304 | FILTER, SUPPORT WELDMENT |
| 5 | B6672501 | FILTER, WELDMENT RAIL MOUNT LH |
| 6 | B6672502 | FILTER, WELDMENT RAIL MOUNT RH' |
| 7 | 60168302-C | WHEEL, 2" WITH AXLE AND NUT BULK PACK |
| 8 | PP11208 | WASHER, LOCK #10 SST (SPLIT) |
| 9 | P0112000 | BOLT, 10-24 X 1/2 HHC SST |
| 11 | A7030102 | FILTER, GUIDE PICK-UP TUBE |
| 12 | B6677601 | FILTER, TUBE PICKUP WELDMENT |
| 13 | PP10879 | O-RING MFR. NO 217-3107 |
| 14 | 60136301 | RING, EXTERNAL RETAINING 1-7/16" |
| 15 | 60132201 | HOSE, PTFE F SWIVEL X MPT |
| 16 | PP10485 | ELBOW, BLACK REDUCER 90 3/4 X 1/2 NPT |
| 17 | PP11338 | CORD, PLUG IEC-320 16-3 AWG 17.5 |
| 18 | PP10023 | SCREW, 10-24 X 3/8 SELF TAP |
| 19 | P7036013 | BUSHING, REDUCER HEX 3/4 X 1/2 NPT BLACK |
| 20 | P7037109 | NIPPLE, BLACK 1/2 X 10 |
| 21 | P0154100 | CLIP, HITCH PIN |
| 22 | P6071757 | VALVE, BALL 1/2NPT 3-WAY |
| 23 | P7037678 | ELBOW, BLACK 90 1/2 |
| 24 | P7037099 | NIPPLE, BLACK 1/2" X 5" |
| 25 | B6692801 | FILTER, DIVERTER VALVE HANDLE WELDMENT |
| 26 | P7037092 | NIPPLE, BLACK 1/2" X 1-1/2" |
| 27 | B6693101 | FILTER, ACTUATOR BRACKET WELDMENT |
| 28 | P0082400 | WASHER, LOCK #10 ZINC (SPLIT) |
| 29 | PP10828 | NUT, HEX (KEP) 5/16-18 ZINC |
| 30 | P0080750 | WASHER, FLAT 5/16 ZINC SAE |
| 31 | A7049301 | FILTER, PUMP PLATE |
| 32 | A7049601 | FILTER, PIPING CLAMP |
| 33 | P7037090 | NIPPLE, BLACK 1/2" CLOSE |
| 34 | 60155704 | ACTUATOR, LINEAR 2" 24VDC |
| 35 | 60047806 | PIN, CLEVIS 1/4 OD X 1" |
| 36 | 60047803 | PIN, CLEVIS 1/4 OD X 1-1/4" |
| 37 | A7097301 | FILTER, COVER PUMP |
| 38 | PP11261 | BOLT, 5/16 X 3/4 |
| 39 | 60143505 | MOTOR 115/230V 50/60HZ |
| | 60143506 | MOTOR 240V 50/60HZ |
| | 60143518 | MOTOR 208V 50/60HZ |
| 40 | 60143508 | PUMP, 4 GPM |
| 41 | A6653512 | FILTER HOSE 47.75 CPF65 OUT |
| 42 | B6677001 | FILTER SUPPORT INLET PG SG/SE FD/SF* |
| 43 | B6676001 | FILTER, PICKUP BLOCK SGF*, SG6H |
| 44 | 60068301 | O-RING, VITON 1" ID X 1.375 OD |

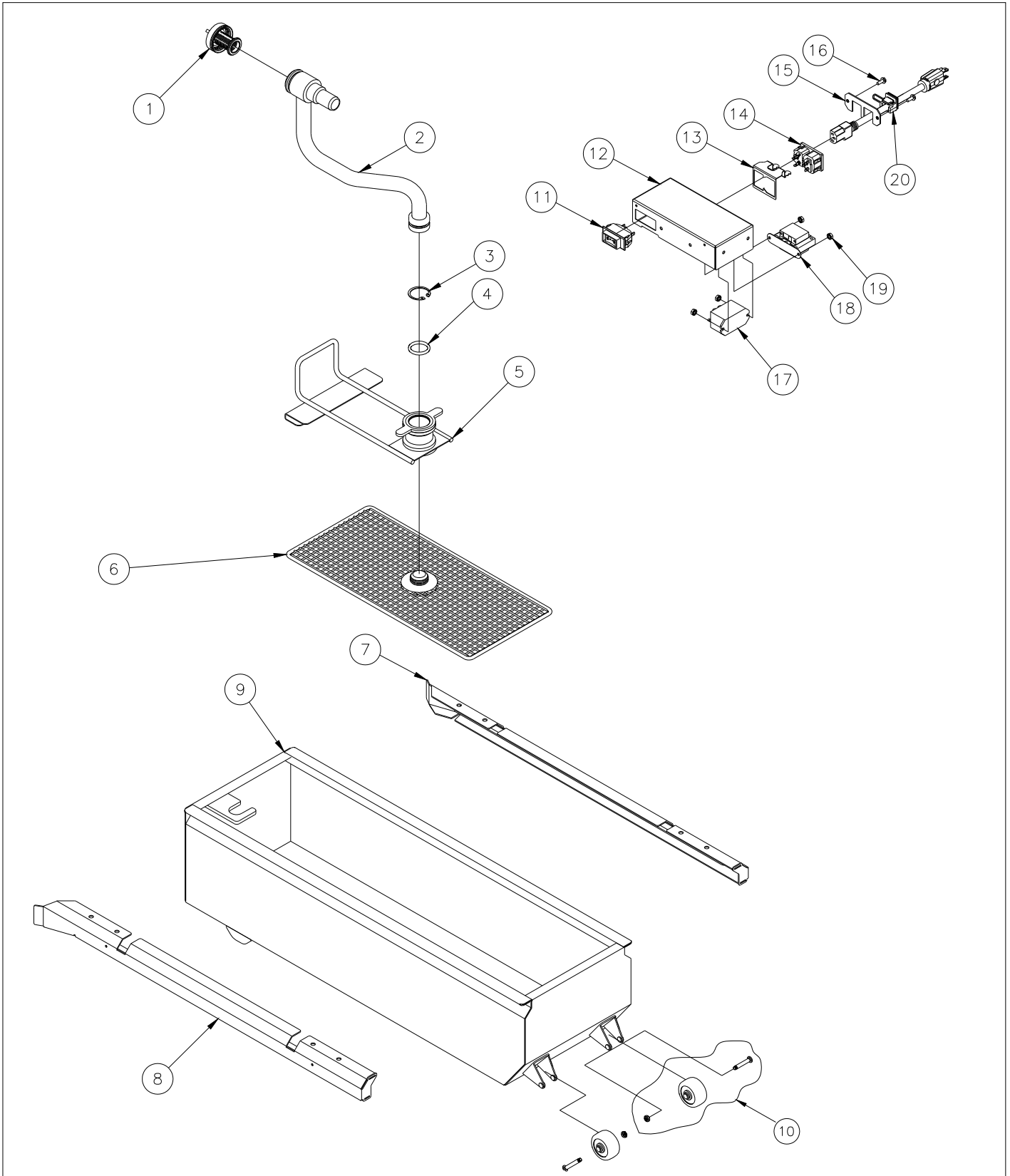
Filter Pan and Pump Detail



C.) Solo Filter Pan Parts List

| ITEM # | PART# | PART DESCRIPTION |
|--------|------------|---------------------------------------|
| 1 | B6671202 | FILTER, STRAINER CAP ASSEMBLY |
| 2 | B6673902 | FILTER, TUBE PICKUP WELDMENT SFSG14 |
| 3 | 60136301 | RING, EXTERNAL RETAINING 1-7/16" |
| 4 | PP10879 | O-RING MFR. NO 217-3107 |
| 5 | B6671102 | FILTER, CLIP PAPER WELDMENT |
| 6 | B6664303 | FILTER, SUPPORT WELDMENT |
| 7 | B6693702 | FILTER, MOUNT WELDMENT LEFT SIDE |
| 8 | B6693701 | FILTER, MOUNT WELDMENT RIGHT SIDE |
| 9 | B6670805 | FILTER, PAN WELDMENT SFSG14 |
| 10 | 60168302-C | WHEEL, 2" WITH AXLE AND NUT BULK PACK |
| 11 | 60077901 | CIRCUIT ROCKER SPST 250V 10A |
| 12 | A7028701-C | FILTER PUMP BOX SGF* |
| 13 | A7044001 | FLTR,STRN RLF PMP BOX DUAL |
| 14 | 60148401 | CONNECTOR POWER INLET & OUT IEC320 |
| 15 | A1844001-C | CABLE RETAINER SG |
| 16 | P0075400 | SCREW, 10-24 X 1/2 SELF TAP |
| 17 | P5045508 | SCR,10-24 X 3/8 TH PHILLIPS |
| 18 | 60130301 | TRANSFORMER,5VA 120V |
| | 60130302 | TRANSFORMER,5VA 240V |
| | 60130303 | TRANSFORMER,5VA 230V |
| 19 | P0092300 | NUT,HEX (KEP) 10-24 ZN |
| 20 | 60128501 | CORD,NEMA5-15P/IEC320 16-3 |

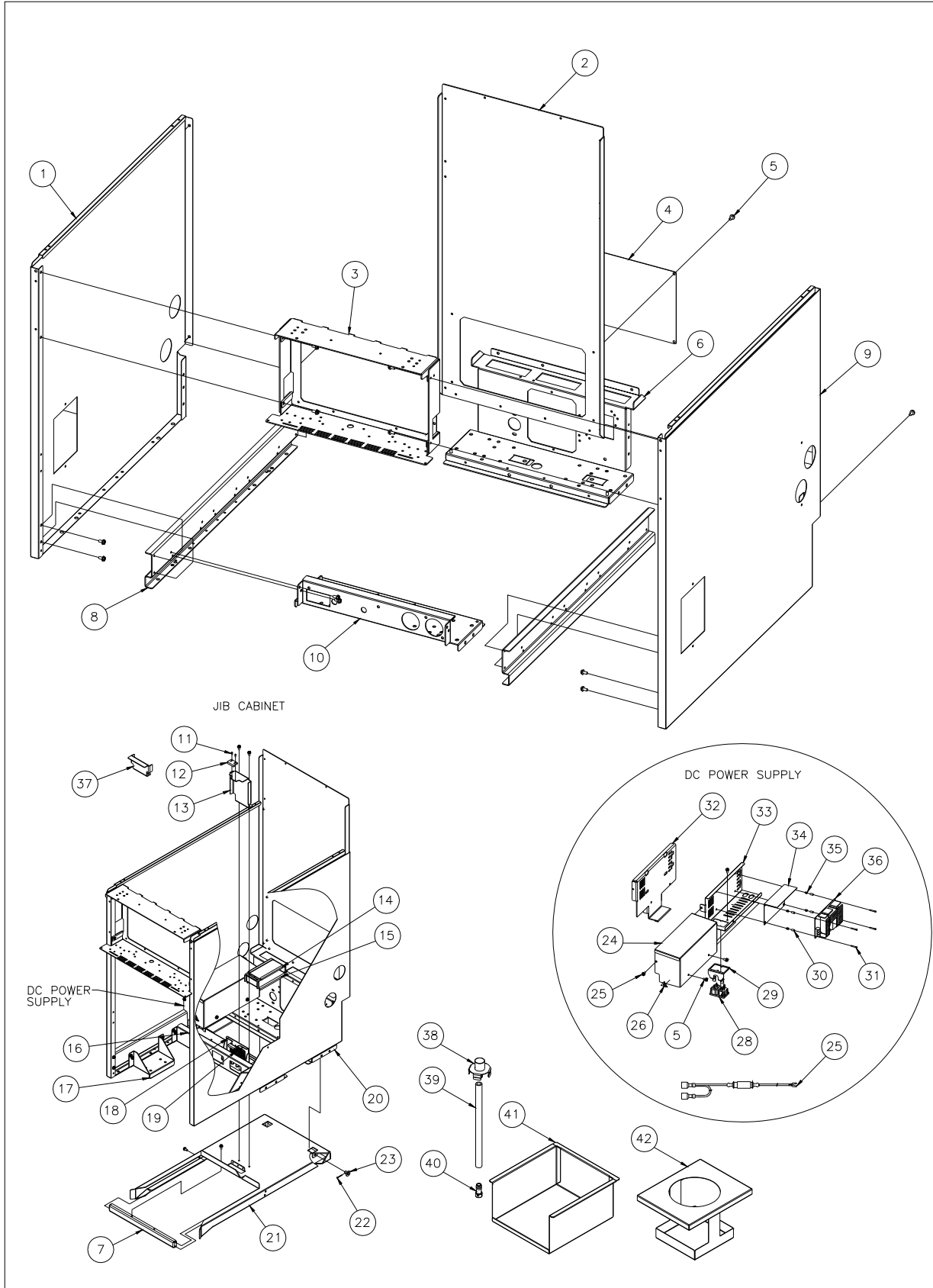
Solo Filter Pan Detail



D.) Cabinet Parts List

| ITEM # | PART# | PART DESCRIPTION |
|--------|----------------|--|
| 1 | A1541202 | CABINET SIDE, LEFT HAND |
| 2 | A1640801 | CABINET BACK, TOP |
| 3 | A1861501 | CABINET, SPACER |
| 4 | A1631401 | CABINET BACK, COVER SGH50, SGH50T |
| 5 | PP10023 | SCREW, 10-24 X .375" SELF TAPPING |
| 6 | A1640701 | CABINET BACK, BOTTOM S*LV WITHOUT JIB |
| 7 | A5073901 | ACCESSORIES, JIB PAN RAIL SUPPORT |
| 8 | A1540501 | CABINET SIDE, SUPPORT |
| 9 | A1541204 | CABINET SIDE, RIGHT HAND |
| 10 | A1238501 | CABINET, BOTTOM BRACE FRONT S*LV |
| 11 | 60066801 | SCREW, 4-40 X .250" RDH ZINC |
| 12 | B53050001 | ELECTRICAL ASSEMBLY, DVI |
| 13 | A5074201 | ACCESSORIES, JIB PROXIMITY SENSOR MOUNTING BRACKET S*LV |
| 14 | A5074301 | ACCESSORIES, JIB HOSE HOLDER UPPER |
| 15 | A5074401 | ACCESSORIES, JIB HOSE HOLDER LOWER |
| 16 | A1238201 | CABINET, BOTTOM BRACE JIB WEIGHING |
| 17 | A1238301 | CABINET, BOTTOM BRACE JIB SUPPORT |
| 18 | A5074201 | ACCESSORIES, JIB SPRING MOUNTING BRACKET |
| 19 | 60135202 | SPRING, EXTENSION .750" OD, .080 WIRE X 2.75" (DISCONTINUED AFTER 12/13) |
| 20 | A1640703 | CABINET BACK, BOTTOM S*LV WITH JIB |
| 21 | A5073801 | ACCESSORIES, JIB RAIL S*LV |
| 22 | P0190200 | PIN, COTTER EXT PRONG. .062 X .750 ZINC |
| 23 | B5052701 | ACCESSORIES, JIB RAIL MOUNTING PIN WELDMENT S*LV |
| 24 | A2043701 | CONTROL BOX, DC POWER HOUSING COVER |
| 25 | B6795701 | WIRING, DC POWER BOX S*LV |
| 26 | A6051201 | LABEL, HIGH VOLTAGE |
| 28 | 60148401 | CONNECTOR, POWER INLET & OUTLET IEC320 |
| 29 | A7044001 | FILTER, STRAIN RELIEF PUMP BOX DUAL IEC |
| 30 | 60117203 | SPACER, .126ID X .195 ODX .355L NYLON |
| 31 | PP11351 | SCREW, 4-40 X .750 ROUND HEAD SLOTTED ZINC |
| 32 | A2043901 | CONTROL BOX, DC POWER HOUSING BRACKET |
| 33 | A2043801 | CONTROL BOX, DC POWER HOUSING |
| 34 | 60175501 | INSULATION, DC POWER SUPPLY S*LV |
| 35 | 60092101 | NUTSERT, 4-40 UNC |
| 36 | 60155401 | POWER SUPPLY, 24VDC 150W |
| 37 | A5074201 REV D | (USED AFTER 2/17/14) ACCESSORIES, JIB PROXIMITY MOUNTING BRACKET |
| 38 | A5074701 | ACCESSORIES, JIB CAP STANDARD #35 JIB S*LV |
| 39 | A5075201 | ACCESSORIES, HOSE 1/2ID X 12.75L BRAIDED SILICON |
| 40 | A5074801 | ACCESSORIES, JIB HOSE WEIGHT S*LV |
| 41 | B5052401 | ACCESSORIES, JIB PAN WELDMENT S*LV |
| 42 | B5052601 | ACCESSORIES, SMALL JUG SUPPORT WELDMENT S*LV |

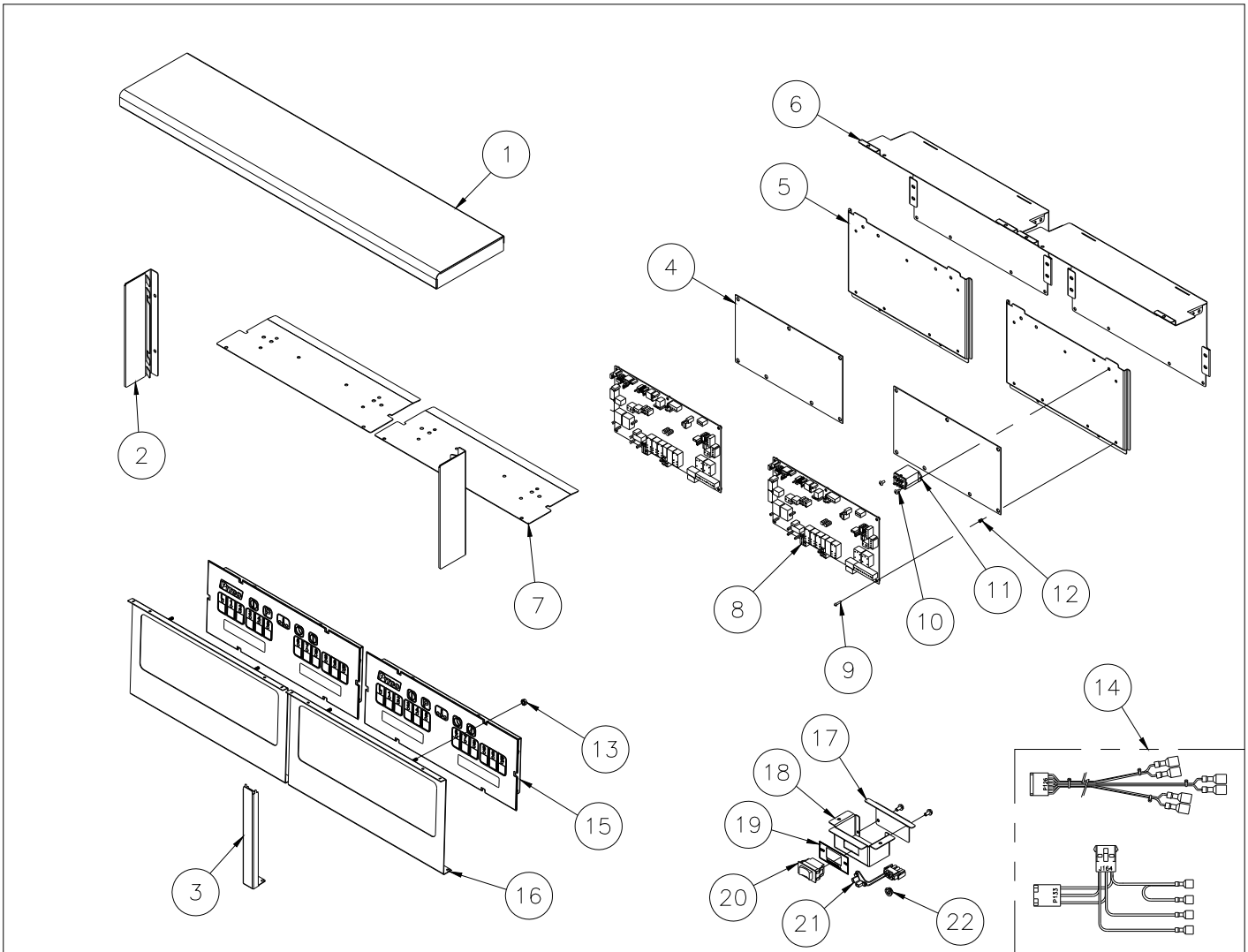
Cabinet Detail



E.) Top Deck & Control Panel Parts List

| ITEM # | PART# | PART DESCRIPTION |
|--------|-------------|--|
| 1 | B3638601 | FRONT PANEL, HEMMED TOP DECK ASSEMBLY S*LV-1 |
| | B3638602 | FRONT PANEL, HEMMED TOP DECK ASSEMBLY S*LV-2 |
| | B3638603 | FRONT PANEL, HEMMED TOP DECK ASSEMBLY S*LV-3 |
| | B3638604 | FRONT PANEL, HEMMED TOP DECK ASSEMBLY S*LV-4 |
| | B3638605 | FRONT PANEL, HEMMED TOP DECK ASSEMBLY S*LV-5 |
| 2 | A3685002 | FRONT PANEL,END CAP LH-RH S*LV |
| 3 | A3685702 | FRONT PANEL, MIDDLE CAP S*LV |
| 4 | 60186501 | INSULATION, AUTO FILTER BOARD #2 |
| 5 | A2042301 | CONTROL BOX, HEAT SHIELD WRB SGLV |
| 6 | A2042201 | CONTROL BOX, SSSLV14 |
| 7 | A3685301 | FRONT PANEL, HEAT SHIELD S*LV |
| 8 | 60183201 | PCB, AUTO FILTER BOARD #2 |
| | 60183201 | PCB, AUTO FILTER BOARD #2 DUAL |
| 9 | PP11312 | SCREW, 4-40 X .500 RDH ZN |
| 10 | PP10687 | SCREW, 6-32 X 313 THRUSS HEAD PHILLIPS ZN |
| 11 | PP11068 | RELAY, 24VDC DPDT WITH MOUNTING TABS |
| 12 | P0091400 | NUTSERT, 6-32 UNC |
| 13 | P0092300 | NUT, HEX KEP 10-24 ZN |
| 14 | B6801201 | WIRING,I12 TO AUTO FILTER BOARD #2 FBW RS485CO |
| | B6800901 | WIRING, GAS VALVE CONNECTOR HARNESS |
| | B6760501 | WIRING, HARNESS CLEAN SWEEP |
| | B6747001 | WIRING, RELAY BOARD NO BACKUP |
| 15 | 60149517-CL | COMPUTER,12+ FULL ROV UNCONFIGURED SERVICE |
| | 60149518-CL | COMPUTER,I12+ SPLIT ROV UNCONFIGURED SERVICE |
| 16 | B3638710 | FRONT PANEL, BEZEL WELDMENT ATO AUTOFILTER I12 |
| 17 | A2043601 | CONTROL BOX,COVER SWITCH TANK REFILL FULL |
| | A2043603 | CONTROL BOX,COVER SWITCH TANK REFILL SPLIT |
| 18 | A2043501 | CONTROL BOX,HOUSING SWITCH TANKK REFILL FULL |
| | A2043503 | CONTROL BOX,HOUSING SWITCH TANKK REFILL SPLIT |
| 19 | A6105601 | LABEL,TANK REFILL |
| 20 | B2007602 | CONTROL BOX, ASSEMBLY TANK REFILL SWITCH SPLIT |
| 21 | PP10654 | SWITCH, ROCKER SPST W/BK (1-0) |
| 22 | 60130401 | BUSHING, .512 HOLE DIAMETER |

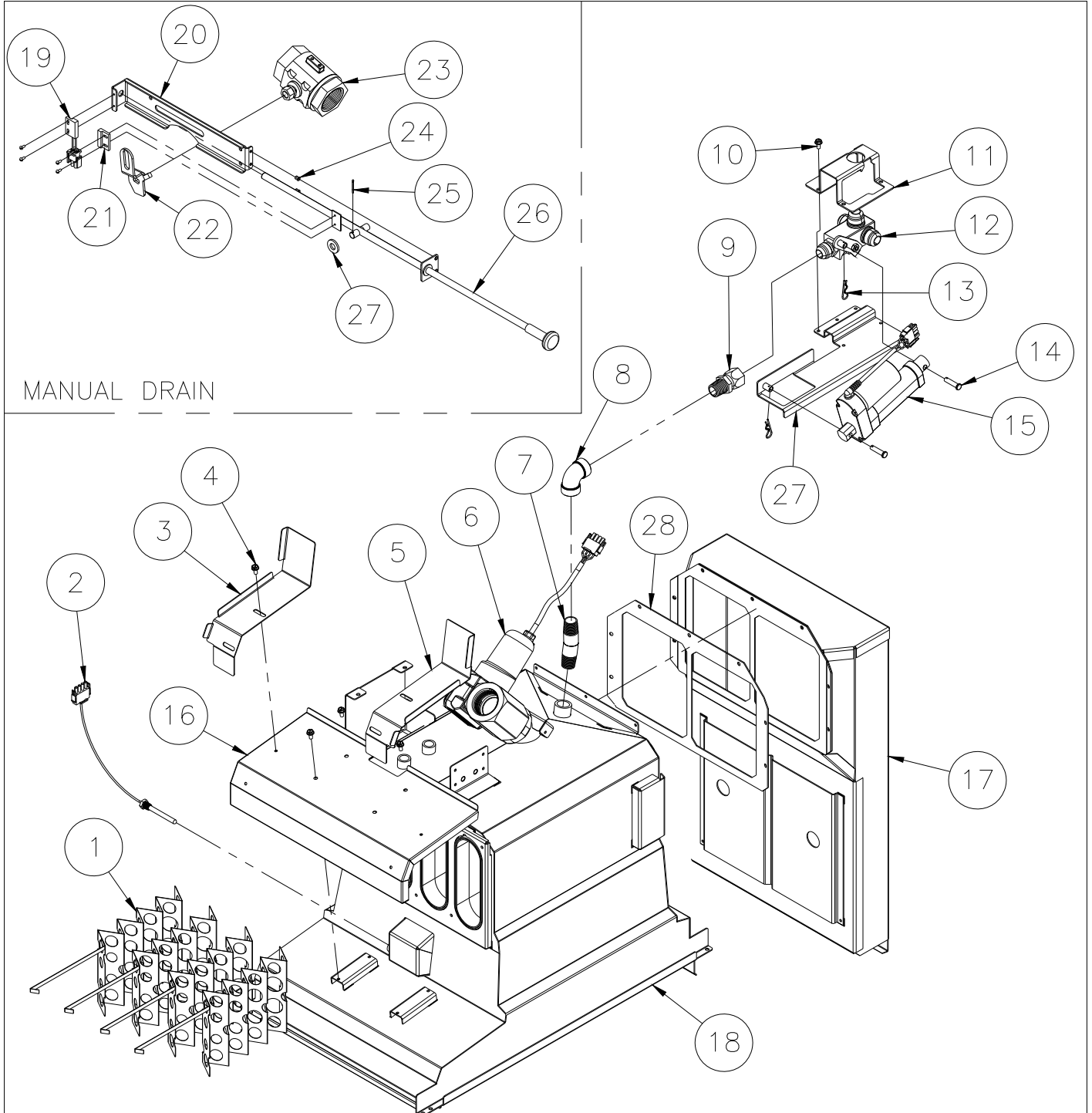
Top Deck & Control Panel Detail



F.) Tank & Flue Parts List

| ITEM # | PART# | PART DESCRIPTION |
|--------|----------|---|
| 1 | B1003601 | BAFFLE, WELDMENT DG |
| 2 | 60182701 | PROBE, OIL LEVEL SSSLV |
| 3 | A3372803 | TANK, HEAT SHIELD SIDE RH |
| 4 | PP10023 | SCREW, 10-24 X 3/8 SELF TAP |
| 5 | A3372801 | TANK, HEAT SHIELD SIDE LH |
| 6 | 60186601 | VALVE, BALL 1-1/4 FP POWERED |
| 7 | B6692101 | FILTER, RETURN ANGLE COUPLING |
| 8 | P7037678 | ELBOW, BLACK 90 .500 NPT |
| 9 | 60130101 | FITTING, ADAPTOR 37.5 FLARE X .5 MPT |
| 10 | B6693201 | FILTER, WELDMENT RETURN ACTUATOR MOUNT S*LV |
| 11 | A7049801 | FILTER, BRACKET ACTUATOR RETURN VALVE BOTTOM S*LV |
| 12 | B6693301 | FILTER, WELDMENT RETURN VALVE HANDLE |
| 13 | P0154100 | CLIP, HITCH PIN |
| 14 | 60047806 | PIN, CLEVIS .250 X 1.000, .06 PIN CRS |
| 15 | 60155704 | ACTUATOR, LINEAR 2" 24VDC |
| 16 | A3372702 | TANK, JACKET FRONT SSSLV14 |
| | A3372704 | TANK, JACKET FRONT SSSLV14T |
| 17 | B3507301 | FLUE, WELDMENT SSSLV14 |
| | B3507201 | FLUE, WELDMENT SSSLV14T |
| 18 | B3337001 | TANK, WELDMENT STANDARD SSSLV14 |
| | B3337002 | TANK, WELDMENT OIL LVL SENSOR SSSLV14 |
| | B3337901 | TANK, WELDMENT STF SSSLV14T |
| | B3337902 | TANK, WELDMENT OLP SSSLV14T |
| 19 | B5305001 | ELECTRIC ASSEMBLY DVI |
| 20 | A4027901 | HANDLE DRAIN BRACKET (LEFT HAND, VIEWED FROM FRONT OF FRYER) |
| | A4027903 | HANDLE DRAIN BRACKET (RIGHT HAND, VIEWED FROM FRONT OF FRYER) |
| 21 | PP10263 | SWITCH PROXIMITY |
| 22 | A4027802 | HANDLE DRAIN VALVE (LEFT HAND, VIEWED FROM FRONT OF FRYER) |
| | A4027804 | HANDLE DRAIN VALVE (RIGHT HAND, VIEWED FROM FRONT OF FRYER) |
| 23 | 60138701 | VALVE BALL 1-1/4 FP NON LOCKING |
| 24 | 60092101 | NUTSERT 4-40 UNC |
| 25 | P0190200 | PIN COTTER 1/16 X 3/4 ZN |
| 26 | B4007901 | HANDLE DRAIN VALVE SSSLV14* |
| 27 | B6693201 | FILTER WELDMENT RETURN ACTUATOR MOUNT S*LV |
| 28 | A3535901 | FLUE GASKET SSSLV14 |
| | A3535903 | FLUE GASKET SSSLV14T |

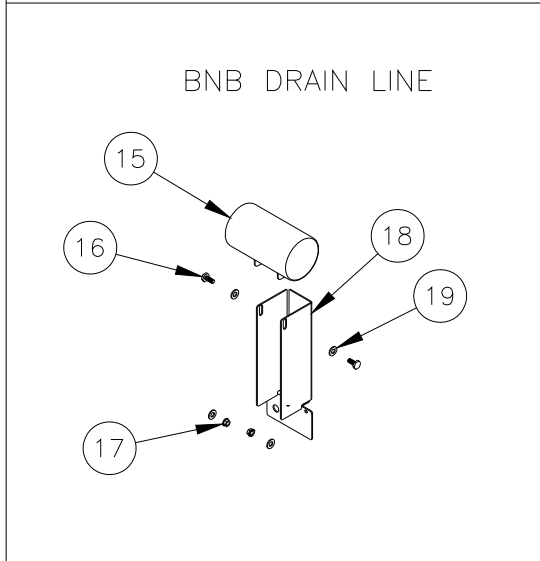
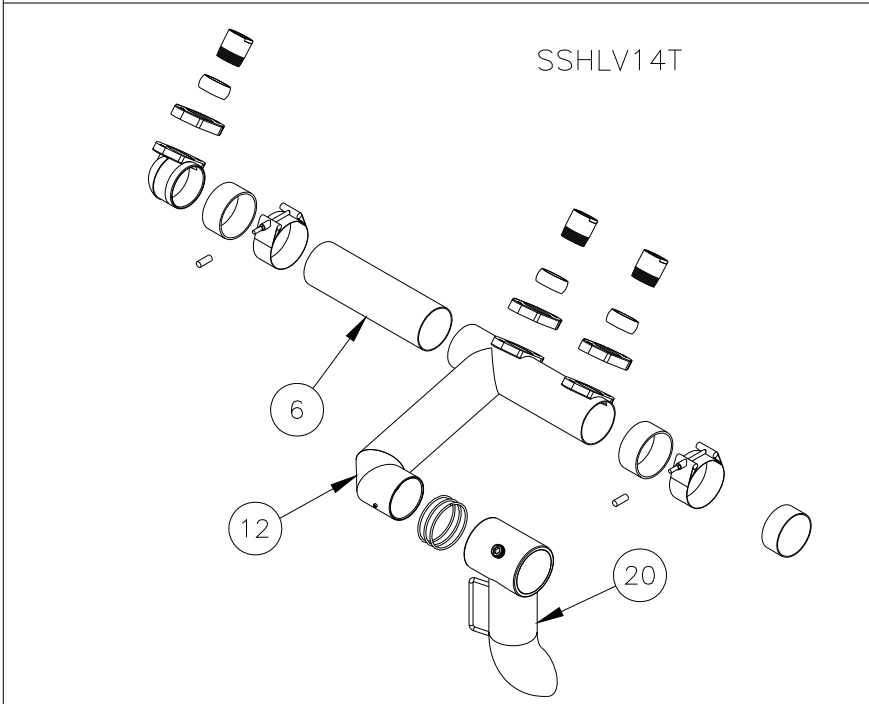
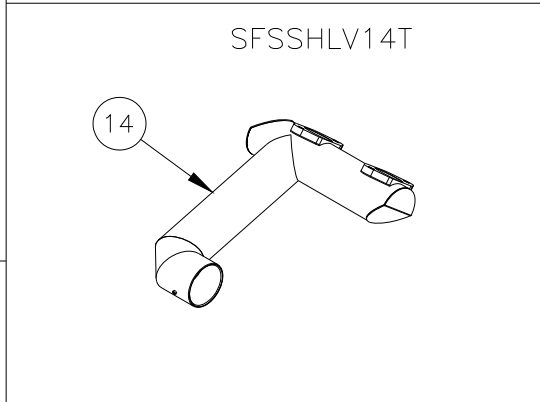
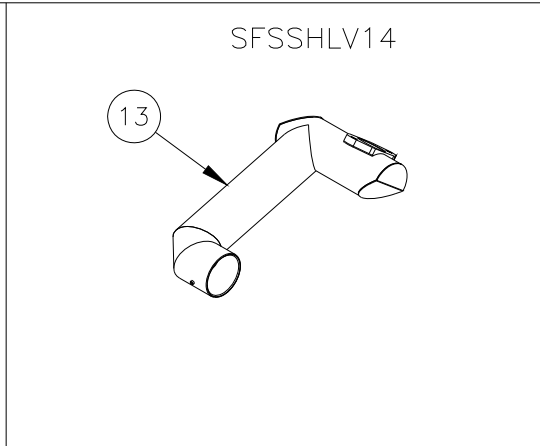
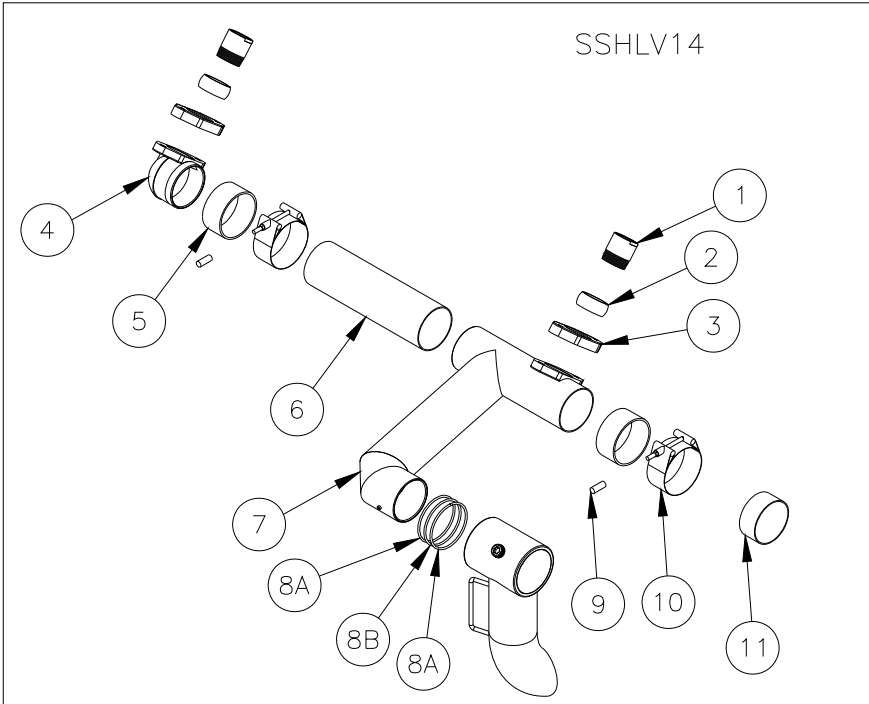
Tank & Flue Detail



G.) Drain Line Parts list

| ITEM # | PART# | PART DESCRIPTION |
|--------|----------|---|
| 1 | A7021701 | FILTER, NIPPLE ADAPTER |
| 2 | A7022101 | FILTER DRAIN SEAL FERRULE |
| 3 | A7022201 | FILTER DRAIN FLANGE |
| 4 | B6665101 | FILTER DRAIN ELBOW |
| 5 | 60059302 | DRAIN LINE GASKET |
| 6 | A7022453 | FILTER DRAIN LINE TUBE SSHLV14-SSHLV |
| | A7022455 | FILTER DRAIN LINE TUBE SSHLV14T-SSHLV |
| 7 | B6695001 | FILTER, DRAIN LINE WELDMENT |
| 8A | 60068303 | FLUROPOLYMER O-RING, 3" X 3.25 OD (WHITE) |
| 8B | 60068302 | VITON O-RING (BLACK) |
| 8C | 60068303 | FLUROPOLYMER O-RING, 3" X 3.25 OD (WHITE) |
| 9 | PP10177 | VINYL SCREW PROTECTION CAP |
| 10 | 60127702 | QUICK RELEASE BAND CLAMP |
| 11 | B6679501 | FILTER WELDMENT DRAIN LINE END CAPF |
| 12 | B6695201 | FILTER DRAIN LINE WELDMENT SSHLV14T |
| 13 | B6695401 | FILTER DRAIN LINE WELDMENT SSHLV14 SOLO FILTER |
| 14 | B6695301 | FILTER DRAIN LINE WELDMENT SSHLV14T SOLO FILTER |
| 15 | B6665501 | B-N-B DRAIN LINE |
| 16 | P0113300 | SCREW, 1/4 - 20 X 3/8 |
| 17 | PP10668 | ACORN NUT, 1/4 - 20 |
| 18 | A7049201 | FILTER BRACKET BNB DRAIN SUPPORT |
| 19 | P0080650 | WASHER, FLAT 1/4 |
| 20 | B6695101 | FILTER DRAIN LINE DOWN SPOUT SSHLV14* |

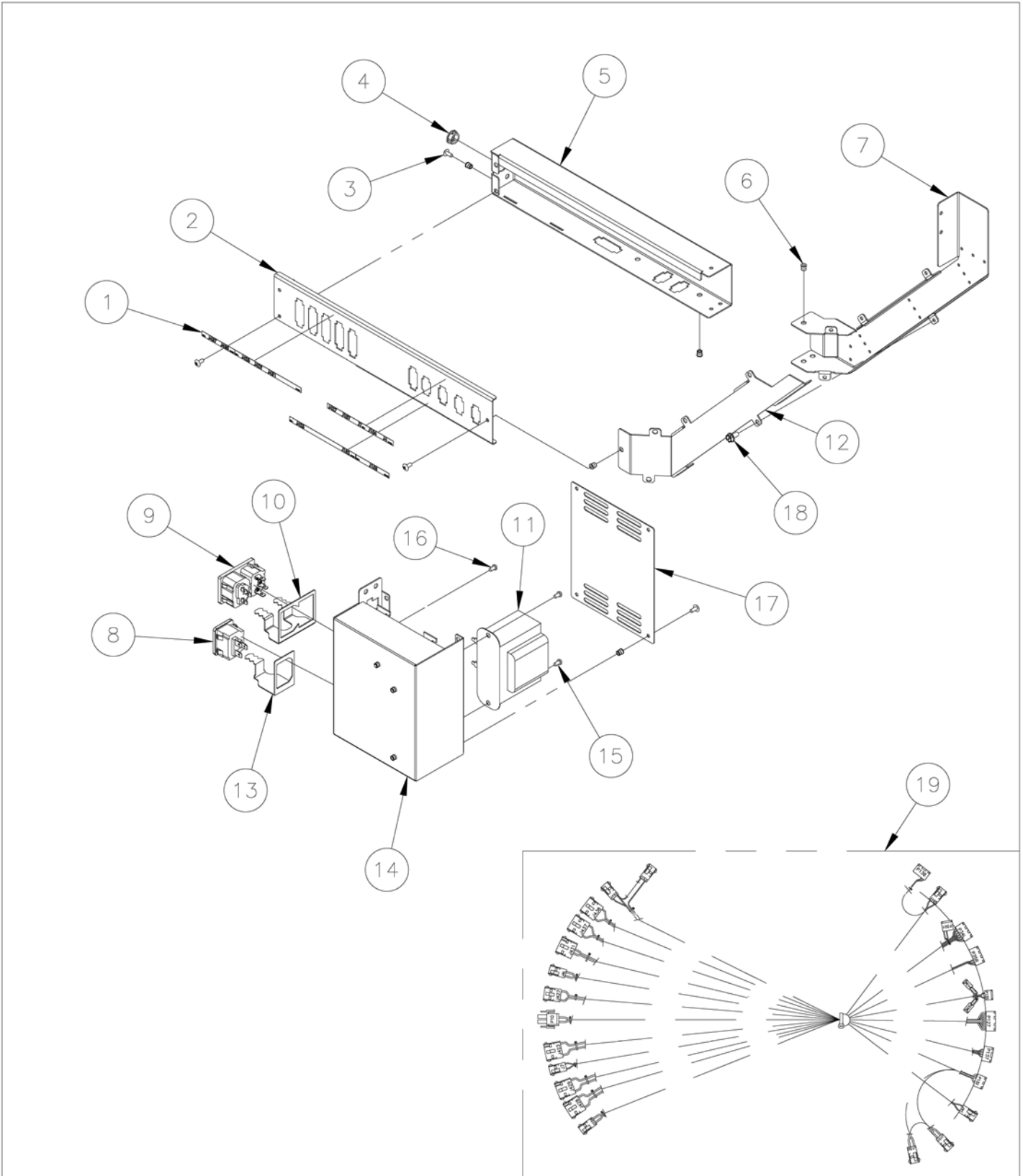
Drain Line Detail



H.) Entrance Box Parts List

| ITEM # | PART# | PART DESCRIPTION |
|--------|----------|---|
| 1 | A6103101 | LABEL CONNECTOR ID SSSLV14* |
| 2 | A2978101 | ENTRANCE BOX,RACEWAY BODY COVER |
| 3 | PP10687 | SCR,6-32 X 5/16 TH PHILLIPS |
| 4 | 60130401 | BUSHING .512 HOLE DIAMETER |
| 5 | A2978001 | ENTRANCE BOX RACEWAY BODY |
| 6 | P0091400 | NUTSERT 6-32 UNC |
| 7 | A2978301 | ENTRANCE BOX RACEWAY |
| 8 | PP11337 | RECEPTICLE 10A-250V IEC-320 SNAP IN |
| 9 | 60148401 | CONNECTOR POWER INLET & OUT IEC320 |
| 10 | A7044001 | FILTER STRAIN RELIEF PUMP BOX DUAL IEC |
| 11 | PP10429 | TRANSFORMER 80VA 120/208/240V TO 24V |
| 12 | A2978201 | ENTRANCE BOX RACEWAY VERTICAL GUIDE |
| 13 | A2965603 | ENTRANCE BOX,STRAIN RELIEF IEC RH |
| 14 | A2978401 | ENTRANCE BOX,POWER SUPPLY SSSLV14* |
| 15 | PP10686 | SCREW 6-32 X 1/4 ROUND HEAD PHILLIPS ZINC |
| 16 | PP10689 | SCR,6-32 X 1/2 RDH PHILLIPS ZN |
| 17 | A2978501 | ENTRANCE BOX,POWER SUPPLY COVER |
| 18 | PP10023 | SCREW 10-24 X 3/8 SELF TAP |
| 19 | B6800801 | WIRING CONTROL SSSLV |

Entrance Box View

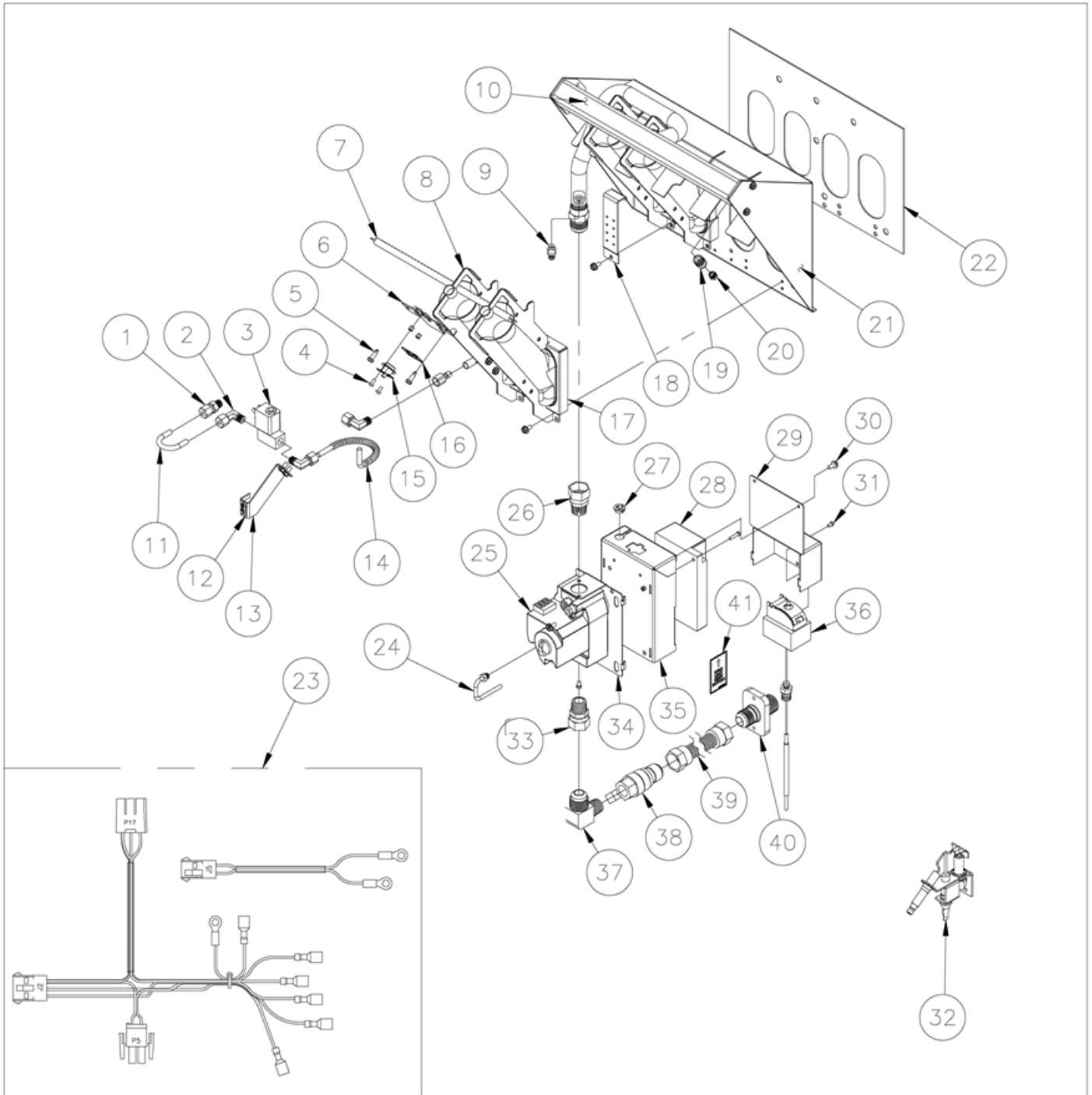




J.) Burner & Gas Supply Parts List

| ITEM # | PART# | PART DESCRIPTION |
|--------|------------------|--|
| 1 | PP10934 | FITTING, COMPRESSION BRASS STRAIGHT 1/4TU X 1/8MPT |
| 2 | P7037797 | FITTING, COMPRESSION ELBOW BRASS 1/4TU X 1/8MPT |
| 3 | 60148101 | VALVE, SOLENOID 24VAC |
| 4 | PP10687 | SCREW 6-32 X 5/16 TRUSS HEAD PHILLIPS ZN |
| 5 | P0075300 | SCREW 10-16 X 5/8 HEX HEAD SELF-DRILLING |
| 6 | A2036910 | SELF-CLEANING BURNER HIGH-LIMIT BRACKET SSSLV* |
| 7 | B8060101 | PIPING BURNER RUNNER TUBE SSSLV14 |
| | B8060102 | PIPING BURNER RUNNER TUBE SSSLV14T |
| 8 | SEE PARTS LIST B | BURNER |
| 9 | 60132801 | FITTING TEST PRESSURE PLUG 1/8-27 (CE) |
| 10 | SEE PARTS LIST B | BURNER MANIFOLD WELDMENT |
| 11 | A8039001 | PIPING, TUBING SCB SG |
| 12 | A6100501 | LABEL ROLLOUT RESET SWITCH |
| 13 | A2043001 | CONTROL BOX PILOT ORIFICE RETAINING BRACKET SSSLV14* |
| 14 | 60119010 | TUBE, FLEXIBLE WITHOUT FITTINGS 6 X 1/4 OD |
| 15 | 60147801 | THERMAL-LIMIT SWITCH WITH MANUAL RESET |
| 16 | A6099001 | LABEL SCB ROLLOUT RESET SWITCH SG |
| 17 | SEE PARTS LIST B | BURNER SHIELD |
| 18 | SEE PARTS LIST B | BURNER FLAME JUMPER |
| 19 | 60129701 | FITTING 1/4 MNPT X .344-32 UNS ORIFICE TIP BRASS |
| 20 | SEE PARTS LIST B | ORIFICE TIP |
| 21 | SEE PARTS LIST B | BURNER BRACKET |
| 22 | A8050901 | PIPING GASKET BURNER SSSLV14 |
| | A8050902 | PIPING GASKET BURNER SSSLV14T |
| 23 | B6800701 | WIRING EI MODULE HARNESS |
| | P5045113 | WIRE ASSY ELECTRIC IGN-HV |
| | B6783401 | WIRING IGN CABLE W/GND 20 IN |
| 24 | 60125901 | TUBE VENT GAS VALVE* |
| 25 | SEE PARTS LIST B | GAS VALVE |
| 26 | 60127601 | FITTING, ADAPTER FEMALE SWIVEL X 1/2 MPT |
| 27 | 60130401 | BUSHING .512 HOLE DIAMETER |
| 28 | 60181901 | CONTROL, IGNITION SPARK 24VAC CE |
| 29 | A8050701 | PIPING, IGNITION MODULE HI LIMIT BRACKET |
| 30 | PP10023 | SCREW, 10-24 X .375 SELF TAPPING |
| 31 | PP10686 | SCREW 6-32 X .250 ROUND HEAD PHILLIPS ZN |
| 32 | 60182601 | PILOT, INLINE ELECTRONIC IGNITION NATURAL |
| | 60182602 | PILOT, INLINE ELECTRONIC IGNITION PROPANE |
| 33 | 2908-0940501 | ORIFICE PILOT RUNNER TUBE |
| 34 | A8050601 | PIPING VALVE SHIELD BRACKET LH |
| | A8050603 | PIPING VALVE SHIELD BRACKET RH |
| 35 | A8050501 | PIPING VALVE SHIELD SPLASH GUARD SSSLV14 LEFT HAND |
| | A8050501 | PIPING VALVE SHIELD SPLASH GUARD SSSLV14T RIGHT HAND |
| 36 | PP10084 | SWITCH, HI-LIMIT LCM05030 |
| 37 | 60127401 | FITTING, ELBOW MALE FLARE X MALE PIPE THREAD |
| 38 | 60128101 | VALVE, GAS SUPPLY SHUTOFF |
| 39 | 60128015 | TUBING, FLEXIBLE WITH FITTINGS 22 GAS |
| 40 | A8029105 | COUPLING, GAS SUPPLY SHORT SG, MKG |
| 41 | A6104701 | LABEL HIGH LIMIT RESET |

Burner & Gas Supply Detail





Burner & Gas Supply Parts List B

| ITEM # | PART# | PART DESCRIPTION |
|--------|------------|--|
| 8 | B8037301-C | BURNER SLOTTED-FACE NATURAL |
| | B8037302-C | BURNER SLOTTED-FACE LP |
| | B8041901 | BURNER INCONEL 601 WIRE-FACE SCREEN NATURAL SCB & LP |
| 10 | B8060001 | PIPING BURNER CENTER TAP MANIFOLD WELDMENT SSSLV |
| | B8060301 | PIPING, BURNER MANIFOLD WELDMENT SSSLV14T |
| 17 | A8031703 | BURNER SHIELD NATURAL RIGHT-HAND SGM1824 |
| | A8034903-C | BURNER COLLAR LP FULL RIGHT-HAND SGM1824 |
| | A8031707 | BURNER SHIELD NATURAL RIGHT-HAND SGM24 |
| | A8034909-C | BURNER COLLAR LP FULL RIGHT-HAND SGM24 |
| | A8031711 | BURNER SHIELD NATURAL RIGHT-HAND SGM34 |
| | A8034913-C | BURNER COLLAR LP FULL RIGHT-HAND SGM34 |
| 18 | A8027701 | BURNER FLAME JUMPER SG14,SG14R,SG18,SG18F,SGC |
| | A8031601 | BURNER CROSSOVER SGM1824,SGM24,SGM34 |
| 20 | A7513708 | ORIFICE, 2.15MM |
| | A7513707 | ORIFICE, 1.90MM |
| | P6071357 | ORIFICE, #57 |
| | P6071356 | ORIFICE, #56 |
| | PP10862 | ORIFICE, 1.25MM |
| | P6071347 | ORIFICE, #47 |
| 21 | A8050801 | PIPING, BURNER BRACKET SSSLV14 |
| | A8051301 | PIPING, BURNER BRACKET SSSLV14T |
| 25 | 60113501-C | VALVE GAS VR8204 24V FAST NAT |
| | 60113502-C | VALVE GAS VR8204 24V FAST LP |
| | 60113503-C | VALVE GAS VR8204 24V FAST CE NAT |
| | 60113504-C | VALVE GAS VR8204 24V FAST CE LP |



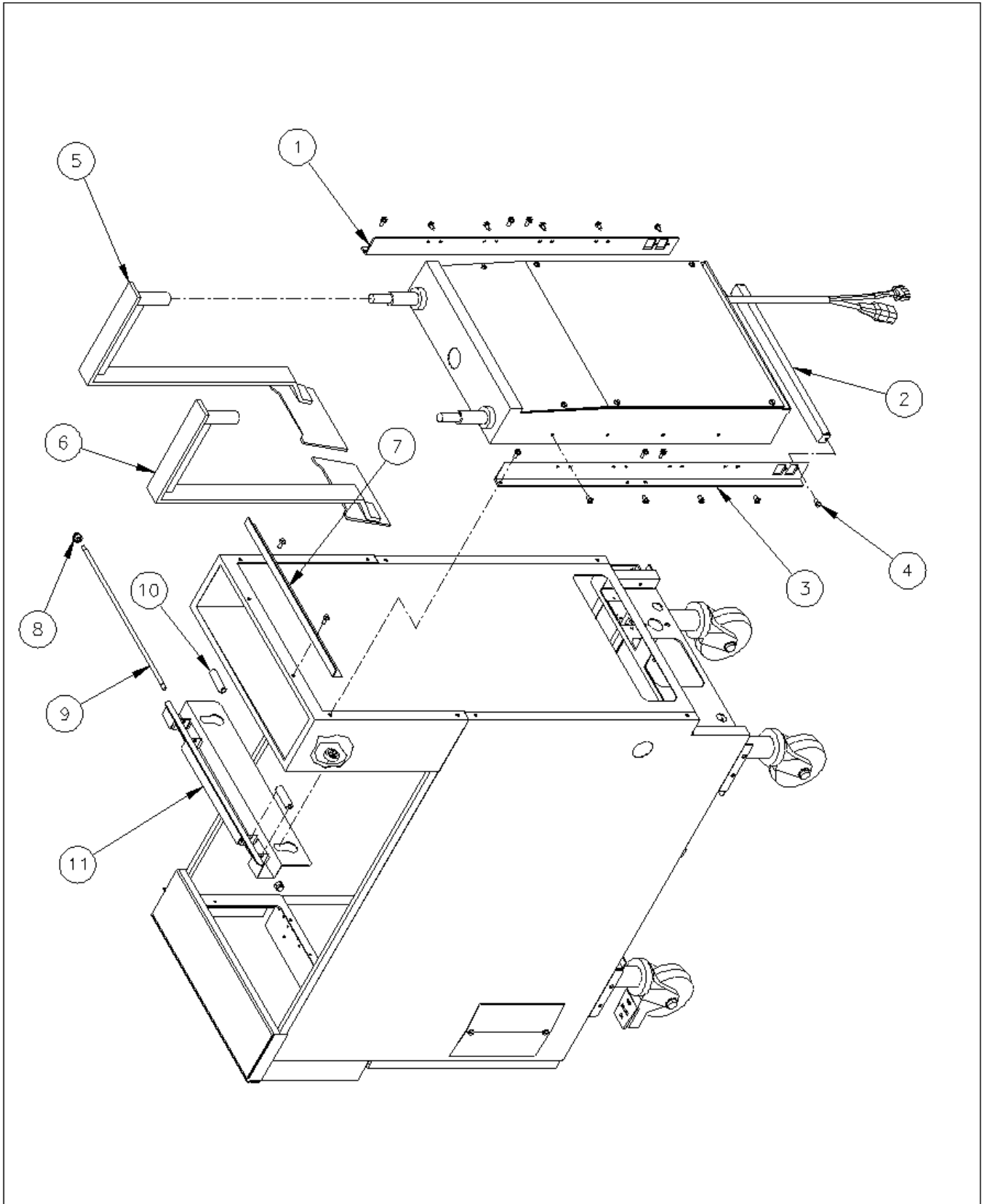
This Page Left Intentionally Blank



K.) Basket Lift Assembly Parts List

| ITEM # | PART# | PART DESCRIPTION |
|---|----------|--|
| 1 | A5624306 | BASKET LIFT MOUNT SIDE LEFT SSSLV14 |
| 2 | A5618302 | BASKET LIFT MOUNT BOTTOM SG |
| 3 | A5624308 | BASKET LIFT MOUNT SIDE RIGHT SSSLV14 |
| 4 | PP10023 | SCREW 10-24 X 3/8 SELF TAPPING |
| 5 | B5609401 | BASKET LIFT, PADDLE SSSLV14* LH |
| | B5609403 | BASKET LIFT, PADDLE SSSLV14T LH |
| 6 | B5609402 | BASKET LIFT, PADDLE SSSLV14* RH |
| | B5609404 | BASKET LIFT, PADDLE SSSLV14T RH |
| 7 | A5618502 | BASKET LIFT DRIP SHIELD SG |
| 8 | PP10668 | NUT ACORN W/CENTERLOCK 1/4-20 |
| 9 | A5617902 | BASKET LIFT HANGER SUPPORT AXLE SG |
| 10 | A5617801 | BASKET LIFT HANGER SUPPORT WHEEL SG |
| 11 | A5627402 | BASKET LIFT, HANGER SUPPORT SSSLV14* |
| 12 NOT SHOWN | B5604409 | BASKET LIFT HANGER SUPPORT ASSY SSSLV* (INCLUDES 8-11) |
| 13 NOT SHOWN (INCLUDES ALL ITEMS) | B5604512 | BASKET LIFT HANGER AND MOUNTING KIT SSSLV14 (INCLUDES 1-11) |
| | B5604513 | BASKET LIFT HANGER AND MOUNTING KIT SSSLV14T (INCLUDES 1-11) |

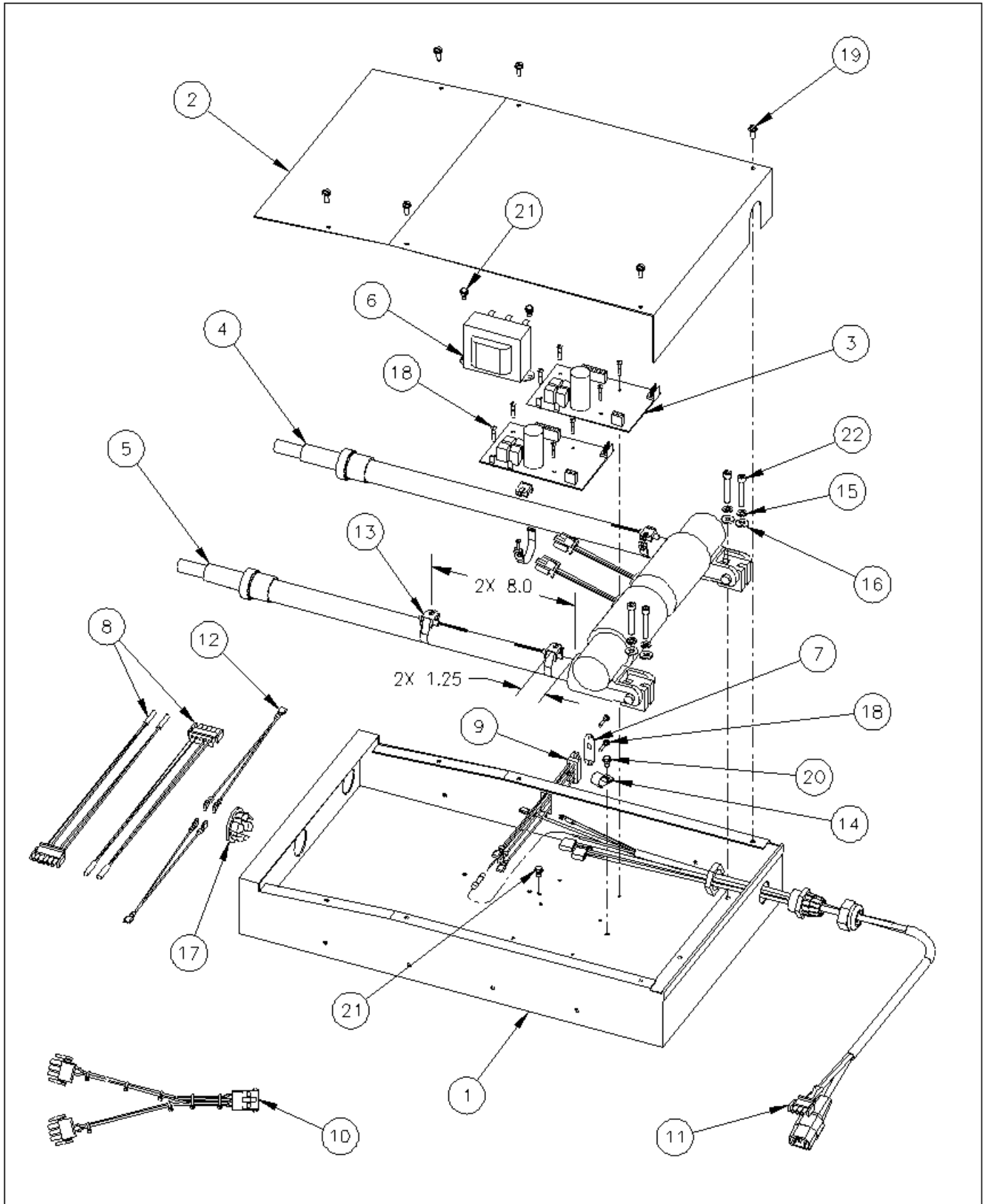
Basket Lift Assembly Detail



L.) Basket Lift Components Parts List

| ITEM # | PART # | PART DESCRIPTION |
|---|------------|---|
| 1 | B5605601 | BASKET LIFT BOX ACTUATOR MODULAR WELDMENT |
| 2 | A5619002 | BASKET LIFT BOX COVER ACTUATOR MODULAR |
| 3 | 60134001 | CONTROL BASKET LIFT DRIVER BOARD |
| 4 | 60134301 | ACTUATOR 25 3.3-9.4 24VDC 1IPS LEFT-HAND |
| 5 | 60134302 | ACTUATOR 25 3.3-9.4 24VDC 1IPS RIGHT-HAND |
| 6 | PP10429-M | TRANSFORMER 80VA 120/208/240V TO 24V |
| 7 | A2958102 | ENTRANCE BOX SWITCH COVER 120V |
| | A2958104 | ENTRANCE BOX SWITCH COVER 208V |
| | A2958106 | ENTRANCE BOX SWITCH COVER 220/240V |
| 8 | B5308901 | WIRING BASKET LIFT LIMIT SWITCH ACTUATOR |
| 9 | B6744901 | WIRING VOLTAGE SELECT 120/208/220-240V |
| 10 | B6748901 | WIRING HARNESS BASKET LIFT (SG14T) |
| 11 | B6779001 | WIRING BASKET LIFT MAIN ACTUATOR |
| 12 | B6779101 | WIRING BASKET LIFT TRANSFORMER ACTUATOR |
| 13 | 60136901 | CLAMP BASKET LIFT LIMIT SWITCH |
| 14 | P6071071 | CLAMP WIRE 3/8 NYLON |
| 15 | PP10673 | WASHER LOCK 1/4 SST SPLIT |
| 16 | N/A | WASHER FLAT 1/4 SST |
| 17 | N/A | HOLE PLUG KEYSTONE #7610 OR EQUIVALENT |
| 18 | N/A | SCREW 6-32 X 3/4 PHH PNH SST W/LK WASHER |
| 19 | P0075400 | SCREW 10-24 X 1/2 SELF TAPPING |
| 20 | PP10693 | SCREW 10-24 X 3/8 PHH TRH ZN |
| 21 | N/A | SCREW 10-24 X 3/8 INDT HEX W/EXT WASHER |
| 22 | N/A | SOCKET HEAD CAP SCREW 1/4-20 X 1-1/2 SST |
| 23 NOT SHOWN (INCLUDES ALL ITEMS) | B5604601-C | BASKET LIFT ACTUATOR BOX ALL VOLTAGES (NOT SHOWN) |

Basket Lift Components Detail





In the event of problems with or questions about your order, please contact the Pitco Frialator factory at

(603) 225-6684 World Wide
www.pitco.com

In the event of problems with or questions about your equipment, please contact the Pitco Frialator Authorized Service and Parts representative (ASAP) covering your area, or contact Pitco at the numbers listed to the left.

MAILING ADDRESS – P.O. BOX 501, CONCORD, NH 03302-0501
SHIPPING ADDRESS – 10 FERRY ST., CONCORD, NH 03301