

OPERATING INSTRUCTIONS

Manual Grill Tool Sharpener Model No. 164-B

Redi-Gril®



The Prince Castle manual grill tool sharpener gives a quick sharpened straight edge to scrapers and spatulas. Sharp spatulas pick up grilled meat cleanly without tearing the seared surface. Natural juices are kept in food for more flavor, and a more appetizing appearance. With precision edges cleanup is quick and easy without scratching. Plus, compact size of the manual grill tool sharpener saves valuable counter space.

SPECIFICATION

164-B	Dimensions
Length	16" (40.64 cm)
Width	5" (15.24 cm)
Height	7" (17.78 cm)
Shipping Weight	12 lbs (5.5 kg)

TABLE OF CONTENTS

	PAGE
Installation	2
Operating	2
Parts List	3
Troubleshooting	4
Non-scheduled Maintenance	4

LIMITED WARRANTY

This product is warranted to be free from defects in material and/or workmanship for a period of one year from date of original installation, not to exceed 18 months from date of shipment from our factory.

Any component which proves to be faulty in material and/or workmanship will be replaced or repaired (at the option of Prince Castle, Inc.) without cost to the customer for parts or labor.

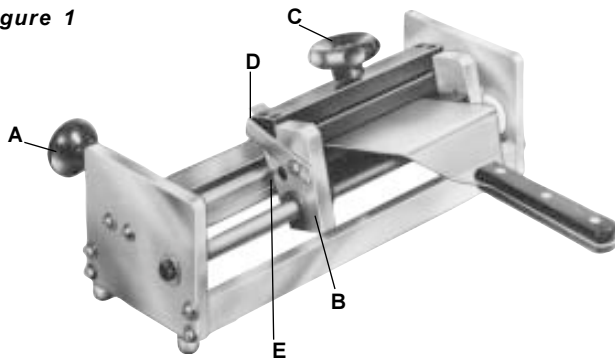
This warranty is subject to the following exceptions/conditions:

- Use of any non-genuine Prince Castle parts voids this warranty. All genuine Prince Castle replacement spare parts are warranted for ninety (90) days from date of purchase.
- Damage caused by carelessness, neglect, and/or abuse (e.g., dropping, tampering or altering parts), equipment damaged in shipment, by fire, flood or an act of God is not covered under this warranty.
- This unit is portable, charges for on location service (i.e. trip charges, mileage) are not included in the provisions of the warranty.

INSTALLATION

1. After you have removed the sharpener from the carton, inspect the unit for signs of damage. If there is damage to the unit:
 - Notify carrier within 24 hours after delivery.
 - Save carton and packing materials for inspection purposes.
 - Contact the Prince Castle Customer Sales Department at 1-800-722-7853 to arrange for a replacement to be sent.
2. Verify that all parts have been received.
3. Clean spatulas and scraper blades with soap and water. Dry thoroughly before sharpening.
4. Assemble knob (item A in figure 1) to back frame of sharpener.

figure 1



IMPORTANT: The knob can be assembled to either side of back frame depending if operator is left or right handed.

OPERATION

5. Turn carriage knob (item C in figure 1) counter-clockwise to open jaws.
6. Lift carriage assembly (item B in figure 1) by large knob (item C in figure 1) upward until it stops. Hold in this position.
8. Press gauge stop bar (item D in figure 1) tab downward until it makes contact with the socket head screw (item E in figure 1).
9. Insert meat spatula or grill scraper blade squarely against gauge stop bar (item D in figure 1).

IMPORTANT: Center spatula in carriage.

10. Tighten jaws by turning carriage knob (item C in

figure 1) clockwise while holding carriage in the up position. **NOTE: Do not over-tighten screw.**

11. Lift gauge bar (item D in figure 1) upward and hold in place with thumb.
12. Lower carriage assembly (item B in figure 1) with tool to rest on the file.
13. While holding carriage knob (item C in figure 1) with one hand and knob (item A in figure 1) with the other, slide carriage back and forth on file, applying moderate pressure. Continue until spatula has good sharp edge.
14. Remove sharpened tool and burn from back side by sliding along file.
15. Round corners by using a curve motion against the edge of the file. Use the bar as a guide.
16. Wash tool, sanitize and dry.

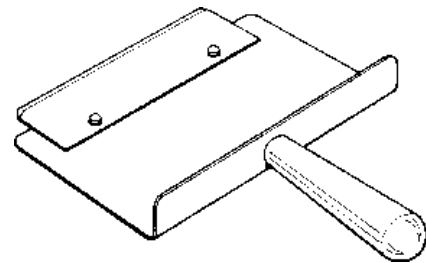


CAUTION: Handle tool carefully to avoid getting cut.

TO SHARPEN REDI-GRIL BLADES

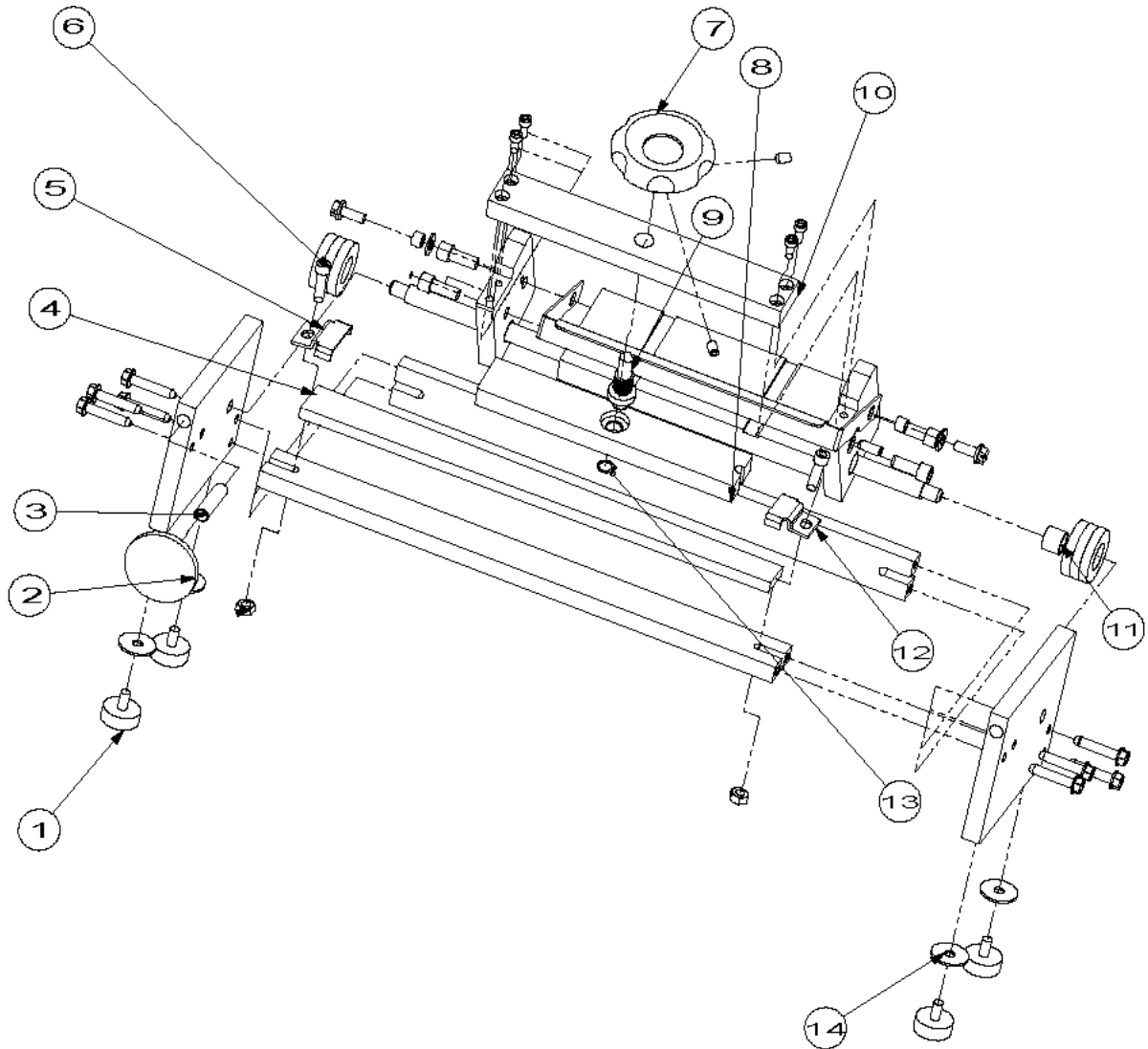
1. Place blade in special holder over pins with beveled side up. See figure 2.

figure 2



2. Hold blade with fingers and turn holder over.
3. Insert tool in carriage assembly against gauge stop.
4. Repeat steps three through 13 under operation.

EXPLODED VIEW



PARTS LIST

ITEM	PART NO.	DESCRIPTION	ITEM	PART NO.	DESCRIPTION
1	164-232S	Repl. Foot Kit (Pkg. of 4, incl. #14))	8	164-094S	Locking Jaw Mounting Bar Kit
2	164-60S	Hand Support Knob with Stud (incl. #3)	9	578-239S	Clamping Handle Stem Kit
3	164-60S	Hand Support Know with Stud (incl. #2)	10	164-093S	Mounting Bar Kit
4	164-098S	File & Clamp Kit	11	943-015S	Bearing Kit (pkg of 3)
5	164-70S	File Clamp Kit (incl. #12)	12	164-70S	File Clamp Kit (incl. #5)
6	164-39	Carriage Bumper	13	89-305S	Retaining Ring Kit (Pkg. of 5)
7	164-58S	Carriage Knob	14	164-232S	Repl. Foot Kit (Pkg. of 4, incl. #1)

Accessories (Not Shown)

- 86-350 File Cleaner
- 578-282S Scraper Blade Holder

TROUBLESHOOTING GUIDE

PROBLEM	PROBABLE CAUSE	CORRECTIVE ACTION
Tool edge not parallel.	Tool not lined up properly in carriage against gauge stop.	Reposition tool in carriage holder.
	File worn.	Reposition file to new surface. IMPORTANT: The file can be turned to four positions.

NON-SCHEDULED MAINTENANCE

Under normal conditions with proper use and cleaning, very little non-scheduled maintenance is required for this unit. However, this section provides procedures for checking and replacement of the various parts used within the cabinet in the event that it becomes necessary. Before replacement of any parts, refer to the troubleshooting guide above. This guide will assist in determining the cause of any malfunction to insure maintenance is required.

To change file or change to new position on existing file:

- A. Remove (2) screws. See item A in figure 3.
- B. Rotate file 180 degrees and/or turn file over.
- C. Tighten screws.

Note: For older style files with a tapered end, you must reverse the positions of the file clamps (Fig. 3, Item B) when turning the file 180 degrees.

figure 3*

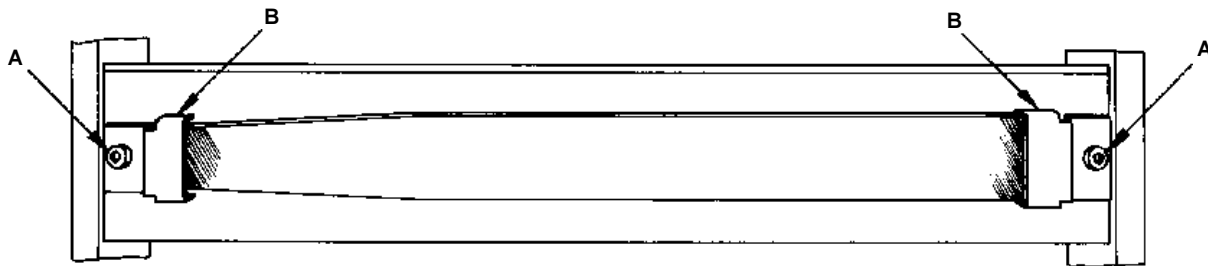
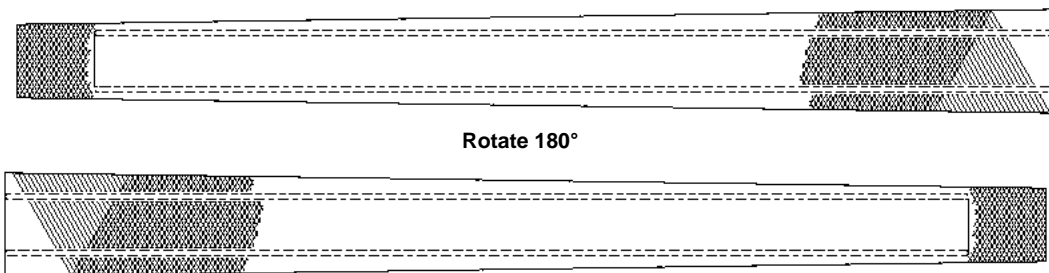


figure 4*



*Note: Figures 3 and 4 show the older style file with a tapered end. The newest style of file is straight. Straight files may be used to replace tapered files and include replacement file clips.