

# OPERATING INSTRUCTIONS

PRINCE CASTLE INC. 

## Vertical Contact Toaster 296-T14YUMH



TABLE OF CONTENTS	PAGE
Installation .....	2
Operation .....	2
Adjustments .....	3
Cleaning .....	4
Parts List .....	5-8
Troubleshooting .....	8
Wiring Diagram .....	8

### LIMITED WARRANTY

This product is warranted to be free from defects in material and/or workmanship for a period of 1 year from date of original installation, not to exceed 18 months from the date of manufacture.

Any component which proves to be faulty in material and/or workmanship will be replaced or repaired (at the option of Prince Castle, Inc.) without cost to the customer for parts and labor. This warranty covers on-location service (i.e. trip charges and/or mileage). Travel mileage is limited to 100 miles (200 Kilometers) round trip (one trip warranty) from an authorized service agency or its sub-service agency.

This warranty is subject to the following exceptions/conditions:

- Use of any non-genuine Prince Castle parts voids this warranty.
- All labor to be performed during regular work hours. Overtime premium (the incremental amount) will be charged to the customer.
- Damage caused by carelessness, neglect and/or abuse (e.g., dropping, tampering or altering parts, equipment damaged in shipment, by fire, flood or an act of God) is not covered under this warranty.
- All problems due to operation at voltages other than that specified on equipment nameplates are not covered by this warranty. Conversion to correct voltage is the customer's responsibility.
- This equipment must be serviced by Prince Castle Authorized Service Agency or a Prince Castle Service Technician during the warranty period.

### ELECTRICAL SPECIFICATIONS

Volts	Hz	Watts	Amps	Weight
115	50/60	1550	13.5	82 lbs

PRINCE CASTLE INC.   
WORLDWIDE

355 East Kehoe Blvd. • Carol Stream, IL 60188  
Tel: (630) 462-8800 • Fax: (630) 462-1460

## INSTALLATION

1. After you have removed the toaster from the carton, inspect the unit for signs of damage. If there is damage to the unit:
  - Notify carrier within 24 hours after delivery.
  - Save carton and packing material for inspection purposes.
  - Contact your Prince Castle dealer or the Prince Castle Customer Sales Department at 1-630-462-8800 if purchased directly.
2. Verify that all parts have been received.
  - Slim-Line Bun Toaster and conveyor assembly.
  - Release Sheet Kit—located in a 14" box.
  - Crumb Tray—taped to the front of the conveyor.
3. Place toaster on flat surface. Remove protective covering.
4. Lift conveyor off conveyor guide rails and set aside. Remove all packing materials (nylon tape, foam block, plastic coating on sheet metal, and black rubber packaging spacers) from conveyor and conveyor guides.

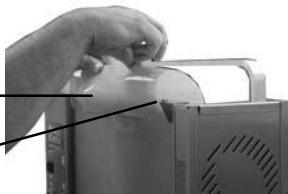
**Conveyor Guides**



5. Place the teflon sheet over the top of the platen housing, making sure to have three inches of overhang.

**3-inch Overhang**

**Release Sheet**



6. Slide the release sheet holding bracket onto the top of the platen housing.

**Holding Bracket**



7. Attach conveyor to the toaster by sliding the four pins (conveyor slides) on the conveyor housing into the four conveyor guides. Lower the conveyor housing until it is securely in place.
8. Hook the back end of the crumb tray onto the bar located below the conveyor assembly.
9. Plug unit into a properly grounded receptacle.

## OPERATION

1. Turn the Power switch to the "On" position. The orange indicator light will illuminate. Allow 45 minutes for platen to reach operating temperature.

**Power Switch**



2. Place a sample run of the product being toasted into the top of the conveyor housing. The side to be toasted should face the platen.

**Cut Side Facing Front**

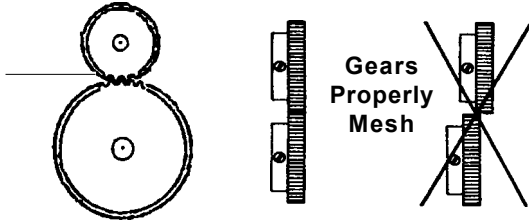


3. The toasted product will be dispensed automatically from the bottom of the conveyor assembly.
4. Verify that product meets acceptable standards. If not, see adjustment section.

# ADJUSTMENTS

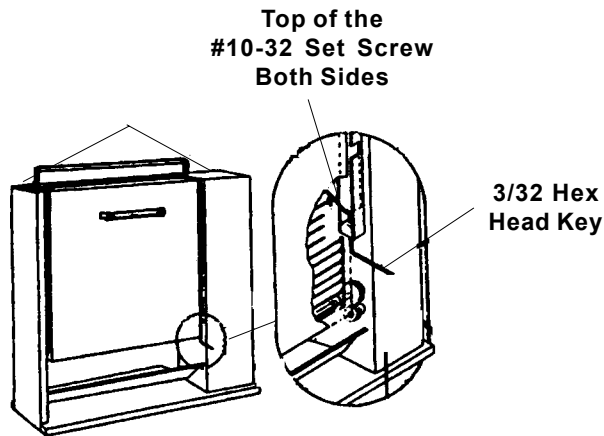
## Conveyor and Motor Gears:

There will be a small clearance between the conveyor gear and motor gear when properly aligned. Improper alignment will cause the conveyor to periodically bind.



Tools Needed: 3/32" Allen wrench  
Wicking grade thread locking fluid

1. Working from the "back side" of the toaster, loosening the 2 setscrews at the bottom of the conveyor guide until they are even with the conveyor stop. Note: the conveyor assembly may need to be removed for easier access.
2. Use the Allen Wrench to tighten the left setscrew (end housing side) until the setscrew just touches the conveyor slide.

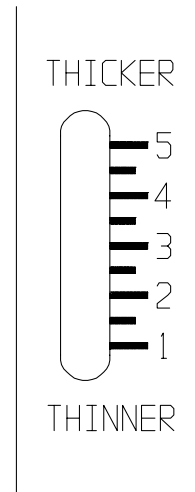
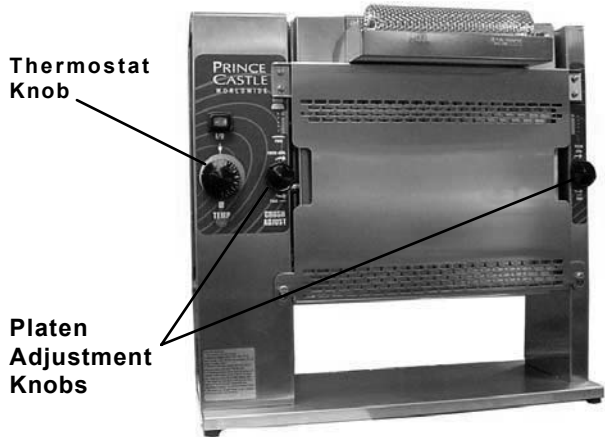


3. Tighten the right set screw (motor housing side) until the bottom of the conveyor housing is parallel to the top of the base.
4. Carefully tighten each setscrew another 1/2 turn.
5. Remove the conveyor assembly.
6. Apply a drop of wicking grade thread locking fluid to each setscrew.
7. Replace conveyor assembly

## Bun Compression:

The toaster platen can be adjusted to provide the necessary compression needed on various products.

- Turn the two platen adjustment knobs clockwise to compensate for use on thicker bread products. Turn the two platen adjustment knobs counter clockwise for thinner products. The numbers on the front of the end and motor housing will indicate the settings, 1 for thinnest product, 5 for thickest.



## Platen Temperature:

The temperature of the platen can be adjusted to compensate for darker or lighter toasting requirements.

- Turn the thermostat adjustment knob clockwise for darker toasting. Turn the thermostat adjustment knob counter clockwise for lighter toasting.

**IMPORTANT:** Allow 15 minutes for toaster to stabilize after adjusting the thermostat.

---

## CLEANING



**CAUTION:** This is not jet-water approved, and should not be cleaned with a water hose or jet spray.



**CAUTION:** Do not immerse in water.

1. Turn off both the heater and motor switches and unplug the toaster.
2. Allow platen to cool for 60 minutes before cleaning.
3. Remove the conveyor assembly.
4. Wipe the conveyor with a damp cloth. For the chain use a soft bristle brush.
5. Remove the release sheet and lay it on a flat surface. Thoroughly clean both sides with a damp cloth making sure all carbon build up is removed. Allow to air dry.

**IMPORTANT:** Rotate two sheets daily for longer life. Sheets last 4-6 months based on care and volume of product toasted.

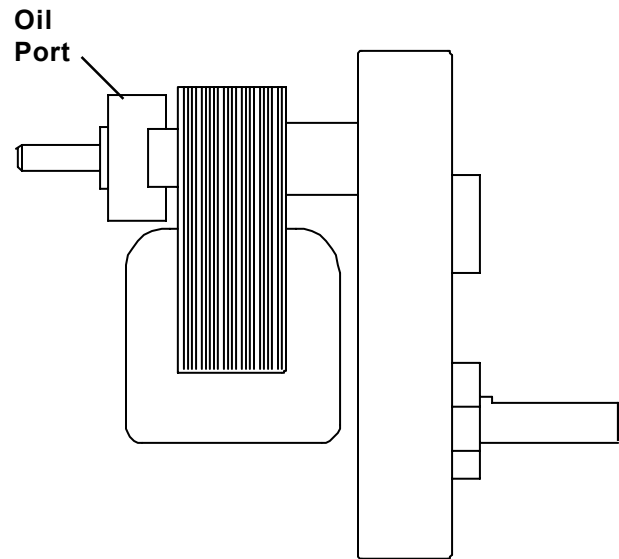
6. Use a damp cloth to remove any carbon build up on the platen surface.

**IMPORTANT:** Do not use sharp objects, scotch brite pads, scouring pads, or abrasive cleaners on the platen, or teflon release sheets as it will cause irreparable damage.

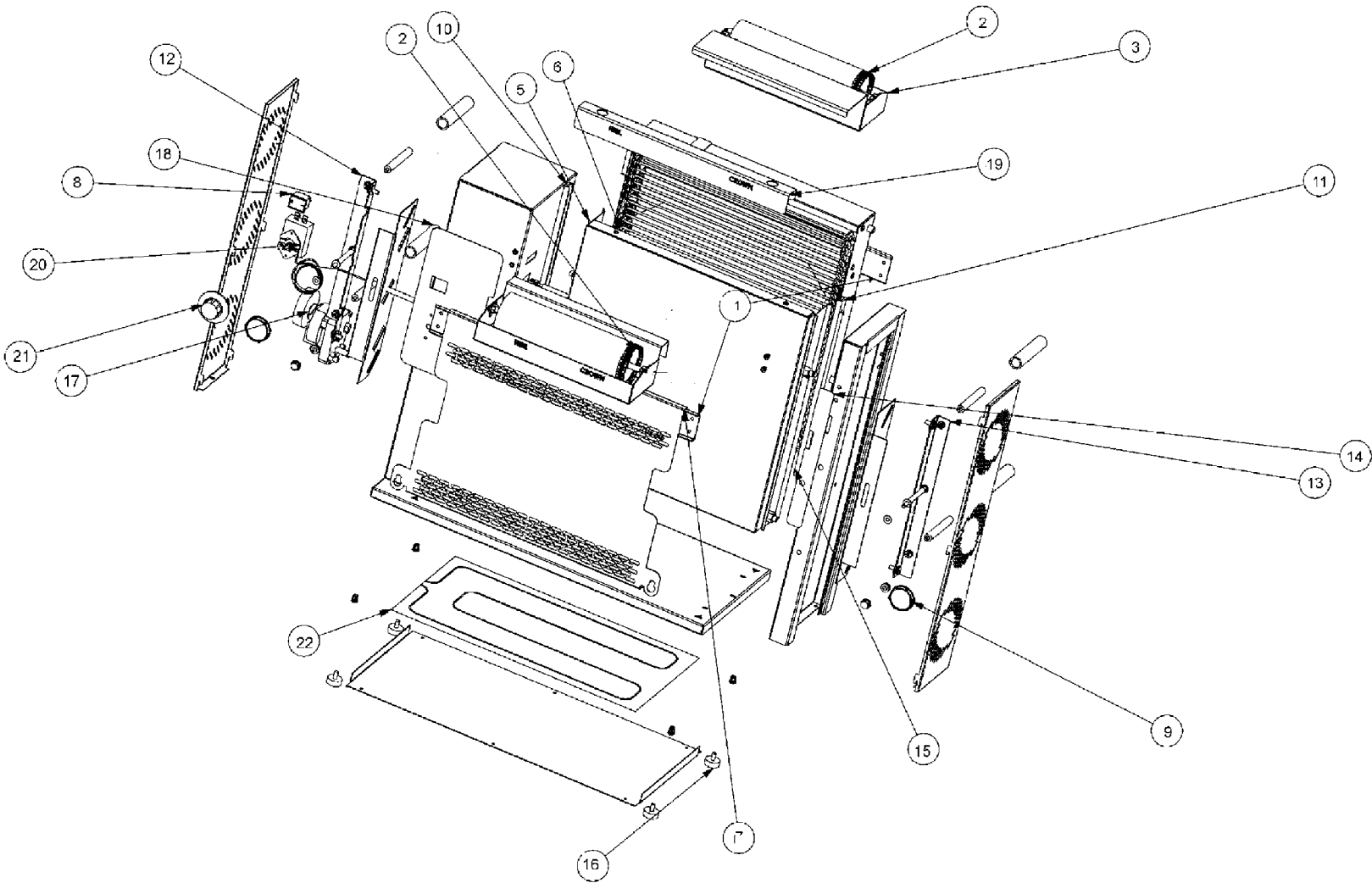
---

## PREVENTIVE MAINTENANCE (MOTOR)

**Note:** See the drawing for oil port hole location. To extend the life of your motor, have a factory authorized service technician add 2-3 drops high temperature motor oil on a monthly basis.

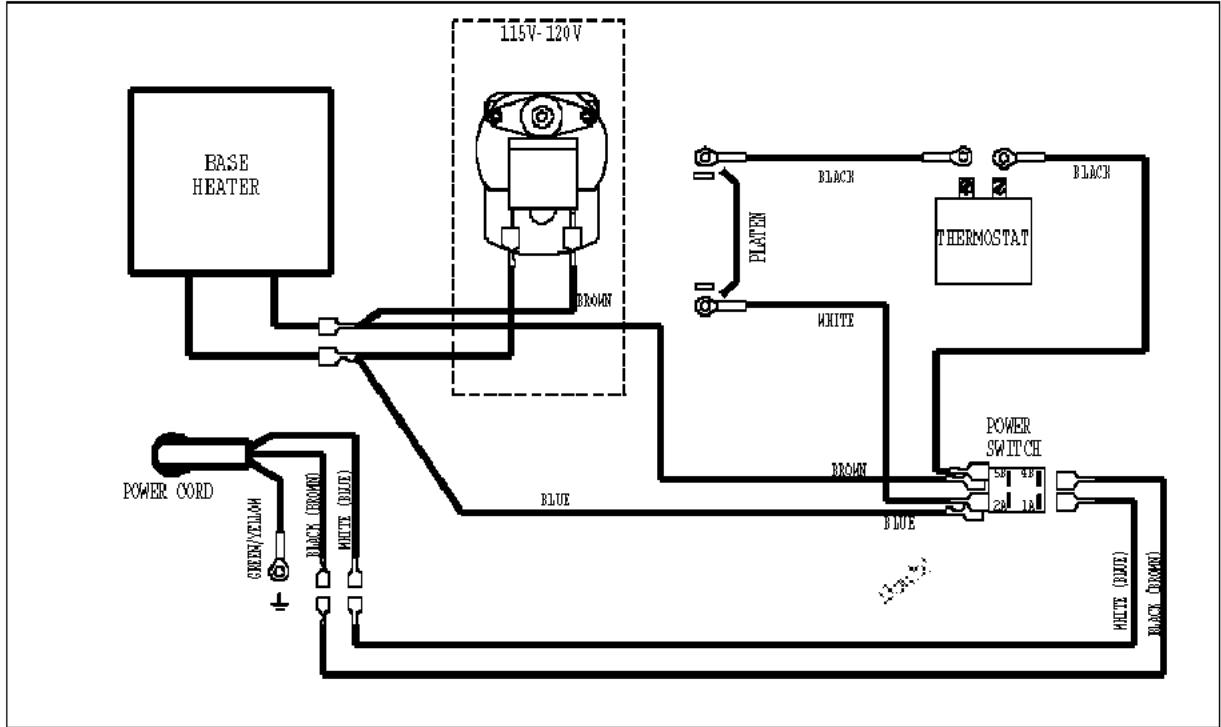


# EXPLODED VIEW



ITEM	PART NUMBER	DESCRIPTION	ITEM	PART NUMBER	DESCRIPTION
1	297-153S	Rear Supporty Bar	12	296-033S	Slide Plate, MTR
2	512-021S	Bun Dresser Assembly	13	296-034S	Slide Plate, End
3	512-021S	Bun Dresser Assembly	14	197-484S	Crush Overlay
4	297-120S	Platen Assembly, 115 V	15	197-16S	Conveyor Stop (Pkg of 2)
5	297-154S	Conveyor Adjustment Assy	16	197-232S	Foot (Pkg of 4)
6	296-017S	Heat Shield	17	87-029S	Motor, 115 V
7	78-233S	Rocker Switch	18	81-019S	Compression Spring (Pkg of 4)
8	197-185S	Knob (Pkg. of 2)	19	197-259S	Bar Clamp w/ Teflon Sheets
9	197-606S	Conveyor Guide, RH	20	297-010S	Thermostat w/ Knob
10	197-607S	Conveyor Guide, LH	21	70-012	Knob
11	197-026YS	Gear Kit (Not Shown)	22	296-012S	Heater, Base

# WIRING DIAGRAM



## TROUBLE SHOOTING

PROBLEM	CAUSE	SOLUTION
Unit will not heat up. Power rocker switch light off.	No power to unit.  Inoperable power cord. Loose connection on power switch. Inoperable power switch.	Ensure power cord is connected to proper Receptacle and the power inlet. Replace power cord. Tighten power switch connections. Replace power switch.
Unit will not heat up. Power rocker switch light on.	Inoperable thermostat. Inoperable platen.	Replace thermostat. Replace platen.
Unit heats up, but the conveyor does not run.	Loose motor switch connection. Inoperable motor. Stripped drive gear. Loose chain sprockets Gears not meshing.  Inoperable motor switch.	Tighten motor switch connection. Replace motor. Replace drive gear. Adjust and tighten sprockets. Adjust conveyor set screws (See Conveyor Adjustments on page 3). Replace switch.
Unit under and over heats (does not respond to thermostat adjustments).	Inoperable thermostat.	Replace thermostat.
Buns under or over done.	Check platen adjustment. (See Platen Adjustments on page 3).  Check platen temperature. (See Thermostat Adjustment on page 3).	Adjust platen for proper compression  Adjust thermostat for proper temperature.