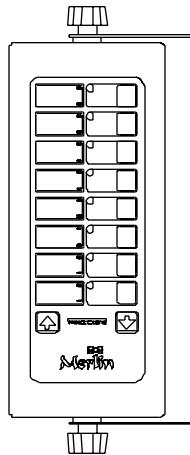


OPERATING INSTRUCTIONS

Merlin II

Slow Cook/Hold Timers Model No. 740-T, 740-TF & 740-TJ Series



Pictured Model 740-T88

<u>Model</u>	<u>Description</u>
740-T44	Four Channel
740-T66	Six Channel
740-T88	Eight Channel

ELECTRICAL

740-T Series	740-TJ Series
120 Volts	100 Volts
50-60 Hz	50/60 Hz

740-TF Series
220-240 Volts
50/60 Hz

TABLE OF CONTENTS

	PAGE
Installation	2
Programming	2
Operation	3
Cleaning	4
Parts List.....	4
Exploded View	5
Troubleshooting	5
Wiring Diagrams	6

LIMITED WARRANTY

This product is warranted to be free from defects in material and/or workmanship for a period of 1 year from date of original installation, not to exceed 18 months from the date of manufacture.

Any component which proves to be faulty in material and/or workmanship will be replaced or repaired (at the option of Prince Castle, Inc.) without cost to the customer for parts and labor. This equipment is portable; charges for on-location service (e.g., trip charges, mileage) are not included in the provisions of this warranty.

This warranty is subject to the following exceptions/conditions:

- Use of any non-genuine Prince Castle parts voids this warranty.
- All labor to be performed during regular work hours. Overtime premium (the incremental amount) will be charged to the customer.
- Damage caused by carelessness, neglect and/or abuse (e.g., dropping, tampering or altering parts, equipment damaged in shipment, by fire, flood or an act of God) is not covered under this warranty.
- All problems due to operation at voltages other than that specified on equipment nameplates are not covered by this warranty. Conversion to correct voltage is the customer's responsibility.
- This equipment must be serviced by Prince Castle Authorized Service Agency or a Prince Castle Service Technician during the warranty period.

INSTALLATION

- After you have removed the timer from the carton, inspect the unit for signs of damage. If there is damage to the unit:
 - Notify carrier within 24 hours after delivery.
 - Save carton and packing materials for inspection purposes.
 - Contact your local dealer or, if purchased directly, the Prince Castle Customer Sales Department at 1-800-722-7853 to arrange for a replacement to be sent.
- Verify that all parts have been received. Mounting Brackets and hardware provided.
- To mount the timer, place mounting brackets in desired location. Scribe location of mounting holes, center punch, and drill holes. Attach timer to mounting brackets placing star washer between bracket and timer.

DISPLAYS AND INDICATORS

TIME

Display Shows the time for the selected channel number.

H:M

Indicates the time value is in **H**ours and **M**inutes.

M:S

Indicates that the time value is in **M**inutes and **S**econds.

LED Indicators

Located above each channel timer button, these lights change color depending on the stage of the countdown. Green = first 70% of countdown, Yellow = next 20% countdown, Red = last 10% of countdown.

CONTROLS

Channel (Button)

Activates countdown sequence in the run mode.



SCAN/UP ARROW

In the program mode, it increases time values for each channel. In the Run Mode, it is used in conjunction with logo button to increase the volume.



SCAN/DOWN ARROW

In the program mode, it decreases time values for each channel. In the run mode, it is used in conjunction with logo button to decrease the volume.

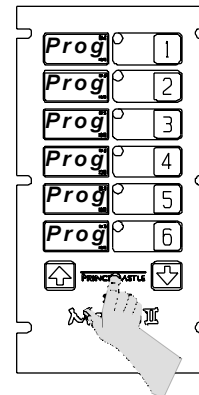
PRINCE CASTLE Logo

button to decrease the volume.

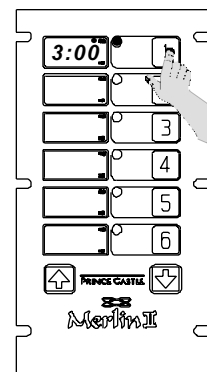
Activates Program Mode and used to adjust the alarm sound level.

PROGRAMMING

- Press and hold the **PRINCE CASTLE** logo for six seconds. The **TIME** displays will change from "----" to "**Prog**" and a beep will sound.

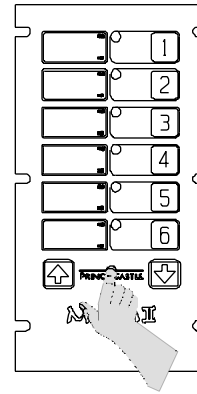
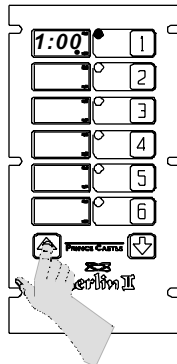
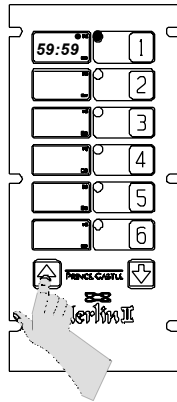


- Press the timer channel to be programmed. The LED indicator for the selected button will turn yellow and a beep will sound. The current programmed time for that channel will be displayed in the **TIME** display and the time value will indicate either **H:M** OR **M:S**.



- Press the **SCAN/UP Arrow** or the **SCAN/DOWN Arrow** button to change the program time for the selected channel.

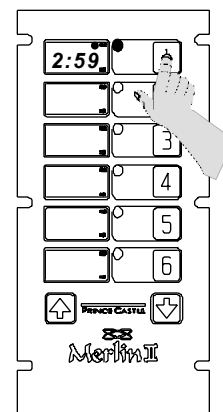
IMPORTANT: To change from Minutes and Seconds **M:S** to Hours and Minutes **H:M**. Press and hold the **SCAN/UP** Button. When the display reaches 59:59 it will automatically change to 1:00 Hour and the LED will switch from M:S to H:M. The program value for the **H:M** indicator is from 1:00 hour to 17 hours: 59 minutes.



6. You can change the sound level of the alarm in **RUN MODE**. Press and hold the **PRINCE CASTLE** logo; then, within six seconds, press either the **SCAN UP** Arrow button or the **SCAN DOWN** Arrow button. The **SCAN UP** Arrow button adjusts the sound level to the louder alarm, the **SCAN DOWN** Arrow button adjusts the sound level to the lower alarm.

OPERATION

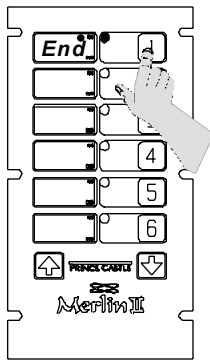
4. Press the desired channel button to program another channel. Repeat programming procedures in steps 2 and 3 above.
5. When finished programming each desired channel, momentarily press the **PRINCE CASTLE** logo to end the Program Mode. This saves the program changes you have made for all channels.



2. Press the desired channel button three times within five seconds to cancel an active timing cycle.

IMPORTANT: The channel timer button's multicolored LED indicator shows the status of the timer. The indicator has three colors: green, yellow, and red. The LED will be green during the first 70% of the countdown. It changes to yellow during the next 20% of the countdown. It will be red during the final 10% of the countdown, and will start flashing red once the time has run out.

3. The timer will countdown from the programmed value to zero. At zero, the display flashes **End** and the alarm sounds.



4. When the timing cycle is complete, and the alarm sounds, press the channel button to cancel the alarm.

PART LIST

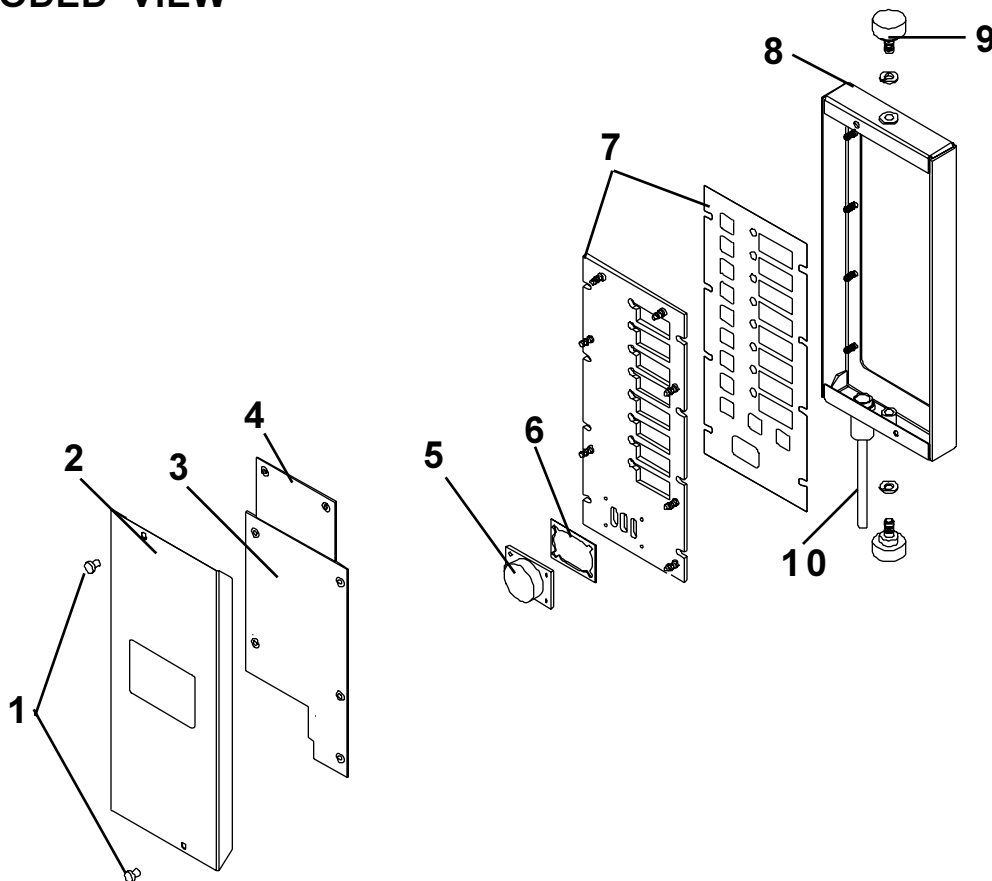
<u>ITEM</u>	<u>PART NUMBER</u>	<u>DESCRIPTION</u>
1	69-079S	Plastic Rivet (Pkg. Of 2)
2	740-030 740-034	Rear Cover (T88) Rear Cover (T44 & T66)
3	740-067S 740-065S	Main P.C. Board (T44) Main P.C. Board (T66 & T88)
4	740-077S	Wing Board (T88 Only)
5	88-653-2-4S	Speaker Assy.
6	541-135	Speaker Shim
7	740-026S 740-027S 740-028S 740-089S	Switch Panel Assy. (T88) Switch Panel Assy. (T66) Switch Panel Assy. (T44) Switch Panel Assy. (T66MC)
8	740-032 740-036	Front Cover (T88) Front Cover (T66 & T44)
9	70-048S	Knob W/Hardware
10	72-292S 72-293-04FS 72-293-01JS	Power Supply (110 Volt) Power Supply (220-240V) Power Supply (100 Volt)

CLEANING

1. Do not allow grease to build up on the timer, wipe it down daily with clean damp cloth.

IMPORTANT: Do not use abrasive or chemical cleaners on your timer, this may cause damage to the overlay.

EXPLODED VIEW



TROUBLESHOOTING GUIDE

PROBLEM	CAUSE	SOLUTION
A. No displays or indicators lit.	Unit unplugged. Store's circuit breaker blown. Defective transformer. Circuit inoperable.	Plug unit in. Reset breaker. Replace Main Circuit Board. Replace Main Circuit Board.
B. Absence of Audio Alarm.	Speaker inoperable. Circuit inoperable.	Replace Speaker. Replace Main Circuit Board.
C. Unit will not enter program mode. Display does not show " Prog ".	All channels are still counting. Logo Switch inoperable.	Wait until channels are in stop mode. Replace Switch Panel.
D. Unit enters program mode. Display shows " Prog ", but cannot change times.	The channel is still counting. Arrow Switch inoperable. Circuit inoperable.	Wait until channel is in stop mode. Replace Switch Panel. Replace Main Circuit Board.
E. Unable to start, stop, or store timer presets in program mode. Missing or abnormal characters in displays.	Circuit inoperable.	Replace Switch Panel. If problem persists, replace Main Circuit Board.

WIRING DIAGRAM 740-T44,T66 & T88

