

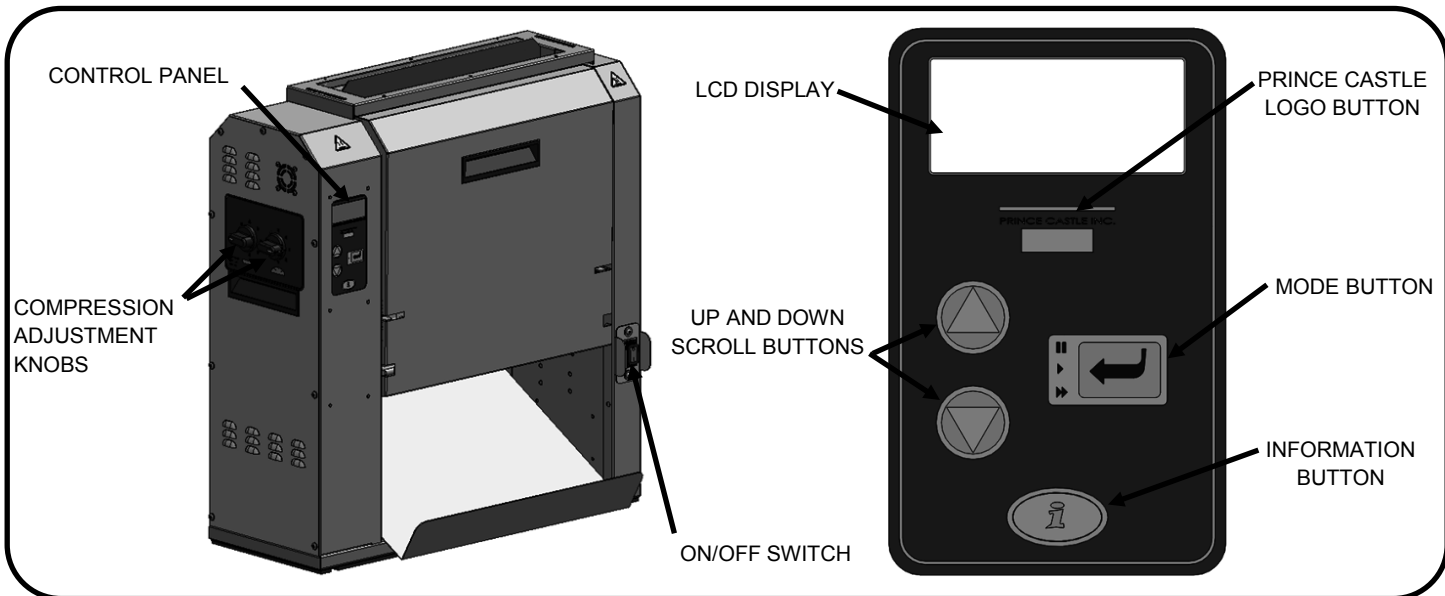
Operation Manual



Dual Continuous Feed Toaster

DCFT-BK

Product Identification



LIMITED WARRANTY

This product is warranted to be free from defects in material and/or workmanship for a period of (1) year from date of original installation, not to exceed 18 months from date of shipment from our factory. Any part or component which proves to be faulty in material and/or workmanship within the warranty period will be replaced or repaired (at the option of Prince Castle, Inc.) without cost to the customer for parts or labor.

This warranty is subject to the following exceptions/conditions:

- Use of any non-genuine Prince Castle parts voids this warranty and all work must be performed by an authorized Prince Castle Service Agent.
- All labor shall be performed during regular work hours. Overtime premium will not be covered.
- Travel charges are limited to 100 miles (200 kilometers) round trip, 2 hours travel time, one trip per repair.
- Damage caused by carelessness, neglect, and/or abuse (e.g., using wrong current, dropping, tampering with or altering electrical components, or improper cleaning) is not covered.
- Equipment damaged in shipment, by fire, flood or an act of God is not covered.
- Damage to non-stick coated surfaces is not covered by this warranty.

TABLE OF CONTENTS

Product Identification	1
Safety Information	2
General	2
Important	2
Electrical Specifications	2
Installation	2
Operation	4
Management Programming	5
Programming Diagram	7
Daily Planned Maintenance	8
Conveyor Adjustment	10
Troubleshooting	11
Exploded View and Parts List	12
Wiring Diagram	14
Declaration of Conformity	15



355 EAST KEHOE BLVD. ~ CAROL STREAM, IL, 60188, USA
 PHONE: 630-462-8800 ~ TOLL FREE: 1-800-PCASTLE
 FAX 630-462-1460 ~ WWW.PRINCECASTLE.COM

Dual Continuous Feed Toaster

DCFT-BK



Safety Information



WARNING

Indicates information important to the proper operation of the unit. Failure to observe may result in damage to the equipment and/or severe bodily injury or death.



WARNING

Indicates information important to the operation of the unit. Failure to observe may result in damage to the equipment.

General

This appliance is designed for toasting bread products in a commercial kitchen. The dimensions of the bread product are defined by customer.

Important

Prince Castle reserves the right to change specifications and product design without notice. Such revisions do not entitle the buyer to corresponding changes, improvements, additions or replacements for previously purchased equipment.

Electrical Specifications

208-240V, 50/60 Hz, 2150-3100W Single Phase

Installation

1

Unpack and inspect. Remove the unit from the carton and inspect for signs of damage. If there is damage to the unit:

- ⇒ Note the carrier within 24 hours of delivery.
- ⇒ Save carton and packaging materials for inspection purposes.
- ⇒ Contact your local dealer, or if purchased directly, the Prince Castle Sales Department at 1-800-722-7853 or 630-462-8800 to arrange for a replacement unit.

2

Verify parts. Verify that all parts have been received:

- ⇒ Dual Continuous Feed Toaster with two conveyors.
- ⇒ Release Sheet Kit.
- ⇒ Conveyor adjustment tool.

3

Place toaster on flat surface. Remove blue and/or white protective covering.



WARNING

Two man lift, unit weight >100 lbs. (45 kg).

4

Remove packing. Remove the cardboard spacer holding the conveyors up for shipping.



WARNING

Equipment must be elevated from the floor at all times during cleaning and operation.

5

Remove bun infeed by lifting from toaster.



6

Open conveyors.

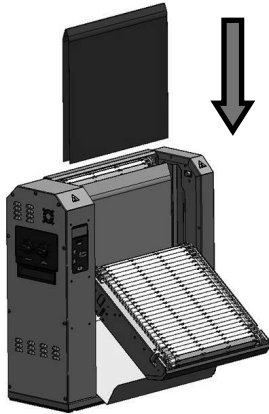
Lift each conveyor up and out. Set conveyors down and remove all packing materials from the conveyors and from the interior of the units.



Installation (Continued)

7

Install release sheet. Place Teflon release sheet over the platen.



9

Plug unit in. Plug unit into a grounded receptacle with a matching plug configuration.



WARNING

All electrical connections must be in accordance with local electrical codes and any other applicable codes.

This appliance can be used by children aged from 8 years and above and persons with reduced physical, sensory or mental capabilities or lack of experience or knowledge if they have been given supervision or instruction concerning use of the appliance in a safe way and understand the hazards involved. Children shall not play with the appliance.

8

Close conveyors. Lift one conveyor, lining up its top mounting guides with the top conveyor mounting pins on the unit. Slide the conveyor in and down until it is securely in place. Repeat with the other conveyor.



Dual Continuous Feed Toaster

DCFT-BK

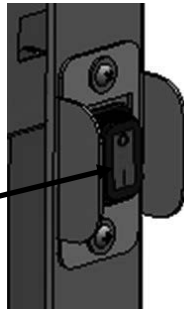


Operation

1

Turn unit ON.

Turn the On/Off switch located opposite the display panel to ON. The Prince Castle DCFT screen will appear in the LCD display for 3 seconds.



2

Wait through Warm-Up.

During warm-up, the LCD display will read "STATUS" and "WARMING..."

Warm-Up time is about 10-15 minutes.



3



WARNING

BURN/ELECTRICAL SHOCK HAZARD!

Platen sections are **HOT** and can cause severe burns or severe shock. Keep hands and objects out of the toaster unit! Failure to exercise caution may result in serious injury! Turn the unit off, unplug it and let it cool down completely before touching or working on internal apparatus.

Watch for **READY** status.

When ready temperature is reached, the LCD display will read "STATUS" and "READY".



4

Observe conveyor. Conveyors have been adjusted at the factory. However, if their motion appears jerky or you hear a "skipping" sound, the gears may have been disturbed. See *Conveyor Adjustment* for details.

5

Observe conveyor.

Conveyors have been adjusted at the factory. However, if their motion appears jerky or you hear a "skipping" sound, the gears may have been disturbed. See *Conveyor Adjustment* for details.



6

Rear Compression Adjustment Knob

Choose the compression adjustments.

Dial the two front compression adjustment knobs for the products part (Regular Crown, etc.) that you will be toasted in the front of the unit. Dial the two rear compression adjustment knobs for the product part (Regular Heel, etc.) that you will be toasting in the rear of the unit.

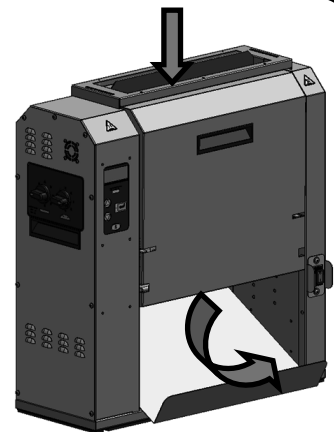
Front Compression Adjustment Knob



7

Begin continuous feeding.

Feed product into top of DCFT, sending the correct product parts down the front and rear of the unit. The sides to be toasted should face the platen. Toasted product will exit at the base of the DCFT.



Management Programming

- 1 Enter program screens.** Press and hold the PRINCE CASTLE logo button for 6 seconds. The PROGRAMMING VERSION screen will appear in the LCD display for 10 seconds. From the PROGRAMMING VERSION screen, you may:
- A. Press the DOWN scroll button once to adjust toast time.
 - B. Press the DOWN scroll button twice to choose Fahrenheit or Celsius.
 - C. Press the DOWN scroll button three times to adjust temperature.
 - D. Press the DOWN scroll button four times to change language.
 - E. Press the PRINCE CASTLE logo button or leave the controls inactive for 10 seconds to exit



PRINCE CASTLE LOGO BUTTON

- 2 Choose Toast Time.** From the PROGRAMMING VERSION screen, press the DOWN scroll button once. From the TOAST TIME screen that appears, press the MODE button.



MODE BUTTON

- A. From the TOAST TIME screen that appears, use the UP and DOWN scroll buttons to select TIME. (8 to 36 sec.)



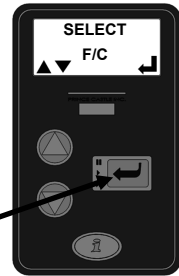
UP/DOWN SCROLL BUTTONS

- B. Accept the new time by pressing the MODE button to return to the TOAST TIME screen.
NOTE: To return without accepting the new setting, press the PRINCE CASTLE logo button.



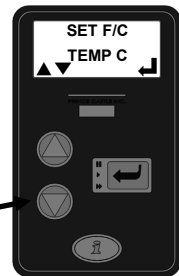
MODE BUTTON

- 3 Choose Fahrenheit or Celsius.** From the PROGRAMMING VERSION screen, press the DOWN scroll button twice. From the SELECT F/C screen that appears, press the MODE button.



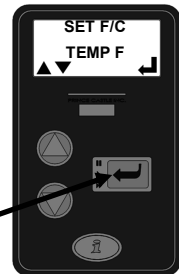
MODE BUTTON

- A. From the SET F/C screen that appears, use the UP and DOWN scroll buttons to select TEMP = F (Fahrenheit) or TEMP = C (Celsius).



UP/DOWN SCROLL BUTTONS

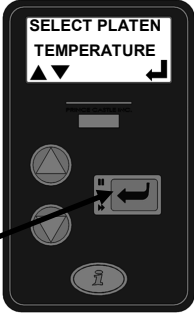
- B. Accept the new scale by pressing the MODE button to return to the SELECT F/C screen.
NOTE: To return without accepting the new setting, press the PRINCE CASTLE logo button.



MODE BUTTON

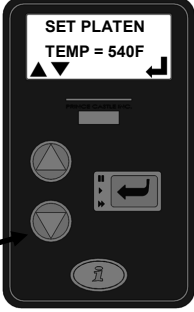
Management Programming (Continued)

4 Adjust set point temperature. From the SELECT F/C screen, press the DOWN scroll button. From the SELECT PLATEN TEMPERATURE screen, press the mode button.



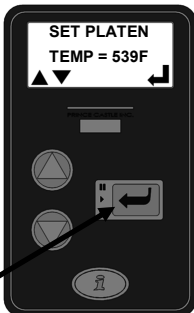
MODE BUTTON

A. From the SET PLATEN screen that appears, adjust the platen set point temperature using the UP and DOWN scroll buttons. (300-560 degrees F)



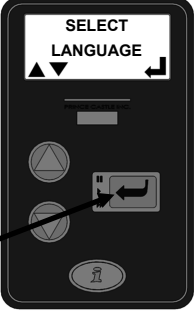
UP/DOWN SCROLL BUTTONS

B. Accept the new platen setting by pressing the MODE button to return to the SELECT PLATEN TEMPERATURE screen. *NOTE: To return without accepting the new setting, press the PRINCE CASTLE logo button.*



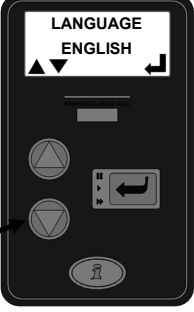
MODE BUTTON

5 Change language. From the SELECT PLATEN TEMPERATURE screen, press the DOWN scroll button. From the SELECT LANGUAGE screen, press the MODE button.



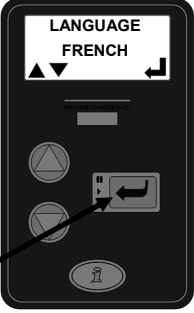
MODE BUTTON

A. From the LANGUAGE screen that appears, use the UP and DOWN scroll buttons to select a different language.



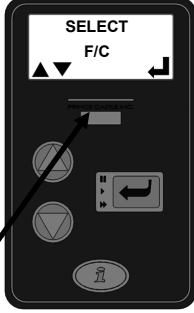
UP/DOWN SCROLL BUTTONS

B. Accept the new language by pressing the MODE button to return to the SELECT LANGUAGE screen. *NOTE: To return without accepting the new setting, press the PRINCE CASTLE logo button.*



MODE BUTTON

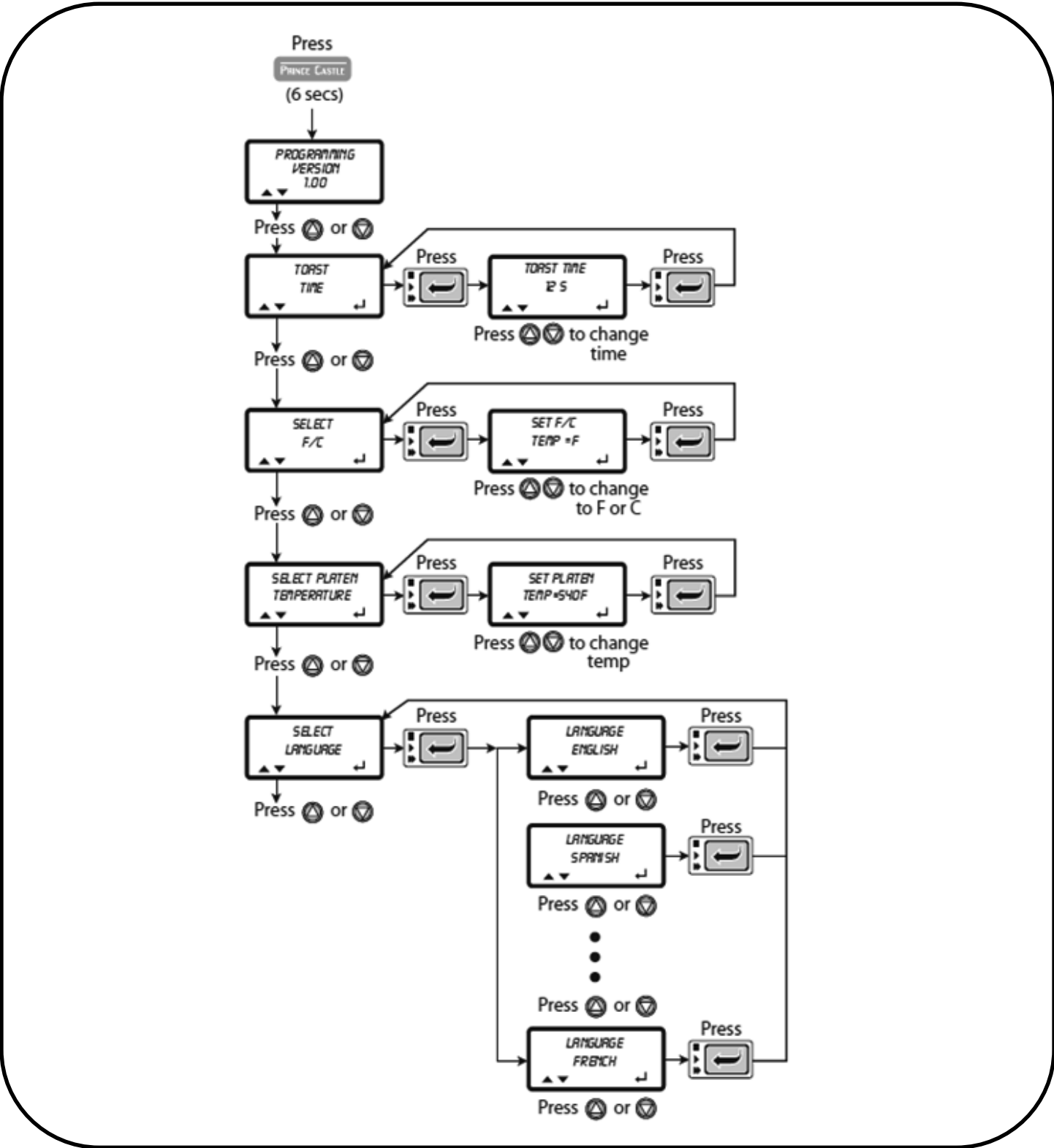
6 Exit programming. Press the PRINCE CASTLE logo button from the SELECT F/C, SELECT PLATEN TEMPERATURE or SELECT LANGUAGE screen or leave the controls inactive for 10 seconds.



PRINCE CASTLE LOGO BUTTON

Temperature	Factory Presets	New Setting
Platen	540 F/283 C	
Toast Time	8 sec.	

Programming Diagram



Dual Continuous Feed Toaster

DCFT-BK



Daily Planned Maintenance

WARNING

BURN/ELECTRICAL SHOCK HAZARD! Platen sections are **HOT** and can cause severe burns or severe shock. Keep hands and objects out of the toaster unit! Failure to exercise caution may result in serious injury! Turn the unit off, unplug it and let it cool down completely before touching or working on internal apparatus.

WARNING

If the supply cord is damaged, it must be replaced by the manufacturer, its service agent, or similarly qualified person to avoid a hazard.

WARNING

Do not immerse toaster in water. Do not clean with a water hose or jet spray. Do not use abrasive cleaners, pads or tools on the platen or the release sheet. Failure to exercise caution will result in damage to the unit and will not be covered by warranty. Cleaning and user maintenance shall not be made by children without supervision.

1 Gather cleaning materials.

You will need a clean, damp cloth, soft bristle brush, neoprene gloves, lukewarm soap and water, and non-abrasive cleaner.

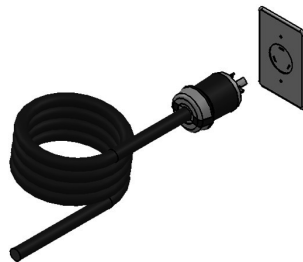
2 Turn DCFT off.

Turn the On/Off switch located opposite the display panel to OFF.



3 Unplug and let cool.

Allow platen to cool for 60 minutes before cleaning. The plug removed from the outlet shall remain clearly visible to the operator during the maintenance procedure.



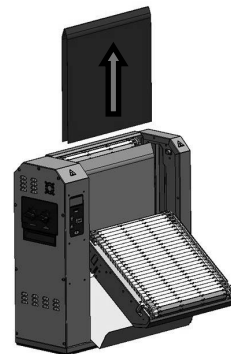
4 Open conveyors.

Lift each conveyor up, out and set down in open position.



5 Remove the release sheet.

Lay the release sheet on a flat surface.



6 Clean the conveyors.

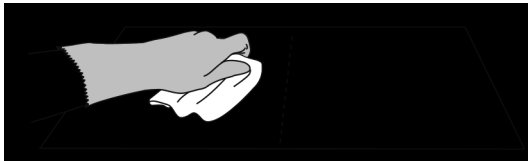
Put on neoprene gloves. Wipe the conveyors with a damp cloth. Use a soft bristle brush as necessary.



Daily Planned Maintenance (continued)

7 Clean the release sheet.

Dampen a clean cloth with lukewarm soap and water. Wipe down both sides of the release sheet, making sure all built-up sugar is removed. Allow to air dry. NOTE: *Rotate sheets daily for longer life. Depending on volume of product toasted, sheets should be replaced every 4 to 6 weeks.*



9 Clean outside of the DCFT.

Dampen a clean cloth with lukewarm soap and water. Wipe down the outside of the entire DCFT. Wipe down the entire DCFT again with a fresh clean, sanitized towel.



8 Clean the platen surface.

Use a damp cloth to remove any built-up sugar on the surface.



10

Reassemble the unit.



Dual Continuous Feed Toaster

DCFT-BK



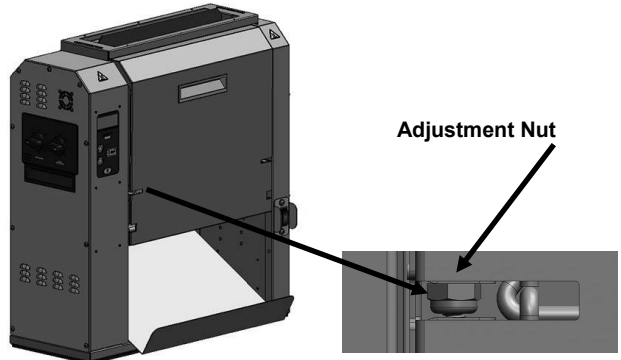
Conveyor Adjustment

1 Use a 3/8" open end wrench.

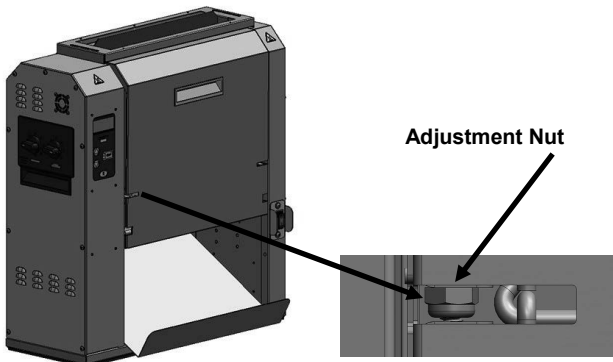
2 Turn DCFT off.
Turn the On/Off switch located opposite the display panel to OFF.



4 To raise conveyor, turn wrench to the right as shown.



3 To lower conveyor, turn wrench to the left as shown.



5 Repeat adjustment for opposite conveyor.

6 Turn DCFT ON and observe.

Troubleshooting

PROBLEM	POSSIBLE CAUSE	SOLUTION
Unit has no power	Unit unplugged	Plug unit in.
	Breaker tripped	Reset breaker.
	High limit	Call for service (888-375-2938).
	Loose connection on power switch	Call for service (888-375-2938).
	Inoperable power switch	Call for service (888-375-2938).
Unit will not heat up	Loose connection on platen	Call for service (888-375-2938).
	Open platen	Call for service (888-375-2938).
	Loose connection to the main control board	Call for service (888-375-2938).
	Inoperable main control board	Call for service (888-375-2938).
	Inoperable SS Relay	Call for service (888-375-2938).
Unit heats up, but the conveyor does not run	Inoperable motor	Call for service (888-375-2938).
	Stripped drive gear	Call for service (888-375-2938).
	Stripped conveyor gear	Call for service (888-375-2938).
	Jammed conveyor assembly	Call for service (888-375-2938).
	Inoperable drive train	Call for service (888-375-2938).
Not toasting properly (under- or over-done)	Inoperable t-probe	Call for service (888-375-2938).
	Improper set point	Adjust set point in programming (see <i>Management Programming</i> section).
	Improper compression	Adjust compression (see <i>Operation Manual, Operation</i> section).
	Torn or soiled release sheet	Clean or replace release sheet.
	Bad platen	Call for service (888-375-2938).
Jumpy display	Improper ground	Call for service (888-375-2938).
Blank display	Inoperable display	Call for service (888-375-2938).
	Inoperable main control board	Call for service (888-375-2938).
	Loose wiring harness	Call for service (888-375-2938).
Relay shorted	Loose wiring harness	Call for service (888-375-2938).

Dual Continuous Feed Toaster

DCFT-BK

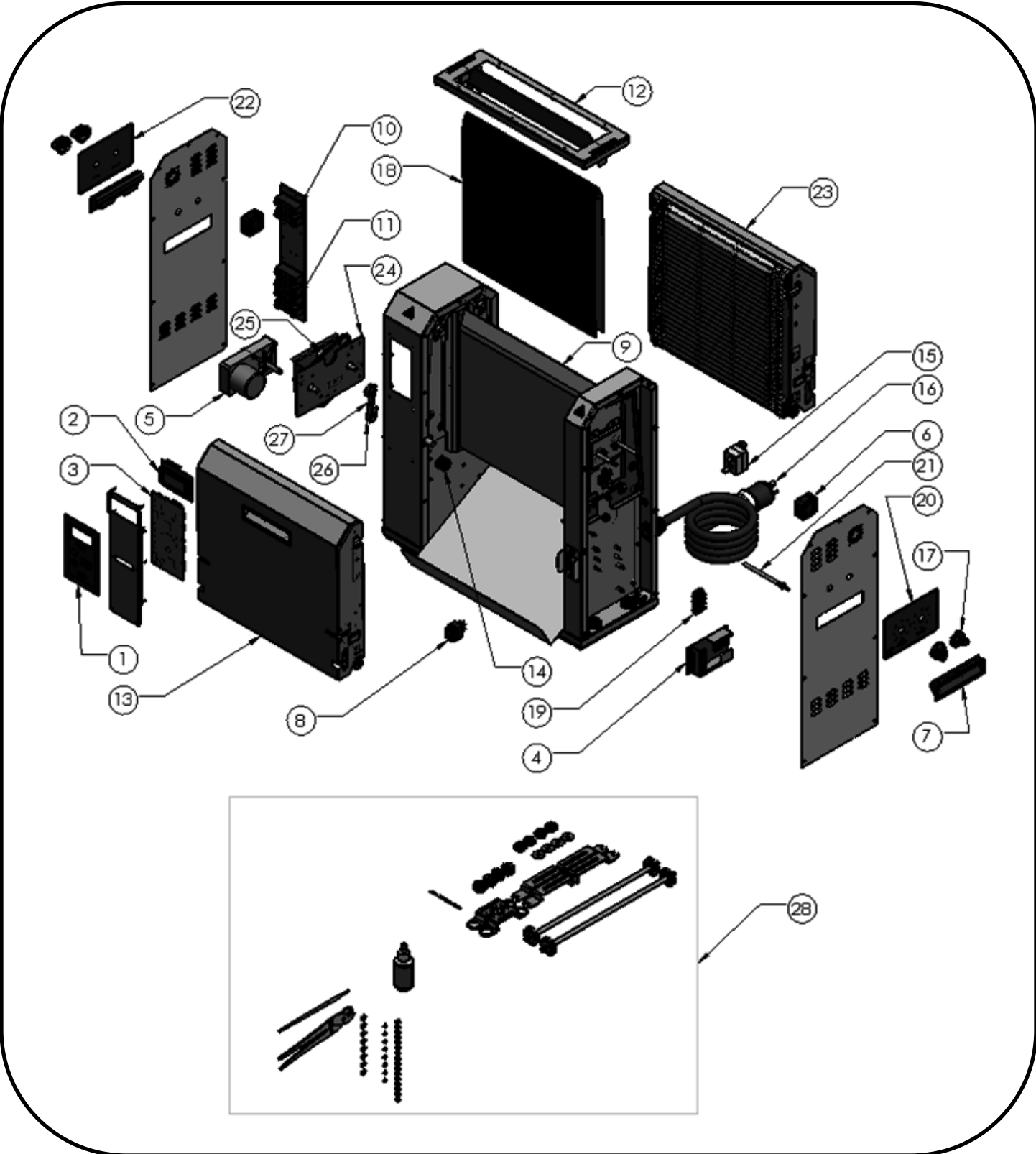


Exploded View and Parts List

With the exception of maintenance items, such as Teflon sheets, electrical and mechanical parts should be replaced only by a qualified service representative.

No.	Part No.	Description	No.	Part No.	Description
1	526-073S	Membrane Switch w/Overlay	15	526-391S	Hi Limit
2	526-021S	Display Board	16	72-446S	Power Cord
3	525-106S	Main Board	17	526-221S	Knobs (qty. of 2)
4	85-144-24S	Power Supply Board	18	525-004S	Teflon Sheet
5	526-025S	Motor	19	77-092-03S	Terminal Block
6	526-023S	Fan (qty. of 2)	20	526-185S	Minor Side Overlay
7	526-032S	Handle (qty. of 2)	21	526-022S	Probe
8	78-233S	Power Switch	22	526-184S	Major Side Overlay
9	526-627S	Platen	23	525-295S	Conveyor, Heel
10	65-058S	SS Relay 50A	24	526-289S	Drive Train Assembly
11	65-064S	Power Relay	25	537-729S	Drive Chain
12	525-202S	Bun Splitter	26	86-558S	Tensioner Spring
13	525-294S	Conveyor, Crown	27	525-099S	Tensioner Assembly
14	526-295S	Gear (qty. of 2)	28	525-270S	Retro Fit Kit

Exploded View and Parts List

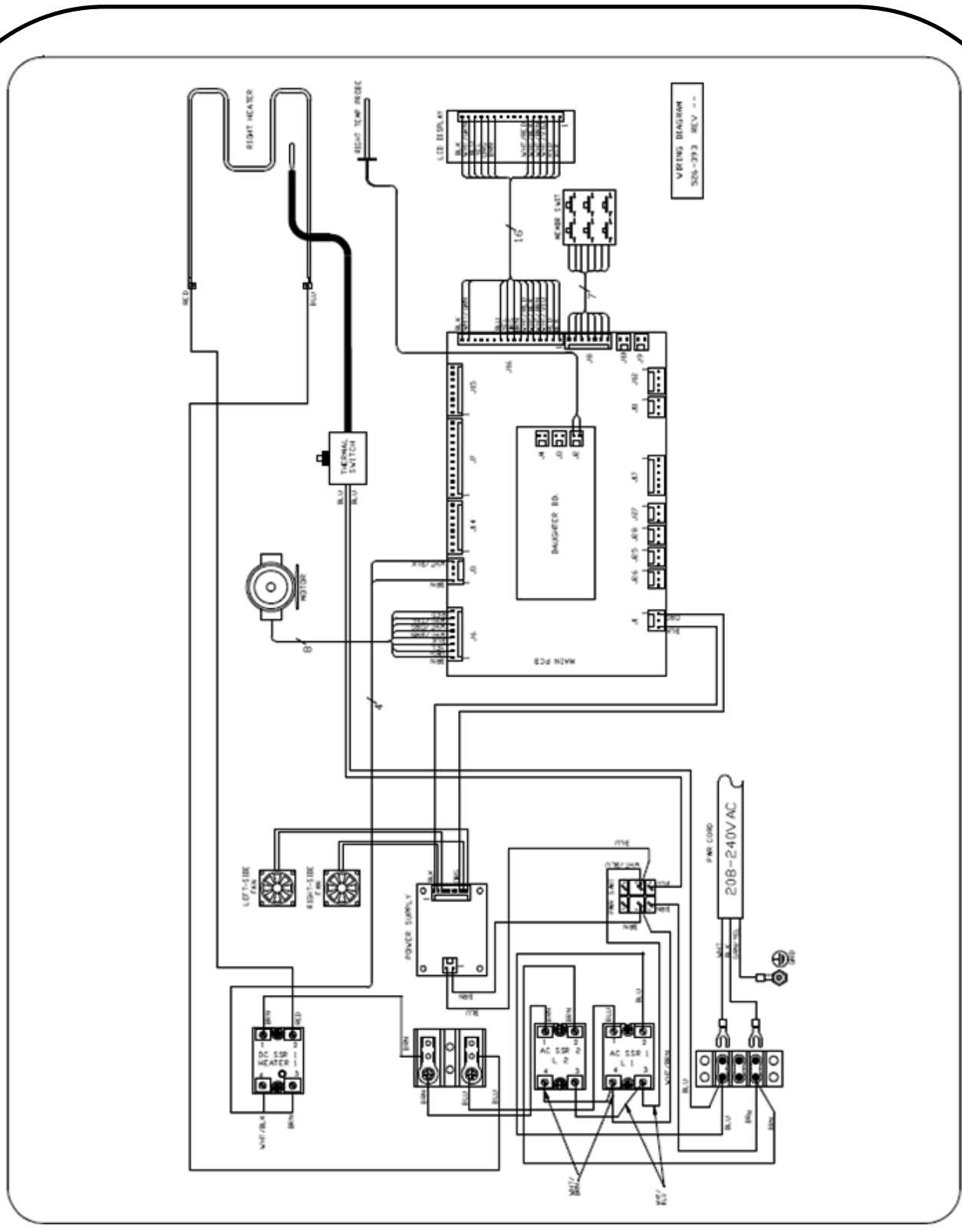


Dual Continuous Feed Toaster

DCFT-BK



Wiring Diagram



Declaration Of Conformity



We,

Prince Castle LLC

(Supplier's name)

355 E. Kehoe Blvd. Carol Stream, IL 60188 U.S.A.

declare under our sole responsibility that the product:

Model DCFT-BK Toaster

to which this declaration relates in conformity with the following European, harmonized and published standards at date of this declaration:

EMC – EN 55014-2 CAT IV (Amendments A1:2001 ; A2 :2008)
 EN 62233 :2008 ; IEC 61000-4-2 ; IEC 61000-4-3 ; IEC 61000-4-4 ;
 IEC 61000-4-5 ; IEC 61000-4-6 ; IEC 61000-4-11; IEC 61000-4-13
 EN 55014-1:2006 (Amendments A1:2009; A2:2011)

LVD - IEC 60335–2–48:2002 (Fourth Edition) + A1:2008 used in conjunction
 with IEC 60335-1:2010 (Fifth Edition)

following the provisions of the Directives (if applicable):

EMC-directive : 89/336/EEC as amended by 92/31/EEC and 93/68/EEC
 Low Voltage Directive 2006/95/EC
 Amendment to the above directive 93/68/EEC

These conclusions were based on test report:

EMC - performed by D.L.S. Electronic Systems, Inc.; December 2012 and October 2013

LVD – performed by Intertek; October 2013

Place and date of issue

Prince Castle, Inc
 355 E. Kehoe Blvd
 Carol Stream, IL 60188

Name and signature of company authorized person and company stamp

Denis Lapoulle
 Managing Director-Catequip S A

Matthew Adomaitis
 Compliance Engineer

This Declaration of Conformity is suitable to the European Standard EN 45014 *General Criteria for supplier's Declaration of Conformity*. The basis for the criteria has been found in international documentation, particularly in ISO/IEC, Guide 22, 1982, *Information on manufacturer's Declaration of Conformity with standards or other technical specifications*.

EC type declaration as referenced in article 10.1 of EC directive 89/336/EEC "The EMC-directive" and in Appendix III of EC directive 2006/95/EC "The Low Voltage