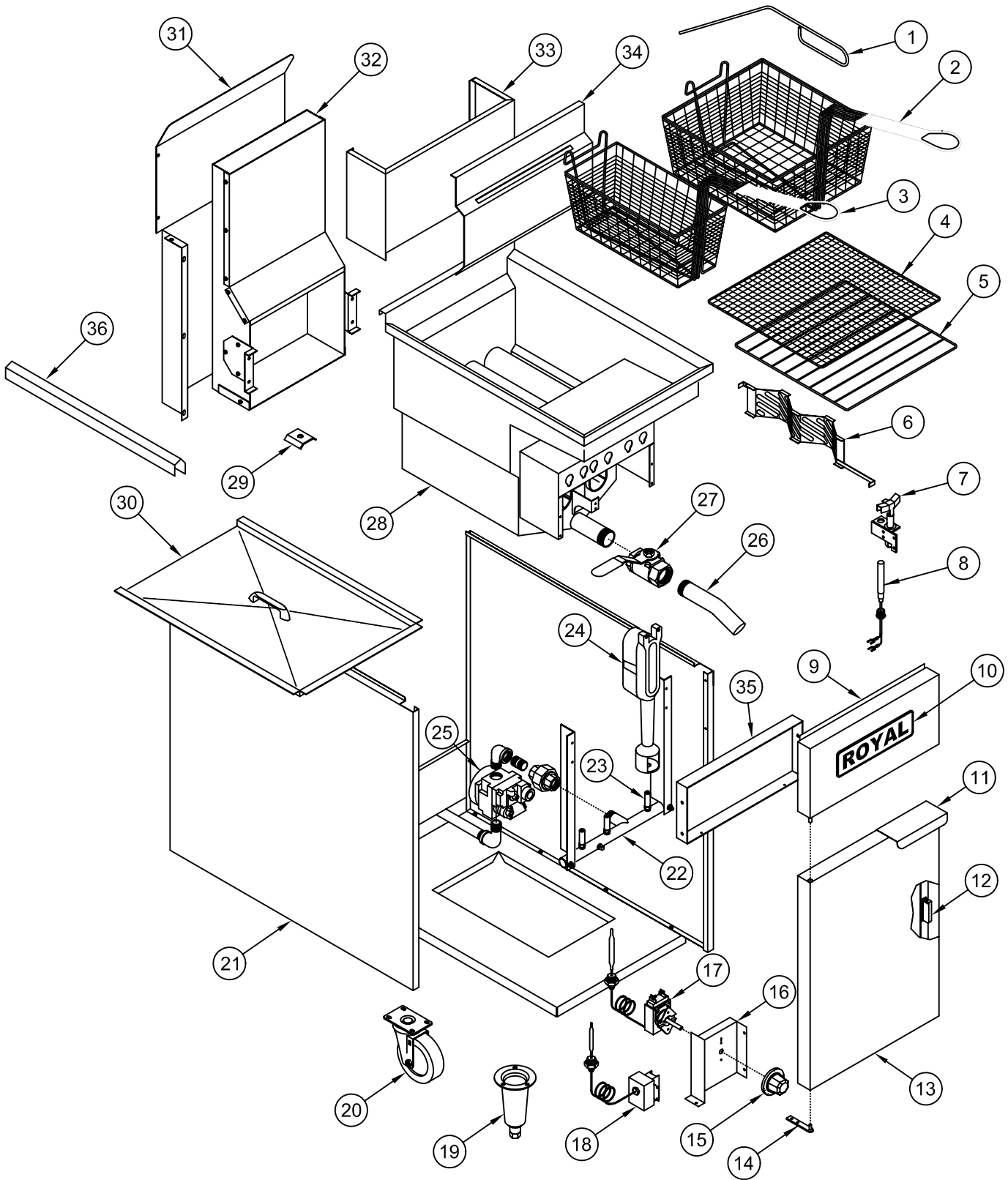
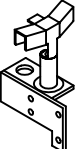

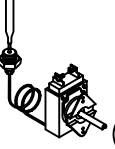

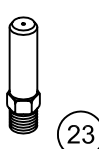


# RFT - 50, 60S & 75

## Tube Fryer - 50, 60 & 75 lbs.



PILOT	THERMOPILE	THERMOSTAT	HI LIMIT	ORIFICE HOOD
				
7	8	17	18	23

# RFT – 50, 60S & 75

## **Tube Fryer – 50, 60 & 75 lbs.**

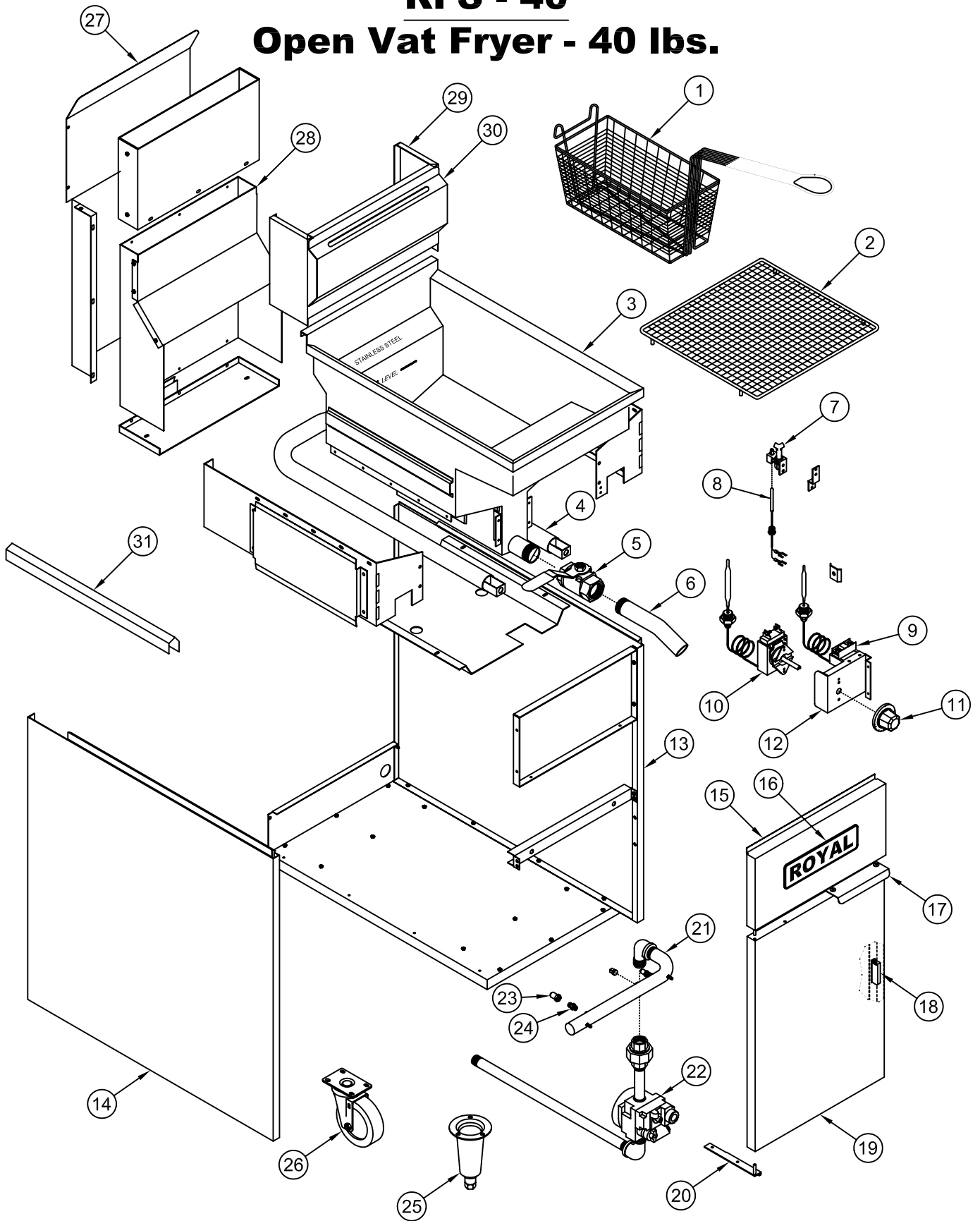
ITEM NO.	PART NO.	DESCRIPTION
1	3105	Clean out rod (goofer rod)
2	3103 3104	Frying basket 60 lbs. (mid size) Frying basket 75 lbs. (large)
3	3100	Frying basket 50 lbs. (small)
4	3106 3107 3108	Crumb screen -fine mesh 75 lbs. (large) Crumb screen -fine mesh 60 lbs. (mid size) Crumb screen -fine mesh 50 lbs. (small)
5	3004 3005 3006	Crumb screen – regular 75 lbs. (large) Crumb screen – regular 60 lbs. (mid size) Crumb screen – regular 50 lbs. (small)
6	28021 28019	Diffuser assy. 75 lbs. (large) Diffuser assy. 50 & 60 lbs. (small)
7	3231 3232 3207 3206	Pilot burner w/bell orifice (natural gas) Pilot burner w/bell orifice (propane gas) Pilot bell orifice only (natural gas) Pilot bell orifice only (propane gas)
8	3109	Thermopile
9	28205 28406	Front panel 50 lbs Front panel 60, 75 lbs
10	2649	Royal logo (Large)
11	1005	Offset Pull Handle (chrome handle)
12	1724	Door magnet
13	28237 28430	Door panel assembly 50 lbs Door panel assembly 60, 75 lbs
14	28020	Door hinge assy.
15	3110	Knob thermostat
16	28003	Bracket – thermostat/hi-limit
17	3113	Thermostat
18	3112	Hi-limit switch
19	1219	Chrome cone leg
20	2193 2192	Caster 5" w/brake Caster 5" without brake
21	28201 28202 28402 28403	Side outer panel – Right side 50, 60 lbs Side outer panel – Left side 50, 60 lbs Side outer panel – Right side 75 lbs Side outer panel – Left side 75 lbs
22	3227 3228	Manifold pipe 50 lbs. (3 tube) Manifold pipe 60, 75 lbs. (4 tube)
23	3201-32 3202-50	Orifice hood #32 (brass) natural gas, 38,000 BTU Orifice hood #50 (brass) propane gas, 38,000 BTU
24	3116	Burner (cast iron)

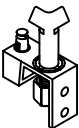


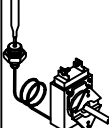

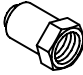

**RFT – 50, 60S & 75 (cont.)**  
**Tube Fryer – 50, 60 & 75 lbs.**

ITEM NO.	PART NO.	DESCRIPTION
25	3114 3115	Gas valve 3/4" natural gas Gas valve 3/4" propane gas
26	3132	Drain extension pipe 1-1/4 NPT.
27	3133	Drain valve 1-1/4" NPT.
28	28211 28453 28413	Vessel assembly 50 lbs. (small) Vessel assembly 60 lbs. (mid size) Vessel assembly 75 lbs. (large)
29	28005	Probe holder
30	28229 28459 28428	Vessel tank cover 50 lbs. (small) Vessel tank cover 60 lbs. (mid size) Vessel tank cover 75 lbs. (large)
31	28221 28422	Back panel cover 50 lbs. (3 tube) Back panel cover 60, 75 lbs. (4 tube)
32	28236 28429	Flue box assy. 50 lbs. (3 tube) Flue box assy. 60, 75 lbs. (4 tube)
33	28220 28421	Vessel back panel 50 lbs. (3 tube) Vessel back panel 60, 75 lbs. (4 tube)
34	28208 28409	Basket hanger 50 lbs. (3 tube) Basket hanger 60, 75 lbs. (4 tube)
35	28204 28405	Front baffle 50 lbs. (3 tube) Front baffle 60 lbs., 75 lbs. (4 tube)
36	28238 28431	Joiner strip for RFT-50, RFS-40 Joiner strip for RFT-75

# RFS - 40

## Open Vat Fryer - 40 lbs.

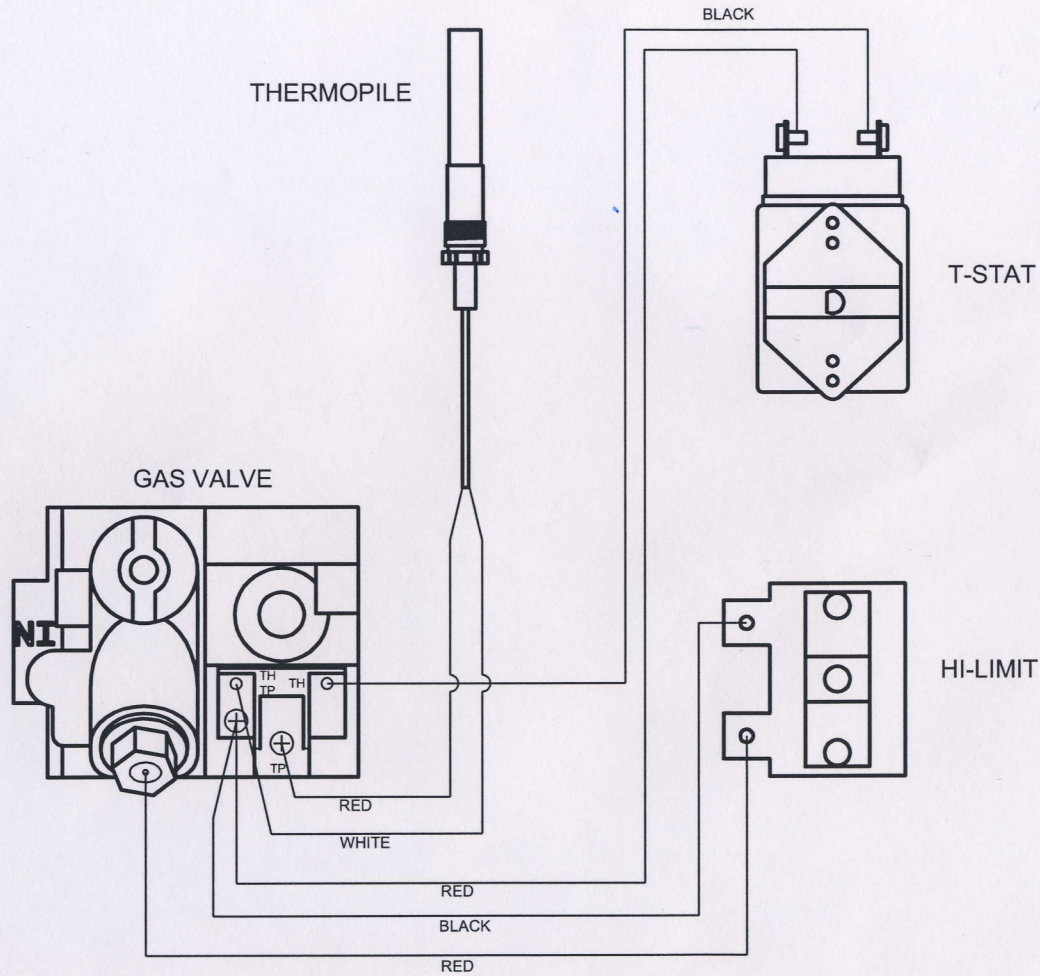


PILOT	THERMOPILE	HI LIMIT	THERMOSTAT	KNOB THERMOSTAT	ORIFICE HOOD	ORIFICE ADAPTER
						
7	8	9	10	11	23	24

# RFS - 40

## Open Vat Fryer – 40 lbs.

ITEM NO.	PART NO.	DESCRIPTION
1	3100	Frying basket
2	3101	Crumb screen (fine mesh)
3	28051	Vessel assembly (s/st)
4	2105	“U” Burner
5	3133	Drain valve 1-1/4” NPT.
6	3132	Drain extension pipe 1-1/4 NPT.
7	2107	Pilot burner w/bell orifice (natural gas)
	2106	Pilot burner w/bell orifice (propane gas)
	3233	Pilot bell orifice only (natural gas)
	3234	Pilot bell orifice only (propane gas)
8	3109	Thermopile
9	3112	Hi-limit switch
10	3113	Thermostat
11	3110	Knob, thermostat
12	28003	Bracket – thermostat, hi limit
13	28201	Side outer panel – Right side
14	28202	Side outer panel – Left side
15	28205	Front panel
16	2649	Royal logo (Large)
17	1005	Offset pull handle – chrome handle
18	1724	Door magnet
19	28237	Door assembly
20	28020	Door hinge assembly
21	1727	Manifold pipe
22	3114	Gas valve 3/4” natural gas
	3115	Gas valve 3/4” propane gas
23	1121-32	Orifice hood # 32 (brass) natural gas, 52,500 BTU
	1122-48	Orifice hood # 48 (brass) propane gas, 52,500 BTU
24	1733	Orifice adapter 3/8-27 x 1/8 NPT
25	1219	Chrome cone leg
26	2193	Caster 5” w/brake
	2192	Caster 5” without brake
27	28221	Back Panel
28	28236	Flue box assy.
29	28220	Riser back
30	28208	Basket hanger
31	28238	Joiner strip



		UNLESS OTHERWISE SPECIFIED: DO NOT SCALE DRAWING. REMOVE ALL BURRS AND CHAMP EDGES.		MATERIAL:		<b>ROYAL</b> RANGE OF CALIFORNIA, INC. 3245 CORRIDOR DR. MIRA LOMA, CA 91752		DRAWING NAME: FRYER WIRING DIAGRAM		PART NO.:	
		TOLERANCES: DECIMALS +/- .010 FRACTIONS +/- 1/32 ANGLE +/- 1°		SHEAR SIZE:				MODEL NO: FRYER SERIES		SCALE:	
REV.		DESCRIPTION		DATE		BY		PROJECT: FRYERS		SHEET NO. 1 OF 1	
		HOLE DIMENSION TOLERANCES: DECIMALS +/- .005 FRACTIONS +/- 1/64		DRWN BY: JLC		DATE: 05/14/09		REQ/UNIT			
				CHKD BY:		DATE:					