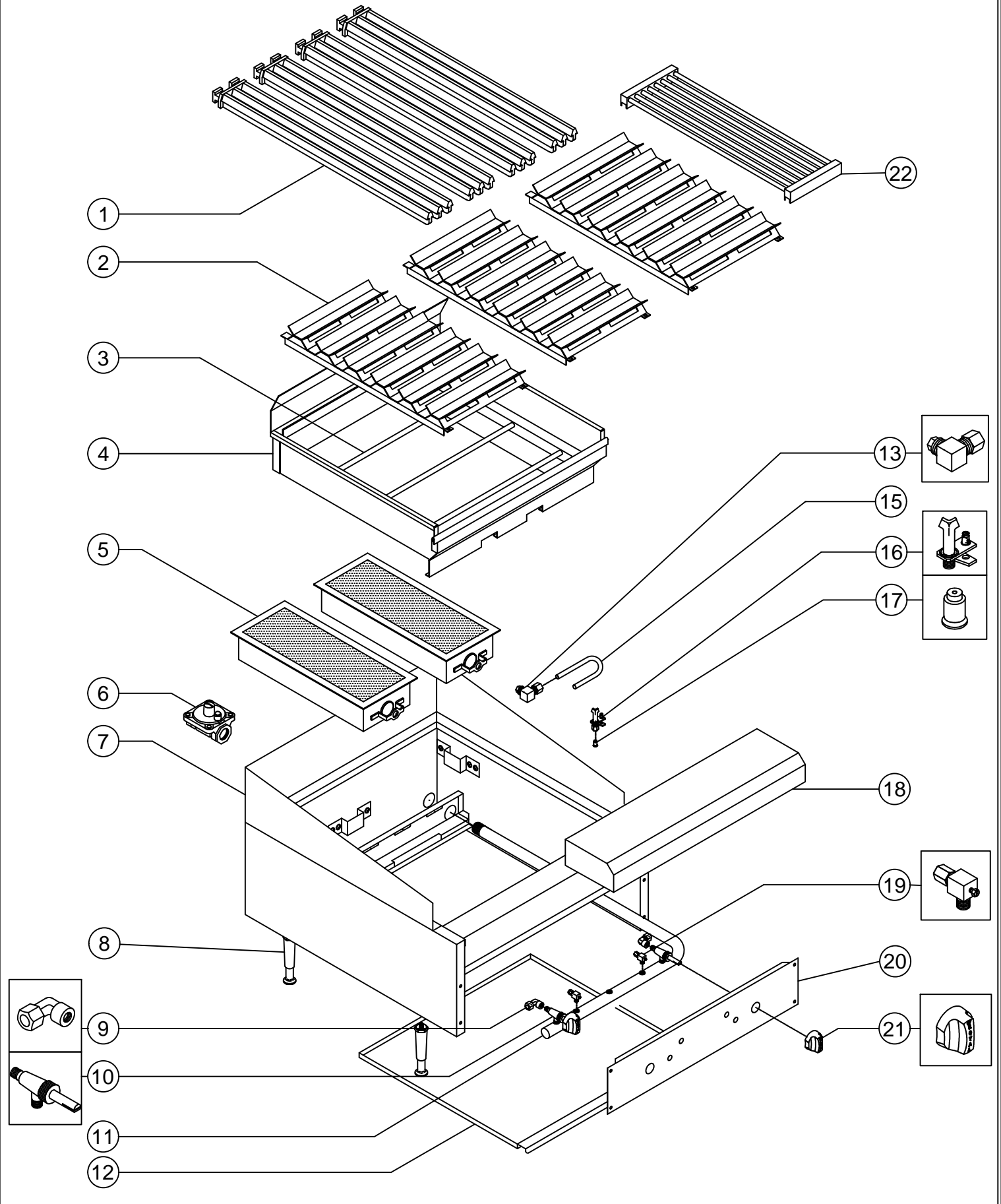


RIB INFRA RED RADIANT BROILER



RIB

INFRA RED RADIANT BROILER

ITEM NO.	PART NO.	DESCRIPTION
1	1900	3" X 21" Top Grate
2	31413	10" Radiant Assy. (2) Assy per unit (All sizes)
	31414	11 3/8" Radiant Assy (See below for quantities used per unit)
3	31467	Cross Rod Specify Model #
4	31470	24" Fire box Assy.
	31530	36" Fire box Assy.
	31580	48" Fire box Assy
	31623	60" Fire box Assy.
5	1604	Infra-red burner (B-20)
6	1618	Gas pressure regulator (Natural)
	1619	Gas pressure regulator (Propane)
7	Misc.	S/S Splash guard Assy (Must Specify if Tapered and Measurement)
8	3604	4" Adjustable leg
9	1508	Elbow brass fitting
10	1628	On/Off burner Valve
11	1051	Manifold pipe -24"
	1053	Manifold pipe -36"
	1054	Manifold pipe -48"
	1055	Manifold pipe -60"
12	31469	24" Crumb tray
	31639	36" Crumb tray
	31573	48" Crumb tray
		60" Unit uses (1) 24" Crumb tray & (1) 36" Crumb Tray
13	1213	90° Orifice Elbow Rectangular
14	2007-40	Spud Orifice #40 (Natural)
	2010-52	Spud Orifice #52 (Propane)
15	1003-**	3/8" Aluminum tubing
16	1649	Pilot burner w/bell orifice (Natural)
	1650	Pilot burner w/bell orifice (Propane)
17	1651	#18 Pilot bell orifice only (Natural)
	1652	#10 Pilot bell orifice only (Propane)
18	31466	24" Landing ledge
	31516	36" Landing ledge
	31565	48" Landing ledge
	31617	60" Landing ledge
19	1625	90° Adjustable single pilot valve

11-08-2013

CONTINUE

