

# CME650 SERVICE PARTS

This section contains the parts illustrations and parts lists for the CME650.

CM650 ice machines are manufactured in both 60 cycle and 50 cycle. When ordering electrical parts, be certain to match the voltage to the ice machine.

Example:

CME650AE-**32**A is a 60 cycle, single phase machine.

CME650AE-3A is a 60 cycle, 3 phase machine.

CME650AE-**6**A is a 50 cycle machine.

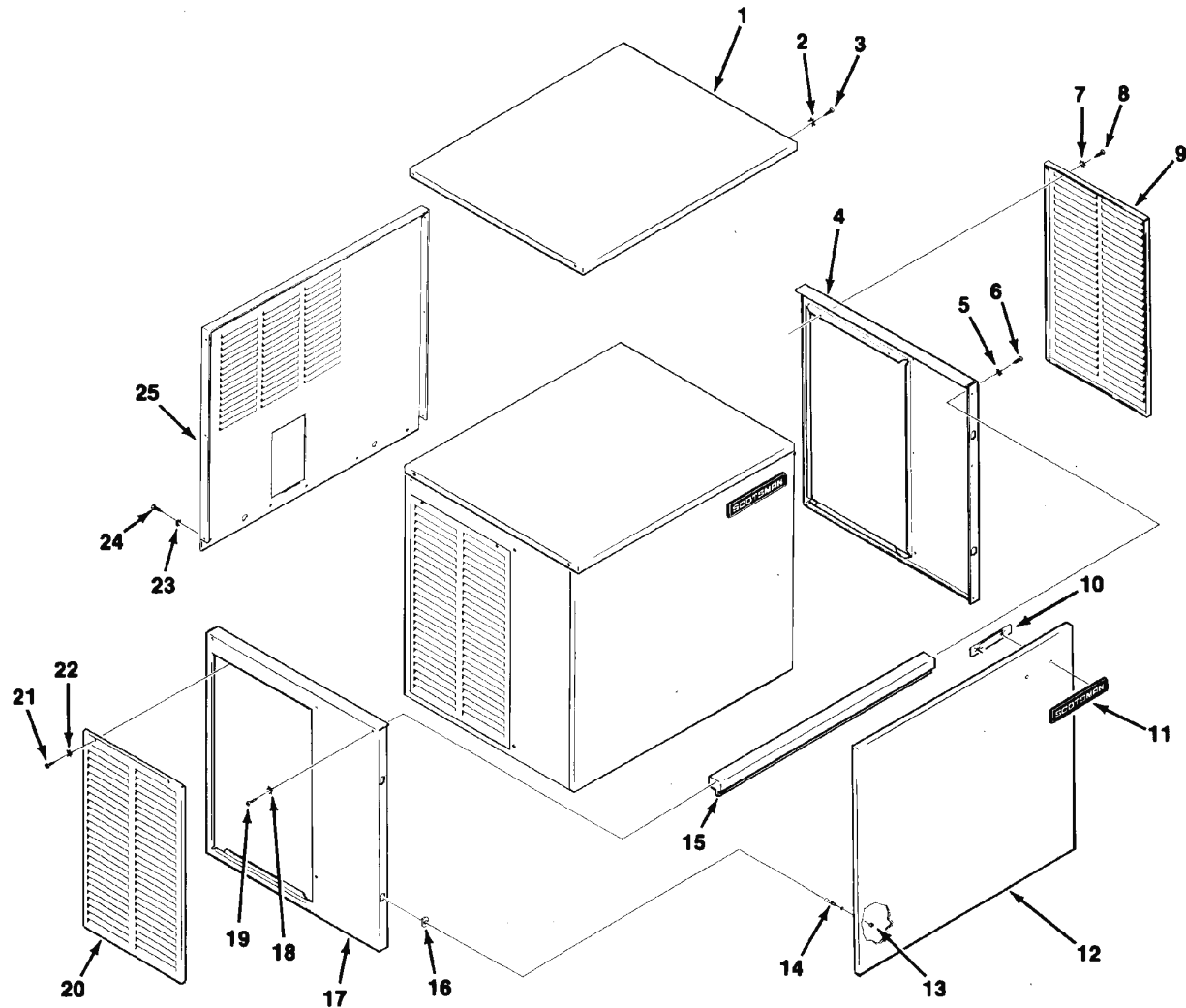
A "no number" designation, when found in the part number column, indicates the part in question is not available from Scotsman as an assembly. This designation is used only for clarity in making the list. When ordering parts, to avoid costly delays and errors, give the part number, the complete description as shown in the list, and the quantity of each part or assembly required.

## TABLE OF CONTENTS

|                                      |   |
|--------------------------------------|---|
| Exterior Panels . . . . .            | 2 |
| Interior Panels . . . . .            | 3 |
| Air Cooled Refrigeration . . . . .   | 4 |
| Water Cooled Refrigeration . . . . . | 5 |
| Water System . . . . .               | 6 |
| Control Box . . . . .                | 7 |
| Wiring Diagrams . . . . .            | 8 |

# CME650 SERVICE PARTS

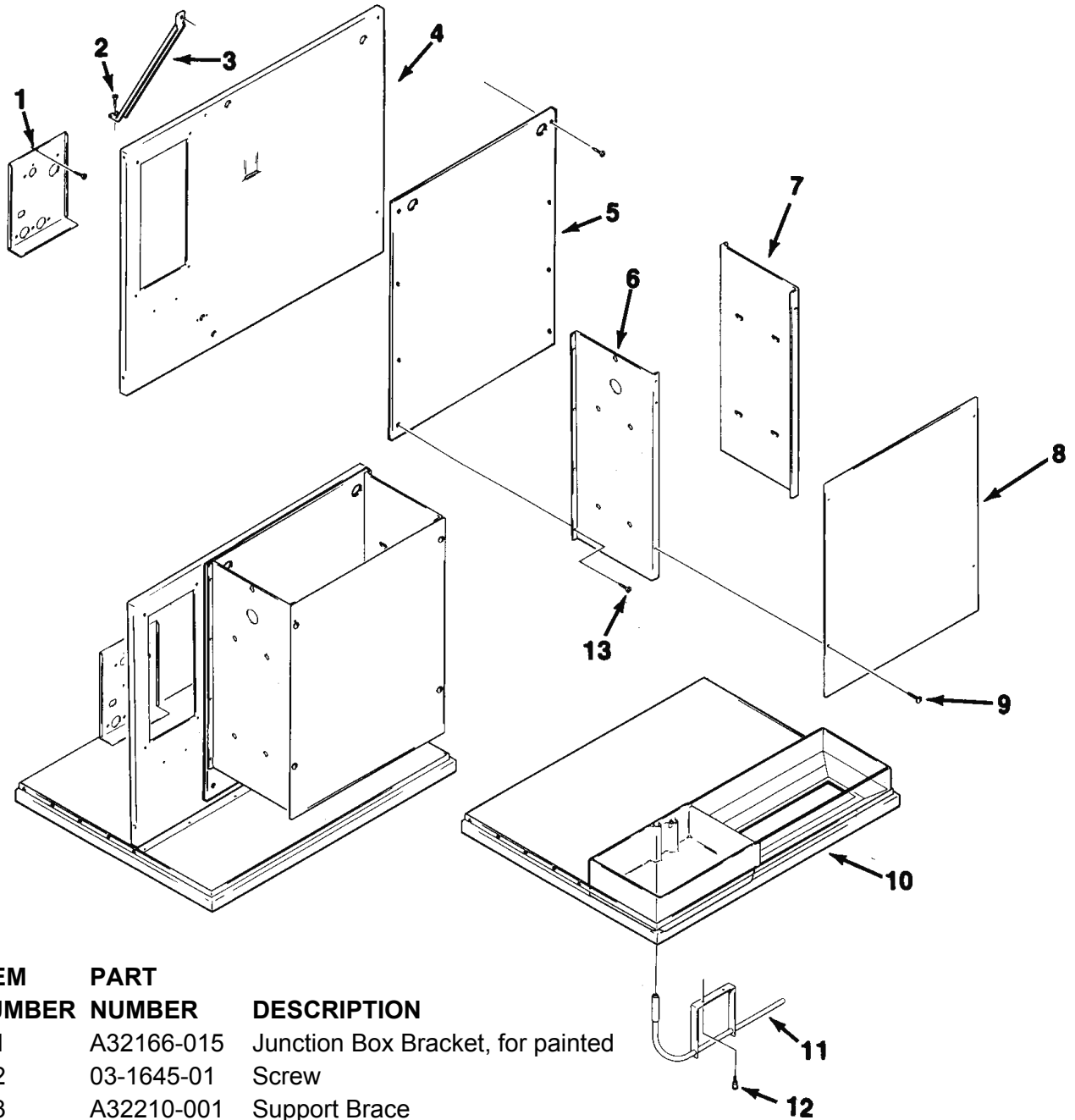
## CABINET ASSEMBLY



| ITEM NUMBER | PART NUMBER | DESCRIPTION                | ITEM NUMBER | PART NUMBER | DESCRIPTION                 |
|-------------|-------------|----------------------------|-------------|-------------|-----------------------------|
| 1           | A32159-001  | Top Panel, Painted         | 13          | 03-1406-04  | Nut                         |
|             | A32159-002  | Top Panel, S. S.           | 14          | 15-0411-00  | Strike                      |
| 2           | 03-1417-27  | Lockwasher                 | 15          | A32169-001  | Front Support               |
| 3           | 03-1531-01  | Screw                      | 16          | 02-0836-00  | Cabinet Catch               |
| 4           | A32162-001  | Right End Panel, Paint     | 17          | A32163-001  | Left End Panel, Paint       |
|             | A32162-002  | Right End Panel, S.S.      |             | A32163-002  | Left End Panel, S.S.        |
| 5           | 03-1417-27  | Lockwasher                 | 18          | 03-1417-27  | Lockwasher                  |
| 6           | 03-1531-01  | Screw                      | 19          | 03-1531-01  | Screw                       |
| 7           | 03-1417-27  | Lockwasher                 | 20          | A32161-001  | Service Panel, for painted  |
| 8           | 03-1404-12  | Screw                      |             | A33946-002  | Service Panel, gray         |
| 9           | A32161-001  | Service Panel, Painted     | 21          | 03-1404-12  | Screw                       |
|             | A33946-002  | Service Panel, gray        | 22          | 03-1412-27  | Lockwasher                  |
| 10          | 03-0271-00  | Speed Nut                  | 23          | 03-1417-27  | Lockwasher                  |
| 11          | 15-0711-01  | Emblem for painted         | 24          | 03-1531-01  | Screw                       |
|             | 15-0808-03  | Emblem for stainless steel | 25          | A32202-003  | Back Panel, painted         |
| 12          | A32160-001  | Front Panel, Painted       |             | A32202-002  | Back panel, stainless steel |
|             | A32160-002  | Front Panel, S.S.          |             |             |                             |

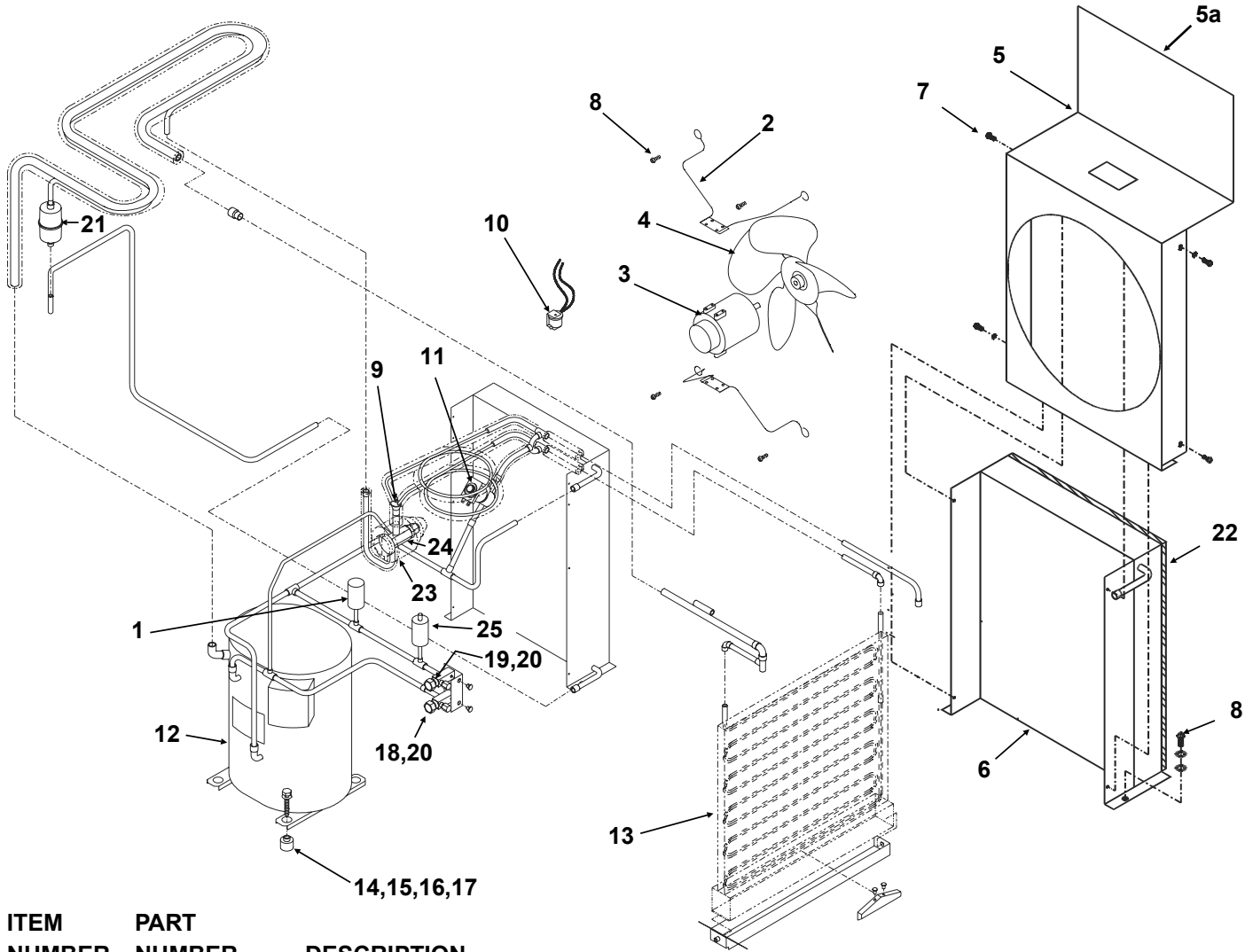
# CME650 SERVICE PARTS

## CABINET INTERIOR



| ITEM NUMBER | PART NUMBER | DESCRIPTION                       |
|-------------|-------------|-----------------------------------|
| 1           | A32166-015  | Junction Box Bracket, for painted |
| 2           | 03-1645-01  | Screw                             |
| 3           | A32210-001  | Support Brace                     |
| 4           | A35666-001  | Retainer                          |
| 5           | 02-2867-01  | Splash Panel                      |
| 6           | A35671-001  | Evaporator Bracket, Left          |
| 7           | A32172-001  | Evaporator Bracket, Right         |
| 8           | 02-3246-01  | Evaporator Plate Cover            |
| 9           | 03-0727-09  | Thumbscrew                        |
| 10          | A32153-002  | Base                              |
| 11          | A32262-001  | Bin Thermostat Bracket            |
| 12          | 03-0727-09  | Thumbscrew                        |
| 13          | 03-1531-01  | Screw                             |

# CME650 SERVICE PARTS AIR COOLED REFRIGERATION

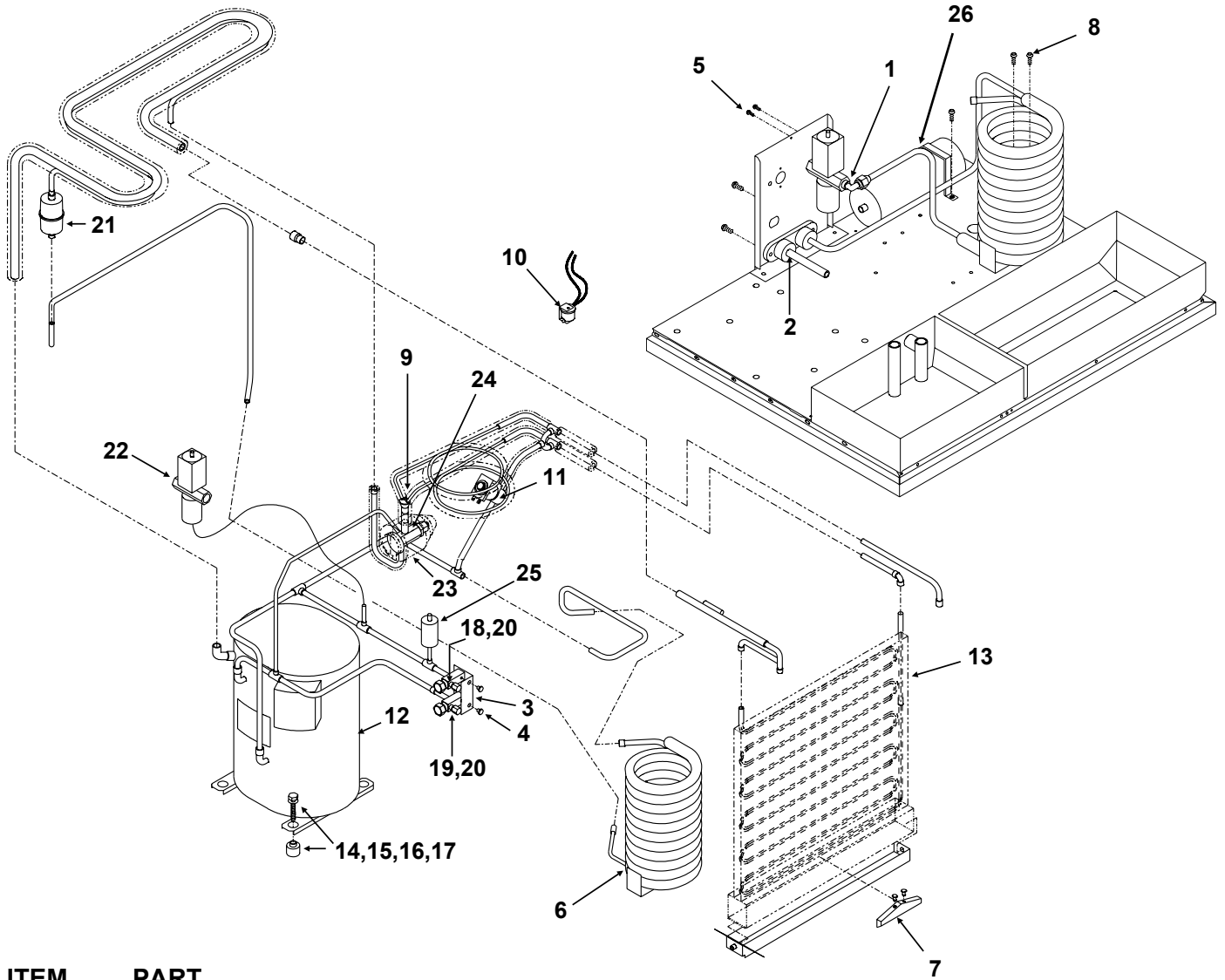


| ITEM NUMBER | PART NUMBER | DESCRIPTION                 | ITEM NUMBER | PART NUMBER | DESCRIPTION                   |
|-------------|-------------|-----------------------------|-------------|-------------|-------------------------------|
| 1           | 11-0479-21  | Fan control                 | 13          | A30296-020  | Evaporator                    |
| 2           | 02-3333-01  | Fan Motor Bracket           | 14          | 18-2200-28  | Grommet                       |
| 3           | 18-8740-01  | 60 Hz Fan Motor             | 15          | 18-2200-27  | Sleeve                        |
|             | 18-8740-02  | 50 Hz Fan motor             | 16          | 03-1407-07  | Washer                        |
| 4           | 18-3732-01  | Fan Blade                   | 17          | 03-1405-20  | Screw                         |
| 5           | A35932-001  | Fan shroud                  | 18          | 16-0832-20  | Lo side access valve (w/caps) |
| 5a          | A35939-001  | Fan shroud top              | 19          | 16-0832-21  | Hi side access valve (w/caps) |
| 6           | 18-8719-01  | Condenser                   | 20          | 16-0832-02  | Stem cap                      |
| 7           | 03-1404-05  | Screw, #6 x 3/8             |             | 16-0832-03  | Core cap                      |
| 8           | 03-1645-01  | Screw, 1/4 - 20 x 1/2       | 21          | 02-3319-02  | Drier                         |
|             | 03-1410-03  | Lockwasher                  | 22          | A32975-001  | Foam Filter                   |
|             | 03-1407-05  | Washer                      | 23          | A36067-001  | TXV insulation                |
| 9           | 16-0844-01  | Distributor                 | 24          | 16-0867-22  | TXV                           |
| 10          | 12-2300-03  | Hi Temp Cut Out             | 25          | 11-0485-21  | Hi Pressure Cut Out Switch    |
| 11          | 12-2417-23  | Hot Gas Valve with coil     |             |             |                               |
| 12          | 18-8726-23  | 208-230/60/1 Comp, w/drier  |             |             |                               |
|             | 18-8726-26  | 220-240/50/1 Compressor     |             |             |                               |
|             | 18-8726-25  | 208-230/60/3 Comp. w/ drier |             |             |                               |

All above compressors have internal overloads

# CME650 SERVICE PARTS

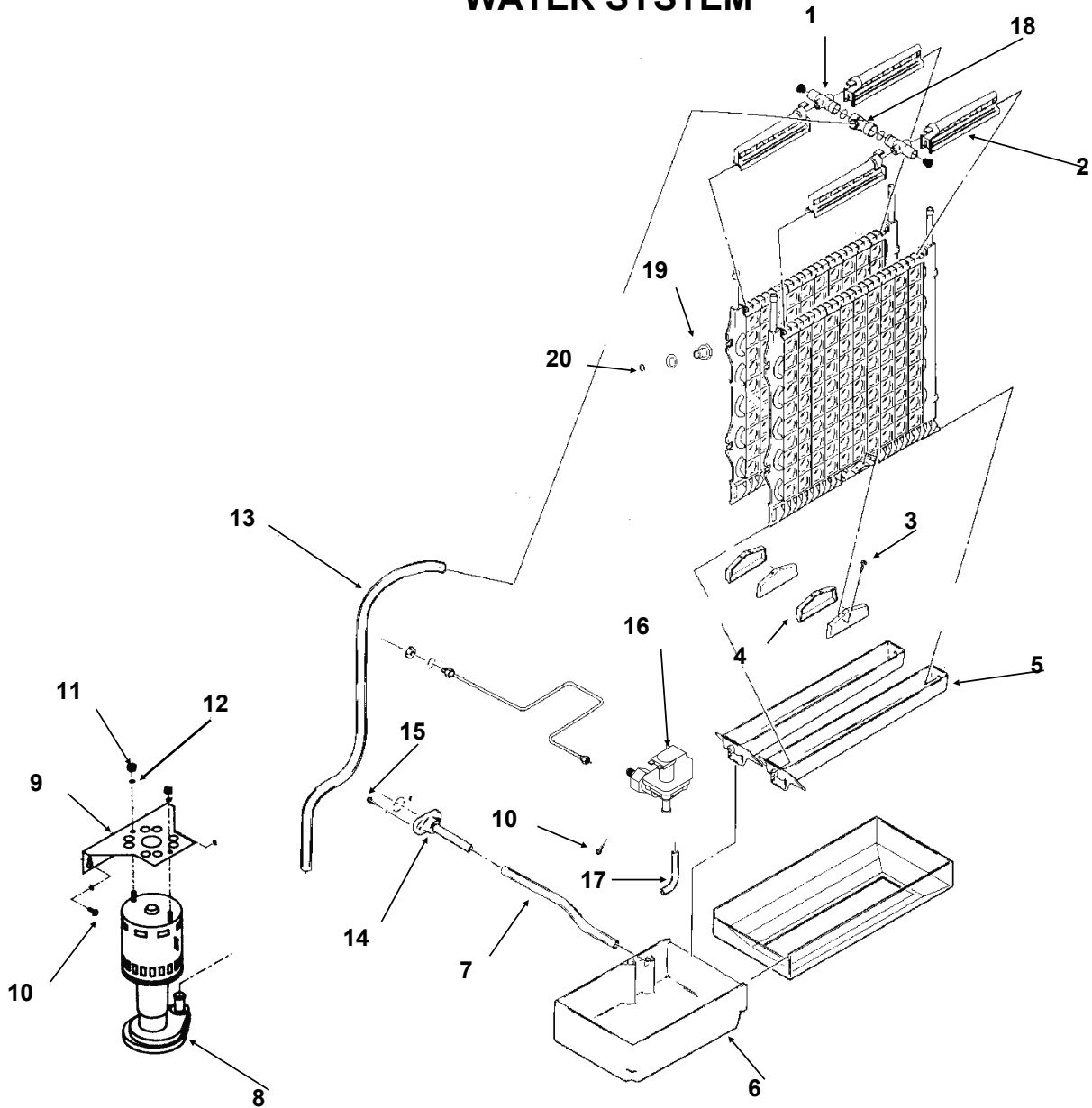
## WATER COOLED REFRIGERATION



| ITEM NUMBER | PART NUMBER                                   | DESCRIPTION                | ITEM NUMBER | PART NUMBER | DESCRIPTION                   |
|-------------|---|----------------------------|-------------|-------------|-------------------------------|
| 1           | 16-0401-02                                    | Brass elbow                | 13          | A30296-020  | Evaporator                    |
| 2           | A31878-002                                    | Drain assembly             | 14          | 18-2200-28  | Grommet                       |
| 3           | A35588-001                                    | Bracket for valves         | 15          | 18-2200-27  | Sleeve                        |
| 4           | 03-0571-02                                    | Screw                      | 16          | 03-1407-07  | Washer                        |
| 5           | 03-1403-14                                    | Screw                      | 17          | 03-1405-20  | Screw                         |
| 6           | 18-6900-25                                    | Condenser                  | 18          | 16-0832-20  | Lo side access valve (w/caps) |
| 7           | 02-2878-02                                    | End cover                  | 19          | 16-0832-21  | Hi side access valve (w/caps) |
| 8           | 03-1645-01                                    | Screw, 1/4 - 20 x 1/2      | 20          | 16-0832-02  | Stem cap                      |
|             | 03-1417-08                                    | Lockwasher                 |             | 16-0832-03  | Core cap                      |
| 9           | 16-0844-01                                    | Distributor                | 21          | 02-3319-02  | Drier                         |
| 10          | 12-2300-03                                    | Hi Temp Cut Out            | 22          | 11-0478-01  | Water regulating valve        |
| 11          | 12-2417-23                                    | Hot Gas Valve with coil    | 23          | A36067-001  | TXV insulation                |
| 12          | 18-8726-23                                    | 208-230/60/1 Comp. w/drier | 24          | 16-0867-22  | TXV                           |
|             | 18-8726-26                                    | 220/240/50/1 Compressor    | 25          | 11-0486-21  | Hi Pressure Cut Out Switch    |
|             | 18-8726-25                                    | 208-230/60/3 Comp. w/drier | 26          | 02-2628-02  | Receiver                      |
|             | all above compressors have internal overloads |                            |             |             |                               |

# CME650 SERVICE PARTS

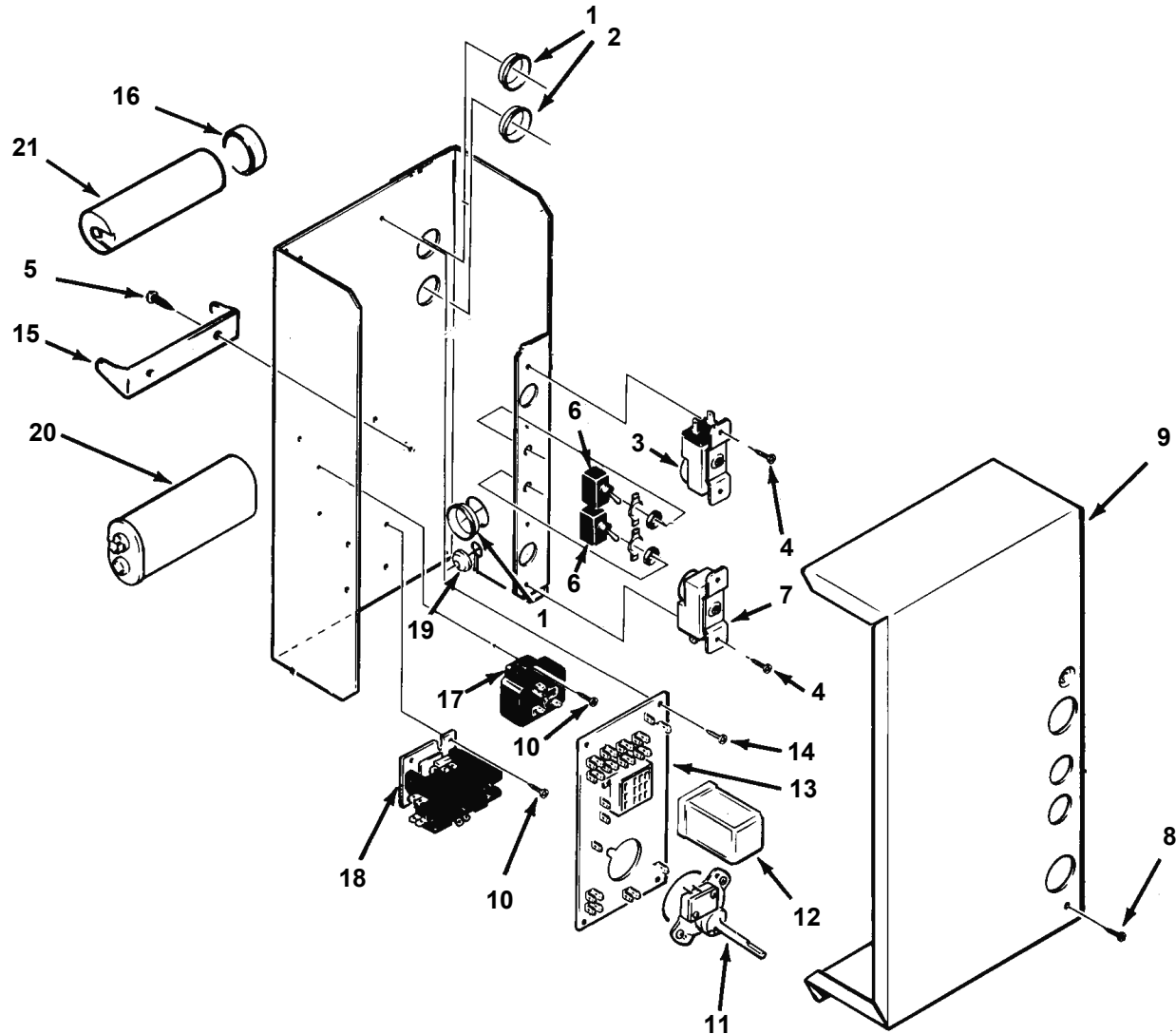
## WATER SYSTEM



| ITEM NUMBER | PART NUMBER | DESCRIPTION            | ITEM NUMBER | PART NUMBER | DESCRIPTION        |
|-------------|-------------|------------------------|-------------|-------------|--------------------|
| 1           | A29703-001  | Manifold               | 13          | 13-0674-07  | Pump hose, 33"     |
| 2           | 02-2527-01  | Water distributor tube | 14          | A32282-003  | Drain assembly, AC |
| 3           | 03-1531-01  | Screw                  | 15          | 03-1645-01  | Screw              |
| 4           | 02-2878-01  | End cover              | 16          | 12-2446-24  | Water valve        |
| 5           | 02-2868-01  | Drain trough           | 17          | A35926-001  | Water inlet tube   |
| 6           | 02-2869-01  | Reservoir              | 18          | 02-2519-01  | Tee                |
| 7           | 13-0674-07  | Drain hose, 8"         | 19          | 02-2642-01  | Plate mount        |
| 8           | 12-2265-22  | Water pump             | 20          | 03-1394-03  | Pal nut            |
| 9           | A35554-015  | Pump bracket           |             |             |                    |
| 10          | 03-1531-01  | Screw                  |             |             |                    |
| 11          | 03-1406-05  | Nut                    |             |             |                    |
| 12          | 03-1417-06  | Lockwasher             |             |             |                    |

# CME650 SERVICE PARTS

## CONTROL BOX

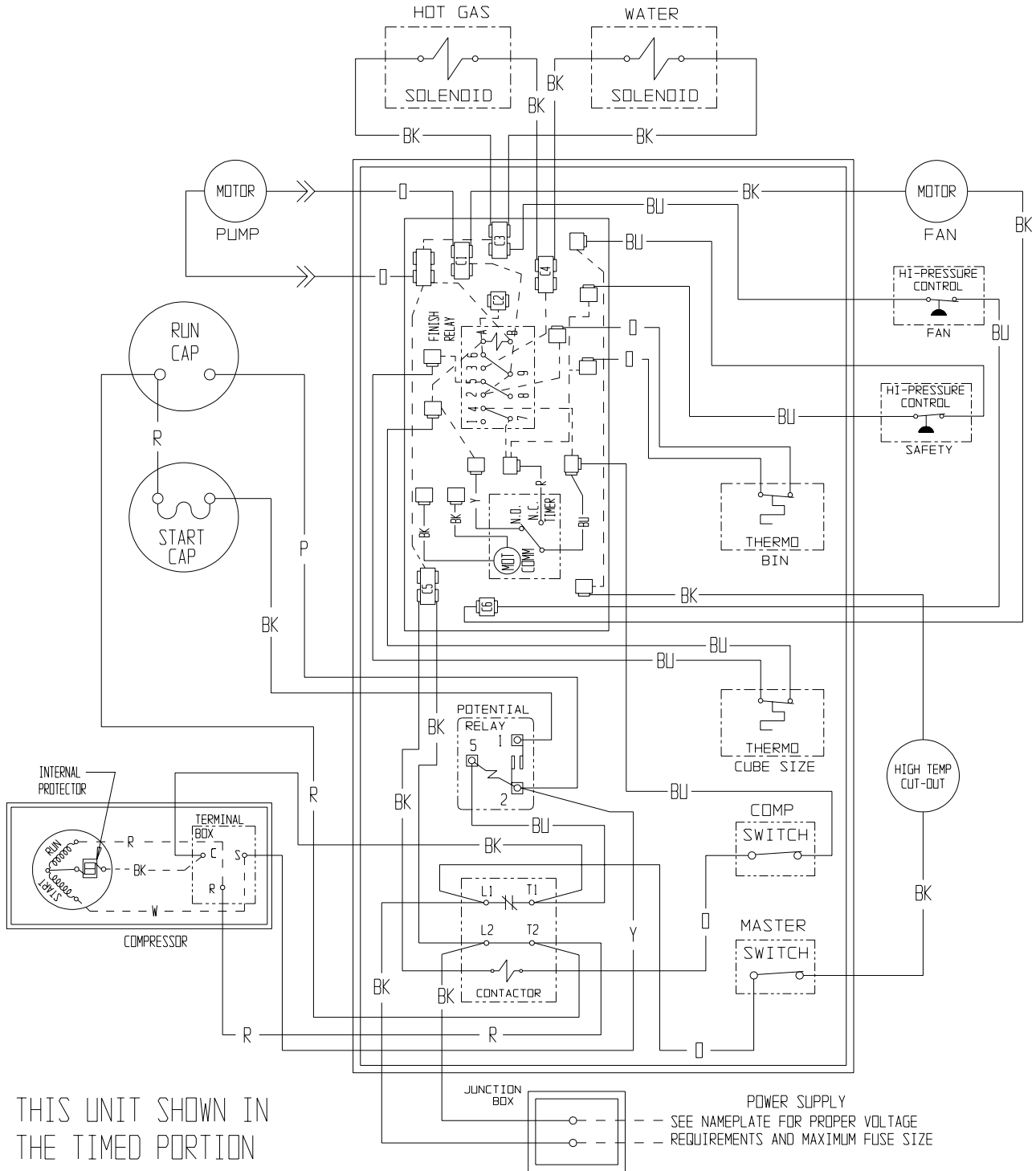


| ITEM NUMBER | PART NUMBER | DESCRIPTION                 | ITEM NUMBER | PART NUMBER | DESCRIPTION                |
|-------------|-------------|-----------------------------|-------------|-------------|----------------------------|
| 1           | 12-1213-17  | Snap bushing                | 16          | 18-2200-38  | Cap for start capacitor    |
| 2           | 12-1213-10  | Snap bushing                | 17          | 18-1903-33  | 60 Hz Potential relay      |
| 3           | 11-0428-21  | Cube size thermostat        |             | 18-1903-29  | 220v 50Hz Potential relay  |
| 4           | 03-1403-17  | Screw                       | 18          | 12-2469-02  | Contactor                  |
| 5           | 03-1418-06  | Screw                       |             | 12-0739-01  | 3 phase contactor          |
| 6           | 12-0426-01  | Toggle switch               | 19          | 12-1213-04  | Snap bushing               |
| 7           | 11-0427-22  | Bin thermostat              | 20          | 18-1902-53  | 60 Hz Run capacitor        |
| 8           | 03-1531-01  | Screw                       |             | 18-1902-53  | 220v 50 Hz Run capacitor   |
| 9           | A32168-001  | Control Box Cover           |             | 13-0666-00  | Cap for run capacitor      |
| 10          | 03-1638-03  | Screw                       |             | A32872-001  | Clamp for run capacitor    |
| 11          | 12-2317-22  | Timer & Switch              | 21          | 18-1901-15  | 60 Hz Start capacitor      |
|             | 12-2317-26  | 220v 50 Hz Timer & Switch   |             | 18-1901-52  | 220v 50 Hz Start capacitor |
| 12          | 12-1879-03  | Relay                       |             |             |                            |
| 13          | 12-1912-01  | Circuit Board               |             |             |                            |
| 14          | 03-1403-02  | Screw                       |             |             |                            |
| 15          | 18-2200-39  | Bracket for start capacitor |             |             |                            |

# CME650 SERVICE PARTS

## Air Cooled, 60 Hz, Single Phase Wiring Diagram

A35661-032



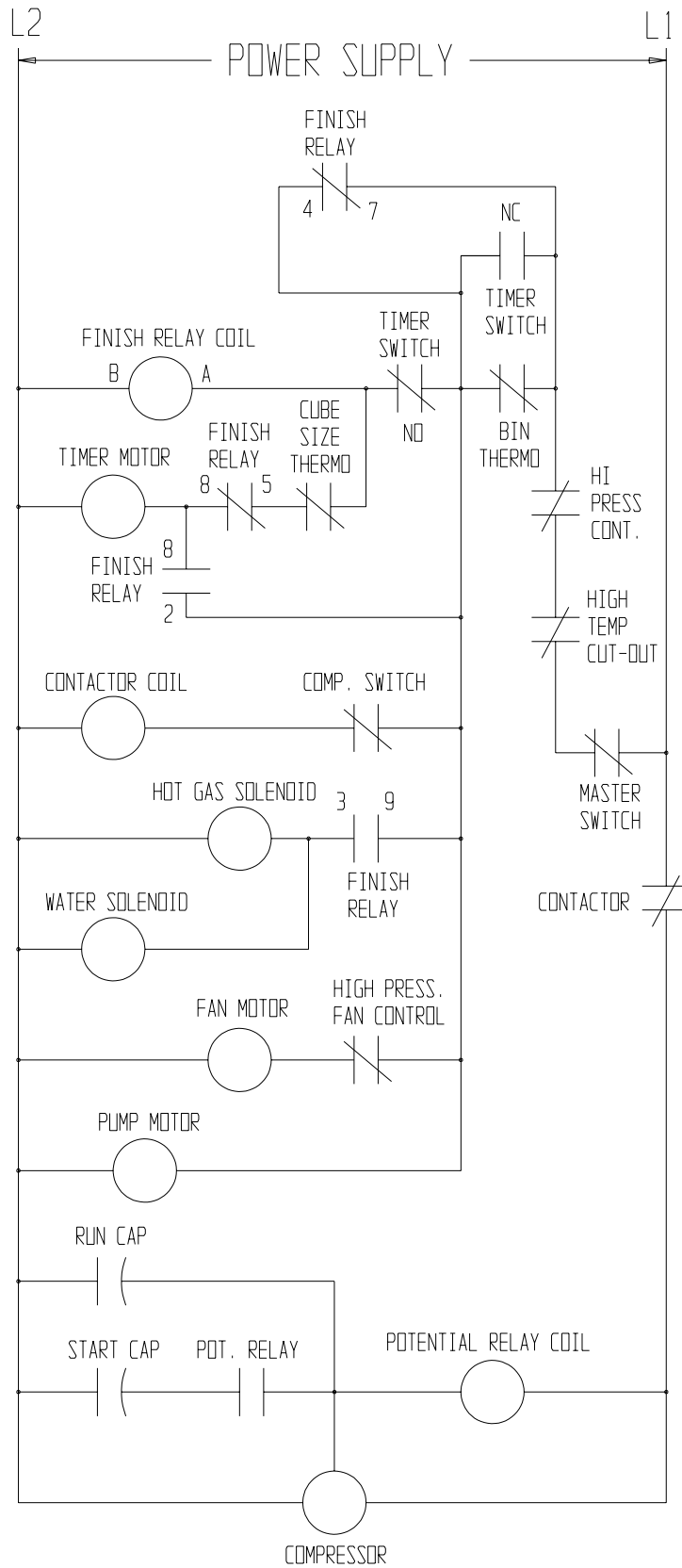
THIS UNIT SHOWN IN THE TIMED PORTION OF THE FREEZING CYCLE

USE COPPER CONDUCTORS ONLY



# CME650 SERVICE PARTS

## Air Cooled, 60 Hz, Single Phase Schematic Diagram

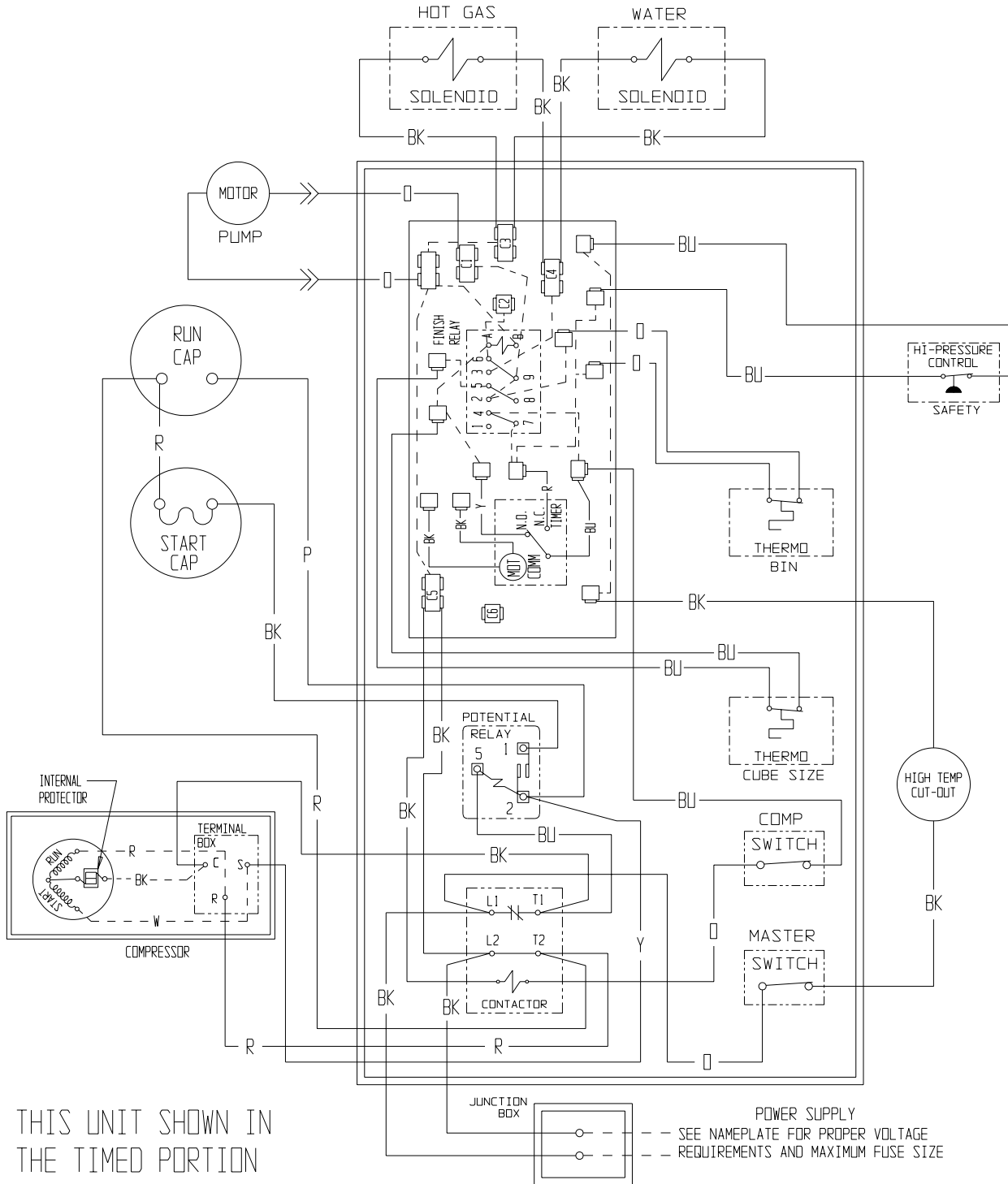


THIS UNIT MUST BE GROUNDED

# CME650 SERVICE PARTS

## Water Cooled, 60 Hz, Single Phase Wiring Diagram

A35662-032



THIS UNIT SHOWN IN THE TIMED PORTION OF THE FREEZING CYCLE

POWER SUPPLY  
 -- SEE NAMEPLATE FOR PROPER VOLTAGE REQUIREMENTS AND MAXIMUM FUSE SIZE

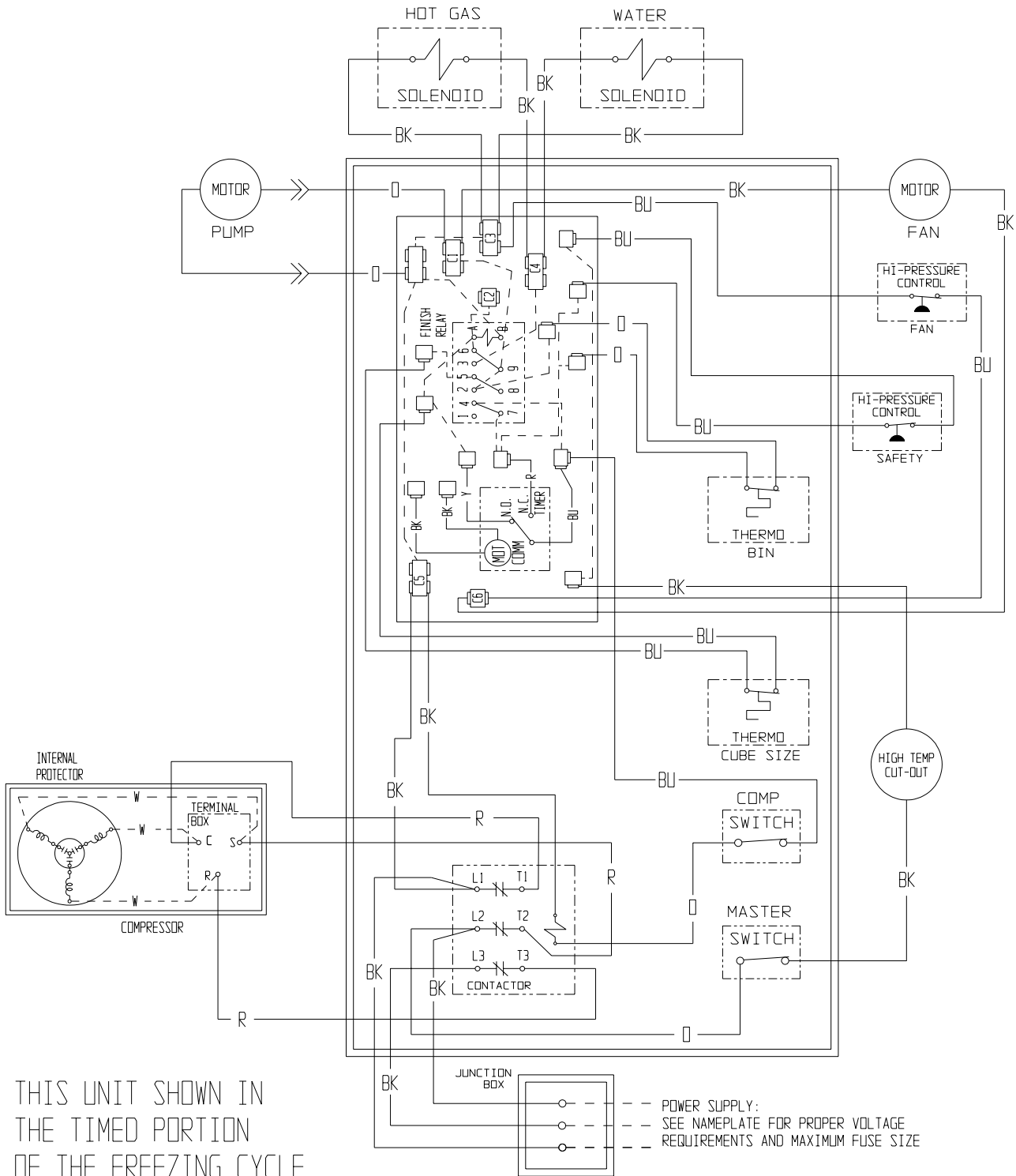
USE COPPER CONDUCTORS ONLY



# CME650 SERVICE PARTS

## Air Cooled, 60 Hz, 3 Phase Wiring Diagram

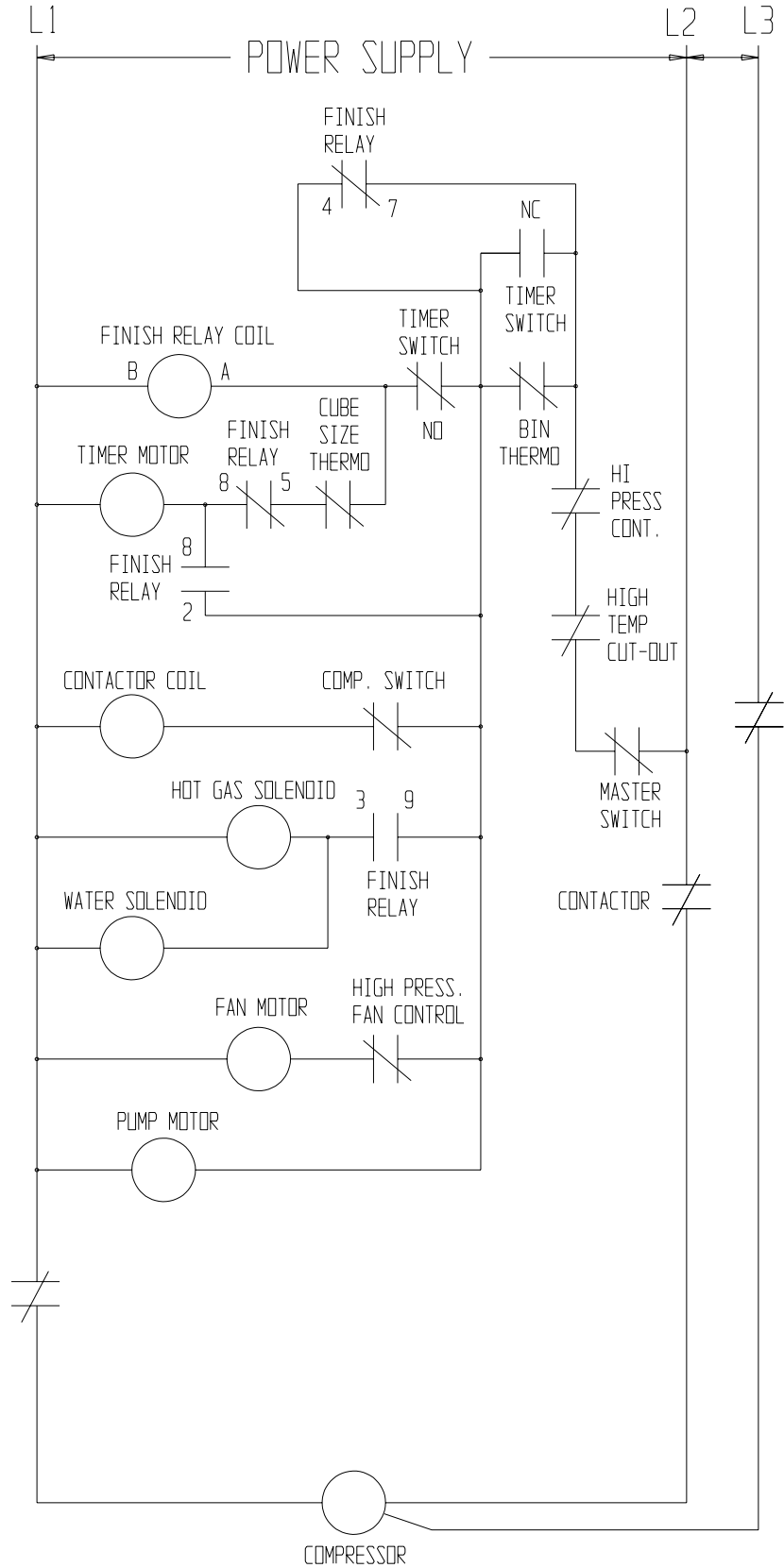
A35661-003



THIS UNIT SHOWN IN THE TIMED PORTION OF THE FREEZING CYCLE

# CME650 SERVICE PARTS

## Air Cooled, 60 Hz, 3 Phase Schematic Diagram

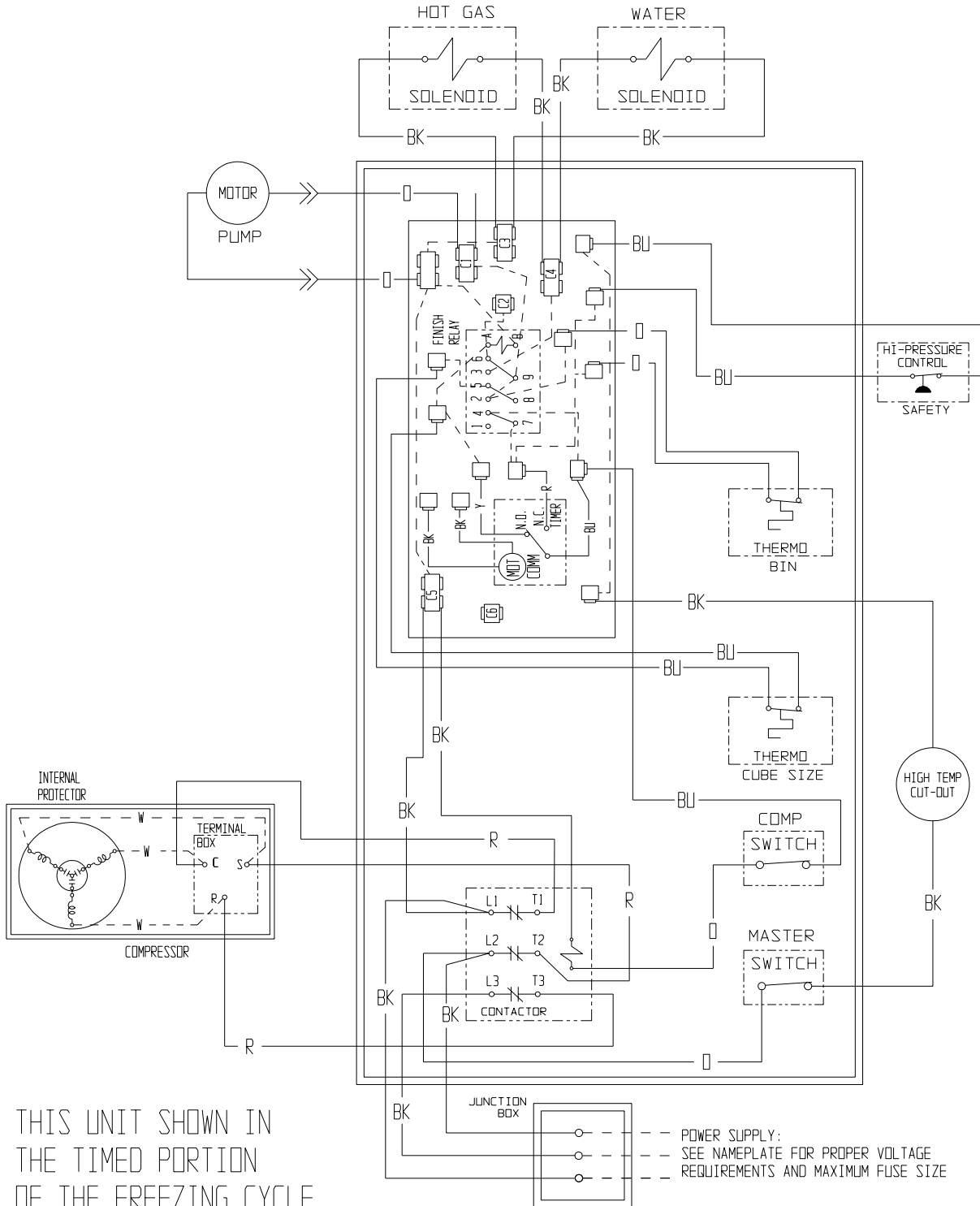


THIS UNIT MUST BE GROUNDED

# CME650 SERVICE PARTS

## Water Cooled, 60 Hz, 3 Phase Wiring Diagram

A35662-003

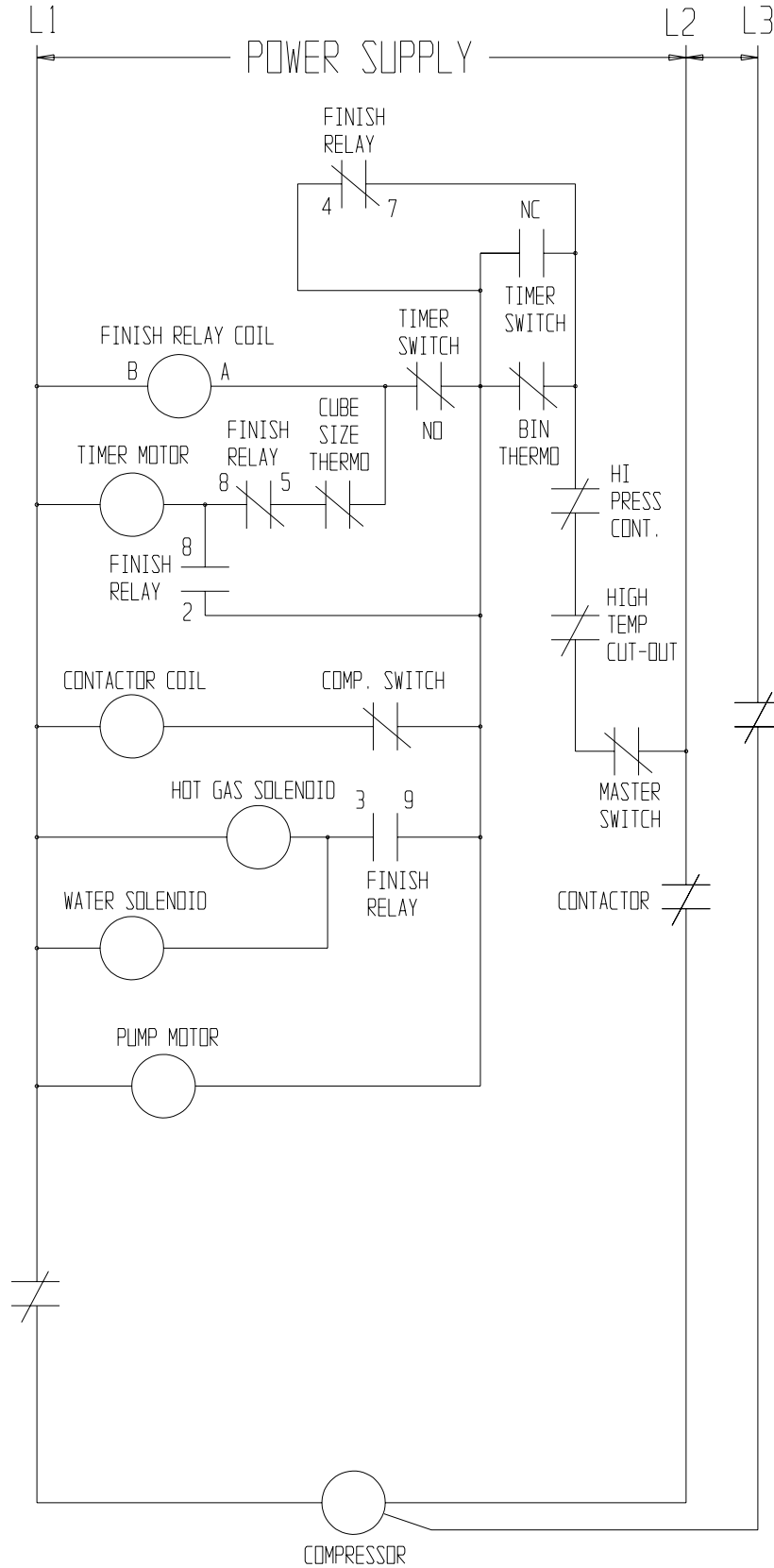


THIS UNIT SHOWN IN THE TIMED PORTION OF THE FREEZING CYCLE

USE COPPER CONDUCTORS ONLY

# CME650 SERVICE PARTS

## Water Cooled, 60 Hz, 3 Phase Schematic Diagram



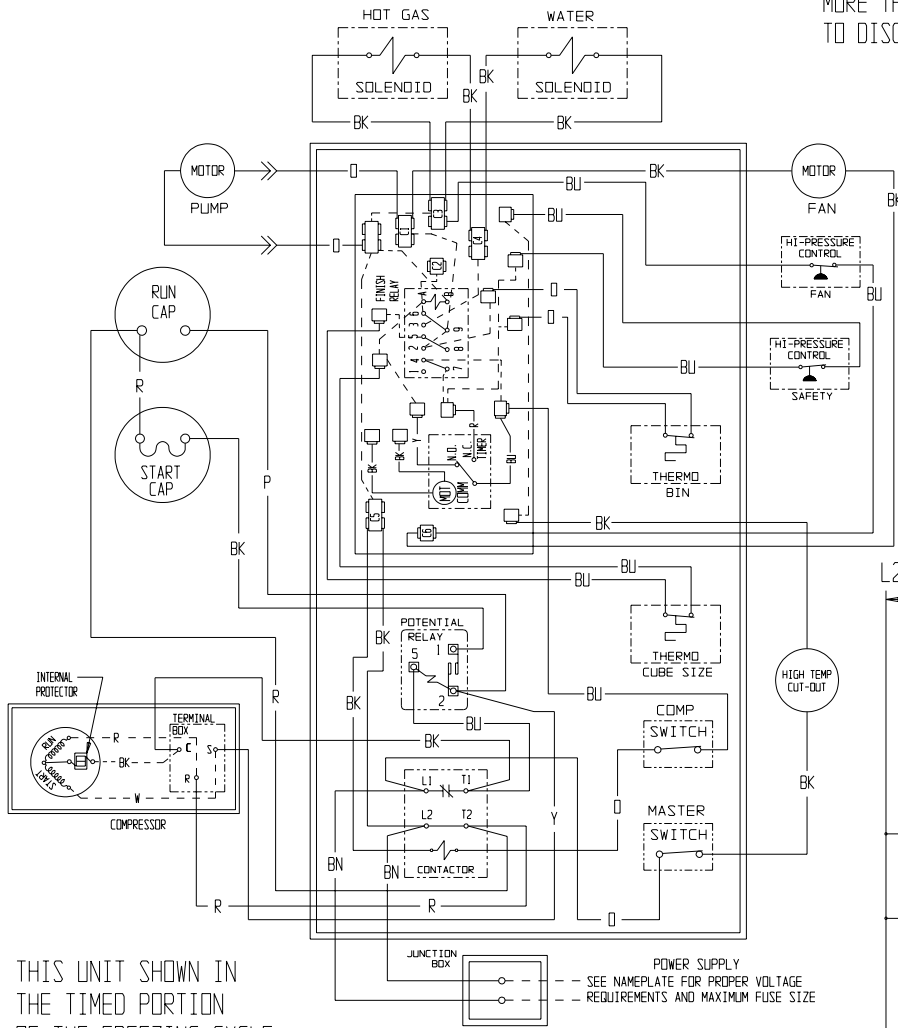
THIS UNIT MUST BE GROUNDED

# CME650 SERVICE PARTS

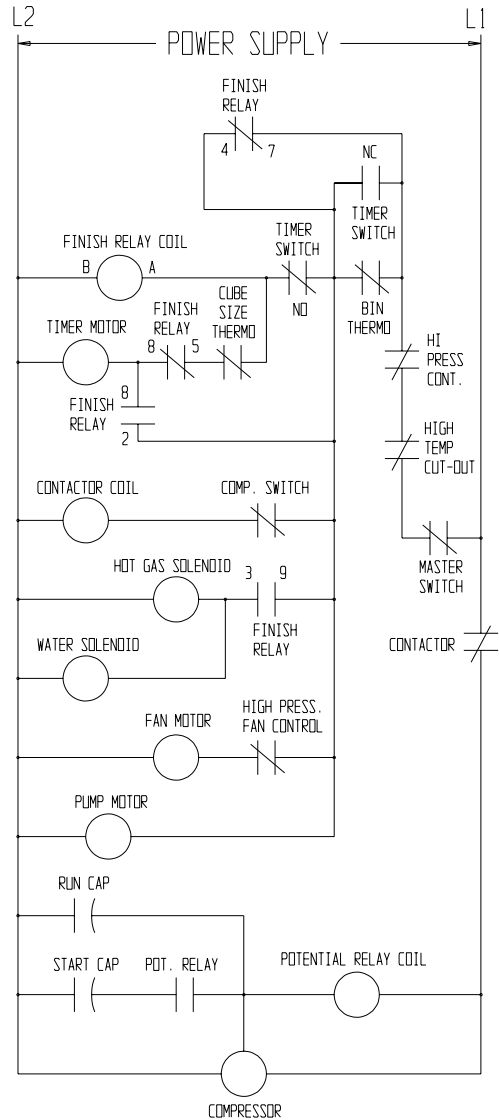
## Air Cooled, 50 Hz, Wiring and Schematic Diagrams

A35661-006

CAUTION:  
MORE THAN ONE DISCONNECT MEANS MAY BE REQUIRED  
TO DISCONNECT ALL POWER TO THIS UNIT



THIS UNIT SHOWN IN  
THE TIMED PORTION  
OF THE FREEZING CYCLE



THIS UNIT MUST BE GROUNDED

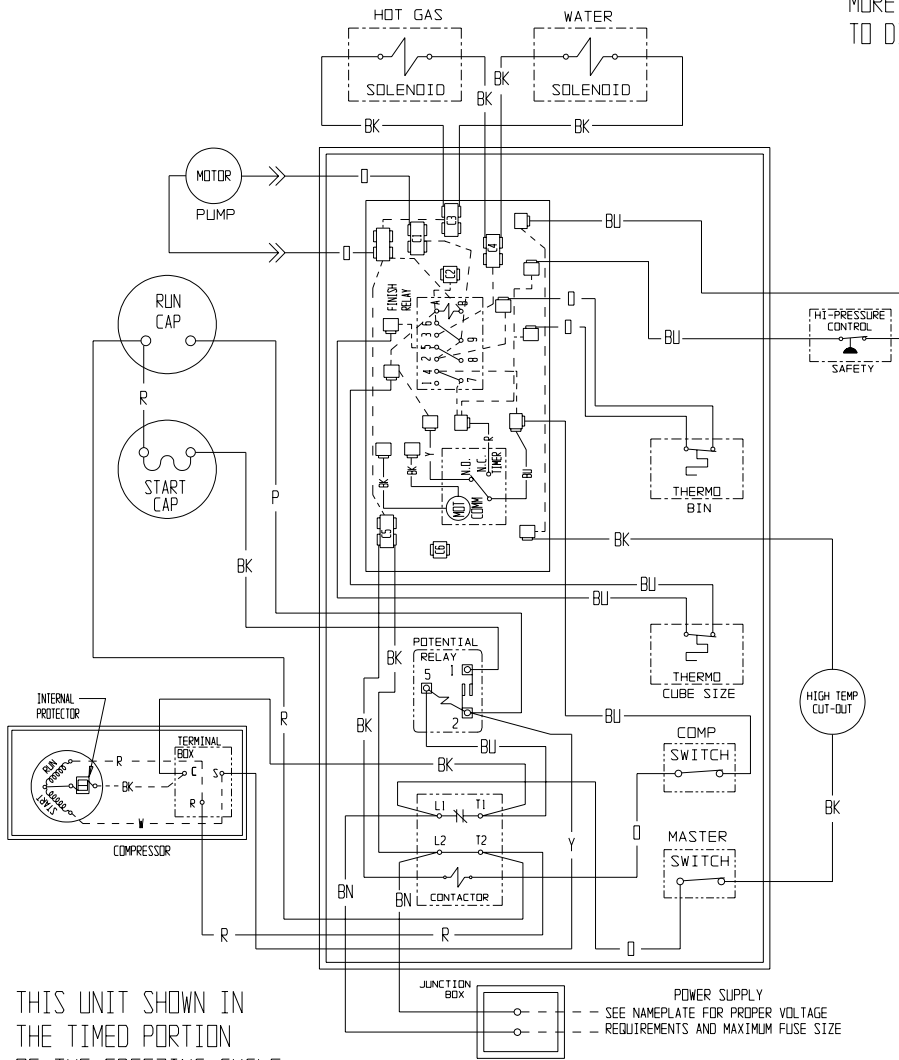


# CME650 SERVICE PARTS

## Water Cooled, 50 Hz, Wiring and Schematic Diagrams

A35662-006

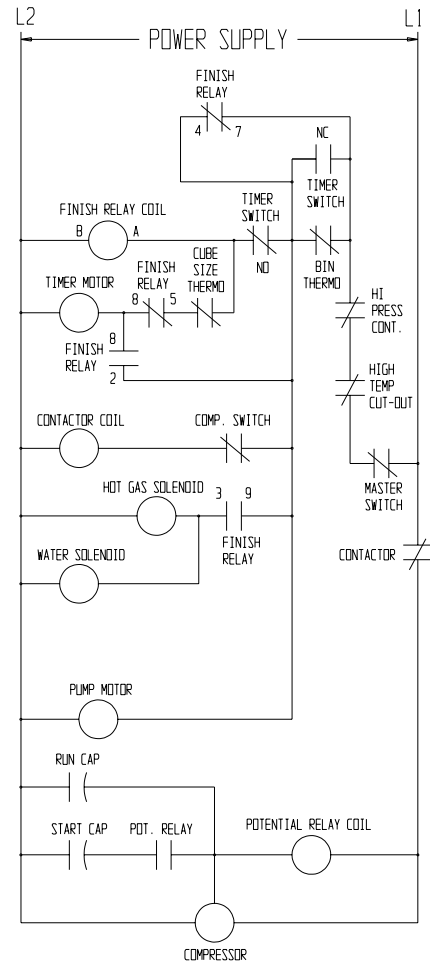
CAUTION:  
MORE THAN ONE DISCONNECT MEANS MAY BE REQUIRED  
TO DISCONNECT ALL POWER TO THIS UNIT



THIS UNIT SHOWN IN  
THE TIMED PORTION  
OF THE FREEZING CYCLE

USE COPPER CONDUCTORS ONLY

POWER SUPPLY  
-- SEE NAMEPLATE FOR PROPER VOLTAGE  
-- REQUIREMENTS AND MAXIMUM FUSE SIZE



THIS UNIT MUST BE GROUND