

CMS1202R SERVICE PARTS

This parts lists shows the service parts for the CMS1202R Remote.

Check the model number of the machine to be certain of obtaining the correct part.

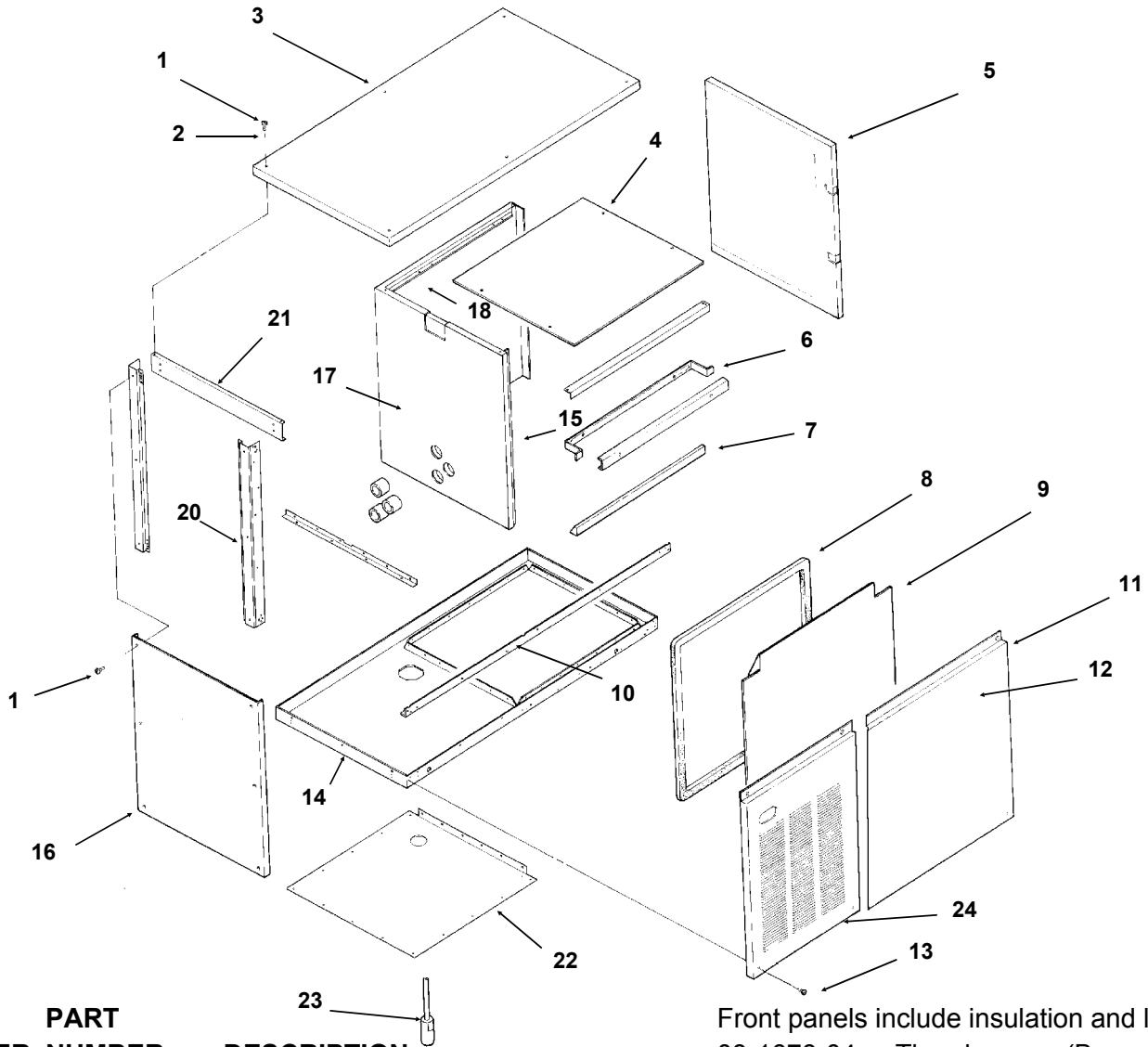
Included at the back of the parts list are the wiring diagrams.

Table of Contents

Cabinet	Page 2
Refrigeration System	Page 3
Remote Condenser	Page 4
Control Box	Page 6
BH900 Bin	Page 7
Wiring Diagrams	Page 8

CMS1202R SERVICE PARTS

CABINET PARTS



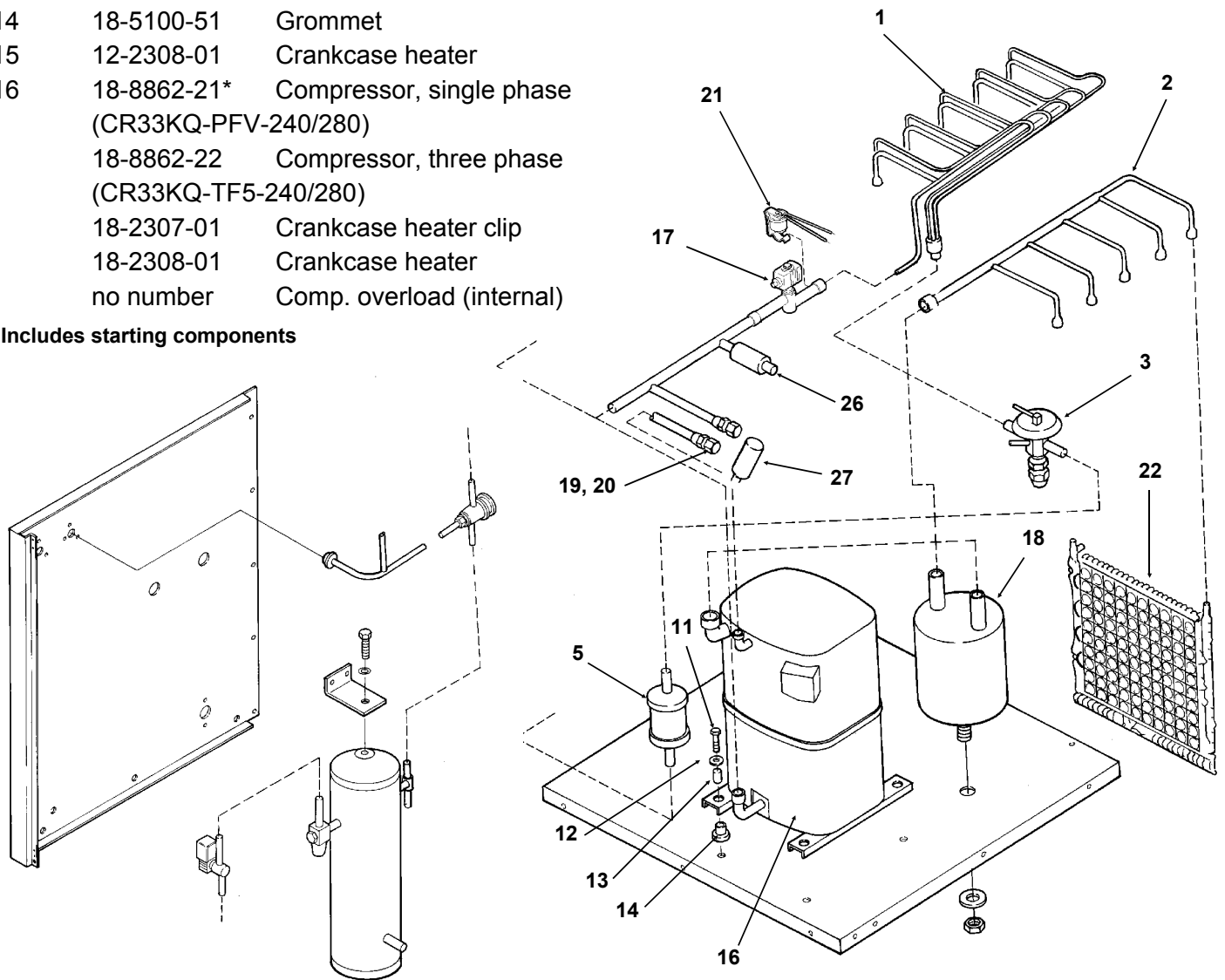
ITEM NUMBER	PART NUMBER	DESCRIPTION
1	03-1531-01	Screws
2	03-1417-27	Washers
3	A35074-001	Panel top (enamel)
	A35074-002	Panel top (stainless)
4	A33364-001	Liner top
5	A29164-003	Right panel (enamel)
	A29164-002	Right panel (stainless)
6	A29204-001	Brace front
7	02-2532-01	Liner cap
8	13-0595-00	Gasket (order per foot)
9	02-2795-01	Liner, front panel
10	03-1678-01	Speed clip (B model)
11	A35080-021	Front panel (enamel)
	A35080-022	Front panel, (stainless)
	A35401-022	B mod right front panl, stainless
	A35401-021	B mod right front panel, painted
12	15-0711-01	Emblem
13	03-1404-19	Screws
14	A35110-001	Base assembly
15	02-2533-01	Liner, left side
16	A35075-001	Left side panel, enamel
	A35075-002	Left side panel, stainless
17	no number	Retainer
18	02-2531-01	Liner back
19	02-2534-01	Right side liner
20	A35069-001	Corner post
21	A35066-001	Brace
22	02-3151-01	Plastic cover
23	A34908-021	Transducer
24	A35400-001	B model left frnt pnl, painted

CMS1202R SERVICE PARTS

REFRIGERATION SYSTEM

ITEM NUMBER	PART NUMBER	DESCRIPTION	ITEM NUMBER	PART NUMBER	DESCRIPTION
1	A35122-001	Evap. manifold assy	17	12-2135-22	Hot gas valve
2	16-0887-01	Manifold assy		02-3231-03	Hot gas valve filter
3	16-0816-21	Expansion valve	18	16-0817-21	Accumulator
	13-0617-51	O-Ring	19	16-0560-00	Valve core
	02-2920-01	Foam insulation	20	16-0563-00	Valve cap
4	12-2274-01	Liquid line solenoid valve	21	12-2300-07	Hi temp cut out
5	02-3319-01	Drier	22	A30296-020	Evaporator plate
6	16-0761-01	Receiver	23	16-0850-01	Discharge quick connect
7	A35072-001	Receiver bracket	24	16-0850-03	Liquid quick connect
8	03-1410-06	Lockwasher	25	A35070-001	Back panel
9	03-1406-13	Nut	26	11-0446-25	Hi pressure cut out
10	11-0422-22	Head pressure reg. valve	27	11-0467-21	Pump down control
11	03-1405-20	Screw			
12	03-1407-07	Washer			
13	18-2200-28	Sleeve			
14	18-5100-51	Grommet			
15	12-2308-01	Crankcase heater			
16	18-8862-21*	Compressor, single phase (CR33KQ-PFV-240/280)			
	18-8862-22	Compressor, three phase (CR33KQ-TF5-240/280)			
	18-2307-01	Crankcase heater clip			
	18-2308-01	Crankcase heater			
	no number	Comp. overload (internal)			

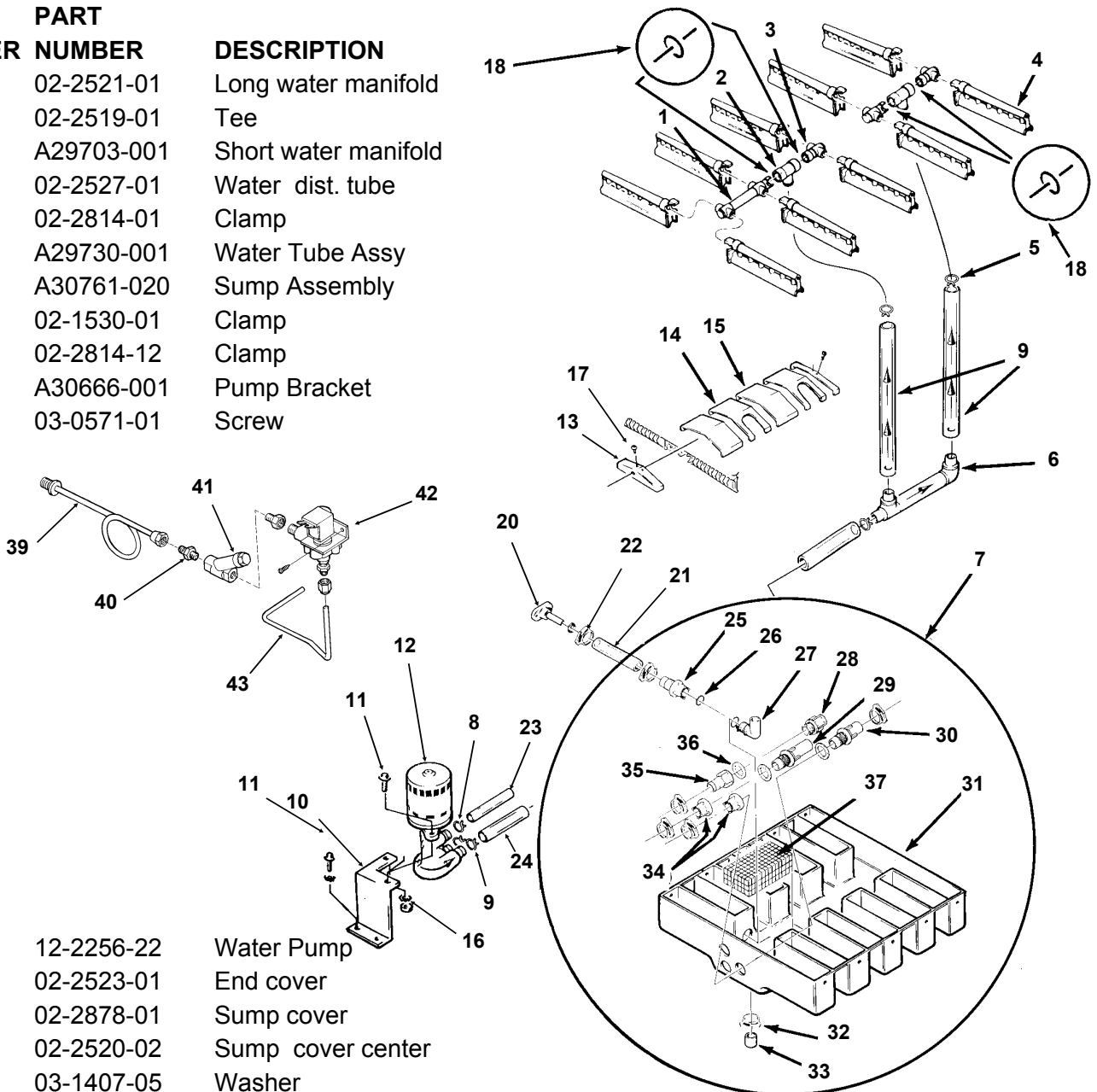
* Includes starting components



CMS1202R SERVICE PARTS

WATER SYSTEM

ITEM NUMBER	PART NUMBER	DESCRIPTION
1	02-2521-01	Long water manifold
2	02-2519-01	Tee
3	A29703-001	Short water manifold
4	02-2527-01	Water dist. tube
5	02-2814-01	Clamp
6	A29730-001	Water Tube Assy
7	A30761-020	Sump Assembly
8	02-1530-01	Clamp
9	02-2814-12	Clamp
10	A30666-001	Pump Bracket
11	03-0571-01	Screw

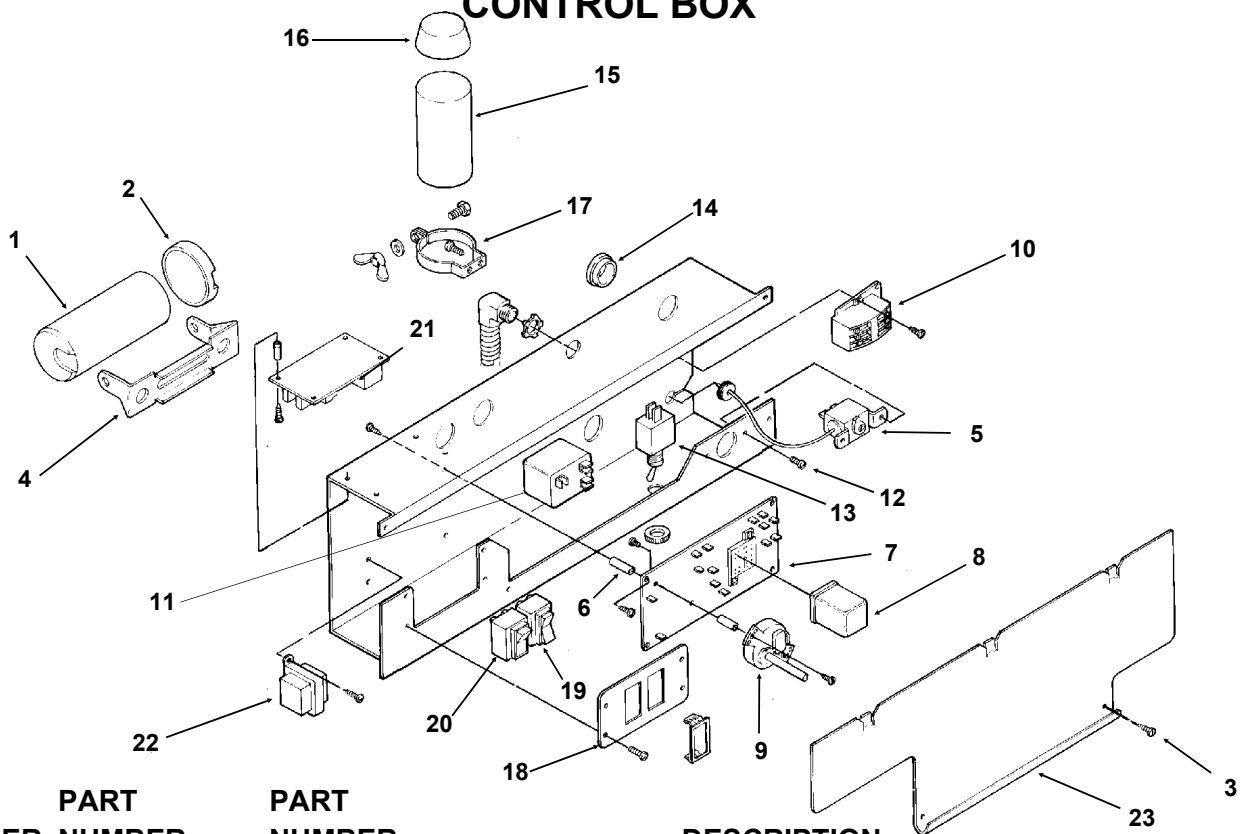


12	12-2256-22	Water Pump
13	02-2523-01	End cover
14	02-2878-01	Sump cover
15	02-2520-02	Sump cover center
16	03-1407-05	Washer
17	03-1531-01	Screw
18	13-0617-48	O-ring
19	13-0674-07	Hose (18.5")
20	A32282-003	Drain
21	13-0674-07	Tube, drain (7")
22	02-2814-12	Hose clamp
23	13-0674-07	Tube, need 6.25"
24	13-0674-08	Tube, need 6.6"
25	02-2606-01	Female tube
26	13-0617-02	O-ring
27	02-2125-01	Elbow
28	02-2080-01	Overflow
29	02-2792-01	Pick Up tube

30	02-2793-01	Inlet tube
31	no number	sump pan
32	02-1530-01	Clamp
33	13-0796-01	Rubber cap
34	02-2791-01	Water inlet nut
35	02-2606-01	Female tube
36	13-0617-02	O-ring
37	A30760-001	Screen
39	A35119-001	Water inlet assy.
40	16-0791-01	Half unio
41	16-0162-00	Strainer
42	12-1646-04	Inlet water valve
43	A35117-001	Tube

CMS1202R SERVICE PARTS

CONTROL BOX

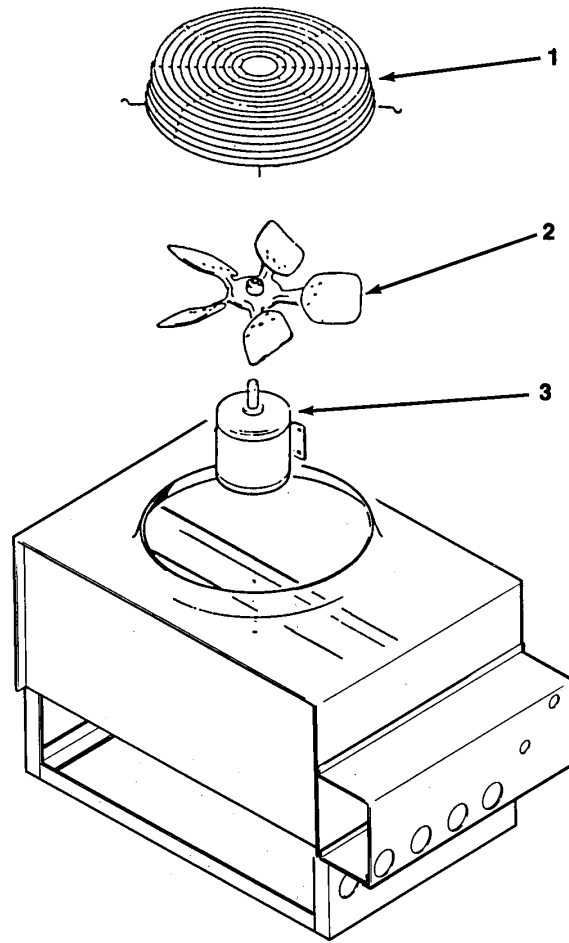


ITEM NUMBER	PART NUMBER	PART NUMBER	PART NUMBER	DESCRIPTION
	3 phase	single phase	Repl. comp*	
1	-	18-1901-48	18-1901-27	Start Capacitor
2	-	18-8702-01		Start Cap. Cap
3	-	03-1638-03		Screw
4	-	18-2200-39		Start cap. bracket
5	11-0351-22	same		Cube Size Control
6	02-2242-02	same		Stand off
7	12-1912-01	same		Circuit board
8	12-1879-03	same		Relay
9	12-2317-22	same		Timer & Switch
10	12-0739-02	12-2469-02		Contactor
11	-	18-1903-46	18-1903-56	Potential Relay
12	03-1403-17	same		Screw
13	12-0426-01	same		Comp. Switch
14	-	12-1213-12		Snap busing
15	-	18-1902-27		Run capacitor
16	-	13-0666-00		Terminal cover
17	-	A34314-001		Run Cap Bracket
18	02-3173-01	same		Switch plate
19	12-2414-01	same		Wash- Off - Ice switch
20	12-2411-01	same		Bin ice level switch
	12-2402-01	same		Wire harness, bin level switch to board
21	12-2376-21	same		Ice level control circuit board
22	12-2285-22	same		Transformer
23	A35082-001	same		Control box cover

* Start capacitor and relay are different on later replacement compressors. Check compressor model. Original was CRG3-0250-PFV-270, late replacement model is CR33KQ-PVF-240/280

CMS1202R SERVICE PARTS

REMOTE CONDENSER

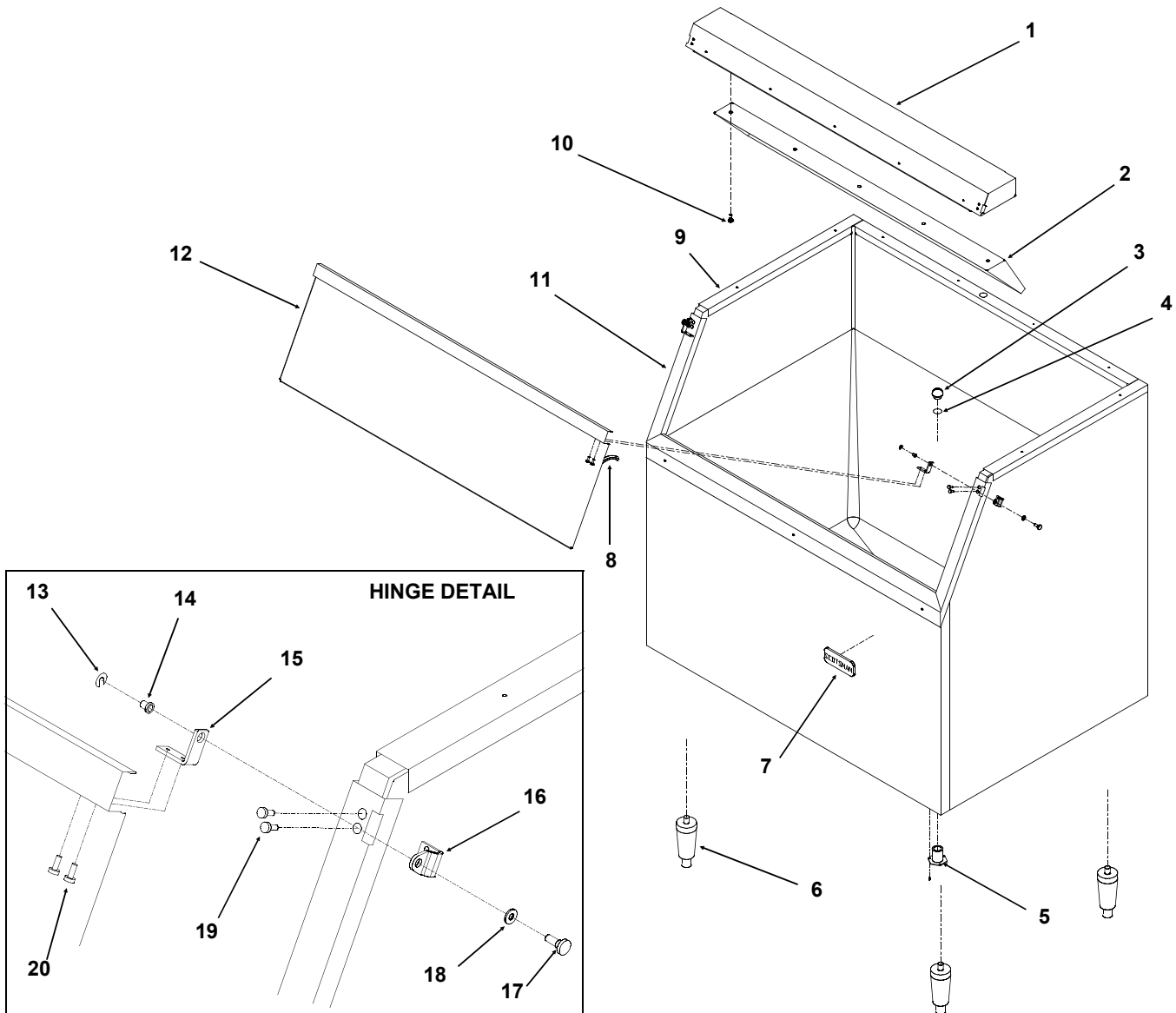


RC1422-32

ITEM NUMBER	PART NUMBER	DESCRIPTION
1	02-2618-01	Fan guard
2	18-6304-01	Fan blade
3	18-5301-01	Fan motor
Not Shown:		
4	16-0850-03	Quick connect, liquid
5	16-0850-01	Quick connect, discharge
6	16-1057-01	Quick connect, pre-charged 3/8" line
7	16-1057-02	Quick connect, pre-charged 1/2" line

CMS1202R SERVICE PARTS

BH900 ICE STORAGE BIN



ITEM NUMBER	PARTS NUMBER	DESCRIPTION
1	A35322-020	Canopy Assembly
2	A35152-001	Ice Baffle
3	02-2809-01	Drain Top
4	13-0617-11	O-ring
5	02-3201-01	Drain casting
6	KLP2E	Leg Kit, Black
	KLP2S	Leg Kit, Nickel Plated
7	15-0711-01	Emblem
8	13-0595-00	Door gasket(6.25' reg.)
9	19-0503-04	Bin gasket
10	03-0727-11	Baffle screw
11	A35275-001	Door frame assy.
12	A35323-020	Door with gasket
13	03-1539-09	"E" ring

ITEM NUMBER	PARTS NUMBER	DESCRIPTION
14	02-2380-01	Hinge bushing
15	02-3195-01	Door hinge
16	02-3196-01	Bin hinge
17	02-2806-01	Shoulder screw
18	02-2380-02	Spacer
19	03-1403-29	Screw 10-24
20	03-1403-24	Screw 10-24
21	02-0540-00	Scoop
Not Shown		
22	A35280-001	Left bin channel
23	A35311-001	Back bin channel
24	A35279-001	Right bin channel
25	02-3202-01	Trim guard for canopy

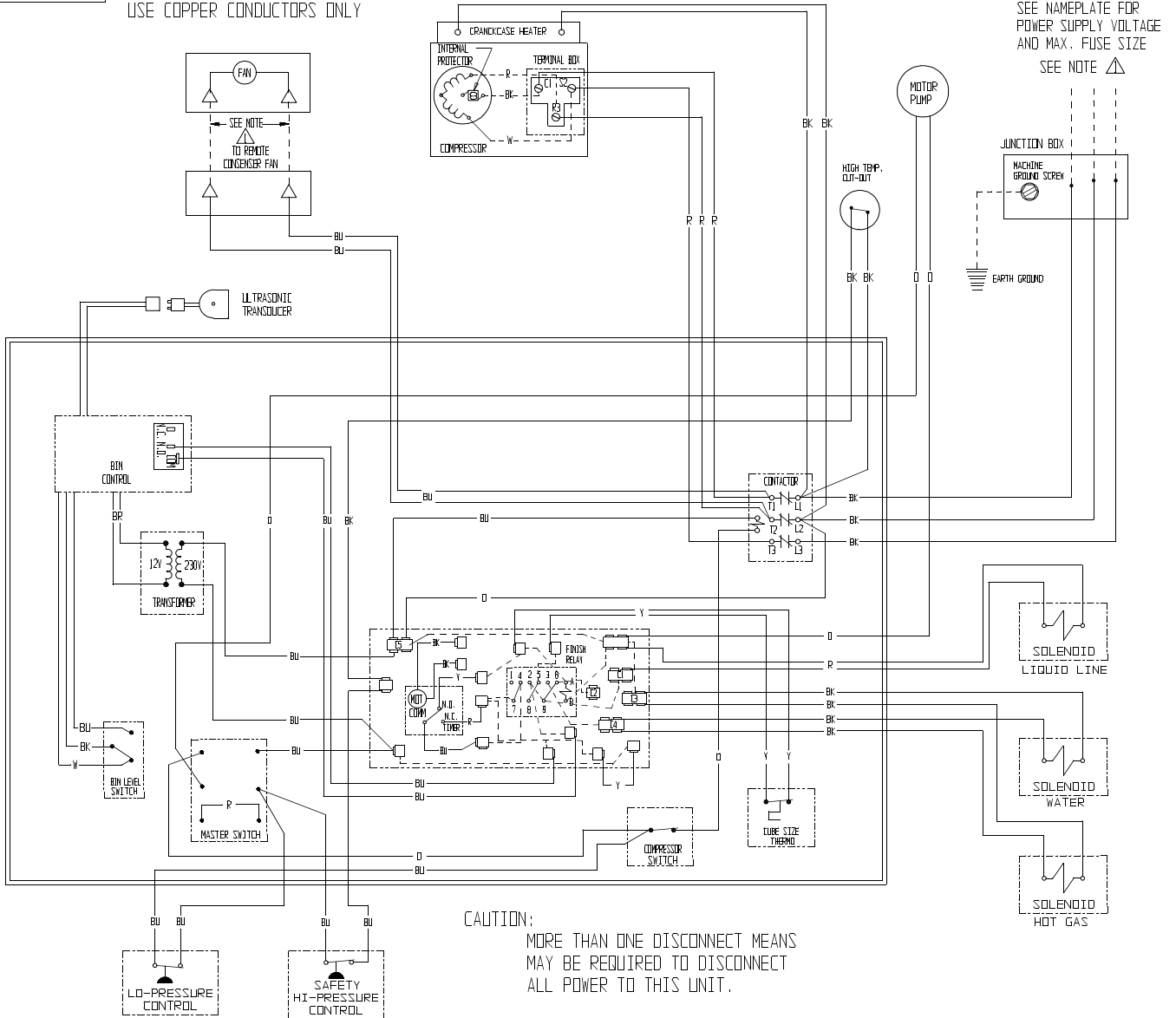
CMS1202R SERVICE PARTS

208-230/60/3

Remote Air Cooled

A35441-003

THIS UNIT MUST BE GROUNDED
USE COPPER CONDUCTORS ONLY



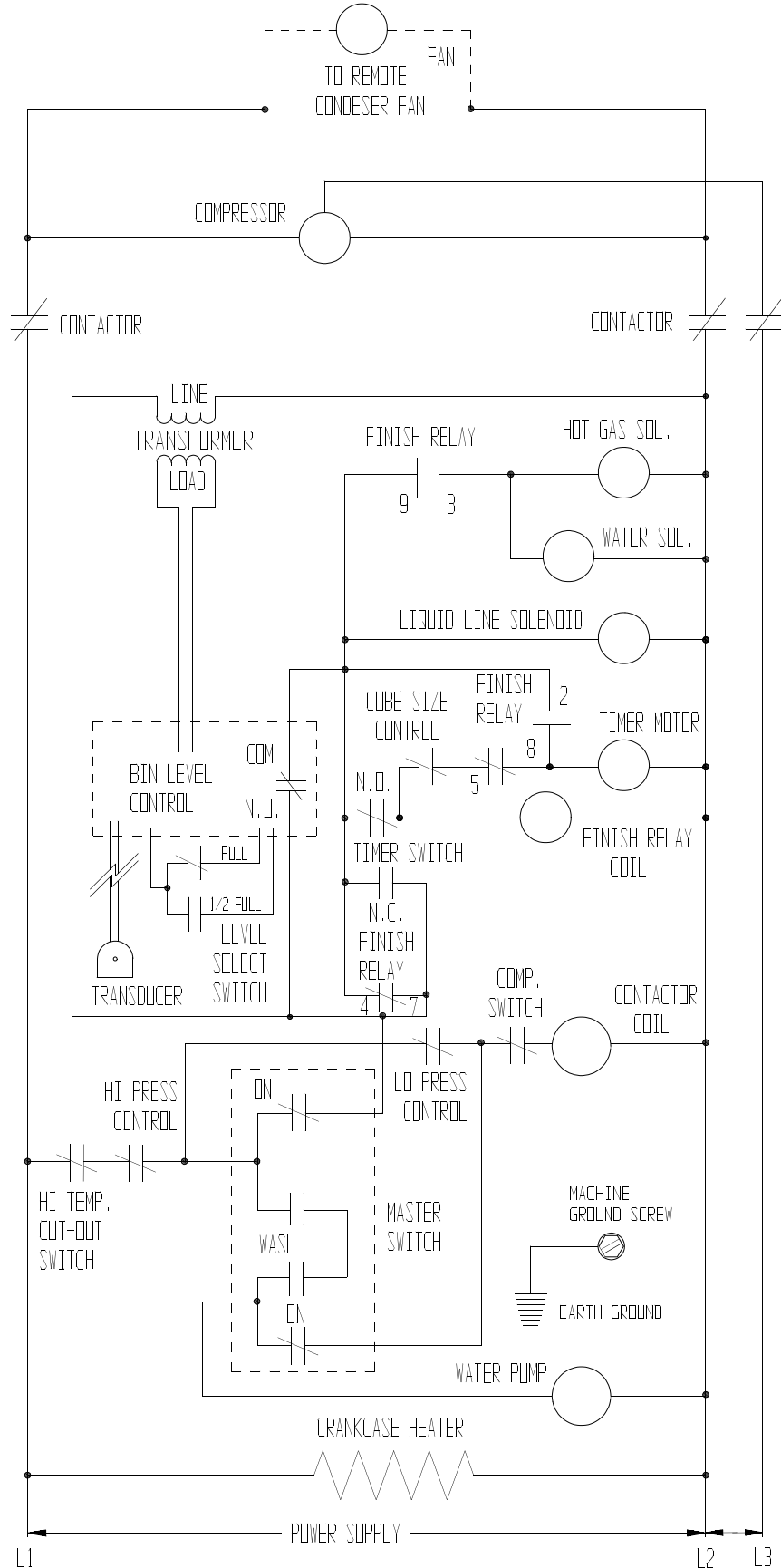
SEE NAMEPLATE FOR
POWER SUPPLY VOLTAGE
AND MAX. FUSE SIZE
SEE NOTE ⚠

CAUTION:
MORE THAN ONE DISCONNECT MEANS
MAY BE REQUIRED TO DISCONNECT
ALL POWER TO THIS UNIT.

CMS1202R SERVICE PARTS

208-230/60/3

Remote Air Cooled



CMS1202R SERVICE PARTS

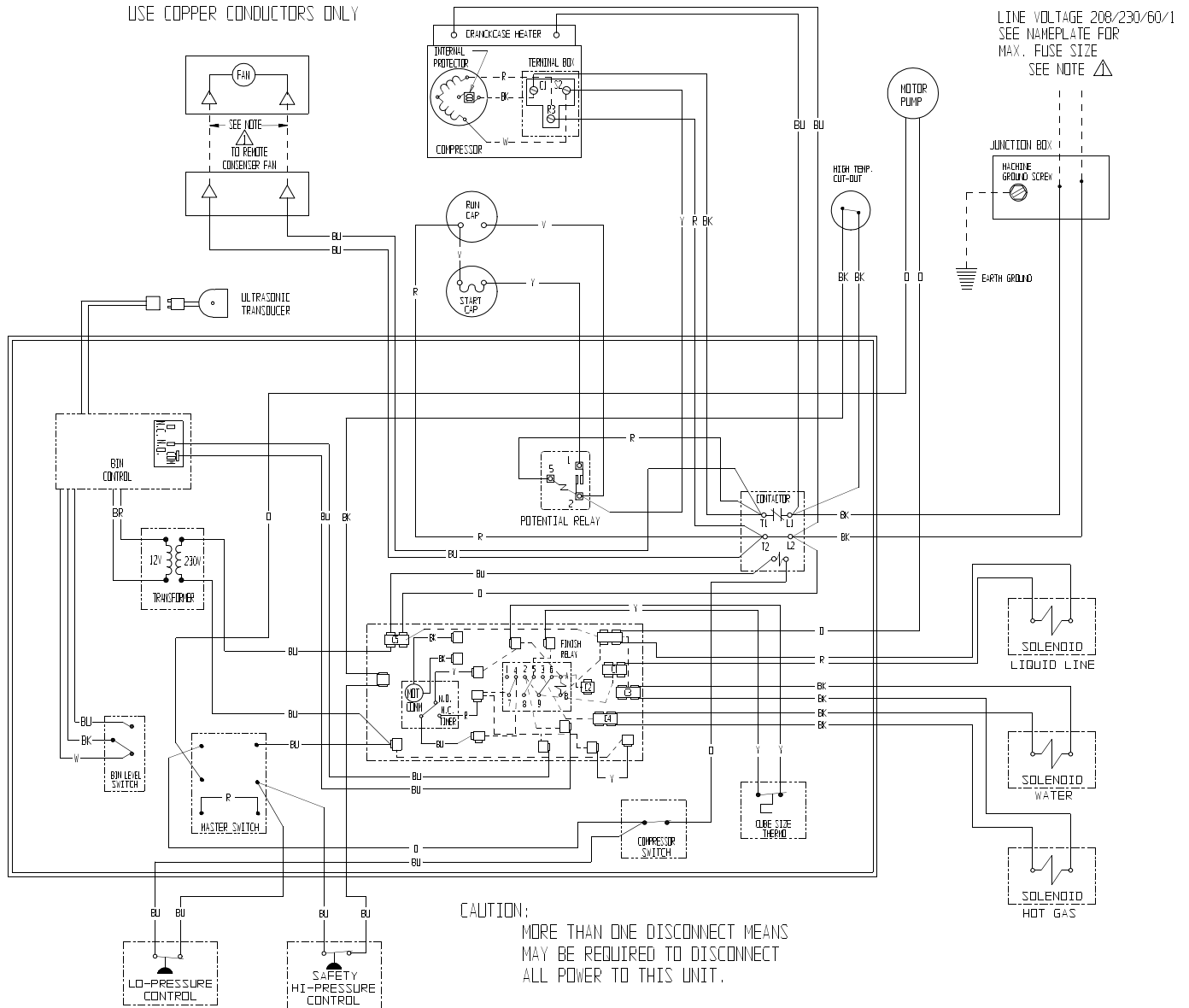
208-230/60/1

Remote Air Cooled

NOTE:
▲ DASHED LINES INDICATE FIELD WIRING WHICH MUST BE
INSTALLED IN ACCORDANCE WITH THE NATIONAL ELECTRICAL
CODE AND ALL STATE AND LOCAL CODES.

THIS UNIT SHOWN IN THE TIMED PORTION
OF THE FREEZING CYCLE

THIS UNIT MUST BE GROUNDED
USE COPPER CONDUCTORS ONLY



LINE VOLTAGE 208/230/60/1
SEE NAMEPLATE FOR
MAX. FUSE SIZE
SEE NOTE ▲

CAUTION:
MORE THAN ONE DISCONNECT MEANS
MAY BE REQUIRED TO DISCONNECT
ALL POWER TO THIS UNIT.

CMS1202R SERVICE PARTS

208-230/60/1

Remote Air Cooled

