

# EH330 and EH430 Service Parts

This part list contains the service parts for the Eclipse 1200, 1400, 1800 and 2000 systems.

The models that are covered include:

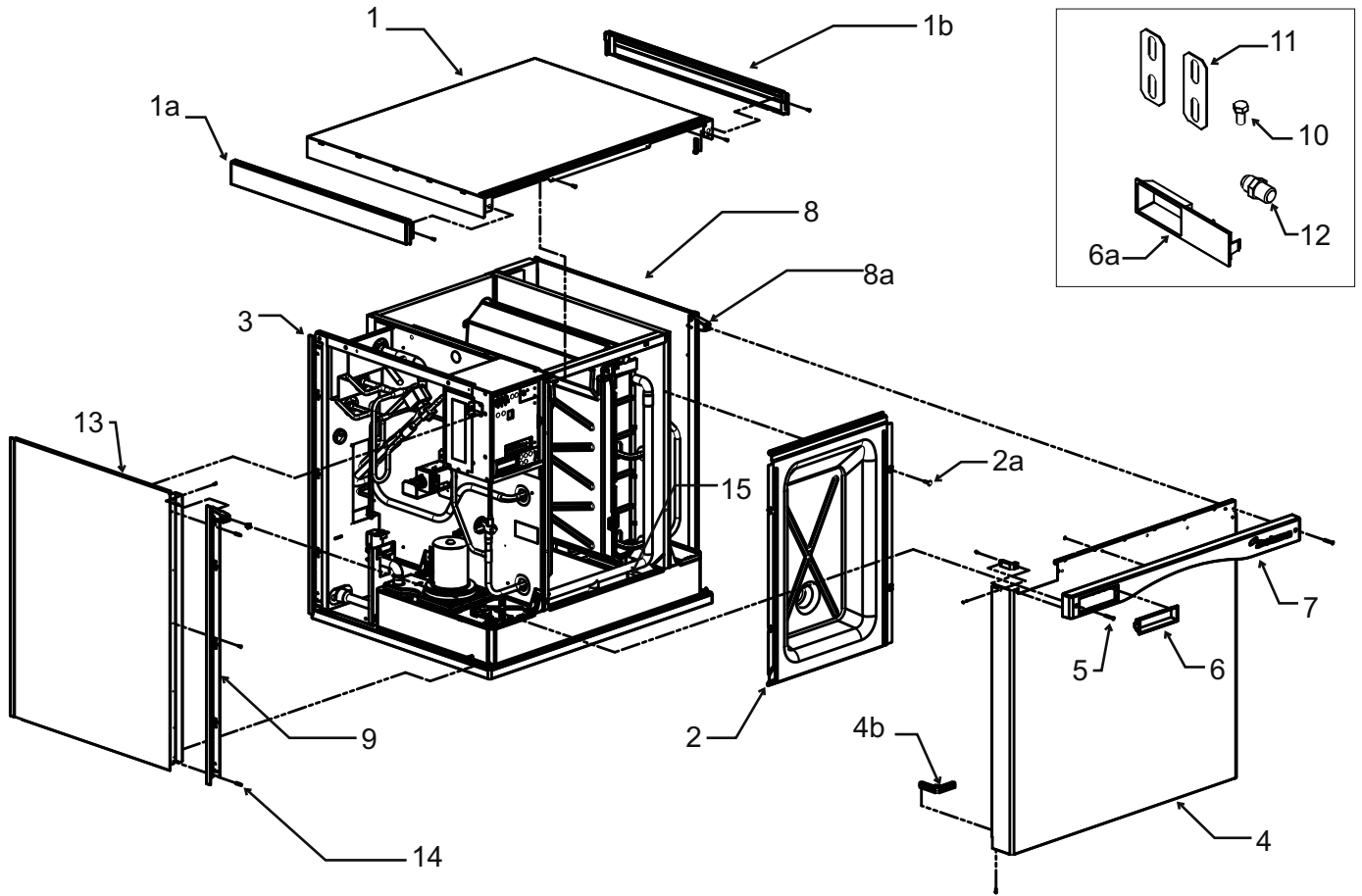
- EH330
- EH430
- C1200CP
- C1410CP
- C1800CP
- C2000CP
- ERC1086
- ERC2086

## Table of Contents

EH330 Cabinet - <u>A Series</u> . . . . .	Page 2	EH330 or EH430 Schematic Diagram . . . . .	Page 18
EH330 Cabinet - <u>B Series</u> . . . . .	Page 3	EH330 or EH430 Wiring Diagram . . . . .	Page 19
EH430 Cabinet - <u>A Series</u> . . . . .	Page 4	CP Single Phase Schematic Diagram . . . . .	Page 20
EH430 Cabinet - <u>B Series</u> . . . . .	Page 5	CP Single Phase Wiring Diagram . . . . .	Page 21
EH330 and EH430 Interior Parts . . . . .	Page 6	CP Three Phase Wiring Diagram . . . . .	Page 22
EH330 and EH430 Refrigeration System . . . . .	Page 7	CP Three Phase Schematic Diagram . . . . .	Page 23
EH330 Evaporator Compartment . . . . .	Page 8		
EH430 Evaporator Compartment . . . . .	Page 9		
EH330 or EH430 Electrical . . . . .	Page 10		
CP Cabinet . . . . .	Page 11		
C1200CP Refrigeration System . . . . .	Page 12		
C1410CP Refrigeration Systems . . . . .	Page 13		
C1800CP Refrigeration System . . . . .	Page 14		
C2000CP Refrigeration System . . . . .	Page 15		
CP Control Box . . . . .	Page 16		
Remote Condensers . . . . .	Page 17		

# EH330 and EH430 Service Parts

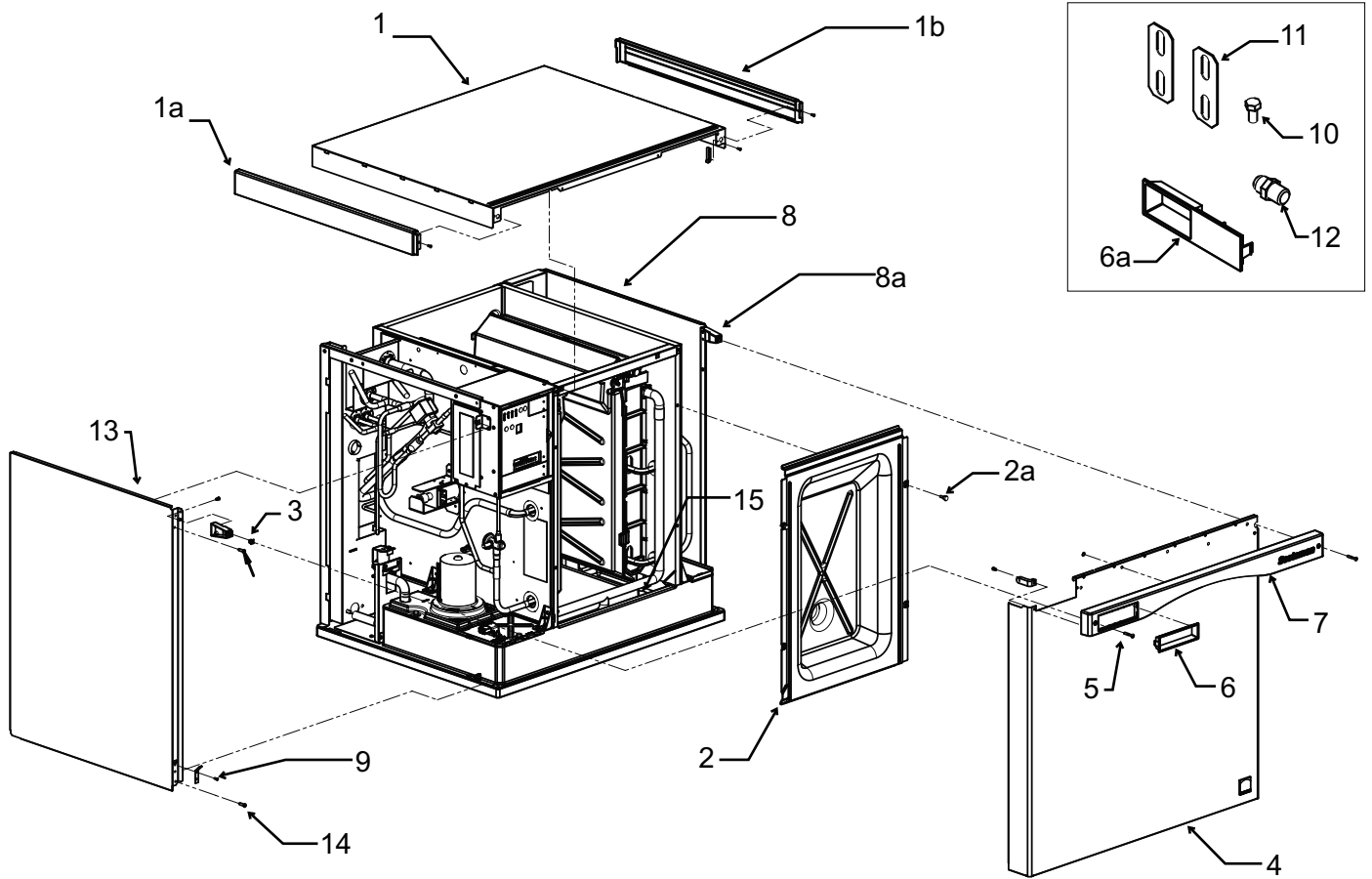
## EH330 Cabinet - A Series



Item Number	Part Number	Description	Part Number	Description
1	A38941-022	Top panel, w/trim strips	8a	02-4215-01 Receptacle
1a	02-4221-01	Left trim strip	9	02-4067-01 Side panel support
1b	02-4221-02	Right trim strip	10	03-1405-15 Screw
2	02-4504-01	Evaporator cover	11	A30911-015 Machine straps
2a	03-0727-05	Screw	12	16-0355-00 Inlet water fitting, flare
3	02-4067-03	Side panel support	13	A38551-022 Left side panel
4	A38552-022	Front panel assembly, includes trim strip, gussets and labels.	14	03-1404-12 Screw
4a	02-4216-01	Top gusset	15	13-0943-01 Gasket tape
4b	02-4217-01	Bottom gusset		
5	03-1735-03	Screw, front panel		
6	02-4284-01	Bezel, full window		
6a	02-4284-02	Bezel, partial window		
7	02-4214-02	Trim strip		
8	A38553-021	Right side panel assy		

# EH330 and EH430 Service Parts

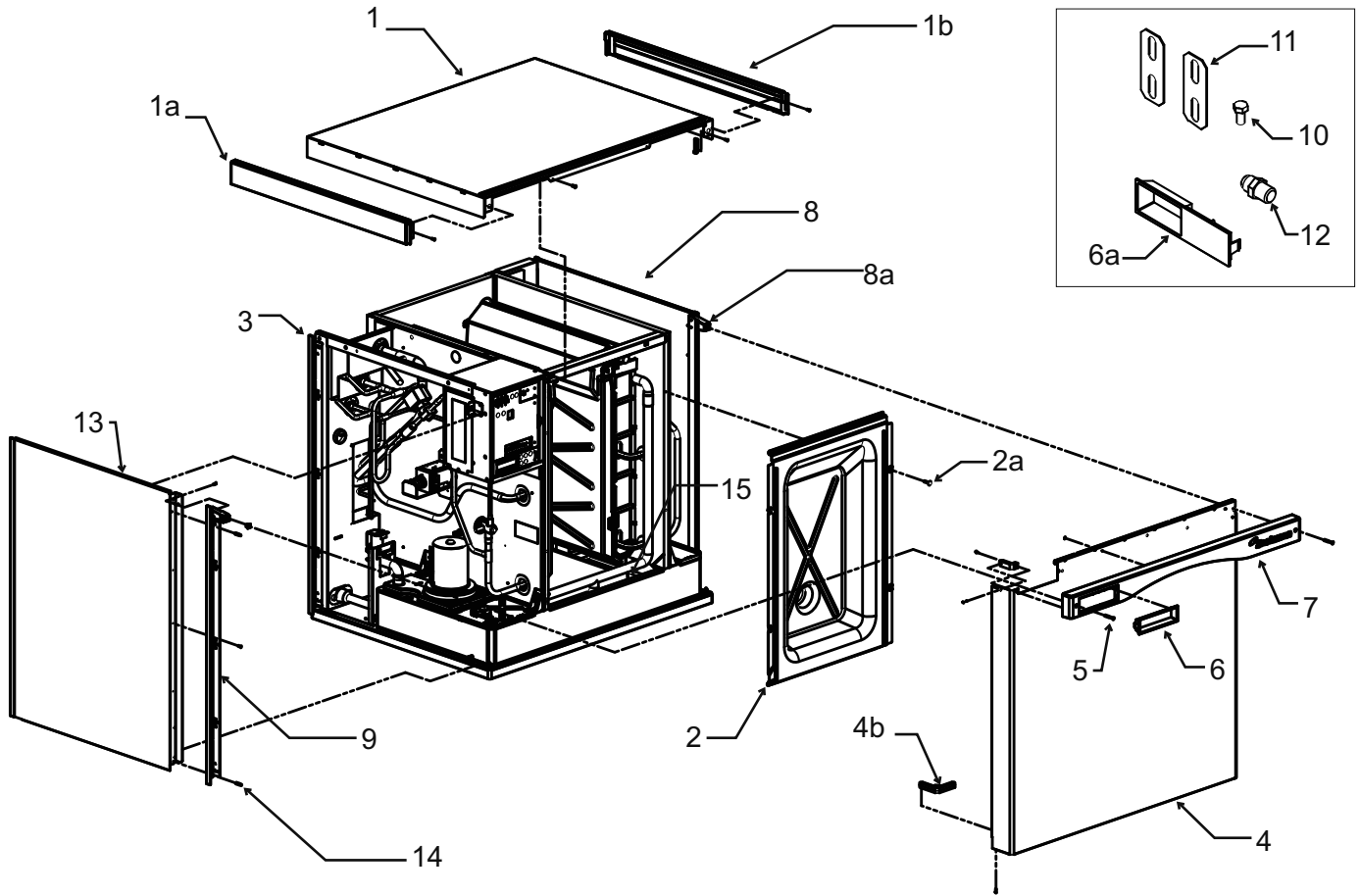
## EH330 Cabinet - B Series



Item Number	Part Number	Description	Item Number	Part Number	Description
1	A39579-022	Top panel	9	A39571-001	Panel clip
1a	02-4221-01	Left trim strip*	10	03-1405-15	Screw
1b	02-4221-02	Right trim strip*	11	A30911-015	Machine straps
2	02-4504-01	Evaporator cover	12	16-0355-00	Inlet water fitting, flare**
2a	03-0727-05	Screw	13	A39580-022	Left side panel
3	03-3804-01	Screw receptacle	14	03-1404-12	Screw
4	A39578-022	Front panel assembly, includes trim strip and labels.	15	13-0943-01	Gasket tape
4a	02-4216-01	Top gusset	* Side trim strips discontinued mid 2011.		
5	03-1735-03	Screw, front panel	** Bezel and fitting discontinued from production 2/8/2012.		
6	02-4284-01	Bezel, full window			
6a	02-4284-02	Bezel, partial window**			
7	02-4214-02	Trim strip			
8	A39581-021	Right side panel assy			
8a	02-4215-01	Receptacle			

# EH330 and EH430 Service Parts

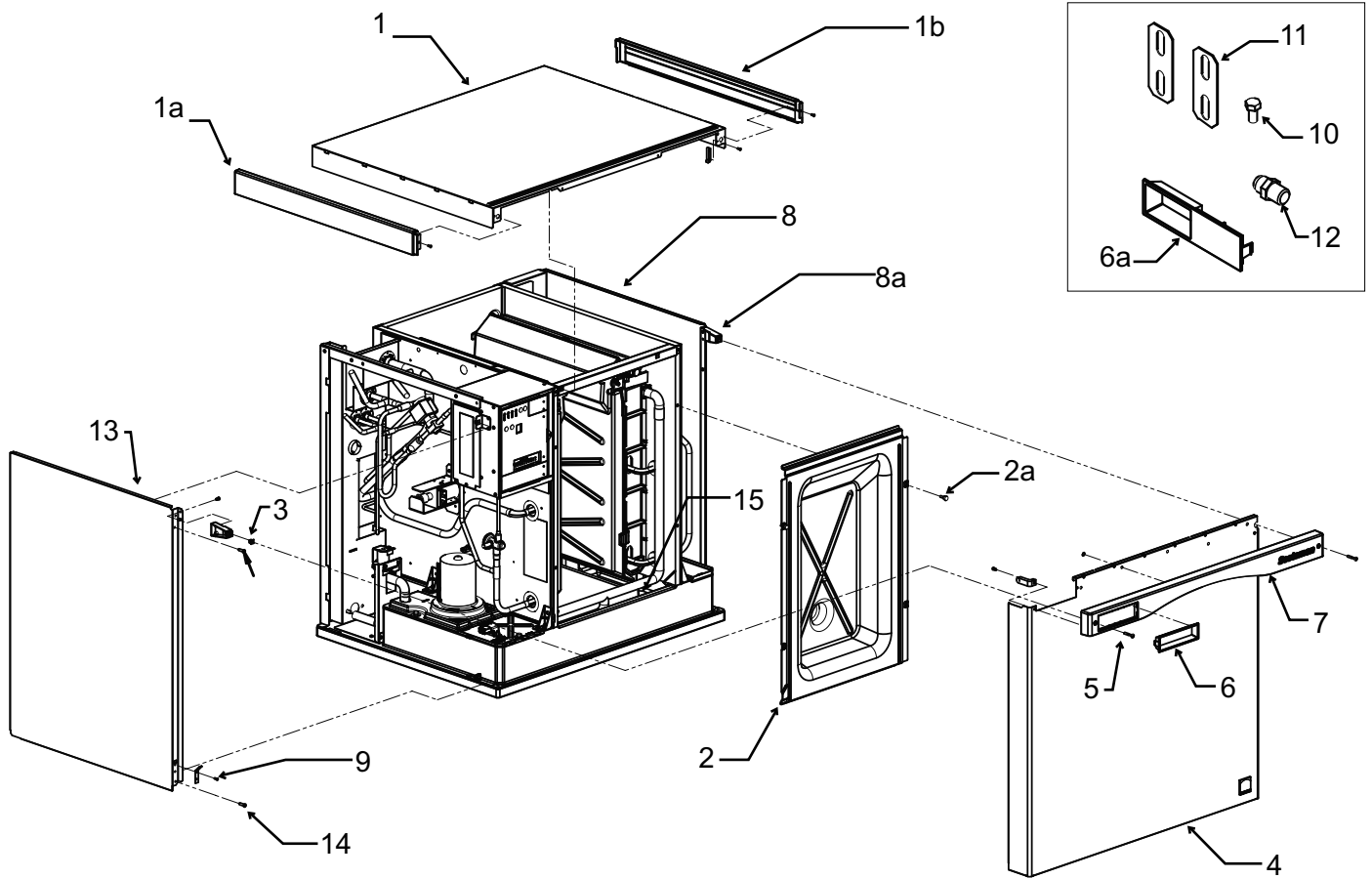
## EH430 Cabinet - A Series



Item Number	Part Number	Description	Part Number	Description
1	A38941-022	Top panel, w/trim strips	8a	02-4215-01 Receptacle
1a	02-4221-01	Left trim strip	9	02-4067-03 Side panel support
1b	02-4221-02	Right trim strip	10	03-1405-15 Screw
2	02-4184-01	Evaporator cover	11	A30911-015 Machine straps
2a	03-0727-05	Screw	12	16-0355-00 Inlet water fitting, flare
3	02-4067-03	Side panel support	13	A38551-024 Left side panel
4	A38552-023	Front panel assembly, includes trim strip, gussets and labels.	14	03-1404-12 Screw
4a	02-4216-01	Top gusset	15	13-0943-01 Gasket tape
4b	02-4217-01	Bottom gusset		
5	03-1735-03	Screw, front panel		
6	02-4284-01	Bezel, full window		
6a	02-4284-02	Bezel, partial window		
7	02-4214-02	Trim strip		
8	A38553-022	Right side panel assy		

# EH330 and EH430 Service Parts

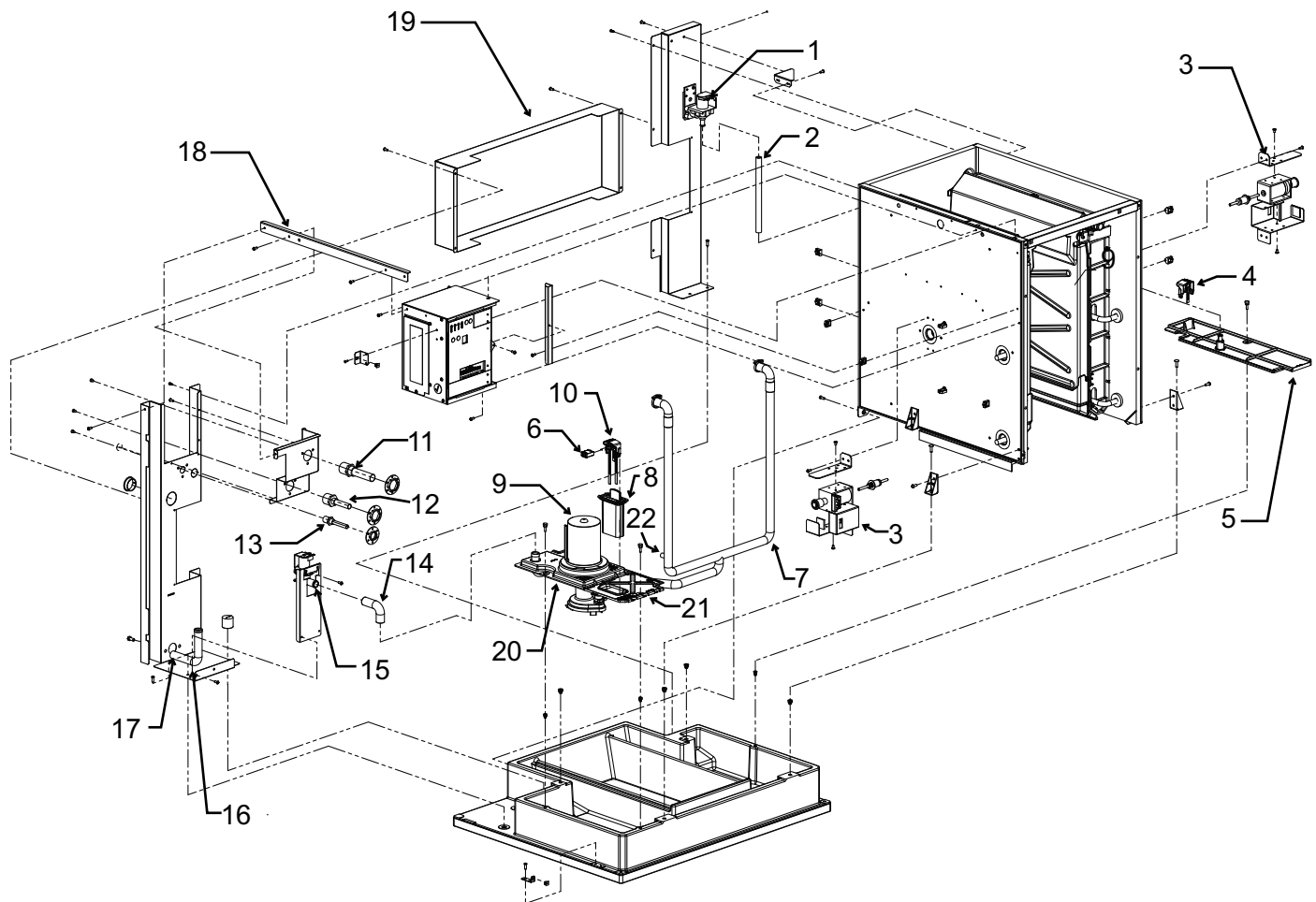
## EH430 Cabinet - B Series



Item Number	Part Number	Description	Item Number	Part Number	Description
1	A39579-022	Top panel, w/trim strips	9	A39571-001	Panel clip
1a	02-4221-01	Left trim strip	10	03-1405-15	Screw
1b	02-4221-02	Right trim strip	11	A30911-015	Machine straps
2	02-4504-01	Evaporator cover	12	16-0355-00	Inlet water fitting, flare
2a	03-0727-05	Screw	13	A39580-024	Left side panel
3	03-3804-01	Screw receptacle	14	03-1404-12	Screw
4	A39578-023	Front panel assembly, includes trim strip and labels.	15	13-0943-01	Gasket
4a	02-4216-01	Top gusset			
5	03-1735-03	Screw, front panel			
6	02-4284-01	Bezel, full window			
6a	02-4284-02	Bezel, partial window			
7	02-4214-02	Trim strip			
8	A39581-022	Right side panel assy			
8a	02-4215-01	Receptacle			

# EH330 and EH430 Service Parts

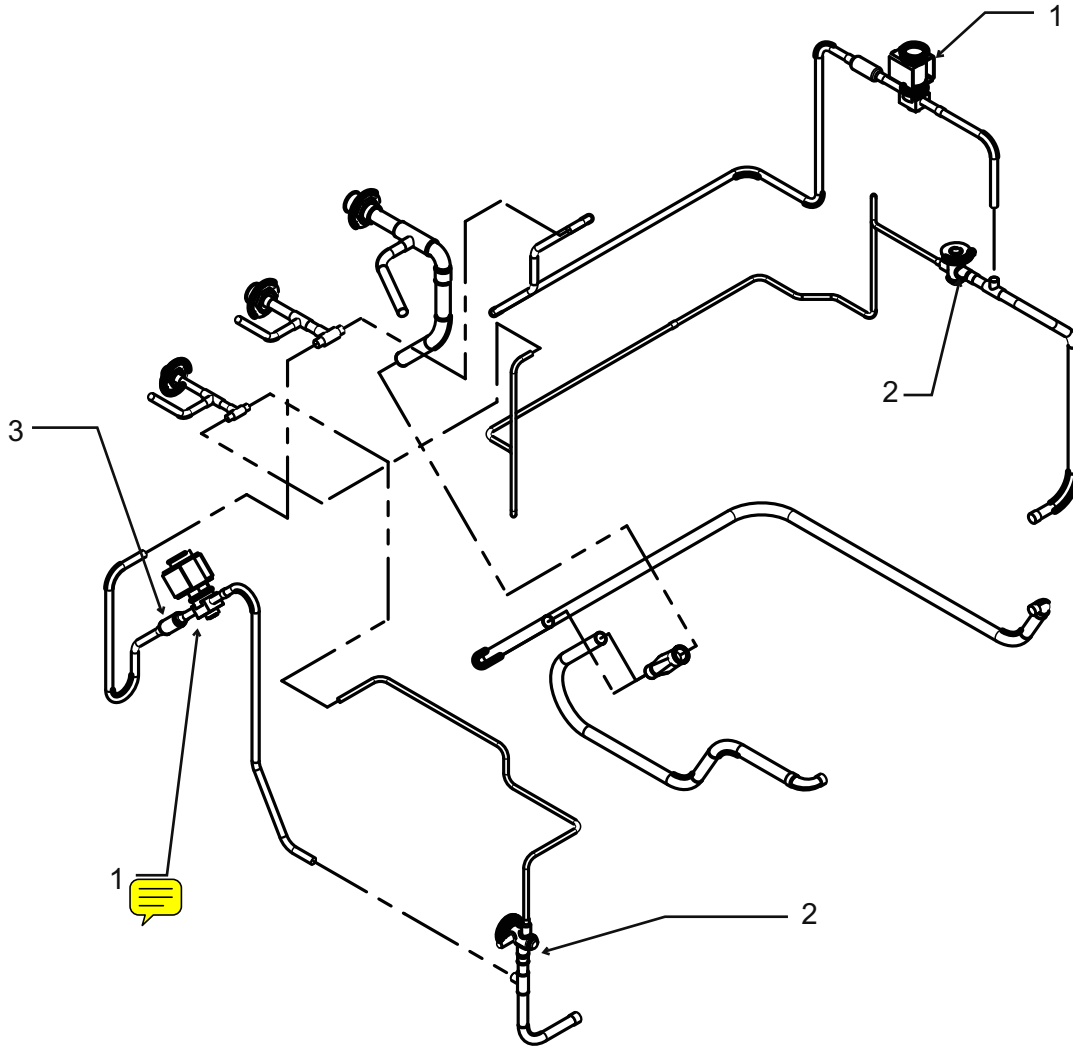
## EH330 and EH430 Interior Parts



Item Number	Part Number	Description
1	12-2922-01	Inlet water sol valve
2	13-0674-02	Tubing, order 2 (ft)
3	12-3060-21	Harvest assist
4	A39030-022	Level sensor, discontinued
5	02-4175-01	Sump cover, rt
6	12-2928-01	WLS harness, no wire to item 4
7	02-4182-01	Water pump hose, EH430
	02-4505-01	Water pump hose, EH330
8	02-4332-01	WLS cover, prior fits 21
8a	02-4646-01	Probe guard, fits 21a
9	12-2920-21	Water pump
10	A39030-021	Water level sensor
11	16-0850-04	Suction line fitting
12	16-0850-01	Vapor line fitting
13	16-0850-03	Liquid line fitting
14	A38863-001	Tube
15	11-0564-01	Purge valve
16	A38863-002	Tube, out
17	02-3692-21	Drain fitting
18	A38804-001	Brace
19	A38796-001	Chase
20	02-4177-01	Pump bracket
21	02-4178-01	Sump cover, prior, fits 8
21a	02-4649-01	Sump cover, fits 8a
22	11-0572-21	Temp sensor set

# EH330 and EH430 Service Parts

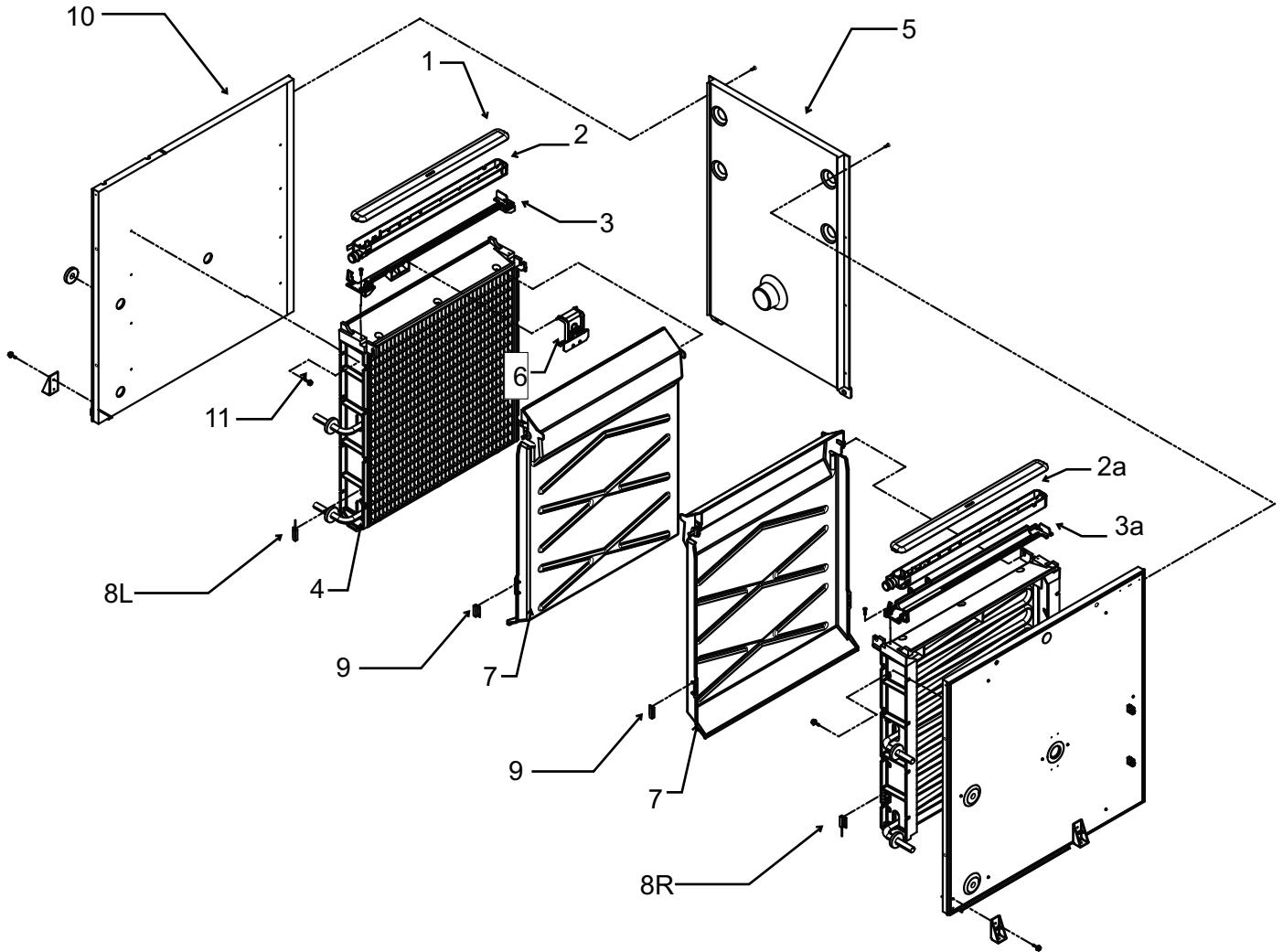
## EH330 and EH430 Refrigeration System



Item Number	Part Number	Description
1	11-0493-03	Vapor valve
2	16-1130-01	TXV - EH430
	16-1142-01	TXV - EH330
	02-4045-01	Insulation for TXV
3	16-1063-01	Strainer

# EH330 and EH430 Service Parts

## EH330 Evaporator Compartment



Item Number	Part Number	Description	8L	11-0563-06	Curtain switch, left
1	02-4065-01	Water distributor cover	8R	11-0563-03	Curtain switch, right
2	02-4064-01	Water distributor, left	9	11-0563-02	Curtain switch magnet
2a	02-4064-02	Water distributor, right	10	13-0943-01	Gasket tape
3	02-4205-01	Mounting bracket, left	11	03-3868-01	Screw
3a	02-4205-02	Mounting bracket, right	Note: Item 7 includes item 9, shipped loose.		
4	see table	Evaporator			

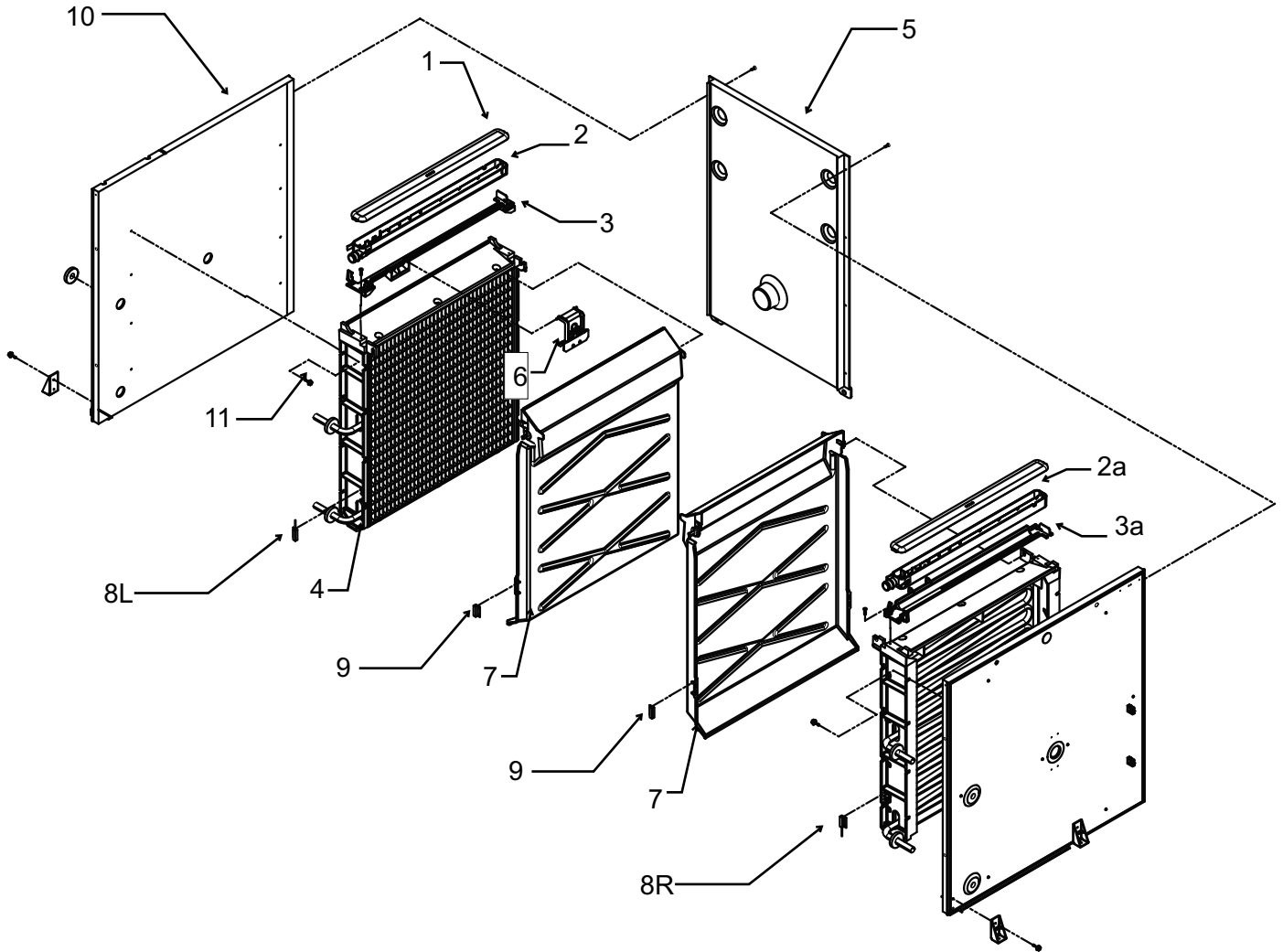
	small cube	medium cube
Right	A38627-023	A38627-024
Left	A38627-021	A38627-022

5	A39480-001	Back wall
6	A39031-021	Ice thickness sensor
7	02-4100-32	Curtain



# EH330 and EH430 Service Parts

## EH430 Evaporator Compartment



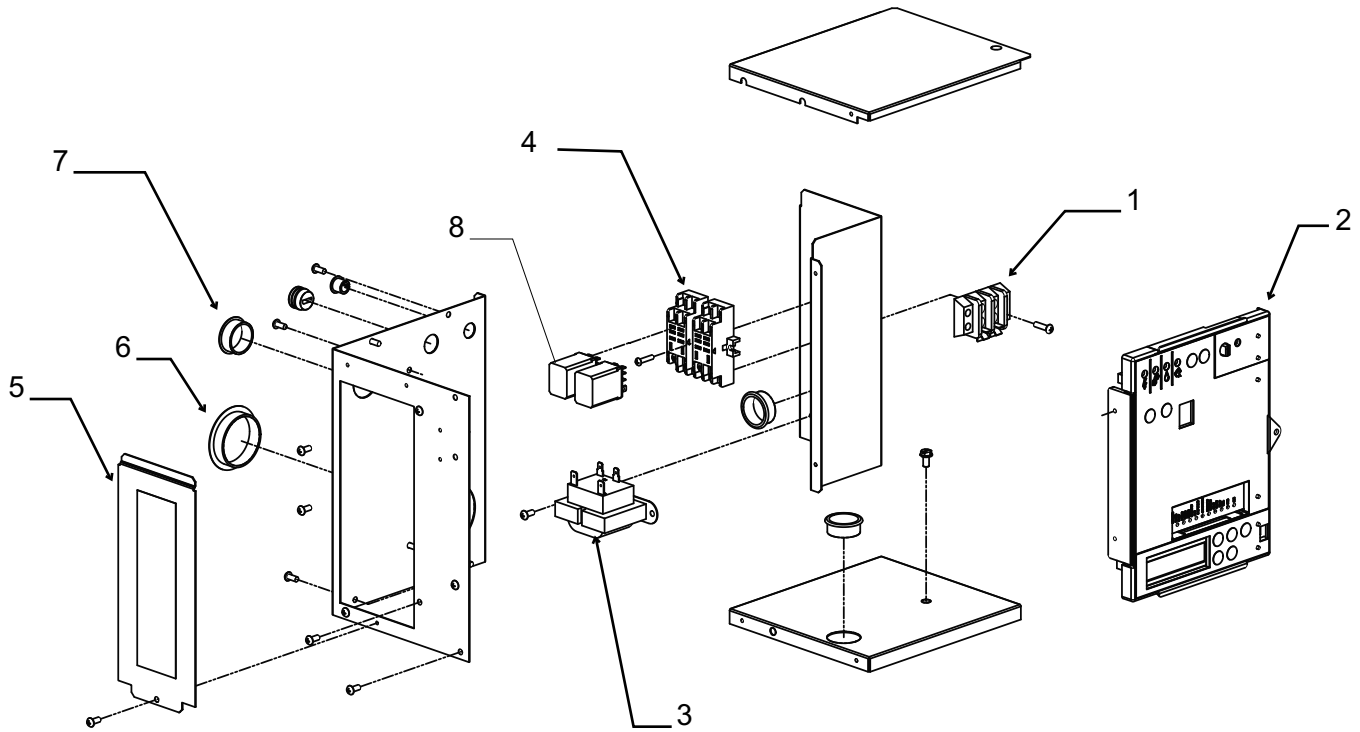
Item Number	Part Number	Description	Item Number	Part Number	Description
1	02-4065-01	Water distributor cover	8L	11-0563-06	Curtain switch, left
2	02-4064-01	Water distributor, left	8R	11-0563-03	Curtain switch, right
2a	02-4064-02	Water distributor, right	9	11-0563-02	Curtain switch magnet
3	02-4205-01	Mounting bracket, left	10	13-0943-01	Gasket tape
3a	02-4205-02	Mounting bracket, right	11	03-3868-01	Screw
4	see table	Evaporator	Note: Item 7 includes item 9, shipped loose.		

	small cube	medium cube
Right	A38628-023	A38628-024
Left	A38628-021	A38628-022

5	A38677-001	Back wall
6	A39031-021	Ice thickness sensor
7	02-4611-21	Curtain

# EH330 and EH430 Service Parts

## EH330 or EH430 Electrical



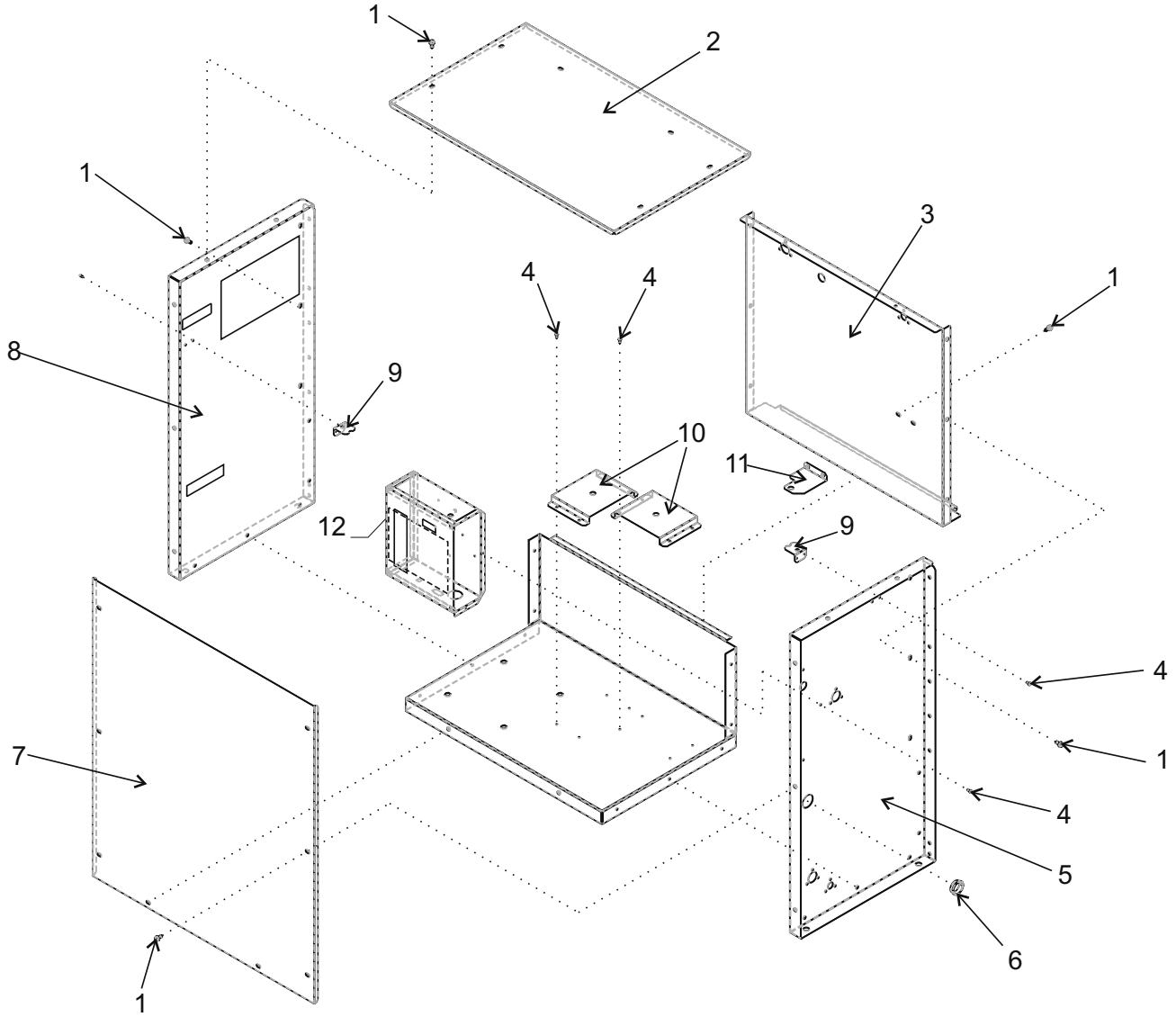
Item Number	Part Number	Description
1	12-2780-01	Terminal strip
2	11-0550-28	Controller
3	12-2924-01	Transformer
4	12-2949-02	Relay base
5	A39287-001	Cover
6	12-1213-15	Snap bushing
7	12-1213-11	Snap bushing
8	12-2949-01	Relay

**Not Illustrated:**

9	12-2954-01	Low voltage harness - to interconnecting wire
10	12-2943-01	High voltage harness (has large plug)
11	12-2940-01	Control power harness
12	12-1638-19	Power cord

# EH330 and EH430 Service Parts

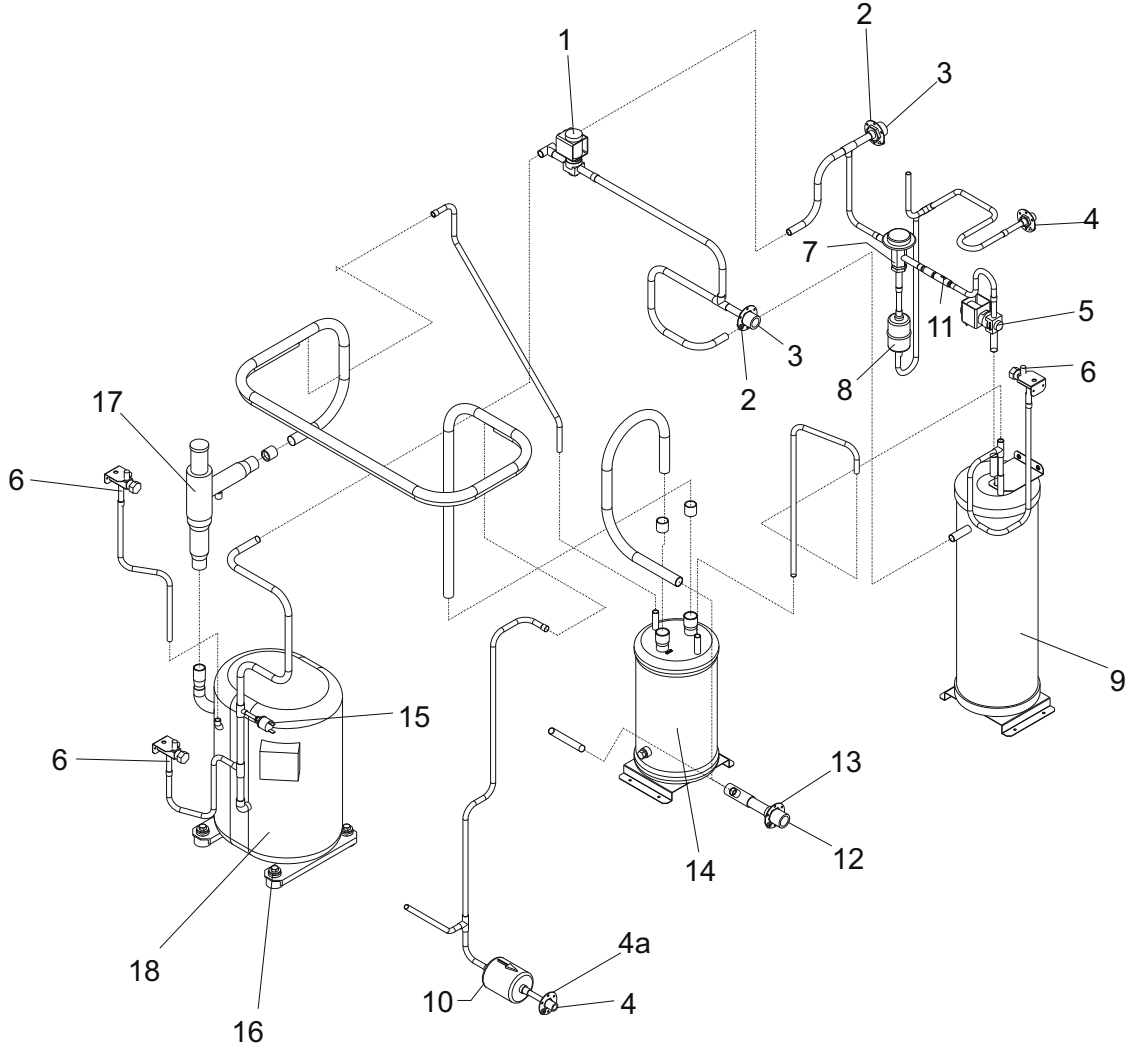
## CP Cabinet



Item Number	Part Number	Description	Item Number	Part Number	Description
1	03-1645-01	Screw	10	A37948-001	Rec btm bracket - all or accumulator bracket - C1200CP or C1410CP
2	A37853-001	Top cover		A39319-001	Accumulator bracket, C1800CP or C2000CP
3	A37845-001	Back panel	11	A37949-001	Receiver top bracket
4	03-1531-01	Screw	12	A38430-001	Control box cover
5	A37829-001	Right side panel			
6	12-1213-20	Snap bushing			
7	A37896-001	Front cover			
8	A37829-002	Left side panel			
9	A37962-001	Service valve bracket			

# EH330 and EH430 Service Parts

## C1200CP Refrigeration System



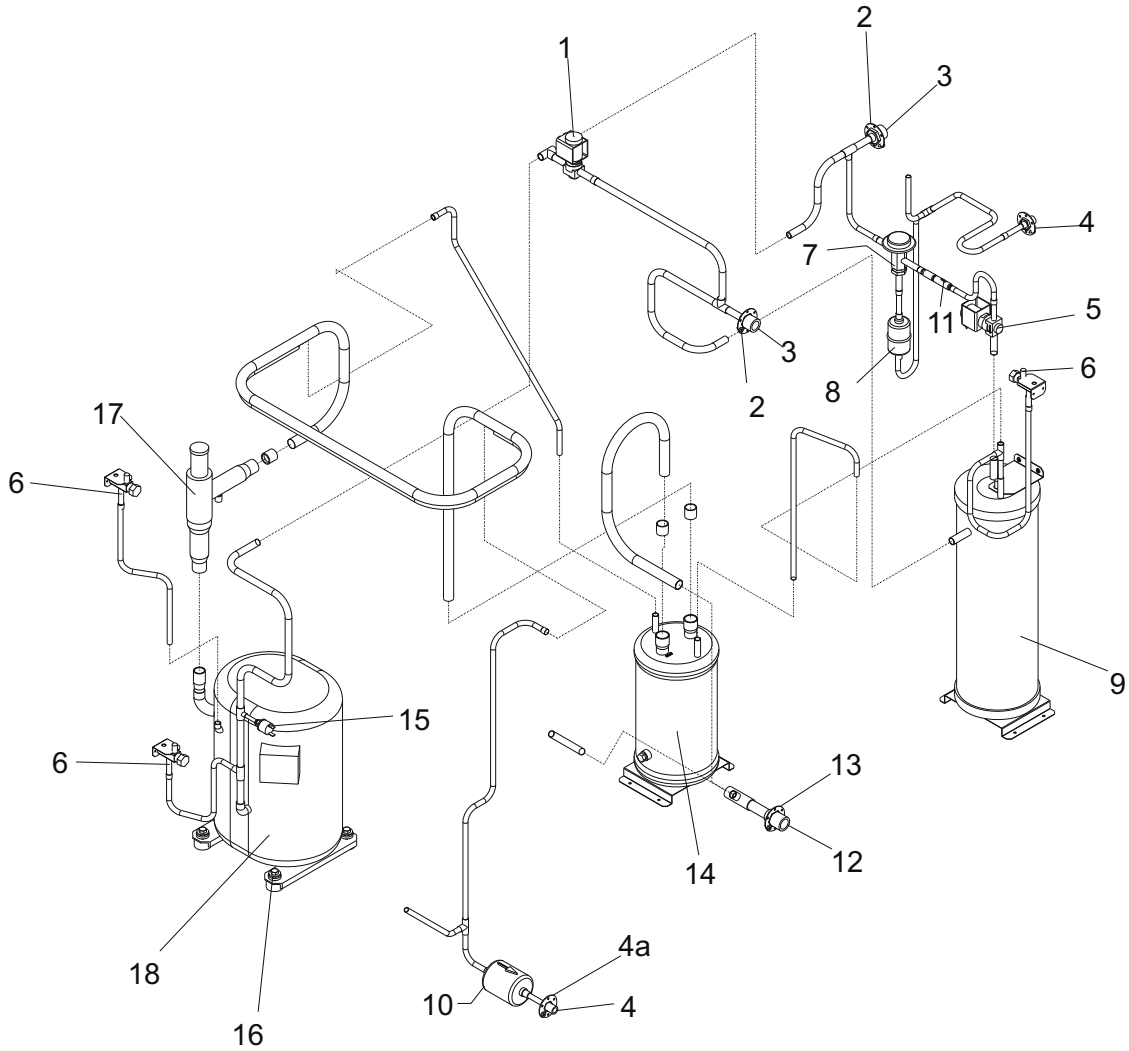
Item Number	Part Number	Description
1	11-0507-03	By pass valve
2	16-0701-14	Mounting flange
3	16-0850-01	Discharge quick connect
4	16-0850-03	Liquid quick connect
4a	16-0701-07	Mounting flange
5	11-0546-01	Liquid inlet valve
6	16-0832-20	Access valve
7	11-0422-22	Headmaster
8	02-3231-02	Filter
9	16-1085-01	Receiver
10	02-3319-02	Filter drier
11	16-1029-01	Check valve
12	16-0850-04	Suction quick connect
13	16-0701-18	Mounting flange
14	16-0801-22	Accumulator
15	11-0501-22	Hi pressure cut out
16	18-2300-27	Mounting grommet
	18-2300-26	Sleeve
	03-1406-07	Washer
	03-1404-15	Cap screw
17	16-1096-22	CPR valve
18	Compressors	

C1200CP-32	single phase	18-8750-22
C1200CP-2	three phase	18-8750-24

All compressors are 208-230 volt, 60 Hz.  
 Single phase compressors include starting components. All include a drier and crankcase heaters.

# EH330 and EH430 Service Parts

## C1410CP Refrigeration Systems

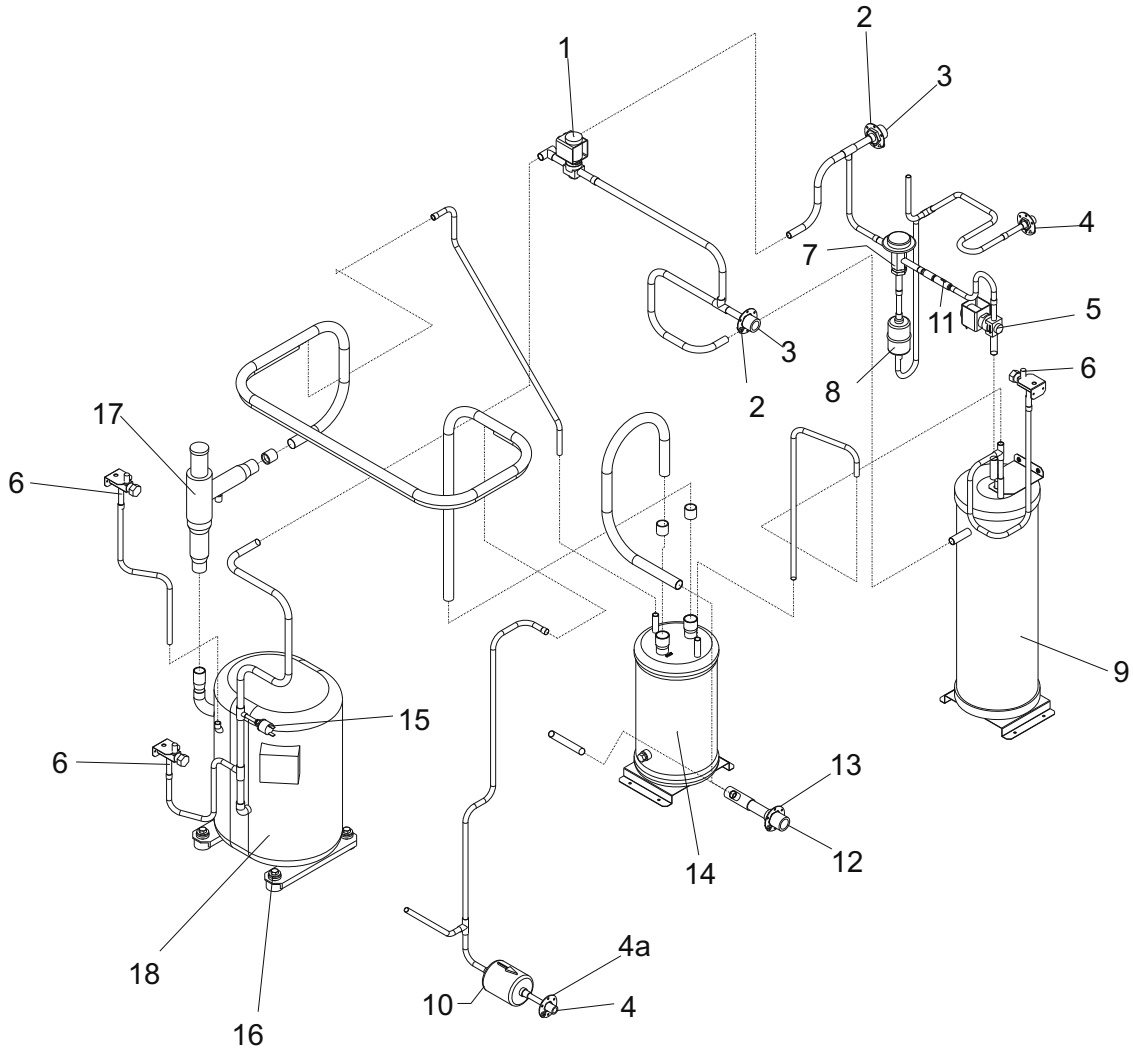


Item Number	Part Number	Description
1	11-0507-03	By pass valve
2	16-0701-14	Mounting flange
3	16-0850-01	Discharge quick connect
4	16-0850-03	Liquid quick connect
4a	16-0701-07	Mounting flange
5	11-0546-01	Liquid inlet valve
6	16-0832-20	Access valve
7	11-0422-22	Headmaster
8	02-3231-02	Filter
9	16-1085-01	Receiver
10	02-3319-02	Filter drier
11	16-1029-01	Check valve
12	16-0850-04	Suction quick connect
13	16-0701-18	Mounting flange
14	16-0801-22	Accumulator
15	11-0501-22	Hi pressure cut out
16	18-2300-27	Mounting grommet
	18-2300-26	Sleeve
	03-1406-07	Washer
	03-1404-15	Cap screw
17	16-1096-22	CPR valve
18	Compressors	
	C1410CP-32	single phase 18-8749-22
	C1410CP-2	three phase 18-8749-24

All compressors are 208-230 volt, 60 Hz.  
 Single phase compressors include starting components. All include a drier and crankcase heaters.

# EH330 and EH430 Service Parts

## C1800CP Refrigeration System

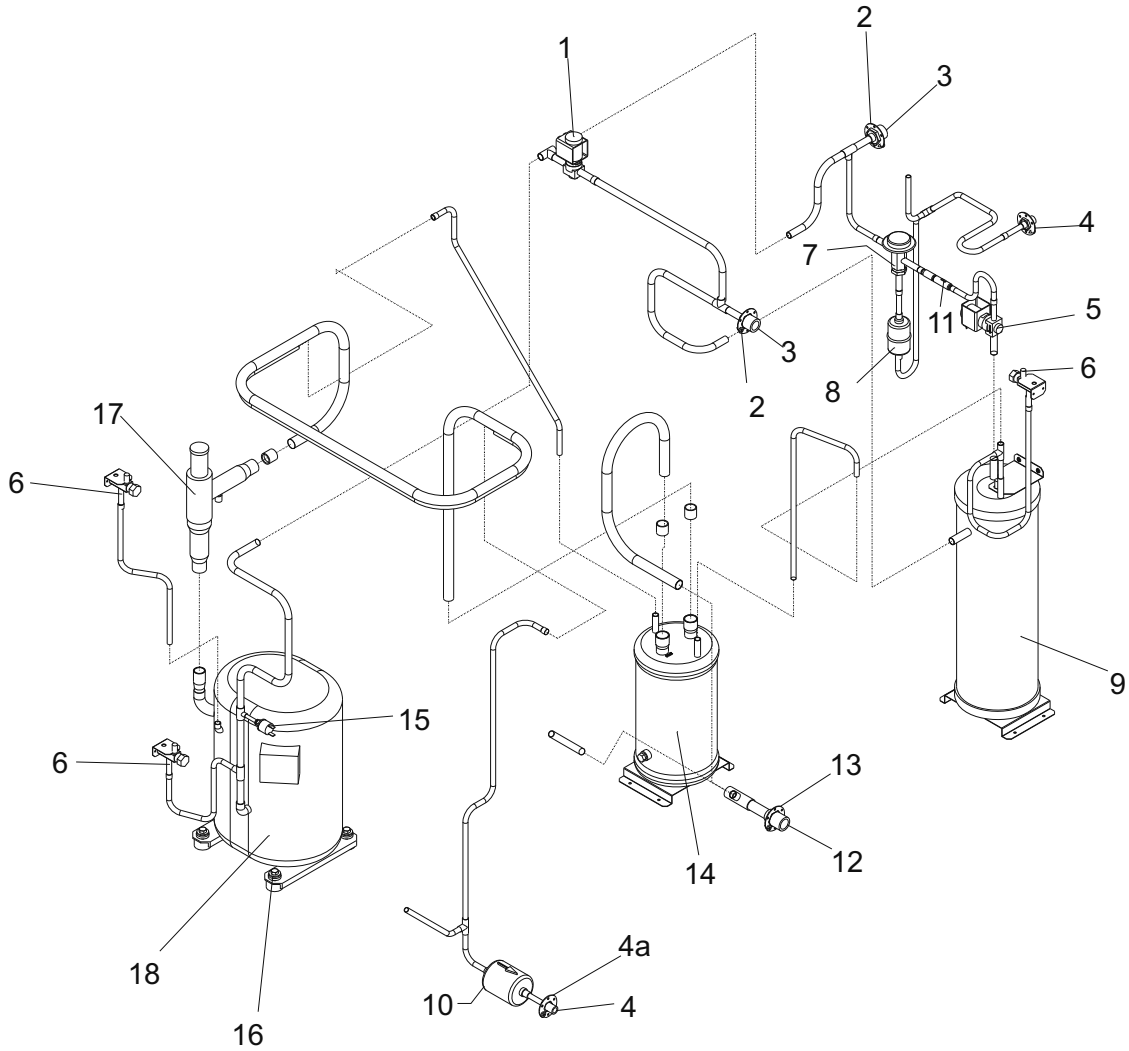


Item Number	Part Number	Description
1	11-0507-03	By pass valve
2	16-0701-14	Mounting flange
3	16-0850-01	Discharge quick connect
4	16-0850-03	Liquid quick connect
4a	16-0701-07	Mounting flange
5	11-0546-01	Liquid inlet valve
6	16-0832-20	Access valve
7	11-0422-22	Headmaster
8	02-3231-02	Filter
9	16-1085-01	Receiver
10	02-3319-02	Filter drier
11	16-1029-01	Check valve
12	16-0850-04	Suction quick connect
13	16-0701-18	Mounting flange
14	16-1122-21	Accumulator
15	11-0501-22	Hi pressure cut out
16	18-2300-27	Mounting grommet
	18-2300-26	Sleeve
	03-1406-07	Washer
	03-1404-15	Cap screw
17	16-1096-22	CPR valve
18	Compressors	
	C1800CP-32	single phase 18-8930-24
	C1800CP-2	three phase 18-8930-25

All compressors are 208-230 volt, 60 Hz.  
Single phase compressors include starting components. All include a drier and crankcase heaters.

# EH330 and EH430 Service Parts

## C2000CP Refrigeration System



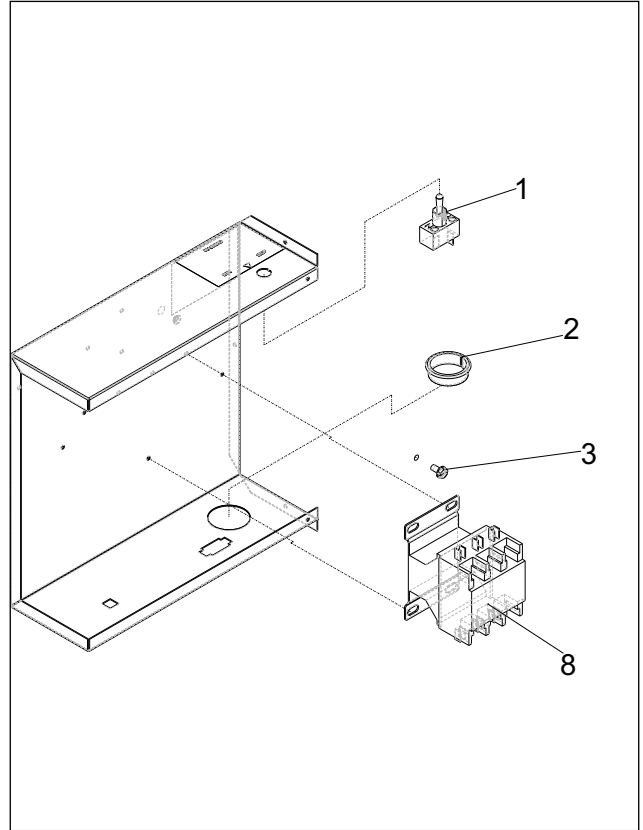
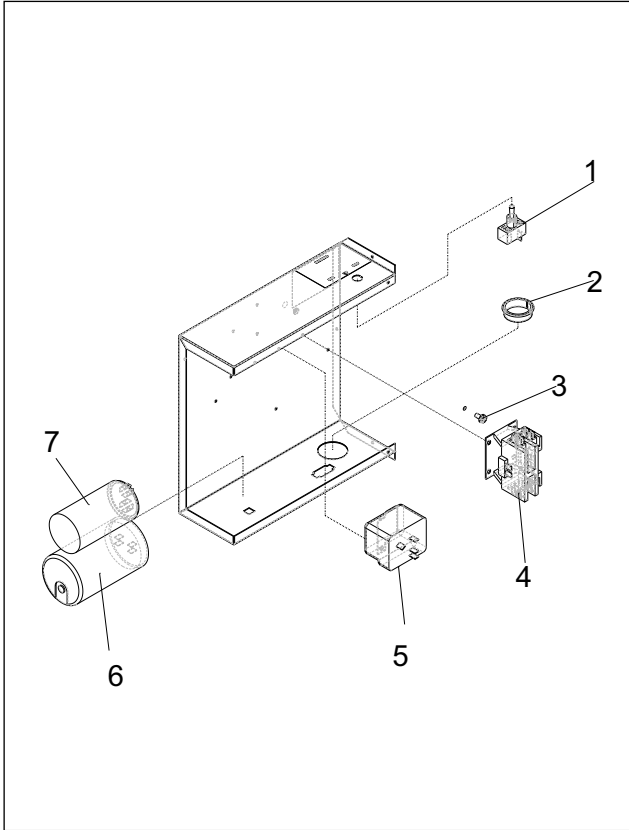
Item Number	Part Number	Description
1	11-0507-03	By pass valve
2	16-0701-14	Mounting flange
3	16-0850-01	Discharge quick connect
4	16-0850-03	Liquid quick connect
4a	16-0701-07	Mounting flange
5	11-0546-01	Liquid inlet valve
6	16-0832-20	Access valve
7	11-0422-22	Headmaster
8	02-3231-02	Filter
9	16-1085-01	Receiver
10	02-3319-02	Filter drier
11	16-1029-01	Check valve
12	16-0850-04	Suction quick connect
13	16-0701-18	Mounting flange
14	16-1122-21	Accumulator
15	11-0501-22	Hi pressure cut out
16	18-2300-27	Mounting grommet
	18-2300-26	Sleeve
	03-1406-07	Washer
	03-1404-15	Cap screw
17	16-1096-22	CPR valve
18	Compressors	
	C2000CP-32	single phase 18-8923-22
	C2000CP-2	three phase 18-8923-23

All compressors are 208-230 volt, 60 Hz.

Single phase compressors include starting components. All include a drier and crankcase heaters.

# EH330 and EH430 Service Parts

## CP Control Box



Item Number	Part Number	Description
1	12-2637-01	Toggle switch
2	12-1213-20	Snap bushing
3	03-1531-01	Mounting screw
4	12-2469-01	Single phase contactor

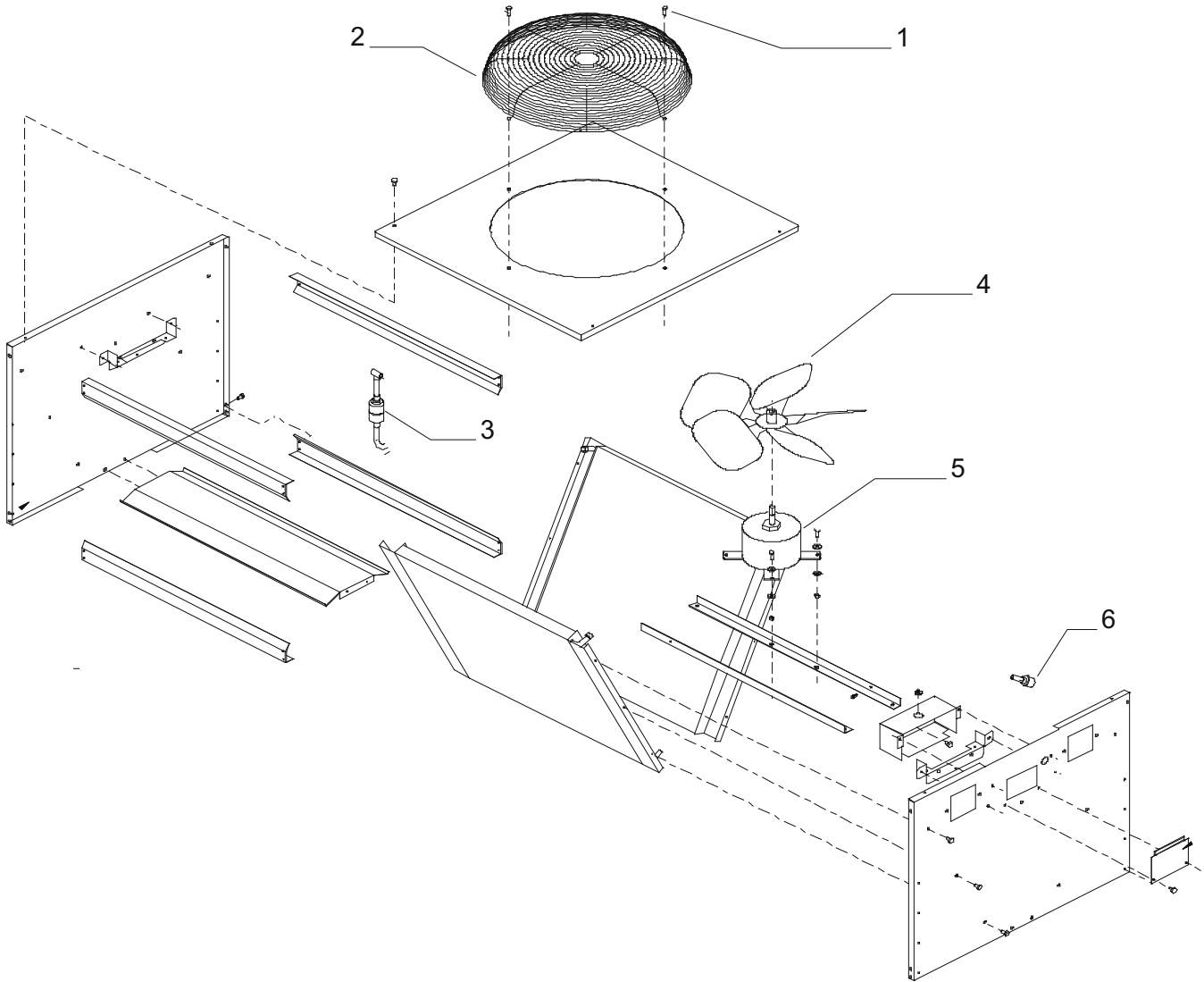
		C1200CP-32	C1410CP-32	C1800CP-32	C2000CP-32
5	Potential Relay	18-1903-46	18-1903-46	18-1903-62	18-1903-62
6	Start Capacitor	18-1901-48	18-1901-48	18-1901-27	18-1901-27
7	Run Capacitor	18-1902-70	18-1902-70	18-1902-27	18-1902-27

8	12-2533-01	Three phase Contactor
Not Shown:		
9	12-2836-02	Transformer, 230 to 24



# EH330 and EH430 Service Parts

## Remote Condensers



### Model ERC1086

Item Number	Part Number	Description
1	03-1405-08	Screw
2	02-3575-01	Fan guard
3	02-3231-03	Filter
4	18-8816-01	Fan blade
5	12-2651-01	Fan motor
6	16-1057-04	Quick connect, disch
	16-1057-03	Quick connect, liquid

Not Shown:

A37169-001	Leg
A37170-001	Leg brace
03-1645-01	Screw for legs

### ERC2086

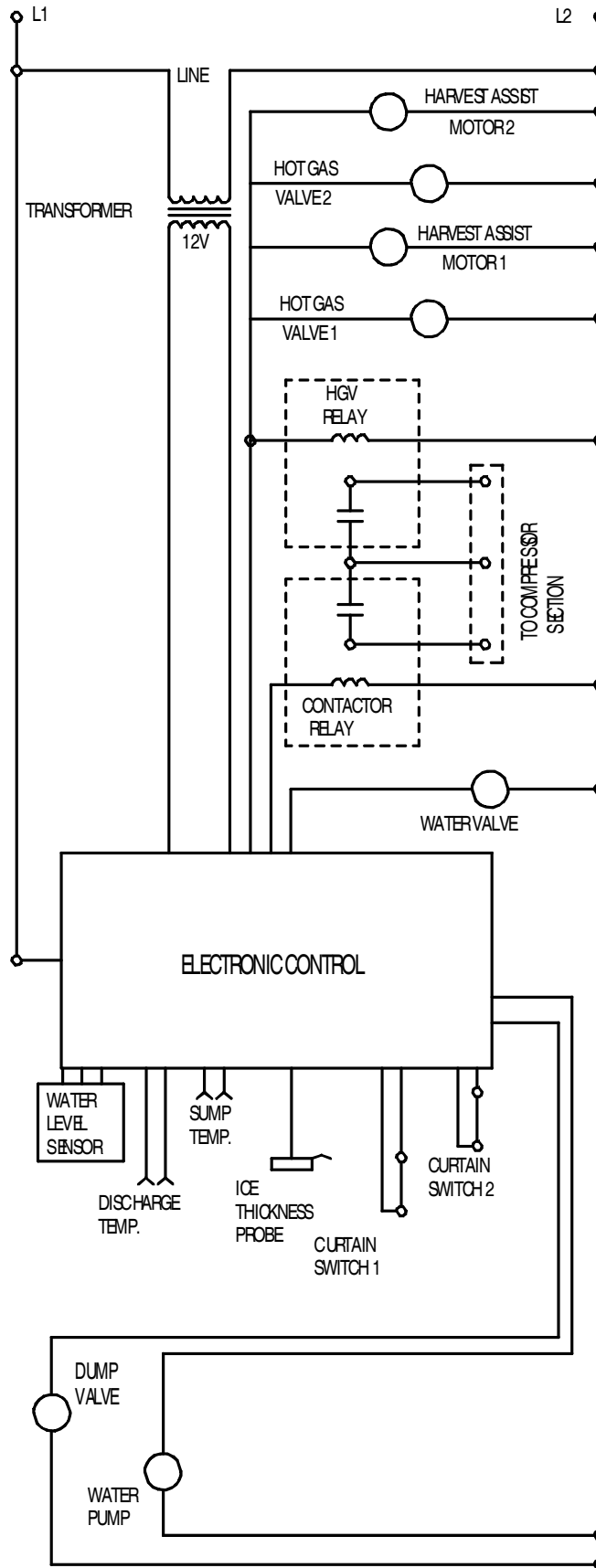
Item Number	Part Number	Description
1	03-1405-08	Screw
2	02-3770-01	Fan guard
3	02-3231-03	Filter
4	18-8820-01	Fan blade
5	12-2717-01	Fan motor
6	16-1057-04	Quick connect, disch
	16-1057-03	Quick connect, liquid

Not Shown:

A37169-001	Leg
A37296-001	Leg brace
03-1645-01	Screw for legs

# EH330 and EH430 Wiring Diagrams

## EH330 or EH430 Schematic Diagram

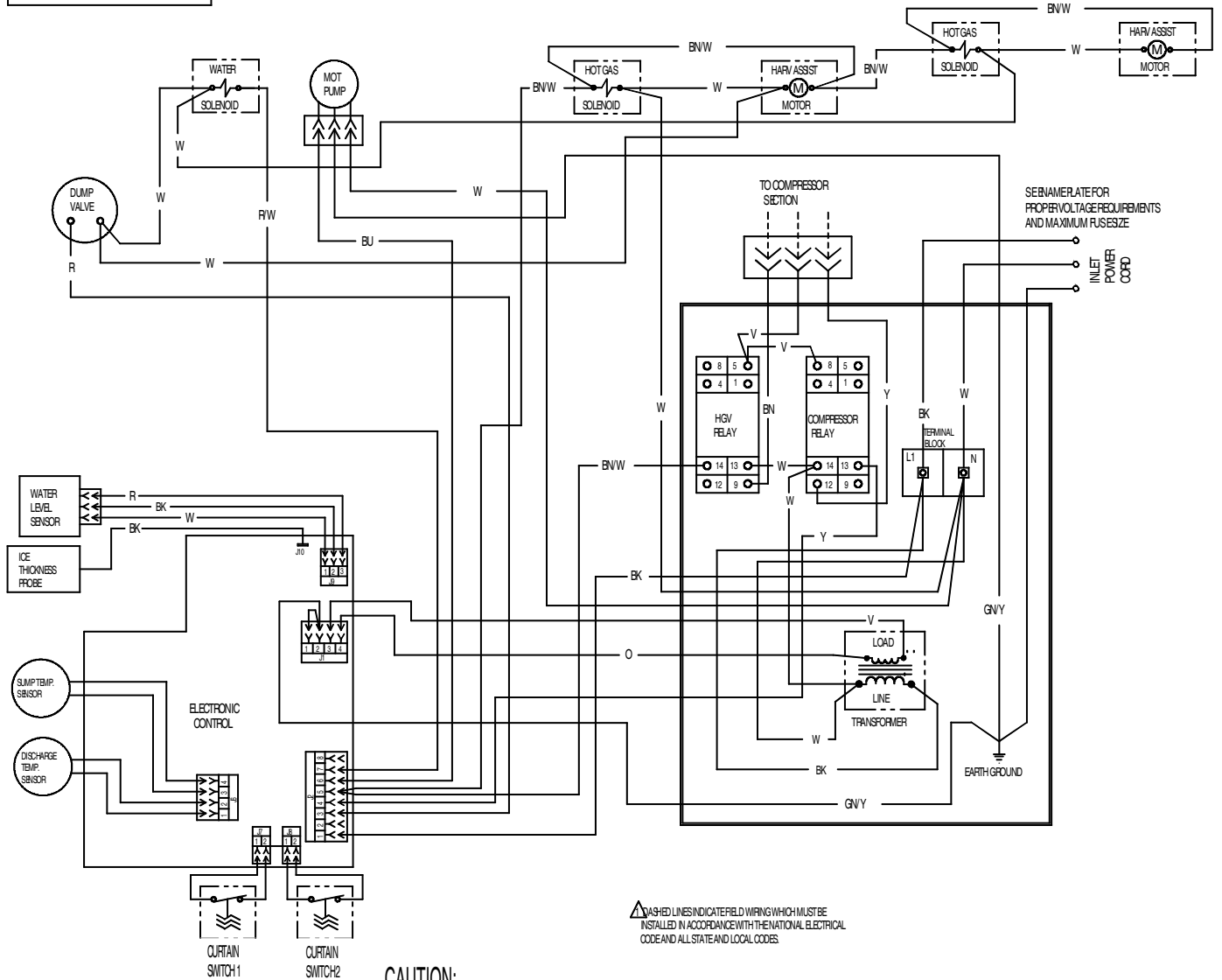


# EH330 and EH430 Wiring Diagrams

## EH330 or EH430 Wiring Diagram

17-3406-01

USE COPPER CONDUCTOR ONLY

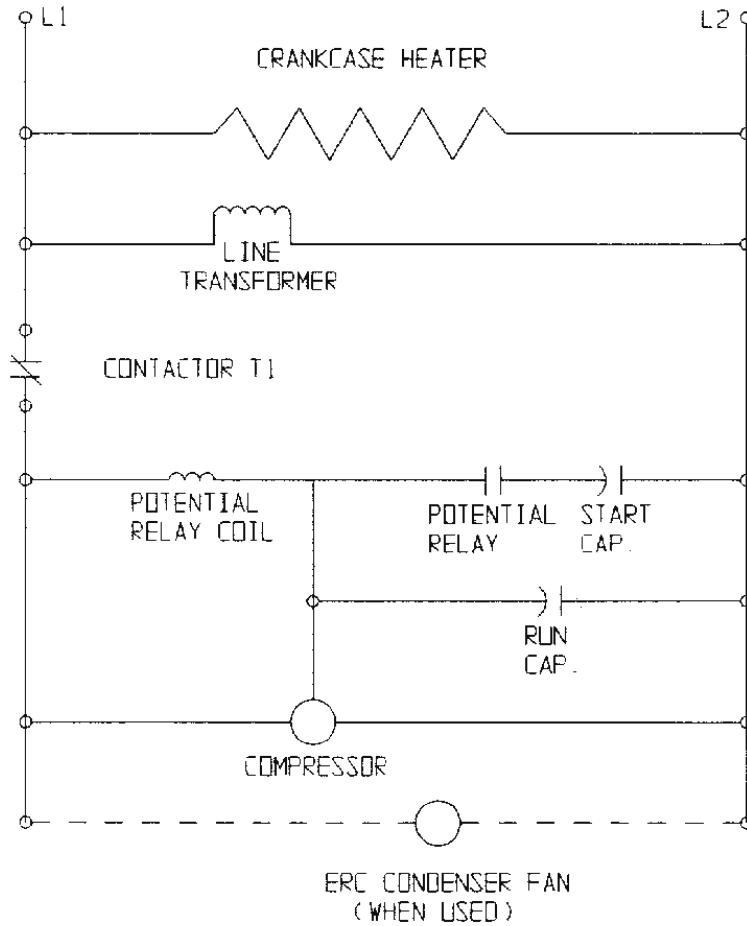
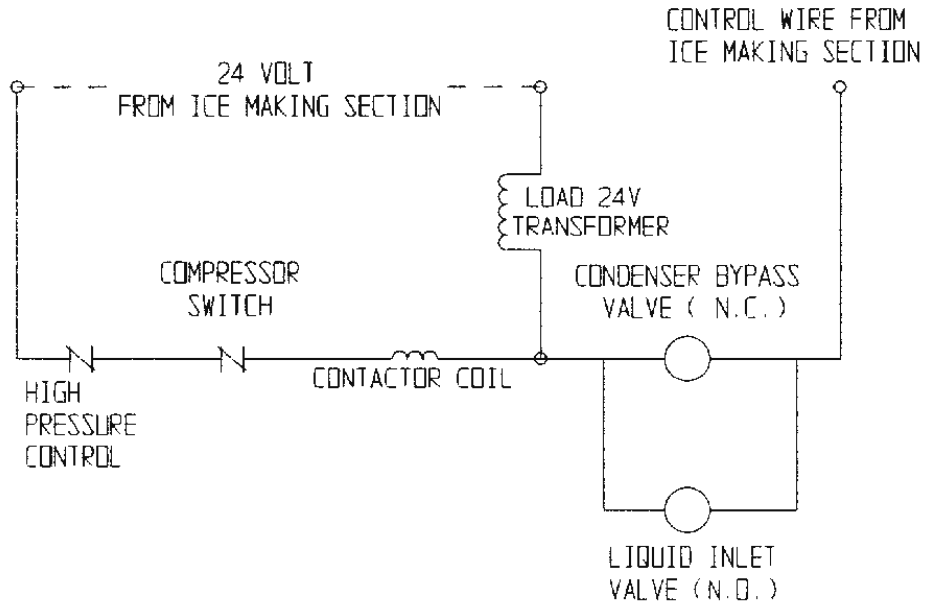


THIS UNIT MUST BE GROUNDED.

**CAUTION:** MORE THAN ONE DISCONNECT MEANS MAY BE REQUIRED TO DISCONNECT ALL POWER TO THIS UNIT.

# EH330 and EH430 Wiring Diagrams

## CP Single Phase Schematic Diagram

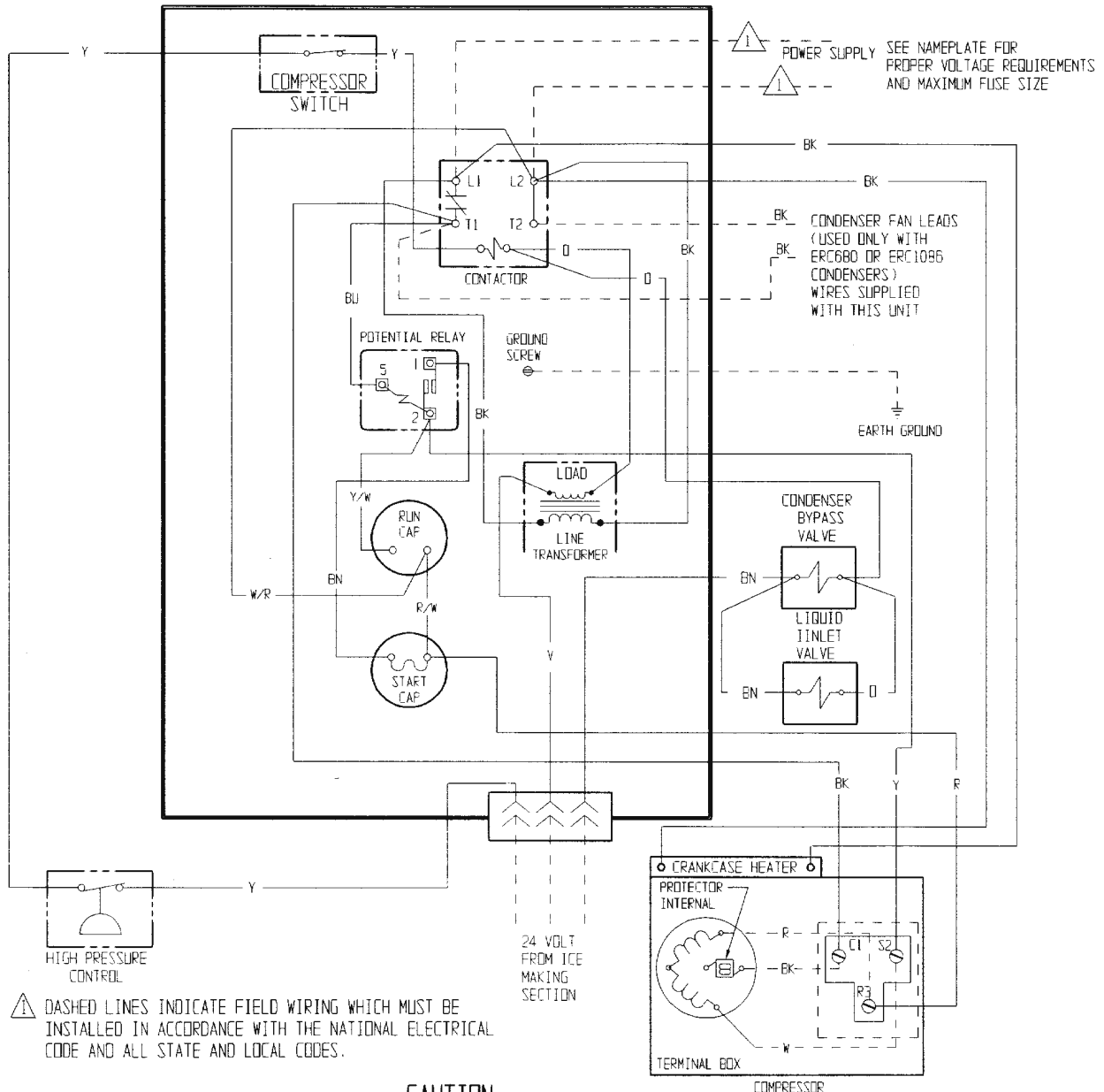


# EH330 and EH430 Wiring Diagrams

## CP Single Phase Wiring Diagram

17-3130-01

USE COPPER CONDUCTORS ONLY

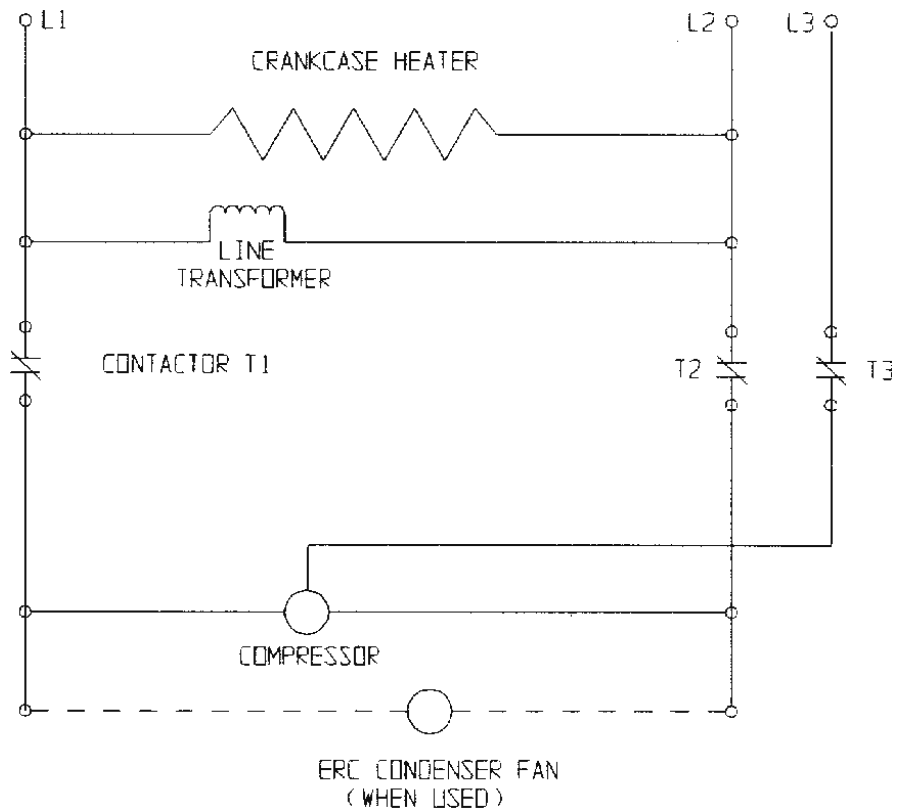
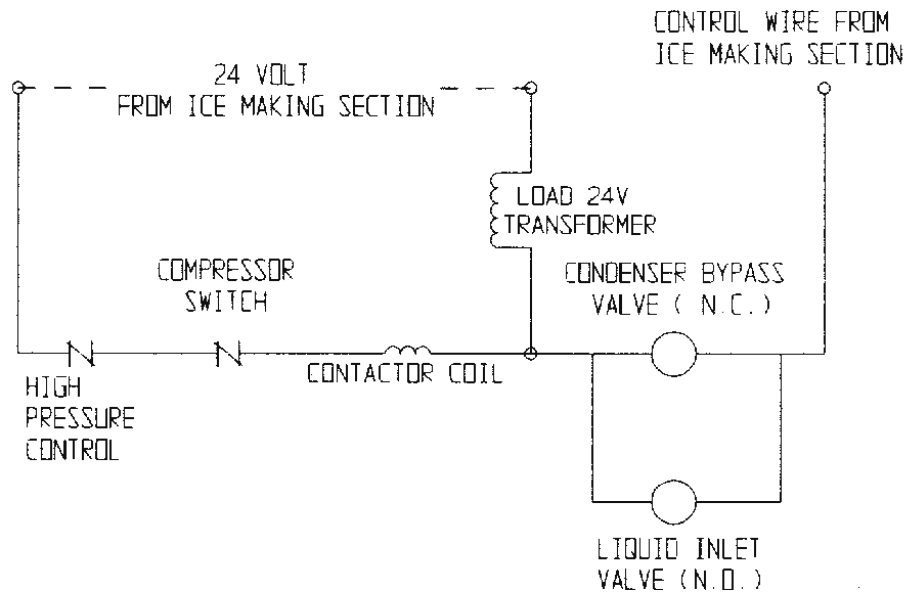


THIS UNIT MUST BE GROUNDING.

**CAUTION:**  
MORE THAN ONE DISCONNECT MEANS MAY BE REQUIRED TO DISCONNECT ALL POWER TO THIS UNIT.

# EH330 and EH430 Wiring Diagrams

## CP Three Phase Wiring Diagram

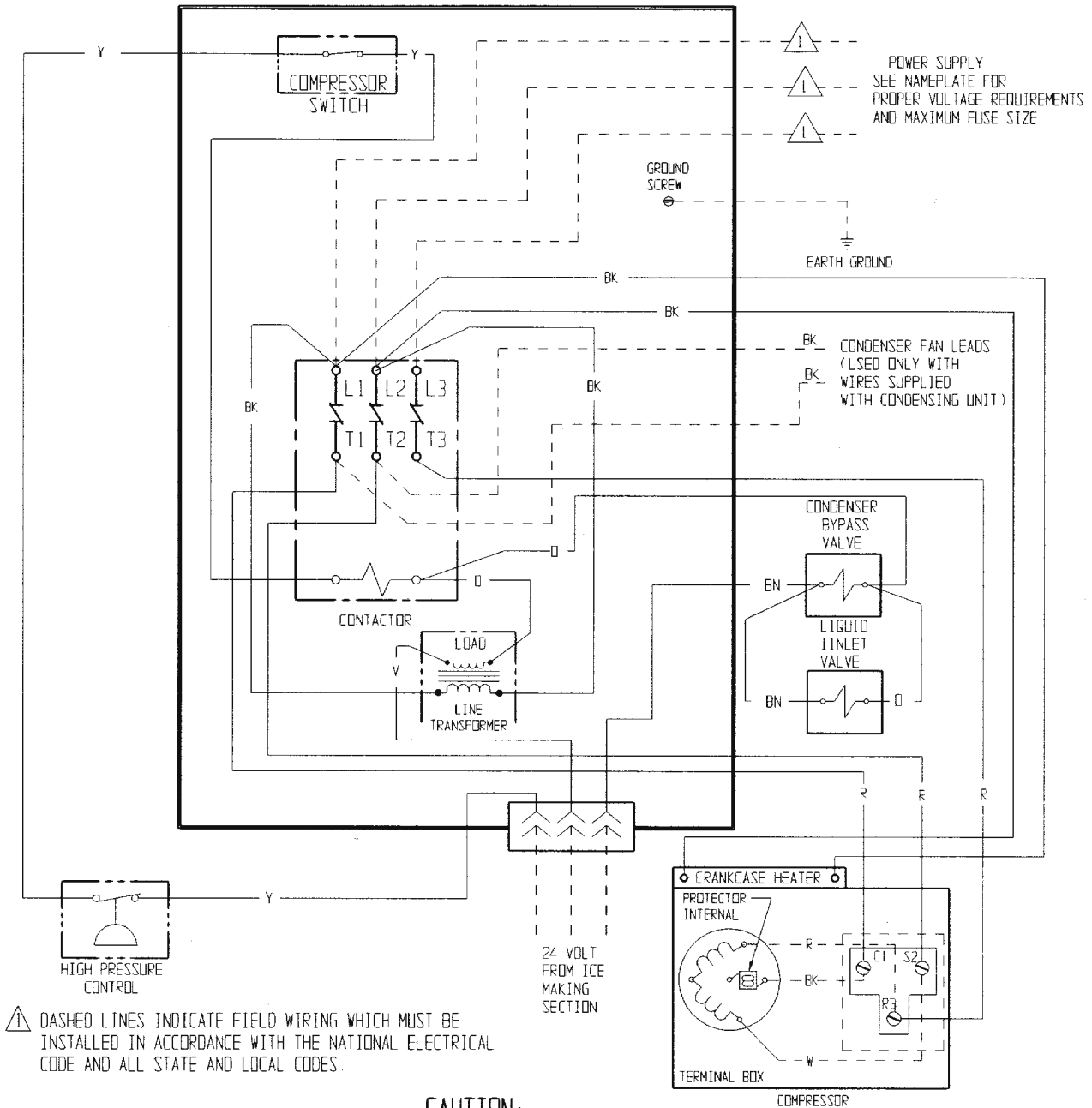


# EH330 and EH430 Wiring Diagrams

## CP Three Phase Schematic Diagram

17-3131-01

USE COPPER CONDUCTORS ONLY



⚠ DASHED LINES INDICATE FIELD WIRING WHICH MUST BE INSTALLED IN ACCORDANCE WITH THE NATIONAL ELECTRICAL CODE AND ALL STATE AND LOCAL CODES.

THIS UNIT MUST  
BE GROUNDED.

**CAUTION:**

MORE THAN ONE DISCONNECT MEANS MAY BE  
REQUIRED TO DISCONNECT ALL POWER TO THIS UNIT.