

MF900 Parts List

Table of Contents

Cabinet

Air Cooled

Water Cooled

Compressor

Spout

Evaporator

Gear Motor

Control Box

Wiring Diagrams

MF900 THE PARTS ILLUSTRATIONS AND PARTS LISTS

GENERAL

This section contains the Parts Illustrations and the Parts List for each of the major assemblies in the Model MF900 Modular Flaker Ice maker.

A *No Number* designation, when used in the Part Number Column indicates the unit is not available from SCOTSMAN as an assembly. This designation is used only for the convenience and clarity of division in cataloging.

HOW TO ORDER PARTS OR ASSEMBLIES

When ordering parts or assemblies, to avoid costly delays and errors in shipment, give the part number, the complete description shown in the list, and the quantities of each part or assembly required. Also include the model name, the serial number of the icemaker for which the part is required and for parts which require color matching, the color of the cabinet.

All part numbers have TEN DIGITS (spaces), required for use in the Computer System. BE SURE to fill in ALL SPACES in the CATALOG NUMBER column, on the parts order form.

WIRING DIAGRAMS

This section is provided as an aid in understanding the electrical circuitry of the Model MF900 Modular Flaker Ice maker

////////////////// **WARNING** //////////////////////

When conducting a continuity check of the modular cuber:

1. **Disconnect the main power source.**
2. **DO NOT use an incandescent lamp or jumper wire, conduct all tests with a volt-ohm-meter.**

////////////////////////////////////

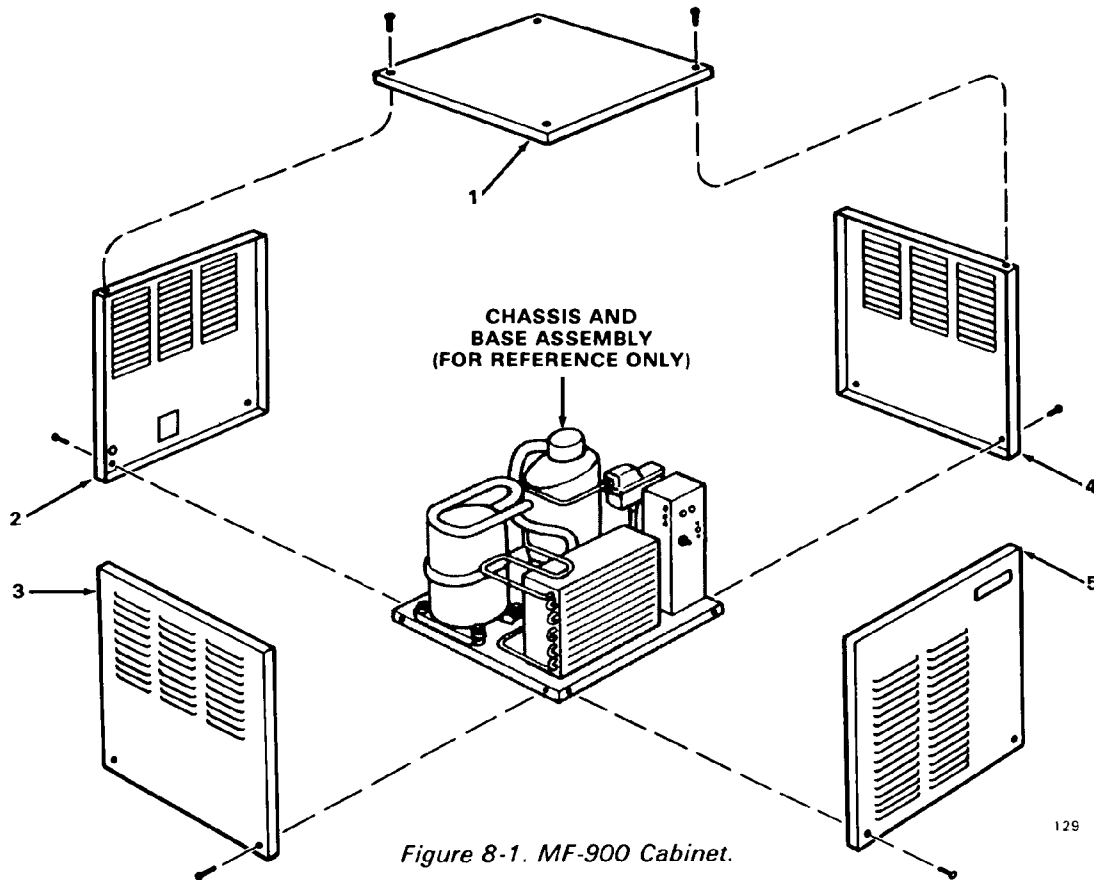
The wiring diagrams in this Section are:

- MF900AE-2A or MF900AE-7A 208 & 230/60/1
- MF900WE-2A or MF900WE-7A 208 & 230/60/1
- MF900A-3A 208-230/60/3
- MF900W-3A 208-230/60/3

With contactor isolation relay

- MF900AE-2A or MF900AE-7A 208 & 230/60/1
- MF900WE-2A or MF900WE-7A 208 & 230/60/1
- MF900A-3A 208-230/60/3
- MF900W-3A 208-230/60/3

MF900 THE PARTS ILLUSTRATIONS AND PARTS LISTS



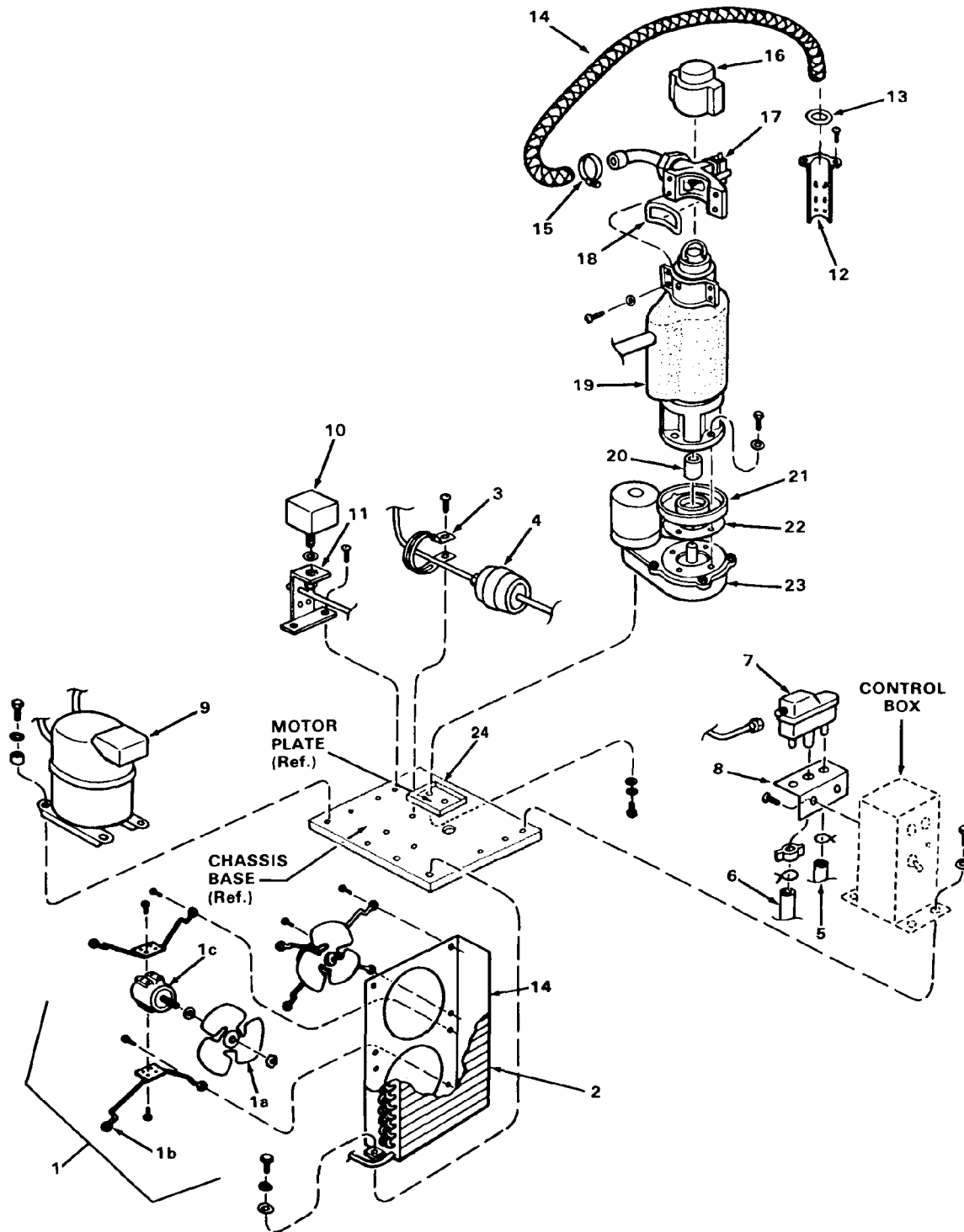
129

ITEM NUMBER	PART NUMBER	DESCRIPTION
1	No Number	MF-900 Cabinet
	A26625-003	Panel, Top (C.R.S. Painted)
	A26625-002	Panel, Top (Stainless Steel)
2		attaching parts, Index 1
	03-1417-15	Lockwasher, No. 8 Country Sunk External Tooth - Carbon Steel Zinc Plated
	03-1419-09	Screw, No. 8 x 1-1/4 S/T Flat Hd
	03-1423-06	Nut, Speed - No. 8 J-Type
	A28047-001	Panel, Rear (C.R.S. Painted)
	A28047-002	Panel, Rear (Sainless Steel)
3		attaching parts, Index 2
	03-1404-09	Screw, No. 8 x 1-1/2 T/F Tap
	03-1417-03	Lockwasher, No. 8 External Tooth - Carbon Steel Zinc Plated
	A26864-003	Panel, Left Side (C.R.S. Painted)
	A26864-002	Panel, Left Side (Stainless Steel)
		attaching parts
4		Lockwasher, No. 8 External Tooth - Carbon Steel Zinc Plated
	03-1404-09	Screw, No. 8 x 1-1/2 T/F Tap
	03-1507-00	Nut, Speed - No. 8
	A26866-003	Panel, Right Side (C.R.S. Painted)
	A26866-002	Panel, Right Side (Stainless Steel)
		attaching parts
5		Lockwasher, No. 8 External Tooth - Carbon Steel Zinc Plated
	03-1404-09	Screw, No. 8 x 1-1/2 T/F Tap
	03-1507-00	Nut, Speed - No. 8
	A26865-003	Panel, Front (C.R.S. Painted)
	A26865-002	Panel, Front (Stainless Steel)
		attaching parts
		Lockwasher, No. 8 Country Sunk External Tooth - Carbon Steel Zinc Plated
		Screw, No. 8 x 1-1/4 S/T Flat Hd
		Nut, Speed - No. 8 J-Type

OCTOBER 1986

Page 2

MF900 THE PARTS ILLUSTRATIONS AND PARTS LISTS



78-132

Figure 8-2. Major Assemblies — Air-Cooled Models.

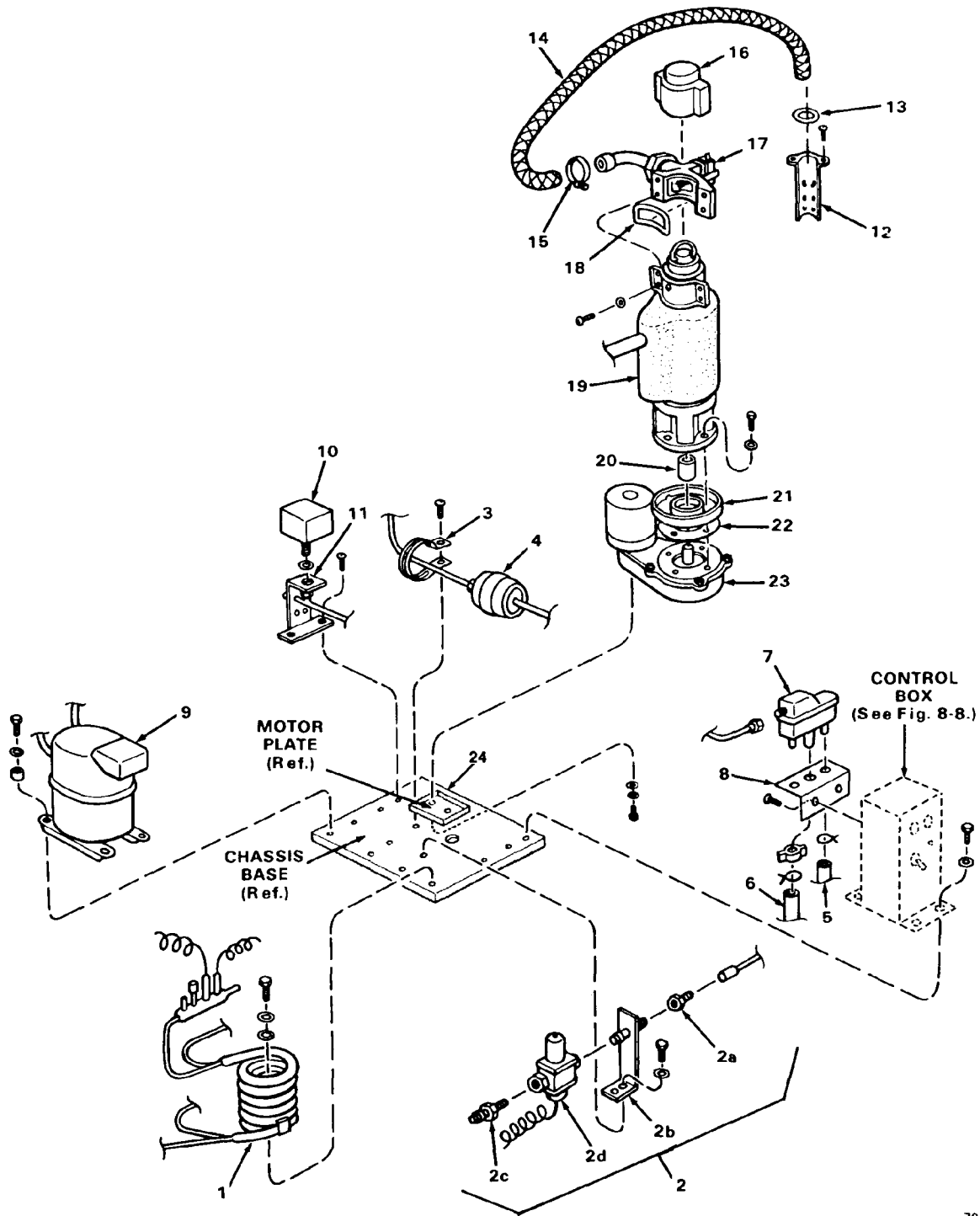
MF900 THE PARTS ILLUSTRATIONS AND PARTS LISTS

ITEM NUMBER	PART NUMBER	DESCRIPTION
	No Number	Major Assemblies - Air Cooled Models
1	No Number	Bracket Assembly, Fan Motor and Mounting
1a	18-0231-01	Blade, Fan
	No Number	Pad, Vibration (p/o Fan Motor)
	No Number	Nut, Fan Mounting (p/o Fan Blade)
1b	02-2378-01	Bracket, Fan Mounting
1c	12-1575-02	Motor, Fan
		attaching parts, Index 1c to 1b
	No Number	Screw (p/o Fan Motor)
		attaching parts, Index 1 to Condenser Shroud
2	03-1404-11	Screw, No. 1/4-20 x 1/2 T/C Hex Hd
	18-3714-01	Condenser - Air-Cooled
		attaching parts, Index 2
	03-1417-09	Lockwasher, No. 1/4 External Tooth - Carbon Steel Zinc Plated
	03-0571-00	Screw, No. 1/4-20 x 1/2 T/C Hex Hd
3	A09388-001	Brace, Drier
4	02-0544-01	Drier
		attaching parts, Index 3 and 4
	03-1360-01	Screw, No. 10-16 x 3/4 S/T
5	13-0079-03	Tube (Reservoir Overflow to Drip Pan)
6	13-0674-09	Tube (Reservoir to Freezer Inlet)
		attaching parts, Index 5 and 6
	02-0535-00	Clamp (Index 5)
	02-0694-00	Clamp (Index 6)
7	02-2217-01	Reservoir
	02-2217-02	Valve Assembly, Float (Not Shown)
		attaching parts, Index 7
	No Number	Wing Nut (p/o Reservoir)
8	A20959-000	Bracket, Mounting
		attaching parts, Index 8
	03-1572-01	Screw, No. 8-18 x 1/2 Phil Pan Hd
9	No Number	Compressor (See Figure 8-4)
		attaching parts, Index 9
	18-2300-27	Grommet
	18-2300-26	Sleeve, Mounting
	03-1417-12	Lockwasher, No. 1/16 External Tooth - Carbon Steel Zinc Plated
	03-1408-29	Washer, Special
	03-1405-40	Screw, No. 5/16-18 x 1-3/4 Hex Cap
10	11-0296-00	Control, Pressure — H ² O
11	A27993-001	Bracket, Utility
	13-0617-26	O-Ring
		attaching parts, Index 10 and 11
	03-1394-00	Nut, Pal
	03-1360-01	Screw, No. 10-16 x 3/4 S/T
12	A30487-001	Bracket, Bin Thermo
		attaching part, Index 12
	No Number	Screw, No. 8 Sheet Metal
13	13-0806-01	Pad, Sealing
14	A26161-001	Condensor Shroud

MF900 THE PARTS ILLUSTRATIONS AND PARTS LISTS

ITEM NUMBER	PART NUMBER	DESCRIPTION
14	A26537-002	Tube, Ice attaching parts, Index 14 and 15
15	02-0179-02	Clamp, Hose
16	13-0809-01	Cap, Freezer
17	No Number	Spout Assembly (See Figure 8-5)
18	02-1437-00	Gasket, Spout attaching parts, Index 17 and 18
	03-1417-07	Lockwasher, No. 1/4 Internal Tooth - Phosphor Bronze
	03-1544-03	Screw, No. 1/4-20 x 1 Soc-Hd Cap (SS)
19	No Number	Freezer Assembly (See Figure 8-6) attaching parts, Index 19
	03-1408-35	Washer, Special
	03-1410-04	Lockwasher, No. 5/16 Helical Spring - Carbon Steel Zinc Plated
	03-1420-01	Screw, No. 5/16-18 x 7/8 Hex Cap
20	15-0573-01	Coupling
21	A21290-000	Pan, Drip
22	13-0704-00	Gasket
23	A32402-022	Drivemotor Assembly (230 V) See page 13 attaching parts, Index 23
	03-1417-09	Lockwasher, No. 1/4 External Tooth - Carbon Steel Zinc Plated
	03-0571-00	Screw, No. 1/4-20 x 1/2 T/C Hex Cap
24	A28207-001	Motor Plate Not Shown
25	A32585-001	Motor Shield Not Shown
26	A32423-001	Motor Strap Not Shown
27	16-0563-00	Valve Cap Not Shown
28	16-0560-00	Valve Core Not Shown

MF900 THE PARTS ILLUSTRATIONS AND PARTS LISTS



78-133

Figure 8-3. Major Assemblies - Water-Cooled.

MF900 THE PARTS ILLUSTRATIONS AND PARTS LISTS

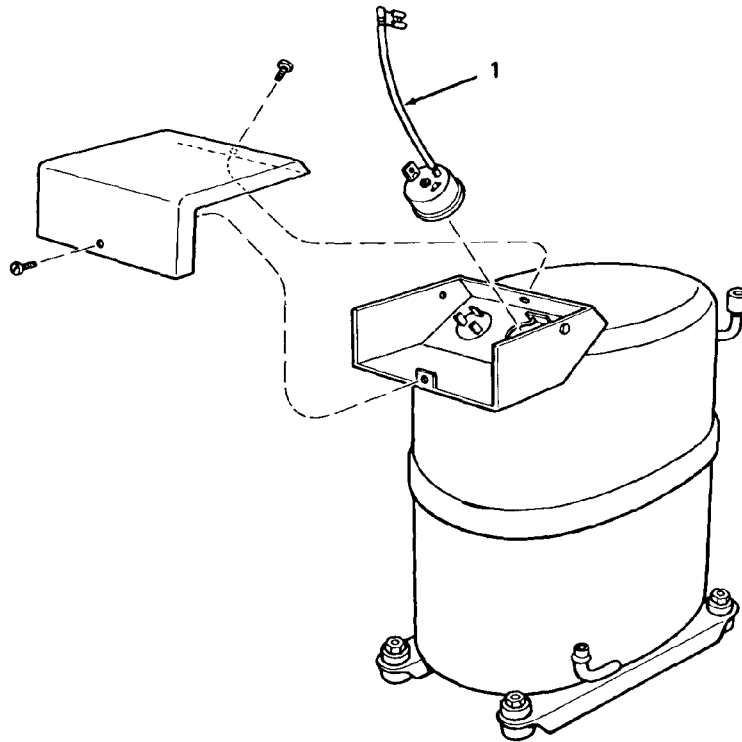
ITEM NUMBER	PART NUMBER	DESCRIPTION
1	No Number	Major Assemblies - Water-Cooled Model
	18-3306-02	Condenser - Water-Cooled attaching parts, Index 1
2	03-1417-09	Lockwasher, No. 1/4 External Tooth - Carbon Steel Zinc Plated
	03-0571-00	Screw, No. 1/4-20 x 1/2 T/C Hex Hd
2a	No Number	Regulator Assembly, Water attaching parts, Index 2
	03-1417-09	Lockwasher, No. 1/4 External Tooth - Carbon Steel Zinc Plated
2b	03-0571-00	Screw, No. 1/4-20 x 1/2 T/C Hex Hd
	16-0677-01	Union, Half - No. 5/8-18 x 3/8 Flare
2c	A15924-000	Nipple Assembly, Pipe (w/Bracket)
2d	16-0355-00	Coupling - 3/8 NPT x 3/8 Flare Brass
3	11-0198-02	Valve, Water Regulator
4	A09388-000	Brace, Drier
	02-0544-01	Drier attaching parts, Index 3 and 4
5	03-1360-01	Screw, No. 10-16 x 3/4 S/T
	13-0079-03	Tube (Reservoir Overflow to Drip Pan)
6	13-0674-09	Tube (Reservoir to Freezer Inlet) attaching parts, Index 5 and 6
	02-0535-00	Clamp (Index 5)
7	02-0694-00	Clamp (Index 6)
	02-2217-01	Reservoir
8	02-2217-02	Valve Assembly, Float (Not shown) attaching parts, Index 7
	No Number	Wing Nut (p/o Reservoir)
9	A20959-000	Bracket, Mounting attaching parts, Index 8
	03-1572-01	Screw, No. 8-18 x 1/2 S/T Phil Pan Hd
10	No Number	Compressor attaching parts, Index 9
	18-2300-27	Grommet
11	18-2300-26	Sleeve, Mounting
	03-1417-12	Lockwasher, No. 5/16 External Tooth - Carbon Steel Zinc Plated
12	03-1408-29	Washer, Special
	03-1405-40	Screw, No. 5/16-18 x 1-3/4 Hex Cap
11	11-0296-00	Control, Pressure - H ² O
	A27993-001	Bracket, Utility
12	13-0617-26	O-Ring
	12-1213-06	Bushing, Snap attaching parts, Index 10 and 11
12	03-1394-00	Nut, Pal
	03-1360-01	Screw, No. 10-16 x 3/4 S/T
12	A30487-001	Bracket, Bin Thermo attaching part, Index 12
	No Number	Screw, No. 8 Sheet Metal

MF900 THE PARTS ILLUSTRATIONS AND PARTS LISTS

ITEM NUMBER	PART NUMBER	DESCRIPTION
13	13-0806-01	Pad, Sealing
14	A26537-002	Tube, Ice attaching parts, Index 14 and 15
15	02-0179-02	Clamp, Hose
16	13-0809-01	Cap, Freezer
17	No Number	Spout Assembly (See Figure 8-5) attaching parts, Index 17 and 18
18	02-1437-00	Gasket, Spout
	03-1417-07	Lockwasher, No. 1/4 Internal Tooth - Phosphor Bronze
	03-1544-03	Screw, No. 1/4-20 x 1 Soc-Hd Cap
19	No Number	Freezer Assembly (See Figure 8-6) attaching parts, Index 19
	03-1408-35	Washer, Special
	03-1410-04	Lockwasher, No. 5/16 Helical Spring - Carbon Steel Zinc Plated
	03-1420-01	Screw, No. 5/16-18 x 7/8 Hex Cap
20	15-0573-01	Coupling
21	A21290-000	Pan, Drip
22	13-0704-00	Gasket
23	A32402-022	Drivemotor Assembly (230 V) See Page 13 attaching parts, Index 23
	03-1417-09	Lockwasher, No. 1/4 External Tooth - Carbon Steel Zinc Plated
	03-0571-00	Screw, No. 1/4 20 x 1/2 T/C Hex Cap
24	A28207-001	Motor Plate
25	A32585-001	Motor Shield Not Shown
26	A32423-001	Motor Strap Not Shown
27	16-0563-00	Valve Cap Not Shown
28	16-0560-00	Valve Core Not Shown

NOTE: See Page 14 for replacement parts within the Control Box Assembly.

MF900 THE PARTS ILLUSTRATIONS AND PARTS LISTS



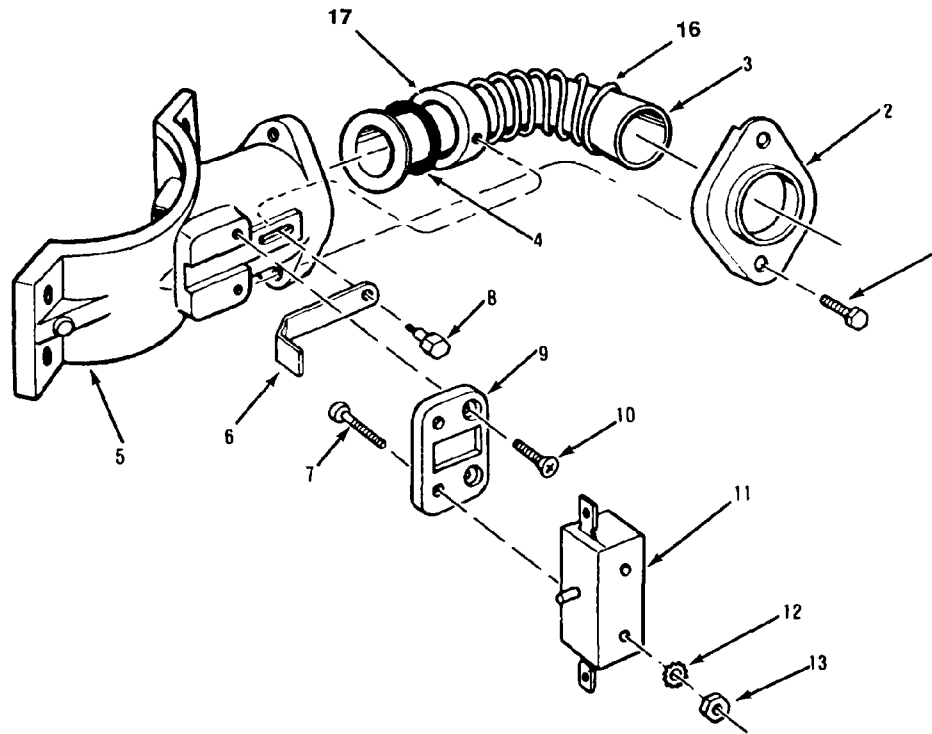
78-128

Figure 8-4. Compressor Assembly

ITEM NUMBER	PART NUMBER	DESCRIPTION
	18-3800-02	Compressor Assembly — 230/60/1
	18-3800-03	Compressor Assembly — 208-220/60/3
	18-3800-07	Compressor Assembly — 208/60/1
		(See Figure 8-2/9 and 8-3/9 for next higher Assembly)
1	18-2300-25	Overload — (230/60/1)
	18-2300-32	Overload — (208/60/1)

NOTE: 208-220/60/3 internally protected. No service replacement part.

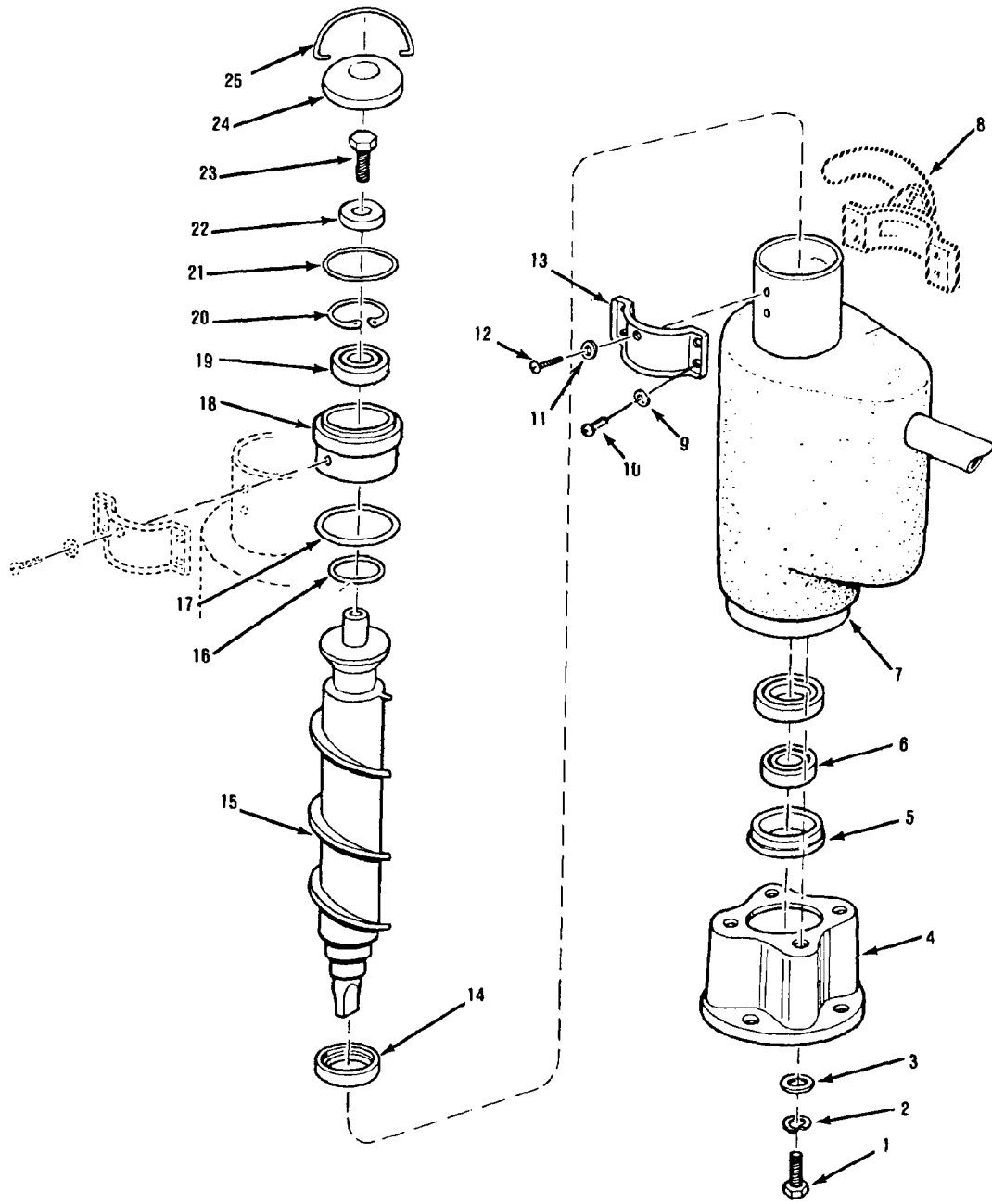
MF900 THE PARTS ILLUSTRATIONS AND PARTS LISTS



SPOUT ASSEMBLY — STAINLESS STEEL

ITEM NUMBER	PART NUMBER	DESCRIPTION
1	03-1405-02	Screw 1/4-20 x 3/8 Hex Head Cap
2	A29041-001	Retainer Plate
3	02-2490-01	Tube, Ice Discharge
4	13-0617-43	"O" Ring
5	A29050-001	Spout
6	A29429-002	Actuator, Switch
7	03-1418-38	Screw No. 6-32 x 1 Flat Head Machine Phil Recess
8	A25305-001	Screw, Shoulder
9	02-2377-01	Barrier, Thermal
10	03-1418-01	Screw No. 6-32 x 3/8 Flat Head Machine - Phil Recess
11	12-1664-01	Switch
12	03-1417-01	Lockwasher No. 6 External Tooth Phosphor Bronze
13	03-1406-01	Nut No. 6-32 Hex Machine Screw
14	A29430-020	Complete Assembly
15	02-1437-00	Spout Gasket (Not Shown)
16	02-2145-04	Spring
17	A29089-001	Collar

MF900 THE PARTS ILLUSTRATIONS AND PARTS LISTS



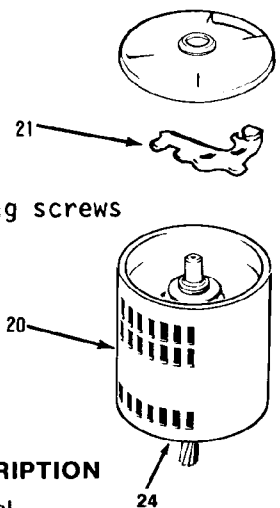
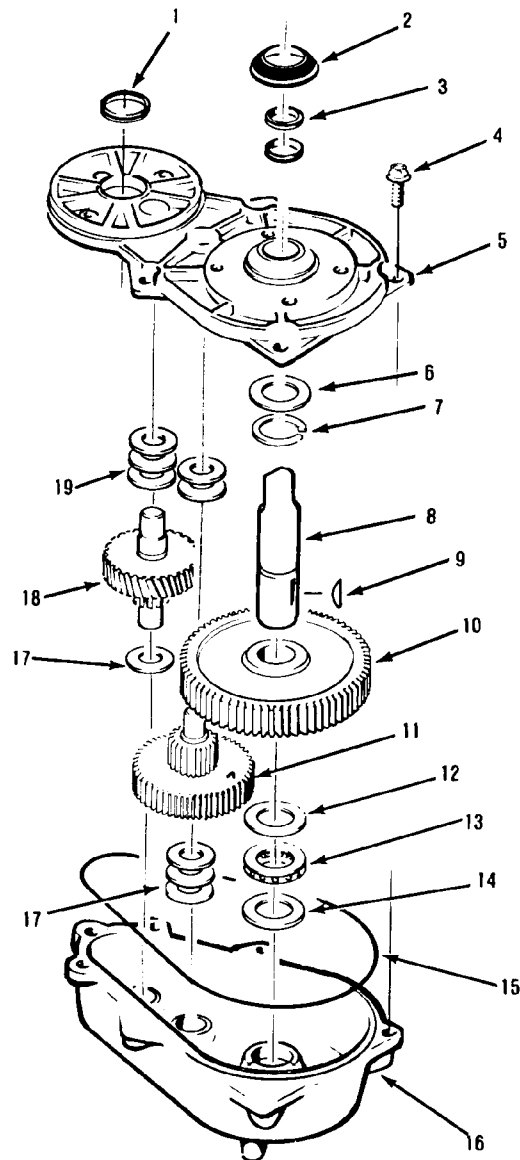
Evaporator Assembly

MF900 THE PARTS ILLUSTRATIONS AND PARTS LISTS

FREEZER ASSEMBLY

ITEM NUMBER	PART NUMBER	DESCRIPTION
1	03-1405-41	Screw
2	03-1408-03	Washer
3	03-1410-04	Washer
4	02-1629-00	Adapter
5	A10591-000	Bearing Retainer
6	02-0619-00	Bearing
7	A34572-020	Freezer
8	A29430-020	Spout
9	03-1409-20	Washer
10	03-1506-03	Screw
11	03-1409-20	Washer
12	03-1506-03	Screw
13	A24928-001	Spout Plate
14	02-0929-01	Water Seal
15	A29467-001	Auger
16	13-0617-15	"O" Ring
17	13-0617-40	"O" Ring
18	A26708-001	Bearing Retainer and Bearing
19	02-0646-00	Bearing
20	03-1558-04	Retainer Ring
21	13-0617-20	"O" Ring
22	A06273-000	Washer
23	03-1405-36	Screw
24	A08581-000	Freezer Cap
25	A08582-000	Breaker Hook

MF900 THE PARTS ILLUSTRATIONS AND PARTS LISTS



*NOTE: Torque cover mounting screws
250-300 inch pounds.

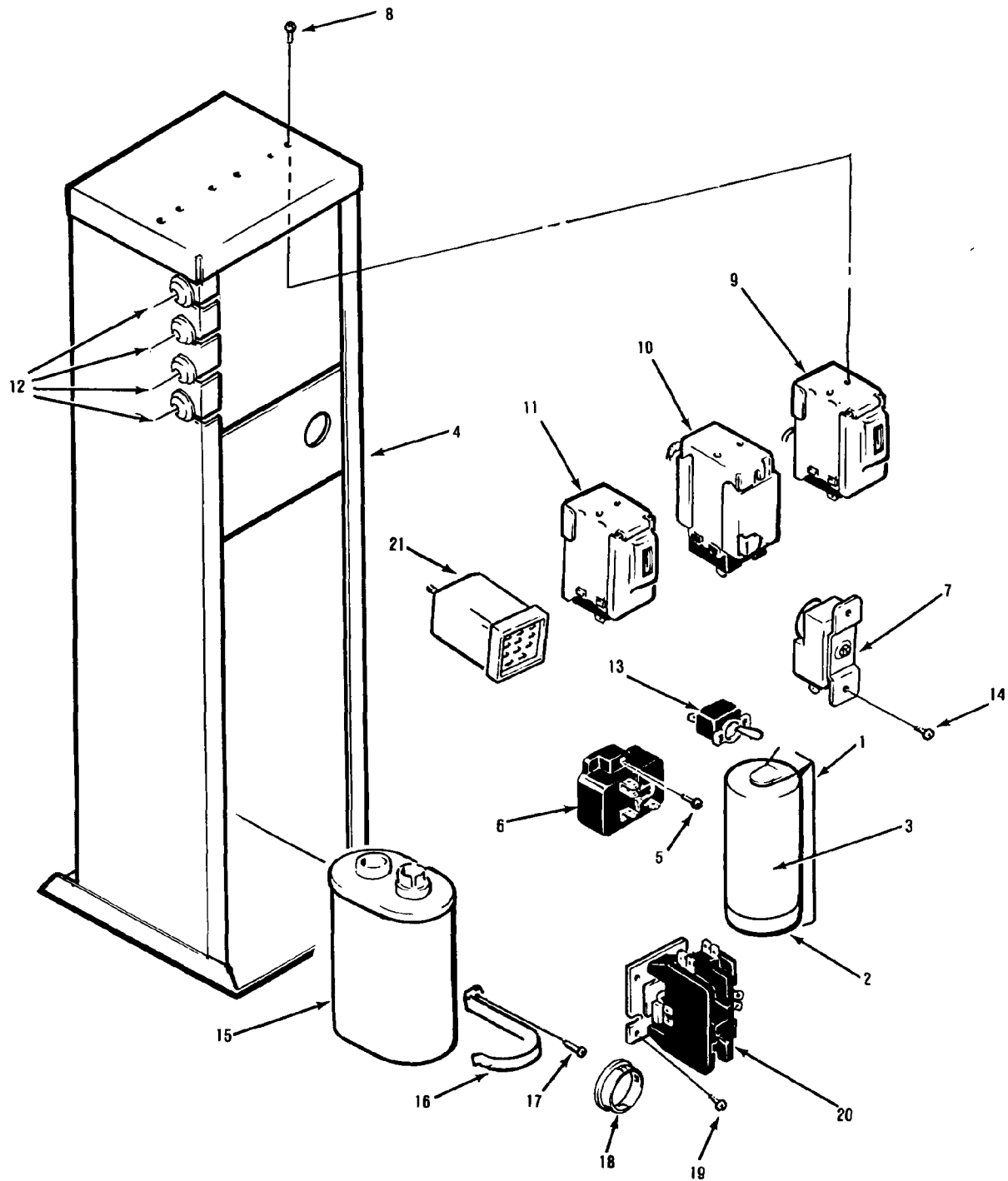
DRIVE MOTOR ASSEMBLY

ITEM NUMBER	PART NUMBER	DESCRIPTION
1	02-1606-00	Oil Seal
2	13-0709-02	Water Shed
3	02-1607-01	Oil Seal
4	03-1251-01	Screw
5	A31230-001	Gear Case Cover Assembly *
6	02-1681-00	Thrust Race
7	03-1363-00	Retaining Ring
8	02-1652-00	Shaft, Output
9	03-1364-00	Key
10	02-1653-00	Gear, Output
11	02-2071-00	Third Pinion Assembly, Second Gear and
12	02-1681-00	Thrust Race
13	A32368-020	Bearing
14	02-1679-00	Thrust Race
15	A26103-001	"O" Ring
16	A31230-001	Gear Case Assembly Bottom *
17	03-1408-24	Washer
18	02-2072-00	Second Pinion Assembly, First Gear and
19	03-1408-24	Washer
20	A32425-002	Drive Motor
21	12-1741-22	Switch, Start (Emerson)
	12-1741-28	Switch, Start (General Electric)
	12-2314-21	PSC Type
22	A32402-022	Gearmotor Assembly Complete
23	A25835-001	Gearcase Oil - 1 Pint
24	12-1741-29	Bearing Shaft G.E. Motor (Not Shown)
	12-1741-20	Bearing Shaft Emerson Motor (Not Shown)

*NOTE: Gearcase cover and
bottom are sold as a set only.
Order Part Number A31230-001.

Drive Motor Assembly

MF900 THE PARTS ILLUSTRATIONS AND PARTS LISTS



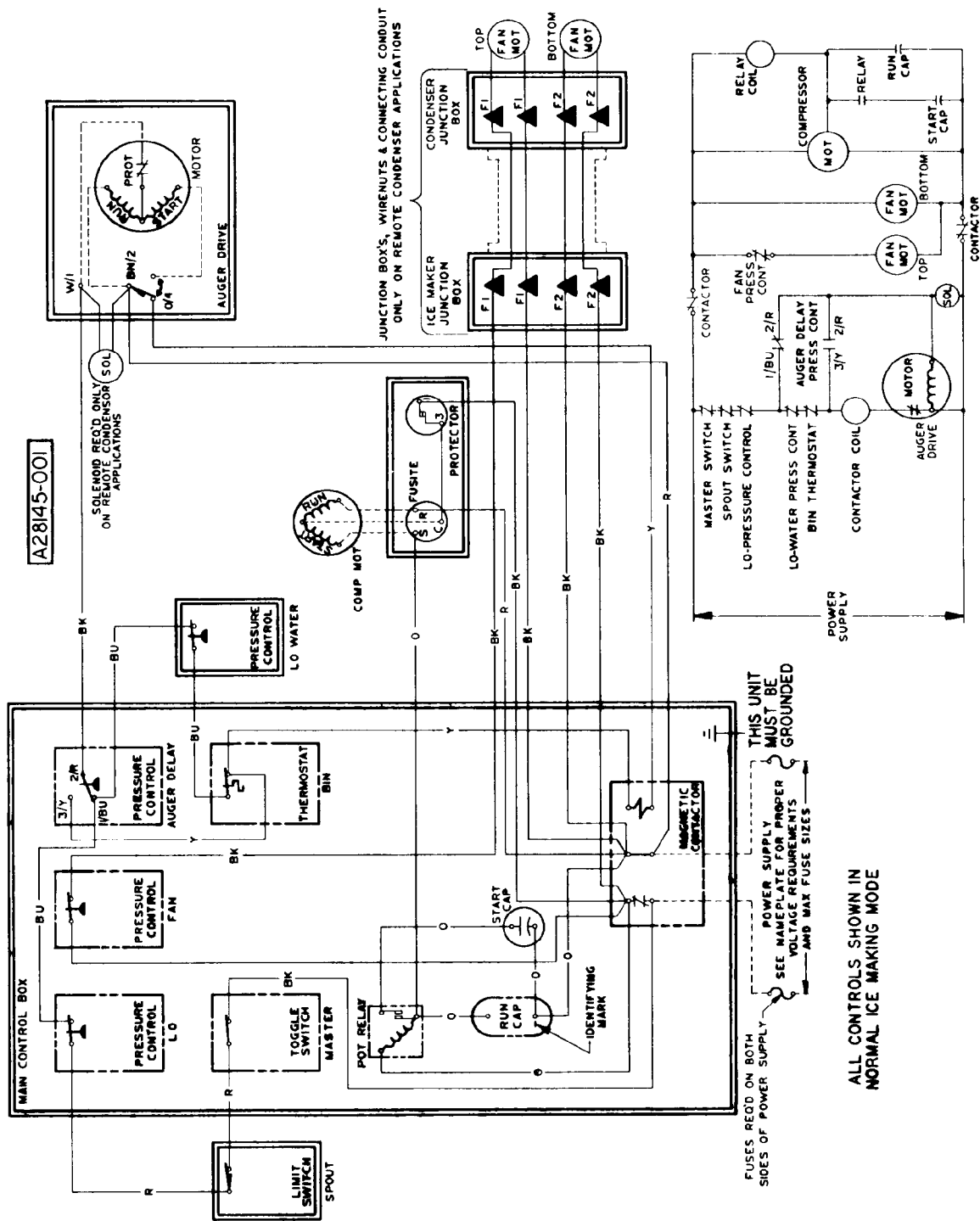
Control Box Assembly

MF900 THE PARTS ILLUSTRATIONS AND PARTS LISTS

CONTROL BOX

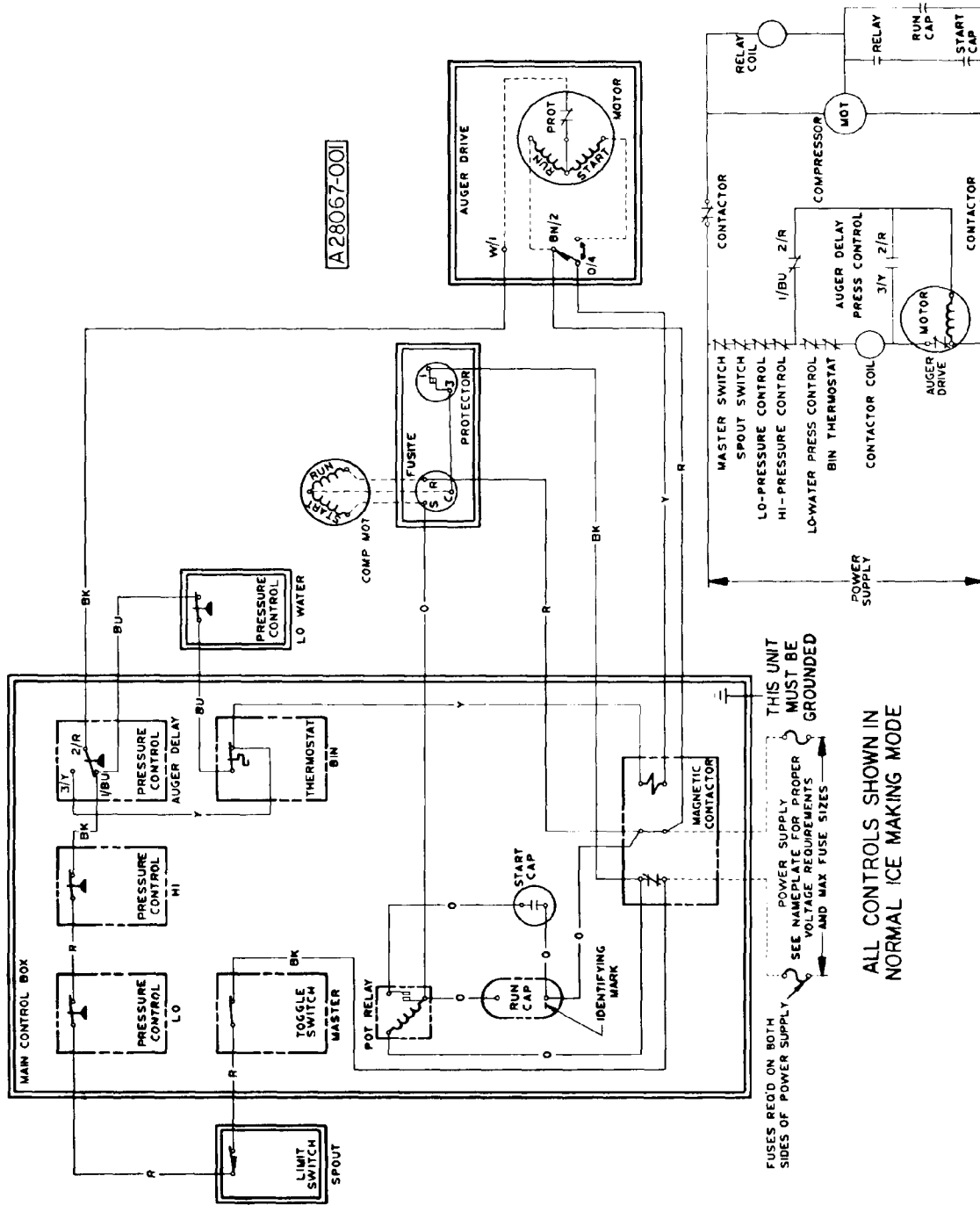
ITEM NUMBER	PART NUMBER	DESCRIPTION
1	18-2200-39	Start Capacitor Bracket
2	18-3724-01	Capacitor Cap
3	18-1901-15	Start Capacitor — 230-208/60/1
4	<i>No Number</i>	Control Box
5	03-1403-04	Screw
6	18-1903-29	Relay — 230/60/1
	18-1903-34	Relay — 208/60/1
7	11-0354-00	Bin Thermostat
8	03-1403-02	Screw
9	11-0402-01	Auger Delay Control
10	11-0403-01	Fan Pressure Control (A-C)
	11-0388-02	Hi Pressure Control (W-C)
11	11-0420-01	Low Pressure Control
12	13-0557-00	Grommet
13	12-0426-01	Master Switch
14	03-1403-17	Screw
15	18-1902-29	Run Capacitor — 230/60/1
	18-1902-34	Run Capacitor — 208/60/1
16	<i>No Number</i>	Capacitor Bracket
17	03-1403-23	Screw
18	12-1213-12	Snap Bushing
19	03-1403-17	Screw
20	12-2048-02	Contactors 230-208/60/1
	12-0739-02	Contactors 208-230/60/3
21	12-2090-05	Relay, Contactor Isolation, 208-230
22	A28063-001	Cover - Control Box Not Shown

MF900 THE PARTS ILLUSTRATIONS AND PARTS LISTS



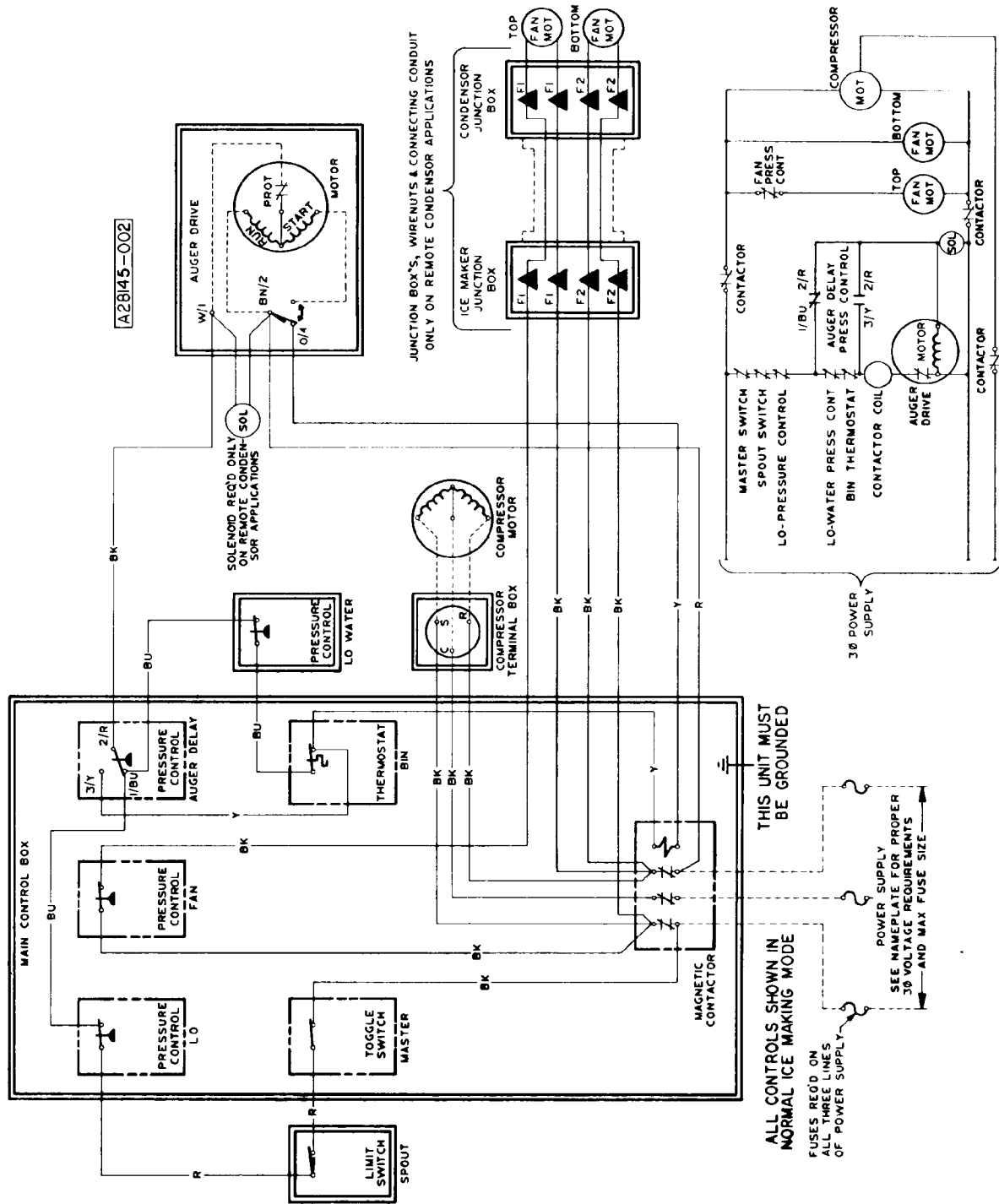
Wiring Diagram Air-Cooled Model — MF-900A-2A & MF-900A-7A.

MF900 THE PARTS ILLUSTRATIONS AND PARTS LISTS



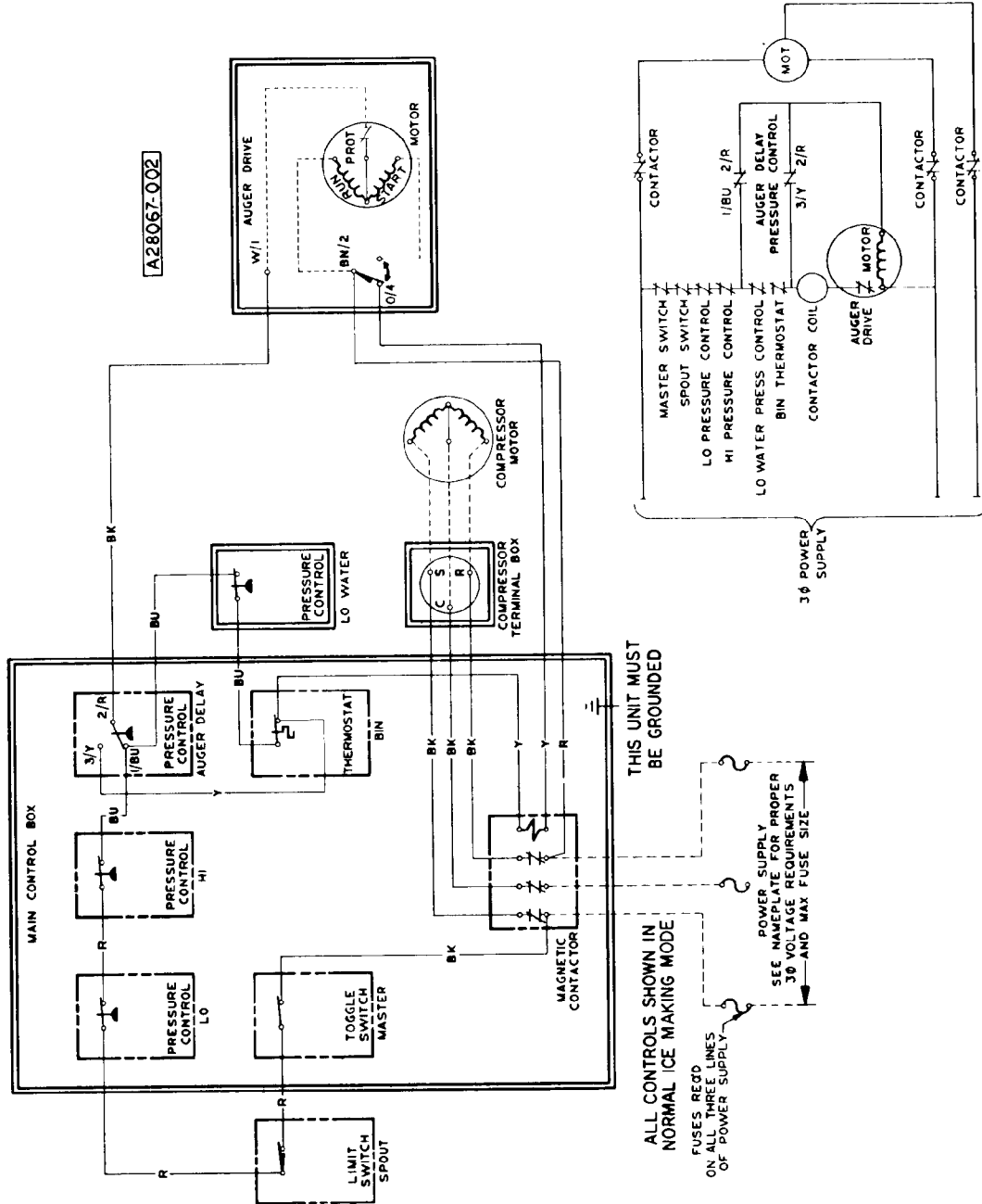
Wiring Diagram Water-Cooled Model - MF-900W-2A & MF-900W-7A.

MF900 THE PARTS ILLUSTRATIONS AND PARTS LISTS



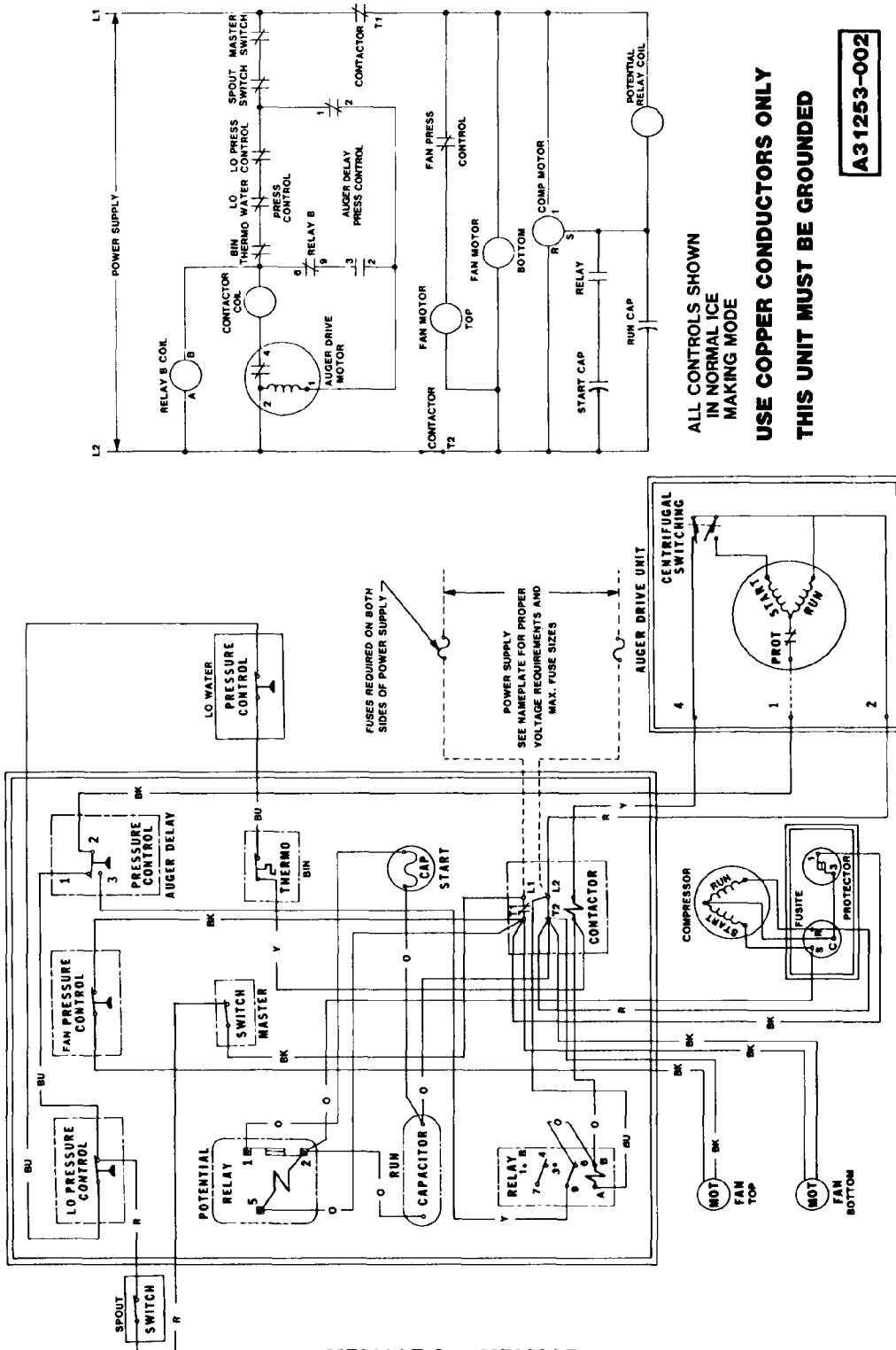
Wiring Diagram Air-Cooled Model - MF-900A-3A.

MF900 THE PARTS ILLUSTRATIONS AND PARTS LISTS



Wiring Diagram Water-Cooled Model - MF-900W-3A.

MF900 THE PARTS ILLUSTRATIONS AND PARTS LISTS

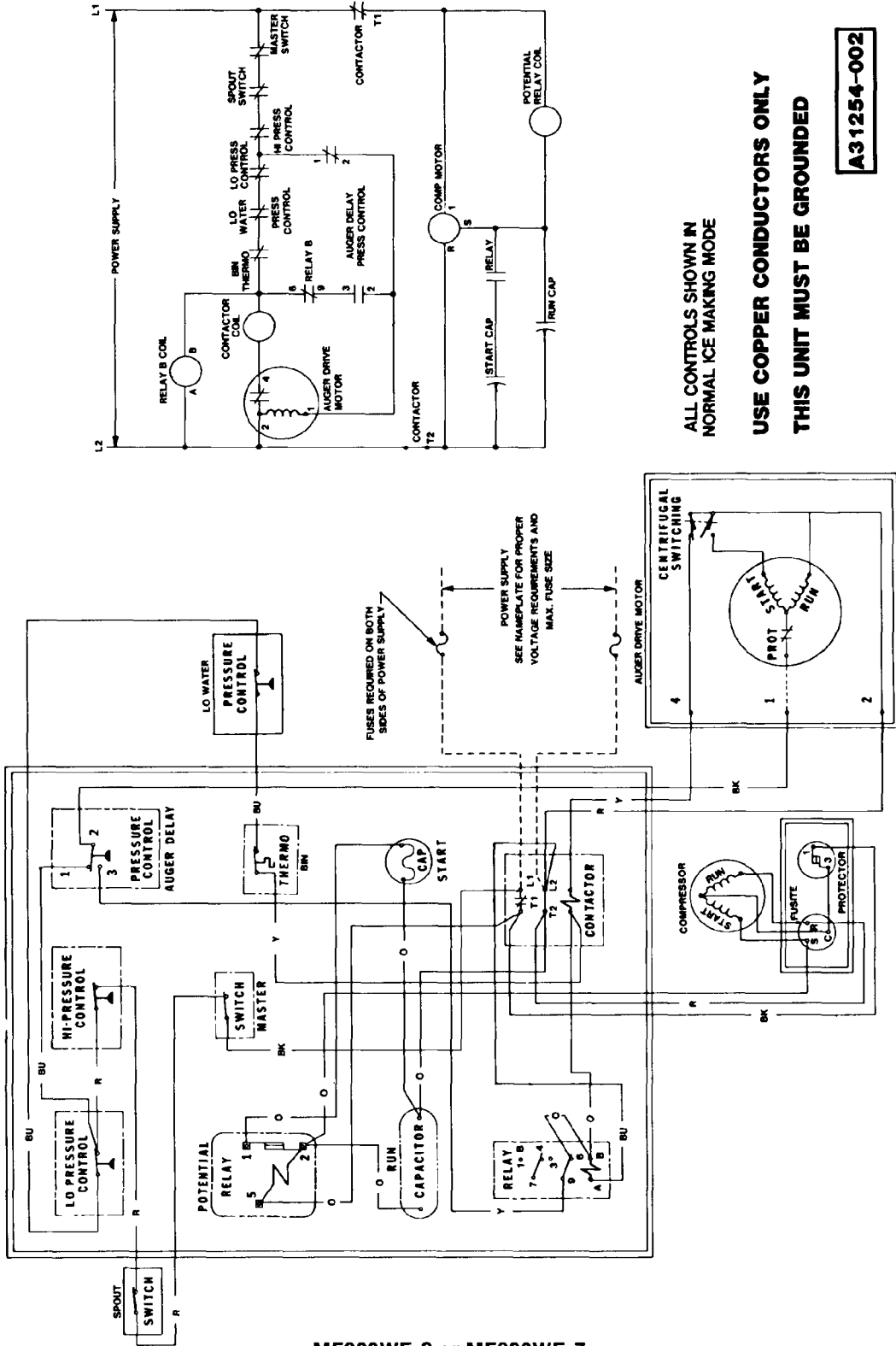


ALL CONTROLS SHOWN
IN NORMAL ICE
MAKING MODE
USE COPPER CONDUCTORS ONLY
THIS UNIT MUST BE GROUNDED

A31253-002

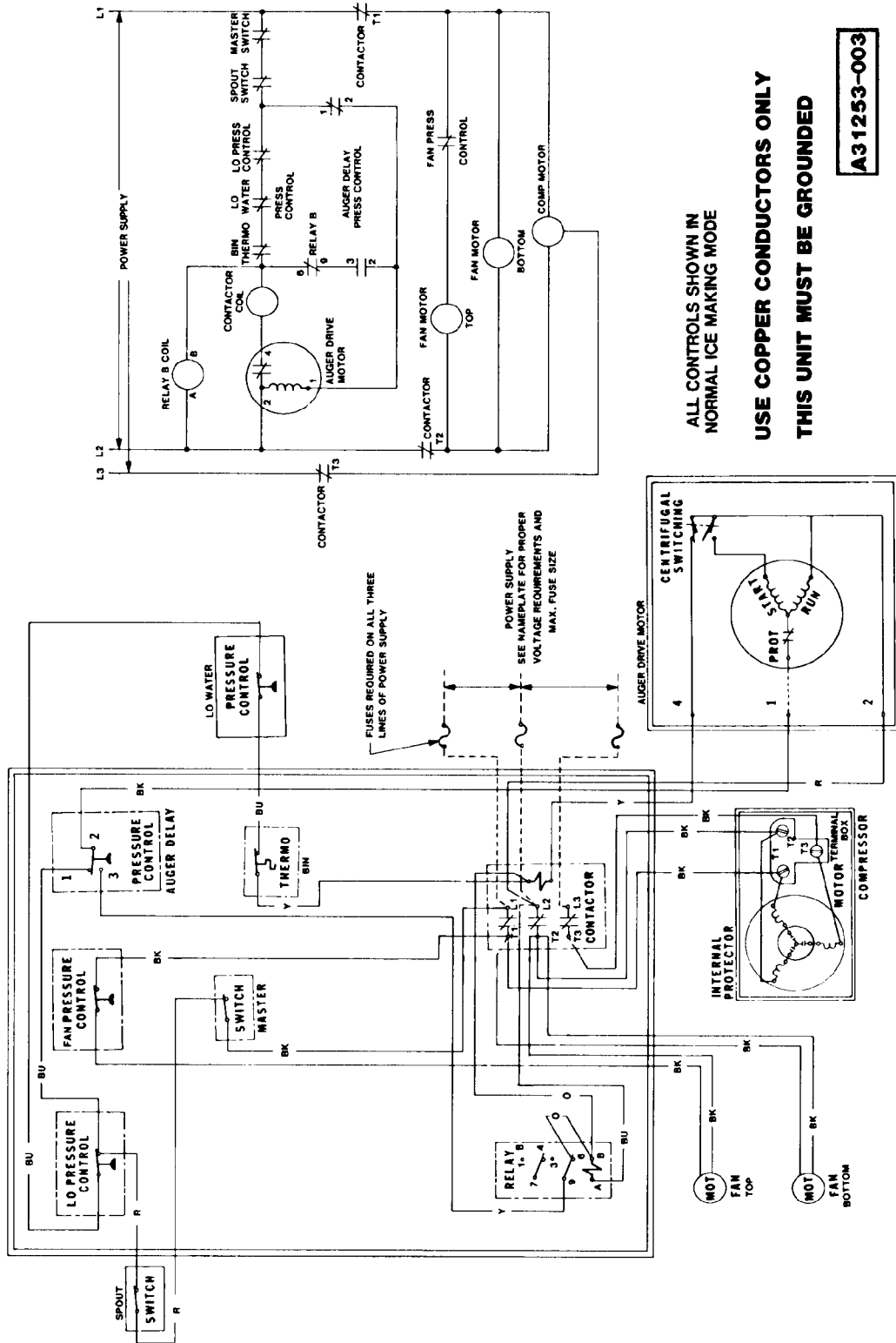
MF900AE-2 or MF900AE-7

MF900 THE PARTS ILLUSTRATIONS AND PARTS LISTS



MF900WE-2 or MF900WE-7

MF900 THE PARTS ILLUSTRATIONS AND PARTS LISTS



ALL CONTROLS SHOWN IN
NORMAL ICE MAKING MODE

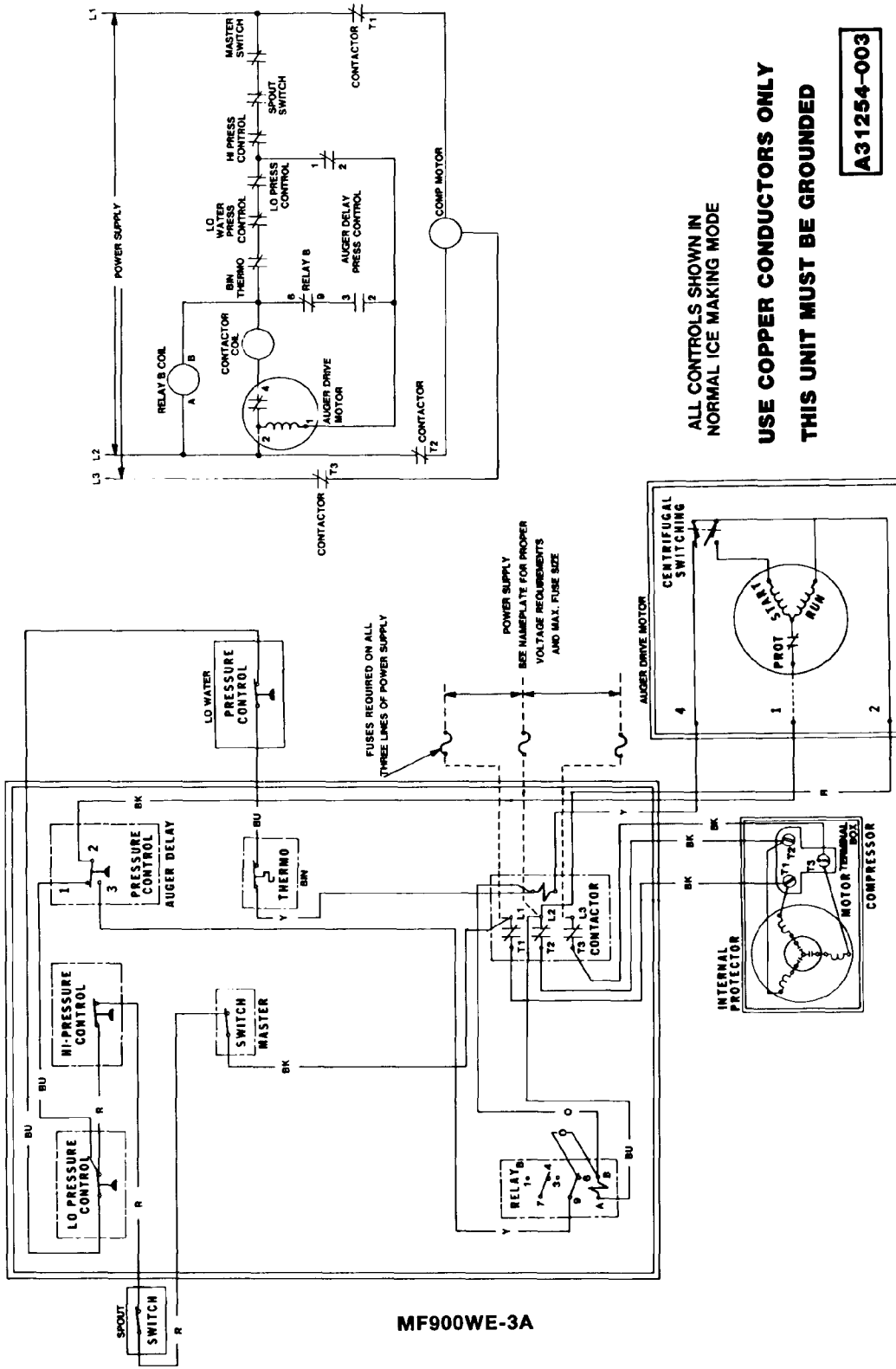
USE COPPER CONDUCTORS ONLY

THIS UNIT MUST BE GROUNDED

A31253-003

MF900AE-3A

MF900 THE PARTS ILLUSTRATIONS AND PARTS LISTS



ALL CONTROLS SHOWN IN
NORMAL ICE MAKING MODE

USE COPPER CONDUCTORS ONLY

THIS UNIT MUST BE GROUNDED

A31254-003