

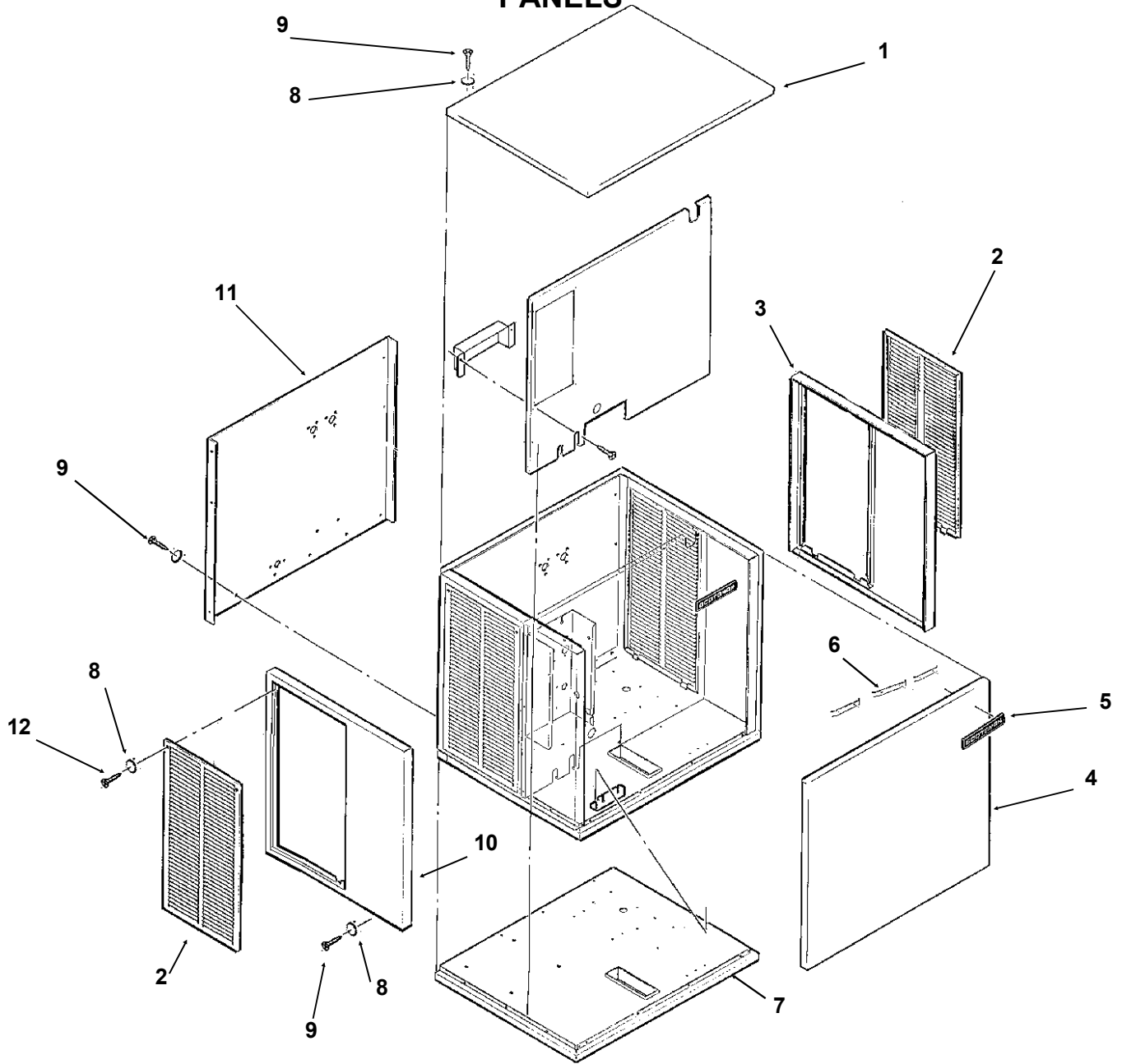
# NME1250R SERVICE PARTS

This parts list contains the part numbers and descriptions of the service parts for the NME1250R remote ice machine.

## Table of Contents

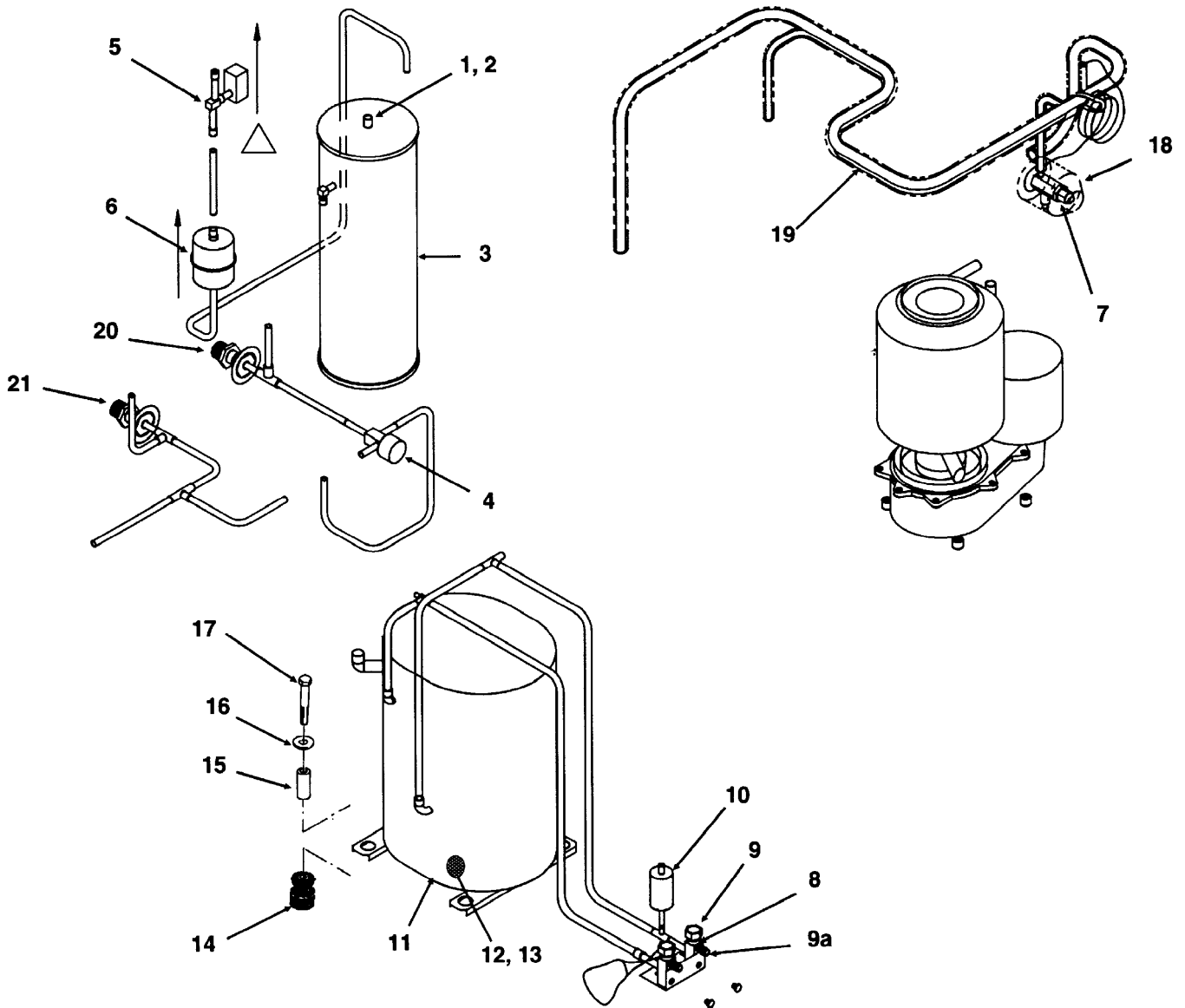
PANELS .....	Page 2
REFRIGERATION .....	Page 3
EVAPORATOR .....	Page 4
CONTROL BOX .....	Page 5
GEARMOTOR .....	Page 6
RESERVOIR, DRAINS, ICE CHUTE, ICE LEVEL SENSORS .....	Page 7
REMOTE CONDENSER .....	Page 8
Component Layout Diagram .....	Page 9
Schematic Diagram .....	Page 10

# NME1250R SERVICE PARTS PANELS



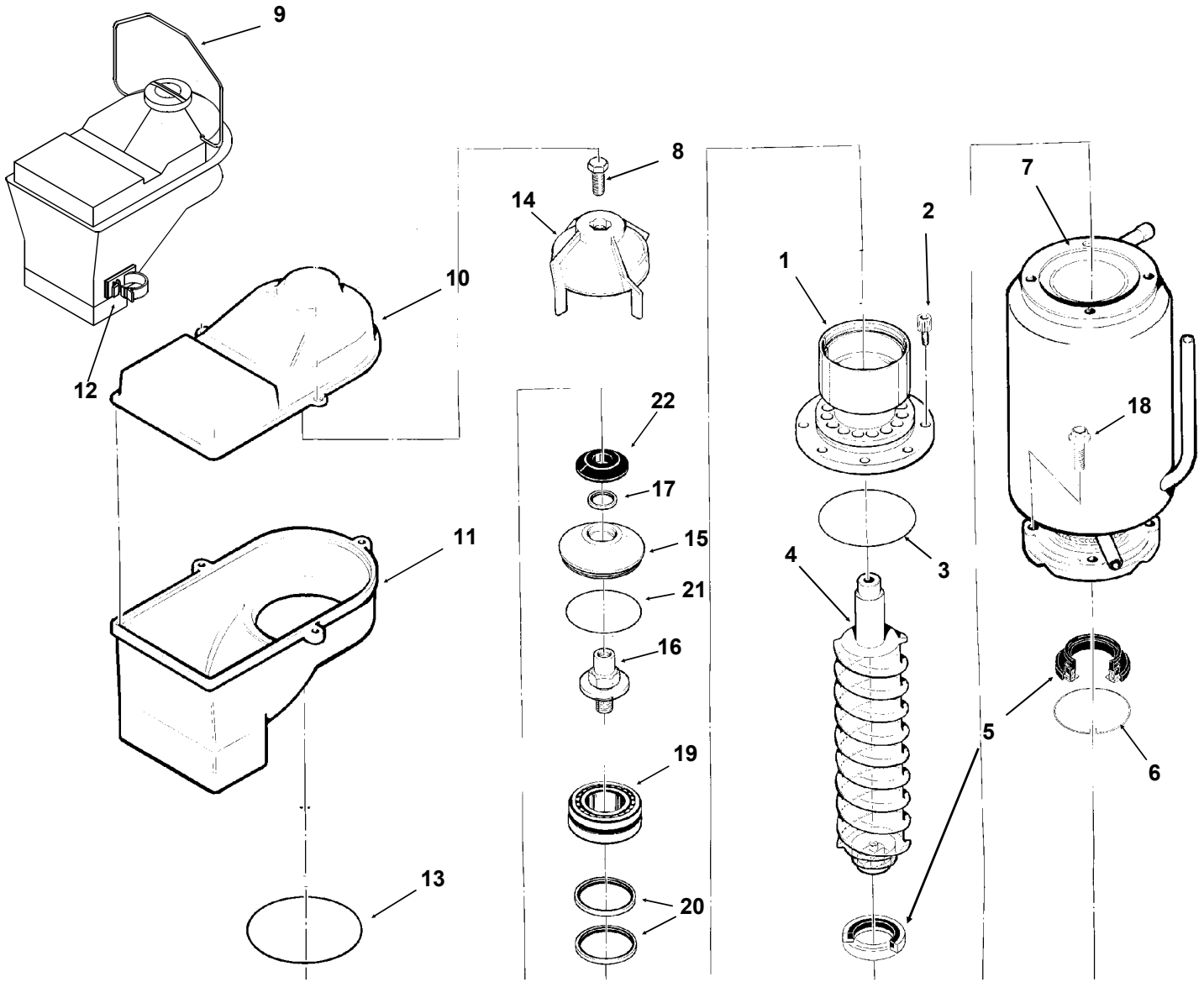
ITEM NUMBER	PART NUMBER	DESCRIPTION	ITEM NUMBER	PART NUMBER	DESCRIPTION
1.	A32159-001	Top Panel sandalwood	5.	15-0711-01	Emblem for sandalwood
	A32159-015	Top panel, gray		15-0711-02	Emblem for stainless or gray
	A32159-002	Top Panel Stainless	6.	03-0271-00	Clip For Emblem (3)
2.	A32161-001	Service Panel sandalwood	7.	A35955-001	Base Assembly
	A32161-015	Service panel, gray	8.	03-1417-27	Washer
	A33946-002	Service Panel for S.S.	9.	03-1531-01	Screw
3.	A32162-001	Right End Panel sandalwood	10.	A32163-001	Left End Panel sandalwood
	A32162-015	Right end panel, gray		A32163-015	Left end panel, gray
	A32162-002	Right End Panel S.S.		A32163-002	Left End Panel S.S.
4.	A32160-001	Front Panel sandalwood	11.	A32201-003	Back Panel SS
	A32160-015	Front panel, gray		A32201-015	Back panel, gray
	A32160-002	Front Panel S.S.		A32201-001	Back panel, sandalwood
			12.	03-1404-12	Screw

# NME1250R SERVICE PARTS REFRIGERATION



ITEM NUMBER	PART NUMBER	DESCRIPTION	ITEM NUMBER	PART NUMBER	DESCRIPTION
1.	03-1406-13	Nut	12.	12-2308-01	Heater
2.	03-1410-06	Washer	13.	12-2309-01	clip
3.	16-0761-01	Receiver	14.	18-2200-28	Grommet
4.	11-0422-25	Lo Temp Valve	15.	18-2200-27	Sleeve
5.	12-2135-22	Liquid Line Valve	16.	03-1407-07	Washer
6.	02-3319-02	Drier	17.	03-1405-20	Bolt
7.	11-0482-21	Thermo. Exp. Valve	18.	A31961-020	TXV insulation
8.	16-0832-20	Access valve	19.	no number	Suction line
9.	16-0832-02	Stem cap	20.	16-0850-03	Quick connect, 3/8
9a.	16-0832-03	Core cap	21.	16-0850-01	Quick connect, 1/2"
10.	11-0485-21	High Press. Switch	Not shown, parts to attach receiver:		
11.	18-8726-23	Compressor 208-230/60/1 (includes item 12)		03-1645-01	Screw
				03-1417-09	Washer
				A31801-002	Lower Bracket

# NME1250R SERVICE PARTS EVAPORATOR



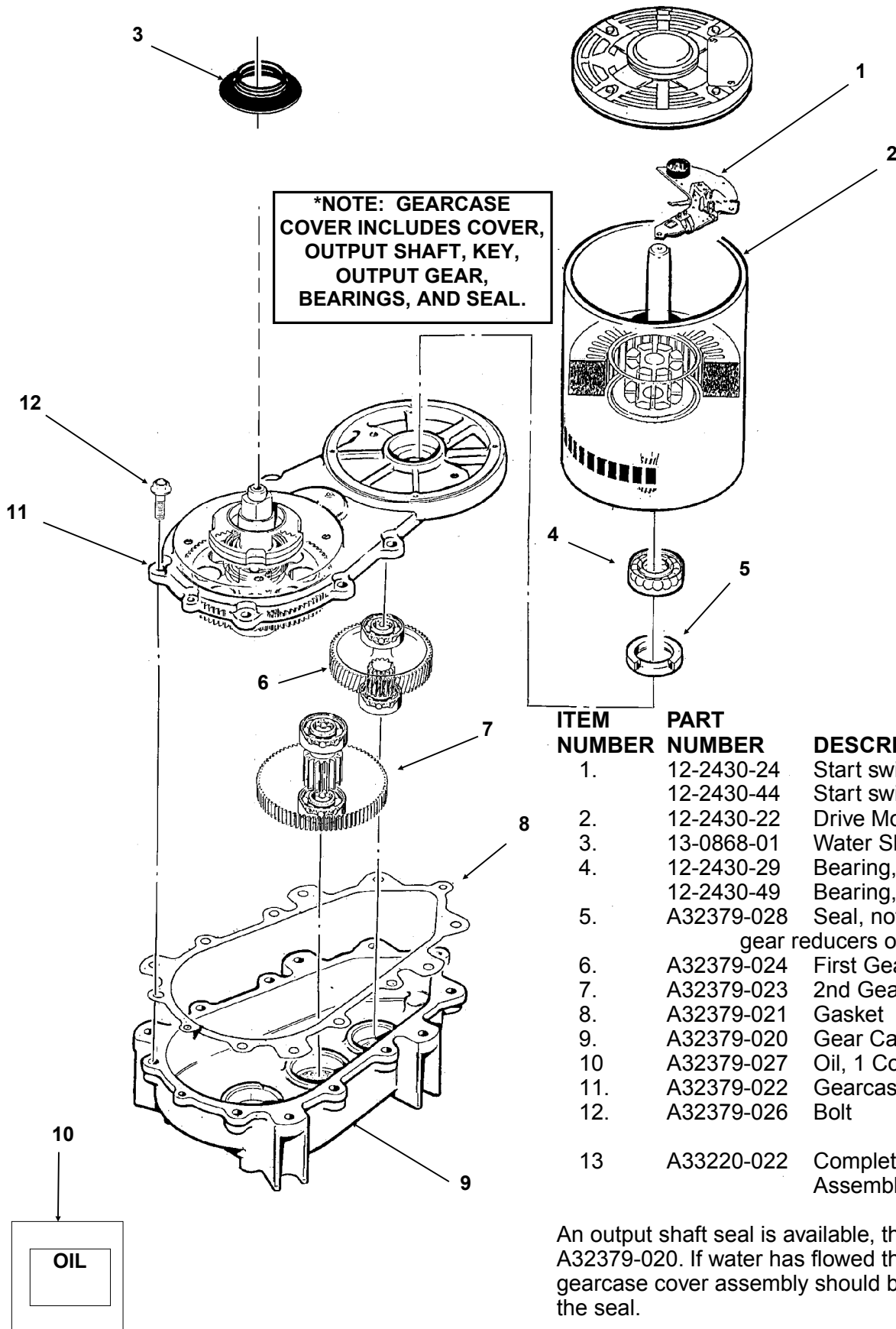
ITEM NUMBER	PART NUMBER	DESCRIPTION
1.	A32900-020	Breaker & bearing
2.	03-1544-08	Soc. head Screw
3.	13-0617-45	O-ring
4.	02-3003-01	Auger
5.	02-0929-03	Water Seal
6.	A32777-001	Ring, Water Seal
7.	A32890-020	Evaporator
8.	03-1405-52	Hex Cap Screw
9.	A34969-001	Bail clamp

**Note:** Evaporator is not available with internal parts.

ITEM NUMBER	PART NUMBER	DESCRIPTION
10.	02-2930-04	Ice Chute Cover
11.	02-2926-01	Ice Chute Body
12.	02-3268-01	Drain hose clip
13.	13-0617-52	O-ring
14.	02-3001-01	Ice Sweep
15.	02-3128-01	Breaker Cover
16.	08-0660-01	Auger Stud
17.	02-2978-01	Lip Seal
18.	03-1420-03	Cap screw
19.	A34559-020	Bearing
20.	02-2977-01	Lip Seal
21.	13-0617-54	O-Ring
22.	13-0871-01	Water Shed



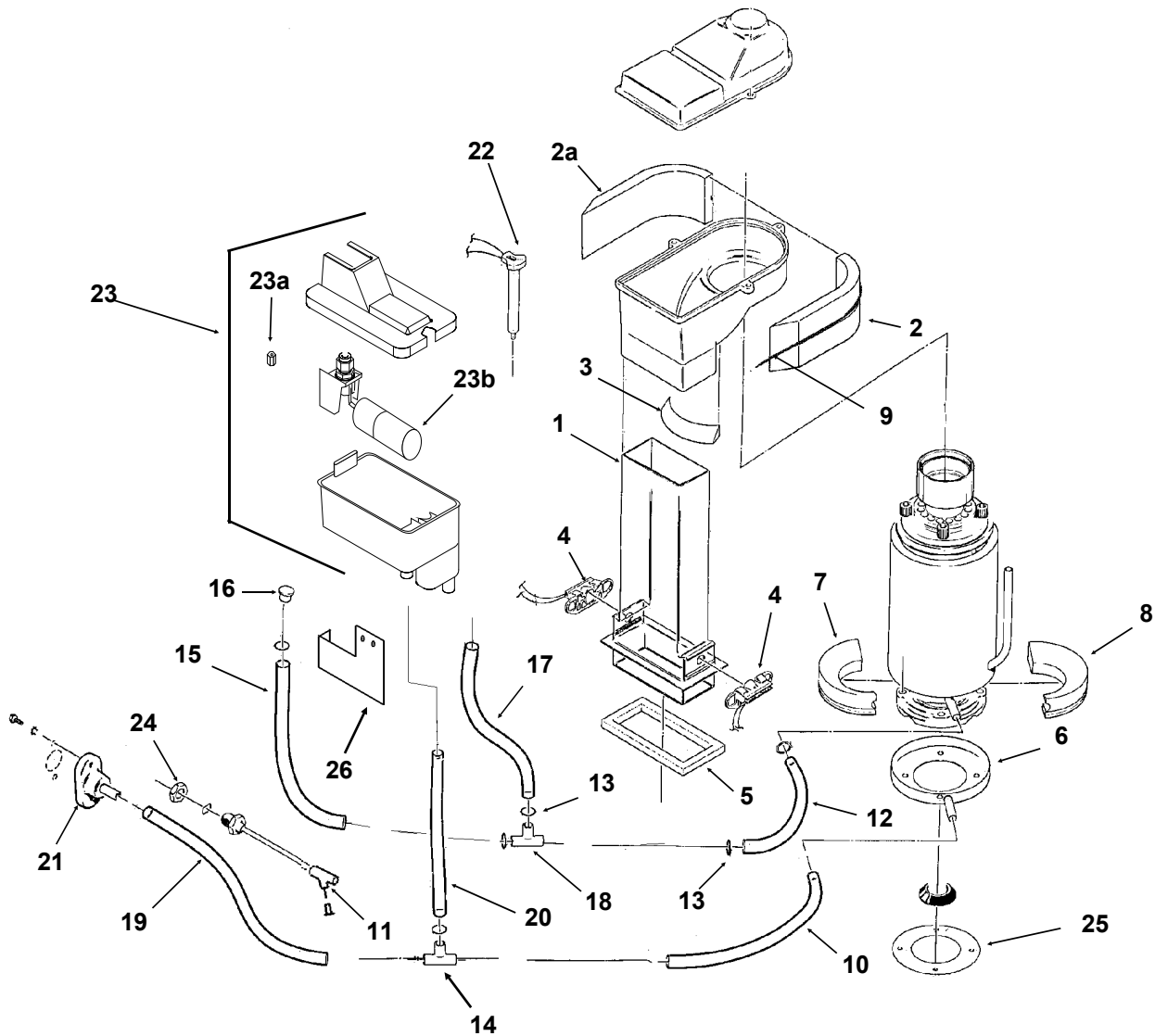
# NME1250R SERVICE PARTS GEARMOTOR



ITEM NUMBER	PART NUMBER	DESCRIPTION
1.	12-2430-24	Start switch, Emerson
	12-2430-44	Start switch, GE split phase
2.	12-2430-22	Drive Motor 208-230 Volt
3.	13-0868-01	Water Shed.
4.	12-2430-29	Bearing, Emerson
	12-2430-49	Bearing, GE split phase
5.	A32379-028	Seal, not used in replacement gear reducers or covers after 2/2000
6.	A32379-024	First Gear & Bearing
7.	A32379-023	2nd Gear & Bearing
8.	A32379-021	Gasket
9.	A32379-020	Gear Case
10.	A32379-027	Oil, 1 Container
11.	A32379-022	Gearcase Cover*
12.	A32379-026	Bolt
13.	A33220-022	Complete Gearmotor Assembly. 208-230 v.

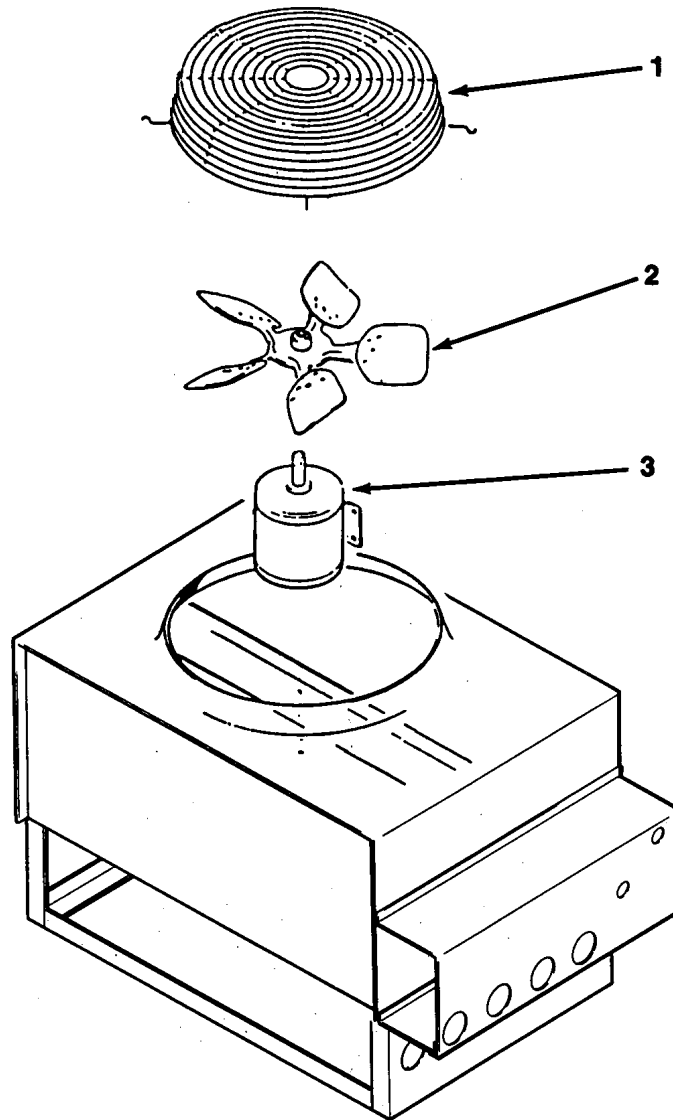
An output shaft seal is available, the part number is A32379-020. If water has flowed thru the seal, the gearcase cover assembly should be replaced, not just the seal.

# NME1250R SERVICE PARTS



ITEM NUMBER	PART NUMBER	DESCRIPTION	ITEM NUMBER	PART NUMBER	DESCRIPTION
1.	02-2929-04	Ice Chute Lower	16.	13-0840-01	Plug
2.	A32963-001	Insulation collar, top	17.	13-0674-06	Tube, 9" Order By Ft.
2a	A32963-002	Insulation collar, top	18.	16-0670-02	Tee
3.	A33102-001	Insulation Collar Inside	19.	13-0079-03	Tube, 18" Order By Ft.
4.	A33117-020	Ice level sensor set	20.	13-0079-03	Tube, 12" Order By Ft.
5.	A32930-001	Chute Gasket	21.	A32282-004	Drain
6.	A32050-001	Drip Pan	22.	A33101-022	Thermo Probe
7.	A32962-001	Insulation Collar Bottom	23.	02-3266-20	Float & Reservoir complete
8.	A32962-002	Insulation Collar Bottom	23a	02-3266-21	Seat/plunger
9.	A35419-020	Strap kit	23b	02-3266-22	Float valve
10.	13-0079-03	Hose 9" Order By Ft.	24.	03-1394-01	Pal Nut
11.	16-0162-00	Strainer	25.	13-0704-00	Drip pan gasket
12.	A33203-001	Preformed Hose	26.	.A35956-001	Reservoir bracket
13.	02-2814-08	Hose Clamp			
14.	16-0670-01	Tee			
15.	13-0674-06	Tube, 11" Order By Ft.			

# NME1250R SERVICE PARTS REMOTE CONDENSER



### RCE651-32A or RCE652-32A

ITEM NUMBER	PART NUMBER	DESCRIPTION
1.	02-2618-01	Fan Guard
2.	18-6304-01	Fan Blade
3.	18-5301-01	Fan Motor

For precharged line set:

16-0701-02	Female coupling (3/8")
16-0701-10	Female coupling (1/2")

### ERC201 or ERC402

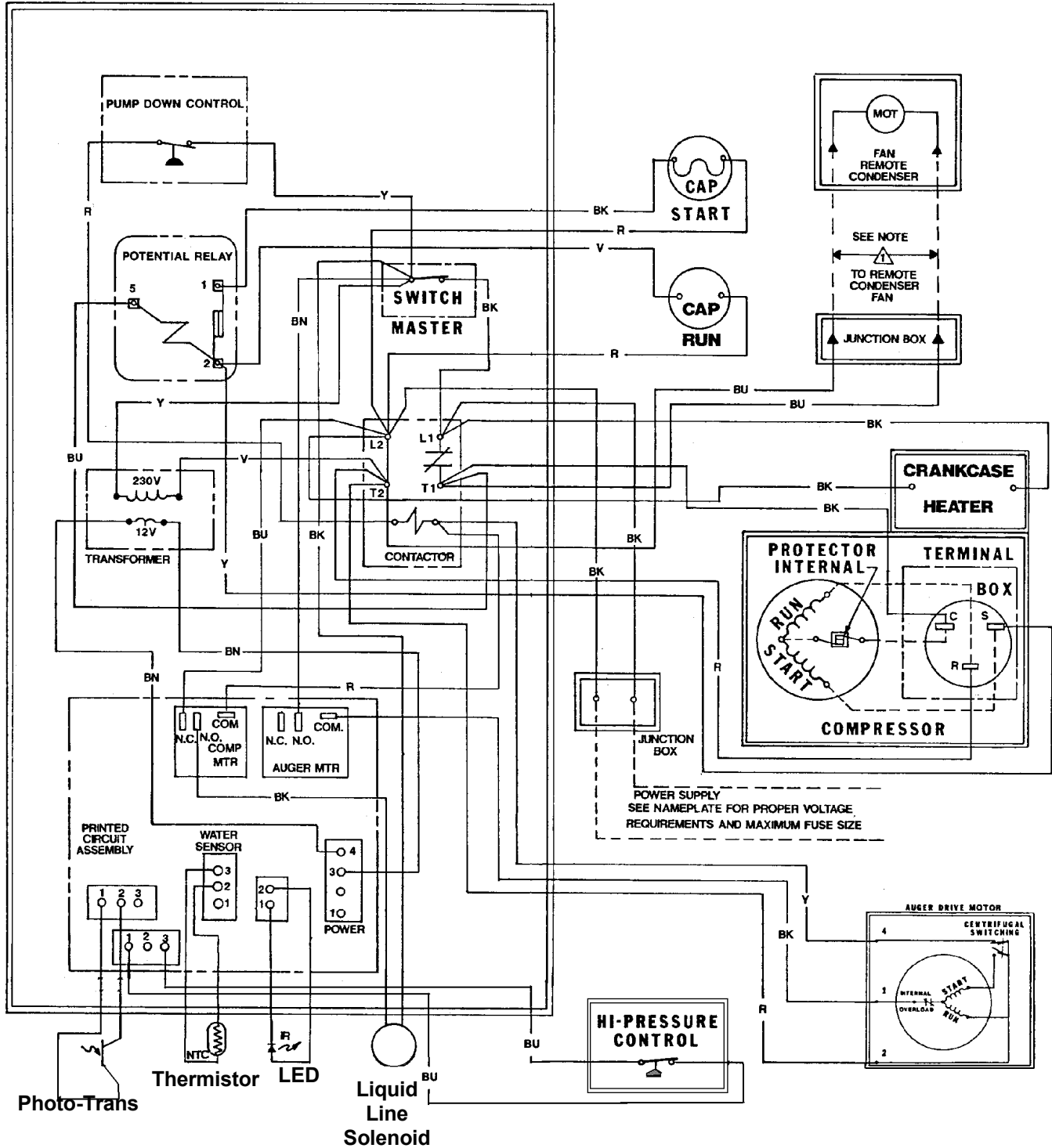
ITEM NUMBER	PART NUMBER	DESCRIPTION
1	02-3575-01	Fan guard
2	18-8800-01	Fan blade
3	18-8796-32	Fan motor



# NME1250R SERVICE PARTS

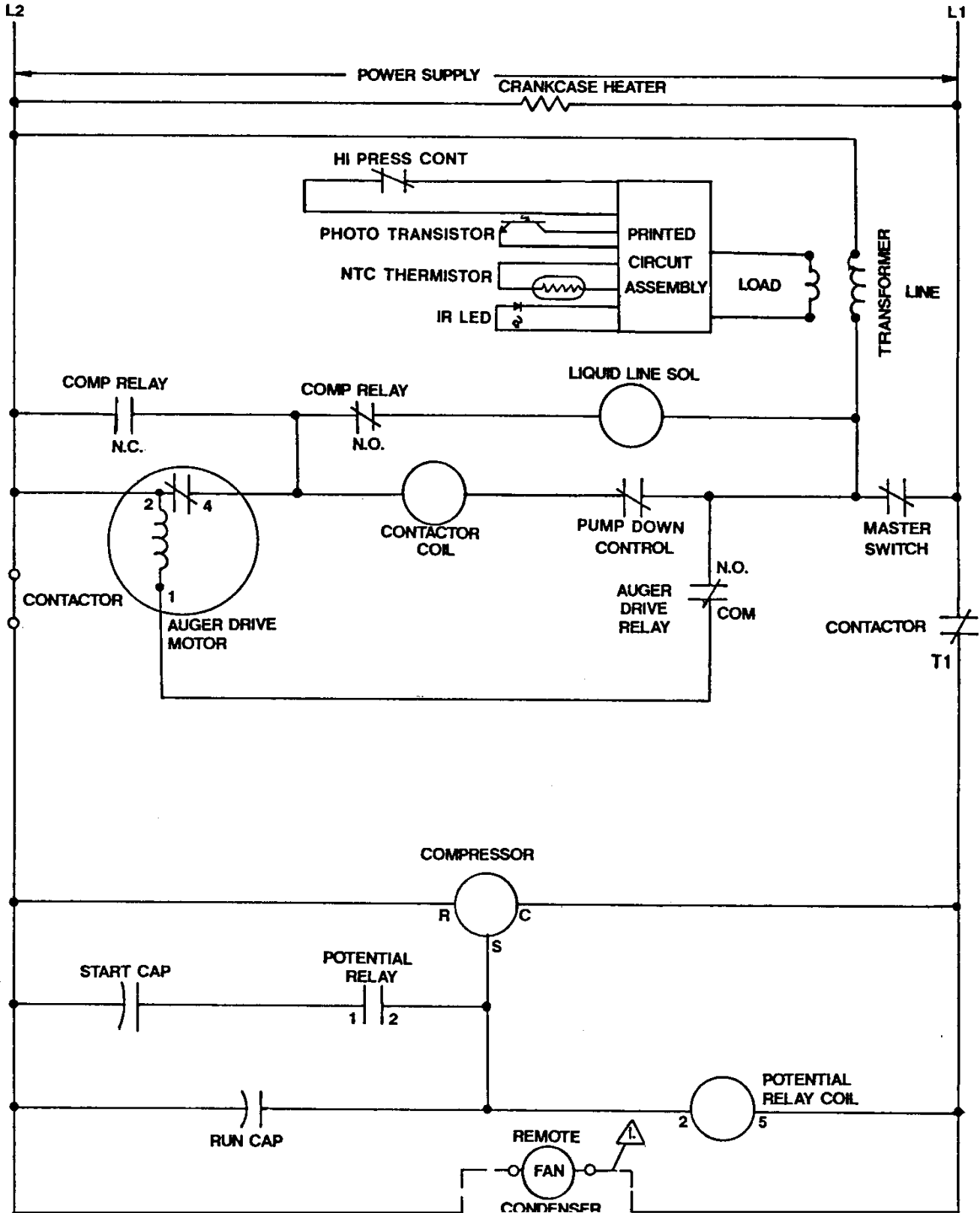
## Component Layout Diagram

208-230/60/1



# NME1250R SERVICE PARTS

## Schematic Diagram



**USE COPPER CONDUCTORS ONLY THIS UNIT MUST BE GROUNDED**

All Controls Shown in Normal Ice Making Mode

Note: Dashed lines indicate field wiring which must be installed in accordance with the National Electric Code  
Using a Minimum of 14 ga. awg. wire.