

RS160 and RS220 SERVICE PARTS

This parts list contains the parts available for the RS160 and the RS220 ice and soda dispensers. These two models share many components, but not all.

Check the model number, and refer to the correct column list.

Options to the basic model of color, a lighted sign, or valve quantity & brand add to the details that may alter a part number.

Check very carefully that the correct part is ordered.

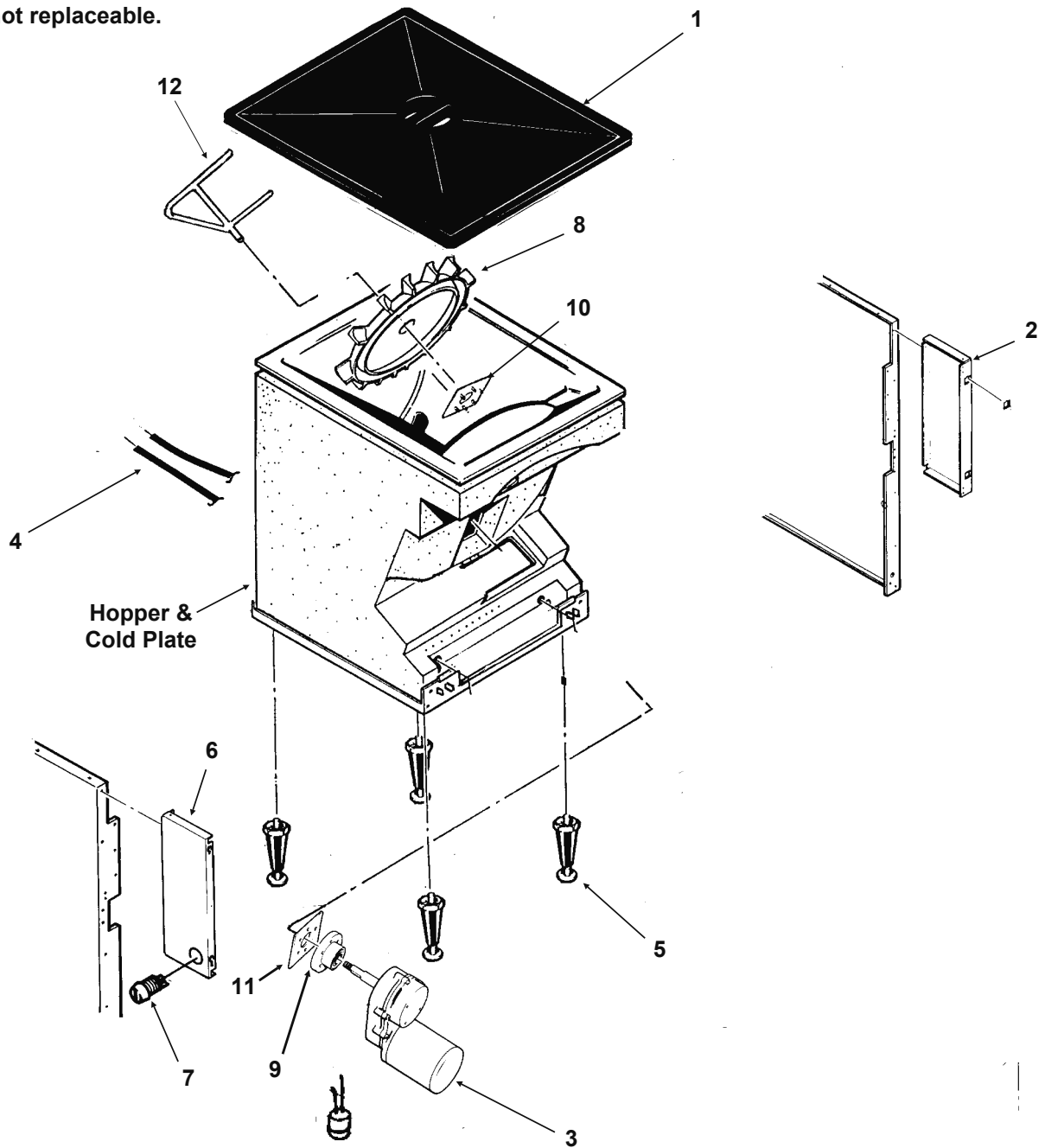
TABLE OF CONTENTS

| | |
|--|----|
| Cabinet | 2 |
| Cabinet | 3 |
| Cabinet Front | 4 |
| Cabinet Front | 5 |
| Beverage Valves | 6 |
| Control Box | 7 |
| ice Door And Solenoid Assembly | 8 |
| Schematic Diagram | 9 |
| Component Layout Diagram | 10 |
| Schematic Diagram For Dole Fast Flow Valves | 11 |
| Component Layout Diagram For Dole Fast Flow Valves | 12 |

RS160 and RS220 SERVICE PARTS

Cabinet

Note: The hopper - cold plate assembly and/or the cabinet are not replaceable.



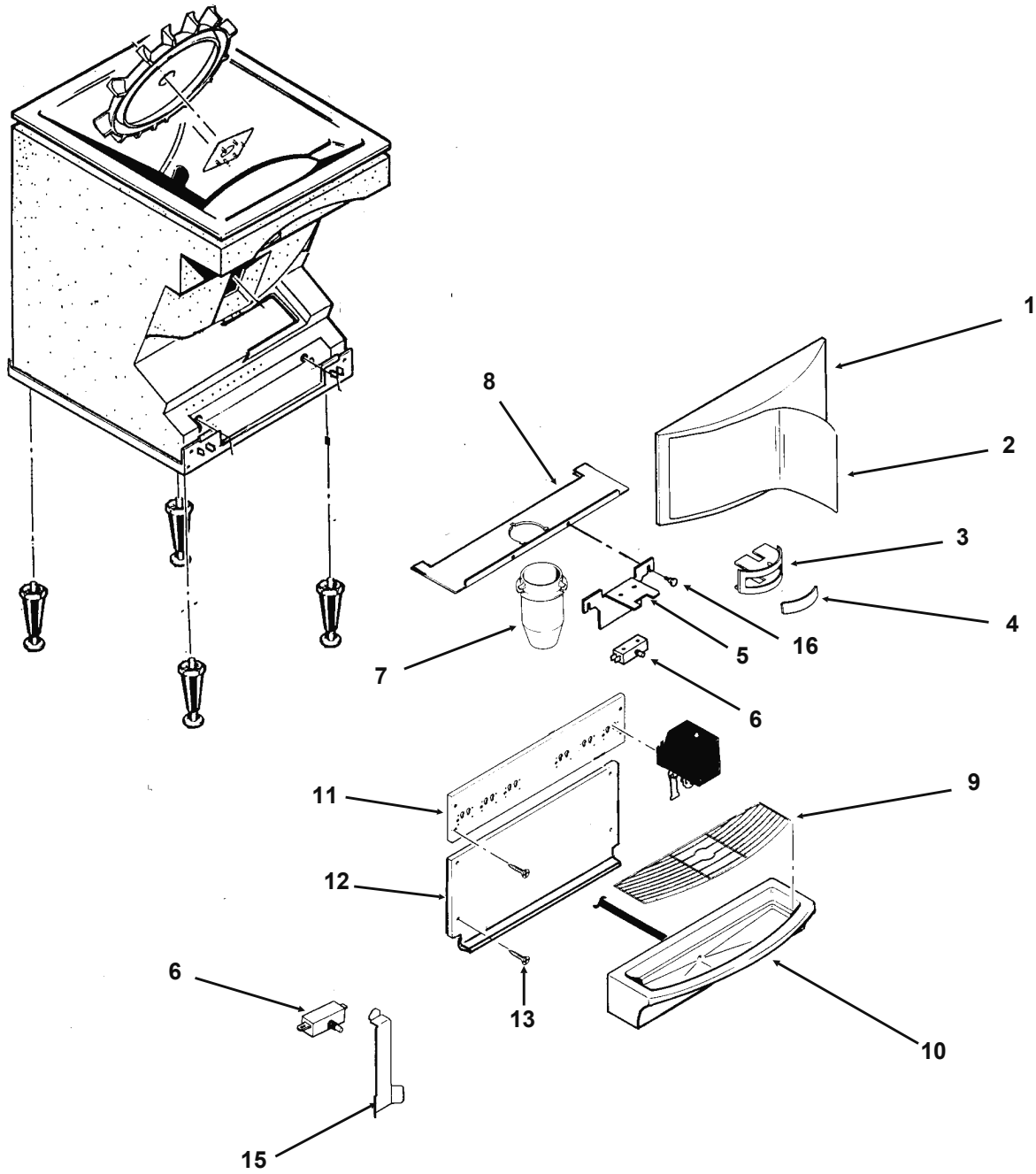
RS160 and RS220 SERVICE PARTS

Cabinet

| ITEM NUMBER | RS160 PART NUMBER | RS220 PART NUMBER | DESCRIPTION |
|------------------------|----------------------------------|----------------------------------|---|
| 1 | A36843-002 | A36843-004 | Black lid |
| | A36843-001 | A36843-003 | Gray lid |
| 2 | A36844-003 | A36844-003 | Side panel extension, painted |
| | A35844-004 | A36844-004 | Side panel extension, stainless steel |
| 3 | 12-2369-01 | 12-2369-01 | Gearmotor Assembly |
| 4 | A36847-001 | A36847-001 | Drain hose |
| 5 | 02-3124-01 | 02-3124-01 | Leg kit |
| 6 | A36844-001 | A36844-001 | Side panel extension, painted |
| | A36844-002 | A36844-002 | Side panel extension, stainless steel |
| 7 | 12-2391-01 | 12-2391-01 | Switch & Lock & Key |
| 8 | 02-3040-01 | 02-3040-01 | Rotor |
| 9 | A34760-001 | A34760-001 | Hub Assembly (includes bearing 02-3075-01 and seal 02-3065-01) |
| 10 | A34810-001 | A34810-001 | Mounting plate, hub |
| 11 | A34817-001 | A34817-001 | Gearmotor plate |
| 12 | 02-3925-01 | A36846-002 | Sweep Arm |

RS160 and RS220 SERVICE PARTS

CABINET FRONT



RS160 and RS220 SERVICE PARTS

CABINET FRONT

| ITEM NUMBER | RS160 PART NUMBER | RS220 PART NUMBER | DESCRIPTION |
|----------------|-------------------------|-------------------------|---|
| 1 | A36848-004 | A36848-008 | Upper front frame, black, for lever |
| | A36848-003 | A36848-007 | Upper front frame, gray, for lever |
| | A36848-002 | A36848-006 | Upper front frame, black, for pushbutton |
| | A36848-001 | A36848-005 | Upper front frame, gray, for pushbutton |
| | A36849-001 | A36849-001 | Screws for frame |
| 2 | 15-0752-01 | 15-0754-01 | Merch. sign for lighted panel, coke |
| | 15-0752-02 | 15-0754-02 | Merch. sign for lighted panel, pepsi |
| | 15-0752-03 | 15-0754-03 | Merch. sign for lighted panel, generic RS |
| 3 | 02-3071-01 | 02-3071-01 | Bezel for Ice Switch Button |
| 4 | 02-3072-01 | 02-3072-01 | Button |
| | 02-3096-02 | 02-3096-02 | Return spring for push button |
| 5 | A36850-001 | A36850-001 | Switch bracket for push button models |
| 6 | 12-1570-00 | 12-1570-00 | Microswitch - for push button |
| | 12-2731-01 | 12-2731-01 | Microswitch - for lever |
| 7 | 02-3068-01 | 02-3068-01 | Ice Chute |
| | 02-3068-02 | 02-3068-02 | Ice Chute when using Dole valves |
| 8 | A34797-001 | A34798-001 | Panel for ice chute |
| 9 | A36852-001 | A36852-002 | Grill/cup rest |
| 10 | A36851-001 | A36851-003 | Black Sink |
| | A36851-002 | A36851-004 | Gray sink |
| 11 | A34794-001 | A34795-001 | Valve panel - lever model w/6 non-Booth valves |
| | | A34795-005 | Valve panel - lever model w/8 non-Booth valves |
| | A34794-002 | A34795-002 | Valve panel - push btn model w/6 non-Booth valves |
| | | A34795-006 | Valve panel - push btn model w/8 non-Booth valves |
| | A34794-003 | A34795-003 | Valve panel - lever model with 6 Booth valves |
| | | A34795-007 | Valve panel - lever model with 8 Booth valves |
| | A34794-004 | A34795-004 | Valve panel - push button model w/6 Booth valves |
| | | A34795-008 | Valve panel - push button model w/8 Booth valves |
| 12 | A36854-001 | A36854-003 | Splash panel for post mix models |
| | A36854-002 | A36854-004 | Splash panel for pre mix models |
| 13 | 03-1419-22 | 03-1419-22 | Screw |
| 14 | 12-2372-01 | 12-2372-01 | Boot for microswitch |
| 15 | A34806-001 | A34806-001 | Lever "Push for Ice" lever models only |
| 16 | 03-0727-06 | 03-0727-06 | Thumbscrew |

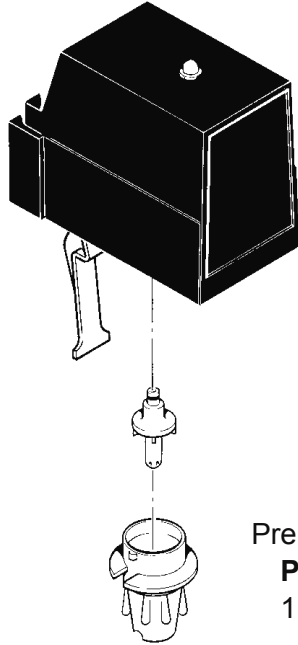
Not Shown:

| | | | |
|----|------------|------------|--|
| 17 | A36886-001 | A36886-002 | Access cover for optional cuber adapter kits |
|----|------------|------------|--|



RS160 and RS220 SERVICE PARTS

BEVERAGE VALVES



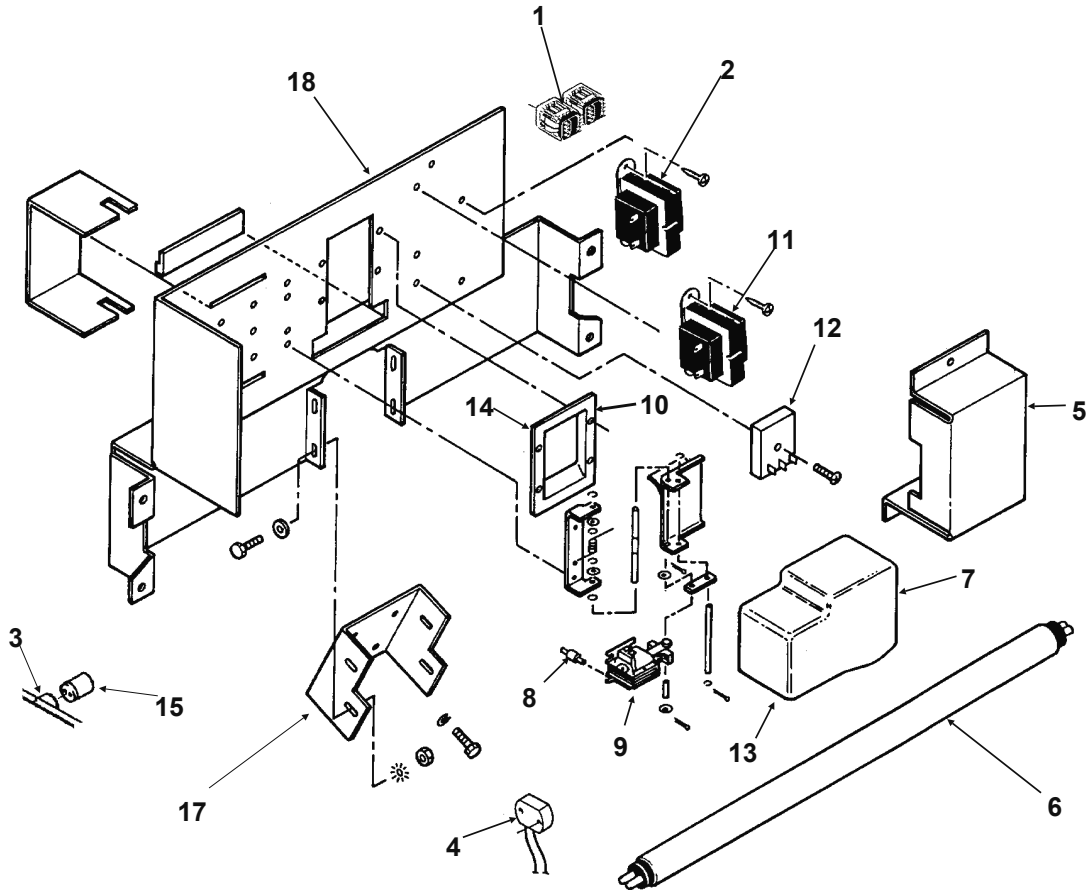
Pre Mix Valves:
Part Number
 11-0468-01

Description
 Pre-mix valve (Capre). Post Mix listed below

| Post Mix Valve Part Number | Brand | Standard Flow | Fast Flow | Soda Control | Water Disp | Lever | Push Button |
|----------------------------|-----------|---------------|-----------|---------------|------------|-------|-------------|
| 11-0462-01 | Dole | x | | | | x | |
| 11-0452-01 | Dole | x | | | | | x |
| 11-0453-01 | Dole | | x | | | x | |
| 11-0455-01 | Dole | | x | | | | x |
| 11-0451-01 | Dole | x | | | x | | |
| 11-0454-01 | Dole | | x | | x | | |
| A33171-001 | Cornelius | x | | | | x | |
| 11-0457-01 | Cornelius | | x | | | x | |
| 11-0456-01 | Cornelius | x | | | | | x |
| 11-0459-01 | Cornelius | | x | | | | x |
| A33170-001 | Cornelius | x | | | x | | |
| 11-0458-01 | Cornelius | | x | | x | | |
| 11-0522-01 | Cornelius | | x | | x | | x |
| A34106-001 | Booth | x | | | | x | |
| 11-0460-01 | Booth | | x | | | x | |
| A34107-001 | Booth | x | | | x | | |
| 11-0461-01 | Booth | | x | | x | | |
| 11-0469-01 | McCann | x | | Metering stem | | x | |
| 11-0469-03 | McCann | | x | Mechanical | | x | |
| 11-0469-05 | McCann | x | | Flow washer | | x | |
| 11-0469-09 | McCann | x | | Metering stem | | | x |
| 11-0469-11 | McCann | | x | Mechanical | | | x |
| 11-0469-15 | McCann | | x | Mechanical | | x | |
| 11-0511-04 | Lancer | | x | | x | | x |
| 11-0511-03 | Lancer | | x | | | | x |
| 11-0511-02 | Lancer | | x | | x | x | |
| 11-0511-01 | Lancer | | x | | | x | |

RS160 and RS220 SERVICE PARTS

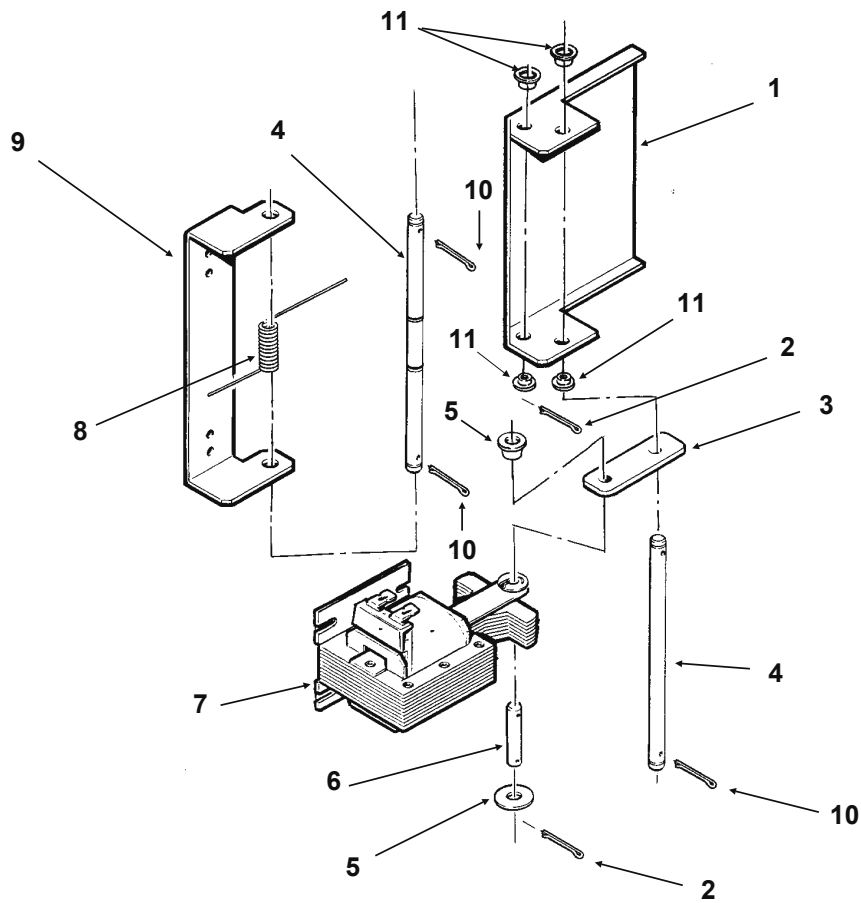
Control Box



| ITEM NUMBER | PART NUMBER | DESCRIPTION |
|-------------|-------------|--|
| 1 | 12-2483-02 | Relay |
| 2 | 12-2390-01 | Transformer |
| 3 | 12-2395-01 | Starter Socket |
| 4 | 12-2385-01 | Bulb Holder |
| 5 | A36853-001 | Control Box Cover for RS160 |
| | A36853-002 | Control Box Cover for RS220 |
| 6 | 12-2377-01 | IS160 Fluorescent Tube (15 watt -18") |
| | 12-2377-02 | IS220 Fluorescent Tube (16 watt - 26") |
| 7 | 02-3067-01 | Cover |
| 8 | 13-0882-01 | Rubber Mounts |
| 9 | A34920-001 | Solenoid Cover (not shown) |
| 10 | 13-0595-00 | Door Gasket, 5.5" |
| 11 | 12-2390-01 | Transformer |
| 12 | 12-2371-01 | Recycling Timer |
| 13 | 02-3411-01 | Thumb Screw |
| 14 | 02-3188-20 | Spout Adaptor Assy. kit |
| 15 | 12-2386-01 | Starter |
| 16 | 12-2484-01 | Ballast |
| 17 | 02-3786-01 | Gearmotor bracket |
| 18 | A37756-001 | Motor bracket |

RS160 and RS220 SERVICE PARTS

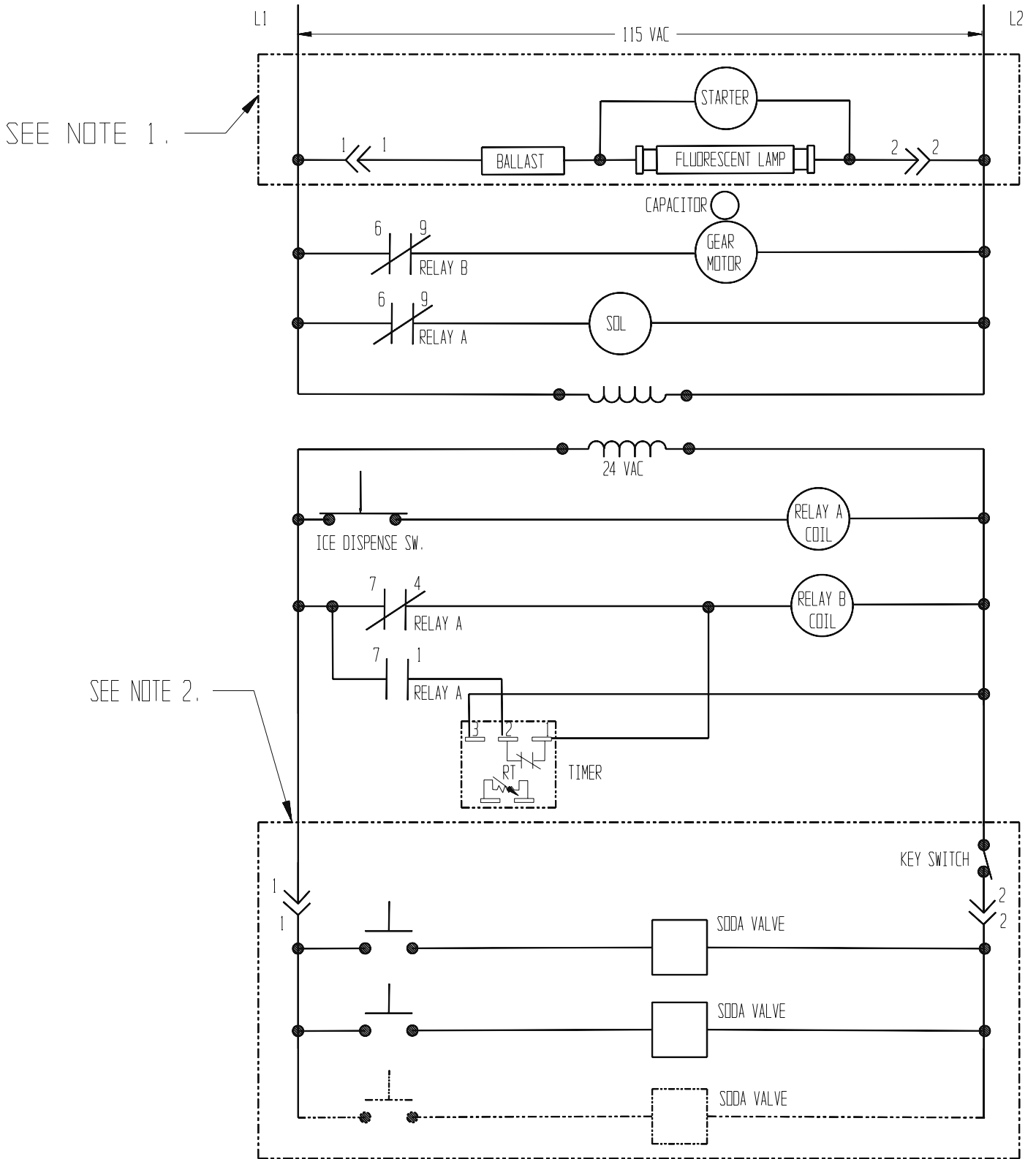
Ice Door And Solenoid Assembly



| ITEM NUMBER | PART NUMBER | DESCRIPTION |
|-------------|-------------|---------------|
| 1 | A34801-001 | Ice Door |
| 2 | 03-0396-01 | Cotter Pin |
| 3 | 02-3089-02 | Solenoid Link |
| 4 | 02-3088-01 | Long axle |
| 5 | 03-1407-02 | Flat Washer |
| 6 | A32685-001 | Axle, Linkage |
| 7 | A32683-001 | Solenoid |
| 8 | A32690-001 | Door Spring |
| 9 | A34802-001 | Door Hinge |
| 10 | 03-0396-08 | Cotter Pin |
| 11 | 02-3187-01 | Bushing |

RS160 and RS220 SERVICE PARTS

Schematic Diagram



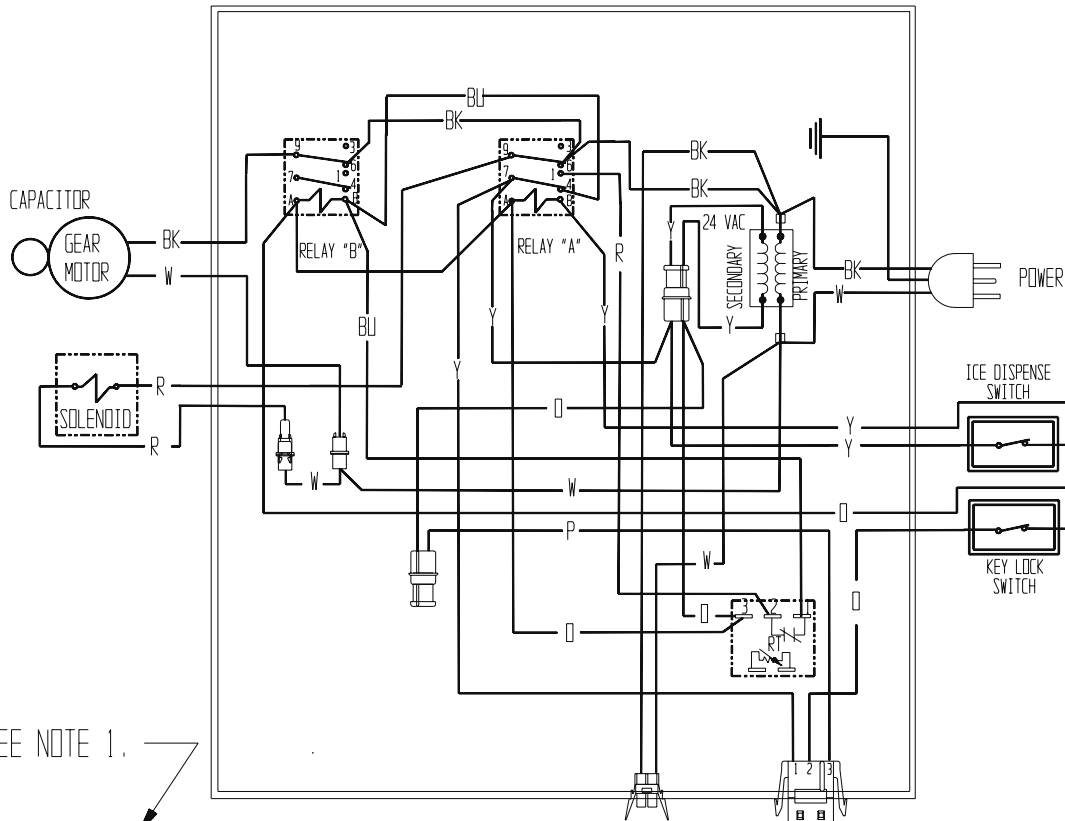
USE COPPER CONDUCTORS ONLY THIS UNIT MUST BE GROUNDED

RS160 and RS220 SERVICE PARTS

Component Layout Diagram

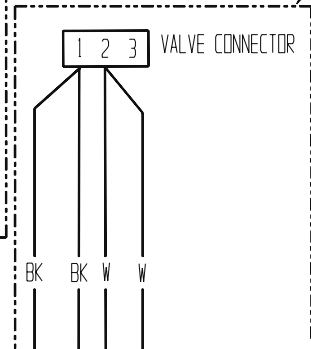
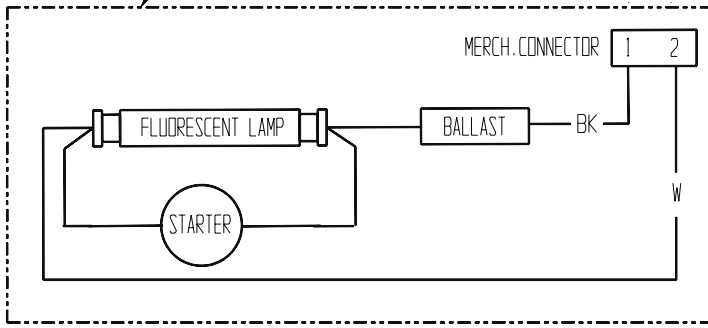
A34905-001

SEE NAMEPLATE FOR PROPER VOLTAGE REQUIREMENTS AND MAXIMUM FUSE SIZE.



SEE NOTE 1.

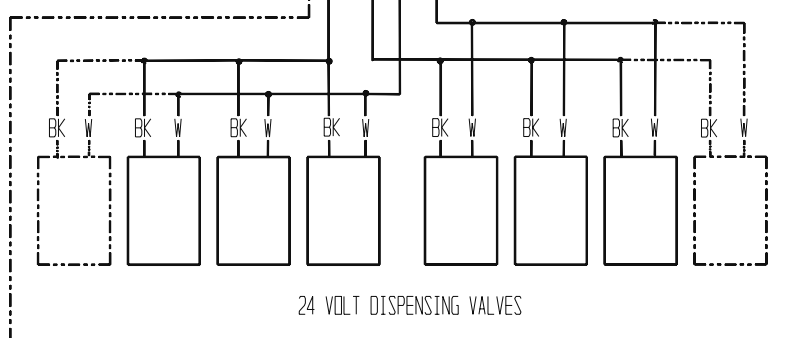
SEE NOTE #2



ALL VALVE SCHEMATICS ARE TYPICAL.

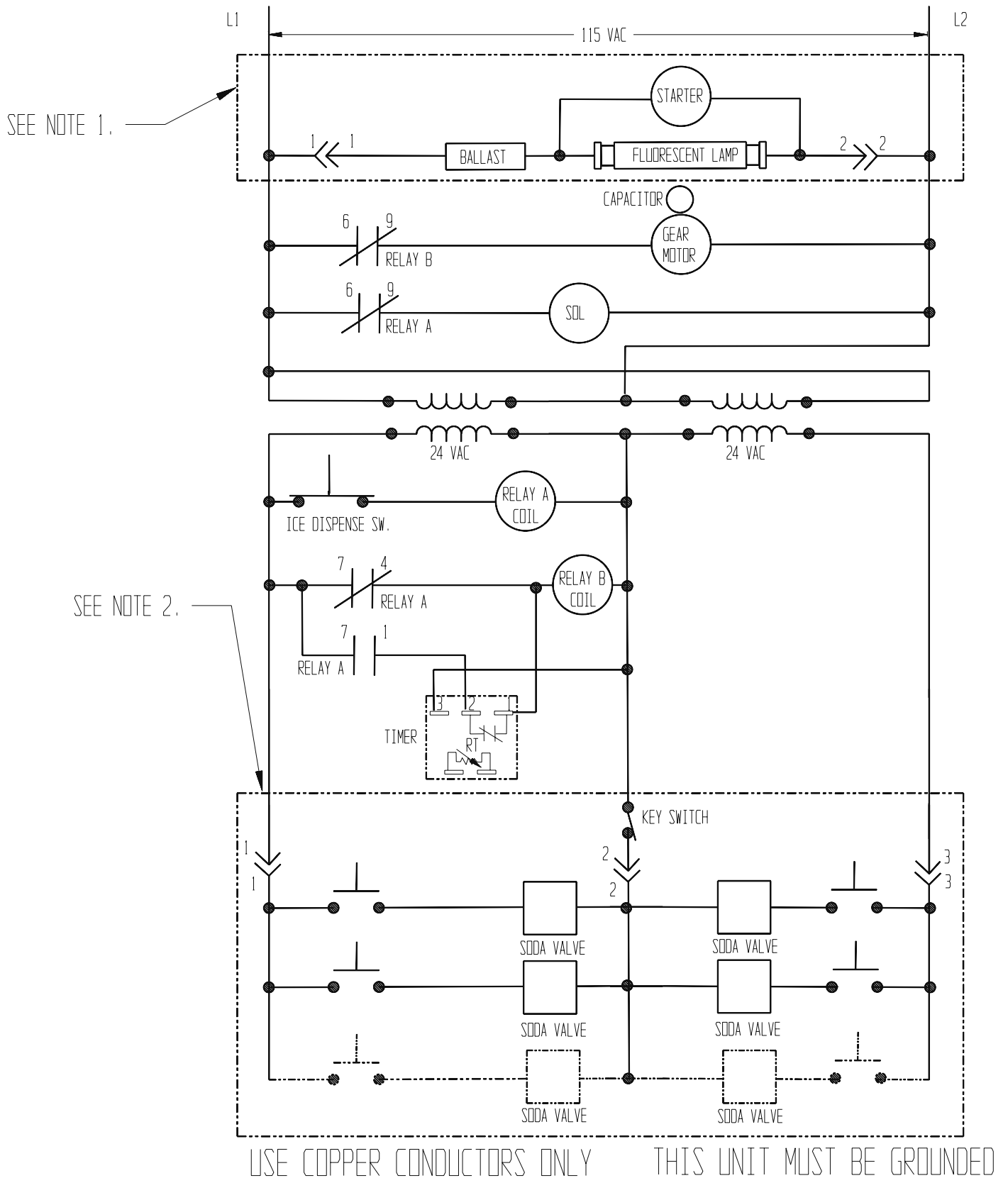
NOTES:

2. APPLICABLE ONLY FOR UNITS WITH SODA DISPENSING VALVES.



RS160 and RS220 SERVICE PARTS

Schematic Diagram for Dole Fast Flow Valves

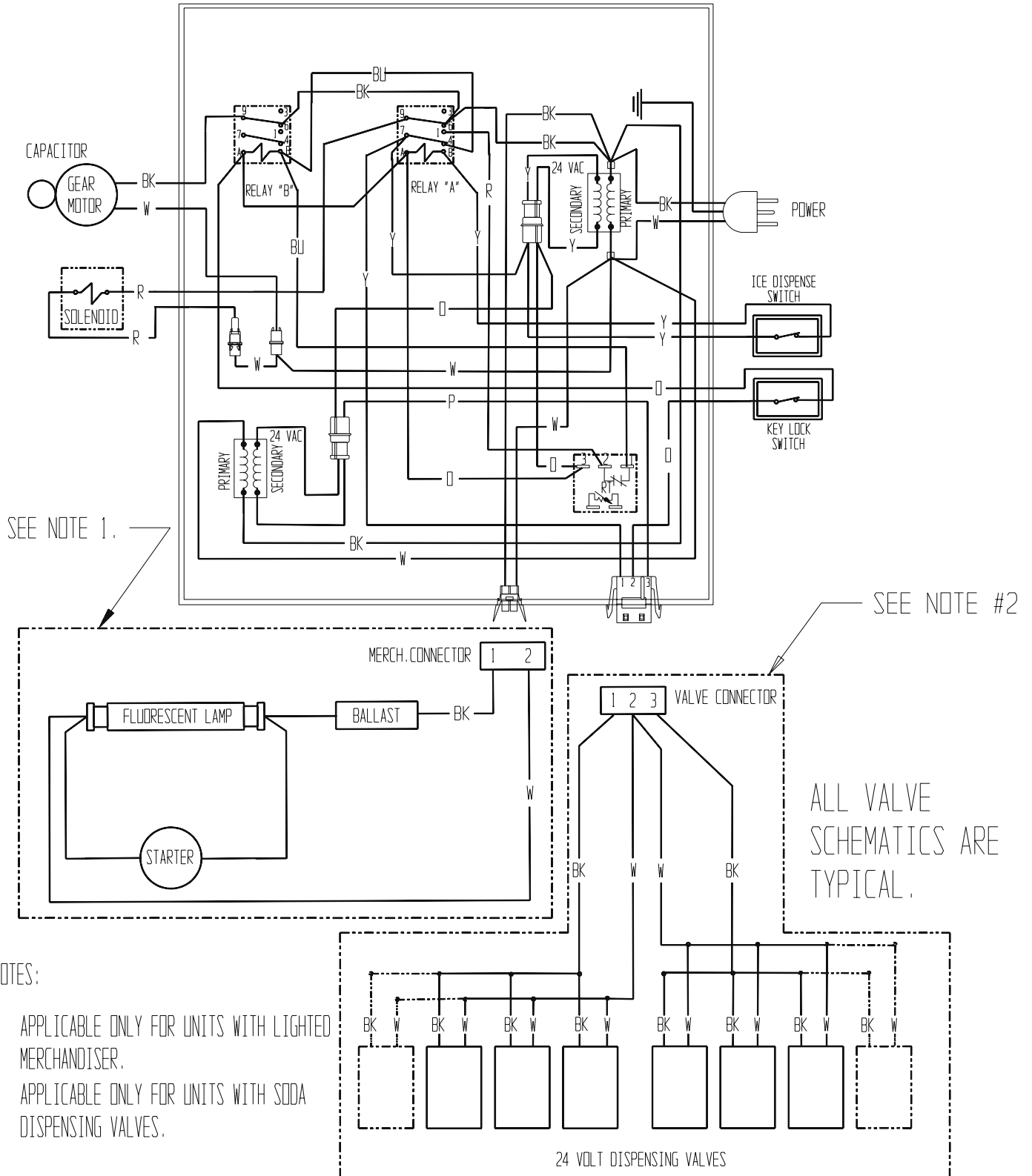


RS160 and RS220 SERVICE PARTS

Component Layout Diagram For Dole Fast Flow Valves

A34906-001

SEE NAMEPLATE FOR PROPER VOLTAGE REQUIREMENTS AND MAXIMUM FUSE SIZE.



NOTES:

1. APPLICABLE ONLY FOR UNITS WITH LIGHTED MERCHANDISER.
2. APPLICABLE ONLY FOR UNITS WITH SODA DISPENSING VALVES.

RS160 and RS220 SERVICE PARTS