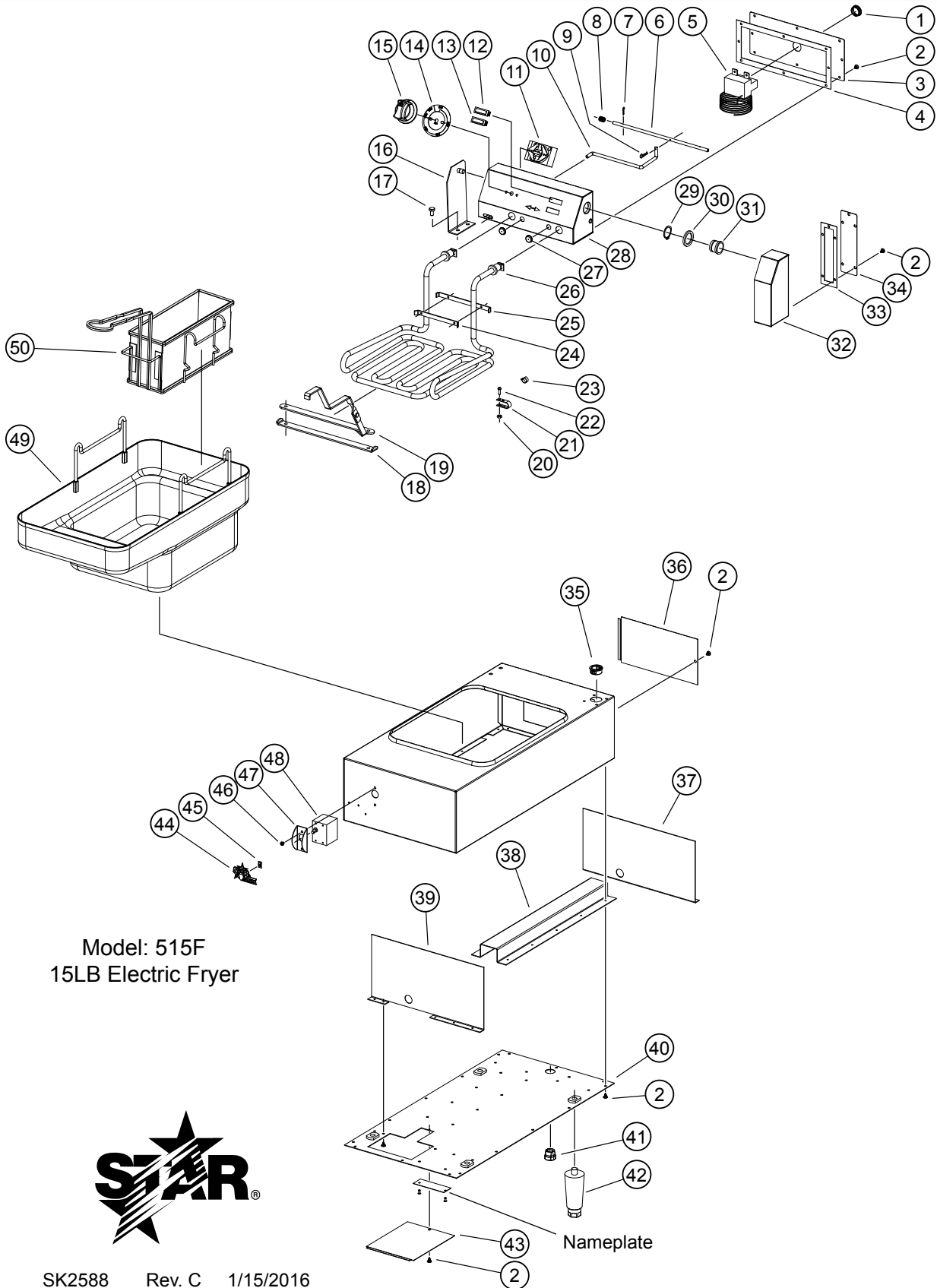


EXPLODED VIEW: 515F & F15 15lb COUNTERTOP ELECTRIC FRYER



Model: 515F
15LB Electric Fryer



SK2588 Rev. C 1/15/2016

Nameplate

PARTS LIST: 515F & 515EF

Model: 515F, 515EF Electric Countertop Deep Fat Fryer				
Fig. No.	Part Number	Quantity	Description	Application
1	2K-70229	1	BUSHING SHORTY HEYCO 2850	
2	2C-1646	16	SCREW #8X3/8 AB THP STL	
3	E1-Y5087	1	BACK-ELEMENT HOUSING	
4	2I-Y5097	1	GASKET-ELEMENT HOUSING	
5	2T-Y1668	1	HI-LIMIT/SAFETY T-STAT	
6	2A-Y5109	1	ROD-CATCH	
7	2A-7435	1	PIN-COTTER 1/16DX3/8 STL	
8	2P-7969	1	SPRING 11/321DX7/8LG#18	
9	2A-5401	1	PIN-COTTER 3/32DX3/4 SS	
10	2A-Y5108	1	ROD-CATCH RELEASE	
11	2T-Z7208	1	THERMOSTAT 375F	
12	E1-116313	1	SIGNAL LITE ASSEM-HEATING	
13	E1-116314	1	SIGNAL LITE ASSEM-POWER	
14	2M-Z15483	1	LABEL, KNOB ELEC. FRYER	
15	E1-Z15707	1	KNOB ASSEMBLY LG E-T KEYR	
16	E1-530007	1	LH HOUSING SUPPORT ASSY	
17	2C-Y1221	2	BOLT 1/4-20X1/2 HEX STL	
18	E1-Y1669	1	CLAMP-ELEMENT UPPER	
19	2R-115719	1	HANDLE BRKT ASSY-115 FRYR	
20	2C-2556	4	NUT 8-32 HEX STL NP	
21	E1-7363	4	CLAMP-THERMOSTAT BULB	
22	2C-1494	4	SCREW 8-32X1/2 RHP STL NP	
23	2P-5737	6	CLIP- CAPILLARY TUBE	
24	E1-Y1890	1	BRACE-ELEMENT (SMALL)	
25	E1-Y1889	1	BRACE-ELEMENT	
26	2N-Y5169	1	ELEMENT-240V 4600W	515EF
	2N-Y5168		ELEMENT-240V 5750W	515F
27	2I-5659	2	9061 GROMMET DRILL#55	
28	E1-515014	1	ELEMENT HOUSING ASSY	
29	2C-Y5094	1	RING-RETAINING-1.000 ID	
30	2I-Y5088	1	GASKET-PIVOT 1.37 X 1.4	
31	2A-Y5090	1	BUSHING PIVOT - PLATED	
32	E1-515005	1	WIRE HOUSING ASSEMBLY	
33	2I-Y5095	1	GASKET-WIRE HOUSING	
34	E1-Y5086	1	BACK-WIRE HOUSING	
35	2K-Y5093	1	BUSHING-SNAP #SB-1000-12	

2M-Z15999 Owners Manual for Countertop 15LB Electronic Fryer

PARTS LIST: 515F & 515EF continued

Model: 515F, 515EF Electric Countertop Deep Fat Fryer				
Fig. No.	Part Number	Quantity	Description	Application
36	E1-Y5084	1	PANEL-INSPECTION	
37	E1-Y5282	1	REAR DIVIDER	
38	E1-Y5284	1	WIRE CHANNEL	
39	E1-Y5283	1	FRONT DIVIDER	
40	E1-515017	1	BOTTOM ASSY 515ED	
41	2K-Y6764	1	BUSHING - STRAIN RELIEF	
42	2A-Z5942	4	FOOT, 1/2-13 X 4"L.	
43	E1-Z3758	1	PANEL-INSPECTION	
44	2M-Z15804	1	LOGO, STAR-MAX	515F, 515EF
45	2C-8477	3	CLIP .125 PO STL PHOS	
46	2C-200067	2	SCREW 6-32X1/4 THP SS	
47	E1-Z15962	1	SWITCH GUARD SINGLE SST	
48	2E-Y5166	1	SWITCH-2 POLE 30 AMP	
49	E1-115714	1	KETTLE ASSEMBLY COMPLETE	
50	2B-115774	1	BASKET, TWIN, LEFT HANGER	
	2B-115775	1	BASKET, TWIN, RIGHT HANGER	
	2B-Y8847	Optional	BASKET-LEFT (8" WIDE) (OPTIONAL)	
	2B-Y8846		BASKET-RIGHT (8" WIDE) (OPTIONAL)	
NI	2M-Y5287	1	WIRE DIAGRAM LABEL	
NI	2M-Z8943	1	SIGN-FRYER WARNINGS	
NI	E3-301044	1	CORD ASSY 12-3 SJTO 30A	