

Model: CG28IE & GR28IE
 SK2568, Rev. -, 2/23/2012

Model: CG28IE & GR28IE, 28" ProMax Grills				
Fig No	Part No	Description	Qty	Application
1	2C-Z2992	BOLT 1/4-20X1 PHP STL NP	4	
2	2V-Z11395	HANDLE	2	
3	2B-Z14019	ARM, STANDARD 45 DEG.	4	
4	2C-1523	SCREW 1/4-20X3/4 SS RHP	8	
5	2C-08-07-0262	WASHER, SS 1/4 INT - LOCK	24	
6	2A-Z11676	CHAIN LINK, 50SS	4	
7	2C-1516	SCREW 10-24X1 STL RH NP	4	
8	2C-6260	WASHER #10 INT STL NP	12	
9	2A-Z12620	SPACER BLOCK	4	
10	2F-Z11945	BRACKET LT, ROLLER MOUNT	2	
11	2C-Z13975	CAM FOLLOWER ASSY	8	
12	2V-Z11388	LINK ASSY BASE, TOP	4	
13	2F-Z11946	BRACKET RT, ROLLER MOUNT	2	
14	2C-1522	SCREW 1/4-20X.5 STL R.H.	12	
15	2E-Z3768	LOCKNUT, CONDUIT, 1/2 IN.	2	
16	D9-Z11751	PLATE, TOP CONDUIT KEEPER	2	
17	2C-Y3999	RIVET 3/16X.44 POP AL SM	4	
18	2E-Z11699	CONDUIT, 1.2' 90 DEG	2	
19	D9-Z14020	TOP HOUSING,LEFT,14"	1	
	D9-Z14488	TOP HOUSING,RT,14" SINGLE	1	
20	2C-1512	SCREW 10-24X3/8 RHP STL	14	
21	2C-Z2893	NUT 10-24 HEX STL ZP	16	
22	D9-Z13099	BRACKET, INSULATION	4	
23	D9-Z2888	INSULATION - 14"	2	
24	D9-Z2075	TOP ELEMENT/INS. PLATE/14	2	
25	D9-GR0563	ELMNT(MAKE FROM 2N-Z2391)	2	
26	2C-08-07-0285	SCREW 10-24X3/4X3/8 TYPE	16	
27	2F-Z1948	CASTING,SM, TOP,IRON-14	2	GR28IE
	2F-Z1950	CASTING,GR.TOP,IRON-14		CG28IE
28	2C-1827	WASHER #10 EXT STL NP	6	
29	2C-1515	SCREW 10-24X .75 ST RH NP	4	
30	2C-2853	SCREW #8X5/8 A THP STL	2	
31	2C-Z3350	HALF CLAMP .188 D STL ZP	4	
32	2E-Z3278	RTD PROBE - 48" LONG WIRE	2	
33	D9-Z14856	BRACKET, PROBE MOUNT	2	
34	2C-08-07-0117	SCREW 10-24X3/4 FZA	10	
35	PS-GR0366	MACH.,14X28 IR.,GR,BTM	1	CG28IE
	PS-GR0365	MACH.,14X28 IR.,SM,BTM		CG28IEGT
36	D9-GR0562	ELMNT(MAKE FROM 2N-Z2392)	2	
37	D9-Z13338	ELEM & INSUL PLT BTM 14"	2	
38	D9-Z2888	INSULATION - 14"	2	

**IMPORTANT: WHEN ORDERING, SPECIFY VOLTAGE OR TYPE DESIRED
INCLUDE MODEL AND SERIAL NUMBER**

Some items are included for illustrative purposes only and in certain instances may not be available.



Parts List

January 07, 2015

Model: CG28IE & GR28IE, 28" ProMax Grills				
Fig No	Part No	Description	Qty	Application
39	D9-Z12885	INSULATION HOLD DOWN,	4	
40	2A-Z12946	BASE, FOOT, NON-SKID	4	
41	2A-Z12980	2.5" FOOT BASE	4	
42	2V-Z3027	CROSS SUPPORT	4	
43	D9-Z3028	SIDE LEG SUPPORT	2	
44	D9-Z3029	PART LEG SUPPORT - R	1	
45	D9-Z3030	PART LEG SUPPORT - L	1	
46	2K-3485	BUSHING HEYCO #SR-9	1	
47	D9-Z14487	PLATE-CORD BUSHING	1	
48	D9-GR0517	GREASE DRAWER ASSY.	2	
49	D9-GR0544	BASE ASSY/GREASE CAB.-14"	1	230V
	D9-GR0551	BASE BTM/GRS CAB ASM-LEFT		
50	D9-GR0253	BASE BTM GRS CAB ASM-230V	1	230V
	D9-GR0521	BASE / CREASE CAB ASSY		
51	2E-Z3808	SWITCH(EATON)-30A@120V,	2	
52	2C-Z2594	NUT 6-32 HEX W STL NP	24	
53	2K-08-07-0004	SPACER ROUND NYLON	8	
54	2J-Z11593	CONTROL BOARD, SINGLE SG	2	
55	2K-Z1971	SPACER .257X.75X.25 NYLON	8	
56	2C-1522	SCREW 1/4-20X 5 STL R.H.	4	
57	D9-Z3071	BRACKET - HANDLE	4	
58	2V-Z3072	HANDLE-SIDE	2	
59	2C-Y4275	RIVET 3/16X.300 POP AL SM	8	
60	2E-05-07-0350	TRANSFORMER 230V/10V 6VA	2	
61	2E-Z2894	TERMINAL BLOCK (304)	2	
62	2E-Z3335	RELAY DBL POLE-SNGL THROW	4	
63	2M-Z15583	OVERLAY,25"ELECTRONIC	1	
64	Z1-70-07-0343	SWITCH GUARD	2	
65	2M-Z18461	LABEL ON & OFF	2	
66	2I-05-07-0013	BOOT SWITCH	2	
NI	2E-Y9251	CORD SET CONT EUR 16AMP	2	230V
NI	2E-Y9253	INLET IEC 320 16 AMP	1	230V
NI	2E-Z2922	CORD STO 10/3NEMA L6-30P	1	

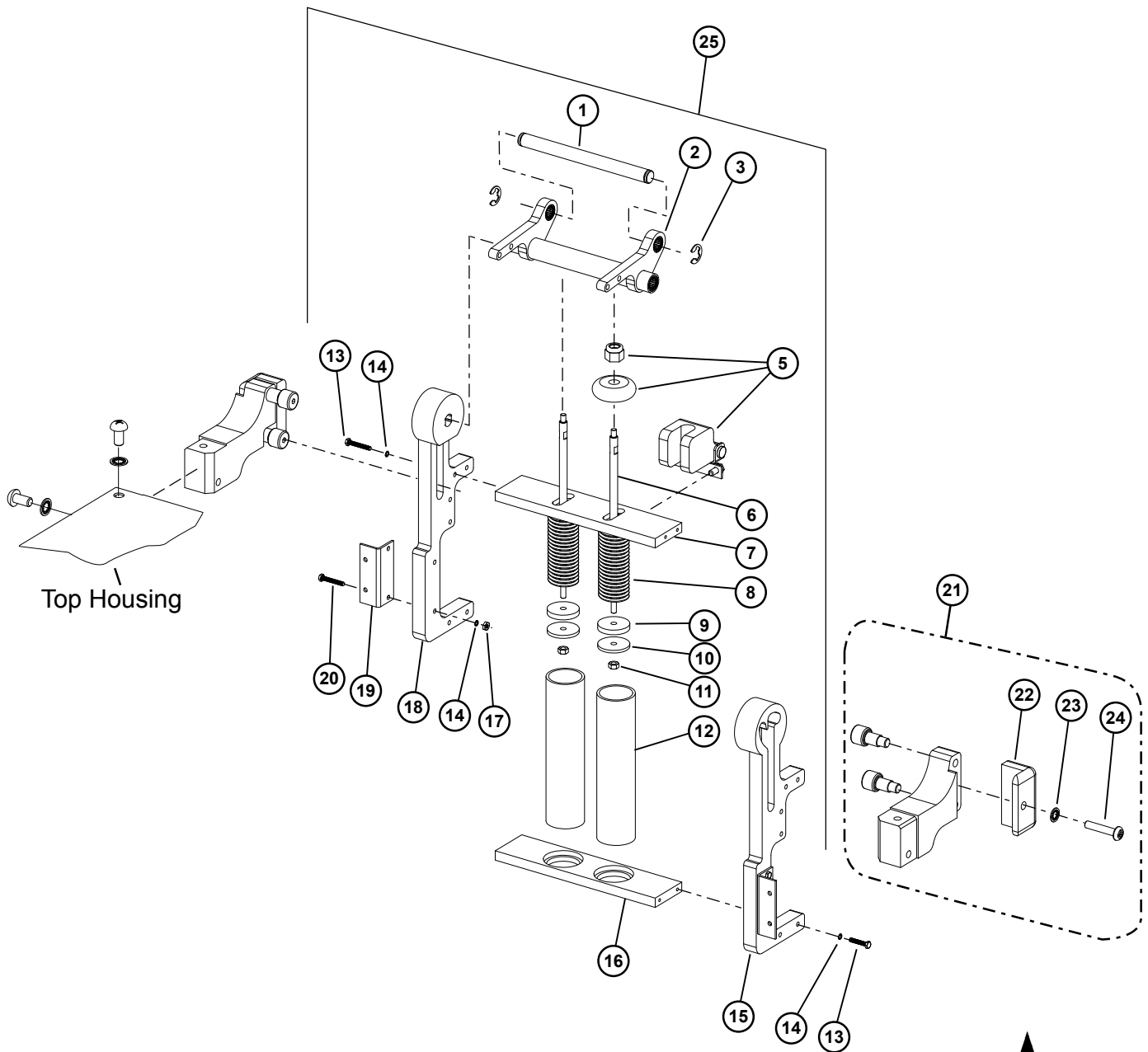
**IMPORTANT: WHEN ORDERING, SPECIFY VOLTAGE OR TYPE DESIRED
INCLUDE MODEL AND SERIAL NUMBER**

PAGE 2
OF 2

Some items are included for illustrative purposes only and in certain instances may not be available.



Star Manufacturing International, Inc.



MODEL: SG HINGE MECHANISM

PS-GR0536, PS-GR0537, PS-GR0538

PS-GR0560, PS-GR0561



STAR MANUFACTURING INTERNATIONAL, INC.

SK2507

Rev. D

1/15/14

Detail A

Parts List

January 07, 2015

HINGE MECHANISM TWO SIDED GRILLS				
Fig No	Part No	Description	Qty	Application
1	2A-Z12471	ARM GUIDE ASSEMBLY LT	1	ALL SINGLE
	2V-Z12452	ARM GUIDE ASSY., ST		SPLIT TOP
2	2A-Z11398	HINGE MECHANISM ROD	1	ALL SINGLE
	2A-Z11405	HINGE MECHANISM ROD, SPT		SPLIT TOP
3	2A-Z11404	SPRING GUIDE MOUNTING ROD	1	SPLIT TOP
	2A-Z11876			ALL SINGLE
4	2A-Z12472	ARM GUIDE ASSEMBLY RT	1	ALL SINGLE
5	D9-GR0515	BASIC ASSY, STOP	1	ALL
6	2V-Z19095	ROD, SPRING GUIDE	1	SPLIT TOP
			2	ALL SINGLE
7	2A-Z11400	SPRING SUPPORT, TOP	1	ALL SINGLE
	2A-Z11406	SPRING SUPPORT, TOP, SPT		SPLIT TOP
8	2P-Z11408	SPRING, 14" AL	2	SMOOTH & GROOVED ALUMINUM
	2P-Z11408	SPRING, 14" AL	1	SMOOTH IRON
	2P-Z11409	SPRING, COMPRESSION, SPT	1	
	2P-Z11409	SPRING, COMPRESSION, SPT	1	SPLIT ALUMINUM
	2P-Z13941	SPRING COMPRESSION, 14" GR IRON	2	GROOVED IRON
9	2A-Z11397	SPRING PISTON STOP	1	SPLIT TOP
			2	ALL SINGLE
10	2C-Z2670	NUT 1/4-20 W/LOCKWASHER	1	SPLIT TOP
		NUT 1/4-20 W/LOCKWASHER	2	ALL SINGLE
11	2V-Z11399	SPRING TUBE	1	SPLIT TOP
			2	ALL SINGLE
12	2C-9704	SCREW 10-24X1 STL HEX NP	8	SPLIT TOP
13	2C-20204-07	WASHER S/S #10 LOCK INT	12	ALL
14	2F-Z11383	LEFT SUPPORT	1	ALL
15	2A-Z11401	SPRING SUPPORT, BOTTOM	1	ALL SINGLE
	2A-Z11407			SPLIT TOP
16	2C-200230	NUT 10-24 HEX SS	4	ALL
17	2F-Z11384	RIGHT SUPPORT	1	ALL
18	D9-Z11387	SUPPORT MOUNTING BRACKET	2	ALL SINGLE
	D9-Z11883			SPLIT TOP
19	2C-Z11821	SCREW 10-24X1-1/4 HHD	4	ALL
20	2C-Z13975	CAM FOLLOWER ASSY, B VERS HNG	4	ALL
21	2F-Z11943	BRACKET LT, ROLLER MOUNT	1	ALL SPLIT TOP
	2F-Z11944	BRACKET RT, ROLLER MOUNT		
	2F-Z11945	BRACKET LT, ROLLER MOUNT		NON SPLIT TOP
	2F-Z11946	BRACKET RT, ROLLER MOUNT		
22	2A-Z12620	SPACER BLOCK	2	ALL
23	2C-6260	#10 INTERNAL TOOTH LOCK WASHER	2	ALL
24	2C-1516	#10-24 UNC X 1.00 LG RHP SCREW	2	ALL
NI	61-Q2686	LOCTIT THREADLOCKER 242	AR	
ITEM 25 DOES NOT INCLUDE ITEMS 20 THRU 24				
25	PS-GR0536	KIT, HINGE SPING 14 SPLT	2	SPLIT TOP
	PS-GR0537	KIT, HINGE SPRING, 14" ALUMINUM	1	SMOOTH & GROOVED ALUMINUM
	PS-GR0538	KIT, HINGE SPRING, 14" IRON	1	SMOOTH IRON