

MODEL: FSF
Front Loading Steamer Main Body Assembly



STAR MANUFACTURING INTERNATIONAL, INC.
 SK2276 Rev. B 1/18/13

2M-Z10887 Owners Manual Fast Steamers

PARTS LIST

August 31, 2009, Rev. E

MODEL: FSFR, FSFD, FSFRT, FSFDT, Front Loading Fast Steamer Main Body				
Fig NO	Part Number	Qty	Description	Application
1	C9-Z10101	1	TOP	FRONT LOADING
2	2C-Z10133	2	NUT, WING 10-24 SS	FRONT LOADING
3	C9-Z10095	1	COVER, CASTING	FRONT LOADING
4	C9-Z10096	1	DISPERSER	FRONT LOADING
5	2C-08-07-0285	1	SCREW 10-24X3/4X3/8 TYPE 2 HEX DBL END STL	FRONT LOADING
6	C9-Z10069	1	RACK, WIRE STEAMER	FRONT LOADING
6	C9-FS0313	1	LINER ASSEMBLY FSF STEAMER	FRONT LOADING
7	C9-FS0373	1	SPATULA ASSEMBLY	FRONT LOADING
8	2B-Z10069	1	SPATULA WIRE ASSY	FRONT LOADING
9	2C-Z11259	1	BOLT CARRIAGE 3/8-16X1" SS	FRONT LOADING
10	2A-Z11257	1	SPATULA HANDLE TUBE	FRONT LOADING
11	2A-Z11258	2	SPATULA ANGLED WASHER	FRONT LOADING
12	C9-Z10103	1	SPATULA	FRONT LOADING
13	C9-Z9990	1	SPATULA FRONT	FRONT LOADING
14	2R-09-WB-0027	1	HANDLE-BLK 3/8-16 HD698	FRONT LOADING
15	C9-Z10105	1	DRIP TRAY	FRONT LOADING
16	2C-Z6925	6	SCREW,#8 X.5 TEK HW SS	FRONT LOADING
17	C9-Z11250	1	DRIP TRAY SUPPORT FSF	FRONT LOADING
18	2A-Z9989	4	FOOT, 2" STEAMER	FRONT LOADING
19	2c-200015	2	SCREW, 8-32 X 3/8 KNURLED BR	FRONT LOADING
20	C9-FS0301	1	VENT ASSEMBLY	FRONT LOADING
21	C9-FS0344	1	FSF CASTING ASSEMBLY 208V	FRONT LOADING 208V
21	C9-FS0345	1	FSF CASTING ASSEMBLY 230V	FRONT LOADING 230/240V
22	2C-3033	12	SCREW-MACH 8-32X3/4 NPST	FRONT LOADING

2M-Z10887 Owners Manual Fast Steamers

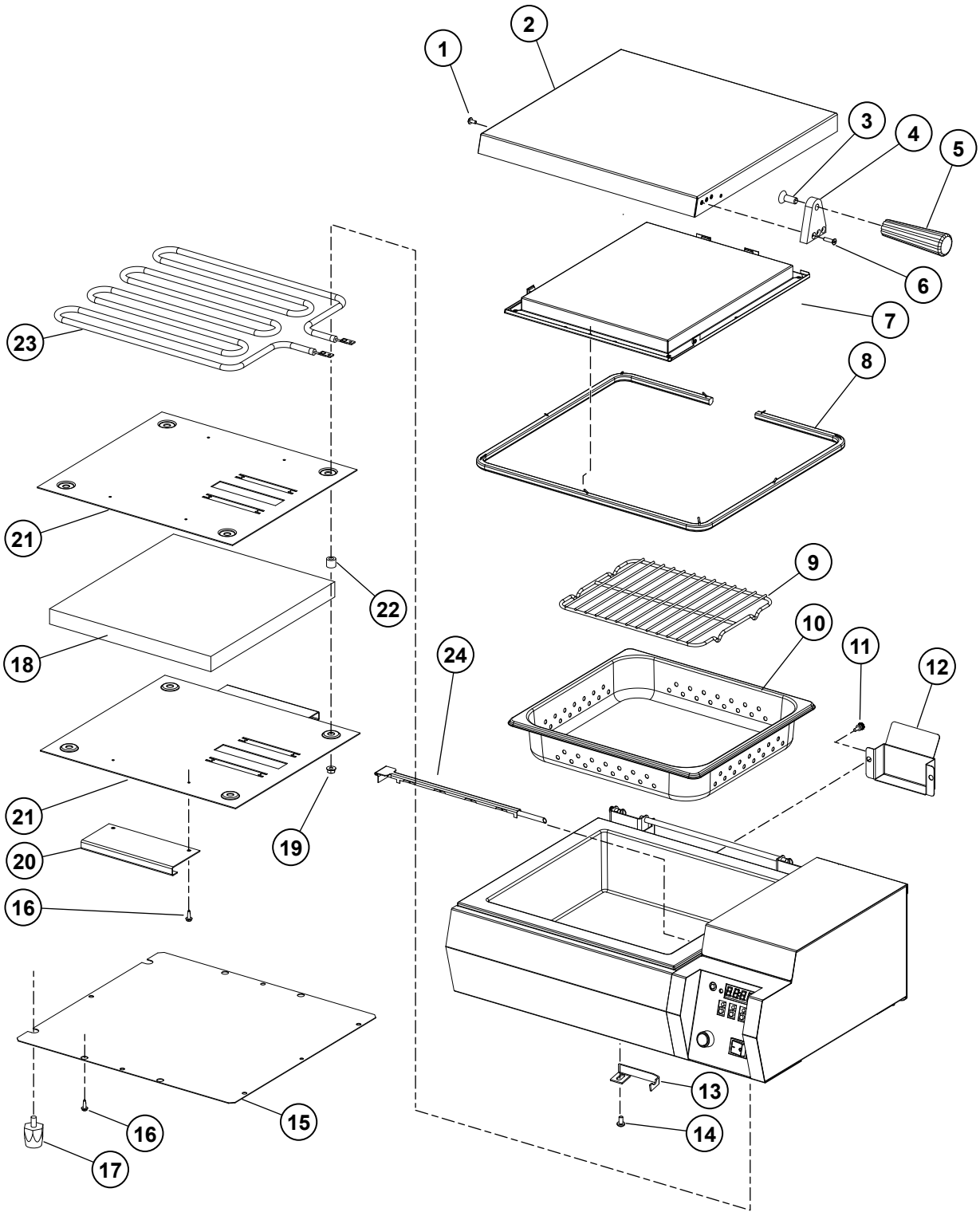
**IMPORTANT: WHEN ORDERING, SPECIFY VOLTAGE OR TYPE GAS DESIRED
INCLUDE MODEL AND SERIAL NUMBER**

PAGE 1
OF 1

Some items are included for illustrative purposes only and in certain instances may not be available.



Star Manufacturing International, Inc.



MODEL FS1 & FS2
Main Body Assembly



2M-Z10887 Owners Manual Fast Steamers

PARTS LIST

October 25, 2011, Rev. E

Model: FS1R, FS1D, FS1RT, FS1DT, FS2R, FS2D, FS2RT, FS2DT, Top Loading Fast Steamer Main Body				
Fig No	Part Number	Qty	Description	Application
1	2C-4063	AR	SCREW 10-24X1/2 SS THP	FS1 & FS2
2	C9-FS0364	1	COVER SKIN ASSY	FS1
	C9-FS0365			FS2
3	2C-Z9982	1	SCREW 3/8-16X1 PHFHMS SS	FS1 & FS2
4	2A-Z9955	1	HANDLE MOUNTING BLOCK	FS1 & FS2
5	2R-09-WB-0027	1	HANDLE-BLK 3/8-16X1 PHFHMS SS	FS1 & FS2
6	2C-9042	3	SCREW 10-24X.75 FH SS	FS1 & FS2
7	C9-FS0315	1	INSIDE COVER INSERT FS2	FS2
	C9-FS0316		INSIDE COVER INSERT FS1	FS1
8	2I-Z10033	1	FS2 COVER GASKET W/CLIPS	FS2
	2I-Z10034			FS1
9	2B-Z10067	1	BOTTOM GRATE FOR 1/2 PAN	FS1
	2B-Z5847		BUN RACK (SMALL)	FS2
10	2D-Z10054	1	1/2 PAN 2.5DP PERF SIDES -	FS1
	2D-Z10241		PAN, 2/3 PERFORATED	FS2
11	2C-Z4251	2	SCREW 8-32X3/8 RHP SS	FS1 & FS2
12	C9-Z9987	1	COVER DRIP CATCH FS1/2	FS1 & FS2
13	C9-Z10488	1	PROBE HOLDER FS1/FS2 E/C -	FS1RT, FS2RT, FS1DT, FS2DT
14	2C-1487	1	SCREW 6-32X1/4 RHP STL NP	FS1RT, FS2RT, FS1DT, FS2DT
15	C9-Z10174	1	BOTTOM FS2	FS2
	C9-Z10175		BOTTOM FS1	FS1
16	2C-Z6925	14	SCREW #8 X 1/2 HEX WB SS	FS1 & FS2
	2C-Z6925	10	SCREW,#8 X.5 TEK HW SS	FS2
17	2A-Z3828	4	1" SOLID LEG	FS1 & FS2
18	C9-Z10482	1	ELEMENT INSULATION FS1	FS1D, FS1DT, FS1R, FS1RT
	C9-Z10483		ELEMENT INSULATION FS2	FS2D, FS2DT, FS2R, FS2RT
19	2C-Z2893	4	NUT 10-24 HEX STL ZP 9/16 WASHER	FS1 & FS2
20	C9-Z10153	2	STEAM GENERATOR SUPPORT FS1 FS2	FS1 & FS2
21	C9-Z10336	2	ELEMENT RETAINER FS1	FS1
	C9-Z10337		ELEMENT RETAINER FS2	FS2
22	2A-Z6604	4	SPACER, INSULATION PLATE	FS1 & FS2
23	2N-Z9983	1	ELEMENT FS1 120V 1800W	FS1-120V
	2N-Z9984	1	ELEMENT FS2 120V 1800W	FS2-120V
24	C9-FS0378	1	FS1, WATER SPREADER ASSY	FS1
	C9-FS0397		FS2, WATER SPREADER ASSY	FS2

2M-Z10887 Owners Manual Fast Steamers

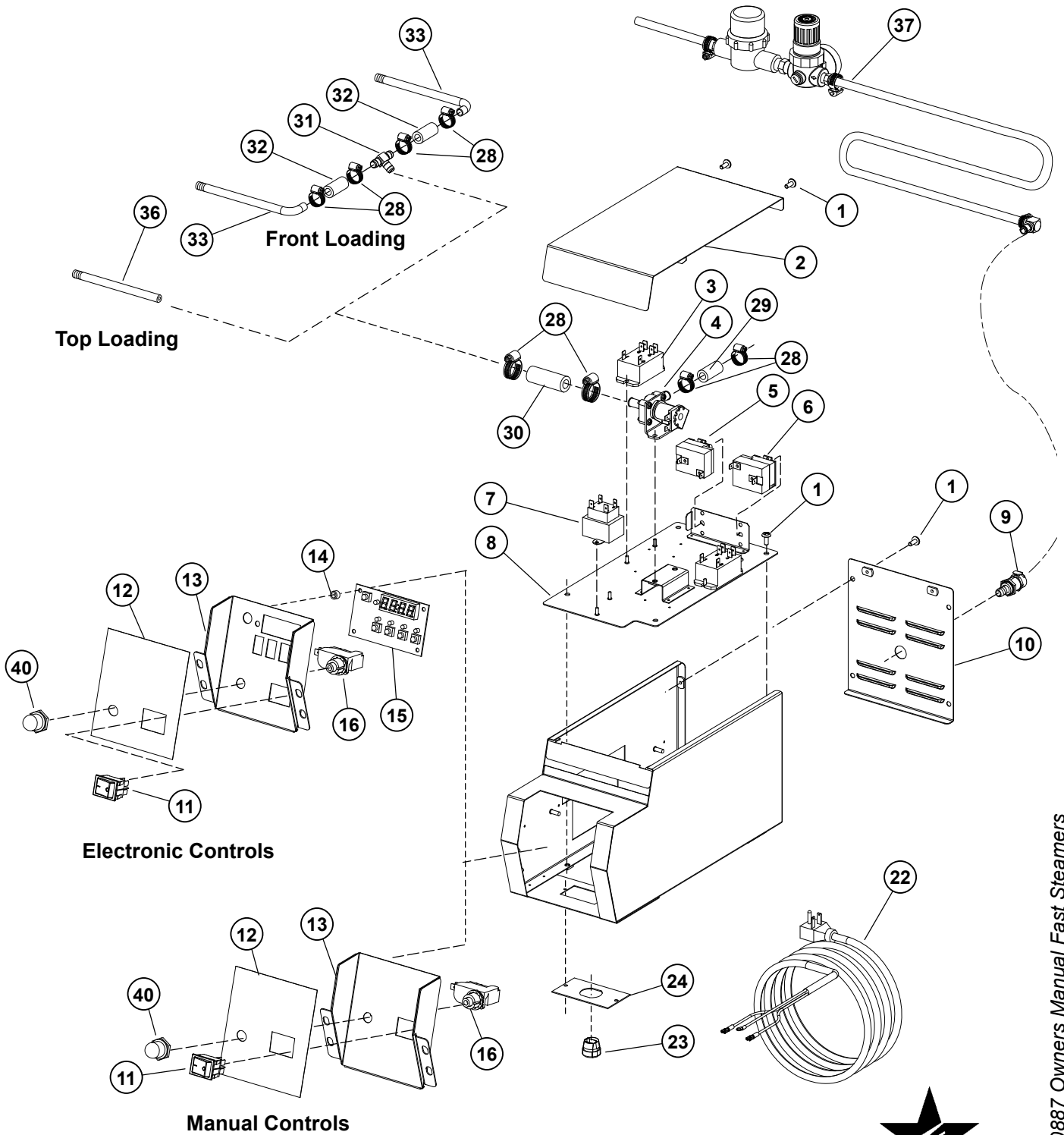
**IMPORTANT: WHEN ORDERING, SPECIFY VOLTAGE OR TYPE GAS DESIRED
INCLUDE MODEL AND SERIAL NUMBER**

**PAGE 1
OF 1**

Some items are included for illustrative purposes only and in certain instances may not be available.



Star Manufacturing International, Inc.

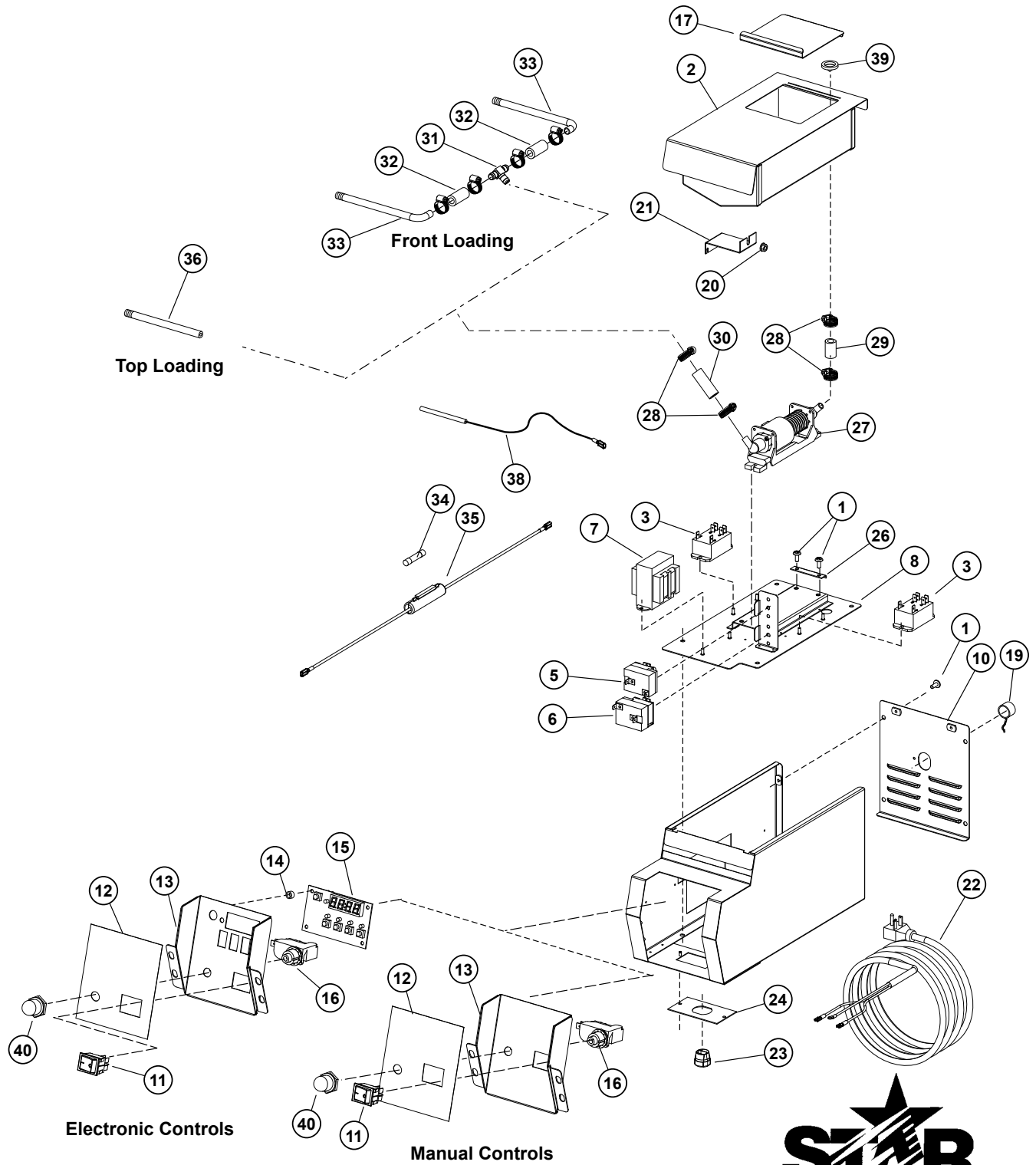


MODEL Fast Steamer
Control Box Assemblies
Direct Connect Water Supply



STAR MANUFACTURING INTERNATIONAL, INC.
 SK2277 Rev. B 6/21/12

2M-Z10887 Owners Manual Fast Steamers



MODEL Fast Steamer
Control Box Assemblies
Reservoir Water Supply



PARTS LIST

May 29, 2013, Rev. E

Top & Front Loading Fast Steamer Control Box Assemblies				
Fig No	Part Number	Qty	Description	Application
1	2C-Z4063	AR	SCREW 10-24X1/2 SS THP 18-8 OR 300 SERIES	
2	C9-FS0300	1	CB COVER ASSEMBLY DC DIRECT CONNECT	FS1DT-120V,FS2DT-120V, FSFDT-208/240V, FS1D-120V, FS2D-120V, FSFD-208/240V
	C9-FS0305		CONTROL BOX COVER ASSY STEAMER W/RESERVIOR	FS1RT-120V, FS2RT-120V, FSFRT-208/240V, FS1R-120V, FS2R-120V, FSFR-208/240V
3	2E-Z10158	2	RELAY, DPST-NO SEALED	FS1DT-120V, FS2DT-120V, FSFDT-208/240V, FS1RT-120V, FS2RT-120V, FSFRT-208/240V
4	2V-Z9981	1	SOLENOID VALVE 120V STMR	FS1DT-120V, FS2DT-120V, FS1D-120V, FS2D-120V
	2V-Z9988		SOLENOID VALVE 12V	FSFD-208/240V FSFDT-208/240V
5	2T-Z10248	1	THERMOSTAT, 122F-483F	FS1D, FS2D, FSFD, FS1R, FS2R, FSFR
	2T-Z10839		HL THERMOSTAT CAP-570	FSFD-208V
6	2T-Z10839	1	HL THERMOSTAT CAP-570	ALL
7	2E-05-07-0350	1	TRANSFORMER 230V/10V 6VA	FSFD-208/240V, FSFDT-208/240V
	2E-05-07-0351		TRANSFORMER 115/10V 6VA	FS1RT-120V, FS2RT-120V, FS1DT-120V, FS2DT-120V
	2E-Z10170		TRANSFORMER, 40V 12V 115/230	FSFRT-208/240V, FSFR-208/240V
8	C9-FS0317	1	CB BTM ASSY FSF DC EC	FSFDT-208/240V
	C9-FS0335		CB BTM ASSY FS1/2 DC MAN	FS1D-120V, FS2D-120V
	C9-FS0339		CB BTM ASSY FS1/2 DC EC	FS1DT, FS2DT
	C9-FS0341		CB BTM ASSY FS1/2 R EC	FS1RT, FS2RT
	C9-FS0343		CB BTM ASSY FS1/2 R MAN	FS1R, FS2R
	C9-FS0351		CB BTM ASSY FSF DC MAN	FSFD-208/240V
	C9-FS0352		CB BTM ASSY FSF R EC	FSFRT-208/240V
	C9-FS0360		CB BTM ASSY R MAN	FSFR-208/240V
9	2K-Z10080	1	Q-D FEMALE 3/8 HOSE PANEL	FS1DT-120V,FS2DT-120V, FSFDT-208/240V, FS1D-120V, FS2D-120V, FSFD-208/240V
10	C9-FS0311	1	CONTROL BOX BACK ASSY	FS1RT-120V, FS2RT-120V, FSFRT-208/240V, FS1R-120V, FS2R-120V, FSFR-208/240V
	C9-FS0314		CB BACK PNL ASSY DC	FS1DT-120V,FS2DT-120V, FSFDT-208/240V, FS1D-120V, FS2D-120V, FSFD-208/240V
11	2E-Z1858	1	SWITCH-LIGHTED	ALL
12	2M-Z10244	1	CONTROL PANEL LABEL E/C	FS1DT-120V, FS2DT-120V, FSFDT-208/240V, FS1RT-120V, FS2RT-120V, FSFRT-208/240V
	2M-Z10245		CONTROL PANEL LABEL MANUAL	FS1D-120V, FS2D-120V, FSFD-208/240V, FS1R-120V, FS2R-120V, FSFR-208/240V
13	C9-FS0320	1	CONTROL PANEL ASSY E/C	FS1DT-120V, FS2DT-120V, FSFDT-208/240V, FS1RT-120V, FS2RT-120V, FSFRT-208/240V
	C9-FS0334		CONTROL PANEL ASSY M/C	FS1D-120V, FS2D-120V, FSFD-208/240V, FS1R-120V, FS2R-120V, FSFR-208/240V
14	2K-Z1971	4	SPACER .257X.75X.25 NYLON	FS1DT-120V, FS2DT-120V, FSFDT-208/240V, FS1RT-120V, FS2RT-120V, FSFRT-208/240V
15	2J-Z9794	1	STEAMER CONTROL BOARD	FS1DT-120V, FS2DT-120V, FSFDT-208/240V, FS1RT-120V, FS2RT-120V, FSFRT-208/240V
16	2E-Z9991	1	SNAP PUSHBUTTON ASSY	ALL
17	C9-Z10486	1	TANK LID FSF FS1/2 STEAMER	FS1RT-120V, FS2RT-120V, FSFRT-208/240V, FS1R-120V, FS2R-120V, FSFR-208/240V
19	A3-35219	1	CAP & CHAIN	FS1RT-120V, FS2RT-120V, FSFRT-208/240V, FS1R-120V, FS2R-120V, FSFR-208/240V
20	2C-Z2893	1	NUT 10-24 HEX STL ZP 9/16 WASHER	FSFD-208/240V, FSFDT-208/240V, FSFR-208/240V, FSFRT-208/240V
21	C9-Z10481	1	PROBE/BULD HOLD DOWN BRKT	FSFD-208/240V, FSFDT-208/240V, FSFR-208/240V, FSFRT-208/240V

2M-Z10887 Owners Manual Fast Steamers

**IMPORTANT: WHEN ORDERING, SPECIFY VOLTAGE OR TYPE GAS DESIRED
INCLUDE MODEL AND SERIAL NUMBER**

PAGE 1
OF 2

Some items are included for illustrative purposes only and in certain instances may not be available.



Star Manufacturing International, Inc.

PARTS LIST

May 29, 2013, Rev. E

Top & Front Loading Fast Steamer Control Box Assemblies				
22	A5-RG2036	1	CORD SET 120V W/TERMINALS,	120V
	C9-FS0363		CORD ASSY 120V CSA	120VC
	C9-FS0362		CORD SET 12/3 6-20 6' , 208/240V	208/240V
23	2K-Z2895	1	BUSHING HEYCO OCB-500	FS1D, FS1DT, FS1R, FS1RT, FS2D, FS2DT, FS2R, FS2RT
	2K-Y6764		BUSHING - STRAIN RELIEF	FSFD, FSFDT, FSFR, FSFRT
24	C9-FS0359	1	CORD SET 14/3 5-20P 6FT	120V-CUL
	C9-Z10457		CORDSET MTG PLATE .88X.77	FS1D-120V, FS1DT-120V, FS1R-120V, FS1RT-120V, FS2D-120V, FS2DT-120V, FS2R-120V, FS2RT-120V
	C9-Z10458		CORDSET MTG PLATE .88X.844	FSFD-208240V, FSFDT-208/240V, FSFR-208/240V, FSFRT-208/240V
26	C9-Z10220	2	PUMP MOUNTING STRAP	FS1RT-120V, FS2RT-120V, FSFRT-208/240V, FS1R-120V, FS2R-120V, FSFR-208/240V
27	2U-Z10070	1	PUMP, OSCILLATING-12V	FSFRT-208/240V, FSFR-208/240V
	2U-Z9980		PUMP, OSCILLATING-115V, 22AMPS, (mfg before 6/16/09)	FS1RT-120V, FS2RT-120V, FS1R-120V, FS2R-120V
	2U-Z12875		PUMP, OSCILLATING-115V,38AMPS, (mfg after 6/16/09)	FS1RT-120V, FS2RT-120V, FS1R-120V, FS2R-120V
28	2C-Z10240	4	CLAMP, HOSE 7/16-25/32	FS1D-120V, FS1DT-120V, FS1R-120V, FS1RT-120V, FS2D-120V, FS2DT-120V, FS2R-120V, FS2RT-120V
		8		FSFD-208/240V, FSFDT-208/240V, FSFR-208/240V, FSFRT-208/240V
29	C9-Z10237	1	PUMP INLET HOSE	FS1R, FS1RT, FS2R, FS2RT, FSFR, FSFRT
	C9-Z10246		SOLENOID INLET HOSE	FS1DT-
30	C9-Z10238	1	FSF PUMP OUTLET HOSE FSF STEAMER	FSFRT-208/240V, FSFR-208/240V
	C9-Z10247		FS1/FS2 OUTLET HOSE	FS1/FS2
	C9-Z10456		FSF SOK OUT / TEE OUT HOSE	FSFD, FSFDT
31	2K-Z9986	1	UNION TEE, 3/8 SLIP-ON DOUBLE HOSE BARB-STEAMER	FSFD-208V
32	C9-Z10456	2	FSF SOL OUT/TEE OUT HOSE FSF STEAMER	FSFD-208/240V, FSFDT-208/240V
		1		FSFR-208/240V, FSFRT-208/240V
33	2A-Z9972	2	NIPPLE, PTFE 5.5"	FSFD, FSFDT, FSFR, FSFRT
34	2E-Z10855	1	FUSE 4AMP .25X1.25	FSFRT-208/240V, FSFR-208/240V
35	C9-FS0308	1	FUSEHOLDER WIRE ASSY F/F	FSFRT-208/240V
	C9-FS0330		FUSEHOLDER WIRE ASSY M/F	FSFR-208/240V
36	2K-Z9978	1	HALF NIPPLE 1/8X2.5	FS1D, FS1DT, FS1R, FS1RT, FS2D, FS2DT, FS2R, FS2RT
37	2V-Z10448	1	STEAMER WATER SUPPLY HOSE	FS1DT-120V, FS2DT-120V, FSFDT-208/240V, FS1D-120V, FS2D-120V, FSFD-208/240V
38	2E-Z3278	1	RTD PROBE - 48" LONG WIRE	FS1DT, FS2DT, FS1RT, FS2RT, FSFDT, FSFRT
39	2I-Z11785	1	STRAINER, WASHER	FS1RT-120V, FS2RT-120V, FSFRT-208/240V, FS1R-120V, FS2R-120V, FSFR-208/240V
40	2I-Z11291	1	SWITCH-BOOT	ALL

2M-Z10887 Owners Manual Fast Steamers

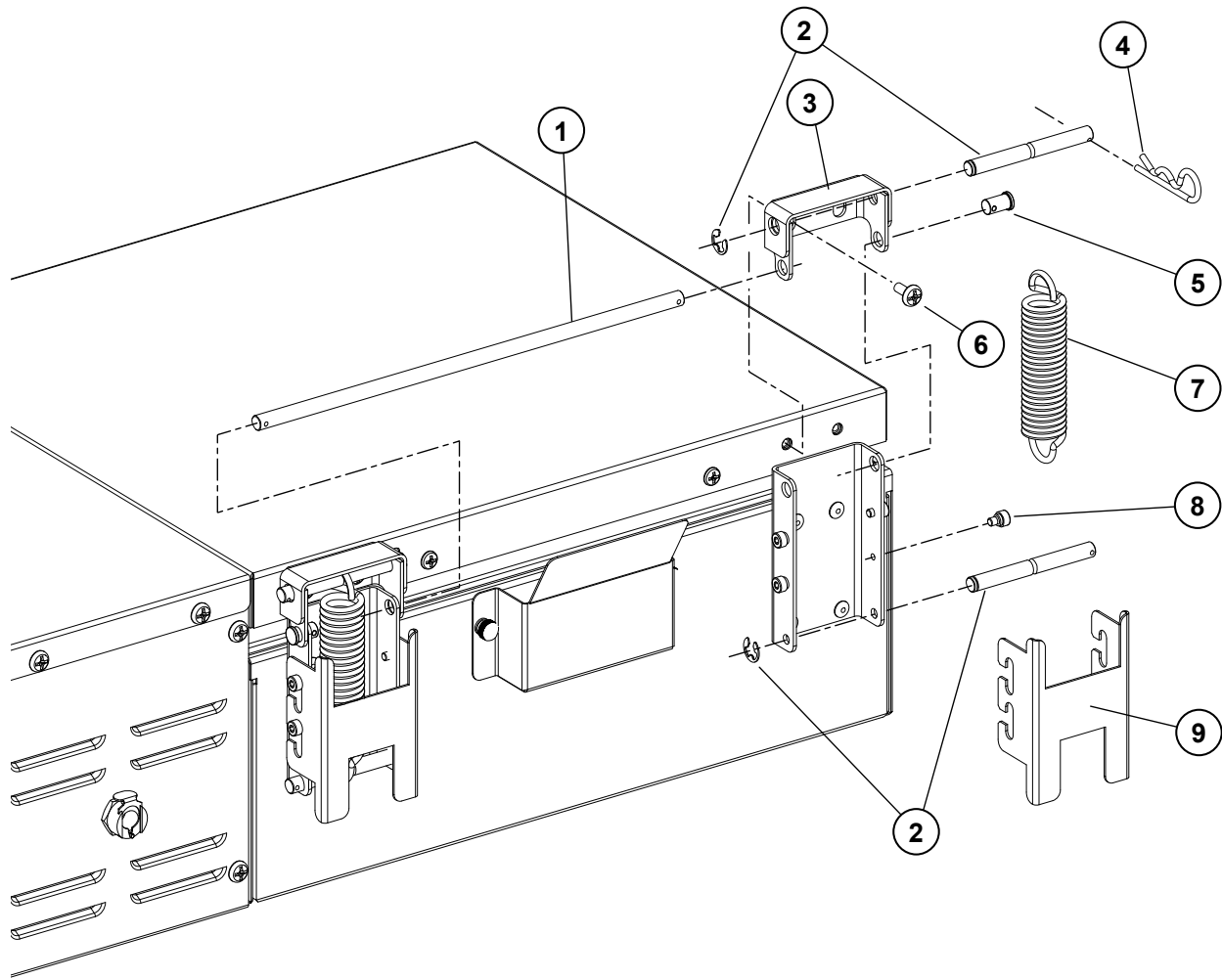
**IMPORTANT: WHEN ORDERING, SPECIFY VOLTAGE OR TYPE GAS DESIRED
INCLUDE MODEL AND SERIAL NUMBER**

PAGE 2
OF 2

Some items are included for illustrative purposes only and in certain instances may not be available.



Star Manufacturing International, Inc.



MODEL FS1 & FS2
Hinge Bracket Assembly



2M-Z10887 Owners Manual Fast Steamers

STAR MANUFACTURING INTERNATIONAL, INC.

SK2315

Rev. -

8/28/07

PARTS LIST

October 25, 2011, Rev. E

Model: Top Loading Fast Steamer Hinge Assemblies				
Fig No	Part Number	Qty	Description	Application
1	2A-Z10454	1	CENTER HINGE PIN	FS1
	2A-Z10677			FS2
2	2A-Z10214	4	PIN, SPRING STEAMER	ALL FS1 & FS2
3	C9-Z10156	2	HINGE/COVER BRACKET	ALL FS1 & FS2
4	2C-Z10215	8	COTTER PIN 18-8 5/16 .059	ALL FS1 & FS2
5	2A-Z9992	2	HINGE PIN, OUTSIDE	ALL FS1 & FS2
6	2C-Z4063	AR	SCREW 10-24X1/2 SS THP	
7	2P-Z10217	2	FS1 FS2 HINGE SPRING	ALL FS1 & FS2
8	2A-Z10093	8	SCREW SHOULDER 8-32X3/16	ALL FS1 & FS2
9	C9-Z10452	2	COVER STOP FS1 FS2	ALL FS1 & FS2

2M-Z10887 Owners Manual Fast Steamers

Some items are included for illustrative purposes only and in certain instances may not be available.



Star Manufacturing International, Inc.