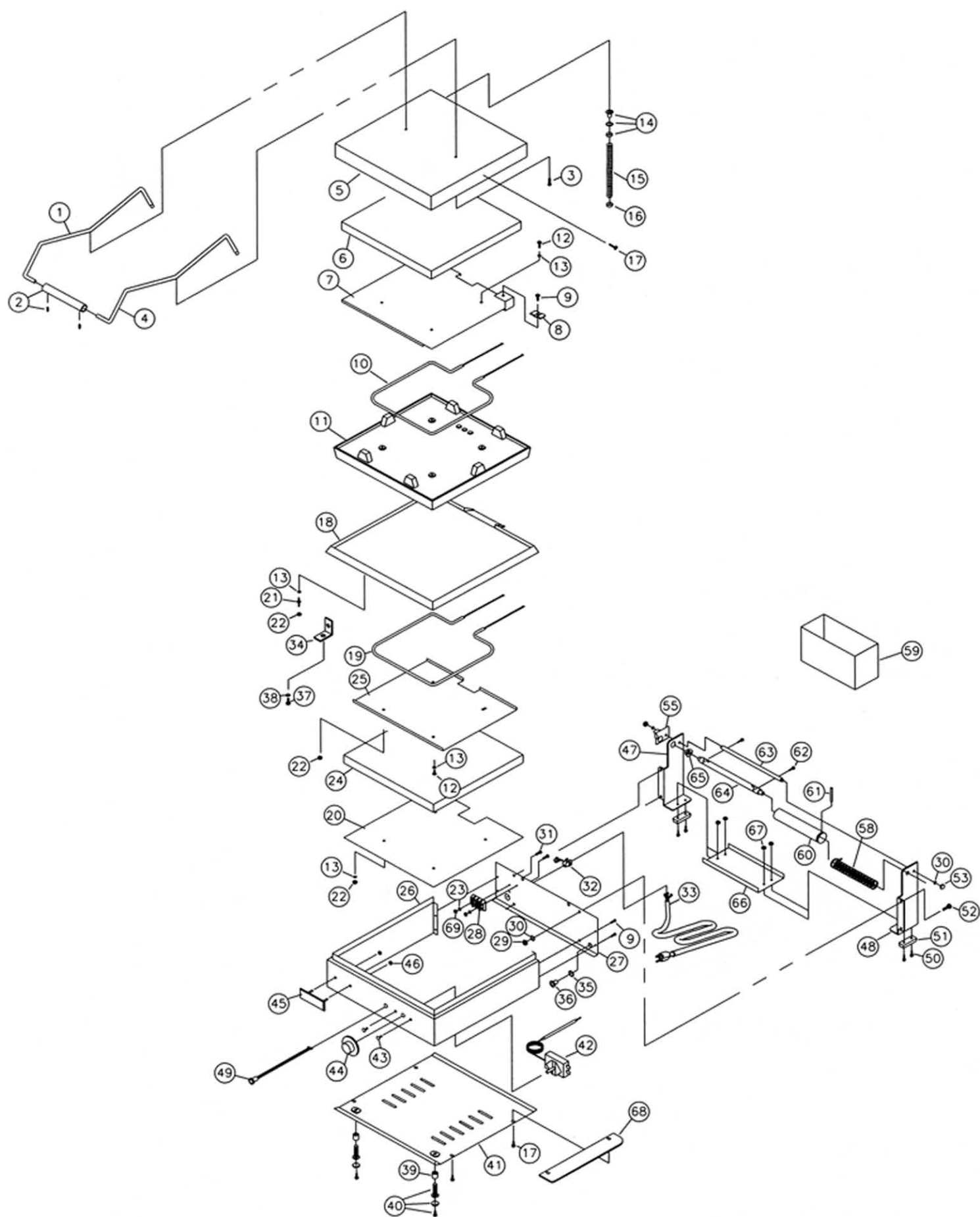


PARTS LIST GR136



MODEL TOASTSWELL SPEED GRILL MODEL GR-136

Key Number	Part Number	Number Per Unit	Description
1	D9-70-GR-0252		LEFT HANDLE ROD
2	D9-70-GR-0175		GRILL HANDLE, FINISHED (2C-08-07-0112 = SET SCREW, 1/4-20 x 1/4")
4	D9-70-GR-0253		RIGHT HANDLE ROD
5	D9-30-GR-0013		HOUSING: UPPER
6	Z1-06-07-0026		INSULATION: 12 X 12
7	D9-50-GR-0266		TOP ELEMENT PLATE ASSY
10	2N-05-GR-0165		SUB ASM: ELEMENT 700W (120V)
	2N-05-GR-0164		SUB ASM: ELEMENT 950W (240V)
11	2F-01-GR-0002		GRILL PLATE: NON-COATED TOP
14	2C-08-GR-0013		CONDUIT CLAMP
	2C-08-GR-0011		CONDUIT BUSHING
	2C-08-07-0050		LOCKWASHER 3/8"
15	D9-05-GR-0029		CONDUIT:FLEXIBLE
16	2C-08-GR-0013		CLAMP: CONDUIT
18	2F-Z1491		GRILL PLATE: NON-COATED BOTTOM
19	2N-05-GR-0166		SUB ASM: ELEMENT 950W (120V)
	2N-05-GR-0167		SUB ASM: ELEMENT 700W (240V)
20	D9-04-GR-0030		RETAINER, INSULATION
21	2C-08-07-0285		STUD: W/SQUARE NUT (10-24)
22	B9-04-WB-0046		CLAMP
24	Z1-06-07-0031		INSULATION: 14 X 14
25	D9-04-GR-0165		PLATE: ELEMENT
26	D9-04-GR-0089		HOUSING: LOWER
27	D9-04-GR-0079		COVER: BACK
28	2E-05-07-0057		TERMINAL: DOUBLE ROW
32	2K-05-07-0017		STRAIN RELIEF: CORDSET
33	2E-05-07-0005		CORDSET (120V)
	2E-05-07-0052		CORDSET (208/240V)
	2E-05-07-0168		CORDSET (120V) CANADIAN
34	D9-04-GR-0039		BRACKET: GRILL PLATE ANCHOR
36	2C-08-GR-0011		BUSHING: CONDUIT
39	2A-09-GR-0023		SPACER: NYLON LEG (BLACK)
40	D9-40-GR-0013		KIT: ADJUSTABLE LEG W/FOOT
41	D9-30-GR-0012		ASM: BOTTOM COVER
42	2T-05-GR-0005		THERMOSTAT
44	2R-09-07-0006		KNOB: TEMPERATURE CONTROL
45	2M-09-07-0005		NAMEPLATE: TOASTSWELL
46	2C-08-07-0260		PALNUT: FOR NAMEPLATE
47	D9-70-GR-0168		LEFT HINGE BRACKET
48	D9-70-GR-0169		RIGHT HINGE BRACKET
49	2S-05-07-0136		INDICATOR LIGHT (120V)
	2S-05-07-0138		INDICATOR LIGHT (240V)
51	2A-06-07-0027		FOOT:(BLACK)
55	D9-04-GR-0185		STOP: LID
57	D9-04-GR-0081		BRACKET: GREASE PAN
58	2P-09-GR-0001		SPRING: HINGE
59	2L-09-GR-0020		CONTAINER: GREASE (ALUMINUM)
60	D9-70-GR-0051		TUBE: SPRING COVER
61	D9-70-GR-0045		PIN: SPRING RETAINER
63	D9-70-GR-0139		ROD: HINGE
64	D9-70-GR-0126		SHAFT: HINGE
65	2A-09-GR-0003		BUSHING: HINGE SHAFT
68	D9-04-GR-0040		SPACER STRIP: HOUSING

**IMPORTANT: WHEN ORDERING, SPECIFY VOLTAGE OR TYPE GAS DESIRED
INCLUDE MODEL AND SERIAL NUMBER**

PAGE 1
OF 1

Some items are included for illustrative purposes only and in certain instances may not be available.