



**Star  
Manufacturing  
International Inc.**

10 Sunnen Drive  
St. Louis, MO 63143

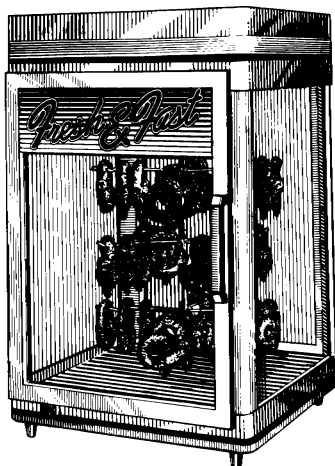
Phone: (314) 781-2777  
FAX: (314) 781-3636

**Installation  
and  
Operating  
Instructions**

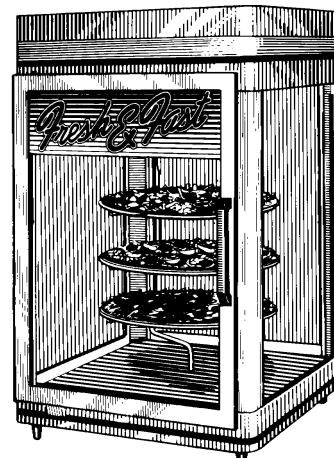
2M-Y9758 Rev. E 2/12/97

---

# **HOT FOOD HUMIDITY CABINET MODEL HFD-2**



Model HFD-2-P



Model HFD-2-CR



---

## PRODUCT IDENTIFICATION

Star Manufacturing International, Inc. Humidified Cabinet

Models: HFD-2-P 120V, HFD-2PTP 120V, HFD-2-CR 120V, HFD-2PTCR 120V, HFD-2,-2PT 120V

Note: PT denotes pass through models, - denotes non-pass through models, P denotes Pretzel Rack, CR denotes Circular Pizza rack, No suffix denotes Multipurpose Shelving

---

## SPECIFICATIONS:

Capacity: 72 large pretzels/bagels (P models), 3 16" pizzas (CR models)  
3 Multipurpose Shelves

Electrical: 120 volt, 60 hertz, single phase, 1550 watts, 12.9 amps

Dimensions: 21-1/8"W x 21-1/8"D x 34 - 1/2"H  
(55.37 cm W x 55.37 cm D x 87.63 cm H)

---

## OPERATING CONTROLS

The operating controls are located above the door on the side of the unit housing the digital thermometer (see figure 1).

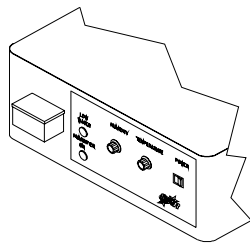


Figure 1

ON/OFF Switch - Activates lights, digital thermometer and air circulation system.

Temperature Dial - Adjusts cabinet temperature.

Humidity Dial - Adjusts cabinet humidity.

Humidifier On Indicator - Illuminates when humidity system is in operation.

Low Water Indicator - Illuminates when water needs to be added.

Water Reservoir - Water filling location.

---

## SAFETY SYMBOL



This symbol is intended to alert the user to the presence of important operating and maintenance instructions in the manual accompanying the appliance.



### CAUTION:

This equipment is designed and sold for commercial use only by personnel trained and experienced in its operation and is not sold for consumer use in and around the home nor for use directly by the general public in food service locations. For equipment to be used by the general public, please contact the factory.

### INSTALLATION:

Each machine has been properly wired and inspected at the factory for operation on the voltage and type of current specified on the nameplate. Machines with a nameplate stamped 120V, are equipped for operation on 120 volt 60 hertz AC single phase service and must be connected to a separate 15 amp circuit with a 3 wire grounded, polarized receptacle.



### CAUTION:

**DO NOT CONNECT TO ANY OTHER TYPE OF CURRENT OR THE MACHINE WILL BE SERIOUSLY DAMAGED.**

The guarantee of this machine as covered by the warranty card does not apply if an improper installation has been made.

### GENERAL OPERATING INSTRUCTIONS



### CAUTION:

**DO NOT BLOCK VENT HOLES ON TOP OF THE CABINET**

1. Ensure cabinet is plugged into the proper voltage receptacle prior to turning on.
2. Fill reservoir with water (distilled preferred) such that the water is approximately level with line on water fill decal (low water indicator should extinguish). Capacity is 1/2 Gallon.  
**CAUTION: DO NOT OVERFILL !**
3. Follow preheat instructions on the following page. Allow approximately 25 minutes for machine to reach proper temperature.
4. Monitor product temperature via the digital thermometer (see figure 2).

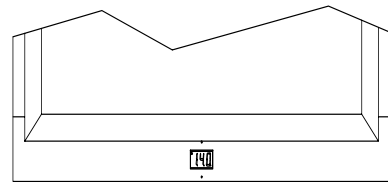


Figure 2

5. Load product into racking system. For maximum product freshness, adjust settings as specified. Pizza and pretzel racks are adjustable for different applications using the screws provided.
6. Periodically monitor water level by indicator on operator panel (see figure 3).

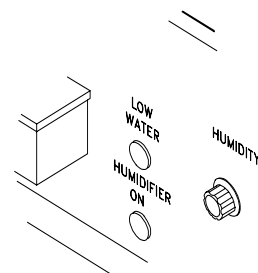


Figure 3

## **GENERAL OPERATING INSTRUCTIONS (Cont'd)**

7. Door handles and mounting screws are provided in envelope enclosed. Attach handle to right side of door using screws provided.
8. See attached sketch for instructions on reversing the doors.

## **CLEANING INSTRUCTIONS**

1. Disconnect electrical cord before cleaning the cabinet.
2. To maintain finish and shine of unit, wipe daily with a damp cloth and mild soap. Do not use harsh detergents or scouring pads.
3. Daily cleaning of inside glass, bottom pan and racking system with a damp cloth is recommended.

## **RECOMMENDED DIAL SETTINGS**

Preheat:	Temp = 6 Humidity = 2
Pizza:	Temp = High Humidity = 4
Pretzels/Bagels:	Temp = 4 Humidity = 5

## **DIAL SETTING FOR DESIRED TEMPERATURE**

Low - 2	100°F
3	110°F
4	130°F
5	150°F
6	165°F
High	175°F

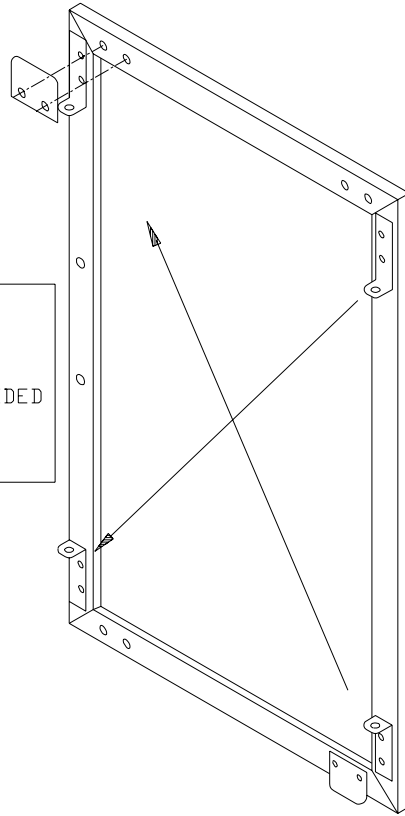
## **MAINTENANCE AND REPAIRS**

Contact the factory, a service representative or a local service company for service or required maintenance.

RETAIN THIS MANUAL FOR FUTURE REFERENCE  
PART NO. 2M-Y9758                      REV. E 2-12-97

# INSTRUCTIONS FOR REVERSING DOOR ON UNIT

**CAUTION !!**  
INSTALL DECAL AFTER DOOR  
ORIENTATION HAS BEEN DECIDED

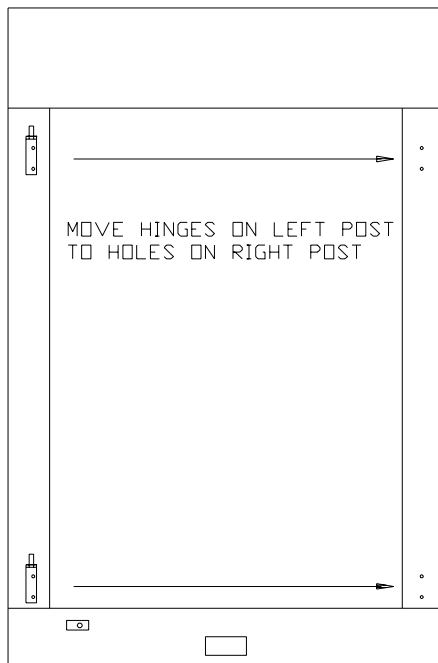


REMOVE UPPER DOOR HINGE.  
INSTALL IN OPPOSITE LOWER CORNER

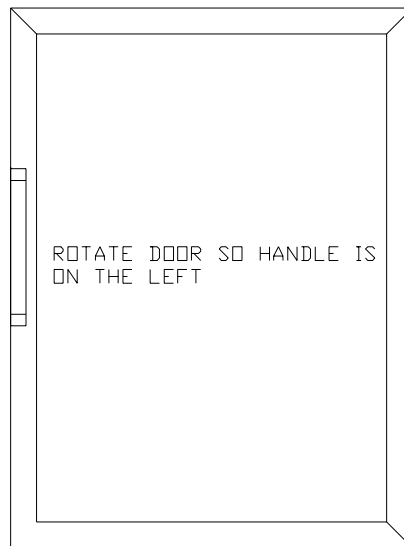
STEP 1

REMOVE LOWER DOOR HINGE AND TAB.  
INSTALL IN OPPOSITE UPPER CORNER

STEP 3



MOVE HINGES ON LEFT POST  
TO HOLES ON RIGHT POST

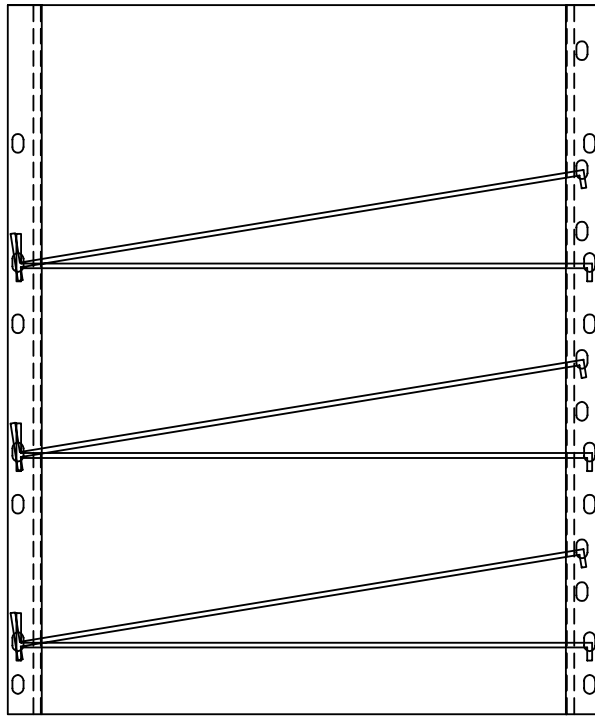


ROTATE DOOR SO HANDLE IS  
ON THE LEFT

STEP 2

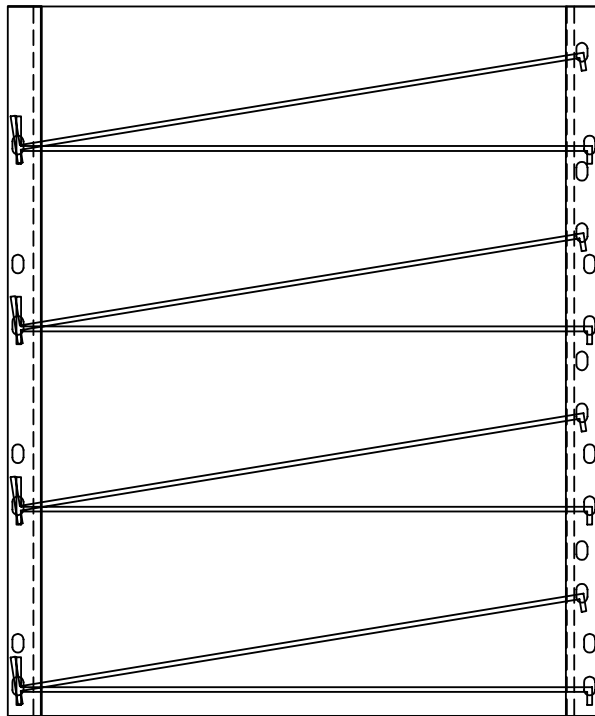
INSTALLATION OF RACKS ON HFD-2 MODELS

FRD TO CONTROL PANEL



INSTALLATION OF 3 RACKS

FRD TO CONTROL PANEL



INSTALLATION OF 4 RACKS

SOME ITEMS ARE INCLUDED FOR ILLUSTRATIVE PURPOSES ONLY AND IN CERTAIN INSTANCES MAY NOT BE AVAILABLE

This drawing contains information confidential to Star Manufacturing International, Inc. No reproduction or disclosure of its contents is permitted.

MODEL HFD-2



STAR MANUFACTURING INTERNATIONAL, INC.

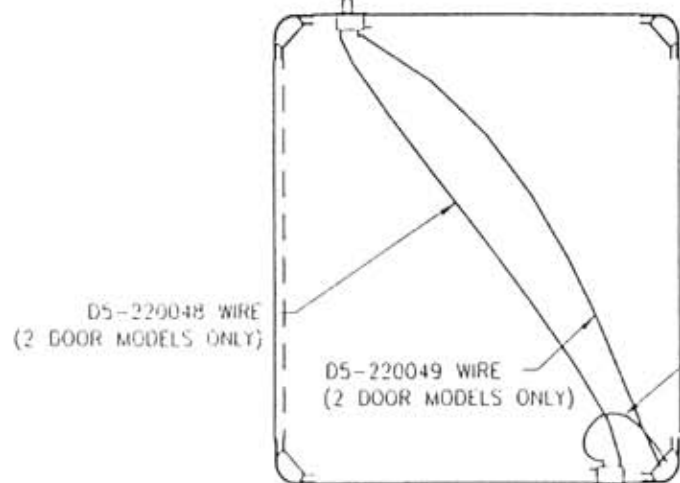
SK1858 REV. 04-26-2001

DR: M.P.

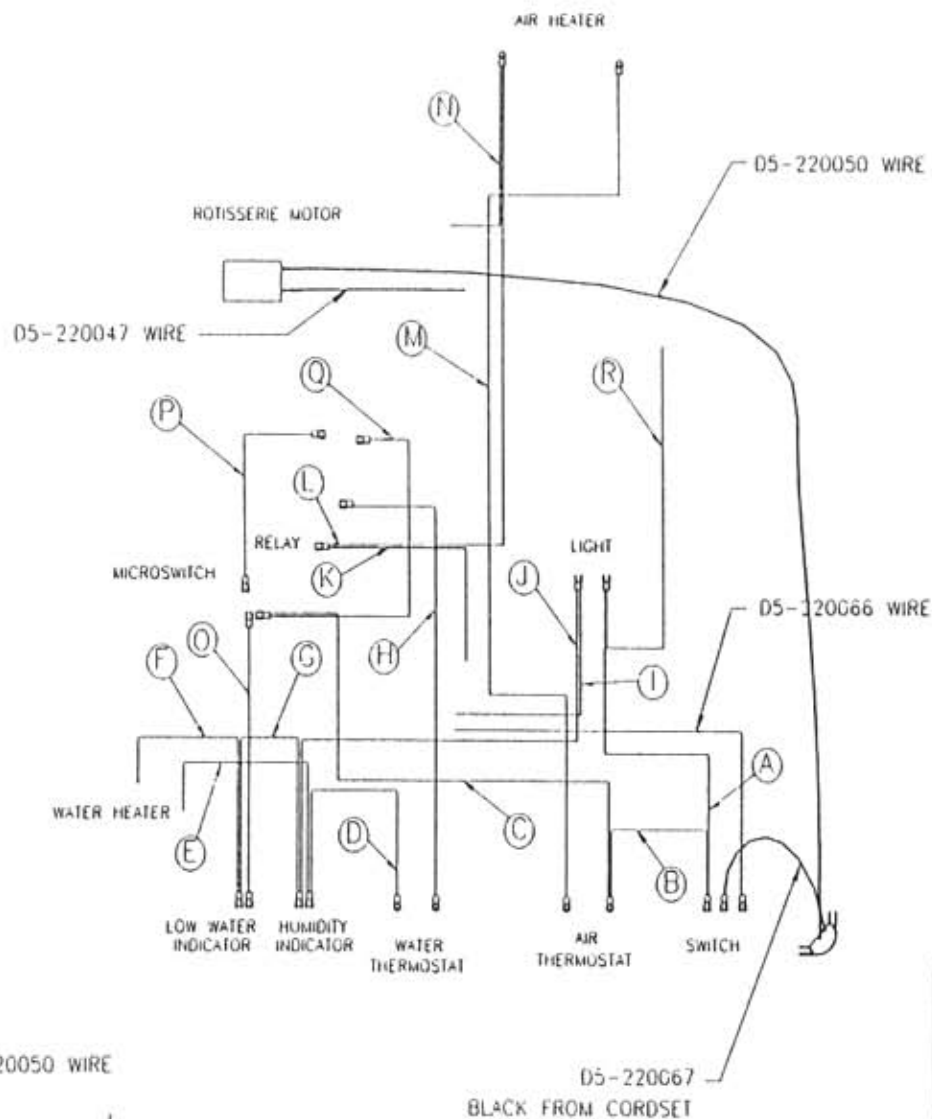
WIRE KEY

- A COLOR- BLACK, FROM ON/OFF SWITCH TO LIGHT
- B COLOR- BLACK, FROM ON/OFF SWITCH TO AIR THERMOSTAT
- C COLOR- BLACK, FROM AIR THERMOSTAT TO COMMON ON MICROSWITCH
- D COLOR- BLUE, FROM WATER THERMOSTAT TO HUMIDITY INDICATOR
- E COLOR- BLUE, FROM HUMIDITY INDICATOR TO SPLICE WITH WATER HEATER
- F COLOR- YELLOW, FROM LOW WATER INDICATOR TO SPLICE WITH WATER HEATER
- G COLOR- WHITE, FROM HUMIDITY INDICATOR TO LOW WATER INDICATOR
- H COLOR- BROWN, FROM WATER THERMOSTAT TO COMMON ON RELAY
- I COLOR- YELLOW, FROM HUMIDITY INDICATOR TO LIGHT
- J COLOR- YELLOW, FROM LIGHT TO SPLICE WITH RELAY AND WIRE FROM CORD
- K COLOR- WHITE, FROM COIL ON RELAY TO SPLICE WITH WIRE FROM LIGHT AND WIRE FROM CORD
- L COLOR- WHITE, FROM COIL ON RELAY TO AIR HEATER
- M COLOR- BLACK, FROM AIR THERMOSTAT TO AIR HEATER
- N COLOR- WHITE, FROM AIR HEATER TO SPLICE WITH FAN AND TRANSFORMER
- O COLOR- ORANGE, FROM LOW WATER INDICATOR TO NO TERMINAL ON MICROSWITCH
- P COLOR- PURPLE, FROM NC TERMINAL ON MICROSWITCH TO COIL ON RELAY
- Q COLOR- BLACK, FROM COMMON ON MICROSWITCH TO NO OF RELAY
- R COLOR- BLACK, FROM LIGHT TO SPLICE

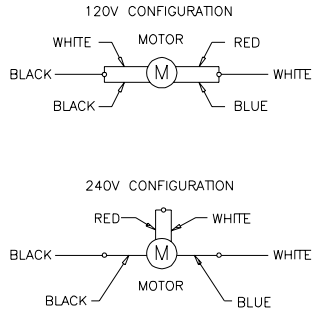
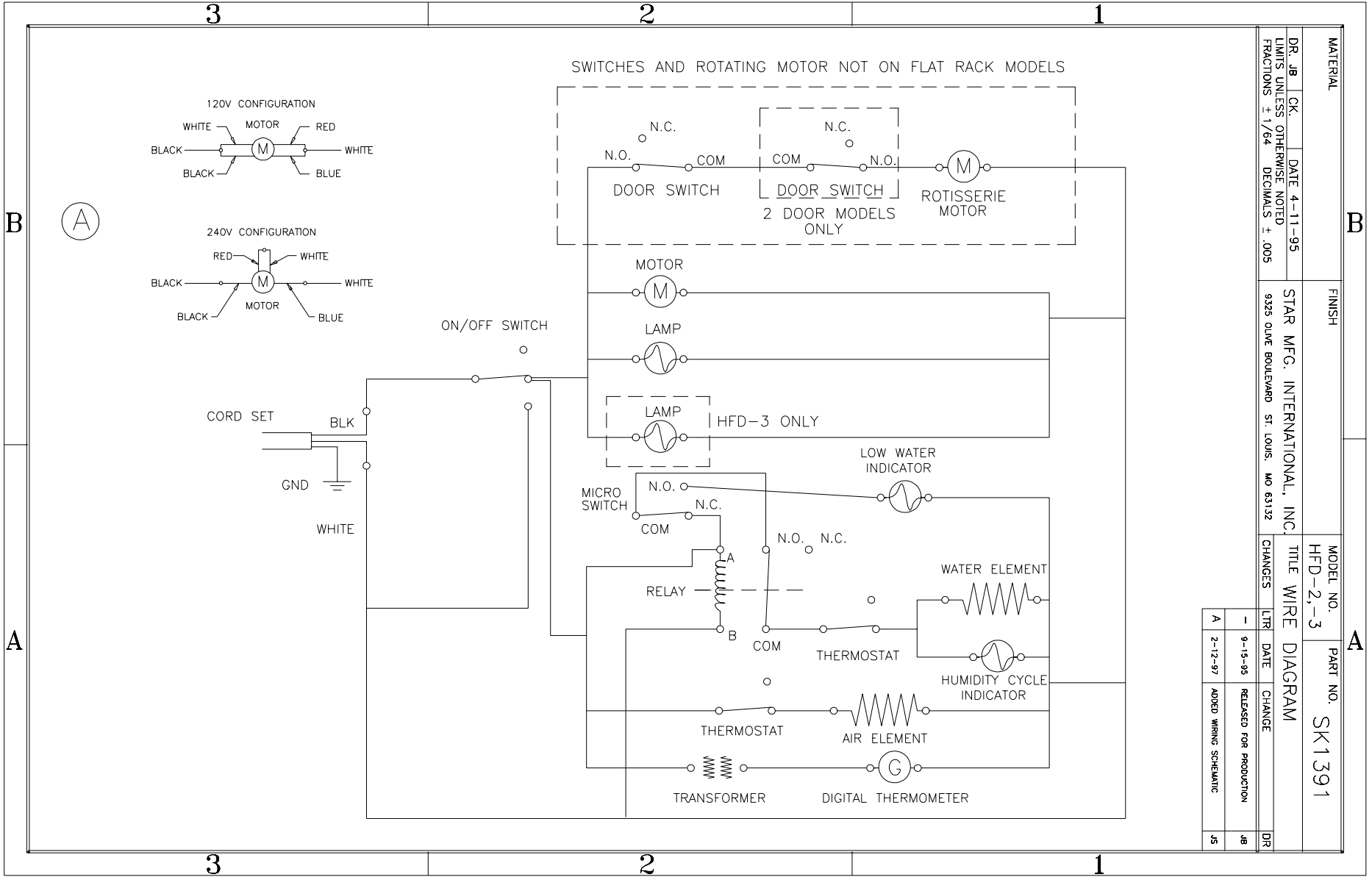
2E-Y9700 SWITCH REF



VIEW LKG UP AT BOTTOM OF CABINET



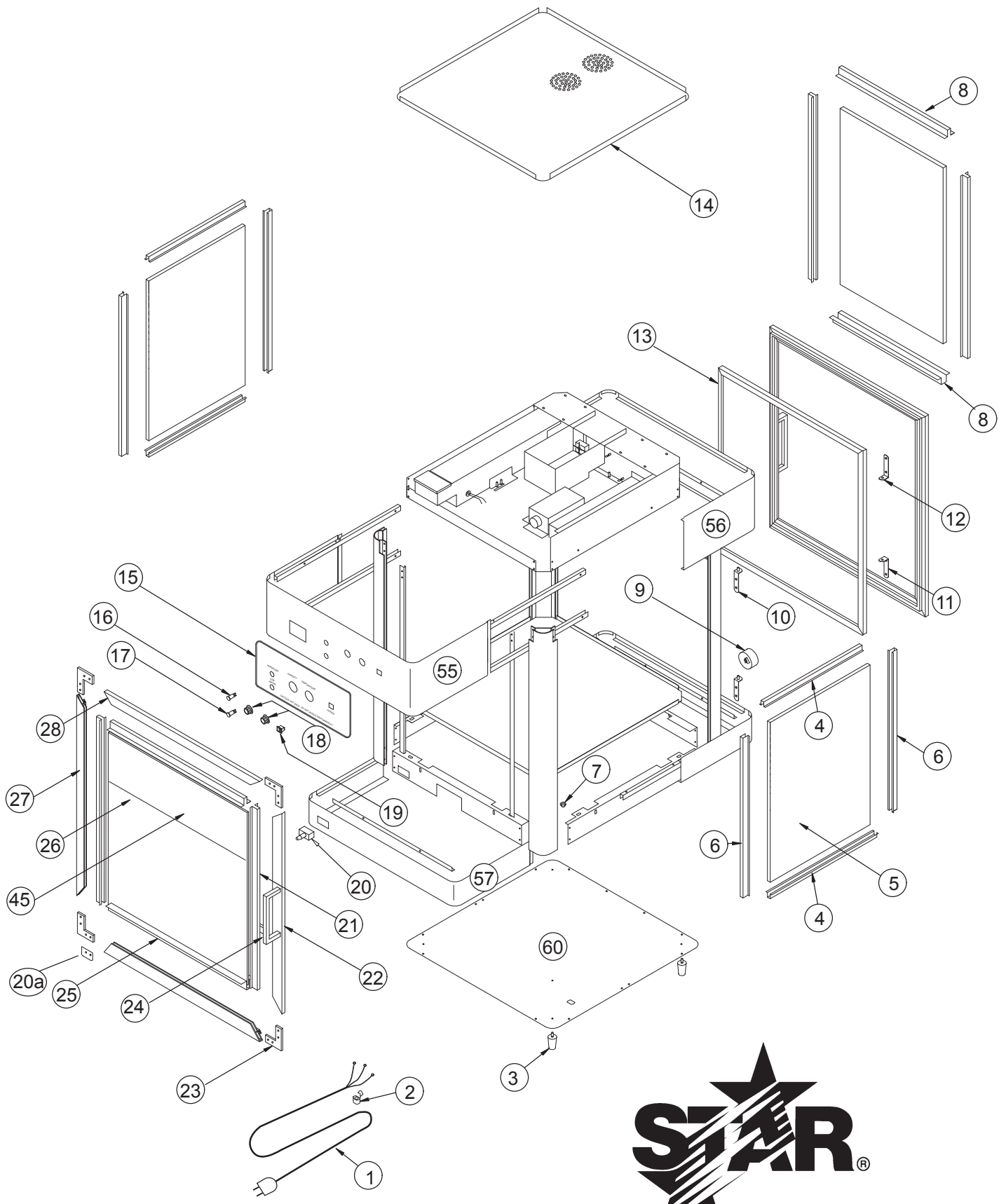
MATERIAL	FINISH	MODEL NO.	PART NO.
DR. JB	STAR MFG. INTERNATIONAL, INC	HFD-2	SK 1368
CK.	DATE 4-11-95	TITLE	WIRE SCHEMATIC
LIMITS UNLESS OTHERWISE NOTED	933 ONE 90th AVENUE ST. LOUIS, MO 63122	CHANGES	DATE CHANGE
FRACTIONS : 1/64	DECIMALS : .005	1	11-93
		RELEASED FOR PRODUCTION	



SWITCHES AND ROTATING MOTOR NOT ON FLAT RACK MODELS

MATERIAL		FINISH		MODEL NO.		PART NO.	
DR. JB CK.		STAR MFG. INTERNATIONAL, INC.		HFD-2,-3		SK1391	
LIMITS UNLESS OTHERWISE NOTED FRACTIONS ± 1/64 DECIMALS ± .005		9325 OLIVE BOULEVARD ST. LOUIS, MO 63132		TITLE WIRE DIAGRAM			
DATE 4-11-95		CHANGES		LTR		DATE	
		-		9-15-95		RELEASED FOR PRODUCTION	
		A		2-12-97		ADDED WIRING SCHEMATIC	
		JB				DR	
		JS					

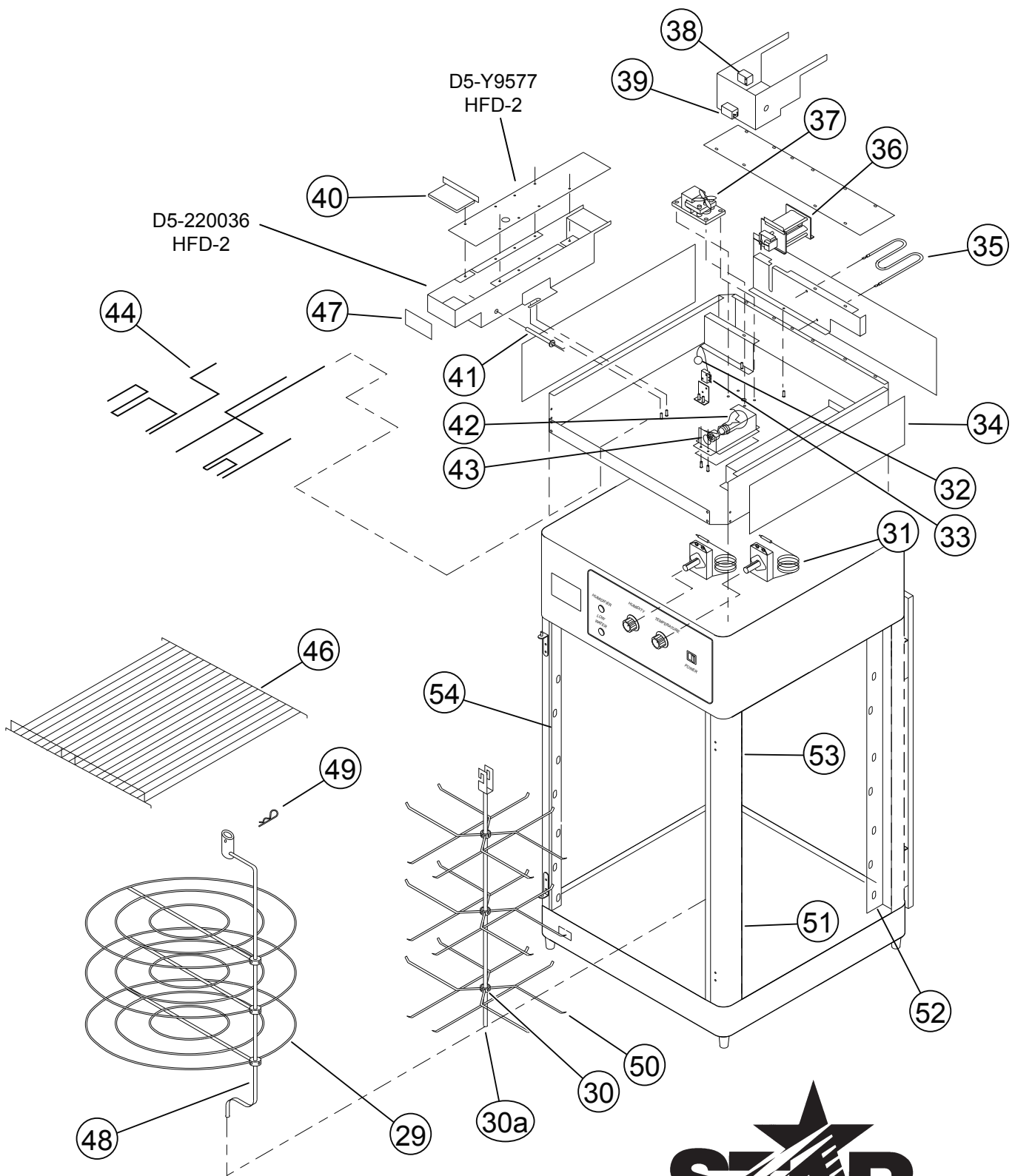




MODEL HFD-2,-3 120V

STAR MANUFACTURING INTERNATIONAL, INC.

SK1374 REV. A 1/14/97



2M-Y9758, Humidified Cabinet HFD2, HFD3



MODEL HFD-2,-3 120V REV. A

STAR MANUFACTURING INTERNATIONAL, INC.

SK1375 12-9-96

# PARTS LIST

EFFECTIVE 09/09/13

Model: HFD-2 HUMIDIFIED CABINET				
Fig No	Part No	Qty	Description	Application
1	C3-G8021	1	CORD ASSEMBLY (120V)	
	C3-39221		CORD ASSEMBLY (240V)	
2	2K-Y2968	1	BUSHING - STRAIN RELIEF	
3	2A-6904	4	FOOT	
	2P-Y3404		PLUG-FOOT (not shown)	
	2C-1557		SCREW-FOOT (not shown)	
4	D5-Y9623	6/4	GLASS CHANNEL (16-7/8")	HFD-2-P HFD-2-CR/HFD-2PTP HFD-2PTCR
5	2Q-Y9567	2/3	GLASS - SIDE	HFD-2-P HFD-2-CR/HFD-2PTP HFD-2PTCR
6	D5-Y9624	6/4	GLASS CHANNEL (23-3/8")	HFD-2-P HFD-2-CR/HFD-2PTP HFD-2PTCR
7	2K-Y1139	1	BUSHING	
9		1	PROBE - THERMOMETER/TRANSFORMER	(see KEY # 38)
10	D5-220084	2/4	DOOR HINGE ASSY	HFD-2-P HFD-2-CR/HFD-2PTP HFD-2PTCR
	2C-1654	4/8	SCREW-DOOR HINGE (not shown)	HFD-2-P HFD-2-CR/HFD-2PTP HFD-2PTCR
11	D5-Z0499	1/2	BRACKET - DOOR HINGE	HFD-2-P HFD-2-CR/HFD-2PTP HFD-2PTCR
12	D5-Z0500	1/2	BRACKET - DOOR HINGE	HFD-2-P HFD-2-CR/HFD-2PTP HFD-2PTCR
13	2M-Y9568	1/2	MAGNETIC GASKET	HFD-2-P HFD-2-CR/HFD-2PTP HFD-2PTCR
14	D5-Y9590	1	TOP COVER	
15	2M-Z0273	1	LABEL-OPERATOR PANEL	
16	2S-Y9114	1	INDICATOR - GREEN	(120V)
	2S-Z0626	1		(240V)
17	2J-Y6689	1	INDICATOR - RED	(120V)
	2J-Y6690	1		(240V)
18	2R-Y9116	2	KNOB - CONTROL	
19	PS-PD2046	1	SWITCH	
20	2E-Y9700	1/2	SWITCH - DOOR INTERRUPT (120/240V)	HFD-2-P HFD-2-CR/HFD-2PTP HFD-2PTCR
20a	D5-Z0295	1/2	DOOR TAB	HFD-2-P HFD-2-CR/HFD-2PTP HFD-2PTCR
21-28	D5-220035	1/2	DOOR ASSEMBLY	HFD-2-P HFD-2-CR/HFD-2PTP HFD-2PTCR
21	D5-Y9624	2	(PER DOOR) GLASS CHANNEL	
22	2I-Y9573	1	(PER DOOR) DOOR LEG RIGHT VERTICAL	
23	2I-Y9125	4	(PER DOOR) DOOR INSERT	
24	2R-Y9124	1	(PER DOOR) HANDLE	
	2C-Y9221	2	(PER DOOR) SCREW-HANDLE	(not shown)
25	D5-Y9623	2	(PER DOOR) GLASS CHANNEL	
26	2Q-Y9569	1	(PER DOOR) DOOR GLASS	
27	2I-Y9572	1	(PER DOOR) DOOR LEG LEFT VERTICAL	
28	2I-Y9574	2	(PER DOOR) DOOR LEG HORIZONTAL	
29	2B-Z4280	3	PIZZA SHELF	HFD-2-CR HFD-2PTCR
	2C-Z0546	6	SCREW-PIZZA SHELF (not shown)	
	2C-Z4175	1	ALLEN WRENCH (9/64) (not shown)	
30	D5-220042	1	PRETZEL RACK ASSEMBLY w/HOLDERS	HFD-2-P HFD-2PTP
30a	D5-220055	1	SHAFT-PREZZEL RACK (21-27/32")	
31	2T-Y9113	2	THERMOSTAT	(120/240V)

2M-Y9758, Humidified Cabinet HFD2, HFD3



Star Manufacturing International, Inc.

# PARTS LIST

EFFECTIVE 09/09/13

Model: HFD-2 HUMIDIFIED CABINET				
Fig No	Part No	Qty	Description	Application
32	D5-Y9866	1	FLOAT	
	2I-Y9130	2	GROMMET/BUSHING-FLOAT (not shown)	
	D5-Y9579	1	FLOAT WIRE (not shown)	
33	2E-Y9151	1	MICROSWITCH	(120/240V)
34	D5-Y9595	3	INSULATION	
35	2N-Y9145	1	AIR HEATER	(120V)
	2N-Z0628			(240V)
36	2U-Y9144	1	FAN - BLOWER	(120V)
	2U-Z0627			(240V)
37	2U-Y6953	1	MOTOR - ROTISSERIE	(120V)
	2U-Y6954			(240V)
38	2J-Y9112	1	THERMOMETER/PROBE/TRANSFORMER (120V)	(Degrees in Farenheit)
	2J-Z0631		THERMOMETER/PROBE/TRANSFORMER (240V)	(Degrees in Celcius)
39	2E-Y9148	1	RELAY	120V
	2E-Z0625			240V
40	D5-Y9578	1	LID RESERVOIR	
	D5-220036	1	RESERVOIR ASSEMBLY COMPLETE	
	D5-220037	1	RESERVOIR ONLY (tank)	
41	2N-Y9181	1	WATER HEATER (120V)	
	2N-Z0629	1	WATER HEATER (240V)	
42	2S-Y9118	1	BULB - 100W (120V)	
	2S-Z0630	1	BULB - 100W (240V)	
43	2E-Y9184	1	SOCKET	
44	2E-Y9629	1	WIRE HARNESS	
45	2M-Z0051	1	DOOR DECAL	
46	2B-Z0289	3	SHELF	HFD-2 HFD-2PT
47	2M-Z0291	1	LABEL WATER FILL	
48	2B-220090	1	PIZZA SHAFT	
49	2C-Z0812	1	HAIRPIN	
50	2B-Z7205	3	PRETZEL HOLDER ASSEMBLY	HFD-2-P HFD-2PTP
	2C-Z0546	6	SCREW-PRETZEL HOLDER (not shown)	
	2C-Z4175	1	ALLEN WRENCH (9/64) (not shown)	
51	D5-Z0284	1/2	RACK ANGLE RIGHT	HFD-2 HFD-2PT
52	D5-Z0307	1	RACK ANGLE LEFT	HFD-2
53	D5-Z0308	1	RACK ANGLE RIGHT	HFD-2
54	D5-Z0283	1/2	RACK ANGLE LEFT	HFD-2 HFD-2PT
55	D5-Y9596	1	TOP WRAP - OPERATOR	
56	D5-Y9591	1	TOP WRAP - CUSTOMER	
57	D5-Y9584	1	BOTTOM WRAP - OPERATOR	
58	C3-Y7955	1	BOTTOM WRAP - CUSTOMER	
59	D5-220051	1	BOTTOM INNER PAN	
60	D5-220038	1	BOTTOM PANEL	
NI	2M-Y9859	1	TOP STRIPE	(not shown)
NI	2M-Y9860	1	BOTTOM STRIPE	(not shown)

2M-Y9758, Humidified Cabinet HFD2, HFD3