



MODEL

R2E-12BK-208

Conveyor Toasters

**Electronic Controls**

## Conveyor Toasters Installation Instructions



These symbols are intended to alert the user to the presence of important operating and maintenance instructions in the manual accompanying the appliance.



Go to:  
[www.star-mfg.com/scripts/manuals.aspx](http://www.star-mfg.com/scripts/manuals.aspx)  
to obtain this units installation & operations manual, warranty & other documents.

### NOTICE

Using any part other than genuine Holman factory supplied parts relieves the manufacturer of all liability.

Holman reserves the right to change specifications and product design without notice. Such revisions do not entitle the buyer to corresponding changes, improvements, additions or replacements for previously purchased equipment.

Due to periodic changes in designs, methods, procedures, policies and regulations, the specifications contained in this sheet are subject to change without notice. While Holman Manufacturing exercises good faith efforts to provide information that is accurate, we are not responsible for errors or omissions in information provided or conclusions reached as a result of using the specifications. By using the information provided, the user assumes all risks in connection with such use.



### CAUTION GENERAL SAFETY INFORMATION

This equipment is designed and sold for commercial use only by personnel trained and experienced in its operation and is not sold for consumer use in and around the home nor for use directly by the general public in food service locations.

Before using your new equipment, read and understand all the instructions & labels associated with the unit prior to putting it into operation. Make sure all people associated with its use understand the units operation & safety before they use the unit.

All shipping containers should be checked for freight damage both visible and concealed. This unit has been tested and carefully packaged to insure delivery of your unit in perfect condition. If equipment is received in damaged condition, either apparent or concealed, a claim must be made with the delivering carrier.

Concealed damage or loss - if damage or loss is not apparent until after equipment is unpacked, a request for inspection of concealed damage must be made with carrier within 15 days. Be certain to retain all contents plus external and internal packaging materials for inspection. The carrier will make an inspection and will supply necessary claim forms.

### GENERAL INSTALLATION INFORMATION

The unit was shipped fully assembled and ready to plug into a standard outlet specified for its voltage and amp draw. If improper electrical supply is determined, contact a qualified electrician prior to using the unit. Removal and replacement of the power cord and plug will void the warranty. For assistance, contact your local authorized service agent for service or required maintenance.

Level unit using the adjustable feet under the unit (approximately 1/2" adjustment).

Before using the unit for the first time, wipe down the exterior with a damp cloth.

Allow enough space around the toaster for adequate ventilation. Do not operate the unit without the crumb tray properly positioned. Overheating and poor toasting may occur. Read all labels on the unit and follow their instructions.

### MAINTENANCE AND REPAIRS

Contact the factory, a service representative or a local service company for service or required maintenance. Go to [www.star-mfg.com/scripts/manuals.aspx](http://www.star-mfg.com/scripts/manuals.aspx) to find a service agent near you. Replacement cord sets must be purchased from Star Manufacturing International, Inc. or our authorized agents.

Should you need any assistance regarding the operation or maintenance of any Holman equipment; write, phone, fax or e-mail our service department. In all correspondence mention the model number and the serial number of your unit, along with the voltage.

**Business Hours:** 8 am to 4:30 p.m. Central Standard Time

**Telephone:** (877) 242-0270

**Fax:** (314) 781-2714

**E-mail:** Parts@star-mfg.com  
Service@star-mfg.com  
Warranty@star-mfg.com

**Website:** [www.star-mfg.com](http://www.star-mfg.com)

**Mailing Address:** Star International Holdings Inc., Company  
10 Sunnen Drive  
St. Louis, MO 63143  
U.S.A.

## ELECTRICAL CONNECTION

Before making any electrical connection to this unit, check that the power supply is adequate for the voltage, amperage and requirements stated on the rating plate. A wiring diagram is included in the Installation & Operations manual, which can be downloaded at [www.star-mfg.com/scripts/manuals.aspx](http://www.star-mfg.com/scripts/manuals.aspx).

Disconnect the unit from the power source before installing or removing any parts.


Be absolutely sure that the ground connection for the receptacle is properly wired. Do not connect equipment to power without proper ground connections. Improper grounding may result in personal injury or fatality.

 **DO NOT CUT OR REMOVE THIS PLUG OR GROUNDING PRONG FROM THE PLUG.**

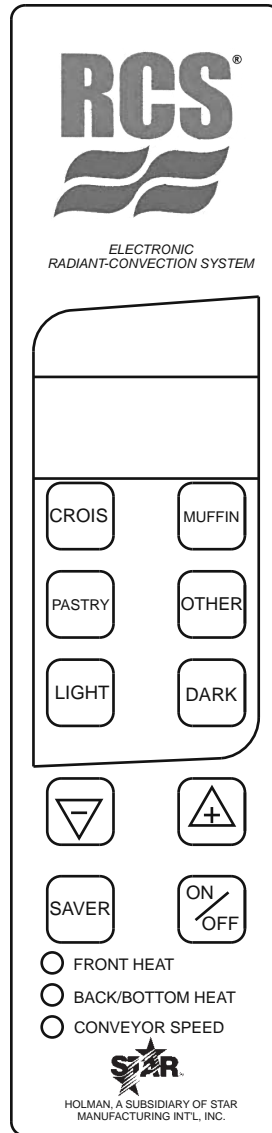
 **CONNECT/PLUG UNIT INTO DEDICATED A.C. LINE ONLY SPECIFIED ON THE DATA PLATE OF THE UNIT.**

 **CERTAIN SURFACES ARE EXTREMELY HOT DURING OPERATION AND CARE SHOULD BE TAKEN WHILE USING THIS UNIT.**

 **DO NOT IMMERSE OR LET THE UNIT STAND IN WATER.**

 **DO NOT HOSE DOWN THE UNIT OR THE TABLE/COUNTER IF THE UNIT IS ON THE TABLE/COUNTER.**

 **KEEP AWAY FROM RUNNING WATER.**



The Holman RCSe conveyor toaster comes with pre-programmed factory default settings for **CROISSANT, MUFFIN & PASTRY**.

Factory default settings are as follow:

| R2E-12BK-208V DEFAULT SETTINGS |          |             |                |
|--------------------------------|----------|-------------|----------------|
| Menu Buttons                   | Top Heat | Bottom Heat | Conveyor Speed |
| CROIS                          | 8        | 8           | 45             |
| MUFFIN                         |          |             | 25             |
| PASTRY                         |          |             | 60             |
| OTHER                          |          |             | 80             |
| LIGHT                          |          |             | +10%           |
| DARK                           |          |             | -10%           |

*\*After 45 seconds unit will return to its programmed setting.*

## POWER SAVER SWITCH

There are three Power Saver modes:

**ON:** Unit is in pre-programmed power saving setting.

**OFF:** Power Saver mode is turned off.

**AUTO ON:** Power Saver turns on when there has been no activity for a programmed length of time.

The operator may adjust the level of power reduction for the saver mode. *(Note: conveyor may move slowly when in saver mode.)*

Two buttons (+) and (-) are used when increasing or decreasing the value of each programmable setting.

A red LED light located at the lower portion of the control panel label will indicate if the value for top heat, bottom heat or conveyor speed is being adjusted.

IL2323



**CERTAIN SURFACES ARE EXTREMELY HOT DURING OPERATION AND CARE SHOULD BE TAKEN WHILE USING THIS UNIT.**

### START UP

When the toaster has been plugged into a suitable outlet and power supply, the word **OFF** will be displayed on the L.E.D. read out.

- A. Press the *ON/OFF* button once to turn on the toaster. The toaster will now enter into pre-heat and "PREHT" will be displayed (the elements will begin to glow but the conveyor and fan motor will not turn on).
- B. After one minute, the fan motor will turn on and the conveyor will begin turning at the previously saved setting (for initial start up, the drive motor will operate at the factory default setting).
- C. After four minutes, the display will show the last used program selection i.e. (for initial startup, CROIS, MUFFIN, PASTRY, OTHER, will be the last program selected).

### DAILY OPERATION

Check the power cord to insure that it is plugged into a proper outlet.

Press the *ON/OFF* button once to turn the toaster on. Press the button a second time to turn the toaster off.

**NOTE:** When the toaster is turned off, the fan and conveyor motors will continue to run for five minutes. The words **COOL** and **DOWN** will be alternately displayed during that time. After five minutes, the word **OFF** will be displayed until the *ON/OFF* button is pressed again.

Once the toaster has been pre-heated, the menu buttons can be pressed to change to **CROIS, MUFFIN, PASTRY, OTHER.**

### OPERATING HINTS AND SAFETY

Disconnect power to the unit with the *ON/OFF* button at the end of each day of operation.

Do not leave the unit in operation without an attendant.

Do not leave the unit at high temperature when not in use or during idle periods. This will cause food particles and grease film to carbonize.

### PROGRAMMING

#### A. CONVEYOR SPEED (temporary setting)

The conveyor speed is programmable with a range from 0 to 99 with 0 being the slowest and 99 being the fastest. Each menu item can have independent conveyor speed settings.

#### B. PROGRAMMING VALUES FOR MENU ITEMS

To make a program change to the top & bottom elements, or conveyor speed, you must first be in the menu item you want changed. Example: to change the programmed conveyor speed for croissants, the display must read **CROIS**. To change the programmed conveyor speed for MUFFIN, the display must read **MUFFIN** and so on for each menu item.

- 1) Select the menu item you want to change i.e. **CROIS, MUFFIN, PASTRY, OTHER.**
- 2) Press and hold both ( + ) AND ( - ) buttons for 3 seconds until the display goes blank, release the buttons and the display will show three characters for the menu item elected and the last two characters for the current value setting, i.e. **CROIS, MUFFIN, PASTRY, OTHER.** The red L.E.D. light for upper front element at the bottom of the label will flash.
- 3) Press the ( + ) or ( - ) buttons to increase or decrease the setting for the upper front element.
- 4) Press the button for the menu button again and the red L.E.D. for the upper rear and lower element will flash.
- 5) Press the ( + ) or ( - ) buttons to increase or decrease the setting for the upper rear and lower element.
- 6) Press the button for the menu button again and the red L.E.D. for the conveyor speed will flash.
- 7) Press the ( + ) or ( - ) buttons to increase or decrease the setting for the conveyor speed.
- 8) To skip one feature setting without making any changes, press the menu item button one time and the red L.E.D. light for the next item will now flash.
- 9) To change the POWER SAVER values press the SAVER button or to save your new setting(s), and exit the program mode press the menu button.
- 10) The last two characters in the display will show **MN** for minutes.
- 11) The first three characters will be numerical to represent the time setting.
- 12) When set to "OFF" the Saver button will be disabled during operation. The PowerSaver can be set to "OFF" or using the ( + ) or ( - ) set the time from 15 to 480 minutes.
- 13) Press the SAVER button to change the power reduction using the ( + ) or ( - ) buttons to increase or decrease the setting.
- 14) Press the POWER SAVER button to save changes and to exit.

## CLEANING

Preventive maintenance for your Holman toaster consists of the following recommended cleaning procedures. To keep your toaster in its top operating condition, these steps should be performed on a daily or weekly basis as required.

### Supplies

KAY® QSR Oven Cleaner

KAY® QSR Heavy Duty Multi-Purpose Sink Detergent  
(dispensed use solution)

KAY® Sink Sanitizer (use solution prepared at the sink)

No Scratch Pad

Red Cloth

### Daily Procedure:

1. Turn toaster off, conveyor will continue to run until cooled down (approx. 5-10 minutes)
2. Immediately spray the oven cleaner onto the No Scratch Pad and scrub the conveyor chain while it is still warm and moving.

**NOTE: DO NOT SPRAY directly onto the conveyor belt or into the cooking chamber. Overspray onto the heating elements can damage or shorten the life of the elements.**

3. Wash the No Scratch pad at the 3 compartment sink and then soak with Multi-Purpose Sink Detergent. Ring the pad out so that it is only damp and continue to scrub the conveyor belt while it's still moving.
4. Rinse the No Scratch pad at the 3 compartment sink to remove all detergent and then soak with clean warm water. Ring the pad out so that it is only damp and continue to scrub the conveyor belt while it still moving.
5. Wipe the conveyor belt with a clean red cloth dampened with sanitizer solution while it is still moving. Allow to air dry.
6. Rinse the No Scratch pad at the 3 compartment sink and then soak with clean warm water. Ring the pad out so that it is only damp and wipe exterior areas of the toaster.
7. Remove interior crumb tray and bottom catch tray and take to the three compartment sink. Spray the pieces with oven cleaner and allow to sit on the drain board for a minimum of five minutes.
8. Wash, Rinse and Sanitize removable pieces and allow to air dry before sliding the trays back into the unit.
9. Unit is now ready to turn ON for warm up and use.



**DO NOT IMMERSE THE UNIT IN WATER OR LET THE UNIT STAND IN WATER.**



**DO NOT USE A NON-STICK SPRAY ON THE CONVEYOR BELT, IT WILL CAUSE A STICKY BUILD-UP AND INCREASE STICKING.**



**DO NOT HOSE DOWN THE UNIT OR THE TABLE/COUNTER IF THE UNIT IS ON THE TABLE/COUNTER.**



**KEEP AWAY FROM RUNNING WATER.**

STAR INTERNATIONAL HOLDINGS INC. COMPANY  
Star - Holman - Lang - Wells - Bloomfield - Toastmaster  
10 Sunnen Drive, St. Louis, MO 63143 U.S.A.  
(314) 678-6303  
[www.star-mfg.com](http://www.star-mfg.com)



Star  
Manufacturing  
International Inc.

10 Sunnen Dr.  
St. Louis, MO 63143

Phone: (314) 781-2777  
FAX: (314) 781-2714

## Service Kit Instructions

### CONVEYOR BELT REMOVAL PROCEDURES

*For units without Master Links*



1) Turn off unit and allow to cool.



**2) WARNING - DISCONNECT UNIT FROM POWER SUPPLY OR TURN OFF AT WALL BREAKER BEFORE PROCEEDING TO NEXT STEP.**

3) Remove unload tray by unscrewing the two thumb screws on either side of the exit tray. Lift the tray up and away from the oven. Remove the Load Up and Unload Trays. (Fig. 1)

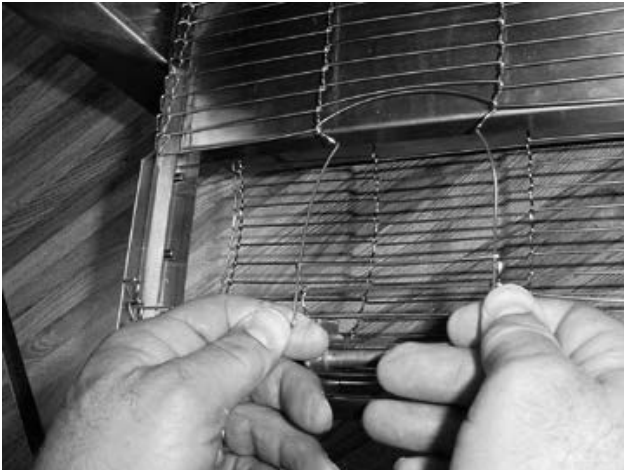
4) Remove Crumb Trays, Burn Guards & load-up trays.

5) Standing at the end on the unit, pick-up the conveyor belt and un-hook one end.

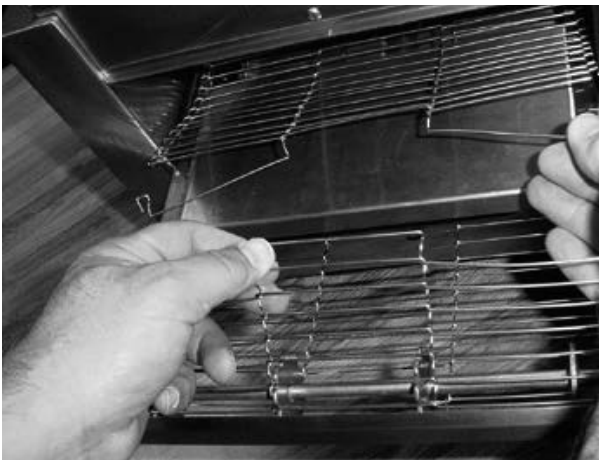




- 6) Trace that link down to the other end and unhook from the opposite side.



- 7) Using both hands, bring both ends together and push the link forward to disengage it from the belt.



- 8) Re-hook the loose ends back onto the previous link, to prevent the link from being damaged or bent.
- 9) Now that the link have been un-hooked, the Conveyor can now be carefully removed from the oven. Standing at the end of the oven. Starting with the end on bottom, roll the conveyor belt until it has been totally removed from the oven. Take careful notice being sure not to damage the heater tubes.

**NOTE: DO NOT ATTEMPT TO CLEAN THE HEATER TUBES.**



10) For heavy soiled Conveyor Belt, soak over night in hot soapy water.

11) Take this opportunity to clean and remove any loose materials the inside of the unit. Using a mild cleaner and damp cloth, carefully wipe the inside surfaces being sure **NOT** to clean the heater tubes. **Damage can occur to the HEATER tubes from improper cleaning.**

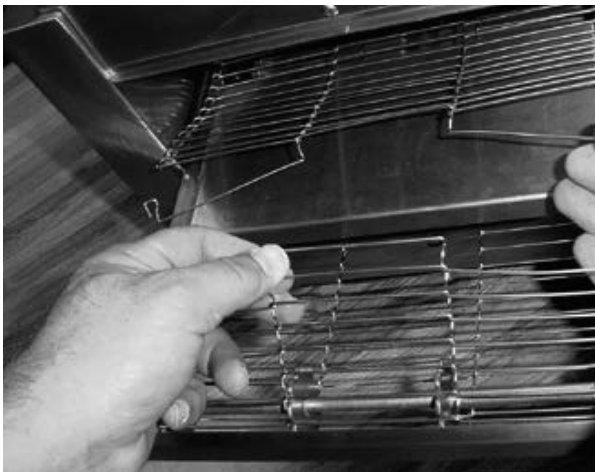
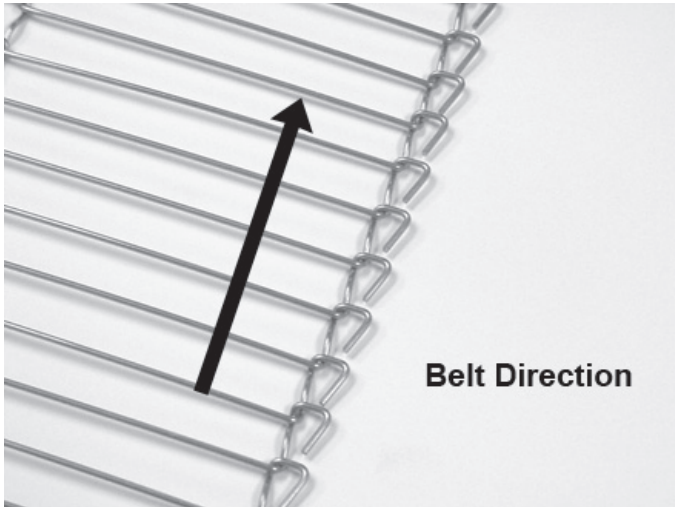


**DO NOT SPRAY CLEANING SOLUTIONS INTO OVEN CAVITY.**

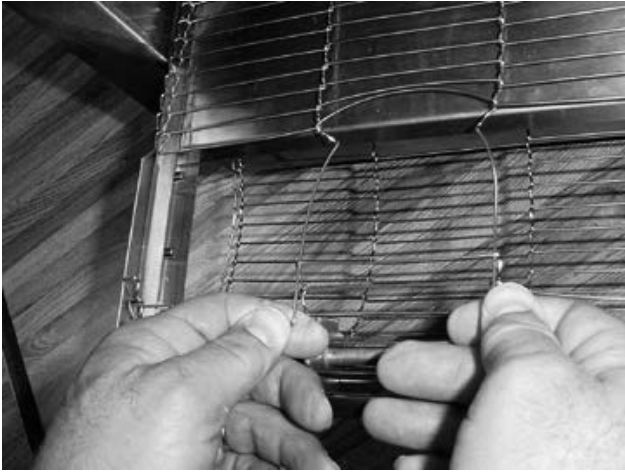
12) Reinstall Conveyor Belt by first laying the belt along bottom of oven cavity making sure the hooks on the sides of the belt will be facing the inside and the ends of the hooks will be pointing away from the direction of belt so not to catch on any internal components once put back into operation.

**NOTE: THE DIRECTION OF THE BELT.**

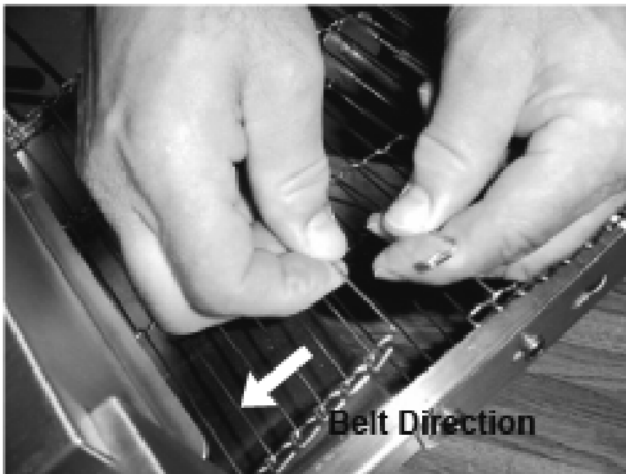
13) Next, pull one end of Conveyor Belt over the top of the sprockets, (being sure to line the links up properly with the sprockets) bringing the two ends together.



14) Un-hook both sides of the last link on the Conveyor.



- 15) Bring the two ends together and thread them through the middle section of the opposite end of the belt, using both hands.



- 16) Re-hook the two ends of the Conveyor, once again completing the Conveyor Belt system.
- 17) Examine the oven to assure proper installation, once satisfied, reinstall burn guard, crumb tray and load-up trays.
- 18) Reconnect oven to power supply and check for proper operation.

**IF ASSISTANCE IS REQUIRED, CALL THE STAR SERVICE TEAM AT 1-800-807-9054**

# ATTENTION! READ BEFORE USING THE TOASTER

This toaster was shipped in its current state to meet your program deadline.  
But there are changes to be made before starting to use it.

- A.** The crumb tray shipped with this unit is the wrong one. Using it will cause the croissants to get stuck and burn. **Remove the crumb tray and discard it.** A new crumb tray will be shipped to you in a few days.
- B.** The time and temperature for the food products is also wrong. You must reprogram the toaster using the instructions below



1. Plug in the toaster
2. Press the ON/OFF button

The display will read PREHT (pre-heat)

The toaster will start getting hot but the conveyor will not turn.

After approximately 1 minute the conveyor will start to move but the toaster will continue to pre-heat.

After approximately 3 minutes the display will change. It may read CROIS (croissant), MUFIN (muffin), PSTRY (pastry), or OTHER whichever button was last pushed by the factory





3. Press the CROIS (croissant) button. The display will read CROIS.

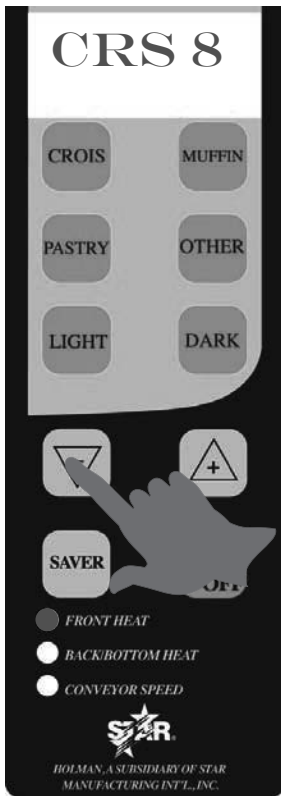


4. Press the UP and DOWN arrow buttons at the same time and hold for 3 seconds





5. The display will read CRS10.  
The FRONT HEAT indicator will light.



6. Press the DOWN arrow button twice to change the temperature to 8





7. Press the CROIS button. The display will read CRS10  
The BACK/BOTTOM HEAT indicator will light



8. Press the DOWN arrow button twice to change the temperature to 8





9. Press the CROIS button. The display will read CROIS70  
The CONVEYOR SPEED indicator will light



10. Press the DOWN arrow button until the display reads CRS45.





11. Press the CROIS button.

The display will read CROIS and the toaster is ready for use.

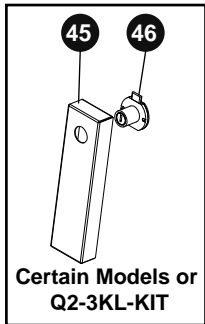
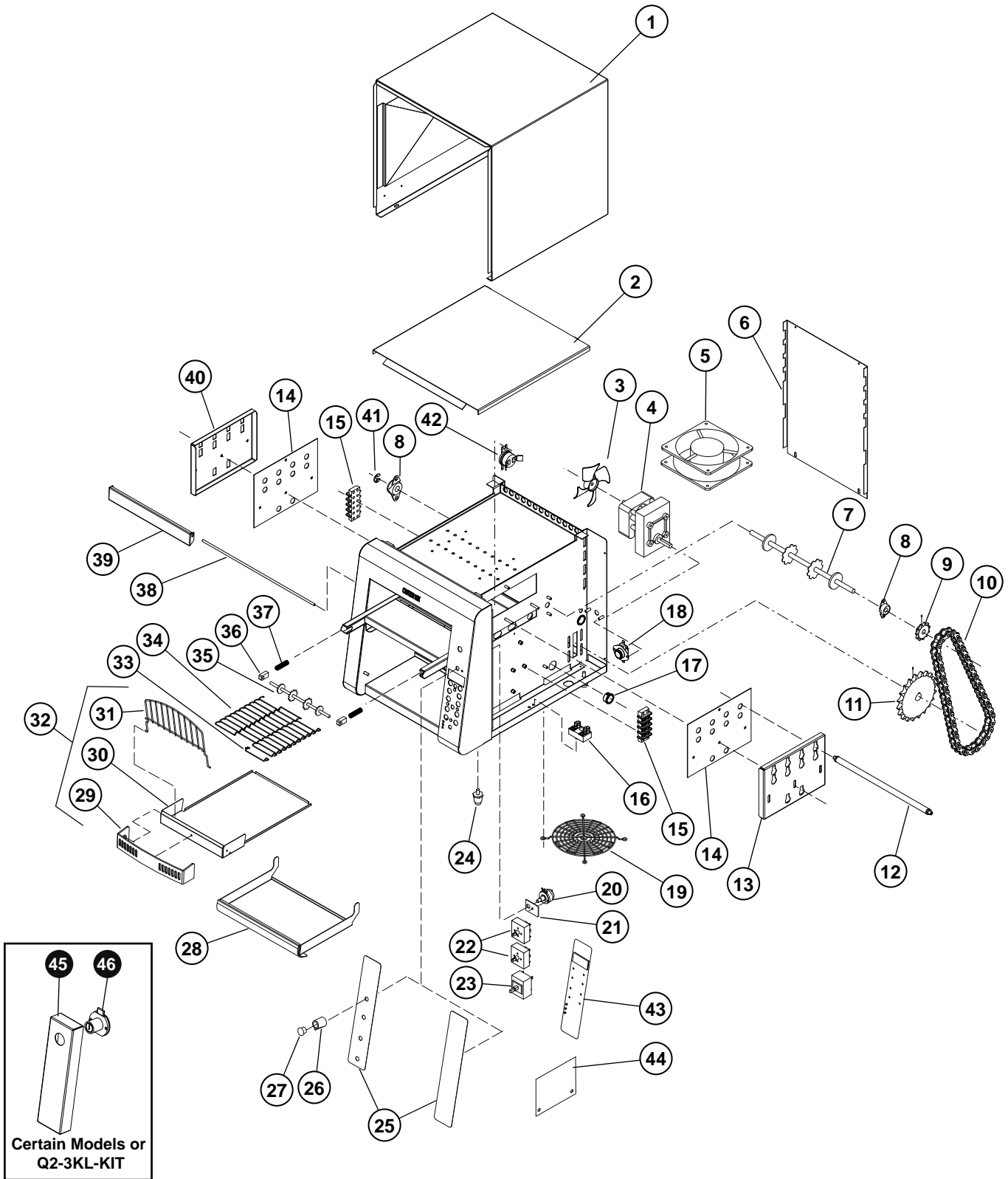
12. Start with step 3 again but substitute the CROIS button with the MUFFIN button. Change the settings to:

|                  |    |
|------------------|----|
| FRONT HEAT       | 8  |
| BACK/BOTTOM HEAT | 8  |
| CONVEYOR SPEED   | 25 |

13. Start with step 3 again but substitute the CROIS button with the PASTRY button. Change the settings to:

|                  |    |
|------------------|----|
| FRONT HEAT       | 8  |
| BACK/BOTTOM HEAT | 8  |
| CONVEYOR SPEED   | 45 |





SOME ITEMS ARE INCLUDED FOR  
ILLUSTRATIVE PURPOSES ONLY AND IN  
CERTAIN INSTANCES MAY NOT BE AVAILABLE

This drawing contains information confidential  
to Star Manufacturing International, Inc.  
No reproduction or disclosure of its  
contents is permitted.



**Model**  
Q2/Q2E/RCS2/Q3/Q3E Conveyor Toaster

# PARTS LIST

December 29, 2011, Rev. D

**Models:** Q2-500-120V, Q2E-500-120V, Q2-500-CUL20, Q2-600H-CE, Q2-600H-UK, Q2-600HF-208, Q2-600H-208/220/240V, Q2-600HS-208, Q2E-600H-208/240V, Q2-800-208/220/240V, Q2-800-240UK, Q2-800-230CE, Q2E-800-208/240V, Q2-1200B-208/240V, R2-12BSZ-208/240V, R2--1200-208/240V, R2-600HJ-208/240V, R2-800-208V **CONVEYOR TOASTERS**

| Fig No | Part No.  | Qty | Description                | Application   |
|--------|-----------|-----|----------------------------|---|
| 1      | HC-120258 | 1   | ENCLOSURE ASSY - QCS-2     | ALL   |
| 2      | HB-120270 | 1   | TOP BAFFLE ASSY QCS-2 LOW  | Q2-800-208/220/240V, Q2-1200B-208/240V, R2-12BSZ-208/240V, R2-1200B-208/240V, R2-600HJ-208/240V, Q2-500-120V, Q2-500-CUL20, Q2E-500-120V, Q2E-500CUL20, Q2-800-240UK  |
|        | HB-120280 |     | BAFFLE ASSEMBLY, HIGH      | Q2-600H-208/220/240V, Q2E-600H-208/240V, Q2E-800-208/240V, Q2-600H-CE   |
| 3      | 2R-Z8879  | 1   | 2-5/8" DIA. FAN BLACK CW   | OLDER MODEL MOTORS  |
| 4      | HA-120243 | 1   | MTR, ASSY QCS, 220/230/240 | Q2-600H-CE, Q2-600H-UK, Q2-800-240UK, Q2-800-230CE  |
|        | HA-120240 |     | MOTOR ASSY 120V            | Q2-500-120V, Q2-500-CUL20, Q2E-500-120V, Q2E-500CUL20, R2E-500-120V   |
|        | HB-120262 |     | MOTOR ASSY 208-240V        | Q2-600H-208/220/240V, Q2-800-208/220/240V, Q2-1200B-208/240V, R2-12BSZ-208/240V, R2-1200B-208/240V, R2-600HJ-208/240V, Q2E-600H-208V, Q2-800-240UK, R2E-800-208V  |
| 5      | 2U-200559 | 1   | FAN 120V                   | Q2E-500-120V, Q2E-500CUL20  |
|        | 2U-200560 |     | FAN 240V                   | Q2-600H-208/220/240V, Q2-800-208/220/240V, R2-600HJ-208/240V, Q2E-600H-208V, Q2E-800-208/240V, Q2-500-120V, Q2-500-CUL20, Q2E-500-120V, Q2-600H-CE, Q2-600H-UK, R2E-800-208V  |
|        | 2U-200561 |     | MOTOR, FAN240V 23BTM       | Q2-1200B-208/240V, R2-12BSZ-208/240V, R2-1200B-208/240V, R2E-12BK-208/240   |
| 6      | HC-Z10412 | 1   | BACK PANEL QCS-2           | ALL   |
| 7      | 2A-202900 | 1   | SHAFT, T710 DRIVE          | ALL   |
| 8      | HA-112263 | 2   | BEARING ASSY, PTFE/BRONZE  | Q2-600H-208/220/240V, Q2-800-208/220/240V, R2-600HJ-208/240V, Q2E-600H-208V, Q2E-800-208/240V, Q2-500-120V, Q2-500-CUL20, Q2E-500-120V, Q2E-500CUL20, Q2-600H-CE, Q2-600H-UK, R2E-800-208V, Q2-1200B-208/240V, R2-12BSZ-208/240V, R2-1200B-208/240V, R2E-12BK-208/240 |
| 9      | 2P-Z8779  | 1   | SPROCKET, 25P-11T .313 ID  | ALL   |
| 10     | 2P-150013 | 1   | DRIVE CHAIN #25            | Q2-600H-208/220/240V, Q2-800-208/220/240V, R2-600HJ-208/240V, Q2E-600H-208V, Q2E-800-208/240V, Q2-500-120V, Q2-500-CUL20, Q2E-500-120V, Q2E-500CUL20, R2E-800-208V  |
|        | 2P-150015 |     | CHAIN DRIVE #25            | Q2-1200B-208/240V, R2-12BSZ-208/240V, R2-1200B-208/240V, R2E-12BK-208/240   |
| 11     | 2P-200645 | 1   | SPROCKET, 25B17 X 5/16"    | Q2-600H-208/220/240V, Q2-800-208/220/240V, R2-600HJ-208/240V, Q2E-600H-208V, Q2E-800-208/240V, Q2-500-120V, Q2-500-CUL20, Q2E-500-120V, Q2E-500CUL20, Q2-600H-CE, Q2-600H-UK, R2E-800-208V  |
|        | 2P-200648 |     | SPROCKET, 25B32 X 5/16     | Q2-1200B-208/240V, R2-12BSZ-208/240V, R2-1200B-208/240V, R2E-12BK-208/240   |

2M-Z10651, Holman Conveyor Toaster

**IMPORTANT: WHEN ORDERING, SPECIFY VOLTAGE OR TYPE GAS DESIRED  
INCLUDE MODEL AND SERIAL NUMBER**

PAGE 1  
OF 4

Some items are included for illustrative purposes only and in certain instances may not be available.



# PARTS LIST

December 29, 2011, Rev. D

**Models:** Q2-500-120V, Q2E-500-120V, Q2-500-CUL20, Q2-600H-CE, Q2-600H-UK, Q2-600HF-208, Q2-600H-208/220/240V, Q2-600HS-208, Q2E-600H-208/240V, Q2-800-208/220/240V, Q2-800-240UK, Q2-800-230CE, Q2E-800-208/240V, Q2-1200B-208/240V, R2-12BSZ-208/240V, R2--1200-208/240V, R2-600HJ-208/240V, R2-800-208V **CONVEYOR TOASTERS**

| Fig No | Part No.  | Qty | Description                 | Application   |
|--------|-----------|-----|-----------------------------|---|
| 12     | 2N-209100 | 4   | ELEMENT, METAL 120V 430W    | R2E-500-120V  |
|        | 2N-209112 | 2   | ELEMENT, SERPENTINE, RCS    | R2-12BSZ-240V, R2-1200B-240V, R2E-12BK-240  |
|        | 2N-209114 |     | SERPENTINE ELEMENT RCS      | R2-12BSZ-208V, R2-1200B-208V, R2E-12BK-208  |
|        | 2N-209194 | 4   | ELEMENT METAL, 200W/120V    | R2-12BSZ-240V, R2-1200B-240V, R2E-12BK-240  |
|        | 2N-209198 |     | ELEMENT METAL, 200W/104V    | R2-12BSZ-208V, R2-1200B-208V, R2E-12BK-208  |
|        | 2N-209199 |     | METAL ELEMENT, 500W, 104V   | R2-600HJ-208V   |
|        | 2N-209216 | 4   | ELEMENT, METAL, 500W, 120V  | R2-600HJ-240V   |
|        | 2N-209197 |     | ELEMENT METAL, 700W/104V    | R2-600H-208V, R2-800-208V, R2E-800-208V   |
|        | HO-197842 | 6   | HEATERTUBE, QUARTZ          | Q2-600H-240V, Q2-800-240V, Q2E-600H-240V, Q2E-600H-240V, Q2-600H-UK, Q2-800-240UK   |
|        | HD-198042 |     | HEATERTUBE, QUARTZ          | Q2-500-120V, Q2-500KL-120, Q2E-500-120V, Q2E-500CUL20   |
|        | HG-198062 |     | HEATERTUBE, QCS-2-1200B     | Q2-1200B-208V   |
|        | HG-198064 |     | HEATERTUBE, QCS-2-1200B     | Q2-1200B-240V   |
|        | HO-197841 | 4   | HEATERTUBE, QUARTZ          | Q2-600H-208V, Q2-800-208V, Q2E-600H-208V, Q2E-600H-208V, Q2E-800-208V, Q2-500-120V, Q2-500-CUL20  |
|        | HO-197844 |     | HEATERTUBE, QUARTZ          | Q2-600H-220V, Q2-800-220V, Q2E-600H-220V, Q2-600H-CE  |
| 13     | HC-Z10390 | 1   | ELEMENT RETAINER, RIGHT QCS | Q2-600H-208/220/240V, Q2-800-208/220/240V, Q2E-600H-208V, Q2E-800-208/240V, R2-600H, R2-800   |
|        | HC-Z10440 |     | ELEMENT RETAINER, RIGHT     | Q2-1200B-208/240V   |
|        | HC-Z10443 | 1   | HEATER TUBE RETAINER        | R2-12BSZ-208/240V, R2-1200B-208/240V, R2E-12BK-208  |
|        | HC-Z11288 |     | RETAINER, RCS ELEMENT       | R2-600H, R2-600HJ<br>R2-800, R2E-500, R2E-800   |
| 14     | HB-Z10857 | 2   | ELEMENT GUIDE PLATE         | Q2-500-120V, Q2-500-CUL20, Q2E-500-120V, Q2E-500CUL20   |
|        | HC-Z10388 |     | ELEMENT GUIDE PLATE         | Q2-600H-208/220/240V, Q2-800-208/220/240V, Q2E-600H-208V, Q2E-800-208/240V, Q2-600H-CE, Q2-600H-UK, R2-800, R2E-800   |
|        | HC-Z10439 |     | ELEMENT GUIDE PLATE 1200    | Q2-1200B-208/240V   |
|        | HC-Z10442 |     | ELEMENT GUIDE PLATE SERP    | R2-12BSZ-208/240V, R2-1200B-208/240V, R2E-12BK-208  |
| 15     | 2E-Z10406 | 3   | TERMINAL BLOCK 4 POS.       | R2E-800-208V  |
|        |           | 2   |                             | Q2E-300H-120, Q2E-500-120V, Q2E-500CUL20, Q2-600H-208/220/240V, Q2-800-208/220/240V, Q2-1200B-208/240V, R2-12BSZ-208/240V, R2-1200B-208/240V, Q2-500-120V, Q2-500-CUL20, Q2E-500-120V, Q2E-500CUL20, Q2-600H-CE, Q2-600H-UK, R2E-500-120V, R2E-12BK-208 |
|        |           | 1   |                             | Q2E-600H-208/240V, Q2E-800-208/240V   |
| 16     | 2E-Z9736  | 1   | TERMINAL BLOCK - POWER      | Q2-600H-208/220/240V, Q2-800-208/220/240V, Q2-1200B-208/240V, R2-12BSZ-208/240V, R2-1200B-208/240V, R2-600HJ-208/240V, Q2E-600H-208V, Q2E-800-208/240, Q2-500-120V, Q2-600H-CE, Q2-600H-UK  |
| 17     | 2K-200464 | 2   | BUSHING WIRE RING 7/8"      | Q2-600H-208/220/240V, Q2-800-208/220/240V, Q2E-600H-208V, Q2E-800-208/240V, Q2-500-120V, Q2-500-CUL20, Q2E-500-120V, Q2E-500CUL20, Q2-600H-CE, Q2-600H-UK   |
|        |           | 1   |                             | Q2-1200B-208/240V, R2-12BSZ-208/240V, R2-1200B-208/240V, R2-600HJ-208/240V  |
| 18     | 2E-200566 | 1   | SWITCH, RESET               | ALL   |
| 19     | 2R-200562 | 1   | FAN GUARD                   | ALL   |

2M-Z10651, Holman Conveyor Toaster

**IMPORTANT: WHEN ORDERING, SPECIFY VOLTAGE OR TYPE GAS DESIRED  
INCLUDE MODEL AND SERIAL NUMBER**

PAGE 2  
OF 4

Some items are included for illustrative purposes only and in certain instances may not be available.



# PARTS LIST

December 29, 2011, Rev. D

**Models:** Q2-500-120V, Q2E-500-120V, Q2-500-CUL20, Q2-600H-CE, Q2-600H-UK, Q2-600HF-208, Q2-600H-208/220/240V, Q2-600HS-208, Q2E-600H-208/240V, Q2-800-208/220/240V, Q2-800-240UK, Q2-800-230CE, Q2E-800-208/240V, Q2-1200B-208/240V, R2-12BSZ-208/240V, R2--1200-208/240V, R2-600HJ-208/240V, R2-800-208V **CONVEYOR TOASTERS**

| Fig No | Part No.  | Qty | Description                 | Application  |
|--------|-----------|-----|-----------------------------|--|
| 20     | HA-120239 | 1   | SPEED CONTROL ASSEMBLY      | Q2-500-120V, Q2-500-CUL20  |
|        | HB-120259 |     | SPEED CONTROL ASSY 250      | Q2-1200B-208/240V, R2-12BSZ-208/240V, R2-1200B-208/240V  |
|        | HB-120261 |     | SPEED CONTROL ASSY 500      | Q2-600H-208/220/240V, Q2-800-208/220/240V, Q2-600H-CE, Q2-600H-UK, R2-600HJ-208/240V, R2-800-208V  |
| 21     | 2P-402728 | 1   | POT, ANTI SPIN PLATE        | ALL NON-ELECTRONIC   |
| 22     | 2J-200538 | 2   | SWITCH, EGO 240V INFINITE   | Q2-600H-208/220/240V, Q2-800-208/220/240V, Q2-1200B-208/240V, R2-12BSZ-208/240V, R2-1200B-208/240V, R2-600HJ-208/240V, Q2-500-120V,              |
|        | 2J-200539 |     | SWITCH, EGO 120V INFINITE   | Q2-500-120V, Q2-500KL-120, Q2-500-CUL20  |
| 23     | 2E-200551 | 1   | SWITCH ROTARY               | Q2-600H-208/220/240V, Q2-800-208/220/240V, Q2-1200B-208/240V, R2-12BSZ-208/240V, R2-1200B-208/240V, R2-600HJ-208/240V, Q2-500-120V, Q2-500-CUL20 |
| 24     | 2R-200709 | 4   | LEG 1" CHOME PLASTIC        | Q2-600H-208/220/240V, Q2-800-208/220/240V, Q2-1200B-208/240V, R2-12BSZ-208/240V, R2-1200B-208/240V, R2-600HJ-208/240V, Q2E-600H-208V             |
| 25     | 2M-200864 | 1   | LABEL, QCS-2 & 3 CONTROLS   | Q2-600H-208/220/240V, Q2-800-208/220/240V, Q2-500-120V, Q2-500-CUL20, Q2-600H-CE, Q2-600H-UK   |
|        | 2M-200894 |     | LABEL, QCS-2&3 BAGEL CONT   | Q2-1200B-208/240V  |
|        | 2M-201810 |     | LABEL, RCS-2&3 BAGEL CONT   | R2-12BSZ-208/240V, R2-1200B-208/240V, R2-600HJ-208/240V, R2-800-208V   |
|        | 2M-201813 |     | LABEL, QCSE                 | Q2E-600H-208V, Q2E-500-120V, Q2E-500CUL20  |
|        | 2M-Z13358 |     | LABEL - CONTROL Q2E-600HW   | Q2E-600HW  |
|        | 2M-Z13864 |     | LABEL - CONTROL PANEL R2E   | R2E-500-120V, R2E-800-208V   |
|        | 2M-Z14858 |     | LABEL - CONTROL R2E-12BK    | R2E-12BK-208/240   |
| 26     | 2R-200768 | 1   | KNOB, CNTRL Q SERIES, SPEED | Q2-600H-208/220/240V, Q2-800-208/220/240V, Q2-500-120V, Q2-500-CUL20, Q2-600H-CE, Q2-600H-UK   |
|        | 2R-200769 | 3   | KNOB, POWERSAVER Q SERIES   | Q2-600H-208/220/240V, Q2-800-208/220/240V, R2-600HJ-208V, Q2-500-120V, Q2-600H-CE, Q2-600H-UK  |
|        |           | 1   | KNOB, POWERSAVER Q SERIES   | Q2-1200B-208/240V, R2-12BSZ-208/240V, R2-1200B-208/240V, R2-600HJ-208/240V   |
| 27     | 2R-200708 | 4   | KNOB, CONTROL CAP           | Q2-600H-208/220/240V, Q2-800-208/220/240V, R2-600HJ-208/240V, Q2-500-120V, Q2-500-CUL20, Q2-600H-CE, Q2-600H-UK                                  |
|        |           | 2   | KNOB, CONTROL CAP           | R2-12BSZ-208/240V, R2-1200B-208/240V   |
| 28     | HA-100560 | 1   | TRAY, PULL OUT QCS, 10"     | ALL  |
|        | HF-100562 |     | SECURITY TRAY, PULL OUT     | ALL SECURITY UNITS   |
| 29     | 2R-200787 | 1   | QCS 1&2 CRUMB TRAY GUARD    | ALL  |
| 30     | HC-402457 | 1   | CRUMB TRAY, QCS-2           | ALL  |
|        | HF-100656 |     | SECURITY CRUMB TRAY, QCS    | Q2-600HS-208   |
|        | HB-120309 |     | CRMB TRAY ASSY, Q2E-600HW   | Q2E-600HW-208, 240   |
|        | HB-120311 |     | CRUMB TRAY ASSY             | R2E-12BK-208   |
| 31     | 2B-200763 | 1   | LOADUP, 10 EURO, WIRE       | ALL EXCEPT R2E-12BK  |
| 32     | HF-101115 | 1   | TRAY, CRUMB TRAY ASSY       | CERTAIN MODELS   |
| 33     | 2B-Z10675 | 2   | MASTERLINK 10" CONV         | ALL  |
| 34     | SP-160027 | 1   | BELT, CONVEYOR 10"          | ALL  |

2M-Z10651, Holman Conveyor Toaster

**IMPORTANT: WHEN ORDERING, SPECIFY VOLTAGE OR TYPE GAS DESIRED  
INCLUDE MODEL AND SERIAL NUMBER**

PAGE 3  
OF 4

Some items are included for illustrative purposes only and in certain instances may not be available.



# PARTS LIST

December 29, 2011, Rev. D

**Models:** Q2-500-120V, Q2E-500-120V, Q2-500-CUL20, Q2-600H-CE, Q2-600H-UK, Q2-600HF-208, Q2-600H-208/220/240V, Q2-600HS-208, Q2E-600H-208/240V, Q2-800-208/220/240V, Q2-800-240UK, Q2-800-230CE, Q2E-800-208/240V, Q2-1200B-208/240V, R2-12BSZ-208/240V, R2--1200-208/240V, R2-600HJ-208/240V, R2-800-208V **CONVEYOR TOASTERS**

| Fig No    | Part No.      | Qty              | Description                | Application  |
|-----------|---------------|------------------|----------------------------|--|
| 35        | 2A-202904     | 1                | SHAFT, 210HX IDLER         | ALL  |
| 36        | 2P-200700     | 2                | SPRNG LD BEARING TEFLON    | ALL  |
| 37        | 2P-200736     | 2                | 2" INCH BEARING SPRING     | ALL  |
| 38        | HC-402134     | 1                | NC10H SHUTTER ROD          | Q2-600H-208/220/240V, R2-600HJ-208V/240V, Q2E-600H-208V  |
| 39        | HC-402206     | 1                | HEAT SHUTTER, SWINGING     | Q2-600H-208/220/240V, R2-600HJ-208V/240V, Q2E-600H-208V  |
| 40        | HC-Z10389     | 1                | ELEMENT RETAINER, LEFT QCS | Q2-600H-208/220/240V, Q2-800-208/220/240V, Q2E-600H-208V, Q2E-800-208/240V, Q2-500-120V, Q2-500-CUL20, Q2E-500CUL20, Q2-600H-CE, R2-600H, R2-800 |
|           | HC-Z10441     |                  | ELMNT RETAINER, LEFT QCS   | Q2-1200B-208/240V  |
| 41        | 2A-200284     | 1                | E-CLIP 5/16"               | ALL  |
| 42        | 2E-200574     | 1                | SWITCH, FAN CERAMIC        | Q2-1200B-208/240V, R2-12BSZ-208/240V, R2-1200B-208/240V  |
| 43        | 2U-200591     | 1                | QCSE CONTROL BOARD         | Q2E-600H-208/240V, Q2E-800-208/240V, Q2E-500-120V, R2-800-208V, R2E-500-120V   |
|           | 2E-Z13360     |                  | CONTROL BOARD Q2E-600HW    | Q2E-600HW  |
|           | 2E-Z14864     |                  | CONTROL BOARD R2E-12BK     | R2E-12BK-208/240   |
| 44        | 2U-200592     | 1                | QCSE POWER BOARD           | Q2E-600H-208/240V, Q2E-800-208/240V, Q2E-500-120V, R2E-12BK-208/240  |
|           | HD-Z13861     |                  | POWER BOARD 120V           | R2E-500-120V   |
| 45        | HF-402536     | 1                | SECURITY LOCKING COVER     | ALL SECURITY UNITS   |
| 46        | 2R-200752     | 1                | KEYLOCKING SPEC KEYED      | ALL SECURITY UNITS   |
|           | HA-Z11222     |                  | KEYLOCK - DRILLED          | Q2-600HS-208   |
| NI        | 2K-200463     | 1                | BUSHING CORD HEYCO 1247    | Q2-600H-208/220/240V, Q2-800-208/220/240V, R2-600HJ-208V   |
|           | 2K-200465     |                  | BUSHING CORD HEYCO12/3 BL  | Q2-1200B-208/240V, R2-12BSZ-208/240V, R2-1200B-208/240V  |
|           | 2K-Y2968      |                  | BUSHING - HEYCO 7W-2       | Q2E-600H-208/240V, Q2E-800-208/240V, Q2E-500-120V, R2-800-208V, R2E-500-120V, R2E-12BK-208   |
| NI        | 2P-200267     | 1                | WIRE BRUSH                 | R2-1200B-208V  |
| NI        | D9-GR0216     | 1                | POWER CORD ASSY-UK         | Q2-800-240UK   |
| NI        | 2E-200375     | 1                | CORD SET, 14/3 120V EZ10   | R2E-500-120V   |
|           | 2E-Z13364     |                  | CORD SET 14GA. 6-20P 80"   | Q2E-600HW208, Q2E-600HW240   |
|           | HA-120241     |                  | CORD SET ASSEMBLY QCS-1    | Q2-500-120V  |
|           | HA-120242     |                  | CORDSET ASSY QCS-1-CUL20   | Q2-500-CUL20   |
|           | HB-120267     |                  | CORD SET R2-1200B          | Q2-600H-220V, R2-1200B-208V, Q2-600H-CE  |
|           | HB-120268     |                  | CORD SET ASSY R2-12BSZ     | R2-12BSZ-208/240V, R2-1200B-208/240V   |
|           | HB-120269     |                  | CORD ASSY 6-20P W/3 #10R   | Q2-600H-208/240V, Q2-800-208/220V, Q2-1200B-208V, R2-600HJ-208/240V  |
|           | HB-120274     |                  | CORD ASSY 6-20 QCSE        | Q2E-600H-208/240V, Q2E-800-208/240V  |
|           | HB-120279     |                  | CORD ASSEMBLY CEE7-7       | Q2-800-230CE   |
|           | HD-140078     |                  | CORD SET, QCSE 2, 120V     | Q2E-500CUL20   |
| HB-120312 | CORD SET ASSY | R2E-12BK-208/240 |                            |  |
| NI        | HG-402144     | 1                | FAN SWITCH BRACKET         | R2-12BSZ-208/240V, R2-1200B-208V   |

2M-Z10651, Holman Conveyor Toaster

**IMPORTANT: WHEN ORDERING, SPECIFY VOLTAGE OR TYPE GAS DESIRED  
INCLUDE MODEL AND SERIAL NUMBER**

PAGE 4  
OF 4

Some items are included for illustrative purposes only and in certain instances may not be available.





STAR MANUFACTURING INTERNATIONAL INC.  
#10 SUMNER DRIVE, ST. LOUIS, MO. 63143, USA

DR. MH CK. DATE 5-17-11

TOLERANCES UNLESS OTHERWISE NOTED  
FRACTIONS ±1/64 DECIMALS ±.005 ANGLES ±1°

MATERIAL

LABEL STOCK: 60# WHT. PREMIUM

MODEL NO.

R2E-12BK

PART NO.

2M-214866

FINISH

SEMI GLOSS

TITLE

LABEL - W.D. R2E-12BK

REVISIONS

LTR DATE

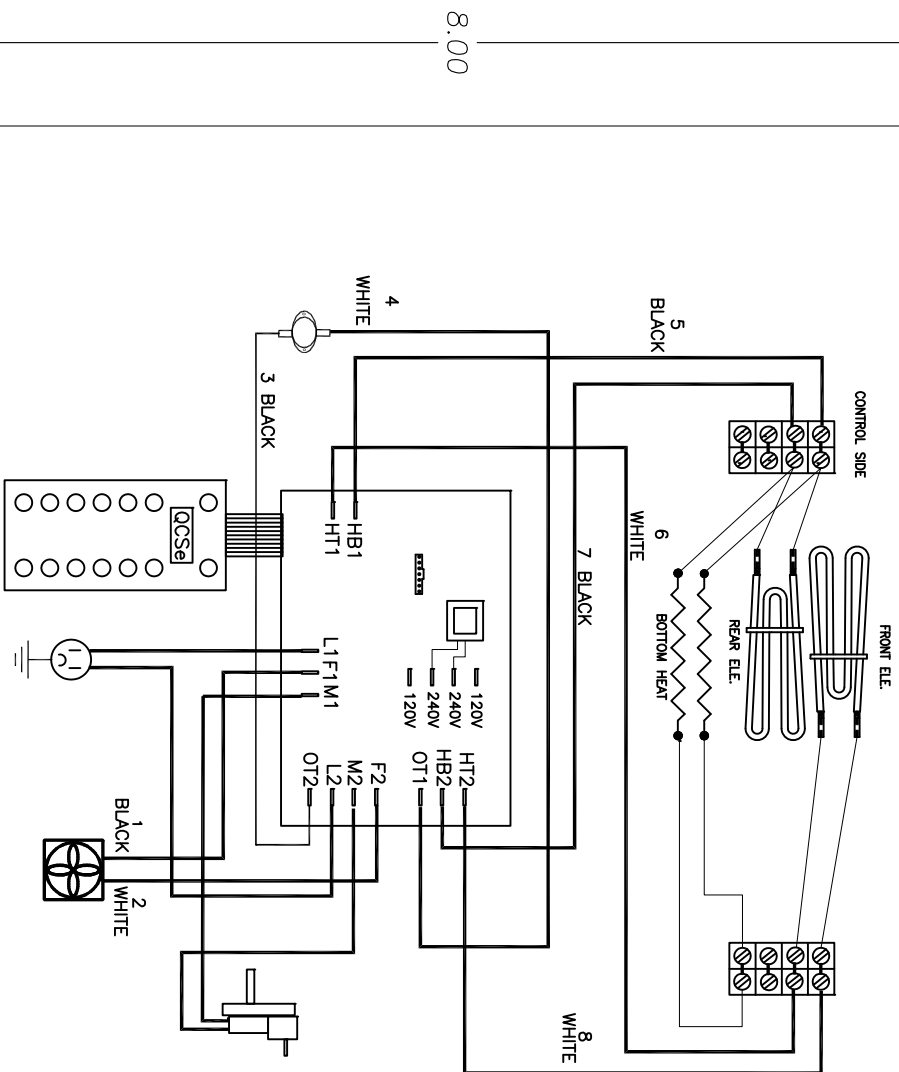
DESCRIPTION OF CHANGE

DR

THIS DRAWING CONTAINS INFORMATION CONFIDENTIAL TO STAR MFG. INT'L. INC.  
NO REPRODUCTION OR DISCLOSURE OF ITS CONTENTS IS PERMITTED.

- NOTES:
1. LABEL STOCK: 60# WHITE PREMIUM SEMI GLOSS PAPER W/ HEAT SENSITIVE LAMINATE
  2. ACRYLIC PERMANENT ADHESIVE OR APPROVED EQUAL.
  3. BLACK TEXT AND LINES ON WHITE BACKGROUND.

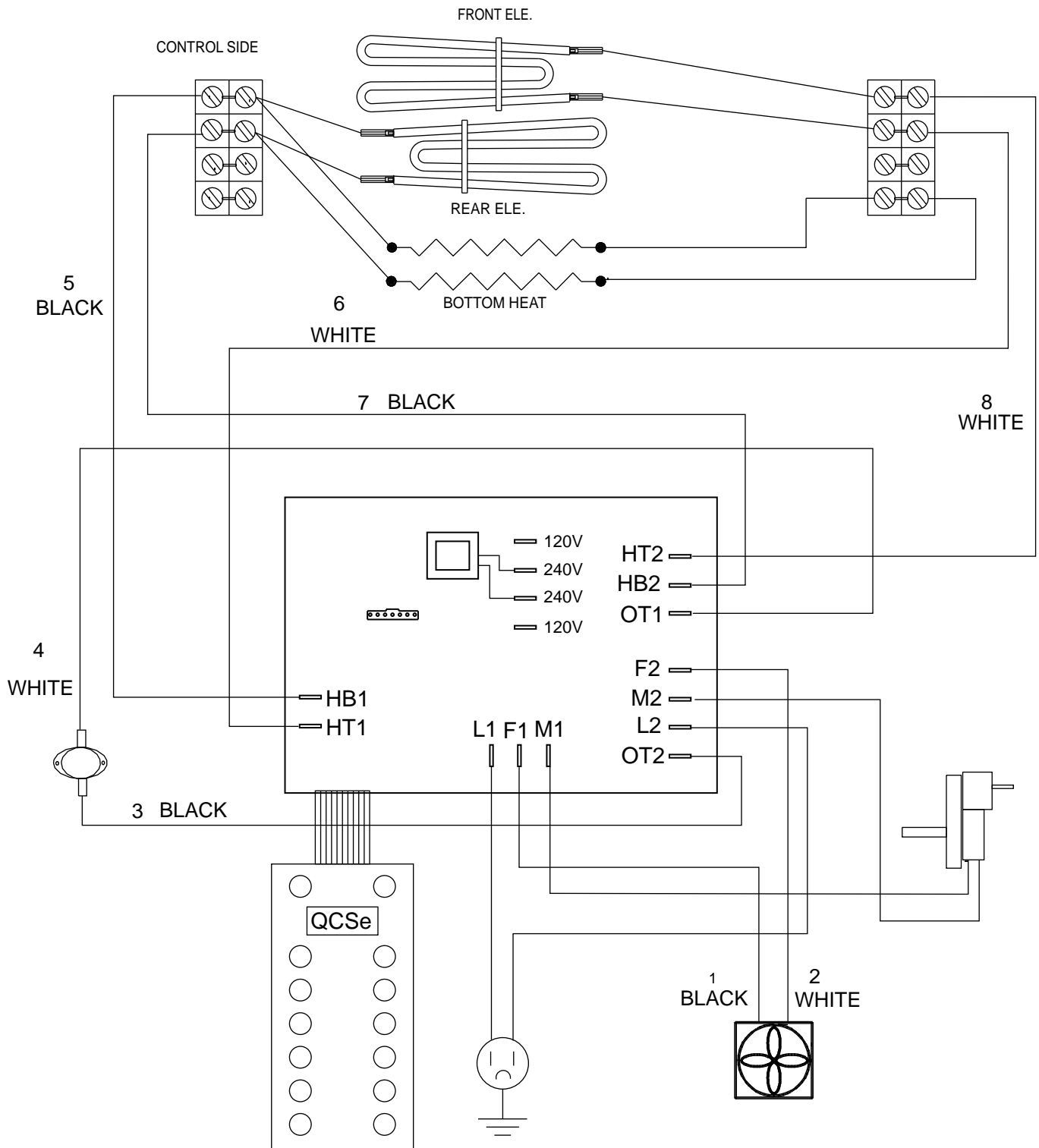
R2E-12BK WIRING DIAGRAM



8.00

5.00

W/D# 2M-214866  
DATE CODE - 0511 REV-



SOME ITEMS ARE INCLUDED FOR ILLUSTRATIVE PURPOSES ONLY AND IN CERTAIN INSTANCES MAY NOT BE AVAILABLE

R2E-12BK WIRING DIAGRAM



SK2512

REV.- 5-18-11