



HEAVY DUTY DRAWER STYLE FOOD WARMERS

MODELS

SDW1

SDW2

SDW3

SDW1N

SDW2N

SDW3N

SDW1W

SDW2C

SDW3C

SDW2W

SDW2NC

SDW3NC

Installation and Operation Instructions

2M-Z4061 Rev.C 9/27/2011



SDW3NC



SAFETY SYMBOL



These symbols are intended to alert the user to the presence of important operating and maintenance instructions in the manual accompanying the appliance.

RETAIN THIS MANUAL FOR FUTURE REFERENCE NOTICE

Using any part other than genuine Star factory supplied parts relieves the manufacturer of all liability.

Star reserves the right to change specifications and product design without notice. Such revisions do not entitle the buyer to corresponding changes, improvements, additions or replacements for previously purchased equipment.

Due to periodic changes in designs, methods, procedures, policies and regulations, the specifications contained in this sheet are subject to change without notice. While Star International Holdings Inc., Company exercises good faith efforts to provide information that is accurate, we are not responsible for errors or omissions in information provided or conclusions reached as a result of using the specifications. By using the information provided, the user assumes all risks in connection with such use.

MAINTENANCE AND REPAIRS

Contact your local authorized service agent for service or required maintenance.

Please record the model number, serial number, voltage and purchase date in the area below and have it ready when you call to ensure a faster service.

Model No. _____

Serial No. _____

Voltage _____

Purchase Date _____

Authorized Service Agent Listing

Reference the listing provided with the unit

or

for an updated listing go to:

Website: www.star-mfg.com
E-mail Service@star-mfg.com

Service Help Desk

Business Hours: 8:00 am to 4:30 p.m. Central Standard Time

Telephone: (314) 678-6303

Fax: (314) 781-2714

E-mail Parts@star-mfg.com
Service@star-mfg.com
Warranty@star-mfg.com

Website: www.star-mfg.com

Mailing Address: Star International Holdings Inc., Company
10 Sunnen Drive
St. Louis, MO 63143
U.S.A

SPECIFICATIONS										
Model	Voltage	Hz	Phase	Watts	Plug	Dimensions				
						Length	Depth	Height		
SDW1, SDW1W	120V	60	1ph	475	NEMA 5-15P	29 1/4"	21 13/16"	11 1/4" (28.58cm)		
	220/240V	50/60			CEE 7/7	(74.3cm)	(55.4cm)			
SDW1N	120V	60		403/475	NEMA 5-15P	21 1/4"	29 13/16"		24 7/16" (62.07cm)	
	220/240V	50/60			CEE 7/7	(53.98cm)	(75.72cm)			
SDW2, SDW2C, SDW2W	120V	60		925	NEMA 5-15P	29 1/4"	21 13/16"			34 5/8" (78.94cm)
	220/240V	50/60			CEE 7/7	(74.3cm)	(55.4cm)			
SDW2N, SDW2NC	120V	60		781/925	NEMA 5-15P	21 1/4"	29 13/16"	24 7/16" (62.07cm)		
	220/240V	50/60			CEE 7/7	(53.98cm)	(75.72cm)			
SDW3, SDW3C	120V	60		1,375	NEMA 5-15P	29 1/4"	21 13/16"		34 5/8" (78.94cm)	
	220/240V	50/60			CEE 7/7	(74.3cm)	(55.4cm)			
SDW3N, SDW3NC	120V	60		1,375	NEMA 5-15P	21 1/4"	29 13/16"			24 7/16" (62.07cm)
	220/240V	50/60			CEE 7/7	(53.98cm)	(75.72cm)			

Note: "N" versions have the pan positioned with the 20" dimension front to back



CAUTION

This equipment is designed and sold for commercial use only by personnel trained and experienced in its operation and is not sold for consumer use in and around the home nor for use directly by the general public in food service locations.

INSTALLATION AND OPERATING INSTRUCTIONS

These models are equipped for the voltage and wattage indicated on the nameplate. They are designed to operate on alternating current, two wire single-phase service only. A three wire grounding cord with a three-prong attachment plug is provided.



WARNING

DO NOT CONNECT TO DIRECT CURRENT (DC).

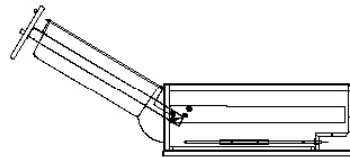


Figure 1

INSTALLATION

1. Single drawer units are supplied with 1" feet pre-assembled to the unit. Two and three drawer units are supplied with 4" feet. These feet must be assembled to the bottom of the unit once the shipping pallet has been removed. Do not install without the feet provided. Contact the factory or one of its representatives for optional 4" feet for single drawer units.
2. Place the unit on a flat level surface.
3. Thoroughly clean the unit before placing it in service. Remove the drawer by extending it fully then lifting slightly on the front of the drawer to clear the drawer stop. Replace the drawer by reversing this procedure. See Figure 1.
4. Connect the power cord to the appropriate receptacle.
5. Units of the same series (either narrow or wide construction) can be stacked directly on each other when the feet are removed. Do not stack more than four drawers high. To prevent a tipping hazard do not open more than one heavily loaded drawer at a time. Do not place more than 30 lbs. of food in each drawer.



CAUTION

DO NOT IMMERSE THE UNIT IN WATER. DO NOT USE PRESSURIZED WATER TO CLEAN THE UNIT. DO NOT ALLOW ANY LIQUID TO ENTER THE CONTROL COMPARTMENT THROUGH THE LOUVERED AIR OPENINGS.

CLEANING

1. Disconnect the unit from the electrical power source before cleaning.
2. Allow the unit to cool thoroughly before cleaning. Avoid contact with the heated parts of the unit.
3. Clean the unit daily. Use a soft cloth and mild detergent to keep the stainless steel panels free of scratches. If an abrasive cleaner is used rub in the direction of the grain to prevent unsightly scratches to the finish.

OPERATION

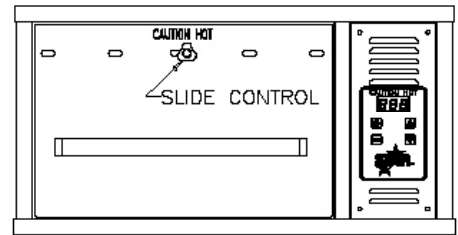
1. The temperature control will regulate temperatures inside the drawer cavity and is adjustable from 100° to 200°F. Pressing the ON/OFF button of the temperature control activates the unit. This control will provide close regulation of the temperature in the drawer and give an indication of the food temperature. The setpoint is displayed by pressing and holding the TEMP button. Adjust the regulated temperature by pressing the + or – buttons while holding the TEMP button down. The actual drawer temperature is displayed when no buttons are pressed and the control is in the ON mode. The dot in the lower corner of the display indicates when the control is calling for heat.



FOOD TEMPERATURE WILL VARY FROM THE CONTROL SET TEMPERATURE BASED ON THE MOISTURE CONTENT AND CONSISTENCY OF THE FOOD PRODUCT

2. Each drawer is equipped with a moisture control. Turn the black knob above the drawer handle ¼ turn to the left to free the control adjustment. Slide the knob to align the holes in the drawer front and vent any excess moisture to produce a crisp product. Position the knob so that the holes are closed to produce a moist product.

Lock the control in position by turning the knob ¼ turn to the right. Different combinations of food products and heat settings will require different moisture settings. Breads and rolls are difficult to hold for prolonged periods of time because of the low moisture content of the product. These products are best held between 120° and 140°F. To retain the moisture of these products place them in a plastic bag when in the warmer. Time and experience is required to determine the optimum combination of temperature and moisture setting to provide a palatable product that will hold for an extended period of time.



3. Preheat the unit for ½ hour before placing food in the warmer. This unit is intended to hold hot food at the proper serving temperature. Foods should be heated to the proper temperature prior to being placed in the warmer. Most meat and poultry foods are best held between 160-175°F.
4. Optimum holding temperatures for specific foods are based on the products moisture content, product density, volume and proper serving temperature. Safe sanitary temperatures must be considered when determining the length of time a product can be held and remain palatable. Allow foods that are heated to extreme temperatures during preparation to cool before being placed in the warmer to prevent the accumulation of excess condensation.



TO PREVENT A TIPPING HAZARD AND POTENTIAL BODILY INJURY DO NOT OPEN MORE THAN ONE HEAVILY LOADED DRAWER AT A TIME. IT IS NOT RECOMMENDED TO PLACE MORE THAN 30 LBS OF FOOD IN EACH DRAWER.

THOROUGHLY INSPECT YOUR UNIT ON ARRIVAL

This unit has been tested for proper operation before leaving our plant to insure delivery of your unit in perfect condition. However, there are instances in which the unit may be damaged in transit. In the event you discover any type of damage to your product upon receipt, you must immediately contact the transportation company who delivered the item to you and initiate your claim with same. If this procedure is not followed, it may affect the warranty status of the unit.

LIMITED EQUIPMENT WARRANTY

All workmanship and material in Star products have a one (1) year limited warranty on parts & labor in the United States and Canada. Such warranty is limited to the original purchaser only and shall be effective from the date the equipment is placed in service. Star's obligation under this warranty is limited to the repair of defects without charge, by the factory authorized service agency or one of its sub-agencies. Models that are considered portable (*see below*) should be taken to the closest Star service agency, transportation prepaid.

- > Star will not assume any responsibility for loss of revenue.
- > On all shipments outside the United States and Canada, see International Warranty.
- * The warranty period for the Ultra-Max, Hot Plates, Griddles, Charbroilers is (3) years parts & labor.
- * The warranty period for the Star-Max, Charbroilers, Griddles, Hot Plates, Fryers & Finishing Oven is (2) years parts & labor.
- * The warranty period for the JetStar six (6) ounce & Super JetStar eight (8) ounce series popcorn machines is two (2) years.
- * The warranty period for the Chrome-Max Griddles is five (5) years on the griddle surface. See detailed warranty provided with unit.
- * The warranty period for Teflon/Dura-Tec coatings is one year under normal use and reasonable care. This warranty does not apply if damage occurs to Teflon/Dura-Tec coatings from improper cleaning, maintenance, use of metallic utensils, or abrasive cleaners, abrasive pads, product identifiers and point-of-sale attachments, or any other non-food object that comes in continuous contact with the roller coating. This warranty does not apply to the "non-stick" properties of such materials.
- > This warranty does not apply to "Special Products" but to regular catalog items only. Star's warranty on "Special Products" is six (6) months on parts and ninety (90) days on labor.
- > This warranty does not apply to any item that is disassembled or tampered with for any purpose other than repair by a Star Authorized Service Center or the Service Center's sub-agency.
- > This warranty does not apply if damage occurs from improper installation, misuse, wrong voltage, wrong gas or operated contrary to the Installation and Operating instructions.
- > This warranty is not valid on Conveyor Ovens *unless* a "start-up/check-out" has been performed by a Factory Authorized Technician.

PARTS WARRANTY

Parts that are sold to repair out of warranty equipment are warranted for ninety (90) days. The part only is warranted, the labor to replace the part is **NOT** warranted.

SERVICES NOT COVERED BY WARRANTY

1. Travel time and mileage rendered beyond the 50 mile radius limit
2. Mileage and travel time on portable equipment (*see below*)
3. Labor to replace such items that can be replaced easily during a daily cleaning routine, ie; removable kettles on fryers, knobs, grease drawers on griddles, etc.
4. Installation of equipment
5. Damages due to improper installation
6. Damages from abuse or misuse
7. Operated contrary to the Operating and Installation Instructions
8. Cleaning of equipment
9. Seasoning of griddle plates
10. Voltage conversions
11. Gas conversions
12. Pilot light adjustment
13. Miscellaneous adjustments
14. Thermostat calibration and by-pass adjustment
15. Resetting of circuit breakers or safety controls or reset buttons
16. Replacement of bulbs
17. Replacement of fuses
18. Repair of damage created during transit, delivery, & installation OR created by acts of God

PORTABLE EQUIPMENT

Star will not honor service bills that include travel time and mileage charges for servicing any products considered "Portable" including items listed below. These products should be taken to the Service Agency for repair:

- * The Model 510FD, 510FF Fryer.
- * The Model 526TOA Toaster Oven.
- * The Model J4R, 4 oz. Popcorn Machine.
- * The Model 518CMA & 526CMA Cheese Melter.
- * The Model 12MC & 15MC & 18MCP Hot Food Merchandisers.
- * The Model 12NCPW & 15NCPW Nacho Chip/Popcorn Warmer.
- * All Hot Dog Equipment **except Roller Grills & Drawer Bun Warmers**.
- * All Nacho Cheese Warmers **except Model 11WLA Series Nacho Cheese Warmer**.
- * All Condiment Dispensers **except the Model HPD & SPD Series Dispenser**.
- * All Specialty Food Warmers **except Model 130R, 11RW Series, and 11WSA Series**.
- * All QCS/RCS Series Toasters **except Model QCS3 & RCS3 Series**.
- * All Fast Steamer Models **except Direct Connect Series**.

ALL:

- * Pop-Up Toasters
- * Butter Dispensers
- * Pretzel Merchandisers
(Model 16PD-A Only)
- * Pastry Display Cabinets
- * Nacho Chip Merchandisers
- * Accessories of any kind
- * Sneeze Guards
- * Pizza Ovens
(Model PO12 Only)
- * Heat Lamps
- * Pumps-Manual

The foregoing warranty is in lieu of any and all other warranties expressed or implied and constitutes the entire warranty.

FOR ASSISTANCE

Should you need any assistance regarding the Operation or Maintenance of any Star equipment; write, phone, fax or email our Service Department. In all correspondence mention the Model number and the Serial number of your unit, and the voltage or type of gas you are using.



STAR MANUFACTURING INTERNATIONAL INC.
 #10 SUNNEN DRIVE
 ST. LOUIS, MO. 63143, USA

MATERIAL -----
 FINISH -----

MODEL NO. SDW1/2/3

PART NO. SK1850

TITLE WIRE DIAGRAM

DR. TH CK. DATE 01-23-01

TOLERANCES UNLESS OTHERWISE NOTED
 FRACTIONS ± 1/64 DECIMALS ± .005 ANGLES ± 1°

THIS DRAWING CONTAINS INFORMATION CONFIDENTIAL TO STAR MFG. INT'L. INC.
 NO REPRODUCTION OR DISCLOSURE OF ITS CONTENTS IS PERMITTED.

REVISIONS

LTR DATE

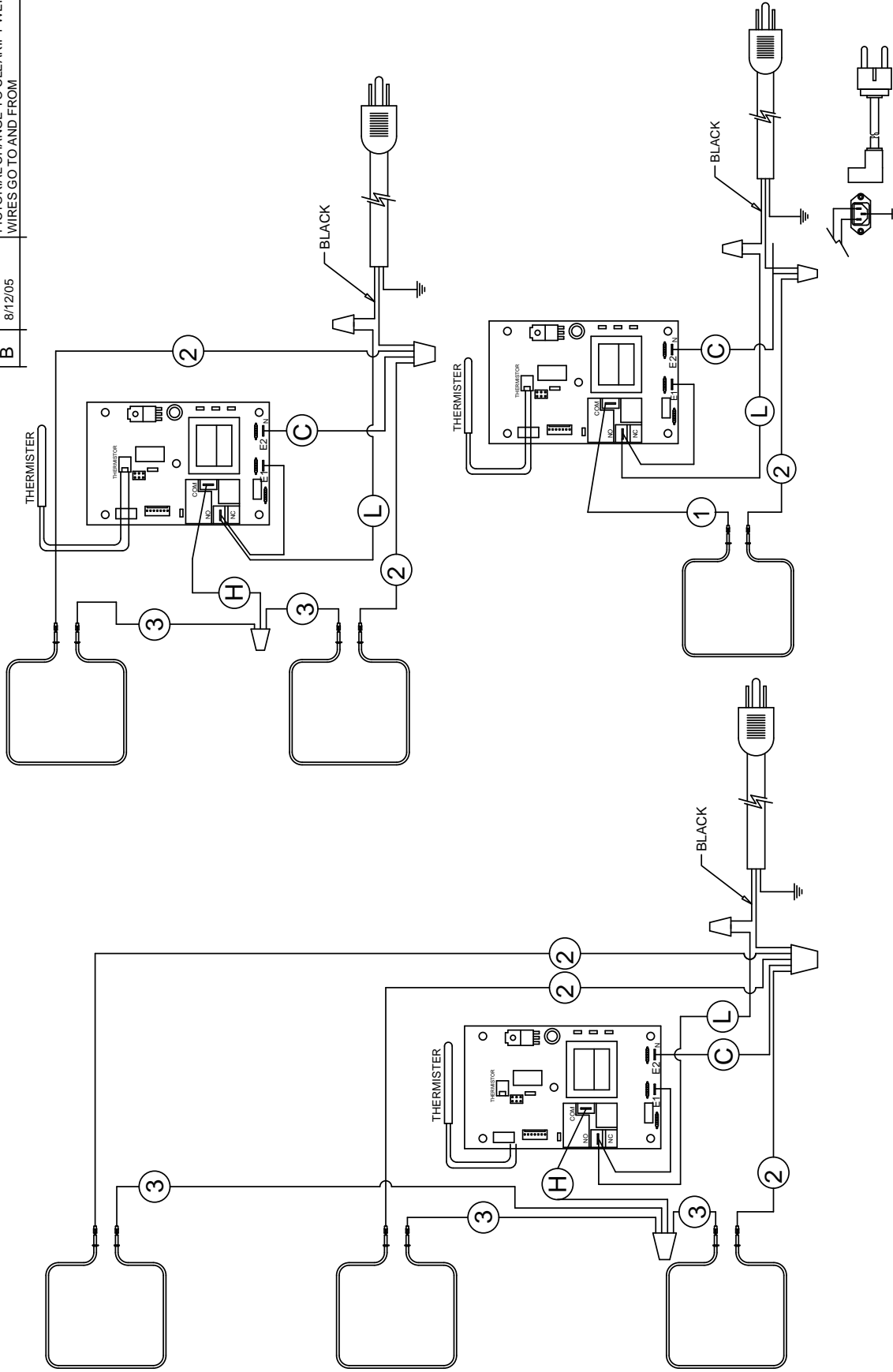
DESCRIPTION OF CHANGE

DR

TH

CG

A	4-17-01	PICTORIAL CHANGE
B	8/12/05	PICTORIAL CHANGE TO CLARIFY WERE WIRES GO TO AND FROM



230 VOLT VERSIONS
 TYPICAL



STAR MANUFACTURING INTERNATIONAL INC.
 #10 SUNNEN DRIVE
 ST. LOUIS, MO. 63143, USA

DR. TH CK. DATE 01-23-01

TOLERANCES UNLESS OTHERWISE NOTED
 FRACTIONS $\pm 1/64$ DECIMALS $\pm .005$ ANGLES $\pm 1^\circ$

THIS DRAWING CONTAINS INFORMATION CONFIDENTIAL TO STAR MFG. INT'L. INC.
 NO REPRODUCTION OR DISCLOSURE OF ITS CONTENTS IS PERMITTED.

MATERIAL -----
 FINISH -----

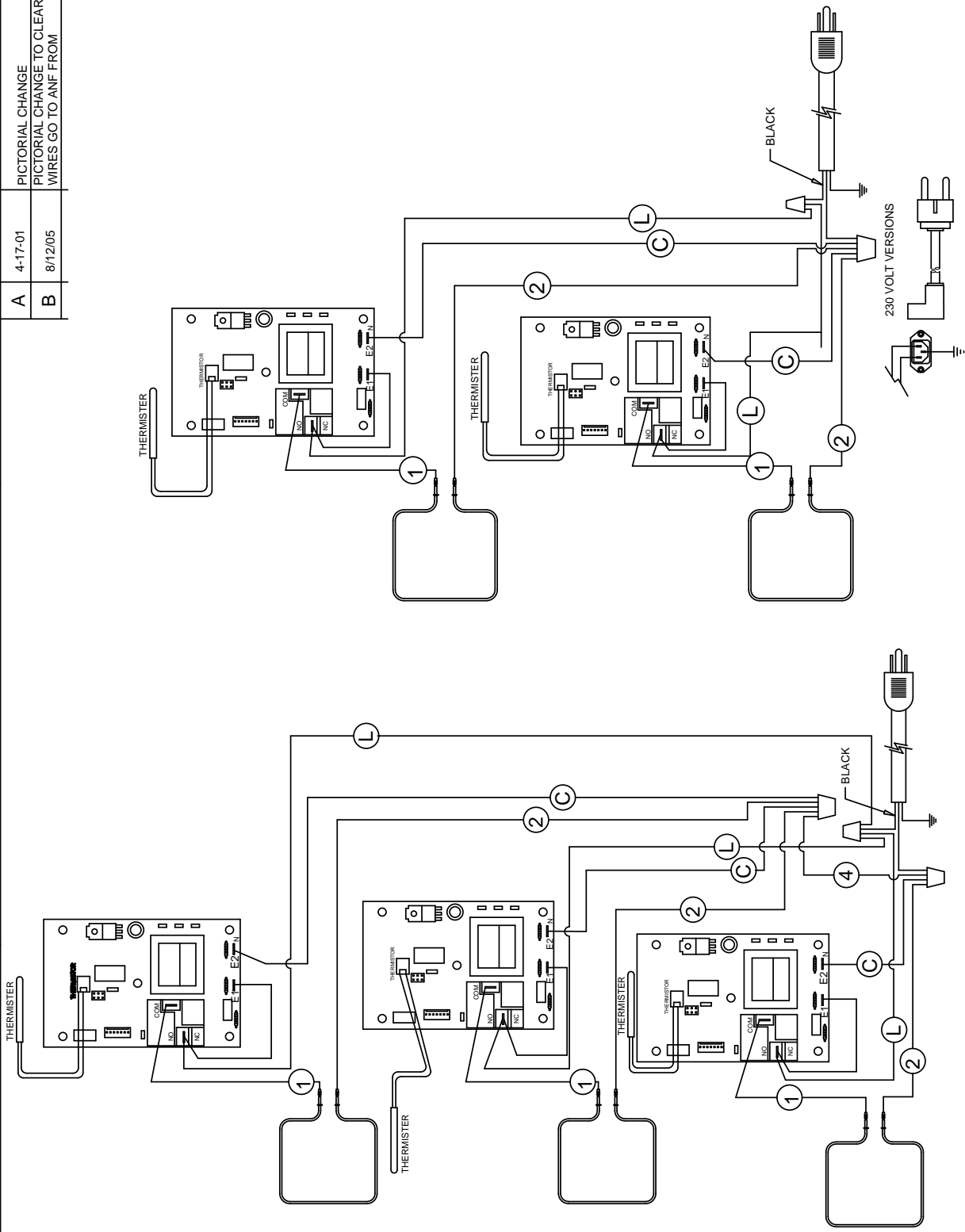
MODEL NO.
SDW2C/3C

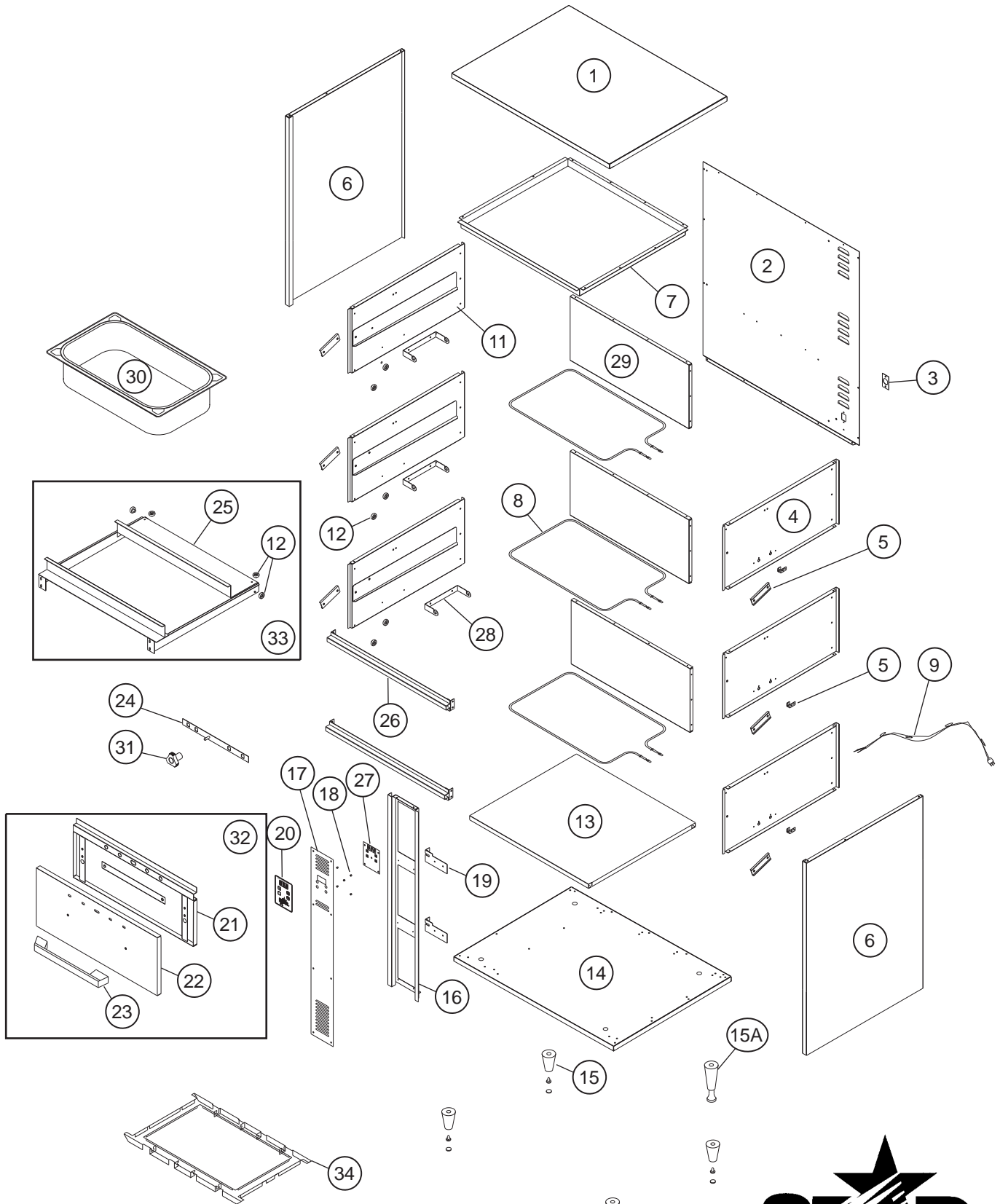
PART NO. **SK1851**

TITLE

WIRE DIAGRAM

REVISIONS	LTR	DATE	DESCRIPTION OF CHANGE	DR
A		4-17-01		TH
B		8/12/05	PICTORIAL CHANGE TO CLARIFY WERE WIRES GO TO AIN FROM	CG





MODEL SDW3 SHOWN
DRAWER WARMER



SOME ITEMS ARE INCLUDED FOR
ILLUSTRATIVE PURPOSES ONLY AND IN
CERTAIN INSTANCES MAY NOT BE AVAILABLE

MODEL - SDW1, SDW2, SDW3

STAR MANUFACTURING INTERNATIONAL, INC.
SK1840 REV. B 12/12/2000

PARTS LIST

September 27, 2011, Rev. C

Model: SDW1, SDW2, SDW3, SDW1W, SDW2W, Drawer Warmer				
Fig No	Part No	Qty	Description	Application
1	E9-Z4031	1	TOP PANEL	
2	E9-Z4030	1	BACK PANEL	SDW1
	E9-Z4089			SDW2
	E9-Z4097			SDW2
3	E9-Z4027	1	ADAPTER PLATE 120V	
	2E-Y9227		INLET 230V	
	2K-Y2967		CORD BUSHING 120V	
4	E9-DW0004	1/2/3	LINER ASSEMBLY RIGHT	SDW1 / SDW2 / SDW3
	E9-DW0040	1/2	LINER ASSEMBLY RIGHT	SDW1W / SDW2W
5	E9-Z3987	2/4/6	BEARING STIFFENER	SDW1 / SDW2 / SDW3
6	E9-Z4032	2	SIDE PANEL	SDW1
	E9-Z4090			SDW2
	E9-Z4098			SDW3
7	E9-Z4022	1	TOP LINER	
8	2N-Z4057	1/2/3	HEATING ELEMENT 120V	SDW1 / SDW2 / SDW3
	2N-Z4154		HEATING ELEMENT 230V	
9	A5-250027	1	LEAD IN CORD	120V
	2E-Z0512			230V
10	E9-Z3986	1/2/3	SENSOR BRACKET	SDW1 / SDW2 / SDW3
11	E9-DW0003	1/2/3	LINER ASSEMBLY LT	SDW1 / SDW2 / SDW3
	E9-DW0039	1/2		SDW1W / SDW2W
12	2P-Z0315	8/16/24	GUIDE BEARING w/ SCREW	SDW1 / SDW2 / SDW3
NI	2C-1810	8/16/24	WASHER	SDW1 / SDW2 / SDW3
NI	2C-Z0498	8/16/24	NUT	SDW1 / SDW2 / SDW3
13	E9-Z4009	1	BOTTOM LINER	
14	E9-DW0002	1	BOTTOM ASSEMBLY	
15	2R-Z5846	4	FOOT	
15A	2R-Y5092	4	4" FOOT	SDW2, SDW3
16	E9-Z4001	1	FRONT PANEL	SDW1
	E9-Z4088			SDW2
	E9-Z4096			SDW3
17	E9-DW0012	1	CONTROL PANEL ASSY	SDW1
	E9-DW0020			SDW2
	E9-DW0022			SDW3
18	2K-Z1971	5	CONTROL BOARD SPACER	
19	E9-Z4078	1/2	GUSSET	SDW2 / SDW3
20	2M-Z4067	1	GRAPHICS PANEL	SDW1
21	E9-DW0011	1/2/3	DRAWER LINER ASSEMBLY	SDW1 / SDW2 / SDW3
22	E9-Z4050	1/2/3	DRAWER FRONT	SDW1 / SDW2 / SDW3
23	2R-Y7557	1/2/3	DRAWER PULL	SDW1 / SDW2 / SDW3
24	E9-DW0009	1/2/3	DAMPER ASSEMBLY	SDW1 / SDW2 / SDW3
25	E9-DW0010	1/2/3	DRAWER ASSEMBLY	SDW1 / SDW2 / SDW3
	E9-DW0043	1/2	DRAWER ASSEMBLY	SDW1W / SDW2W
26	E9-DW0021	1/2	FRONT TRIM ASSEMBLY	SDW2 / SDW3

**IMPORTANT: WHEN ORDERING, SPECIFY VOLTAGE OR TYPE GAS DESIRED
INCLUDE MODEL AND SERIAL NUMBER**

PAGE 1
OF 2

Some items are included for illustrative purposes only and in certain instances may not be available.



Star International Holdings Inc. Company

PARTS LIST

September 27, 2011, Rev. C

Model: SDW1, SDW2, SDW3, SDW1W, SDW2W, Drawer Warmer				
Fig No	Part No	Qty	Description	Application
27	2E-Z4062	1	CONTROL W/ SENSOR	120V
	2E-Z4153			230V
28	E9-Z4016	1/2/3	ELEMENT BRACKET	SDW1 / SDW2 / SDW3
29	E9-Z4026	1/2/3	REAR LINER	SDW1 / SDW2 / SDW3
30	2D-Y6177	1/2/3	FULL SIZE PAN 6"	SDW1 / SDW2 / SDW3
31	2R-Z4054	1/2/3	KNOB	SDW1 / SDW2 / SDW3
32	E9-DW0030	1/2/3	DRAWER FRONT COMPLETE	SDW1 / SDW2 / SDW3
33	E9-DW0031	1/2/3	DRAWER FRAME W/ROLLERS	SDW1 / SDW2 / SDW3
	E9-DW0042	1/2		SDW1W / SDW2W
32/33	E9-DW0029	1/2/3	DRAWER ASSY COMPLETE	SDW1 / SDW2 / SDW3
	E9-DW0041	1/2	DRAWER ASSY COMPLETE	SDW1W / SDW2W
34	E9-Z7719	1/2	ELEMENT COVER	SDW1W / SDW2W
N/A	E9-Z4013	1	INSULATION SIDE	SDW1
N/A	E9-Z4092			SDW2
N/A	E9-Z4100			SDW3
N/A	E9-Z4014	1	INSULATION REAR	SDW1
N/A	E9-Z4093			SDW2
N/A	E9-Z4101			SDW3
N/A	E9-Z4012	2	INSULATION TOP/BOTTOM	
N/A	E9-Z4015	1/2/3	INSULATION DRAWER FRONT	SDW1 / SDW2 / SDW3

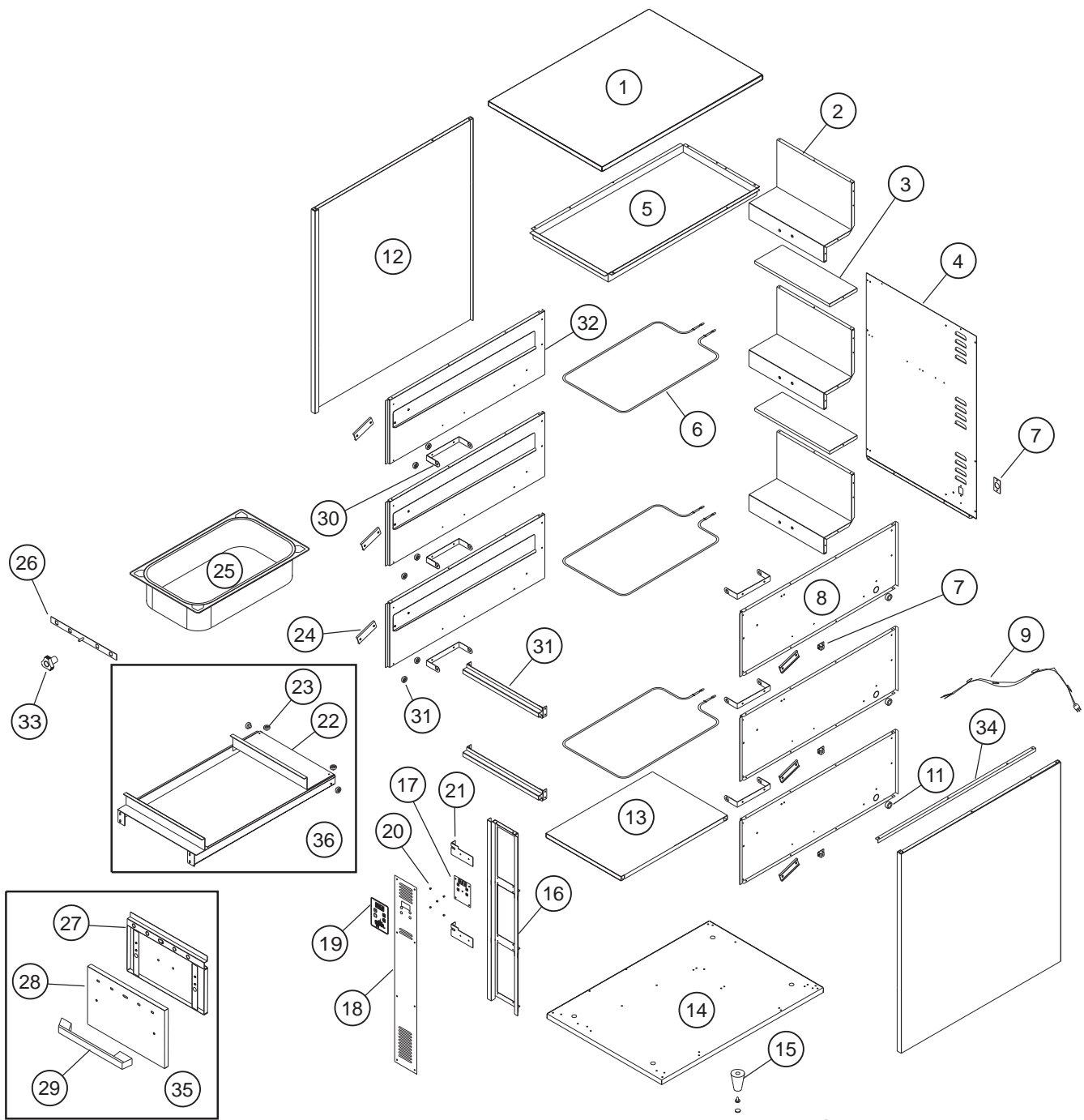
**IMPORTANT: WHEN ORDERING, SPECIFY VOLTAGE OR TYPE GAS DESIRED
INCLUDE MODEL AND SERIAL NUMBER**

PAGE 2
OF 2

Some items are included for illustrative purposes only and in certain instances may not be available.



Star International Holdings Inc. Company



DRAWER WARMER
 MODEL SDW3N SHOWN

SOME ITEMS ARE INCLUDED FOR
 ILLUSTRATIVE PURPOSES ONLY AND IN
 CERTAIN INSTANCES MAY NOT BE AVAILABLE

MODEL - SDW1N, SDW2N, SDW3N



STAR MANUFACTURING INTERNATIONAL, INC.

SK1838

REV. A

4/17/2001

PARTS LIST

September 27, 2011, Rev. C

Model: SDW1N, SDW2N, SDW3N, Drawer Warmer				
Fig No	Part No	Qty	Description	Application
1	E9-Z3999	1	TOP PANEL	
2	E9-Z3996	1/2/3	REAR LINER	SDW1N / SDW2N / SDW3N
3	E9-Z4077	1	REAR LINER COVER	SDW2N, SDW3N
4	E9-Z3998	1	BACK PANEL	SDW1N
	E9-Z4072			SDW2N
	E9-Z4104			SDW3N
5	E9-Z3997	1	TOP LINER	
6	2N-Z4057	1/2/3	HEATING ELEMENT 120V	SDW1N / SDW2N / SDW3N
	2N-Z4154		HEATING ELEMENT 230V	
7	E9-Z4027	1	ADAPTER PLATE 120V	
	2E-Y9227		INLET 230V	
	2K-Y2967		CORD BUSHING 120V	
8	E9-DW0006	1/2/3	LINER ASSEMBLY RIGHT	SDW1N / SDW2N / SDW3N
9	A5-250027	1	LEAD IN CORD	120V
	2E-Z0512			230V
10	E9-Z3986	1/2/3	SENSOR BRACKET	SDW1N / SDW2N / SDW3N
11	2K-8043	1/2/3	BUSHING	SDW1N / SDW2N / SDW3N
12	E9-Z4000	2	SIDE PANEL	SDW1N
	E9-Z4073			SDW2N
	E9-Z4105			SDW3N
13	E9-Z3976	1	BOTTOM LINER	
14	E9-DW0001	1	BOTTOM ASSEMBLY	
15	2R-Z5846	4	FOOT	
15A	2R-Y5092	4	4" FOOT	SDW2N, SDW3N
16	E9-Z4001	1	FRONT PANEL	SDW1N
	E9-Z4088			SDW2N
	E9-Z4096			SDW3N
17	2E-Z4062	1	CONTROL W/ SENSOR	120V
	2E-Z4153			230V
18	E9-DW0012	1	CONTROL PANEL ASSY	SDW1N
	E9-DW0020			SDW2N
	E9-DW0022			SDW3N
19	2M-Z4067	1	GRAPHICS PANEL	SDW1N
20	2K-Z1971	5	CONTROL BOARD SPACER	
21	E9-Z4078	1/2	GUSSET	SDW2N / SDW3N
22	E9-DW0007	1/2/3	DRAWER ASSEMBLY	SDW1N / SDW2N / SDW3N
23	2P-Z0315	8/16/24	GUIDE BEARING	SDW1N / SDW2N / SDW3N
NI	2C-1810	8/16/24	WASHER	SDW1N / SDW2N / SDW3N
NI	2C-Z0498	8/16/24	NUT	SDW1N / SDW2N / SDW3N
24	E9-Z3987	2/4/6	BEARING STIFFENER	SDW1N / SDW2N / SDW3N
25	2D-Y6177	1/2/3	FULL SIZE PAN 6"	SDW1N / SDW2N / SDW3N
26	E9-DW0009	1/2/3	DAMPER ASSEMBLY	SDW1N / SDW2N / SDW3N
27	E9-DW0008	1/2/3	DRAWER LINER ASSEMBLY	SDW1N / SDW2N / SDW3N
28	E9-Z4049	1/2/3	DRAWER FRONT	SDW1N / SDW2N / SDW3N

**IMPORTANT: WHEN ORDERING, SPECIFY VOLTAGE OR TYPE GAS DESIRED
INCLUDE MODEL AND SERIAL NUMBER**

PAGE 1
OF 2

Some items are included for illustrative purposes only and in certain instances may not be available.



Star International Holdings Inc. Company

PARTS LIST

September 27, 2011, Rev. C

Model: SDW1N, SDW2N, SDW3N, Drawer Warmer				
Fig No	Part No	Qty	Description	Application
29	2R-Y7557	1/2/3	DRAWER PULL	SDW1N / SDW2N / SDW3N
30	E9-Z3985	2/4/6	ELEMENT BRACKET	SDW1N / SDW2N / SDW3N
31	E9-DW0019	1/2	FRONT TRIM ASSEMBLY	SDW2N / SDW3N
32	E9-DW0005	1/2/3	LINER ASSEMBLY LT	SDW1N / SDW2N / SDW3N
33	2R-Z4054	1/2/3	KNOB	SDW1N / SDW2N / SDW3N
34	E9-Z4260	1	SIDE STIFFENER	
35	E9-DW0033	1/2/3	DRAWER FRONT COMPLETE	SDW1N / SDW2N / SDW3N
36	E9-DW0034	1/2/3	DRAWER FRAME W/ROLLERS	SDW1N / SDW2N / SDW3N
35/36	E9-DW0032	1/2/3	DRAWER ASSY COMPLETE	SDW1N / SDW2N / SDW3N
N/A	E9-Z3978	1	INSULATION SIDE	SDW1N
N/A	E9-Z4079			SDW2N
N/A	E9-Z4107			SDW3N
N/A	E9-Z3979	1	INSULATION REAR	SDW1N
N/A	E9-Z4080			SDW2N
N/A	E9-Z4108			SDW3N
N/A	E9-Z3981	1	INSULATION TOP	
N/A	E9-Z3977	1	INSULATION BOTTOM	
N/A	E9-Z3980	1/2/3	INSULATION DRAWER FRONT	SDW1N / SDW2N / SDW3N

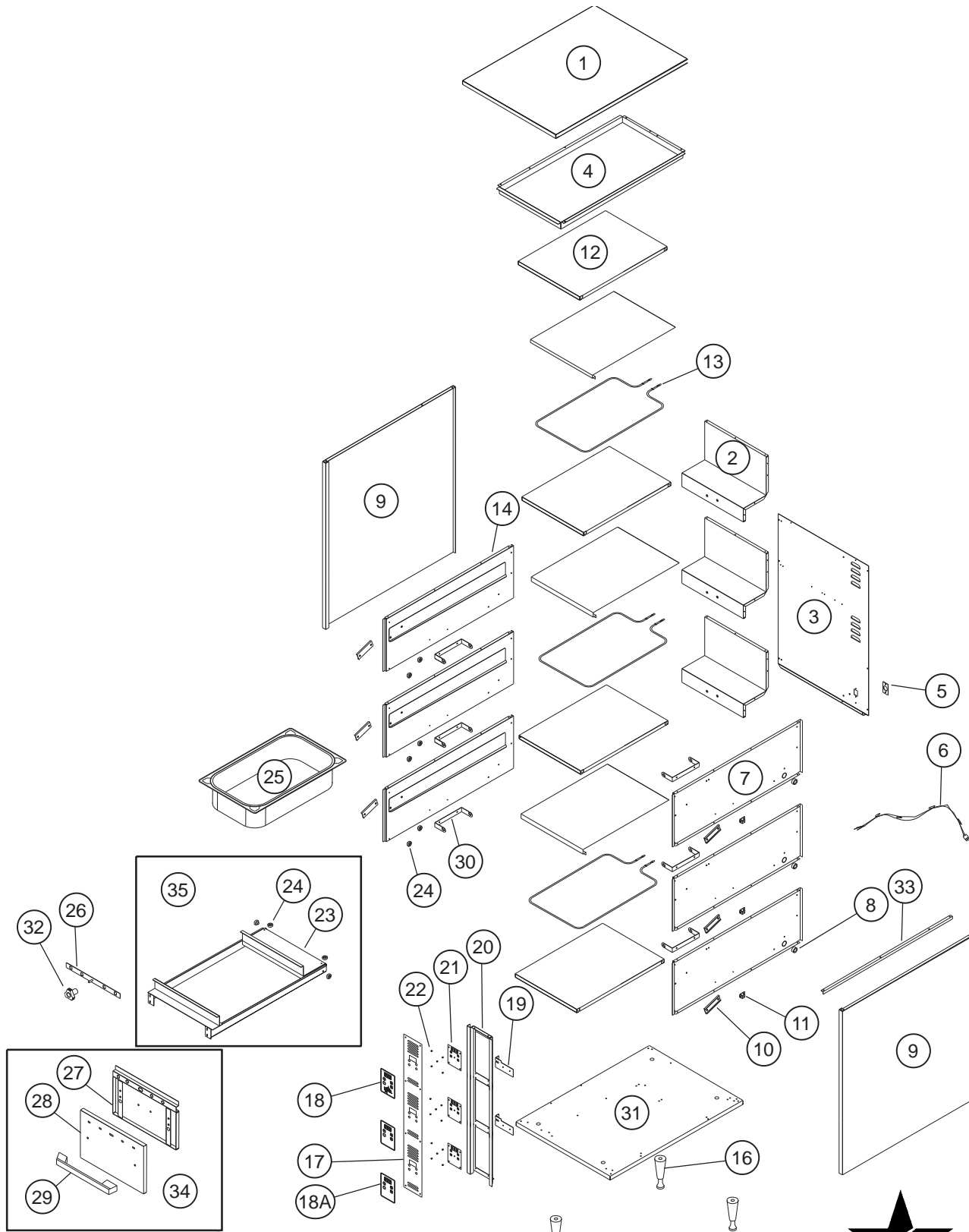
**IMPORTANT: WHEN ORDERING, SPECIFY VOLTAGE OR TYPE GAS DESIRED
INCLUDE MODEL AND SERIAL NUMBER**

PAGE 2
OF 2

Some items are included for illustrative purposes only and in certain instances may not be available.



Star International Holdings Inc. Company



MODEL SDW3NC SHOWN
DRAWER WARMER

SOME ITEMS ARE INCLUDED FOR
ILLUSTRATIVE PURPOSES ONLY AND IN
CERTAIN INSTANCES MAY NOT BE AVAILABLE

MODEL - SDW2NC, SDW3NC



STAR MANUFACTURING INTERNATIONAL, INC.

SK1839

REV. A

4/17/01

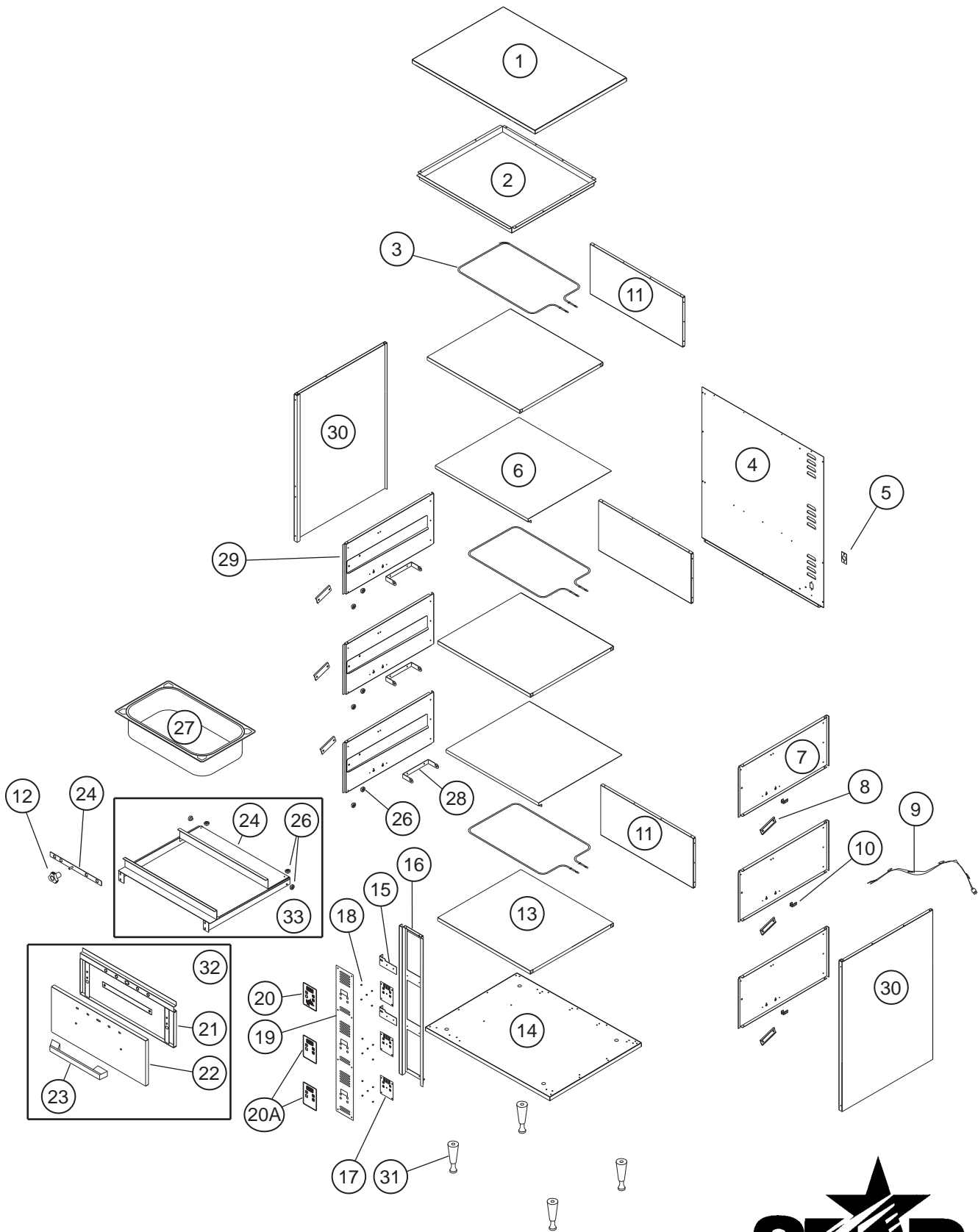
PARTS LIST

September 27, 2011, Rev. C

Model: SDW2NC, SDW3NC Drawer Warmer				
Fig No	Part No	Qty	Description	Application
1	E9-Z3999	1	TOP PANEL	
2	E9-Z3996	2/3	REAR LINER	SDW2NC / SDW3NC
3	E9-Z4072	1	BACK PANEL	SDW2NC
	E9-Z4104			SDW3NC
4	E9-Z3997	1	TOP LINER	
5	E9-Z4027	1	ADAPTER PLATE 120V	
	2K-Y2967		CORD BUSHING 120V	
	2E-Y9227		INLET 230V	
6	A5-250027	1	LEAD IN CORD	120V
	2E-Z0512			230V
7	E9-DW0006	2/3	LINER ASSEMBLY RIGHT	SDW2NC / SDW3NC
8	2K-8043	2/3	BUSHING	SDW2NC / SDW3NC
9	E9-Z4073	2	SIDE PANEL	SDW2NC
	E9-Z4105			SDW3NC
10	E9-Z3987	4/6	BEARING STIFFENER	SDW2NC / SDW3NC
11	E9-Z3986	2/3	SENSOR BRACKET	SDW2NC / SDW3NC
12	E9-Z3976	2/3	BOTTOM LINER	SDW2NC / SDW3NC
13	2N-Z4057	2/3	HEATING ELEMENT 120V	SDW2NC / SDW3NC
	2N-Z4154		HEATING ELEMENT 230V	SDW2NC / SDW3NC
14	E9-DW0005	2/3	LINER ASSEMBLY LT	SDW2NC / SDW3NC
15	E9-Z4114	1/2	DIVIDER PANEL NARROW	SDW2NC / SDW3NC
16	2R-Y5092	4	4" FOOT	
17	EP-DW0023	1	CONTROL PANEL ASSY	SDW2NC
	E9-DW0024			SDW3NC
18	2M-Z4247	1/2	GRAPHICS PANEL	SDW2NC / SDW3NC
19	E9-Z4078	1/2	GUSSET	SDW2NC / SDW3NC
20	E9-Z4088	1	FRONT PANEL	SDW2NC
	E9-Z4096			SDW3NC
21	2E-Z4062	2/3	CONTROL W/ SENSOR 120V	SDW2NC / SDW3NC
	2E-Z4153		CONTROL W/ SENSOR 230V	SDW2NC / SDW3NC
22	2K-Z1971	10/15	CONTROL BOARD SPACER	SDW2NC / SDW3NC
23	E9-DW0007	2/3	DRAWER ASSEMBLY	SDW2NC / SDW3NC
24	2P-Z0315	16/24	GUIDE BEARING	SDW2NC / SDW3NC
	2C-1810	16/24	WASHER	
	2C-Z0498	16/24	NUT	
25	2D-Y6177	2/3	FULL SIZE PAN 6"	SDW2NC / SDW3NC
26	E9-DW0009	2/3	DAMPER ASSEMBLY	SDW2NC / SDW3NC
27	E9-DW0008	2/3	DRAWER LINER ASSEMBLY	SDW2NC / SDW3NC
28	E9-Z4049	2/3	DRAWER FRONT	SDW2NC / SDW3NC
29	2R-Y7557	2/3	DRAWER PULL	SDW2NC / SDW3NC
30	E9-Z3985	4/6	ELEMENT BRACKET	SDW2NC / SDW3NC
31	E9-DW0001	1	BOTTOM ASSEMBLY	
32	2R-Z4054	2/3	KNOB	SDW2NC / SDW3NC
33	E9-Z4260	1	SIDE STIFFENER	
34	E9-DW0033	2/3	DRAWER FRONT ASSY COMPLETE	SDW2NC / SDW3NC
35	E9-DW0034	2/3	DRAWER FRAME W/ROLLERS	SDW2NC / SDW3NC
34/35	E9-DW0032	2/3	DRAWER ASSY COMPLETE	SDW2NC / SDW3NC
N/A	E9-Z4079	1	INSULATION SIDE	SDW2NC
N/A	E9-Z4107			SDW3NC
N/A	E9-Z4080	1	INSULATION REAR	SDW2NC
N/A	E9-Z4108			SDW3NC
N/A	E9-Z3981	1	INSULATION TOP	
N/A	E9-Z3977	2/3	INSULATION BOTTOM	SDW2NC / SDW3NC
N/A	E9-Z3980	2/3	INSULATION DRAWER FRONT	SDW2NC / SDW3NC



Star International Holdings Inc. Company



MODEL SDW3C SHOWN
DRAWER WARMER



SOME ITEMS ARE INCLUDED FOR
ILLUSTRATIVE PURPOSES ONLY AND IN
CERTAIN INSTANCES MAY NOT BE AVAILABLE

MODEL - SDW2C, SDW3C

STAR MANUFACTURING INTERNATIONAL, INC.

SK1841

REV. A

4/17/01

PARTS LIST

September 27, 2011, Rev. C

Model: SDW2C, SDW3C Drawer Warmer				
Fig No	Part No	Qty	Description	Application
1	E9-Z4031	1	TOP PANEL	
2	E9-Z4022	1	TOP LINER	
3	2N-Z4057	2/3	HEATING ELEMENT	120V
	2N-Z4154			230V
4	E9-Z4089	1	BACK PANEL	SDW2C
	E9-Z4097			SDW3C
5	E9-Z4027	1	ADAPTER PLATE	120V
	2K-Y2967		CORD BUSHING	
	2E-Y9227		INLET	
6	E9-Z4113	1/2	DIVIDER PANEL	SDW2C / SDW3C
7	E9-DW0004	2/3	LINER ASSEMBLY RIGHT	SDW2C / SDW3C
8	E9-Z3987	4/6	BEARING STIFFENER	SDW2C / SDW3C
9	A5-250027	1	LEAD IN CORD	120V
	2E-Z0512			230V
10	E9-Z3986	2/3	SENSOR BRACKET	SDW2C / SDW3C
11	E9-Z4026	2/3	REAR LINER	SDW2C / SDW3C
12	2R-Z4054	2/3	KNOB	SDW2C / SDW3C
13	E9-Z4009	2/3	BOTTOM LINER	SDW2C / SDW3C
14	E9-DW0002	1	BOTTOM ASSEMBLY	
15	E9-Z4078	1/2	GUSSET	SDW2C / SDW3C
16	EP-DW0023	1	CONTROL PANEL ASSY	SDW2C
	E9-DW0024			SDW3C
17	2E-Z4062	2/3	CONTROL W/ SENSOR	120V
	2E-Z4153			230V
18	2K-Z1971	10/15	CONTROL BOARD SPACER	SDW2C / SDW3C
19	E9-Z4088	1	FRONT PANEL	SDW2C
	E9-Z4096			SDW3C
20	2M-Z4247	1/2	GRAPHICS PANEL	SDW2C / SDW3C
21	E9-DW0011	2/3	DRAWER LINER ASSEMBLY	SDW2C / SDW3C
22	E9-Z4050	2/3	DRAWER FRONT	SDW2C / SDW3C
23	2R-Y7557	2/3	DRAWER PULL	SDW2C / SDW3C
24	E9-DW0009	2/3	DAMPER ASSEMBLY	SDW2C / SDW3C
25	E9-DW0010	2/3	DRAWER ASSEMBLY	SDW2C / SDW3C
26	2P-Z0315	16/24	GUIDE BEARING	SDW2C / SDW3C
NI	2C-1810		WASHER	
NI	2C-Z0498		NUT	
27	2D-Y6177	2/3	FULL SIZE PAN 6"	SDW2C / SDW3C
28	E9-Z4016	2/3	ELEMENT BRACKET	SDW2C / SDW3C
29	E9-DW0003	2/3	LINER ASSEMBLY LT	SDW2C / SDW3C
30	E9-Z4090	2	SIDE PANEL	SDW2C
	E9-Z4098			SDW3C
31	2R-Y5092	4	4" FOOT	
32	E9-DW0030	2/3	DRAWER FRONT COMPLETE	SDW2C / SDW3C
33	E9-DW0031	2/3	DRAWER FRAME W/ROLLERS	SDW2C / SDW3C
32/33	E9-DW0029	2/3	DRAWER ASSEMBLY COMPLETE	SDW2C / SDW3C
N/A	E9-Z4092	1	INSULATION SIDE	SDW2C
N/A	E9-Z4100	1	INSULATION SIDE	SDW3C
N/A	E9-Z4093	1	INSULATION REAR	SDW2C
N/A	E9-Z4101	1	INSULATION REAR	SDW3C
N/A	E9-Z4012	3/4	INSULATION TOP/BOTTOM	SDW2C / SDW3C
N/A	E9-Z4015	2/3	INSULATION DRAWER FRONT	SDW2C / SDW3C



Star International Holdings Inc. Company

STAR INTERNATIONAL HOLDINGS INC. COMPANY
Star - Holman - Lang - Wells - Bloomfield - Toastmaster
10 Sunnen Drive, St. Louis, MO 63143 U.S.A.
(314) 678-6303
www.star-mfg.com