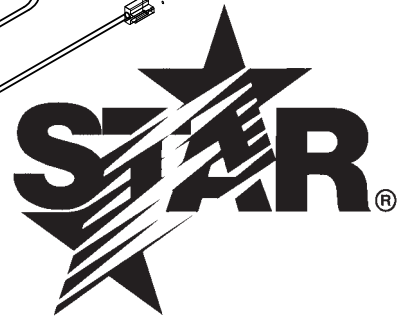
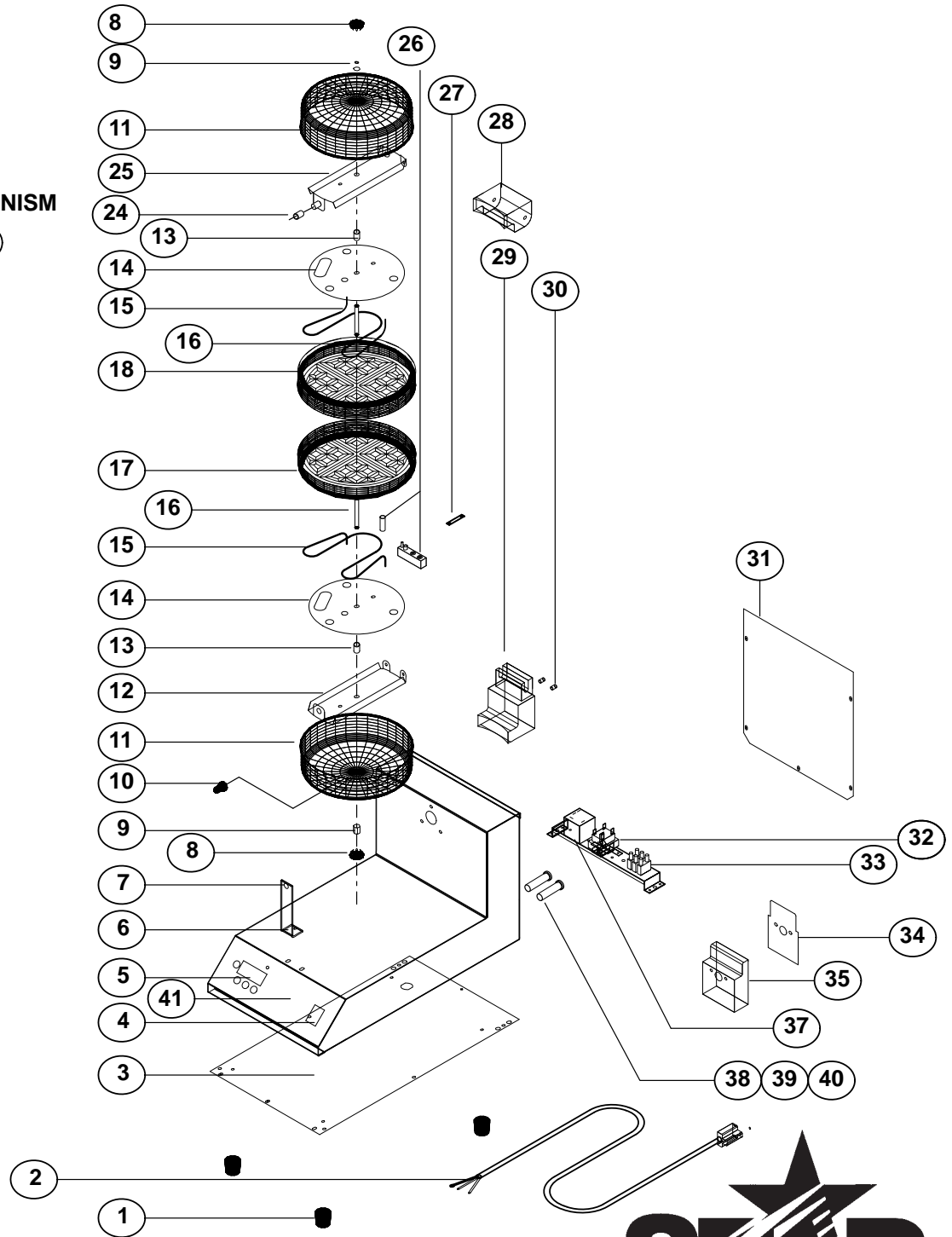
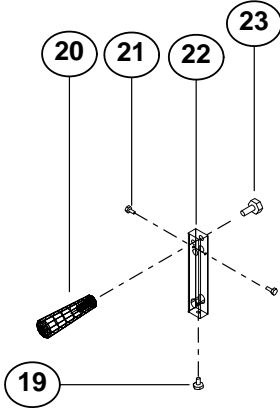


LOCKING MECHANISM



MODEL: SWCB

STAR MANUFACTURING INTERNATIONAL, INC.

SK1604

REV. A

5-20-99

PARTS LIST

November 26, 2008, Rev K

MODEL SWCB Waffle Bakers

Key Number	Part Number	Number Per Unit	Description
1	2I-Z0057	4	FOOT RUBBER
2	B9-73006	1	LEAD IN CORD 120V 15A
	B9-73028	1	LEAD IN CORD 240V
	B9-73029	1	LEAD IN CORD 230V CE
3	B9-Z1723	1	COVER-BOTTOM
4	2E-Z1858	1	SWITCH 20A/120V MOLVENO
5	2J-Z1836	1	TIMER CONTROL
6	B9-73004	1	BODY ASSEMBLY
7	B9-Z1810	1	FRONT SUPPORT
8	2P-Z1735	2	PLUG CAP 3/4
9	2C-Z1734	2	COUPLING 1/4-20
10	2A-09-WB-0094	1	LOCK BULLET
11	B9-Z1790	2	CUP
12	B9-Z1800	1	CUP SUPPORT
13	2A-Z2644	2	SPACER 3/8X0.035
14	B9-Z2013	2	PLATE
15	2N-Z2010	2	ELEMENT 660W 120V
	2N-Z2011	2	ELEMENT 660W 240V
16	2C-Z1674	2	STUD 1/4-20 X 2 1/4
17	B9-Z1775	1	GRID 8" CONE BOTTOM
18	B9-Z1774	1	GRID 8" CONEBAKER, TOP
19	2C-08-07-0112	2	SET SCREW 1/4-20 X 1/4
20	2R-09-WB-0027	1	HANDLE BLACK 3/8-16
21	2C-08-07-0230	2	SCREW 8-32 X 3/8 ACHD
22	2R-Z5658	1	LOCKING ARM 5.25"
23	2C-08-07-0088	1	SCREW 3/8-16X1 1/4 SHCS
24	2A-Z2608	1	SPACER
25	B9-85017	1	CUP SUPPORT ASSEMBLY CONE
26	2T-Z2043	1	THERMOSTAT
27	B9-Z1998	1	HOLDER THERMOSTAT
28	B9-73010	1	TOP HINGE ASSEMBLY
29	B9-Z1764	1	LOWER HINGE MACHINED
30	2A-Z2643	2	SPACER 1/4X0.028
31	B9-Z1724	1	COVER-BACK
32	2E-05-07-0351	1	TRANSFORMER 115/10V 6VA 120V
	2E-05-07-0350	1	TRANSFORMER 230V/10V 6VA 240V
	2E-Z2974	1	TRANSFORMER 230V/10V 230V CE
33	2E-Y9050	1	TERMINAL BLOCK
34	B9-Z1859	1	PLATE-COVER-HINGE
35	B9-Z1835	1	SPACER
36	B9-Z1760	1	DRIP TRAY (not shown)
37	2E-Z2890	1	RELAY 25A 230V CE
	2E-05-07-0352	1	RELAY 30A
38	2E-Z2145	2	FUSEHOLDER 230V CE
39	2E-Z2146	2	FUSE CARRIER 230V CE
40	2E-Z2147	2	FUSE 8A 250V 230V CE
41	2M-Z2108	1	SIGN

SWCB

**IMPORTANT: WHEN ORDERING, SPECIFY VOLTAGE OR TYPE GAS DESIRED
INCLUDE MODEL AND SERIAL NUMBER**

PAGE 1
OF 1

Some items are included for illustrative purposes only and in certain instances may not be available.



Star Manufacturing International, Inc.