

Toastmaster®

Toastmaster®

Toastmaster®

Toastmaster®

Toastmaster®

Toastmaster®

Toastmaster®

Toastmaster®

Toastmaster®

Toastmaster®

Toastmaster®

Toastmaster®

Toastmaster®

Toastmaster®

Toastmaster®

Toastmaster®

Toastmaster®

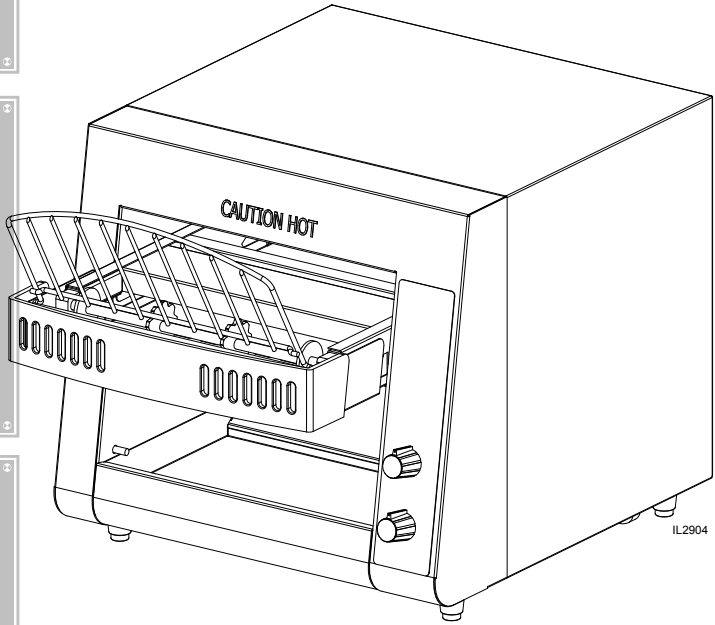


CONVEYOR TOASTER

MODEL
TCT1, TCT2, TCT3

Installation and Operation Instructions

2M-Z19588 Rev. - 12/16/2014



TCT1-120V

SAFETY SYMBOLS



These symbols are intended to alert the user to the presence of important operating and maintenance instructions in the manual accompanying the appliance.



RETAIN THIS MANUAL FOR FUTURE REFERENCE NOTICE

Using any part other than genuine Toastmaster factory supplied parts relieves the manufacturer of all liability.

Toastmaster reserves the right to change specifications and product design without notice. Such revisions do not entitle the buyer to corresponding changes, improvements, additions or replacements for previously purchased equipment.

Due to periodic changes in designs, methods, procedures, policies and regulations, the specifications contained in this sheet are subject to change without notice. While Toastmaster exercises good faith efforts to provide information that is accurate, we are not responsible for errors or omissions in information provided or conclusions reached as a result of using the specifications. By using the information provided, the user assumes all risks in connection with such use.

MAINTENANCE AND REPAIRS

Contact your local authorized service agent for service or required maintenance.

Please record the model number, serial number, voltage and purchase date in the area below and have it ready when you call to ensure a faster service.

Model No. _____

Serial No. _____

Voltage _____

Purchase Date _____

Authorized Service Agent Listing

Reference the listing provided with the unit

OR

for an updated listing go to:

Website: www.toastmastercorp.com
E-mail Service@star-mfg.com
Telephone: (314) 678-6347

The Service Help Desk

Business Hours: 8:00 am to 4:30 p.m. Central Standard Time

Telephone: (314) 678-6347

Fax: (314) 781-2714

E-mail Parts@star-mfg.com
Service@star-mfg.com
Warranty@star-mfg.com

Website: www.star-mfg.com

Mailing Address: Toastmaster
10 Sunnen Drive
St. Louis, MO 63143
U.S.A

GENERAL INSTALLATION DATA

This equipment is designed and sold for commercial use only by personnel trained and experienced in its operation and is not sold for consumer use in and around the home nor for use directly by the general public in food service locations.



Before using your new equipment, read and understand all the instructions & labels associated with the unit prior to putting it into operation. Make sure all people associated with its use understand the units operation & safety before they use the unit.

All shipping containers should be checked for freight damage both visible and concealed. This unit has been tested and carefully packaged to insure delivery of your unit in perfect condition. If equipment is received in damaged condition, either apparent or concealed, a claim must be made with the delivering carrier.

Concealed damage or loss - if damage or loss is not apparent until after equipment is unpacked, a request for inspection of concealed damage must be made with carrier within 15 days. Be certain to retain all contents plus external and internal packaging materials for inspection. The carrier will make an inspection and will supply necessary claim forms.

INSPECTION & ASSEMBLY

UNCRATING AND INSPECTING

Unpack the unit and components from the shipping container. Remove all visible packing material and those from inside the cooking chamber. If damage is discovered, file a claim immediately with the carrier that handled the shipment. Do not operate the unit if it was damaged during shipping.

ASSEMBLY AND INSTALLATION

The unit was shipped fully assembled and ready to plug into a standard outlet specified for its voltage and amp draw. If improper electrical supply is determined, contact a qualified electrician prior to using the unit. Plugging your toaster into the wrong voltage can result in damage to the unit and is NOT covered under warranty. Removal and replacement of the power cord and plug will void the warranty. For assistance, contact your local authorized service agent for service or required maintenance.

Level unit using the adjustable feet under the unit (approximately 1/2" adjustment).

Before using the unit for the first time, wipe down the exterior with a damp cloth.

Allow enough space around the toaster for adequate ventilation. Do not operate the unit without the crumb tray properly positioned. Overheating and poor toasting may occur. Read all labels on the unit and follow their instructions.

ELECTRICAL CONNECTION

Before making any electrical connection to this unit, check that the power supply is adequate for the voltage, amperage and requirements stated on the rating plate.

A wiring diagram is included herewith.

Disconnect the unit from the power source before installing or removing any parts.

Be absolutely sure that the ground connection for the receptacle is properly wired. Do not connect equipment to power without proper ground connections. Improper grounding may result in personal injury or fatality.



DO NOT CUT OR REMOVE THIS PLUG OR GROUNDING PRONG FROM THE PLUG.

CONNECT/PLUG UNIT INTO DEDICATED A.C. LINE ONLY SPECIFIED ON THE DATA PLATE OF THE UNIT.

DAILY OPERATION

ROTARY POWER SAVER SWITCH

For toasters equipped with a Rotary Power Saver Switch, turn clockwise or counterclockwise to get in the following positions.

FULL POWER

When in this position your equipment is at full power and ready to use.

OFF ROTARY

Two off positions are provided, a single rotation to either direction will shut the unit off.

STANDBY

The standby position reduces the power consumption by 75%. Using this position during the quiet times will save electricity, and keep the toaster warm. When needed, turn the switch to FULL POWER. Recovery time is about 30 seconds.



CERTAIN SURFACES ARE EXTREMELY HOT DURING OPERATION AND CARE SHOULD BE TAKEN WHILE USING THIS UNIT.

COOKING PROCEDURES

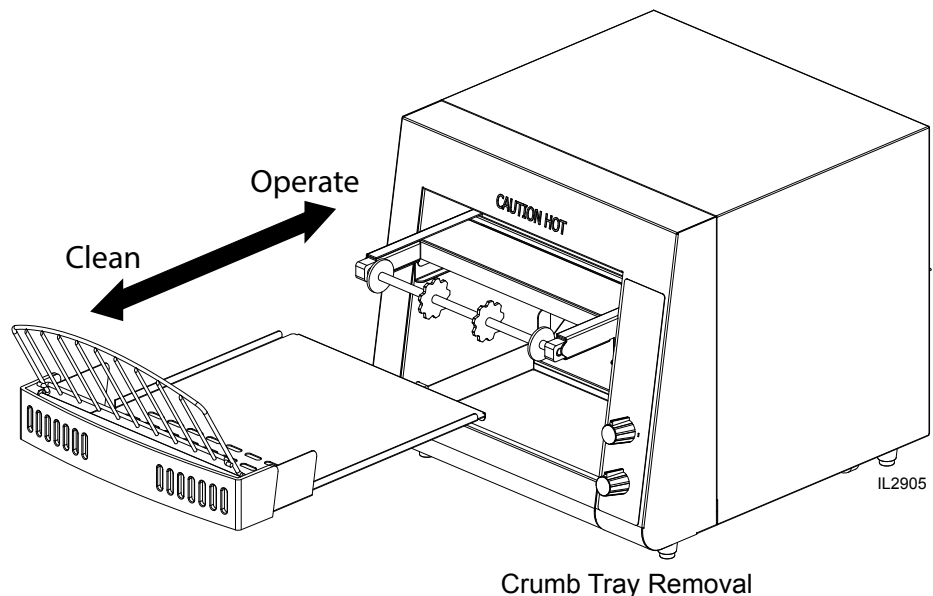
BREAD TOASTING

Some toasters are equipped with a swinging heat shutter at the toaster entrance. This shutter will move out of the way as the product passes under it.

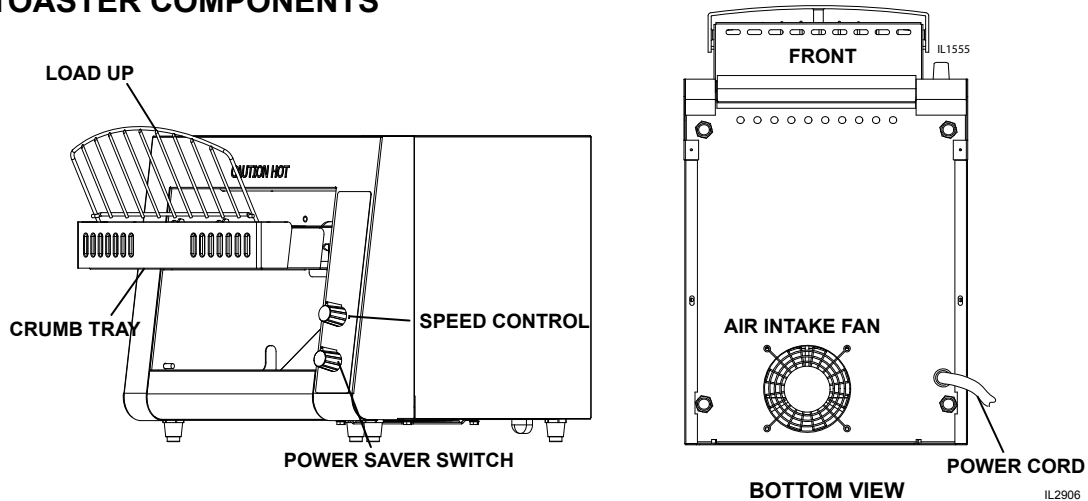
- 1) Turn the power saver to FULL POWER.
- 2) Set the conveyor speed to 50%.
- 4) Allow warm up time of 5 to 10 minutes.
- 5) Place a sample product on the conveyor belt to test the settings.

- If toasting is too light, turn conveyor speed control counterclockwise to a slower speed.
- If toasting is too dark, turn conveyor speed control clockwise to a faster speed.

(NOTE: Some products may require adjustment of the speed control in order to achieve the desired results.)



TOASTER COMPONENTS



DAILY OPERATION

Check the power cord to insure that it is plugged into a proper outlet.

Set the Rotary Power Saver Switch & speed control knob to desired settings.

Always allow 10 minutes of preheat time before loading the unit with product. Failure to allow sufficient preheat time will result in unsatisfactory cooking until the unit reaches operating temperature.



OPERATING HINTS AND SAFETY

Disconnect power to the unit with the switch at the end of each day of operation.

Do not leave the unit in operation without an attendant.

Turn Power Saver Switch to Standby during idle periods. It will take only a few minutes to regain operating temperature.

Do not leave the unit at high temperature when not in use or during idle periods. This will cause food particles and grease film to carbonize.

CLEANING

Preventive maintenance for your Toastmaster toaster consists of the following recommended cleaning procedures. To keep your toaster in its top operating condition, these steps should be performed on a daily or weekly as indicated.

- A. Turn main power saver switch to the OFF position. Disconnect unit from power source.
- B. After the unit cools, remove interior crumb tray (as shown on page 4) and clean. Slide crumb tray back into position.
- C. Wipe exterior surface of unit.
- D. Areas inside the toaster, be sure to unplug the unit and allow to cool prior to wiping clean with a damp cloth.
- E. Clean air intake on bottom of unit.
- F. For lightly soiled conveyor belts, turn conveyor speed control to fastest setting and wipe with a damp cloth (daily) For heavily soiled conveyors, turn conveyor speed control to fastest setting, with crumb tray installed and wipe with a light abrasive pad (as needed).



DO NOT IMMERSE OR LET THE UNIT STAND IN WATER.

DO NOT HOSE DOWN THE UNIT OR THE TABLE/COUNTER IF THE UNIT IS ON THE TABLE/COUNTER.

KEEP AWAY FROM RUNNING WATER.

MAINTENANCE PROCEDURES

A. REPLACING HEATER TUBES

- 1) **DISCONNECT UNIT FROM POWER SOURCE.**
- 2) Remove the enclosure, by removing the screws on both the back and bottom of the unit and lifting the enclosure's back up first and pulling away from the unit.
- 3) Remove heater tube wires from terminal block connection, keeping top and bottom wires separate.
- 4) Lift heater tube retainers by loosening retaining screws and sliding the retainer plate. Hand tighten the plate to hold it up so the heater tubes will slide out freely.
- 5) Gently, pull defective heater tube out of unit.
- 6) Gently, put new heater tube into unit.
- 7) Loosen retainer screws and slide the retainer back into place. Tighten the screw to secure the retainer in place over the ends of the heater tubes.
- 8) Install the heater tube wires to the terminal block, and reinstall the enclosure.
- 9) Connect unit to power source and test by toasting some bread after unit has properly reached operating temperature.

B. REPLACING FAN MOTOR

- 1) **DISCONNECT UNIT FROM POWER SOURCE.**
- 2) Remove the enclosure, by removing the screws on both the back and bottom of the unit and lifting the enclosure's back up first and pulling away from the unit.
- 3) Remove the enclosure and the back panel.
- 4) Unplug power supply cord from fan motor.
- 5) Remove (4) screws, which hold fan motor and grill to bottom of unit and remove fan.
- 6) Put replacement motor and grill in place and secure to the bottom of unit with screws.
- 7) Reconnect power supply cord to fan motor.
- 8) Replace back panel and enclosure. Fasten with screws removed in step 2.

C. REPLACING BELT DRIVE MOTOR

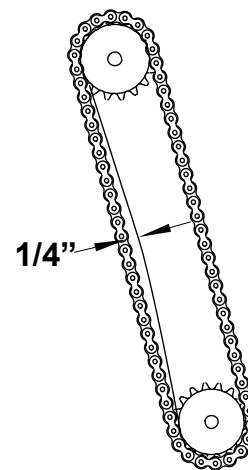
- 1) **DISCONNECT UNIT FROM POWER SOURCE.**
- 2) Remove the enclosure, by removing the screws on both the back and bottom of the unit and lifting the enclosure's back up first and pulling away from the unit.
- 3) Remove sprocket from motor shaft, using an Allen wrench and loosening the set-screw.
- 4) Remove the wire from terminal block connecting the drive motor to internal wiring.
On units rated 208 or 240 volts, note which color leads are being used for these connections and which lead is capped with white tape. The new motor should use the same arrangement.
- 5) Remove screws holding motor in place and remove motor from unit.
- 6) Put new motor in place and attach loosely with mounting screws.
- 7) Replace sprocket on motor shaft.

NOTE: The two sprockets should line up FLUSH with each other, so the chain does not twist any during operation. Also the hub gets installed closets to the motor.

- 8) Slide motor until the drive chain has about 1/4" slack when lightly pushed at the center of its top open run.
See chain tensioning illustration.
- 9) Tighten screws to secure motor.
- 10) Rewire leads same as removed in step 4.
- 11) Replace side panel and control box cover.

D. CLEANING AIR INTAKE ONCE A WEEK.

- 1) **DISCONNECT UNIT FROM POWER SOURCE.**
- 2) Place unit on its backside.
- 3) Use a vacuum cleaner and or a damp cloth to clean the air intake. This procedure should be done at least once a week.



Chain Tension

MAINTENANCE PROCEDURES continued

E. LUBRICATE THE CHAIN & SPROCKETS EVERY 6 MONTHS

- 1) **DISCONNECT UNIT FROM POWER SOURCE.**
- 2) Remove enclosure exposing chain drive.
- 3) Using an extreme pressure, synthetic chain lubricant with a temperature range up to 400°F (204°C). Apply liberally onto chain and sprockets. This grease is available as **part no. 1L-Z12397**.
- 4) Replace enclosure, Reconnect power source and test unit.

TROUBLESHOOTING GUIDE

A. UNIT WILL NOT HEAT, CONVEYOR BELT WILL NOT MOVE.

- 1) Be sure the main circuit breaker is switched to the ON position.
- 2) Check to see if the toaster is plugged in and all controls are turned to the ON position.
- 3) Call the Toastmaster Service Help Desk at 314-678-6347.

B. UNIT HAS HEAT ONLY ON ONE SIDE, CONVEYOR BELT TURNS FREELY.

- 1) Call the Toastmaster Service Help Desk at 314-678-6347, as heating element may need replacing.

C. CONVEYOR WILL NOT TURN, UNIT HEATS PROPERLY.

To check for mechanical binding:

- 1) **DISCONNECT UNIT FROM POWER SOURCE.**
- 2) Remove 2 screws holding enclosure to the bottom of the unit.
- 3) Set unit on the legs and remove 4 screws on the back of the toaster.
- 4) Slide the enclosure off the unit and remove the back panel.
- 5) Loosen the four screws that hold the drive motor in place.
- 6) Slide the motor up allowing the drive chain to be removed from the sprockets.
- 7) Move the conveyor belt by hand to check for mechanical binding.
If conveyor moves freely, call the Toastmaster Service Help Desk at 314-678-6347, as the drive motor and/or speed control may need replacing.
- 8) Replace the enclosure by sliding it forward towards the front of the unit.
The front edge of the enclosure will slide beneath the toaster front.

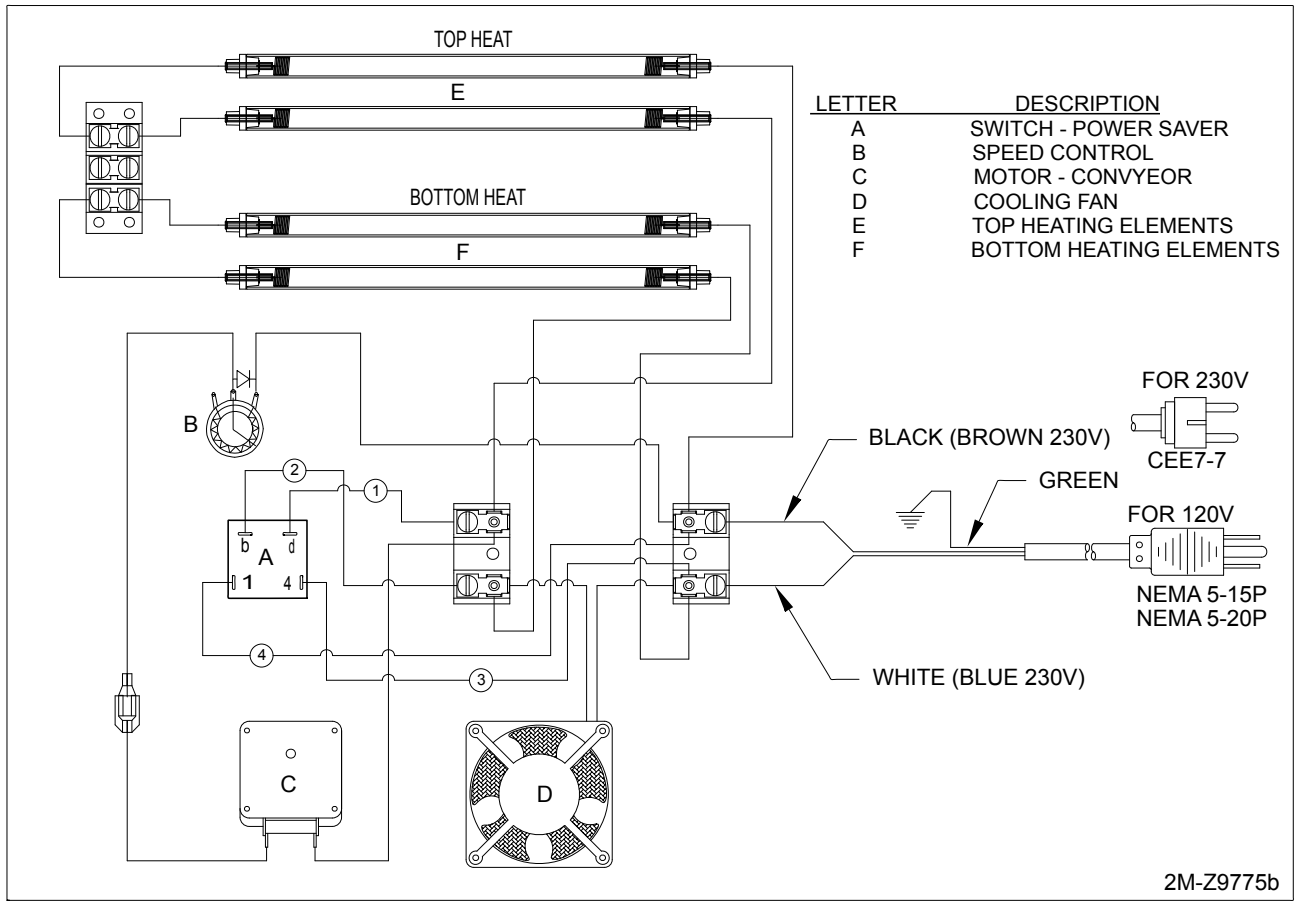
D. CONVEYOR TURNS AT ONE SPEED REGARDLESS OF SPEED CONTROL SETTING.

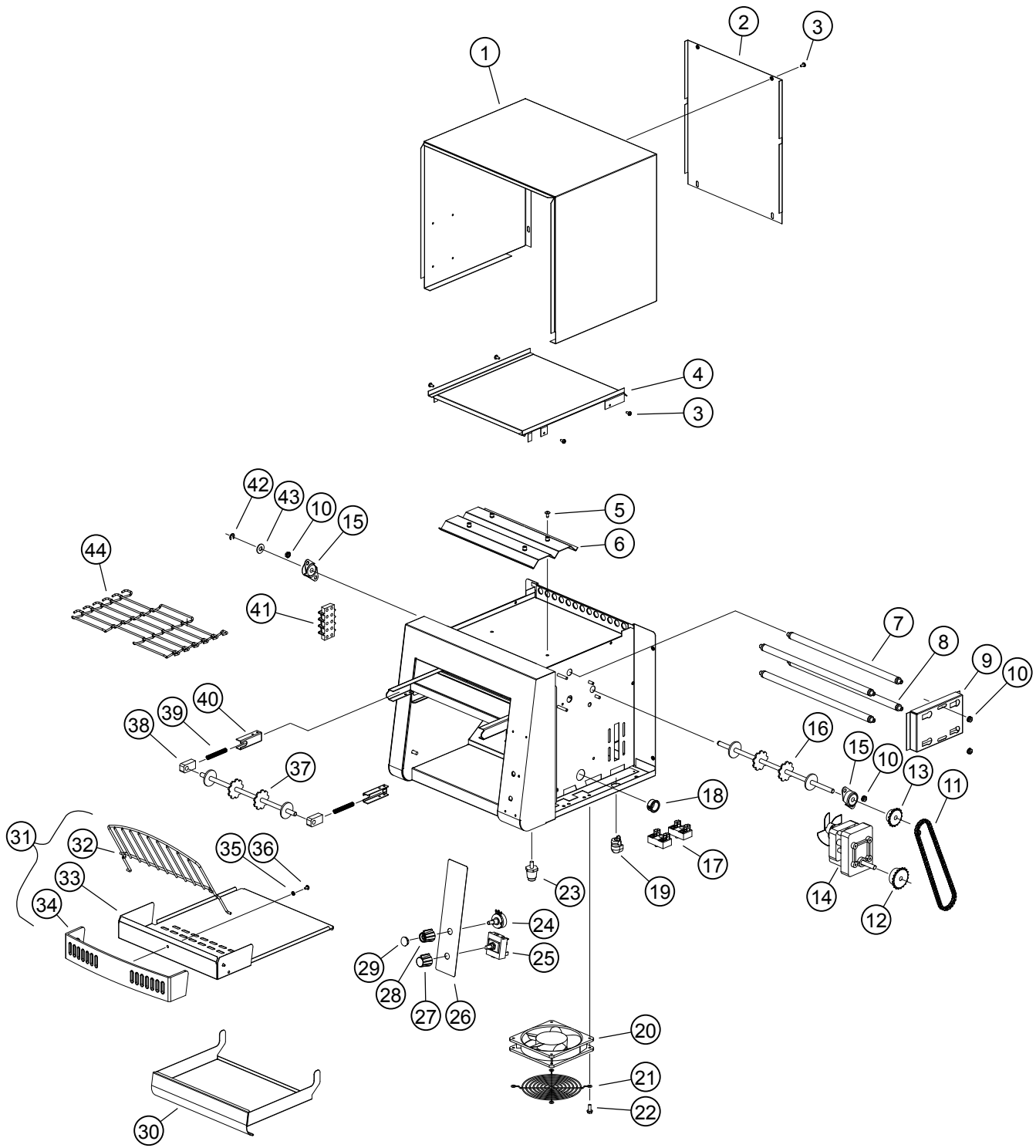
- 1) Call the Toastmaster Service Help Desk at 314-678-6347, as speed control **MAY** need replacing.

E. PRODUCT STICKING TO CONVEYOR OR SLIDE

Your Holman conveyor toaster is designed to toast product that is a current room temperature. **DO NOT** attempt to put frozen, refrigerated, or any butter or a butter substitute material in the toaster. Doing so may cause it to come out doughy or very moist, as well as possibly sticking to parts of the unit.

- 1) Follow the cleaning procedures listed on page 5.





2M-Z19588; Toastmaster Conveyor Toaster, TCT1, TCT2, TCT3



Model: TCT1 10" Conveyor Toaster

SK2820,

Rev. -

10/15/14

PARTS LIST

December 16, 2014, Rev. -

Model: TCT1 10" Conveyor Toaster				
Fig. No	Part Number	Quantity	Description	Application
1	HA-Z13166	1	BODY COVER	
2	HA-Z13180	1	BACK PANEL	
3	2C-200004	10	SCREW 6-32X5/16 THP SS	
4	HA-120260	1	TOP BAFFLE ASSEMBLY	
5	2C-6349	10	SCREW #8X3/8 B THP STL NP	
6	HA-402562	1	HEATER TUBE REFLECTOR, QC	
7	HA-120231	2	HEATER ASSY 350W 60V QCS1	
8	HA-120232	2	HEATER ASSY 450W 60V QCS1	
9	HA-Z13173	2	ELEMENT RETAINER	
10	2C-Z6929	7	10-24 KEPS NUT S.S.	
11	2P-200665	1	CHAIN, 17 1/2 INCH	
12	2P-200646	1	SPROCKET, 25B20 X 5/16	
13	2P-200645	1	SPROCKET, 25B17 X 5/16	
14	2U-Z13803	1	MOTOR,DRIVE,QCS-120V	
15	HA-112261	2	BEARING ASSY, 5/16 PTFE	
16	2A-202900	1	SHAFT, T710 DRIVE	
17	2E-Z9736	2	TERMINAL BLOCK - POWER	
18	2K-200464	1	BUSHING, WIRE RING 7/8"	
19	2K-Y3240	1	BUSHING HEYCO SR 17-2	
20	2U-200558	1	MOTOR,FAN 120V,15BTL	
21	2R-200562	1	FAN GUARD	
22	2C-Z5883	4	10-24 X 1/2 FZA SCREW SELF DRILLING	
23	2R-200709	4	LEG 1 INCH CHROME PLASTIC	
24	2J-200443	1	POTENTIOMETER, 250 OHM	
25	2E-200551	1	SWITCH ROTARY	
26	2M-Z19204	1	LABEL-CONTROL PANEL TCT1	
27	2R-200769	1	KNOB, POWERSAVER Q SERIES	
28	2R-200768	1	KNOB, CONTROL Q SERIES	
29	2R-200708	1	KNOB, CONTROL CAP	
30	HA-100560	1	TRAY, PULL OUT, QCS, 10	
31	PS-120366	1	CRUMB TRAY ASSEMBLY	
32	2B-200763	1	LOADUP, 10 EURO,WIRE	
33	HA-Z13172	1	CRUMB TRAY	
34	2R-Z19200	1	BURN GUARD - TOASTMASTER	
35	2C-200101	3	WASHER #6 SPLIT SS	
36	2C-200067	3	SCREW 6-32X1/4 THP SS	
37	2A-202904	1	SHAFT, 210HX IDLER	
38	2P-200700	2	BEARING-PTFE SPRING LOAD	
39	2P-200736	2	2 INCH BEARING SPRING	
40	HA-Z9743	2	SPRING RETAINER (2)	

2M-Z19588; Toastmaster Conveyor Toaster, TCT1, TCT2, TCT3

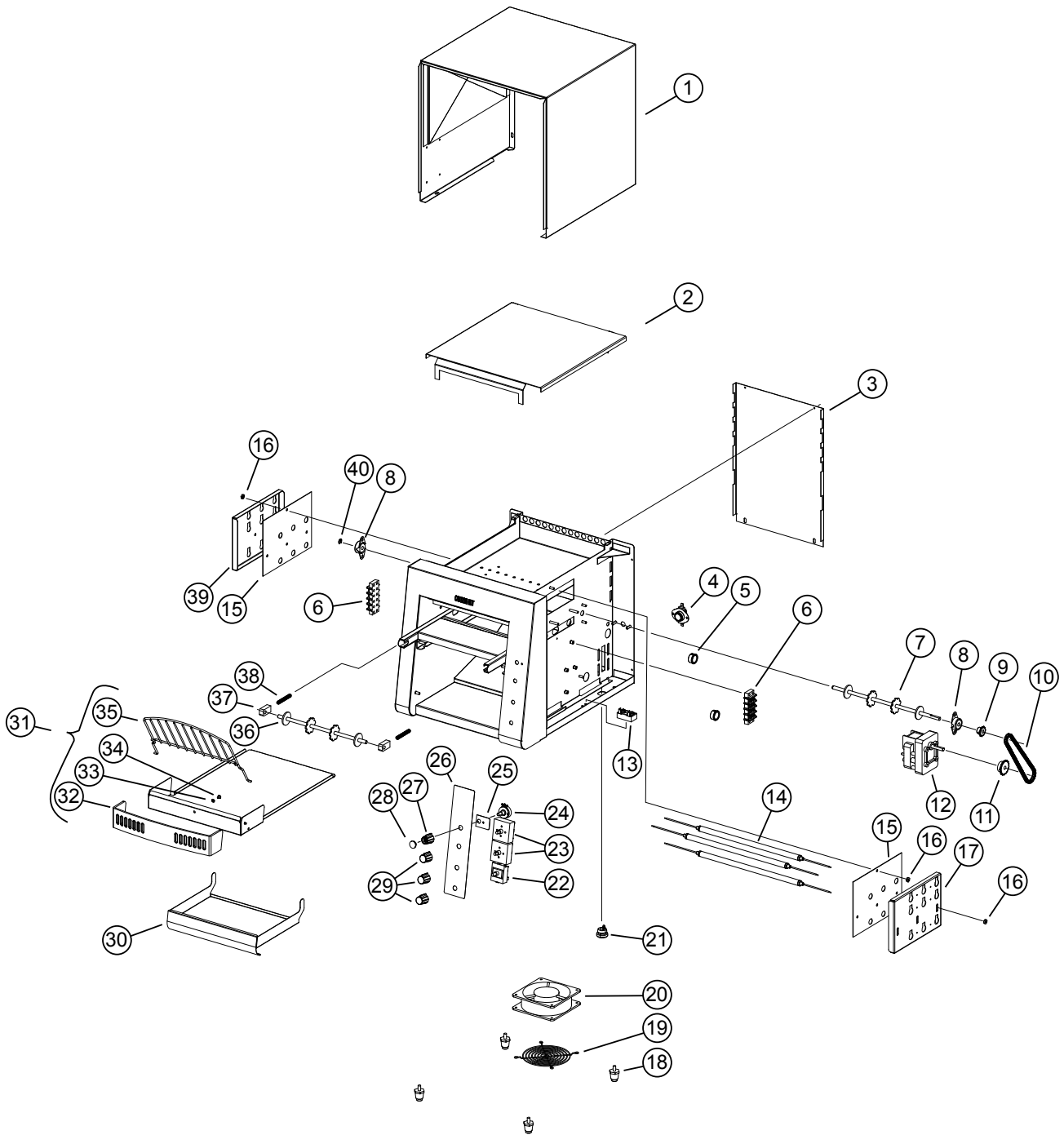
PARTS LIST

October 20, 2014, Rev. -

Model: TCT1 10" Conveyor Toaster				
Fig. No	Part Number	Quantity	Description	Application
41	2E-Z9737	1	TERMINAL BLOCK - ELEMENTS	
42	2A-200284	1	E-CLIP 5/16	
43	2C-200149	1	FLAT WASHER 5/16 ID 31NWX	
44	HN-160020	1	BELT, CONVEYOR 10 X 27 EZ	
44	2B-200601	27	BELT, CONVEYOR 10 IN #448	
NI	2M-Z9775	1	LABEL-WIRE DIAGRAM 350	
NI	HA-120241	1	CORD SET ASSEMBLY QCS-1	TCT1-120V
NI	HA-120242	1	CORDSET ASSY	TCT1-120C

2M-Z19588; Toastmaster Conveyor Toaster, TCT1, TCT2, TCT3

2M-Z19588; Toastmaster Conveyor Toaster, TCT1, TCT2, TCT3



Model: TCT2, TCT3 Conveyor Toaster

SK2836

Rev. -

12/16/2014

PARTS LIST

December 16, 2014, Rev. -

MODEL: TCT2 & TCT3 Conveyor Toaster				
Fig. No	Part Number	Qty	Description	Application
1	HB-120364	1	ENCLOSURE ASSY TCT2,3	
2	HB-120270	1	TOP BAFFLE ASSY QCS-2 LO	
3	HC-Z10412	1	BACK PANEL QCS-2	
4	2E-200566	1	SWTCH,RSET,0796-190F TRPS	
5	2K-200464	2	BUSHING, WIRE RING 7/8"	
6	2E-Z10406	2	TERMINAL BLOCK 4 POS	
7	2A-202900	1	SHAFT, T710 DRIVE	
8	HA-112261	2	BEARING ASSY, 5/16 PTFE	
9	2P-Z8779	1	SPROCKET 25P-11T .313 ID	
10	2P-150013	1	DRIVE CHAIN #25 ROLLER	
11	2P-200645	1	SPROCKET, 25B17 X 5/16	
12	2U-Z13803	1	MOTOR, DRIVE 120V CW	TCT2-120V, 120C
	HB-120262		MOTOR ASSY 208-240V	TCT3-208V, 240v
13	2E-Z9736	1	TERMINAL BLOCK - POWER	
14	HD-198042	6	HEATERTUBE, QCS-2-500, 12	TCT2-120V, 120C
	HO-197841	4	HTRTBE,QTZ-208V,703W@104V	TCT3-208V
	HO-197842		HTRTBE,QTZ,707W@120V,210H	TCT3-240V
15	HB-Z10857	2	ELEMENT GUIDE PLATE	TCT2
	HB-Z10858			TCT3
16	2C-200230	9	NUT 10-24 HEX SS	
17	HC-Z10390	1	ELEMENT RETAINER,RHT,QCS-	
18	2R-200709	4	LEG,1" CHRМ PLSTC,1/4-20	
19	2R-200562	1	FAN GUARD FOR MUFFIN FAN	
20	2U-200559	1	MOTOR, FAN 120V 12A12-BTM	TCT2-120V, 120C
	2U-200560		MOTOR, FAN, 240V 23BTL	TCT3-208V, 240V
21	2K-Y2968	1	BUSHING - HEYCO 7W-2	
22	2E-200551	1	SWITCH ROTARY	
23	2J-200538	2	SWITCH, EGO 240V INFINITE	TCT3-208V,240V
	2J-200539		SWITCH, EGO INFINITE, 120	TCT2-120V, 120C
24	HA-120239	1	SPEED CONTROL ASSEMBLY	TCT2-120V, 120C
	HB-120261		SPD CNTL ASSY, 500 OHM POT	TCT3-208V
25	2P-402728	1	POT, ANTI SPIN PLATE	
26	2M-Z19205	1	LABEL CONTROL PNL TCT2&3	
27	2R-200768	1	KNOB, CONTROL/SPEED	
28	2R-200708	4	KNOB, CONTROL CAP	
29	2R-200769	3	KNOB, POWERSVR-INF.CTRL	
30	HA-100560	1	TRAY, PULL OUT, QCS, 10	
31	PS-120367	1	CRUMB TRAY ASSY	TCT2, TCT3
32	2R-Z19200	1	BURN GUARD - TOASTMASTER	
33	2C-200101	1	WASHER #6 SPLIT SS	
34	2C-Z9875	7	SCREW, 6-32 X 5/8 PH,TH,	
35	2B-200763	1	LOADUP, 10 EURO,WIRE	
36	2A-202904	1	SHAFT, 210HX IDLER	
37	2P-200700	2	BRG SPRING LOADED	
38	2P-200736	2	2 INCH BEARING SPRING	
39	HC-Z10389	1	ELEMENT RETAINER,LFT,QCS-	
40	2A-200284	1	E-CLIP 5/16"	
NI	2B-200601	1	BELT,CONVEYOR-10"WIDE	

2M-Z19588; Toastmaster Conveyor Toaster, TCT1, TCT2, TCT3

PARTS LIST

December 16, 2014, Rev. -

MODEL: TCT2 & TCT3 Conveyor Toaster				
Fig. No	Part Number	Qty	Description	Application
NI	2M-Z10833	1	LABEL,-W.D.SERIES	TCT3-208V, 240V
NI	2M-Z10834	1	LABEL,W.D.,PARALLEL	TCT2-120V, 120C
NI	HA-120241	1	CORD SET ASSEMBLY QCS-1	TCT2-120V
NI	HA-120242	1	CORDSET ASSY CUL20	TCT2-120C
NI	HA-120245	1	CORDSET ASSY NEMA 6-20P	TCT3-208V
NI	HC-402134	1	NC10H SHUTTER ROD	TCT3
NI	HC-402206	1	HEAT SHUTTER, SWINGING	TCT3
NI	SP-160027	1	BELT-CONVEYOR, 10X35-1/2	TCT2

2M-Z19588; Toastmaster Conveyor Toaster, TCT1, TCT2, TCT3



Warranty Statement

Toaster warrants equipment that it manufactures to be free from defects in material and workmanship. Toaster's obligation is limited to repairing or replacing, at Toaster's option, without cost to the customer, any part found to be defective, as well as any labor or material expense required to replace the part.

Length of Warranty

This warranty is effective for a period of 12 months from the date the equipment is placed in service.

Exceptions

- This warranty is valid only for the original end user owner/operator of the equipment.
- This warranty does not apply to normal maintenance functions, including (but not limited to) improper operation, installation or the use of an improper utility supply.
- This warranty is valid only if the equipment is used in a commercial setting. The equipment is designed and constructed for commercial use by trained professionals only. Any use of the equipment in private or domestic applications immediately voids this warranty.
- This warranty does not apply to any parts, labor and material expenses for service that is not pre-approved and performed by a Toaster authorized service agent. Any such service immediately voids this warranty.
- This warranty does not apply to any parts, labor and material expenses associated with the installation of parts that are not factory-approved for use in the equipment. Any use of such parts immediately voids this warranty.
- This warranty is not valid if terms of payment have not been met.

Parts Warranty

Parts that are sold to repair our of warranty equipment are warranted for ninety (90) days. The part only is warranted, the labor to replace the parts is NOT warranted.

Portable Equipment


Toaster will not honor service bills that include travel time and mileage charges for servicing any products considered "Portable". These products should be taken to the Service Agency for repair.

A portable unit is a unit thats designed to sit on a countertop, has a powercord & is less than 50lbs installed.

Toaster reserves the right to change the design and specifications of this equipment or any related documentation at any time. The end user is not entitled to upgrades resulting from these changes.

This warranty is exclusive and supersedes all other warranties for the equipment, both expressed and implied. There are no implied warranties of merchantability or of fitness for a particular purpose.

The foregoing is Toaster's sole and exclusive obligation and the end user sole and exclusive remedy for any action including breach of contract or negligence. In no event shall Toaster be liable for a sum in excess of the purchase price of the equipment, or for any prospective or lost profits of the end user.

 is a registerd trademark of Toaster, A Middleby Company. All rights reserved.