



Model U411
SERVICE MANUAL

Manual No. 513688

Rev.0

This manual provides basic information about the machine. Instructions and suggestions are given covering its operation and care.

The illustrations and specifications are not binding in detail. We reserve the right to make changes to the machine without notice, and without incurring any obligation to modify or provide new parts for machines built prior to date of change.

DO NOT ATTEMPT to operate the machine until instructions and safety precautions in this manual are read completely and are thoroughly understood. If problems develop or questions arise in connection with installation, operation, or servicing of the machine, contact Stoelting.



stoeltingfoodservice.com

Stoelting Foodservice Equipment
502 Highway 67
Kiel, WI 53042-1600
U.S.A.

Main Tel: 800.558.5807
Fax: 920.894.7029

Customer Service: 888.429.5920
Fax: 800.545.0662
Email: foodservice@stoelting.com

© 2014 PW Stoelting, LLC

A Few Words About Safety

Safety Information

Read and understand the entire manual before operating or maintaining Stoelting equipment.

This manual provides the operator with information for the safe operation and maintenance of Stoelting equipment. As with any machine, there are hazards associated with their operation. For this reason safety is emphasized throughout the manual. To highlight specific safety information, the following safety definitions are provided to assist the reader.

The purpose of safety symbols is to attract your attention to possible dangers. The safety symbols, and their explanations, deserve your careful attention and understanding. The safety warnings do not by themselves eliminate any danger. The instructions or warnings they give are not substitutes for proper accident prevention measures.

If you need to replace a part, use genuine Stoelting parts with the correct part number or an equivalent part. We strongly recommend that you do not use replacement parts of inferior quality.



Safety Alert Symbol:

This symbol Indicates danger, warning or caution. Attention is required in order to avoid serious personal injury. The message that follows the symbol contains important information about safety.

Signal Word:

Signal words are distinctive words used throughout this manual that alert the reader to the existence and relative degree of a hazard.



The signal word “WARNING” indicates a potentially hazardous situation, which, if not avoided, may result in death or serious injury and equipment/property damage.



The signal word “CAUTION” indicates a potentially hazardous situation, which, if not avoided, may result in minor or moderate injury and equipment/property damage.

CAUTION

The signal word “CAUTION” not preceded by the safety alert symbol indicates a potentially hazardous situation, which, if not avoided, may result in equipment/property damage.

NOTE (or NOTICE)

The signal word “NOTICE” indicates information or procedures that relate directly or indirectly to the safety of personnel or equipment/property.

TABLE OF CONTENTS

| Section | Description | Page |
|----------------|--|-------------|
| 1 | Description and Specifications | |
| 1.1 | Description..... | 1 |
| 1.2 | Specifications | 2 |
| 1.3 | Component Settings..... | 3 |
| 2 | Refrigeration and Wiring Diagrams | |
| 2.1 | Refrigeration Diagram | 5 |
| 2.2 | Wiring Diagrams | 6 |
| 3 | Replacement Parts | |
| 3.1 | Brushes, Decals & Lubrication | 9 |
| 3.2 | Trays..... | 9 |
| 3.3 | Auger Shaft & Front Door Parts..... | 10 |
| 3.4 | Cab Tubing | 11 |
| 3.5 | Pump Parts..... | 12 |
| 3.6 | Spigot Assembly | 14 |
| 3.7 | Panels & Screws | 14 |
| 3.8 | Cab Components..... | 15 |
| 3.9 | Electrical Components..... | 16 |
| 3.10 | Cab Condensing Unit | 17 |
| 3.11 | Kits & Miscellaneous | 17 |
| 3.12 | Motor Assembly | 18 |
| 3.13 | Right Side | 19 |
| 3.14 | Left Side | 20 |

SECTION 1 DESCRIPTION AND SPECIFICATIONS

1.1 DESCRIPTION

The Stoelting U411 floor model machine is pressure fed. It is equipped with fully automatic controls to provide a uniform product.

This manual is designed to assist qualified service personnel with information regarding the refrigeration and wiring specifications, replacement parts and settings of the U411.



Figure 1-1 Model U411 I2 Machine

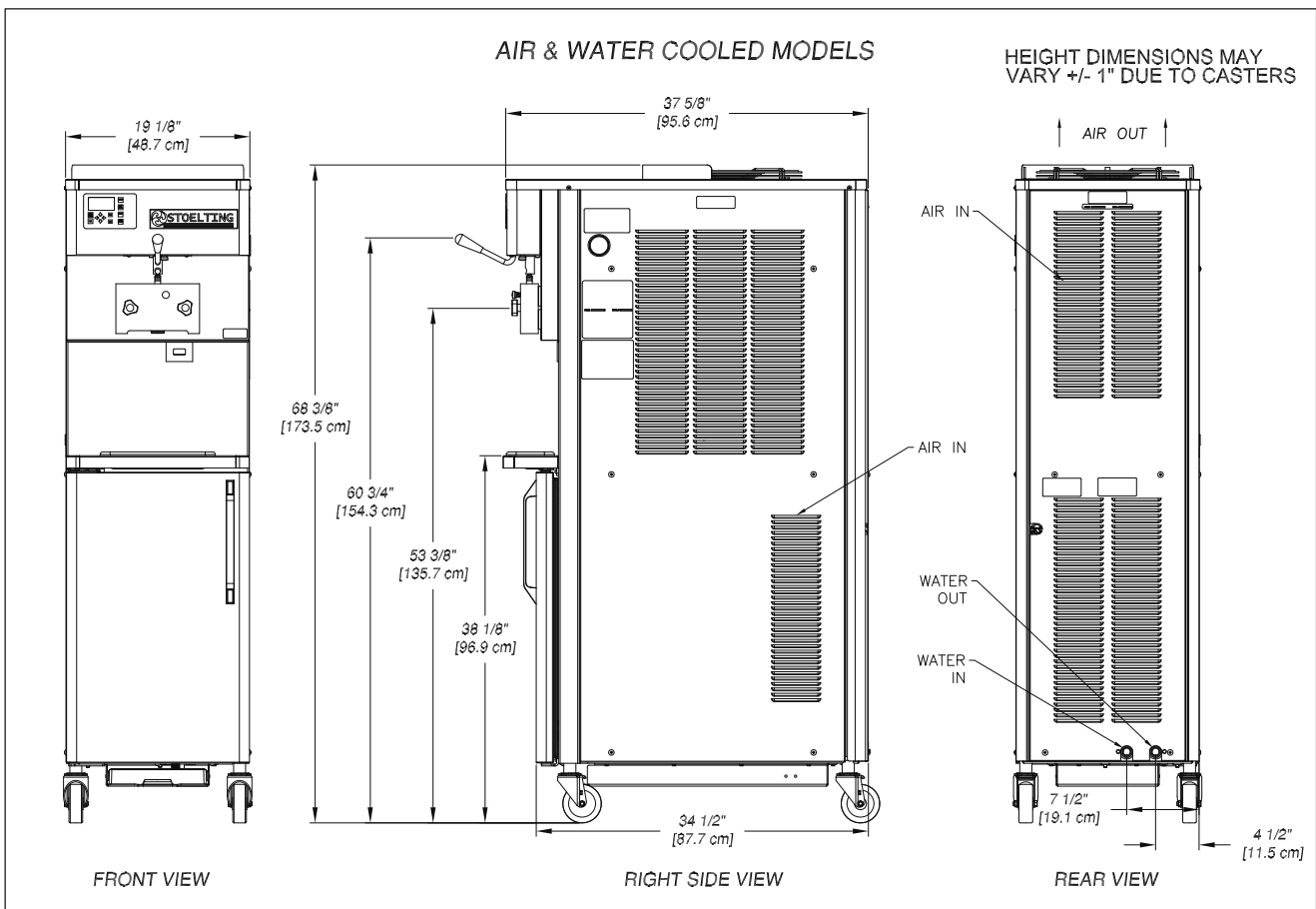


Figure 1-2 Dimensions

1.2 SPECIFICATIONS

| Model U411 | | |
|--|--|-----------------------------------|
| Dimensions width height depth | Machine | with crate |
| | 19-1/8" (48,6 cm) | 27" (68,6 cm) |
| | 68-3/8" (173,7 cm) | 78" (198,1 cm) |
| | 37-5/8" (95,6 cm) | 48" (121,9 cm) |
| Weight | 450 lbs (204,1 kg) | 650 lbs (294,8 kg) |
| Electrical running amps connection type | 1 Phase, 208-240 VAC, 60Hz | 3 Phase, 208-240 VAC, 60Hz |
| | 18A | 15A |
| | NEMA L6-30P | NEMA L15-30P |
| Compressor | 15,000 Btu/hr Scroll™ Compressor Cabinet - 1,300 Btu/hr Compressor (R-134a) | |
| Drive Motor | 2 hp | |
| Air Flow | Air cooled units require 3" (7,6 cm) air space at the back and sides. | |
| Plumbing Fittings | Water cooled units require 1/2" N.P.T. water and drain fittings. | |
| Hopper Volume | 8 gallons (30,29 liters) | |
| Freezing Cylinder Volume | 1.33 gallon (5,03 liters) | |

| U411 | |
|---------------------------------------|----------------------------|
| Refrigerant | R-404A |
| Charge | (W/C) 26 oz (A/C) 40 oz |
| Suction Pressure (at 72°F) | 19-21 psig |
| Discharge Pressure | 220-230 psig |
| Cabinet | |
| Refrigerant | R-134A |
| Charge | 8 oz |
| Cab Suction Pressure | 33 psig |

1.3 COMPONENT SETTINGS

Following are the settings for the components in the U411 I2 machine.

A. COMPRESSOR WINDINGS

When testing the compressor windings the resistance through the windings should be as follows:

| Compressor | Electrical | S to C | R to C |
|------------|------------|--------|--------|
| 282076 | 1 PH | 3.31Ω | 1.28Ω |
| 282116 | 1 PH | 1.70Ω | 1.02Ω |
| 282117 | 3 PH | 1.91Ω | 1.54Ω |
| 282111 | 1 PH | 16.40Ω | 10.20Ω |

B. CAPACITORS

Refer to the following table for the capacitance of all the capacitors in the machine:

| Capacitor | Part | Rating | |
|--------------------|--------|------------|---------|
| | | MFD | VAC |
| Compressor - Start | 230638 | 88-106 MFD | 330 VAC |
| Compressor - Start | 231049 | 88-106 MFD | 330 VAC |
| Compressor - Run | 230653 | 40 MFD | 370 VAC |
| Compressor - Run | 231048 | 40 MFD | 440 VAC |
| Motor - Start | 230622 | 200 MFD | 250 VAC |
| Motor - Run | 231075 | 30 MFD | 370 VAC |
| Fan Motor | 230654 | 5 MFD | 400 VAC |
| Cab Compressor | 230667 | 80 MFD | 300 VAC |

C. PUMP PRESSURE SWITCH

The pump pressure switch, located in the cabinet, maintains 21-24 psig in the mix line.

D. TEMPERATURE CONTROL SENSOR

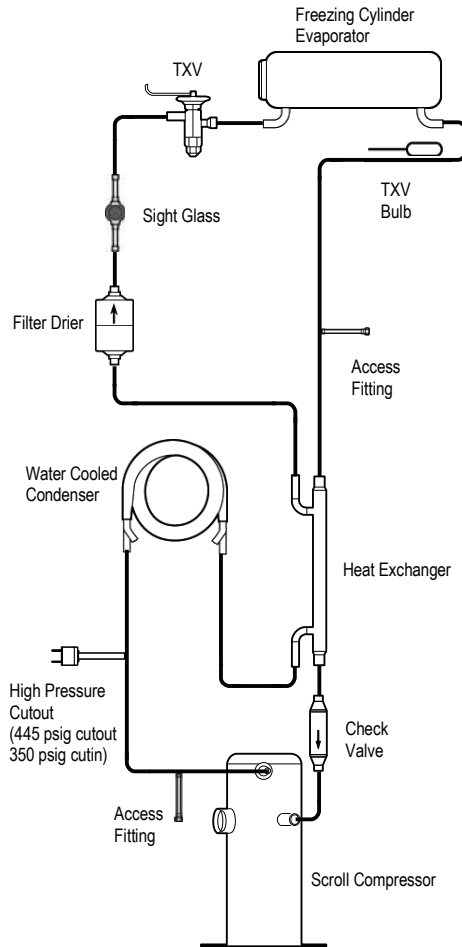
The following table shows the relationship between the thermistor resistance and the suction line temperature.

| °F | Resistance | °F | Resistance |
|-----|------------|-----|------------|
| -22 | 176950 | 40 | 26100 |
| -20 | 165200 | 42 | 24725 |
| -18 | 154300 | 44 | 23400 |
| -16 | 144200 | 46 | 22175 |
| -14 | 134825 | 48 | 21000 |
| -12 | 126125 | 50 | 19900 |
| -10 | 118050 | 52 | 18875 |
| -8 | 110550 | 54 | 17900 |
| -6 | 103550 | 56 | 17000 |
| -4 | 97075 | 58 | 16125 |
| -2 | 91025 | 60 | 15325 |
| 0 | 85400 | 62 | 14550 |
| 2 | 80150 | 64 | 13825 |
| 4 | 75275 | 66 | 13150 |
| 6 | 70725 | 68 | 12500 |
| 8 | 66475 | 70 | 11875 |
| 10 | 62500 | 72 | 11300 |
| 12 | 58800 | 74 | 10750 |
| 14 | 55325 | 76 | 10250 |
| 16 | 52100 | 78 | 9750 |
| 18 | 49075 | 80 | 9300 |
| 20 | 46250 | 82 | 8850 |
| 22 | 43600 | 84 | 8450 |
| 24 | 41125 | 86 | 8050 |
| 26 | 38800 | 88 | 7675 |
| 28 | 36625 | 90 | 7325 |
| 30 | 34575 | 92 | 7000 |
| 32 | 32675 | 94 | 6675 |
| 34 | 30875 | 96 | 6375 |
| 36 | 29175 | 98 | 6100 |
| 38 | 27600 | 100 | 5825 |

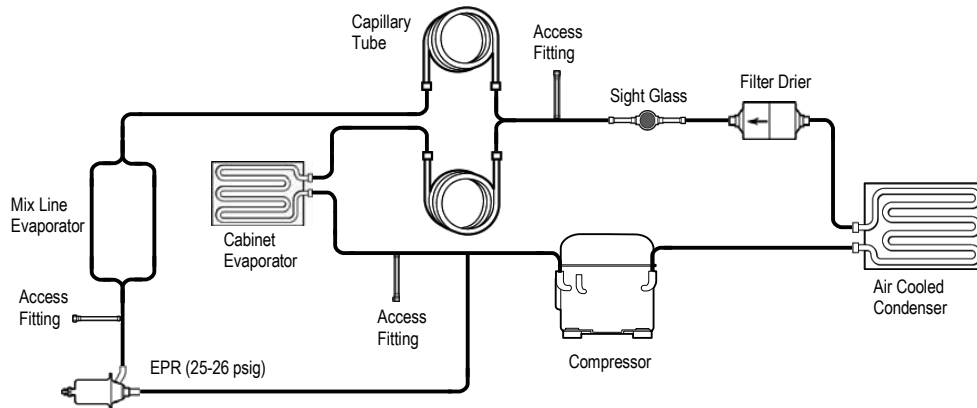
SECTION 2 REFRIGERATION AND WIRING DIAGRAMS

2.1 REFRIGERATION DIAGRAM

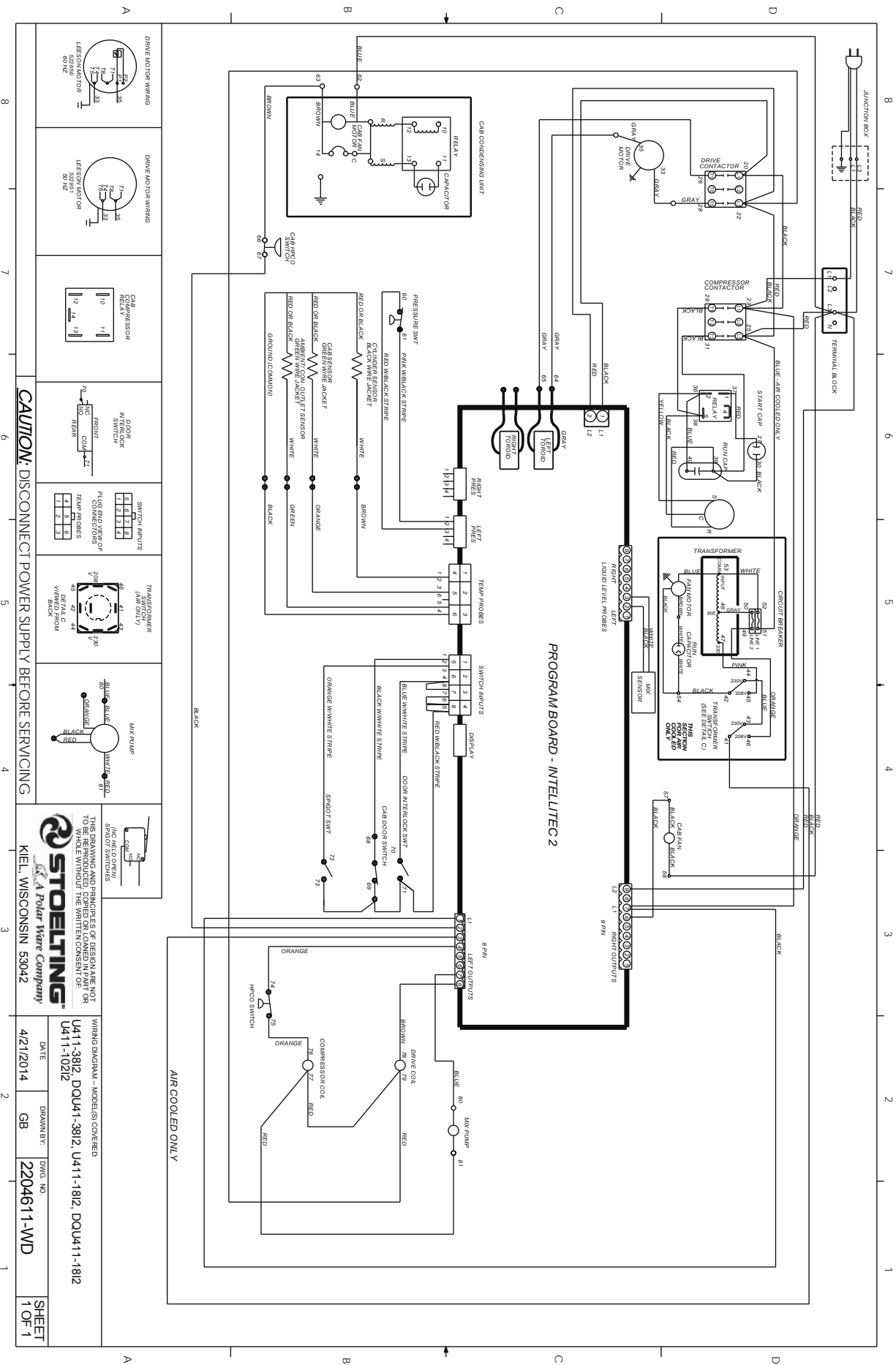
**Freezing Cylinder Refrigeration
R404A**

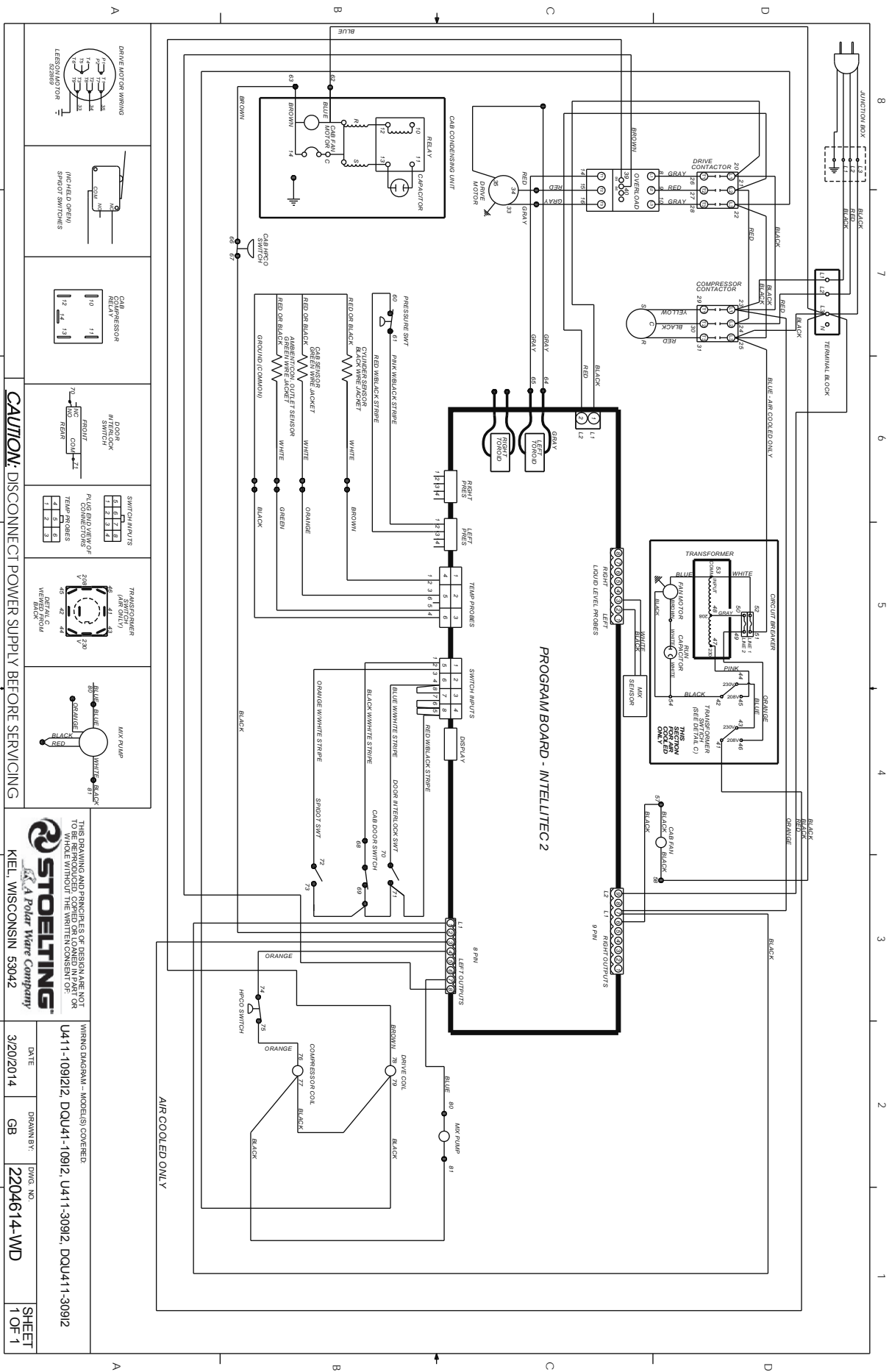


**Cabinet Refrigeration
R134A**



2.2 WIRING DIAGRAMS



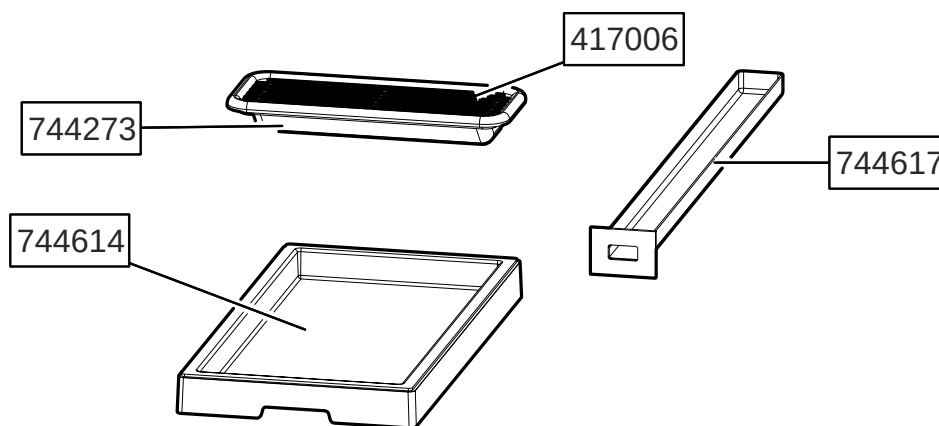


SECTION 3 REPLACEMENT PARTS

3.1 BRUSHES, DECALS & LUBRICATION

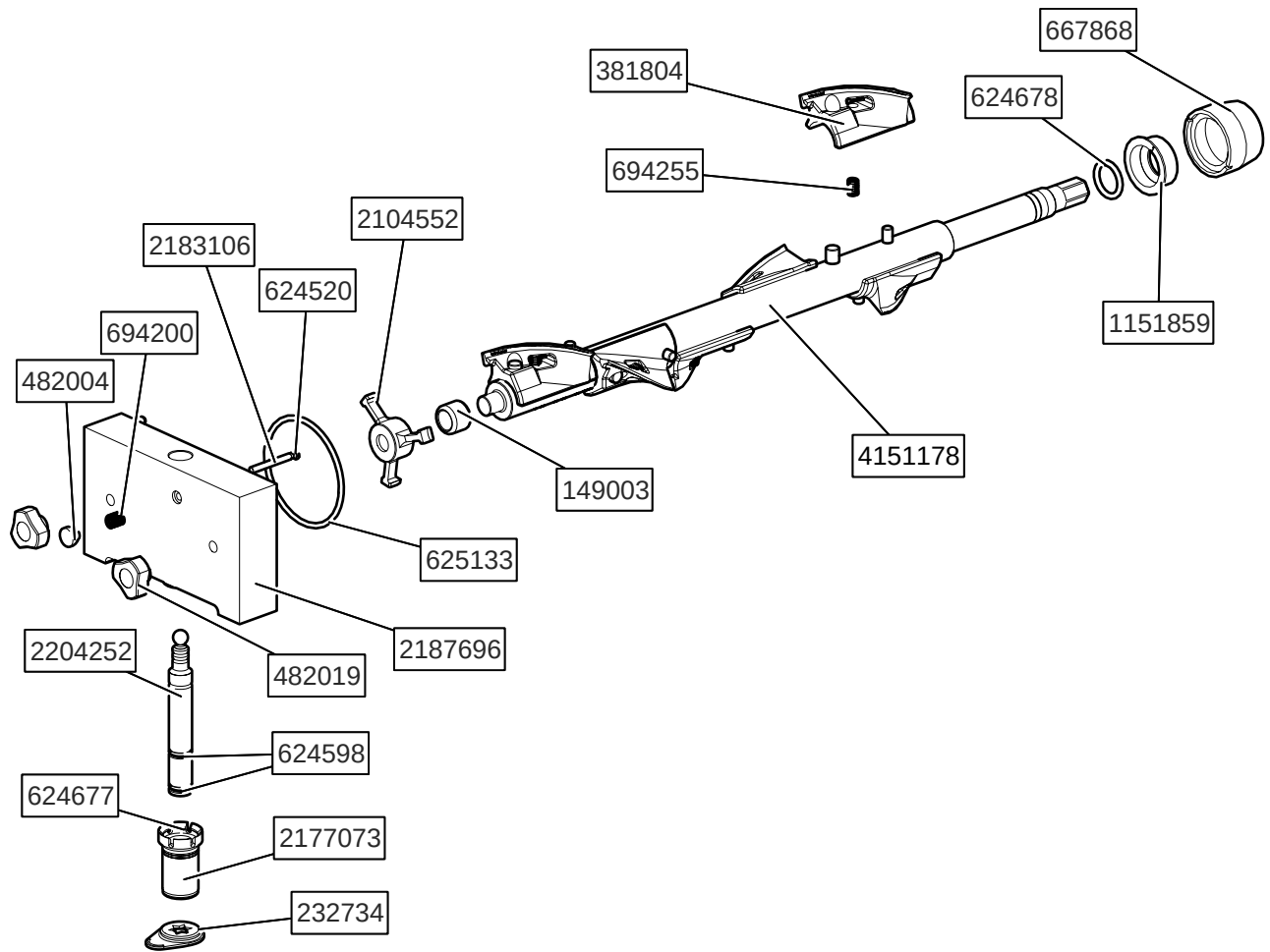
| Part Number | Description | Quantity |
|-------------|---|----------|
| 208135 | Brush - 4" X 8" X 16" (Barrel) | 1 |
| 208380 | Brush - 1/4" X 3" X 14" | 1 |
| 208387 | Brush - 5" X 1/2" X 24" | 1 |
| 208465 | Brush - 1" X 3-1/2" X 18" | 1 |
| 208467 | Brush - 3/8" X 1" X 5" | 1 |
| 236067 | Card - Cleaning Instruction | 1 |
| 324065 | Decal - Water Inlet | 1 |
| 324105 | Decal - Caution Electrical Shock | 6 |
| 324106 | Decal - Caution Electrical Wiring Materials | 1 |
| 324107 | Decal - Caution Hazardous Moving Parts | 3 |
| 324141 | Decal - Caution Rotating Blades | 1 |
| 324200 | Decal - Manual Reset | 1 |
| 324208 | Decal - Attention Refrigerant Leak Check | 2 |
| 324509 | Decal - Cleaning Instructions | 1 |
| 324566 | Decal - Wired According To | 1 |
| 324584 | Decal - Adequate Ventilation 3" | 3 |
| 324803 | Decal - Domed Stoelting Logo (Large) (Header Panel) | 1 |
| 324859 | Decal - Domed Dairy Queen Logo (Header Panel) | 1 |
| 324888 | Decal - Fan Motor Reset | 1 |
| 324901 | Decal - Transformer Switch | 1 |
| 324909 | Decal - USB Port | 1 |
| 324942 | Decal - Thermistor ID | 1 |
| 508048 | Lubricant - Spline (2 oz Squeeze Tube) | 1 |
| 508135 | Petrol Gel - 4 oz Tube | 1 |
| 513680 | Manual - Owner's | 1 |
| 513687 | Manual - Owner's (DQU411) | 1 |
| 636073 | DVD - Start-Up & Cleaning | 1 |
| 1998209 | Overrun Quick Reference | 1 |
| 1998210 | Card - Cleaning Instructions (DQ) | 1 |
| C-1000-26C | Decal - Made In USA | 1 |

3.2 TRAYS



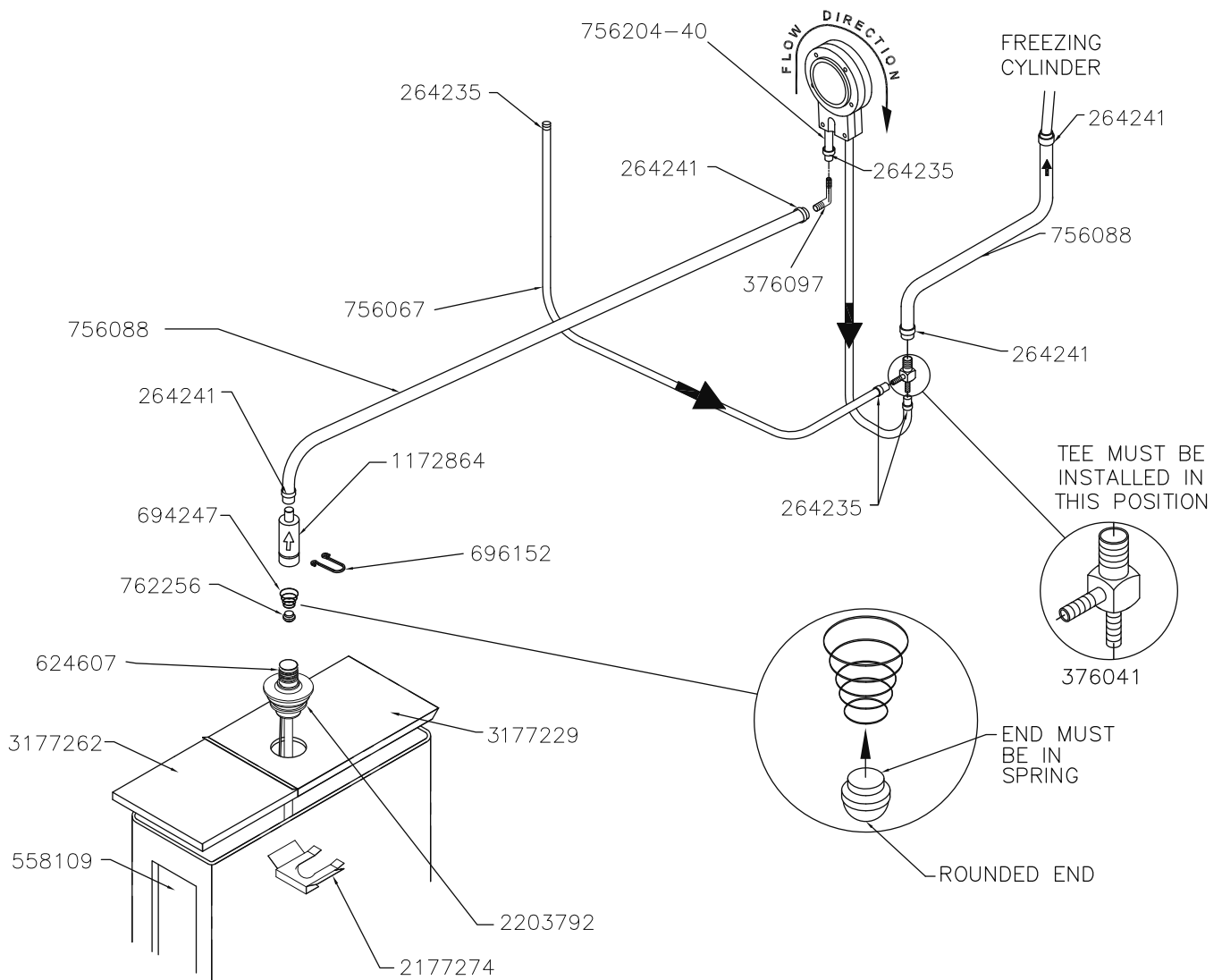
| Part Number | Description | Quantity |
|-------------|----------------------------|----------|
| 417006 | Grid - Drip Tray (Metal) | 1 |
| 744273 | Tray - Drip | 1 |
| 744614 | Condensate Pan (Under Cab) | 1 |
| 744617 | Tray - Drain | 1 |

3.3 AUGER SHAFT & FRONT DOOR PARTS



| Part Number | Description | Quantity |
|-------------|-----------------------------------|----------|
| 149003 | Bushing - Front Auger Support | 1 |
| 232734 | Cap - Rosette | 1 |
| 381804 | Auger Flight | 6 |
| 482004 | Knob (Air Bleed Valve) | 1 |
| 482019 | Knob - Front Door (Black) | 2 |
| 624520 | O-Ring - Air Bleed Valve - Black | 1 |
| 624598 | O-Ring - Spigot - Black | 2 |
| 624677 | O-Ring - Spigot Extension - Black | 1 |
| 624678 | O-Ring - Rear Seal - Black | 2 |
| 625133 | O-Ring - Front Door - Black | 1 |
| 667868 | Seal - Rear Auger (Orange) | 1 |
| 694200 | Spring - Air Bleed Valve | 1 |
| 694255 | Spring - Auger Flight | 6 |
| 1151859 | Adapter - Rear Seal (Code 1) | 1 |
| 2104552 | Support - Front Auger | 1 |
| 2177072 | Extension - Spigot - 1.5" | 1 |
| 2177073 | Extension - Spigot - 2.5" | 1 |
| 2177074 | Extension - Spigot - 3.2" | 1 |
| 2183106 | Valve - Air Bleed (Front Door) | 1 |
| 2187696 | Front Door | 1 |
| 2204252 | Spigot Body | 1 |
| 4151178 | Auger Shaft | 1 |

3.4 CAB TUBING

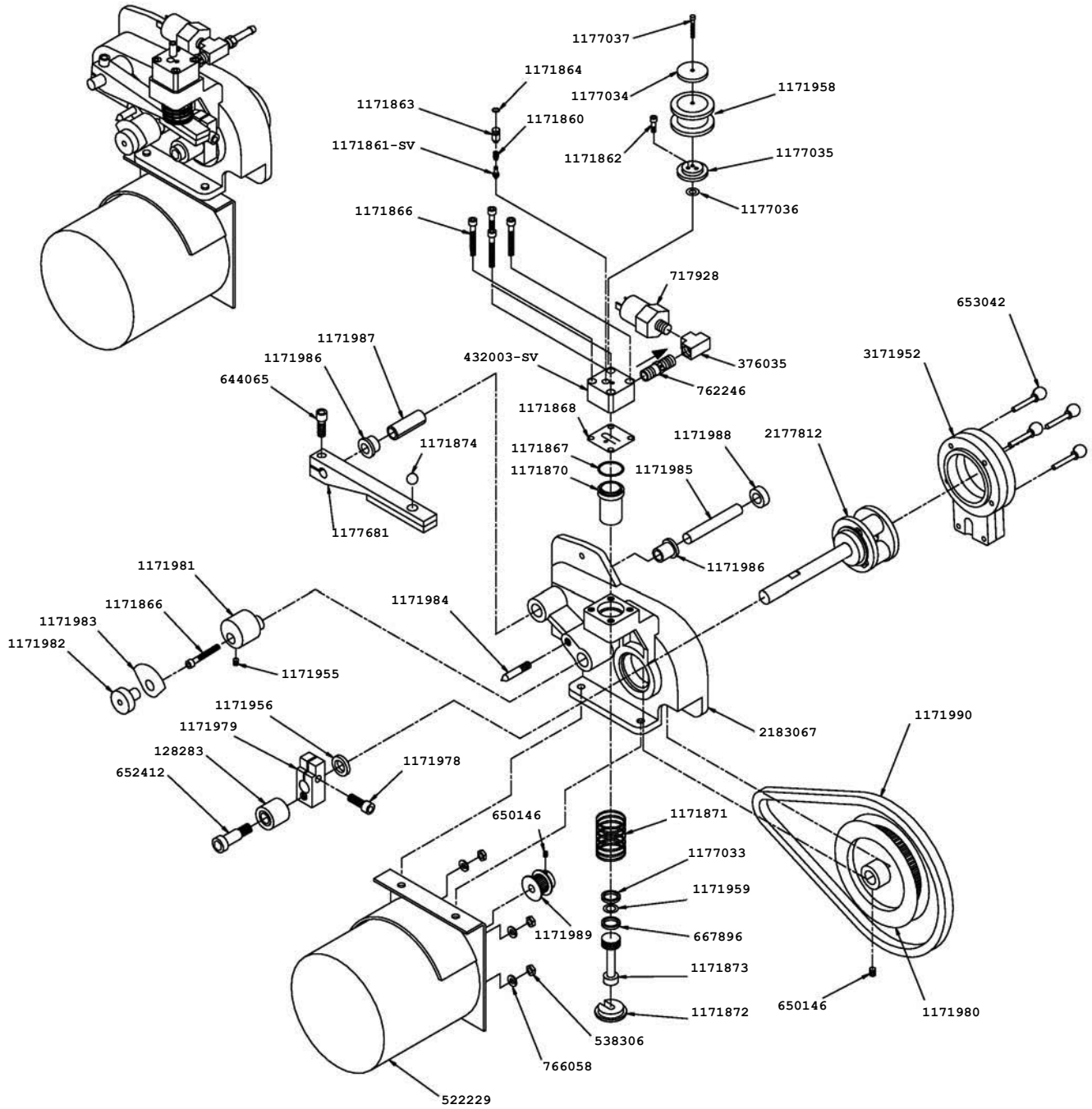


| Part Number | Description | Quantity |
|-------------|---|------------|
| 264235 | Clamp - Metal (1/4" ID Tubing) | 4 |
| 264241 | Clamp - Metal (1/2" ID Tubing) | 4 |
| 376041 | Tee Connector - 3-Way (Stainless) | 1 |
| 376097 | Elbow - Barbed (1/2" - 1/4") | 1 |
| 558109 | Mix Container Only | 1 |
| 624607-5 | O-Ring - Check Valve Body - Black (5 Pack) | 2 |
| 694247 | Spring - Check Valve | 1 |
| 696152 | Clip - Lock (Check Valve) | 1 |
| 756067 | Tubing - 1/4" ID - Clear - Air Line (25' Increments) (Per Inch) | 13" |
| 756088 | Tubing - 1/2" ID - Clear - Mix Line (25' Increments) (Per Inch) | 21" and 6" |
| 756204 | Tubing - 1/4" ID - Pump (50' Box Only) (Per Inch) | - |
| 756204-40 | Tubing - 1/4" ID - Pump (Pre-Cut 40" Piece) | 1 |
| 762256 | Check Valve - Mix Outlet | 1 |
| 1172864 | Check Valve - Mix In Line (Outer) | 1 |
| 2177274 | Clip - Retaining (Mix Probe To Cover) | 1 |
| 2203792 | Pick-Up Tube - Mix | 1 |
| 3177229 | Cover - Rear (Mix Container) | 1 |
| 3177262 | Cover - Front (Mix Container) | 1 |

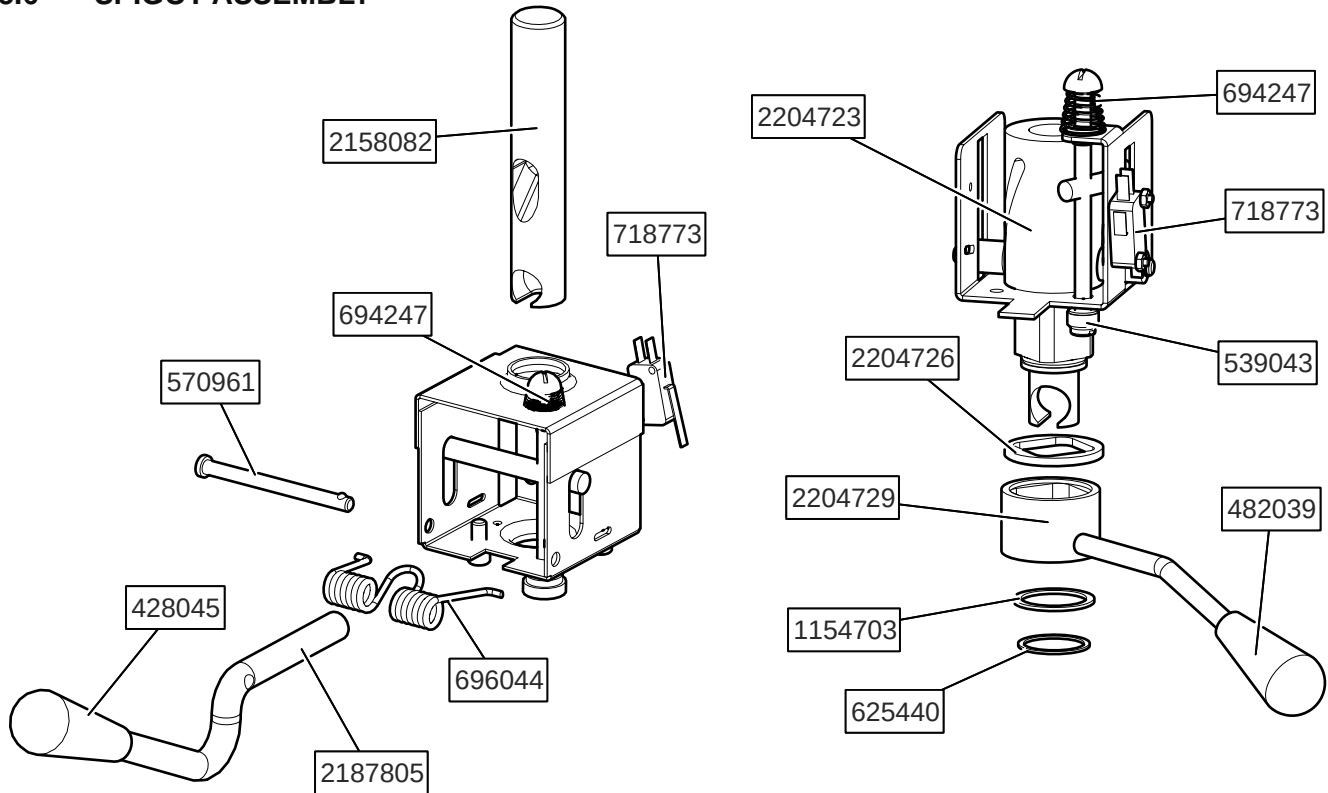
3.5 PUMP PARTS

| Part Number | Description | Quantity |
|-------------|--|----------|
| 128283 | Crank Arm Roller Assy (Requires #652412) (Cab) | 1 |
| 128295 | Rocker Arm Assembly w/Screw (Cab) | 1 |
| 128296 | Piston & Cylinder Sleeve Assembly (Pump) (Cab) | 1 |
| 376035 | Tee Connector - Air Pressure Switch (Cab) | 1 |
| 432003-SV | Valve Head Only w/Tubes (Pump) (Cab) | 1 |
| 522229 | Motor - Pump (Cab) | 1 |
| 538306 | Nut - Motor Mounting (Cab) | 4 |
| 644065 | Screw - Rocker Arm (Cab) | 1 |
| 650146 | Set Screw - Pulley (Cab) | 1 |
| 652412 | Screw - Shoulder (Crank Arm Roller Assembly) (Cab) | 1 |
| 653042 | Screw - Thumb (Cover Clamp) (Cab) | 4 |
| 667896 | Seal - Bumper (Piston) (Pump) (Cab) | 1 |
| 717928 | Switch - Pressure (Pump) (Cab) | 1 |
| 762246 | Check Valve - Air Line (Stainless) (Cab) | 1 |
| 766058 | Washer - Lock - Motor Mounting (Cab) | 4 |
| 1171860 | Spring - Check Valve (Pump) (Cab) | 1 |
| 1171861-SV | Needle Valve w/O-Ring (Pump) (Cab) | 1 |
| 1171862 | Screw - Air Filter Retainer (Cab) | 1 |
| 1171863 | Valve Guide (Pump) (Cab) | 1 |
| 1171864 | O-Ring - Needle Valve (Pump) (Cab) | 1 |
| 1171866 | Screw - Valve Head (Cab) | 5 |
| 1171867 | O-Ring (Pump Cylinder Sleeve) (Cab) | 1 |
| 1171868 | Reed Valve (Pump) (Cab) | 1 |
| 1171870 | Cylinder Sleeve (Pump) (Cab) | 1 |
| 1171871 | Spring - Piston (Cab) | 1 |
| 1171872 | Piston Spring Seat (Cab) | 1 |
| 1171873 | Piston (Pump) (Cab) | 1 |
| 1171874 | Ball Bearing - Single (Pump Rocker Arm) (Cab) | 1 |
| 1171955 | Set Screw - Eccentric (Cab) | 1 |
| 1171956 | Washer - Crank Arm - Nylon (Cab) | 1 |
| 1171958 | Filter - Air (Pump) (Cab) | 1 |
| 1171959 | O-Ring (Piston) (Pump) (Cab) | 1 |
| 1171978 | Screw - Crank Arm (Cab) | 1 |
| 1171979 | Crank Arm (Cab) | 1 |
| 1171980 | Pulley - Large (Pump) (Cab) | 1 |
| 1171981 | Eccentric (Cab) | 1 |
| 1171982 | Knob - Crank Arm Overrun Setting (Cab) | 1 |
| 1171983 | Dial - Crank Arm Overrun Setting (Cab) | 1 |
| 1171984 | Pointer - Crank Arm Overrun Setting (Cab) | 1 |
| 1171985 | Dowel Pin - Rocker Arm (Cab) | 1 |
| 1171986 | Flange Bearing - Rocker Arm (Cab) | 2 |
| 1171987 | Wick - Rocker Arm (Cab) | 1 |
| 1171988 | Collar - Rocker Arm Dowel Pin (Cab) | 1 |
| 1171989 | Pulley - Small (Cab) | 1 |
| 1171990 | Belt (Pump) (Cab) | 1 |
| 1171994 | Sleeve Bearing - Crank Arm (Cab) | 1 |
| 1177033 | Bumper Ring (Piston) (Pump) (Cab) | 1 |
| 1177034 | Air Filter Retainer - Top (Cab) | 1 |
| 1177035 | Air Filter Retainer - Bottom (Cab) | 1 |
| 1177036 | Washer - Air Filter Retainer (Cab) | 1 |
| 1177037 | Screw - Air Filter (Cab) | 1 |
| 1177681 | Rocker Arm (Cab) | 1 |
| 2177812 | Roller Carrier Assembly Kit (Cab) | 1 |
| 2183067 | Pump Body Casting (Cab) | 1 |
| 3171952 | Cover - Clamp (Two Piece Black) (Cab) | 1 |
| 4183089 | Pump Assembly w/Motor | 1 |

3.5 PUMP PARTS (CONTINUED)



3.6 SPIGOT ASSEMBLY

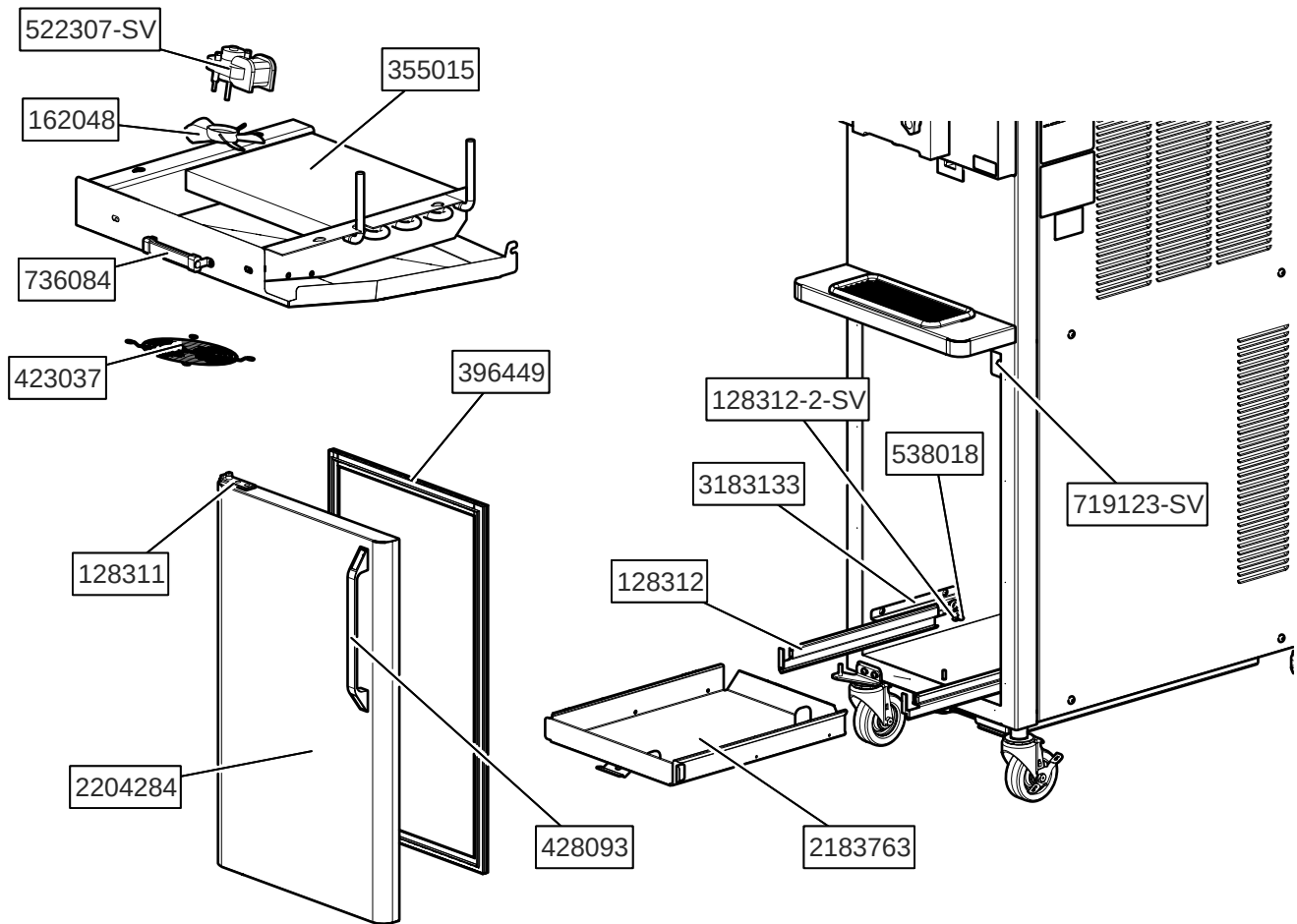


| Part | Description | Quantity |
|---------|---|----------|
| 428045 | Knob - Spigot Handle (Black) | 1 |
| 428082 | Handle Assembly (General Market) | 1 |
| 482039 | Knob - Spigot Handle (Black) | 1 |
| 539043 | Nut - Spigot Adjustment | 1 |
| 570961 | Pin - Cotterless Clevis (Spigot Handle) | 1 |
| 625440 | Retaining Ring - Spigot Handle | 1 |
| 694247 | Spring - Cone (Spigot Cam) | 1 |
| 696044 | Spring - Torsion (Spigot Handle) | 1 |
| 718773 | Switch - Limit (Spigot) | 1 |
| 1154703 | Washer (Spigot Handle) | 1 |
| 2158082 | Glide - Spigot Socket | 1 |
| 2187805 | Handle - Spigot (Handle Only) | 1 |
| 2204726 | Bushing - Spacer (Spigot Handle) | 1 |
| 2204729 | Handle Only (DQ) | 1 |
| 2204723 | Spigot Cam | 1 |
| 2204732 | Cam Assembly (DQ) | 1 |

3.7 PANELS & SCREWS

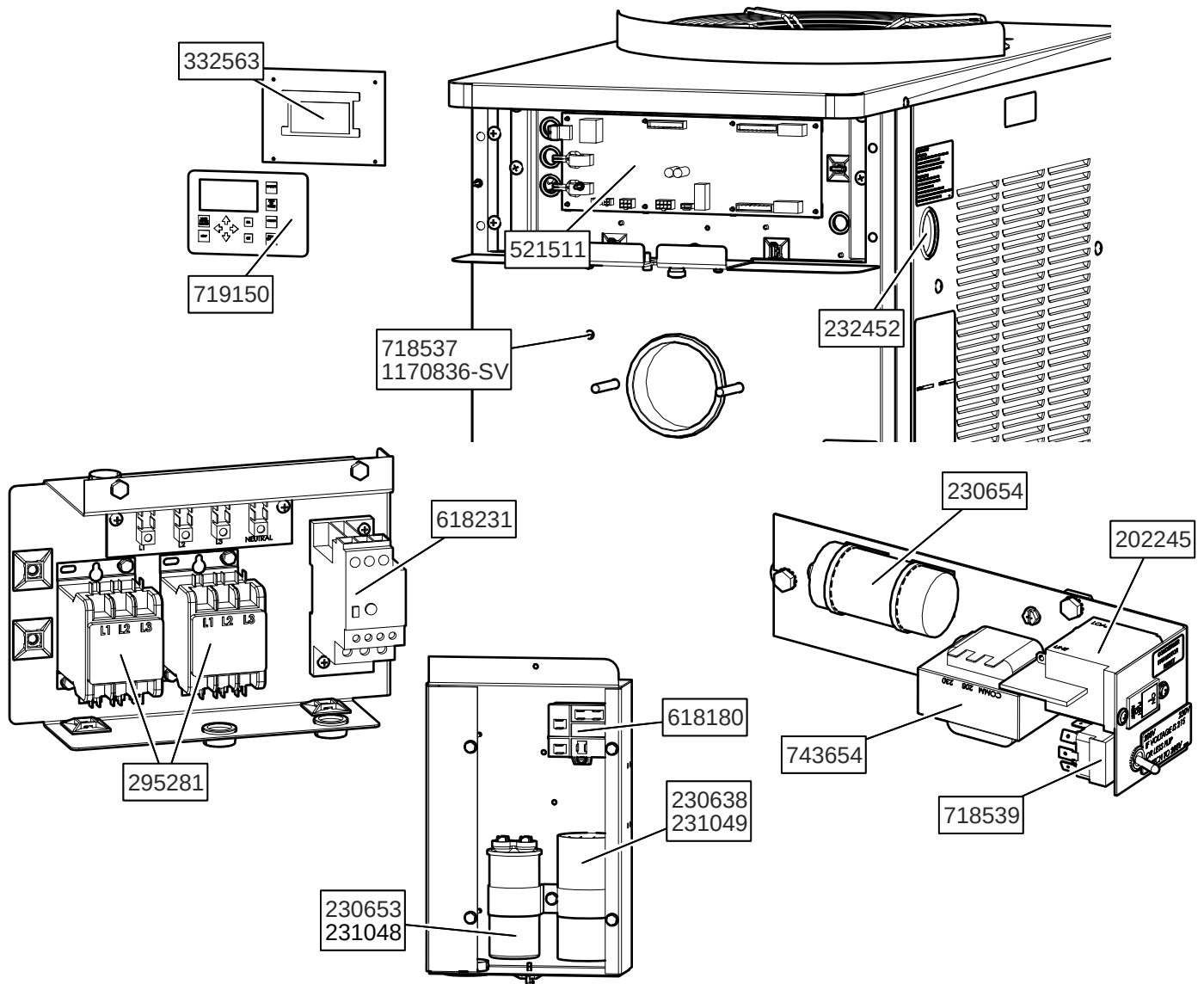
| Part | Description | Quantity |
|-----------|---|----------|
| 584200-37 | Hole Plug - L.H. Side Panel | 1 |
| 647653 | Screw - Panel (Top) | - |
| 647899 | Screw - Panel (Side & Rear) & Cab (Door Handle) | - |
| 2204286 | Panel - Drip Tray Support | 1 |
| 2204329 | Panel - Top (Air-Cooled) | 1 |
| 2204339 | Panel - R.H. Side | 1 |
| 2204340 | Panel - L.H. Side | 1 |
| 2204555 | Panel - Top (Water-Cooled) | 1 |
| 2204635 | Panel - Header | 1 |
| 2204641 | Panel - Rear | 1 |

3.8 CAB COMPONENTS



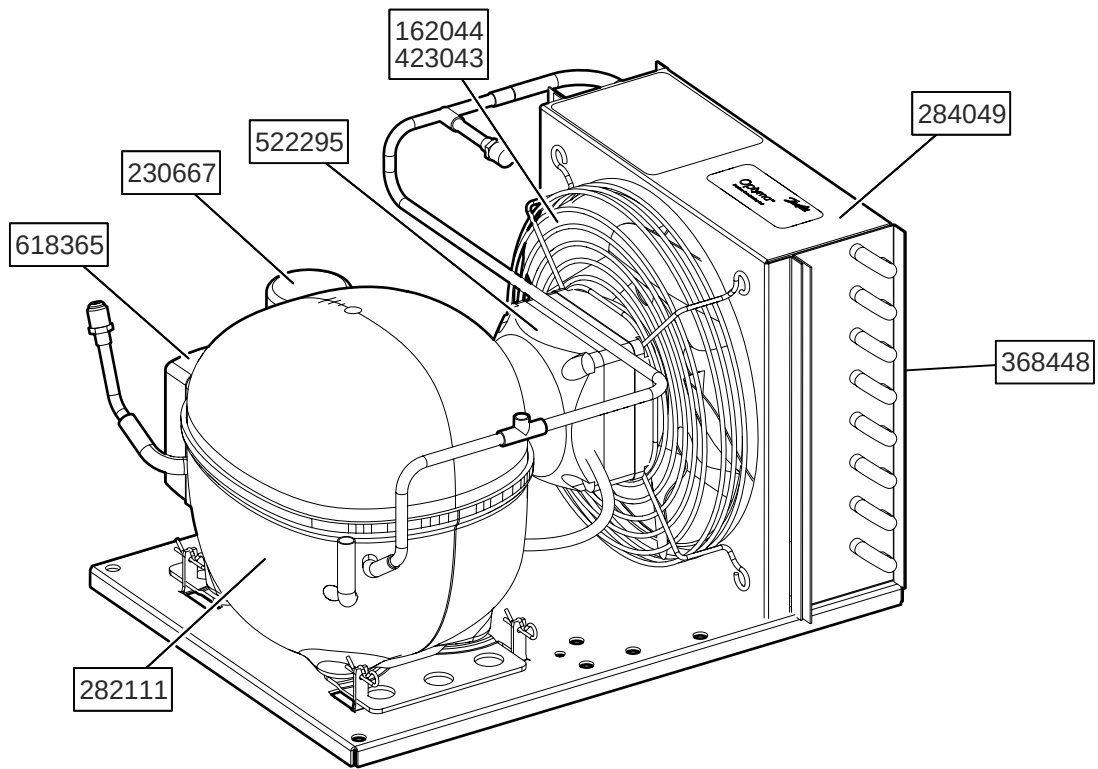
| Part | Description | Quantity |
|-------------|---|----------|
| 128311 | Hinge - Door (Top & Bottom) (Cab) | 1 |
| 128312 | Mix Container Holder Assembly w/Rollers (Cab) | 1 |
| 128312-2-SV | Bearings (For #128312) (4 Required) (Cab) | 4 |
| 162048 | Blade - Fan (Evaporator) (Cab) | 1 |
| 264243 | Clamp - Metal (3/8" ID Tubing) (Cab) | 1 |
| 266018 | Clip - "J" (Hose Holder) (Cab) | 1 |
| 266041 | Clip - Tubing (Push-In) | 2 |
| 266076 | Clip - Bag In Box (Cab) | 1 |
| 302045 | Plug & Cord (Cab) | 1 |
| 355015 | Evaporator (Cab) | 1 |
| 396449 | Gasket - Door (Cab) | 1 |
| 423037 | Guard - Fan (Cab Evaporator) | 1 |
| 428093 | Handle - Cab Door (Cab) | 1 |
| 522305 | Motor - Fan (Evaporator Assembly) (50 Hz) (Cab) | 1 |
| 522307-SV | Motor - Fan (Evaporator Assembly) (60 Hz) (Cab) | 1 |
| 538018 | Nut - Acorn (Pressure Switch) (Cab) | 4 |
| 672799 | Sensor - Hopper & Cab (Green) | 1 |
| 719123-SV | Switch Only - Cab Door (Hamlin Reed Switch) (Cab) | 1 |
| 736084 | Thermometer (Cab) | 1 |
| 756079 | Tubing - 3/8" ID - Clear - Mix Line (25' Increments) (Per Inch) (Cab) | 32" |
| 2183763 | Mix Container Drawer (Cab) | 1 |
| 2204284 | Door Assembly (Cab) | 1 |
| 3183133 | Slide Mount - Cab Sides (Cab) | 1 |

3.9 ELECTRICAL COMPONENTS



| Part | Description | Quantity |
|------------|--|----------|
| 202245 | Circuit Breaker | 1 |
| 229148 | Cable - IntelliTec2 (Control Board to Display Board) | 1 |
| 230638 | Capacitor - Start (#282047 & #282059 Compressors) | 1 |
| 230653 | Capacitor - Run (#282062 Compressor) | 1 |
| 230654 | Capacitor (#357096 Fan Motor) | 1 |
| 231048 | Capacitor - Run (#282076 Compressor) | 1 |
| 231049 | Capacitor - Start (#282076 Compressor) | 1 |
| 232452 | Plug - USB (2") | 1 |
| 295281 | Contactor (Compressor / Drive) | 2 |
| 332563 | Board - Display Module | 1 |
| 521511 | Board - Program - IntelliTec2 | 1 |
| 618180 | Relay (#282116 & #282076 Compressors) | 1 |
| 618231 | Relay - Overload (3 PH) | 1 |
| 718537 | Switch - Limit - Safety (Cab) | 1 |
| 718539 | Switch - Toggle (208/230V) (Air-Cooled) | 1 |
| 719150 | Switch - Membrane Strip (Touchpad & Ribbon) | 1 |
| 743654 | Transformer - Booster | 1 |
| 1170836-SV | Switch Assembly - Limit (Door Interlock) | 1 |

3.10 CAB CONDENSING UNIT

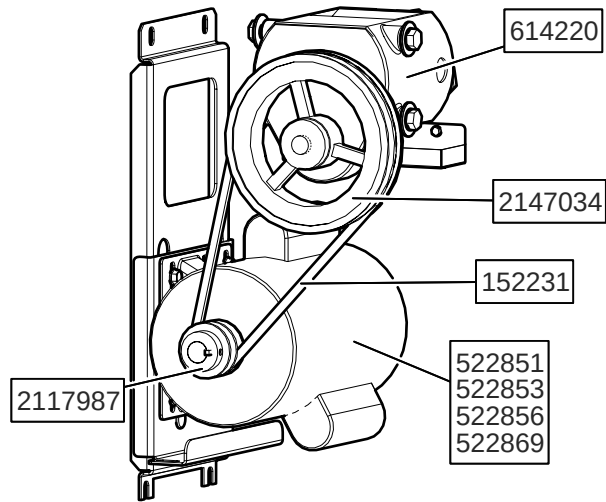


| Part | Description | Quantity |
|--------|---|----------|
| 162044 | Blade - Fan (#285073 Condensing Unit) (Cab) | 1 |
| 230667 | Capacitor - Start (#285073 Condensing Unit) (Cab) | 1 |
| 282111 | Compressor (#285073 Condensing Unit) (Cab) | 1 |
| 284049 | Condenser (#285073 Condensing Unit) (Cab) | 1 |
| 285073 | Condensing Unit (Cab) | 1 |
| 368448 | Filter - Air (#285073 Condensing Unit) (Cab) | 1 |
| 423043 | Guard - Fan (#285073 Condensing Unit) (Cab) | 1 |
| 522295 | Motor - Fan (#285073 Condensing Unit) (Cab) | 1 |
| 618365 | Relay - Start (#285073 Condensing Unit) (Cab) | 1 |

3.11 KITS & MISCELLANEOUS

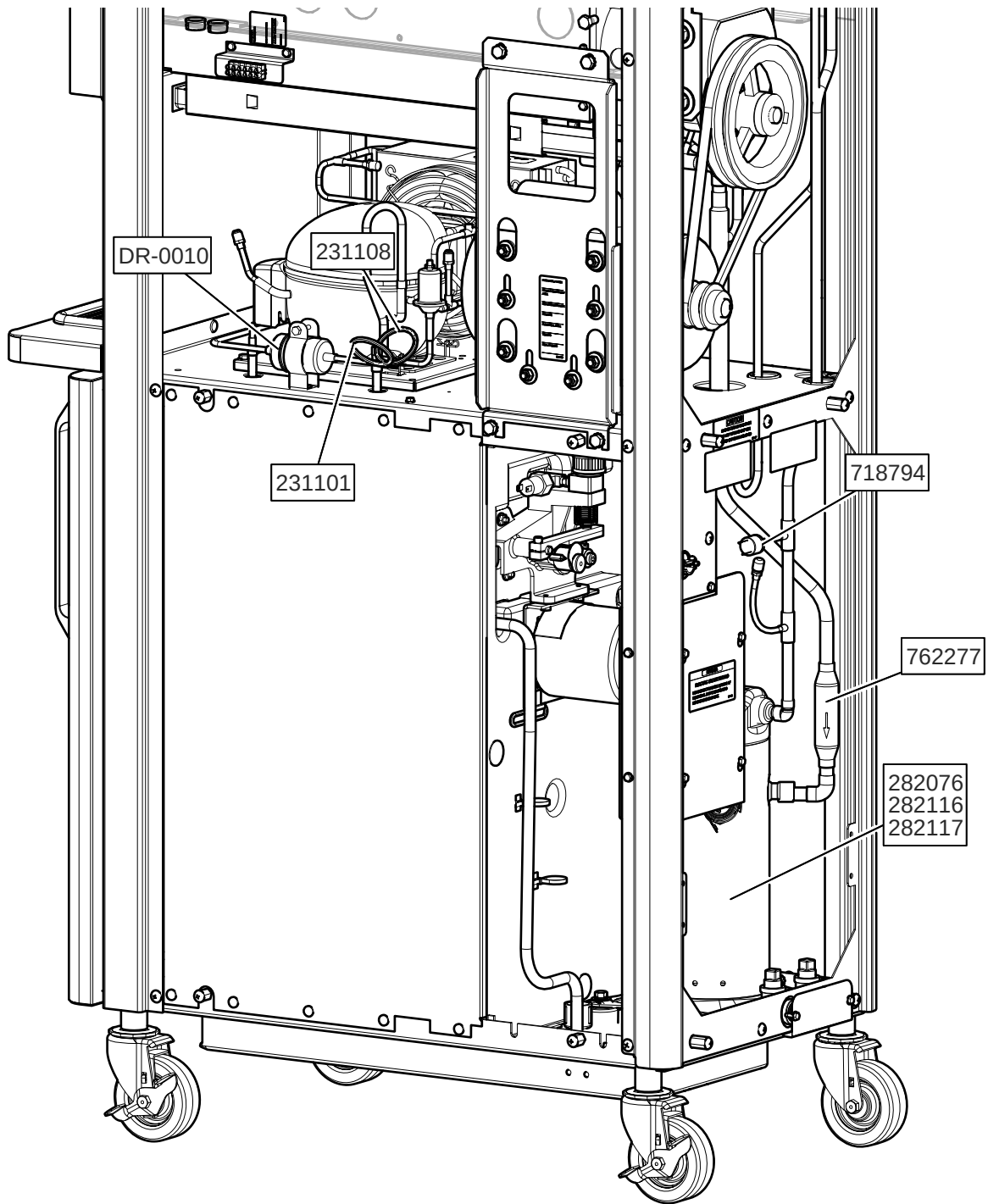
| Part | Description | Quantity |
|---------|---|----------|
| 236068 | Card - Start-Up (IntelliTec2) | 1 |
| 244138 | Caster - Non-Locking (4") (Each) | 2 |
| 244139 | Caster - Locking (4") (Each) | 2 |
| 302042 | Cord - Power (1 PH, 60 Hz) | 1 |
| 302043 | Cord - Power (3 PH, 60 Hz) | 1 |
| 764385 | Valve Kit - Water Valve Repair | - |
| 1177436 | Air Compressor Kit (Reed Valve, Piston & Cylinder Sleeve) (Cab) | - |
| 2177917 | Brush Kit | - |
| 2187066 | O-Ring & Bearing Kit | - |

3.12 MOTOR ASSEMBLY



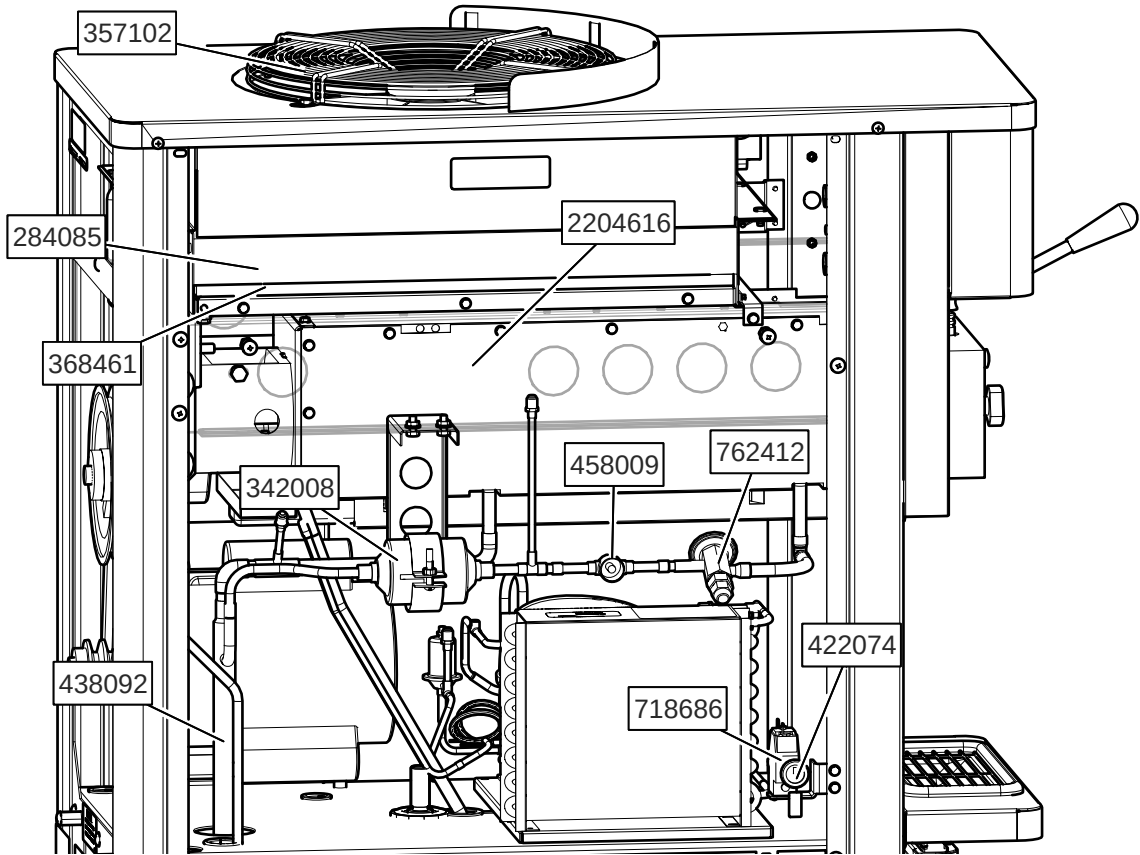
| Part | Description | Quantity |
|---------|---|----------|
| 152231 | Belt - Gripnotch (AX32) (50/60 Hz) (2 Required) | 2 |
| 522851 | Motor - Drive (1 PH) (50 Hz) | 1 |
| 522853 | Motor - Drive (3 PH) (50 Hz) | 1 |
| 522856 | Motor - Drive (1 PH) (60 Hz) | 1 |
| 522869 | Motor - Drive (3 PH) (60 Hz) | 1 |
| 614220 | Speed Reducer | 1 |
| 2117987 | Pulley - Drive Motor | 1 |
| 2147034 | Pulley - Speed Reducer | 1 |

3.13 RIGHT SIDE



| Part | Description | Quantity |
|---------|--|----------|
| 231101 | Cap Tube Only (Mix Cooling) (Cab) | 1 |
| 231108 | Cap Tube Only (Cab Evaporator Inlet) (Cab) | 1 |
| 762978 | Valve - EPR (Cab) | 1 |
| 778027 | Wrench - Allen (Cab) | 1 |
| DR-0010 | Drier - Filter (1/4" OD) (Cap Tube) | 1 |
| 282076 | Compressor - 1 PH - 50 Hz (No Capacitors) | 1 |
| 282116 | Compressor - 1 PH - 60 Hz (Scroll) (No Capacitors) | 1 |
| 282117 | Compressor - 3 PH - 60 Hz (Scroll) | 1 |
| 718794 | Switch - High Pressure Cutout | 1 |
| 762277 | Valve - Magna Check | 1 |

3.14 LEFT SIDE



| Part | Description | Quantity |
|---------|---|----------|
| 284085 | Condenser (Air-Cooled) | 1 |
| 284104 | Condenser (Water-Cooled) | 1 |
| 342008 | Drier | 1 |
| 357102 | Motor - Fan (Air-Cooled Condenser) (Includes Blade & Guard) | 1 |
| 368461 | Filter - Air (Condenser) | 1 |
| 422074 | Grommet - Rubber (High Pressure Cutout) | 1 |
| 438092 | Heat Exchanger | 1 |
| 458009 | Sight Glass | 1 |
| 718686 | Switch - Pressure (Manual Reset) | 1 |
| 762412 | Valve - Expansion (Sporlan) | 1 |
| 763181 | Valve - Water | 1 |
| 2204616 | Evaporator Assembly | 1 |



**DOMESTIC WARRANTY
(Including Mexico)
SOFT SERVE / SHAKE EQUIPMENT**

1. **Scope:**
PW Stoelting, L.L.C. (“Stoelting”) warrants to the first user (the “Buyer”) that the freezing cylinders, hoppers, compressors, drive motors, speed reducers, and augers of Stoelting soft serve / shake equipment will be free from defects in materials and workmanship under normal use and proper maintenance appearing within five (5) years, and that all other components of such equipment manufactured by Stoelting will be free from defects in material and workmanship under normal use and proper maintenance appearing within twelve (12) months after the date that such equipment is originally installed.

2. **Disclaimer of Other Warranties:**

THIS WARRANTY IS EXCLUSIVE; AND STOELTING HEREBY DISCLAIMS ANY IMPLIED WARRANTY OF MERCHANTABILITY OR FITNESS FOR PARTICULAR PURPOSE.

3. **Remedies:**
Stoelting’s sole obligations, and Buyer’s sole remedies, for any breach of this warranty shall be the repair or (at Stoelting’s option) replacement of the affected component at Stoelting’s plant in Kiel, Wisconsin, or (again, at Stoelting’s option) refund of the purchase price of the affected equipment, and, during the first twelve (12) months of the warranty period, deinstallation/reinstallation of the affected component from/into the equipment. Those obligations/remedies are subject to the conditions that Buyer (a) signs and returns to Stoelting, upon installation, the Start-Up and Training Checklist for the affected equipment, (b) gives Stoelting prompt written notice of any claimed breach of warranty within the applicable warranty period, and (c) delivers the affected equipment to Stoelting or its designated service location, in its original packaging/crating, also within that period. Buyer shall bear the cost and risk of shipping to and from Stoelting’s plant or designated service location.

4. **Exclusions and Limitations:**
This warranty does not extend to parts, sometimes called “wear parts”, which are generally expected to deteriorate and to require replacement as equipment is used, including as examples but not intended to be limited to o-rings, auger flights, auger seals, auger support bushings, and drive belts. All such parts are sold

AS IS.

Further, Stoelting shall not be responsible to provide any remedy under this warranty with respect to any component that fails by reason of negligence, abnormal use, misuse or abuse, use with parts or equipment not manufactured or supplied by Stoelting, or damage in transit.

THE REMEDIES SET FORTH IN THIS WARRANTY SHALL BE THE SOLE LIABILITY STOELTING AND THE EXCLUSIVE REMEDY OF BUYER WITH RESPECT TO EQUIPMENT SUPPLIED BY STOELTING; AND IN NO EVENT SHALL STOELTING BE LIABLE FOR ANY INCIDENTAL OR CONSEQUENTIAL DAMAGES, WHETHER FOR BREACH OF WARRANTY OR OTHER CONTRACT BREACH, NEGLIGENCE OR OTHER TORT, OR ON ANY STRICT LIABILITY THEORY.